

PULSO BURSÁTIL

FACULTAD DE CIENCIAS EMPRESARIALES Y ECONÓMICAS
CARRERA DE ECONOMÍA
LABORATORIO DE MERCADO DE CAPITALES

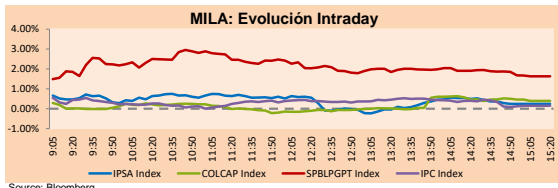


MILA

Lima, June 10, 2021

Main Indexes	Close	1 D	5 D	1 M	YTD	Cap. Burs. (US\$ bill)
▼ IPSA (Chile)	4,260.22	-0.19%	0.79%	-7.28%	1.99%	120.04
▼ IGPA (Chile)	21,439.37	-0.12%	0.60%	-7.51%	2.06%	143.28
▼ COLSC (Colombia)	975.42	-0.52%	-0.45%	-0.65%	-7.89%	4.66
▲ COLCAP (Colombia)	1,260.21	0.39%	0.98%	-3.93%	-12.36%	77.84
▲ S&P/BVL (Perú)*	19,987.17	1.63%	-6.53%	-4.63%	-4.01%	95.52
▲ S&P/BVL SEL (Perú)	528.22	2.81%	-5.98%	-4.65%	-4.21%	85.88
▲ S&P/BVL LIMA 25	25,581.00	2.07%	-5.84%	-6.07%	1.52%	94.71
▲ IPC (México)	50,886.33	0.12%	0.51%	2.04%	15.48%	315.11
▼ S&P MILA 40	496.06	-0.10%	-0.98%	-6.71%	-7.21%	6,207.34

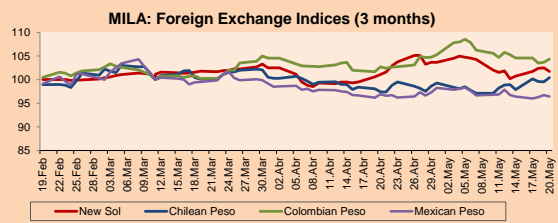
*Legend: Variation 1D: 1 day; 5D: 5 days; 1M: 1 Month; YTD: Var% 12/31/20 to date



Source: Bloomberg

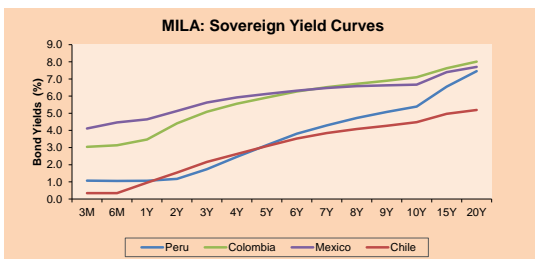
Currency	Price	1D*	5D*	30 D*	YTD*
▲ Sol (PEN)	3,894.9	1.35%	0.61%	5.06%	7.65%
▲ Chilean Peso (CLP)	720.73	0.15%	0.11%	2.54%	1.26%
▼ Colombian Peso (COP)	3,589.94	-0.05%	-1.55%	-3.21%	4.67%
▼ Mexican Peso (MXN)	19.70	-0.19%	-2.30%	-1.31%	-1.08%

*Legend: Variation 1D: 1 day; 5D: 5 days; 1M: 1 Month; YTD: Var% 12/31/20 to date



Base: 11/03/21=100
Source: Bloomberg

Fixed Income	Currency	Price	Bid Yield (%)	Ask Yield (%)	Duration
PERU 7.35 07/21/25	USD	122.861	1.63	1.51	3.58
PERU 4.125 08/25/27	USD	111.679	2.16	2.06	5.52
PERU 8.75 11/21/33	USD	156.112	3.27	3.20	8.74
PERU 6.55 03/14/37	USD	136.011	3.58	3.51	10.33
PERU 5.625 11/18/2050	USD	132.508	3.80	3.76	16.41
CHILE 2.25 10/30/22	USD	102.565	0.56	0.21	1.37
CHILE 3.125 01/21/26	USD	108.644	1.24	1.14	4.30
CHILE 3.625 10/30/42	USD	105.575	3.29	3.24	15.35
COLOM 11.85 03/09/28	USD	160.5	2.30	2.00	5.15
COLOM 10.375 01/28/33	USD	150.656	4.78	4.57	7.61
COLOM 7.375 09/18/37	USD	133.386	4.50	4.43	10.42
COLOM 6.125 01/18/41	USD	120.279	4.58	4.52	12.08
MEX 4 10/02/23	USD	120.279	4.577	4.522	12.08
MEX5.55 01/45	USD	121.509	4.13	4.10	14.08



Source: Bloomberg

Equity

Largest gains	Exchange	Currency	Price	▲%
ALICORP-C	Peru	PEN	6.50	7.44
CAP	Chile	CLP	12695.00	3.46
FERREYCORP SAA	Peru	PEN	1.59	3.25
VOLCAN CIA MIN-B	Peru	PEN	0.65	3.17
CENCOSUD SHOPPIN	Chile	CLP	1280.10	2.63

Per Turnover	Exchange	Amount (US\$)
GRUPO MEXICO-B	Mexico	40,172,435
GRUPO F BANORT-O	Mexico	32,436,134
WALMART DE MEXIC	Mexico	22,489,791
AMERICA MOVIL-L	Mexico	19,917,356
FOMENTO ECON-UBD	Mexico	15,962,922

Largest losses	Exchange	Currency	Price	▼%
SMU SA	Chile	CLP	97.01	-2.89
BANCO CRED INVER	Chile	CLP	32355	-2.63
EMPRESAS COPEC	Chile	CLP	7140	-2.49
SOUTHERN COPPER	Peru	USD	67.14	-2.41
ENTEL	Chile	CLP	3535	-1.53

Per Volume	Exchange	Volume
ITAU CORPBANCA	Chile	436,038,271
BANCO SANTANDER	Chile	142,730,962
BANCO DE CHILE	Chile	74,666,214
ENEL CHILE SA	Chile	71,412,334
ENEL AMERICAS SA	Chile	53,764,171

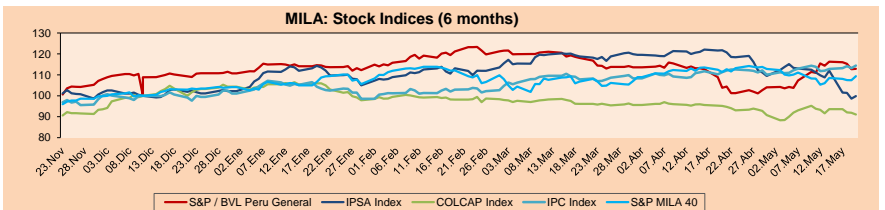
MILA

Peru: The General Index of the BVL ended today's session with a positive result of +1.63%. The index maintains an annual accumulated negative trend of -4.01% in local currency, while the adjusted return in dollars amounts to -10.83%. Then, the S&P / BVL Peru SEL varied by +2.81% while the S&P / BVL LIMA 25 by +2.07%. The PEN spot reached 5 / 3.8949. Headline: BCR maintains its benchmark interest rate

Chile: The IPSA index ended the day with a negative return of -0.19%. The sectors that benefited the least from the session were Energy (-2.49%) and Communication Services (-1.53%). The stocks with the best performance were SMU SA (-2.89%) and Banco de Crédito e Inversión (-2.63%). Headline: Once again the quarantines hit the Santiago Stock Exchange

Colombia: The COLCAP index closed today with a positive return of +0.39%. The sectors that benefited the most from the session were First Needs Products (+1.65%) and Materials (+0.88%). The stocks with the best performance were Corp Financiera Colombiana (+1.97%) and Grupo Argos (+1.76%). Headline: Latam Colombia will recover 100% of the pre-pandemic offer in July

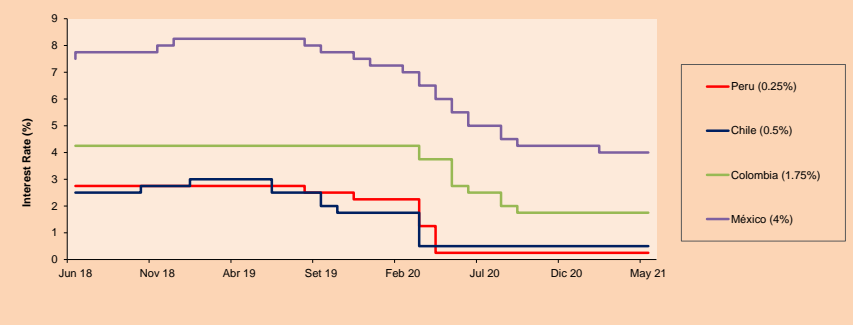
Mexico: The IPC index closed the day with a positive return of +0.12%. The sectors that benefited the most from the session were Non-Basic Consumer Products (+4.08%) and Industrial (+1.13%). The best performing stocks were Alsea SAB de CV (6.24%) and Grupo Aeroport del Pacífico (+2.15%). Headline: IMEF improves its forecast for the Mexican economy in 2021 to 5.5%



Base: 23/11/20=100
Source: Bloomberg

ETFs	Curr.	Close	1D	5D	30 D	YTD	Exchange
▲ iShares MSCI All Peru Caped Index Fund	USD	30.8	0.98%	-7.31%	-11.75%	-11.19%	NYSE Arca
▼ iShares MSCI All Chile Caped Index Fund	USD	29.27	-1.01%	0.52%	-8.87%	-3.11%	Cboe BZX
▼ Global X MSCI Colombia	USD	10.43	-1.32%	2.46%	3.04%	-8.19%	NYSE Arca
▲ iShares MSCI Mexico Capped	USD	49.39	-0.30%	2.72%	4.97%	14.89%	NYSE Arca
▲ iShares MSCI Emerging Markets	USD	55.48	0.36%	-0.02%	3.58%	7.37%	NYSE Arca
▲ Vanguard FTSE Emerging Markets	USD	54.9	0.70%	0.70%	4.85%	9.56%	NYSE Arca
▲ iShares Core MSCI Emergina Markets	USD	67.31	0.12%	-0.10%	3.57%	8.49%	NYSE Arca
▲ iShares JP Morgan Emerging Markets Bonds	USD	64.89	-0.05%	-0.12%	2.82%	6.24%	Cboe BZX
- Morgan Stanley Emerging Markets Domestic	USD	6.26	0.00%	0.16%	1.62%	-0.48%	New York

MILA: Policy Rate



Source: Bloomberg

Capital Market Laboratory Coordinator: Economist Bruno Bellido
Collaboration: María Camarena, Alonso García, Adrian Paredes and Jairo Valverde
email: pulsobursatil@ulima.edu.pe
facebook: www.facebook.com/pulsobursatil

The content of this document is just for informational purposes. The information and opinions expressed should not be considered as recommendations for future decisions. Under any circumstances, the Capital Market Laboratory of University of Lima will be responsible for the use of the statements in this document.

WORLD

Main Indices	Close	1 D*	5 D*	1 M*	YTD*	Market Cap. (US\$ Mill.)
▲ Dow Jones (USA)	34,468.24	0.06%	-0.32%	-0.80%	12.61%	10,206,931
▲ Standard & Poor's 500 (EEUU)	4,239.18	0.47%	1.10%	1.21%	12.86%	37,268,692
▲ NASDAQ Composite (USA)	14,020.33	0.78%	2.98%	4.61%	8.78%	23,218,989
▲ Stoxx EURO600 (Europe)	454.56	0.03%	0.84%	4.11%	13.92%	10,281,467
▼ DAX (Germany)	15,571.22	-0.06%	-0.39%	2.99%	13.50%	1,148,146
▲ FTSE 100 (United Kingdom)	7,988.18	0.10%	0.34%	2.02%	9.72%	1,443,080
▼ CAC 40 (France)	6,546.49	-0.28%	0.59%	4.45%	17.92%	1,778,606
▼ IBEX 35 (Spain)	9,133.80	-0.24%	-0.09%	1.63%	13.13%	502,687
▼ MSCI AC Asia Pacific Index	209.60	0.35%	-0.13%	2.47%	4.84%	27,196,397
▼ HANG SENG (Hong Kong)	28,738.88	-0.01%	-0.78%	2.59%	5.54%	4,494,187
▲ SHANGHAI SE Comp. (China)	3,610.86	0.54%	0.74%	4.91%	3.97%	7,023,839
▲ NIKKEI 225 (Japan)	28,958.56	0.34%	-0.34%	1.22%	5.52%	4,013,290
▲ S&P / ASX 200 (Australia)	7,302.50	0.44%	0.58%	2.90%	10.86%	1,799,464
▲ KOSPI (South Korea)	3,224.64	0.12%	0.51%	0.47%	12.22%	1,942,953

*Legend: Variation 1D: 1 Day; 5D: 5 Days; 1M: 1 Month; YTD: Var. % 12/31/20 to date

Equity

Germany (Stocks from DAX Index)

Largest gains	Curr.	Price	▲%	Exchange	Largest losses	Curr.	Price	▼%	Exchange
DTE GY	EUR	17.696	1.78	Xetra	BMW GY	EUR	92.85	-1.85	Xetra
SAP GY	EUR	116.04	0.85	Xetra	RWE GY	EUR	30.45	-1.39	Xetra
MRK GY	EUR	155.7	0.74	Xetra	MTX GY	EUR	207.2	-1.29	Xetra
DWNI GY	EUR	51.54	0.66	Xetra	DBK GY	EUR	11.896	-1.02	Xetra

Europe (Stocks from STOXX EUROPE 600)

Largest gains	Curr.	Price	▲%	Exchange	Largest losses	Curr.	Price	▼%	Exchange
AUTO LN	Gbp	615.6	6.54	Londres	EZJ LN	Gbp	947.2	-3.95	Londres
ARGX BB	EUR	245.4	3.81	EN Brussels	NEL NO	NOK	16.65	-3.90	Oslo
PEO PW	PLN	99.08	3.42	Warsaw	CCL LN	Gbp	1798.4	-3.59	Londres
TEF SQ	EUR	4.0985	3.31	Soc.Bol SIBE	EVD GY	EUR	58	-3.40	Xetra

Global Overview:

United States:

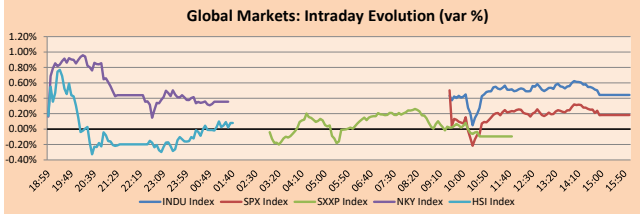
The main US indexes ended the session today with positive returns, due to the report of the US Consumer Price Index, which pushes inflation to higher levels than expected. On the other hand, the prices of used motors have skyrocketed due to the shortage of semiconductors, affecting auto stocks and parts. The S&P 500 ended higher, driven by the health sector +1.69% after the rise of Pfizer + 2.2% on its contract to sell 500 million doses of the vaccine against COVID19 for 3.5 billion dollars. On the other hand, its Finance sector fell by -1.12%, due to the easing of the US Treasury Bond. The Nasdaq ended higher, thanks to the increase in all its sectors except the industrial sector -0.50%. Among the news, a major infrastructure project of 547 billion dollars focused on transportation was approved. On the other hand, GameStop, the stock most closely associated with the "meme stock" phenomenon, fell 27.2% after the video game retailer said it could sell new stock. To sum it up, DOW JONES + 0.06%, Nasdaq + 0.78% and S&P 500 + 0.47% ended the day with gains.

Europe:

The main European indices ended the session mixed amid U.S. data showing the highest year-on-year inflation since 2008. On the other hand, investors remain expectant of the latest meeting of the European Central Bank. Which, forecasts euro zone economic growth in 2021 of 4.6%, up from the 4% projected in March. Inflation projections were also raised, with the ECB expecting price growth of 1.9% this year above its last projection of 1.2%. Thus, the STOXX 6000 closed lower dragged down by automakers -0.97% and the oil sector -0.90%. Finally, the German index ended the session with losses amid concerns about the tapering of ECB stimulus. In individual stocks Volkswagen shares fell by 0.4% after it signaled that semiconductor supply shortages will ease further in the third quarter; similarly, BMW posted losses -1.8%. Thus, FTSE 100 +0.10%, DAX -0.06%; CAC 40 -0.26%; IBEX 35 -0.24%; STOXX 600 +0.03%.

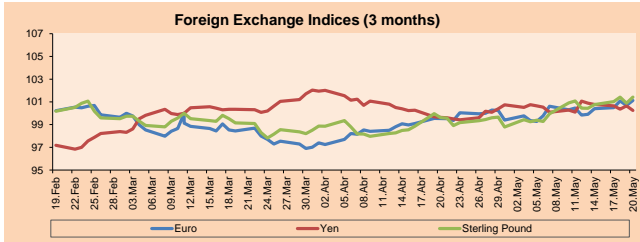
Asia:

Major Asian indexes ended the session with positive returns, after the focus on the U.S. inflation report was displaced by hopes of an early economic recovery. Chinese and Hong Kong stocks closed slightly higher following statements from the governor of China's central bank that inflation is "basically under control" and monetary policy will remain stable. In addition, top U.S. and Chinese trade officials spoke by phone, agreeing to promote healthy trade and cooperation to resolve differences, according to China's Ministry of Commerce. In Japan, the index finished higher after shipping companies raised their expectations thanks to trade reopenings. Prime Minister Yoshihide Suga proposed to finish vaccinating the entire population by October-November. In Australia, stocks posted positive results, led by technology and banking stocks. Gold stocks also posted gains, even as the price of the metal remained largely subdued. In South Korea, its indexes ended higher, thanks to strong foreign buying. Thus, NIKKEI -0.34%, HANG SENG -0.01%, CSI 300 +0.67%; SHANGHAI COMPOSITE +0.54%; KOSPI +0.26% and S&P/ASX 200 +0.44%.



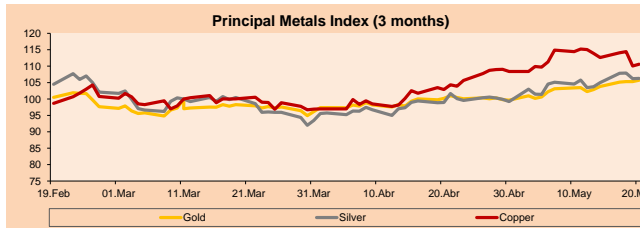
Currency	Price	1 D*	5 D*	1 M*	YTD*
▼ Euro	1.2170	-0.08%	0.35%	0.18%	-0.38%
▼ Yen	108.3300	-0.27%	-0.87%	0.65%	5.89%
▲ Sterling Pound	1.4177	0.42%	0.59%	0.25%	3.71%
▲ Yuan	6.3332	0.09%	-0.17%	-0.56%	-2.05%
▲ Hong Kong Dollar	7.7603	0.01%	0.03%	-0.11%	0.09%
▼ Brazilian Real	5.0563	-0.12%	-0.40%	-3.15%	-2.74%
▼ Argentine Peso	95.1045	0.05%	0.30%	1.22%	13.02%

*Legend: Variation 1D: 1 Day; 5D: 5 Days; 1M: 1 Month; YTD: Var. % 12/31/20 to date

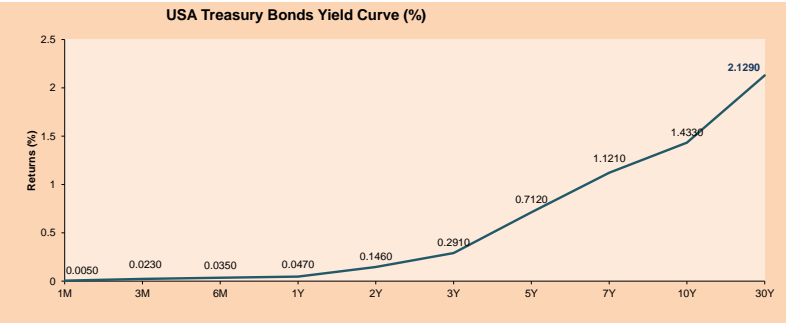


Commodities	Close	1 D*	5 D*	1 M*	YTD*
▲ Oro (US\$ Oz. T) (LME)	1,898.51	0.53%	1.48%	3.32%	0.01%
▲ Plata (US\$ Oz. T) (LME)	27.99	0.78%	2.04%	1.32%	6.01%
▼ Cobre (US\$ TM) (LME)	9,863.00	-0.90%	0.95%	-5.60%	27.28%
▲ Zinc (US\$ TM) (LME)	2,972.85	-0.78%	0.32%	-0.86%	8.92%
▲ Petróleo WTI (US\$ Barril) (NYM)	70.29	0.47%	2.15%	7.64%	44.87%
▼ Estiño (US\$ TM) (LME)	32,420.00	-0.43%	1.96%	-3.73%	57.80%
▼ Plomo (US\$ TM) (LME)	2,165.50	-1.03%	-1.08%	-1.62%	9.80%
▲ Azúcar #11 (US\$ Libra) (NYB-ICE)	17.73	-0.11%	1.43%	-1.99%	26.29%
▲ Cacao (US\$ TM) (NYB-ICE)	2,433.00	1.71%	-0.90%	-2.80%	-2.91%
▲ Café Arábica (US\$ TM) (NYB-ICE)	160.80	0.94%	0.72%	5.79%	20.63%

*Leyenda: Variación 1D: 1 Día; 5D: 5 Días; 1M: 1 Mes; YTD: Var. % 31/12/20 a la fecha



ETFs	Curr.	Close	1D	5D	30 D	YTD	Exchange
SPDR S&P 500 ETF TRUST	USD	423.61	0.46%	1.16%	2.27%	13.30%	NYSE Arca
ISHARES MSCI EMERGING MARKET	USD	55.48	0.36%	-0.02%	3.58%	7.37%	NYSE Arca
ISHARES IBOXX HIGH YLD CORP	USD	87.59	0.18%	0.59%	0.63%	0.33%	NYSE Arca
FINANCIAL SELECT SECTOR SPDR	USD	37.32	-1.17%	-2.74%	0.65%	26.59%	NYSE Arca
VANECK GOLD MINERS	USD	38.96	2.50%	2.04%	3.48%	8.13%	NYSE Arca
ISHARES RUSSELL 2000 ETF	USD	229.28	-0.89%	1.28%	4.71%	16.94%	NYSE Arca
SPDR GOLD SHARES	USD	177.74	0.43%	1.41%	3.25%	-0.35%	NYSE Arca
ISHARES 20+ YEAR TREASURY BO	USD	142.54	0.60%	3.28%	4.01%	-9.63%	NASDAQ GM
INVESCO QQQ TRUST SERIES 1	USD	340.35	1.04%	3.14%	4.62%	8.48%	NASDAQ GM
ISHARES NASDAQ BIOTECHNOLOGY	USD	163.20	1.68%	8.17%	10.39%	7.73%	NASDAQ GM
ENERGY SELECT SECTOR SPDR	USD	55.57	-0.13%	0.34%	6.31%	46.62%	NYSE Arca
PROSHARES ULTRA VIX ST FUTUR	USD	31.51	-8.85%	-14.47%	-34.08%	-70.41%	Close BZX
UNITED STATES OIL FUND LP	USD	47.83	0.53%	1.83%	6.60%	44.95%	NYSE Arca
ISHARES MSCI BRAZIL ETF	USD	40.89	-1.21%	0.12%	6.73%	10.30%	NYSE Arca
SPDR S&P OIL & GAS EXP & PR	USD	96.71	-1.07%	0.27%	14.40%	65.32%	NYSE Arca
UTILITIES SELECT SECTOR SPDR	USD	65.96	0.66%	0.72%	0.11%	5.20%	NYSE Arca
ISHARES US REAL ESTATE ETF	USD	104.97	0.25%	2.12%	7.65%	22.56%	NYSE Arca
SPDR S&P BIOTECH ETF	USD	136.09	1.02%	7.36%	8.78%	-3.33%	NYSE Arca
ISHARES IBOXX INVESTMENT GRA	USD	133.56	0.45%	1.83%	2.30%	-0.33%	NYSE Arca
ISHARES JP MORGAN USD EMERGI	USD	112.77	0.15%	1.33%	1.51%	-2.71%	NASDAQ GM
REAL ESTATE SELECT SECT SPDR	USD	45.73	1.02%	2.72%	8.73%	25.08%	NYSE Arca
ISHARES CHINA LARGE-CAP ETF	USD	46.18	0.22%	-0.30%	3.24%	-0.54%	NYSE Arca
CONSUMER STAPLES SPDR	USD	70.90	0.62%	-0.52%	0.48%	5.11%	NYSE Arca
VANECK JR GOLD MINERS	USD	54.32	3.11%	3.17%	5.35%	0.15%	NYSE Arca
SPDR BARRIC HIGH YIELD BND	USD	108.44	0.16%	0.61%	0.65%	0.46%	NYSE Arca
VANGUARD REAL ESTATE ETF	USD	105.50	0.72%	2.94%	8.57%	24.22%	NYSE Arca
GRAYSCALE BITCOIN TRUST BTC	USD	30.40	1.00%	-5.74%	-32.26%	-5.00%	OTC US



Source: Bloomberg

Capital Market Laboratory Coordinator: Economist Bruno Bellido
Collaboration: Maria Camarena, Alonso García, Adrian Paredes and Jairo Valverde
email: pulsobursatil@ulima.edu.pe
facebook: www.facebook.com/pulsobursatil

LIMA

Stocks

Ticker	Currency	Price	1D*	5D*	30D*	YTD*	Frequency	Volume (US\$)	Beta	Dividend Yield (%)	Price Earning	Market Cap. (M US\$)	Economic Sector*	Index Weight
▼ ALICORC1 PE**	S/.	6.50	-0.52%	-0.45%	-0.65%	-7.89%	100.00%	562,850	0.99	3.85	12.26	1,423.41	Industrial	3.53%
▼ ATACOCB1 PE**	S/.	0.10	0.00%	-7.96%	-20.00%	-24.64%	70.00%	30,033	1.20	0.00	-	25.23	Mining	1.02%
▼ BACKUSH1 PE**	S/.	18.00	-5.26%	0.00%	-11.55%	-10.67%	100.00%	41,748	0.72	7.15	8.69	7,379.66	Industrial	0.82%
▼ BAP PE**	US\$	125.44	-0.29%	-11.66%	-8.03%	-21.89%	100.00%	1,015,934	1.16	0.00	-	11,839.32	Diverse	5.82%
▲ BVN PE**	US\$	10.80	1.69%	-7.77%	-1.01%	-10.00%	100.00%	829,060	1.09	0.00	-	2,971.75	Mining	5.88%
▲ CASAGRC1 PE**	S/.	4.00	5.82%	-14.89%	-34.43%	-15.79%	90.00%	83,156	1.23	18.70	2.95	86.51	Agricultural	1.31%
▲ BBVAC1 PE**	S/.	2.00	5.82%	0.50%	-4.76%	-7.83%	85.00%	202,316	1.08	2.26	28.56	3,352.68	Finance	2.85%
▲ CORAREH1 PE**	S/.	0.98	3.16%	-6.67%	-17.65%	10.11%	100.00%	63,889	1.33	20.76	3.14	377.19	Industrial	1.72%
▲ CPACASC1 PE**	S/.	6.05	0.83%	1.51%	11.01%	14.15%	100.00%	287,122	0.73	3.80	43.21	710.94	Industrial	2.38%
▼ CVERDEC1 PE**	US\$	16.70	-4.30%	-16.71%	-30.39%	-20.17%	100.00%	950,741	1.49	3.42	9.56	5,845.94	Mining	5.25%
- ENGEPEC1 PE**	S/.	1.99	0.00%	-3.86%	-10.76%	-0.50%	95.00%	1,874	0.70	0.00	12.16	1,450.39	Public Services	1.44%
- ENDISPC1**	S/.	4.15	0.00%	-9.78%	-17.82%	-23.15%	75.00%	5,977	0.75	0.00	9.34	680.39	Public Services	0.98%
▲ FERREYC1 PE**	S/.	1.59	3.25%	-5.92%	-16.75%	-8.62%	100.00%	390,559	1.09	11.45	7.02	398.30	Diverse	4.90%
▲ AENZAC1 PE**	S/.	1.10	-8.33%	-18.52%	-13.39%	-36.78%	100.00%	274,791	0.86	0.00	-	246.25	Diverse	4.05%
▲ IFS PE**	US\$	26.29	3.02%	-8.01%	-3.52%	-15.03%	95.00%	26,068	1.22	2.93	15.43	3,035.12	Diverse	7.22%
▲ INRETC1 PE**	US\$	35.50	0.57%	-5.33%	-1.39%	-9.44%	100.00%	1,573,749	0.83	1.92	75.72	3,649.66	Diverse	5.28%
▲ LUSURC1 PE**	S/.	11.90	0.17%	6.25%	-8.46%	-53.33%	70.00%	24,992	0.74	7.23	12.89	1,487.77	Public Services	1.81%
▲ MINSUR1 PE**	S/.	2.68	2.68%	-2.90%	-13.55%	44.86%	100.00%	10,285	0.95	12.47	5.24	1,983.73	Mining	3.09%
- PML PE**	US\$	0.10	0.00%	-16.67%	-25.93%	-5.66%	75.00%	13,000	1.39	0.00	-	26.44	Mining	2.12%
▲ RELAPAC1 PE**	S/.	0.12	6.09%	1.67%	6.09%	76.81%	95.00%	40,948	1.15	0.00	3.19	260.58	Industrial	2.12%
▼ SCCO PE**	US\$	67.14	-2.41%	-3.27%	-17.64%	1.88%	100.00%	104,338	0.94	3.28	23.33	51,904.14	Mining	2.14%
▲ SIDERC1 PE**	S/.	0.97	2.11%	0.00%	-9.35%	14.12%	100.00%	5,691	0.98	23.14	4.85	221.13	Industrial	1.43%
- TV PE**	US\$	0.19	0.00%	-5.42%	-6.34%	30.61%	100.00%	16,081	1.27	0.00	-	189.91	Mining	2.93%
▼ UNACEMC1 PE**	S/.	1.33	-0.75%	-8.28%	-12.50%	-14.19%	95.00%	692,366	1.17	1.95	10.50	620.84	Industrial	3.00%
▲ VOLCABC1 PE**	S/.	0.65	3.17%	-4.41%	-10.96%	25.00%	100.00%	393,862	1.54	0.00	-	680.32	Mining	5.90%
▲ NEXAPEC1 PE**	S/.	3.30	1.23%	0.00%	-1.49%	16.61%	65.00%	60,714	1.15	0.00	25.33	1,119.65	Mining	1.56%

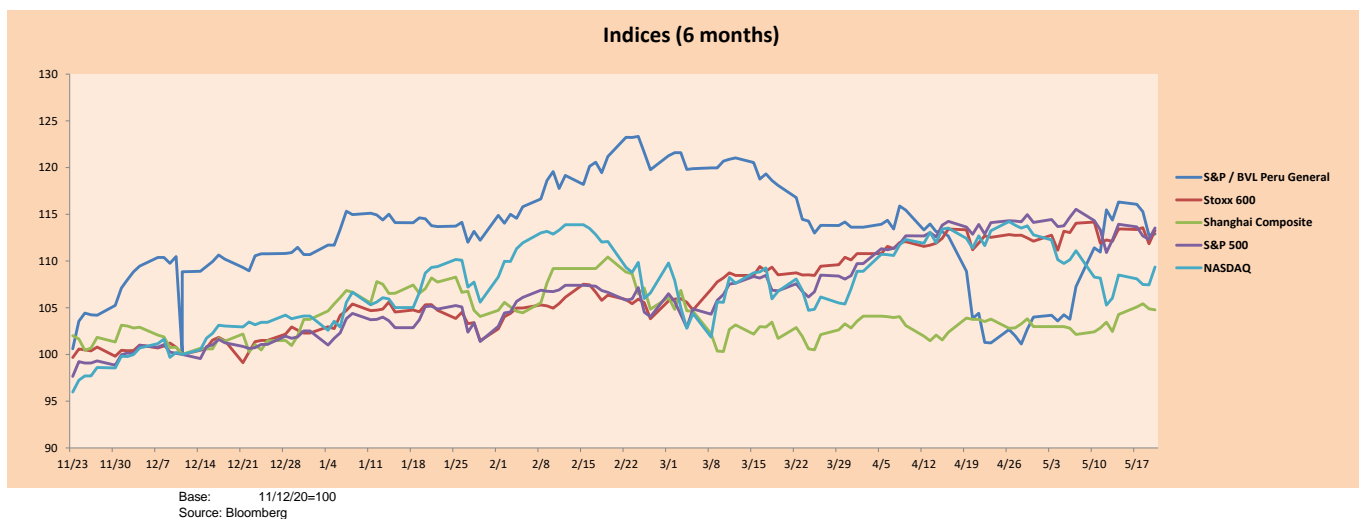
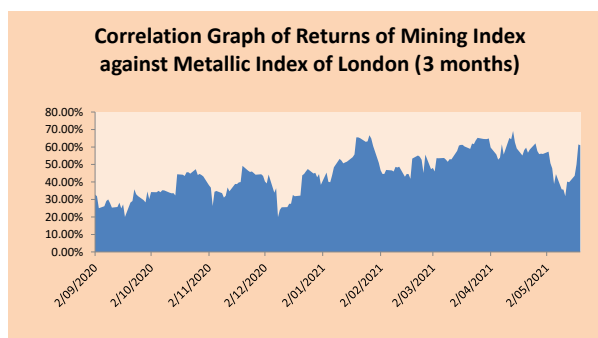
Quantity of shares: 26
Source: Bloomberg, Economática
* Bloomberg Industry Classification System
** PER is used in the stock market and original currency of the instrument
*Legend: Variation 1D: 1 Day; 5D: 5 Days, 1M: 1 Month; YTD: Var.% 12/31/20 to date

Sectorial Indices

	Close	1D*	5D*	30D*	YTD*	Beta
▲ S&P/BVLMining	424.38	0.27%	-4.52%	-9.37%	8.83%	1.12
▲ S&P/BVLConsumer	1,052.22	3.61%	-1.85%	-2.77%	-3.34%	0.60
▼ S&P/BVLIndustrials	180.08	-0.04%	-6.01%	-7.28%	-5.50%	0.62
▲ S&P/BVLFinancials	883.15	1.50%	-10.32%	-1.18%	-14.58%	1.22
▼ S&P/BVLConstruction	194.34	-1.39%	-6.19%	-3.22%	-7.07%	0.63
- S&P/BVLPublicSvcs	526.89	0.00%	-4.00%	-8.06%	-14.20%	0.44
- S&P/BVLElectricUtil	514.38	0.00%	-4.00%	-8.05%	-14.20%	0.44

S&P/BVLConstructionTRPEN

*Legend: Variation 1D: 1 Day; 5D: 5 Days, 1M: 1 Month; YTD: Var.% 12/31/20 to date



Base: 11/12/20=100
Source: Bloomberg

Capital Market Laboratory Coordinator: Economist Bruno Bellido
Collaboration: María Camarena, Alonso García, Adrian Paredes and Jairo Valverde
email: pulsobursatil@ulima.edu.pe
facebook: www.facebook.com/pulsobursatil

The content of this document is just for informational purposes. The information and opinions expressed should not be considered as recommendations for future decisions. Under any circumstances, the Capital Market Laboratory of University of Lima will be responsible for the use of the statements in this document.

SOVEREIGN RATING

RISK RATINGS

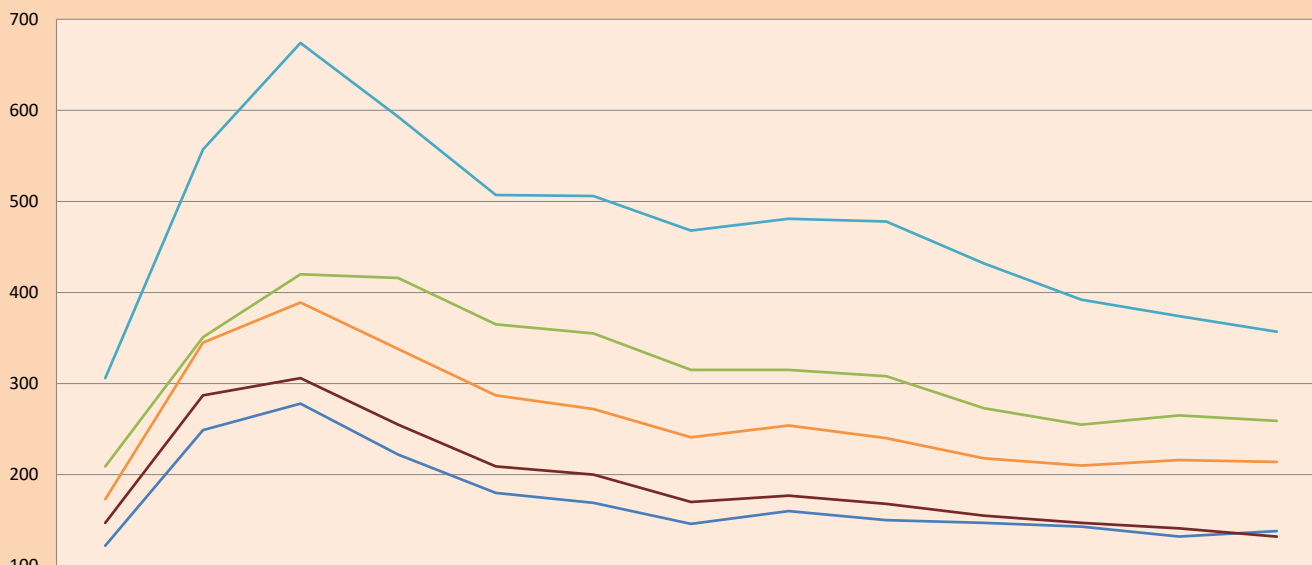
Moody's	S&P	Fitch	
Aaa	AAA	AAA	Prime
Aa1	AA+	AA+	High credit quality
Aa2	AA	AA	
Aa3	AA-	AA-	
A1	A+	A+	Medium-high grade, with low credit risk
A2	A	A	
A3	A-	A-	
Baa1	BBB+	BBB+	Moderate Credit Risk
Baa2	BBB	BBB	
Baa3	BBB-	BBB-	
Ba1	BB+	BB+	It has speculative elements and it is subject to substantial credit risk
Ba2	BB	BB	
Ba3	BB-	BB-	
B1	B+	B+	It is considered speculative and it has high credit risk
B2	B	B	
B3	B-	B-	
Caa1	CCC+	CCC	Bad credit conditions and it is subject to high credit risk
Caa2	CCC		
Caa3	CCC-		
Ca	C	DDD	Very close to default or in default
C	D		

Source: Bloomberg

Latin America Credit Rating			
Clasificadora de riesgo			
Country	Moody's	Fitch	S&P
Peru	A3	BBB+	BBB+
México	Ba2	BB-	BB-
Venezuela	C	WD	SD
Brazil	Ba2	BB-	BB-
Colombia	Baa2	BBB-	BB+
Chile	A1	A-	A
Argentine	Ca	WD	CCC+
Panama	Baa2	BBB-	BBB

Source: Bloomberg

LATAM Country Risk (bps)



	Feb-20	Mar-20	Abr-20	May-20	Jun-20	Jul-20	Ago-20	Set-20	Oct-20	Nov-20	Dic-20	Ene-21	Feb-21
Perú	122	249	278	222	180	169	146	160	150	147	143	132	138
Brasil	209	351	420	416	365	355	315	315	308	273	255	265	259
México	306	557	674	593	507	506	468	481	478	432	392	374	357
Colombia	173	345	389	338	287	272	241	254	240	218	210	216	214
Chile	147	287	306	255	209	200	170	177	168	155	147	141	132

Source: BCRP

Capital Market Laboratory Coordinator: Economist Bruno Bellido
Collaboration: María Camarena, Alonso García, Nicolás Muñoz, Adrián Paredes y Jairo Valverde
email: pulsobursatil@ulima.edu.pe
facebook: www.facebook.com/pulsobursatil.ul