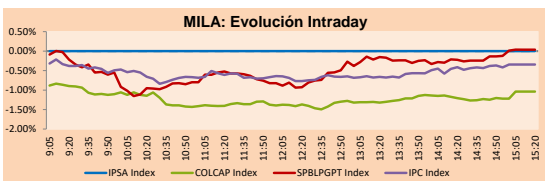


MILA

Lima, June 28, 2021

Main Indexes	Close	1 D	5 D	1 M	YTD	Cap. Burs. (US\$ bill)
▼ IPSA (Chile)	4,349.51	-1.62%	0.44%	2.13%	4.12%	120.82
▼ IGPA (Chile)	21,845.32	-1.51%	0.48%	1.92%	3.99%	144.14
▼ COLSC (Colombia)	981.55	-0.38%	1.53%	0.92%	-7.31%	4.73
▼ COLCAP (Colombia)	1,270.88	-1.04%	1.96%	5.32%	-11.61%	78.55
▲ S&P/BVL (Perú)*	18,976.97	0.04%	1.87%	-9.70%	-8.86%	92.29
▲ S&P/BVL SEL (Perú)	499.42	-0.31%	0.84%	-9.54%	-9.43%	82.88
▲ S&P/BVL LIMA 25	24,611.47	2.05%	2.72%	-9.00%	-2.33%	91.51
▼ IPC (México)	50,351.21	-0.39%	0.07%	0.62%	14.26%	310.35
▲ S&P MILA 40	488.76	0.19%	3.82%	-0.66%	-8.58%	6,147.98

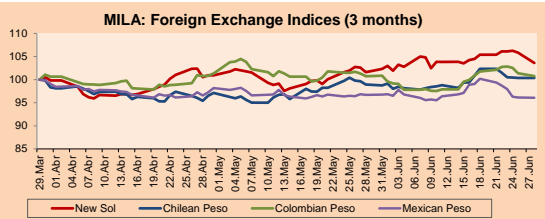
*Legend: Variation 1D: 1 day; 5D: 5 days; 1M: 1 Month; YTD: Var% 12/31/20 to date



Source: Bloomberg

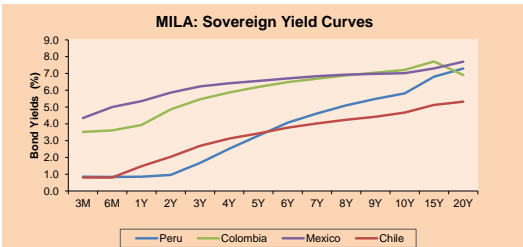
Currency	Price	1D*	5D*	30 D*	YTD*
▼ Sol (PEN)	3,8854	-2.12%	-1.71%	1.94%	7.39%
- Chilean Peso (CLP)	733.90	0.00%	-1.94%	1.42%	3.11%
▼ Colombian Peso (COP)	3,708.75	-0.62%	-1.34%	0.04%	8.14%
▼ Mexican Peso (MXN)	19.81	-0.07%	-3.33%	-0.64%	-0.53%

*Legend: Variation 1D: 1 day; 5D: 5 days; 1M: 1 Month; YTD: Var% 12/31/20 to date



Base: 29/03/21=100
Source: Bloomberg

Fixed Income	Currency	Price	Bid Yield (%)	Ask Yield (%)	Duration
PERU 7.35 07/21/25	USD	122.793	1.60	1.47	3.53
PERU 4.125 08/25/27	USD	111.855	2.11	2.02	5.47
PERU 8.75 11/21/33	USD	156.617	3.23	3.14	8.70
PERU 6.55 03/14/37	USD	137.205	3.49	3.43	10.31
PERU 5.625 11/18/2050	USD	136.547	3.62	3.58	16.62
CHILE 2.25 10/30/22	USD	102.469	0.56	0.22	1.31
CHILE 3.125 01/21/26	USD	108.493	1.26	1.15	4.25
CHILE 3.625 10/30/42	USD	106.255	3.24	3.20	15.32
COLOM 11.85 03/09/28	USD	157.855	2.59	2.27	5.08
COLOM 10.375 01/28/33	USD	150.044	4.82	4.61	7.55
COLOM 7.375 09/18/37	USD	131.818	4.61	4.54	10.35
COLOM 6.125 01/18/41	USD	118.75	4.67	4.63	12.00
MEX 4 10/02/23	USD	118.75	4.674	4.634	12
MEX5.55 01/45	USD	121.034	4.17	4.12	14.03



Source: Bloomberg

Equity	Exchange	Currency	Price	▲ %
Largest gains				
FERREYCORP SAA	Peru	PEN	1.54	9.22
VOLCAN CIA MIN-B	Peru	PEN	0.49	4.04
CREDICORP LTD	Peru	USD	123.75	3.89
ALICORP-C	Peru	PEN	6.30	3.28
BECLE SAB DE CV	Mexico	MXN	52.26	2.33
Per Turnover	Exchange	Amount (US\$)		
AERO DEL PACIF-B	Mexico	48,585,264		
WALMART DE MEXIC	Mexico	44,673,741		
GRUPO F BANORT-O	Mexico	27,790,446		
AMERICA MOVIL-L	Mexico	16,880,644		
GRUPO MEXICO-B	Mexico	14,731,117		

Largest losses	Exchange	Currency	Price	▼ %
BUENAVENTURA-ADI	Peru	USD	9.03	-3.01
BANCOLOMBIA-PREF	Colombia	COP	27,030.00	-2.21
GRUMA SAB-B	Mexico	MXN	223.30	-2.06
AERO DEL PACIF-B	Mexico	MXN	213.68	-2.01
ECOPETROL	Colombia	COP	2,718.00	-1.88
Per Volume	Exchange	Volume		
ITAU CORPBANCA	Chile	1,100,349,532		
BANCO SANTANDER	Chile	408,331,919		
BANCO DE CHILE	Chile	239,838,412		
ENEL CHILE SA	Chile	145,973,668		
ENEL AMERICAS SA	Chile	125,699,986		

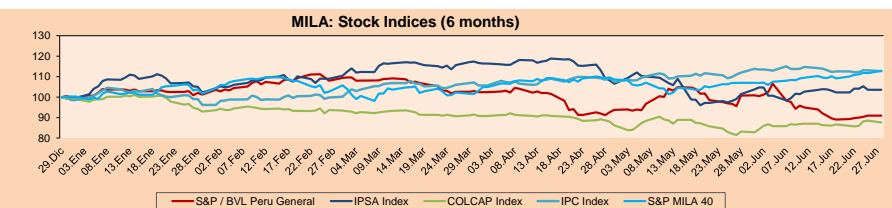
MILA

Peru: The BVL General Index ended today's session with a positive result of +0.04%. The index maintains a negative annual cumulative trend of -8.86% in local currency, while the dollar-adjusted performance amounted to -15.13%. Then, the S&P / BVL Peru SEL varied by -0.31% while the S&P / BVL LIMA 25 by +2.05%. The spot PEN reached S / 3.8855. Headline: Julio Velarde evaluates continuity at the head of Peru's central bank, according to Castillo's advisor.

Chile: The Chilean stock exchange remained closed due to national holiday.

Colombia: The COLCAP index closed today with a negative return of -1.04%. The sectors that lost the most during the day were Communication Services (-0.53%) and Consumer Staples (-0.22%). The most performing stocks were Grupo Aval (-1.70%) and Bando Davivienda (-1.26%). Headline Colombia's Central Bank will leave its rate stable in June, but the upward cycle is approaching.

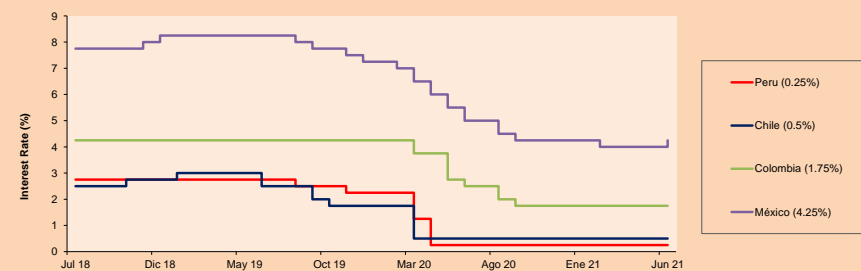
Mexico: The IPC index closed the day with a negative return of -1.04%. The least benefited sectors of the day were Real Estate (-1.96%) and Health Care (-1.60%). The worst performing stocks were El Puerto Liverpool (-2.13%) and Gruma SAB de CV (-2.06%). Headline: S&P global upgrades Mexico's growth prospects.



Base: 30/12/20=100
Source: Bloomberg

ETFs	Curr.	Close	1D	5D	30 D	YTD	Exchange
▲ iShares MSCI All Peru Caped Index Fund	USD	29.29	2.23%	4.68%	-11.00%	-15.54%	NYSE Arca
▲ iShares MSCI All Chile Caped Index Fund	USD	28.54	-2.29%	1.10%	-2.96%	-5.53%	Cboe BZX
▼ Global X MSCI Colombia	USD	10.125	-0.93%	2.17%	2.80%	-10.87%	NYSE Arca
▲ iShares MSCI Mexico Capped	USD	48.27	-0.60%	2.35%	0.33%	12.28%	NYSE Arca
▲ iShares MSCI Emerging Markets	USD	55.55	0.09%	2.00%	1.24%	7.51%	NYSE Arca
▲ Vanguard FTSE Emerging Markets	USD	54.69	0.24%	1.96%	1.50%	9.14%	NYSE Arca
▲ iShares Core MSCI Emerging Markets	USD	67.48	0.18%	1.88%	1.25%	8.77%	NYSE Arca
▲ iShares JP Moran Emerging Markets Bonds	USD	64.39	0.05%	0.78%	-0.63%	5.42%	Cboe BZX
▲ Morgan Stanley Emerging Markets Domestic	USD	6.24	1.30%	1.63%	-0.79%	-0.79%	New York

MILA: Policy Rate



Source: Bloomberg

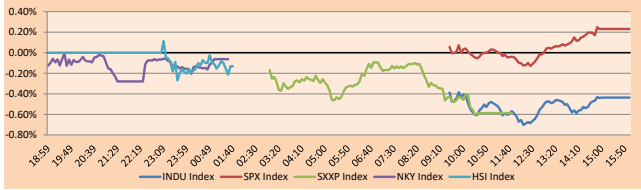
Capital Market Laboratory Coordinator: Economist Bruno Bellido
Collaboration: María Camarena, Alonso García, Adrian Paredes y Jairo Valverde
email: pulsobursatil@ulima.edu.pe
facebook: www.facebook.com/pulsobursatil.ul

WORLD

Main Indices	Close	1 D*	5 D*	1 M*	YTD*	Market Cap. (US\$ Mill.)
▼ Dow Jones (USA)	34,283.27	-0.44%	1.20%	-0.71%	12.01%	10,410,732
▲ Standard & Poor's 500 (EUEU)	4,290.61	0.23%	1.56%	2.06%	14.23%	37,905,328
▲ NASDAQ Composite (USA)	14,500.51	0.98%	2.54%	5.47%	12.51%	24,273,568
▼ Stoxx EUROPE 600 (Europe)	454.94	-0.59%	-0.06%	1.75%	14.49%	10,614,084
▼ DAX (Germany)	15,554.18	-0.34%	-0.31%	0.85%	14.09%	1,170,458
▼ FTSE 100 (United Kingdom)	7,072.97	-0.88%	0.15%	1.17%	9.97%	1,473,803
▼ CAC 40 (France)	6,556.02	-0.98%	-0.67%	1.58%	18.64%	1,820,486
▼ IBEX 35 (Spain)	8,913.70	-1.99%	-1.52%	-3.05%	10.77%	502,099
▲ MSCI AC Asia Pacific Index	209.52	0.12%	2.53%	0.63%	4.80%	27,166,106
▼ HANG SENG (Hong Kong)	29,268.30	-0.07%	2.74%	-0.45%	6.47%	4,532,099
▼ SHANGHAI SE Comp. (China)	3,608.37	-0.03%	2.19%	-0.77%	2.88%	6,986,462
▼ NIKKEI 225 (Japan)	29,048.02	-0.08%	3.70%	-1.16%	4.99%	3,967,811
▼ S&P / ASX 200 (Australia)	7,307.29	-0.01%	1.00%	1.70%	10.84%	1,760,335
▼ KOSPI (South Korea)	3,301.89	-0.39%	0.07%	3.07%	14.38%	1,968,324

*Legend: Variation 1D: 1 Day; 5D: 5 Days; 1M: 1 Month; YTD: Var. % 12/31/20 to date

Global Markets: Intraday Evolution (var %)

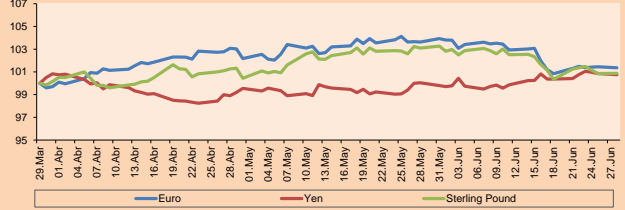


Source: Bloomberg

Currency	Price	1 D*	5 D*	1 M*	YTD*
▼ Euro	1.1925	-0.08%	0.05%	-2.19%	-2.38%
▼ Yen	110.6300	-0.11%	0.33%	0.71%	7.15%
▲ Sterling Pound	1.3883	0.03%	-0.37%	-2.15%	1.56%
▲ Yuan	6.4566	0.01%	-0.16%	1.38%	-1.08%
▲ Hong Kong Dollar	7.7624	0.01%	-0.03%	0.01%	0.12%
▼ Brazilian Real	4.9266	-0.16%	-1.77%	-5.72%	-5.23%
▼ Argentine Peso	95.6848	0.08%	0.32%	1.19%	13.71%

*Legend: Variation 1D: 1 Day; 5D: 5 Days; 1M: 1 Month; YTD: Var. % 12/31/20 to date

Foreign Exchange Indices (3 months)

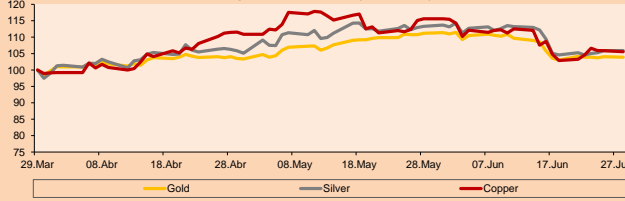


Base: 29/03/21=100
Source: Bloomberg

Commodities	Close	1 D*	5 D*	1 M*	YTD*
▼ Oro (US\$ Oz. T) (LME)	1,778.48	-0.17%	-0.27%	-6.58%	-6.31%
▲ Plata (US\$ Oz. T) (LME)	26.11	0.04%	0.62%	-6.53%	-1.10%
▼ Cobre (US\$ TM) (LME)	9,361.25	-0.29%	2.26%	-8.66%	20.81%
▼ Zinc (US\$ TM) (LME)	2,890.25	-0.07%	2.37%	-5.04%	5.90%
▼ Petróleo WTI (US\$ Barril) (NYM)	72.91	-1.54%	-0.29%	10.30%	50.73%
▲ Estiáno (US\$ TM) (LME)	33,027.00	1.88%	4.11%	0.08%	60.76%
▲ Plomo (US\$ TM) (LME)	2,250.00	1.64%	4.73%	2.45%	13.98%
▲ Azúcar #11 (US\$ Libra) (NYB-ICE)	17.61	1.73%	3.16%	1.27%	25.43%
▲ Café (US\$ TM) (NYB-ICE)	2,360.00	0.00%	0.08%	-3.09%	-5.03%
▲ Café Arábica (US\$ TM) (NYB-ICE)	162.70	3.11%	5.62%	-0.97%	22.06%

*Legend: Variación 1D: 1 Día; 5D: 5 Días; 1M: 1 Mes; YTD: Var. % 31/12/20 a la fecha

Principal Metals Index (3 months)



Base: 29/03/21=100
Source: Bloomberg

Equity

Germany (Stocks from DAX Index)

Largest gains	Curr.	Price	▲%	Exchange	Largest losses	Curr.	Price	▼%	Exchange
ENR GY	EUR	25.35	-0.08	Xetra	DHER GY	EUR	110.4	1.80	Xetra
IFX GY	EUR	33.345	0.82	Xetra	BAYN GY	EUR	51.51	-0.54	Xetra
SIE GY	EUR	134.2	-1.99	Xetra	EOAN GY	EUR	9.935	0.98	Xetra
VOW3 GY	EUR	213.4	-1.18	Xetra	BAS GY	EUR	65.3	-1.14	Xetra

Europe (Stocks from STOXX EUROPE 600)

Largest gains	Curr.	Price	▲%	Exchange	Largest losses	Curr.	Price	▼%	Exchange
ROCKB DC	DKK	3002	-1.28	Copenhagen	NG/ LN	GBP	925.5	0.25	Londres
ELUXB SS	SEK	233.4	-1.06	Stockholm	EOAN GY	EUR	9.935	0.98	Xetra
AMP IM	EUR	41.37	0.24	Borsa Italiana	INPST NA	EUR	16.196	3.44	EN Amsterdam
TRN IM	EUR	6.336	0.63	Borsa Italiana	SAF FP	EUR	118.94	-4.45	EN Paris

Global Overview:

United States:

The main indices of the United States closed the day with mixed returns, due to a rise in the prices of the shares linked to Chips, although the gains were severely hit before expectations of the meeting of the oil countries for this week. The DOW JONES -0.44% closed lower dragged by the Energy sector -3.08% and Industrial -1.02% and ended the day with only 10 of its 30 values on the rise. Meanwhile, the S&P 500 + 0.23% closed higher, driven by the Information Technology sector, although its gains also diminished due to the drop in the Energy sector -3.33%. In turn, the NASDAQ index + 0.98% due to its composition of a majority of technology stocks. In the field of individual stocks, Facebook achieved a market capitalization of one trillion dollars today, which was reflected in a 4.18% rise in its stock within the NASDAQ. The companies Enphase Energy + 7.38%, Etsy Inc. + 7.36% and NRG Energy + 6.11% also stood out. Thus, DOW JONES -0.44%; S&P 500 + 0.23%; NASDAQ + 0.98% closed with mixed returns.

Europe:

The indices on the European continent ended the day with negative results as fears related to the resurgence of COVID-19 cases remain after the appearance of the new Delta variant. Thus, the STOXX 600 closed with losses dragged down by travel and leisure stocks due to new bans on British tourists following the appearance of the new Delta variant. Similarly, the increase in COVID-19 cases in Asia affected crude oil prices, dragging down the energy sector by more than 2%. On the other hand, in London, the stock market closed lower after the increase of more than 22,800 infections in less than 24 hours in the country. In corporate data, Burberry Group shares fell by 5.1% after its CEO Marco Gobetti announced his resignation at the end of 2021. Finally, the German index ended the day with negative returns dragged down by the Industrials -1.34% and Consumer -1.18% sectors. Thus, STOXX 600 -0.59%; FTSE 100 -0.88%; CAC 40 -0.98%; DAX -0.34%; IBEX 35 -1.99% closed the day with losses.

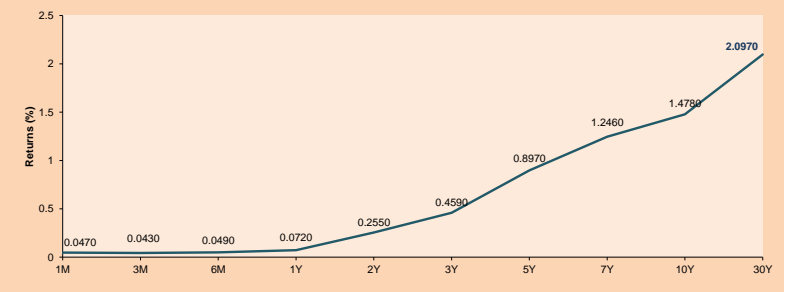
Asia:

Asian stock markets ended with mixed results, as they are awaiting US economic data. The Chinese CSI 300 index ended higher, thanks to technological gains which were driven by continued political support for the sector. On the other hand, Hong Kong shares ended slightly lower since the losses in the Energy -0.8% and Finance -1.12% sectors had a strong impact on the gains in Health + 1.83% and Non-Basic Consumption + 1.31%. Similarly, Japan's Nikkei closed slightly lower, weighed down by chip-related stocks, however the market was cautious as it awaits US employment data. Likewise, South Korea's shares ended almost unchanged, due to an increase in COVID19 cases in the region. Finally, Australian stocks ended lower, as the travel blockade due to the increase in coronavirus cases impacted the tourism sector weighing the gains in e-commerce companies. Thus, NIKKEI -0.06%; HANG UP SENG -0.07%; CSI 300 + 0.22%; S & P / ASX 200 -0.01%; KOSPI -0.03% closed the week slightly lower.

ETFs

ETFs	Curr.	Close	1D	5D	30 D	YTD	Exchange
SPDR S&P 500 ETF TRUST	USD	427.47	0.20%	1.57%	1.77%	14.33%	NYSE Arca
ISHARES MSCI EMERGING MARKET	USD	55.55	0.09%	2.00%	1.24%	7.51%	NYSE Arca
ISHARES IBOXX HIGH YLD CORP	USD	87.92	-0.01%	0.37%	0.85%	0.71%	NYSE Arca
FINANCIAL SELECT SECTOR SPDR	USD	36.66	-0.73%	2.09%	-3.50%	24.36%	NYSE Arca
VANECK GOLD MINERS	USD	33.98	-1.11%	-2.27%	-13.80%	-5.66%	NYSE Arca
ISHARES RUSSELL 2000 ETF	USD	230.44	-0.73%	1.57%	2.19%	17.54%	NYSE Arca
SPDR GOLD SHARES	USD	166.58	-0.01%	-0.22%	-6.62%	-6.60%	NYSE Arca
ISHARES 20+ YEAR TREASURY BO	USD	143.47	1.03%	0.13%	3.63%	-9.04%	NASDAQ GM
INVESCO QQQ TRUST SERIES 1	USD	353.71	1.22%	2.72%	5.92%	12.74%	NASDAQ GM
ISHARES BIOTECHNOLOGY ETF	USD	163.37	0.15%	1.98%	7.52%	7.84%	NASDAQ GM
ENERGY SELECT SECTOR SPDR	USD	53.47	-3.38%	-1.11%	2.41%	41.08%	NYSE Arca
PROSHARES ULTRA VIX ST FUTUR	USD	27.51	-0.11%	-15.25%	-23.92%	-74.17%	Close BZX
UNITED STATES OIL FUND LP	USD	49.54	-1.41%	0.36%	4.07%	50.08%	NYSE Arca
ISHARES MSCI BRAZIL ETF	USD	41.17	0.32%	0.83%	5.81%	11.06%	NYSE Arca
SPDR S&P OIL & GAS EXP & PR	USD	95.40	-4.36%	0.03%	7.11%	63.08%	NYSE Arca
UTILITIES SELECT SECTOR SPDR	USD	64.39	0.64%	-0.06%	-1.18%	2.70%	NYSE Arca
ISHARES US REAL ESTATE ETF	USD	102.82	-0.40%	-0.63%	2.63%	20.05%	NYSE Arca
SPDR S&P BIOTECH ETF	USD	137.85	-0.60%	2.27%	7.61%	-2.08%	NYSE Arca
ISHARES IBOXX INVESTMENT GRA	USD	134.05	0.43%	0.37%	1.78%	-2.95%	NYSE Arca
ISHARES JP MORGAN US EMERGI	USD	112.34	0.19%	0.12%	0.43%	-3.08%	NASDAQ GM
REAL ESTATE SELECT SECT SPDR	USD	44.71	0.04%	-0.47%	3.35%	22.29%	NYSE Arca
ISHARES CHINA LARGE-CAP ETF	USD	47.22	0.23%	3.67%	2.12%	1.70%	NYSE Arca
CONSUMER STAPLES SPDR	USD	69.74	0.09%	0.87%	-1.51%	3.40%	NYSE Arca
VANECK JR GOLD MINERS	USD	46.41	-2.15%	-3.95%	-15.17%	-14.44%	NYSE Arca
SPDR RIBG BARO HIGH YIELD BND	USD	109.85	0.00%	0.35%	0.86%	0.84%	NYSE Arca
VANGUARD REAL ESTATE ETF	USD	102.61	-0.23%	0.04%	2.73%	20.82%	NYSE Arca
GRAYSCALE BITCOIN TRUST BTC	USD	29.25	5.67%	5.60%	-3.21%	-8.59%	OTC US

USA Treasury Bonds Yield Curve (%)



Source: Bloomberg

Capital Market Laboratory Coordinator: Economist Bruno Bellido
Collaboration: María Camarena, Alonso García, Adrian Paredes y Jairo Valverde
email: pulsobursatil@ulima.edu.pe
facebook: www.facebook.com/pulsobursatil.ul

LIMA

Stocks

Ticker	Currency	Price	1D*	5D*	30D*	YTD*	Frequency	Volume (US\$)	Beta	Dividend Yield (%)	Price Earning	Market Cap. (M US\$)	Economic Sector*	Index Weight
▼ ALICORC1 PE**	S/.	6.30	-0.38%	1.53%	0.92%	-7.31%	100.00%	1,769,049	1.02	3.97	11.89	1,383.29	Industrial	3.53%
▼ ATACOCB1 PE**	S/.	0.10	-3.06%	-5.00%	-9.52%	-31.16%	65.00%	2,832	1.17	0.00	-	23.10	Mining	1.02%
▲ BACKUS1 PE**	S/.	17.51	3.61%	0.06%	-5.86%	-13.10%	90.00%	444,245	0.75	7.35	8.45	6,457.47	Industrial	0.82%
▲ BAP PE**	US\$	123.75	3.89%	6.43%	-10.00%	-22.95%	100.00%	1,720,825	1.15	0.00	-	11,679.81	Diverse	5.82%
▼ BVN PE**	US\$	9.03	-3.01%	-1.10%	-22.02%	-24.75%	95.00%	563,202	1.10	0.00	-	2,484.71	Mining	5.88%
▲ CASAGRC1 PE**	S/.	3.90	8.33%	-1.27%	-26.28%	-17.89%	90.00%	1,276	1.25	19.18	2.88	84.55	Agricultural	1.31%
▲ BVVAC1 PE**	S/.	1.91	3.24%	2.96%	-6.74%	-8.87%	95.00%	184,992	1.10	2.28	28.23	3,322.35	Finance	2.85%
▲ CORARE1 PE**	S/.	1.09	10.10%	15.96%	-7.63%	22.47%	100.00%	34,821	1.35	18.66	3.49	359.04	Industrial	1.72%
▲ CPACASC1 PE**	S/.	5.10	1.19%	-1.92%	-11.30%	-3.77%	100.00%	313,142	0.71	15.49	36.43	611.32	Industrial	2.38%
▲ CVERDEC1 PE**	US\$	16.50	3.13%	5.10%	-15.60%	-21.13%	100.00%	670,988	1.45	3.46	9.45	5,775.92	Mining	5.25%
- ENGEPEC1 PE**	S/.	1.99	0.00%	0.00%	-6.13%	-0.50%	70.00%	134,129	0.68	0.00	12.16	1,453.93	Public Services	1.44%
- ENDISPC1**	S/.	3.85	0.00%	-1.28%	-19.29%	-28.70%	60.00%	4,899	0.77	0.00	8.66	632.75	Public Services	0.98%
▲ FERREYC1 PE**	S/.	1.54	9.22%	6.21%	-12.99%	-11.49%	100.00%	172,721	1.11	11.83	6.80	386.72	Diverse	4.90%
- AENZAC1 PE**	S/.	1.30	0.00%	6.56%	13.04%	-25.29%	100.00%	54,833	0.73	0.00	-	291.73	Diverse	4.05%
▲ IFS PE**	US\$	25.68	1.70%	2.31%	-7.63%	-17.00%	100.00%	30,795	1.18	3.00	15.03	2,964.70	Diverse	7.22%
▼ INRETC1 PE**	US\$	35.00	-1.55%	-0.06%	-6.67%	-10.71%	100.00%	1,269,309	0.83	1.95	74.47	3,598.26	Diverse	5.28%
- LUSURC1 PE**	S/.	10.95	0.00%	-1.08%	-4.78%	-57.06%	80.00%	703	0.73	0.00	11.86	1,372.35	Public Services	1.81%
▲ MINSUR1 PE**	S/.	2.58	5.31%	2.79%	-15.69%	39.46%	100.00%	31,697	0.96	12.95	5.05	1,914.38	Mining	3.09%
- PML PE**	US\$	0.10	0.00%	3.19%	-23.62%	-8.49%	80.00%	2,040	1.42	0.00	-	25.64	Mining	2.12%
▲ RELAPAC1 PE**	S/.	0.15	5.59%	15.27%	25.83%	118.84%	100.00%	20,872	1.15	0.00	3.95	323.31	Industrial	2.12%
▼ SCCO PE**	US\$	64.54	-0.88%	6.15%	-7.67%	-2.06%	95.00%	30,610	0.97	3.41	22.42	49,894.15	Mining	2.14%
▲ SIDERC1 PE**	S/.	0.98	5.38%	6.52%	-4.85%	15.29%	95.00%	26,934	0.94	22.91	4.90	223.96	Industrial	1.43%
▲ TV PE**	US\$	0.18	4.00%	4.00%	-11.22%	23.81%	95.00%	6,417	1.24	0.00	-	180.01	Mining	2.93%
▲ UNACEMC1 PE**	S/.	1.37	15.13%	13.22%	-11.04%	-11.61%	100.00%	77,151	1.16	1.90	10.82	641.08	Industrial	3.00%
▲ VOLCABC1 PE**	S/.	0.49	4.04%	-0.20%	-32.08%	-5.96%	100.00%	413,346	1.59	0.00	-	513.06	Mining	5.90%
- NEXAPEC1 PE**	S/.	2.90	0.00%	-5.23%	-12.12%	2.47%	65.00%	40,327	1.11	0.00	22.32	987.55	Mining	1.56%

Quantity of shares: 26
Source: Bloomberg, Económática
* Bloomberg Industry Classification System
** PER is used in the stock market and original currency of the instrument
*Legend: Variation 1D: 1 Day; 5D: 5 Days; 1M: 1 Month; YTD: Var.% 12/31/20 to date

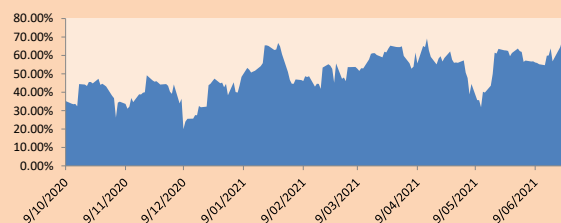
Sectorial Indices

	Close	1D*	5D*	30D*	YTD*	Beta
▼ S&P/BVLMining	389.67	-2.91%	2.12%	-11.37%	-0.07%	0.97
▼ S&P/BVLConsumer	1,027.55	-0.18%	-0.05%	-4.42%	-5.61%	0.80
▲ S&P/BVLIndustrials	184.22	6.41%	5.85%	-3.80%	-3.33%	0.88
▲ S&P/BVLFinancials	868.58	1.18%	4.08%	-7.91%	-15.99%	1.10
▲ S&P/BVLConstruction	201.98	5.39%	5.49%	-0.58%	-3.41%	0.79
- S&P/BVLPublicSvcs	518.06	0.00%	-0.95%	-7.08%	-15.64%	0.43
- S&P/BVLElectricUtil	505.75	0.00%	-0.95%	-7.09%	-15.64%	0.43

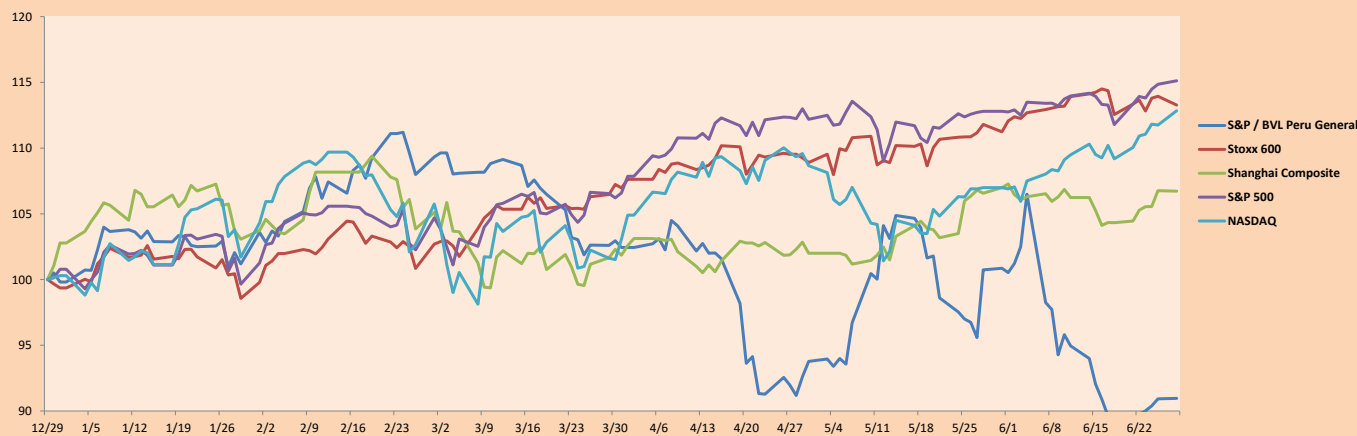
S&P/BVLConstructionTRPEN

*Legend: Variation 1D: 1 Day; 5D: 5 Days; 1M: 1 Month; YTD: Var.% 12/31/20 to date

Correlation Graph of Returns of Mining Index against Metallic Index of London (3 months)



Indices (6 months)



Base: 29/12/20=100
Source: Bloomberg

Capital Market Laboratory Coordinator: Economist Bruno Bellido
Collaboration: María Camarena, Alonso García, Adrian Paredes y Jairo Valverde
email: pulsobursatil@ulima.edu.pe
facebook: www.facebook.com/pulsobursatil.ul

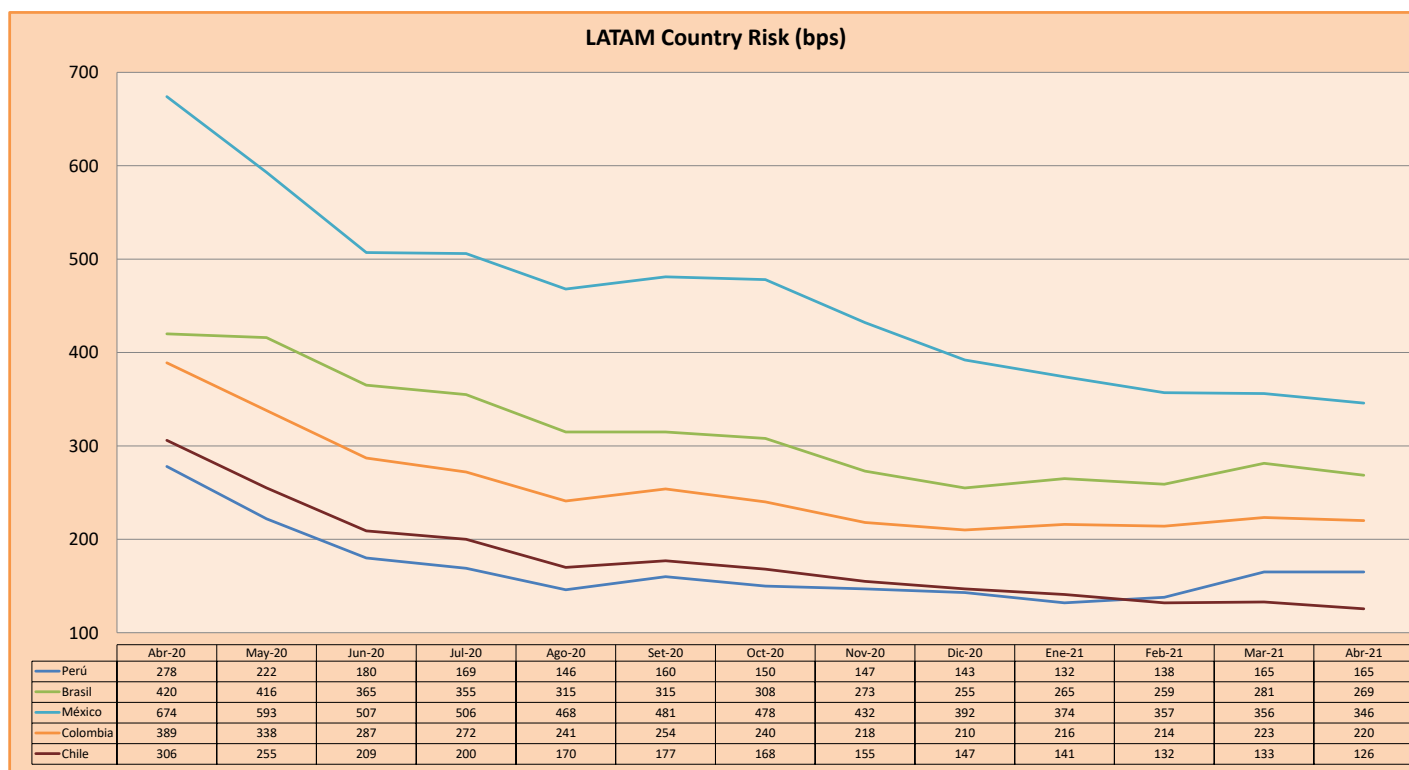
SOVEREIGN RATING

RISK RATINGS			
Moody's	S&P	Fitch	
Aaa	AAA	AAA	Prime
Aa1	AA+	AA+	High credit quality
Aa2	AA	AA	
Aa3	AA-	AA-	
A1	A+	A+	Medium-high grade, with low credit risk
A2	A	A	
A3	A-	A-	
Baa1	BBB+	BBB+	Moderate Credit Risk
Baa2	BBB	BBB	
Baa3	BBB-	BBB-	
Ba1	BB+	BB+	It has speculative elements and it is subject to substantial credit risk
Ba2	BB	BB	
Ba3	BB-	BB-	
B1	B+	B+	It is considered speculative and it has high credit risk
B2	B	B	
B3	B-	B-	
Caa1	CCC+		Bad credit conditions and it is subject to high credit risk
Caa2	CCC		
Caa3	CCC-	CCC	
Ca	C		Very close to default or in default
		DDD	
C	D	DD D	

Source: Bloomberg

Latin America Credit Rating			
Clasificadora de riesgo			
Country	Moody's	Fitch	S&P
Peru	A3	BBB+	BBB+
México	Ba2	BB-	BB-
Venezuela	C	WD	SD
Brazil	Ba2	BB-	BB-
Colombia	Baa2	BBB-	BB+
Chile	A1	A-	A
Argentine	Ca	WD	CCC+
Panama	Baa2	BBB-	BBB

Source: Bloomberg



Source: BCRP

Capital Market Laboratory Coordinator: Economist Bruno Bellido
Collaboration: Maria Camarena, Alonso García, Adrian Paredes y Jairo Valverde
email: pulsobursatil@ulima.edu.pe
facebook: www.facebook.com/pulsobursatil.ul