

# PULSO BURSÁTIL

FACULTAD DE CIENCIAS EMPRESARIALES Y ECONÓMICAS  
CARRERA DE ECONOMÍA  
LABORATORIO DE MERCADO DE CAPITALES

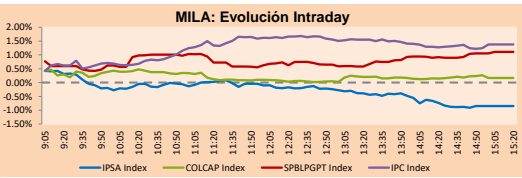


## MILA

Lima, July 26, 2021

| Main Indexes         | Close     | 1 D    | 5 D    | 1 M    | YTD     | Cap. Burs. (US\$ bill) |
|----------------------|-----------|--------|--------|--------|---------|------------------------|
| ▼ IPSA (Chile)       | 4,146.71  | -0.97% | -2.02% | -4.64% | -0.71%  | 109.66                 |
| ▼ IGPA (Chile)       | 20,775.75 | -0.95% | -2.00% | -4.93% | -1.14%  | 130.64                 |
| ▲ COLSIC (Colombia)  | 939.53    | 0.68%  | -0.46% | -4.67% | -11.30% | 4.27                   |
| ▲ COLCAP (Colombia)  | 1,256.31  | 0.17%  | -1.27% | -2.69% | -13.09% | 72.80                  |
| ▲ S&P/BVL (Perú)*    | 18,749.48 | 1.11%  | 3.18%  | -1.03% | -9.83%  | 91.74                  |
| ▲ S&P/BVL SEL (Perú) | 495.79    | 0.68%  | 2.51%  | -0.51% | -9.61%  | 81.99                  |
| ▲ S&P/BVL LIMA 25    | 24,440.75 | 0.55%  | 2.81%  | 1.34%  | -3.01%  | 90.98                  |
| ▲ IPC (México)       | 50,897.79 | 1.25%  | 3.67%  | 0.71%  | 15.53%  | 311.39                 |
| ▲ S&P MILA 40        | 458.39    | 0.01%  | -0.11% | -6.79% | -14.95% | 6,239.21               |

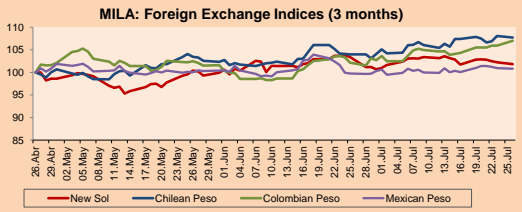
\*Legend: Variation 1D: 1 day; 5D: 5 days; 1M: 1 Month; YTD: Var% 12/31/20 to date



Source: Bloomberg

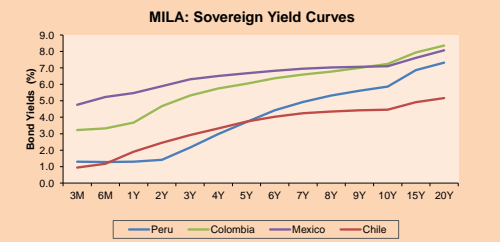
| Currency               | Price    | 1D*    | 5D*    | 30 D*  | YTD*   |
|------------------------|----------|--------|--------|--------|--------|
| ▼ Sol (PEN)            | 3,909.3  | -0.40% | -0.99% | -1.52% | 8.05%  |
| ▼ Chilean Peso (CLP)   | 760.21   | -0.30% | -0.10% | 3.58%  | 6.80%  |
| ▲ Colombian Peso (COP) | 3,908.43 | 1.00%  | 1.39%  | 4.73%  | 13.96% |
| ▼ Mexican Peso (MXN)   | 20.04    | -0.15% | -0.20% | 1.07%  | 0.61%  |

\*Legend: Variation 1D: 1 day; 5D: 5 days; 1M: 1 Month; YTD: Var% 12/31/20 to date



Base: 26/04/21=100  
Source: Bloomberg

| Fixed Income          | Currency | Price   | Bid Yield (%) | Ask Yield (%) | Duration |
|-----------------------|----------|---------|---------------|---------------|----------|
| PERU 7.35 07/21/25    | USD      | 122.583 | 1.55          | 1.43          | 3.56     |
| PERU 4.125 08/25/27   | USD      | 112.081 | 2.05          | 1.95          | 5.39     |
| PERU 8.75 11/21/33    | USD      | 157.847 | 3.10          | 3.04          | 8.64     |
| PERU 6.55 03/14/37    | USD      | 138.756 | 3.38          | 3.31          | 10.26    |
| PERU 5.625 11/19/2050 | USD      | 139.831 | 3.49          | 3.43          | 16.72    |
| CHILE 2.25 10/30/22   | USD      | 102.212 | 0.66          | 0.30          | 1.22     |
| CHILE 3.125 01/21/26  | USD      | 107.707 | 1.40          | 1.29          | 4.24     |
| CHILE 3.625 10/30/42  | USD      | 106.094 | 3.25          | 3.20          | 15.25    |
| COLOM 11.85 03/09/28  | USD      | 157.404 | 2.53          | 2.29          | 5.00     |
| COLOM 10.375 01/28/33 | USD      | 148.935 | 4.87          | 4.71          | 7.71     |
| COLOM 7.375 09/18/37  | USD      | 129.514 | 4.77          | 4.71          | 10.21    |
| COLOM 6.125 01/18/41  | USD      | 116.908 | 4.81          | 4.75          | 12.16    |
| MEX 4 10/02/23        | USD      | 116.908 | 4.81          | 4.75          | 12.16    |
| MEX 5.55 01/45        | USD      | 122.14  | 4.10          | 4.06          | 14.34    |



Source: Bloomberg

## Equity

| Largest gains    | Exchange | Currency | Price | ▲%   |
|------------------|----------|----------|-------|------|
| SOUTHERN COPPER  | Peru     | USD      | 65.22 | 4.25 |
| BUENAVENTURA-ADF | Peru     | USD      | 8.80  | 3.17 |
| MEGACABLE-CPO    | Mexico   | MXN      | 72.40 | 3.15 |
| KIMBERLY-CLA M-A | Mexico   | MXN      | 33.62 | 2.44 |
| GRUPO MEXICO-B   | Mexico   | MXN      | 96.84 | 2.08 |

| Largest losses   | Exchange | Currency | Price     | ▼%    |
|------------------|----------|----------|-----------|-------|
| BANCO CRED INVER | Chile    | CLP      | 29,100.00 | -3.16 |
| ENEL CHILE SA    | Chile    | CLP      | 40.00     | -3.03 |
| EMPRESAS COPEC   | Chile    | CLP      | 6,150.00  | -2.83 |
| PARQUE ARAUCO    | Chile    | CLP      | 954.50    | -2.60 |
| AGUAS ANDINAS-A  | Chile    | CLP      | 140.23    | -2.29 |

| Per Turnover     | Exchange | Amount (US\$) |
|------------------|----------|---------------|
| WALMART DE MEXIC | Mexico   | 34,576,715    |
| AMERICA MOVIL-L  | Mexico   | 28,782,019    |
| GRUPO F BANORT-O | Mexico   | 27,664,768    |
| GRUPO MEXICO-B   | Mexico   | 27,603,186    |
| FIBRA UNO        | Mexico   | 24,511,808    |

| Per Volume       | Exchange | Volume        |
|------------------|----------|---------------|
| ITAU CORPBANCA   | Chile    | 1,100,349,532 |
| BANCO SANTANDER  | Chile    | 408,331,919   |
| BANCO DE CHILE   | Chile    | 239,838,412   |
| ENEL CHILE SA    | Chile    | 145,973,668   |
| ENEL AMERICAS SA | Chile    | 125,699,986   |

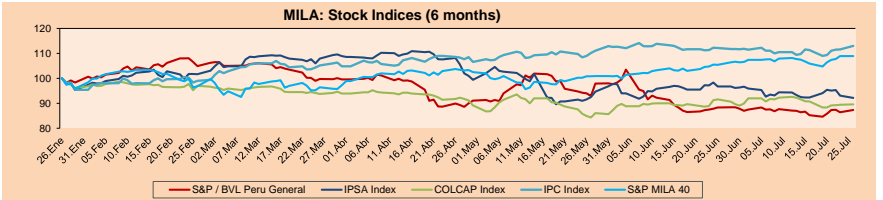
## MILA

Peru: The BVL General Index ended today's session with a positive result of +1.11%. The index maintains a negative annual cumulative trend of -9.75% in local currency, while the dollar-adjusted performance stands at -16.66%. Next, the S&P / BVL Peru SEL varied by +1.55% while the S&P / BVL LIMA 25 by +0.55%. The spot PEN reached 3 / 3.9092. Headline: ONP: More than 700 thousand affiliates with less than 20 years of contributions will have access to proportional pension.

Chile: The IPSA index closed today with a negative return of -0.97%. The most damaged sectors of the day were Materials (-3.77%) and Real Estate (-3.25%). The worst performers were Empresas CMPC SA (-1.12%). Headline: Sinovac evaluates installing a laboratory in Chile that would produce 50 million vaccines per year.

Colombia: The COLCAP index closed today with a positive return of +0.17%. The day's top gainers were energy (+1.73%) and consumer staples (+1.44%), (+1.44%). The best performing stocks were Ecopetrol SA (+1.80%) and Grupo Aval Acciones y Valores (+1.36%). Headline: U.S. highlights Colombia as a destination for foreign investment investment destination.

Mexico: The IPC index closed the day with a positive return of +1.25%. The sectors that benefited the most during the day were Communication Services (+1.68%) and Materials (+1.44%). The best performing stocks were Megacable Holdings (+3.15%) and Kimberly-Clark de México (+2.44%). Headline: Outsourcing firm: IMS extends deadline for compliance until further notice.compliance.Translated with www.DeepL.com/Translator (free version)

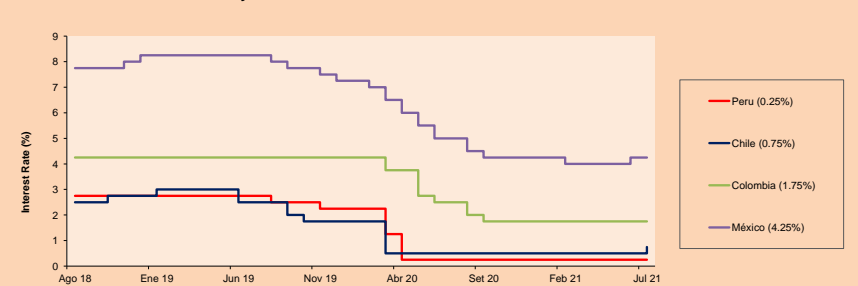


Base: 27/01/21=100  
Source: Bloomberg

## ETFs

| ETFs                                       | Curr. | Close  | 1D     | 5D     | 30 D   | YTD     | Exchange  |
|--|-------|--------|--------|--------|--------|---------|-----------|
| ▲ iShares MSCI All Peru Caped Index Fund   | USD   | 28.3   | 0.82%  | 1.65%  | -1.22% | -18.40% | NYSE Arca |
| ▲ iShares MSCI All Chile Caped Index Fund  | USD   | 26.68  | -1.11% | -2.45% | -8.66% | -11.68% | Cboe BZX  |
| ▲ Global X MSCI Colombia                   | USD   | 9.5301 | 0.21%  | 0.05%  | -6.75% | -16.11% | NYSE Arca |
| ▲ iShares MSCI Mexico Capped               | USD   | 48.74  | 1.56%  | 3.86%  | 0.37%  | 13.38%  | NYSE Arca |
| ▼ iShares MSCI Emerging Markets            | USD   | 51.51  | -1.90% | -2.24% | -7.19% | -0.31%  | NYSE Arca |
| ▼ Vanguard FTSE Emerging Markets           | USD   | 50.97  | -1.91% | -2.38% | -6.58% | 1.72%   | NYSE Arca |
| ▼ iShares Core MSCI Emerging Markets       | USD   | 63.16  | -1.67% | -1.85% | -6.25% | 1.81%   | NYSE Arca |
| ▲ iShares JP Morgan Emerging Markets Bonds | USD   | 61.81  | -0.99% | -1.07% | -3.96% | 1.20%   | Cboe BZX  |
| ▲ Morgan Stanley Emerging Markets Domestic | USD   | 6.1    | 0.16%  | 1.33%  | -0.97% | -3.02%  | New York  |

## MILA: Policy Rate



Source: Bloomberg

Capital Market Laboratory Coordinator: Economist Bruno Bellido  
Collaboration: Maria Camarena, Alonso Garcia, Adrian Paredes y Jairo Valverde  
email: pulsobursatil@ulima.edu.pe  
facebook: www.facebook.com/pulsobursatil.ul

The content of this document is just for informational purposes. The information and opinions expressed should not be considered as recommendations for future decisions. Under any circumstances, the Capital Market Laboratory of University of Lima will be responsible for the use of the statements in this document.

# PULSO BURSÁTIL

FACULTAD DE CIENCIAS EMPRESARIALES Y ECONÓMICAS  
CARRERA DE ECONOMÍA  
LABORATORIO DE MERCADO DE CAPITALES



## WORLD

| Main Indices                   | Close     | 1 D*   | 5 D*   | 1 M*    | YTD*   | Market Cap. (US\$ Mill.) |
|--------------------------------|-----------|--------|--------|---------|--------|--------------------------|
| ▲ Dow Jones (USA)              | 35,144.31 | 0.24%  | 3.48%  | 1.81%   | 14.55% | 10,933,014               |
| ▲ Standard & Poor's 500 (EEUU) | 4,422.30  | 0.24%  | 3.85%  | 2.82%   | 17.18% | 39,148,414               |
| ▲ NASDAQ Composite (USA)       | 14,840.71 | 0.03%  | 3.96%  | 2.09%   | 13.75% | 24,809,503               |
| ▼ Stoxx EUROPE 600 (Europe)    | 461.14    | -0.08% | 3.79%  | 0.22%   | 14.94% | 10,864,865               |
| ▼ DAX (Germany)                | 15,618.88 | -0.32% | 3.21%  | -0.57%  | 13.12% | 1,184,419                |
| ▼ FTSE 100 (United Kingdom)    | 7,025.43  | -0.03% | 2.65%  | -1.96%  | 8.23%  | 1,482,086                |
| ▲ CAC 40 (France)              | 6,578.60  | 0.15%  | 4.49%  | -1.37%  | 17.66% | 1,852,652                |
| ▲ IBEX 35 (Spain)              | 8,775.20  | 0.67%  | 5.70%  | -4.35%  | 7.75%  | 498,864                  |
| ▼ MSCI AC Asia Pacific Index   | 198.36    | -1.27% | -1.90% | -5.21%  | -0.78% | 25,597,387               |
| ▼ HANG SENG (Hong Kong)        | 26,192.32 | -4.13% | -4.72% | -14.29% | -7.85% | 3,784,760                |
| ▼ SHANGHAI SE Comp. (China)    | 3,467.44  | -2.34% | -2.09% | -6.24%  | -2.65% | 6,605,129                |
| ▼ NIKKEI 225 (Japan)           | 27,833.29 | 1.04%  | -1.58% | -3.71%  | 1.92%  | 3,878,940                |
| ▼ S&P / ASX 200 (Australia)    | 7,394.27  | 0.00%  | 1.49%  | 1.70%   | 12.82% | 1,749,760                |
| ▲ KOSPI (South Korea)          | 3,224.95  | 1.25%  | 3.67%  | -2.10%  | 12.50% | 1,901,751                |

\*Legend: Variation 1D: 1 Day; 5D: 5 Days; 1M: 1 Month; YTD: Var.% 12/31/20 to date

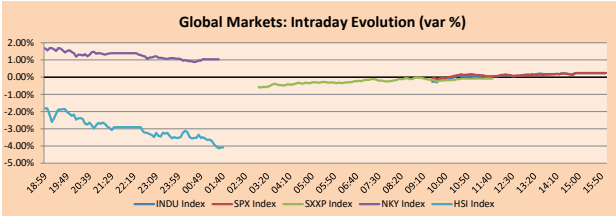
## Equity

Germany (Stocks from DAX Index)

| Largest gains | Curr. | Price  | ▲%   | Exchange | Largest losses | Curr. | Price  | ▼%    | Exchange |
|---------------|-------|--------|------|----------|----------------|-------|--------|-------|----------|
| MTX GY        | EUR   | 209.4  | 0.92 | Xetra    | DB1 GY         | EUR   | 144.95 | -1.90 | Xetra    |
| DBK GY        | EUR   | 10.658 | 0.89 | Xetra    | ADS GY         | EUR   | 312    | -1.83 | Xetra    |
| HEI GY        | EUR   | 74.86  | 0.70 | Xetra    | CON GY         | EUR   | 116.38 | -1.37 | Xetra    |
| BAS GY        | EUR   | 67.46  | 0.66 | Xetra    | DHER GY        | EUR   | 127.75 | -1.28 | Xetra    |

Europe (Stocks from STOXX EUROPE 600)

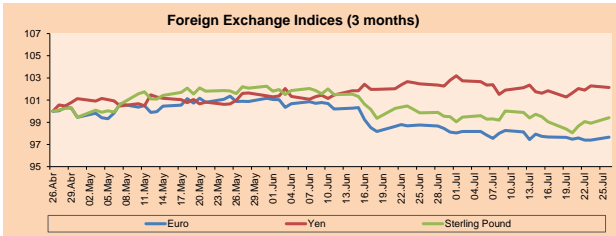
| Largest gains | Curr. | Price | ▲%   | Exchange  | Largest losses | Curr. | Price | ▼%    | Exchange     |
|---------------|-------|-------|------|-----------|----------------|-------|-------|-------|--------------|
| BOL SS        | SEK   | 338   | 5.30 | Stockholm | MOR GY         | EUR   | 49.94 | -8.67 | Xetra        |
| EVO SS        | SEK   | 1580  | 5.07 | Stockholm | EO FF          | EUR   | 37.31 | -5.71 | EN Paris     |
| BG AV         | EUR   | 48.28 | 4.96 | Vienna    | SCATC NO       | NOK   | 189   | -4.67 | Oslo         |
| IAG LN        | GBP   | 176.2 | 4.59 | Londres   | PHIA NA        | EUR   | 39.04 | -4.23 | EN Amsterdam |



Source: Bloomberg

| Currency           | Price    | 1 D*   | 5 D*   | 1 M*   | YTD*   |
|--------------------|----------|--------|--------|--------|--------|
| ▲ Euro             | 1.1803   | 0.27%  | 0.03%  | -1.11% | -3.38% |
| ▼ Yen              | 110.3900 | -0.14% | 0.85%  | -0.33% | 6.92%  |
| ▲ Sterling Pound   | 1.3818   | 0.51%  | 1.05%  | -0.44% | 1.08%  |
| ▲ Yuan             | 6.4829   | 0.02%  | -0.12% | 0.41%  | -0.68% |
| ▲ Hong Kong Dollar | 7.7787   | 0.11%  | 0.10%  | 0.22%  | 0.33%  |
| ▼ Brazilian Real   | 5.1765   | -0.45% | -1.43% | 4.91%  | -0.42% |
| ▲ Argentine Peso   | 96.5388  | 0.11%  | 0.24%  | 0.98%  | 14.73% |

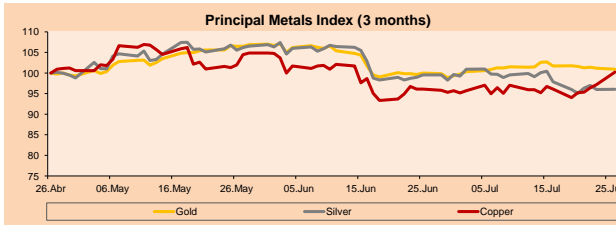
\*Legend: Variation 1D: 1 Day; 5D: 5 Days; 1M: 1 Month; YTD: Var.% 12/31/20 to date



Base: 26/04/21=100  
Source: Bloomberg

| Commodities                         | Close     | 1 D*   | 5 D*   | 1 M*   | YTD*   |
|-------------------------------------|-----------|--------|--------|--------|--------|
| ▼ Oro (US\$ Oz. T) (LME)            | 1,797.63  | -0.25% | -0.83% | 0.91%  | -5.31% |
| ▲ Plata (US\$ Oz. T) (LME)          | 25.19     | 0.06%  | 0.07%  | -3.48% | -4.58% |
| ▲ Cobre (US\$ TM) (LME)             | 9,783.25  | 3.14%  | 6.58%  | 4.31%  | 26.38% |
| ▲ Zinc (US\$ TM) (LME)              | 2,997.50  | 1.70%  | 1.21%  | 3.64%  | 9.83%  |
| ▼ Petróleo WTI (US\$ Barril) (NYM)  | 71.91     | -0.22% | 8.38%  | -1.94% | 49.22% |
| ▲ Estarío (US\$ TM) (LME)           | 35,746.00 | 0.81%  | 4.58%  | 10.28% | 73.99% |
| ▼ Plomo (US\$ TM) (LME)             | 2,411.25  | -0.09% | 5.69%  | 8.92%  | 22.04% |
| ▲ Azúcar #11 (US\$ Libra) (NYB-ICE) | 18.42     | 1.38%  | 7.91%  | 6.41%  | 31.20% |
| ▲ Cacao (US\$ TM) (NYB-ICE)         | 2,392.00  | 3.06%  | 6.83%  | 0.50%  | -4.55% |
| ▲ Café Arábica (US\$ TM) (NYB-ICE)  | 207.80    | 9.95%  | 32.86% | 31.69% | 55.89% |

\*Legend: Variación 1D: 1 Día; 5D: 5 Días; 1M: 1 Mes; YTD: Var.% 31/12/20 a la fecha



Base: 26/04/21=100  
Source: Bloomberg

## Global Overview:

### United States:

The major US indices closed the day with positive returns as investors continue to wait for earnings reports from "Big Tech" and other large companies, as well as expectations of what will be announced after the FED meeting. The DOW JONES +0.24% closed with gains and with more than half of its values in positive territory as a result of future reports, here the Materials +3.16%, Energy +2.11% and Communication Services +1.08% sectors stand out. Along the same lines, the S&P 500 +0.24% closed with gains after an enthusiasm for futures and the FED meeting for this week. Here also stood out the sectors Energy +2.50%, Materials +0.88% and Non-Basic Consumer Products +0.77%. Meanwhile, the 0.03% NASDAQ technology index closed flat but in positive territory as several of the so-called "Big Tech" have not yet published their results for this quarter. On the other hand, the cryptocurrency market continues to present appreciable losses in the Bloomberg Galaxy Cryptocurrency Index -3.33%, in view of the fact that Bitcoin -0.72% presents losses in the day destroying the recovery that it had had last week. Thus, DOW JONES +0.24%; S&P 500 +0.24%; NASDAQ +0.03% ended the day with gains

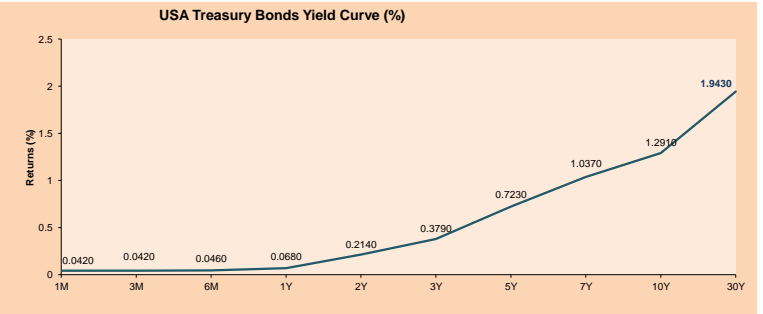
### Europe:

The main European markets closed the day with losses, following the global sentiment. Major indices closed with slight losses due to investors' caution. On the one hand, they await the Federal Open Market Committee meeting later this week for clues as to when the central bank may begin tapering its US stimulus program. On the other hand, regulatory pressure from the Chinese government and tensions between China and the U.S. hurt investment confidence. In Europe, the STOXX 600 snapped a four-session upward streak, as Prosus N.V. fell -8.84%, after Beijing intensified its regulatory crackdown on Tencent, in which Prosus held a 28.9% stake. In the UK, the index fell, weighed down by the Chinese government's tightening of educational technologies, and in turn, weighed down by the generalized fall of Asian indices. In Germany, the DAX closed negative after the FO survey showed that business morale unexpectedly fell in July due to supply chain concerns. In terms of corporate results, today reported Michelin -1.99%, Faurecia -5.71%, Ryman +4.39% and Philips -4.23%. Thus, FTSE 100 -0.03%; DAX -0.32%; CAC 40 +0.15%; STOXX 600 -0.08% closed with mostly downbeat results.

### Asia:

The main Asian indexes closed with mixed returns, due to concerns about the new Delta variant and the tightening of restrictions in the region. The China and Hong Kong indices fell as government regulations pertaining to stocks in the education, property and technology sectors causing a sell-off of these. Likewise, the KOSPI of South Korea ended lower, due to concerns about the increase in the case of the new variant and the success of Wall Street shares which caused the massive sale of national shares for reinvestment in them. On the other hand, Australian stocks were unchanged as mining earnings were weighed down by energy and gold stocks. On the other hand, the Japanese NIKKEI ended higher, driven by the rebound in its shares thanks to the corporate profits obtained, although these gains were held back by concerns about the increase in COVID-19 cases due to the Tokyo 2020 Olympic Games. Thus, NIKKEI +1.04%; HANGING SENG -4.13%; CSI 300 -3.22%; S & P / ASX 200 0.00%; KOSPI -0.91% ended up with mixed returns.

| ETFs                           | Curr. | Close  | 1D     | 5D      | 30 D    | YTD     | Exchange  |
|--------------------------------|-------|--------|--------|---------|---------|---------|-----------|
| SPDR S&P 500 ETF TRUST         | USD   | 441.02 | 0.25%  | 3.79%   | 3.38%   | 17.96%  | NYSE Arca |
| ISHARES MSCI EMERGING MARKET   | USD   | 51.51  | -1.90% | -2.24%  | -7.19%  | -0.31%  | NYSE Arca |
| ISHARES IBOXX HIGH YLD CORP    | USD   | 87.82  | -0.15% | 0.85%   | -0.13%  | 0.80%   | NYSE Arca |
| FINANCIAL SELECT SECTOR SPDR   | USD   | 36.47  | 0.58%  | 3.87%   | -1.25%  | 23.71%  | NYSE Arca |
| VANECK GOLD MINERS             | USD   | 33.50  | 1.06%  | 0.93%   | -2.50%  | -7.00%  | NYSE Arca |
| ISHARES RUSSELL 2000 ETF       | USD   | 220.19 | 0.29%  | 4.00%   | -5.20%  | 12.31%  | NYSE Arca |
| SPDR GOLD SHARES               | USD   | 168.16 | -0.24% | -0.85%  | 0.94%   | -5.72%  | NYSE Arca |
| ISHARES 20+ YEAR TREASURY BO   | USD   | 148.06 | -0.30% | -2.24%  | 4.26%   | -6.13%  | NASDAQ GM |
| INVESCO QQQ TRUST SERIES 1     | USD   | 368.49 | 0.08%  | 3.90%   | 5.45%   | 17.45%  | NASDAQ GM |
| ISHARES BIOTECHNOLOGY ETF      | USD   | 163.57 | -1.89% | 1.11%   | 0.27%   | 7.97%   | NASDAQ GM |
| ENERGY SELECT SECTOR SPDR      | USD   | 49.72  | 2.47%  | 5.88%   | -10.16% | 31.19%  | NYSE Arca |
| PROSHARES ULTRA VIX ST FUTUR   | USD   | 28.04  | -2.23% | -21.35% | 1.92%   | -73.67% | Cboe BZX  |
| UNITED STATES OIL FUND LP      | USD   | 49.67  | 0.40%  | 8.36%   | -1.15%  | 50.47%  | NYSE Arca |
| ISHARES MSCI BRAZIL ETF        | USD   | 38.96  | 1.56%  | 2.99%   | -5.07%  | 5.10%   | NYSE Arca |
| SPDR S&P OIL & GAS EXP & PR    | USD   | 84.70  | 3.07%  | 7.27%   | -15.09% | 44.79%  | NYSE Arca |
| UTILITIES SELECT SECTOR SPDR   | USD   | 65.73  | 0.03%  | 0.78%   | 2.74%   | 4.83%   | NYSE Arca |
| ISHARES US REAL ESTATE ETF     | USD   | 106.18 | -0.07% | 2.16%   | 2.86%   | 23.97%  | NYSE Arca |
| SPDR S&P BIOTECH ETF           | USD   | 124.22 | -1.81% | -1.52%  | -10.43% | -11.76% | NYSE Arca |
| ISHARES IBOXX INVESTMENT GRA   | USD   | 135.47 | -0.22% | -0.35%  | 1.49%   | -1.83%  | NYSE Arca |
| ISHARES JP MORGAN USD EMERGI   | USD   | 112.35 | -0.28% | -0.15%  | 0.20%   | -3.07%  | NASDAQ GM |
| REAL ESTATE SELECT SECTOR SPDR | USD   | 46.28  | 0.09%  | 1.69%   | 3.56%   | 26.59%  | NYSE Arca |
| ISHARES CHINA LARGE-CAP ETF    | USD   | 40.49  | -5.53% | -7.58%  | -14.05% | -12.79% | NYSE Arca |
| CONSUMER STAPLES SPDR          | USD   | 71.52  | 0.17%  | 0.97%   | 2.64%   | 6.03%   | NYSE Arca |
| VANECK JR GOLD MINERS          | USD   | 44.31  | 1.56%  | 2.14%   | -6.58%  | -19.31% | NYSE Arca |
| SPDR BBG BARC HIGH YIELD BND   | USD   | 109.73 | -0.14% | 0.84%   | -0.11%  | 0.73%   | NYSE Arca |
| VANGUARD REAL ESTATE ETF       | USD   | 105.90 | 0.05%  | 2.43%   | 2.91%   | 24.69%  | NYSE Arca |
| GRAYSCALE BITCOIN TRUST BTC    | USD   | 33.79  | 24.27% | 33.82%  | 22.07%  | 5.59%   | OTC US    |



Source: Bloomberg

Capital Market Laboratory Coordinator: Economist Bruno Bellido  
Collaboration: Maria Camarena, Alonso Garcia, Adrian Paredes y Jairo Valverde  
email: pulsobursatil@ulima.pe  
facebook: www.facebook.com/pulsobursatil.uy

The content of this document is just for informational purposes. The information and opinions expressed should not be considered as recommendations for future decisions. Under any circumstances, the Capital Market Laboratory of University of Lima will be responsible for the use of the statements in this document.

LIMA

Stocks

| Ticker          | Currency | Price  | 1D*    | 5D*    | 30D*   | YTD*    | Frequency | Volume (US\$) | Beta | Dividend Yield (%) | Price Earning | Market Cap. (M US\$) | Economic Sector* | Index Weight |
|-----------------|----------|--------|--------|--------|--------|---------|-----------|---------------|------|--------------------|---------------|----------------------|------------------|--------------|
| ▼ ALICORC1 PE** | S/.      | 6.15   | -0.02% | 0.97%  | -4.67% | -11.30% | 105.26%   | 808,727       | 0.98 | 4.07               | 11.60         | 1,340.90             | Industrial       | 3.53%        |
| ▲ ATACOCB1 PE** | S/.      | 0.09   | 0.00%  | 0.00%  | -8.16% | -34.78% | 36.84%    | 4,155         | 1.18 | 0.00               | -             | 21.75                | Mining           | 1.02%        |
| ▲ BACKUSH1 PE** | S/.      | 19.01  | 2.76%  | 0.11%  | 12.49% | -5.66%  | 73.68%    | 51,574        | 0.75 | 6.77               | 9.17          | 6,464.03             | Industrial       | 0.82%        |
| ▲ BAP PE**      | US\$     | 120.76 | 1.43%  | 3.69%  | 1.38%  | -24.81% | 105.26%   | 459,645       | 1.14 | 0.00               | -             | 11,397.61            | Diverse          | 5.82%        |
| ▲ BVN PE**      | US\$     | 8.80   | 3.17%  | 8.24%  | -5.48% | -26.67% | 94.74%    | 63,892        | 1.13 | 0.00               | -             | 2,421.42             | Mining           | 5.88%        |
| ▼ CASAGRC1 PE** | S/.      | 3.65   | -7.59% | -8.75% | 1.39%  | -23.16% | 68.42%    | 77,182        | 1.18 | 20.49              | 2.72          | 78.65                | Agricultural     | 1.31%        |
| ▼ BBVAC1 PE**   | S/.      | 1.94   | 2.11%  | 7.78%  | 4.86%  | -7.44%  | 105.26%   | 374,560       | 1.10 | 2.25               | 28.82         | 3,353.91             | Finance          | 2.85%        |
| ▼ CORAREH1 PE** | S/.      | 1.04   | -0.95% | 5.05%  | 5.05%  | 16.85%  | 105.26%   | 118,183       | 1.32 | 22.96              | 2.07          | 332.83               | Industrial       | 1.72%        |
| ▼ CPACASC1 PE** | S/.      | 4.86   | -0.21% | -1.02% | -3.57% | -8.30%  | 94.74%    | 404,476       | 0.69 | 16.26              | 36.07         | 576.92               | Industrial       | 2.38%        |
| - CVERDEC1 PE** | US\$     | 15.00  | 0.00%  | -5.36% | -6.25% | -28.30% | 100.00%   | 589,741       | 1.45 | 3.81               | 8.88          | 5,250.84             | Mining           | 5.25%        |
| - ENGEPEC1 PE** | S/.      | 2.08   | 0.00%  | 6.67%  | 4.52%  | 4.00%   | 63.16%    | 2,507         | 0.68 | 9.49               | 12.53         | 1,510.40             | Public Services  | 1.44%        |
| ▲ ENDISPC1**    | S/.      | 3.90   | 1.30%  | 1.30%  | 1.30%  | -27.78% | 63.16%    | 21,014        | 0.79 | 4.38               | 8.77          | 637.04               | Public Services  | 0.98%        |
| ▲ FERREYC1 PE** | S/.      | 1.77   | 0.00%  | 9.26%  | 25.53% | 1.72%   | 105.26%   | 617,336       | 1.07 | 10.29              | 7.82          | 441.76               | Diverse          | 4.90%        |
| ▲ AENSZAC1 PE** | S/.      | 1.43   | 2.14%  | 0.00%  | 10.00% | -17.82% | 78.95%    | 351,740       | 0.74 | 0.00               | -             | 318.94               | Diverse          | 4.05%        |
| ▲ IFS PE**      | US\$     | 23.21  | 1.13%  | 1.22%  | -8.08% | -24.98% | 94.74%    | 11,234        | 1.21 | 3.32               | 13.73         | 2,679.54             | Diverse          | 7.22%        |
| - INRETC1 PE**  | US\$     | 36.50  | 0.00%  | 0.55%  | 2.67%  | -6.89%  | 105.26%   | 615,704       | 0.80 | 1.87               | 78.28         | 3,752.47             | Diverse          | 5.28%        |
| ▲ LUSURC1 PE**  | S/.      | 11.00  | 0.00%  | 1.38%  | 0.46%  | -56.88% | 68.42%    | 743           | 0.73 | 0.00               | 12.08         | 1,370.19             | Public Services  | 1.81%        |
| ▲ MINSUR1 PE**  | S/.      | 2.26   | 0.44%  | 2.26%  | -7.76% | 22.16%  | 100.00%   | 92,076        | 0.95 | 14.78              | 4.46          | 1,666.69             | Mining           | 3.09%        |
| - PML PE**      | US\$     | 0.09   | 0.00%  | -5.26% | -7.22% | -15.09% | 36.84%    | 80            | 1.44 | 0.00               | -             | 23.79                | Mining           | 2.12%        |
| ▲ RELAPAC1 PE** | S/.      | 0.15   | 2.04%  | 2.74%  | 4.90%  | 117.39% | 100.00%   | 53,018        | 1.11 | 0.00               | 2.72          | 319.21               | Industrial       | 2.12%        |
| ▲ SCCO PE**     | US\$     | 65.22  | 4.25%  | 8.70%  | 0.17%  | -1.03%  | 73.68%    | 6,479         | 0.98 | 3.37               | 17.04         | 50,419.84            | Mining           | 2.14%        |
| - SIDERC1 PE**  | S/.      | 1.01   | 0.00%  | 4.12%  | 8.60%  | 18.82%  | 84.21%    | 11,306        | 0.93 | 22.23              | 5.05          | 229.40               | Industrial       | 1.43%        |
| - TV PE**       | US\$     | 0.17   | 0.00%  | 1.21%  | -4.57% | 13.61%  | 78.95%    | 27,609        | 1.22 | 0.00               | -             | 165.18               | Mining           | 2.93%        |
| - UNACEMC1 PE** | S/.      | 1.35   | 0.00%  | 12.50% | 13.45% | -12.90% | 105.26%   | 374,615       | 1.11 | 3.41               | 10.58         | 627.85               | Industrial       | 3.00%        |
| ▲ VOLCABC1 PE** | S/.      | 0.45   | 0.22%  | 0.00%  | -3.40% | -12.69% | 105.26%   | 564,492       | 1.55 | 0.00               | -             | 473.43               | Mining           | 5.90%        |
| ▼ NEXAPEC1 PE** | S/.      | 2.70   | -1.82% | -5.26% | -6.90% | -4.59%  | 26.32%    | 1,381         | 1.10 | 0.00               | 19.87         | 912.81               | Mining           | 1.56%        |

Quantity of shares: 26  
 Source: Bloomberg, Económica  
 \* Bloomberg Industry Classification System  
 \*\* PER is used in the stock market and original currency of the instrument  
 \*Legend: Variation 1D: 1 Day; 5D: 5 Days; 1M: 1 Month; YTD: Var.% 12/31/20 to date

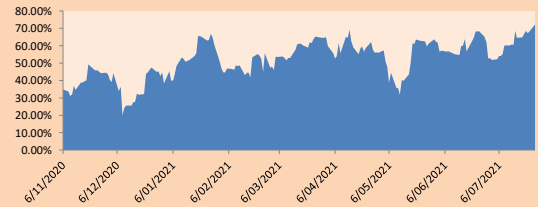
Sectorial Indices

|                       | Close    | 1D*    | 5D*   | 30D*   | YTD*    | Beta |
|-----------------------|----------|--------|-------|--------|---------|------|
| ▲ S&P/BVLMining       | 386.37   | 2.94%  | 5.97% | -3.73% | -0.92%  | 0.99 |
| ▼ S&P/BVLConsumer     | 1,053.55 | -0.01% | 0.82% | 2.34%  | -3.22%  | 0.76 |
| ▲ S&P/BVLIndustrials  | 191.89   | 0.30%  | 5.19% | 10.84% | 0.70%   | 0.86 |
| ▲ S&P/BVLFinancials   | 847.39   | 0.94%  | 2.43% | -1.28% | -18.04% | 1.10 |
| ▲ S&P/BVLConstruction | 202.28   | 0.40%  | 3.54% | 5.55%  | -3.27%  | 0.78 |
| ▲ S&P/BVLPublicSvcs   | 524.28   | 0.20%  | 2.67% | 1.20%  | -14.63% | 0.41 |
| ▲ S&P/BVLElectricUtil | 511.83   | 0.20%  | 2.67% | 1.20%  | -14.63% | 0.41 |

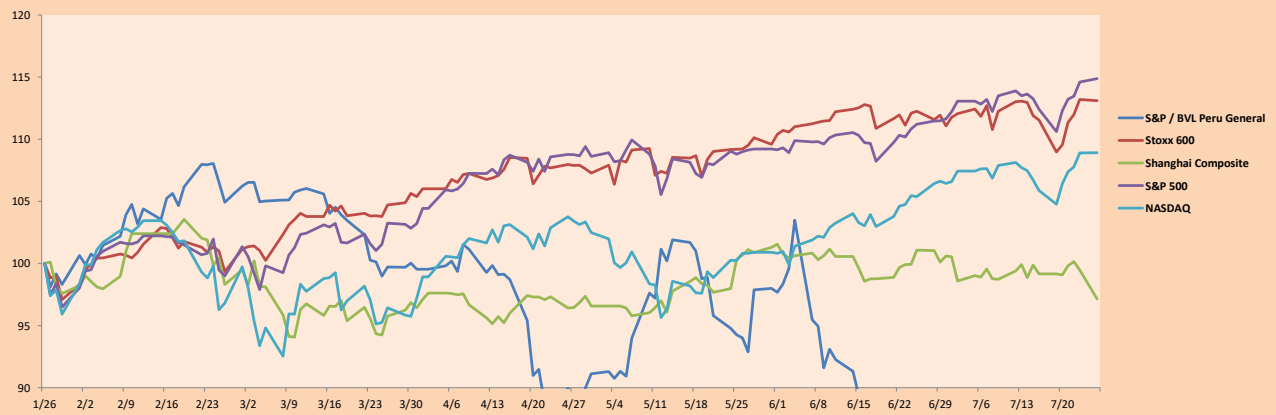
S&P/BVLConstructionTRPEN

\*Legend: Variation 1D: 1 Day; 5D: 5 Days; 1M: 1 Month; YTD: Var.% 12/31/20 to date

Correlation Graph of Returns of Mining Index against Metallic Index of London (3 months)



Indices (6 months)



Base: 26/01/21=100  
 Source: Bloomberg

Capital Market Laboratory Coordinator: Economist Bruno Bellido  
 Collaboration: Maria Camarena, Alonso García, Adrian Paredes y Jairo Valverde  
 email: pulsohorsatil@ulima.edu.pe  
 facebook: www.facebook.com/pulsohorsatil.ul

### SOVEREIGN RATING

**RISK RATINGS**

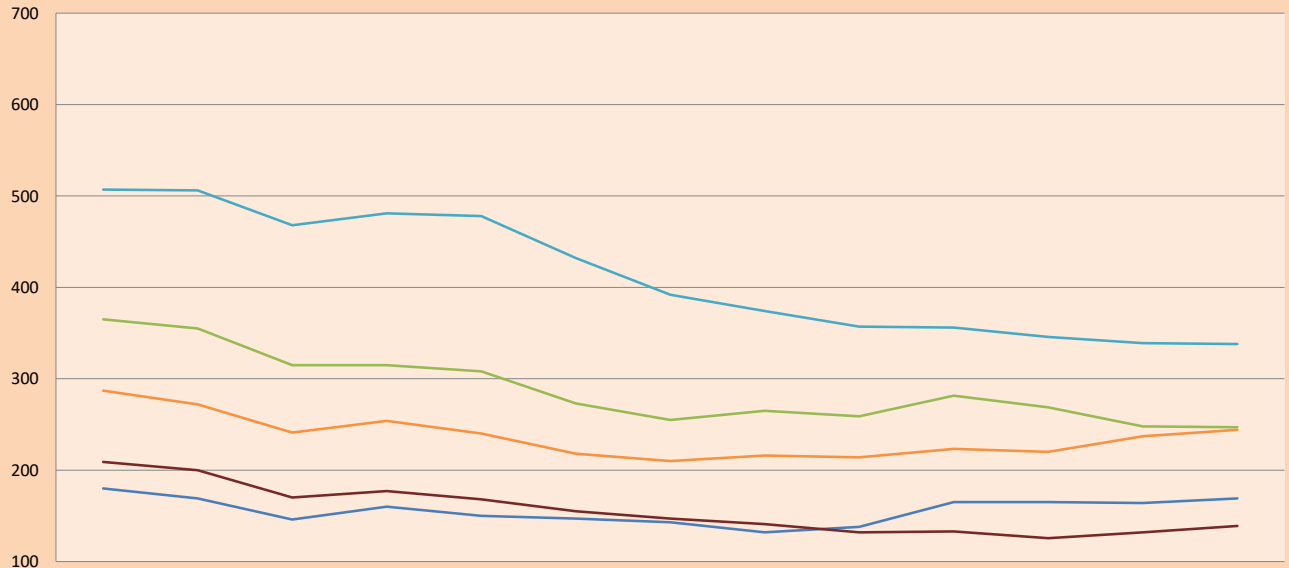
| Moody's | S&P  | Fitch |  |
|---------|------|-------|--|
| Aaa     | AAA  | AAA   | Prime  |
| Aa1     | AA+  | AA+   | High credit quality  |
| Aa2     | AA   | AA    |  |
| Aa3     | AA-  | AA-   |  |
| A1      | A+   | A+    | Medium-high grade, with low credit risk                                  |
| A2      | A    | A     |  |
| A3      | A-   | A-    |  |
| Baa1    | BBB+ | BBB+  | Moderate Credit Risk   |
| Baa2    | BBB  | BBB   |  |
| Baa3    | BBB- | BBB-  |  |
| Ba1     | BB+  | BB+   | It has speculative elements and it is subject to substantial credit risk |
| Ba2     | BB   | BB    |  |
| Ba3     | BB-  | BB-   |  |
| B1      | B+   | B+    | It is considered speculative and it has high credit risk                 |
| B2      | B    | B     |  |
| B3      | B-   | B-    |  |
| Caa1    | CCC+ |       | Bad credit conditions and it is subject to high credit risk              |
| Caa2    | CCC  |       |  |
| Caa3    | CCC- |       |  |
| Ca      | CC   | CCC   | Very close to default or in default                                      |
|         | C    | DDD   |  |
| C       | D    | DD    |  |

Source: Bloomberg

| Latin America Credit Rating |         |       |      |
|-----------------------------|---------|-------|------|
| Clasificadora de riesgo     |         |       |      |
| Country                     | Moody's | Fitch | S&P  |
| Peru                        | A3      | BBB+  | BBB+ |
| México                      | Ba2     | BB-   | BB-  |
| Venezuela                   | C       | WD    | SD   |
| Brazil                      | Ba2     | BB-   | BB-  |
| Colombia                    | Baa2    | BB+   | BB+  |
| Chile                       | A1      | A-    | A    |
| Argentine                   | Ca      | WD    | CCC+ |
| Panama                      | Baa2    | BBB-  | BBB  |

Source: Bloomberg

### LATAM Country Risk (bps)



|          | Jun-20 | Jul-20 | Ago-20 | Set-20 | Oct-20 | Nov-20 | Dic-20 | Ene-21 | Feb-21 | Mar-21 | Abr-21 | May-21 | Jun-21 |
|----------|--------|--------|--------|--------|--------|--------|--------|--------|--------|--------|--------|--------|--------|
| Perú     | 180    | 169    | 146    | 160    | 150    | 147    | 143    | 132    | 138    | 165    | 165    | 164    | 169    |
| Brasil   | 365    | 355    | 315    | 315    | 308    | 273    | 255    | 265    | 259    | 281    | 269    | 248    | 247    |
| México   | 507    | 506    | 468    | 481    | 478    | 432    | 392    | 374    | 357    | 356    | 346    | 339    | 338    |
| Colombia | 287    | 272    | 241    | 254    | 240    | 218    | 210    | 216    | 214    | 223    | 220    | 237    | 244    |
| Chile    | 209    | 200    | 170    | 177    | 168    | 155    | 147    | 141    | 132    | 133    | 126    | 132    | 139    |

Source: BCRP

Capital Market Laboratory Coordinator: Economist Bruno Bellido  
Collaboration: María Camarena, Alonso García, Adrian Paredes y Jairo Valverde  
email: pulsohorsatil@ulima.edu.pe  
facebook: www.facebook.com/pulsohorsatil.ul