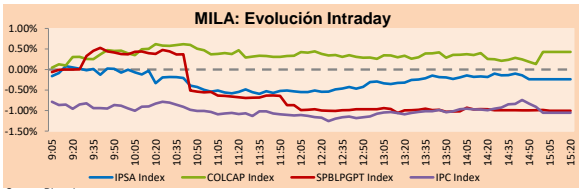


MILA

Lima, August 4, 2021

Main Indexes	Close	1 D	5 D	1 M	YTD	Cap. Burs. (US\$ bill)
▲ IPSA (Chile)	4,211.48	0.11%	0.94%	-1.77%	0.82%	109.25
▲ IGPA (Chile)	21,043.80	0.01%	0.76%	-2.28%	0.17%	129.83
▲ COLSC (Colombia)	918.35	-0.39%	-1.88%	-5.24%	-13.28%	4.37
▲ COLCAP (Colombia)	1,240.84	0.43%	-0.18%	-3.76%	-13.70%	71.82
▼ S&P/BVL (Perú)*	17,447.67	-1.00%	-6.94%	-7.99%	-16.21%	86.86
▼ S&P/BVL SEL (Perú)	464.94	-0.68%	-6.22%	-6.35%	-15.68%	78.17
▼ S&P/BVL LIMA 25	22,719.57	-0.78%	-7.04%	-7.25%	-9.84%	86.14
▼ IPC (México)	51,195.43	-0.85%	-0.29%	1.27%	16.18%	314.19
▲ S&P MILA 40	447.14	0.12%	-2.62%	-7.67%	-16.36%	6,276.64

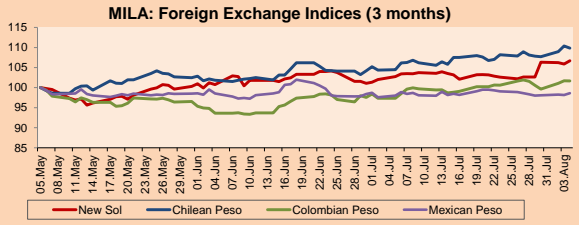
*Legend: Variation 1D: 1 day; 5D: 5 days; 1M: 1 Month; YTD: Var% 12/31/20 to date



Source: Bloomberg

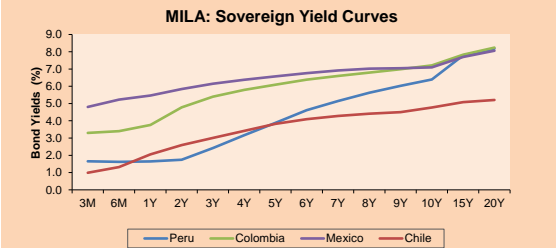
Currency	Price	1D*	5D*	30 D*	YTD*
▲ Sol (PEN)	4,081.77	-0.79%	3.95%	3.84%	12.82%
▲ Chilean Peso (CLP)	774.17	-0.48%	1.59%	5.13%	8.77%
▼ Colombian Peso (COP)	3,909.46	-0.04%	0.10%	4.44%	13.99%
▲ Mexican Peso (MXN)	19.98	0.46%	0.29%	0.62%	0.32%

*Legend: Variation 1D: 1 day; 5D: 5 days; 1M: 1 Month; YTD: Var% 12/31/20 to date



Base: 05/05/21=100
Source: Bloomberg

Fixed Income	Currency	Price	Bid Yield (%)	Ask Yield (%)	Duration
PERU 7.35 07/21/25	USD	122.569	1.51	1.41	3.53
PERU 4.125 08/25/27	USD	112.232	2.02	1.93	5.36
PERU 8.75 11/21/33	USD	157.586	3.12	3.06	8.61
PERU 6.55 03/14/37	USD	138.866	3.37	3.30	10.24
PERU 5.625 11/18/2050	USD	139.766	3.48	3.44	16.66
CHILE 2.25 10/30/22	USD	102.25	0.61	0.23	1.22
CHILE 3.125 01/21/26	USD	108.372	1.24	1.15	4.20
CHILE 3.625 10/30/42	USD	109.75	3.03	2.97	15.36
COLOM 11.85 03/09/28	USD	157.685	2.51	2.19	4.98
COLOM 10.375 01/28/33	USD	149.986	4.79	4.60	7.71
COLOM 7.375 09/18/37	USD	130.264	4.71	4.65	10.22
COLOM 6.125 01/18/41	USD	118.381	4.70	4.65	12.20
MEX 4 10/02/23	USD	118.381	4.704	4.647	12.2
MEX5.55 01/45	USD	123.044	4.04	4.01	14.34



Source: Bloomberg

Equity

Largest gains	Exchange	Currency	Price	▲ %
ENTEL	Chile	CLP	3870.00	2.87
BANCOLOMBIA-PREF	Colombia	COP	28490.00	2.85
INDUSTRIAS PENOL	Mexico	MXN	288.68	2.60
AGUAS ANDINAS-A	Chile	CLP	153.90	2.60
BANCO CRED INVER	Chile	CLP	31057.00	2.29

Per Turnover	Exchange	Amount (US\$)
GRUPO F BANORT-O	Mexico	64,304,107
WALMART DE MEXIC	Mexico	61,976,753
GRUPO MEXICO-B	Mexico	33,060,884
AMERICA MOVIL-L	Mexico	29,812,161
FONENTA ECON-UBD	Mexico	15,711,026

Largest losses	Exchange	Currency	Price	▼ %
BUENAVENTURA-ADI	Peru	USD	7.99	-6.44
CERVEZAS	Chile	CLP	8241.9	-5.25
CENCOSUD SHOPPIN	Chile	CLP	1098	-3.68
GRUPO TELEV-CPO	Mexico	MXN	51.86	-3.57
FERREYCORP SAA	Peru	PEN	1.45	-3.33

Per Volume	Exchange	Volume
BANCO SANTANDER	Chile	146,641,101
BANCO DE CHILE	Chile	146,115,702
ITAU CORPBANCA	Chile	114,925,671
AMERICA MOVIL-L	Mexico	35,330,307
ENEL AMERICAS SA	Chile	27,194,823

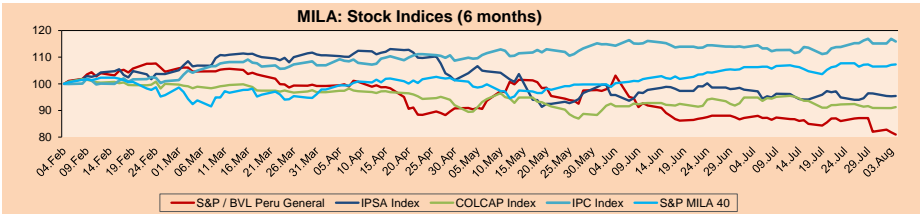
MILA

Peru: The General Index of the BVL ended today's session with a negative result of -1.00%. The index maintains an annual accumulated negative trend of -16.36% in local currency, while the adjusted return in dollars amounts to -25.73%. Then, the S&P / BVL Peru SEL varied by -0.68% while the S&P / BVL LIMA 25 by -0.78%. The PEN spot reached S / 4.0817. Headline: BVL closes in the red, dragged down by the fall in shares in the industrial, construction and mining sectors.

Chile: The IPSA index ended the day with a positive return of +0.11%. The sectors that benefited the most from the conference were Communication Services (+2.87%) and Materials (+0.17%). The stocks with the best performance were Ecopetrol SA (+3.55%) and Aguas Andinas SA (+2.60%). Headline: Business climate in Chile improves, but uncertainty affects investments.

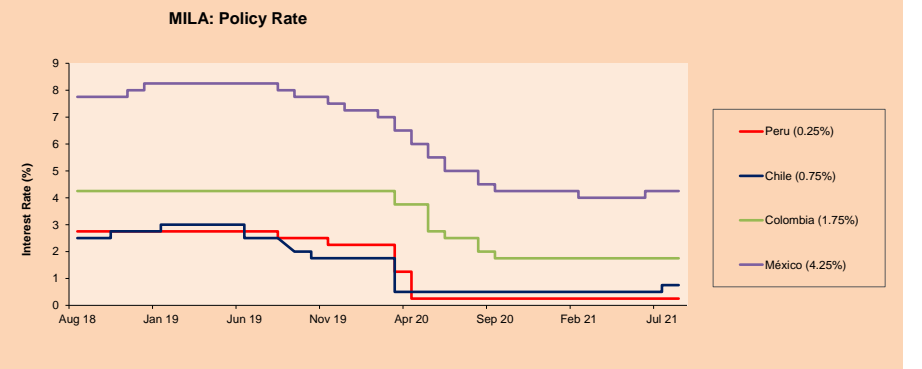
Colombia: The COLCAP index closed today with a positive return of +0.43%. The sectors that benefited the most from the session were Finance (+0.87%) and Basic Products (+0.00%). The stocks with the best performance were BanColombia SA (+2.85%) and Grupo Nutresa SA (+1.03%). Headline: 7.2% growth in the Colombian economy in 2021: Corficolombiana.

Mexico: The IPC index closed the day with a negative return of -0.85%. The sectors that benefited the least from the session were Non-basic consumer products (-1.99%) and Finance (-1.97%). The worst performing stocks were Grupo Televisa SA (-3.57%) and Grupo Aeroportuario del Pacífico (-3.33%) Owner: The Treasury will facilitate the payment of taxes.



Base: 05/02/21=100
Source: Bloomberg

ETFs	Curr.	Close	1D	5D	30 D	YTD	Exchange
▼ iShares MSCI All Peru Caped Index Fund	USD	26.5	-1.56%	-7.99%	-8.18%	-23.59%	NYSE Arca
▲ iShares MSCI All Chile Caped Index Fund	USD	26.62	0.26%	-0.71%	-7.83%	-11.89%	Cboe BZX
▲ Global X MSCI Colombia	USD	9.41	0.16%	-0.84%	-7.97%	-17.17%	NYSE Arca
▲ iShares MSCI Mexico Capped	USD	49.05	-1.59%	-0.53%	1.34%	14.10%	NYSE Arca
▲ iShares MSCI Emerging Markets	USD	52.46	0.52%	1.20%	-4.24%	1.53%	NYSE Arca
▲ Vanguard FTSE Emerging Markets	USD	51.78	0.25%	0.98%	-4.04%	3.33%	NYSE Arca
▲ iShares Core MSCI Emerging Markets	USD	64.17	0.41%	1.06%	-3.76%	3.43%	NYSE Arca
▲ iShares JP Morgan Emerging Markets Bonds	USD	62.72	0.21%	0.93%	-1.72%	2.69%	Cboe BZX
▼ Morgan Stanley Emerging Markets Domestic	USD	6.2	-0.32%	0.98%	1.64%	-1.43%	New York



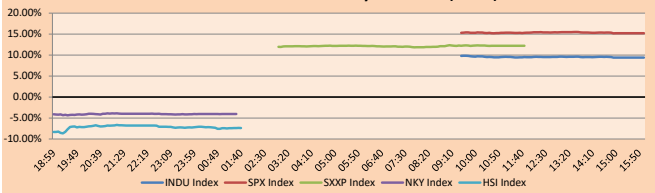
Source: Bloomberg

WORLD

Main Indices	Close	1 D*	5 D*	1 M*	YTD*	Market Cap. (US\$ Mill.)
▼ Dow Jones (USA)	34,792.67	-0.92%	-0.40%	0.02%	13.68%	10,790,942
▼ Standard & Poor's 500 (EEUU)	4,402.66	-0.46%	0.05%	1.16%	17.21%	38,897,836
▲ NASDAQ Composite (USA)	14,780.53	0.13%	0.12%	0.36%	14.68%	24,820,008
▲ Stoxx EUROPE 600 (Europe)	468.22	0.61%	1.41%	2.15%	17.34%	11,005,167
▲ DAX (Germany)	15,692.13	0.88%	0.78%	0.19%	14.38%	1,185,674
▲ FTSE 100 (United Kingdom)	7,123.86	0.26%	1.53%	-0.57%	10.27%	1,494,762
▲ CAC 40 (France)	6,746.23	0.33%	2.07%	2.72%	21.52%	1,896,189
▲ IBEX 35 (Spain)	8,792.90	0.23%	0.68%	-1.72%	8.91%	499,746
▲ MSCI AC Asia Pacific Index	201.17	0.27%	2.41%	-2.45%	0.62%	25,827,038
▲ HANG SENG (Hong Kong)	26,426.55	0.88%	3.74%	-6.10%	-2.95%	3,968,267
▲ SHANGHAI SE Comp. (China)	3,477.22	0.85%	3.44%	-1.62%	0.12%	6,828,747
▼ NIKKEI 225 (Japan)	27,584.08	-0.21%	0.01%	-3.16%	0.91%	3,872,586
▼ S&P/ASX 200 (Australia)	7,503.18	0.36%	1.68%	2.52%	13.84%	1,772,396
▼ KOSPI (South Korea)	3,280.38	-0.85%	-0.29%	-0.33%	14.23%	1,938,171

*Legend: Variation 1D: 1 Day; 5D: 5 Days; 1M: 1 Month; YTD: Var.% 12/31/20 to date

Global Markets: Intraday Evolution (var %)

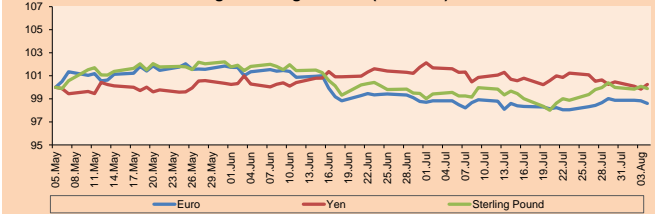


Source: Bloomberg

Currency	Price	1 D*	5 D*	1 M*	YTD*
▼ Euro	1.1837	-0.23%	-0.07%	-0.23%	-3.10%
▲ Yen	109.4800	0.40%	-0.39%	-1.34%	6.03%
▼ Sterling Pound	1.3889	-0.19%	-0.09%	0.33%	1.60%
▼ Yuan	6.4662	-0.06%	-0.38%	0.03%	-0.93%
▼ Hong Kong Dollar	7.7754	-0.04%	-0.07%	0.10%	0.29%
▼ Brazilian Real	5.1689	-0.55%	1.02%	1.45%	-0.57%
▲ Argentine Peso	96.8349	0.03%	0.23%	0.99%	15.08%

*Legend: Variation 1D: 1 Day; 5D: 5 Days; 1M: 1 Month; YTD: Var.% 12/31/20 to date

Foreign Exchange Indices (3 months)

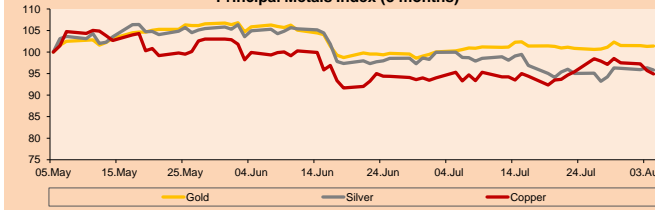


Base: 05/05/21=100
Source: Bloomberg

Commodities	Close	1 D*	5 D*	1 M*	YTD*
▲ Oro (US\$ Oz. T) (LME)	1,811.74	0.07%	0.26%	1.11%	-4.56%
▼ Plata (US\$ Oz. T) (LME)	25.38	-0.56%	1.67%	-4.15%	-3.87%
▼ Cobre (US\$ TM) (LME)	9,443.75	-0.82%	-2.28%	-0.40%	21.87%
▲ Zinc (US\$ TM) (LME)	2,964.45	0.18%	-0.09%	1.23%	8.61%
▼ Petróleo WTI (US\$ Barril) (NYM)	68.15	-3.42%	-5.86%	-8.35%	41.42%
▼ Estarño (US\$ TM) (LME)	35,940.00	-0.28%	2.06%	9.47%	74.94%
▼ Plomo (US\$ TM) (LME)	2,440.00	0.06%	2.62%	6.60%	23.50%
▼ Azúcar #11 (US\$ Libra) (NYB-ICE)	17.93	-0.28%	-3.65%	-1.21%	27.71%
▼ Cacao (US\$ TM) (NYB-ICE)	2,393.00	-1.36%	-1.49%	3.19%	-4.51%
▲ Café Arabica (US\$ TM) (NYB-ICE)	175.65	0.46%	-12.37%	14.77%	31.77%

*Legend: Variación 1D: 1 Día; 5D: 5 Días; 1M: 1 Mes; YTD: Var.% 31/12/20 a la fecha

Principal Metals Index (3 months)



Base: 05/05/21=100
Source: Bloomberg

Equity

Germany (Stocks from DAX Index)

Largest gains	Curr.	Price	▲ %	Exchange	Largest losses	Curr.	Price	▼ %	Exchange
ADS GY	EUR	336.25	4.18	Xetra	EDAN GY	EUR	10.38	-1.20	Xetra
SIE GY	EUR	137.8	2.18	Xetra	ALV GY	EUR	190.5	-0.85	Xetra
DHER GY	EUR	130.1	2.08	Xetra	CON GY	EUR	113.82	-0.82	Xetra
LIN GY	EUR	258.35	1.39	Xetra	MTX GY	EUR	204.8	-0.78	Xetra

Europe (Stocks from STOXX EUROPE 600)

Largest gains	Curr.	Price	▲ %	Exchange	Largest losses	Curr.	Price	▼ %	Exchange
SESS FP	EUR	7.132	9.86	EN Paris	CBK GY	EUR	5.126	-5.81	Xetra
ENT LN	Gbp	1912.5	6.10	Londres	DOCS LN	Gbp	409.2	-4.35	Londres
NOVOB DC	DKK	611	4.78	Copenhagen	ROR LN	Gbp	324	-4.03	Londres
AMS SE	CHF	18.88	4.71	SIX Swiss Ex	PSON LN	Gbp	786.2	-3.58	Londres

Global Overview:

United States:

The major U.S. indices ended the session mostly lower due to employment data. U.S. private payrolls rose below expectations in July, likely restrained by shortages of workers and raw materials. Employers added 300,000 jobs last month according to ADP's National Employment Report, compared to a forecast increase of 695,000. However, demand from the service sector increased. Meanwhile, Federal Reserve Vice Chairman Richard Clarida signaled that the central bank should be in a position to begin raising interest rates in 2023. Thus, the S&P 500 closed lower dragged down by the Energy -2.93% and Industrials -1.37% sectors. However, the NASDAQ closed higher after the ADP report showed that service sector activity increased at the beginning of last month, which fueled investors' expectations of an economic rebound. On the commodities front, oil prices fell for a third day due to a surprise build in U.S. crude oil stocks. Thus, S&P 500 -0.46%, DOW JONES -0.92% closed lower, while NASDAQ +0.13% ended higher.

Europe:

Major European markets closed the trading day higher, as investors closely monitored corporate earnings from large firms, along with positive economic data and a favorable development in the COVID-19 situation. European stocks closed at record highs, with technology stocks hitting 20-year highs. The STOXX 600 index rose to a high of 468.22 points, extending its winning streak to a third day. Analysts expect companies in the index to post a 139.6% increase in second-quarter earnings from a year earlier. In economic data from the continent, a survey showed that eurozone business activity accelerated in July, expanding at its fastest pace in 15 years. In the U.K., the index posted gains, but lagged the rest of the continent as the PMI fell to 59.2 from June's 62.2. This drop is explained by the thousands of workers who had to self-insulate due to the increase in cases of the delta variant. Among the outstanding stock market shares we have Siemens Energy +2.23% and Roche +0.35%. Thus, the STOXX 600 +0.61%, CAC 40 +0.33%, FTSE 100 +0.26%, DAX +0.88% closed the day with positive performances.

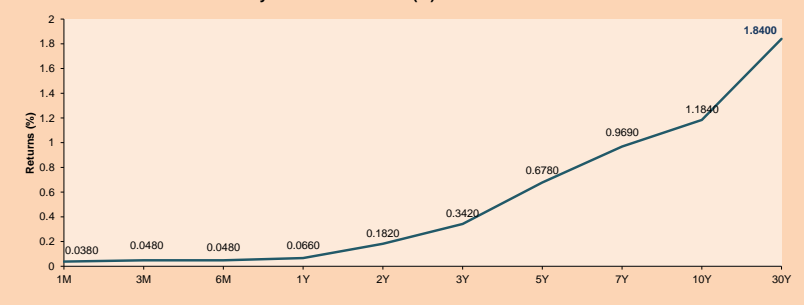
Asia:

The main indexes of the Asian continent ended the day with positive returns, mostly thanks to positive data on the Chinese economy, although the concern about the delta variant is still a brake on the gains. The Chinese market closed with positive results thanks to the good economic results and the gains in the Materials sectors +4.10%, Energy +3.74% and Technology +2.80%. In turn, the Hong Kong market was also influenced by economic results and presented gains in the Technology +5.48%, Healthcare +3.12% and Industrial +2.33% sectors. On the other hand, the Japanese market closed lower as a result of the acquisition of ARM LTD. by Nvidia Corp. continued. This contract is valued at approximately 40 billion dollars. In turn, the Korean market also received the Chinese economic data furiously; however, the delta variant continues to put pressure on this market. Finally, the Australian market closed with gains as a result of gains in the Materials sectors +1.13% and Energy +0.87% in view of better prices of commodities. Thus, NIKKEI -0.21%; HANG SENG +0.88%; CSI 300 +0.90%; S & P / ASX 200 +0.38%; SHANGHAI COMPOSITE +0.85%; KOSPI +1.34% closed the day mostly higher.

ETFs

ETFs	Curr.	Close	1D	5D	30 D	YTD	Exchange
SPDR S&P 500 ETF TRUST	USD	438.98	-0.49%	0.03%	1.21%	17.41%	NYSE Arca
ISHARES MSCI EMERGING MARKET	USD	52.46	0.52%	1.20%	-4.24%	1.53%	NYSE Arca
ISHARES IBOXX HIGH YLD CORP	USD	87.28	-0.18%	-0.56%	-0.89%	-0.02%	NYSE Arca
FINANCIAL SELECT SECTOR SPDR	USD	36.63	-0.84%	0.60%	-0.84%	24.25%	NYSE Arca
VANECK GOLD MINERS	USD	34.78	-0.88%	1.73%	1.05%	-3.44%	NYSE Arca
ISHARES RUSSELL 2000 ETF	USD	218.11	-1.25%	-1.23%	-4.83%	11.25%	NYSE Arca
SPDR GOLD SHARES	USD	169.53	0.02%	0.14%	1.34%	-4.95%	NYSE Arca
ISHARES 20+ YEAR TREASURY BO	USD	151.06	0.21%	0.94%	4.15%	-4.23%	NASDAQ GM
INVECO QQQ TRUST SERIES 1	USD	367.34	0.14%	0.41%	2.43%	17.08%	NASDAQ GM
ISHARES BIOTECHNOLOGY ETF	USD	172.15	1.62%	3.20%	4.50%	13.64%	NASDAQ GM
ENERGY SELECT SECTOR SPDR	USD	48.51	-2.71%	-2.41%	-11.30%	27.99%	NYSE Arca
PROSHARES ULTRA VIX ST FUTUR	USD	27.83	-0.29%	-1.63%	2.59%	73.87%	Choe BX
UNITED STATES OIL FUND LP	USD	47.20	-3.98%	-5.07%	-7.32%	42.99%	NYSE Arca
ISHARES MSCI BRAZIL ETF	USD	37.64	-1.26%	-4.97%	-6.53%	1.54%	NYSE Arca
SPDR S&P OIL & GAS EXP & PR	USD	79.10	-4.49%	-5.73%	-18.61%	35.21%	NYSE Arca
UTILITIES SELECT SECTOR SPDR	USD	66.76	-0.15%	0.62%	4.28%	6.48%	NYSE Arca
ISHARES US REAL ESTATE ETF	USD	106.27	-0.39%	-0.17%	3.50%	24.07%	NYSE Arca
SPDR S&P BIOTECH ETF	USD	124.80	-0.02%	-1.95%	-8.59%	-11.35%	NYSE Arca
ISHARES IBOXX INVESTMENT GRA	USD	136.33	0.02%	0.03%	1.46%	-1.30%	NYSE Arca
ISHARES JP MORGAN USD EMERGI	USD	112.63	0.04%	0.27%	0.45%	-2.83%	NASDAQ GM
REAL ESTATE SELECT SECT SPDR	USD	46.44	-0.32%	0.15%	3.85%	27.02%	NYSE Arca
ISHARES CHINA LARGE-CAP ETF	USD	41.36	1.35%	-0.39%	-9.08%	-10.92%	NYSE Arca
CONSUMER STAPLES SPDR	USD	70.60	-1.30%	-0.62%	0.96%	4.67%	NYSE Arca
VANECK JR GOLD MINERS	USD	45.40	-1.26%	1.00%	-4.34%	-16.30%	NYSE Arca
SPDR BGC BANC HIGH YIELD BND	USD	109.00	-0.18%	-0.64%	-0.87%	0.06%	NYSE Arca
VANGUARD REAL ESTATE ETF	USD	105.86	-0.31%	-0.25%	3.24%	24.64%	NYSE Arca
GRAYSCALE BITCOIN TRUST BTC	USD	33.14	3.98%	-5.80%	15.96%	3.56%	OTC US

USA Treasury Bonds Yield Curve (%)



Source: Bloomberg

Capital Market Laboratory Coordinator: Economist Bruno Bellido
Collaboration: Maria Camarena, Alonso García, Adrian Paredes y Jairo Valverde
email: pulsoBursatil@ulima.edu.pe
facebook: www.facebook.com/pulsoBursatil.uy

LIMA

Stocks

Ticker	Currency	Price	1D*	5D*	30D*	YTD*	Frequency	Volume (US\$)	Beta	Dividend Yield (%)	Price Earning	Market Cap. (M US\$)	Economic Sector*	Index Weight
▼ ALICORC1 PE**	S/.	5.35	-0.39%	-1.88%	-5.24%	-13.28%	100.00%	1,469,567	1.04	4.67	11.01	1,117.91	Industrial	3.53%
- ATACOBC1 PE**	S/.	0.09	0.00%	0.00%	-9.00%	-34.06%	38.89%	479	1.17	0.00	-	21.06	Mining	1.02%
- BACKUS1 PE**	S/.	18.00	0.00%	-5.26%	-1.64%	-10.67%	61.11%	370	0.75	0.00	8.69	6,003.50	Industrial	0.82%
▼ BAP PE**	US\$	100.50	-0.96%	-16.94%	-18.29%	-37.42%	100.00%	215,995	1.26	0.00	-	9,485.42	Diverse	5.82%
▼ BVN PE**	US\$	7.99	-6.44%	-8.16%	-10.53%	-33.42%	94.44%	105,313	1.06	0.00	-	2,198.54	Mining	5.88%
▼ CASAGRC1 PE**	S/.	3.50	-3.05%	-5.15%	-12.72%	-26.32%	66.67%	109,779	1.31	21.37	3.19	72.23	Agricultural	1.31%
▼ BBVAC1 PE**	S/.	1.70	-1.73%	-12.82%	-7.10%	-18.89%	100.00%	87,486	1.13	2.57	17.32	2,814.86	Finance	2.85%
- CORARE1 PE**	S/.	1.00	0.00%	-4.76%	-9.09%	12.36%	100.00%	36,848	1.33	23.88	1.98	316.98	Industrial	1.72%
▼ CPACASC1 PE**	S/.	4.88	-0.61%	-3.37%	-2.01%	-7.92%	94.44%	10,043	0.68	16.19	34.86	554.63	Industrial	2.38%
▲ CVERDEC1 PE**	US\$	15.00	1.01%	-3.29%	-8.93%	-28.30%	100.00%	103,860	1.41	3.81	6.71	5,250.84	Mining	5.25%
▲ ENGEPEC1 PE**	S/.	2.08	2.46%	1.46%	-0.95%	4.00%	72.22%	8,092	0.68	9.49	10.84	1,446.60	Public Services	1.44%
▼ ENDISPC1**	S/.	3.50	-6.67%	-10.26%	-9.09%	-35.19%	94.44%	233,895	0.78	4.88	7.70	547.56	Public Services	0.98%
▼ FERREY1 PE**	S/.	1.45	-3.33%	-18.08%	-7.05%	-16.67%	100.00%	218,317	1.14	12.56	4.52	344.61	Diverse	4.90%
- AENZAC1 PE**	S/.	1.45	0.00%	2.11%	6.62%	-16.67%	66.67%	18	0.75	0.00	-	309.74	Diverse	4.05%
▲ IFS PE**	US\$	20.00	0.30%	-13.83%	-18.33%	-35.36%	100.00%	14,861	1.31	3.85	12.28	2,308.95	Diverse	7.22%
▼ INRETC1 PE**	US\$	34.19	-0.47%	-6.07%	-3.69%	-12.78%	100.00%	230,428	0.80	1.99	76.28	3,514.98	Diverse	5.28%
- LUSURC1 PE**	S/.	10.50	0.00%	-5.83%	-7.08%	-58.82%	66.67%	965	0.74	0.00	11.38	1,252.66	Public Services	1.81%
▼ MINSUR1 PE**	S/.	2.13	-0.47%	-7.39%	-13.77%	15.14%	94.44%	261,150	0.96	15.68	3.98	1,504.47	Mining	3.09%
▼ PML PE**	US\$	0.09	-5.56%	-5.56%	-15.00%	-19.81%	44.44%	14,771	1.42	0.00	-	22.47	Mining	2.12%
▲ RELAPAC1 PE**	S/.	0.15	6.29%	4.83%	1.33%	120.29%	88.89%	11,129	1.13	0.00	2.74	309.80	Industrial	2.12%
▼ SCCO PE**	US\$	64.83	-0.03%	0.43%	1.00%	-1.62%	66.67%	39,627	0.89	3.39	17.12	50,118.86	Mining	2.14%
▲ SIDERC1 PE**	S/.	1.03	3.00%	1.98%	8.42%	21.18%	88.89%	50,925	0.94	21.80	5.15	224.06	Industrial	1.43%
▲ TV PE**	US\$	0.17	-1.14%	5.49%	-2.81%	17.69%	72.22%	31,359	1.19	0.00	-	171.11	Mining	2.93%
▼ UNACEMC1 PE**	S/.	1.12	-2.61%	-16.42%	-13.85%	-27.74%	100.00%	14,056	1.15	4.11	8.84	498.89	Industrial	3.00%
▼ VOLCABC1 PE**	S/.	0.39	-2.50%	-12.16%	-19.75%	-25.00%	100.00%	67,300	1.51	0.00	-	389.51	Mining	5.90%
- NEXAPEC1 PE**	S/.	2.55	0.00%	-2.30%	-16.12%	-9.89%	38.89%	1,249	1.10	0.00	7.00	825.07	Mining	1.56%

Quantity of shares: 26
 Source: Bloomberg, Económica
 * Bloomberg Industry Classification System
 ** PER is used in the stock market and original currency of the instrument
 *Legend: Variation 1D: 1 Day; 5D: 5 Days, 1M: 1 Month; YTD: Var.% 12/31/20 to date

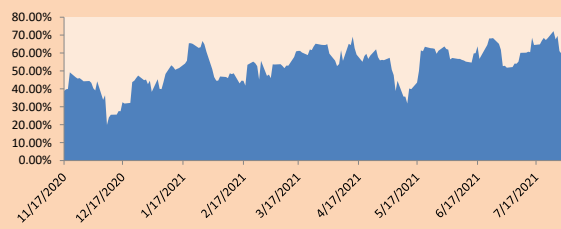
Sectorial Indices

	Close	1D*	5D*	30D*	YTD*	Beta
▼ S&P/BVLMining	389.59	-0.80%	1.25%	-0.36%	-0.09%	0.83
▲ S&P/BVLConsumer	985.79	0.01%	-6.54%	-4.22%	-9.45%	0.78
▼ S&P/BVLIndustrials	174.87	-1.39%	-9.23%	-4.50%	-8.23%	0.89
▼ S&P/BVLFinancials	741.18	-0.09%	-13.11%	-14.71%	-28.31%	1.23
▼ S&P/BVLConstruction	192.06	-0.83%	-5.69%	-3.63%	-8.16%	0.78
▼ S&P/BVLPublicSvcs	510.32	-0.16%	-1.93%	-3.19%	-16.90%	0.39
▼ S&P/BVLElectricUtil	498.20	-0.16%	-1.93%	-3.19%	-16.90%	0.39

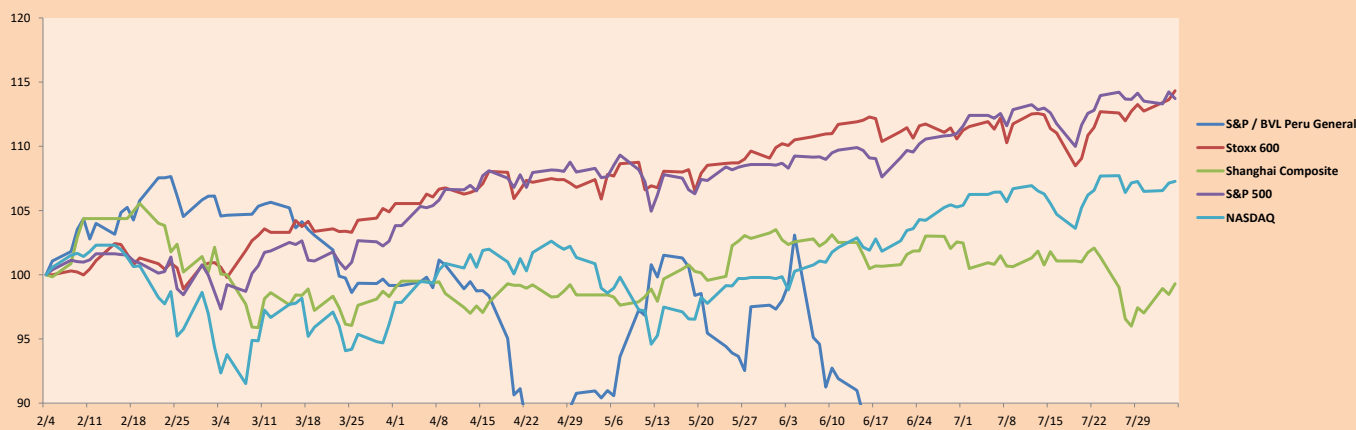
S&P/BVLConstructionTRPEN

*Legend: Variation 1D: 1 Day; 5D: 5 Days, 1M: 1 Month; YTD: Var.% 12/31/20 to date

Correlation Graph of Returns of Mining Index against Metallic Index of London (3 months)



Indices (6 months)



Base: 04/02/21=100
 Source: Bloomberg

Capital Market Laboratory Coordinator: Economist Bruno Bellido
 Collaboration: Maria Camarena, Alonso García, Adrian Paredes y Jairo Valverde
 email: pulsobursatil@ulima.edu.pe
 facebook: www.facebook.com/pulsobursatil.ul

SOVEREIGN RATING

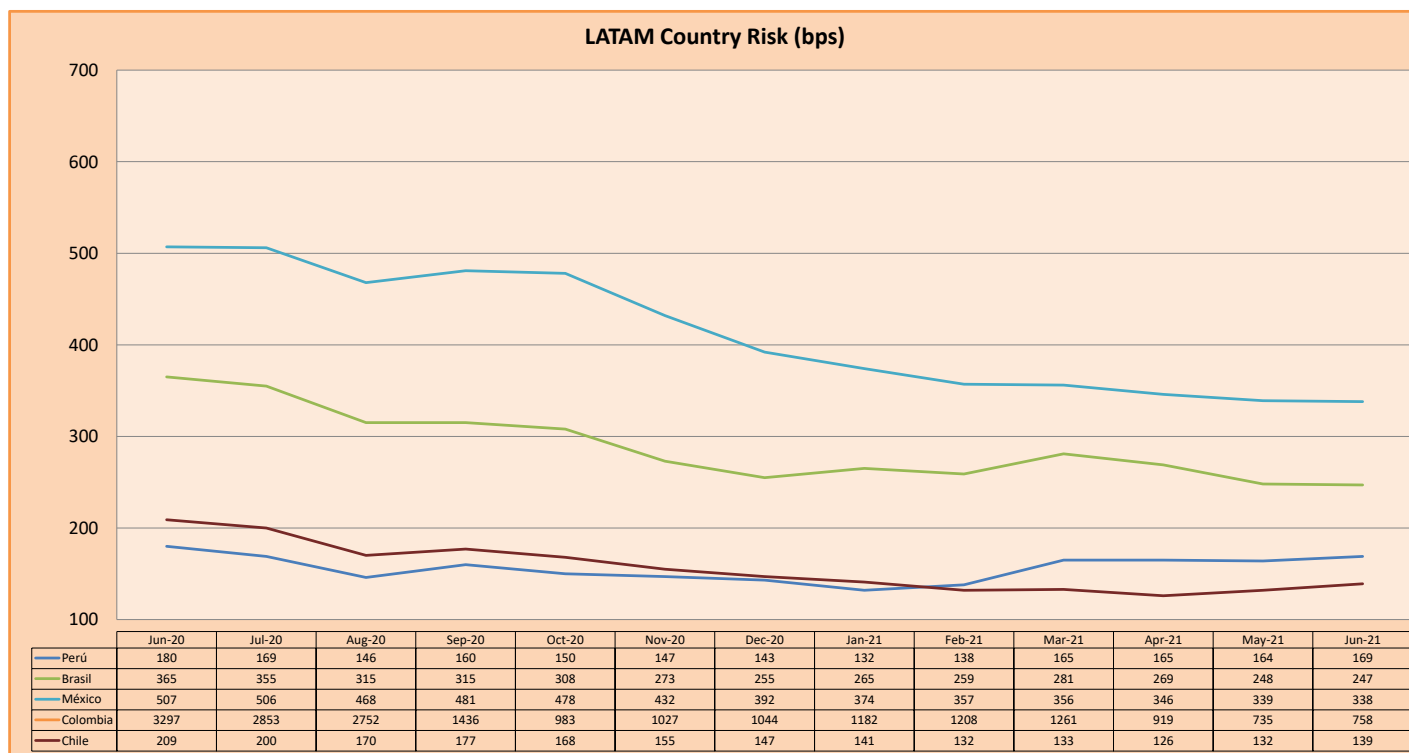
RISK RATINGS

Moody's	S&P	Fitch	
Aaa	AAA	AAA	Prime
Aa1	AA+	AA+	High credit quality
Aa2	AA	AA	
Aa3	AA-	AA-	
A1	A+	A+	Medium-high grade, with low credit risk
A2	A	A	
A3	A-	A-	
Baa1	BBB+	BBB+	Moderate Credit Risk
Baa2	BBB	BBB	
Baa3	BBB-	BBB-	
Ba1	BB+	BB+	It has speculative elements and it is subject to substantial credit risk
Ba2	BB	BB	
Ba3	BB-	BB-	
B1	B+	B+	It is considered speculative and it has high credit risk
B2	B	B	
B3	B-	B-	
Caa1	CCC+		Bad credit conditions and it is subject to high credit risk
Caa2	CCC		
Caa3	CCC-	CCC	
Ca	C		Very close to default or in default
		DDD	
C	D	DD D	

Source: Bloomberg

Latin America Credit Rating			
Clasificadora de riesgo			
Country	Moody's	Fitch	S&P
Peru	A3	BBB+	BBB+
México	Ba2	BB-	BB-
Venezuela	C	WD	SD
Brazil	Ba2	BB-	BB-
Colombia	Baa2	BB+	BB+
Chile	A1	A-	A
Argentina	Ca	WD	CCC+
Panama	Baa2	BBB-	BBB

Source: Bloomberg



Source: BCRP

Capital Market Laboratory Coordinator: Economist Bruno Bellido
Collaboration: María Camarena, Alonso García, Adrian Paredes y Jairo Valverde
email: pulsobursatil@ulima.edu.pe
facebook: www.facebook.com/pulsobursatil.ul