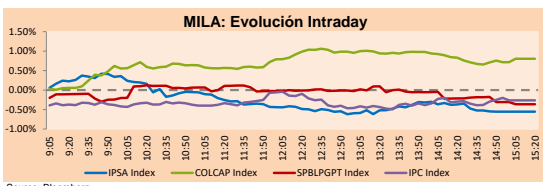


MILA

Lima, Sep 2, 2021

Main Indexes	Close	1 D	5 D	1 M	YTD	Cap. Burs. (US\$ bill)
▼ IPSA (Chile)	4,437.44	-0.30%	-0.14%	5.36%	6.23%	115.58
▼ IGPA (Chile)	22,222.53	-0.31%	0.11%	5.47%	5.78%	138.07
▲ COLSC (Colombia)	966.35	0.27%	-0.15%	3.41%	-8.75%	4.63
▲ COLCAP (Colombia)	1,331.90	0.80%	1.36%	7.76%	-7.37%	77.05
▼ S&P/BVL (Perú)*	17,508.38	-0.36%	3.04%	-1.89%	-15.91%	84.26
▼ S&P/BVL SEL (Perú)	460.64	-0.37%	2.50%	-1.60%	-16.46%	75.77
▼ S&P/BVL LIMA 25	23,527.28	-0.25%	6.27%	2.75%	-6.63%	83.56
▼ IPC (México)	52,087.47	-0.25%	-0.39%	2.39%	18.20%	322.05
▼ S&P MILA 40	473.79	-0.17%	2.51%	5.16%	-11.38%	6,428.29

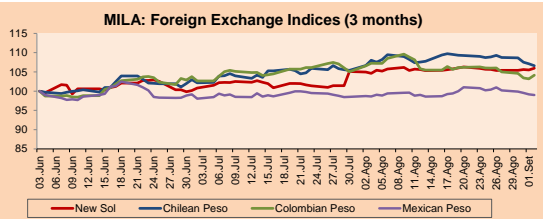
\*Legend: Variation 1D: 1 day; 5D: 5 days; 1M: 1 Month; YTD: Var% 12/31/20 to date



Source: Bloomberg

Currency	Price	1D*	5D*	30 D*	YTD*
▲ Sol (PEN)	4.1014	0.40%	0.52%	1.27%	13.36%
▼ Chilean Peso (CLP)	767.58	-0.48%	-2.45%	-1.33%	7.84%
▲ Colombian Peso (COP)	3,797.56	0.92%	-1.77%	-2.90%	10.72%
▼ Mexican Peso (MXN)	19.96	-0.18%	-1.97%	0.37%	0.23%

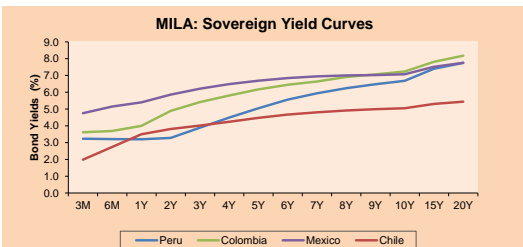
\*Legend: Variation 1D: 1 day; 5D: 5 days; 1M: 1 Month; YTD: Var% 12/31/20 to date



Base: 03/06/21-100

Source: Bloomberg

Fixed Income	Currency	Price	Bid Yield (%)	Ask Yield (%)	Duration
PERU 7.35 07/21/25	USD	122.327	1.46	1.35	3.45
PERU 4.125 08/25/27	USD	112.49	1.94	1.86	5.39
PERU 8.75 11/21/33	USD	157.656	3.09	3.02	8.54
PERU 6.55 03/14/37	USD	138.763	3.36	3.30	10.15
PERU 5.625 11/18/2050	USD	139.307	3.49	3.46	16.59
CHILE 2.25 10/30/22	USD	102.182	0.53	0.15	1.14
CHILE 3.125 01/21/26	USD	108.221	1.25	1.13	4.11
CHILE 3.625 10/30/42	USD	108.854	3.08	3.03	15.22
COLOM 11.85 03/09/28	USD	156.508	2.54	2.28	4.90
COLOM 10.375 01/28/33	USD	149.781	4.79	4.58	7.64
COLOM 7.375 09/18/37	USD	129.96	4.72	4.67	10.10
COLOM 6.125 01/18/41	USD	117.485	4.76	4.71	12.05
MEX 4 10/02/23	USD	117.485	4.76	4.71	12.05
MEX5.55 01/45	USD	123.563	4.01	3.97	14.27



Source: Bloomberg

Equity	Exchange	Currency	Price	▲%
<b>Largest gains</b>				
SOQUIMICH-B	Chile	CLP	41,818.00	3.64
ECOPETROL	Colombia	COP	2,670.00	3.09
CENCOSUD SHOPPIN	Chile	CLP	1,109.10	2.98
ORBIA ADVANCE CO	Mexico	MXN	58.55	2.52
ALICORP-C	Peru	PEN	5.07	2.42
<b>Per Turnover</b>	<b>Exchange</b>	<b>Amount (US\$)</b>		
WALMART DE MEXIC	Mexico	53,621,953		
AMERICA MOVIL-L	Mexico	39,272,628		
GRUPO F BANORT-O	Mexico	32,242,138		
SOQUIMICH-B	Chile	25,255,726		
FALABELLA SA	Chile	20,731,468		

Largest losses	Exchange	Currency	Price	▼%
FERREYCORP SAA	Peru	PEN	1.64	-4.65
CMPC	Chile	CLP	1,620.00	-3.97
ENEL AMERICAS SA	Chile	CLP	102.04	-3.30
BUENAVENTURA-ADI	Peru	USD	7.24	-3.21
BANCO SANTANDER	Chile	CLP	39.78	-2.64
<b>Per Volume</b>	<b>Exchange</b>	<b>Volume</b>		
ITAU CORPBANCA	Chile	1,100,349,532		
BANCO SANTANDER	Chile	408,331,919		
BANCO DE CHILE	Chile	239,838,412		
ENEL CHILE SA	Chile	145,973,668		
ENEL AMERICAS SA	Chile	125,699,986		

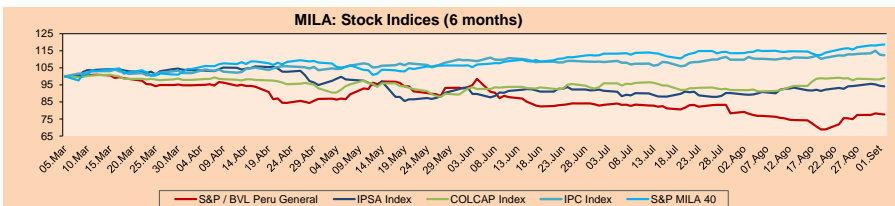
MILA

Peru: The BVL General Index ended today's session with a negative result of -0.36%. The index maintains a negative annual cumulative trend of -15.91% in local currency, while the dollar-adjusted performance declined to -25.83%. Next, the S&P / BVL Peru SEL varied by -0.37% while the S&P / BVL LIMA 25 by -0.25%. The spot PEN reached S/4.1014. Headline: Moody's downgrades Peru's credit rating to Baa1, with stable outlook

Chile: The IPSA index ended the day with a negative return of -0.30%. The worst performing sectors of the day were Information Technology (+2.05%) and Non-Basic Consumer Products (-2.00%). The worst performing stocks of the day were Empresas CMPC SA (-3.97%) and Enel Americas SA (-3.30%). Headline: Chilean stock market falls for the third consecutive day, as fourth pullback progresses

Colombia: The COLCAP index closed today with a positive return of +0.81%. The sectors that benefited the most during the day were Energy (+2.98%) and Utilities (+1.13%). The best performing stocks were Ecopetrol SA (+3.09%) and Grupo de Inversiones Suramericano (+2.33%). Headline: Deal of the day: Argos creates private equity fund with Macquarie; Odinsa will lead this new private equity fund

Mexico: The IPC index closed the day with a negative return of -0.25%. The sectors that lost the most during the day were Financials (-0.87%) and Real Estate (-0.56%). The worst performing stocks were Arca Continental SAB de CV (-2.46%) and Wal-Mart de Mexico SAB de CV (-2.26%). Headline: Mexico's Central Bank improves its economic growth projection for this year

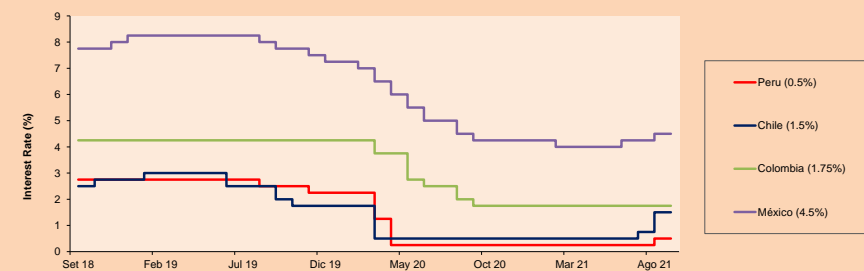


Base: 08/03/21-100

Source: Bloomberg

ETFs	Curr.	Close	1D	5D	30 D	YTD	Exchange
▼ iShares MSCI All Peru Caped Index Fund	USD	26.49	-0.56%	2.99%	-1.60%	-23.62%	NYSE Arca
▼ iShares MSCI All Chile Caped Index Fund	USD	28.36	-0.77%	2.35%	6.82%	-6.12%	Cboe BZX
▲ Global X MSCI Colombia	USD	10.3551	0.26%	3.67%	10.22%	-8.85%	NYSE Arca
▲ iShares MSCI Mexico Capped	USD	50.49	0.30%	2.39%	1.30%	17.45%	NYSE Arca
▼ iShares MSCI Emerging Markets	USD	52.84	-0.45%	3.69%	1.25%	2.26%	NYSE Arca
▼ Vanguard FTSE Emerging Markets	USD	52.65	-0.40%	3.62%	1.94%	5.07%	NYSE Arca
▼ iShares Core MSCI Emerging Markets	USD	64.8	-0.52%	3.68%	1.08%	4.13%	NYSE Arca
▼ iShares JP Moran Emerging Markets Bonds	USD	64.11	-0.03%	2.84%	2.43%	4.96%	Cboe BZX
▼ Morgan Stanley Emerging Markets Domestic	USD	6.28	-0.16%	3.12%	0.96%	-0.16%	New York

MILA: Policy Rate



Source: Bloomberg

Capital Market Laboratory Coordinator: Economist Bruno Bellido  
Collaboration: Maria Camarena, Alonso Garcia, Adrian Paredes y Jairo Valverde  
email: pulsobursatil@ulima.edu.pe  
facebook: www.facebook.com/pulsobursatil.ul

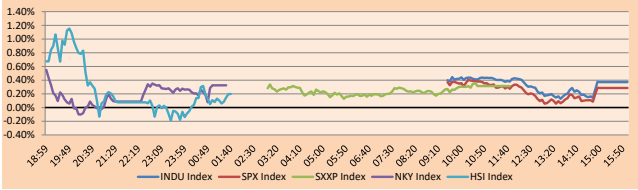
WORLD

Main Indices table with columns: Index Name, Close, 1D, 5D, 1M, YTD, Market Cap. (US\$ Mill.)

Equity

Equity table with columns: Country, Index Name, Curr., Price, Exchange, Largest gains, Largest losses

Global Markets: Intraday Evolution (var %)



Global Overview:

United States:

The American indices closed the session with positive results thanks to gains within the commodities market and a slight optimism regarding tomorrow's reports. The DOW JONES + 0.37% closed with 24 of its 30 values on the rise and the sectors with the best returns of the day were + 2.09%, Health + 1.25% and Industrial + 1.08%.

Europe:

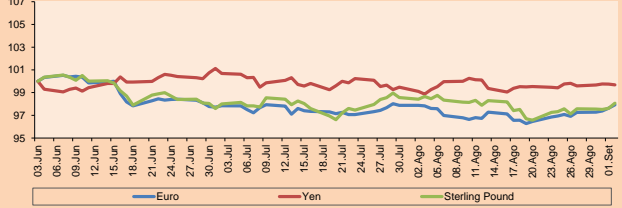
The main indices of the European continent closed the day higher thanks to the increase in the prices of crude oil and other commodities, in turn, the market is waiting for the data to be published tomorrow in the United States.

Asia:

In Asia, major indices closed the day mixed as investors await the US jobs report. In China, President Xi Jinping announced today the creation of the Beijing Stock Exchange that will focus on innovation-oriented SMEs;

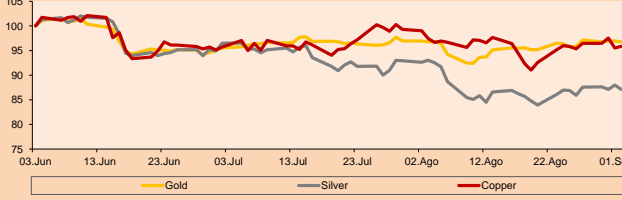
Currency table with columns: Currency, Price, 1D, 5D, 1M, YTD

Foreign Exchange Indices (3 months)



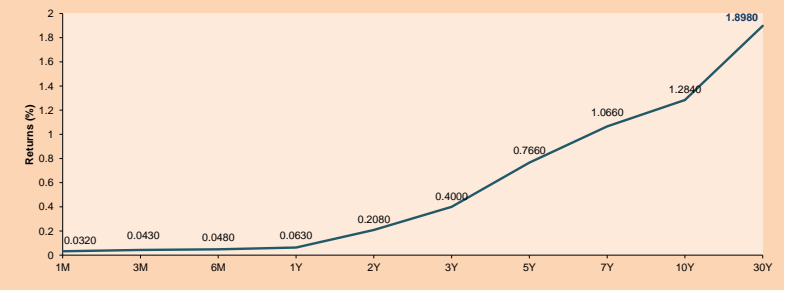
Commodities table with columns: Commodity Name, Close, 1D, 5D, 1M, YTD

Principal Metals Index (3 months)



ETFs table with columns: ETF Name, Curr., Close, 1D, 5D, 30 D, YTD, Exchange

USA Treasury Bonds Yield Curve (%)



Capital Market Laboratory Coordinator: Economist Bruno Bellido
Collaboration: Maria Camarena, Alonso Garcia, Adrian Paredes y Jairo Valverde
email: pulsohorsatil@ulima.edu.pe
facebook: www.facebook.com/pulsohorsatil

# LIMA

## Stocks

Ticker	Currency	Price	1D*	5D*	30D*	YTD*	Frequency	Volume (US\$)	Beta	Dividend Yield (%)	Price Earning	Market Cap. (M US\$)	Economic Sector*	Index Weight
▲ ALICORC1 PE**	S/.	5.07	0.27%	-0.15%	3.41%	-8.75%	100.00%	445,901	1.00	16.47	10.43	1,054.46	Industrial	3.53%
▲ ATACOCB1 PE**	S/.	0.10	2.11%	7.78%	6.59%	-29.71%	52.63%	2,674	1.09	0.00	-	22.35	Mining	1.02%
▲ BACKUS11 PE**	S/.	16.90	2.42%	3.62%	-6.11%	-16.13%	89.47%	6,914	0.71	5.53	8.11	5,671.12	Industrial	0.82%
▼ BAP PE**	US\$	104.15	-0.71%	1.35%	2.64%	-35.15%	100.00%	106,259	1.19	0.00	-	9,829.92	Diverse	5.82%
▼ BVN PE**	US\$	7.24	-3.21%	-0.55%	-15.22%	-39.67%	94.74%	54,088	1.11	0.00	-	1,992.17	Mining	5.88%
▼ CASAGRC1 PE**	S/.	5.10	-0.39%	8.51%	41.27%	7.37%	84.21%	16,774	1.29	14.66	4.65	104.74	Agricultural	1.31%
- BVVAC1 PE**	S/.	1.70	0.00%	3.66%	-1.73%	-18.89%	89.47%	9,873	1.16	2.57	17.32	2,801.33	Finance	2.85%
▲ CORAREI1 PE**	S/.	1.04	0.97%	7.22%	4.00%	16.85%	94.74%	131,625	1.26	22.96	2.06	317.24	Industrial	1.72%
▲ CPACASC1 PE**	S/.	4.45	0.45%	0.00%	-9.37%	-16.04%	94.74%	17,629	0.69	17.75	31.79	503.60	Industrial	2.38%
▲ CVERDEC1 PE**	US\$	16.10	0.63%	7.19%	8.42%	-23.04%	100.00%	77,812	1.40	3.55	7.20	5,635.90	Mining	5.25%
▼ ENGEPEC1 PE**	S/.	1.81	-7.42%	-7.42%	-24.77%	-23.63%	47.37%	425,580	0.67	18.38	7.97	1,057.20	Public Services	1.44%
- ENDISPC1**	S/.	3.20	0.00%	3.23%	-14.67%	-40.74%	57.89%	158	0.79	0.00	7.04	498.22	Public Services	0.98%
▼ FERREYC1 PE**	S/.	1.64	-4.65%	-0.61%	9.33%	-5.75%	100.00%	198,630	1.16	11.10	5.10	390.14	Diverse	4.90%
▼ AENZAC1 PE**	S/.	1.40	-1.41%	21.74%	-3.45%	-19.54%	94.74%	67,401	0.93	0.00	-	297.63	Diverse	4.05%
▼ IFS PE**	US\$	22.00	-1.79%	0.78%	10.33%	-28.89%	89.47%	78,888	1.25	3.50	6.22	2,539.85	Diverse	7.22%
▼ INRETC1 PE**	US\$	27.00	-1.82%	-6.90%	-21.40%	-31.12%	94.74%	3,264,154	0.84	2.52	45.38	2,775.80	Diverse	5.28%
▼ LUSURC1 PE**	S/.	10.55	-0.47%	0.48%	0.48%	-58.63%	73.68%	3,437	0.74	10.57	11.43	1,252.58	Public Services	1.81%
- MINSUR11 PE**	S/.	2.61	0.38%	13.48%	21.96%	41.08%	84.21%	29,271	0.99	12.80	3.17	1,834.65	Mining	3.09%
- PML PE**	US\$	0.09	0.00%	0.00%	-5.56%	-19.81%	31.58%	3,156	1.23	0.00	-	22.47	Mining	2.12%
- RELAPAC1 PE**	S/.	0.17	0.00%	0.00%	17.48%	143.48%	100.00%	27,104	1.02	0.00	3.01	340.77	Industrial	2.12%
- SCCO PE**	US\$	62.21	0.00%	1.78%	-4.07%	-5.60%	78.95%	250	0.81	0.00	16.43	48,093.39	Mining	2.14%
▼ SIDERC1 PE**	S/.	1.10	-1.79%	10.00%	-13.25%	2.04%	94.74%	5,388	0.90	45.13	2.87	187.74	Industrial	1.43%
▲ TV PE**	US\$	0.15	2.04%	8.70%	-14.29%	2.04%	68.42%	4,500	1.21	0.00	-	148.36	Mining	2.93%
- UNACEMC1 PE**	S/.	1.39	0.00%	13.01%	20.87%	-10.32%	100.00%	223,254	1.27	3.31	10.98	616.18	Industrial	3.00%
▲ VOLCABC1 PE**	S/.	0.50	2.04%	29.87%	25.00%	-3.85%	100.00%	3,197,713	1.76	0.00	-	496.97	Mining	5.90%
- NEXAPEC1 PE**	S/.	2.91	0.00%	15.02%	14.12%	2.83%	36.84%	11,828	1.14	0.00	7.93	944.48	Mining	1.56%

Quantity of shares: 26  
Source: Bloomberg, Económica  
\* Bloomberg Industry Classification System  
\*\* PER is used in the stock market and original currency of the instrument  
\*Legend: Variation 1D: 1 Day; 5D: 5 Days, 1M: 1 Month; YTD: Var.% 12/31/20 to date

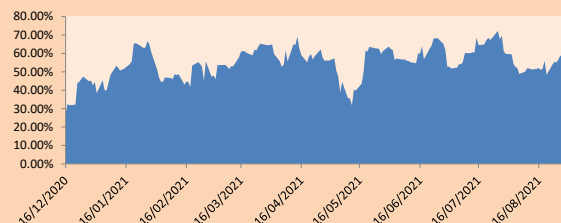
### Sectorial Indices

	Close	1D*	5D*	30D*	YTD*	Beta
▼ S&P/BVLMining	383.98	-0.16%	3.85%	-2.23%	-1.53%	0.79
▲ S&P/BVLConsumer	900.15	0.54%	1.72%	-8.68%	-17.31%	0.84
▼ S&P/BVLIndustrials	186.37	-1.54%	5.62%	5.09%	-2.20%	0.98
▼ S&P/BVLFinancials	774.34	-0.41%	2.09%	4.38%	-25.11%	1.13
▼ S&P/BVLConstruction	199.77	-0.17%	8.77%	3.15%	-4.47%	0.90
▲ S&P/BVLPublicSvcs	478.25	3.10%	4.61%	-6.44%	-22.12%	0.38
▲ S&P/BVLElectricUtil	466.89	3.10%	4.61%	-6.44%	-22.12%	0.38

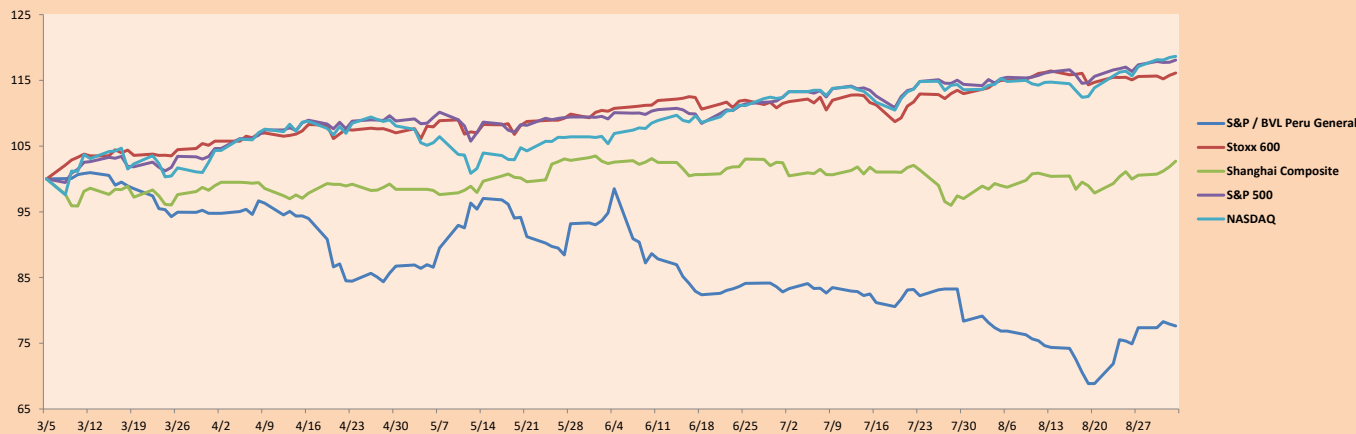
S&P/BVLConstructionTRPEN

\*Legend: Variation 1D: 1 Day; 5D: 5 Days, 1M: 1 Month; YTD: Var.% 12/31/20 to date

Correlation Graph of Returns of Mining Index against Metallic Index of London (3 months)



Indices (6 months)



Base: 05/03/21=100  
Source: Bloomberg

Capital Market Laboratory Coordinator: Economist Bruno Bellido  
Collaboration: María Camarena, Alonso García, Adrian Paredes y Jairo Valverde  
email: pulsobursatil@ulima.edu.pe  
facebook: www.facebook.com/pulsobursatil.ul

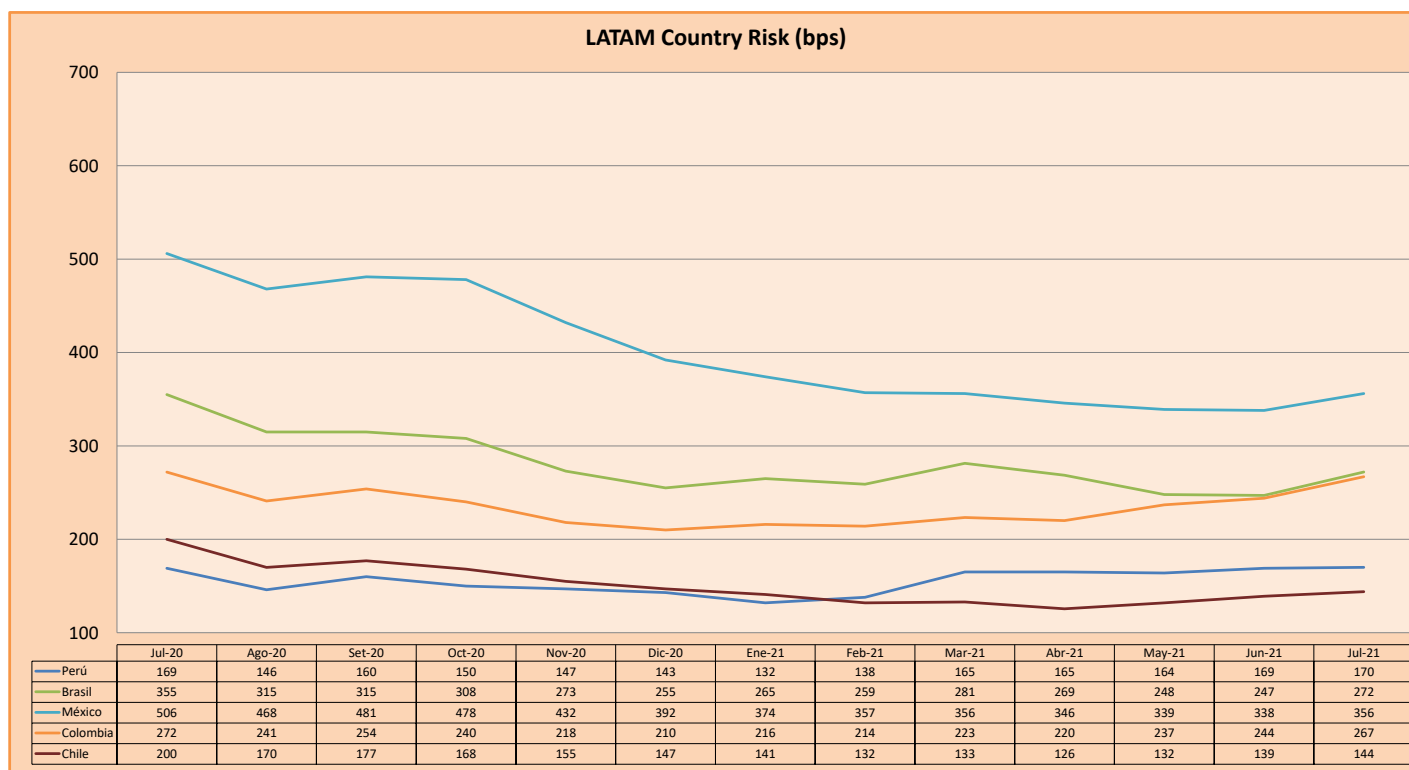
## SOVEREIGN RATING

RISK RATINGS			
Moody's	S&P	Fitch	
Aaa	AAA	AAA	Prime
Aa1	AA+	AA+	High credit quality
Aa2	AA	AA	
Aa3	AA-	AA-	
A1	A+	A+	Medium-high grade, with low credit risk
A2	A	A	
A3	A-	A-	
Baa1	BBB+	BBB+	Moderate Credit Risk
Baa2	BBB	BBB	
Baa3	BBB-	BBB-	
Ba1	BB+	BB+	It has speculative elements and it is subject to substantial credit risk
Ba2	BB	BB	
Ba3	BB-	BB-	
B1	B+	B+	It is considered speculative and it has high credit risk
B2	B	B	
B3	B-	B-	
Caa1	CCC+		Bad credit conditions and it is subject to high credit risk
Caa2	CCC		
Caa3	CCC-	CCC	
Ca	C		Very close to default or in default
		DDD	
C	D	DD D	

Source: Bloomberg

Latin America Credit Rating			
Clasificadora de riesgo			
Country	Moody's	Fitch	S&P
Peru	Baa1	BBB+	BBB+
México	Ba2	BB-	BB-
Venezuela	C	WD	SD
Brazil	Ba2	BB-	BB-
Colombia	Baa2	BB+	BB+
Chile	A1	A-	A
Argentina	Ca	WD	CCC+
Panama	Baa2	BBB-	BBB

Source: Bloomberg



Source: BCRP

Capital Market Laboratory Coordinator: Economist Bruno Bellido  
Collaboration: Maria Camarena, Alonso García, Adrian Paredes y Jairo Valverde  
email: [pulsobursatil@ulima.edu.pe](mailto:pulsobursatil@ulima.edu.pe)  
facebook: [www.facebook.com/pulsobursatil.ul](https://www.facebook.com/pulsobursatil.ul)