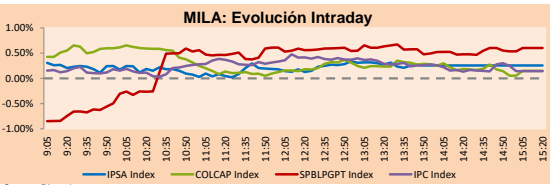


MILA

Lima, Sep 23, 2021

Main Indexes	Close	1 D	5 D	1 M	YTD	Cap. Burs. (US\$ bill)
▲ IPSA (Chile)	4,411.69	0.63%	-0.50%	0.97%	5.61%	109.92
▲ IGPA (Chile)	22,002.16	0.61%	-0.73%	0.77%	4.73%	131.45
▲ COLSC (Colombia)	964.73	0.39%	0.92%	-0.55%	-8.90%	4.57
▲ COLCAP (Colombia)	1,312.22	0.15%	-0.84%	-1.21%	-8.74%	76.33
▲ S&P/BVL (Perú)*	18,208.28	0.60%	1.81%	6.89%	-12.55%	83.22
▲ S&P/BVL SEL (Perú)	480.23	0.92%	1.73%	6.47%	-12.91%	75.39
▲ S&P/BVL LIMA 25	24,852.56	0.70%	1.90%	11.36%	-1.37%	82.21
▲ IPC (México)	51,464.27	0.25%	-1.39%	-1.00%	16.79%	318.71
▲ S&P MILA 40	461.84	0.62%	-1.06%	0.49%	-13.62%	6,389.57

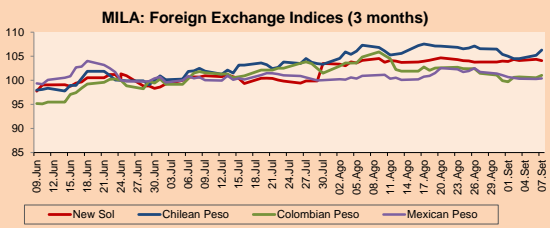
*Legend: Variation 1D: 1 day; 5D: 5 days; 1M: 1 Month; YTD: Var% 12/31/20 to date



Source: Bloomberg

Currency	Price	1D*	5D*	30 D*	YTD*
▼ Sol (PEN)	4,1061	-0.15%	0.05%	0.36%	13.49%
▼ Chilean Peso (CLP)	785.50	-0.30%	0.30%	0.36%	10.36%
▲ Colombian Peso (COP)	3,833.42	0.04%	0.43%	-0.86%	11.77%
▲ Mexican Peso (MXN)	20.05	-0.20%	0.54%	-0.78%	0.67%

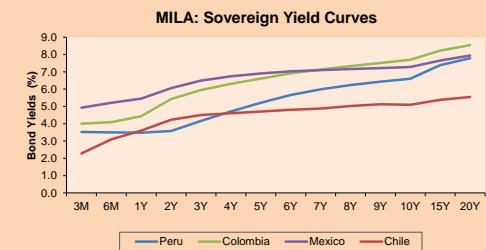
*Legend: Variation 1D: 1 day; 5D: 5 days; 1M: 1 Month; YTD: Var% 12/31/20 to date



Base: 24/06/21=100

Source: Bloomberg

Fixed Income	Currency	Price	Bid Yield (%)	Ask Yield (%)	Duration
PERU 7.35 07/21/25	USD	122.06	1.46	1.33	3.40
PERU 4.125 08/25/27	USD	112.173	1.98	1.89	5.33
PERU 8.75 11/21/33	USD	157.582	3.08	3.01	8.49
PERU 6.55 03/14/37	USD	138.566	3.37	3.31	10.34
PERU 5.625 11/18/2050	USD	140.744	3.43	3.39	16.61
CHILE 2.25 10/30/22	USD	102.083	0.56	0.12	1.08
CHILE 3.125 11/21/26	USD	107.722	1.34	1.23	4.07
CHILE 3.625 10/30/42	USD	107.431	3.16	3.12	15.09
COLOM 11.85 03/09/28	USD	155.703	2.62	2.30	5.03
COLOM 10.375 01/28/33	USD	147.636	4.94	4.78	7.57
COLOM 7.375 09/18/37	USD	126.964	4.95	4.88	10.27
COLOM 6.125 01/18/41	USD	114.266	5.00	4.94	11.89
MEX 4 10/02/23	USD	114.266	4.999	4.935	11.89
MEX5.55 01/45	USD	120.705	4.17	4.14	14.13



Source: Bloomberg

Equity

Largest gains	Exchange	Currency	Price	▲%
ENEL AMERICAS SA	Chile	CLP	103.90	3.69
CEMEX SAB-CPO	Mexico	MXN	15.11	2.86
AERO DEL SURES-B	Mexico	MXN	375.95	2.79
CONCHATORO	Chile	CLP	1290.00	2.46
BANCO DAVIVIENDA	Colombia	COP	31700.00	2.29

Per Turnover	Exchange	Amount (US\$)
WALMART DE MEXIC	Mexico	79,821,678
AMERICA MOVIL-L	Mexico	48,611,353
CEMEX SAB-CPO	Mexico	34,720,236
GRUPO F BANORT-O	Mexico	31,618,620
FOMENTO ECON-UBD	Mexico	21,431,714

Largest losses	Exchange	Currency	Price	▼%
BECLE SAB DE CV	Mexico	MXN	44.26	-2.64
CAP	Chile	CLP	8637.2	-2.40
BUENAVENTURA-ADF	Peru	USD	7.32	-2.27
KIMBERLY-CLA M-A	Mexico	MXN	33.99	-2.16
SURAMERICANA	Colombia	COP	20120	-2.04

Per Volume	Exchange	Volume
ITAU CORPBANCA	Chile	119,624,197
BANCO SANTANDER	Chile	85,762,331
AMERICA MOVIL-L	Mexico	53,519,321
CEMEX SAB-CPO	Mexico	46,219,020
ENEL AMERICAS SA	Chile	36,724,215

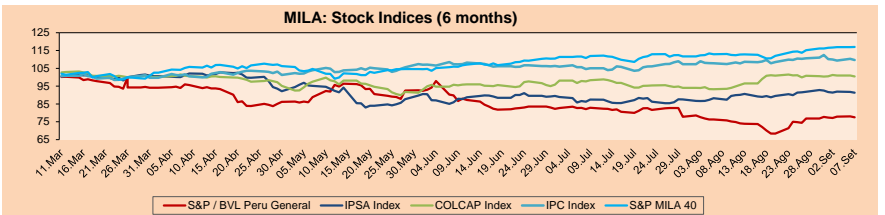
MILA

Peru: The General Index of the BVL ended today's session with a positive result of 0.60%. The index maintains an annual accumulated negative trend of -12.55% in local currency, while the adjusted yield in dollars amounts to -22.95%. Then, the S&P / BVL Peru SEL varied by + 0.92%, while the S&P / BVL LIMA 25 by + 0.70%. The PEN spot reached \$/ 4.1061. Head: Francke: MEF will work on the tax reform for mining with teams from the IMF and the World Bank.

Chile: The IPSA index ended the day with a positive return of + 0.63%. The sectors that benefited the most from the session were Public Services (+ 1.91%) and Energy (+1.16). The best performing stocks were Enel Americas SA (+ 3.69%) and Viña Concha y Toro SA (+ 2.46%). Owner: Banco Itau Chile sets its share price for a capital increase

Colombia: The COLCAP index ended the day with a positive return of + 0.15%. The sectors that benefited the most from the session were Public Services (+ 1.39%) and Energy (+ 0.78%). The best performing stocks were Compañía Colombiana de Inversiones (+ 2.63%) and Banco Davivienda SA (+ 2.29%). Headline: Quiet day for the dollar in Colombia.

Mexico: The IPC index closed the day with a positive return of + 0.25%. The sectors that benefited the most from the session were Non-Basic Consumer Products (+ 2.00%) and Materials (+ 1.46%). The best performing stocks were El Puerto de Liverpool SAB de CV (+ 3.86%) and Cemex SAB de CV (+ 2.86%). Headline: Inflation stands at 5.87% in the first half of September, its highest level in 3 months.

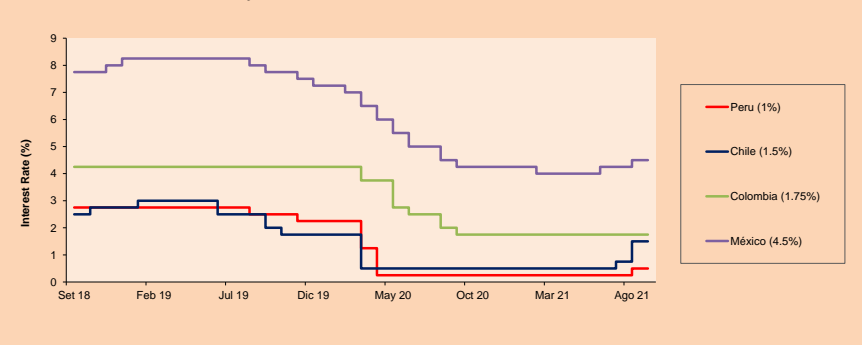


Base: 11/03/21=100

Source: Bloomberg

ETFs	Curr.	Close	1D	5D	30 D	YTD	Exchange
▲ iShares MSCI All Peru Caped Index Fund	USD	26.71	1.29%	-0.15%	2.73%	-22.98%	NYSE Arca
▲ iShares MSCI All Chile Caped Index Fund	USD	27.36	0.59%	-1.01%	-0.04%	-9.43%	Cboe BZX
▲ Global X MSCI Colombia	USD	10.04	0.50%	-0.74%	-1.08%	-11.62%	NYSE Arca
▲ iShares MSCI Mexico Capped	USD	49.78	0.42%	-2.05%	0.79%	15.79%	NYSE Arca
▲ iShares MSCI Emerging Markets	USD	51.39	0.78%	-0.39%	0.00%	-0.54%	NYSE Arca
▲ Vanguard FTSE Emerging Markets	USD	50.95	0.47%	-1.36%	-0.45%	1.68%	NYSE Arca
▲ iShares Core MSCI Emerging Markets	USD	63.01	0.74%	-0.36%	0.37%	1.56%	NYSE Arca
▲ iShares JP Morgan Emerging Markets Bonds	USD	63.44	0.33%	0.02%	1.05%	3.86%	Cboe BZX
▼ Morgan Stanley Emerging Markets Domestic	USD	6.07	-0.49%	-2.88%	-0.98%	-3.50%	New York

MILA: Policy Rate



Source: Bloomberg

Capital Market Laboratory Coordinator: Economist Bruno Bellido
Collaboration: María Camarena, Alonso García, Adrian Paredes y Jairo Valverde
email: pulsobursatil@ulima.edu.pe
facebook: www.facebook.com/pulsobursatil.ul

WORLD

Main Indices	Close	1 D*	5 D*	1 M*	YTD*	Market Cap. (US\$ Mill.)
▲ Dow Jones (USA)	34,764.82	1.48%	0.04%	-1.70%	13.59%	10,873,157
▲ Standard & Poor's 500 (EEUU)	4,448.98	1.21%	-0.55%	-0.83%	18.45%	39,388,963
▲ NASDAQ Composite (USA)	15,052.24	1.04%	-0.85%	0.22%	16.79%	25,458,212
▲ Stoxx EUROPE 600 (Europe)	467.50	0.93%	0.33%	-0.91%	17.16%	11,103,408
▲ DAX (Germany)	15,843.97	0.88%	-0.05%	-1.65%	14.03%	1,432,452
▼ FTSE 100 (United Kingdom)	7,078.35	-0.07%	0.72%	-0.67%	9.56%	1,462,562
▼ CAC 40 (France)	6,701.98	0.98%	1.20%	0.57%	20.73%	1,880,985
▲ IBEX 35 (Spain)	8,876.90	0.78%	1.64%	-0.80%	9.95%	506,034
▲ MSCI AC Asia Pacific Index	200.52	0.49%	-1.13%	1.41%	0.30%	26,102,465
▲ HANG SENG (Hong kong)	24,510.98	1.19%	-2.09%	-4.73%	-9.99%	3,751,196
▲ SHANGHAI SE Comp. (China)	3,642.22	0.38%	-0.56%	3.63%	4.87%	7,281,286
▼ NIKKEI 225 (Japan)	29,639.40	-0.67%	-3.36%	9.32%	10.12%	4,072,790
▲ S&P/ASX 200 (Australia)	7,370.22	1.00%	-1.21%	-1.76%	11.88%	1,733,596
▲ KOSPI (South Korea)	3,127.58	0.25%	-1.39%	0.02%	9.24%	1,865,722

*Legend: Variation 1D: 1 Day; 5D: 5 Days; 1M: 1 Month; YTD: Var. % 12/31/20 to date

Equity

Germany (Stocks from DAX Index)

Largest gains	Curr.	Price	▲ %	Exchange	Largest losses	Curr.	Price	▼ %	Exchange
CON GY	EUR	94.46	2.46	Xetra	FRE GY	EUR	41.315	-0.86	Xetra
ENR GY	EUR	24	2.26	Xetra	MUV2 GY	EUR	238	-0.21	Xetra
ADS GY	EUR	289.1	1.67	Xetra	BMW GY	EUR	81.35	-0.14	Xetra
DBK GY	EUR	10.656	1.58	Xetra	BAYN GY	EUR	46.51	-0.11	Xetra

Europe (Stocks from STOXX EUROPE 600)

Largest gains	Curr.	Price	▲ %	Exchange	Largest losses	Curr.	Price	▼ %	Exchange
EO FP	EUR	40.37	6.69	EN Paris	THG LN	Gbp	567	-3.57	Londres
SFOR LN	Gbp	870	5.84	Londres	POLY LN	Gbp	1302	-3.27	Londres
SCATC NO	NOK	179.35	4.82	Oslo	HSV LN	Gbp	953	-3.20	Londres
NEL NO	NOK	13.875	4.44	Oslo	IGG LN	Gbp	833	-2.52	Londres

Global Overview:

United States:

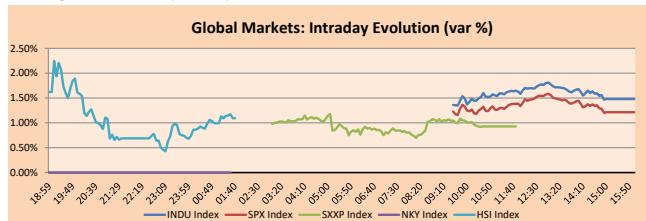
Major US indices closed the day with positive returns as the broader market continued to rebound from losses earlier this week, supported by energy and finance. The positive reaction in the markets suggests that investors are more comfortable with the possibility of the Fed cutting back on bond purchases. In turn, investor concerns diminish over a China-led blow to the global economy from the possible collapse of Evergrande. The DOW JONES index +1.48% closed with 27 of its 30 values on the rise and the sectors with the best performance of the day were Information Technology + 2.56%, Energy + 2.48% and Finance + 2.22%. Meanwhile, the S&P 500 + 1.21% index closed with positive returns thanks to a buying rally. The best performing sectors were Energy + 3.41%, Finance + 2.50% and Industrial + 1.55%. Lastly, the NASDAQ + 1.04% closed with gains and the best performing stocks of the day were Motus GI Holdings + 73.44% and Regenix Inc. 53.44%. Thus, DOW JONES + 1.48%; S&P 500 + 1.21%; NASDAQ +1.04 ended the day with positive results.

Europe:

The major indices on the European continent ended the session higher, after concerns about cash-strapped developer Evergrande eased. However, comments from the Bank of England kept the stock under pressure. In this way, the pan-European STOXX 600 index ended higher, thanks to the increase of the banking sector + 2.2% to lead the gains. By contrast, the UK's FTSE100 ended slightly lower, after the Bank of England said it believes prices will moderate next year and that a rate hike will not curb price increases. On the other hand, the DAX in Germany ended higher, driven by all sectors except Staples -0.05%. In addition, the CAC40 for France ended higher, thanks to the gains in the financial sector due to the recovery of Evergrande + 1.62%. Lastly, in relation to the shares, French vaccine manufacturer Valneva rose 5.7%, after it said it was still in conversation with the European Commission about the launch of a vaccine. On the other hand, the auto parts company Faurecia grew 6.7%, after exceeding its financial targets for this year. Thus, FTSE 100 -0.07%; CAC 40 + 0.98%; DAX + 0.88%; STOXX 600 + 0.93% ended the day higher.

Asia:

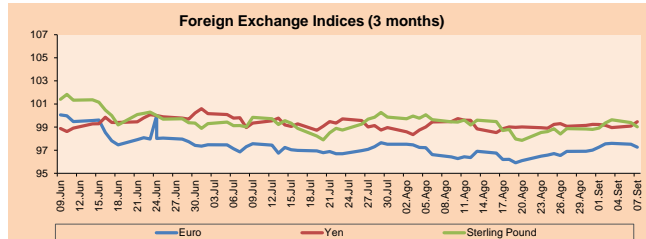
The main Asian indices closed the day with positive returns, boosted by the growth of optimism coming from Wall Street. In China, stocks posted gains, driven by semiconductor and consumer staples producers. To a large extent, the momentum in Asian markets was influenced by assurances from developer Evergrande Group, which said it held a meeting urging company executives to guarantee the delivery of properties and the redemption of wealth management products. In Hong Kong, stocks closed higher, with real estate shares rebounding after resuming trading following yesterday's holiday. In Japan, markets remained closed for a national holiday. In South Korea, stocks closed the day slightly lower as investors did not receive the Fed's tapering of stimulus any better. Notable stocks included tech giants Samsung Electronics +0.26% and LG Chem +1.40%, with positive results. In Australia, stocks posted a seven-week high, led by technology and energy stocks. Thus HANG SENG +1.20%; CSI 300 +0.65%; S&P/ASX 200 +1.00%; SHANGHAI COMPOSITE +0.38%; KOSPI -0.41% and NIFTY 50 +1.57% ended the day higher.



Source: Bloomberg

Currency	Price	1 D*	5 D*	1 M*	YTD*
▲ Euro	1.1739	0.44%	-0.24%	-0.14%	-3.90%
▲ Yen	110.3300	0.50%	0.55%	0.62%	6.86%
▲ Sterling Pound	1.3720	0.72%	-0.54%	-0.07%	0.37%
▼ Yuan	6.4589	-0.05%	0.02%	-0.19%	-1.05%
▼ Hong Kong Dollar	7.7844	-0.03%	0.02%	-0.04%	0.40%
▲ Brazilian Real	5.3038	0.27%	0.90%	1.07%	2.03%
▲ Argentine Peso	98.5365	0.05%	0.23%	1.13%	17.10%

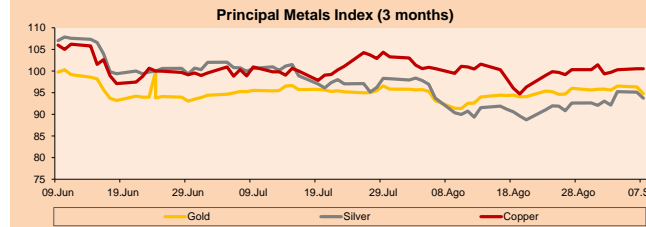
*Legend: Variation 1D: 1 Day; 5D: 5 Days; 1M: 1 Month; YTD: Var. % 12/31/20 to date



Base: 24/06/21=100
Source: Bloomberg

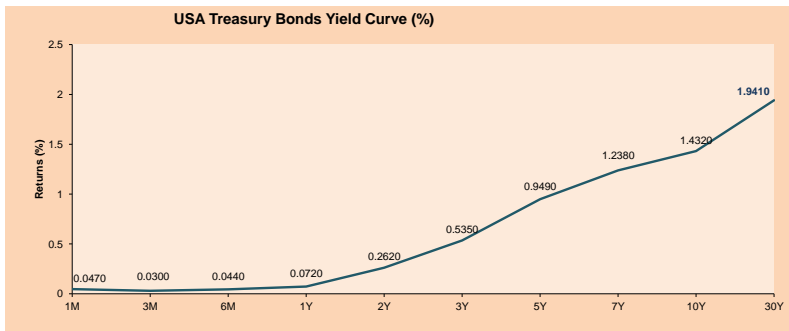
Commodities	Close	1 D*	5 D*	1 M*	YTD*
▼ Oro (US\$ Oz. T) (LME)	1,742.76	-1.44%	-0.63%	-3.34%	-8.20%
▼ Plata (US\$ Oz. T) (LME)	22.51	-0.81%	-1.72%	-5.65%	-14.73%
▼ Cobre (US\$ TM) (LME)	9,284.45	-0.19%	-0.69%	-1.00%	19.81%
▲ Zinc (US\$ TM) (LME)	3,087.25	2.60%	0.58%	2.62%	13.11%
▲ Petróleo WTI (US\$ Barril) (NYM)	73.30	1.48%	1.29%	9.00%	53.19%
▲ Estano (US\$ TM) (LME)	36,704.99	1.03%	5.41%	10.21%	78.66%
▲ Plomo (US\$ TM) (LME)	2,131.50	0.32%	-3.23%	-13.09%	7.88%
▲ Azúcar #11 (US\$ Libra) (NYB-ICE)	20.29	1.10%	0.79%	-0.10%	42.19%
▼ Cacao (US\$ TM) (NYB-ICE)	2,612.00	-1.51%	-1.69%	1.63%	4.40%
▲ Café Arábica (US\$ TM) (NYB-ICE)	190.60	3.11%	1.30%	2.61%	41.39%

*Leyenda: Variación 1D: 1 Día; 5D: 5 Días; 1M: 1 Mes; YTD: Var. % 31/12/20 a la fecha



Base: 24/06/21=100
Source: Bloomberg

ETFs	Curr.	Close	1D	5D	30 D	YTD	Exchange
SPDR S&P 500 ETF TRUST	USD	443.18	1.22%	-0.89%	-1.07%	18.54%	NYSE Arca
ISHARES MSCI EMERGING MARKET	USD	51.39	0.78%	-0.39%	0.00%	-0.54%	NYSE Arca
ISHARES IBOXX HIGH YLD CORP	USD	88.04	0.05%	-0.08%	0.41%	0.85%	NYSE Arca
FINANCIAL SELECT SECTOR SPDR	USD	38.02	2.45%	0.72%	-0.55%	26.97%	NYSE Arca
VANEK GOLD MINERS ETF	USD	29.89	-2.00%	-3.33%	-0.91%	-17.02%	NYSE Arca
ISHARES RUSSELL 2000 ETF	USD	224.81	1.77%	1.18%	1.37%	14.65%	NYSE Arca
SPDR GOLD SHARES	USD	163.51	-1.15%	-0.32%	-3.05%	-8.33%	NYSE Arca
ISHARES 20+ YEAR TREASURY BO	USD	148.36	-2.26%	-1.02%	-0.62%	-5.94%	NASDAQ GM
INVESCO QQQ TRUST SERIES 1	USD	372.98	0.92%	-1.41%	-0.37%	18.88%	NASDAQ GM
ISHARES BIOTECHNOLOGY ETF	USD	173.92	1.35%	0.82%	1.44%	14.81%	NASDAQ GM
ENERGY SELECT SECTOR SPDR	USD	50.52	3.50%	1.67%	4.38%	33.30%	NYSE Arca
PROSHARES ULTRA VIX ST FUTUR	USD	21.48	-0.23%	0.47%	-8.60%	-79.83%	Close BZX
UNITED STATES OIL FUND LP	USD	51.38	1.78%	1.34%	8.47%	55.65%	NYSE Arca
ISHARES MSCI BRAZIL ETF	USD	33.91	1.38%	-0.96%	-6.56%	-8.52%	NYSE Arca
SPDR S&P OIL & GAS EXP & PR	USD	91.54	4.35%	3.13%	15.62%	56.48%	NYSE Arca
UTILITIES SELECT SECTOR SPDR	USD	65.21	-0.53%	-3.31%	-4.91%	4.00%	NYSE Arca
ISHARES US REAL ESTATE ETF	USD	106.90	-0.34%	-0.84%	0.58%	24.81%	NYSE Arca
SPDR S&P BIOTECH ETF	USD	133.07	1.88%	1.58%	4.16%	-5.48%	NYSE Arca
ISHARES IBOXX INVESTMENT GRA	USD	135.21	-0.69%	-0.33%	0.14%	-2.11%	NYSE Arca
ISHARES JP MORGAN USD EMERGI	USD	111.40	-0.77%	-1.30%	-1.06%	-3.89%	NASDAQ GM
REAL ESTATE SELECT SECT SPDR	USD	46.44	-0.49%	-1.78%	-0.06%	27.02%	NYSE Arca
ISHARES CHINA LARGE-CAP ETF	USD	39.06	-0.84%	-1.54%	-4.26%	-15.87%	NYSE Arca
CONSUMER STAPLES SPDR	USD	70.59	0.37%	-1.62%	-1.93%	4.66%	NYSE Arca
VANEK JUNIOR GOLD MINERS	USD	39.17	-2.12%	-4.07%	-7.00%	-27.78%	NYSE Arca
SPDR BBG BARC HIGH YIELD BND	USD	109.96	0.02%	-0.10%	0.44%	0.94%	NYSE Arca
VANGUARD REAL ESTATE ETF	USD	106.62	-0.20%	-0.69%	0.66%	25.54%	NYSE Arca
GRAYSCALE BITCOIN TRUST BTC	USD	35.89	2.90%	-5.55%	-8.19%	12.16%	OTC US



Source: Bloomberg

Capital Market Laboratory Coordinator: Economist Bruno Bellido
Collaboration: María Camarena, Alonso García, Adrian Paredes y Jairo Valverde
email: pulsohorsatil@ulima.edu.pe
facebook: www.facebook.com/pulsohorsatil.ull

LIMA

Stocks

Ticker	Currency	Price	1D*	5D*	30D*	YTD*	Frequency	Volume (US\$)	Beta	Dividend Yield (%)	Price Earning	Market Cap. (M US\$)	Economic Sector*	Index Weight
▲ ALICORC1 PE**	S/.	5.10	0.39%	0.92%	-0.55%	-8.90%	100.00%	311,898	1.01	16.37	10.49	1,059.64	Industrial	3.53%
▲ ATACOCB1 PE**	S/.	0.12	0.00%	0.00%	34.83%	-13.04%	52.63%	15,486	1.10	0.00	-	27.61	Mining	1.02%
- BACKUSI1 PE**	S/.	17.46	0.00%	-0.23%	7.05%	-13.35%	78.95%	2,126	0.71	5.35	8.38	5,695.65	Industrial	0.82%
▲ BAP PE**	US\$	108.02	1.43%	2.45%	4.59%	-32.74%	100.00%	244,844	1.19	1.13	-	10,195.18	Diverse	5.82%
▼ BVN PE**	US\$	7.32	-2.27%	4.57%	1.67%	-39.00%	100.00%	116,878	1.10	0.00	-	2,014.18	Mining	5.88%
▲ CASAGRC1 PE**	S/.	5.40	0.75%	1.89%	20.00%	13.68%	89.47%	13,658	1.27	13.85	4.92	110.78	Agricultural	1.31%
▲ BBVAC1 PE**	S/.	1.72	1.78%	1.18%	4.88%	-17.94%	84.21%	23,338	1.15	2.54	17.53	2,831.05	Finance	2.85%
- CORAREH1 PE**	S/.	1.09	0.00%	-5.22%	9.00%	22.47%	100.00%	32,053	1.23	25.28	2.16	344.33	Industrial	1.72%
- CPACASC1 PE**	S/.	4.59	0.00%	-0.22%	-0.22%	-13.40%	94.74%	70,898	0.70	17.21	32.79	518.85	Industrial	2.38%
▼ CVERDEC1 PE**	US\$	17.55	-2.50%	1.74%	11.43%	-16.11%	100.00%	285,894	1.40	3.26	7.85	6,143.48	Mining	5.25%
- ENGEPEC1 PE**	S/.	1.86	0.00%	0.54%	-4.86%	-21.52%	47.37%	33,828	0.68	17.89	8.19	1,085.16	Public Services	1.44%
- ENDISPC1**	S/.	4.30	0.00%	0.00%	38.71%	-20.37%	47.37%	4,637	0.80	0.00	9.46	668.72	Public Services	0.98%
- FERREYC1 PE**	S/.	1.67	0.00%	-1.76%	2.45%	-4.02%	100.00%	167,128	1.16	10.90	5.19	396.82	Diverse	4.90%
▲ AENZAC1 PE**	S/.	1.39	0.72%	-2.11%	18.80%	-20.11%	84.21%	7,679	0.94	0.00	-	295.16	Diverse	4.05%
▲ IFS PE**	US\$	22.30	3.29%	0.45%	2.91%	-27.93%	89.47%	101,895	1.27	3.45	6.32	2,574.48	Diverse	7.22%
▲ INRETC1 PE**	US\$	32.65	1.56%	1.71%	12.59%	-16.71%	89.47%	6,149,104	0.88	2.09	54.99	3,356.66	Diverse	5.28%
▼ LUSURC1 PE**	S/.	11.73	-2.25%	-0.42%	11.71%	-54.00%	63.16%	3,920	0.74	8.86	12.71	1,391.09	Public Services	1.81%
▲ MINSUR1 PE**	S/.	2.65	1.92%	1.92%	17.78%	43.24%	89.47%	72,397	0.99	12.61	3.21	1,860.64	Mining	3.09%
▲ PML PE**	US\$	0.10	2.00%	-7.27%	14.61%	-3.77%	31.58%	1,584	1.22	0.00	-	26.97	Mining	2.12%
▼ RELAPAC1 PE**	S/.	0.17	-1.14%	0.00%	2.98%	150.72%	100.00%	114,526	0.99	0.00	3.10	350.51	Industrial	2.12%
▲ SCCO PE**	US\$	57.30	0.81%	-3.70%	-9.48%	-13.05%	73.68%	3,489,434	0.78	4.71	15.13	44,297.56	Mining	2.14%
- SIDERC1 PE**	S/.	1.17	0.00%	6.36%	10.38%	8.53%	94.74%	26,444	0.90	42.43	3.06	199.46	Industrial	1.43%
▲ TV PE**	US\$	0.15	7.35%	-0.68%	4.29%	-0.68%	73.68%	58,127	1.20	0.00	-	144.41	Mining	2.93%
- UNACEMC1 PE**	S/.	1.46	0.00%	0.69%	18.70%	-5.81%	100.00%	81,329	1.26	3.15	11.53	646.47	Industrial	3.00%
▲ VOLCABC1 PE**	S/.	0.63	1.61%	8.62%	63.64%	21.15%	100.00%	203,479	1.80	0.00	-	625.47	Mining	5.90%
▼ NEXAPEC1 PE**	S/.	2.90	-3.33%	-3.33%	17.41%	2.47%	36.84%	42,341	1.15	0.00	7.89	931.45	Mining	1.56%

Quantity of shares: 26
 Source: Bloomberg, Economática
 * Bloomberg Industry Classification System
 ** PER is used in the stock market and original currency of the instrument
 *Legend: Variation 1D: 1 Day; 5D: 5 Days, 1M: 1 Month; YTD: Var.% 12/31/20 to date

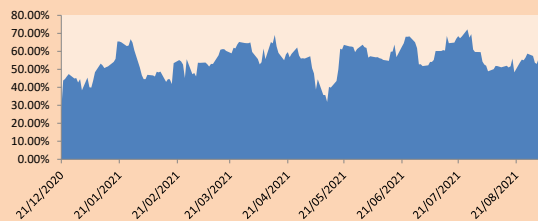
Sectorial Indices

	Close	1D*	5D*	30D*	YTD*	Beta
▲ S&P/BVLMining	371.21	0.03%	-0.90%	-2.23%	-4.81%	0.79
▲ S&P/BVLConsumer	995.84	1.27%	2.88%	11.15%	-8.52%	0.84
▲ S&P/BVLIndustrials	193.90	0.07%	0.18%	9.18%	1.75%	0.98
▲ S&P/BVLFinancials	809.01	1.50%	2.26%	5.73%	-21.75%	1.12
▲ S&P/BVLConstruction	209.90	0.13%	1.05%	12.54%	0.37%	0.90
▲ S&P/BVLPublicSvcs	511.17	0.94%	1.12%	14.91%	-16.76%	0.39
▲ S&P/BVLElectricUtil	499.03	0.94%	1.12%	14.92%	-16.76%	0.39

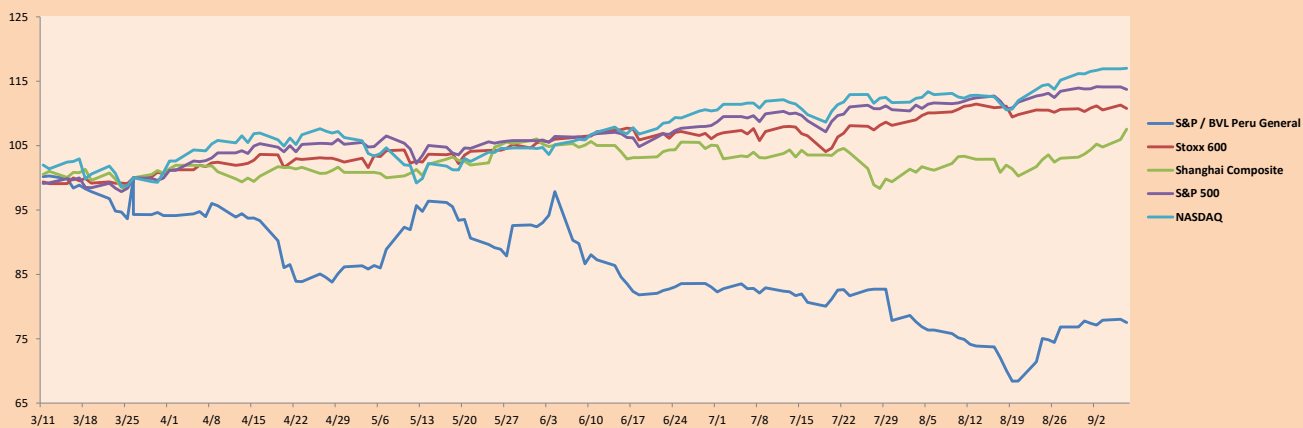
S&P/BVLConstructionTRPEN

*Legend: Variation 1D: 1 Day; 5D: 5 Days, 1M: 1 Month; YTD: Var.% 12/31/20 to date

Correlation Graph of Returns of Mining Index against Metallic Index of London (3 months)



Indices (6 months)



Base: 26/03/21=100
 Source: Bloomberg

Capital Market Laboratory Coordinator: Economist Bruno Bellido
 Collaboration: Maria Camarena, Alonso Garcia, Adrian Paredes y Jairo Valverde
 email: pulsobursatil@ulima.edu.pe
 facebook: www.facebook.com/pulsobursatil.ul

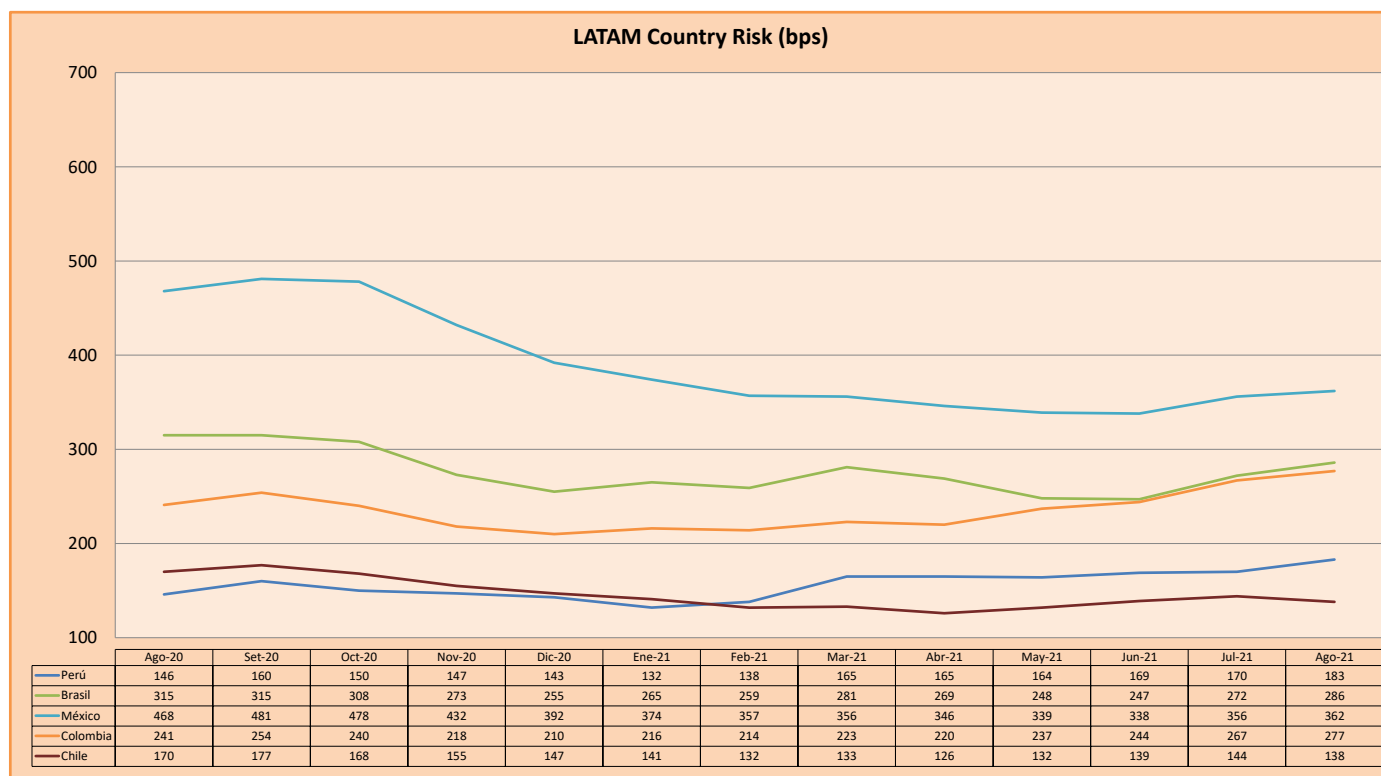
SOVEREIGN RATING

RISK RATINGS			
Moody's	S&P	Fitch	
Aaa	AAA	AAA	Prime
Aa1	AA+	AA+	High credit quality
Aa2	AA	AA	
Aa3	AA-	AA-	
A1	A+	A+	Medium-high grade, with low credit risk
A2	A	A	
A3	A-	A-	
Baa1	BBB+	BBB+	Moderate Credit Risk
Baa2	BBB	BBB	
Baa3	BBB-	BBB-	
Ba1	BB+	BB+	It has speculative elements and it is subject to substantial credit risk
Ba2	BB	BB	
Ba3	BB-	BB-	
B1	B+	B+	It is considered speculative and it has high credit risk
B2	B	B	
B3	B-	B-	
Caa1	CCC+	CCC	Bad credit conditions and it is subject to high credit risk
Caa2	CCC		
Caa3	CCC-		
Ca	CC	DDD	Very close to default or in default
C	C		
	D		

Source: Bloomberg

Latin America Credit Rating			
Clasificadora de riesgo			
Country	Moody's	Fitch	S&P
Peru	Baa1	BBB+	BBB+
México	Ba2	BB-	BB-
Venezuela	C	WD	NR
Brazil	Ba2	BB-	BB-
Colombia	Baa2	BB+	BB+
Chile	A1	A-	A
Argentina	Ca	WD	CCC+
Panama	Baa2	BBB-	BBB

Source: Bloomberg



Source: BCRP

Capital Market Laboratory Coordinator: Economist Bruno Bellido
Collaboration: Maria Camarena, Alonso García, Adrian Paredes y Jairo Valverde
email: pulsobursatil@ulima.edu.pe
facebook: www.facebook.com/pulsobursatil.ul