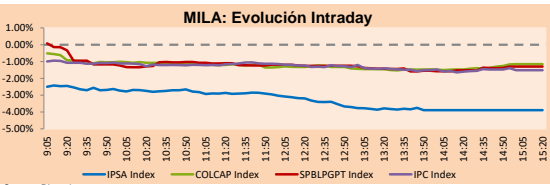


MILA

Lima, Sep 20, 2021

| Main Indexes | Close | 1 D | 5 D | 1 M | YTD | Cap. Burs. (US\$ bill) |
|----------------------|-----------|--------|--------|--------|---------|------------------------|
| ▼ IPSA (Chile) | 4,291.36 | -3.90% | -3.87% | -0.68% | 2.73% | 111.37 |
| ▼ IGPA (Chile) | 21,424.18 | -3.84% | -3.88% | -0.84% | 1.98% | 127.87 |
| ▼ COLSC (Colombia) | 963.36 | -0.13% | 0.14% | -0.84% | -9.03% | 4.52 |
| ▼ COLCAP (Colombia) | 1,306.62 | -1.15% | -0.44% | -1.53% | -9.13% | 75.36 |
| ▼ S&P/BVL (Perú)* | 17,747.01 | -1.29% | -1.75% | 14.26% | -14.77% | 81.54 |
| ▼ S&P/BVL SEL (Perú) | 467.31 | -1.68% | -1.92% | 14.55% | -15.25% | 74.26 |
| ▼ S&P/BVL LIMA 25 | 24,225.15 | -1.09% | -1.14% | 20.98% | -3.86% | 80.53 |
| ▼ IPC (México) | 50,557.65 | -1.46% | -1.87% | -1.67% | 14.73% | 314.84 |
| ▼ S&P MILA 40 | 451.47 | -3.00% | -2.82% | -0.48% | -15.55% | 6,340.97 |

*Legend: Variation 1D: 1 day; 5D: 5 days; 1M: 1 Month; YTD: Var% 12/31/20 to date

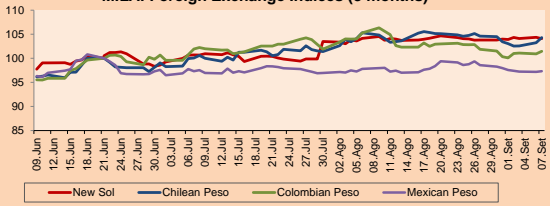


Source: Bloomberg

| Currency | Price | 1D* | 5D* | 30 D* | YTD* |
|------------------------|----------|-------|-------|--------|--------|
| ▲ Sol (PEN) | 4,1185 | 0.19% | 0.30% | 0.09% | 13.83% |
| ▲ Chilean Peso (CLP) | 788.40 | 0.67% | 0.42% | 0.21% | 10.76% |
| ▲ Colombian Peso (COP) | 3,842.80 | 0.33% | 0.24% | -0.76% | 12.04% |
| ▲ Mexican Peso (MXN) | 20.14 | 0.61% | 1.35% | -1.10% | 1.14% |

*Legend: Variation 1D: 1 day; 5D: 5 days; 1M: 1 Month; YTD: Var% 12/31/20 to date

MILA: Foreign Exchange Indices (3 months)

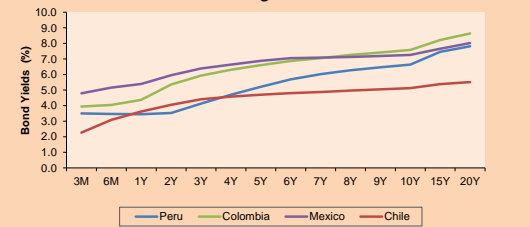


Base: 21/06/21=100

Source: Bloomberg

| Fixed Income | Currency | Price | Bid Yield (%) | Ask Yield (%) | Duration |
|-----------------------|----------|---------|---------------|---------------|----------|
| PERU 7.35 07/21/25 | USD | 122.189 | 1.45 | 1.31 | 3.41 |
| PERU 4.125 08/25/27 | USD | 112.577 | 1.93 | 1.82 | 5.34 |
| PERU 8.75 11/21/33 | USD | 158.102 | 3.05 | 2.97 | 8.50 |
| PERU 6.55 03/14/37 | USD | 139.232 | 3.32 | 3.27 | 10.35 |
| PERU 5.625 11/18/2050 | USD | 140.874 | 3.42 | 3.38 | 16.60 |
| CHILE 2.25 10/30/22 | USD | 102.065 | 0.58 | 0.17 | 1.09 |
| CHILE 3.125 01/21/26 | USD | 107.645 | 1.36 | 1.25 | 4.08 |
| CHILE 3.625 10/30/42 | USD | 107.778 | 3.14 | 3.10 | 15.11 |
| COLOM 11.85 03/09/28 | USD | 156.617 | 2.56 | 2.16 | 5.04 |
| COLOM 10.375 01/28/33 | USD | 148.653 | 4.86 | 4.69 | 7.58 |
| COLOM 7.375 09/18/37 | USD | 127.773 | 4.89 | 4.83 | 10.31 |
| COLOM 6.125 01/18/41 | USD | 115.137 | 4.93 | 4.87 | 11.94 |
| MEX 4 10/02/23 | USD | 115.137 | 4.933 | 4.873 | 11.94 |
| MEX5.55 01/45 | USD | 121.556 | 4.13 | 4.09 | 14.16 |

MILA: Sovereign Yield Curves



Source: Bloomberg

Equity

| Largest gains | Exchange | Currency | Price | ▲% |
|------------------|----------|----------|--------|------|
| BUENAVENTURA-ADR | Peru | USD | 7.19 | 3.01 |
| GRUPO BIMBO-A | Mexico | MXN | 57.91 | 2.99 |
| BECLE SAB DE CV | Mexico | MXN | 45.44 | 1.66 |
| FERREYCORP SAA | Peru | PEN | 1.67 | 1.21 |
| GRUMA SAB-B | Mexico | MXN | 239.42 | 0.87 |

| Per Turnover | Exchange | Amount (US\$) |
|------------------|----------|---------------|
| CEMEX SAB-CPO | Mexico | 44,028,326 |
| WALMART DE MEXIC | Mexico | 37,894,710 |
| SOQUIMICH-B | Chile | 29,647,641 |
| AMERICA MOVIL-L | Mexico | 28,749,018 |
| GRUPO F BANORT-O | Mexico | 23,855,709 |

| Largest losses | Exchange | Currency | Price | ▼% |
|----------------|----------|----------|--------|--------|
| CAP | Chile | CLP | 8000 | -10.11 |
| EMPRESAS COPEC | Chile | CLP | 6850 | -6.16 |
| CERVEZAS | Chile | CLP | 6920 | -6.08 |
| SOQUIMICH-B | Chile | CLP | 41550 | -6.06 |
| ENEL CHILE SA | Chile | CLP | 1597.5 | -6.03 |

| Per Volume | Exchange | Volume |
|-----------------|----------|-------------|
| ITAU CORPBANCA | Chile | 885,760,821 |
| BANCO DE CHILE | Chile | 193,798,824 |
| BANCO SANTANDER | Chile | 103,123,891 |
| CEMEX SAB-CPO | Mexico | 62,947,199 |
| ENEL CHILE SA | Chile | 51,455,578 |

MILA

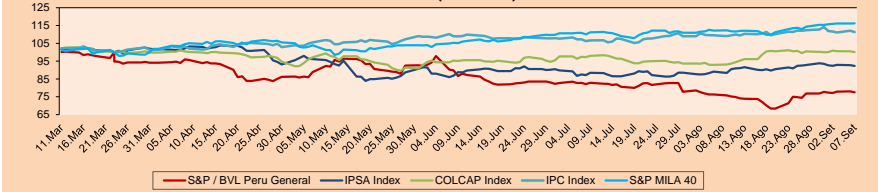
Peru: The General Index of the BVL ended today's session with a negative result of 1.29%. The index maintains an annual accumulated negative trend of -14.77% in local currency, while the adjusted yield in dollars amounts to -25.13%. Then, the S&P / BVL Peru SEL varied by -1.68% while the S&P / BVL LIMA 25 by -1.09%. The PEN spot reached S / 4.1185. Headline: Dollar reached its historical level and closed S / 4,119, despite the intervention of the BCR

Chile: The IPSA index ended the day with a negative return of -3.90%. The least benefited sectors of the day were Industrial (-7.74%) and Materials (-6.37%). The worst performing stocks were CAP SA (-10.51%) and Compañía Sud Americana de Vapor (-7.74%). Headline: Faced with the shaking of the world's stock markets due to the Evergrande effect, IPSA had its worst day since May

Colombia: The COLCAP index ended the day with a negative return of -1.15%. The sectors that benefited the least from the session were Energy (1.78%) and Basic Products (-1.53%). The worst performing stocks were Promigas SA (-3.07%) and Compañía Colombiana de Inversiones (-2.58%). Headline: Evergrande Crisis Punishes Global Stock Exchanges

Mexico: The IPC index closed the day with a negative return of -1.87%. The sectors that benefited the least from the session were Materials (-3.23%) and Real Estate (-2.96%). The worst performing stocks were Mexichem SAB de CV (-4.86%) and Grupo México SAB de CV (-3.53%). Headline: LP gas price control effect is 'turned off' and propane is the culprit

MILA: Stock Indices (6 months)



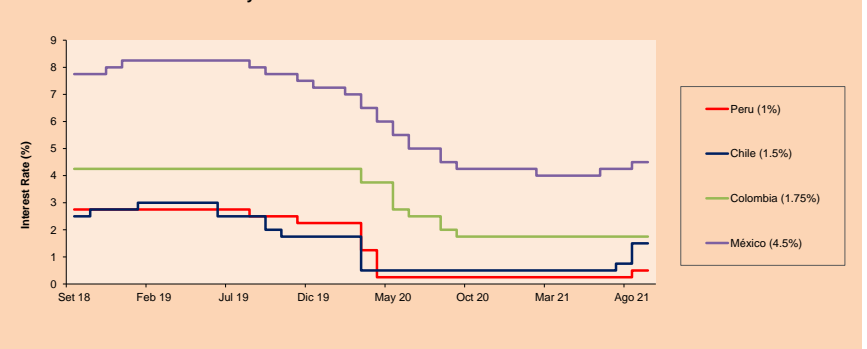
Base: 11/03/21=100

Source: Bloomberg

ETFs

| ETFs | Curr. | Close | 1D | 5D | 30 D | YTD | Exchange |
|--|-------|--------|--------|--------|--------|---------|-----------|
| ▼ iShares MSCI All Peru Caped Index Fund | USD | 26.27 | -1.98% | -3.31% | 8.73% | -24.25% | NYSE Arca |
| ▼ iShares MSCI All Chile Caped Index Fund | USD | 26.55 | -2.64% | -3.35% | -1.92% | -12.12% | Cboe BZX |
| ▼ Global X MSCI Colombia | USD | 9.8654 | -1.74% | -1.69% | -1.44% | -13.16% | NYSE Arca |
| ▼ iShares MSCI Mexico Capped | USD | 48.79 | -1.83% | -2.75% | 0.49% | 13.49% | NYSE Arca |
| ▼ iShares MSCI Emerging Markets | USD | 49.99 | -2.69% | -5.02% | 0.99% | -3.25% | NYSE Arca |
| ▼ Vanguard FTSE Emerging Markets | USD | 49.59 | -3.62% | -5.90% | 0.49% | -1.04% | NYSE Arca |
| ▼ iShares Core MSCI Emerging Markets | USD | 61.33 | -2.60% | -4.75% | 1.29% | -1.14% | NYSE Arca |
| ▼ iShares JP Morgan Emerging Markets Bonds | USD | 62.42 | -1.31% | -2.62% | 1.30% | 2.19% | Cboe BZX |
| ▼ Morgan Stanley Emerging Markets Domestic | USD | 6.02 | -1.79% | -4.44% | -0.66% | -4.29% | New York |

MILA: Policy Rate



Source: Bloomberg

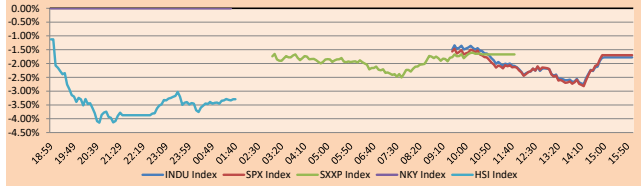
Capital Market Laboratory Coordinator: Economist Bruno Bellido
Collaboration: María Camarena, Alonso García, Adrian Paredes y Jairo Valverde
email: pulso_bursatil@ulima.edu.pe
facebook: www.facebook.com/pulso_bursatil.ul

WORLD

| Main Indices | Close | 1 D* | 5 D* | 1 M* | YTD* | Market Cap. (US\$ Mill.) |
|--------------------------------|-----------|--------|--------|--------|---------|--------------------------|
| ▼ Dow Jones (USA) | 33,970.47 | -1.78% | -2.58% | -3.27% | 10.99% | 10,832,370 |
| ▼ Standard & Poor's 500 (EEUU) | 4,357.73 | -1.70% | -2.48% | -1.89% | 16.02% | 39,185,744 |
| ▼ NASDAQ Composite (USA) | 14,713.90 | -2.19% | -2.59% | -0.01% | 14.16% | 25,424,365 |
| ▼ Stoxx EUROPE 600 (Europe) | 454.12 | -1.67% | -2.90% | -3.13% | 13.81% | 10,773,254 |
| ▼ DAX (Germany) | 15,132.06 | -2.31% | -3.63% | -4.28% | 10.30% | 1,387,111 |
| ▼ FT SE 100 (United Kingdom) | 6,903.91 | -0.86% | -2.33% | -2.60% | 6.86% | 1,462,794 |
| ▼ CAC 40 (France) | 6,455.81 | -1.74% | -3.31% | -2.57% | 16.29% | 1,894,598 |
| ▼ IBEX 35 (Spain) | 8,655.40 | -1.20% | -1.82% | -2.92% | 7.20% | 494,668 |
| ▼ MSCI AC Asia Pacific Index | 201.26 | -1.01% | -2.13% | 5.39% | 0.67% | 26,083,793 |
| ▼ HANG SENG (Hong kong) | 24,099.14 | -3.30% | -6.64% | -3.02% | -11.50% | 3,691,771 |
| ▲ SHANGHAI SE Comp. (China) | 3,613.97 | 0.19% | -2.41% | 5.45% | 4.06% | 7,200,828 |
| ▲ NIKKEI 225 (Japan) | 30,500.05 | 0.58% | 0.39% | 12.91% | 11.13% | 4,212,719 |
| ▲ S&P/ASX 200 (Australia) | 7,248.17 | -2.10% | -2.38% | -3.23% | 9.60% | 1,690,586 |
| ▼ KOSPI (South Korea) | 3,140.51 | -1.46% | -1.87% | 2.61% | 9.29% | 1,863,275 |

*Legend: Variation 1D: 1 Day; 5D: 5 Days; 1M: 1 Month; YTD: Var.% 12/31/20 to date

Global Markets: Intraday Evolution (var %)

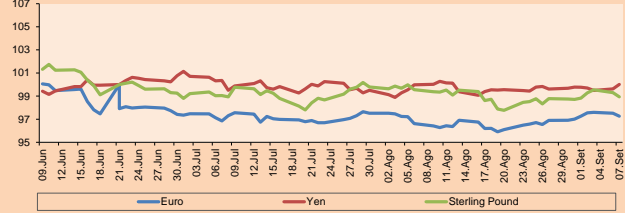


Source: Bloomberg

| Currency | Price | 1 D* | 5 D* | 1 M* | YTD* |
|--------------------|----------|--------|--------|--------|--------|
| ▲ Euro | 1.1726 | 0.01% | -0.72% | 0.24% | -4.01% |
| ▼ Yen | 109.4400 | -0.45% | -0.50% | -0.31% | 6.00% |
| ▼ Sterling Pound | 1.3657 | -0.61% | -1.31% | 0.25% | -0.10% |
| - Yuan | 6.4661 | 0.00% | 0.22% | -0.54% | -0.94% |
| ▲ Hong Kong Dollar | 7.7871 | 0.06% | 0.09% | -0.05% | 0.44% |
| ▲ Brazilian Real | 5.3253 | 0.68% | 2.10% | -1.02% | 2.44% |
| ▲ Argentine Peso | 98.4644 | 0.10% | 0.28% | 1.18% | 17.02% |

*Legend: Variación 1D: 1 Día; 5D: 5 Días; 1M: 1 Mes; YTD: Var.% 31/12/20 a la fecha

Foreign Exchange Indices (3 months)

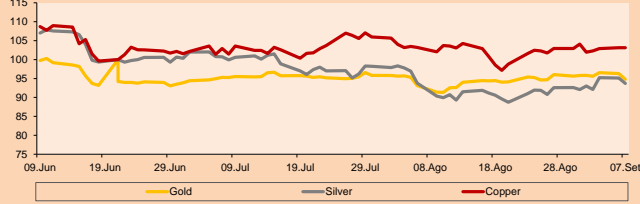


Base: 21/06/21=100
Source: Bloomberg

| Commodities | Close | 1 D* | 5 D* | 1 M* | YTD* |
|-------------------------------------|-----------|--------|--------|---------|---------|
| ▲ Oro (US\$ Oz. T) (LME) | 1,764.16 | 0.56% | -1.65% | -0.95% | -7.07% |
| ▼ Plata (US\$ Oz. T) (LME) | 22.27 | -0.52% | -6.19% | -3.28% | -15.65% |
| ▼ Cobre (US\$ TM) (LME) | 9,049.15 | -2.77% | -5.25% | 0.06% | 16.78% |
| ▼ Zinc (US\$ TM) (LME) | 2,997.40 | -2.48% | -2.32% | 2.53% | 9.82% |
| ▼ Petroleo WTI (US\$ Barril) (NYM) | 70.29 | -2.33% | -0.23% | 13.12% | 46.41% |
| ▼ Estano (US\$ TM) (LME) | 34,830.00 | -0.70% | 1.71% | 7.01% | 69.53% |
| ▼ Plomo (US\$ TM) (LME) | 2,154.25 | -0.95% | -6.14% | -11.98% | 9.03% |
| ▼ Azúcar #11 (US\$ Libra) (NYB-ICE) | 19.59 | -1.36% | -0.51% | -3.26% | 37.28% |
| ▼ Cacao (US\$ TM) (NYB-ICE) | 2,593.00 | -2.70% | -1.67% | 1.01% | 3.64% |
| ▼ Café Arábica (US\$ TM) (NYB-ICE) | 182.60 | -2.04% | -2.25% | 0.61% | 35.46% |

*Leyenda: Variación 1D: 1 Día; 5D: 5 Días; 1M: 1 Mes; YTD: Var.% 31/12/20 a la fecha

Principal Metals Index (3 months)



Base: 21/06/21=100
Source: Bloomberg

Equity

Germany (Stocks from DAX Index)

| Largest gains | Curr. | Price | ▲% | Exchange | Largest losses | Curr. | Price | ▼% | Exchange |
|---------------|-------|-------|------|----------|----------------|-------|--------|-------|----------|
| FME GY | EUR | 60.54 | 0.70 | Xetra | CON GY | EUR | 90.68 | -5.43 | Xetra |
| RWE GY | EUR | 32.13 | 0.50 | Xetra | SIE GY | EUR | 141.98 | -5.04 | Xetra |
| DWNI GY | EUR | 52.92 | 0.34 | Xetra | VOW3 GY | EUR | 181 | -4.59 | Xetra |
| BAYN GY | EUR | 45.27 | 0.13 | Xetra | MUV2 GY | EUR | 229.1 | -4.48 | Xetra |

Europe (Stocks from STOXX EUROPE 600)

| Largest gains | Curr. | Price | ▲% | Exchange | Largest losses | Curr. | Price | ▼% | Exchange |
|---------------|-------|-------|------|----------|----------------|-------|--------|-------|--------------|
| AZN LN | Gbp | 8569 | 6.15 | Londres | ADDTB SS | SEK | 165 | -8.84 | Stockholm |
| LHA GY | EUR | 8,664 | 5.53 | Xetra | PRU LN | Gbp | 1324.5 | -8.37 | Londres |
| ADP FP | EUR | 106 | 4.59 | EN Paris | MT NA | EUR | 25,025 | -8.03 | EN Amsterdam |
| CNA LN | Gbp | 53.42 | 4.58 | Londres | CBK GY | EUR | 5,034 | -7.92 | Xetra |

Global Overview:

United States:

Major US indexes closed the day negatively as the collapse of Chinese giant Evergrande drove investors away and fueled a selloff earlier today. In this way, both the Nasdaq and the S&P 500 suffered their biggest daily percentage drops since May. Also, the Dow Jones ended lower, registering its biggest daily percentage drop since July. On the other hand, investors focus their attention on the results of the Fed's political meeting, where the reduction by the central bank is expected to take place gradually. On the other hand, the price of US Treasuries rises, as concerns about the Evergrande default could impact the world economy. In relation to stocks, Microsoft -1.86%, Alphabet -1.48%, Amazon -3.08%, Apple -2.14%, Facebook-2.47% and Tesla -3.86% weigh on today's results. By contrast, airline stocks rose as restrictions were lifted in November for countries in China, Britain and other European countries that have received vaccines. Thus, DOW JONES -1.78%; S&P 500 -1.70%; NASDAQ -2.19% ended the day with negative results.

Europe:

The main indexes on the European continent ended the session sharply lower, due to fears about the Chinese real estate company Evergrande Group, at the beginning of a week full of meetings of the main central banks. Global markets are experiencing some nervousness ahead of the Fed's September meeting. The pan-European STOXX 600 index closed the session down, recording its worst day so far this year. Mining stocks were the worst hit, following the fall in commodity prices. On the other hand, the euro zone fear indicator jumped to an almost eight-month high in the session. In the UK, stocks closed at their lowest level since July on fears about Chinese developers. The Bank of England is expected to adopt a more hawkish tone following inflation growth. In Germany, the index closed at its lowest level since May 19, driven by concerns about China and economic data showing a larger-than-expected increase in producer prices last month. In France, stocks closed at a two-month low, amid a global drop in equities. On the political front, France recalled its ambassadors from the US and Australia following the rejection of the trilateral submarine agreement between these countries. Thus, FTSE 100 -0.86%; CAC 40 -1.74%; DAX -2.31%; STOXX 600 -1.67% ended the day lower.

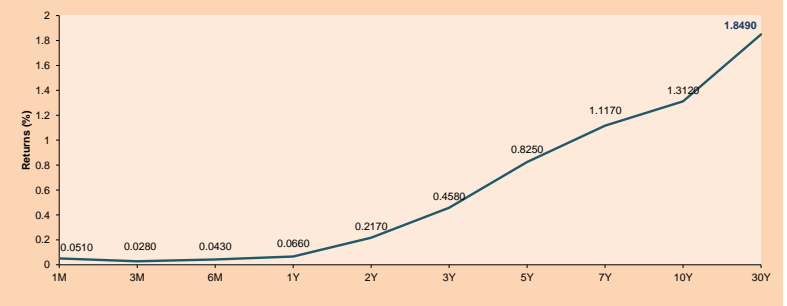
Asia:

In Asia, major indexes started the week with negative returns from the looming catastrophe at indebted property giant Evergrande. In Hong Kong, stocks fell to an 11-month low as the collapse of property developer China Evergrande Group sent shares in the sector lower. Regulators have warned that its \$305 billion liabilities could create wider risks to China's financial system if its debts do not stabilize. Similarly, insured shares plunged AIA fell 4.94% while Ping An Insurance fell 5.78%. Elsewhere, in Japan, stocks closed higher on Friday to post their fourth consecutive weekly gain after chipmakers soared. In Australia, the S&P/ASX 200 closed in its worst session in 7 months due to falling commodity prices. Markets in mainland China, Japan, and South Korea remained flat as they were closed for vacations. Thus, HANG SENG -3.30%; CSI 300 -1.00%; S&P/ASX 200 -2.10% closed the first day of the week with losses.

ETFs

| ETFs | Curr. | Close | 1D | 5D | 30 D | YTD | Exchange |
|------------------------------|-------|--------|--------|--------|---------|---------|-----------|
| SPDR S&P 500 ETF TRUST | USD | 434.04 | -1.67% | -2.81% | -2.10% | 16.09% | NYSE Arca |
| ISHARES MSCI EMERGING MARKET | USD | 49.99 | -2.69% | -0.02% | 0.99% | -3.25% | NYSE Arca |
| ISHARES IBOXX HIGH YLD CORP | USD | 87.69 | -0.35% | -0.41% | 0.46% | 0.45% | NYSE Arca |
| FINANCIAL SELECT SECTOR SPDR | USD | 36.55 | -2.74% | -3.84% | -3.02% | 23.98% | NYSE Arca |
| VAANEK GOLD MINERS ETF | USD | 30.45 | -0.43% | -5.17% | -1.30% | -15.46% | NYSE Arca |
| ISHARES RUSSELL 2000 ETF | USD | 217.19 | -2.38% | -2.55% | 0.77% | 10.78% | NYSE Arca |
| SPDR GOLD SHARES | USD | 164.94 | 0.74% | -1.67% | -1.06% | -7.52% | NYSE Arca |
| ISHARES 20+ YEAR TREASURY BO | USD | 151.02 | 1.21% | 1.15% | 0.31% | -4.25% | NASDAQ GM |
| INVESCO QQQ TRUST SERIES 1 | USD | 365.70 | -2.17% | -2.82% | -0.55% | 16.56% | NASDAQ GM |
| ISHARES BIOTECHNOLOGY ETF | USD | 169.91 | -2.13% | -0.24% | 1.65% | 12.16% | NASDAQ GM |
| ENERGY SELECT SECTOR SPDR | USD | 47.24 | -4.22% | -3.91% | 2.94% | 24.64% | NYSE Arca |
| PROSHARES ULTRA VIX ST FUTUR | USD | 27.31 | 16.31% | 21.00% | 9.69% | -74.36% | Close BZX |
| UNITED STATES OIL FUND LP | USD | 49.60 | -1.43% | 0.24% | 14.21% | 50.26% | NYSE Arca |
| ISHARES MSCI BRAZIL ETF | USD | 32.32 | -2.94% | -8.57% | -7.29% | -12.81% | NYSE Arca |
| SPDR S&P OIL & GAS EXP & PR | USD | 84.40 | -4.04% | -3.12% | 15.33% | 44.27% | NYSE Arca |
| UTILITIES SELECT SECTOR SPDR | USD | 65.78 | -0.93% | -3.73% | -5.93% | 4.91% | NYSE Arca |
| ISHARES US REAL ESTATE ETF | USD | 106.23 | -0.52% | -1.16% | -0.72% | 24.03% | NYSE Arca |
| SPDR S&P BIOTECH ETF | USD | 128.76 | -3.10% | -1.77% | 5.43% | -8.54% | NYSE Arca |
| ISHARES IBOXX INVESTMENT GRA | USD | 135.78 | 0.31% | 0.13% | 0.41% | -1.70% | NYSE Arca |
| ISHARES JP MORGAN US EMERGI | USD | 111.98 | -0.46% | -0.95% | -0.11% | -3.39% | NASDAQ GM |
| REAL ESTATE SELECT SECT SPDR | USD | 46.27 | -1.24% | -1.78% | -1.55% | 26.56% | NYSE Arca |
| ISHARES CHINA LARGE-CAP ETF | USD | 38.18 | -4.36% | -7.96% | -1.27% | -17.77% | NYSE Arca |
| CONSUMER STAPLES SPDR | USD | 70.21 | -1.61% | -2.57% | -3.50% | 4.09% | NYSE Arca |
| VAANEK JUNIOR GOLD MINERS | USD | 39.92 | -1.38% | -5.78% | 0.58% | -26.40% | NYSE Arca |
| SPDR BBG BARC HIGH YIELD BND | USD | 109.58 | -0.34% | -0.35% | 0.57% | 0.59% | NYSE Arca |
| VANGUARD REAL ESTATE ETF | USD | 105.75 | -0.61% | -1.28% | -0.79% | 24.51% | NYSE Arca |
| GRAYSCALE BITCOIN TRUST BTC | USD | 34.56 | -8.34% | -3.29% | -12.70% | 7.98% | OTC US |

USA Treasury Bonds Yield Curve (%)



Source: Bloomberg

Capital Market Laboratory Coordinator: Economist Bruno Bellido

Collaboration: María Camarena, Alonso García, Adrian Paredes y Jairo Valverde

email: pulsohorsatil@ulima.edu.pe

facebook: www.facebook.com/pulsohorsatil

LIMA

Stocks

| Ticker | Currency | Price | 1D* | 5D* | 30D* | YTD* | Frequency | Volume (US\$) | Beta | Dividend Yield (%) | Price Earning | Market Cap. (M US\$) | Economic Sector* | Index Weight |
|-----------------|----------|--------|--------|--------|---------|---------|-----------|---------------|------|--------------------|---------------|----------------------|------------------|--------------|
| ▼ ALICORC1 PE** | S/. | 4.75 | -0.13% | 0.14% | -0.84% | -9.03% | 100.00% | 28,350 | 0.99 | 17.58 | 9.77 | 984.27 | Industrial | 3.53% |
| ▼ ATACOCB1 PE** | S/. | 0.12 | 0.00% | -0.82% | 40.70% | -12.32% | 52.63% | 5,721 | 1.10 | 0.00 | - | 27.76 | Mining | 1.02% |
| ▼ BACKUSI1 PE** | S/. | 17.45 | -0.29% | -0.29% | 7.06% | -13.40% | 78.95% | 5,180 | 0.71 | 5.36 | 8.37 | 5,676.19 | Industrial | 0.82% |
| ▼ BAP PE** | US\$ | 103.82 | -2.97% | -3.24% | 9.80% | -35.35% | 100.00% | 75,094 | 1.19 | 1.17 | - | 9,798.77 | Diverse | 5.82% |
| ▲ BVN PE** | US\$ | 7.19 | 3.01% | -2.04% | 15.97% | -40.08% | 89.47% | 34,990 | 1.11 | 0.00 | - | 1,978.41 | Mining | 5.88% |
| ▼ CASAGRC1 PE** | S/. | 5.35 | -0.56% | -2.01% | 35.10% | 12.63% | 89.47% | 4,140 | 1.27 | 13.98 | 4.88 | 109.42 | Agricultural | 1.31% |
| ▼ BBVAC1 PE** | S/. | 1.69 | -0.59% | 0.00% | 12.67% | -19.37% | 84.21% | 14,218 | 1.16 | 2.58 | 17.22 | 2,773.29 | Finance | 2.85% |
| - CORAREH1 PE** | S/. | 1.15 | 0.00% | 2.68% | 25.00% | 29.21% | 100.00% | 40,096 | 1.25 | 20.77 | 2.27 | 345.95 | Industrial | 1.72% |
| - CPACASC1 PE** | S/. | 4.60 | 0.00% | 0.00% | 8.24% | -13.21% | 94.74% | 279,527 | 0.70 | 17.17 | 32.86 | 518.41 | Industrial | 2.38% |
| ▼ CVERDEC1 PE** | US\$ | 17.10 | -4.31% | 2.15% | 29.06% | -18.26% | 100.00% | 86,144 | 1.39 | 3.34 | 7.64 | 5,985.96 | Mining | 5.25% |
| - ENGEPEC1 PE** | S/. | 1.86 | 0.00% | 3.91% | -4.86% | -21.52% | 47.37% | 727 | 0.68 | 17.89 | 8.19 | 1,081.89 | Public Services | 1.44% |
| - ENDISPC1** | S/. | 4.30 | 0.00% | 13.16% | 40.98% | -20.37% | 47.37% | 4,623 | 0.80 | 3.97 | 9.46 | 666.71 | Public Services | 0.98% |
| ▲ FERREYC1 PE** | S/. | 1.67 | 1.21% | -1.76% | 15.17% | -4.02% | 100.00% | 35,927 | 1.16 | 10.90 | 5.19 | 395.63 | Diverse | 4.90% |
| ▼ AENZAC1 PE** | S/. | 1.40 | -1.41% | 3.70% | 47.37% | -19.54% | 84.21% | 104,045 | 0.94 | 0.00 | - | 296.39 | Diverse | 4.05% |
| ▼ IFS PE** | US\$ | 21.17 | -4.85% | -5.49% | 5.85% | -31.58% | 89.47% | 21,525 | 1.25 | 3.64 | 6.02 | 2,444.03 | Diverse | 7.22% |
| ▼ INRETC1 PE** | US\$ | 32.00 | -1.20% | 0.47% | 21.67% | -18.37% | 89.47% | 1,504 | 0.87 | 2.13 | 54.02 | 3,289.83 | Diverse | 5.28% |
| ▲ LUSURC1 PE** | S/. | 11.85 | 0.59% | 2.16% | 12.86% | -53.53% | 63.16% | 5,467 | 0.78 | 9.41 | 12.84 | 1,401.09 | Public Services | 1.81% |
| ▼ MINSURI1 PE** | S/. | 2.60 | -3.70% | -2.99% | 28.71% | 40.54% | 89.47% | 34,236 | 0.99 | 12.85 | 3.14 | 1,820.03 | Mining | 3.09% |
| - PML PE** | US\$ | 0.11 | 0.00% | -4.35% | 29.41% | 3.77% | 31.58% | 2,079 | 1.24 | 0.00 | - | 29.08 | Mining | 2.12% |
| - RELAPAC1 PE** | S/. | 0.17 | 0.00% | -1.71% | 5.52% | 149.28% | 100.00% | 3,042 | 1.00 | 0.00 | 3.07 | 347.43 | Industrial | 2.12% |
| ▼ SCCO PE** | US\$ | 56.42 | -3.42% | -8.10% | -7.40% | -14.39% | 73.68% | 137,708 | 0.78 | 4.79 | 14.90 | 43,617.24 | Mining | 2.14% |
| ▼ SIDERC1 PE** | S/. | 1.14 | -2.56% | 3.64% | 17.53% | 5.75% | 94.74% | 1,385 | 0.90 | 43.54 | 2.98 | 193.76 | Industrial | 1.43% |
| ▼ TV PE** | US\$ | 0.14 | -2.84% | -9.27% | 3.79% | -6.80% | 73.68% | 26,103 | 1.20 | 0.00 | - | 135.51 | Mining | 2.93% |
| ▼ UNACEMC1 PE** | S/. | 1.45 | -2.03% | 1.40% | 38.10% | -6.45% | 100.00% | 72,290 | 1.26 | 3.17 | 11.45 | 640.11 | Industrial | 3.00% |
| - VOLCABC1 PE** | S/. | 0.59 | 0.00% | -3.28% | 103.45% | 13.46% | 100.00% | 140,647 | 1.80 | 0.00 | - | 583.99 | Mining | 5.90% |
| - NEXAPEC1 PE** | S/. | 3.00 | 0.00% | 3.45% | 33.33% | 6.01% | 36.84% | 7,284 | 1.15 | 0.00 | 8.14 | 969.65 | Mining | 1.56% |

Quantity of shares: 26
 Source: Bloomberg, Económica
 * Bloomberg Industry Classification System
 ** PER is used in the stock market and original currency of the instrument
 *Legend: Variation 1D: 1 Day; 5D: 5 Days, 1M: 1 Month; YTD: Var.% 12/31/20 to date

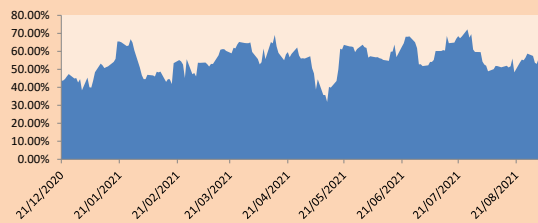
Sectorial Indices

| | Close | 1D* | 5D* | 30D* | YTD* | Beta |
|-----------------------|--------|--------|--------|--------|---------|------|
| ▼ S&P/BVLMining | 365.07 | -1.88% | -5.59% | 3.12% | -6.38% | 0.78 |
| ▼ S&P/BVLConsumer | 964.51 | -0.62% | -0.05% | 18.73% | -11.40% | 0.83 |
| ▼ S&P/BVLIndustrials | 192.67 | -0.18% | 0.73% | 21.58% | 1.11% | 0.98 |
| ▼ S&P/BVLFinancials | 779.31 | -2.93% | -2.12% | 10.45% | -24.62% | 1.12 |
| ▼ S&P/BVLConstruction | 208.04 | -0.72% | 1.96% | 25.17% | -0.52% | 0.90 |
| - S&P/BVLPublicSvcs | 506.40 | 0.00% | 3.01% | 14.45% | -17.54% | 0.38 |
| - S&P/BVLElectricUtil | 494.37 | 0.00% | 3.01% | 14.45% | -17.54% | 0.38 |

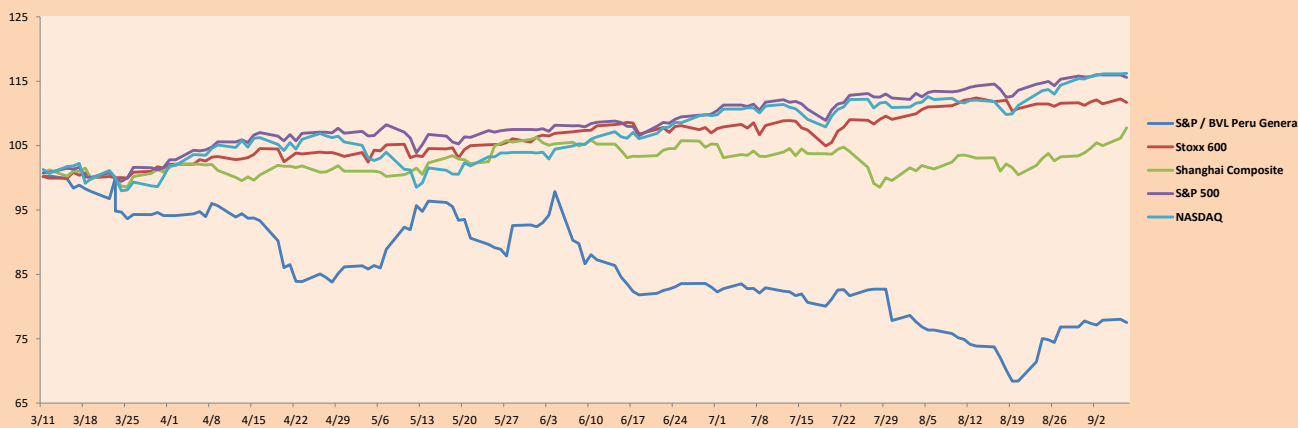
S&P/BVLConstructionTRPEN

*Legend: Variation 1D: 1 Day; 5D: 5 Days, 1M: 1 Month; YTD: Var.% 12/31/20 to date

Correlation Graph of Returns of Mining Index against Metallic Index of London (3 months)



Indices (6 months)



Base: 23/03/21=100
 Source: Bloomberg

Capital Market Laboratory Coordinator: Economist Bruno Bellido
 Collaboration: Maria Camarena, Alonso Garcia, Adrian Paredes y Jairo Valverde
 email: pulsobursatil@ulima.edu.pe
 facebook: www.facebook.com/pulsobursatil.ul

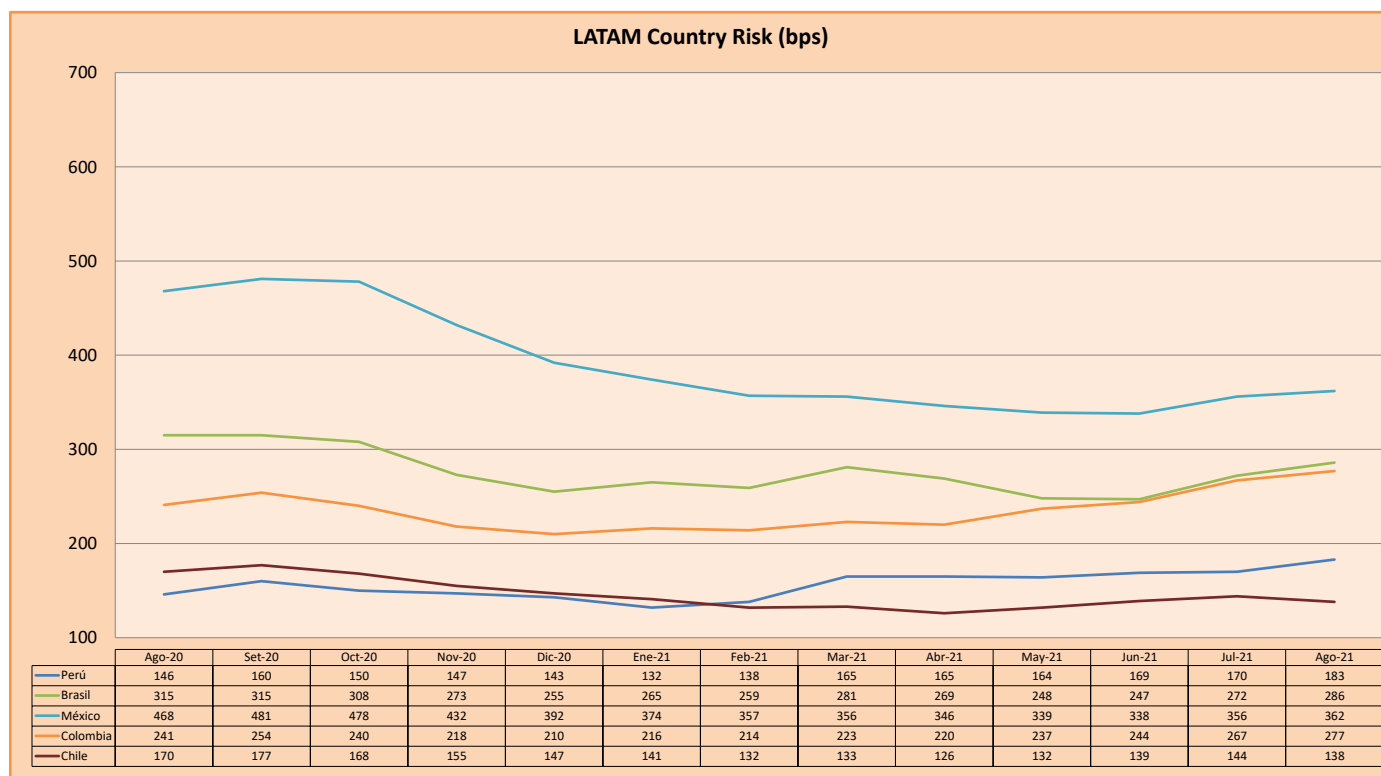
SOVEREIGN RATING

| RISK RATINGS | | | |
|--------------|------|-------|--|
| Moody's | S&P | Fitch | |
| Aaa | AAA | AAA | Prime |
| Aa1 | AA+ | AA+ | High credit quality |
| Aa2 | AA | AA | |
| Aa3 | AA- | AA- | |
| A1 | A+ | A+ | Medium-high grade, with low credit risk |
| A2 | A | A | |
| A3 | A- | A- | |
| Baa1 | BBB+ | BBB+ | Moderate Credit Risk |
| Baa2 | BBB | BBB | |
| Baa3 | BBB- | BBB- | |
| Ba1 | BB+ | BB+ | It has speculative elements and it is subject to substantial credit risk |
| Ba2 | BB | BB | |
| Ba3 | BB- | BB- | |
| B1 | B+ | B+ | It is considered speculative and it has high credit risk |
| B2 | B | B | |
| B3 | B- | B- | |
| Caa1 | CCC+ | CCC | Bad credit conditions and it is subject to high credit risk |
| Caa2 | CCC | | |
| Caa3 | CCC- | | |
| Ca | CC | DDD | Very close to default or in default |
| C | C | | |
| | D | | |

Source: Bloomberg

| Latin America Credit Rating | | | |
|-----------------------------|---------|-------|------|
| Clasificadora de riesgo | | | |
| Country | Moody's | Fitch | S&P |
| Peru | Baa1 | BBB+ | BBB+ |
| México | Ba2 | BB- | BB- |
| Venezuela | C | WD | NR |
| Brazil | Ba2 | BB- | BB- |
| Colombia | Baa2 | BB+ | BB+ |
| Chile | A1 | A- | A |
| Argentina | Ca | WD | CCC+ |
| Panama | Baa2 | BBB- | BBB |

Source: Bloomberg



Source: BCRP

Capital Market Laboratory Coordinator: Economist Bruno Bellido
Collaboration: Maria Camarena, Alonso García, Adrian Paredes y Jairo Valverde
email: pulsobursatil@ulima.edu.pe
facebook: www.facebook.com/pulsobursatil.ul