

PULSO BURSÁTIL

FACULTAD DE CIENCIAS EMPRESARIALES Y ECONÓMICAS
CARRERA DE ECONOMÍA
LABORATORIO DE MERCADO DE CAPITALES

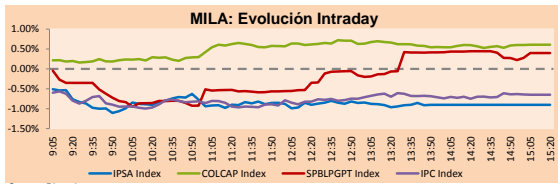


MILA

Lima, October 1, 2021

Main Indexes	Close	1 D	5 D	1 M	YTD	Cap. Burs. (US\$ bill)
▼ IPSA (Chile)	4,326.72	-0.82%	-1.15%	-3.07%	3.58%	104.63
▼ IGPA (Chile)	21,558.47	-0.76%	-1.28%	-3.41%	2.62%	125.12
▲ COLSC (Colombia)	963.93	0.35%	0.50%	0.02%	-8.98%	4.55
▲ COLCAP (Colombia)	1,370.25	0.61%	0.65%	3.22%	-4.70%	80.50
▲ S&P/BVL (Perú)*	18,348.74	0.38%	0.22%	3.79%	-11.88%	83.08
▲ S&P/BVL SEL (Perú)	482.57	0.34%	0.03%	3.98%	-12.48%	75.15
▼ S&P/BVL LIMA 25	24,764.85	-0.40%	-0.81%	4.28%	-1.72%	82.04
▼ IPC (México)	51,060.05	-0.63%	-0.09%	-1.50%	15.87%	308.67
▲ S&P MILA 40	461.19	0.71%	0.72%	-3.00%	-13.74%	6,311.94

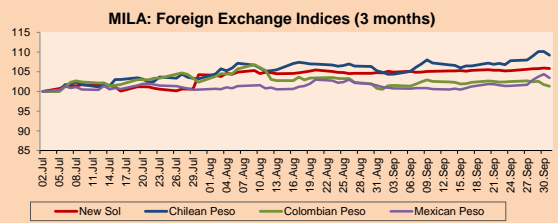
*Legend: Variation 1D: 1 day; 5D: 5 days; 1M: 1 Month; YTD: Var% 12/31/20 to date



Source: Bloomberg

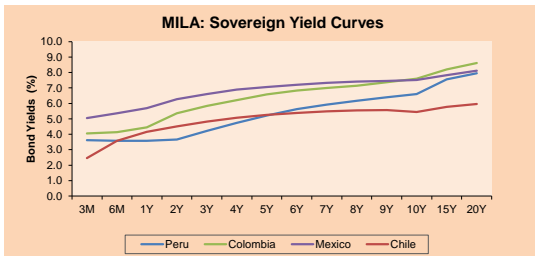
Currency	Price	1D*	5D*	30 D*	YTD*
▼ Sol (PEN)	4,130.3	-0.10%	0.50%	1.11%	14.16%
▼ Chilean Peso (CLP)	803.35	-0.83%	1.30%	4.16%	12.86%
▼ Colombian Peso (COP)	3,793.38	-0.38%	-1.15%	0.81%	10.60%
▼ Mexican Peso (MXN)	20.45	-0.93%	1.97%	2.26%	2.68%

*Legend: Variation 1D: 1 day; 5D: 5 days; 1M: 1 Month; YTD: Var% 12/31/20 to date



Base: 02/07/21=100
Source: Bloomberg

Fixed Income	Currency	Price	Bid Yield (%)	Ask Yield (%)	Duration
PERU 7.35 07/21/25	USD	121.138	1.65	1.52	3.37
PERU 4.125 08/25/27	USD	110.794	2.22	2.11	5.30
PERU 8.75 11/21/33	USD	154.762	3.29	3.21	8.41
PERU 6.55 03/14/37	USD	135.519	3.57	3.52	10.24
PERU 5.625 11/18/2050	USD	135.986	3.64	3.60	16.33
CHILE 2.25 10/30/22	USD	101.983	0.80	0.18	1.05
CHILE 3.125 01/21/26	USD	107.071	1.47	1.37	4.04
CHILE 3.625 10/30/42	USD	104.742	3.33	3.29	14.96
COLOM 11.85 03/09/28	USD	154.911	2.70	2.37	4.99
COLOM 10.375 01/28/33	USD	147.419	4.92	4.82	7.51
COLOM 7.375 09/18/37	USD	123.672	5.21	5.14	10.12
COLOM 6.125 01/18/41	USD	110.791	5.26	5.20	11.69
MEX 4 10/02/23	USD	110.791	5.256	5.203	11.69
MEX5.55 01/45	USD	117.562	4.36	4.32	13.90



Source: Bloomberg

Equity

Largest gains	Exchange	Currency	Price	▲%
BANCO CRED INVER	Chile	CLP	30303.00	2.38
SOUTHERN COPPER	Peru	USD	57.10	2.33
ALFA SAB-A	Mexico	MXN	14.61	2.10
GRUPO ARGOS SA	Colombia	COP	11340.00	1.61
AERO DEL PACIF-B	Mexico	MXN	243.50	1.46

Per Turnover	Exchange	Amount (US\$)
WALMART DE MEXIC	Mexico	51,953,523
AMERICA MOVIL-L	Mexico	32,955,459
GRUPO F BANORT-O	Mexico	29,466,020
CEMEX SAB-CPO	Mexico	22,266,838
GRUPO MEXICO-B	Mexico	20,733,029

Largest losses	Exchange	Currency	Price	▼%
CAP	Chile	CLP	8140	-5.57
CERVEZAS	Chile	CLP	6850	-5.12
CENCOSUD SA	Chile	CLP	1518	-3.19
MEGACABLE-CPO	Mexico	MXN	61.24	-2.95
PARQUE ARAUCO	Chile	CLP	804.01	-2.72

Per Volume	Exchange	Volume
ITAU CORPBANCA	Chile	652,439,213
BANCO SANTANDER	Chile	67,450,740
AMERICA MOVIL-L	Mexico	37,282,491
CEMEX SAB-CPO	Mexico	30,993,209
BANCO DE CHILE	Chile	24,413,541

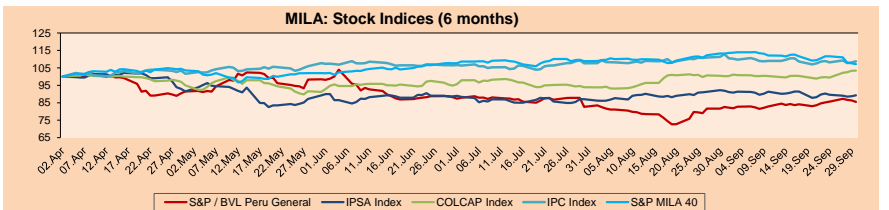
MILA

Peru: The General Index of the BVL ended today's session with a positive result of 0.38%. The index maintains an annual accumulated negative trend of -11.88% in local currency, while the adjusted yield in dollars amounts to -22.81%. Then, the S&P / BVL Peru SEL varied by + 0.34% while the S&P / BVL LIMA 25 by + 0.70%. The PEN spot reached \$ / 4.1303. Headline: Dollar closed slightly lower after sale of US \$ 61 million from the BCR

Chile: The IPSA index ended the day with a negative return of -0.82%. The sectors that benefited the least from the session were First Needs Products (-2.68%) and Real Estate Goods (-2.20). The worst performing stocks were CAP SA (-5.57%) and CIA Cervecerías Unidas SA SA (-5.12%). Headline: Chilean economy will fly to double-digit growth in September and the market is already debating another historic interest rate increase this month.

Colombia: The COLCAP index ended the day with a positive return of + 0.61%. The sectors that benefited the most from the session were Energy (+ 1.35%) and Non-Basic Consumer Products (+ 1.25%). The best performing stocks were Canacol Energy LTD (+ 1.96%) and Mineros SA (+ 1.83%). Headline: The dollar lost more than 62 pesos during the week

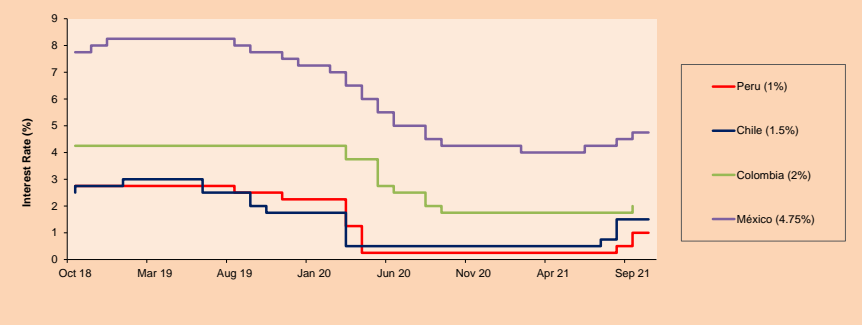
Mexico: The IPC index closed the day with a negative return of -0.63%. The sectors that benefited the least from the conference were Materials (-1.58%) and Health (-1.53%). The worst performing stocks were Megacable Holdings (-2.95%) and Coca-Cola Femsa SAB de CV (-2.28%). Headline: 'Storm' Coming; Banxico Anticipates Higher Inflation



Base: 05/04/21=100
Source: Bloomberg

ETFs	Curr.	Close	1D	5D	30 D	YTD	Exchange
▲ iShares MSCI All Peru Caped Index Fund	USD	26.4	0.13%	-1.16%	-0.90%	-23.88%	NYSE Arca
▲ iShares MSCI All Chile Caped Index Fund	USD	26.3	1.15%	-2.52%	-7.98%	-12.94%	Cboe BZX
▲ Global X MSCI Colombia	USD	10.4595	1.55%	4.07%	1.27%	-7.93%	NYSE Arca
▲ iShares MSCI Mexico Capped	USD	48.53	0.56%	-1.50%	-3.60%	12.89%	NYSE Arca
▼ iShares MSCI Emerging Markets	USD	50.33	-0.10%	-0.89%	-5.18%	-2.59%	NYSE Arca
▲ Vanguard FTSE Emerging Markets	USD	50.04	0.06%	-0.69%	-5.33%	-0.14%	NYSE Arca
▲ iShares Core MSCI Emergoina Markets	USD	61.78	0.03%	-0.82%	-4.87%	-0.42%	NYSE Arca
▲ iShares JP Morgan Emerging Markets Bonds	USD	62.72	0.08%	-0.60%	-2.20%	2.69%	Cboe BZX
▲ Morgan Stanley Emerging Markets Domestic	USD	5.86	0.17%	-2.33%	-6.84%	-6.84%	New York

MILA: Policy Rate



Source: Bloomberg

Capital Market Laboratory Coordinator: Economist Bruno Bellido
Collaboration: Maria Camarena, Alonso García, Adrian Paredes y Jairo Valverde
email: pulsobursatil@ulima.edu.pe
facebook: www.facebook.com/pulsobursatil

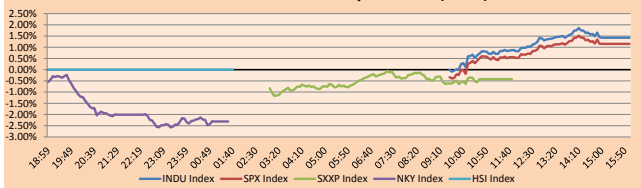
The content of this document is just for informational purposes. The information and opinions expressed should not be considered as recommendations for future decisions. Under any circumstances, the Capital Market Laboratory of University of Lima will be responsible for the use of the statements in this document.

WORLD

Main Indices	Close	1 D*	5 D*	1 M*	YTD*	Market Cap. (US\$ Mill.)
▲ Dow Jones (USA)	34,328.46	1.43%	-1.36%	-2.95%	12.15%	10,680,237
▲ Standard & Poor's 500 (EUEU)	4,357.04	1.15%	-2.21%	-3.93%	16.00%	38,579,916
▲ NASDAQ Composite (USA)	14,566.70	0.82%	-3.20%	-5.19%	13.02%	24,624,101
▲ Stoxx EUROPE 600 (Europe)	452.90	-0.42%	-2.24%	-4.03%	13.50%	10,889,474
▼ DAX (Germany)	15,156.44	-0.68%	-2.42%	-3.96%	10.48%	1,408,053
▼ FTSE 100 (United Kingdom)	7,027.07	-0.84%	-0.35%	-1.56%	8.77%	1,498,006
▼ CAC 40 (France)	6,517.69	-0.04%	-1.82%	-2.58%	17.41%	1,840,534
▲ IBEX 35 (Spain)	8,799.50	0.04%	-0.83%	-0.73%	8.99%	507,158
▲ MSCI AC Asia Pacific Index	194.99	-1.13%	-2.91%	-4.88%	-2.47%	25,638,744
▼ HANG SENG (Hong Kong)	24,575.64	-0.36%	0.26%	-5.58%	-9.75%	3,750,853
▲ SHANGHAI SE Comp. (China)	3,568.17	0.90%	-2.03%	0.03%	2.74%	7,169,135
▼ NIKKEI 225 (Japan)	28,771.07	-2.31%	-4.89%	-1.23%	4.53%	4,222,959
▼ S&P / ASX 200 (Australia)	7,185.55	-2.00%	-2.14%	-4.48%	9.09%	1,677,959
▼ KOSPI (South Korea)	3,019.18	-0.63%	-0.09%	-5.68%	5.07%	1,779,893

*Legend: Variation 1D: 1 Day; 5D: 5 Days; 1M: 1 Month; YTD: Var. %: 12/31/20 to date

Global Markets: Intraday Evolution (var %)

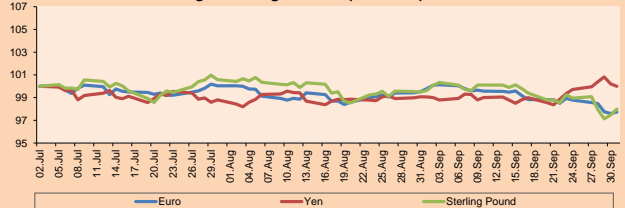


Source: Bloomberg

Currency	Price	1 D*	5 D*	1 M*	YTD*
▲ Euro	1,159.96	0.14%	-1.06%	-2.05%	-5.08%
▼ Yen	111,050.00	-0.22%	0.29%	0.95%	7.55%
▲ Sterling Pound	1,364.48	0.53%	-0.97%	-1.63%	-0.91%
- Yuan	6,444.48	0.00%	-0.33%	-0.23%	-1.26%
▼ Hong Kong Dollar	7,785.88	-0.01%	0.00%	0.11%	0.42%
▼ Brazilian Real	5,364.3	-1.44%	0.58%	3.43%	3.19%
▼ Argentine Peso	98,794.3	0.06%	0.23%	1.02%	17.41%

*Legend: Variation 1D: 1 Day; 5D: 5 Days; 1M: 1 Month; YTD: Var. %: 12/31/20 to date

Foreign Exchange Indices (3 months)

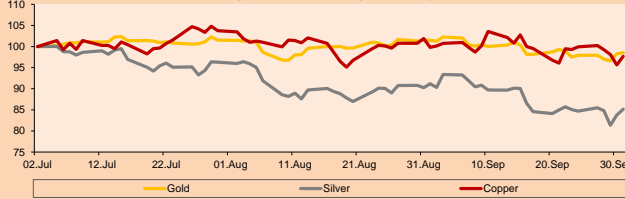


Base: 02/07/21=100
Source: Bloomberg

Commodities	Close	1 D*	5 D*	1 M*	YTD*
▲ Oro (US\$ Oz. T) (LME)	1,760.98	0.23%	0.60%	-2.92%	-7.24%
▲ Plata (US\$ Oz. T) (LME)	22.54	1.66%	0.53%	-6.64%	-14.63%
▲ Cobre (US\$ TM) (LME)	9,135.00	2.13%	-2.23%	-2.11%	17.89%
▲ Zinc (US\$ TM) (LME)	2,970.35	-0.18%	-4.86%	-0.01%	8.53%
▲ Petróleo WTI (US\$ Barril) (NYM)	75.88	1.13%	2.57%	11.07%	58.58%
▼ Estiáno (US\$ TM) (LME)	35,060.00	-0.60%	-7.88%	3.12%	70.65%
▼ Plomo (US\$ TM) (LME)	2,182.50	2.95%	0.61%	-8.94%	10.46%
▲ Azúcar #11 (US\$ Libra) (NYB-ICE)	20.06	-1.38%	0.65%	-1.86%	40.57%
▲ Cacao (US\$ TM) (NYB-ICE)	2,710.00	2.19%	4.59%	6.78%	8.31%
▲ Café Arábica (US\$ TM) (NYB-ICE)	204.05	5.18%	4.99%	4.29%	51.37%

*Legend: Variación 1D: 1 Día; 5D: 5 Días; 1M: 1 Mes; YTD: Var. %: 31/12/20 a la fecha

Principal Metals Index (3 months)



Base: 02/07/21=100
Source: Bloomberg

Equity

Germany (Stocks from DAX Index)					
Largest gains	Curr.	Price	▲ %	Exchange	
DB1 GY	EUR	142.75	1.60	Xetra	
AIR GY	EUR	116.64	1.50	Xetra	
MTX GY	EUR	198	1.33	Xetra	
BMW GY	EUR	83.83	1.29	Xetra	
					Largest losses
					1COV GY
					ENR GY
					DBK GY
					FRE GY

Global Overview:

United States:

The major U.S. indices close the daily trading day with positive returns, driven by favorable economic data, a possible oral treatment against COVID-19 and the passage of the infrastructure bill. On the economic data front, the ISM manufacturing PMI rose to 61.1, for the second consecutive month and above analysts' expectations of 59.6. This rebound came on the back of solid increases in production, new orders and a slight uptick in employment levels. On the political front, the short-term appropriations bill was passed that will keep the government running through December. On the indices side, the DOW outperformed the other indices as Merck +8.37% posted positive results on its COVID-19 antiviral pill. The S&P 500 also gained, thanks to a rally in cyclical stocks. The NASDAQ underperformed, due to heavy turnover in growth and technology stocks, as inflation expectations and higher rates remained in place. Thus, DOW JONES +1.43%; S&P 500 +1.15% and NASDAQ +0.82% ended the day with positive results.

Europe:

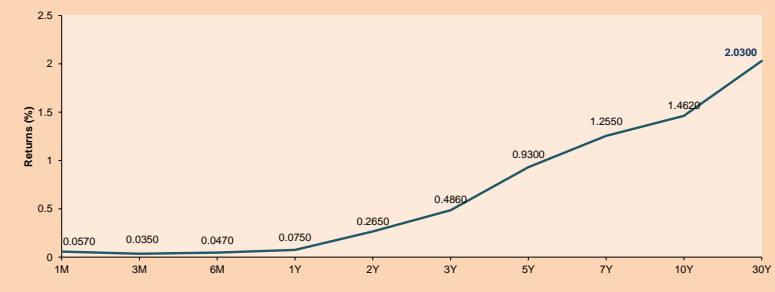
Major European indexes ended the session with negative returns, reaching their lowest levels in two months, on inflation fears. Eurozone inflation rose 3.4% on an annual basis in September, according to official data on Friday, the highest reading since September 2008 and up from 3% in August. The pan-European STOXX 600 index closed down -0.4%, recovering some of its earlier losses as it was down as much as -1.7% at the start of trading. Mining stocks fell -1.3% and led the losses, while travel and leisure stocks rose +3%. The British market, reflected in the FTSE 100, ended lower due to the end of the furlough scheme and the country's energy problems, where industrial and consumer discretionary stocks took the brunt of the sell-off. Meanwhile, the German DAX index ended in the red on slowing growth and rising inflation, where the worst performers were Sartorius AG -6.11%, Siemens AG -3.90%, and Qiagen NV -2.87%. The French market had negative performances due to declines in the food and pharmaceuticals, gas and water, and general financials sectors. Thus, FTSE 100 -0.84%; CAC 40 -0.04%; DAX -0.68%; STOXX 600 -0.42% all ended at negative levels.

Asia:

The main Asian indexes closed with lower yields, due to fears of rising global inflation, the weakness of the Chinese economy and supply chain problems. It should be noted that both the Chinese and Hong Kong markets have not opened today due to the start of the Golden Week Holiday. On the other hand, Japanese stocks fell to one-month lows, as the disruption of the supply chain may prolong the inflationary situation. Likewise, the shortage of personnel, the lack of ships, the increase in the price of gasoline and the shortage of energy have negatively affected the market. Similarly, South Korea's KOSPI posted the biggest drop in 6 weeks, as concerns about "temporary inflation" will arise after current market supply constraints. Finally, Australian stocks ended lower, dragged down by the mining and financial sectors as the Chinese energy crisis worries local investors despite the rise in metal prices. Thus, NIKKEI -2.31%; HANG SENG -0.36 %; CSI 300 +0.67%; S & P / ASX 200 -2.00%; KOSPI -1.62% ended with negative returns.

ETFs	Curr.	Close	1D	5D	30 D	YTD	Exchange
SPDR S&P 500 ETF TRUST	USD	434.24	1.19%	-2.18%	-3.89%	16.14%	NYSE Arca
ISHARES MSCI EMERGING MARKET	USD	50.33	-0.10%	-0.89%	-5.18%	-2.59%	NYSE Arca
ISHARES IBOXX HIGH YLD CORP	USD	87.41	-0.09%	-0.57%	-0.55%	0.13%	NYSE Arca
FINANCIAL SELECT SECTOR SPDR	USD	38.15	1.65%	-0.18%	-0.08%	29.41%	NYSE Arca
VANECK GOLD MINERS ETF	USD	29.33	-0.48%	-1.18%	-9.42%	-18.57%	NYSE Arca
ISHARES RUSSELL 2000 ETF	USD	222.28	1.61%	-0.35%	-2.27%	13.37%	NYSE Arca
SPDR GOLD SHARES	USD	164.59	0.23%	0.79%	-3.01%	-7.72%	NYSE Arca
ISHARES 20+ YEAR TREASURY BO	USD	145.35	0.71%	-1.06%	-2.38%	-7.85%	NASDAQ GM
INVESCO QQQ TRUST SERIES 1	USD	360.18	0.62%	-3.52%	-5.36%	14.80%	NASDAQ GM
ISHARES BIOTECHNOLOGY ETF	USD	158.93	-1.70%	-6.78%	-8.69%	4.91%	NASDAQ GM
ENERGY SELECT SECTOR SPDR	USD	53.84	3.36%	5.79%	12.90%	42.06%	NYSE Arca
PROSHARES ULTRA VIX ST FUTUR	USD	23.21	-5.46%	13.27%	10.05%	-78.21%	Close BZX
UNITED STATES OIL FUND LP	USD	53.26	1.33%	2.78%	11.12%	61.35%	NYSE Arca
ISHARES MSCI BRAZIL ETF	USD	33.08	2.96%	-1.05%	-9.74%	-10.76%	NYSE Arca
SPDR S&P OIL & GAS EXP & PR	USD	99.24	2.61%	7.81%	20.98%	69.64%	NYSE Arca
UTILITIES SELECT SECTOR SPDR	USD	63.88	0.00%	-1.93%	-8.01%	1.88%	NYSE Arca
ISHARES US REAL ESTATE ETF	USD	103.83	1.41%	-1.48%	-6.25%	21.23%	NYSE Arca
SPDR S&P BIOTECH ETF	USD	126.17	0.37%	-3.22%	-6.60%	-10.38%	NYSE Arca
ISHARES IBOXX INVESTMENT GRA	USD	133.74	0.53%	-0.87%	-1.11%	-3.18%	NYSE Arca
ISHARES JP MORGAN US EMERG	USD	109.69	-0.34%	-1.13%	-3.13%	-5.37%	NASDAQ GM
REAL ESTATE SELECT SECT SPDR	USD	44.93	1.08%	-2.13%	-7.36%	22.89%	NYSE Arca
ISHARES CHINA LARGE-CAP ETF	USD	38.62	-0.80%	0.99%	-7.72%	-16.82%	NYSE Arca
CONSUMER STAPLES SPDR	USD	69.02	0.26%	-2.27%	-4.98%	2.33%	NYSE Arca
VANECK JUNIOR GOLD MINERS	USD	38.35	0.03%	-1.49%	-10.46%	-29.30%	NYSE Arca
SPDR RBB BARG HIGH YIELD BND	USD	109.20	-0.15%	-0.58%	-0.49%	0.24%	NYSE Arca
VANGUARD REAL ESTATE ETF	USD	103.22	1.41%	-1.54%	-6.44%	21.54%	NYSE Arca
GRAYSCALE BITCOIN TRUST BTC	USD	37.19	9.87%	8.65%	-2.75%	16.22%	OTC US

USA Treasury Bonds Yield Curve (%)



Source: Bloomberg

Capital Market Laboratory Coordinator: Economist Bruno Bellido
Collaboration: María Camarena, Alonso García, Adrian Paredes y Jairo Valverde
email: pulsohorsatil@ulima.edu.pe
facebook: www.facebook.com/pulsohorsatil

LIMA

Stocks

Ticker	Currency	Price	1D*	5D*	30D*	YTD*	Frequency	Volume (US\$)	Beta	Dividend Yield (%)	Price Earning	Market Cap. (M US\$)	Economic Sector*	Index Weight
▲ ALICORC1 PE**	S/.	5.17	0.35%	0.50%	0.02%	-8.98%	100.00%	196,130	1.01	16.15	10.64	1,067.79	Industrial	3.53%
▼ ATACOCB1 PE**	S/.	0.12	-4.96%	-4.96%	21.05%	-16.67%	70.00%	3,717	1.10	0.00	-	26.31	Mining	1.02%
▼ BACKUSH1 PE**	S/.	17.10	-2.29%	-5.00%	3.64%	-15.14%	80.00%	24,889	0.72	5.47	8.21	5,755.33	Industrial	0.82%
▲ BAP PE**	US\$	113.55	1.38%	3.55%	8.25%	-29.30%	100.00%	310,953	1.20	1.07	-	10,717.11	Diverse	5.82%
▲ BVN PE**	US\$	6.88	1.18%	-4.84%	-8.02%	-42.67%	100.00%	76,300	1.09	0.00	-	1,893.11	Mining	5.88%
▼ CASAGRC1 PE**	S/.	5.30	-1.49%	-0.93%	3.52%	11.58%	100.00%	25,378	1.28	14.11	4.83	108.09	Agricultural	1.31%
▼ BBVAC1 PE**	S/.	1.74	-0.57%	0.58%	2.35%	-16.98%	80.00%	57,610	1.15	2.51	17.73	2,847.19	Finance	2.85%
- CORAREH1 PE**	S/.	1.06	0.00%	-2.75%	2.91%	19.10%	100.00%	35,709	1.22	26.00	2.10	354.67	Industrial	1.72%
▼ CPACASC1 PE**	S/.	4.50	0.00%	-1.32%	1.58%	-15.09%	90.00%	70,225	0.69	17.56	32.14	505.69	Industrial	2.38%
▼ CVERDEC1 PE**	US\$	16.55	-3.78%	-7.07%	3.44%	-20.89%	100.00%	152,696	1.39	3.45	7.40	5,793.43	Mining	5.25%
▼ ENGEPEC1 PE**	S/.	1.85	0.00%	-1.60%	-5.37%	-21.94%	70.00%	3,495	0.68	0.00	8.15	1,073.00	Public Services	1.44%
- ENDISPC1**	S/.	3.92	0.00%	-6.67%	22.50%	-27.41%	45.00%	92,000	0.80	0.00	8.63	606.05	Public Services	0.98%
▼ FERREYC1 PE**	S/.	1.68	-0.59%	0.00%	-2.33%	-3.45%	100.00%	163,940	1.15	10.84	5.22	396.86	Diverse	4.90%
▼ AENZAC1 PE**	S/.	1.46	-2.67%	0.69%	2.82%	-16.09%	90.00%	149,369	0.94	0.00	-	308.21	Diverse	4.05%
▲ IFS PE**	US\$	22.40	0.90%	1.40%	0.00%	-27.60%	100.00%	8,377	1.26	3.44	6.39	2,586.03	Diverse	7.22%
▲ INRETC1 PE**	US\$	33.42	0.06%	1.74%	21.53%	-14.74%	100.00%	262,257	0.88	2.04	56.60	3,435.82	Diverse	5.28%
- LUSURC1 PE**	S/.	11.70	0.00%	-0.26%	10.38%	-54.12%	45.00%	3,578	#N/A N/A	0.00	12.68	1,379.40	Public Services	1.81%
▼ MINSUR1 PE**	S/.	2.65	-0.38%	-1.49%	1.92%	43.24%	90.00%	29,004	0.99	12.61	3.19	1,849.73	Mining	3.09%
▼ PML PE**	US\$	0.12	0.00%	12.75%	35.29%	8.49%	60.00%	17,701	1.20	0.00	-	30.40	Mining	2.12%
▼ RELAPAC1 PE**	S/.	0.17	-0.57%	0.00%	3.57%	152.17%	100.00%	165,080	0.98	0.00	3.10	350.47	Industrial	2.12%
▲ SCCO PE**	US\$	57.10	2.33%	-1.43%	-8.21%	-13.35%	85.00%	17,100	0.77	4.73	15.08	44,142.94	Mining	2.14%
- SIDERC1 PE**	S/.	1.19	0.00%	-1.65%	6.25%	10.39%	100.00%	1,133	0.90	0.00	3.11	201.68	Industrial	1.43%
▼ TV PE**	US\$	0.14	-0.71%	-4.79%	-5.44%	-5.44%	90.00%	4,591	1.20	0.00	-	137.48	Mining	2.93%
- UNACEMC1 PE**	S/.	1.46	0.00%	0.00%	5.04%	-5.81%	100.00%	128,528	1.25	3.15	11.53	642.68	Industrial	3.00%
▼ VOLGABC1 PE**	S/.	0.59	-1.67%	-3.28%	20.41%	13.46%	100.00%	327,563	1.80	0.00	-	582.33	Mining	5.90%
- NEXAPEC1 PE**	S/.	2.90	0.00%	0.00%	-0.34%	2.47%	45.00%	12,146	1.14	0.00	7.84	925.99	Mining	1.56%

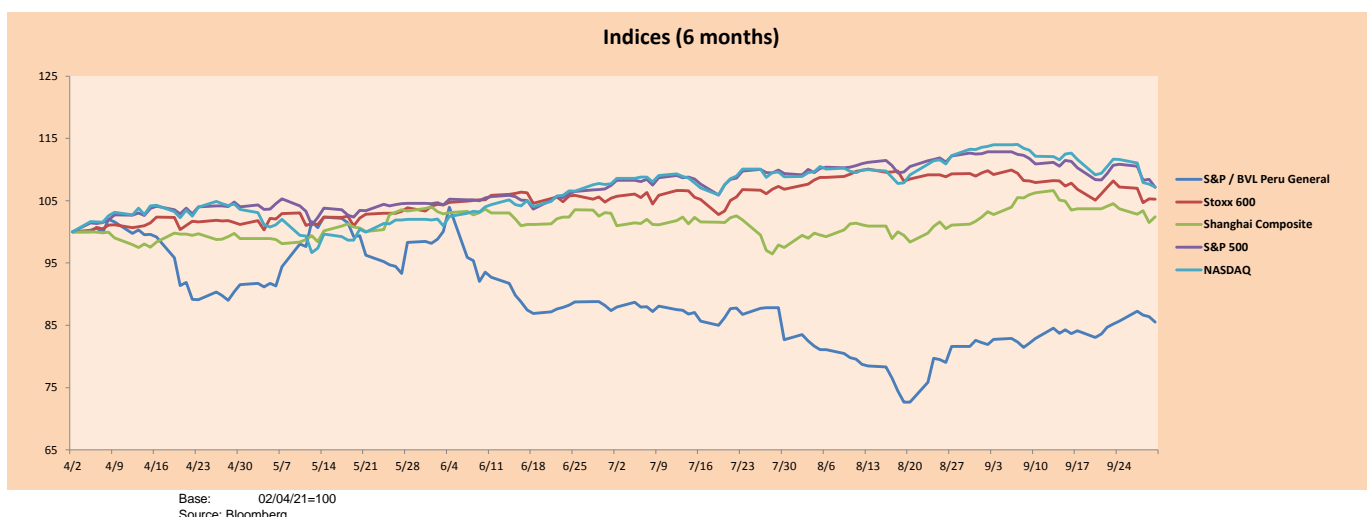
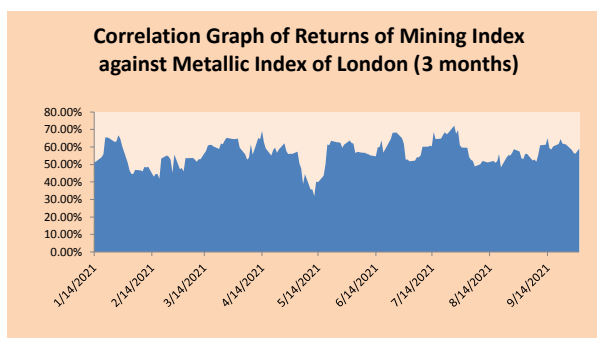
Quantity of shares: 26
 Source: Bloomberg, Economática
 * Bloomberg Industry Classification System
 ** PER is used in the stock market and original currency of the instrument
 *Legend: Variation 1D: 1 Day; 5D: 5 Days, 1M: 1 Month; YTD: Var.% 12/31/20 to date

Sectorial Indices

	Close	1D*	5D*	30D*	YTD*	Beta
▲ S&P/BVLMining	365.36	1.35%	-2.02%	-5.00%	-6.31%	0.77
▼ S&P/BVLConsumer	1,011.31	-0.57%	0.14%	12.96%	-7.10%	0.87
▼ S&P/BVLIndustrials	195.60	-0.47%	0.20%	3.33%	2.64%	0.97
▲ S&P/BVLFinancials	849.59	1.17%	3.69%	9.27%	-17.83%	1.13
▼ S&P/BVLConstruction	211.99	-0.42%	0.29%	5.93%	1.37%	0.89
- S&P/BVLPublicSvcs	512.25	0.00%	0.34%	10.43%	-16.59%	0.40
- S&P/BVLElectricUtil	500.09	0.00%	0.34%	10.43%	-16.58%	0.40

S&P/BVLConstructionTRPEN

*Legend: Variation 1D: 1 Day; 5D: 5 Days, 1M: 1 Month; YTD: Var.% 12/31/20 to date



Base: 02/04/21=100
 Source: Bloomberg

Capital Market Laboratory Coordinator: Economist Bruno Bellido
 Collaboration: Maria Camarena, Alonso García, Adrian Paredes y Jairo Valverde
 email: pulsobursatil@ulima.edu.pe
 facebook: www.facebook.com/pulsobursatil.ul

SOVEREIGN RATING

RISK RATINGS

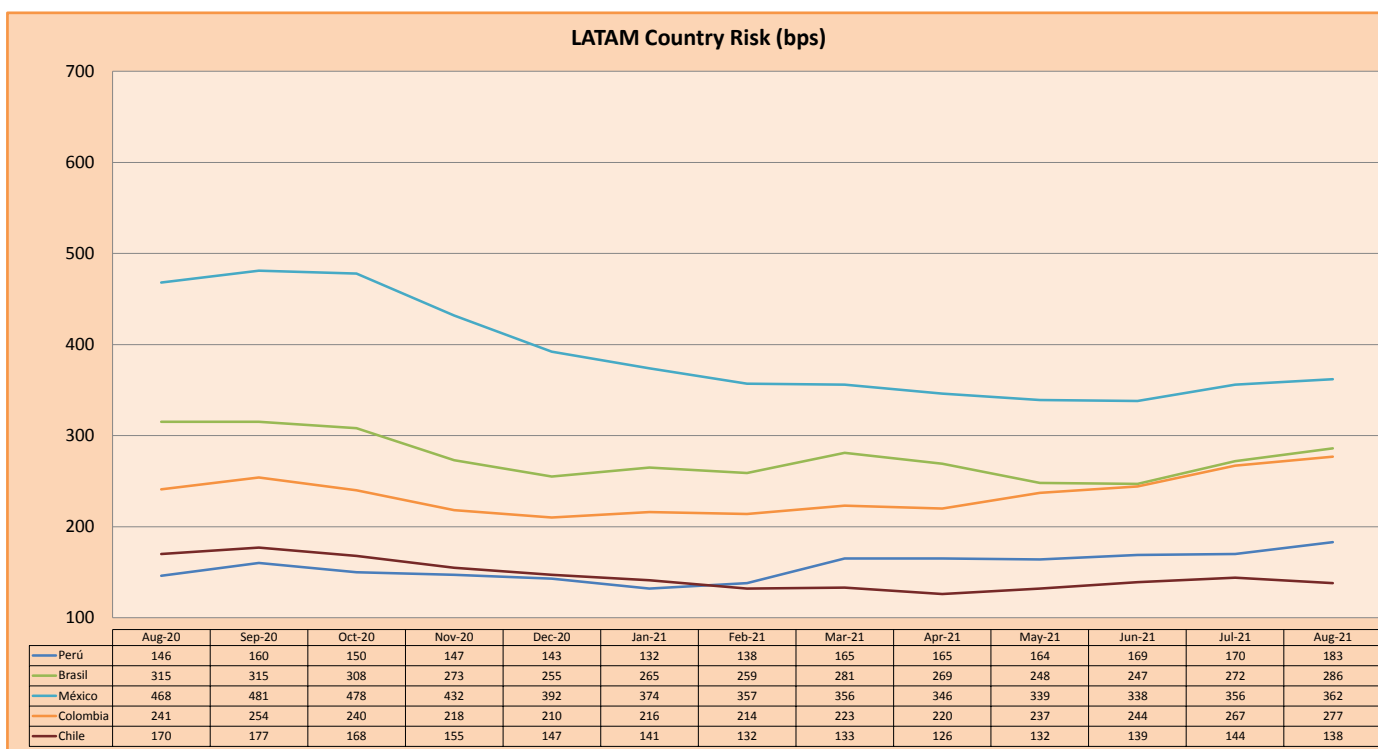
Moody's	S&P	Fitch		
Aaa	AAA	AAA	Prime	
Aa1	AA+	AA+	High credit quality	
Aa2	AA	AA		
Aa3	AA-	AA-		
A1	A+	A+	Medium-high grade, with low credit risk	
A2	A	A		
A3	A-	A-		
Baa1	BBB+	BBB+	Moderate Credit Risk	
Baa2	BBB	BBB		
Baa3	BBB-	BBB-		
Ba1	BB+	BB+	It has speculative elements and it is subject to substantial credit risk	
Ba2	BB	BB		
Ba3	BB-	BB-		
B1	B+	B+	It is considered speculative and it has high credit risk	
B2	B	B		
B3	B-	B-		
Caa1	CCC+	CCC	Bad credit conditions and it is subject to high credit risk	
Caa2	CCC			
Caa3	CCC-			
Ca	C	DDD	Very close to default or in default	
C	D			DD
				D

Source: Bloomberg

Latin America Credit Rating			
Clasificadora de riesgo			
Country	Moody's	Fitch	S&P
Peru	Baa1	BBB+	BBB+
México	Ba2	BB-	BB-
Venezuela	C	WD	NR
Brazil	Ba2	BB-	BB-
Colombia	Baa2	BB+	BB+
Chile	A1	A-	A
Argentine	Ca	WD	CCC+
Panama	Baa2	BBB-	BBB

Source: Bloomberg

LATAM Country Risk (bps)



Source: BCRP

Capital Market Laboratory Coordinator: Economist Bruno Bellido
Collaboration: Maria Camarena, Alonso García, Adrian Paredes y Jairo Valverde
email: pulsohorsatil@ulima.edu.pe
facebook: www.facebook.com/pulsohorsatil.ul