

# PULSO BURSÁTIL

FACULTAD DE CIENCIAS EMPRESARIALES Y ECONÓMICAS  
CARRERA DE ECONOMÍA  
LABORATORIO DE MERCADO DE CAPITALES

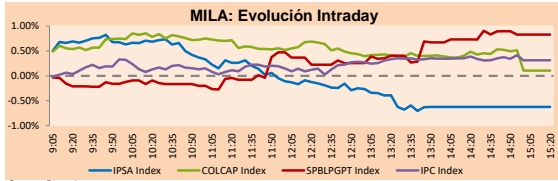


## MILA

Lima, October 5, 2021

Main Indexes	Close	1 D	5 D	1 M	YTD	Cap. Burs. (US\$ bill)
▼ IPSA (Chile)	4,226.08	-0.39%	-2.25%	-5.32%	1.17%	101.51
▼ IGPA (Chile)	21,103.65	-0.34%	-2.05%	-5.44%	0.46%	121.76
▲ COLSC (Colombia)	975.15	1.01%	1.62%	0.92%	-7.92%	4.54
▲ COLCAP (Colombia)	1,383.22	0.11%	2.42%	4.20%	-3.80%	81.55
▲ S&P/BVL (Perú)*	18,342.68	0.83%	-0.93%	3.76%	-11.91%	82.31
▲ S&P/BVL SEL (Perú)	483.73	0.65%	-0.54%	4.05%	-12.27%	74.69
▲ S&P/BVL LIMA 25	24,757.43	0.51%	-1.23%	3.89%	-1.75%	81.26
▲ IPC (México)	51,056.94	0.38%	0.26%	-1.50%	15.86%	305.64
▲ S&P MILA 40	455.01	-0.23%	-0.79%	-4.30%	-14.89%	6,286.03

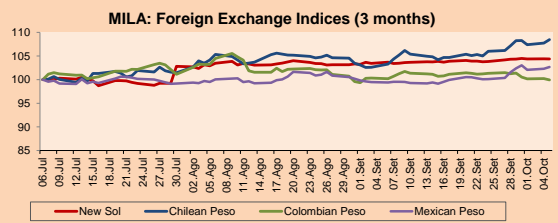
\*Legend: Variation 1D: 1 day; 5D: 5 days; 1M: 1 Month; YTD: Var% 12/31/20 to date



Source: Bloomberg

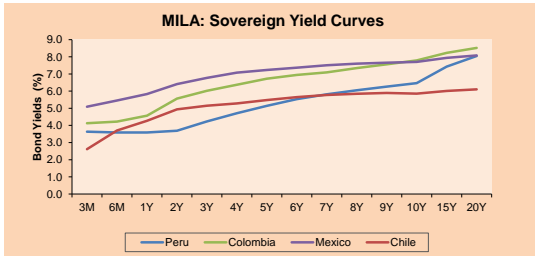
Currency	Price	1D*	5D*	30 D*	YTD*
▼ Sol (PEN)	4,130.00	-0.02%	0.02%	0.89%	14.15%
▲ Chilean Peso (CLP)	811.45	0.67%	1.21%	5.69%	14.00%
▼ Colombian Peso (COP)	3,785.05	-0.27%	-1.30%	-0.41%	10.36%
▲ Mexican Peso (MXN)	20.57	0.37%	1.08%	3.21%	3.28%

\*Legend: Variation 1D: 1 day; 5D: 5 days; 1M: 1 Month; YTD: Var% 12/31/20 to date



Base: 06/07/21=100  
Source: Bloomberg

Fixed Income	Currency	Price	Bid Yield (%)	Ask Yield (%)	Duration
PERU 7.35 07/21/25	USD	120.961	1.69	1.56	3.36
PERU 4.125 08/25/27	USD	110.532	2.26	2.16	5.29
PERU 8.75 11/21/33	USD	154.296	3.32	3.24	8.40
PERU 6.55 03/14/37	USD	135.019	3.61	3.55	10.23
PERU 5.625 11/18/2050	USD	135.016	3.67	3.65	16.29
CHILE 2.25 10/30/22	USD	101.955	0.62	0.19	1.05
CHILE 3.125 01/21/26	USD	106.958	1.50	1.39	4.03
CHILE 3.625 10/30/42	USD	104.138	3.36	3.34	14.94
COLOM 11.85 03/09/28	USD	154.324	2.78	2.44	4.99
COLOM 10.375 01/28/33	USD	146.302	5.02	4.93	7.50
COLOM 7.375 09/18/37	USD	123.402	5.23	5.17	10.12
COLOM 6.125 01/18/41	USD	110.554	5.28	5.22	11.69
MEX 4 10/02/23	USD	110.554	5.278	5.217	11.69
MEX5.55 01/45	USD	117.109	4.39	4.35	13.90



Source: Bloomberg

## Equity

Largest gains	Exchange	Currency	Price	▲%
ENTEL	Chile	CLP	3350.00	5.68
GRUPO TELEV-CPO	Mexico	MXN	47.22	3.92
SOQUIMICH-B	Chile	CLP	43928.00	3.20
CREDICORP LTD	Peru	USD	113.33	2.56
SURAMERICANA	Colombia	COP	22320.00	2.39

Per Turnover	Exchange	Amount (US\$)
GRUPO F BANORT-O	Mexico	45,989,420
WALMART DE MEXIC	Mexico	37,363,386
AMERICA MOVIL-L	Mexico	31,893,237
GRUMA SAB-B	Mexico	28,864,633
CEMEX SAB-CPO	Mexico	28,327,557

Largest losses	Exchange	Currency	Price	▼%
SMU SA	Chile	CLP	77.51	-3.93
CAP	Chile	CLP	7412	-3.82
FALABELLA SA	Chile	CLP	2690	-3.69
CMPC	Chile	CLP	1438.9	-3.10
KIMBERLY-CLA M-A	Mexico	MXN	32.55	-3.07

Per Volume	Exchange	Volume
ITAU CORPBANCA	Chile	754,450,658
BANCO DE CHILE	Chile	161,319,446
BANCO SANTANDER	Chile	142,597,637
ENEL AMERICAS SA	Chile	49,846,901
ENEL CHILE SA	Chile	42,154,598

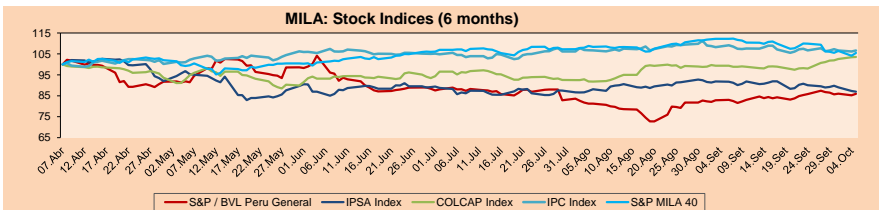
## MILA

Peru: The BVL General Index ended today's session with a positive result of +0.83%. The index maintains a negative annual cumulative trend of -11.91% in local currency, while the dollar-adjusted performance declined to -22.83%. Next, the S&P / BVL Peru SEL varied by +0.65% while the S&P / BVL LIMA 25 by +0.51%. The spot PEN reached 5 / 4,130. Headline: Peru's country risk dropped two basis points and closed at 1.51 percentage points

Chile: The IPSA index ended the day with a negative return of -0.39%. The most negatively affected sectors of the day were Non-Basic Consumer Products (-3.55%) and Real Estate (-1.64%). The most performing stocks were SMU SA (-3.93%) and CAP SA (-3.82%). Headline: Chilean stock market uncouples from the rebound of global markets and falls pending the fourth pullback

Colombia: The COLCAP index ended the day with a positive return of +0.11%. The most benefited sectors of the day were Non-Basic Consumer Products (+0.86%) and Financials (+0.53%). The best performing stocks were Canacol Energy LTD (+4.64%) and Grupo de Inversiones Suramericanas (+2.39%). Headline: In September, Colombian coffee production grows 22%

Mexico: The IPC index closed the day with a positive return of +0.38%. The sectors that benefited the most during the day were Non-Basic Consumer Products (+1.43%) and Industrials (+0.83%). The best performing stocks were Grupo Televisa SA (+3.92%) and El Puerto de Liverpool SAB de CV (+2.76%). Headline: Analysts slightly improve GDP forecast for 2021, but estimate higher inflation. Translated with www.DeepL.com/Translator (free version)

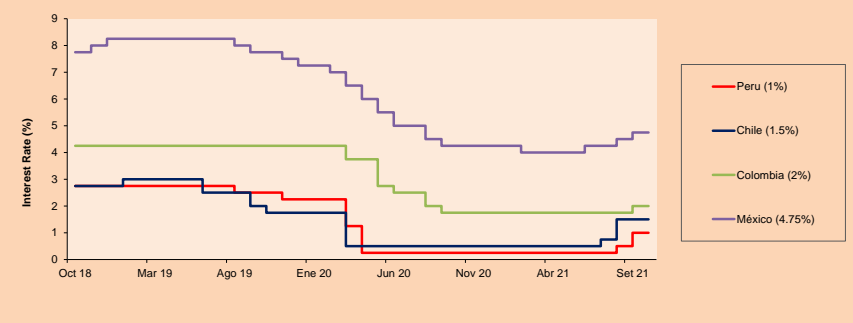


Base: 08/04/21=100  
Source: Bloomberg

## ETFs

ETFs	Curr.	Close	1D	5D	30 D	YTD	Exchange
▲ iShares MSCI All Peru Caped Index Fund	USD	26.35	0.08%	-1.13%	-1.57%	-24.02%	NYSE Arca
▼ iShares MSCI All Chile Caped Index Fund	USD	25.42	-1.28%	-2.61%	-11.09%	-15.86%	Cboe BZX
▲ Global X MSCI Colombia	USD	10.586	0.82%	3.98%	3.13%	-6.81%	NYSE Arca
▲ iShares MSCI Mexico Capped	USD	48.13	0.06%	-0.89%	-4.35%	11.96%	NYSE Arca
▲ iShares MSCI Emerging Markets	USD	49.94	0.71%	-1.01%	-5.99%	-3.35%	NYSE Arca
▲ Vanguard FTSE Emerging Markets	USD	49.82	0.95%	-0.50%	-5.80%	-0.58%	NYSE Arca
▲ iShares Core MSCI Emercina Markets	USD	61.32	0.72%	-0.86%	-5.56%	-1.16%	NYSE Arca
▲ iShares JP Morgan Emerging Markets Bonds	USD	62.39	0.45%	-0.24%	-2.97%	2.14%	Cboe BZX
▲ Morgan Stanley Emerging Markets Domestic	USD	5.91	1.03%	-0.51%	-5.29%	-6.04%	New York

## MILA: Policy Rate



Source: Bloomberg

Capital Market Laboratory Coordinator: Economist Bruno Bellido  
Collaboration: Alfonso Garcia, Adrian Paredes, Miguel Solimano y Jairo Valverde  
email: pulsobursatil@ulima.edu.pe  
facebook: www.facebook.com/pulsobursatil

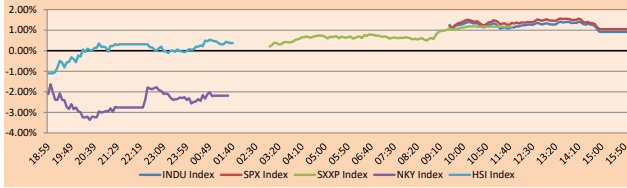
The content of this document is just for informational purposes. The information and opinions expressed should not be considered as recommendations for future decisions. Under any circumstances, the Capital Market Laboratory of University of Lima will be responsible for the use of the statements in this document.

## WORLD

Main Indices	Close	1 D*	5 D*	1 M*	YTD*	Market Cap. (US\$ Mill.)
▲ Dow Jones (USA)	34,314.67	0.92%	0.04%	-2.98%	12.12%	10,533,410
▲ Standard & Poor's 500 (EEUU)	4,345.72	1.05%	-0.16%	-4.18%	15.70%	38,081,758
▲ NASDAQ Composite (USA)	14,433.83	1.25%	-0.78%	-6.05%	11.99%	24,104,989
▲ Stoxx EUROPE 600 (Europe)	456.03	1.17%	0.81%	-4.03%	14.28%	10,955,815
▲ DAX (Germany)	15,194.49	1.05%	-0.35%	-4.63%	10.76%	1,410,568
▲ FTSE 100 (United Kingdom)	7,077.10	0.94%	0.70%	-1.53%	9.54%	1,500,396
▲ CAC 40 (France)	6,576.28	1.52%	1.07%	-2.48%	18.46%	1,853,630
▲ IBEX 35 (Spain)	8,927.40	1.54%	1.80%	0.51%	10.57%	512,024
▼ MSCI AC Asia Pacific Index	192.52	-0.76%	-3.60%	-6.08%	-3.70%	25,534,464
▲ HANG SENG (Hong Kong)	24,104.15	0.28%	-0.43%	-7.87%	-11.48%	3,671,129
▲ SHANGHAI SE Comp. (China)	3,568.17	0.90%	-2.03%	0.03%	2.74%	7,169,135
▼ NIKKEI 225 (Japan)	27,822.12	-2.19%	-7.82%	-8.20%	1.38%	4,125,326
▼ S&P / ASX 200 (Australia)	7,248.36	-0.42%	-0.37%	-3.32%	10.50%	1,699,447
▼ KOSPI (South Korea)	2,962.17	0.38%	0.26%	-7.53%	3.09%	1,745,183

\*Legend: Variation 1D: 1 Day; 5D: 5 Days; 1M: 1 Month; YTD: Var. % 12/31/20 to date

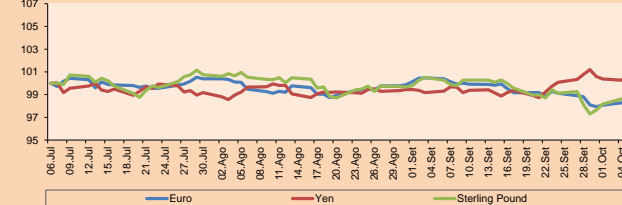
### Global Markets: Intraday Evolution (var %)



Currency	Price	1 D*	5 D*	1 M*	YTD*
▼ Euro	1,1598	-0.20%	-0.73%	-2.37%	-5.06%
▲ Yen	111,4600	0.48%	-0.04%	1.60%	7.95%
▲ Sterling Pound	1,3629	0.14%	0.69%	-1.74%	-0.30%
- Yuan	6,4448	0.00%	-0.24%	-0.16%	-1.26%
▼ Hong Kong Dollar	7,7858	-0.02%	0.04%	0.18%	0.42%
▲ Brazilian Real	5,4761	0.39%	0.88%	5.46%	5.34%
▲ Argentine Peso	98,8979	0.04%	0.24%	1.05%	17.53%

\*Legend: Variation 1D: 1 Day; 5D: 5 Days; 1M: 1 Month; YTD: Var. % 12/31/20 to date

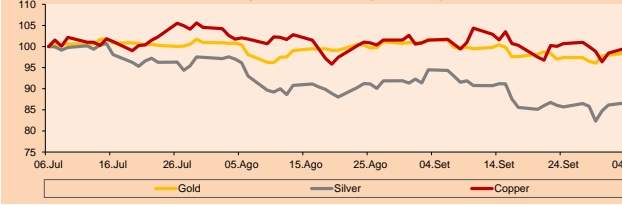
### Foreign Exchange Indices (3 months)



Commodities	Close	1 D*	5 D*	1 M*	YTD*
▼ Oro (US\$ Oz. T) (LME)	1,760.18	-0.53%	1.51%	-3.70%	-7.28%
▼ Plata (US\$ Oz. T) (LME)	22.63	-0.22%	0.79%	-8.43%	-14.28%
▲ Cobre (US\$ TM) (LME)	9,177.00	-0.87%	-1.12%	-2.58%	18.43%
▲ Zinc (US\$ TM) (LME)	3,034.21	1.03%	-1.09%	1.62%	11.17%
▲ Petróleo WTI (US\$ Barril) (NYM)	78.93	1.69%	4.83%	14.28%	64.95%
▲ Estano (US\$ TM) (LME)	36,299.00	1.85%	-2.10%	8.76%	76.69%
▲ Plomo (US\$ TM) (LME)	2,194.50	0.34%	0.13%	-8.54%	11.07%
▲ Azúcar #11 (US\$ Libra) (NYB-ICE)	19.85	0.91%	0.05%	-2.31%	39.10%
▲ Gasca (US\$ TM) (NYB-ICE)	2,785.00	0.11%	7.83%	3.81%	10.11%
▼ Café Arábica (US\$ TM) (NYB-ICE)	191.90	-4.22%	-3.37%	-0.57%	42.36%

\*Legend: Variación 1D: 1 Día; 5D: 5 Días; 1M: 1 Mes; YTD: Var. % 31/12/20 a la fecha

### Principal Metals Index (3 months)



## Equity

Germany (Stocks from DAX Index)

Largest gains	Curr.	Price	▲%	Exchange	Largest losses	Curr.	Price	▼%	Exchange
HFG GY	EUR	81.96	3.64	Xetra	BAYN GY	EUR	46.165	-0.95	Xetra
DBK GY	EUR	11.042	3.58	Xetra	FRE GY	EUR	40.38	-0.82	Xetra
LIN GY	EUR	257.7	2.24	Xetra	HEI GY	EUR	63.58	-0.81	Xetra
EOAN GY	EUR	11.07	2.03	Xetra	FME GY	EUR	60.32	-0.59	Xetra

Europe (Stocks from STOXX EUROPE 600)

Largest gains	Curr.	Price	▲%	Exchange	Largest losses	Curr.	Price	▼%	Exchange
BBVA SQ	EUR	6	6.50	Soc.BoI SIBE	THG LN	Gbp	418.4	-4.91	Londres
BANB SE	CHF	762	5.98	SIX Swiss Ex	RAA GY	EUR	747.6	-4.84	Xetra
VACN SE	CHF	379.2	5.86	SIX Swiss Ex	ORP FP	EUR	95.54	-4.46	EN Paris
ROSE SE	CHF	388	5.72	SIX Swiss Ex	KINDSDB SS	SEK	123.2	-3.37	Stockholm

## Global Overview:

### United States:

The US market closes with positive returns, due to the rally in technology stocks after their sell-off the day before. In turn, the ISM Services index for September had a positive surprise of 61.9 against the 59.9 expected, which had an impact on cyclical stocks. The DOW JONES + 0.92% closed with gains and with 26 of its 30 values higher thanks to a barrel of oil reaching a maximum of \$ 79.48 per barrel. On the other hand, the best performing stock was Goldman Sachs + 3.12% after Citigroup hired one of its bankers for a global infrastructure business. Meanwhile, the S&P 500 + 1.05% closed the day higher, driven by the Finance + 1.77%, Communication Services + 1.59% and Information Technology + 1.46% sectors. Finally, the NASDAQ + 1.25% closed the day in positive territory driven by cyclical stocks. The best performing stocks were Bit Digital Inc + 36.17% and Marine Petroleum Trust + 22.11%. Thus, DOW JONES + 0.92%; S&P 500 + 1.05%; NASDAQ + 1.25% ended the day with positive results.

### Europe:

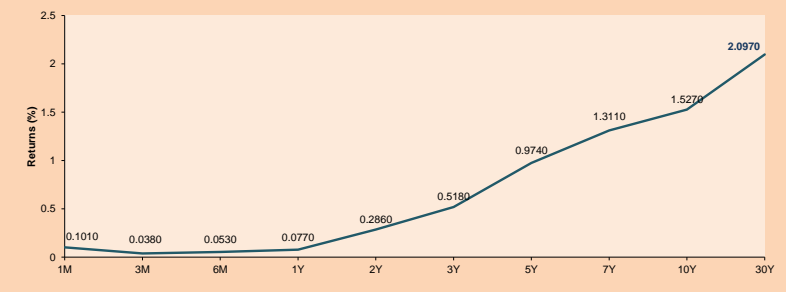
Major European indexes ended the session with positive returns, reaching almost three-month highs, thanks to the banking and technology sectors. Banks rose by +3.5%, while technology companies by +2.2%. The pan-European STOXX 600 index ended with gains, finding support in Greggs, which rose by +11.10%. The bakery chain revealed that its revenues grew +3.5% compared to its pre-pandemic levels, furthermore, it stated that its full year results will exceed previous expectations. The UK market, reflected in the FTSE 100, finished higher as oil prices reached three-year highs. OPEC's decision not to raise production volumes boosted oil prices, which helped the index's heavyweights, BP and Shell, rise by +1.45% and +1.2%, respectively. Meanwhile, the German DAX index closed in positive territory on gains in the technology and distribution sectors. Outstanding stocks were Infineon Technologies with +4.63%, HelloFresh with +3.64%, and Deutsche Bank with +3.56%. The French market finished higher thanks to support from the general financials, and food and pharmaceuticals sectors. The most relevant stocks were BNP Paribas SA with +4.34%, and Crédit Agricole, with +5.67%, where the latter started a share repurchase program for 500 million euros. Thus, FTSE 100 +0.94%; CAC 40 +1.52%; STOXX 600 +1.17% all ended at positive levels.

### Asia:

The main Asian indexes closed with returns mostly lower, due to the sharp fall in technology the previous day, inflation fears and concerns about the situation of Evergrande. Despite this, Hong Kong stocks ended higher, outpacing concerns about the real estate cloud in China thanks to a rise in crude prices. It should be noted that the Chinese market is on a long holiday. On the other hand, Japanese stocks ended at a month low as rising oil prices concerns about rising inflation and the economic slowdown. Also, the new prime minister's proposal to increase taxes on capital gains affected confidence. In the same way, the KOSPI of South Korea registered 7-month lows, due to the risks of default on the US debt and the new trade tensions between the US and China. Finally, the Australian index ended lower, after the massive abandonment of technology stocks yesterday on Wall Street. Thus, NIKKEI -2.19%; HANG SENG + 0.28%; S & P / ASX 200 -0.42%; KOSPI +0.38% finished with mixed returns.

ETFs	Curr.	Close	1D	5D	30 D	YTD	Exchange
SPDR S&P 500 ETF TRUST	USD	433.10	1.04%	-0.14%	-4.41%	15.84%	NYSE Arca
ISHARES MSCI EMERGING MARKET	USD	49.94	0.71%	-1.01%	-5.99%	-3.35%	NYSE Arca
ISHARES IBOXX HIGH YLD CORP	USD	87.06	-0.05%	-0.42%	-1.08%	-0.27%	NYSE Arca
FINANCIAL SELECT SECTOR SPDR	USD	38.56	1.96%	1.21%	1.29%	30.80%	NYSE Arca
VANECK GOLD MINERS ETF	USD	29.78	0.37%	1.40%	-10.52%	-17.32%	NYSE Arca
ISHARES RUSSELL 2000 ETF	USD	221.02	0.35%	-0.12%	-3.04%	12.73%	NYSE Arca
SPDR GOLD SHARES	USD	164.59	-0.47%	1.57%	-3.78%	-7.72%	NYSE Arca
ISHARES 20+ YEAR TREASURY BO	USD	143.58	-0.97%	-0.35%	-3.10%	-8.97%	NASDAQ GM
INVESCO QQQ TRUST SERIES 1	USD	357.38	1.35%	-0.69%	-6.34%	13.91%	NASDAQ GM
ISHARES BIOTECHNOLOGY ETF	USD	155.79	0.07%	-3.91%	-11.39%	2.84%	NASDAQ GM
ENERGY SELECT SECTOR SPDR	USD	55.04	0.58%	4.07%	13.20%	45.22%	NYSE Arca
PROSHARES ULTRA VIX ST FUTUR	USD	22.99	-4.89%	-3.93%	8.24%	-78.41%	Close BZX
UNITED STATES OIL FUND LP	USD	55.63	2.09%	6.16%	14.32%	68.52%	NYSE Arca
ISHARES MSCI BRAZIL ETF	USD	31.86	-0.59%	-0.84%	-11.13%	-14.05%	NYSE Arca
SPDR S&P OIL & GAS EXP & PR	USD	102.37	0.60%	5.16%	21.12%	74.99%	NYSE Arca
UTILITIES SELECT SECTOR SPDR	USD	64.60	-0.25%	1.64%	-7.04%	3.03%	NYSE Arca
ISHARES US REAL ESTATE ETF	USD	103.03	-0.57%	-0.18%	-7.41%	20.29%	NYSE Arca
SPDR S&P BIOTECH ETF	USD	123.60	0.31%	-3.24%	-7.89%	-12.20%	NYSE Arca
ISHARES IBOXX INVESTMENT GRA	USD	132.97	-0.41%	-0.33%	-1.50%	-3.74%	NYSE Arca
ISHARES JP MORGAN USD EMERG	USD	109.23	0.06%	-0.68%	-3.49%	-5.76%	NASDAQ GM
REAL ESTATE SELECT SECT SPDR	USD	44.63	-0.78%	-0.56%	-8.41%	22.07%	NYSE Arca
ISHARES CHINA LARGE-CAP ETF	USD	38.19	1.41%	-1.67%	-7.91%	-17.75%	NYSE Arca
CONSUMER STAPLES SPDR	USD	69.15	0.51%	-0.46%	-5.05%	2.52%	NYSE Arca
VANECK JUNIOR GOLD MINERS	USD	39.18	1.08%	1.74%	-10.91%	-27.77%	NYSE Arca
SPDR RBC BARG HIGH YIELD BND	USD	108.74	-0.08%	-0.49%	-1.06%	-0.18%	NYSE Arca
VANGUARD REAL ESTATE ETF	USD	102.53	-0.60%	-0.18%	-7.59%	20.72%	NYSE Arca
GRAYSCALE BITCOIN TRUST BTC	USD	40.44	3.35%	23.56%	-0.71%	26.38%	OTC US

### USA Treasury Bonds Yield Curve (%)



Source: Bloomberg

Capital Market Laboratory Coordinator: Economist Bruno Bellido  
Collaboration: Alonso García, Adrian Paredes, Miguel Solimano y Jairo Valverde  
email: pulsoBursatil@ulima.edu.pe  
facebook: www.facebook.com/pulsoBursatil

# LIMA

## Stocks

Ticker	Currency	Price	1D*	5D*	30D*	YTD*	Frequency	Volume (US\$)	Beta	Dividend Yield (%)	Price Earning	Market Cap. (M US\$)	Economic Sector*	Index Weight
▲ ALICORC1 PE**	S/.	5.21	1.01%	1.62%	0.92%	-7.92%	100.00%	9,661	1.01	16.03	10.72	1,076.07	Industrial	3.53%
▲ ATACOBC1 PE**	S/.	0.12	0.00%	-4.96%	18.56%	-16.67%	65.00%	50	1.10	0.00	-	26.31	Mining	1.02%
▼ BACKUS1 PE**	S/.	17.05	-0.29%	-2.57%	0.89%	-15.38%	80.00%	2,322	0.72	5.48	8.18	5,748.85	Industrial	0.82%
▲ BAP PE**	US\$	113.33	2.56%	-0.59%	8.51%	-29.43%	100.00%	104,301	1.20	1.08	-	10,696.35	Diverse	5.82%
▼ BVN PE**	US\$	6.79	-0.44%	-3.41%	-9.47%	-43.42%	100.00%	222,443	1.09	0.00	-	1,868.35	Mining	5.88%
- CASAGRC1 PE**	S/.	5.30	0.00%	-1.12%	3.92%	-11.58%	100.00%	3,489	1.28	14.11	4.83	108.10	Agricultural	1.31%
- BBVAC1 PE**	S/.	1.75	0.00%	0.00%	2.94%	-16.51%	80.00%	4,025	1.15	2.49	17.83	2,863.76	Finance	2.85%
▲ CORARE1 PE**	S/.	1.08	2.86%	-0.92%	1.89%	21.35%	95.00%	1,308	1.22	25.52	2.14	357.86	Industrial	1.72%
▼ CPACASC1 PE**	S/.	4.47	-0.67%	-0.67%	-0.67%	-15.66%	85.00%	8,039	0.69	17.67	31.93	502.36	Industrial	2.38%
- CVERDEC1 PE**	US\$	16.50	0.00%	-5.71%	2.48%	-21.13%	100.00%	46,633	1.38	3.46	7.38	5,775.92	Mining	5.25%
- ENGEPEC1 PE**	S/.	1.85	0.00%	-0.54%	-7.50%	-21.94%	60.00%	69	0.68	0.00	8.15	1,073.08	Public Services	1.44%
- ENDISPC1**	S/.	3.92	0.00%	-6.67%	22.50%	-27.41%	45.00%	2,229	0.80	0.00	8.63	606.09	Public Services	0.98%
▲ FERREYC1 PE**	S/.	1.70	0.59%	-0.58%	1.80%	-2.30%	100.00%	37,122	1.15	10.71	5.29	401.61	Diverse	4.90%
- AENZAC1 PE**	S/.	1.46	0.00%	0.69%	4.29%	-16.09%	90.00%	3,535	0.94	0.00	-	308.23	Diverse	4.05%
▲ IFS PE**	US\$	23.45	3.08%	4.59%	9.07%	-24.21%	95.00%	71,900	1.26	3.28	6.68	2,707.25	Diverse	7.22%
- INRETC1 PE**	US\$	33.42	0.00%	1.27%	21.53%	-14.74%	100.00%	44,230	0.88	2.04	56.58	3,435.82	Diverse	5.28%
- LUSURC1 PE**	S/.	11.70	0.00%	-0.26%	10.90%	-54.12%	45.00%	3,578	#N/A N/A	0.00	12.68	1,379.50	Public Services	1.81%
▼ MINSUR1 PE**	S/.	2.60	-1.89%	-2.26%	0.00%	40.54%	80.00%	47,719	0.99	12.85	3.13	1,814.97	Mining	3.09%
- PML PE**	US\$	0.12	0.00%	4.55%	35.29%	8.49%	65.00%	4,521	1.21	0.00	-	30.40	Mining	2.12%
- RELAPAC1 PE**	S/.	0.18	0.00%	-0.57%	3.55%	153.62%	100.00%	32,700	0.98	0.00	3.12	352.51	Industrial	2.12%
- SCCO PE**	US\$	56.45	0.00%	-4.34%	-9.97%	-14.34%	85.00%	28,235	0.77	0.00	14.91	43,640.44	Mining	2.14%
▼ SIDERC1 PE**	S/.	1.16	-0.85%	-3.33%	7.41%	7.61%	95.00%	7,773	0.90	30.52	3.03	196.61	Industrial	1.43%
- TV PE**	US\$	0.14	0.00%	-2.11%	-5.44%	-5.44%	85.00%	832	1.20	0.00	-	137.48	Mining	2.93%
- UNACEMC1 PE**	S/.	1.46	0.00%	0.00%	4.29%	-5.81%	100.00%	88,252	1.25	3.15	11.53	642.73	Industrial	3.00%
- VOLCABC1 PE**	S/.	0.58	0.00%	-4.92%	11.54%	11.54%	100.00%	9,534	1.80	0.00	-	572.50	Mining	5.90%
- NEXAPEC1 PE**	S/.	2.90	0.00%	0.00%	-0.34%	2.47%	45.00%	1,545	1.14	0.00	7.85	926.68	Mining	1.56%

Quantity of shares: 26  
Source: Bloomberg, Económática  
\* Bloomberg Industry Classification System  
\*\* PER is used in the stock market and original currency of the instrument  
\*Legend: Variation 1D: 1 Day; 5D: 5 Days; 1M: 1 Month; YTD: Var.% 12/31/20 to date

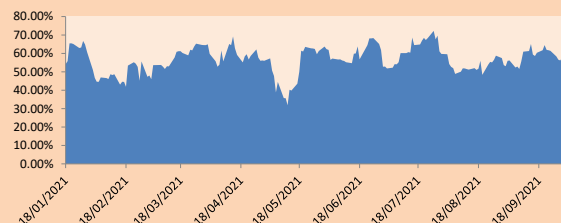
### Sectorial Indices

	Close	1D*	5D*	30D*	YTD*	Beta
▼ S&P/BVLMining	361.19	-0.21%	-3.98%	-7.00%	-7.38%	0.77
▲ S&P/BVLConsumer	1,013.75	0.58%	0.37%	10.77%	-6.88%	0.87
▲ S&P/BVLIndustrials	196.22	0.12%	-0.05%	4.30%	2.97%	0.97
▲ S&P/BVLFinancials	851.78	2.41%	-0.02%	10.19%	-17.62%	1.14
▼ S&P/BVLConstruction	211.92	-0.07%	0.17%	5.48%	1.34%	0.89
- S&P/BVLPublicSvcs	512.25	0.00%	0.66%	3.41%	-16.59%	0.40
- S&P/BVLElectricUtil	500.09	0.00%	0.66%	3.41%	-16.58%	0.39

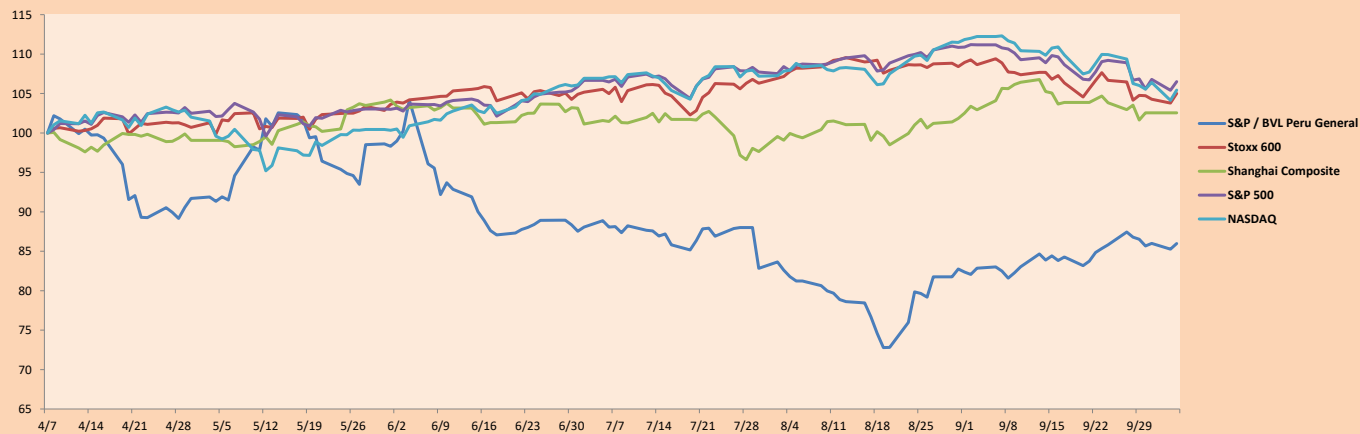
S&P/BVLConstructionTRPEN

\*Legend: Variation 1D: 1 Day; 5D: 5 Days; 1M: 1 Month; YTD: Var.% 12/31/20 to date

Correlation Graph of Returns of Mining Index against Metallic Index of London (3 months)



Indices (6 months)



Base: 07/04/21=100  
Source: Bloomberg

Capital Market Laboratory Coordinator: Economist Bruno Bellido  
Collaboration: Alonso García, Adrian Paredes, Miguel Solimano y Jairo Valverde  
email: pulsobursatil@ulima.edu.pe  
facebook: www.facebook.com/pulsobursatil.ul

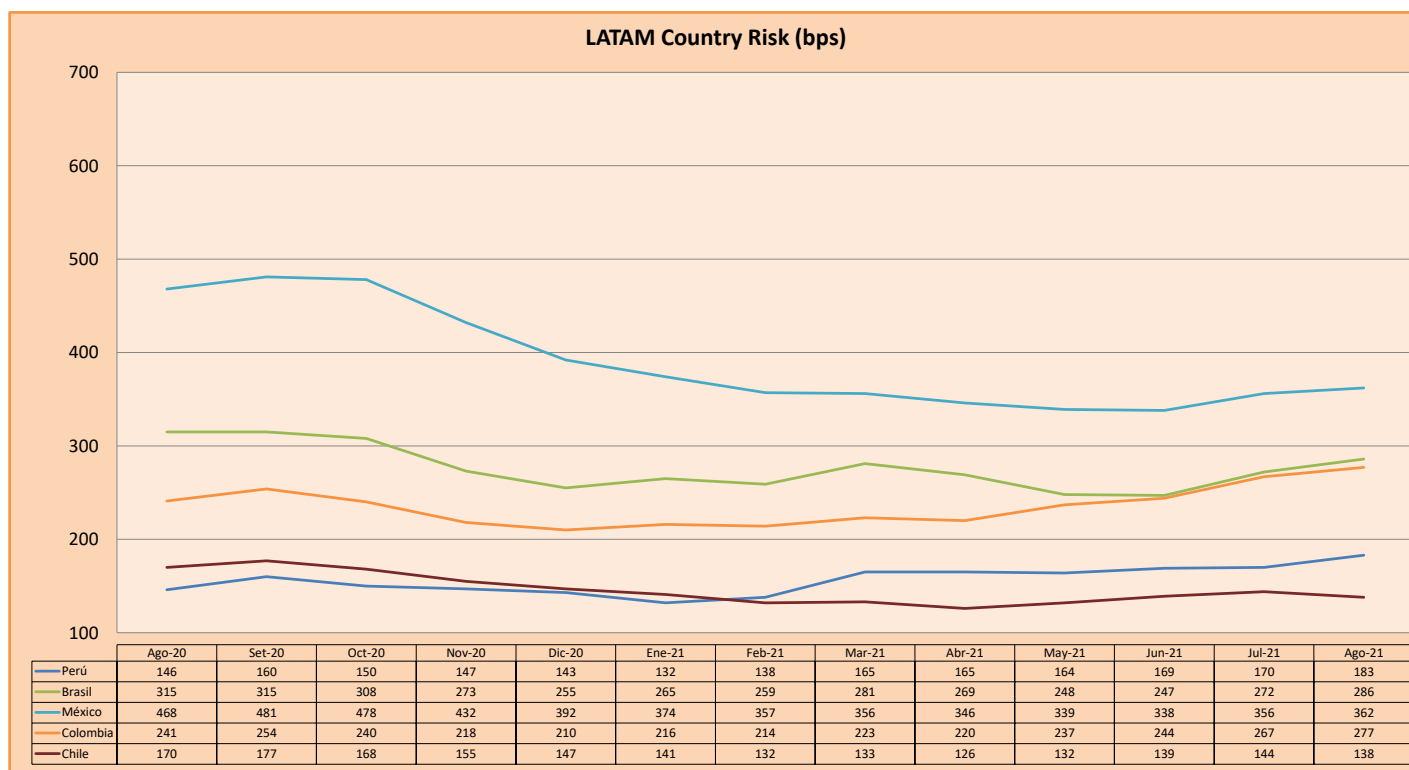
## SOVEREIGN RATING

RISK RATINGS			
Moody's	S&P	Fitch	
Aaa	AAA	AAA	Prime
Aa1	AA+	AA+	High credit quality
Aa2	AA	AA	
Aa3	AA-	AA-	
A1	A+	A+	Medium-high grade, with low credit risk
A2	A	A	
A3	A-	A-	
Baa1	BBB+	BBB+	Moderate Credit Risk
Baa2	BBB	BBB	
Baa3	BBB-	BBB-	
Ba1	BB+	BB+	It has speculative elements and it is subject to substantial credit risk
Ba2	BB	BB	
Ba3	BB-	BB-	
B1	B+	B+	It is considered speculative and it has high credit risk
B2	B	B	
B3	B-	B-	
Caa1	CCC+		Bad credit conditions and it is subject to high credit risk
Caa2	CCC		
Caa3	CCC-	CCC	
Ca	CC		Very close to default or in default
	C		
C	D	DDD DD D	

Source: Bloomberg

Latin America Credit Rating			
Clasificadora de riesgo			
Country	Moody's	Fitch	S&P
Peru	Baa1	BBB+	BBB+
México	Ba2	BB-	BB-
Venezuela	C	WD	NR
Brazil	Ba2	BB-	BB-
Colombia	Baa2	BB+	BB+
Chile	A1	A-	A
Argentina	Ca	WD	CCC+
Panama	Baa2	BBB-	BBB

Source: Bloomberg



Source: BCRP

Capital Market Laboratory Coordinator: Economist Bruno Bellido  
Collaboration: Alonso García, Adrian Paredes, Miguel Solimano y Jairo Valverde  
email: [pulsobursatil@ulima.edu.pe](mailto:pulsobursatil@ulima.edu.pe)  
facebook: [www.facebook.com/pulsobursatil.ul](https://www.facebook.com/pulsobursatil.ul)