

PULSO BURSÁTIL

FACULTAD DE CIENCIAS EMPRESARIALES Y ECONÓMICAS
CARRERA DE ECONOMÍA
LABORATORIO DE MERCADO DE CAPITALES

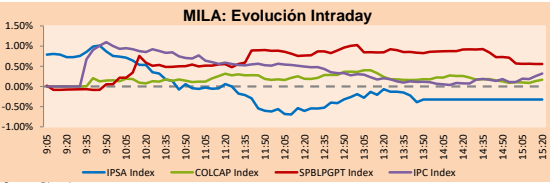


MILA

Lima, november 8, 2021

Main Indexes	Close	1 D	5 D	1 M	YTD	Cap. Burs. (US\$ bill)
▼ IPSA (Chile)	4,363.33	-0.57%	6.63%	5.25%	4.46%	101.12
▼ IGPA (Chile)	21,952.96	-0.39%	6.77%	6.09%	4.50%	121.37
▲ COLSC (Colombia)	983.62	0.51%	0.34%	-0.71%	-7.12%	4.51
▲ COLCAP (Colombia)	1,394.23	0.41%	0.01%	-0.48%	-3.04%	80.71
▲ S&P/BVL (Perú)*	20,530.94	0.54%	-1.00%	5.96%	-1.40%	93.59
▲ S&P/BVL SEL (Perú)	545.19	0.25%	-1.21%	7.66%	-1.13%	84.94
▲ S&P/BVL LIMA 25	28,513.06	0.06%	-0.98%	9.80%	13.15%	92.44
▲ IPC (México)	52,251.49	0.53%	1.84%	2.18%	18.57%	321.60
▲ S&P MILA 40	468.71	0.80%	2.21%	2.61%	-12.33%	6,542.16

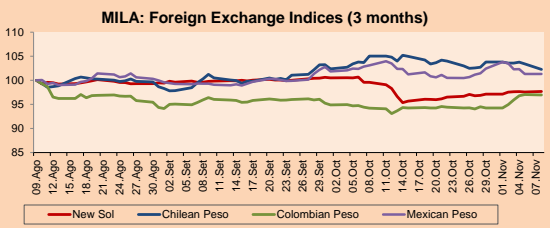
*Legend: Variation 1D: 1 day; 5D: 5 days; 1M: 1 Month; YTD: Var% 12/31/20 to date



Source: Bloomberg

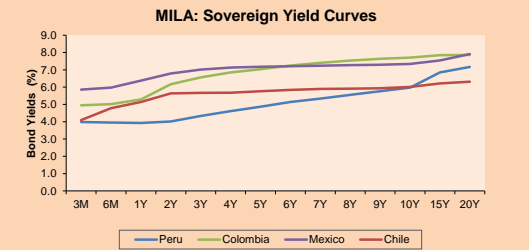
Currency	Price	1D*	5D*	30 D*	YTD*
▲ Sol (PEN)	4.0141	0.09%	0.52%	-1.79%	10.95%
▼ Chilean Peso (CLP)	802.58	-1.11%	-1.46%	-2.61%	12.76%
▼ Colombian Peso (COP)	3,876.38	-0.06%	2.89%	2.91%	13.02%
▼ Mexican Peso (MXN)	20.34	0.00%	-2.40%	-1.73%	2.15%

*Legend: Variation 1D: 1 day; 5D: 5 days; 1M: 1 Month; YTD: Var% 12/31/20 to date



Base: 09/08/21=100
Source: Bloomberg

Fixed Income	Currency	Price	Bid Yield (%)	Ask Yield (%)	Duration
PERU 7.35 07/21/25	USD	120.445	1.69	1.57	3.27
PERU 4.125 08/25/27	USD	110.391	2.25	2.16	5.19
PERU 8.75 11/21/33	USD	156.454	3.13	3.06	8.33
PERU 6.55 03/14/37	USD	137.315	3.44	3.44	10.17
PERU 5.625 11/18/2050	USD	139.279	3.49	3.45	16.32
CHILE 2.25 10/30/22	USD	101.677	0.74	0.30	0.96
CHILE 3.125 01/21/26	USD	106.314	1.61	1.52	3.93
CHILE 3.625 10/30/42	USD	108.019	3.13	3.08	15.17
COLOM 11.85 03/09/28	USD	152.966	2.83	2.56	4.88
COLOM 10.375 01/28/33	USD	145.558	5.10	4.93	7.40
COLOM 7.375 09/18/37	USD	123.39	5.23	5.15	10.02
COLOM 6.125 01/18/41	USD	110.729	5.26	5.20	11.60
MEX 4 10/02/23	USD	110.729	5.262	5.201	11.6
MEX5.55 01/45	USD	120.166	4.21	4.16	13.90



Source: Bloomberg

Equity

Largest gains	Exchange	Currency	Price	▲%
CEMEX SAB-CPO	Mexico	MXN	14.26	10.20
SOUTHERN COPPER	Peru	USD	61.75	5.05
FALABELLA SA	Chile	CLP	2570.00	4.43
SMU SA	Chile	CLP	83.76	2.00
PROMOTORA Y OPER	Mexico	MXN	156.82	1.95

Per Turnover

	Exchange	Amount (US\$)
CEMEX SAB-CPO	Mexico	49,758,042
AMERICA MOVIL-L	Mexico	48,452,095
SOQUIMICH-B	Chile	39,144,733
GRUPO F BANORT-O	Mexico	33,565,582
WALMART DE MEXIC	Mexico	26,607,362

Largest losses	Exchange	Currency	Price	▼%
CAP	Chile	CLP	7300	-6.41
CENCOSUD SHOPPIN	Chile	CLP	800.12	-4.52
PARQUE ARAUCO	Chile	CLP	825.18	-3.94
EMPRESAS COPEC	Chile	CLP	6126	-3.83
CERVEZAS	Chile	CLP	7311	-3.79

Per Volume

	Exchange	Volume
ITAU CORPBANCA	Chile	1,512,867,210
BANCO SANTANDER	Chile	142,851,687
ENEL CHILE SA	Chile	104,932,401
ENEL AMERICAS SA	Chile	96,932,940
BANCO DE CHILE	Chile	92,569,282

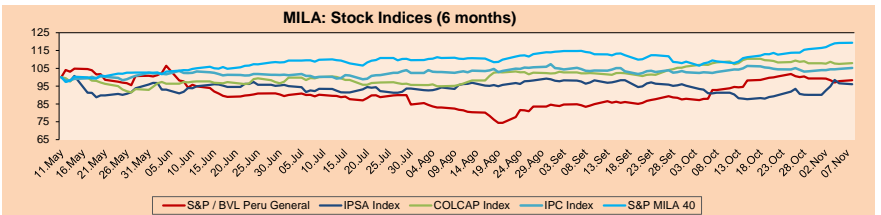
MILA

Peru: The General Index of the BVL ended today's session with a positive result of + 0.54%. The index maintains an annual accumulated negative trend of -1.40% in local currency, while the adjusted return in dollars amounts to -11.13%. Then, the S&P / BVL Peru SEL changed by + 0.25% while the S&P / BVL LIMA 25 by + 0.06%. The PEN spot reached S / 4.0141. Headline: Peru's country risk fell six basis points and closed at 1.42 percentage points

Chile: The IPSA index ended the day with a negative return of -0.57%. The sectors that benefited the least from the session were Real Estate (-3.95%) and Energy (-3.83%). The worst performing stocks were CAP SA (-6.41%) and Cencosud Shopping SA (-4.52%). Headline: Banco de Chile raises provisions due to economic uncertainty and warns of lower demand for mortgages

Colombia: The COLCAP index closed today with a positive return of + 0.41%. The sectors that benefited the most from the session were Non-Basic Consumer Products (+ 2.41%) and Energy (+ 1.30%). The stocks with the best performance were Organización Terpel (+ 2.41%) and Grupo Energía Bogotá (+ 1.74%). Headline: Consumer Confidence in the country increased in October: reached -1.3%

Mexico: The IPC index closed the day with a positive return of + 0.53%. The most benefited sectors of the day were Materials (+ 3.93%) and Health (+ 1.71%). The best performing stocks were Cemex SAB (+ 10.20%) and GCC SAB de CV (+ 4.38%) Headline: Gross fixed investment rises 1.13% in August and links its second month with increases

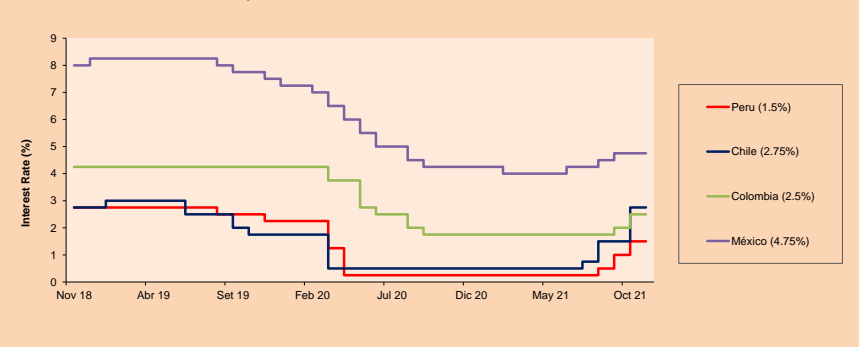


Base: 12/05/21=100
Source: Bloomberg

ETFs

	Curr.	Close	1D	5D	30 D	YTD	Exchange
▲ iShares MSCI All Peru Caped Index Fund	USD	29.78	1.47%	-1.91%	6.89%	-14.13%	NYSE Arca
▲ iShares MSCI All Chile Caped Index Fund	USD	26.57	0.42%	5.98%	8.14%	-12.05%	Cboe BZX
▲ Global X MSCI Colombia	USD	10.615	0.47%	-3.68%	-1.88%	-6.56%	NYSE Arca
▲ iShares MSCI Mexico Capped	USD	49.91	0.48%	3.57%	3.87%	16.10%	NYSE Arca
▲ iShares MSCI Emerging Markets	USD	51.39	0.92%	0.14%	1.12%	-0.54%	NYSE Arca
▲ Vanguard FTSE Emerging Markets	USD	51.42	1.04%	0.53%	1.24%	2.61%	NYSE Arca
▲ iShares Core MSCI Emerging Markets	USD	63.11	0.91%	0.29%	1.27%	1.72%	NYSE Arca
▲ iShares JP Morgan Emerging Markets Bonds	USD	63.89	0.79%	0.76%	1.30%	4.60%	Cboe BZX
- Morgan Stanley Emerging Markets Domestic	USD	5.8	0.00%	0.00%	-0.68%	-7.79%	New York

MILA: Policy Rate



Source: Bloomberg

Capital Market Laboratory Coordinator: Economist Bruno Bellido
Collaboration: Miguel Solimano, Alonso García, Ariam Loayza y Jairo Valverde
email: pulso@bursatil@ulima.edu.pe
facebook: www.facebook.com/pulso@bursatil.ul

The content of this document is just for informational purposes. The information and opinions expressed should not be considered as recommendations for future decisions. Under any circumstances, the Capital Market Laboratory of University of Lima will be responsible for the use of the statements in this document.

PULSO BURSÁTIL

FACULTAD DE CIENCIAS EMPRESARIALES Y ECONÓMICAS
CARRERA DE ECONOMÍA
LABORATORIO DE MERCADO DE CAPITALES



WORLD

Main Indices	Close	1 D*	5 D*	1 M*	YTD*	Market Cap. (US\$ Mill.)
▲ Dow Jones (USA)	36,432.22	0.29%	1.44%	4.85%	19.03%	11,401,821
▲ Standard & Poor's 500 (EEUU)	4,701.70	0.09%	1.91%	7.07%	25.18%	41,548,339
▲ NASDAQ Composite (USA)	15,982.36	0.07%	2.48%	9.62%	24.01%	27,080,083
▲ Stoxx EUROPE 600 (Europe)	483.61	0.04%	0.99%	5.76%	21.20%	11,628,034
▼ DAX (Germany)	16,046.52	-0.05%	1.52%	5.53%	16.97%	1,502,393
▼ FTSE 100 (United Kingdom)	7,300.40	-0.05%	0.16%	2.89%	13.00%	1,550,066
▼ CAC 40 (France)	7,047.48	0.10%	2.24%	7.43%	26.95%	2,014,882
▼ IBEX 35 (Spain)	9,070.80	-0.65%	-1.22%	1.29%	12.35%	522,282
▼ MSCI AC Asia Pacific Index	198.81	0.15%	0.09%	2.00%	-0.55%	25,895,271
▼ HANG SENG (Hong kong)	24,763.77	-0.43%	-1.55%	-0.05%	-8.83%	3,818,833
▼ SHANGHAI SE Comp. (China)	3,498.63	0.20%	-1.29%	-2.53%	0.81%	7,143,301
▼ NIKKEI 225 (Japan)	29,507.05	-0.35%	2.13%	5.22%	7.54%	4,253,219
▼ S&P/ASX 200 (Australia)	7,452.21	-0.06%	1.11%	1.85%	13.19%	1,770,033
▲ KOSPI (South Korea)	2,960.20	0.53%	1.84%	-0.04%	2.84%	1,783,511

*Legend: Variation 1D: 1 Day; 5D: 5 Days; 1M: 1 Month; YTD: Var.% 12/31/20 to date

Equity

Germany (Stocks from DAX Index)

Largest gains	Curr.	Price	▲%	Exchange	Largest losses	Curr.	Price	▼%	Exchange
ENR GY	EUR	23.96	5.00	Xetra	PAHG GY	EUR	87.3	-1.67	Xetra
MRK GY	EUR	208.2	2.92	Xetra	ADS GY	EUR	294	-1.47	Xetra
AIR GY	EUR	115.6	1.49	Xetra	FME GY	EUR	60.5	-1.37	Xetra
HFG GY	EUR	84.76	1.22	Xetra	DTE GY	EUR	16.602	-1.37	Xetra

Europe (Stocks from STOXX EUROPE 600)

Largest gains	Curr.	Price	▲%	Exchange	Largest losses	Curr.	Price	▼%	Exchange
DARK LN	GBp	649.5	12.47	London	EN FP	EUR	33.52	-5.82	EN Paris
ZO1 GY	EUR	482.4	0.58	Xetra	HMB SS	SEK	163.26	-5.19	Stockholm
SGRE SQ	EUR	20.46	8.92	Soc.Bol SIBE	ALIFB GY	SEK	336.4	-4.49	Stockholm
VWVS DC	DKK	224	6.67	Copenhagen	HUSQB SS	SEK	125	-3.55	Stockholm

Global Overview:

United States:

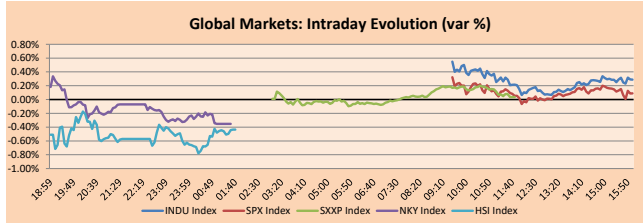
The major US indices closed the day with positive returns, thanks to gains from the passage of a US infrastructure spending bill. However, the fall of Tesla negatively affected the stock indices. In this way, the S & P 500 and the Nasdaq extended their streak of all-time highs. Likewise, the Dow Jones closes higher despite the blow by Tesla Inc. On the other hand, among the most relevant news of the day, the approval of the infrastructure bill for 1 trillion dollars by President Joe Biden boosted the industrial sector and materials. On the other hand, Tesla Inc fell by almost 5%, after its CEO Elon Musk conducted a poll on Twitter on whether he should sell 10% of his shares in the company, obtaining 57.9% voting "Yes". In addition, investors are pending Biden's social spending bill where the House of Representatives is expected to vote the following week. Finally, the quarterly earnings season is ending, with 445 S&P 500 companies reporting, 81% of which beat analyst expectations, according to Refinitiv. Thus, DOW JONES + 0.29%; S&P 500 + 0.09%; NASDAQ + 0.07% ended the day with gains.

Europe

The main European indices ended the session with mixed but little change as investors responded to the data released on Saturday on China's international trade. They also remain on hold ahead of consumer inflation data for China and the United States, to be released on Tuesday and Wednesday respectively. The pan-European STOXX 600 index closed with +0.04%, due to the statements of the European Central Bank's chief economist, Philip Lane, in which he mentions a reduction in Eurozone inflation for next year. It was also due to new third quarter reports from corporate companies. The U.K. market ended lower as investors await Thursday's preliminary trade balance data, and the third quarter GDP growth rate. The economic recovery is expected to slow down due to an energy crisis and supply chain problems. Meanwhile, the German DAX index ended with negative performances, as a result of the drag from the Consumer Staples -2.16% and Communication Services -1.37% sectors. Similarly, France's CAC40 closed higher, due to promising corporate news and the favorable performance of stocks belonging to the luxury goods sector. Thus, FTSE 100 -0.05%; CAC 40 +0.09%; DAX -0.05%; STOXX 600 +0.04% ended with mixed performances.

Asia:

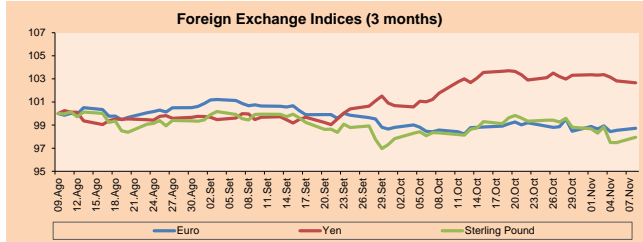
Major Asian indices closed with mostly mixed performances on Chinese export results released that weekend. The data showed an increase of 27.1% in October from a year ago, above the 24.5% expected. The Chinese market closed higher on the back of its export data, helped by booming global demand ahead of winter holidays, easing energy shortages and improving supply chains. The South Korean market fell to a one-month low, dragged down by losses in biopharmaceutical companies following positive data from Pfizer on its experimental COVID-19 pill. Meanwhile, the Hang Seng index ended lower on the back of COVID-19 vaccine-related stocks, such as Casinobio Biotech Inc. down -17.20%, following Pfizer's breakthrough against the coronavirus. Japan's NIKKEI, on the other hand, fell on the back of weak results from construction stocks. Obayashi Corp fell 9.18% after the publisher slashed its forecasts, hit in part by rising costs. The Australian market ended lower on the back of the Reserve Bank of Australia's extremely cautious tone regarding rate hikes. This, along with last week's unrealized bond buying, which sparked volatility in the country. Thus, NIKKEI -0.35%; HANG SENG -0.43%; CSI 300 +0.12%; S&P/ASX 200 -0.06%; KOSPI -0.31%; SHANGAI COMPOSITE +0.20% ended with mixed performances.



Source: Bloomberg

Currency	Price	1 D*	5 D*	1 M*	YTD*
▲ Euro	1.1587	0.17%	-0.16%	0.16%	-5.15%
▼ Yen	113.2300	-0.16%	-0.68%	0.88%	9.67%
▲ Sterling Pound	1.3563	0.48%	-0.75%	-0.38%	-0.78%
▼ Yuan	6.3927	-0.10%	-0.08%	-0.79%	-2.06%
▲ Hong Kong Dollar	7.7885	0.07%	0.07%	0.06%	0.46%
- Brazilian Real	5.5423	0.00%	-2.53%	0.61%	6.61%
▲ Argentine Peso	100.0605	0.11%	0.24%	1.13%	18.91%

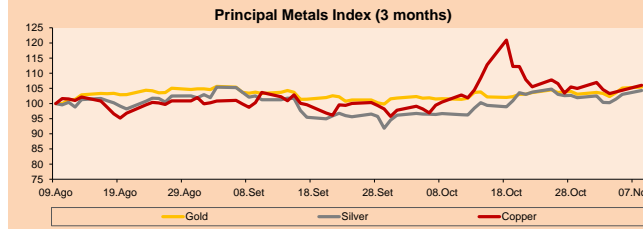
*Legend: Variation 1D: 1 Day; 5D: 5 Days; 1M: 1 Month; YTD: Var.% 12/31/20 to date



Base: 09/08/21=100
Source: Bloomberg

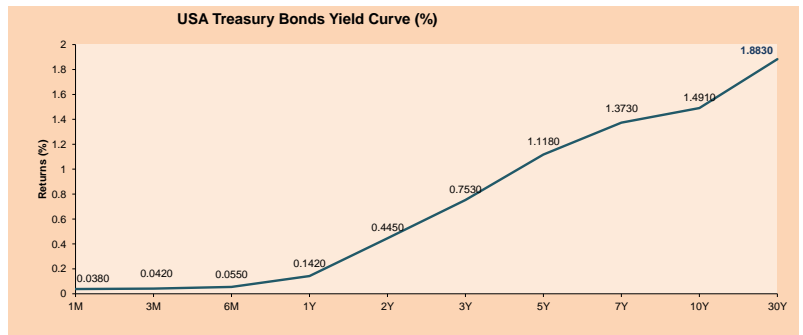
Commodities	Close	1 D*	5 D*	1 M*	YTD*
▲ Oro (US\$ Oz. T) (LME)	1,824.18	0.32%	1.72%	3.82%	-3.91%
▲ Plata (US\$ Oz. T) (LME)	24.46	1.24%	1.73%	7.86%	-7.36%
▲ Cobre (US\$ TM) (LME)	3,305.00	1.58%	-0.86%	5.54%	27.86%
▲ Zinc (US\$ TM) (LME)	3,305.00	1.15%	-3.06%	5.10%	21.09%
▲ Petróleo WTI (US\$ Barril) (NYM)	81.93	0.81%	-2.52%	4.02%	71.83%
▲ Estano (US\$ TM) (LME)	38,442.50	0.87%	-0.20%	3.37%	87.12%
▲ Plomo (US\$ TM) (LME)	2,385.00	0.57%	-0.96%	4.82%	20.71%
▼ Azúcar #11 (US\$ Libra) (NYB-ICE)	19.92	-0.10%	2.84%	-1.82%	39.59%
▲ Cacao (US\$ TM) (NYB-ICE)	2,480.00	1.31%	-4.69%	-11.08%	-0.40%
▼ Café Arábica (US\$ TM) (NYB-ICE)	202.45	-1.91%	-4.26%	-0.88%	48.59%

*Leyenda: Variación 1D: 1 Día; 5D: 5 Días; 1M: 1 Mes; YTD: Var.% 31/12/20 a la fecha



Base: 09/08/21=100
Source: Bloomberg

ETFs	Curr.	Close	1D	5D	30 D	YTD	Exchange
SPDR S&P 500 ETF TRUST	USD	468.93	0.09%	1.93%	7.10%	25.42%	NYSE Arca
ISHARES MSCI EMERGING MARKET	USD	51.39	0.92%	0.14%	1.12%	-0.54%	NYSE Arca
ISHARES IBOXX HIGH YLD CORP	USD	87.39	-0.13%	0.96%	0.73%	0.10%	NYSE Arca
FINANCIAL SELECT SECTOR SPDR	USD	40.24	0.55%	-0.10%	3.13%	36.50%	NYSE Arca
VAANEK GOLD MINERS ETF	USD	32.90	0.46%	3.26%	7.27%	-8.68%	NYSE Arca
ISHARES RUSSELL 2000 ETF	USD	242.56	0.31%	3.68%	9.47%	23.72%	NYSE Arca
SPDR GOLD SHARES	USD	170.45	0.36%	1.75%	3.79%	-4.43%	NYSE Arca
ISHARES 20+ YEAR TREASURY BO	USD	149.02	-0.19%	1.76%	5.03%	-5.52%	NASDAQ GM
INVESCO QQQ TRUST SERIES 1	USD	398.06	-0.14%	2.74%	10.22%	26.88%	NASDAQ GM
ISHARES BIOTECHNOLOGY ETF	USD	157.63	0.44%	-2.47%	1.66%	4.05%	NASDAQ GM
ENERGY SELECT SECTOR SPDR	USD	58.79	0.91%	0.56%	3.92%	55.12%	NYSE Arca
PROSHARES ULTRA VIX ST FUTUR	USD	15.77	0.13%	-2.23%	-23.41%	-85.19%	Cboe BZX
UNITED STATES OIL FUND LP	USD	57.06	0.95%	-0.76%	2.92%	72.95%	NYSE Arca
ISHARES MSCI BRAZIL ETF	USD	29.92	-0.10%	0.44%	-7.85%	-19.29%	NYSE Arca
SPDR S&P OIL & GAS EXP & PR	USD	111.47	1.60%	1.72%	5.79%	90.55%	NYSE Arca
UTILITIES SELECT SECTOR SPDR	USD	66.22	-1.49%	-1.38%	2.24%	5.61%	NYSE Arca
ISHARES US REAL ESTATE ETF	USD	110.02	-0.20%	-0.02%	6.47%	28.45%	NYSE Arca
SPDR S&P BIOTECH ETF	USD	130.51	-0.62%	0.71%	5.73%	-7.30%	NYSE Arca
ISHARES IBOXX INVESTMENT GRA	USD	134.52	-0.23%	1.16%	2.06%	-2.61%	NYSE Arca
ISHARES JP MORGAN US EMERGI	USD	110.72	-0.09%	1.36%	1.72%	-4.48%	NASDAQ GM
REAL ESTATE SELECT SECTOR SPDR	USD	48.21	-0.02%	0.58%	8.05%	31.87%	NYSE Arca
ISHARES CHINA LARGE-CAP ETF	USD	39.78	1.12%	-3.12%	-0.43%	-14.32%	NYSE Arca
CONSUMER STAPLES SPDR	USD	72.42	-0.79%	1.49%	3.38%	7.37%	NYSE Arca
VAANEK JUNIOR GOLD MINERS	USD	45.19	0.98%	3.53%	10.81%	-16.69%	NYSE Arca
SPDR BLOOMBERG HIGH YIELD BO	USD	109.19	-0.10%	1.00%	0.68%	0.23%	NYSE Arca
VANGUARD REAL ESTATE ETF	USD	109.89	-0.08%	0.28%	6.89%	29.39%	NYSE Arca
GRAYSCALE BITCOIN TRUST BTC	USD	52.30	7.68%	6.21%	23.52%	63.44%	OTC US



Source: Bloomberg

Capital Market Laboratory Coordinator: Economist Bruno Bellido

Collaboration: Miguel Solimano, Alonso García, Ariam Loayza y Jairo Valverde
email: pulsohorsatil@ulima.edu.pe
facebook.com/pulsohorsatil.ul

LIMA

Stocks

Ticker	Currency	Price	1D*	5D*	30D*	YTD*	Frequency	Volume (US\$)	Beta	Dividend Yield (%)	Price Earning	Market Cap. (M US\$)	Economic Sector*	Index Weight
▲ ALICORC1 PE**	S/.	6.40	0.51%	0.34%	-0.71%	-7.12%	100.00%	207,314	1.02	13.05	13.17	1,358.66	Industrial	3.53%
▲ ATACOCB1 PE**	S/.	0.14	0.00%	-3.45%	21.74%	1.45%	84.21%	803	1.11	0.00	-	32.95	Mining	1.02%
▼ BACKUSH1 PE**	S/.	19.85	-0.70%	5.03%	9.07%	-1.49%	100.00%	47,335	0.73	4.71	7.42	6,662.05	Industrial	0.82%
▲ BAP PE**	US\$	127.48	0.04%	-1.90%	1.17%	-20.62%	100.00%	80,845	1.20	0.96	-	12,031.86	Diverse	5.82%
▲ BVN PE**	US\$	7.38	1.10%	-5.38%	0.54%	-38.50%	100.00%	81,444	1.17	0.00	-	2,030.69	Mining	5.88%
▼ CASAGRC1 PE**	S/.	6.10	-1.77%	4.27%	14.02%	28.42%	84.21%	48,660	1.29	16.15	4.20	128.01	Agricultural	1.31%
- BBVAC1 PE**	S/.	2.02	0.00%	1.00%	6.32%	-3.63%	94.74%	76,580	1.12	2.25	13.99	3,401.04	Finance	2.85%
- CORAREH1 PE**	S/.	1.60	4.58%	7.38%	40.35%	79.78%	100.00%	168,714	1.14	17.22	2.44	471.60	Industrial	1.72%
- CPACASC1 PE**	S/.	4.90	0.00%	-1.01%	9.13%	-7.55%	94.74%	82,828	0.71	16.12	35.00	566.58	Industrial	2.38%
▲ CVERDEC1 PE**	US\$	23.00	4.55%	9.26%	31.43%	9.94%	100.00%	557,478	1.36	2.48	8.38	8,051.29	Mining	5.25%
▲ ENGEPEC1 PE**	S/.	2.24	1.82%	3.70%	14.87%	-5.49%	78.95%	2,051	0.69	14.85	9.75	1,336.81	Public Services	1.44%
- ENDISPC1**	S/.	4.39	0.00%	-0.23%	11.99%	-18.70%	68.42%	23,021	0.80	0.00	8.97	698.36	Public Services	0.98%
- FERREYC1 PE**	S/.	1.90	0.00%	-4.52%	5.56%	9.20%	100.00%	151,199	1.12	10.36	5.39	461.82	Diverse	4.90%
- AENZAC1 PE**	S/.	1.55	0.00%	-1.90%	4.73%	-10.92%	94.74%	128,691	0.97	0.00	-	336.68	Diverse	4.05%
▲ IFS PE**	US\$	27.58	1.40%	-3.23%	14.92%	-10.86%	94.74%	4,960	1.24	2.79	7.63	3,184.05	Diverse	7.22%
▼ INRETC1 PE**	US\$	36.90	-1.60%	-0.27%	5.13%	-5.87%	89.47%	96,289	0.90	1.85	60.68	3,793.59	Diverse	5.28%
▲ LUSURC1 PE**	S/.	13.70	-1.44%	1.48%	16.10%	-46.27%	84.21%	6,529	#N/A N/F	7.58	14.84	1,661.95	Public Services	1.81%
▼ MINSURH1 PE**	S/.	3.15	-1.56%	1.61%	14.55%	70.27%	100.00%	11,256	0.99	10.61	2.43	2,262.39	Mining	3.09%
▼ PML PE**	US\$	0.14	-3.52%	-4.86%	14.17%	29.25%	78.95%	9,590	1.25	0.00	-	36.22	Mining	2.12%
- RELAPAC1 PE**	S/.	0.15	0.00%	0.00%	-16.00%	113.04%	15.79%	14,203	0.80	0.00	2.18	#VALOR!	Industrial	2.12%
▲ SCCO PE**	US\$	61.75	5.05%	2.40%	5.38%	-6.30%	94.74%	71,156	0.77	4.37	14.69	47,737.77	Mining	2.14%
▲ SIDERC1 PE**	S/.	1.52	0.66%	4.83%	21.60%	41.00%	100.00%	69,986	0.89	23.29	3.62	265.07	Industrial	1.43%
▼ TV PE**	US\$	0.16	-5.29%	-15.71%	9.52%	9.52%	84.21%	75,242	1.26	0.00	-	159.24	Mining	2.93%
▼ UNACEMC1 PE**	S/.	1.67	-0.60%	-2.34%	12.08%	7.74%	100.00%	107,237	1.15	2.75	13.19	756.40	Industrial	3.00%
▼ VOLCABC1 PE**	S/.	0.66	-2.94%	-7.04%	10.00%	26.92%	100.00%	155,733	1.68	0.00	-	1,716.05	Mining	5.90%
▲ NEXAPEC1 PE**	S/.	3.45	1.47%	1.77%	20.21%	21.91%	78.95%	42,334	1.16	0.00	-	1,090.61	Mining	1.56%

Quantity of shares: 26
Source: Bloomberg, Económica
* Bloomberg Industry Classification System
** PER is used in the stock market and original currency of the instrument
*Legend: Variation 1D: 1 Day; 5D: 5 Days; 1M: 1 Month; YTD: Var.% 12/31/20 to date

Up 10
Down 9
Hold 7

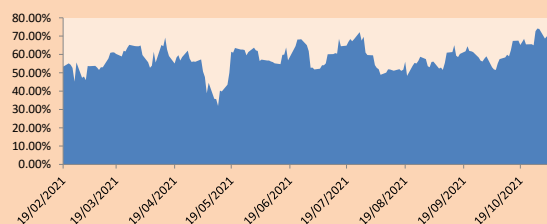
Sectorial Indices

	Close	1D*	5D*	30D*	YTD*	Beta
▲ S&P/BVL Mining	393.15	3.33%	0.81%	4.83%	0.82%	0.77
▼ S&P/BVL Consumer	1,155.37	-0.86%	0.63%	9.02%	6.13%	0.87
▲ S&P/BVL Industrials	226.41	0.04%	-1.93%	12.38%	18.81%	0.89
▲ S&P/BVL Financials	936.92	0.19%	-1.48%	0.77%	-9.38%	1.17
▲ S&P/BVL Construction	243.66	0.05%	-0.91%	13.28%	16.52%	0.79
▲ S&P/BVL Public Svcs	572.25	0.56%	1.09%	8.70%	-6.81%	0.36
▲ S&P/BVL Electric Util	558.66	0.56%	1.09%	8.70%	-6.82%	0.36

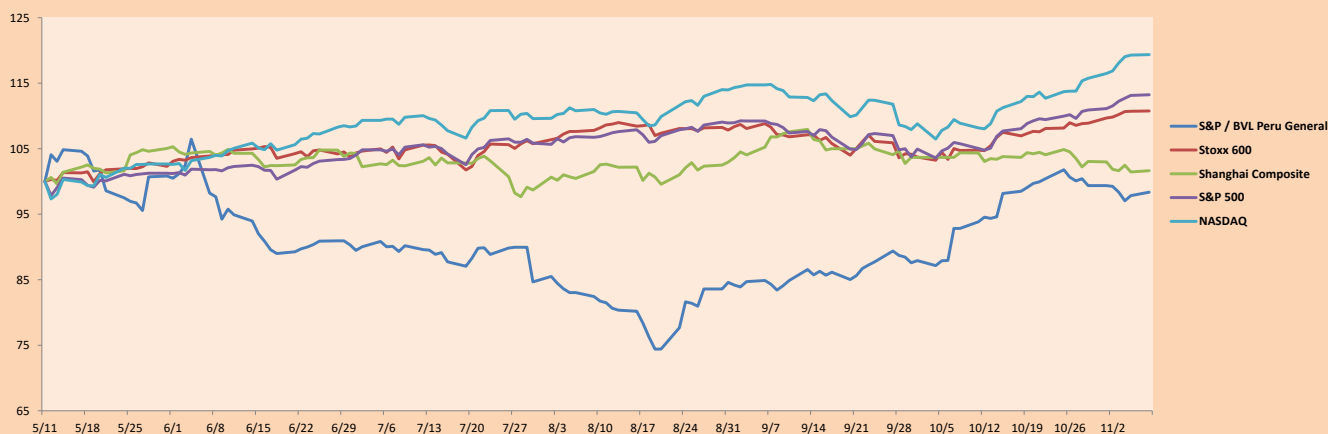
S&P/BVL Construction TRPEN

*Legend: Variation 1D: 1 Day; 5D: 5 Days; 1M: 1 Month; YTD: Var.% 12/31/20 to date

Correlation Graph of Returns of Mining Index against Metallic Index of London (3 months)



Indices (6 months)



Base: 11/05/21=100
Source: Bloomberg

Capital Market Laboratory Coordinator: Economist Bruno Bellido
Collaboration: Miguel Solimano, Alonso García, Ariam Loayza y Jairo Valverde
email: pulsobursatil@ulima.edu.pe
facebook: www.facebook.com/pulsobursatil.ul

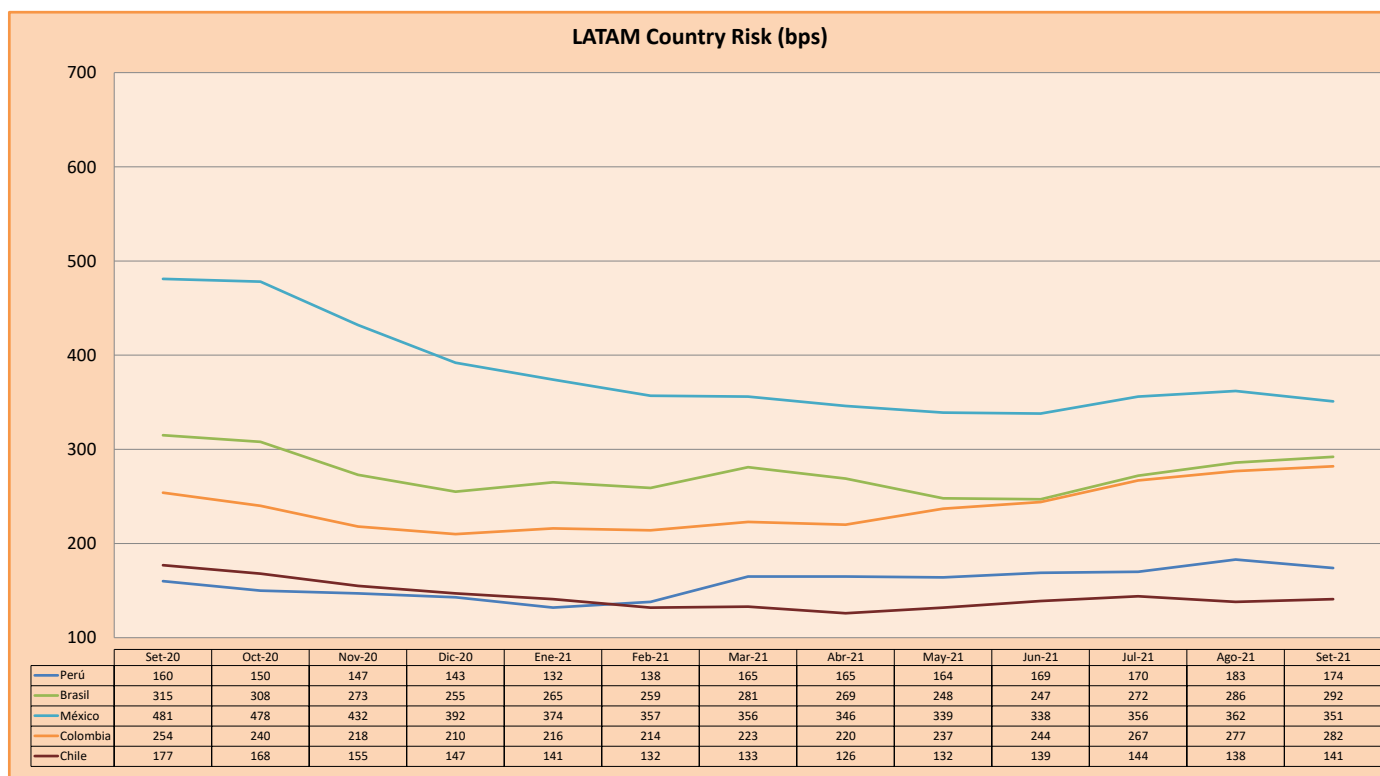
SOVEREIGN RATING

RISK RATINGS			
Moody's	S&P	Fitch	
Aaa	AAA	AAA	Prime
Aa1	AA+	AA+	High credit quality
Aa2	AA	AA	
Aa3	AA-	AA-	
A1	A+	A+	Medium-high grade, with low credit risk
A2	A	A	
A3	A-	A-	
Baa1	BBB+	BBB+	Moderate Credit Risk
Baa2	BBB	BBB	
Baa3	BBB-	BBB-	
Ba1	BB+	BB+	It has speculative elements and it is subject to substantial credit risk
Ba2	BB	BB	
Ba3	BB-	BB-	
B1	B+	B+	It is considered speculative and it has high credit risk
B2	B	B	
B3	B-	B-	
Caa1	CCC+	CCC	Bad credit conditions and it is subject to high credit risk
Caa2	CCC		
Caa3	CCC-		
Ca	CC	DDD	Very close to default or in default
C	C		
	D		

Source: Bloomberg

Latin America Credit Rating			
Clasificadora de riesgo			
Country	Moody's	Fitch	S&P
Peru	Baa1	BBB	BBB+
México	Ba2	BB-	BB-
Venezuela	C	WD	NR
Brazil	Ba2	BB-	BB-
Colombia	Baa2	BB+	BB+
Chile	A1	A-	A
Argentina	Ca	WD	CCC+
Panama	Baa2	BBB-	BBB

Source: Bloomberg



Source: BCRP

Capital Market Laboratory Coordinator: Economist Bruno Bellido
Collaboration: Miguel Solimano, Alonso García, Ariam Loayza y Jairo Valverde
email: pulsohorsatil@ulima.edu.pe
facebook: www.facebook.com/pulsohorsatil.ul