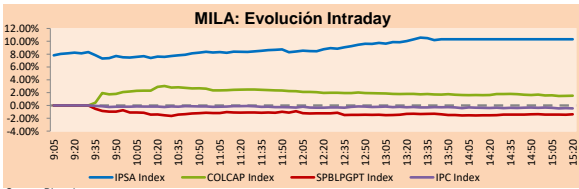


MILA

Lima, november 22, 2021

Main Indexes	Close	1 D	5 D	1 M	YTD	Cap. Burs. (US\$ bill)
▲ IPSA (Chile)	4,780.91	9.69%	9.09%	17.05%	14.45%	100.04
▲ IGPA (Chile)	23,874.04	9.28%	8.44%	16.87%	13.65%	119.27
▲ COLSC (Colombia)	936.49	-0.03%	-3.29%	-3.35%	-11.57%	4.35
▲ COLCAP (Colombia)	1,312.18	1.04%	-3.27%	-6.25%	-8.74%	74.97
▲ S&P/BVL (Perú)*	19,831.97	-1.46%	-4.14%	-5.38%	-4.76%	92.70
▲ S&P/BVL SEL (Perú)	526.16	-1.19%	-3.45%	-5.06%	-4.59%	83.43
▲ S&P/BVL LIMA 25	28,312.33	-1.31%	-2.34%	-1.33%	12.36%	91.44
▲ IPC (México)	50,497.08	-0.62%	-1.82%	-2.68%	14.59%	303.65
▲ S&P MILA 40	469.71	5.27%	0.38%	1.49%	-12.14%	6,377.37

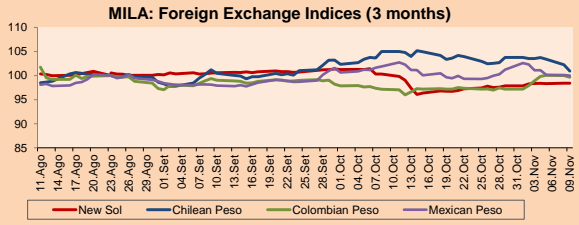
*Legend: Variation 1D: 1 day; 5D: 5 days; 1M: 1 Month; YTD: Var% 12/31/20 to date



Source: Bloomberg

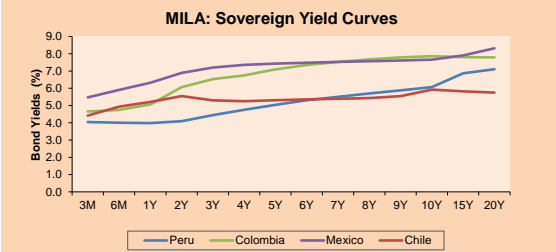
Currency	Price	1D*	5D*	30 D*	YTD*
▲ Sol (PEN)	4.0094	0.05%	0.42%	1.09%	10.82%
▲ Chilean Peso (CLP)	811.95	-2.16%	1.79%	-0.49%	14.07%
▲ Colombian Peso (COP)	3,894.82	-0.55%	0.26%	3.20%	13.56%
▲ Mexican Peso (MXN)	21.00	0.83%	1.83%	4.08%	5.46%

*Legend: Variation 1D: 1 day; 5D: 5 days; 1M: 1 Month; YTD: Var% 12/31/20 to date



Base: 23/08/21=100
Source: Bloomberg

Fixed Income	Currency	Price	Bid Yield (%)	Ask Yield (%)	Duration
PERU 7.35 07/21/25	USD	120.111	1.72	1.61	3.24
PERU 4.125 08/25/27	USD	109.845	2.33	2.25	5.15
PERU 8.75 11/21/33	USD	155.037	3.22	3.16	8.50
PERU 6.55 03/14/37	USD	135.102	3.58	3.53	10.09
PERU 5.625 11/18/2050	USD	136.829	3.59	3.56	16.52
CHILE 2.25 10/30/22	USD	101.572	0.79	0.33	0.93
CHILE 3.125 01/21/26	USD	105.632	1.77	1.66	3.89
CHILE 3.625 10/30/42	USD	105.874	3.26	3.21	15.04
COLOM 11.85 03/09/28	USD	151.902	2.90	2.69	4.84
COLOM 10.375 01/28/33	USD	145.581	5.07	4.94	7.34
COLOM 7.375 09/18/37	USD	120.485	5.46	5.40	9.90
COLOM 6.125 01/18/41	USD	107.69	5.50	5.44	11.45
MEX 4 10/02/23	USD	107.69	5.5	5.443	11.45
MEX5.55 01/45	USD	119.244	4.25	4.22	13.83



Source: Bloomberg

Equity

Largest gains	Exchange	Currency	Price	▲ %
GRUPO NUTRESA SA	Colombia	COP	26780.00	23.18
SMU SA	Chile	CLP	98.00	19.66
AGUAS ANDINAS-A	Chile	CLP	180.99	19.07
ENGIE ENERGIA CH	Chile	CLP	527.00	18.85
CENCOSUD SA	Chile	CLP	1350.00	15.38

Largest losses	Exchange	Currency	Price	▼ %
SOUTHERN COPPER	Peru	USD	58.18	-3.45
BUENAVENTURA-ADI	Peru	USD	6.6	-3.37
TRUST FIBRA UNO	Mexico	MXN	19.27	-3.21
GRUPO CARSO-A1	Mexico	MXN	65.24	-3.15
GRUPO BIMBO-A	Mexico	MXN	56.4	-3.03

Per Turnover	Exchange	Amount (US\$)
BANCO DE CHILE	Chile	62,546,105
AMERICA MOVIL-L	Mexico	33,330,980
FALABELLA SA	Chile	32,191,637
SOQUIMICH-B	Chile	28,278,084
CENCOSUD SA	Chile	27,484,279

Per Volume	Exchange	Volume
ITAU CORPBANCA	Chile	2,768,677,699
BANCO DE CHILE	Chile	616,985,687
BANCO SANTANDER	Chile	412,328,376
ENEL CHILE SA	Chile	132,749,650
ENEL AMERICAS SA	Chile	115,007,839

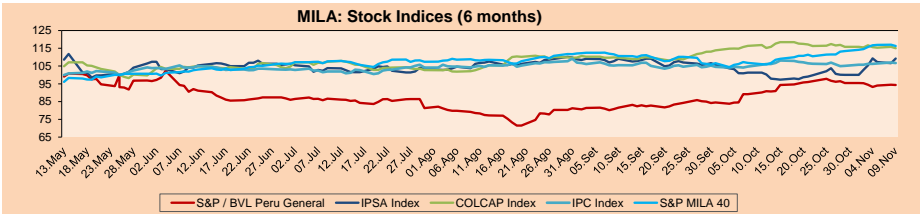
MILA

Peru: The General Index of the BVL ended today's session with a negative result of -1.46%. The index maintains an annual accumulated negative trend of -4.76% in local currency, while the adjusted yield in dollars amounts to -14.05%. Then, the S&P / BVL Peru SEL varied by -1.19% while the S&P / BVL LIMA 25 by -1.19%. The PEN spot reached 5 / 4.0094. Headline: Castillo distances himself from Vásquez: "There will be no arbitrary decisions and outside the law"

Chile: The IPSA index ended the day with a positive return of + 9.69%. The sectors that benefited the most from the session were Non-Basic Consumer Products (+ 14.85%) and Communication Services (+ 12.06%). The best performing stocks were SMU SA (+ 19.66%) and Aguas Andinas SA (+ 19.07%). Headline: Elections effect: stock market registers its biggest daily rise in 13 years

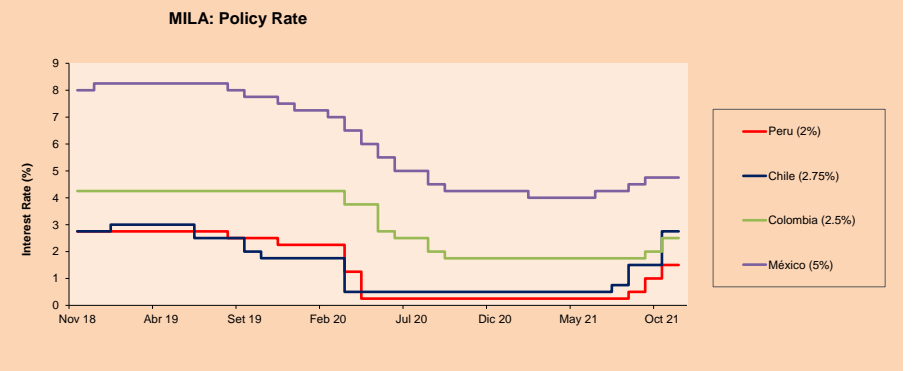
Colombia: The COLCAP index ended the day with a positive return of + 1.04%. The sectors that benefited the most from the session were First Needs Products (+23.18%) and Non-Basic Consumer Products (+ 3.49%). The best performing stocks were Grupo Nutresa (+ 23.18%) and Organización Terpel SA (+ 3.49%). Headline: Without Oil, Economy Would Shrink 3.3%: How Viable is it?

Mexico: The IPC index closed the day with a negative return of -0.62%. The most affected sectors of the day were Non-Basic Consumer Products (-2.31%) and Finance (-1.29%). The worst performing stocks were Asea SAB de CV (-3.37%) and Regional SAB de CV (-3.28%) Headline: Bad omen! Analysts forecast inflation of up to 7% at the end of 2021



Base: 13/05/21=100
Source: Bloomberg

ETFs	Curr.	Close	1D	5D	30 D	YTD	Exchange
▼ iShares MSCI All Peru Caped Index Fund	USD	28.65	-2.61%	-5.20%	-6.00%	-17.39%	NYSE Arca
▲ iShares MSCI All Chile Caped Index Fund	USD	28.5	11.95%	6.54%	17.57%	-5.66%	Cboe BZX
▲ Global X MSCI Colombia	USD	10.05	1.52%	-2.66%	-8.22%	-11.53%	NYSE Arca
▼ iShares MSCI Mexico Capped	USD	46.66	-1.29%	-3.81%	-5.79%	8.54%	NYSE Arca
▼ iShares MSCI Emerging Markets	USD	50.51	-0.81%	-2.55%	-2.94%	-2.25%	NYSE Arca
▼ Vanguard FTSE Emerging Markets	USD	50.53	-1.04%	-2.79%	-2.41%	0.84%	NYSE Arca
▼ iShares Core MSCI Emerging Markets	USD	62.01	-0.85%	-2.58%	-2.59%	-0.05%	NYSE Arca
▼ iShares JP Morgan Emerging Markets Bonds	USD	63.28	-0.88%	-1.71%	-0.92%	3.60%	Cboe BZX
▼ Morgan Stanley Emerging Markets Domestic	USD	5.76	-1.37%	-1.87%	-2.37%	-8.43%	New York



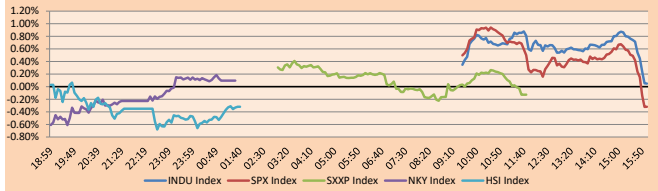
Source: Bloomberg

WORLD

Main Indices	Close	1 D*	5 D*	1 M*	YTD*	Market Cap. (US\$ Mill.)
▲ Dow Jones (USA)	35,619.25	0.05%	-1.30%	-0.16%	16.38%	11,421,456
▼ Standard & Poor's 500 (EUIU)	4,682.94	-0.32%	0.00%	3.04%	24.68%	41,497,678
▼ NASDAQ Composite (USA)	15,854.76	-1.26%	0.01%	5.07%	23.02%	27,331,417
▼ Stoxx EUROPE 600 (Europe)	485.46	-0.13%	-0.61%	2.88%	21.66%	12,026,015
▼ DAX (Germany)	16,115.69	-0.27%	-0.20%	3.68%	17.47%	1,550,267
▲ FTSE 100 (United Kingdom)	7,255.46	0.44%	-1.31%	0.71%	12.30%	1,559,768
▲ CAC 40 (France)	7,105.00	-0.10%	-0.33%	5.51%	27.99%	2,106,711
▲ IBEX 35 (Spain)	8,821.30	0.78%	-3.02%	-0.96%	9.26%	524,980
▼ MSCI AC Asia Pacific Index	198.47	-0.45%	-1.17%	-0.85%	-0.73%	26,014,575
▼ HANG SENG (Hong Kong)	24,951.34	-0.39%	-1.73%	-4.50%	-8.37%	3,840,410
▲ SHANGHAI SE Comp. (China)	3,582.08	0.61%	1.38%	-0.01%	3.14%	7,331,551
▲ NIKKEI 225 (Japan)	29,774.11	0.09%	-0.01%	3.36%	8.49%	4,205,405
▼ S&P/ASX 200 (Australia)	7,353.08	-0.59%	-1.57%	-0.58%	11.92%	1,706,444
▼ KOSPI (South Korea)	3,013.25	-0.62%	-1.82%	0.23%	4.86%	1,803,088

*Legend: Variation 1D: 1 Day; 5D: 5 Days; 1M: 1 Month; YTD: Var.% 12/31/20 to date

Global Markets: Intraday Evolution (var %)

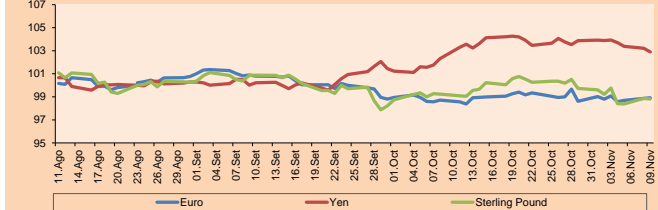


Source: Bloomberg

Currency	Price	1 D*	5 D*	1 M*	YTD*
▼ Euro	1.1237	-0.47%	-1.15%	-3.49%	-8.01%
▲ Yen	114.8800	0.78%	0.67%	1.22%	11.26%
▼ Sterling Pound	1.3397	-0.40%	-0.14%	-2.60%	-2.00%
▼ Yuan	6.3851	-0.03%	0.03%	0.00%	-2.18%
▼ Hong Kong Dollar	7.7902	-0.01%	0.02%	0.22%	0.48%
▼ Brazilian Real	5.5964	-0.25%	2.57%	-0.95%	7.65%
▼ Argentine Peso	100.4517	0.00%	0.19%	1.06%	19.38%

*Legend: Variation 1D: 1 Day; 5D: 5 Days; 1M: 1 Month; YTD: Var.% 12/31/20 to date

Foreign Exchange Indices (3 months)

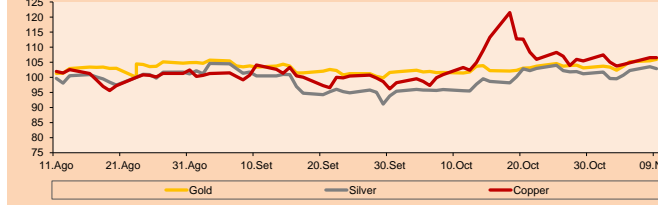


Base: 23/08/21=100
Source: Bloomberg

Commodities	Close	1 D*	5 D*	1 M*	YTD*
▼ Oro (US\$ Oz. T) (LME)	1,804.65	-2.23%	-3.12%	0.67%	-4.94%
▼ Plata (US\$ Oz. T) (LME)	24.18	-1.77%	-3.52%	-0.58%	-8.41%
▲ Cobre (US\$ TM) (LME)	9,835.50	0.85%	1.34%	-0.22%	26.93%
▲ Zinc (US\$ TM) (LME)	3,401.25	3.62%	5.14%	-2.78%	24.62%
▲ Petróleo WTI (US\$ Barril) (NYM)	76.75	1.07%	-3.76%	-6.97%	61.61%
▲ Estarño (US\$ TM) (LME)	39,902.00	0.70%	2.80%	2.73%	94.22%
▲ Plomo (US\$ TM) (LME)	2,271.00	2.39%	-3.53%	-7.75%	14.94%
▼ Azúcar #11 (US\$ Libra) (NYB-ICE)	19.76	-1.15%	0.10%	3.56%	38.47%
▼ Cacao (US\$ TM) (NYB-ICE)	2,598.00	0.19%	2.21%	-1.56%	3.94%
▼ Café Arábica (US\$ TM) (NYB-ICE)	231.30	-0.90%	2.80%	14.17%	69.76%

*Legend: Variación 1D: 1 Día; 5D: 5 Días; 1M: 1 Mes; YTD: Var.% 31/12/20 a la fecha

Principal Metals Index (3 months)



Base: 23/08/21=100
Source: Bloomberg

Equity

Germany (Stocks from DAX Index)

Largest gains	Curr.	Price	▲ %	Exchange	Largest losses	Curr.	Price	▼ %	Exchange
BMW GY	EUR	94.78	1.70	Xetra	BEI GY	EUR	91.6	-2.07	Xetra
CON GY	EUR	107.44	1.51	Xetra	ENR GY	EUR	23.93	-1.52	Xetra
DAI GY	EUR	90.97	1.31	Xetra	HFG GY	EUR	92.8	-1.44	Xetra
LIN GY	EUR	295.7	0.90	Xetra	DB1 GY	EUR	145.6	-1.39	Xetra

Europe (Stocks from STOXX EUROPE 600)

Largest gains	Curr.	Price	▲ %	Exchange	Largest losses	Curr.	Price	▼ %	Exchange
DPLM LN	GBP	3460	7.99	Londres	EVO SS	SEK	1350	-6.34	Stockholm
TEF SQ	EUR	4,221	6.39	Soc.Bol SIBSE	ADYEN NA	EUR	2459	-6.02	EN Amsterdam
ANTO LN	GBP	1479	5.01	Londres	G24 GY	EUR	60.78	-5.94	Xetra
INW IM	EUR	10.56	4.61	Borsa Italiana	ERICB SS	SEK	92.71	-5.60	Stockholm

Global Overview:

United States:

The main indices of the United States closed the day with mixed results, after reaching all-time highs as Jerome Powell will remain as chairman of the Federal Reserve in his second term. Likewise, confidence in the economic recovery and in the rate adjustment was well received by investors. Thus, the Nasdaq ended slightly higher, while the S & P500 and the Nasdaq ended lower. On the other hand, rising US Treasury yields dragged down tech stocks, which are considered relatively safe by investors. On the other hand, after Jerome Powell's announcement and his continuity in the FED, the central bank seeks to return to the pre-pandemic policy by 2022. It should be noted that insurance contracts expect the central bank to adjust interest rates by 25 basis points for the following June. Lastly, relative to stocks, Tesla Inc rose 1.7% after Elon Musk posted on Twitter that his new model arrived in China around March. Similarly, Zoom increased 6% after its quarterly revenue exceeded expectations. Thus, DOW JONES +0.05%; S&P 500 -0.32%; NASDAQ -1.26% ended the day mixed.

Europe:

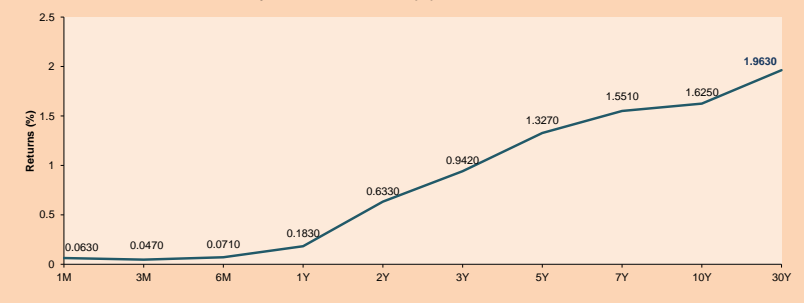
The main European indices ended the session with mostly negative performances, but without much variation, due to the concern of the COVID-19 breakthrough in the European continent. The pan-European STOXX 600 index closed with -0.13%, as Europe once again became the epicenter of the pandemic and some countries in the continent started to restore restrictive measures such as quarantine, generating protests over the weekend. The UK market finished higher, as the UK government opted to announce an extension to its COVID-19 incentive program to avoid the return of pandemic-induced restrictions that would harm economic recovery. However, these gains were tempered by uncertainty regarding the Bank of England's interest rate decision. The German DAX index ended with negative returns, after Chancellor Angela Merkel mentioned that Germany would need more restrictions to deal with the increase in the number of people infected by the coronavirus. Similarly, France's CAC40 closed lower, as the government will discuss extending the COVID-19 booster campaign to younger adults starting this week. Thus, FTSE 100 +0.44%; CAC 40 -0.10%; DAX -0.27%; STOXX 600 -0.13% ended with mixed performances.

Asia:

Major Asian indices closed with mostly positive returns as China kept its benchmark lending rate unchanged. On Monday, China kept the one-year loan prime rate unchanged at 3.85%. The five-year was also held at 4.65%. The Chinese market closed higher thanks to the central bank on Friday saying it will keep its monetary policy "flexible and targeted" and seek a balance between economic growth and risk controls. The South Korean market closed at a three-week high as chip heavyweights followed their U.S. peers amid a more favorable outlook for chip demand. Meanwhile, the Hang Seng index ended lower on increased caution over tech giants' results. Alibaba Group plunged more than 10% last week on disappointing results, adding to concerns over Beijing's sweeping regulatory measures. Japan's NIKKEI, on the other hand, closed with gains as investors bought cheaper shares after U.S. futures advanced in Asian trading hours. The Australian market fell as the resurgence of COVID-19 cases in Europe triggered further lockdowns and painted a gloomy picture of recovery for the global economy. Thus, NIKKEI +0.09%; HANG SENG -0.39%; CSI 300 +0.46%; S&P/ASX 200 -0.59%; KOSPI +1.42%; SHANGHAI COMPOSITE +0.61% ended with positive returns.

ETFs	Curr.	Close	1D	5D	30 D	YTD	Exchange
SPDR S&P 500 ETF TRUST	USD	467.57	-0.28%	0.03%	3.19%	25.06%	NYSE Arca
ISHARES MSCI EMERGING MARKET	USD	50.51	-0.81%	-2.55%	-2.94%	-2.25%	NYSE Arca
ISHARES IBOXX HIGH YLD CORP	USD	86.23	-0.38%	-0.60%	-0.70%	-1.23%	NYSE Arca
FINANCIAL SELECT SECTOR SPDR	USD	39.57	1.41%	-1.44%	-2.58%	34.23%	NYSE Arca
VANECK GOLD MINERS ETF	USD	33.00	-1.99%	-5.44%	0.03%	-8.38%	NYSE Arca
ISHARES RUSSELL 2000 ETF	USD	231.73	-0.43%	-2.86%	1.90%	18.19%	NYSE Arca
SPDR GOLD SHARES	USD	168.74	-2.24%	-3.12%	0.58%	-5.39%	NYSE Arca
ISHARES 20+ YEAR TREASURY BO	USD	146.62	-1.17%	0.78%	1.73%	-7.04%	NASDAQ GM
INVECO QQQ TRUST SERIES 1	USD	399.30	-1.16%	1.19%	6.74%	27.27%	NASDAQ GM
ISHARES BIOTECHNOLOGY ETF	USD	153.68	-0.57%	0.33%	-3.00%	1.45%	NASDAQ GM
ENERGY SELECT SECTOR SPDR	USD	55.64	1.77%	-4.12%	-3.99%	46.81%	NYSE Arca
PROSHARES ULTRA VIX ST FUTUR	USD	16.31	2.39%	9.10%	-2.80%	-84.69%	Cboe BZX
UNITED STATES OIL FUND LP	USD	54.45	1.25%	-2.89%	-6.17%	64.95%	NYSE Arca
ISHARES MSCI BRAZIL ETF	USD	29.16	-0.03%	-5.51%	-3.06%	-21.34%	NYSE Arca
SPDR S&P OIL & GAS EXP & PR	USD	100.33	1.58%	-7.23%	-6.74%	71.50%	NYSE Arca
UTILITIES SELECT SECTOR SPDR	USD	67.71	0.61%	0.27%	0.68%	7.99%	NYSE Arca
ISHARES US REAL ESTATE ETF	USD	109.14	-0.67%	-1.40%	-0.80%	27.43%	NYSE Arca
SPDR S&P BIOTECH ETF	USD	119.28	-2.17%	-3.72%	-3.95%	-15.27%	NYSE Arca
ISHARES IBOXX INVESTMENT GRA	USD	131.92	-0.87%	-0.04%	-0.29%	-4.50%	NYSE Arca
ISHARES JP MORGAN USD EMERGI	USD	108.28	-1.03%	-0.92%	-1.12%	-6.58%	NASDAQ GM
REAL ESTATE SELECT SECT SPDR	USD	47.97	-0.50%	-1.01%	0.59%	31.21%	NYSE Arca
ISHARES CHINA LARGE-CAP ETF	USD	39.99	-1.28%	-2.72%	-5.24%	-13.87%	NYSE Arca
CONSUMER STAPLES SPDR	USD	72.62	0.79%	-0.78%	1.87%	7.66%	NYSE Arca
VANECK JUNIOR GOLD MINERS	USD	44.90	-2.22%	-6.32%	1.04%	-17.22%	NYSE Arca
SPDR BLOOMBERG HIGH YIELD BO	USD	107.68	-0.37%	-0.67%	-0.74%	-1.16%	NYSE Arca
VANGUARD REAL ESTATE ETF	USD	108.88	-0.49%	-1.41%	-0.15%	28.20%	NYSE Arca
BITSCALE BITCOIN TRUST BTC	USD	45.15	-4.22%	-11.78%	-7.38%	41.09%	OTC US

USA Treasury Bonds Yield Curve (%)



Source: Bloomberg

LIMA

Stocks

Ticker	Currency	Price	1D*	5D*	30D*	YTD*	Frequency	Volume (US\$)	Beta	Dividend Yield (%)	Price Earning	Market Cap. (M US\$)	Economic Sector*	Index Weight
▼ ALICORC1 PE**	S/.	6.25	-0.03%	-3.29%	-3.35%	-11.57%	100.00%	340,539	1.02	13.36	12.86	1,328.74	Industrial	3.53%
▼ ATACOBC1 PE**	S/.	0.14	0.00%	1.45%	-3.45%	1.45%	89.47%	4,133	1.10	0.00	-	32.99	Mining	1.02%
▼ BACKUSI1 PE**	S/.	19.56	-0.71%	-0.20%	-1.71%	-2.93%	100.00%	12,596	0.72	4.78	7.31	6,478.13	Industrial	0.82%
▼ BAP PE**	US\$	118.50	-1.49%	-6.47%	-9.46%	-26.21%	100.00%	304,928	1.23	1.03	-	11,184.30	Diverse	5.82%
▼ BVN PE**	US\$	6.60	-3.37%	-15.17%	-23.26%	-45.00%	100.00%	818,968	1.18	0.00	-	1,816.07	Mining	5.88%
- CASAGRC1 PE**	S/.	6.70	0.00%	3.40%	16.32%	41.05%	84.21%	33,156	1.28	14.71	4.61	140.76	Agricultural	1.31%
▲ BBVAC1 PE**	S/.	2.02	1.00%	-0.98%	-0.98%	-3.63%	94.74%	68,898	1.09	2.25	13.99	3,405.02	Finance	2.85%
▼ CORAREI1 PE**	S/.	1.78	-3.78%	-0.56%	34.85%	100.00%	100.00%	208,393	1.13	15.48	2.72	550.81	Industrial	1.72%
▼ CPACASC1 PE**	S/.	5.21	-3.70%	-1.70%	3.17%	-1.70%	94.74%	81,918	0.65	15.16	37.21	600.02	Industrial	2.38%
▼ CVERDEC1 PE**	US\$	25.80	-1.53%	4.67%	22.86%	23.33%	100.00%	14,897,430	1.37	2.21	9.40	9,031.44	Mining	5.25%
- ENGEPEC1 PE**	S/.	2.32	0.00%	0.00%	8.92%	-2.11%	84.21%	3,977	0.69	0.00	10.10	1,386.17	Public Services	1.44%
- ENDISPC1**	S/.	4.28	0.00%	-5.31%	0.71%	-20.74%	73.68%	12,887	0.80	0.00	8.74	681.66	Public Services	0.98%
▼ FERREY1 PE**	S/.	1.86	-2.62%	-3.63%	-3.63%	6.90%	100.00%	157,562	1.15	10.58	5.24	452.63	Diverse	4.90%
▼ AENZAC1 PE**	S/.	1.35	-4.93%	-15.09%	-15.63%	-22.41%	94.74%	62,826	0.99	0.00	-	293.58	Diverse	4.05%
▲ IFS PE**	US\$	24.50	0.82%	-1.21%	-11.90%	-20.81%	94.74%	116,805	1.26	3.14	5.95	2,828.47	Diverse	7.22%
▲ INRETC1 PE**	US\$	35.70	0.56%	-6.54%	-3.77%	-8.93%	84.21%	157,339	0.86	3.81	77.04	3,670.22	Diverse	5.28%
▼ LUSURC1 PE**	S/.	13.70	-5.52%	-5.52%	-1.44%	-46.27%	84.21%	4,114	#N/A N/F	7.58	14.84	1,663.90	Public Services	1.81%
▼ MINSURI1 PE**	S/.	3.80	-1.30%	19.12%	20.25%	105.41%	100.00%	1,469,999	0.96	8.79	2.93	2,732.43	Mining	3.09%
- PML PE**	US\$	0.14	0.00%	0.00%	-4.11%	32.08%	84.21%	24,990	1.23	0.00	-	37.01	Mining	2.12%
- SCCO PE**	US\$	58.18	-3.45%	-5.90%	-9.11%	-11.71%	94.74%	349,962	0.78	5.50	13.84	44,977.87	Mining	2.14%
▼ SIDERC1 PE**	S/.	1.64	-2.96%	2.50%	13.10%	52.13%	100.00%	17,562	0.87	21.59	3.91	286.33	Industrial	1.43%
- TV PE**	US\$	0.15	0.00%	-6.25%	-24.24%	2.04%	84.21%	62,579	1.26	0.00	-	148.36	Mining	2.93%
- UNACEM1 PE**	S/.	1.78	-1.11%	6.59%	6.59%	14.84%	100.00%	230,877	1.16	3.71	14.05	807.17	Industrial	3.00%
- VOLCABC1 PE**	S/.	0.64	0.00%	-4.48%	-3.03%	23.08%	100.00%	484,730	1.69	0.00	-	650.72	Mining	5.90%
▲ NEXAPEC1 PE**	S/.	3.40	0.29%	-1.16%	-6.85%	20.14%	78.95%	65,453	1.16	0.00	-	1,076.20	Mining	1.56%

Quantity of shares: 25
Source: Bloomberg, Económica
* Bloomberg Industry Classification System
** PER is used in the stock market and original currency of the instrument
*Legend: Variation 1D: 1 Day; 5D: 5 Days, 1M: 1 Month; YTD: Var.% 12/31/20 to date

Up 4
Down 14
Hold 7

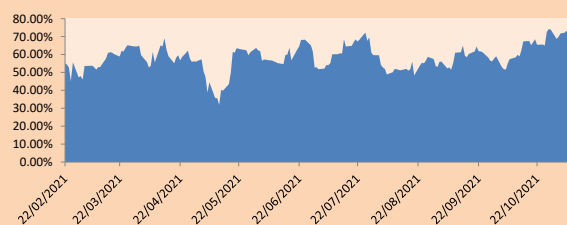
Sectorial Indices

	Close	1D*	5D*	30D*	YTD*	Beta
▼ S&P/BVLMining	378.33	-2.88%	-5.77%	-7.75%	-2.98%	0.78
▼ S&P/BVLConsumer	1,137.00	-0.11%	-2.94%	-0.92%	4.44%	0.85
▼ S&P/BVLIndustrials	234.12	-3.22%	-0.75%	4.42%	22.86%	0.91
▼ S&P/BVLFinancials	868.92	-1.15%	-5.40%	-8.43%	-15.96%	1.16
▼ S&P/BVLConstruction	257.08	-3.43%	0.30%	7.59%	22.93%	0.80
- S&P/BVLPublicSvcs	584.69	0.00%	-0.31%	3.21%	-4.79%	0.34
- S&P/BVLElectricUtil	570.80	0.00%	-0.31%	3.22%	-4.79%	0.34

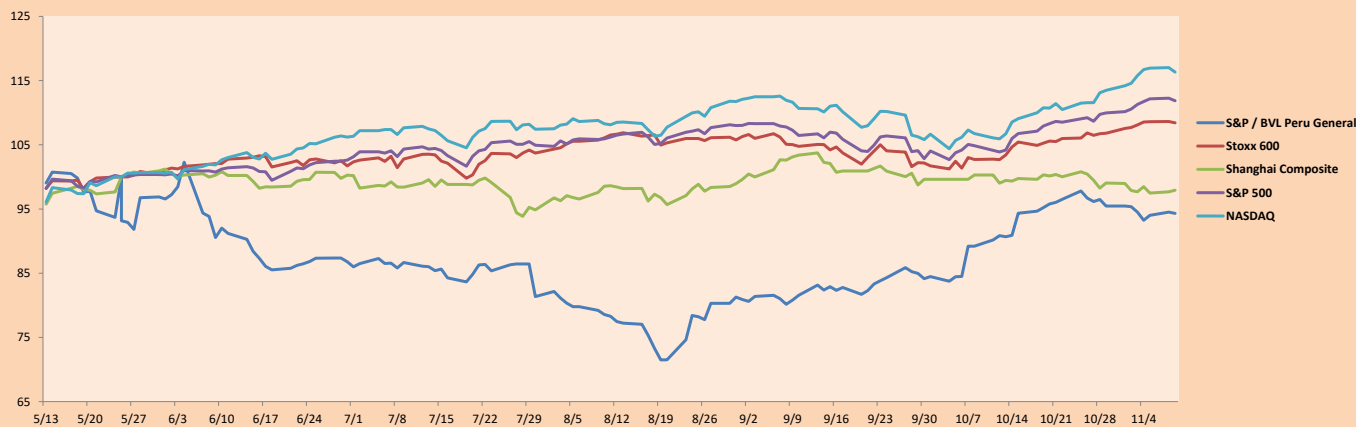
S&P/BVLConstructionTRPEN

*Legend: Variation 1D: 1 Day; 5D: 5 Days, 1M: 1 Month; YTD: Var.% 12/31/20 to date

Correlation Graph of Returns of Mining Index against Metallic Index of London (3 months)



Indices (6 months)



Base: 25/05/21=100
Source: Bloomberg

Capital Market Laboratory Coordinator: Economist Bruno Bellido
Collaboration: Alonso García, Ariam Loayza, Miguel Solimano and Jairo Valverde
email: pulsohorsatil@ulima.edu.pe
facebook: www.facebook.com/pulsohorsatil.ul

SOVEREIGN RATING

RISK RATINGS

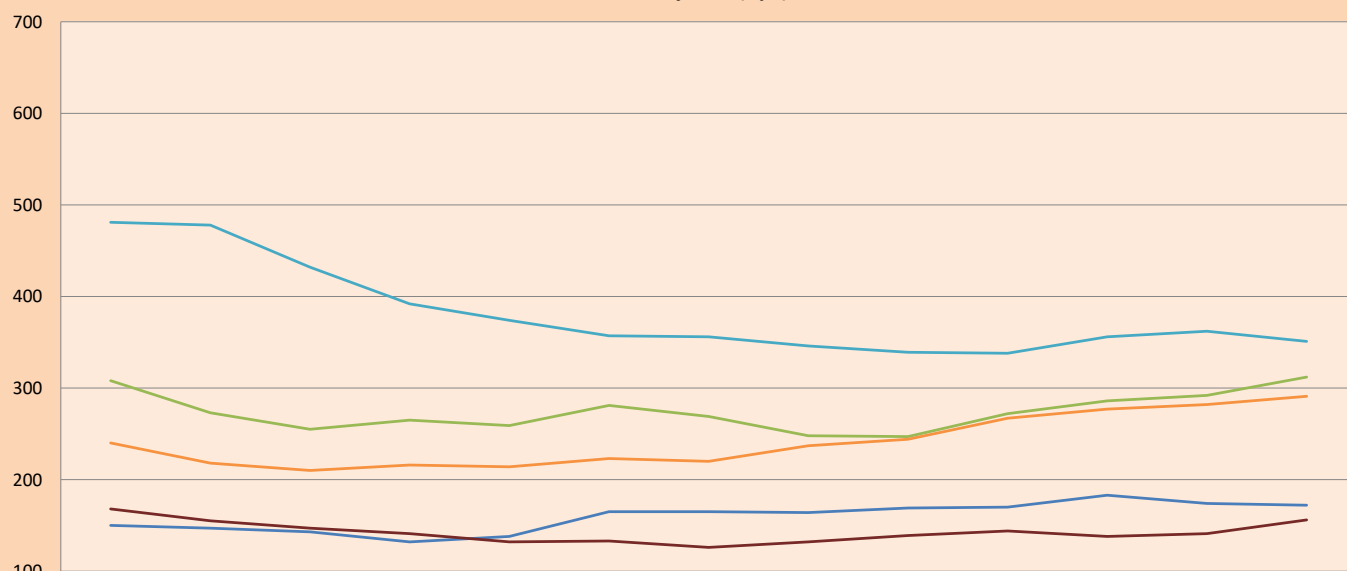
Moody's	S&P	Fitch	
Aaa	AAA	AAA	Prime
Aa1	AA+	AA+	High credit quality
Aa2	AA	AA	
Aa3	AA-	AA-	
A1	A+	A+	Medium-high grade, with low credit risk
A2	A	A	
A3	A-	A-	
Baa1	BBB+	BBB+	Moderate Credit Risk
Baa2	BBB	BBB	
Baa3	BBB-	BBB-	
Ba1	BB+	BB+	It has speculative elements and it is subject to substantial credit risk
Ba2	BB	BB	
Ba3	BB-	BB-	
B1	B+	B+	It is considered speculative and it has high credit risk
B2	B	B	
B3	B-	B-	
Caa1	CCC+		Bad credit conditions and it is subject to high credit risk
Caa2	CCC		
Caa3	CCC-		
Ca	CC	CCC	Very close to default or in default
	C		
C	D	DDD	

Source: Bloomberg

Latin America Credit Rating			
Clasificadora de riesgo			
Country	Moody's	Fitch	S&P
Peru	Baa1	BBB	BBB+
México	Ba2	BB-	BB-
Venezuela	C	WD	NR
Brazil	Ba2	BB-	BB-
Colombia	Baa2	BB+	BB+
Chile	A1	A-	A
Argentine	Ca	WD	CCC+
Panama	Baa2	BBB-	BBB

Source: Bloomberg

LATAM Country Risk (bps)



	Oct-20	Nov-20	Dic-20	Ene-21	Feb-21	Mar-21	Abr-21	May-21	Jun-21	Jul-21	Ago-21	Set-21	Oct-21
Perú	150	147	143	132	138	165	165	164	169	170	183	174	172
Brasil	308	273	255	265	259	281	269	248	247	272	286	292	312
México	481	478	432	392	374	357	356	346	339	338	356	362	351
Colombia	240	218	210	216	214	223	220	237	244	267	277	282	291
Chile	168	155	147	141	132	133	126	132	139	144	138	141	156

Source: BCRP

Capital Market Laboratory Coordinator: Economist Bruno Bellido
Collaboration: Alonso García, Ariam Loayza, Miguel Solimano y Jairo Valverde
email: pulsobursatil@ulima.edu.pe
facebook: www.facebook.com/pulsobursatil.ul