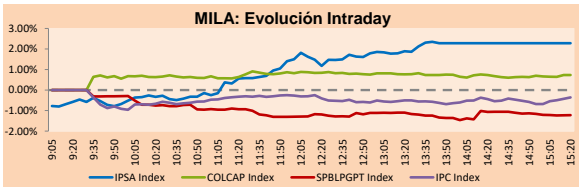


MILA

Lima, december 15, 2021

Main Indexes	Close	1 D	5 D	1 M	YTD	Cap. Burs. (US\$ bill)
▲ IPSA (Chile)	4,271.40	2.20%	-2.82%	-2.53%	2.25%	92.37
▲ IGPA (Chile)	21,340.15	1.84%	-2.94%	-3.07%	1.58%	110.36
▲ COLSC (Colombia)	947.09	-0.13%	-0.16%	-2.20%	-10.57%	4.24
▲ COLCAP (Colombia)	1,375.20	1.21%	-2.46%	1.38%	-4.36%	74.43
▼ S&P/BVL (Perú)*	19,890.55	-1.13%	-3.07%	-3.85%	-4.47%	94.78
▼ S&P/BVL SEL (Perú)	529.73	-1.03%	-1.87%	-2.79%	-3.93%	85.70
▼ S&P/BVL LIMA 25	28,954.96	-1.11%	-0.30%	-0.13%	14.91%	93.56
▼ IPC (México)	51,163.66	-0.15%	0.21%	-0.52%	16.10%	307.08
▲ S&P MILA 40	434.05	0.41%	-4.86%	-7.24%	-18.81%	6,452.30

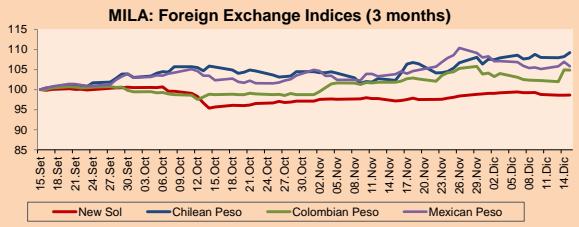
*Legend: Variation 1D: 1 day; 5D: 5 days; 1M: 1 Month; YTD: Var% 12/31/20 to date



Source: Bloomberg

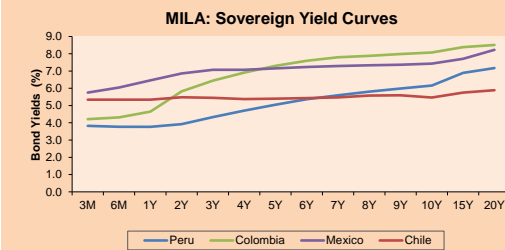
Currency	Price	1D*	5D*	30 D*	YTD*
- Sol (PEN)	4.0535	0.00%	-0.58%	1.52%	12.04%
▲ Chilean Peso (CLP)	851.65	0.94%	1.27%	6.77%	19.65%
▼ Colombian Peso (COP)	4,000.10	-0.07%	2.42%	2.97%	16.63%
▼ Mexican Peso (MXN)	21.01	-1.05%	0.37%	1.87%	5.51%

*Legend: Variation 1D: 1 day; 5D: 5 days; 1M: 1 Month; YTD: Var% 12/31/20 to date



Base: 15/09/21=100
Source: Bloomberg

Fixed Income	Currency	Price	Bid Yield (%)	Ask Yield (%)	Duration
PERU 7.35 07/21/25	USD	119.534	1.79	1.65	3.17
PERU 4.125 08/25/27	USD	110.312	2.24	2.14	5.08
PERU 8.75 11/21/33	USD	156.275	3.11	3.05	8.44
PERU 6.55 03/14/37	USD	136.77	3.46	3.40	10.04
PERU 5.625 11/18/2050	USD	141.073	3.40	3.37	16.65
CHILE 2.25 10/30/22	USD	101.473	0.79	0.31	0.86
CHILE 3.125 01/21/26	USD	105.544	1.78	1.66	3.83
CHILE 3.625 10/30/42	USD	107.133	3.18	3.13	15.03
COLOM 11.85 03/09/28	USD	151.749	2.79	2.71	4.78
COLOM 10.375 01/28/33	USD	142.584	5.36	5.17	7.24
COLOM 7.375 09/18/37	USD	117.504	5.71	5.64	9.74
COLOM 6.125 01/18/41	USD	104.666	5.75	5.69	11.25
MEX 4 10/02/23	USD	104.666	5.753	5.687	11.25
MEX5.55 01/45	USD	119.953	4.22	4.17	13.79



Source: Bloomberg

Equity

Largest gains	Exchange	Currency	Price	▲%
ITAU CORPBANCA	Chile	CLP	1.73	5.49
EMPRESAS COPEC	Chile	CLP	6300.00	5.18
CMPC	Chile	CLP	1380.00	4.94
GRUPO ARGOS SA	Colombia	COP	13860.00	3.82
CENCOSUD SA	Chile	CLP	1303.90	3.66

Per Turnover	Exchange	Amount (US\$)
WALMART DE MEXIC	Mexico	88,956,749
GRUPO F BANORT-O	Mexico	56,944,385
SOQUIMICH-B	Chile	45,407,151
AERO DEL PACIF-B	Mexico	27,062,372
CEMEX SAB-CPO	Mexico	26,519,966

Largest losses	Exchange	Currency	Price	▼%
SOUTHERN COPPER	Peru	USD	56.8	-4.41
GRUPO TELEV-CPO	Mexico	MXN	38.96	-2.94
COCA-COLA FEMSA	Mexico	MXN	105.4	-2.90
BUENAVENTURA-ADI	Peru	USD	6.74	-2.46
ALICORP-C	Peru	PEN	5.48	-2.14

Per Volume	Exchange	Volume
ITAU CORPBANCA	Chile	3,050,552,573
BANCO DE CHILE	Chile	283,743,645
BANCO SANTANDER	Chile	139,436,670
CEMEX SAB-CPO	Mexico	42,695,321
ENEL AMERICAS SA	Chile	39,171,259

MILA

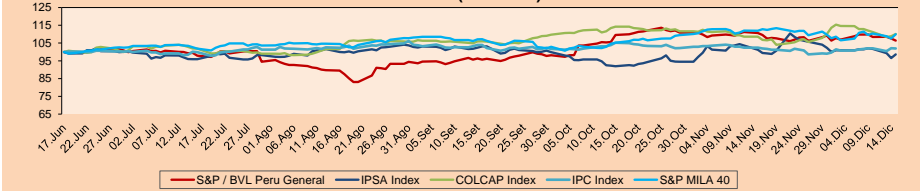
Peru: The BVL General Index ended today's session with a negative result of -1.13%. The index maintains a negative annual cumulative trend of -4.47% in local currency, while the dollar-adjusted performance amounted to -14.74%. Then, the S&P / BVL Peru SEL varied by -1.03% while the S&P / BVL LIMA 25 by -1.11%. The spot PEN reached 5/ 4.0534. Headline: Peruvian economy slows down for the sixth consecutive month, according to INEI.

Chile: The IPSA index ended the day with a positive return +2.20%. The most benefited sectors of the day were Energy (+5.18%) and Communication Services (+5.18%). The best performing stocks were Itau CorpBanca Chile SA (+5.49%) and Empresas COPEC SA (+5.18%). Headline: The Chilean labor market has recovered 70% of the jobs lost during the pandemic.

Colombia: The COLCAP index ended the day with a positive return of +1.21%. The sectors that benefited the most during the day were Materials (+2.08%) and Utilities (+1.73%). The best performing stocks were Grupo Argos SA (+3.82%) and BANCOLOMBIA SA (+3.43%). Headline: Building sector GDP will grow 17% in 2022, says Camacol.

Mexico: The IPC index closed the day with a negative return of -0.15%. The most affected sectors of the day were Consumer Discretionary (-1.77%) and Real Estate (-1.10%). The worst performing stocks were Coca-Cola Femsa SAB de CV (-2.81%) and Grupo Televisa SAB (-2.79%). Headline: Banxico must take a firm hand against inflation, say Finance Executives.

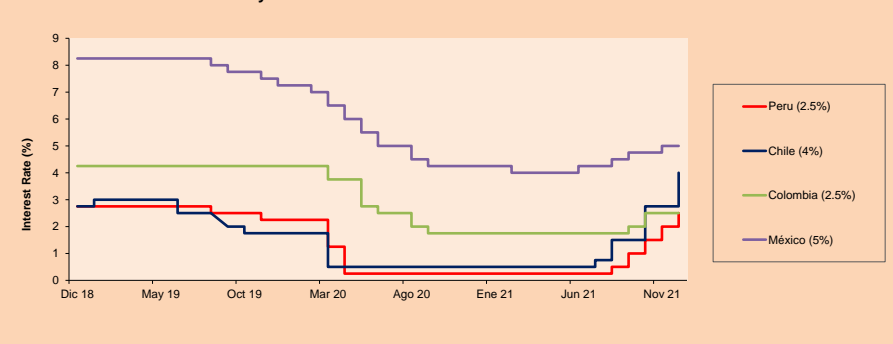
MILA: Stock Indices (6 months)



Base: 18/06/21=100
Source: Bloomberg

ETFs	Curr.	Close	1D	5D	30 D	YTD	Exchange
▼ iShares MSCI All Peru Caped Index Fund	USD	27.14	-1.56%	-6.12%	-10.19%	-21.74%	NYSE Arca
▲ iShares MSCI All Chile Caped Index Fund	USD	23.9	2.88%	-7.04%	-10.65%	-20.89%	Cboe BZX
▲ Global X MSCI Colombia	USD	9.7858	0.10%	-7.24%	-5.22%	-13.86%	NYSE Arca
▲ iShares MSCI Mexico Capped	USD	47.34	1.05%	-1.11%	-2.41%	10.12%	NYSE Arca
▼ iShares MSCI Emerging Markets	USD	48.34	-0.29%	-3.86%	-6.73%	-6.44%	NYSE Arca
▼ Vanguard FTSE Emerging Markets	USD	49.17	-0.36%	-2.42%	-5.41%	-1.88%	NYSE Arca
▼ iShares Core MSCI Emerging Markets	USD	59.03	-0.24%	-4.64%	-7.26%	-4.85%	NYSE Arca
▼ iShares JP Morgan Emerging Markets Bonds	USD	61.76	-0.19%	-2.17%	-4.07%	1.11%	Cboe BZX
▼ Morgan Stanley Emerging Markets Domestic	USD	5.45	-0.91%	-2.33%	-7.16%	-13.35%	New York

MILA: Policy Rate



Source: Bloomberg

WORLD

Main Indices	Close	1 D*	5 D*	1 M*	YTD*	Market Cap. (US\$ Mill.)
▲ Dow Jones (USA)	35,927.43	1.08%	0.48%	-0.44%	17.39%	11,574,812
▲ Standard & Poor's 500 (EEUU)	4,709.85	1.63%	0.18%	0.58%	25.39%	40,908,167
▲ NASDAQ Composite (USA)	15,565.58	2.15%	-1.40%	-1.82%	20.77%	25,906,101
▲ Stoxx EUROPE 600 (Europe)	470.76	0.26%	-1.38%	-3.78%	17.98%	11,601,545
▲ DAX (Germany)	15,476.35	0.15%	-1.34%	-4.75%	12.81%	1,469,312
▼ FTSE 100 (United Kingdom)	7,170.75	-0.66%	-2.27%	-2.13%	10.99%	1,552,767
▲ CAC 40 (France)	6,927.63	0.47%	-1.24%	-3.15%	24.79%	2,042,188
▼ IBEX 35 (Spain)	8,275.00	-1.24%	-2.40%	-8.46%	2.49%	493,751
▼ MSCI AC Asia Pacific Index	191.66	-0.29%	-1.63%	-4.56%	-4.13%	25,785,708
▼ HANG SENG (Hong Kong)	23,420.76	-0.91%	-2.40%	-8.92%	-13.99%	3,878,278
▼ SHANGHAI SE Comp. (China)	3,647.63	-0.38%	0.28%	3.57%	5.03%	7,520,232
▲ NIKKEI 225 (Japan)	28,459.72	0.10%	-1.39%	-4.52%	3.70%	4,104,808
▲ S&P/ASX 200 (Australia)	7,327.08	-0.70%	-1.06%	-1.38%	11.10%	1,680,785
▼ KOSPI (South Korea)	2,989.39	-0.15%	0.21%	-0.26%	4.03%	1,795,392

*Legend: Variation 1D: 1 Day; 5D: 5 Days; 1M: 1 Month; YTD: Var. % 12/31/20 to date

Equity

Germany (Stocks from DAX Index)

Largest gains	Curr.	Price	▲ %	Exchange	Largest losses	Curr.	Price	▼ %	Exchange
MRK GY	EUR	225.4	1.58	Xetra	AIR GY	EUR	100.06	-2.38	Xetra
PUM GY	EUR	104.55	1.41	Xetra	HFG GY	EUR	69	-2.02	Xetra
MUV2 GY	EUR	250.35	1.05	Xetra	DHER GY	EUR	95.14	-1.88	Xetra
LIN GY	EUR	298.9	1.05	Xetra	MTX GY	EUR	165	-1.79	Xetra

Europe (Stocks from STOXX EUROPE 600)

Largest gains	Curr.	Price	▲ %	Exchange	Largest losses	Curr.	Price	▼ %	Exchange
EVT GY	EUR	44.58	7.55	Xetra	SCP FP	EUR	146	-8.12	EN Paris
ERF FP	EUR	108.28	6.18	EN Paris	THG LN	Gbp	167.2	-7.06	Londres
DARK LN	Gbp	398.6	6.01	Londres	CCL LN	Gbp	1184	-5.84	Londres
DIM FP	EUR	467.3	4.38	EN Paris	FTI FP	EUR	5.066	-5.77	EN Paris

Global Overview:

United States:

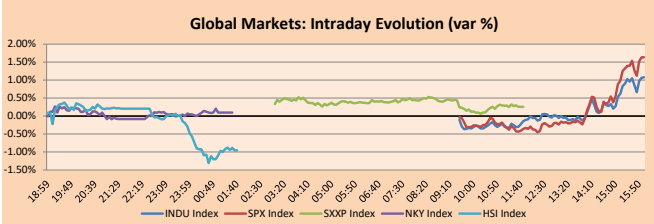
The U.S. market closed with positive returns after the Fed announced that it would end its bond purchases in March, as it moves away from policies enacted at the beginning of the healthcare crisis. The DOW JONES index closed in positive territory as, following its two-day monetary policy meeting, the Fed signaled that its inflation target has been met, and its announcement on ending bond purchases paved the way for three quarter-point interest rate hikes by the end of 2022. Meanwhile, the S&P 500 finished higher as the SEC proposed tightening the legal protection mechanism that allows insiders to trade a company's stock, as well as other rules to improve the resilience of money market funds, along with measures to increase transparency around share buybacks and complex derivatives. Finally, the NASDAQ index rose to its session following the Fed's announcements, which were in line with expectations, due to the fact that, by accelerating its tapering, it shaped sentiment that inflation is under control. Thus, it increased the credibility of the institution and that is, on balance, neutral to positive for the markets. Thus, DOW JONES +1.08%; S&P 500 +1.63%; NASDAQ +2.15% ended the day with positive results.

Europe:

Major European indices ended the session with mostly positive returns amid uncertainty and caution surrounding the Federal Reserve's last meeting of the year on U.S. monetary policy. Which is expected to taper bond purchases and interest rate hikes. However, the meeting will take place at 2 p.m. when European markets end trading for the day. The pan-European STOXX 600 index closed +0.26%; amid the Federal Reserve's upcoming new forecasts on the economy, inflation, and interest rates. The UK market ended lower as UK inflation rose to its highest level in more than a decade in the month of November, exceeding 5%. Meanwhile, the German DAX index ended with positive returns, despite Germany's new health minister, Karl Lauterbach, mentioning that he is in contact with COVID-19 vaccine manufacturers to increase vaccine deliveries after discovering that the country has low supplies for early next year. Similarly, France's CAC40 closed with positive changes; however, France's consumer prices rose by 2.8% in November, compared to a 2.6% increase in October. Thus, FTSE 100 -0.66%; CAC 40 +0.47%; DAX +0.15%; STOXX 600 +0.26% ended with negative performances.

Asia:

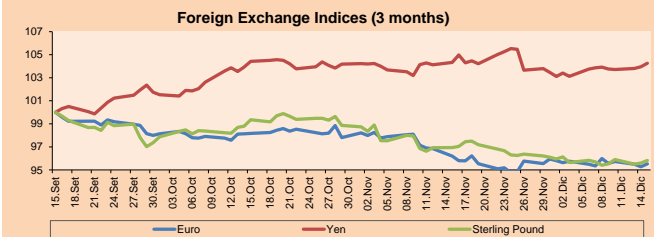
The main Asian indices closed with negative returns, since a decrease in the purchase of assets by the FED was expected, which will be indicated today. The Hong Kong market closes lower due to losses in biotech stocks after the media reported the imminent imposition of sanctions by the US on some companies in the sector. Likewise, the KOSPI of South Korea registered a slight increase, marked by waiting for the FOMC meeting to conclude. The most prominent stocks were Samsung Electronics +0.78% and SK Hynix +2.07%. On the other hand, the Japanese market closed in positive territory, after Toyota +2.15% announced that it will commit around \$70 billion in electrification for its line until 2030. Finally, the Australian market ended in negative territory. Pointsbet Holdings Ltd -4.61% was the worst performing share due to general weakness in the technology sector. Thus, NIKKEI +0.10%; HANG SENG -0.91%; CSI 300 -0.87%; S&P/ASX 200 -0.70%; KOSPI +0.05%; SHANGHAI COMPOSITE -0.38% ended with negative returns.



Source: Bloomberg

Currency	Price	1 D*	5 D*	1 M*	YTD*
▲ Euro	1.1289	0.27%	-0.48%	-0.69%	-7.59%
▲ Yen	114.0400	0.30%	0.33%	-0.07%	10.45%
▲ Sterling Pound	1.3262	0.23%	0.44%	-1.15%	-2.98%
▲ Yuan	6.3675	0.00%	0.37%	-0.24%	-2.45%
▲ Hong Kong Dollar	7.8024	0.02%	0.06%	0.18%	0.64%
▼ Brazilian Real	5.6853	-0.07%	2.81%	4.20%	9.36%
▼ Argentine Peso	101.8250	0.06%	0.40%	1.56%	21.01%

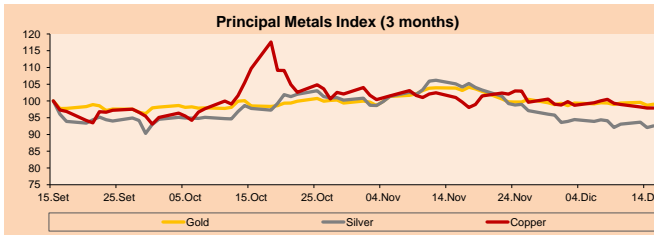
*Legend: Variation 1D: 1 Day; 5D: 5 Days; 1M: 1 Month; YTD: Var. % 12/31/20 to date



Base: 15/09/21=100
Source: Bloomberg

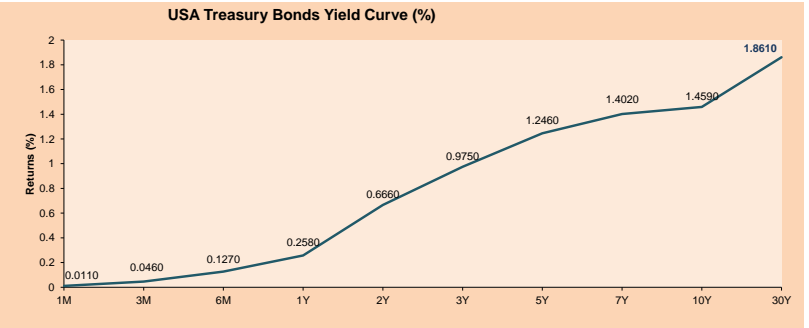
Commodities	Close	1 D*	5 D*	1 M*	YTD*
▲ Oro (US\$ Oz. T) (LME)	1,776.92	0.34%	-0.34%	-4.61%	-6.40%
▲ Plata (US\$ Oz. T) (LME)	22.07	0.58%	-1.61%	-11.93%	-16.40%
- Cobre (US\$ TM) (LME)	9,406.50	0.00%	-2.57%	-3.08%	21.39%
- Zinc (US\$ TM) (LME)	3,314.25	0.00%	-0.74%	2.45%	21.43%
▲ Petróleo WTI (US\$ Barril) (NYM)	70.87	0.20%	-2.06%	-11.13%	49.23%
- Estarño (US\$ TM) (LME)	39,034.00	0.00%	-2.18%	0.57%	90.00%
- Plomo (US\$ TM) (LME)	2,306.00	0.00%	-2.29%	-2.04%	16.72%
▼ Azúcar #11 (US\$ Libra) (NYB-ICE)	19.29	-1.83%	-2.67%	-2.28%	35.18%
▼ Café (US\$ TM) (NYB-ICE)	2,547.00	1.72%	3.12%	0.59%	2.29%
▲ Café Arabica (US\$ TM) (NYB-ICE)	237.30	0.06%	-2.83%	5.47%	74.17%

*Legend: Variación 1D: 1 Día; 5D: 5 Días; 1M: 1 Mes; YTD: Var. % 31/12/20 a la fecha



Base: 15/09/21=100
Source: Bloomberg

ETFs	Curr.	Close	1D	5D	30 D	YTD	Exchange
SPDR S&P 500 ETF TRUST	USD	470.60	1.56%	0.23%	0.88%	25.87%	NYSE Arca
ISHARES MSCI EMERGING MARKET	USD	48.34	-0.29%	-3.86%	-6.73%	-6.44%	NYSE Arca
ISHARES IBOXX HIGH YLD CORP	USD	86.81	0.38%	-0.01%	0.07%	-0.56%	NYSE Arca
FINANCIAL SELECT SECTOR SPDR	USD	38.97	0.28%	-0.31%	-2.94%	32.19%	NYSE Arca
VANECK GOLD MINERS ETF	USD	23.70	-1.38%	-5.88%	-14.90%	-17.55%	NYSE Arca
ISHARES RUSSELL 2000 ETF	USD	217.58	1.59%	-3.57%	-8.79%	10.98%	NYSE Arca
SPDR GOLD SHARES	USD	166.15	0.43%	-0.45%	-4.61%	-6.85%	NYSE Arca
ISHARES 20+ YEAR TREASURY BO	USD	149.25	-0.86%	0.58%	2.59%	-5.38%	NASDAQ GM
INVESCO QQQ TRUST SERIES 1	USD	397.05	2.28%	-0.64%	0.62%	26.55%	NASDAQ GM
ISHARES BIOTECHNOLOGY ETF	USD	151.90	2.21%	-0.51%	-0.84%	0.27%	NASDAQ GM
ENERGY SELECT SECTOR SPDR	USD	55.15	-0.49%	-3.68%	-4.96%	45.51%	NYSE Arca
PROSHARES ULTRA VIX ST FUTUR	USD	14.48	-10.45%	-8.30%	-3.14%	-86.40%	Cboe BZX
UNITED STATES OIL FUND LP	USD	51.62	1.37%	-1.53%	-7.94%	56.38%	NYSE Arca
ISHARES MSCI BRAZIL ETF	USD	28.23	0.32%	-9.78%	-8.52%	-23.85%	NYSE Arca
SPDR S&P OIL & GAS EXP & PR	USD	95.65	0.40%	-6.39%	-11.56%	63.50%	NYSE Arca
UTILITIES SELECT SECTOR SPDR	USD	70.72	1.64%	2.69%	4.72%	12.79%	NYSE Arca
ISHARES US REAL ESTATE ETF	USD	111.40	1.37%	-0.84%	0.64%	30.06%	NYSE Arca
SPDR S&P BIOTECH ETF	USD	113.39	4.25%	-2.83%	-8.48%	-19.46%	NYSE Arca
ISHARES IBOXX INVESTMENT GRA	USD	132.96	0.13%	0.16%	0.75%	-3.74%	NYSE Arca
ISHARES JP MORGAN US EMERGI	USD	108.93	-0.32%	-0.21%	-0.33%	-6.02%	NASDAQ GM
REAL ESTATE SELECT SECT SPDR	USD	50.03	1.48%	0.93%	3.24%	36.84%	NYSE Arca
ISHARES CHINA LARGE-CAP ETF	USD	36.59	-2.89%	-5.84%	-10.99%	-21.19%	NYSE Arca
CONSUMER STAPLES SPDR	USD	75.97	1.01%	4.41%	3.80%	12.63%	NYSE Arca
VANECK JUNIOR GOLD MINERS	USD	38.95	-1.49%	-7.22%	-18.74%	-28.19%	NYSE Arca
SPDR BLOOMBERG HIGH YIELD BO	USD	108.29	0.34%	-0.06%	-0.11%	-0.60%	NYSE Arca
VANGUARD REAL ESTATE ETF	USD	111.92	1.40%	-0.11%	1.34%	31.78%	NYSE Arca
GRAYSCALE BITCOIN TRUST BTC	USD	37.66	2.62%	-6.62%	-26.42%	17.69%	OTC US



Source: Bloomberg

LIMA

Stocks

Ticker	Currency	Price	1D*	5D*	30D*	YTD*	Frequency	Volume (US\$)	Beta	Dividend Yield (%)	Price Earning	Market Cap. (M US\$)	Economic Sector*	Index Weight
▼ ALICORC1 PE**	S/.	5.48	-0.13%	-0.16%	-2.20%	-10.57%	100.00%	231,011	0.82	15.24	11.28	1,153.35	Industrial	3.53%
▼ ATACOBC1 PE**	S/.	0.13	-6.52%	-6.52%	-6.52%	-6.52%	21.05%	1,749	1.10	0.00	-	30.07	Mining	1.02%
▼ BACKUSI1 PE**	S/.	22.10	-0.72%	0.45%	12.76%	9.68%	94.74%	57,620	0.72	4.23	8.15	7,074.69	Industrial	0.82%
▼ BAP PE**	US\$	109.02	-0.61%	-6.74%	-13.95%	-32.12%	100.00%	170,224	1.26	1.12	-	10,289.56	Diverse	5.82%
▼ BVN PE**	US\$	6.74	-2.46%	-10.49%	-13.37%	-43.83%	94.74%	1,460,495	1.28	0.00	-	1,854.59	Mining	5.88%
▲ CASAGRC1 PE**	S/.	8.35	2.96%	4.38%	28.86%	75.79%	94.74%	47,406	1.07	11.80	5.75	173.52	Agricultural	1.31%
▼ BBVAC1 PE**	S/.	1.76	-4.86%	-2.22%	-13.73%	-16.03%	94.74%	89,221	0.90	2.58	12.14	2,934.48	Finance	2.85%
▼ CORARE1 PE**	S/.	1.75	-2.78%	1.74%	-2.23%	96.63%	100.00%	59,287	0.91	15.75	2.67	543.47	Industrial	1.72%
▼ CPACASC1 PE**	S/.	4.76	-0.83%	-1.86%	-10.19%	-10.19%	100.00%	213,874	0.65	16.60	34.00	545.44	Industrial	2.38%
▼ CVERDEC1 PE**	US\$	38.40	-1.51%	11.95%	55.78%	83.56%	100.00%	1,816,007	1.26	1.49	13.99	13,442.15	Mining	5.25%
- ENGEPEC1 PE**	S/.	2.20	0.00%	-1.35%	-5.17%	-7.17%	36.84%	8,448	0.69	0.00	9.58	1,300.17	Public Services	1.44%
- ENDISPC1**	S/.	4.27	0.00%	0.00%	-5.53%	-20.93%	21.05%	10,530	0.80	0.00	8.72	672.67	Public Services	0.98%
- FERREY1 PE**	S/.	1.89	0.00%	2.16%	-2.07%	8.62%	100.00%	660,075	1.05	10.41	5.32	454.93	Diverse	4.90%
▲ AENZAC1 PE**	S/.	1.43	-2.72%	-4.67%	-10.06%	-17.82%	84.21%	88,116	1.07	0.00	-	307.60	Diverse	4.05%
▲ IFS PE**	US\$	24.16	3.42%	-2.62%	-2.58%	-21.91%	100.00%	23,456	1.19	5.88	5.89	2,789.22	Diverse	7.22%
▼ INRETC1 PE**	US\$	33.00	-1.49%	-3.23%	-13.61%	-15.82%	100.00%	138,996	0.87	4.13	71.55	3,392.64	Diverse	5.28%
- LUSURC1 PE**	S/.	14.00	0.00%	-0.71%	-3.45%	-45.10%	78.95%	40,181	#N/A N/F	0.00	13.83	1,681.84	Public Services	1.81%
▲ MINSUR1 PE**	S/.	3.86	0.52%	3.76%	21.00%	108.65%	100.00%	20,065	0.95	17.81	2.97	2,745.68	Mining	3.09%
▼ PML PE**	US\$	0.14	-3.57%	-3.57%	-3.57%	27.36%	21.05%	4,050	1.25	0.00	-	35.69	Mining	2.12%
▼ SCCO PE**	US\$	56.80	-4.41%	-5.43%	-8.14%	-13.81%	89.47%	34,958	0.88	5.63	13.51	43,911.02	Mining	2.14%
▼ SIDERC1 PE**	S/.	1.67	-0.60%	1.83%	4.38%	54.92%	100.00%	11,940	0.86	21.20	3.98	288.39	Industrial	1.43%
▼ TV PE**	US\$	1.19	-4.80%	7.21%	-25.63%	-19.05%	73.68%	35,449	1.26	0.00	-	117.70	Mining	2.93%
- UNACEM1 PE**	S/.	2.38	0.00%	12.26%	42.51%	53.55%	100.00%	344,075	1.02	2.77	9.96	1,067.51	Industrial	3.00%
▼ VOLCABC1 PE**	S/.	0.57	-1.72%	-1.72%	-14.93%	9.62%	100.00%	215,942	1.58	0.00	-	1,653.19	Mining	5.90%
- NEXAPEC1 PE**	S/.	3.29	0.00%	-7.58%	-4.36%	16.25%	63.16%	5,962	1.16	0.00	8.74	1,029.83	Mining	1.56%

Quantity of shares: 25
Source: Bloomberg, Economatika
* Bloomberg Industry Classification System
** PER is used in the stock market and original currency of the instrument
*Legend: Variation 1D: 1 Day; 5D: 5 Days, 1M: 1 Month; YTD: Var.% 12/31/20 to date

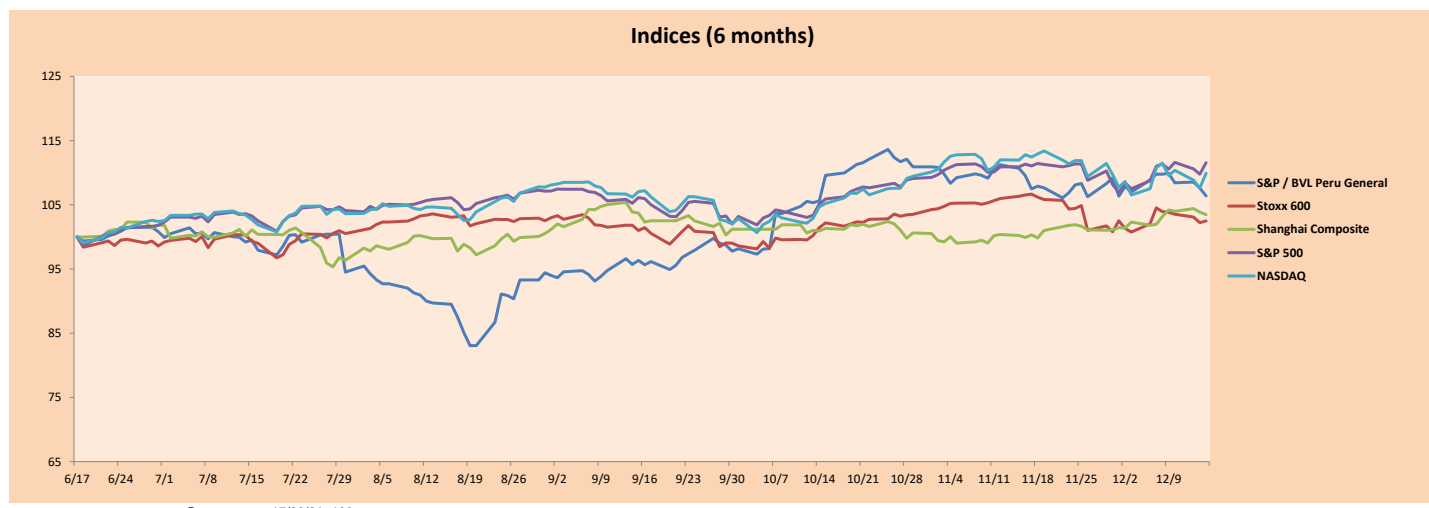
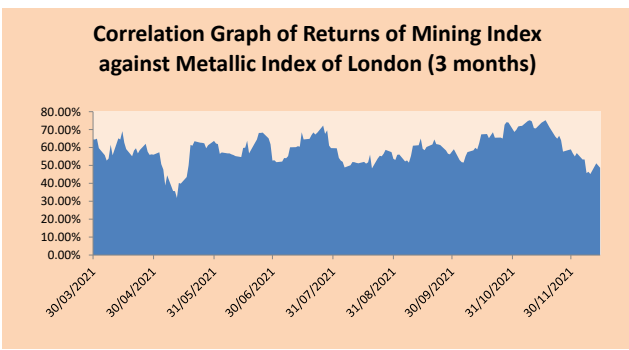
Up 3
Down 16
Hold 6

Sectorial Indices

	Close	1D*	5D*	30D*	YTD*	Beta
▼ S&P/BVLMining	388.66	-3.40%	-4.84%	-3.20%	-0.33%	0.88
▼ S&P/BVLConsumer	1,081.01	-1.46%	-2.14%	-7.72%	-0.70%	0.75
▼ S&P/BVLIndustrials	253.40	-0.55%	3.42%	7.42%	32.98%	0.79
▼ S&P/BVLFinancials	815.84	-0.39%	-6.39%	-11.18%	-21.09%	1.22
▼ S&P/BVLConstruction	284.29	-0.72%	3.84%	10.92%	35.95%	0.71
▲ S&P/BVLPublicSvcs	565.41	0.87%	-0.77%	-3.60%	-7.93%	0.27
▲ S&P/BVLElectricUtil	551.98	0.87%	-0.77%	-3.60%	-7.93%	0.27

S&P/BVLConstructionTRPEN

*Legend: Variation 1D: 1 Day; 5D: 5 Days, 1M: 1 Month; YTD: Var.% 12/31/20 to date



Base: 17/06/21=100
Source: Bloomberg

Capital Market Laboratory Coordinator: Economist Bruno Bellido
Collaboration: Alonso García, Ariam Loayza, Miguel Solimano y Jairo Valverde
email: pulsohorsatil@ulima.edu.pe
facebook: www.facebook.com/pulsohorsatil.ul

The content of this document is just for informational purposes. The information and opinions expressed should not be consider as recommendations for future decisions. Under any circumstances, the Capital Market Laboratory of University of Lima will be responsible for the use of the statements in this document.

SOVEREIGN RATING

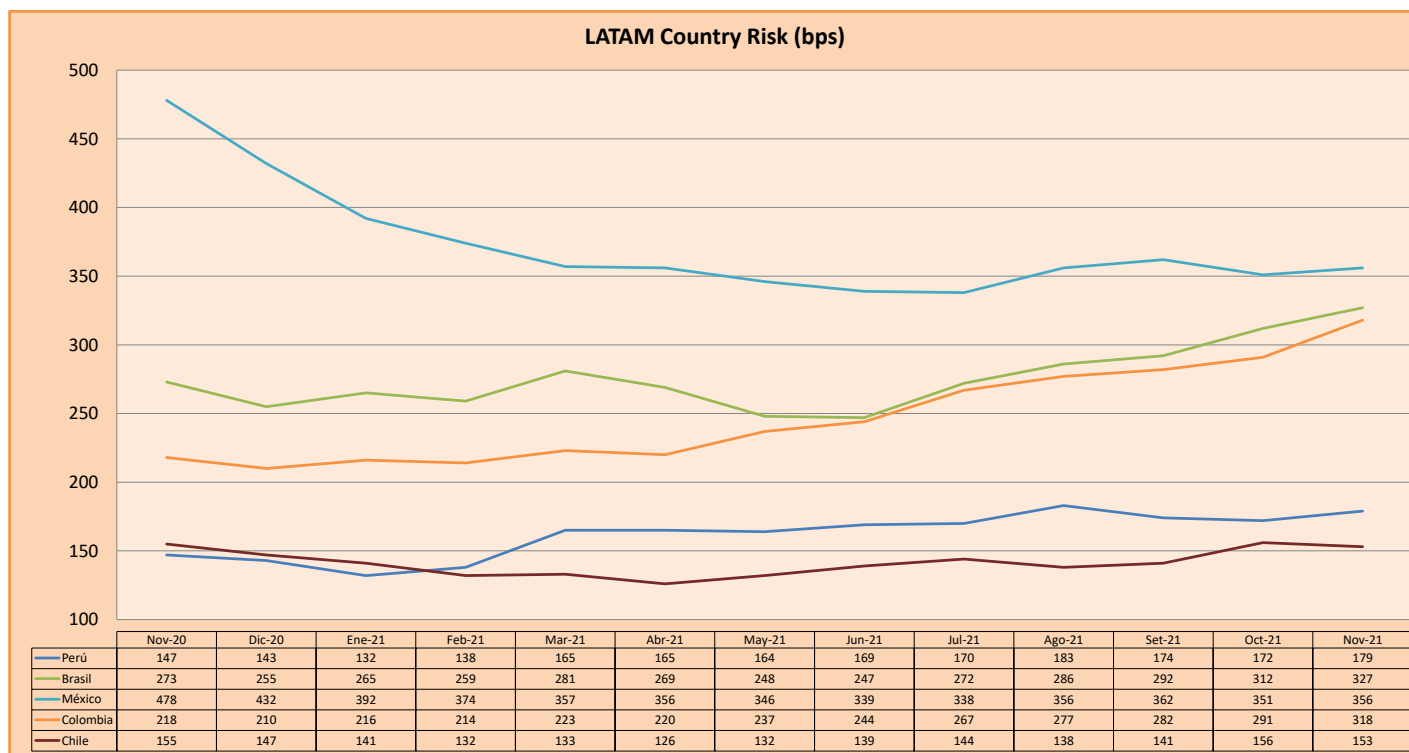
RISK RATINGS

Moody's	S&P	Fitch		
Aaa	AAA	AAA	Prime	
Aa1	AA+	AA+	High credit quality	
Aa2	AA	AA		
Aa3	AA-	AA-		
A1	A+	A+	Medium-high grade, with low credit risk	
A2	A	A		
A3	A-	A-		
Baa1	BBB+	BBB+	Moderate Credit Risk	
Baa2	BBB	BBB		
Baa3	BBB-	BBB-		
Ba1	BB+	BB+	It has speculative elements and it is subject to substantial credit risk	
Ba2	BB	BB		
Ba3	BB-	BB-		
B1	B+	B+	It is considered speculative and it has high credit risk	
B2	B	B		
B3	B-	B-		
Caa1	CCC+	CCC	Bad credit conditions and it is subject to high credit risk	
Caa2	CCC			
Caa3	CCC-			
Ca	C	DDD	Very close to default or in default	
C	D			DD
				D

Source: Bloomberg

Latin America Credit Rating			
Clasificadora de riesgo			
Country	Moody's	Fitch	S&P
Peru	Baa1	BBB	BBB+
México	Ba2	BB-	BB-
Venezuela	C	WD	NR
Brazil	Ba2	BB-	BB-
Colombia	Baa2	BB+	BB+
Chile	A1	A-	A
Argentina	Ca	WD	CCC+
Panama	Baa2	BBB-	BBB

Source: Bloomberg



Source: BCRP

Capital Market Laboratory Coordinator: Economist Bruno Bellido
Collaboration: Alonso García, Ariam Loayza, Miguel Solimano y Jairo Valverde
email: pulsobursatil@ulima.edu.pe
facebook: www.facebook.com/pulsobursatil.ul