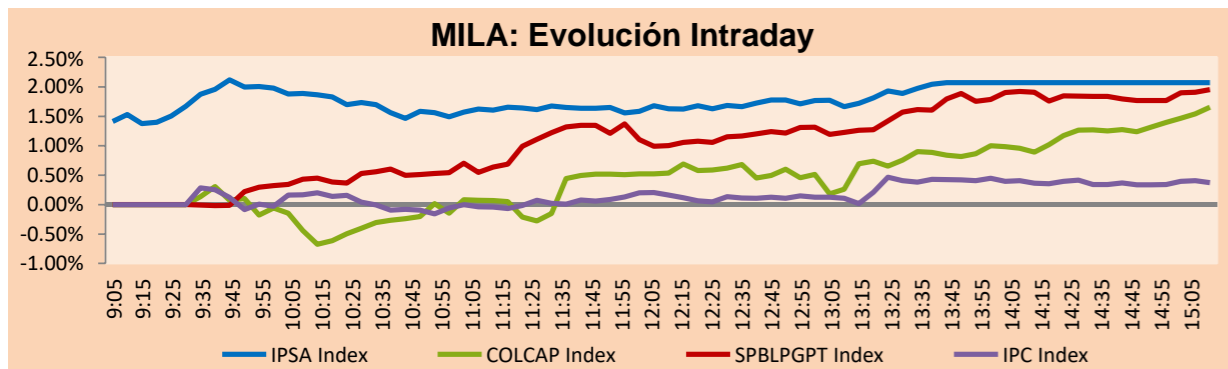


Lima, 11 January 11, 2022

MILA

Main Indexes	Close	1 D	5 D	1 M	YTD	Cap. Burs. (US\$ bill)
▲ IPSA (Chile)	4,394.91	2.25%	2.33%	-0.25%	2.01%	97.08
▲ IGPA (Chile)	21,945.10	2.27%	2.10%	-0.34%	1.75%	116.89
▲ COLSC (Colombia)	974.30	0.18%	-0.48%	3.04%	0.12%	4.28
▲ COLCAP (Colombia)	1,422.57	2.03%	0.53%	2.41%	0.82%	76.40
▲ S&P/BVL (Perú)*	22,786.60	1.94%	5.69%	12.40%	7.93%	105.15
▲ S&P/BVL SEL (Perú)	606.91	1.82%	5.26%	13.09%	7.69%	95.99
▲ S&P/BVL LIMA 25	33,564.41	0.98%	7.27%	15.45%	10.87%	103.88
▲ IPC (México)	53,061.92	0.43%	0.09%	3.61%	-0.40%	321.27
▲ S&P MILA 40	468.36	3.65%	4.46%	3.64%	5.28%	214.00

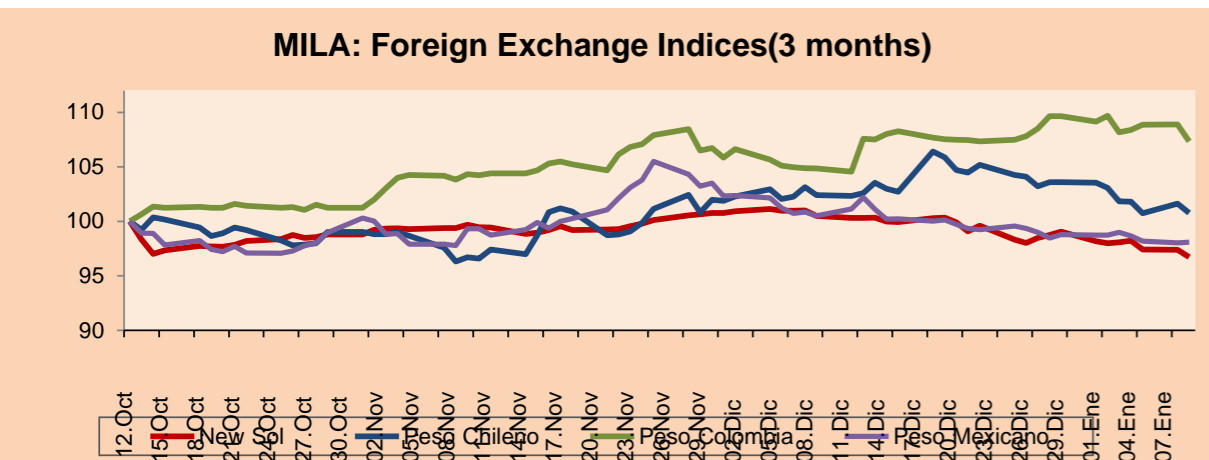
* Cap. Bursátil del cierre anterior *Leyenda: Variación 1D: 1 Día; 5D: 5 Días; 1M: 1 Mes; YTD: Var. % 31/12/21 a la fecha



Source: Bloomberg

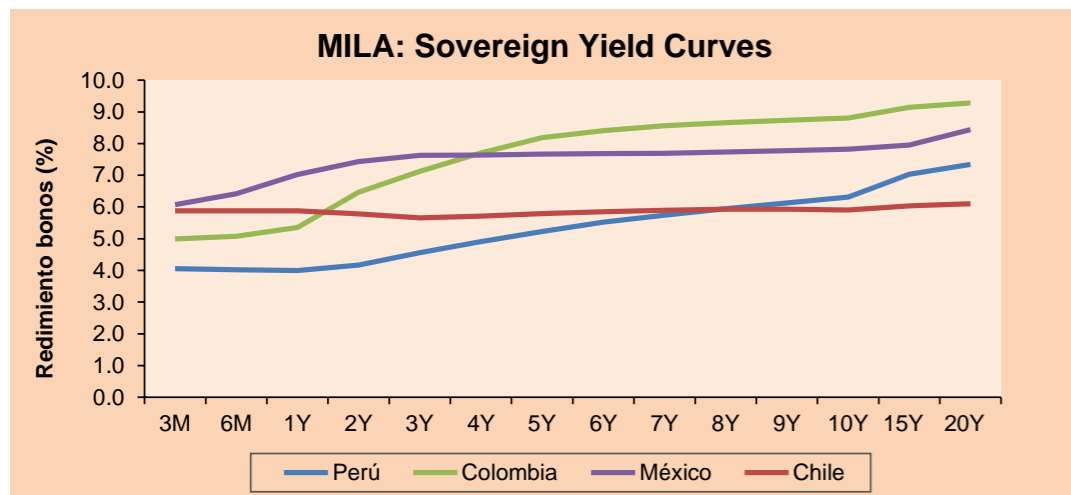
Currency	Price	1D*	5D*	30 D*	YTD*
▼ Sol (PEN)	3.9068	-0.68%	-1.31%	-3.76%	-2.31%
▼ Peso Chileno (CLP)	828.850	-0.85%	-2.22%	-1.59%	-2.72%
▼ Peso Colombiano (COP)	3,993.25	-1.45%	-2.16%	-2.36%	-2.13%
▲ Peso Mexicano (MXN)	20.382	0.06%	-0.66%	-2.40%	-0.72%

*Legend: Variation 1D: 1 day; 5D: 5 days; 1M: 1 month; YTD: Var. % 31/12/21 to date



Base: 12/10/21=100
Source: Bloomberg

Renta Fija	Moneda	Precio	Bid Yield (%)	Ask Yield (%)	Duration
Instumento					
PERU 7.35 07/21/25	USD	118.263	2.02	1.90	3.09
PERU 4.125 08/25/27	USD	108.688	2.51	2.41	5.00
PERU 8.75 11/21/33	USD	152.433	3.38	3.33	8.31
PERU 6.55 03/14/37	USD	131.953	3.80	3.74	9.85
PERU 5.625 11/18/2050	USD	134.568	3.69	3.66	16.19
CHILE 2.25 10/30/22	USD	101.165	1.05	0.79	
CHILE 3.125 01/21/26	USD	104.649	1.97	1.87	3.75
CHILE 3.625 10/30/42	USD	102.017	3.51	3.47	14.73
COLOM 11.85 03/09/28	USD	150.871	2.86	2.74	4.70
COLOM 10.375 01/28/33	USD	140.164	5.55	5.41	7.09
COLOM 7.375 09/18/37	USD	114.083	6.02	5.94	9.53
COLOM 6.125 01/18/41	USD	100.982	6.07	6.01	10.96
MEX 4 10/02/23	USD	105.166	1.07	0.86	1.66
MEX5.55 01/45	USD	115.976	4.456	4.415	13.47



Source: Bloomberg

Equity

Largest gains	Exchan	Currency	Price	▲ %
SOQUIMICH-B	Chile	CLP	43168.00	6.98
FERREYCORP SAA	Peru	PEN	2.4	5.73
BUENAVENTURA-ADR	Peru	USD	7.96	5.43
CREDICORP LTD	Peru	USD	138.3	4.93
SURAMERICANA	Colombi	COP	30420.00	4.46

Per Turnover	Exchange	Amount (US\$)
GRUPO F BANORT-O	Mexico	57,752,772
CENCOSUD SA	Chile	44,483,537
AMERICA MOVIL-L	Mexico	37,618,193
FOMENTO ECON-UBD	Mexico	35,442,989
WALMART DE MEXIC	Mexico	35,369,453

Largest losses	Exchange	Currency	Price	▼ %
GRUPO F BANORT-O	Mexico	MXN	142.99	-2.16
AERO DEL SURES-B	Mexico	MXN	424.32	-2.07
CONCHATORO	Chile	CLP	1331.00	-1.78
AERO DEL PACIF-B	Mexico	MXN	281.23	-1.64
INRETAIL PERU CO	Peru	USD	36.40	-1.36

Per Volume	Exchange	Volume
ITAU CORPBANCA	Chile	1,201,431,561
BANCO SANTANDER	Chile	257,106,374
BANCO DE CHILE	Chile	245,764,344
ENEL AMERICAS SA	Chile	147,034,269
ENEL CHILE SA	Chile	132,106,955

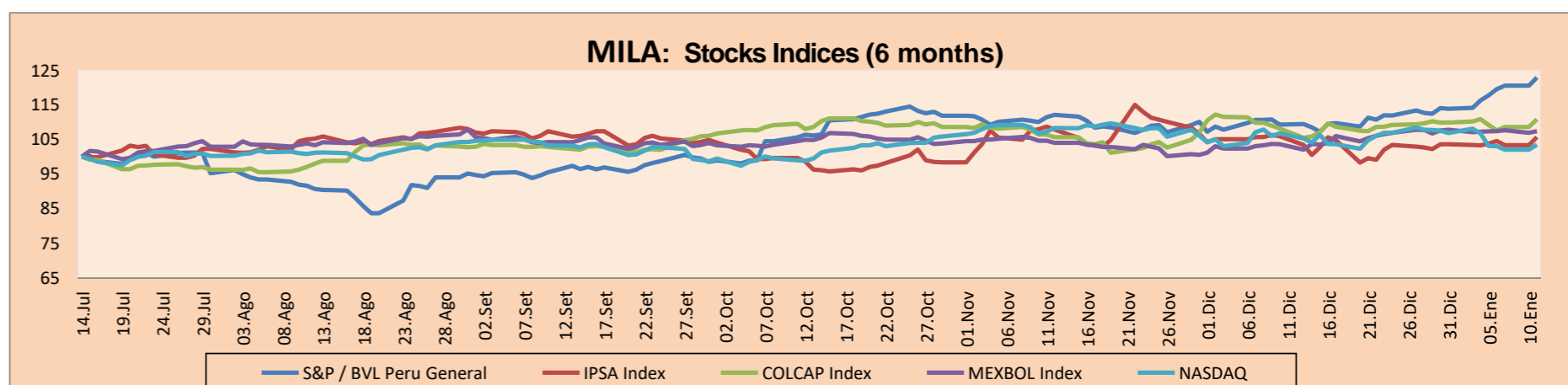
MILA

Perú: The BVL General Index ended today's session with a positive result of +1.94%. The index maintains a positive annual cumulative trend of +7.93% in local currency, while the dollar-adjusted performance amounted to +10.48%. Then, the S&P / BVL Peru SEL varied by +1.82% while the S&P / BVL LIMA 25 by +0.98%. The spot PEN reached S/. 3.9068. Headline: WB maintains Peruvian economy growth forecast at 3.2% for 2022.

Chile: The IPSA index ended the day with a positive performance of +2.25%. The most benefited sectors of the day were Materials (+5.22%) and Non-Basic Consumer Products (+3%). The best performing stocks were SOC Química y Minera Chile (+6.98%) and Compañía Cervecerías Unidas (+4.40%). Headline: Analysts see inflation peak in Chile at around 8% between June and May of this year.

Colombia: The COLCAP index ended the day with a positive return of +2.03%. The most benefited sectors were Energy (+3.67%) and Utilities (+2%). The best performing stocks were Grupo de Inversiones Suramericana (+4.46%) and Ecopetrol SA (+4.15%). Headline: With a takeover bid, Gilinski obtains 118 million shares and takes 25.4% of Sura.

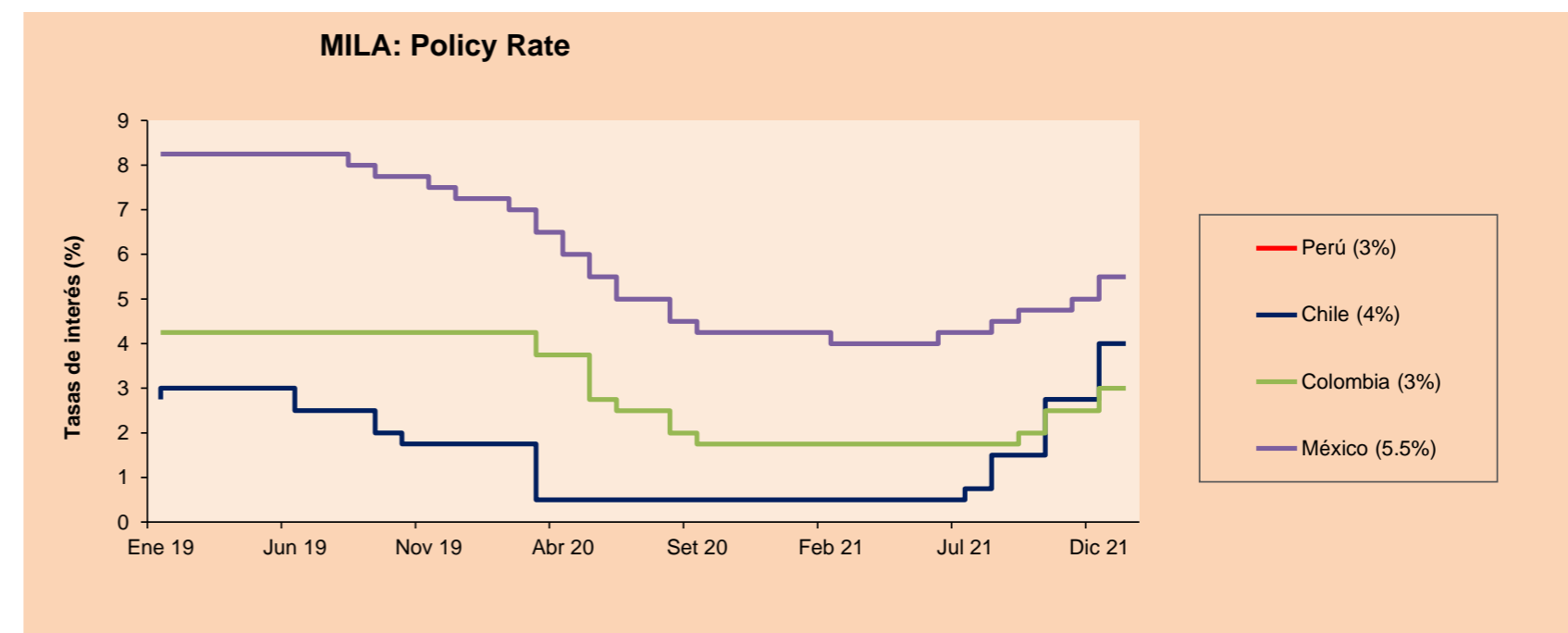
México: The IPC index closed the day with a positive performance of +0.43%. The most favored sectors were Communication Services (+1.16%) and Materials (+1.03%). The best returning stocks were Alfa SAB (+2.94%) and Grupo Bimbo SAB (+2.65%) Headline: Mexican economy will recover until 2023: Bank of America.



Base: 15/07/21=100
Source: Bloomberg

ETFs

	Curr.	Close	1D	5D	30 D	YTD	Exchange
▲ iShares MSCI All Peru Capped	USD	32.48	2.75%	6.14%	13.21%	9.66%	NYSE Arca
▲ iShares MSCI Chile Capped	USD	24.37	3.26%	6.14%	-3.68%	5.54%	Cboe BZX
▲ Global X MSCI Colombia	USD	10.19	3.61%	1.60%	0.59%	1.97%	NYSE Arca
▲ iShares MSCI Mexico Capped	USD	50.52	0.16%	-0.04%	5.07%	-0.16%	NYSE Arca
▲ iShares MSCI Emerging Markets	USD	50.02	2.31%	2.02%	-0.12%	2.40%	NYSE Arca
▲ Vanguard FTSE Emerging Markets	USD	50.46	1.94%	1.71%	0.46%	2.02%	NYSE Arca
▲ iShares Core MSCI Emerging Markets	USD	61.06	2.14%	1.80%	-0.91%	2.00%	NYSE Arca
▲ iShares JP Morgan Emerging Markets Bonds	USD	63.69	1.32%	1.55%	0.87%	1.38%	Cboe BZX
▲ Morgan Stanley Emerging Markets Domestic	USD	5.53	0.91%	0.91%	-0.54%	0.91%	New York



Source: Bloomberg

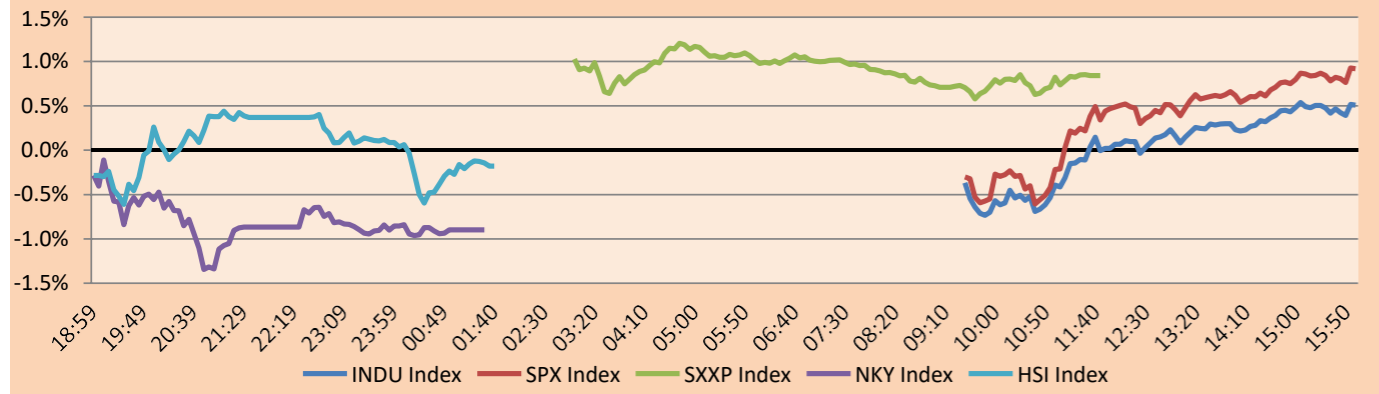
Capital Market Laboratory Coordinator: Economist Bruno Bellido
Collaboration: Sebastian Ore, Ariam Loayza, Miguel Solimano y Jhonatan Cueva
email: pulsobursatil@ulima.edu.pe
facebook: www.facebook.com/pulsobursatil.ul

WORLD

Main Indexes	Close	1 D*	5 D*	1 M*	YTD*	Cap. Burs. (US\$ Mill.)
▲ Dow Jones (EEUU)	36,252.02	0.51%	-1.49%	0.78%	-0.24%	11,571,053
▲ Standard & Poor's 500 (EEUU)	4,713.07	0.92%	-1.68%	0.02%	-1.11%	41,214,081
▲ NASDAQ Composite (EEUU)	15,153.45	1.41%	-3.00%	-3.05%	-3.14%	25,414,792
▲ Stoxx EUROPE 600 (Europa)	483.08	0.84%	-2.21%	1.58%	-0.97%	11,825,270
▲ DAX (Alemania)	15,941.81	1.10%	-1.31%	2.04%	0.36%	1,499,329
▲ FTSE 100 (Reino Unido)	7,491.37	0.62%	-0.18%	2.74%	1.45%	1,580,487
▲ CAC 40 (Francia)	7,183.38	0.95%	-1.83%	2.74%	0.42%	2,070,757
▲ IBEX 35 (España)	8,755.90	0.56%	-0.45%	4.73%	0.48%	519,589
▼ MSCI AC Asia Pacific Index	193.12	-0.03%	-0.66%	-0.48%	0.00%	25,550,826
▼ HANG SENG (Hong kong)	23,739.06	-0.03%	1.93%	-1.07%	1.46%	3,935,986
▼ SHANGHAI SE Comp. (China)	3,567.44	-0.73%	-1.79%	-2.70%	-1.99%	7,386,572
▼ NIKKEI 225 (Japón)	28,222.48	-0.90%	-1.98%	0.55%	-0.68%	4,127,073
▼ S&P / ASX 200 (Australia)	7,390.12	-0.77%	-2.63%	1.16%	-0.08%	1,722,516
▲ KOSPI (Corea del Sur)	2,927.38	0.02%	-2.07%	-1.78%	-0.71%	1,753,562

*Legend: Variation 1D: 1 day; 5D: 5 days; 1M: 1 Month; YTD: Var.% 31/12/21 to date

Global Markets: Intraday (var %)

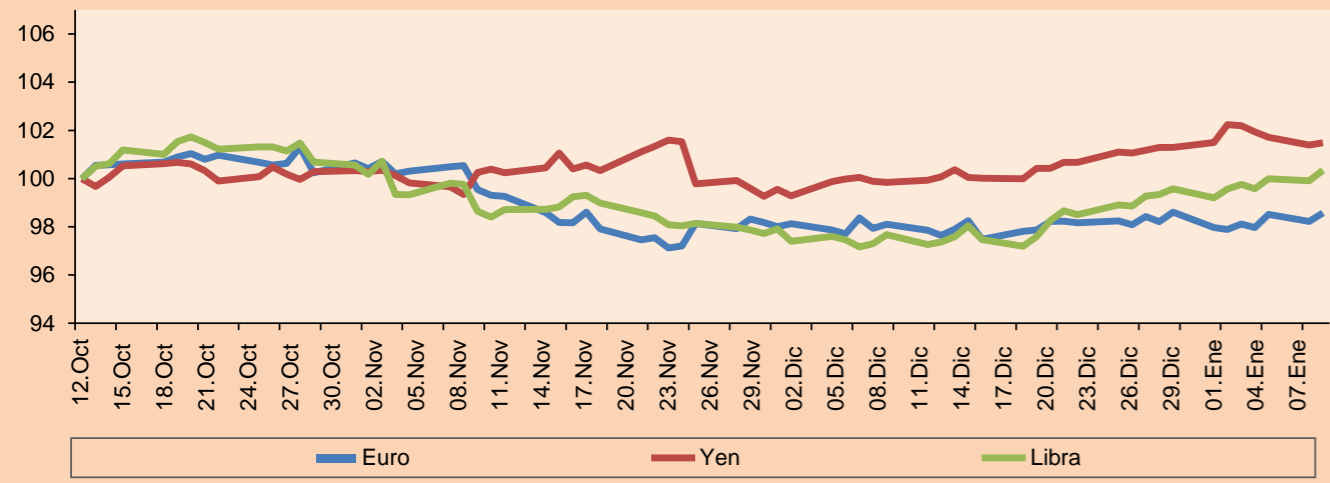


Source: Bloomberg

Monedas	Precio	1 D*	5 D*	1 M*	YTD*
▲ Euro	1.1367	0.36%	0.71%	0.48%	-0.03%
▲ Yen	115.3000	0.09%	-0.74%	1.64%	0.19%
▲ Libra Esterlina	1.3635	0.43%	0.78%	2.73%	0.76%
▼ Yuan	6.3740	-0.03%	0.02%	0.06%	0.28%
▲ Dólar de Hong Kong	7.7955	0.01%	0.02%	-0.04%	-0.01%
▼ Real Brasileño	5.5730	-1.71%	-1.97%	-0.64%	-0.05%
▲ Peso Argentino	103.5642	0.06%	0.45%	1.99%	0.81%

*Legend: Variation 1D: 1 day; 5D: 5 days; 1M: 1 Month; YTD: Var.% 31/12/21 to date

Foreign Exchange Indices (3 meses)

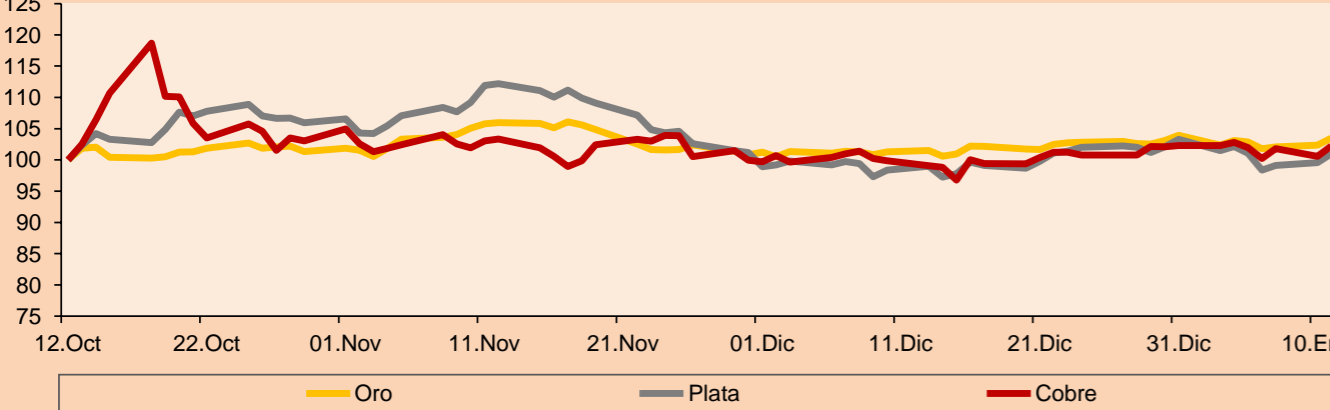


Base: 12/10/21=100
Source: Bloomberg

Commodities	Price	1 D*	5 D*	1 M*	YTD*
▲ Oro (US\$ Oz. T) (LME)	1,821.60	1.11%	0.39%	2.17%	-0.42%
▲ Plata (US\$ Oz. T) (LME)	22.78	1.40%	-1.17%	2.64%	-2.26%
▲ Cobre (US\$ TM) (LME)	9,734.50	1.68%	-0.55%	2.39%	-0.06%
▲ Zinc (US\$ TM) (LME)	3,576.40	2.17%	-2.17%	6.65%	-0.38%
▲ Petróleo WTI (US\$ Barril) (NYM)	81.22	3.82%	5.49%	13.63%	7.99%
▲ Estaño (US\$ TM) (LME)	40,798.00	1.29%	2.65%	2.45%	3.62%
▲ Plomo (US\$ TM) (LME)	2,315.85	1.20%	-0.53%	0.46%	-0.94%
▲ Azúcar #11 (US\$ Libra) (NYB-ICE)	18.11	1.57%	-3.41%	-8.12%	-4.08%
▲ Cacao (US\$ TM) (NYB-ICE)	2,588.00	2.66%	5.12%	4.95%	2.70%
▲ Café Arábica (US\$ TM) (NYB-ICE)	237.05	0.92%	2.29%	1.91%	4.84%

*Legend: Variation 1D: 1 day; 5D: 5 days; 1M: 1 Month; YTD: Var.% 31/12/20 to date.

Principal Metals Index (3 meses)



Base: 12/10/21=100
Source: Bloomberg

Equity

Germany (Stocks from DAX Index)

Largest gains Curr.	Price	▲%	Exchange	Largest losses	Curr.	Price	▼%	Exchange
ADS GY	EUR 254.75	4.30	Xetra	CON GY	EUR 95.58	-0.59	Xetra	
HEN3 GY	EUR 78.42	3.81	Xetra	DBK GY	EUR 12.314	-0.48	Xetra	
BAYN GY	EUR 51.3	2.52	Xetra	PAH3 GY	EUR 88.72	-0.34	Xetra	
IFX GY	EUR 39.5	2.49	Xetra	1COV GY	EUR 56.16	-0.18	Xetra	

Europe (Stocks from STOXX EUROPE 600)

Largest gains Curr.	Price	▲%	Exchange	Largest Losses	Curr.	Price	▼%	Exchange
ALE PW	PLN 40.83	5.70	Warsaw	ONT LN	GBP 531	-6.02	Londres	
BESI NA	EUR 73.5	5.63	EN Amsterdam	CAST SS	SEK 219.4	-4.44	Stockholm	
PRX NA	EUR 74.47	5.45	EN Amsterdam	STORB SS	SEK 51.3	-4.20	Stockholm	
HAS LN	GBP 156.4	5.39	Londres	CBK GY	EUR 7.38	-4.12	Xetra	

Panorama Mundial:

United States:

The U.S. market closes with positive returns thanks to relief generated by Fed Chairman Jerome Powell's testimony before Congress, which did not include any major surprises. Powell described a soft landing outlook for the economy as the Federal Reserve moves to remove emergency stimulus measures and begin raising interest rates. The DOW JONES index closed in positive territory thanks to a boost from Boeing, +3.21%, after revealing that its sales and deliveries of new aircraft increased last year. Customers looked past the pandemic's effects on travel demand, but the manufacturer finished 2021 behind its main rival, Airbus. Meanwhile, the S&P 500 finished higher as, in an appearance before Congress, Powell stated that the central bank was determined to ensure that high inflation does not become entrenched, also adding that a tightening of policy is necessary to maintain economic expansion. Finally, the NASDAQ index ended with gains due to Nutriband Inc. with +34.93%. The company reported that it had signed a feasibility agreement with Kindeva Drug Delivery to develop Nutriband's lead product, Aversa Fentanyl. The agreement focuses on adapting Kindeva's commercial transdermal manufacturing process to incorporate the Aversa technology. Thus, DOW JONES +0.51%; S&P 500 +0.92%; NASDAQ +1.41% ended the day with positive results.

Europe:

The main European indices ended the session with positive performances, where foreign investors prioritized seeking European stocks at optimal prices, due to uncertainty over the release of U.S. inflation data, which will be released tomorrow. The pan-European STOXX 600 index ended with gains, which were led by the energy sector +1.47% and information technology +1.43%, after fears of possible interest rate hikes led to large losses in previous sessions. The British market, reflected in the FTSE 100, finished the day higher, ending the day with a message from Heathrow airport, indicating that they intend to end the COVID testing requirement for entering London, after having cancelled more than one million flights. The DAX index closed in positive territory, despite the fact that the president of the German Central Bank announced in his first conference that inflation would continue to be higher than expected. The French market, represented by the CAC 40, rallied this session even after breaking its own record for the highest number of contagions in a day. Thus, FTSE 100 +0.62%; CAC 40 +0.95%; DAX +1.10%; STOXX 600 +0.84% ended with positive performances.

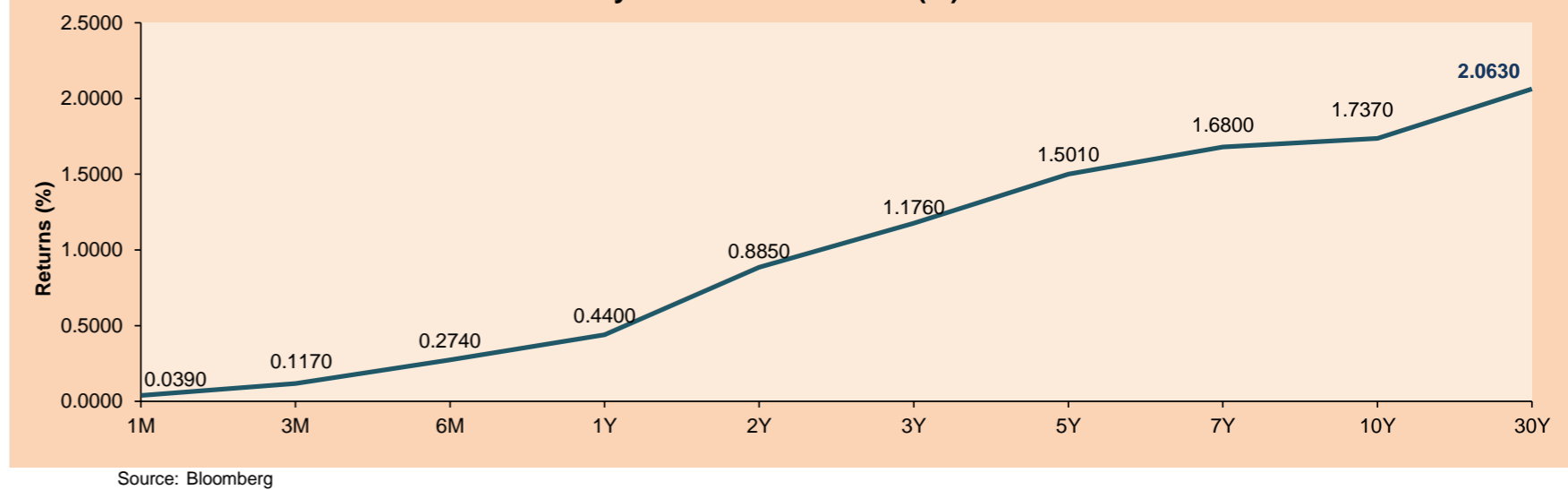
Asia:

The main Asian indices closed with mostly negative returns, due to the advance of the wave of the Omicron variant contagion around the world, whose outbreak is spreading rapidly. The Chinese market closed with negative returns as China intensified imports of sanctioned oil from Venezuela and Iran during 2021 as it results in a cost reduction due to cheaper crude oil. Meanwhile, the Hong Kong market saw a drop in performance as air passengers from high-risk countries will be banned from transiting Hong Kong International Airport, which would be another aggressive effort to protect against Omicron. Similarly, Japanese stocks had a negative change, as Japan extended its border closure until the end of February as a result of an expansion of Omicron. In addition, the inoculation of booster doses is planned to be accelerated. Also, South Korea's KOSPI posted a slight increase in performance as it records a November current account surplus. However, Australian stocks finished lower as the rapid increase in COVID cases in Australia hurt local markets, with the Consumer Staples -2.13% and Real Estate -1.92% sectors the hardest hit. Thus, NIKKEI -0.90%; HANG SENG -0.03%; CSI 300 -0.96%; S&P/ASX 200 -0.76%; KOSPI +0.02% ended with mostly negative returns.

ETFs

	Curr.	Ciase	1D	5D	30 D	YTD	Exchange
SPDR S&P 500 ETF TRUST	USD	469.75	0.91%	-1.63%	-0.21%	-1.10%	NYSE Arca
ISHARES MSCI EMERGING MARKET	USD	50.02	2.31%	2.02%	-0.12%	2.40%	NYSE Arca
ISHARES IBOXX HIGH YLD CORP	USD	86.34	0.47%	-0.47%	-0.33%	-0.77%	NYSE Arca
FINANCIAL SELECT SECTOR SPDR	USD	41.39	0.88%	2.02%	5.99%	5.99%	NYSE Arca
VANECK GOLD MINERS ETF	USD	31.14	2.06%	-0.76%	2.13%	-2.78%	NYSE Arca
ISHARES RUSSELL 2000 ETF	USD	217.61	1.06%	-3.28%	-1.05%	-2.18%	NYSE Arca
SPDR GOLD SHARES	USD	170.29	1.21%	0.42%	2.23%	-0.39%	NYSE Arca
ISHARES 20+ YEAR TREASURY BO	USD	143.56	0.67%	-0.10%	-3.56%	-3.12%	NASDAQ GM
INVESCO QQQ TRUST SERIES 1	USD	385.82	1.50%	-2.69%	-3.06%	-3.02%	NASDAQ GM
ISHARES BIOTECHNOLOGY ETF	USD	143.52	0.96%	-3.22%	-2.53%	-5.96%	NASDAQ GM
ENERGY SELECT SECTOR SPDR	USD	63.23	3.40%	6.81%	10.46%	13.93%	NYSE Arca
PROSHARES ULTRA VIX ST FUTUR	USD	11.67	-5.51%	-0.85%	-2.178%	-6.11%	Cboe BZX
UNITED STATES OIL FUND LP	USD	58.16	3.56%	4.62%	11.78%	6.99%	NYSE Arca
ISHARES MSCI BRAZIL ETF	USD	27.99	3.71%	2.75%	-8.77%	-0.29%	NYSE Arca
SPDR S&P OIL & GAS EXP & PR	USD	108.65	4.42%	3.74%	6.98%	13.33%	NYSE Arca
UTILITIES SELECT SECTOR SPDR	USD	69.32	-0.90%	-1.88%	0.25%	-3.16%	NYSE Arca
ISHARES US REAL ESTATE ETF	USD	110.58	0.25%	-3.88%	-0.54%	-4.79%	NYSE Arca
SPDR S&P BIOTECH ETF	USD	103.89	0.73%	-6.71%	-5.48%	-7.21%	NYSE Arca
ISHARES IBOXX INVESTMENT GRA	USD	129.99	0.30%	-0.94%	-2.11%	-1.91%	NYSE Arca
ISHARES JP MORGAN USD EMERGI	USD	106.44	0.21%	-1.37%	-2.45%	-2.40%	NASDAQ GM
REAL ESTATE SELECT SECT SPDR	USD	48.9	-0.16%	-4.36%	-0.59%	-5.62%	NYSE Arca
ISHARES CHINA LARGE-CAP ETF	USD	37.82	3.19%	5.38%	-2.68%	3.39%	NYSE Arca
CONSUMER STAPLES SPDR	USD	76.72	-0.12%	-1.16%	3.41%	-0.51%	NYSE Arca
VANECK JUNIOR GOLD MINERS	USD	40.71	2.75%	-1.57%	0.35%	-2.91%	NYSE Arca
SPDR BLOOMBERG HIGH YIELD BO	USD	107.75	0.50%	-0.51%	-0.30%	-0.76%	NYSE Arca
VANGUARD REAL ESTATE ETF	USD	110.56	0.15%	-3.83%	-0.18%	-4.70%	NYSE Arca
GRAYSCALE BITCOIN TRUST BTC	USD	31.15	3.25%	-10.13%	-16.44%	-9.05%	OTC US

USA Treasury Bonds Yields Curve (%)



Source: Bloomberg

LIMA

Stocks

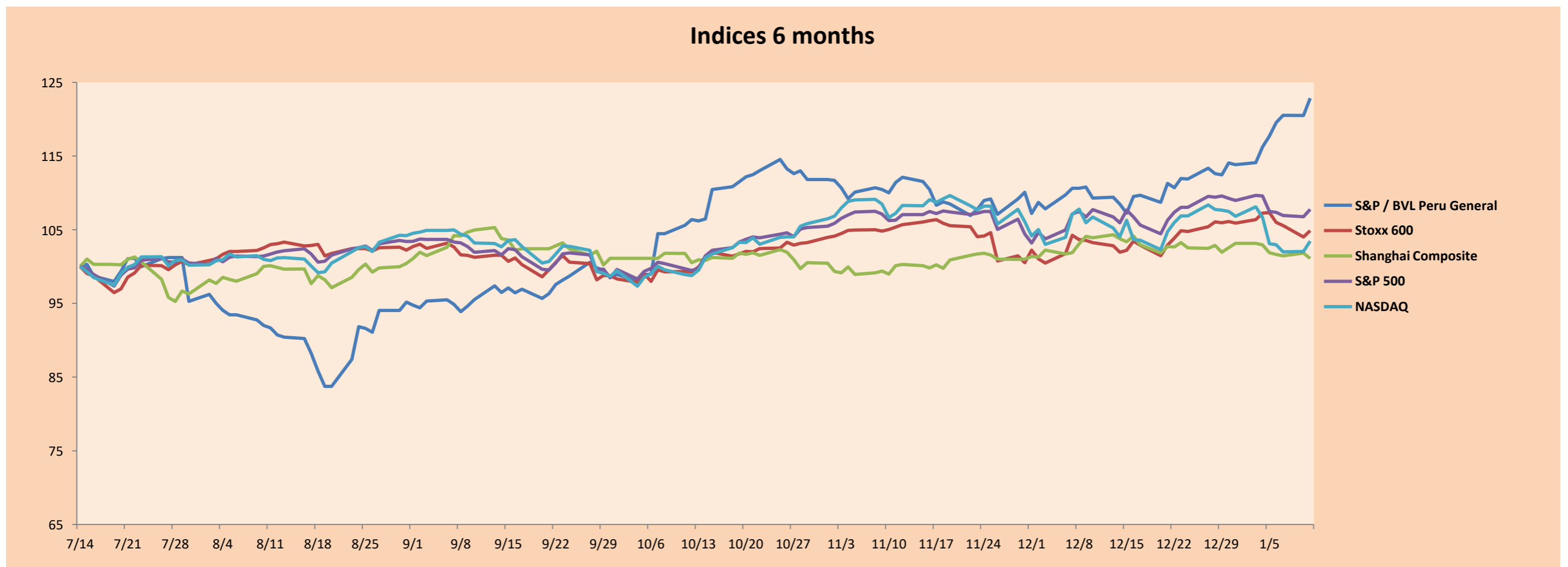
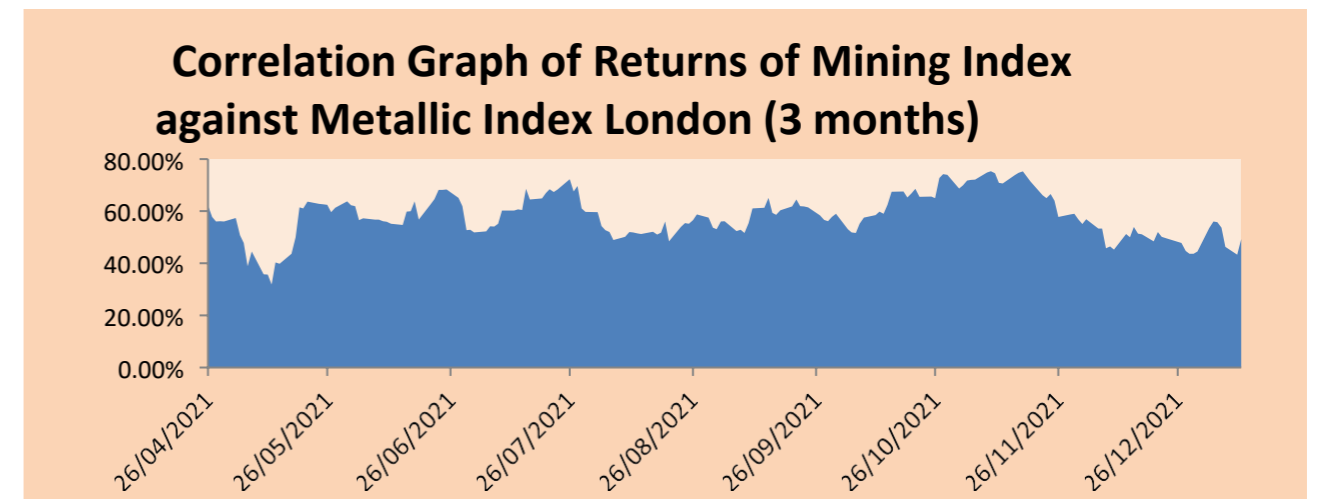
Ticker	Currency	Price	1D*	5D*	30D*	YTD*	Frequency	Volumen (US\$)	Beta	Dividend Yield (%)	Price Earning	Market Cap. (M US\$)	Economic Sector	Index Weighth
▲ ALICORC1 PE**	S/.	6.58	0.18%	-0.48%	3.04%	0.12%	90.00%	322,963	0.82	12.69	13.54	1,435.39	Industrial	3.53%
▲ ATACOCB1 PE**	S/.	0.14	0.74%	4.62%	-1.45%	13.33%	60.00%	15,038	1.11	0.00	-	32.89	Mineras	1.02%
- BACKUS11 PE**	S/.	21.15	0.00%	2.67%	-5.54%	3.17%	90.00%	18,731	0.72	14.73	7.80	7,255.07	Industriales	0.82%
▲ BAP PE**	US\$	138.30	4.93%	7.63%	22.93%	11.73%	95.00%	796,108	1.26	0.88	-	13,053.07	Diversas	5.82%
▲ BVN PE**	US\$	7.96	5.43%	9.04%	11.48%	9.04%	100.00%	782,615	1.26	0.00	-	2,190.29	Mineras	5.88%
▼ CASAGRC1 PE**	S/.	14.33	-11.38%	58.34%	83.72%	57.47%	95.00%	509,052	1.09	6.88	9.86	308.97	Agrario	1.31%
- BBVAC1 PE**	S/.	1.80	0.00%	-0.55%	-0.55%	-0.55%	100.00%	240,308	0.89	2.52	12.41	3,113.86	Bancos y Financieras	2.85%
▼ CORAREI1 PE**	S/.	1.89	-2.07%	9.25%	9.25%	9.88%	95.00%	133,303	0.92	14.58	2.88	558.36	Industriales	1.72%
▼ CPACASC1 PE**	S/.	4.94	-1.20%	0.41%	2.28%	-0.20%	100.00%	195,663	0.67	15.99	35.29	586.48	Industriales	2.38%
- CVERDEC1 PE**	US\$	45.00	0.00%	20.97%	30.06%	20.87%	100.00%	450,000	1.23	4.44	16.40	15,752.52	Mineras	5.25%
▼ ENGEPEC1 PE**	S/.	2.05	-2.38%	-6.39%	-8.07%	-0.97%	55.00%	319,950	0.68	15.17	8.92	1,257.02	Servicios Públicos	1.44%
▲ ENDISPC1**	S/.	4.16	1.46%	2.72%	-2.58%	4.00%	35.00%	48,175	0.80	7.94	8.50	679.95	Servicios Públicos	0.98%
▲ FERREYC1 PE**	S/.	2.40	5.73%	6.19%	29.73%	17.07%	100.00%	6,783,723	1.04	8.20	6.76	599.38	Diversas	4.90%
▲ AENZAC1 PE**	S/.	1.54	1.32%	6.21%	4.76%	12.41%	85.00%	5,465	1.17	0.00	-	343.70	Diversas	4.05%
▲ IFS PE**	US\$	28.40	0.71%	5.62%	17.36%	5.77%	90.00%	66,387	1.19	5.00	6.72	3,278.71	Diversas	7.22%
▼ INRET1 PE**	US\$	36.40	-1.36%	1.11%	5.51%	4.15%	95.00%	1,146,135	1.00	3.74	76.56	3,742.19	Diversas	5.28%
- LUSURC1 PE**	S/.	14.25	0.00%	0.07%	-1.72%	0.07%	50.00%	5,730	#N/A N/A	6.77	14.08	1,776.15	Servicios Públicos	1.81%
▲ MINSURI1 PE**	S/.	4.75	2.15%	6.26%	24.67%	20.25%	95.00%	947,790	0.97	14.47	3.76	3,505.24	Mineras	3.09%
- PML PE**	US\$	0.13	0.00%	8.47%	-8.57%	8.47%	25.00%	4,062	1.25	0.00	-	33.84	Mineras	2.12%
▲ SCCO PE**	US\$	65.75	3.54%	5.28%	8.02%	6.43%	80.00%	879,520	0.88	4.87	15.64	50,830.09	Mineras	2.14%
- SIDERC1 PE**	S/.	1.74	0.00%	8.75%	4.82%	8.75%	90.00%	11,371	0.86	25.44	4.15	311.76	Industriales	1.43%
▲ TV PE**	US\$	1.45	5.07%	0.00%	16.00%	11.54%	80.00%	35,446	1.26	0.00	-	143.42	Mineras	2.93%
▲ UNACEMC1 PE**	S/.	2.41	0.42%	0.42%	1.26%	0.42%	100.00%	65,683	0.95	4.40	10.08	1,121.55	Industriales	3.00%
▲ VOLCABC1 PE**	S/.	0.71	1.43%	9.23%	22.41%	18.33%	95.00%	337,708	1.59	0.00	-	740.85	Mineras	5.90%
▲ NEXAPEC1 PE**	S/.	3.80	0.80%	4.40%	6.74%	6.74%	50.00%	79,760	1.15	0.00	10.41	1,234.61	Mineras	1.56%

Quantity of shares : 25
Source: Bloomberg, Economática
* Bloomberg Industry Classification System
** PER is used in the stock market and original currency of the instrument
*Legend: Variation 1D: 1 day; 5D: 5 days, 1M: 1 Month; YTD: Var.% 31/12/21 to date

Sectorial Indices

	Close	1D*	5D*	30D*	YTD*	Beta
▲ S&P/BVLMining	442.56	2.73%	6.39%	8.79%	7.52%	0.86
▼ S&P/BVLConsumer	1,220.89	-1.15%	4.36%	9.45%	6.35%	0.73
▲ S&P/BVLIndustrials	276.63	1.30%	3.33%	9.23%	7.19%	0.78
▲ S&P/BVLFinancials	982.58	3.69%	5.85%	17.38%	8.44%	1.27
▼ S&P/BVLConstruction	293.80	-0.39%	2.22%	2.72%	3.68%	0.68
▼ S&P/BVLPublicSvcs	553.01	-0.49%	-1.16%	-1.77%	0.82%	0.25
▼ S&P/BVLElectricUtil	539.88	-0.49%	-1.16%	-1.77%	0.82%	0.25

*Legend: Variation 1D: 1day; 5D: 5 days, 1M: 1 Month; YTD: Var.% 31/12/21 to date.



Base: 14/07/21=100
Source: Bloomberg

Capital Market Laboratory Coordinator: Economist Bruno Bellido
Collaborator: Sebastian Ore, Ariam Loayza, Miguel Solimano y Jhonatan
Cueva email: pulsobursatil@ulima.edu.pe
facebook: www.facebook.com/pulsobursatil.ul

SOVEREIGN RATING

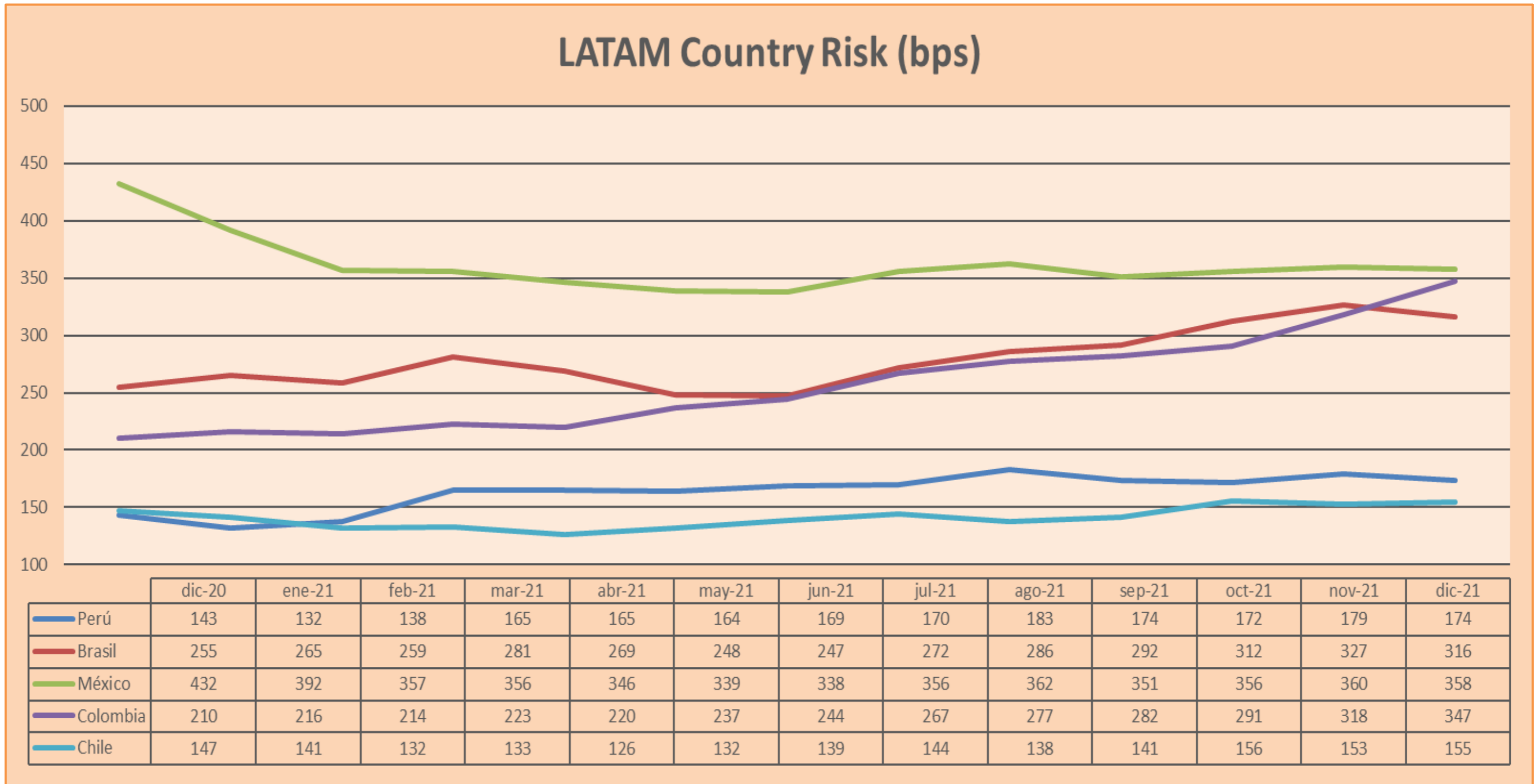
RISK RATINGS

Moody's	S&P	Fitch	
Aaa	AAA	AAA	Prime
Aa1	AA+	AA+	High credit quality
Aa2	AA	AA	
Aa3	AA-	AA-	
A1	A+	A+	Medium-high grade, with low credit risk
A2	A	A	
A3	A-	A-	
Baa1	BBB+	BBB+	Moderate Credit Risk
Baa2	BBB	BBB	
Baa3	BBB-	BBB-	
Ba1	BB+	BB+	It has speculative elements and it is subject to substantial credit risk
Ba2	BB	BB	
Ba3	BB-	BB-	
B1	B+	B+	It is considered speculative and it has high credit risk
B2	B	B	
B3	B-	B-	
Caa1	CCC+	CCC	Bad credit conditions and it is subject to high credit risk
Caa2	CCC		
Caa3	CCC-		
Ca	CC	DDD	Very close to default or in default
C	C		
	D		

Source: Bloomberg

Rating Crédito Latinoamérica			
Clasificadora de riesgo			
País	Moody's	Fitch	S&P
Perú	Baa1	BBB	BBB+
México	Baa1	BBB-	BBB
Venezuela	C	WD	NR
Brazil	Ba2	BB-	BB-
Colombia	Baa2	BB+	BB+
Chile	A1	A-	A
Argentina	Ca	WD	CCC+
Panamá	Baa2	BBB-	BBB

Source: Bloomberg



Source: BCRP

Capital Market Laboratory Coordinator: Economist Bruno Bellido
Collaboration: Sebastian Ore, Ariam Loayza, Miguel Solimano y Jhonatan Cueva
email: pulsobursatil@ulima.edu.pe
facebook: www.facebook.com/pulsobursatil.ul