

PULSO BURSÁTIL

FACULTAD DE CIENCIAS EMPRESARIALES Y ECONÓMICAS
CARRERA DE ECONOMÍA
LABORATORIO DE MERCADO DE CAPITALES

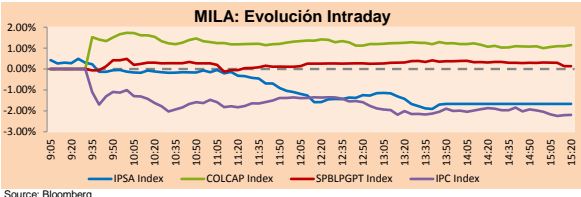


MILA

Lima, February 23, 2022

Main Indexes	Close	1 D	5 D	1 M	YTD	Cap. Burs. (US\$ bill)
▼ IPSA (Chile)	4,375.69	-2.17%	-5.96%	-5.79%	1.56%	103.18
▼ IGPA (Chile)	22,062.34	-1.82%	-5.63%	-4.77%	2.30%	124.43
▲ COLSC (Colombia)	1,051.77	-0.32%	1.51%	0.76%	8.08%	6.69
▲ COLCAP (Colombia)	1,510.20	1.19%	0.50%	-0.88%	7.03%	85.25
▼ S&P/BVL (Perú)*	23,390.74	-0.01%	-2.77%	1.94%	10.79%	110.35
▲ S&P/BVL SEL (Perú)	613.62	0.12%	-2.70%	0.88%	8.88%	100.04
▲ S&P/BVL LIMA 25	33,848.62	0.03%	-2.27%	-0.73%	11.81%	108.97
▼ IPC (México)	51,362.95	-2.35%	-4.32%	-0.46%	-3.58%	325.69
▼ S&P MILA 40	502.61	-0.45%	-2.58%	1.34%	13.49%	6,593.65

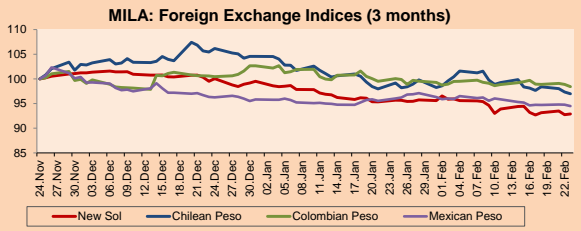
*Legend: Variation 1D: 1 day; 5D: 5 days; 1M: 1 Month; YTD: Var% 12/31/21 to date



Source: Bloomberg

Currency	Price	1D*	5D*	30 D*	YTD*
▲ Sol (PEN)	3,7353	0.13%	-0.34%	-2.92%	-6.60%
▼ Chilean Peso (CLP)	790.18	-0.36%	-1.17%	-2.19%	-7.26%
▼ Colombian Peso (COP)	3,912.90	-0.45%	-1.28%	-1.61%	-4.10%
▼ Mexican Peso (MXN)	20.25	-0.29%	-0.15%	-1.60%	-1.38%

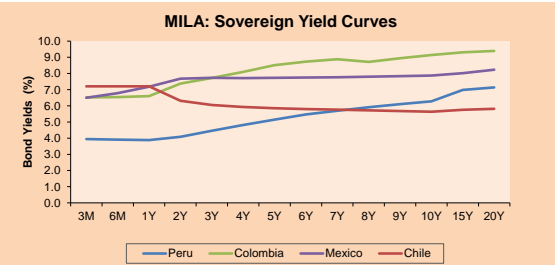
*Legend: Variation 1D: 1 day; 5D: 5 days; 1M: 1 Month; YTD: Var% 12/31/21 to date



Base: 24/11/21=100

Source: Bloomberg

Fixed Income	Currency	Price	Bid Yield (%)	Ask Yield (%)	Duration
PERU 7.35 07/21/25	USD	114.829	2.81	2.70	3.05
PERU 4.125 08/25/27	USD	104.881	3.18	3.12	4.84
PERU 8.75 11/21/33	USD	145.466	3.91	3.87	8.08
PERU 6.55 03/14/37	USD	125.988	4.22	4.19	9.61
PERU 5.625 11/18/2050	USD	123.425	4.23	4.20	15.56
CHILE 2.25 10/30/22	USD	100.799	1.37	0.76	0.67
CHILE 3.125 01/21/26	USD	102.296	2.56	2.44	3.67
CHILE 3.625 10/30/42	USD	94.302	4.05	4.02	14.30
COLOM 11.85 03/09/28	USD	146.029	3.46	3.27	4.54
COLOM 10.375 01/28/33	USD	134.182	6.14	5.97	7.16
COLOM 7.375 09/18/37	USD	108.883	6.49	6.43	9.28
COLOM 6.125 01/18/41	USD	94.06	6.71	6.65	10.93
MEX 4 10/02/23	USD	94.06	6.713	6.651	10.93
MEX5.55 01/45	USD	107.437	5.01	4.99	13.35



Source: Bloomberg

Equity

Largest gains	Exchange	Currency	Price	▲ %
BANCO DAVIVIENDA	Colombia	COP	31790.00	3.69
BUENAVENTURA-ADR	Peru	USD	10	3.14
ANDINA-PREF B	Chile	CLP	1660.00	2.53
BANCOLOMBIA-PREF	Colombia	COP	34500	2.37
ISA SA	Colombia	COP	23600.00	1.16

Per Turnover

	Exchange	Amount (US\$)
AMERICA MOVIL-L	Mexico	77,166,192
GRUPO F BANORT-O	Mexico	61,544,613
WALMART DE MEXIC	Mexico	52,338,974
CEMEX SAB-CPO	Mexico	44,730,109
GRUPO MEXICO-B	Mexico	35,235,122

Largest losses	Exchange	Currency	Price	▼ %
CEMEX SAB-CPO	Mexico	MXN	10.52	-6.74
PARQUE ARAUCO	Chile	CLP	745	-6.59
ENGIE ENERGIA CH	Chile	CLP	490.00	-6.38
CENCOSUD SHOPPIN	Chile	CLP	810	-6.14
AERO DEL PACIF-B	Mexico	MXN	292.22	-5.69

Per Volume

	Exchange	Volume
ITAU CORPBANCA	Chile	478,627,166
AMERICA MOVIL-L	Mexico	85,718,654
CEMEX SAB-CPO	Mexico	85,689,112
BANCO SANTANDER	Chile	78,497,985
BANCO DE CHILE	Chile	69,195,951

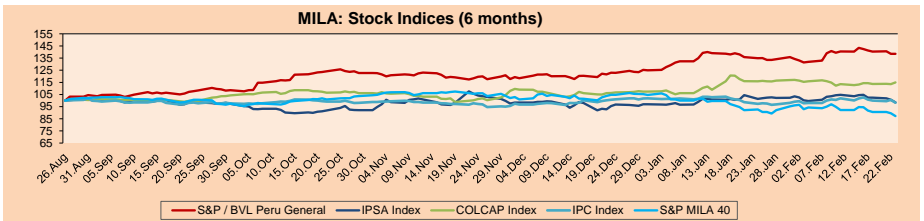
MILA

Peru: The BVL General Index ended today's session with a negative result of -0.01%. The index maintains a positive annual cumulative trend of +10.79% in local currency, while the dollar-adjusted performance amounted to +18.62%. Then, the S&P / BVL Peru SEL varied by +0.12% while the S&P / BVL LIMA 25 by +0.03%. The PEN spot reached S/. 3.7355. Headline: PetroTal plans to invest S/ 450 million in Peru.

Chile: The IPSA index ended the day with a negative return of -2.17%. The most damaged sectors of the day were Real Estate (-6.49%) and Information Technology (-3.72%). The worst performing stocks were Plaza SA (-6.84%) and Parque Arauco SA (-6.59%). Headline: Government fine-tunes the nomination of Stephany Griffith-Jones as the next Central Bank advisor.

Colombia: The COLCAP index ended the session with a positive return of +1.19%. The most benefited sectors of the day were Finance (+2.11%) and Energy (+0.83%). The best performing stocks were Inversiones BanColombia SA (+4.53%) and Banco Davivenda SA (+3.69%). Headline: Government will allocate \$8 billion to pay debts of the San Francisco de Asis hospital in Quibdo (Chocó).

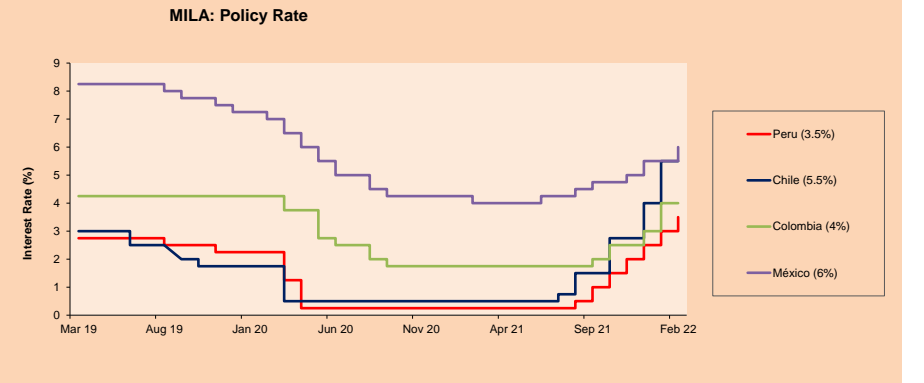
Mexico: The IPC index closed the day in negative territory -2.35%. The worst performing sectors of the day were Industrials (-3.41%) and Health Care (-2.99%). The worst performing stocks were Cemex SAB de CV (-6.74%) and Grupo Aeroportuario del Pacífico SAB de CV (-5.69%). Headline: Foreign investors preferred to reinvest in Mexico rather than withdraw their capital, affirms the Ministry of Economy.



Base: 27/08/21=100

Source: Bloomberg

ETFs	Curr.	Close	1D	5D	30 D	YTD	Exchange
▲ iShares MSCI All Peru Caped Index Fund	USD	34.11	0.44%	-2.40%	5.31%	15.16%	NYSE Arca
▲ iShares MSCI All Chile Caped Index Fund	USD	25.37	-0.90%	-5.37%	-2.72%	9.87%	Cboe BZX
▲ Global X MSCI Colombia	USD	10.8612	1.46%	0.66%	1.22%	8.69%	NYSE Arca
▼ iShares MSCI Mexico Capped	USD	49.26	-2.38%	-4.03%	2.01%	-2.65%	NYSE Arca
▼ iShares MSCI Emerging Markets	USD	47.47	-1.17%	-4.66%	-1.74%	-2.82%	NYSE Arca
▼ Vanuand FTSE Emerging Markets	USD	48.47	-0.92%	-4.47%	-1.08%	-2.00%	NYSE Arca
▼ iShares Core MSCI Emerging Markets	USD	58.05	-1.01%	-4.41%	-1.49%	-3.02%	NYSE Arca
▼ iShares JP Morgan Emerging Markets Bonds	USD	62.68	-0.59%	-1.97%	0.59%	-0.22%	Cboe BZX
▼ Morgan Stanley Emerging Markets Domestic	USD	5.44	-0.18%	-1.63%	0.18%	-0.73%	New York



Source: Bloomberg

Capital Market Laboratory Coordinator: Economist Bruno Bellido
Collaboration: Sebastian Ore, Fabrizio Lavalle, Miguel Solimano and Jhonatan Cueva
email: pulsobursatil@ulima.edu.pe
facebook: www.facebook.com/pulsobursatil.ul

WORLD

Main Indices	Close	1 D*	5 D*	1 M*	YTD*	Market Cap. (US\$ Mill.)
▼ Dow Jones (USA)	33,131.76	-1.38%	-5.31%	-3.31%	-8.82%	10,839,059
▼ Standard & Poor's 500 (EEUU)	4,225.50	-1.84%	-5.49%	-3.92%	-11.34%	37,922,899
▼ NASDAQ Composite (USA)	13,037.49	-2.57%	-7.80%	-5.31%	-16.67%	22,821,193
▼ Stoxx EUROPE 600 (Europe)	453.86	-0.28%	-2.97%	-4.34%	-6.96%	11,090,431
▼ DAX (Germany)	14,631.36	-0.42%	-4.81%	-6.23%	-7.89%	1,376,578
▲ FTSE 100 (United Kingdom)	7,498.18	0.05%	-1.39%	0.05%	1.54%	1,548,786
▼ CAC 40 (France)	6,780.67	-0.10%	-2.65%	-4.07%	-5.21%	1,941,749
▼ IBEX 35 (Spain)	8,440.10	-0.63%	-3.40%	-2.93%	-3.14%	494,196
▲ MSCI AC Asia Pacific Index	185.43	0.18%	-2.45%	-3.36%	-3.98%	24,696,526
▲ HANG SENG (Hong Kong)	23,660.28	0.60%	-4.28%	-4.04%	1.12%	3,943,850
▲ SHANGHAI SE Comp. (China)	3,489.15	0.93%	0.67%	-0.99%	-4.14%	7,351,960
▲ NIKKEI 225 (Japan)	26,449.61	-1.71%	-1.55%	-3.90%	-8.13%	3,921,760
▲ S&P / ASX 200 (Australia)	7,205.69	0.62%	-1.09%	0.93%	-3.21%	1,761,812
▼ KOSPI (South Korea)	2,719.53	-2.35%	-4.32%	-2.60%	-8.67%	1,726,746

*Legend: Variation 1D: 1 Day; 5D: 5 Days; 1M: 1 Month; YTD: Var.% 12/31/21 to date

Equity

Germany (Stocks from DAX Index)

Largest gains	Curr.	Price	▲%	Exchange	Largest losses	Curr.	Price	▼%	Exchange
BEI GY	EUR	88.46	2.01	Xetra	FME GY	EUR	57.8	-3.92	Xetra
HEN3 GY	EUR	73.22	2.01	Xetra	DBK GY	EUR	44.29	-2.83	Xetra
BAYN GY	EUR	52.95	1.03	Xetra	MUV2 GY	EUR	12.874	-2.50	Xetra
BMW GY	EUR	91.62	0.76	Xetra			251.5	-2.31	Xetra

Europe (Stocks from STOXX EUROPE 600)

Largest gains	Curr.	Price	▲%	Exchange	Largest losses	Curr.	Price	▼%	Exchange
PAH3 GY	EUR	94.94	4.58	Xetra	SBBS SS	SEK	42.75	-12.20	Stockholm
STLA IM	EUR	17.066	4.40	Borsa Italiana	LPP PW	PLN	12900	-10.23	Warsaw
AGS BB	EUR	43.58	4.06	EN Brussels	CPR IM	EUR	9.294	-8.77	Borsa Italiana
BN PF	EUR	56.69	3.87	EN Paris	UN01 GY	EUR	33.27	-9.32	Xetra

Global Overview:

United States:

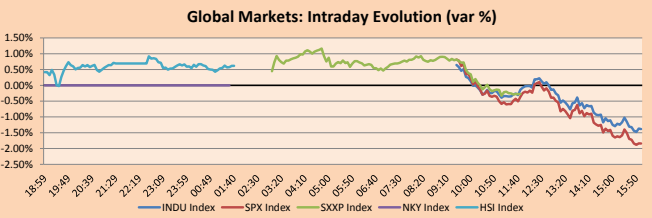
The U.S. market closes with negative performances, after Ukraine declared a state of emergency, which caused fears to escalate due to Russian conflicts. The DOW JONES index closed in negative territory, where President Joe Biden's administration is eyeing the use of its oil reserves to offer them to the market, due to the increase in their prices that has been appearing due to tensions between Russia and Ukraine, which JPMorgan Chase estimates project an average price of 110 dollars per barrel of Brent crude. Meanwhile, the S&P 500 finished lower, pushing towards the correction zone in a context where there is an increase in the number of cyber-attacks against the Ukrainian government and its banks' websites. Finally, the NASDAQ index ended with losses, due to the repeated announcement of the Fed Chairman in San Francisco, mentioning that he considers appropriate a monetary policy tightening for March, due to the fact that inflation turns out to be very high, also the US bond yield rate is in continuous increase being 1.984%. Thus, DOW JONES -1.38%; S&P 500 -1.84%; NASDAQ -2.57% ended the day with negative results.

Europe:

Major European indices ended the session with mostly negative performances. The pan-European index STOXX 600 closed in negative territory with a performance of -0.28%, amid further sanctions by the United States against Russia setting penalties to the company in charge of the Nord Stream 2 pipeline and the declaration of a state of emergency by the Ukrainian government. The Ukrainian also suggested its citizens living in Russia flee the country and accused the Kremlin of hacking into multiple government websites and banks on Wednesday. The FTSE 100 was the only stock index to close with positive returns with a +0.05% performance, mainly due to upbeat corporate reports that easily beat investor forecasts. In addition, the UK market was also boosted by gains from the consumer staples sector (+0.69%), specifically Ocado Group PLC (+1.96%) and Unilever PLC (+1.34%). As for the UK stocks that rose the most, Barclays PLC (+3.06%) stood out after reporting that its annual profitability tripled compared to the previous year. Regarding the German market, the DAX index closed with -0.42%, as market sentiment worsened due to tensions in Europe and after the evacuation of Russian authorities at the embassy in Kyiv. Finally, the French market closed down -0.10%, as conflict tensions had a major impact on investors. Thus, FTSE 100 +0.05%; CAC 40 -0.10%; DAX -0.42%; STOXX 600 -0.28% ended with mostly negative performances.

Asia:

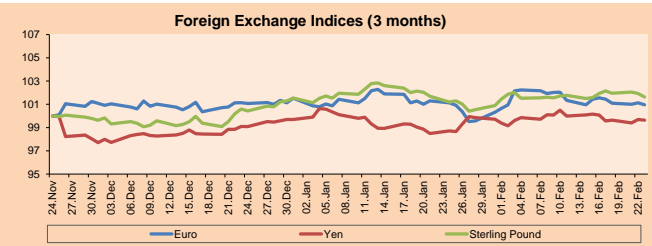
The main Asian indexes closed in positive territory, in a context marked by the restrictions imposed by the US and its allies, however, investors took such actions as mild, and still hope that diplomacy can resolve the geopolitical conflict. On the other hand, the Chinese market closed in positive territory, after reports from Beijing indicated further cuts on taxes and tariffs to stimulate the economy. On the other hand, the Japanese market did not trade this session after being on vacation for Emperor's Day. The HANG SENG index ended with gains, as economic growth for the last quarter of 2021 advanced by 4.8% year-on-year, a figure in line with forecasts; however, new restrictive measures are being considered in view of the increase in Covid-19 cases. The Australian market also ended with positive returns, after wages grew by 2.3% y/y, failing to meet expectations and below the upper levels, justifying a possible interest rate hike. Finally, South Korea's KOSPI ended with positive returns similar to the region, as the Business Survey Index (BSI) rose to 91 in February, and the economic sentiment index rose by 0.1 points from the previous month to 105.7. Thus, HANG SENG +0.60%; CSI 300 +1.07%; S&P/ASX 200 +0.62%; KOSPI +0.47% ended with positive results.



Source: Bloomberg

Currency	Price	1 D*	5 D*	1 M*	YTD*
▼ Euro	1.1307	-0.16%	-0.58%	-0.17%	-0.55%
▼ Yen	115.0100	-0.06%	-0.44%	0.93%	-0.06%
▼ Sterling Pound	1.3544	-0.30%	-0.31%	0.42%	0.09%
▲ Yuan	6.3145	-0.19%	-0.36%	-0.26%	-0.65%
▲ Hong Kong Dollar	7.8049	0.03%	0.05%	0.24%	0.11%
▲ Brazilian Real	5.0065	-1.05%	-2.39%	-8.82%	-10.21%
▲ Argentine Peso	107.2860	0.08%	0.67%	2.64%	4.43%

*Legend: Variation 1D: 1 Day; 5D: 5 Days; 1M: 1 Month; YTD: Var.% 12/31/21 to date

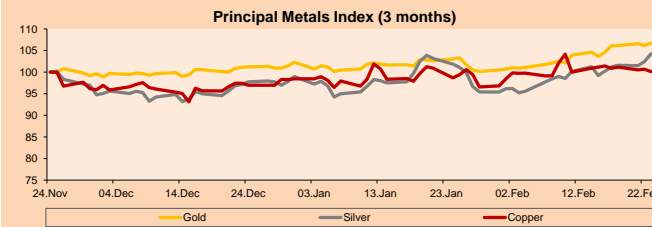


Base: 24/11/21=100

Source: Bloomberg

Commodities	Close	1 D*	5 D*	1 M*	YTD*
▲ Oro (US\$ Oz. T) (LME)	1,909.01	0.55%	2.10%	3.58%	4.36%
▲ Plata (US\$ Oz. T) (LME)	24.55	1.82%	4.04%	2.36%	5.34%
- Cobre (US\$ TM) (LME)	9,962.25	0.00%	-0.72%	2.04%	2.28%
- Zinc (US\$ TM) (LME)	3,627.00	0.00%	0.85%	-0.01%	1.03%
▲ Petróleo WTI (US\$ Barril) (NYM)	92.10	0.21%	0.29%	11.76%	23.71%
▲ Estación (US\$ TM) (LME)	44,600.50	0.00%	1.76%	3.74%	13.28%
- Plomo (US\$ TM) (LME)	2,342.25	0.00%	-0.29%	-1.12%	0.19%
▼ Azúcar #11 (US\$ Libra) (NYB-ICE)	17.88	-0.06%	1.82%	-3.30%	-3.87%
▲ Cacao (US\$ TM) (NYB-ICE)	2,664.00	0.30%	-0.26%	4.47%	4.35%
▲ Café Arábica (US\$ TM) (NYB-ICE)	247.55	0.12%	-2.04%	6.13%	9.54%

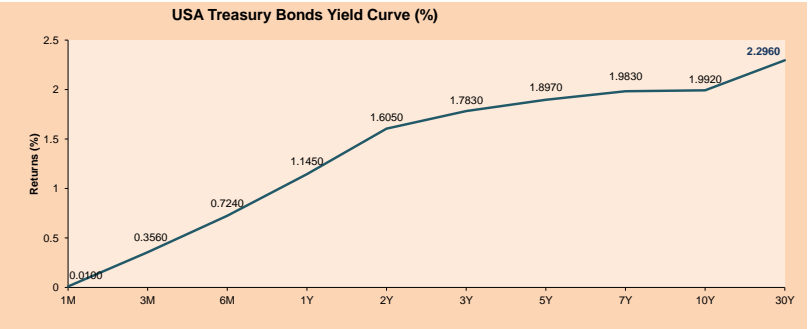
*Leyenda: Variación 1D: 1 Día; 5D: 5 Días; 1M: 1 Mes; YTD: Var.% 31/12/21 a la fecha



Base: 24/11/21=100

Source: Bloomberg

ETFs	Curr.	Close	1D	5D	30 D	YTD	Exchange
SPDR S&P 500 ETF TRUST	USD	421.95	-1.77%	-5.52%	-4.07%	-11.16%	NYSE Arca
ISHARES MSCI EMERGING MARKET	USD	47.47	-1.17%	-4.66%	-1.74%	-2.82%	NYSE Arca
ISHARES IBXX HIGH YLD CORP	USD	82.55	-0.18%	-0.69%	-3.28%	-5.13%	NYSE Arca
FINANCIAL SELECT SECTOR SPDR	USD	38.34	-1.74%	-4.70%	0.08%	-1.82%	NYSE Arca
VANECK GOLD MINERS ETF	USD	34.74	1.85%	3.61%	10.46%	8.46%	NYSE Arca
ISHARES RUSSELL 2000 ETF	USD	192.98	-1.87%	-6.54%	-4.24%	-13.25%	NYSE Arca
SPDR GOLD SHARES	USD	178.29	0.45%	1.96%	3.64%	4.29%	NYSE Arca
ISHARES 20+ YEAR TREASURY BO	USD	136.68	-1.38%	0.66%	-4.05%	-7.77%	NASDAQ GM
INVESCO QQQ TRUST SERIES 1	USD	329.42	-2.56%	-7.48%	-6.76%	-17.20%	NASDAQ GM
ISHARES BIOTECHNOLOGY ETF	USD	121.50	-2.14%	-6.47%	-6.44%	-20.39%	NASDAQ GM
ENERGY SELECT SECTOR SPDR	USD	67.64	1.03%	-1.37%	7.59%	21.87%	NYSE Arca
PROSHARES ULTRA VIX ST FUTUR	USD	18.28	8.68%	30.29%	3.39%	47.06%	Cboe BZX
UNITED STATES OIL FUND LP	USD	66.24	1.07%	4.25%	10.20%	21.85%	NYSE Arca
ISHARES MSCI BRAZIL ETF	USD	33.51	0.18%	-0.39%	13.55%	19.38%	NYSE Arca
SPDR S&P OIL & GAS EXP & PR	USD	108.12	1.74%	-1.29%	5.63%	12.78%	NYSE Arca
UTILITIES SELECT SECTOR SPDR	USD	65.03	-1.69%	-1.92%	-4.62%	-9.15%	NYSE Arca
ISHARES US REAL ESTATE ETF	USD	99.21	-1.76%	-3.87%	-6.00%	-14.58%	NYSE Arca
SPDR S&P BIOTECH ETF	USD	85.10	-0.40%	-10.09%	-7.61%	-23.99%	NYSE Arca
ISHARES IBXX INVESTMENT GRA	USD	122.40	-0.91%	-0.72%	-4.75%	-7.64%	NYSE Arca
ISHARES JIP MORGAN US EMERGI	USD	99.99	-1.68%	-3.34%	-4.66%	-8.32%	NASDAQ GM
REAL ESTATE SELECT SECT SPDR	USD	43.98	-1.30%	-2.85%	-6.41%	-15.11%	NYSE Arca
ISHARES CHINA LARGE-CAP ETF	USD	35.31	-1.18%	-7.32%	-6.22%	-3.47%	NYSE Arca
CONSUMER STAPLES SPDR	USD	74.83	-0.81%	-0.64%	-1.16%	-2.96%	NYSE Arca
VANECK JUNIOR GOLD MINERS	USD	43.40	2.99%	1.71%	7.40%	3.51%	NYSE Arca
SPDR BLOOMBERG HIGH YIELD BO	USD	103.00	-0.16%	-0.66%	-3.27%	-5.13%	NYSE Arca
VANGUARD REAL ESTATE ETF	USD	99.96	-1.65%	-3.63%	-5.19%	-13.84%	NYSE Arca
GRAYSCALE BITCOIN TRUST BTC	USD	25.63	-1.16%	-17.64%	-1.03%	-25.17%	OTC US



Source: Bloomberg

Capital Market Laboratory Coordinator: Economist Bruno Bellido
Collaboration: Sebastian Ore, Fabrizio Lavalle, Miguel Solimano and Jhonatan Cueva
email: pulso@pulsobursatil.ulima.edu.pe
facebook: www.facebook.com/pulsobursatil.ul

LIMA

Stocks

Ticker	Currency	Price	1D*	5D*	30D*	YTD*	Frequency	Volume (US\$)	Beta	Dividend Yield (%)	Price Earning	Market Cap. (M US\$)	Economic Sector*	Index Weight
▼ ALICORC1 PE**	S/.	6.25	-0.32%	1.51%	0.76%	8.08%	100.00%	19,793	0.73	13.36	14.94	1,426.44	Industrial	3.53%
ATACOCB1 PE**	S/.	0.13	0.00%	0.00%	-7.14%	8.33%	21.05%	939	1.05	0.00	-	33.89	Mining	1.02%
- BACKUS11 PE**	S/.	24.00	0.00%	-2.00%	12.15%	17.07%	94.74%	8,526	0.71	12.98	8.38	8,526.49	Industrial	0.82%
▼ BAP PE**	US\$	150.63	-0.77%	-4.74%	9.42%	21.69%	100.00%	506,395	1.22	0.81	-	14,216.81	Diverse	5.82%
▲ BVN PE**	US\$	9.85	3.14%	1.76%	17.96%	34.93%	94.74%	763,873	1.30	0.00	-	2,710.34	Mining	5.88%
▲ CASAGRC1 PE**	S/.	9.27	0.54%	-0.22%	-40.96%	1.87%	94.74%	44,842	0.90	58.27	5.59	209.05	Agricultural	1.31%
▼ BVVAC1 PE**	S/.	2.08	-0.48%	-1.42%	4.00%	14.92%	94.74%	171,425	0.81	2.18	9.06	3,763.45	Finance	2.85%
▼ CORARE11 PE**	S/.	1.84	-0.54%	-0.54%	0.00%	6.98%	100.00%	27,351	0.82	14.98	2.79	609.29	Industrial	1.72%
▲ CPACASC1 PE**	S/.	5.05	1.00%	-1.37%	4.12%	2.02%	100.00%	2,704	0.59	15.64	14.03	625.25	Industrial	2.38%
- CVERDEC1 PE**	US\$	41.85	0.00%	-8.02%	-2.90%	12.41%	100.00%	440,820	1.11	4.78	12.29	14,649.84	Mining	5.25%
- ENGEPEC1 PE**	S/.	2.15	0.00%	0.00%	-2.27%	3.86%	36.84%	74,539	0.66	0.00	8.60	1,378.87	Public Services	1.44%
- ENDISPC1**	S/.	4.30	0.00%	0.00%	0.00%	7.50%	21.05%	559	0.79	0.00	8.33	735.10	Public Services	0.98%
- FERREYC1 PE**	S/.	2.42	0.00%	0.41%	-1.22%	18.05%	100.00%	50,914	0.97	8.13	6.08	632.12	Diverse	4.90%
- AENZAC1 PE**	S/.	1.36	0.00%	-0.73%	-6.21%	-0.73%	84.21%	287	1.15	0.00	-	317.46	Diverse	4.05%
▼ IFS PE**	US\$	31.17	-1.42%	-3.80%	2.20%	16.09%	100.00%	113,978	1.12	4.56	7.51	3,598.51	Diverse	7.22%
▼ INRETC1 PE**	US\$	34.20	-0.87%	-2.29%	-3.93%	-2.15%	100.00%	1,252,006	0.76	3.98	68.82	3,516.01	Diverse	5.28%
- LUSURC1 PE**	S/.	17.90	0.00%	-0.56%	21.36%	25.70%	78.95%	5,319	#N/A N/A	0.00	15.07	2,333.53	Public Services	1.81%
▲ MINSURI1 PE**	S/.	5.63	0.54%	-1.23%	20.30%	42.53%	100.00%	118,688	0.95	12.21	4.66	4,345.38	Mining	3.09%
- PML PE**	US\$	0.14	0.00%	0.00%	-6.67%	16.67%	21.05%	461	1.19	0.00	-	35.69	Mining	2.12%
▼ SCCO PE**	US\$	66.38	-0.78%	-2.88%	2.91%	7.45%	89.47%	40,828	1.06	5.42	14.61	51,318.38	Mining	2.14%
- SIDERC1 PE**	S/.	1.60	0.00%	0.00%	-3.61%	0.00%	100.00%	4,268	0.85	27.66	3.47	299.84	Industrial	1.43%
▲ TV PE**	US\$	1.02	0.48%	0.00%	-22.14%	-21.54%	73.68%	8,160	1.20	0.00	-	100.89	Mining	2.93%
▼ UNACEMC1 PE**	S/.	2.42	-1.22%	-6.92%	0.41%	0.83%	100.00%	7,138	0.75	4.13	10.13	1,177.92	Industrial	3.00%
- VOLCABC1 PE**	S/.	0.75	0.00%	1.35%	5.63%	25.00%	100.00%	261,042	1.28	0.00	21.09	818.52	Mining	5.90%
- NEXAPEC1 PE**	S/.	3.39	0.00%	-1.17%	-12.40%	-4.78%	63.16%	1,588	1.13	0.00	8.48	1,153.81	Mining	1.56%

Quantity of shares: 25
 Source: Bloomberg, Económica
 * Bloomberg Industry Classification System
 ** PER is used in the stock market and original currency of the instrument
 *Legend: Variation 1D: 1 Day; 5D: 5 Days; 1M: 1 Month; YTD: Var.% 12/31/21 to date

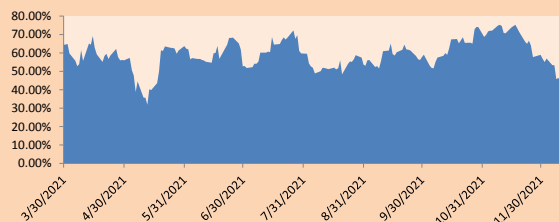
Sectorial Indices

	Close	1D*	5D*	30D*	YTD*	Beta
▲ S&P/BVLMining	448.75	0.25%	-2.45%	3.27%	9.03%	0.87
▼ S&P/BVLConsumer	1,168.36	-0.22%	-1.70%	-4.50%	1.77%	0.74
▼ S&P/BVLIndustrials	276.79	-0.25%	-2.35%	0.24%	7.25%	0.78
▼ S&P/BVLFinancials	1,023.91	-0.77%	-4.85%	5.08%	13.00%	1.24
▼ S&P/BVLConstruction	293.04	-0.35%	-3.44%	0.85%	3.41%	0.71
- S&P/BVLPublicSvcs	593.26	0.00%	0.83%	2.67%	8.16%	0.27
- S&P/BVLElectricUtil	579.17	0.00%	0.83%	2.67%	8.16%	0.27

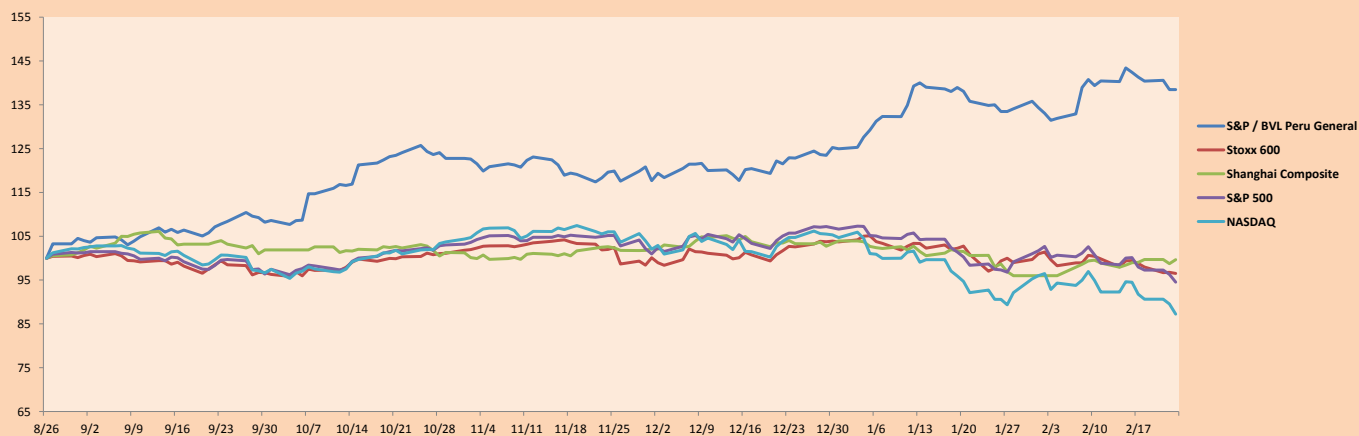
S&P/BVLConstructionTRPEN

*Legend: Variation 1D: 1 Day; 5D: 5 Days; 1M: 1 Month; YTD: Var.% 12/31/21 to date

Correlation Graph of Returns of Mining Index against Metallic Index of London (3 months)



Indices (6 months)



Base: 26/08/21=100
 Source: Bloomberg

Capital Market Laboratory Coordinator: Economist Bruno Bellido
 Collaboration: Sebastian Ore, Fabrizio Lavalle, Miguel Solimano and Jhonatan Cueva
 email: pulsobursatil@ullima.edu.pe
 facebook: www.facebook.com/pulsobursatil.ul

SOVEREIGN RATING

RISK RATINGS

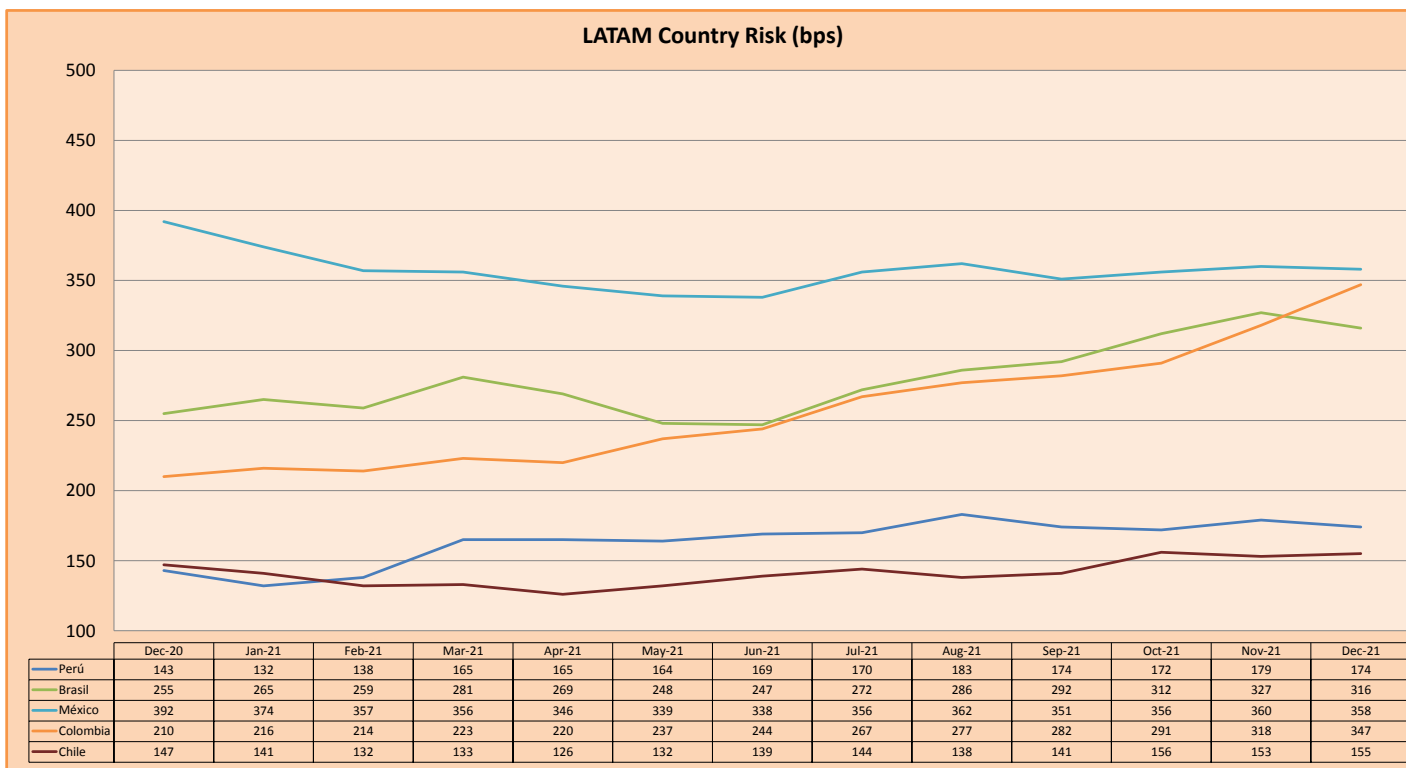
Moody's	S&P	Fitch	
Aaa	AAA	AAA	Prime
Aa1	AA+	AA+	High credit quality
Aa2	AA	AA	
Aa3	AA-	AA-	
A1	A+	A+	Medium-high grade, with low credit risk
A2	A	A	
A3	A-	A-	
Baa1	BBB+	BBB+	Moderate Credit Risk
Baa2	BBB	BBB	
Baa3	BBB-	BBB-	
Ba1	BB+	BB+	It has speculative elements and it is subject to substantial credit risk
Ba2	BB	BB	
Ba3	BB-	BB-	
B1	B+	B+	It is considered speculative and it has high credit risk
B2	B	B	
B3	B-	B-	
Caa1	CCC+		Bad credit conditions and it is subject to high credit risk
Caa2	CCC		
Caa3	CCC-		
Ca	C		Very close to default or in default
		DDD	
C	D	DD	

Source: Bloomberg

Latin America Credit Rating			
Clasificadora de riesgo			
Country	Moody's	Fitch	S&P
Peru	Baa1	BBB	BBB+
México	Ba2	BB-	BB-
Venezuela	C	WD	NR
Brazil	Ba2	BB-	BB-
Colombia	Baa2	BB+	BB+
Chile	A1	A-	A
Argentine	Ca	WD	CCC+
Panama	Baa2	BBB-	BBB

Source: Bloomberg

LATAM Country Risk (bps)



Source: BCRP

Capital Market Laboratory Coordinator: Economist Bruno Bellido
Collaboration: Sebastian Ore, Fabrizio Lavalle, Miguel Solimano and Jhonatan Cueva
email: pulsobursatil@ulima.edu.pe
facebook: www.facebook.com/pulsobursatil.ul