

PULSO BURSÁTIL

FACULTAD DE CIENCIAS EMPRESARIALES Y ECONÓMICAS
CARRERA DE ECONOMÍA
LABORATORIO DE MERCADO DE CAPITALES

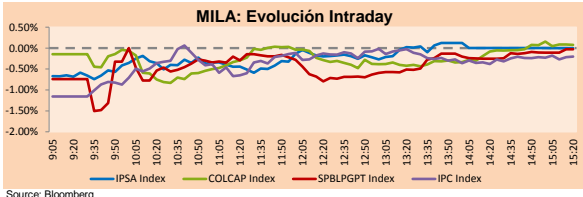


MILA

Lima, March 9, 2022

Main Indexes	Close	1 D	5 D	1 M	YTD	Cap. Burs. (US\$ bill)
▲ IPSA (Chile)	4,656.03	1.69%	3.76%	0.31%	8.07%	103.88
▲ IGPA (Chile)	23,629.57	1.69%	4.34%	1.37%	9.56%	125.12
▲ COLSC (Colombia)	1,060.01	0.55%	1.18%	2.26%	8.93%	7.33
▲ COLCAP (Colombia)	1,537.52	0.15%	0.47%	4.22%	8.97%	92.37
▲ S&P/BVL (Perú)*	24,754.65	0.73%	2.09%	5.13%	17.26%	120.26
▲ S&P/BVL SEL (Perú)	648.31	0.35%	1.37%	4.74%	15.04%	109.63
▲ S&P/BVL LIMA 25	35,414.74	0.50%	1.85%	3.18%	16.98%	118.88
▲ IPC (México)	53,911.76	1.17%	1.15%	2.49%	1.20%	326.29
▲ S&P MILA 40	537.69	1.70%	3.97%	6.04%	20.87%	6,822.26

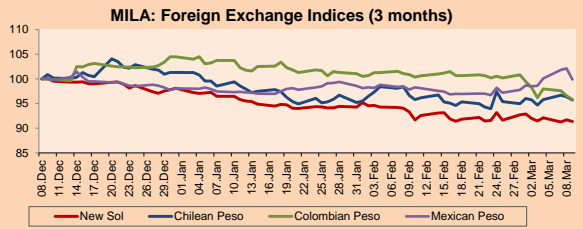
*Legend: Variation 1D: 1 day; 5D: 5 days; 1M: 1 Month; YTD: Var% 12/31/21 to date



Source: Bloomberg

Currency	Price	1D*	5D*	30 D*	YTD*
▼ Sol (PEN)	3,7270	-0.34%	-0.63%	-3.00%	-6.80%
▼ Chilean Peso (CLP)	804.83	-0.68%	-0.03%	-2.42%	-5.54%
▼ Colombian Peso (COP)	3,742.90	-0.77%	-2.44%	-5.61%	-8.27%
▼ Mexican Peso (MXN)	20.91	-2.19%	1.40%	1.52%	1.85%

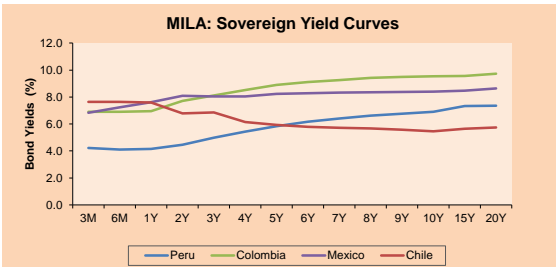
*Legend: Variation 1D: 1 day; 5D: 5 days; 1M: 1 Month; YTD: Var% 12/31/21 to date



Base: 08/12/21=100

Source: Bloomberg

Fixed Income	Currency	Price	Bid Yield (%)	Ask Yield (%)	Duration
PERU 7.35 07/21/25	USD	114.312	2.92	2.79	3.01
PERU 4.125 08/25/27	USD	104.829	3.20	3.11	4.88
PERU 8.75 11/21/33	USD	145.082	3.95	3.87	8.02
PERU 6.55 03/14/37	USD	125.748	4.26	4.18	9.54
PERU 5.625 11/18/2050	USD	124.609	4.15	4.14	15.46
CHILE 2.25 10/30/22	USD	100.739	1.33	0.83	0.63
CHILE 3.125 01/21/26	USD	102.272	2.57	2.44	3.63
CHILE 3.625 10/30/42	USD	92.392	4.21	4.15	14.18
COLOM 11.85 03/09/28	USD	145.566	3.45	3.32	4.67
COLOM 10.375 01/28/33	USD	135.383	6.02	5.82	7.09
COLOM 7.375 09/18/37	USD	109.752	6.41	6.34	9.20
COLOM 6.125 01/18/41	USD	94.877	6.62	6.59	10.81
MEX 4 10/02/23	USD	94.877	6.619	6.588	10.81
MEX5.55 01/45	USD	107.39	5.03	4.98	13.27



Source: Bloomberg

Equity

Largest gains	Exchange	Currency	Price	▲ %
ENGIE ENERGIA CH	Chile	CLP	450.00	6.88
GRUMA SAB-B	Mexico	MXN	267.66	6.26
SONDA SA	Chile	CLP	298.73	6.23
CREDECORP LTD	Peru	USD	163	5.41
ENEL CHILE SA	Chile	CLP	23.00	5.41

Per Turnover	Exchange	Amount (US\$)
WALMART DE MEXIC	Mexico	91,341,840
GRUPO F BANORT-O	Mexico	65,340,960
AMERICA MOVILL-L	Mexico	56,573,946
GRUPO MEXICO-B	Mexico	42,538,807
AERO DEL PACIF-B	Mexico	37,501,707

Largest losses	Exchange	Currency	Price	▼ %
INDUSTRIAS PENOL	Mexico	MXN	274.33	-10.10
BUENAVENTURA-ADI	Peru	USD	11	-6.08
CAP	Chile	CLP	10900.00	-3.54
ECOPETROL	Colombia	COP	3271	-3.51
GRUPO MEXICO-B	Mexico	MXN	114.42	-2.45

Per Volume	Exchange	Volume
ITAU CORPBANCA	Chile	2,123,962,221
ENEL CHILE SA	Chile	303,486,127
BANCO SANTANDER	Chile	89,182,253
CEMEX SAB-CPO	Mexico	59,654,915
AMERICA MOVILL-L	Mexico	59,506,854

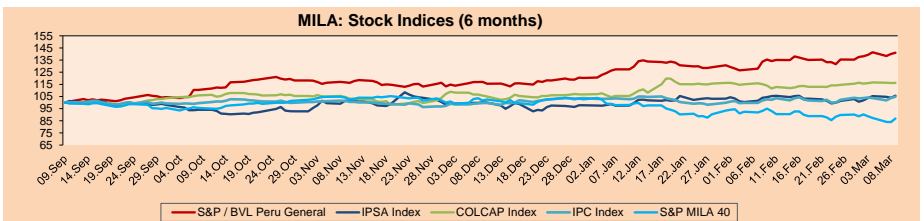
MILA

Peru: The BVL General Index ended today's session with a positive result of +0.73%. The index maintains an annual cumulative positive trend of +17.26% in local currency, while the dollar-adjusted performance amounted to +25.82%. Then, the S&P / BVL Peru SEL varied by +0.35% while the S&P / BVL LIMA 25 by +0.50%. The PEN spot reached S/. 3.7273. Headline: MEF will boost public investment with training in local and regional governments.

Chile: The IPSA index ended the day with a positive return of +1.69%. The most benefited sectors of the day were Industrials (+7.47%) and Information Technology (+6.23%). The best-performing stocks were Compañía Sudamérica de Vapores S.A. (+7.47%) and Engie Energía Chile (+6.88%). Headline: Piñera signs bill to promote the financing of technological enterprises.

Colombia: The COLCAP index ended the session with a positive return of +0.74%. The sectors that benefited the most during the day were Utilities (+2.39%) and Finance (+0.65%). The best performing stocks were Intercorrexión Eléctrica SA ESP (+3.72%) and BanColombia SA (+2.25%). Headline: Rice producers seek to increase their competitiveness by 2030.

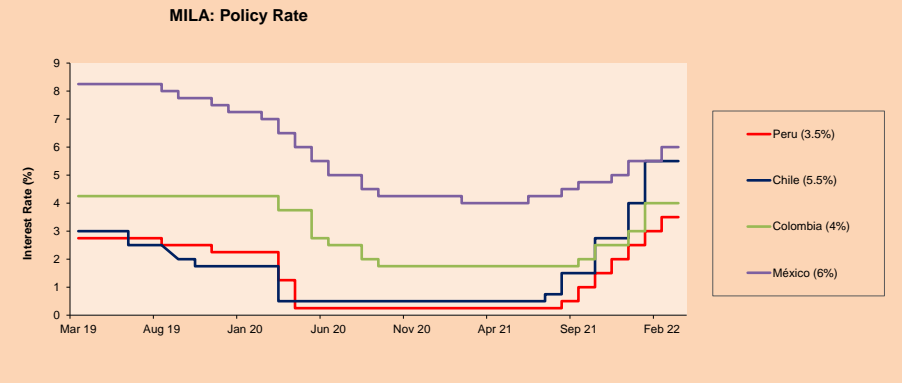
Mexico: The IPC index closed the day in positive territory +1.17%. The best performing sectors of the day were Industrials (+3.33%) and Health Care (+2.30%). The best performing stocks were Gruma SAB de CV (+6.26%) and Grupo Carso SAB de CV (+5.08%). Headline: Mexico: inflation accelerates in February, reaches 7.28% annual rate.



Base: 10/09/21=100

Source: Bloomberg

ETFs	Curr.	Close	1D	5D	30 D	YTD	Exchange
▲ iShares MSCI All Peru Caped Index Fund	USD	36.63	1.13%	2.92%	14.76%	23.67%	NYSE Arca
▲ iShares MSCI All Chile Caped Index Fund	USD	26.86	2.44%	4.80%	7.61%	16.33%	Cboe BZX
▲ Global X MSCI Colombia	USD	11.69	2.23%	3.73%	7.64%	16.98%	NYSE Arca
▲ iShares MSCI Mexico Capped	USD	49.68	3.76%	-0.56%	2.88%	-1.82%	NYSE Arca
▲ iShares MSCI Emerging Markets	USD	44.31	2.83%	-4.07%	-8.75%	-9.29%	NYSE Arca
▲ Vanguard FTSE Emerging Markets	USD	45.47	2.53%	-3.91%	-8.10%	-8.07%	NYSE Arca
▲ iShares Core MSCI Emerging Markets	USD	54.48	2.87%	-3.76%	-8.21%	-8.99%	NYSE Arca
▲ iShares JP Morgan Emerging Markets Bonds	USD	60.51	1.60%	-2.72%	-3.03%	-3.68%	Cboe BZX
▲ Morgan Stanley Emerging Markets Domestic	USD	4.88	1.24%	-4.31%	-10.62%	-10.95%	New York



Source: Bloomberg

Capital Market Laboratory Coordinator: MS Javier Penny
Collaboration: Sebastian Ore, Fabrizio Lavalle, Miguel Solimano and Jhonatan Cueva
email: pulsobursatil@ulima.edu.pe
facebook: www.facebook.com/pulsobursatil.ul

LIMA

Stocks

Ticker	Currency	Price	1D*	5D*	30D*	YTD*	Frequency	Volume (US\$)	Beta	Dividend Yield (%)	Price Earning	Market Cap. (M US\$)	Economic Sector*	Index Weight	
▲ ALCORC1 PE**	S/.	5.85	0.55%	1.18%	2.26%	8.93%	100.00%	128,535	0.77	14.27	13.99	1,338.30	Industrial	3.53%	
▲ ATACOCB1 PE**	S/.	0.14	0.00%	7.69%	7.69%	16.67%	25.00%	692	1.11	0.00	-	34.48	Mining	1.02%	
▲ BACKUS11 PE**	S/.	23.10	0.43%	-3.75%	0.00%	12.68%	85.00%	65,819	0.75	13.49	8.07	8,159.25	Industrial	0.82%	
▲ BAP PE**	US\$	162.55	5.41%	6.24%	20.14%	31.32%	100.00%	1,339,029	1.33	0.75	-	15,341.85	Diverse	5.82%	
▼ BVN PE**	US\$	10.50	-6.08%	0.19%	26.66%	43.84%	95.00%	464,904	1.27	0.00	-	2,889.20	Mining	5.88%	
▼ CASAGRC1 PE**	S/.	9.10	-2.15%	1.11%	-2.15%	0.00%	90.00%	16,466	0.79	59.36	5.49	205.67	Agricultural	1.31%	
▲ BBVAC1 PE**	S/.	2.15	3.37%	0.47%	13.16%	18.78%	100.00%	88,660	0.81	2.11	9.37	3,898.77	Finance	2.85%	
- CORARE11 PE**	S/.	1.84	0.00%	0.00%	1.66%	6.98%	95.00%	10,478	0.75	14.98	2.79	610.65	Industrial	1.72%	
▼ CPACASC1 PE**	S/.	4.83	-1.43%	-3.21%	-3.01%	-2.42%	100.00%	171,365	0.62	16.36	13.42	601.51	Industrial	2.38%	
▼ CVERDEC1 PE**	US\$	46.50	-0.83%	2.65%	8.14%	24.90%	95.00%	75,509	1.03	4.30	13.66	16,277.60	Mining	5.25%	
- ENGEPEC1 PE**	S/.	2.16	0.00%	0.47%	4.85%	4.35%	85.00%	38,033	0.70	14.40	8.64	1,388.36	Public Services	1.44%	
- ENDISPC1**	S/.	4.40	0.00%	-1.12%	1.15%	10.00%	50.00%	3,935	0.83	7.51	8.53	753.87	Public Services	0.98%	
▲ FERREYC1 PE**	S/.	2.40	3.90%	1.69%	1.27%	17.07%	100.00%	131,546	0.88	8.20	5.41	628.29	Diverse	4.90%	
- AENZAC1 PE**	S/.	1.30	0.00%	-3.70%	-7.14%	-5.11%	100.00%	29,610	0.99	0.00	-	304.13	Diverse	4.05%	
▲ IFS PE**	US\$	33.27	2.21%	3.64%	4.16%	23.91%	100.00%	530,476	1.17	4.27	8.00	3,840.95	Diverse	7.22%	
▲ INRETC1 PE**	US\$	37.25	2.05%	2.05%	10.37%	6.58%	100.00%	54,931	0.77	3.66	74.79	3,829.57	Diverse	5.28%	
- LUSURC1 PE**	S/.	16.80	0.00%	-4.00%	-6.82%	17.98%	70.00%	1,037	#N/A	N/A	0.00	14.14	2,195.00	Public Services	1.81%
▲ MINSUR11 PE**	S/.	6.05	1.68%	0.00%	27.10%	53.16%	100.00%	92,293	1.02	11.36	2.83	4,679.95	Mining	3.09%	
▼ PML PE**	US\$	0.14	-12.50%	0.00%	7.69%	16.67%	50.00%	2,840	1.14	0.00	-	37.54	Mining	2.12%	
▲ SCCO PE**	US\$	75.25	0.82%	2.94%	18.58%	21.80%	95.00%	58,851	1.11	4.78	16.57	58,174.79	Mining	2.14%	
- SIDERC1 PE**	S/.	1.56	0.00%	0.00%	-3.70%	-2.50%	95.00%	32,549	0.80	28.37	3.39	293.00	Industrial	1.43%	
- TV PE**	US\$	1.17	0.00%	14.71%	24.47%	-10.00%	90.00%	13,572	1.14	0.00	-	115.72	Mining	2.93%	
▼ UNACEM1 PE**	S/.	2.30	-0.43%	-6.12%	-7.26%	-4.17%	80.00%	37,684	0.60	4.35	9.62	1,122.00	Industrial	3.00%	
- VOLCABC1 PE**	S/.	0.88	0.00%	14.29%	31.34%	46.67%	100.00%	1,280,528	0.92	0.00	24.80	962.54	Mining	5.90%	
- NEXAPEC1 PE**	S/.	3.85	0.00%	16.67%	6.94%	8.15%	45.00%	2,257	1.11	0.00	9.65	1,312.59	Mining	1.56%	

Quantity of shares: 25
 Source: Bloomberg, Económica
 * Bloomberg Industry Classification System
 ** PER is used in the stock market and original currency of the instrument
 *Legend: Variation 1D: 1 Day; 5D: 5 Days; 1M: 1 Month; YTD: Var.% 12/31/21 to date

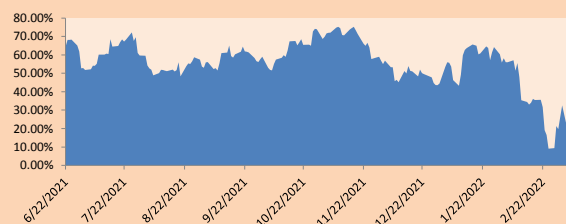
Sectorial Indices

	Close	1D*	5D*	30D*	YTD*	Beta
▼ S&P/BVLMining	499.83	-1.21%	2.50%	17.50%	21.44%	1.07
▲ S&P/BVLConsumer	1,177.18	0.71%	-1.92%	-1.07%	2.54%	0.61
▲ S&P/BVLIndustrials	268.99	0.78%	-2.20%	-2.54%	4.23%	0.51
▲ S&P/BVLFinancials	1,099.66	4.59%	5.11%	14.42%	21.36%	1.40
▼ S&P/BVLConstruction	282.39	-0.48%	-3.76%	-4.06%	-0.35%	0.40
- S&P/BVLPublicSvcs	596.40	0.00%	0.03%	2.02%	8.73%	0.14
- S&P/BVLElectricUtil	582.24	0.00%	0.03%	2.02%	8.73%	0.14

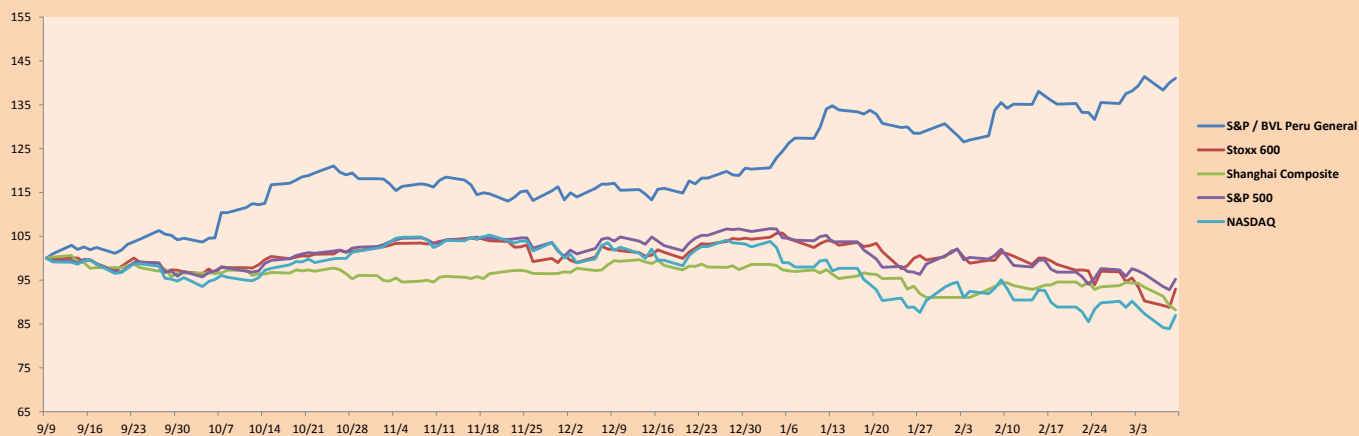
S&P/BVLConstructionTRPEN

*Legend: Variation 1D: 1 Day; 5D: 5 Days; 1M: 1 Month; YTD: Var.% 12/31/21 to date

Correlation Graph of Returns of Mining Index against Metallic Index of London (3 months)



Indices (6 months)



Base: 09/09/21=100
 Source: Bloomberg

Capital Market Laboratory Coordinator: MS Javier Penny
 Collaboration: Sebastian Ore, Fabrizio Lavallo, Miguel Solimano and Jhonatan Cueva
 email: pulsobursatil@ullima.edu.pe
 facebook: www.facebook.com/pulsobursatil.ul

SOVEREIGN RATING

RISK RATINGS

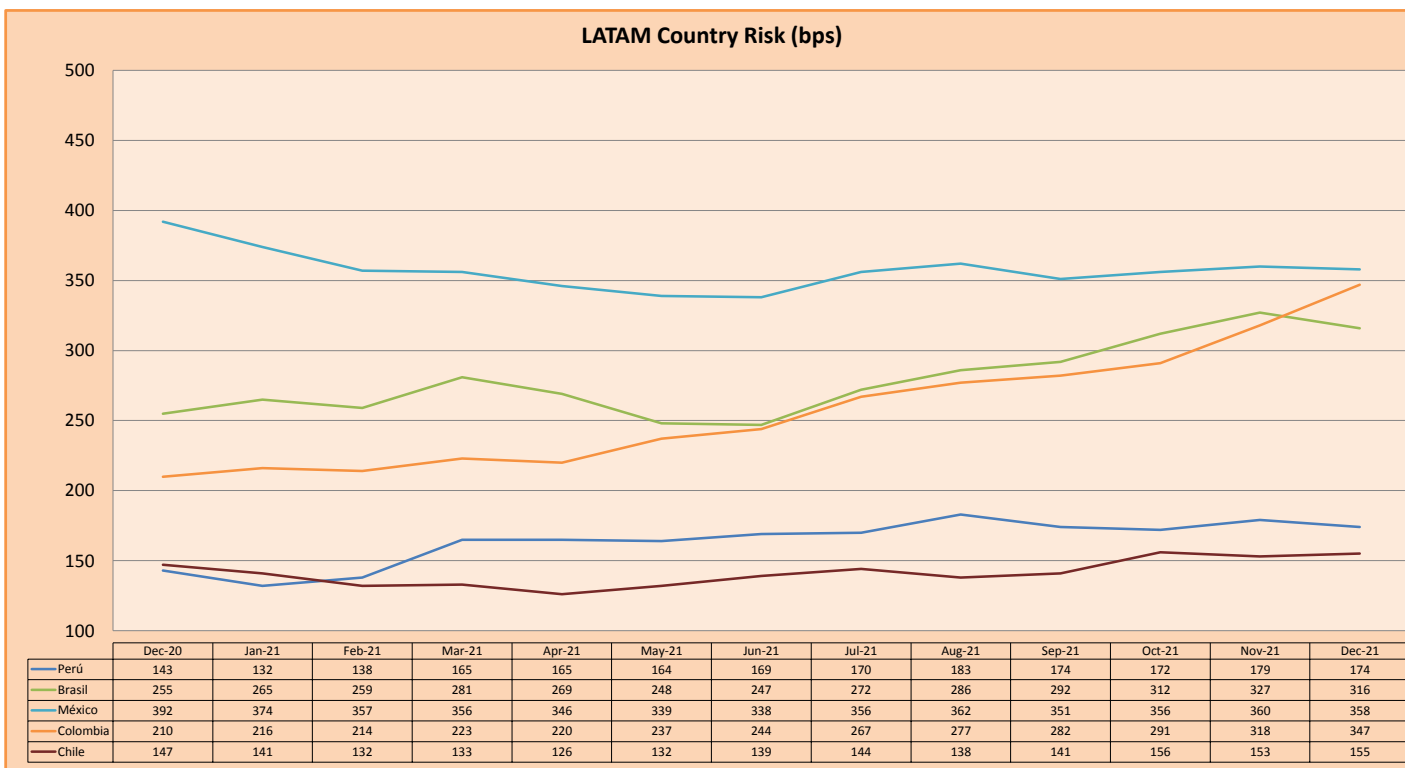
Moody's	S&P	Fitch	
Aaa	AAA	AAA	Prime
Aa1	AA+	AA+	High credit quality
Aa2	AA	AA	
Aa3	AA-	AA-	
A1	A+	A+	Medium-high grade, with low credit risk
A2	A	A	
A3	A-	A-	
Baa1	BBB+	BBB+	Moderate Credit Risk
Baa2	BBB	BBB	
Baa3	BBB-	BBB-	
Ba1	BB+	BB+	It has speculative elements and it is subject to substantial credit risk
Ba2	BB	BB	
Ba3	BB-	BB-	
B1	B+	B+	It is considered speculative and it has high credit risk
B2	B	B	
B3	B-	B-	
Caa1	CCC+		Bad credit conditions and it is subject to high credit risk
Caa2	CCC		
Caa3	CCC-	CCC	
Ca	CC		Very close to default or in default
	C		
C	D	DDD DD D	

Source: Bloomberg

Latin America Credit Rating			
Clasificadora de riesgo			
Country	Moody's	Fitch	S&P
Peru	Baa1	BBB	BBB+
México	Ba2	BB-	BB-
Venezuela	C	WD	NR
Brazil	Ba2	BB-	BB-
Colombia	Baa2	BB+	BB+
Chile	A1	A-	A
Argentine	Ca	WD	CCC+
Panama	Baa2	BBB-	BBB

Source: Bloomberg

LATAM Country Risk (bps)



Source: BCRP

Capital Market Laboratory Coordinator: MS Javier Penny
Collaboration: Sebastian Ore, Fabrizio Lavalle, Miguel Solimano and Jhonatan Cueva
email: pulsobursatil@ulima.edu.pe
facebook: www.facebook.com/pulsobursatil.ul