

# PULSO BURSÁTIL

FACULTAD DE CIENCIAS EMPRESARIALES Y ECONÓMICAS  
CARRERA DE ECONOMÍA  
LABORATORIO DE MERCADO DE CAPITALES

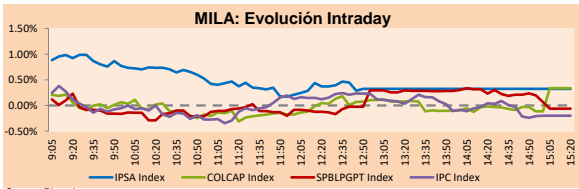


## MILA

Lima, March 11, 2022

Main Indexes	Close	1 D	5 D	1 M	YTD	Cap. Burs. (US\$ bill)
▲ IPSA (Chile)	4,633.35	0.53%	-0.17%	-0.41%	7.54%	102.74
▲ IGPA (Chile)	23,583.45	0.56%	0.02%	0.74%	9.35%	123.96
▲ COLCAP (Colombia)	1,053.15	-0.06%	0.49%	1.57%	8.22%	7.14
▲ COLCAP (Colombia)	1,548.46	0.34%	0.41%	3.73%	9.74%	91.64
▲ S&P/BVL (Perú)*	24,774.89	-0.06%	-0.20%	4.43%	17.35%	121.23
▼ S&P/BVL SEL (Perú)	648.62	-0.10%	-1.35%	3.95%	15.09%	110.84
▲ S&P/BVL LIMA 25	35,764.94	0.26%	0.71%	4.04%	18.14%	119.84
▼ IPC (México)	53,300.70	-0.16%	-0.04%	0.13%	0.05%	323.95
▲ S&P MILA 40	533.04	0.11%	0.26%	6.08%	19.82%	6,775.23

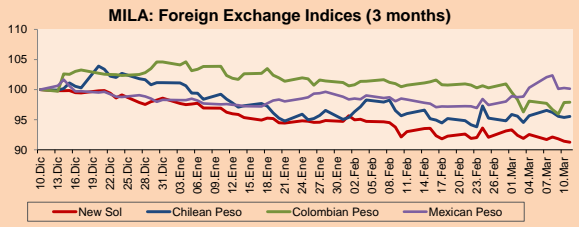
\*Legend: Variation 1D: 1 day; 5D: 5 days; 1M: 1 Month; YTD: Var% 12/31/21 to date



Source: Bloomberg

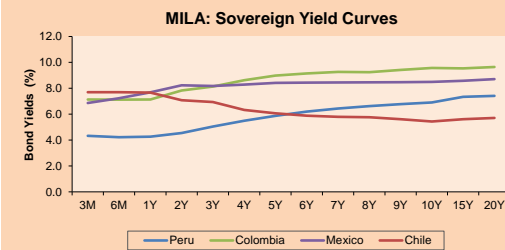
Currency	Price	1D*	5D*	30 D*	YTD*
▼ Sol (PEN)	3,7043	-0.19%	-1.39%	-2.75%	-7.37%
▲ Chilean Peso (CLP)	804.65	0.17%	-0.12%	-1.02%	-5.56%
▲ Colombian Peso (COP)	3,819.95	0.06%	-0.17%	-3.04%	-6.38%
▲ Mexican Peso (MXN)	20.91	-0.12%	-0.17%	2.13%	1.87%

\*Legend: Variation 1D: 1 day; 5D: 5 days; 1M: 1 Month; YTD: Var% 12/31/21 to date



Base: 10/12/21=100  
Source: Bloomberg

Fixed Income	Currency	Price	Bid Yield (%)	Ask Yield (%)	Duration
PERU 7.35 07/21/25	USD	114.085	2.97	2.83	3.00
PERU 4.125 08/25/27	USD	104.651	3.24	3.14	4.87
PERU 8.75 11/21/33	USD	144.731	3.98	3.89	8.01
PERU 6.55 03/14/37	USD	125.546	4.27	4.20	9.78
PERU 5.625 11/18/2050	USD	124.535	4.17	4.14	15.49
CHILE 2.25 10/30/22	USD	100.755	1.31	0.76	0.62
CHILE 3.125 01/21/26	USD	102.186	2.60	2.45	3.62
CHILE 3.625 10/30/42	USD	91.814	4.27	4.18	14.14
COLOM 11.85 03/09/28	USD	145.584	3.44	3.31	4.66
COLOM 10.375 01/28/33	USD	135.375	6.04	5.79	7.11
COLOM 7.375 09/18/37	USD	110.203	6.37	6.29	9.24
COLOM 6.125 01/18/41	USD	95.198	6.62	6.53	10.88
MEX 4 10/02/23	USD	95.198	6.615	6.529	10.88
MEX5.55 01/45	USD	107.052	5.05	5.00	13.27



Source: Bloomberg

## Equity

Largest gains	Exchange	Currency	Price	▲ %
CENCOSUD SA	Chile	CLP	1468.00	3.93
BANCO CRED INVER	Chile	CLP	27800.00	3.34
FOMENTO ECON-UBD	Mexico	MXN	164.88	2.92
GRUPO F BANORT-O	Mexico	MXN	140.16	2.56
SMU SA	Chile	CLP	84.78	2.38

Per Turnover	Exchange	Amount (US\$)
GRUPO F BANORT-O	Mexico	53,864,533
AMERICA MOVIL-L	Mexico	47,471,845
WALMART DE MEXIC	Mexico	34,031,242
GRUPO MEXICO-B	Mexico	32,105,349
SOQUIMICH-B	Chile	26,397,887

Largest losses	Exchange	Currency	Price	▼ %
INDUSTRIAS PENOL	Mexico	MXN	262.69	-4.97
ENGIE ENERGIA CH	Chile	CLP	418.1	-3.88
WALMART DE MEXIC	Mexico	MXN	76.08	-3.08
CERVEZAS	Chile	CLP	5585	-2.85
KIMBERLY-CLA M-A	Mexico	MXN	26.92	-2.82

Per Volume	Exchange	Volume
ITAU CORPBANCA	Chile	1,328,395,518
ENEL CHILE SA	Chile	93,644,115
BANCO DE CHILE	Chile	68,504,465
BANCO SANTANDER	Chile	58,448,297
ENEL AMERICAS SA	Chile	51,500,766

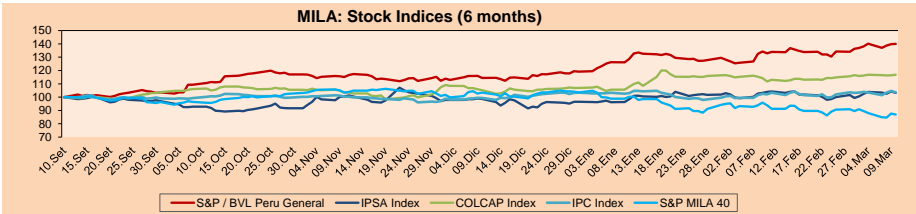
## MILA

Peru: The BVL General Index ended today's session with a negative result of -0.06%. The index maintains an annual cumulative positive trend of +17.35% in local currency, while the dollar-adjusted return amounts to +26.69%. Then, the S&P/BVL Peru SEL varied by -0.16% while the S&P/BVL LIMA 25 by +0.26%. The spot PEN reached S/3.7043. Headline: Twelve-month economic and business investment expectations fall, BCR reports.

Chile: The IPSA index ended the day with a positive result of +0.53%. The best performing sectors of the day were industrials (+3.55%) and information technology (+1.78%). The best performers were Cencosud SA (+3.93%) and South American Steamship Company (+3.55%). Headline: IPSA closes higher on the day Chile pivots on its political and economic direction.

Colombia: The COLCAP index ended the session with a slightly positive return of +0.34%. The best performing stocks are Ecopetrol SA (+1.25%) and Grupo Aval Acciones SA (+1.16%). Headline: VAT-free day exceeds target, with clothing in first place.

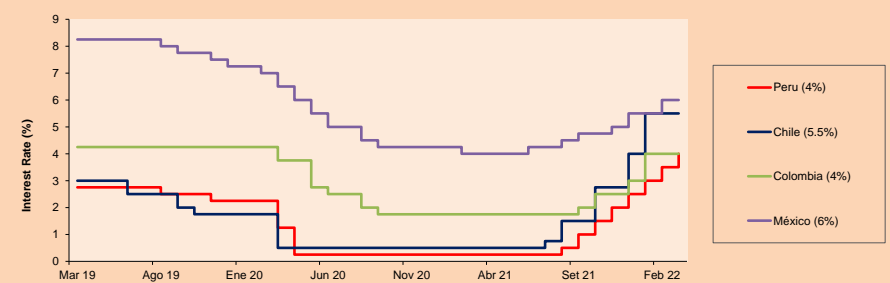
Mexico: The IPC index closed the day in negative territory at -0.16%. The worst performing sectors of the day were materials (-0.82%) and industrials (-0.76%). The worst performers were Controladora Vuela Compañía de Aviación (-5.87%) and Industrias Peñoles SAB (-4.97%). Headline: Peso slips against the dollar for the third week in a row



Base: 13/09/21=100  
Source: Bloomberg

ETFs	Curr.	Close	1D	5D	30 D	YTD	Exchange
▼ iShares MSCI All Peru Caped Index Fund	USD	36.82	-0.65%	1.68%	8.81%	24.31%	NYSE Arca
▼ iShares MSCI All Chile Caped Index Fund	USD	26.29	-1.76%	-2.49%	1.31%	13.86%	Cboe BZX
▼ Global X MSCI Colombia	USD	11.514	-0.57%	1.00%	6.22%	15.22%	NYSE Arca
▼ iShares MSCI Mexico Capped	USD	49.15	-0.14%	0.16%	-2.17%	-2.87%	NYSE Arca
▼ iShares MSCI Emerging Markets	USD	42.57	-2.09%	-4.59%	-14.52%	-12.86%	NYSE Arca
▼ Vanguard FTSE Emerging Markets	USD	43.86	-2.03%	-4.19%	-13.44%	-11.32%	NYSE Arca
▼ iShares Core MSCI Emerging Markets	USD	52.47	-1.98%	-4.29%	-13.67%	-12.35%	NYSE Arca
▼ iShares JP Morgan Emerging Markets Bonds	USD	59.295	-1.09%	-2.75%	-6.74%	-5.61%	Cboe BZX
▼ Morgan Stanley Emerging Markets Domestic	USD	4.72	-0.21%	-4.26%	-14.80%	-13.87%	New York

## MILA: Policy Rate



Source: Bloomberg

Capital Market Laboratory Coordinator: MS Javier Penny Pestana  
Collaboration: Sebastian Ore, Fabrizio Lavalle, Miguel Solimano y Jhonatan Cueva  
email: pulsobursatil@ulima.edu.pe  
facebook: www.facebook.com/pulsobursatil.ul

The content of this document is just for informational purposes. The information and opinions expressed should not be considered as recommendations for future decisions. Under any circumstances, the Capital Market Laboratory of University of Lima will be responsible for the use of the statements in this document.



# LIMA

## Stocks

Ticker	Currency	Price	1D*	5D*	30D*	YTD*	Frequency	Volume (US\$)	Beta	Dividend Yield (%)	Price Earning	Market Cap. (M US\$)	Economic Sector*	Index Weight
▼ ALICORC1 PE**	S/.	5.79	-0.06%	0.49%	1.57%	8.22%	100.00%	2,697,331	0.78	14.42	13.84	1,332.78	Industrial	3.53%
- ATACOBC1 PE**	S/.	0.14	0.00%	0.00%	7.69%	16.67%	20.00%	4	1.11	0.00	-	34.69	Mining	1.02%
▼ BACKUSI1 PE**	S/.	23.00	-2.13%	-4.17%	-2.13%	12.20%	85.00%	5,583	0.75	13.54	8.03	8,183.61	Industrial	0.82%
▲ BAP PE**	US\$	161.40	0.59%	4.81%	6.89%	30.39%	100.00%	746,441	1.33	0.75	-	15,233.31	Diverse	5.82%
▼ BVN PE**	US\$	10.90	-0.73%	-3.11%	20.44%	49.32%	95.00%	320,457	1.26	0.00	-	2,999.26	Mining	5.88%
▲ CASAGRC1 PE**	S/.	10.04	3.61%	6.92%	4.04%	10.33%	90.00%	24,634	0.79	53.80	6.06	228.31	Agricultural	1.31%
▼ BBVAC1 PE**	S/.	2.16	-0.46%	-1.37%	8.54%	19.34%	100.00%	56,839	0.81	2.10	9.41	3,940.90	Finance	2.85%
- CORAREI1 PE**	S/.	1.89	0.00%	3.28%	2.16%	9.88%	95.00%	6,515	0.75	14.58	2.86	616.85	Industrial	1.72%
▼ CPACASC1 PE**	S/.	4.80	-0.21%	-3.03%	-4.00%	-3.03%	100.00%	49,255	0.62	16.46	13.33	601.44	Industrial	2.38%
▲ CVERDEC1 PE**	US\$	48.00	2.13%	1.91%	3.23%	28.93%	95.00%	2,311,729	1.05	4.17	14.10	16,802.69	Mining	5.25%
▲ ENGEPEC1 PE**	S/.	2.20	1.38%	0.00%	8.91%	6.28%	85.00%	14,640	0.70	14.13	8.80	1,422.74	Public Services	1.44%
▲ ENDISPC1**	S/.	4.45	0.91%	0.00%	3.73%	11.25%	60.00%	2,825	0.83	7.42	8.62	767.11	Public Services	0.98%
▲ FERREYU1 PE**	S/.	2.44	1.24%	2.95%	-0.81%	19.02%	100.00%	186,061	0.89	8.06	5.50	642.68	Diverse	4.90%
▼ AENZAC1 PE**	S/.	1.27	-2.31%	-3.79%	-15.89%	-7.30%	70.00%	44,729	0.97	0.00	-	298.93	Diverse	4.05%
▼ IFS PE**	US\$	33.49	-0.21%	0.54%	0.84%	24.73%	100.00%	23,842	1.17	4.24	7.99	3,866.34	Diverse	7.22%
▲ INRETC1 PE**	US\$	36.40	0.25%	-0.27%	5.51%	4.15%	100.00%	2,042	0.75	3.74	72.56	3,742.19	Diverse	5.28%
▼ LUSURC1 PE**	S/.	16.00	-4.76%	-6.92%	-13.51%	12.36%	75.00%	17,369	0.00	6.03	13.47	2,103.29	Public Services	1.81%
▼ MINSURI1 PE**	S/.	6.15	0.82%	2.50%	21.06%	55.70%	100.00%	183,629	1.02	11.18	2.90	4,786.45	Mining	3.09%
- PML PE**	US\$	0.15	0.00%	-6.25%	15.38%	25.00%	55.00%	4,500	1.14	0.00	-	39.66	Mining	2.12%
▼ SCCO PE**	US\$	74.26	-1.28%	-2.55%	9.45%	20.20%	95.00%	14,895	1.14	4.85	16.35	57,409.43	Industrial	2.12%
▲ SIDERC1 PE**	S/.	1.65	3.77%	4.43%	1.23%	3.12%	95.00%	17,700	0.76	26.82	3.58	311.80	Mining	2.14%
▼ TV PE**	US\$	1.10	-6.78%	-8.33%	10.00%	-15.38%	90.00%	19,019	1.14	0.00	-	108.80	Industrial	1.43%
- UNACEMC1 PE**	S/.	2.31	0.00%	-3.75%	-12.50%	-3.75%	80.00%	98,047	1.07	4.33	-	1,133.78	Mining	2.93%
- VOLCABC1 PE**	S/.	0.92	0.00%	10.84%	29.58%	53.33%	100.00%	714,433	0.93	0.00	26.12	1,925.23	Industrial	3.00%
- BROCALC1 PE**	S/.	8.00	0.00%	0.00%	4.99%	53.85%	80.00%	9,718	0.00	0.00	60.67	321.49	Mining	5.90%
- RIMSEGC1 PE**	S/.	0.86	0.00%	0.00%	0.00%	0.00%	15.00%	1,857	0.00	0.00	16.17	383.49	Finance	3.09%
- CORAREC1 PE**	US\$	2.06	0.00%	0.00%	0.49%	8.42%	25.00%	791	0.00	0.00	3.12	2,285.01	Mining	2.12%
- ENGIEC1 PE**	S/.	6.50	0.00%	0.00%	0.00%	10.92%	35.00%	2,632	0.49	5.97	16.12	1,055.23	Diversas	2.12%
- GBVLAC1 PE**	S/.	2.50	0.00%	0.00%	-1.96%	-8.09%	35.00%	4,163	0.00	0.00	25.98	122.64	Diversas	2.14%

Quantity of shares: 29  
 Source: Bloomberg, Económica  
 \* Bloomberg Industry Classification System  
 \*\* PER is used in the stock market and original currency of the instrument  
 \*Legend: Variation 1D: 1 Day; 5D: 5 Days; 1M: 1 Month; YTD: Var.% 12/31/21 to date

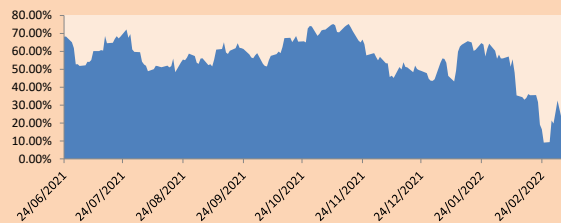
### Sectorial Indices

	Close	1D*	5D*	30D*	YTD*	Beta
▼ S&P/BVLMining	499.83	-0.89%	-2.35%	10.58%	21.44%	1.05
▼ S&P/BVLConsumer	1,160.47	-0.01%	-3.25%	-4.07%	1.09%	0.69
▼ S&P/BVLIndustrials	270.37	0.19%	-0.88%	-5.94%	4.77%	0.71
▲ S&P/BVLFinancials	1,086.99	0.26%	2.73%	3.42%	19.96%	1.19
▼ S&P/BVLConstruction	282.48	-0.26%	-2.43%	-7.97%	-0.32%	0.63
▲ S&P/BVLPublicSvcs	600.84	0.61%	0.00%	3.17%	9.54%	0.18
▲ S&P/BVLElectricUtil	586.57	0.61%	0.00%	3.17%	9.54%	0.18

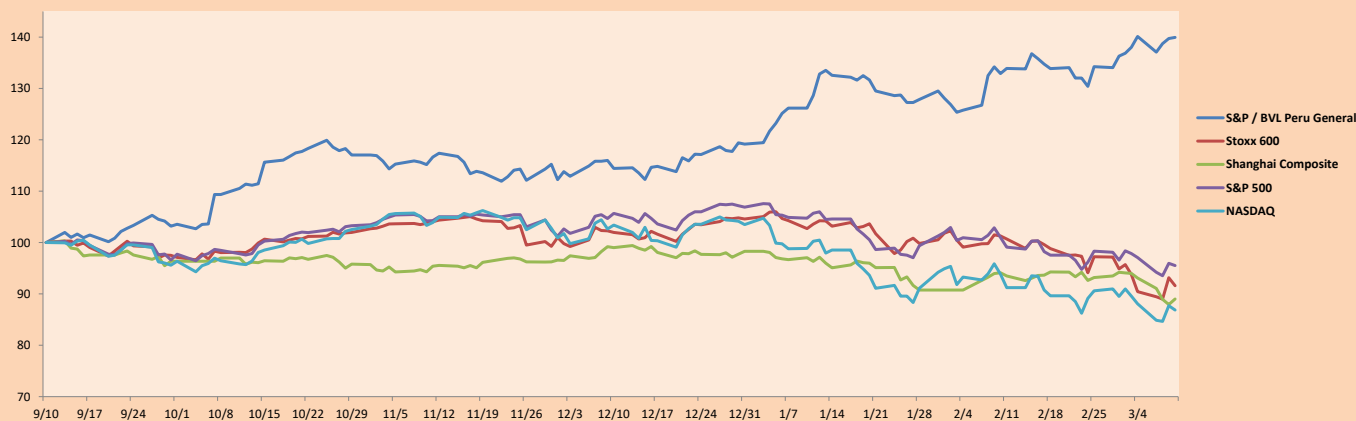
S&P/BVLConstructionTRPEN

\*Legend: Variation 1D: 1 Day; 5D: 5 Days; 1M: 1 Month; YTD: Var.% 12/31/21 to date

Correlation Graph of Returns of Mining Index against Metallic Index of London (3 months)



Indices (6 months)



Base: 10/09/21=100  
 Source: Bloomberg

Capital Market Laboratory Coordinator: MS Javier Penny Pestana  
 Collaboration: Sebastian Ore, Fabrizio Lavalle, Miguel Solimano y Jhonatan Cueva  
 email: pulsobursatil@ulima.edu.pe  
 facebook: www.facebook.com/pulsobursatil.ul

## SOVEREIGN RATING

### RISK RATINGS

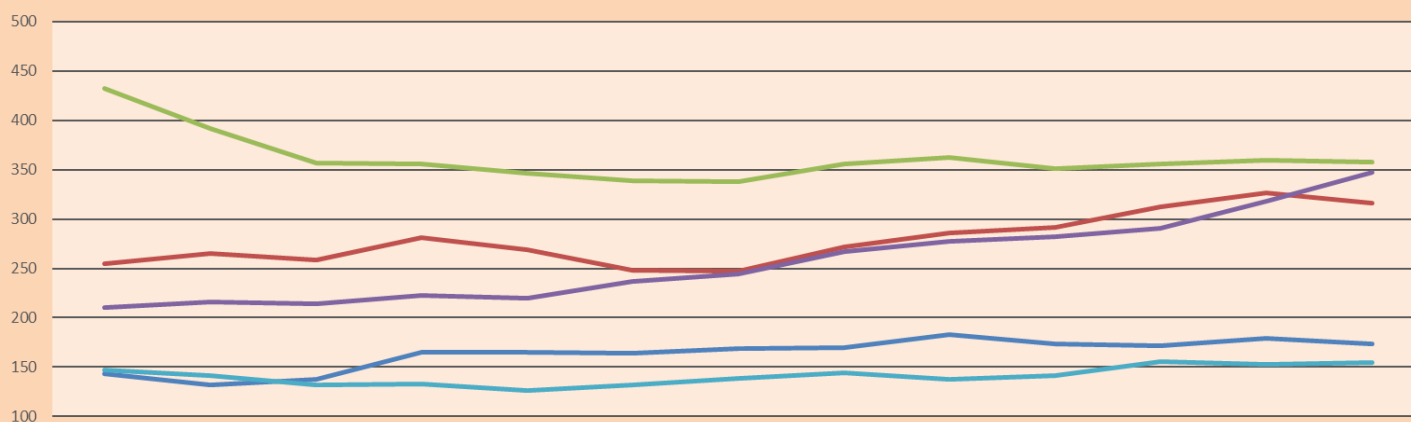
Moody's	S&P	Fitch	
Aaa	AAA	AAA	Prime
Aa1	AA+	AA+	High credit quality
Aa2	AA	AA	
Aa3	AA-	AA-	
A1	A+	A+	Medium-high grade, with low credit risk
A2	A	A	
A3	A-	A-	
Baa1	BBB+	BBB+	Moderate Credit Risk
Baa2	BBB	BBB	
Baa3	BBB-	BBB-	
Ba1	BB+	BB+	It has speculative elements and it is subject to substantial credit risk
Ba2	BB	BB	
Ba3	BB-	BB-	
B1	B+	B+	It is considered speculative and it has high credit risk
B2	B	B	
B3	B-	B-	
Caa1	CCC+		Bad credit conditions and it is subject to high credit risk
Caa2	CCC		
Caa3	CCC-		
Ca	C	CCC	Very close to default or in default
		DD	
C	D	D	

Source: Bloomberg

Latin America Credit Rating			
Clasificadora de riesgo			
Country	Moody's	Fitch	S&P
Peru	Baa1	BBB	BBB+
México	Ba2	BB-	BB-
Venezuela	C	WD	NR
Brazil	Ba2	BB-	BB-
Colombia	Baa2	BB+	BB+
Chile	A1	A-	A
Argentina	Ca	WD	CCC+
Panama	Baa2	BBB-	BBB

Source: Bloomberg

## LATAM Country Risk (bps)



	dic-20	ene-21	feb-21	mar-21	abr-21	may-21	jun-21	jul-21	ago-21	sep-21	oct-21	nov-21	dic-21
Perú	143	132	138	165	165	164	169	170	183	174	172	179	174
Brasil	255	265	259	281	269	248	247	272	286	292	312	327	316
México	432	392	357	356	346	339	338	356	362	351	356	360	358
Colombia	210	216	214	223	220	237	244	267	277	282	291	318	347
Chile	147	141	132	133	126	132	139	144	138	141	156	153	155

Source: BCRP

Capital Market Laboratory Coordinator: MS Javier Penny Pestana  
Collaboration: Sebastian Ore, Fabrizio Lavalle, Miguel Solimano y Jhonatan Cueva  
email: pulsobursatil@ulima.edu.pe  
facebook: www.facebook.com/pulsobursatil.ul