

PULSO BURSÁTIL

FACULTAD DE CIENCIAS EMPRESARIALES Y ECONÓMICAS
CARRERA DE ECONOMÍA
LABORATORIO DE MERCADO DE CAPITALES

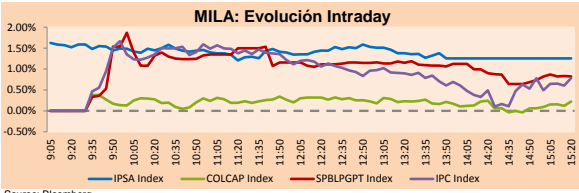


MILA

Lima, March 16, 2022

Main Indexes	Close	1 D	5 D	1 M	YTD	Cap. Burs. (US\$ bill)
▲ IPSA (Chile)	4,695.41	1.57%	0.85%	0.91%	8.98%	103.91
▲ IGPA (Chile)	23,779.44	1.35%	0.63%	1.71%	10.26%	125.54
▲ COLSC (Colombia)	1,063.55	0.39%	0.33%	2.65%	9.29%	7.20
▲ COLCAP (Colombia)	1,528.12	0.39%	-0.61%	1.69%	8.30%	89.45
▲ S&P/BVL (Perú)*	24,581.75	1.16%	-0.70%	2.18%	16.44%	115.51
▲ S&P/BVL SEL (Perú)	640.20	0.90%	-1.25%	2.22%	13.60%	107.18
▲ S&P/BVL LIMA 25	35,335.84	0.83%	-0.22%	2.41%	16.72%	114.13
▲ IPC (México)	53,411.88	0.76%	-0.93%	-0.50%	0.26%	323.87
▲ S&P MILA 40	531.91	1.86%	-1.08%	4.05%	19.57%	6,683.98

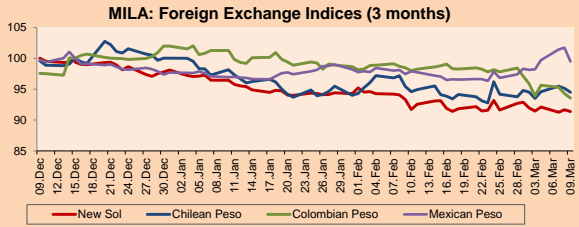
*Legend: Variation 1D: 1 day; 5D: 5 days; 1M: 1 Month; YTD: Var% 12/31/21 to date



Source: Bloomberg

Currency	Price	1D*	5D*	30 D*	YTD*
▼ Sol (PEN)	3,7225	-0.42%	-0.12%	-1.93%	-6.92%
▼ Chilean Peso (CLP)	799.46	-1.43%	-0.67%	-1.74%	-6.17%
▲ Colombian Peso (COP)	3,836.30	0.11%	2.50%	-2.74%	-5.98%
▲ Mexican Peso (MXN)	20.64	-0.90%	-1.29%	1.05%	0.53%

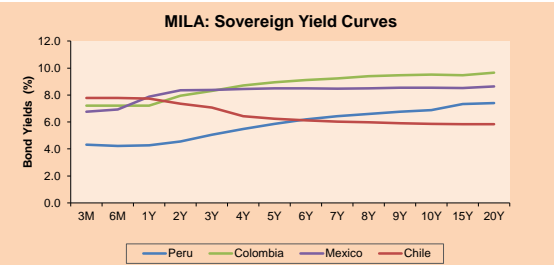
*Legend: Variation 1D: 1 day; 5D: 5 days; 1M: 1 Month; YTD: Var% 12/31/21 to date



Base: 15/12/21=100

Source: Bloomberg

Fixed Income	Currency	Price	Bid Yield (%)	Ask Yield (%)	Duration
PERU 7.35 07/21/25	USD	113.685	3.08	2.94	2.99
PERU 4.125 08/25/27	USD	104.051	3.34	3.27	4.86
PERU 8.75 11/21/33	USD	143.695	4.06	3.98	7.98
PERU 6.55 03/14/37	USD	124.404	4.36	4.28	9.73
PERU 5.625 11/18/2050	USD	122.801	4.26	4.22	15.35
CHILE 2.25 10/30/22	USD	100.538	1.70	1.04	0.61
CHILE 3.125 01/21/26	USD	101.822	2.68	2.57	3.61
CHILE 3.625 10/30/42	USD	90.908	4.34	4.25	14.02
COLOM 11.85 03/09/28	USD	146.006	3.37	3.24	4.66
COLOM 10.375 01/28/33	USD	136.107	5.94	5.74	7.10
COLOM 7.375 09/18/37	USD	111.58	6.23	6.17	9.24
COLOM 6.125 01/18/41	USD	96.781	6.46	6.39	10.87
MEX 4 10/02/23	USD	96.781	6.457	6.385	10.87
MEX5.55 01/45	USD	106.114	5.11	5.07	13.13



Source: Bloomberg

Equity

Largest gains	Exchange	Currency	Price	▲ %
GRUMA SAB-B	Mexico	MXN	263.94	6.41
GRUPO CARSO-A1	Mexico	MXN	69	6.31
ENEL CHILE SA	Chile	CLP	26.00	5.15
FIBRA TERRA	Mexico	MXN	28.41	4.56
GRUPO BIMBO-A	Mexico	MXN	58.67	4.27

Largest losses	Exchange	Currency	Price	▼ %
WALMART DE MEXIC	Mexico	MXN	76.62	-1.90
BUENAVENTURA-ADI	Peru	USD	10	-1.28
GRUPO MEXICO-B	Mexico	MXN	103.34	-1.20
ENTEL	Chile	CLP	3,015	-1.18
MEGACABLE-CPO	Mexico	MXN	58.00	-0.90

Per Turnover

	Exchange	Amount (US\$)
WALMART DE MEXIC	Mexico	114,109,458
GRUPO F BANORT-O	Mexico	92,677,100
AMERICA MOVILL-L	Mexico	75,503,440
GRUPO MEXICO-B	Mexico	45,973,452
SOQUIMICH-B	Chile	37,508,406

Per Volume

	Exchange	Volume
ITAU CORPBANCA	Chile	1,544,593,383
BANCO SANTANDER	Chile	476,825,685
BANCO DE CHILE	Chile	227,672,307
ENEL CHILE SA	Chile	215,260,567
AMERICA MOVILL-L	Mexico	77,694,575

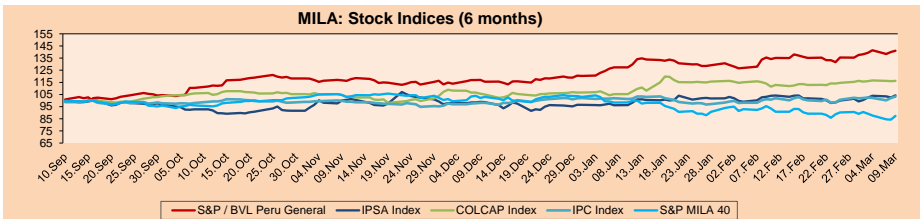
MILA

Peru: The BVL General Index ended today's session with a positive result of +1.16%. The index maintains an annual cumulative positive trend of +16.44% in local currency, while the dollar-adjusted performance amounted to +25.09%. Then, the S&P / BVL Peru SEL varied by +0.90% while the S&P / BVL LIMA 25 by +0.83%. The PEN spot reached S/. 3.7225. Headline: BBVA Research: Peru had accelerated economic growth at the beginning of the year.

Chile: The IPSA index ended the day with a positive return of +1.57%. The most benefited sectors of the day were Information Technology (+3.90%) and Consumer Staples (+3.03%). The best performing stocks were Enel Chile SA (+5.15%) and Sonda SA (+3.90%). Headline: CNC reports that informal online commerce continues to gain strength in Chile with great VAT evasion.

Colombia: The COLCAP index ended the session with a positive return of +0.29%. The most benefited sector of the day was Finance (+0.84%). The best performing stocks were the common (+1.70%) and preferred (-1.35%) shares of BanColombia SA. Headline: Banco de la República analysts indicate that March inflation will be 0.90%.

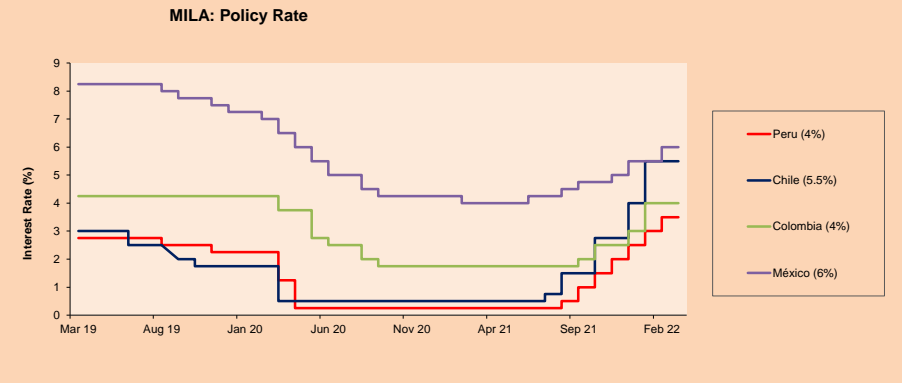
Mexico: The IPC index closed the day in positive territory of +0.76%. The best performing sectors of the day were Communication Services (+1.65%) and Finance (+1.59%). The best performing stocks were Gruma SAB de CV (+6.41%) and Grupo Carso SAB de CV (+6.31%). Headline: Goldman Sachs forecasts economic growth of only 1.4%; Pedro Tello.



Base: 10/09/21=100

Source: Bloomberg

ETFs	Curr.	Close	1D	5D	30 D	YTD	Exchange
▲ iShares MSCI All Peru Caped Index Fund	USD	36.49	2.63%	-0.38%	6.98%	23.19%	NYSE Arca
▲ iShares MSCI All Chile Caped Index Fund	USD	27.49	3.97%	2.35%	5.69%	19.06%	Cboe BZX
▲ Global X MSCI Colombia	USD	11.38	0.04%	-2.65%	6.61%	13.88%	NYSE Arca
▲ iShares MSCI Mexico Capped	USD	50.35	1.86%	1.35%	1.19%	-0.49%	NYSE Arca
▲ iShares MSCI Emerging Markets	USD	44.95	8.05%	1.44%	-7.09%	-7.98%	NYSE Arca
▲ Vanguard FTSE Emerging Markets	USD	46.12	7.78%	1.43%	-6.34%	-6.75%	NYSE Arca
▲ iShares Core MSCI Emerging Markets	USD	55.26	7.49%	1.43%	-6.34%	-7.69%	NYSE Arca
▲ iShares JP Morgan Emerging Markets Bonds	USD	61.33	4.44%	1.36%	-1.98%	-2.37%	Cboe BZX
▲ Morgan Stanley Emerging Markets Domestic	USD	4.79	1.70%	-1.84%	-11.79%	-12.59%	New York



Source: Bloomberg

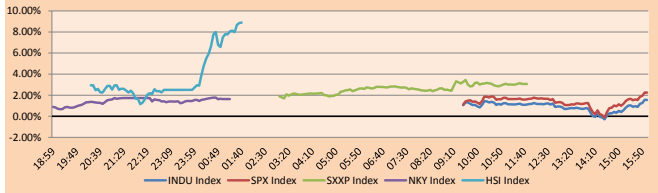
Capital Market Laboratory Coordinator: MS Javier Penny
Collaboration: Sebastian Ore, Fabrizio Lavalle, Miguel Solimano and Jhonatan Cueva
email: pulsobursatil@ulima.edu.pe
facebook: www.facebook.com/pulsobursatil.ul

WORLD

Main Indices	Close	1 D*	5 D*	1 M*	YTD*	Market Cap. (US\$ Mill.)
▲ Dow Jones (USA)	34,063.10	1.55%	2.33%	-2.49%	-6.26%	10,668,863
▲ Standard & Poor's 500 (EEUU)	4,357.86	2.24%	1.87%	-2.62%	-8.57%	37,520,489
▲ NASDAQ Composite (USA)	13,436.55	3.77%	1.37%	-4.87%	-14.12%	21,986,374
▲ Stoxx EUROPE 600 (Europe)	448.45	3.06%	3.22%	-3.47%	-8.07%	11,230,616
▲ DAX (Germany)	14,440.74	3.76%	4.28%	-5.42%	-9.09%	1,390,001
▲ FTSE 100 (United Kingdom)	7,291.68	1.62%	1.40%	-3.26%	-1.28%	1,549,553
▲ CAC 40 (France)	6,588.64	3.68%	3.14%	-5.16%	-7.89%	1,936,043
▲ IBEX 35 (Spain)	8,380.40	1.75%	2.66%	-3.35%	-3.83%	502,921
▲ MSCI AC Asia Pacific Index	172.02	3.89%	0.66%	-9.61%	-10.92%	22,096,077
▲ HANG SENG (Hong Kong)	20,087.50	9.08%	-2.62%	-18.98%	-14.15%	3,366,317
▲ SHANGHAI SE Comp. (China)	3,170.71	3.48%	-2.63%	-8.57%	-12.89%	6,642,815
▲ NIKKEI 225 (Japan)	25,762.01	1.64%	4.23%	-5.40%	-10.52%	3,738,073
▲ S&P / ASX 200 (Australia)	7,175.24	1.10%	1.73%	-0.34%	-2.32%	1,771,764
▲ KOSPI (South Korea)	2,659.23	0.76%	-0.93%	-3.09%	-10.69%	1,631,258

*Legend: Variation 1D: 1 Day; 5D: 5 Days; 1M: 1 Month; YTD: Var.% 12/31/21 to date

Global Markets: Intraday Evolution (var %)

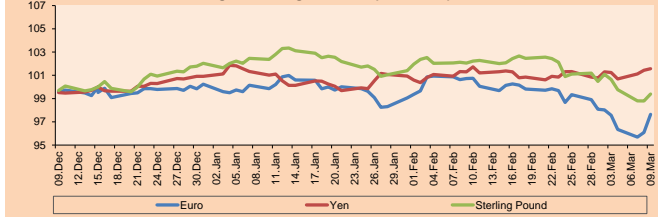


Source: Bloomberg

Currency	Price	1 D*	5 D*	1 M*	YTD*
▲ Euro	1.1035	0.72%	-0.37%	-2.41%	-2.95%
▲ Yen	118.7300	0.36%	2.50%	2.76%	3.17%
▲ Sterling Pound	1.3149	0.82%	-0.24%	-2.80%	-2.83%
▼ Yuan	6.3526	-0.28%	0.55%	-0.07%	-0.06%
▼ Hong Kong Dollar	7.6196	-0.11%	0.00%	0.23%	0.30%
▼ Brazilian Real	5.0781	-1.66%	1.32%	-2.70%	-8.93%
▲ Argentine Peso	109.4150	0.09%	0.67%	2.87%	6.50%

*Legend: Variation 1D: 1 Day; 5D: 5 Days; 1M: 1 Month; YTD: Var.% 12/31/21 to date

Foreign Exchange Indices (3 months)

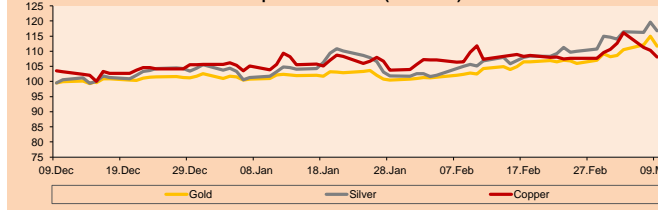


Base: 15/12/21=100
Source: Bloomberg

Commodities	Close	1 D*	5 D*	1 M*	YTD*
▲ Oro (US\$ Oz. T) (LME)	1,927.29	0.49%	-3.24%	3.00%	5.36%
▲ Plata (US\$ Oz. T) (LME)	25.09	0.79%	-2.66%	5.23%	7.64%
- Cobre (US\$ TM) (LME)	9,857.25	0.00%	-1.07%	-1.27%	1.20%
- Zinc (US\$ TM) (LME)	3,781.00	0.00%	-3.45%	5.82%	5.32%
▼ Petróleo WTI (US\$ Barril) (NYM)	95.04	-1.45%	-12.57%	1.65%	27.66%
- Estañó (US\$ TM) (LME)	43,034.00	0.00%	-2.87%	-0.85%	-5.17%
- Plomo (US\$ TM) (LME)	2,217.00	0.00%	-6.74%	-4.09%	-5.17%
▼ Azúcar #11 (US\$ Libra) (NYB-ICE)	18.56	-0.91%	-2.01%	5.10%	-0.22%
▲ Cacao (US\$ TM) (NYB-ICE)	2,532.00	0.40%	-4.92%	-7.29%	-0.82%
▲ Café Arábica (US\$ TM) (NYB-ICE)	217.50	3.01%	-5.15%	-12.26%	-3.76%

*Leyenda: Variación 1D: 1 Día; 5D: 5 Días; 1M: 1 Mes; YTD: Var.% 31/12/21 a la fecha

Principal Metals Index (3 months)



Base: 15/12/21=100
Source: Bloomberg

Equity

Germany (Stocks from DAX Index)

Largest gains	Curr.	Price	▲%	Exchange	Largest losses	Curr.	Price	▼%	Exchange
DMER GY	EUR	41.8	9.86	Xetra	MUV2 GY	EUR	240.95	0.58	Xetra
IFX GY	EUR	30.555	8.16	Xetra	HEN3 GY	EUR	64.86	0.65	Xetra
CON GY	EUR	68.74	7.56	Xetra	ENR GY	EUR	21.32	0.80	Xetra
DBK GY	EUR	11.07	7.21	Xetra	DTE GY	EUR	16.8	1.39	Xetra

Europe (Stocks from STOXX EUROPE 600)

Largest gains	Curr.	Price	▲%	Exchange	Largest losses	Curr.	Price	▼%	Exchange
ADE NO	NOK	99.5	15.78	Oslo	LDO IM	EUR	8.684	-4.86	Borsa Italiana
INPST NA	EUR	5.092	15.65	EN Amsterdam	MAERSK DC	DKK	22240	-4.14	Copenhagen
POLY LN	Gbp	147.85	13.91	Londres	BA/ LN	Gbp	706	-3.60	Londres
ONT LN	Gbp	437.5	12.47	Londres	NG/ LN	Gbp	1119	-3.15	Londres

Global Overview:

United States:

The US market closes with positive returns after a quarter basis point increase by the Federal Reserve; however, a plan to push borrowing costs to more restrictive levels for next year was mentioned, as rising inflation and the war in Ukraine outweighed the risks of the coronavirus pandemic. The DOW JONES index closed in positive territory after Jerome Powell announced at the conference that the U.S. economy has the capacity to cope with tightening policy and that the chances of a recession are not particularly high, which lifted investors' spirits. Meanwhile, the S&P 500 finished higher after confidence was boosted by China's pledge to implement stimulus to the economy to keep markets stable. Finally, the NASDAQ ended with gains as there are signs of progress in the talks between Russia and Ukraine, as President Volodimir Zelenski indicated that the negotiations have become more realistic, while the Russian Foreign Minister indicated that there are hopes of reaching an agreement. This caused technology stocks to soar. Thus, DOW JONES +1.55%; S&P 500 +2.24%; NASDAQ +3.77% ended the day with positive results.

Europe:

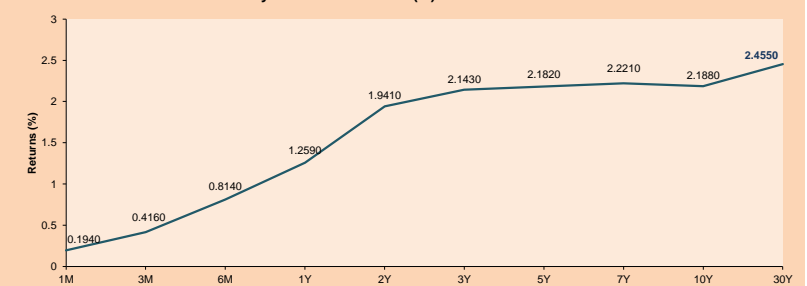
Major European indices ended the session with positive returns. The pan-European STOXX 600 index closed with a +3.06% performance, driven by stocks in the consumer staples (+6.15%) and information technology (+5.16%) sectors. In particular, Prosus NV (+23.88%) was the top gainer on the day as Naspers owns a 29% stake in Tencent Holdings through Prosus and Chinese technology stocks rebounded from the recent sell-off. The FTSE 100 closed with gains of +1.62%, driven by progress in talks between Ukraine and Russia, talks between the Chinese government and SEC authorities and a proposal by Xi Jinping's government to relax market regulations. Regarding the German market, the DAX index closed with +3.76% driven by consumer staples (+5.11%) and industrials (+4.77%) due to better global sentiment on signs of progress in negotiations over the Russian-Ukrainian conflict, whereby Ukraine would become a neutral country and agree to limit its military force. In particular, the top gainers were HelloFresh SE (+12.16%) and Delivery Hero SE (+9.86%). Finally, the French market closed up 3.68%, following the same dynamics as the other European markets, but, mainly driven by luxury stocks and still awaiting the FED interest rate decision. Thus, FTSE 100 +1.62%; CAC 40 +3.68%; DAX +3.76%; STOXX 600 +3.06% ended with positive performances.

Asia:

The main Asian indices closed with positive performances generated by a scenario of greater investor confidence. The Chinese market ended in positive territory, driven by gains in its two main indexes, after the State Council pledged to keep the stock market stable, support the listing of overseas assets and address risks regarding real estate developers. For its part, the Hong Kong market, behaved in the same way but with an important result as talks between US regulators would be advancing in a cooperation plan on ADR's listed in North America thus boosting Meituan(+32.08%) and Alibaba(27.58%). The South Korean market closed with gains as the unemployment rate fell to 2.7% in February and 201,000 service sector jobs were added, however, a rate hike is expected in the coming months. The Australian market closed with positive returns after an OANDA analyst indicated that the FED will refrain from further rate hikes due to the uncertain outlook and the drop in oil prices. Finally, Japan's NIKKEI made gains after easing covid-19 restrictions boosted travel and consumer stocks. Thus, NIKKEI +1.64%; HANG SENG +9.08%; CSI 300 +4.32%; SHANGHAI COMP. +3.48%; S&P/ASX 200 +1.10%; KOSPI +1.44% ended with positive results.

ETFs	Curr.	Close	1D	5D	30 D	YTD	Exchange
SPDR S&P 500 ETF TRUST	USD	435.62	2.22%	1.92%	-0.77%	-8.28%	NYSE Arca
ISHARES MSCI EMERGING MARKET	USD	44.95	8.05%	1.44%	-7.09%	-7.98%	NYSE Arca
ISHARES IBOXX HIGH YLD CORP	USD	81.70	1.40%	-0.62%	-0.99%	-6.91%	NYSE Arca
FINANCIAL SELECT SECTOR SPDR	USD	38.43	2.81%	3.95%	-3.10%	-1.59%	NYSE Arca
VANECK GOLD MINERS ETF	USD	37.01	0.30%	-2.94%	11.85%	15.55%	NYSE Arca
ISHARES RUSSELL 2000 ETF	USD	201.94	3.15%	0.83%	0.63%	-9.22%	NYSE Arca
SPDR GOLD SHARES	USD	180.01	0.63%	-3.13%	3.02%	5.29%	NYSE Arca
ISHARES 20+ YEAR TREASURY BO	USD	132.82	0.98%	-2.64%	-2.72%	-10.37%	NASDAQ GM
INVESCO QQQ TRUST SERIES 1	USD	340.32	3.71%	1.59%	-2.06%	-14.46%	NASDAQ GM
ISHARES BIOTECHNOLOGY ETF	USD	125.97	4.00%	1.38%	-1.34%	-17.46%	NASDAQ GM
ENERGY SELECT SECTOR SPDR	USD	71.49	-0.46%	-4.90%	3.99%	28.81%	NYSE Arca
PROSHARES ULTRA VIX ST FUTUR	USD	17.05	-14.62%	-17.83%	0.71%	37.17%	Cboe BZX
UNITED STATES OIL FUND LP	USD	68.28	-0.51%	-9.53%	2.89%	25.61%	NYSE Arca
ISHARES MSCI BRAZIL ETF	USD	32.94	3.45%	-3.51%	0.52%	17.35%	NYSE Arca
SPDR S&P OIL & GAS EXP & PR	USD	119.14	0.23%	-5.31%	7.07%	24.27%	NYSE Arca
UTILITIES SELECT SECTOR SPDR	USD	71.12	-0.18%	1.31%	7.01%	-0.64%	NYSE Arca
ISHARES US REAL ESTATE ETF	USD	104.11	1.25%	0.63%	1.99%	-10.36%	NYSE Arca
SPDR S&P BIOTECH ETF	USD	86.19	4.78%	-2.54%	-6.12%	-23.02%	NYSE Arca
ISHARES IBOXX INVESTMENT GRA	USD	120.39	0.85%	-1.01%	-2.70%	-9.15%	NYSE Arca
ISHARES JP MORGAN USD EMERGI	USD	97.33	2.04%	1.80%	-5.27%	-10.76%	NASDAQ GM
REAL ESTATE SELECT SECT SPDR	USD	46.46	1.11%	0.63%	3.41%	-10.33%	NYSE Arca
ISHARES CHINA LARGE-CAP ETF	USD	32.82	21.24%	3.24%	-11.99%	-10.28%	NYSE Arca
CONSUMER STAPLES SPDR	USD	73.51	0.11%	0.74%	-2.04%	-4.67%	NYSE Arca
VANECK JUNIOR GOLD MINERS	USD	46.11	0.65%	-3.05%	9.89%	9.97%	NYSE Arca
SPDR BLOOMBERG HIGH YIELD BO	USD	101.67	1.44%	-0.64%	-1.30%	-6.36%	NYSE Arca
VANGUARD REAL ESTATE ETF	USD	104.78	1.19%	0.52%	2.39%	-9.68%	NYSE Arca
GRAYSCALE BITCOIN TRUST BTC	USD	27.50	4.40%	-2.14%	-6.62%	-19.71%	OTC US

USA Treasury Bonds Yield Curve (%)



Source: Bloomberg

LIMA

Stocks

Ticker	Currency	Price	1D*	5D*	30D*	YTD*	Frequency	Volume (US\$)	Beta	Dividend Yield (%)	Price Earning	Market Cap. (M US\$)	Economic Sector*	Index Weight
▲ ALICORC1 PE**	S/.	5.83	0.39%	0.33%	2.65%	9.29%	100.00%	5,030,976	0.79	14.32	13.94	1,335.37	Industrial	3.53%
▲ ATACOCB1 PE**	S/.	0.13	0.00%	-7.14%	0.00%	8.33%	25.00%	11,774	1.00	0.00	-	31.73	Mining	1.02%
- BACKUS11 PE**	S/.	23.10	0.00%	0.00%	-5.71%	12.68%	85.00%	1,117	0.78	0.00	8.07	8,292.83	Industrial	0.82%
▲ BAP PE**	US\$	167.55	3.49%	3.08%	8.80%	35.36%	100.00%	1,394,939	1.32	0.73	-	15,813.76	Diverse	5.82%
▼ BVN PE**	US\$	10.02	-1.28%	-4.57%	10.11%	37.26%	95.00%	343,684	1.29	0.00	-	2,757.12	Mining	5.88%
- CASAGRC1 PE**	S/.	10.00	0.00%	9.89%	7.18%	9.89%	90.00%	3,089	0.77	54.02	6.03	226.28	Agricultural	1.31%
▲ BVVAC1 PE**	S/.	2.23	2.29%	3.72%	11.50%	23.20%	100.00%	154,696	0.81	2.04	9.72	4,048.73	Finance	2.85%
▼ CORARE11 PE**	S/.	1.83	-1.61%	-0.54%	0.55%	6.40%	95.00%	59,564	0.76	15.06	2.77	610.90	Industrial	1.72%
- CPACASC1 PE**	S/.	4.75	0.00%	-1.66%	-4.04%	-4.04%	100.00%	33,012	0.62	16.63	13.19	592.26	Industrial	2.38%
▲ CVERDEC1 PE**	US\$	46.49	1.95%	-0.02%	-0.02%	24.87%	95.00%	424,428	1.06	4.30	13.66	16,274.10	Mining	5.25%
▲ ENGEPEC1 PE**	S/.	2.23	0.90%	3.24%	9.31%	7.73%	85.00%	94,189	0.73	13.94	8.92	1,435.09	Public Services	1.44%
- ENDISPC1**	S/.	4.45	0.00%	1.14%	2.30%	11.25%	50.00%	103	0.85	0.00	8.62	763.36	Public Services	0.98%
▲ FERREYC1 PE**	S/.	2.41	0.42%	0.42%	-0.41%	17.56%	100.00%	915,910	0.89	8.16	5.43	631.67	Diverse	4.90%
- AENZAC1 PE**	S/.	1.25	0.00%	-3.85%	-5.30%	-8.76%	75.00%	24,224	0.97	0.00	-	292.79	Diverse	4.05%
▲ IFS PE**	US\$	33.00	1.01%	-0.81%	2.07%	22.91%	100.00%	42,281	1.17	4.30	7.91	3,808.79	Diverse	7.22%
▲ INRETC1 PE**	US\$	37.00	1.37%	-0.67%	7.25%	5.87%	100.00%	76,405	0.74	3.68	74.10	3,803.87	Diverse	5.28%
- LUSURC1 PE**	S/.	16.50	0.00%	-1.79%	-4.18%	15.87%	70.00%	9,137	0.40	0.00	13.89	2,158.41	Public Services	1.81%
- MINSUR11 PE**	S/.	6.00	0.00%	-0.83%	21.21%	51.90%	100.00%	3,343,729	1.02	11.46	2.82	4,646.88	Mining	3.09%
▲ PML PE**	US\$	0.16	14.29%	14.29%	14.29%	33.33%	50.00%	4,034	1.04	0.00	-	40.98	Mining	2.12%
▲ SCCO PE**	US\$	70.01	2.14%	-6.96%	8.04%	13.32%	95.00%	266,284	1.16	5.14	15.41	54,123.81	Mining	2.14%
▲ SIDERC1 PE**	S/.	1.60	0.63%	2.56%	-1.23%	0.00%	95.00%	37,409	0.82	27.66	3.47	300.87	Industrial	1.43%
▼ TV PE**	US\$	1.02	-0.97%	-12.82%	2.00%	-21.54%	90.00%	17,730	1.13	0.00	-	100.89	Mining	2.93%
▼ UNACEM1 PE**	S/.	2.23	-0.45%	-3.04%	-14.23%	-7.08%	80.00%	177,192	0.61	4.48	9.33	1,089.17	Industrial	3.00%
▲ VOLCABC1 PE**	S/.	0.90	1.12%	2.27%	30.43%	50.00%	100.00%	204,793	0.88	0.00	25.43	1,902.69	Mining	5.90%
- NEXAPEC1 PE**	S/.	3.60	0.00%	-6.49%	2.86%	1.12%	45.00%	4,835	1.08	0.00	9.04	1,229.71	Mining	1.56%

Quantity of shares: 25
 Source: Bloomberg, Económica
 * Bloomberg Industry Classification System
 ** PER is used in the stock market and original currency of the instrument
 *Legend: Variation 1D: 1 Day; 5D: 5 Days; 1M: 1 Month; YTD: Var.% 12/31/21 to date

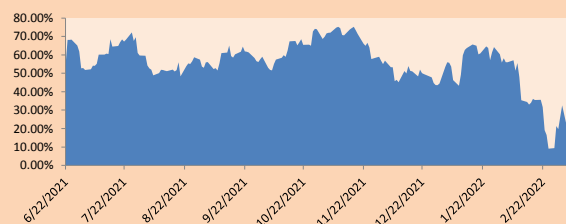
Sectorial Indices

	Close	1D*	5D*	30D*	YTD*	Beta
▲ S&P/BVLMining	474.04	0.82%	-5.16%	7.01%	15.17%	1.06
▲ S&P/BVLConsumer	1,175.23	1.35%	-0.17%	-2.60%	2.37%	0.61
▼ S&P/BVLIndustrials	265.36	-0.06%	-1.35%	-5.68%	2.82%	0.51
▲ S&P/BVLFinancials	1,127.50	2.76%	2.53%	5.90%	24.43%	1.40
▼ S&P/BVLConstruction	276.49	-0.26%	-2.09%	-7.79%	-2.43%	0.40
▲ S&P/BVLPublicSvcs	603.30	0.27%	1.16%	2.45%	9.99%	0.14
▲ S&P/BVLElectricUtil	588.97	0.27%	1.16%	2.44%	9.99%	0.14

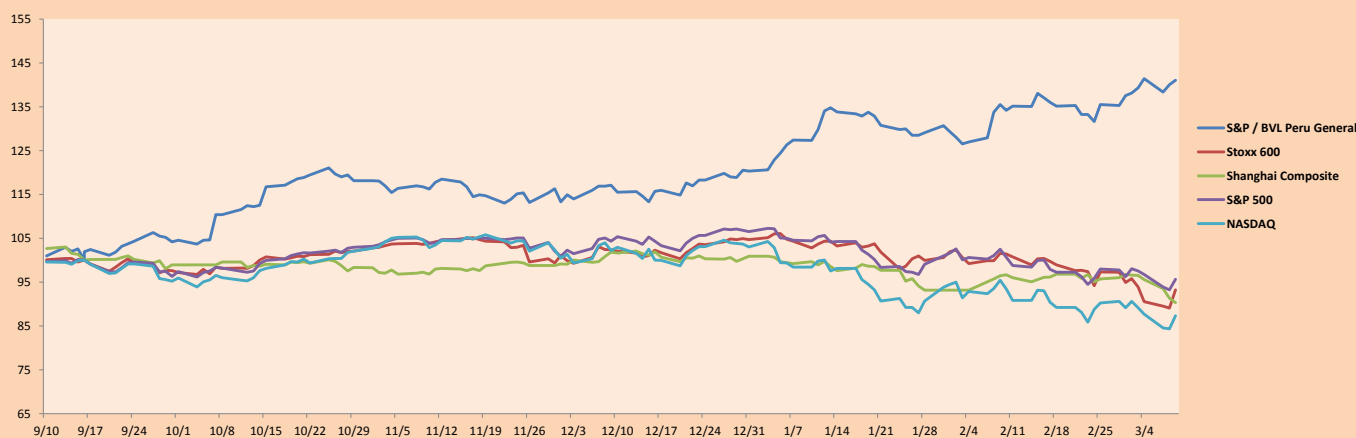
S&P/BVLConstructionTRPEN

*Legend: Variation 1D: 1 Day; 5D: 5 Days; 1M: 1 Month; YTD: Var.% 12/31/21 to date

Correlation Graph of Returns of Mining Index against Metallic Index of London (3 months)



Indices (6 months)



Base: 16/09/21=100
 Source: Bloomberg

Capital Market Laboratory Coordinator: MS Javier Penny
 Collaboration: Sebastian Ore, Fabrizio Lavallo, Miguel Solimano and Jhonatan Cueva
 email: pulsobursatil@ullima.edu.pe
 facebook: www.facebook.com/pulsobursatil.ull

SOVEREIGN RATING

RISK RATINGS

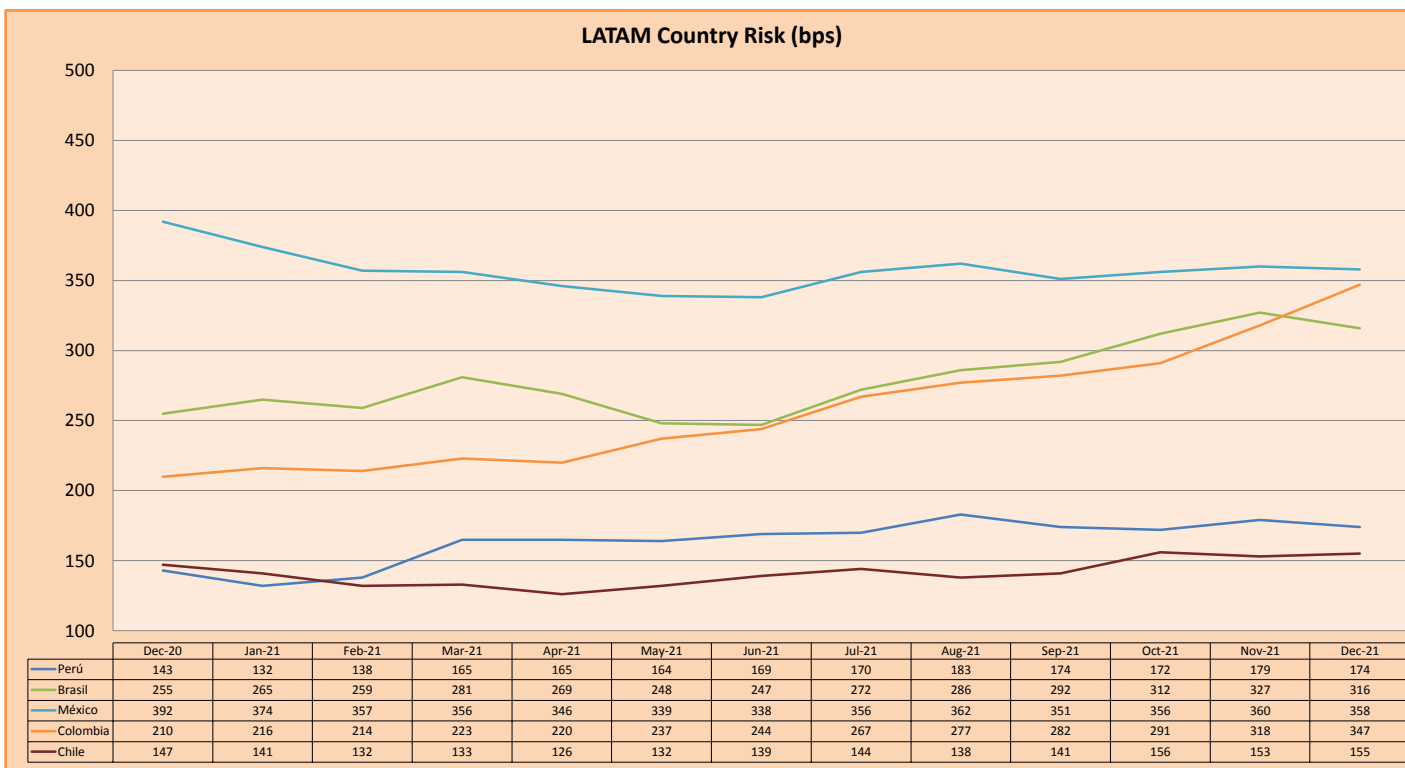
Moody's	S&P	Fitch	
Aaa	AAA	AAA	Prime
Aa1	AA+	AA+	High credit quality
Aa2	AA	AA	
Aa3	AA-	AA-	
A1	A+	A+	Medium-high grade, with low credit risk
A2	A	A	
A3	A-	A-	
Baa1	BBB+	BBB+	Moderate Credit Risk
Baa2	BBB	BBB	
Baa3	BBB-	BBB-	
Ba1	BB+	BB+	It has speculative elements and it is subject to substantial credit risk
Ba2	BB	BB	
Ba3	BB-	BB-	
B1	B+	B+	It is considered speculative and it has high credit risk
B2	B	B	
B3	B-	B-	
Caa1	CCC+		Bad credit conditions and it is subject to high credit risk
Caa2	CCC		
Caa3	CCC-		
Ca	CC	CCC	Very close to default or in default
	C		
C	D	DDD	

Source: Bloomberg

Latin America Credit Rating			
Clasificadora de riesgo			
Country	Moody's	Fitch	S&P
Peru	Baa1	BBB	BBB+
México	Ba2	BB-	BB-
Venezuela	C	WD	NR
Brazil	Ba2	BB-	BB-
Colombia	Baa2	BB+	BB+
Chile	A1	A-	A
Argentine	Ca	WD	CCC+
Panama	Baa2	BBB-	BBB

Source: Bloomberg

LATAM Country Risk (bps)



Source: BCRP

Capital Market Laboratory Coordinator: MS Javier Penny
Collaboration: Sebastian Ore, Fabrizio Lavalle, Miguel Solimano and Jhonatan Cueva
email: pulsobursatil@ulima.edu.pe
facebook: www.facebook.com/pulsobursatil.ul