

# PULSO BURSÁTIL

FACULTAD DE CIENCIAS EMPRESARIALES Y ECONÓMICAS  
CARRERA DE ECONOMÍA  
LABORATORIO DE MERCADO DE CAPITALES

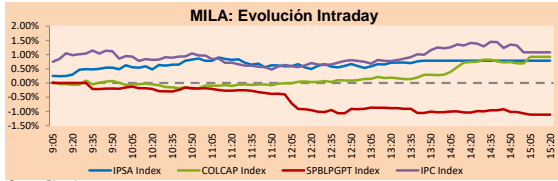


## MILA

Lima, March 31, 2022

Main Indexes	Close	1 D	5 D	1 M	YTD	Cap. Burs. (US\$ bill)
▲ IPSA (Chile)	4,936.97	0.86%	-0.35%	11.69%	14.98%	115.78
▲ IGPA (Chile)	25,218.10	0.80%	0.00%	13.00%	17.27%	132.42
▲ COLCAP (Colombia)	1,031.07	0.03%	-1.89%	-1.57%	5.95%	7.21
▲ COLCAP (Colombia)	1,616.08	0.92%	1.42%	5.35%	14.88%	94.30
▼ S&P/BVL (Perú)*	24,915.50	-1.12%	-1.77%	3.42%	18.29%	123.40
▼ S&P/BVL SEL (Perú)	647.52	-1.07%	-1.86%	1.62%	15.47%	111.54
▼ S&P/BVL LIMA 25	35,593.24	-0.87%	-0.41%	2.69%	17.81%	122.55
▲ IPC (México)	56,536.68	1.29%	1.27%	6.73%	6.52%	359.09
▲ S&P MILA 40	569.14	0.49%	0.79%	11.53%	27.94%	7,135.11

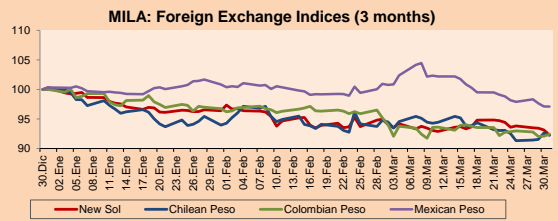
\*Legend: Variation 1D: 1 day; 5D: 5 days; 1M: 1 Month; YTD: Var% 12/31/21 to date



Source: Bloomberg

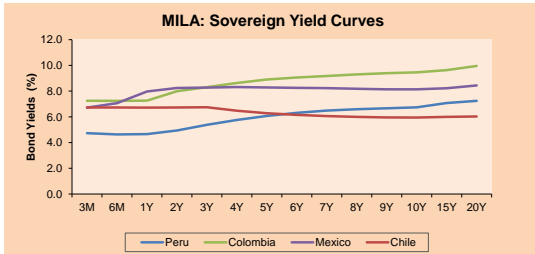
Currency	Price	1D*	5D*	30 D*	YTD*
▼ Sol (PEN)	3,680.03	-0.93%	-1.43%	-2.84%	-7.97%
▼ Chilean Peso (CLP)	786.05	-0.38%	-0.29%	-2.65%	-7.74%
▼ Colombian Peso (COP)	3,771.05	0.36%	-0.45%	-2.91%	-7.58%
▼ Mexican Peso (MXN)	19.87	-0.03%	-1.10%	-3.81%	-3.21%

\*Legend: Variation 1D: 1 day; 5D: 5 days; 1M: 1 Month; YTD: Var% 12/31/21 to date



Base: 30/12/21=100  
Source: Bloomberg

Fixed Income	Currency	Price	Bid Yield (%)	Ask Yield (%)	Duration
PERU 7.35 07/21/25	USD	113.478	3.10	2.95	2.94
PERU 4.125 08/25/27	USD	104.16	3.33	3.22	4.81
PERU 8.75 11/21/33	USD	145.455	3.90	3.82	7.94
PERU 6.55 03/14/37	USD	126.89	4.16	4.09	9.71
PERU 5.625 11/18/2050	USD	126.708	4.06	4.03	15.49
CHILE 2.25 10/30/22	USD	100.364	2.01	1.20	0.56
CHILE 3.125 01/21/26	USD	100.854	2.95	2.82	3.55
CHILE 3.625 03/30/42	USD	93.536	4.13	4.05	14.04
COLOM 11.85 03/09/28	USD	146.721	3.26	3.04	4.61
COLOM 10.375 01/28/33	USD	135.734	5.96	5.77	7.05
COLOM 7.375 09/18/37	USD	112.958	6.11	6.03	9.55
COLOM 6.125 01/18/41	USD	97.366	6.40	6.33	10.87
MEX 4 10/02/23	USD	97.366	6.402	6.331	10.87
MEX5.55 01/45	USD	109.617	4.88	4.82	13.23



Source: Bloomberg

## Equity

Largest gains	Exchange	Currency	Price	▲%
ARCA CONTINENTAL	Mexico	MXN	135.25	4.59
AERO DEL PACIF-B	Mexico	MXN	322.61	3.38
AERO DEL SURE-B	Mexico	MXN	443.93	3.38
BANCO DE CHILE	Chile	CLP	84.24	3.36
COCA-COLA FEMSA	Mexico	MXN	109.53	3.34

Per Turnover	Exchange	Amount (US\$)
WALMART DE MEXIC	Mexico	120,708,962
AMERICA MOVIL-L	Mexico	64,532,886
GRUPO MEXICO-B	Mexico	60,815,304
GRUPO F BANORT-O	Mexico	59,934,071
SOQUIMICH-B	Chile	40,580,955

Largest losses	Exchange	Currency	Price	▼%
ENEL CHILE SA	Chile	CLP	23.5	-2.85
FERREYCORP SAA	Peru	PEN	2.53	-2.32
GRUPO NUTRESA SA	Colombia	COP	45800	-1.51
ALICORP-C	Peru	PEN	5.55	-1.42
PARQUE ARAUCO	Chile	CLP	824	-1.32

Per Volume	Exchange	Volume
ITAU CORPBANCA	Chile	1,219,526,873
BANCO SANTANDER	Chile	198,399,999
ENEL CHILE SA	Chile	123,305,282
BANCO DE CHILE	Chile	90,917,196
AMERICA MOVIL-L	Mexico	60,777,467

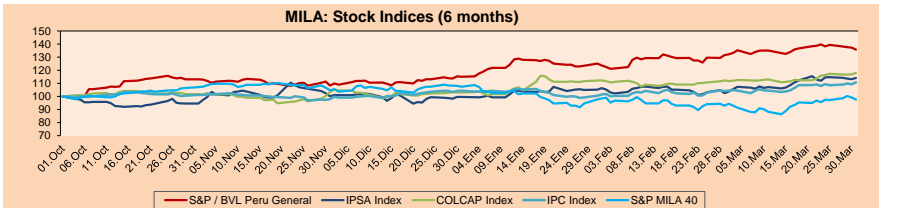
## MILA

Peru: The BVL General Index ended today's session with a negative result of -1.12%. The index maintains a positive annual cumulative trend of +18.02% in local currency, while the dollar-adjusted performance amounted to +28.24%. Then, the S&P/BVL Peru SEL varied by -1.07% while the S&P/BVL LIMA 25 by -0.87%. The spot PEN reached S/ 3.6804. Headline: Energy crisis fuels Peru's desire to reactivate an oil field in the Amazon.

Chile: The IPSA index ended the day with a positive return of +0.86%. The most benefited sectors of the day were Finance (+1.77%) and Materials (+1.44%). The best performing stocks were Empresas Banco de Chile (+3.36%) and Engie Energía Chile SA (+3.01%). Headline: Visa ups the ante in means of payment and processes its transactions with its own network in Chile.

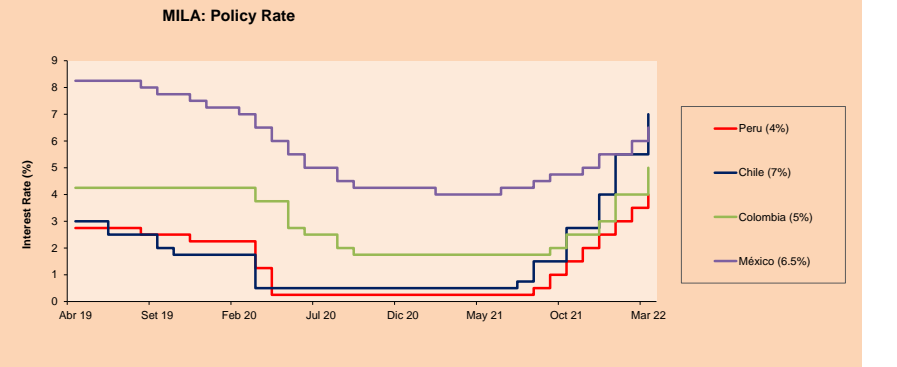
Colombia: The COLCAP index ended the session with a positive return of +0.92%. The sectors that benefited the most during the day were Consumer Staples (+2.45%) and Financials (+1.77%). The best performing stocks were BanColombia SA (+3.78%) and Organización Terpel SA (+2.45%). Headline: The Central Bank increased interest rates to 5%.

Mexico: The IPC index closed the day in positive territory at +1.29%. The best performing sectors of the day were Industrials (+2.64%) and Materials (+2.08%). The best performing stocks were Arca Continental SAB de CV (+4.59%) and Controladora Vuela Cia de Avia (+3.74%). Headline: El Mercurio Inv: Mexican Banking adopts UN commitment for sustainable finance



Base: 04/10/21=100  
Source: Bloomberg

ETFs	Curr.	Close	1D	5D	30 D	YTD	Exchange
▲ iShares MSCI All Peru Caped Index Fund	USD	37.2	0.16%	-0.08%	6.77%	25.59%	NYSE Arca
▲ iShares MSCI All Chile Caped Index Fund	USD	29.07	1.11%	-0.62%	15.54%	25.90%	Cboe BZX
▲ Global X MSCI Colombia	USD	12.3735	0.54%	0.91%	11.47%	23.82%	NYSE Arca
▲ iShares MSCI Mexico Capped	USD	54.97	0.77%	2.54%	10.54%	8.64%	NYSE Arca
▼ iShares MSCI Emerging Markets	USD	45.15	-1.51%	-0.57%	-2.08%	-7.57%	NYSE Arca
▼ Vanguard FTSE Emerging Markets	USD	46.13	-1.62%	-0.69%	-2.20%	-6.73%	NYSE Arca
▼ iShares Core MSCI Emergoina Markets	USD	55.55	-1.51%	-0.61%	-1.52%	-7.20%	NYSE Arca
▼ iShares JP Morgan Emerging Markets Bonds	USD	61.03	-0.88%	-0.11%	-1.47%	-2.85%	Cboe BZX
▲ Morgan Stanley Emerging Markets Domestic	USD	4.99	1.22%	2.67%	-2.54%	-8.94%	New York



Source: Bloomberg

Capital Market Laboratory Coordinator: MS Javier Penny Pestana  
Collaboration: Sebastian Ore, Fabrizio Lavalle, Miguel Solimano y Jhonatan Cueva  
email: pulsobursatil@ulima.edu.pe  
facebook: www.facebook.com/pulsobursatil

The content of this document is just for informational purposes. The information and opinions expressed should not be considered as recommendations for future decisions. Under any circumstances, the Capital Market Laboratory of University of Lima will be responsible for the use of the statements in this document.

WORLD

Main Indices	Close	1 D*	5 D*	1 M*	YTD*	Market Cap. (US\$ Mill.)
▼ Dow Jones (USA)	34,678.35	-1.56%	-0.09%	4.25%	-4.48%	11,305,709
▼ Standard & Poor's 500 (EELU)	4,530.41	-1.57%	0.23%	5.32%	-4.85%	39,902,850
▼ NASDAQ Composite (USA)	14,220.52	-1.54%	0.20%	5.25%	-8.06%	24,166,667
▼ Stoxx EUROPE 600 (Europe)	455.86	-0.94%	0.62%	3.57%	-6.07%	11,426,987
▼ DAX (Germany)	14,414.75	-1.31%	0.99%	3.96%	-9.00%	1,382,113
▼ FTSE 100 (United Kingdom)	7,515.68	-0.83%	0.65%	2.92%	2.16%	1,600,626
▼ CAC 40 (France)	6,659.87	-1.21%	1.59%	4.57%	-6.49%	1,956,972
▼ IBEX 35 (Spain)	8,445.10	-1.23%	1.69%	4.04%	-2.24%	505,783
▼ MSCI AC Asia Pacific Index	180.45	-0.66%	-0.13%	-1.58%	-6.56%	23,900,279
▼ HANG SENG (Hona Kong)	21,996.85	-1.06%	0.23%	0.61%	-5.80%	3,687,486
▼ SHANGHAI SE Comp. (China)	3,252.20	-0.44%	0.06%	-4.78%	-9.81%	6,902,439
▼ NIKKEI 225 (Japan)	27,821.43	-0.73%	-1.03%	6.47%	-3.91%	3,850,772
▼ S&P / ASX 200 (Australia)	7,499.59	-0.20%	1.52%	5.39%	0.66%	1,895,431
▲ KOSPI (South Korea)	2,757.65	0.40%	1.03%	0.97%	-7.99%	1,709,385

\*Legend: Variation 1D: 1 Day; 5D: 5 Days; 1M: 1 Month; YTD: Var. % 12/31/21 to date

Equity

Germany (Stocks from DAX Index)

Largest gains	Curr.	Price	▲%	Exchange	Largest losses	Curr.	Price	▼%	Exchange
FME GY	EUR	60.76	1.27	Xetra	DHER GY	EUR	39.86	-6.59	Xetra
MTX GY	EUR	210.7	0.72	Xetra	HEI GY	EUR	51.66	-3.33	Xetra
ENR GY	EUR	20.72	0.68	Xetra	CON GY	EUR	65.4	-3.00	Xetra
BAYN GY	EUR	62.1	0.37	Xetra	BAS GY	EUR	51.76	-2.87	Xetra

Europe (Stocks from STOXX EUROPE 600)

Largest gains	Curr.	Price	▲%	Exchange	Largest losses	Curr.	Price	▼%	Exchange
NESTE FH	EUR	41.48	3.34	Helsinki	HMB SS	SEK	126.18	-12.91	Stockholm
ORSTED DC	DKK	849.2	3.31	Copenhagen	SINCH SS	SEK	64.46	-12.80	Stockholm
G IM	EUR	20.77	3.23	Borsa Italiana	SWEDA SS	SEK	141	-11.74	Stockholm
BPT LN	Gbp	351.5	2.93	London	HFG GY	EUR	40.96	-8.26	Xetra

Global Overview:

United States:

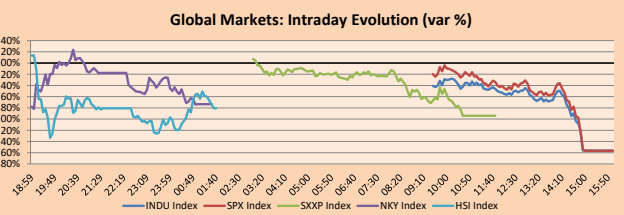
The US market closes with negative performances. The DOW JONES index closed lower with a -1.56% performance, due to a weak performance of stocks related to the communication services sector (-2.32%) and non-core consumer products (-2.13%). The worst performers in this index were Walgreens Boots Alliance Inc (-5.67%) and Intel Corp (-3.64%) as it has kept its annual projections unchanged despite having higher earnings than expected by Wall Street, which means that it expects more moderate results for the rest of the year. As for Intel Corp, the losses are due to the fact that analysts expect positive returns from the new GPUs but not significant with respect to the competition, as well as an adverse reaction from investors to Intel's purchase of an Israeli company. Meanwhile, the S&P500 index ended with a -1.57% return on expectations of further monetary policy tightening due to inflationary pressures derived from the global context and the Russian-Ukrainian war. Also, the cost of mortgage loans in the US has reached levels not seen since December 2018, according to reports from Freddie Mac. Finally, the NASDAQ index returned -1.54%; driven by a drop in inflation-adjusted spending, i.e., lower spending suggests that the speed at which prices are rising is disincentivizing demand. Thus, DOW JONES -1.56%; S&P 500 -1.57%; NASDAQ -1.54% ended the day with negative results.

Europe:

The main European indices ended the session with negative performances. The pan-European STOXX 600 index ended the session in negative territory caused by the shares of the Consumer Staples (-2.19%) and Information Technology (-1.3%) sectors. On the other hand, the consumer confidence indicator in the Eurozone came in at -18.7 for March, representing the lowest level since May and driven by low expectations of an improvement in the economic and financial situation. The FTSE 100 maintained the trend due to the fall in crude oil prices since the White House announced the release of 180 million barrels of oil, as well as a contraction in Chinese manufacturing activity. Also, housing prices rose faster than expected. Regarding the German market, the DAX index closed with losses, weighed down by the non-core consumer goods and products sector, as retail sales fell by almost 2% for February, which was lower than the market forecast. Finally, the French market ended with a negative performance as inflation reached its highest level since 1985 and accelerated to 4.5%. On the corporate front, Worldline (-6.65%) was the worst performer as Apple is developing technology and infrastructure that would compete directly with the company's payment system provider. Thus, FTSE 100 -0.83%; CAC 40 -1.21%; DAX -1.31%; STOXX 600 -0.94% ended with negative results.

Asia:

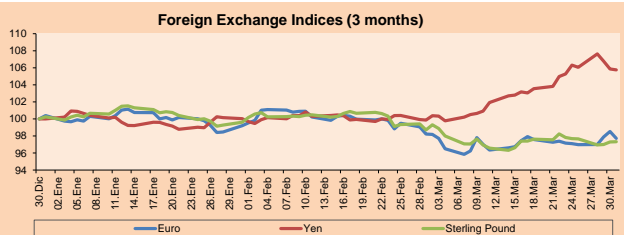
The main Asian indexes closed with negative performances, in a context where Russian attacks persist while peace talks are underway and Biden is expected to tap the oil reserve, hoping to reduce gasoline prices. The Chinese market closed lower in the face of prospects of a slowdown as authorities restrict production and mobility in cities such as Shanghai and Shenzhen to end a wave of COVID-19 outbreaks. The Hang Seng index ended lower as a contraction in China's manufacturing sector heightened concerns about a further slowdown in growth, and the risk of Chinese companies being banned from U.S. stock exchanges for allegedly failing to comply with the law. The South Korean market closed in positive territory as the Biden administration is expected to consider releasing 1 million barrels of oil per day from the strategic reserve for about six months. Japan's NIKKEI closed negative on aggressive selling triggered by increased uncertainty as peace talks between Russia and Ukraine fail to make significant progress. The Australian market fell this session as hopes for a diplomatic solution to the conflict in Ukraine diminished on news of Moscow's shelling of the outskirts of Kiev. Thus, NIKKEI -0.73%; HANG SENG -1.06%; CSI 300 -0.59%; S&P/ASX 200 -0.74%; KOSPI +0.40%; SHANGAI COMPOSITE -0.44% ended with negative performances.



Source: Bloomberg

Currency	Price	1 D*	5 D*	1 M*	YTD*
▼ Euro	1.1067	-0.82%	0.64%	-0.52%	-2.66%
▼ Yen	121.7000	-0.11%	-0.53%	5.30%	-5.75%
▲ Sterling Pound	1.3138	0.03%	-0.37%	-1.40%	-2.91%
▼ Yuan	6.3400	-0.12%	-0.44%	0.45%	-0.25%
▲ Hong Kong Dollar	7.8326	0.07%	0.12%	0.26%	0.46%
▼ Brazilian Real	4.7417	-0.62%	-1.78%	-7.97%	-14.96%
▼ Argentine Peso	111.0050	0.11%	0.76%	3.32%	8.05%

\*Legend: Variation 1D: 1 Day; 5D: 5 Days; 1M: 1 Month; YTD: Var. % 12/31/21 to date

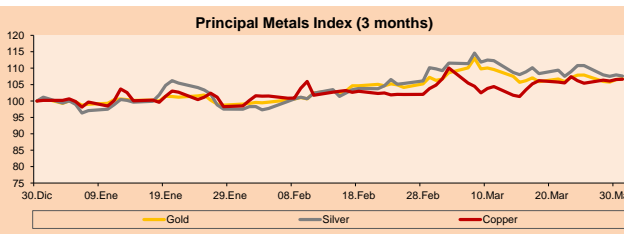


Base: 30/12/21=100

Source: Bloomberg

Commodities	Close	1 D*	5 D*	1 M*	YTD*
▲ Oro (US\$ Oz. T) (LME)	1,937.44	0.24%	-1.03%	-0.40%	5.92%
▼ Plata (US\$ Oz. T) (LME)	24.79	-0.32%	-2.90%	-2.30%	6.37%
▲ Cobre (US\$ TM) (LME)	10,367.51	0.07%	0.39%	2.73%	6.44%
▲ Zinc (US\$ TM) (LME)	4,232.50	1.50%	4.51%	12.37%	17.90%
▼ Petróleo WTI (US\$ Barril) (NYM)	100.28	-6.99%	-10.74%	0.07%	35.62%
▲ Estiércol (US\$ TM) (LME)	43,860.00	0.89%	1.99%	-4.72%	11.40%
▼ Plomo (US\$ TM) (LME)	2,420.50	-0.16%	4.60%	0.38%	3.54%
▼ Azúcar #11 (US\$ Ltral) (NYB-ICE)	19.48	0.10%	1.19%	6.27%	4.78%
▼ Cacao (US\$ TM) (NYB-ICE)	2,650.00	-0.04%	2.59%	5.12%	3.80%
▲ Café Arábica (US\$ TM) (NYB-ICE)	226.40	2.05%	2.05%	-4.07%	0.18%

\*Legend: Variación 1D: 1 Día; 5D: 5 Días; 1M: 1 Mes; YTD: Var. % 31/12/21 a la fecha

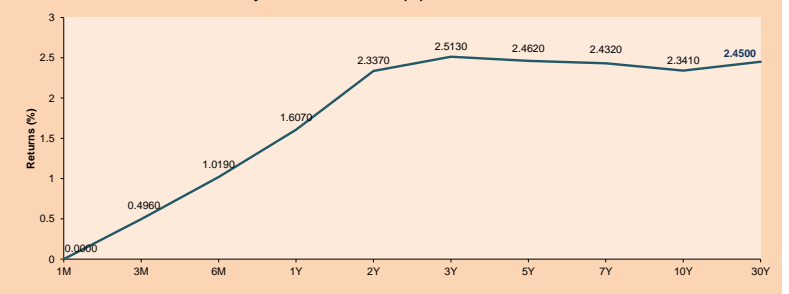


Base: 30/12/21=100

Source: Bloomberg

ETFs	Curr.	Close	1D	5D	30 D	YTD	Exchange
SPDR S&P 500 ETF TRUST	USD	451.64	-1.54%	0.26%	5.04%	-4.91%	NYSE Arca
ISHARES MSCI EMERGING MARKET	USD	45.15	-1.51%	-0.57%	-2.08%	-7.57%	NYSE Arca
ISHARES IBOXG HIGH YLD CORP	USD	82.29	-0.36%	0.46%	-1.01%	-5.42%	NYSE Arca
FINANCIAL SELECT SECTOR SPDR	USD	38.32	-2.29%	-1.79%	3.29%	-1.87%	NYSE Arca
VANECK GOLD MINERS ETF	USD	38.35	-0.78%	-0.54%	6.94%	19.73%	NYSE Arca
ISHARES RUSSELL 2000 ETF	USD	205.27	-1.05%	-0.28%	2.90%	-7.72%	NYSE Arca
SPDR GOLD SHARES	USD	180.65	0.04%	-1.35%	-0.53%	5.67%	NYSE Arca
ISHARES 20+ YEAR TREASURY BO	USD	132.08	0.24%	1.23%	-6.53%	-10.87%	NASDAQ GM
INVECO QQQ TRUST SERIES 1	USD	362.54	-1.24%	0.80%	6.16%	-8.88%	NASDAQ GM
ISHARES BIOTECHNOLOGY ETF	USD	130.30	-0.51%	0.21%	3.91%	-14.62%	NASDAQ GM
ENERGY SELECT SECTOR SPDR	USD	76.44	-1.36%	-0.80%	7.22%	37.73%	NYSE Arca
PROSHARES ULTRA VIX ST FUTUR	USD	13.46	7.25%	-4.81%	-33.82%	8.29%	Cboe BZX
UNITED STATES OIL FUND LP	USD	74.12	-4.86%	-7.06%	3.20%	38.35%	NYSE Arca
ISHARES MSCI BRAZIL ETF	USD	37.81	0.19%	1.83%	14.92%	34.70%	NYSE Arca
SPDR S&P OIL & GAS EXP & PR	USD	134.55	-1.43%	1.69%	12.82%	40.35%	NYSE Arca
UTILITIES SELECT SECTOR SPDR	USD	74.46	-0.11%	3.79%	10.57%	4.02%	NYSE Arca
ISHARES US REAL ESTATE ETF	USD	108.22	-1.05%	3.41%	6.69%	-6.82%	NYSE Arca
SPDR S&P BIOTECH ETF	USD	89.88	-0.88%	-2.06%	0.89%	-19.72%	NYSE Arca
ISHARES IBOXG INVESTMENT GRA	USD	120.94	-0.23%	0.60%	-3.22%	-8.74%	NYSE Arca
ISHARES JP MORGAN US EMERGI	USD	97.76	-0.10%	1.70%	0.45%	-10.36%	NASDAQ GM
REAL ESTATE SELECT SECTOR SPDR	USD	48.32	-1.11%	3.74%	7.43%	-6.74%	NYSE Arca
ISHARES CHINA LARGE-CAP ETF	USD	31.97	-3.53%	-1.98%	-8.21%	-12.60%	NYSE Arca
CONSUMER STAPLES SPDR	USD	75.89	-0.24%	1.98%	1.52%	-1.58%	NYSE Arca
VANECK JUNIOR GOLD MINERS	USD	46.87	-0.74%	-2.46%	3.37%	11.78%	NYSE Arca
SPDR BLOOMBERG HIGH YIELD BO	USD	102.50	-0.38%	0.59%	-0.95%	-5.59%	NYSE Arca
VANGUARD REAL ESTATE ETF	USD	106.37	-1.22%	0.63%	6.25%	-6.59%	NYSE Arca
GRAYSCALE BITCOIN TRUST BTC	USD	30.54	-4.74%	0.10%	-0.68%	-10.83%	OTC US

USA Treasury Bonds Yield Curve (%)



Source: Bloomberg

LIMA

Stocks

Ticker	Currency	Price	1D*	5D*	30D*	YTD*	Frequency	Volume (US\$)	Beta	Dividend Yield (%)	Price Earning	Market Cap. (M US\$)	Economic Sector*	Index Weight
- ALICORC1 PE**	S/.	5.55	0.00%	-1.64%	-1.57%	5.95%	100.00%	209,012	0.77	15.05	13.27	1,286.02	Industrial	3.53%
- ATACOCB1 PE**	S/.	0.13	0.00%	0.00%	0.00%	8.33%	50.00%	1,418	1.01	0.00	-	32.09	Mining	1.02%
- BACKJUI1 PE**	S/.	24.00	0.00%	2.56%	0.84%	17.07%	80.00%	139,008	0.76	12.98	8.38	8,205.94	Industrial	0.82%
▼ BAP PE**	US\$	172.72	-0.74%	-0.74%	16.08%	39.54%	100.00%	2,257,329	1.30	0.71	-	16,301.71	Diverse	5.82%
▲ BVN PE**	US\$	10.02	1.73%	-5.92%	-2.72%	37.26%	100.00%	186,158	1.30	0.00	-	2,757.12	Mining	5.88%
▲ CASAGRC1 PE**	S/.	10.15	-4.69%	4.64%	12.78%	11.54%	90.00%	71,843	0.81	53.22	6.12	232.31	Agricultural	1.31%
▲ BBVAC1 PE**	S/.	2.24	1.36%	1.82%	2.75%	23.76%	95.00%	115,482	0.80	2.03	9.76	4,113.51	Finance	2.85%
▼ CORAREH1 PE**	S/.	1.84	-1.08%	0.00%	1.10%	6.98%	100.00%	52,304	0.77	14.98	2.79	679.82	Industrial	1.72%
▲ CPACASC1 PE**	S/.	5.00	2.25%	3.09%	-0.99%	1.01%	100.00%	113,874	0.60	15.80	13.89	630.58	Industrial	2.38%
▼ CVERDEC1 PE**	US\$	45.20	-2.80%	-0.66%	0.44%	21.41%	100.00%	80,770	1.06	4.42	13.28	15,822.53	Mining	5.25%
▲ ENGEPEC1 PE**	S/.	2.30	1.77%	-2.13%	6.98%	11.11%	95.00%	16,652	0.72	13.52	9.20	1,497.11	Public Services	1.44%
- ENDISPC1**	S/.	4.52	0.00%	0.44%	2.73%	13.00%	60.00%	9,811	0.84	7.31	8.76	784.26	Public Services	0.98%
▼ FERREYC1 PE**	S/.	2.53	-2.32%	2.43%	6.75%	23.41%	100.00%	232,402	0.89	7.78	5.70	670.73	Diverse	4.90%
▲ AENZAC1 PE**	S/.	1.30	4.00%	4.00%	-5.80%	-5.11%	75.00%	61,829	0.96	0.00	-	307.99	Diverse	4.05%
▲ IFS PE**	US\$	33.95	-0.67%	-0.38%	5.73%	26.44%	100.00%	87,528	1.15	4.18	8.06	3,918.44	Diverse	7.22%
▼ INRETC1 PE**	US\$	37.52	0.05%	1.68%	1.43%	7.35%	95.00%	766,974	0.72	3.63	40.99	3,857.33	Diverse	5.28%
- LUSURC1 PE**	S/.	17.00	0.00%	0.00%	-1.16%	19.38%	60.00%	10,302	0.00	5.68	14.31	2,249.32	Public Services	1.81%
▼ MINSUR1 PE**	S/.	6.13	-0.81%	-1.92%	0.49%	55.19%	100.00%	35,380	1.01	11.22	2.91	4,802.00	Mining	3.09%
- PML PE**	US\$	0.15	0.00%	0.00%	7.14%	25.00%	50.00%	833	1.07	0.00	-	39.66	Mining	2.12%
▲ SCCO PE**	US\$	77.03	-0.18%	0.22%	6.99%	24.68%	100.00%	30,859	1.16	4.67	16.96	59,550.88	Industrial	2.12%
▼ SIDERC1 PE**	S/.	1.87	1.08%	20.65%	19.11%	16.88%	90.00%	77,641	0.69	23.67	4.06	355.68	Mining	2.14%
- TV PE**	US\$	1.14	0.00%	-0.87%	17.53%	-12.31%	100.00%	2,613	1.16	0.00	-	112.80	Industrial	1.43%
- UNACEMC1 PE**	S/.	2.16	0.00%	0.47%	-8.86%	-10.00%	100.00%	60,523	1.06	4.63	-	1,067.07	Mining	2.93%
- VOLCABC1 PE**	S/.	0.87	0.00%	0.00%	14.47%	45.00%	100.00%	1,904,504	0.84	0.00	25.12	1,904.59	Industrial	3.00%
- BROCALC1 PE**	S/.	8.10	0.00%	1.25%	6.58%	55.77%	30.00%	16,064	0.00	0.00	61.76	327.50	Mining	5.90%
- RIMSEGC1 PE**	S/.	0.80	0.00%	0.00%	0.00%	-6.98%	10.00%	220	0.00	0.00	15.04	359.06	Finance	3.09%
- CORAREC1 PE**	US\$	2.30	0.00%	0.00%	11.65%	21.05%	35.00%	18,464	0.00	0.00	3.48	2,501.94	Mining	2.12%
- ENGIEC1 PE**	S/.	6.65	0.00%	2.31%	2.47%	13.48%	45.00%	2,609	0.48	5.83	16.59	1,086.63	Diversas	2.12%
- GBVLAC1 PE**	S/.	2.60	0.00%	1.96%	4.00%	-4.41%	55.00%	17,472	0.00	3.91	27.02	128.16	Diversas	2.14%

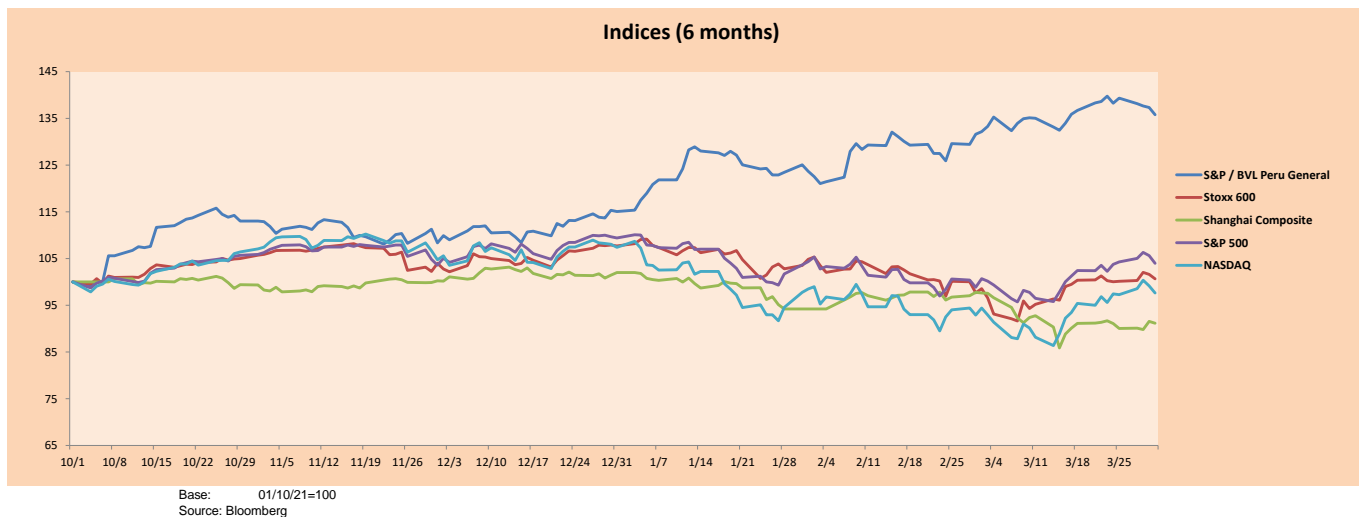
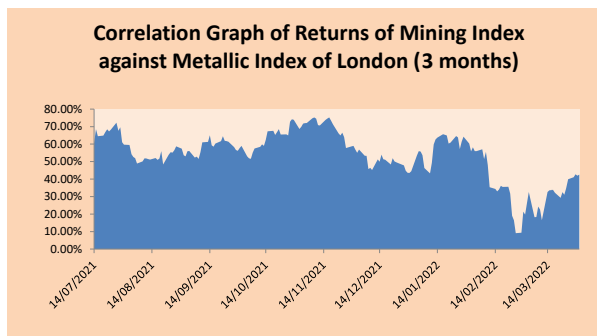
Quantity of shares: 29  
 Source: Bloomberg, Economía  
 \* Bloomberg Industry Classification System  
 \*\* PER is used in the stock market and original currency of the instrument  
 \*Legend: Variation 1D: 1 Day; 5D: 5 Days, 1M: 1 Month; YTD: Var.% 12/31/21 to date

Sectorial Indices

	Close	1D*	5D*	30D*	YTD*	Beta
▼ S&P/BVLMining	494.12	-1.18%	-2.53%	1.75%	20.05%	1.11
▼ S&P/BVLConsumer	1,166.67	-1.19%	-0.60%	-3.81%	1.63%	0.58
▼ S&P/BVLIndustrials	274.37	-0.07%	1.98%	0.28%	6.32%	0.51
▼ S&P/BVLFinancials	1,147.85	-1.86%	-2.04%	11.17%	26.68%	1.38
▲ S&P/BVLConstruction	284.02	0.94%	1.79%	-2.32%	0.23%	0.39
▲ S&P/BVLPublic Svcs	617.98	0.53%	0.60%	3.85%	12.67%	0.14
▲ S&P/BVLElectricUtil	603.30	0.53%	0.60%	3.85%	12.67%	0.14

S&P/BVLConstructionTRPEN

\*Legend: Variation 1D: 1 Day; 5D: 5 Days, 1M: 1 Month; YTD: Var.% 12/31/21 to date



Base: 01/10/21=100  
 Source: Bloomberg

Capital Market Laboratory Coordinator: MS Javier Penny Pestana  
 Collaboration: Sebastian Ore, Fabrizio Lavalle, Miguel Solimano y Jhonatan Cueva  
 email: pulsobursatil@ulima.edu.pe  
 facebook: www.facebook.com/pulsobursatil.ul

## SOVEREIGN RATING

### RISK RATINGS

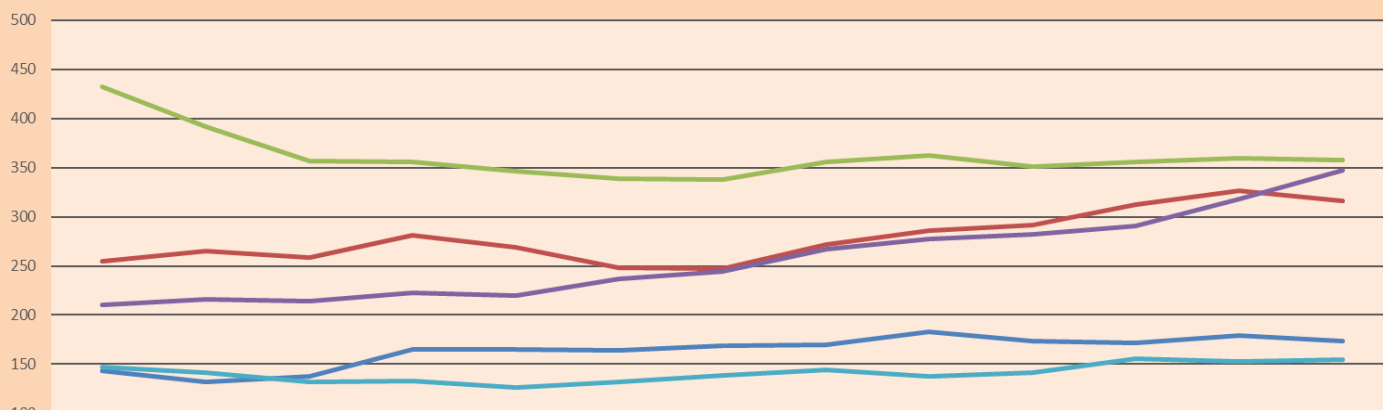
Moody's	S&P	Fitch		
Aaa	AAA	AAA	Prime	
Aa1	AA+	AA+	High credit quality	
Aa2	AA	AA		
Aa3	AA-	AA-		
A1	A+	A+	Medium-high grade, with low credit risk	
A2	A	A		
A3	A-	A-		
Baa1	BBB+	BBB+	Moderate Credit Risk	
Baa2	BBB	BBB		
Baa3	BBB-	BBB-		
Ba1	BB+	BB+	It has speculative elements and it is subject to substantial credit risk	
Ba2	BB	BB		
Ba3	BB-	BB-		
B1	B+	B+	It is considered speculative and it has high credit risk	
B2	B	B		
B3	B-	B-		
Caa1	CCC+	CCC	Bad credit conditions and it is subject to high credit risk	
Caa2	CCC			
Caa3	CCC-			
Ca	C	DDD	Very close to default or in default	
C	D			DD
				D

Source: Bloomberg

Latin America Credit Rating			
Clasificadora de riesgo			
Country	Moody's	Fitch	S&P
Peru	Baa1	BBB	BBB
México	Ba2	BB-	BB-
Venezuela	C	WD	NR
Brazil	Ba2	BB-	BB-
Colombia	Baa2	BB+	BB+
Chile	A1	A-	A
Argentina	Ca	WD	CCC+
Panama	Baa2	BBB-	BBB

Source: Bloomberg

## LATAM Country Risk (bps)



	dic-20	ene-21	feb-21	mar-21	abr-21	may-21	jun-21	jul-21	ago-21	sep-21	oct-21	nov-21	dic-21
Perú	143	132	138	165	165	164	169	170	183	174	172	179	174
Brasil	255	265	259	281	269	248	247	272	286	292	312	327	316
México	432	392	357	356	346	339	338	356	362	351	356	360	358
Colombia	210	216	214	223	220	237	244	267	277	282	291	318	347
Chile	147	141	132	133	126	132	139	144	138	141	156	153	155

Source: BCRP

Capital Market Laboratory Coordinator: MS Javier Penny Pestana  
Collaboration: Sebastian Ore, Fabrizio Lavalle, Miguel Solimano y Jhonatan Cueva  
email: pulsohorsatil@ulima.edu.pe  
facebook: www.facebook.com/pulsohorsatil.ul