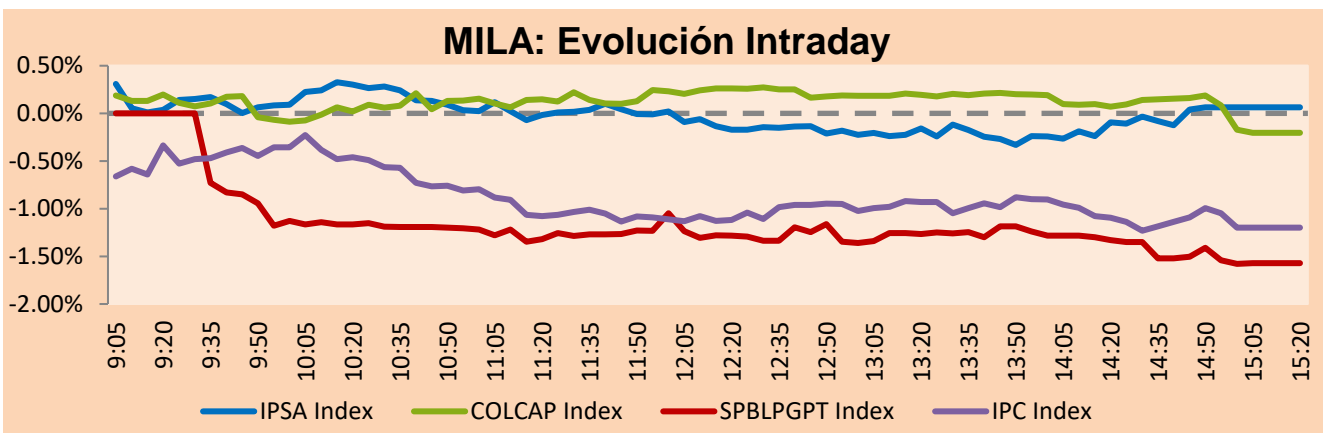


MILA

Lima, April 8, 2022

Main Indexes	Close	1 D	5 D	1 M	YTD	Cap. Burs. (US\$ bill)
▲ IPSA (Chile)	4,969.25	0.08%	-0.19%	8.53%	15.34%	112.11
▲ IGPA (Chile)	25,465.41	0.31%	0.19%	9.59%	18.08%	128.17
▼ COLSC (Colombia)	1,022.74	-0.14%	-0.85%	-2.98%	5.10%	7.19
▼ COLCAP (Colombia)	1,625.53	-0.20%	-0.08%	5.88%	15.21%	96.12
▼ S&P/BVL (Perú)*	24,260.24	-1.57%	-2.73%	-1.28%	14.91%	118.82
▼ S&P/BVL SEL (Perú)	638.71	-0.87%	-1.90%	-1.14%	13.33%	108.26
▼ S&P/BVL LIMA 25	35,880.47	-0.65%	-0.01%	1.82%	18.52%	117.96
▼ IPC (México)	54,687.25	-1.07%	-3.40%	2.63%	2.66%	348.70
▼ S&P MILA 40	557.64	-0.61%	-3.17%	5.47%	25.35%	6,990.05

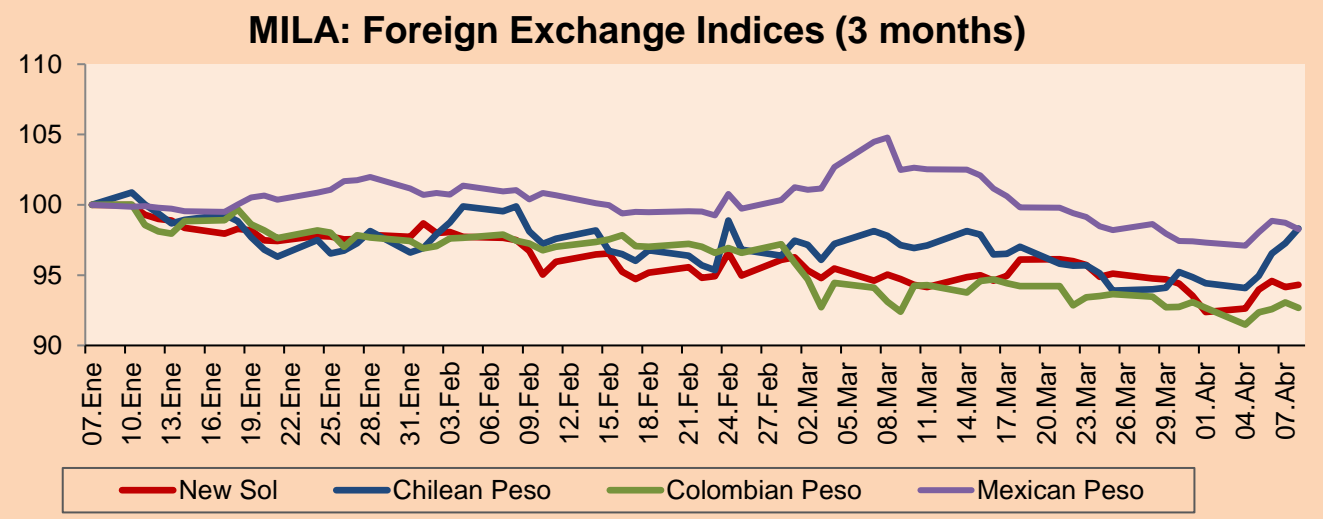
*Legend: Variation 1D: 1 day; 5D: 5 days; 1M: 1 Month; YTD: Var% 12/31/21 to date



Source: Bloomberg

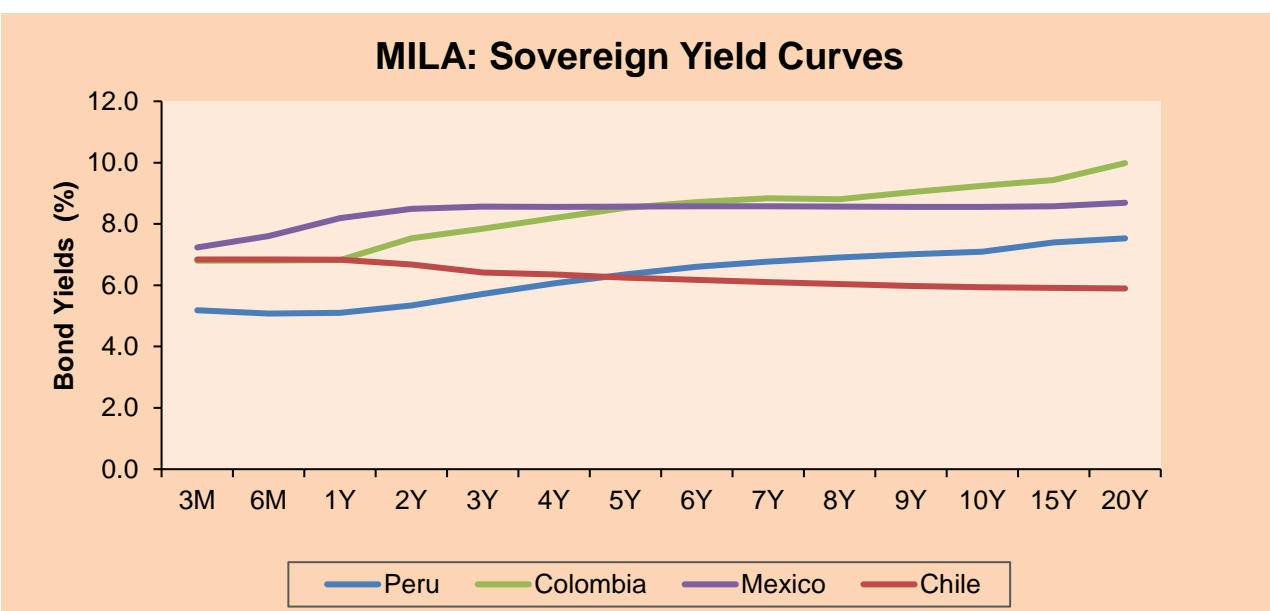
Currency	Price	1D*	5D*	30 D*	YTD*
▲ Sol (PEN)	3,711.2	0.18%	2.10%	-0.42%	-7.20%
▲ Chilean Peso (CLP)	814.70	1.09%	4.13%	1.23%	-4.38%
▼ Colombian Peso (COP)	3,754.00	-0.41%	-0.02%	0.30%	-8.00%
▼ Mexican Peso (MXN)	20.05	-0.47%	0.97%	-4.12%	-2.35%

*Legend: Variation 1D: 1 day; 5D: 5 days; 1M: 1 Month; YTD: Var% 12/31/21 to date



Base: 07/01/21=100
Source: Bloomberg

Fixed Income	Currency	Price	Bid Yield (%)	Ask Yield (%)	Duration
PERU 7.35 07/21/25	USD	111.562	3.63	3.52	2.91
PERU 4.125 08/25/27	USD	101.286	3.89	3.83	4.78
PERU 8.75 11/21/33	USD	139.324	4.41	4.37	7.87
PERU 6.55 03/14/37	USD	121.613	4.56	4.52	9.62
PERU 5.625 11/18/2050	USD	119.4	4.43	4.42	15.16
CHILE 2.25 10/30/22	USD	100.28	2.08	1.40	0.54
CHILE 3.125 01/21/26	USD	99.493	3.34	3.20	3.53
CHILE 3.625 10/30/42	USD	89.517	4.43	4.38	13.87
COLOM 11.85 03/09/28	USD	145.386	3.41	3.24	4.59
COLOM 10.375 01/28/33	USD	134.107	6.13	5.93	7.02
COLOM 7.375 09/18/37	USD	110.638	6.33	6.25	9.49
COLOM 6.125 01/18/41	USD	95.15	6.60	6.55	10.79
MEX 4 10/02/23	USD	95.15	6.601	6.554	10.79
MEX5.55 01/45	USD	104.98	5.20	5.15	13.03



Source: Bloomberg

Equity

Largest gains	Exchange	Currency	Price	▲%	Largest losses	Exchange	Currency	Price	▼%
BUENAVENTURA-ADR	Peru	USD	10.70	4.80	CREDICORP LTD	Peru	USD	146.11	-8.25
BECLE SAB DE CV	Mexico	MXN	47.90	4.65	CEMEX SAB-CPO	Mexico	MXN	9.21	-4.86
INDUSTRIAS PENOL	Mexico	MXN	245.24	3.33	ENGIE ENERGIA CH	Chile	CLP	445	-4.02
COLBUN SA	Chile	CLP	62.49	3.12	GRUPO CARSO-A1	Mexico	MXN	71.2	-3.17
AGUAS ANDINAS-A	Chile	CLP	170.00	3.03	AERO DEL PACIF-B	Mexico	MXN	304.01	-2.97

Per Turnover	Exchange	Amount (US\$)	Per Volume	Exchange	Volume
GRUPO F BANORT-O	Mexico	62,483,251	ITAU CORPBANCA	Chile	773,343,286
WALMART DE MEXIC	Mexico	39,406,718	BANCO SANTANDER	Chile	108,313,303
AMERICA MOVIL-L	Mexico	38,600,769	GRUPO AVAL SA-PF	Colombia	90,895,928
SOQUIMICH-B	Chile	29,483,061	ENEL AMERICAS SA	Chile	54,529,058
GRUPO AVAL SA-PF	Colombia	20,627,352	BANCO DE CHILE	Chile	39,397,764

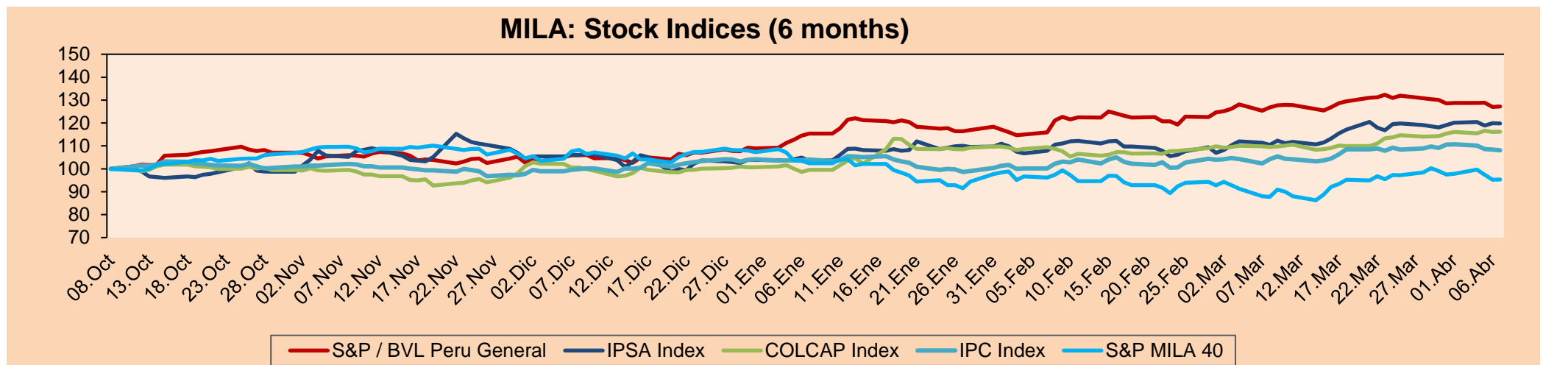
MILA

Peru: The BVL General Index ended today's session with a negative result of -1.52%. The index maintains a positive cumulative annual trend of +14.91% in local currency, while the dollar-adjusted return amounts to +23.83%. Then, the S&P/BVL Peru SEL varied by -0.87% while the S&P/BVL LIMA 25 varied by -0.65%. The spot PEN reached S/3.7109. Headline: Annual growth of 2% is not enough to generate quality employment or reduce poverty: behind the stagnation.

Chile: The IPSA index ended the day with a positive result of +0.09%. The best performing sectors of the day were industrials (+2.90%) and information technology (+1.98%). The best performers were Quinenco SA (+4.25%) and Colbun SA (+3.12%). Headline: CPI posts biggest rise in almost 30 years in March, pushed up by food prices.

Colombia: The COLCAP index ended the session with a negative return of -0.20%. The worst performing sectors of the day were energy (-1.03%) and consumer discretionary (-0.40%). The worst performers were Promigas SA (-7.18%) and Bancolombia SA (-2.85%). Headline: Colombian economy to grow by around 4% in 2022, says World Bank.

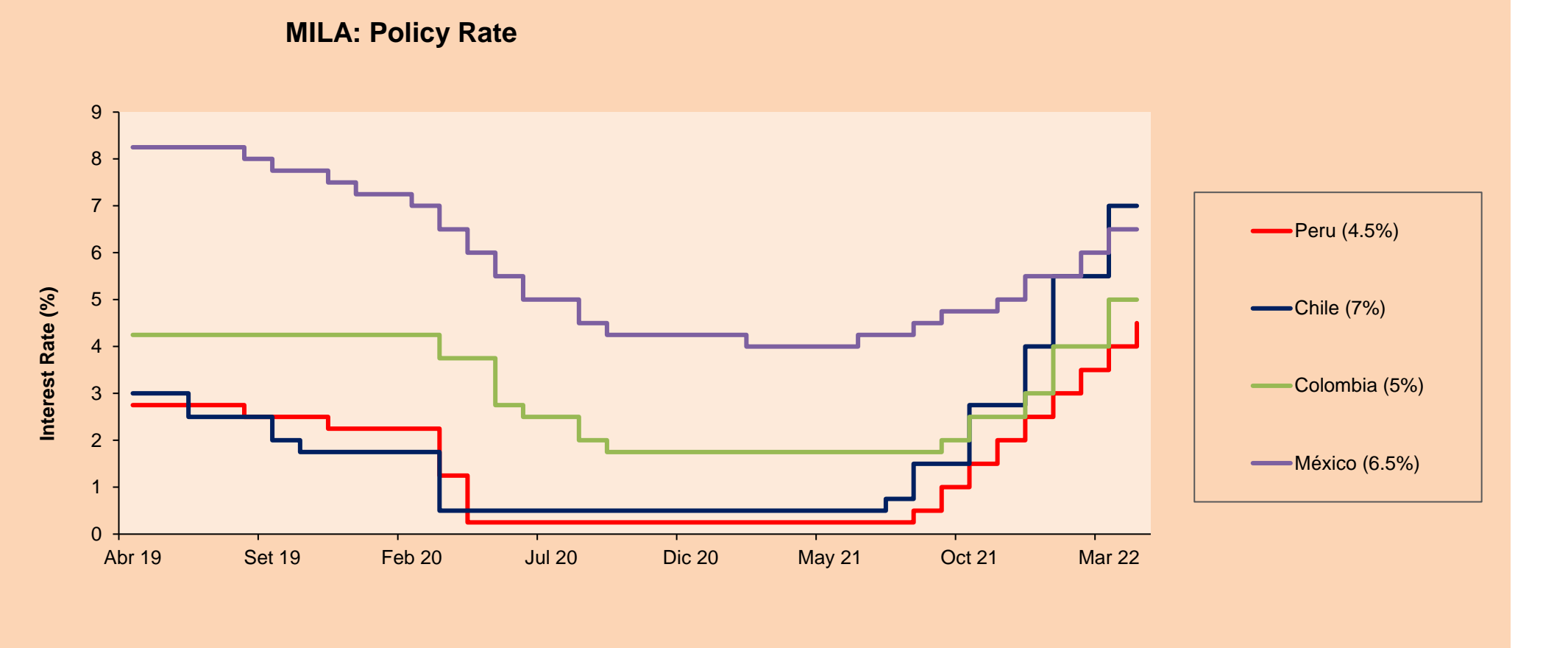
Mexico: The IPC index closed the day in negative territory of -1.07%. The worst performing sectors of the day were industrials (-2.43%) and financials (-2.37%). The worst performing stocks were Regional SAB de CV (-8.69%) and Cemex SAB de CV (+4.86%). Headline: AMLO responds to Ken Salazar on electricity law. If the US sues, Mexico will do the same.



Base: 11/10/21=100
Source: Bloomberg

ETFs

ETFs	Curr.	Close	1D	5D	30 D	YTD	Exchange
▼ iShares MSCI All Peru Caped Index Fund	USD	36.39	-1.57%	-3.22%	-0.66%	22.86%	NYSE Arca
▼ iShares MSCI All Chile Caped Index Fund	USD	28.4	-1.05%	-3.89%	5.73%	23.00%	Cboe BZX
▲ Global X MSCI Colombia	USD	12.46	0.89%	-1.03%	6.59%	24.69%	NYSE Arca
▼ iShares MSCI Mexico Capped	USD	53.16	-0.51%	-3.97%	7.00%	5.06%	NYSE Arca
▲ iShares MSCI Emerging Markets	USD	44.93	0.09%	-2.11%	1.40%	-8.02%	NYSE Arca
▲ Vanguard FTSE Emerging Markets	USD	46.22	0.20%	-1.68%	1.65%	-6.55%	NYSE Arca
▲ iShares Core MSCI Emerging Markets	USD	55.4	0.13%	-1.89%	1.69%	-7.45%	NYSE Arca
▲ iShares JP Morgan Emerging Markets Bonds	USD	61.31	0.20%	-0.70%	1.32%	-2.40%	Cboe BZX
▼ Morgan Stanley Emerging Markets Domestic	USD	4.78	-0.21%	-4.02%	-2.05%	-12.77%	New York



Source: Bloomberg

LIMA

Stocks

Ticker	Currency	Price	1D*	5D*	30D*	YTD*	Frequency	Volume (US\$)	Beta	Dividend Yield (%)	Price Earning	Market Cap. (M US\$)	Economic Sector*	Index Weight
▼ ALICORC1 PE**	S/.	5.60	-0.14%	-0.85%	-2.98%	5.10%	100.00%	1,018,267	0.75	14.91	13.39	1,286.53	Industrial	3.53%
- ATACOCB1 PE**	S/.	0.13	0.00%	0.00%	-7.14%	8.33%	55.00%	1,785	1.01	0.00	-	31.82	Mining	1.02%
▼ BACKUS1 PE**	S/.	23.90	-0.42%	-1.24%	3.46%	16.53%	85.00%	2,248	0.75	13.03	8.09	8,122.82	Industrial	0.82%
▼ BAP PE**	US\$	146.11	-8.25%	-14.23%	-10.11%	18.04%	100.00%	5,450,444	1.27	0.83	-	13,790.20	Diverse	5.82%
▲ BVN PE**	US\$	10.70	4.80%	3.38%	1.90%	46.58%	100.00%	1,327,290	1.28	0.00	-	2,944.23	Mining	5.88%
▼ CASAGRC1 PE**	S/.	10.70	-1.02%	5.42%	17.58%	17.58%	90.00%	69,204	0.85	50.48	6.45	242.86	Agricultural	1.31%
▼ BBVAC1 PE**	S/.	2.20	-0.45%	-1.79%	2.33%	21.55%	100.00%	16,639	0.75	2.06	9.57	4,006.42	Finance	2.85%
- CORARE1 PE**	S/.	1.93	0.00%	1.58%	4.89%	12.21%	100.00%	9,688	0.74	0.00	2.92	721.73	Industrial	1.72%
▲ CPACASC1 PE**	S/.	5.00	1.01%	-1.96%	3.52%	1.01%	100.00%	12,796	0.61	15.80	13.89	625.33	Industrial	2.38%
▼ CVERDEC1 PE**	US\$	45.49	-0.02%	-0.02%	-2.17%	22.19%	100.00%	123,667	1.06	4.40	13.36	15,924.05	Mining	5.25%
▼ ENGEPEC1 PE**	S/.	2.35	-0.42%	1.29%	8.80%	13.53%	100.00%	11,455	0.73	13.23	9.40	1,516.92	Public Services	1.44%
- ENDISPC1**	S/.	4.48	0.00%	-0.88%	1.82%	12.00%	65.00%	1,289	0.84	0.00	8.68	770.85	Public Services	0.98%
- FERREYC1 PE**	S/.	2.55	0.00%	0.00%	6.25%	24.39%	100.00%	3,787,082	0.86	7.72	5.74	670.40	Diverse	4.90%
▲ AENZAC1 PE**	S/.	1.55	1.31%	19.23%	19.23%	13.14%	80.00%	500,426	0.97	0.00	-	364.16	Diverse	4.05%
▼ IFS PE**	US\$	33.45	-1.33%	-2.93%	0.54%	24.58%	100.00%	120,998	1.13	4.25	8.01	3,860.73	Diverse	7.22%
▼ INRETC1 PE**	US\$	37.00	-0.80%	-1.99%	-0.67%	5.87%	100.00%	144,575	0.68	3.68	40.76	3,803.87	Diverse	5.28%
- LUSURC1 PE**	S/.	16.90	0.00%	-0.59%	0.60%	18.68%	65.00%	17,043	0.00	0.00	14.23	2,217.47	Public Services	1.81%
▼ MINSUR1 PE**	S/.	6.15	-0.81%	0.00%	1.65%	55.70%	100.00%	349,552	1.01	11.18	2.89	4,777.56	Mining	3.09%
- PML PE**	US\$	0.14	0.00%	0.00%	0.00%	16.67%	50.00%	3,236	1.08	0.00	-	37.01	Mining	2.12%
▲ SCCO PE**	US\$	74.03	1.76%	-5.31%	-1.62%	19.83%	100.00%	653,386	1.23	4.86	16.30	57,231.62	Industrial	2.12%
▲ SIDERC1 PE**	S/.	1.93	-0.52%	1.05%	23.72%	20.63%	100.00%	99,958	0.63	22.93	4.19	364.03	Mining	2.14%
- TV PE**	US\$	1.15	0.00%	-4.17%	-1.71%	-11.54%	100.00%	9,212	1.14	0.00	-	113.79	Industrial	1.43%
▼ UNACEMC1 PE**	S/.	2.12	-1.40%	-3.64%	-7.83%	-11.67%	100.00%	103,098	1.06	4.72	-	1,038.59	Mining	2.93%
- VOLCABC1 PE**	S/.	0.91	0.00%	2.25%	3.41%	51.67%	100.00%	180,673	0.85	0.00	25.75	1,875.45	Industrial	3.00%
▲ BROCALC1 PE**	S/.	7.90	1.28%	1.28%	-1.25%	51.92%	20.00%	14,851	0.00	1.09	59.74	316.33	Mining	5.90%
- RIMSEGC1 PE**	S/.	0.84	0.00%	5.00%	0.00%	-2.33%	15.00%	3,395	0.00	0.00	15.80	373.87	Finance	3.09%
- CORAREC1 PE**	US\$	2.47	0.00%	2.92%	19.90%	30.00%	50.00%	138,320	0.00	0.00	3.74	2,678.48	Mining	2.12%
- ENGIEC1 PE**	S/.	6.56	0.00%	-2.09%	0.92%	11.95%	50.00%	5,536	0.48	0.00	16.22	1,063.00	Diversas	2.12%
- GBVLAC1 PE**	S/.	2.55	0.00%	-1.92%	2.00%	-6.25%	55.00%	26,797	0.00	0.00	26.50	124.75	Diversas	2.14%

Quantity of shares: 29
Source: Bloomberg, Economática
* Bloomberg Industry Classification System
** PER is used in the stock market and original currency of the instrument

Up 5
Down 12
Hold 12

*Legend: Variation 1D: 1 Day; 5D: 5 Days, 1M: 1 Month; YTD: Var.% 12/31/21 to date

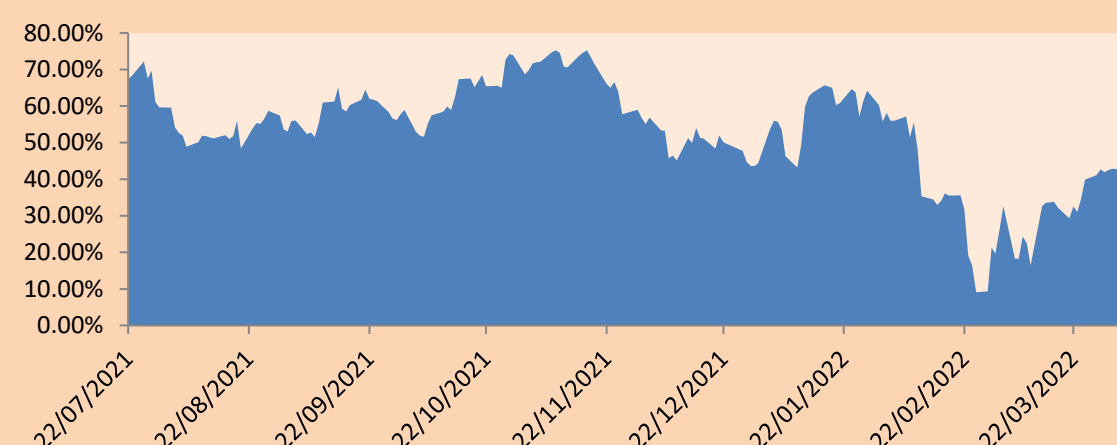
Sectorial Indices

	Close	1D*	5D*	30D*	YTD*	Beta
▲ S&P/BVLMining	494.59	1.86%	-0.67%	-1.05%	20.16%	1.17
▼ S&P/BVLConsumer	1,168.73	-1.08%	-0.57%	-0.72%	1.81%	0.55
▼ S&P/BVLIndustrials	281.78	-0.10%	0.92%	4.75%	9.19%	0.51
▼ S&P/BVLFinancials	1,000.66	-7.31%	-11.03%	-9.00%	10.44%	1.38
▼ S&P/BVLConstruction	294.04	-0.14%	1.31%	4.13%	3.76%	0.40
▼ S&P/BVLPublicSvcs	623.70	-0.13%	0.26%	4.58%	13.71%	0.09
▼ S&P/BVLElectricUtil	608.89	-0.13%	0.27%	4.58%	13.71%	0.09

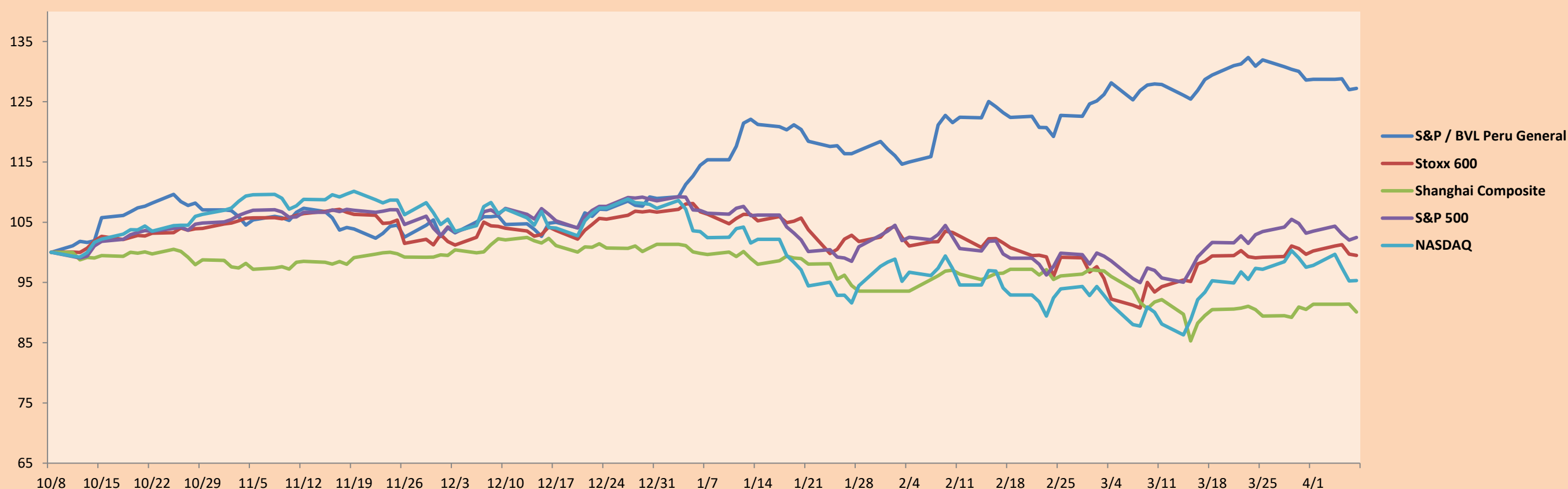
S&P/BVLConstructionTRPEN

*Legend: Variation 1D: 1 Day; 5D: 5 Days, 1M: 1 Month; YTD: Var.% 12/31/21 to date

Correlation Graph of Returns of Mining Index against Metallic Index of London (3 months)



Indices (6 months)



Base: 08/10/21=100
Source: Bloomberg

Capital Market Laboratory Coordinator: MS Javier Penny Pestana
Collaboration: Sebastian Ore, Fabrizio Lavalle, Miguel Solimano y Jhonatan Cueva
email: pulsobursatil@ulima.edu.pe
facebook: www.facebook.com/pulsobursatil.ul

SOVEREIGN RATING

RISK RATINGS

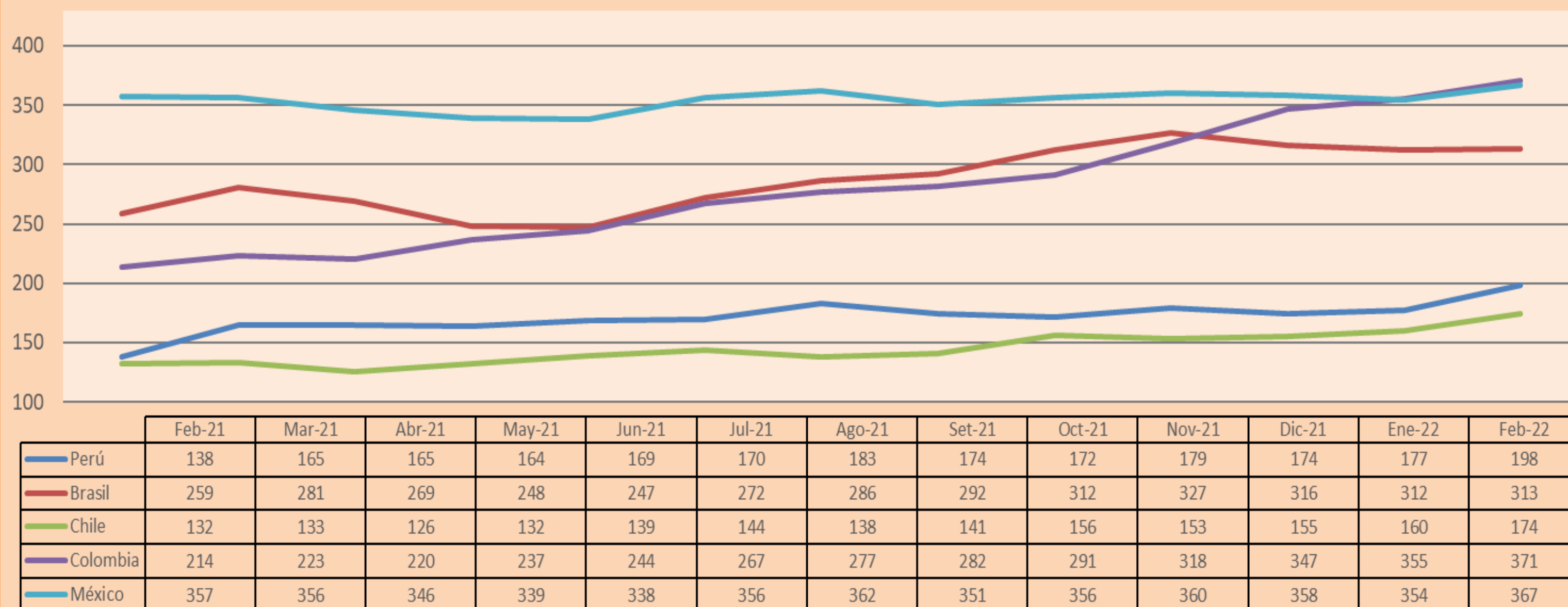
Moody's	S&P	Fitch	
Aaa	AAA	AAA	Prime
Aa1	AA+	AA+	High credit quality
Aa2	AA	AA	
Aa3	AA-	AA-	
A1	A+	A+	Medium-high grade, with low credit risk
A2	A	A	
A3	A-	A-	
Baa1	BBB+	BBB+	Moderate Credit Risk
Baa2	BBB	BBB	
Baa3	BBB-	BBB-	
Ba1	BB+	BB+	It has speculative elements and it is subject to substantial credit risk
Ba2	BB	BB	
Ba3	BB-	BB-	
B1	B+	B+	It is considered speculative and it has high credit risk
B2	B	B	
B3	B-	B-	
Caa1	CCC+	CCC	Bad credit conditions and it is subject to high credit risk
Caa2	CCC		
Caa3	CCC-		
Ca	CC	DDD	Very close to default or in default
	C		
C	D		

Source: Bloomberg

Latin America Credit Rating			
Clasificadora de riesgo			
Country	Moody's	Fitch	S&P
Peru	Baa1	BBB	BBB
México	Ba2	BB-	BB-
Venezuela	C	WD	NR
Brazil	Ba2	BB-	BB-
Colombia	Baa2	BB+	BB+
Chile	A1	A-	A
Argentine	Ca	WD	CCC+
Panama	Baa2	BBB-	BBB

Source: Bloomberg

LATAM Country Risk(bps)



Source: BCRP

Capital Market Laboratory Coordinator: MS Javier Penny Pestana
Collaboration: Sebastian Ore, Fabrizio Lavalle, Miguel Solimano y Jhonatan Cueva
email: pulsobursatil@ulima.edu.pe
facebook: www.facebook.com/pulsobursatil.ul