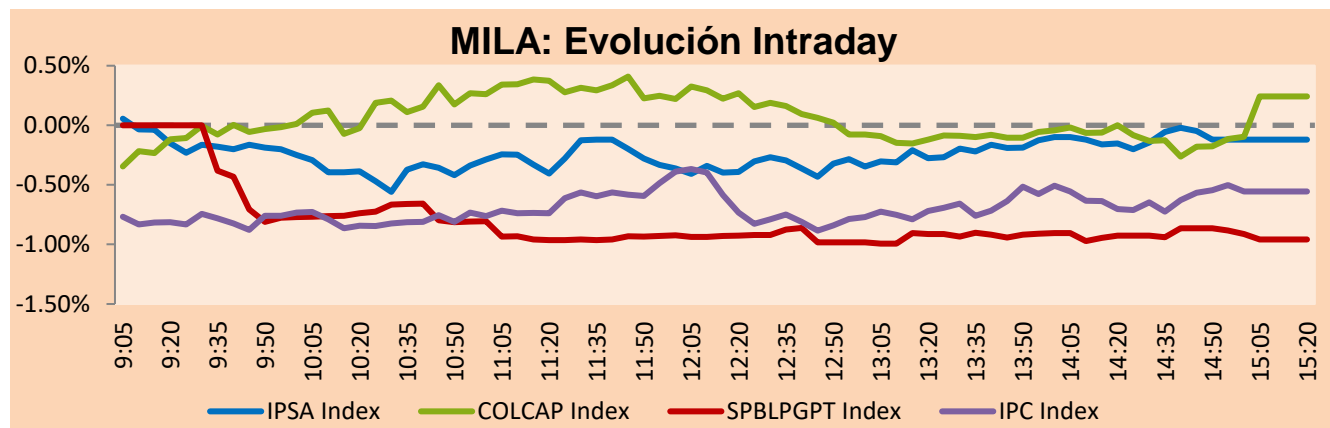


## MILA

Lima, June 3, 2022

Main Indexes	Close	1 D	5 D	1 M	YTD	Cap. Burs. (US\$ bill)
▼ IPSA (Chile)	5,352.44	-0.01%	-0.64%	11.84%	24.23%	116.41
▼ IGPA (Chile)	28,124.94	-0.13%	-1.65%	14.96%	30.41%	134.44
▲ COLSC (Colombia)	945.36	0.03%	2.31%	-3.76%	-2.85%	6.40
▲ COLCAP (Colombia)	1,614.09	0.24%	6.99%	1.30%	14.40%	91.53
▼ S&P/BVL (Perú)*	20,876.94	-0.96%	0.08%	-7.60%	-1.11%	99.45
▼ S&P/BVL SEL (Perú)	546.45	-1.10%	0.45%	-7.40%	-3.04%	90.37
▼ S&P/BVL LIMA 25	28,861.30	-0.36%	-0.29%	-11.53%	-4.67%	98.61
▼ IPC (México)	50,689.05	-0.55%	-3.38%	-0.74%	-4.85%	329.88
▲ S&P MILA 40	551.78	2.18%	5.44%	9.50%	24.04%	6,452.25

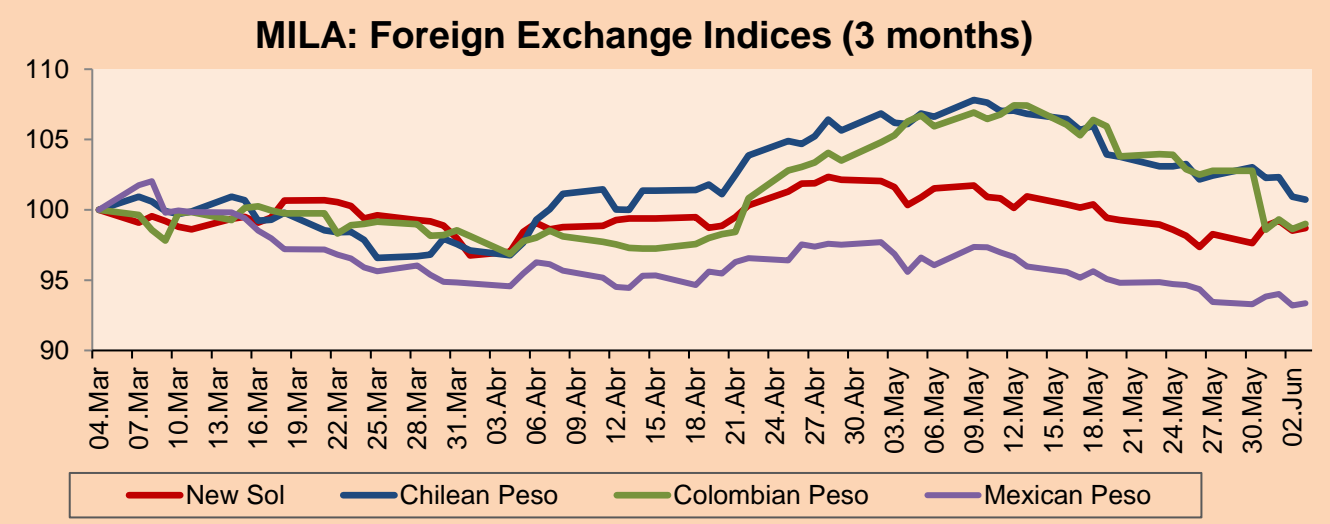
\*Legend: Variation 1D: 1 day; 5D: 5 days; 1M: 1 Month; YTD: Var% 12/31/21 to date



Source: Bloomberg

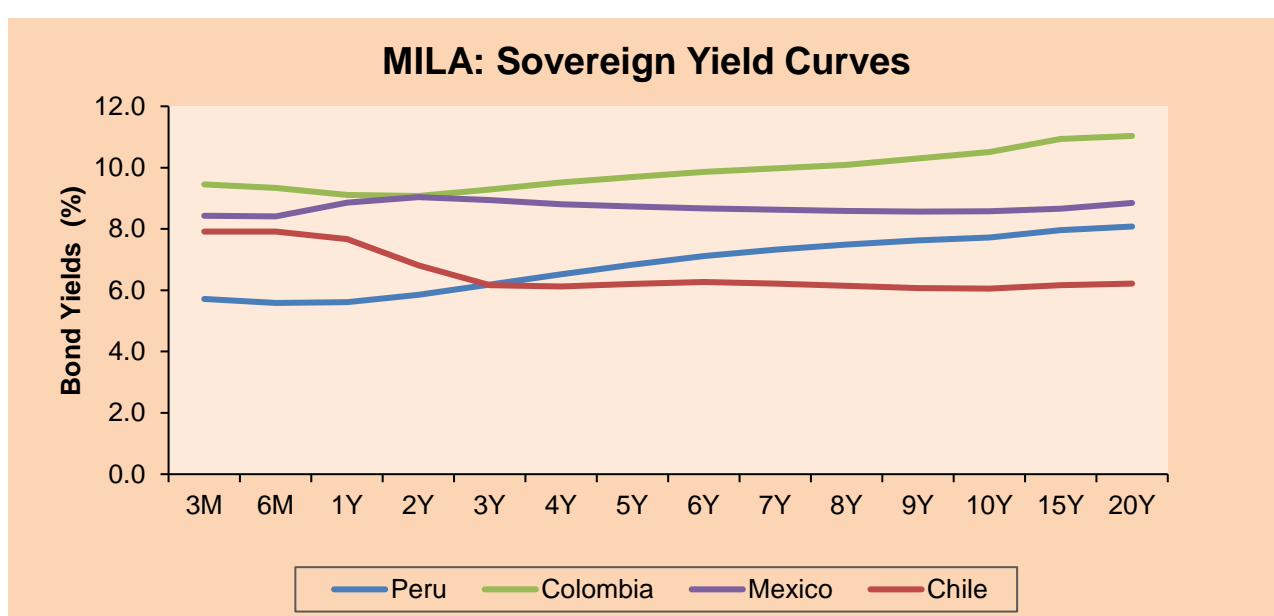
Currency	Price	1D*	5D*	30 D*	YTD*
▲ Sol (PEN)	3,7087	0.21%	0.47%	-1.63%	-7.26%
▼ Chilean Peso (CLP)	811.50	-0.19%	-1.67%	-5.06%	-4.75%
▲ Colombian Peso (COP)	3,788.32	0.38%	-3.67%	-6.84%	-7.16%
▲ Mexican Peso (MXN)	19.56	0.18%	-0.10%	-2.32%	-4.72%

\*Legend: Variation 1D: 1 day; 5D: 5 days; 1M: 1 Month; YTD: Var% 12/31/21 to date



Base: 04/03/22=100  
Source: Bloomberg

Fixed Income	Currency	Price	Bid Yield (%)	Ask Yield (%)	Duration
PERU 7.35 07/21/25	USD	109.754	4.08	3.91	2.75
PERU 4.125 08/25/27	USD	99.758	4.23	4.12	4.62
PERU 8.75 11/21/33	USD	131.744	5.11	5.02	7.82
PERU 6.55 03/14/37	USD	113.947	5.23	5.14	9.30
PERU 5.625 11/18/2050	USD	110.053	4.99	4.94	14.76
CHILE 2.25 10/30/22	USD	100.139	2.48	1.31	0.40
CHILE 3.125 01/21/26	USD	98.76	3.57	3.42	3.37
CHILE 3.625 10/30/42	USD	84.114	4.91	4.81	13.83
COLOM 11.85 03/09/28	USD	141.674	3.84	3.62	4.42
COLOM 10.375 01/28/33	USD	131.113	6.43	6.20	6.82
COLOM 7.375 09/18/37	USD	104.303	6.96	6.87	9.14
COLOM 6.125 01/18/41	USD	90.596	7.08	7.00	10.43
MEX 4 10/02/23	USD	90.596	7.075	7.002	10.43
MEX5.55 01/45	USD	97.283	5.79	5.74	12.52



Source: Bloomberg

### Equity

Largest gains	Exchange	Currency	Price	▲%	Largest losses	Exchange	Currency	Price	▼%
SURAMERICANA	Colombia	COP	51000.00	11.84	BUENAVENTURA-ADF	Peru	USD	8.73	-3.00
ENEL CHILE SA	Chile	CLP	23.60	5.78	FIBRA TERRA	Mexico	MXN	27.81	-2.93
ENGIE ENERGIA CH	Chile	CLP	422.00	5.38	GRUPO TELEV-CPO	Mexico	MXN	37.89	-2.62
CENCOSUD SHOPPIN	Chile	CLP	910.00	4.70	ISA SA	Colombia	COP	22600	-2.59
PARQUE ARAUCO	Chile	CLP	805.00	2.53	CAP	Chile	CLP	11050	-2.20

Per Turnover	Exchange	Amount (US\$)
AMERICA MOVIL-L	Mexico	82,730,759
BANCO DE CHILE	Chile	33,012,150
SOQUIMICH-B	Chile	30,251,719
WALMART DE MEXIC	Mexico	29,469,386
GRUPO F BANORT-O	Mexico	29,102,263

Per Volume	Exchange	Volume
ITAU CORPBANCA	Chile	417,515,218
BANCO DE CHILE	Chile	312,860,975
ENEL CHILE SA	Chile	193,820,201
AMERICA MOVIL-L	Mexico	79,261,391
ENEL AMERICAS SA	Chile	58,433,519

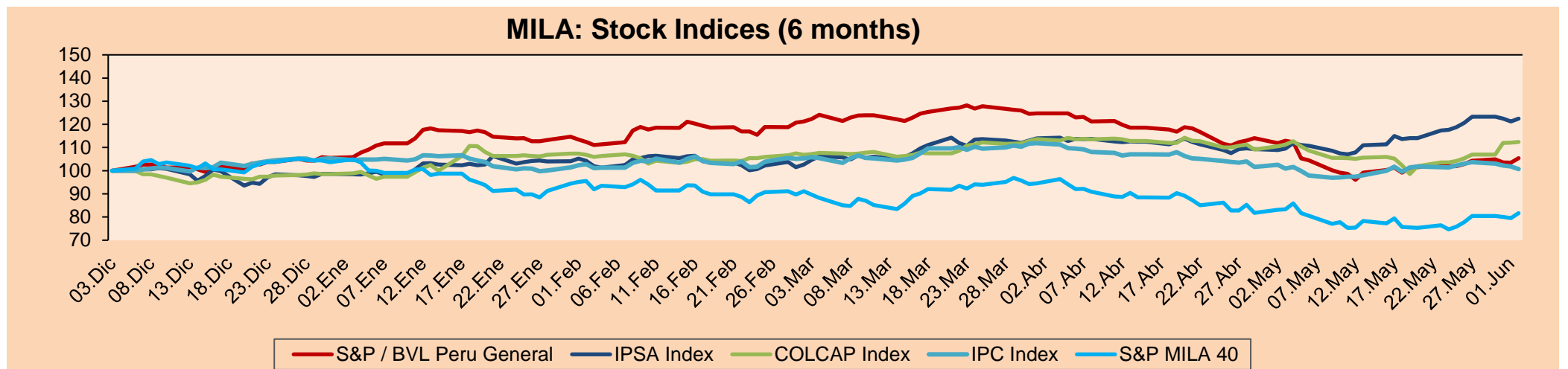
### MILA

Peru: The BVL General index ended today's session with a negative result of -0.96%. The index maintains a positive annual cumulative trend of +0.08% in local currency, while the dollar-adjusted performance amounted to -0.39%. Next, the S&P/BVL Peru SEL varied by -1.1% while the S&P/BVL LIMA 25 by -0.36%. The spot PEN reached S/3.7087. Headline: Families spend more than 42% of their budget on food.

Chile: The IPSA index ended the day with a negative return of -0.01%. The most impacted sectors of the day were Information Technology (-1.62%) and Communication Services (-1.29%). The worst performing stocks were CAP SA (-2.20%) and Sonda SA (-1.62%). Headline: The opening of checking accounts in dollars soars 800% and these are the reasons.

Colombia: The COLCAP index ended the session with a positive return of +0.24%. The most benefited sectors of the day were Consumer Staples (+1.93%) and Energy (+1.37%). The best performing stocks were Grupo de Inversiones Suramericana (+11.84%) and Banco de Bogotá SA (+2.56%). Headline: Colombia equals OECD average with 9.2% inflation in April.

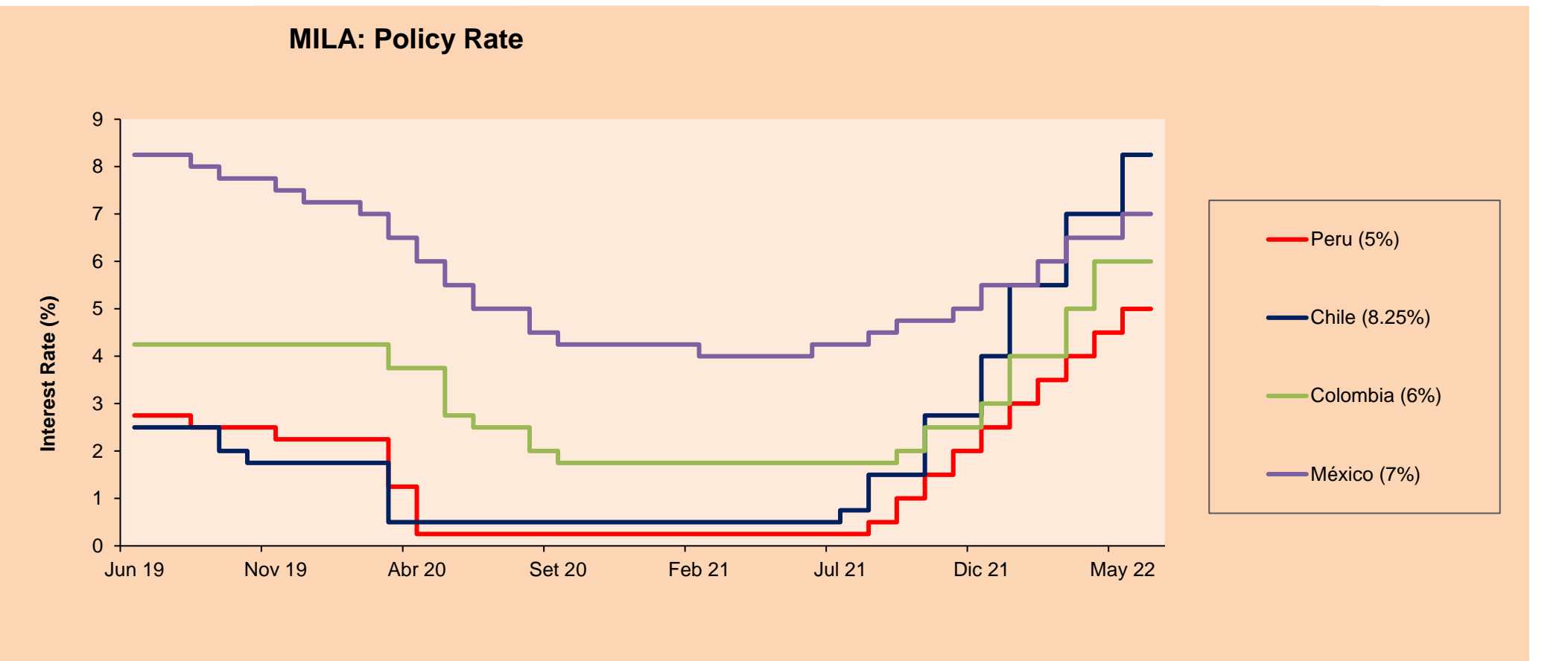
Mexico: The IPC index closed the day in negative territory at -0.55%. The worst performing sectors of the day were Communication Services (-1.65%) and Materials (-0.82%). The worst performing stocks were Grupo Televisa SA (-2.62%) and Grupo Cementos de Chihuahua SA (-2.47%). Headline: PACIC cannot contain food price increases, warns ANPE



Base: 06/12/21=100  
Source: Bloomberg

### ETFs

ETFs	Curr.	Close	1D	5D	30 D	YTD	Exchange
▼ iShares MSCI All Peru Caped Index Fund	USD	31.38	-1.01%	0.45%	-2.61%	5.94%	NYSE Arca
▼ iShares MSCI All Chile Caped Index Fund	USD	30.75	-0.23%	0.16%	15.17%	33.17%	Cboe BZX
▼ Global X MSCI Colombia	USD	12.112	-0.80%	7.33%	6.34%	21.20%	NYSE Arca
▼ iShares MSCI Mexico Capped	USD	51.23	-0.52%	-3.63%	1.47%	1.25%	NYSE Arca
▼ iShares MSCI Emerging Markets	USD	42.37	-1.63%	0.76%	-1.67%	-13.27%	NYSE Arca
▼ Vanguard FTSE Emerging Markets	USD	43.44	-1.56%	0.93%	-1.52%	-12.17%	NYSE Arca
▼ iShares Core MSCI Emerging Markets	USD	52.23	-1.68%	0.69%	-1.69%	-12.75%	NYSE Arca
▼ iShares JP Morgan Emerging Markets Bonds	USD	57.55	-1.27%	-0.24%	-2.95%	-8.39%	Cboe BZX
▼ Morgan Stanley Emerging Markets Domestic	USD	4.72	-0.42%	0.64%	0.85%	-13.87%	New York



Source: Bloomberg

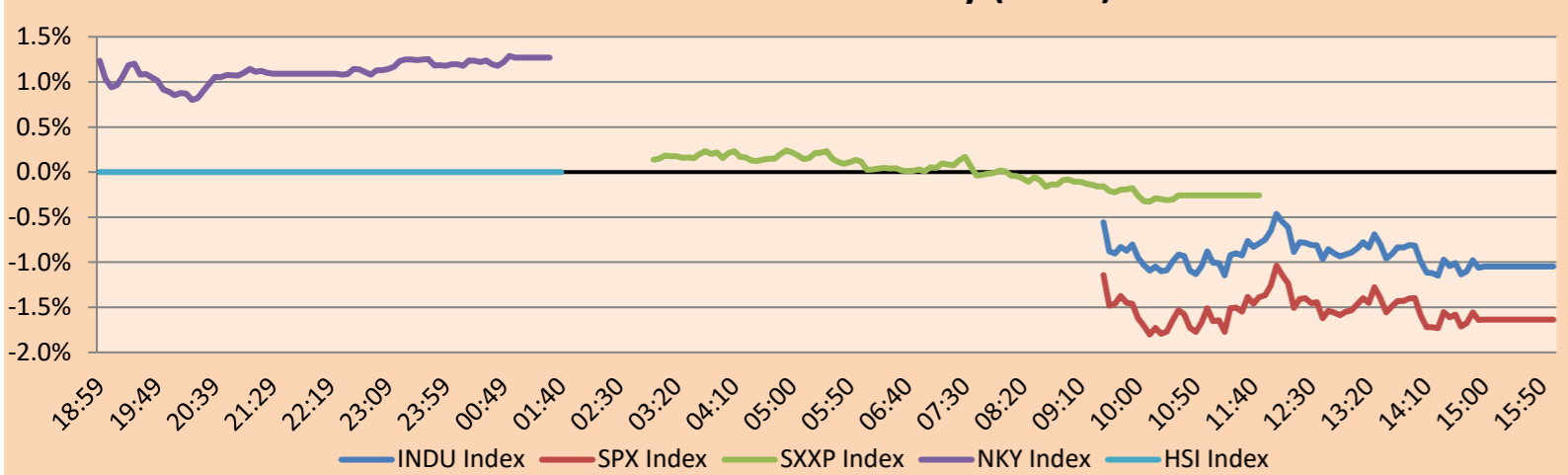


## WORLD

Main Indices	Close	1 D*	5 D*	1 M*	YTD*	Market Cap. (US\$ Mill.)
▼ Dow Jones (USA)	32,899.70	-1.05%	0.80%	-0.69%	-9.46%	10,404,458
▼ Standard & Poor's 500 (EEUU)	4,108.54	-1.63%	1.25%	-1.60%	-13.80%	36,608,727
▼ NASDAQ Composite (USA)	12,012.73	-2.47%	2.32%	-4.39%	-23.22%	20,995,911
▼ Stoxx EUROPE 600 (Europe)	440.09	-0.26%	-0.87%	-1.37%	-9.78%	11,331,790
▼ DAX (Germany)	14,460.09	-0.17%	-0.01%	3.00%	-8.97%	1,396,499
▼ FTSE 100 (United Kingdom)	7,532.95	-0.98%	0.14%	-0.15%	2.01%	1,660,619
▼ CAC 40 (France)	6,485.30	-0.23%	-0.47%	0.14%	-9.33%	1,939,580
▼ IBEX 35 (Spain)	8,724.80	-0.22%	-2.34%	1.57%	0.13%	537,825
▼ MSCI AC Asia Pacific Index	168.07	-0.60%	2.97%	0.10%	-12.97%	22,435,653
▼ HANG SENG (Hong kong)	21,082.13	-1.00%	4.80%	-0.09%	-9.90%	3,345,759
▲ SHANGHAI SE Comp. (China)	3,195.46	0.42%	2.32%	4.87%	-12.21%	6,472,552
▲ NIKKEI 225 (Japan)	27,761.57	1.27%	3.66%	2.81%	-3.58%	3,600,050
▲ S&P / ASX 200 (Australia)	7,238.75	0.88%	0.78%	0.46%	-2.77%	1,735,886
▲ KOSPI (South Korea)	2,670.65	0.44%	2.23%	0.99%	-10.31%	1,634,203

\*Legend: Variation 1D: 1 Day; 5D: 5 Days; 1M: 1 Month; YTD: Var.% 12/31/21 to date

### Mercado Evolución Intraday (var %)

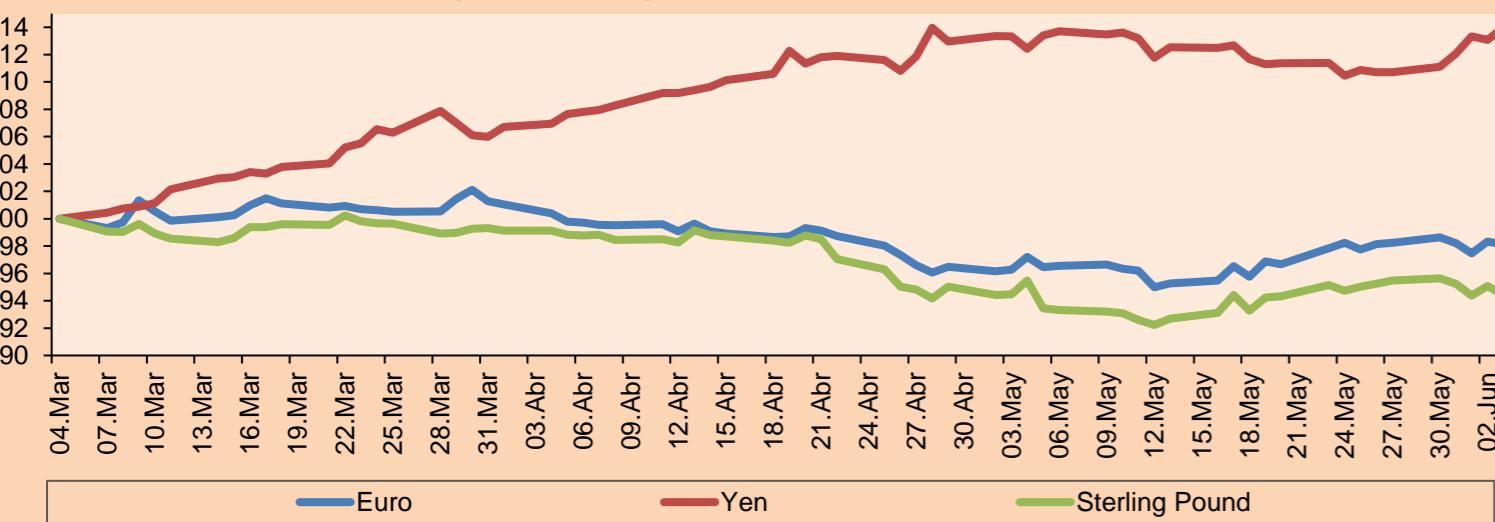


Source: Bloomberg

Currency	Price	1 D*	5 D*	1 M*	YTD*
▼ Euro	1.0719	-0.26%	-0.15%	0.91%	-5.73%
▲ Yen	130.8800	0.80%	2.97%	1.39%	13.73%
▼ Sterling Pound	1.2488	-0.72%	-1.13%	-1.13%	-7.72%
- Yuan	6.6603	0.00%	-0.58%	0.78%	4.79%
▲ Hong Kong Dollar	7.8453	0.01%	-0.05%	-0.04%	0.62%
▼ Brazilian Real	4.7739	-0.49%	0.92%	-2.99%	-14.38%
▲ Argentine Peso	120.6775	0.18%	0.94%	4.02%	17.46%

\*Legend: Variation 1D: 1 Day; 5D: 5 Days; 1M: 1 Month; YTD: Var.% 12/31/21 to date

### Foreign Exchange Indices (3 months)

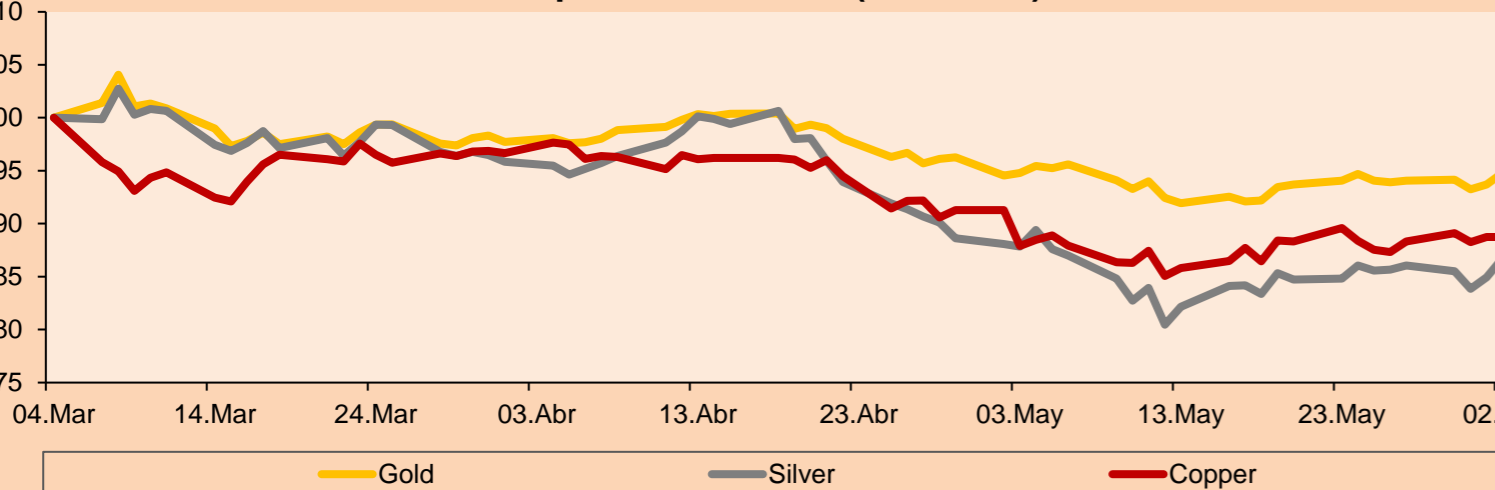


Base: 04/03/22=100  
Source: Bloomberg

Commodities	Close	1 D*	5 D*	1 M*	YTD*
▼ Oro (US\$ Oz. T) (LME)	1,851.19	-0.93%	-0.14%	-1.60%	1.20%
▼ Plata (US\$ Oz. T) (LME)	21.93	-1.71%	-0.85%	-4.59%	-5.93%
- Cobre (US\$ TM) (LME)	9,498.50	0.00%	0.48%	0.32%	-2.49%
- Zinc (US\$ TM) (LME)	3,884.50	0.00%	0.45%	-2.55%	8.20%
▲ Petróleo WTI (US\$ Barril) (NYM)	118.87	1.71%	3.30%	11.91%	63.33%
- Estaño (US\$ TM) (LME)	35,199.00	0.00%	2.45%	-14.05%	-10.60%
- Plomo (US\$ TM) (LME)	2,163.00	0.00%	0.32%	-5.06%	-7.48%
▼ Azúcar #11 (US\$ Libra) (NYB-ICE)	19.29	-0.31%	-1.63%	3.60%	4.89%
▼ Cacao (US\$ TM) (NYB-ICE)	2,469.00	-0.64%	0.28%	-4.30%	-3.67%
▼ Café Arábica (US\$ TM) (NYB-ICE)	232.40	-2.46%	1.29%	5.25%	3.17%

\*Leyenda: Variación 1D: 1 Día; 5D: 5 Días; 1M: 1 Mes; YTD: Var.% 31/12/21 a la fecha

### Principal Metals Index (3 months)



Base: 04/03/22=100  
Source: Bloomberg

## Equity

Germany (Stocks from DAX Index)

Largest gains	Curr.	Price	▲%	Exchange	Largest losses	Curr.	Price	▼%	Exchange
EOAN GY	EUR	9.668	2.11	Xetra	HFG GY	EUR	34.23	-1.84	Xetra
MUV2 GY	EUR	225.8	1.07	Xetra	IFX GY	EUR	29	-1.83	Xetra
LIN GY	EUR	308.7	1.03	Xetra	PAH3 GY	EUR	77.8	-1.74	Xetra
BAYN GY	EUR	66.12	0.93	Xetra	CON GY	EUR	71.48	-1.13	Xetra

Europe (Stocks from STOXX EUROPE 600)

Largest gains	Curr.	Price	▲%	Exchange	Largest losses	Curr.	Price	▼%	Exchange
NETC DC	DKK	425	4.42	Copenhagen	EO FP	EUR	23.78	-6.82	EN Paris
RILBA DC	DKK	858	4.25	Copenhagen	TKWY NA	EUR	19.458	-4.85	EN Amsterdam
GALP PL	EUR	12.15	3.32	EN Lisbon	AMS SE	CHF	11.09	-4.60	SIX Swiss Ex
VER AV	EUR	96.6	2.82	Vienna	PEO PW	PLN	90.74	-4.20	Warsaw

## Global Overview:

### United States:

The US market closes with negative returns after a strong employment report cooled expectations of a possible pause in the Fed's aggressive tightening of monetary policy to curb runaway inflation. The DOW JONES index closed in negative territory after a stronger-than-expected jobs report showed that the nation's economy added 390000 payrolls last month, which was above expectations, while wage growth slowed slightly. The S&P500 index also ended with a negative performance, where the worst performing asset was Tesla(-9.22%), after Elon Musk announced that approximately 10% of salaried jobs would lose their jobs due to a bad feeling about the economic direction of the world's first largest economy, a speech that took investors by surprise since two assembly plants were recently opened and a record volume of global sales was recorded in the most recent quarter on the economy. Finally, the NASDAQ index ended with a significant pullback after Cleveland Fed President Loretta Mester mentioned that they may have to continue raising interest rates at the current pace until September unless there is convincing evidence that inflation has peaked. Thus, DOW JONES -1.05%; S&P 500 -1.63%; NASDAQ -2.47% ended the day mostly negative.

### Europe:

Major European indices ended the session with negative returns as U.S. jobs data supported aggressive Fed policy tightening. An unexpectedly strong monthly report has dampened investors' hopes for a pause in U.S. interest rates in the fall. The pan-European STOXX 600 index ended with losses as investors increased their bets on an ECB rate hike this year. Following record inflation data in the Eurozone, expectations point to as much as a 50 basis point hike at one of the ECB's October meetings. The British market, reflected in the FTSE 100, was not traded this session due to the Queen's Platinum Jubilee, the 70th anniversary of the accession of Queen Elizabeth II, for the first time in the history of the British crown. Meanwhile, the DAX index closed in negative territory as hopes for signs of easing in the current U.S. interest rate cycle failed to materialize following strong U.S. labor market data. The French market fell this session as the Fed believes that, at this point, there was no reason to consider a pause in rate hikes in September as long as inflation remains too high. Thus, FTSE 100 -0.98%; CAC 40 -0.23%; DAX -0.17%; STOXX 600 -0.26% ended at negative levels..

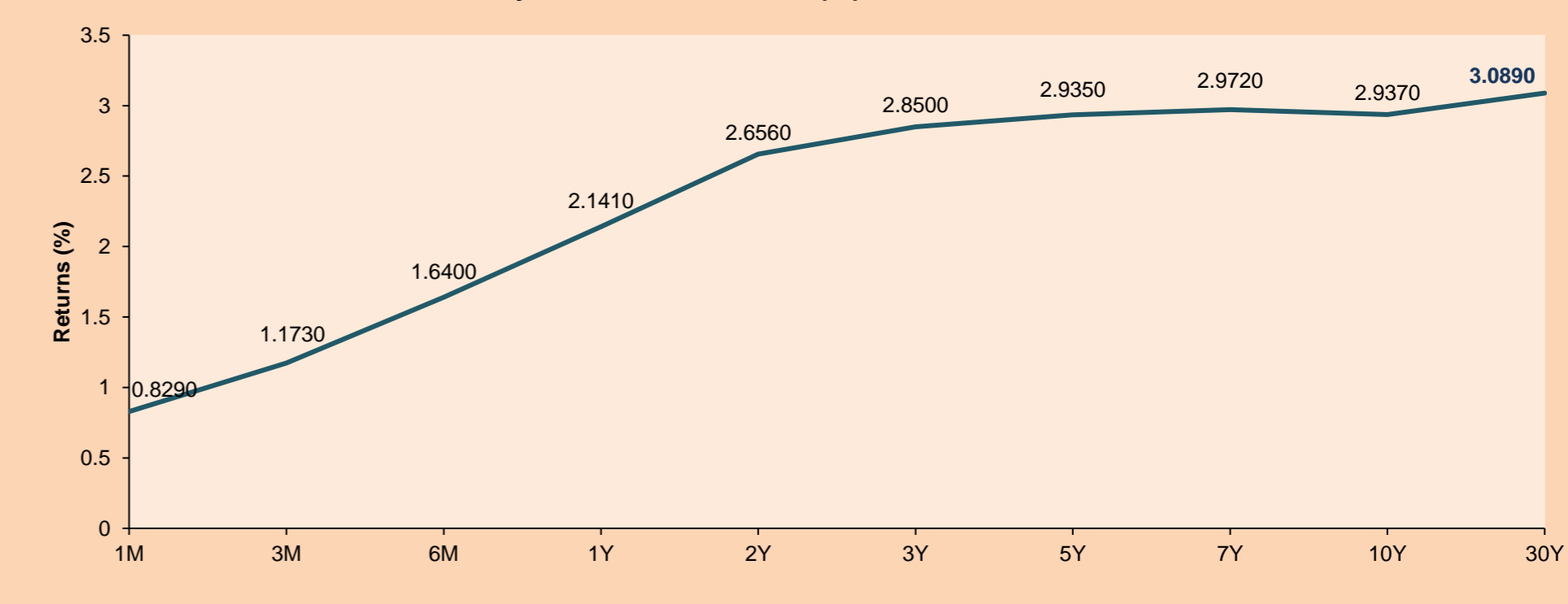
### Asia:

The main Asian indices closed with mostly positive performances. The Chinese market and the Hong Kong market were flat due to the Dragon Boat holiday. The Japanese market closed in positive territory, in a scenario where government bonds are gaining across the curve, as the Bank of Japan's offer to buy super-long bonds is met with reluctance from banks to sell. Also, the BOJ is eyeing a price hike amid a virtuous cycle of improving economic development that includes wage increases. The Australian market ended higher on hopes that U.S. jobs reports may slow the aggressive pace of interest rate hikes; also, the prime minister proposed a minimum wage increase at a rate higher than the inflation rate. On the other hand, South Korea's KOSPI rose this session, even though the consumer price index actually came in at 5.4%, much higher than the previous month. Thus, NIKKEI +1.27%; HANG SENG -1.00%; CSI 300 +0.16%; S&P/ASX 200 +0.88%; KOSPI +0.44%; SHANGAI COMPOSITE +0.42% ended with positive performances.

## ETFs

	Curr.	Close	1D	5D	30 D	YTD	Exchange
SPDR S&P 500 ETF TRUST	USD	410.54	-1.64%	-1.14%	-4.32%	-13.56%	NYSE Arca
ISHARES MSCI EMERGING MARKET	USD	42.37	-1.63%	0.76%	-1.67%	-13.27%	NYSE Arca
ISHARES IBOXX HIGH YLD CORP	USD	78.64	-0.74%	-1.93%	-1.01%	-9.62%	NYSE Arca
FINANCIAL SELECT SECTOR SPDR	USD	34.87	-1.44%	-1.97%	-3.25%	-10.70%	NYSE Arca
VANECK GOLD MINERS ETF	USD	32.56	-2.37%	0.15%	-9.00%	1.65%	NYSE Arca
ISHARES RUSSELL 2000 ETF	USD	187.06	-0.90%	-0.31%	-3.34%	-15.91%	NYSE Arca
SPDR GOLD SHARES	USD	172.58	-1.02%	-0.16%	-1.83%	0.95%	NYSE Arca
ISHARES 20+ YEAR TREASURY BO	USD	116.03	-0.21%	-2.56%	-2.18%	-21.70%	NASDAQ GM
INVESCO QQQ TRUST SERIES 1	USD	306.20	-2.60%	-0.94%	-7.10%	-23.04%	NASDAQ GM
ISHARES BIOTECHNOLOGY ETF	USD	116.50	0.12%	-2.51%	-4.40%	-23.67%	NASDAQ GM
ENERGY SELECT SECTOR SPDR	USD	89.51	1.32%	1.11%	9.49%	61.28%	NYSE Arca
PROSHARES ULTRA VIX ST FUTUR	USD	13.46	1.51%	-5.28%	-4.27%	8.29%	Cboe BZX
UNITED STATES OIL FUND LP	USD	89.47	2.54%	4.69%	11.53%	64.59%	NYSE Arca
ISHARES MSCI BRAZIL ETF	USD	35.24	-0.84%	-1.34%	6.50%	25.54%	NYSE Arca
SPDR S&P OIL & GAS EXP & PR	USD	161.62	1.19%	2.92%	12.40%	68.58%	NYSE Arca
UTILITIES SELECT SECTOR SPDR	USD	74.35	-0.48%	-1.35%	2.72%	3.87%	NYSE Arca
ISHARES US REAL ESTATE ETF	USD	98.35	-1.33%	-2.00%	-5.29%	-15.32%	NYSE Arca
SPDR S&P BIOTECH ETF	USD	71.21	3.55%	0.17%	-9.38%	-36.40%	NYSE Arca
ISHARES IBOXX INVESTMENT GRA	USD	113.19	-0.32%	-1.82%	-0.27%	-14.59%	NYSE Arca
ISHARES JP MORGAN USD EMERGI	USD	91.01	-0.68%	-0.77%	-1.02%	-16.55%	NASDAQ GM
REAL ESTATE SELECT SECT SPDR	USD	43.84	-1.26%	-2.19%	-5.68%	-15.38%	NYSE Arca
ISHARES CHINA LARGE-CAP ETF	USD	31.87	-1.76%	3.01%	0.66%	-12.88%	NYSE Arca
CONSUMER STAPLES SPDR	USD	73.82	-1.01%	-1.57%	-5.50%	-4.27%	NYSE Arca
VANECK JUNIOR GOLD MINERS	USD	40.87	-2.62%	2.51%	-6.99%	-2.53%	NYSE Arca
SPDR BLOOMBERG HIGH YIELD BO	USD	97.37	-0.77%	-1.92%	-1.33%	-10.32%	NYSE Arca
VANGUARD REAL ESTATE ETF	USD	98.27	-1.34%	-2.02%	-5.39%	-15.29%	NYSE Arca
GRAYSCALE BITCOIN TRUST BTC	USD	19.26	-3.46%	1.58%	-30.62%	-43.77%	OTC US

### USA Treasury Bonds Yield Curve (%)



Source: Bloomberg

Capital Market Laboratory Coordinator: MS Javier Penny Pestana

Collaboration: Sebastian Ore, Fabrizio Lavallo, Miguel Solimano y Jhonatan Cueva

email: pulsobursatil@ulima.edu.pe

facebook: www.facebook.com/pulsobursatil.ul



LIMA

Stocks

	Ticker	Currency	Price	1D*	5D*	30D*	YTD*	Frequency	Volume (US\$)	Beta	Dividend Yield (%)	Price Earning	Market Cap. (M US\$)	Economic Sector*	Index Weight
▲	ALICORC1 PE**	S/.	5.15	0.03%	2.31%	-3.76%	-2.85%	100.00%	132,443	0.83	16.21	11.54	1,183.80	Industrial	3.53%
-	ATACOCB1 PE**	S/.	0.10	0.00%	0.00%	-9.09%	-16.67%	20.00%	1,914	1.00	0.00	-	33.51	Mining	1.02%
▼	BACKUS1 PE**	S/.	21.55	-1.60%	0.23%	-6.30%	5.12%	95.00%	39,976	0.79	20.26	7.29	7,943.23	Industrial	0.82%
▼	BAP PE**	US\$	140.24	-1.83%	-1.76%	-1.24%	13.30%	100.00%	106,000	1.33	2.85	-	13,236.18	Diverse	5.82%
▼	BVN PE**	US\$	8.73	-3.00%	-3.43%	-9.16%	19.59%	100.00%	35,442	1.35	0.80	-	2,406.29	Mining	5.88%
▲	CASAGRC1 PE**	S/.	8.00	5.96%	11.11%	-9.09%	-12.09%	85.00%	43,333	1.17	67.52	4.79	181.70	Agricultural	1.31%
-	BBVAC1 PE**	S/.	1.60	0.00%	-1.23%	-9.60%	-11.60%	100.00%	272,559	0.87	7.21	6.09	2,915.72	Finance	2.85%
▲	CORARE1 PE**	S/.	1.46	2.82%	-1.35%	-8.75%	-15.12%	95.00%	18,130	0.76	17.57	2.57	581.05	Industrial	1.72%
▲	CPACASC1 PE**	S/.	3.96	0.25%	-1.00%	-12.39%	-20.00%	100.00%	74,769	0.71	19.95	11.00	495.60	Industrial	2.38%
▼	CVERDEC1 PE**	US\$	29.30	-0.85%	-2.33%	-18.61%	-21.30%	100.00%	19,412	0.86	6.34	7.92	10,256.64	Mining	5.25%
-	ENGEPEC1 PE**	S/.	1.92	0.00%	3.78%	-11.52%	-7.25%	95.00%	25	0.82	0.00	7.16	1,240.19	Public Services	1.44%
-	ENDISPC1**	S/.	3.75	0.00%	1.35%	-5.30%	-6.25%	35.00%	14,216	0.87	0.00	6.73	645.67	Public Services	0.98%
-	FERREYC1 PE**	S/.	2.14	0.00%	-0.47%	-6.55%	4.39%	100.00%	118,581	1.00	11.14	4.09	545.90	Diverse	4.90%
▲	AENZAC1 PE**	S/.	1.03	0.98%	-2.83%	-23.13%	-24.82%	90.00%	33,753	1.06	0.00	-	332.43	Diverse	4.05%
▼	IFS PE**	US\$	27.50	-1.08%	5.57%	2.80%	2.42%	100.00%	25,410	0.97	8.73	-	3,174.00	Diverse	7.22%
-	INRETC1 PE**	US\$	31.00	0.00%	-1.59%	-14.81%	-11.30%	95.00%	1,984	0.69	4.42	20.08	3,371.15	Diverse	5.28%
▲	LUSURC1 PE**	S/.	14.80	2.07%	3.14%	-2.63%	3.93%	55.00%	7,331	0.00	6.89	12.27	1,943.24	Public Services	1.81%
-	MINSUR1 PE**	S/.	4.55	0.00%	-4.41%	-15.74%	15.19%	100.00%	33,769	1.09	7.77	1.74	3,537.00	Mining	3.09%
▲	PML PE**	US\$	0.13	18.18%	0.00%	0.00%	8.33%	15.00%	8,186	1.12	0.00	-	34.37	Mining	2.12%
▼	SCCO PE**	US\$	63.63	-0.59%	2.46%	0.63%	2.99%	100.00%	103,497	0.97	6.52	13.64	49,191.72	Industrial	2.12%
-	SIDERC1 PE**	S/.	1.47	0.00%	-0.68%	-2.00%	-8.13%	75.00%	2,252	0.70	0.00	3.45	277.46	Mining	2.14%
▼	TV PE**	US\$	0.51	-7.27%	-1.92%	-32.00%	-60.77%	95.00%	12,510	1.22	0.00	-	50.46	Industrial	1.43%
▲	UNACEMC1 PE**	S/.	1.62	1.25%	2.53%	-16.92%	-32.50%	85.00%	60,726	1.07	6.79	-	794.18	Mining	2.93%
▼	VOLCABC1 PE**	S/.	0.60	-1.64%	-4.76%	-29.41%	0.00%	100.00%	62,243	1.13	0.00	8.29	659.52	Industrial	3.00%
-	BROCALC1 PE**	S/.	6.99	0.00%	-0.14%	-6.80%	34.42%	5.00%	2,262	0.00	0.00	52.91	306.27	Mining	5.90%
-	RIMSEGC1 PE**	S/.	0.80	0.00%	0.00%	0.00%	-6.98%	5.00%	2,402	0.00	0.00	11.82	356.31	Finance	3.09%
-	CORAREC1 PE**	US\$	2.12	0.00%	-0.47%	-5.78%	11.58%	45.00%	16,877	0.00	0.00	3.73	2,154.93	Mining	2.12%
-	ENGIEC1 PE**	S/.	5.68	0.00%	0.00%	-7.94%	-3.07%	25.00%	31	0.53	0.00	15.80	921.02	Diversas	2.12%
-	GBVLAC1 PE**	S/.	2.42	0.00%	0.00%	-3.97%	-11.03%	30.00%	10,477	0.00	0.00	25.15	118.82	Diversas	2.14%

Quantity of shares: 29  
Source: Bloomberg, Economática  
\* Bloomberg Industry Classification System  
\*\* PER is used in the stock market and original currency of the instrument

Up 8  
Down 8  
Hold 13

\*Legend: Variation 1D: 1 Day; 5D: 5 Days, 1M: 1 Month; YTD: Var.% 12/31/21 to date

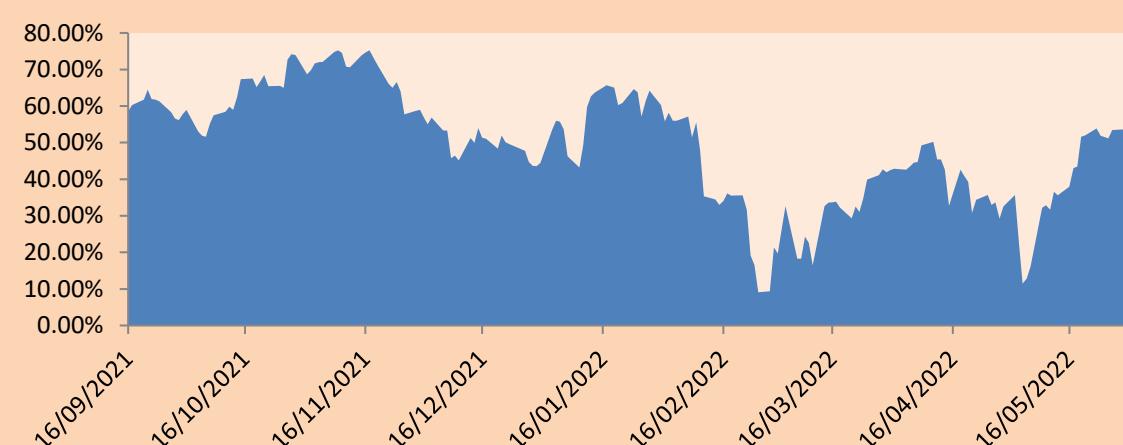
Sectorial Indices

		Close	1D*	5D*	30D*	YTD*	Beta
▼	S&P/BVLMining	406.39	-1.00%	1.03%	-6.26%	-1.27%	1.01
▲	S&P/BVLConsumer	1,054.56	0.07%	1.04%	-8.03%	-8.14%	0.50
▲	S&P/BVLIndustrials	230.50	0.54%	-0.06%	-11.34%	-10.68%	0.79
▼	S&P/BVLFinancials	971.02	-1.60%	-0.12%	-0.08%	7.16%	1.37
▲	S&P/BVLConstruction	232.12	0.79%	0.12%	-13.36%	-18.09%	0.71
-	S&P/BVLPublicSvcs	537.99	0.00%	1.34%	-7.50%	-1.92%	0.12
-	S&P/BVLElectricUtil	525.22	0.00%	1.34%	-7.50%	-1.91%	0.12

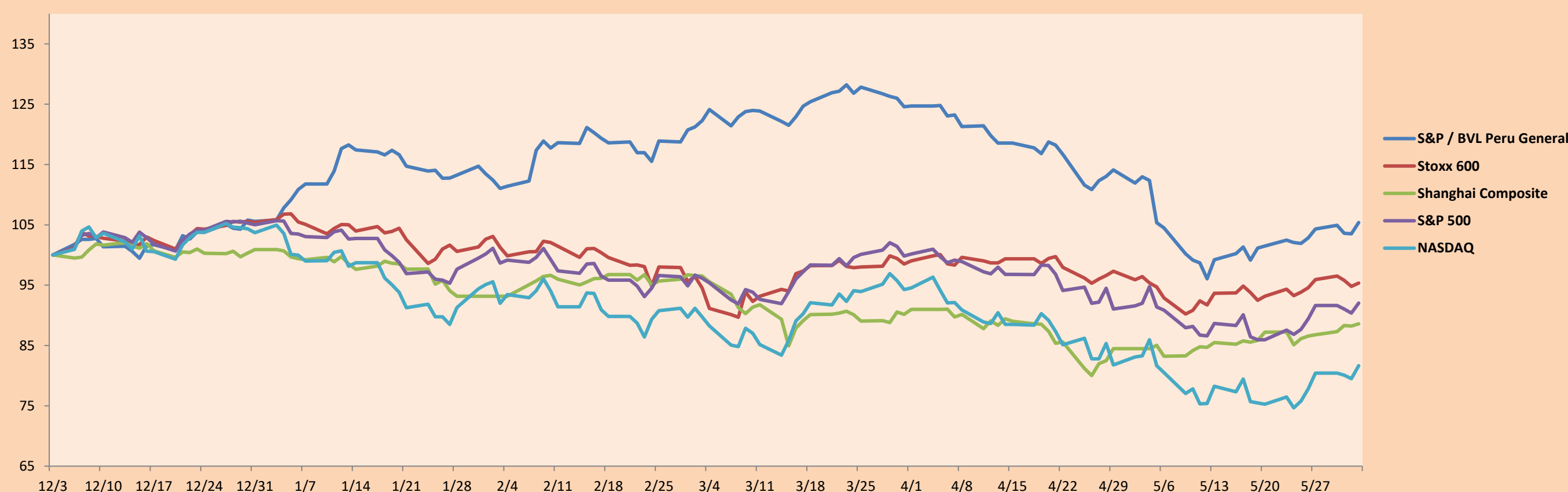
S&P/BVLConstructionTRPEN

\*Legend: Variation 1D: 1 Day; 5D: 5 Days, 1M: 1 Month; YTD: Var.% 12/31/21 to date

Correlation Graph of Returns of Mining Index against Metallic Index of London (3 months)



Indices (6 months)



Base: 03/12/21=100  
Source: Bloomberg

Capital Market Laboratory Coordinator: MS Javier Penny Pestana  
Collaboration: Sebastian Ore, Fabrizio Lavalle, Miguel Solimano y Jhonatan Cueva  
email: pulsobursatil@ulima.edu.pe  
facebook: www.facebook.com/pulsobursatil.ul

## SOVEREIGN RATING

### RISK RATINGS

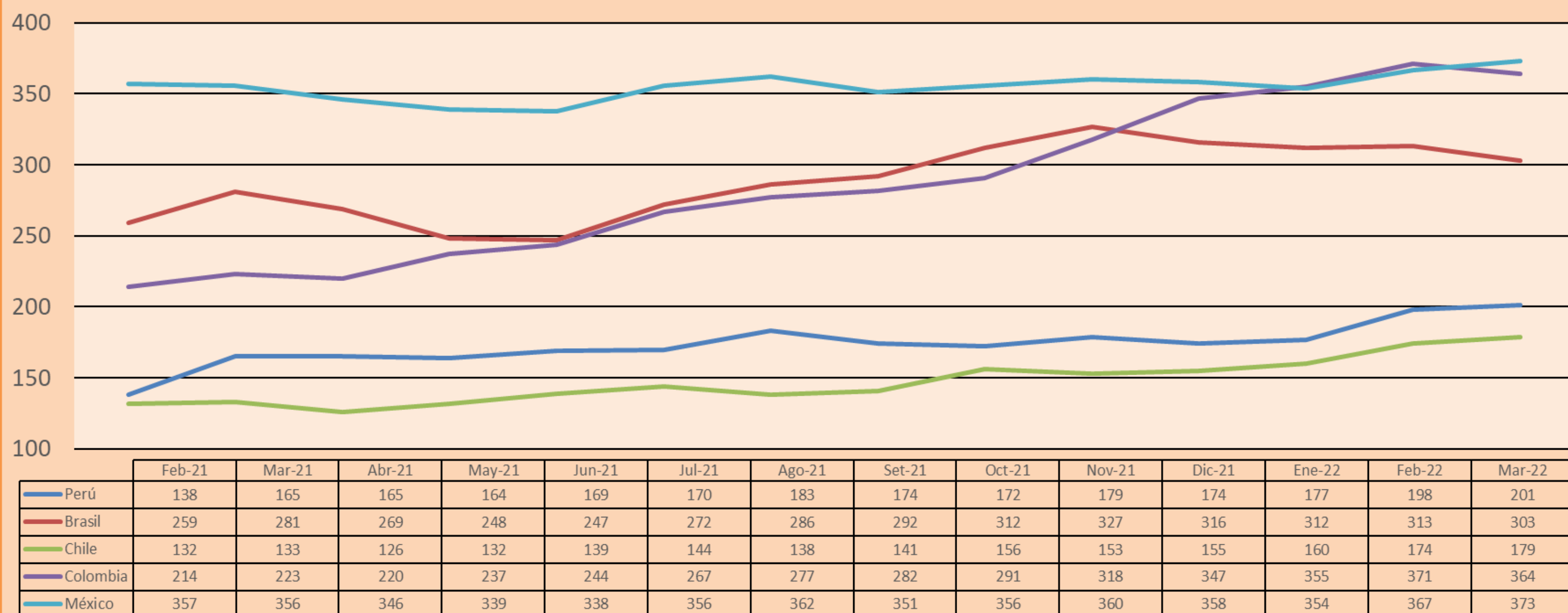
Moody's	S&P	Fitch	
Aaa	AAA	AAA	Prime
Aa1	AA+	AA+	High credit quality
Aa2	AA	AA	
Aa3	AA-	AA-	
A1	A+	A+	Medium-high grade, with low credit risk
A2	A	A	
A3	A-	A-	
Baa1	BBB+	BBB+	Moderate Credit Risk
Baa2	BBB	BBB	
Baa3	BBB-	BBB-	
Ba1	BB+	BB+	It has speculative elements and it is subject to substantial credit risk
Ba2	BB	BB	
Ba3	BB-	BB-	
B1	B+	B+	It is considered speculative and it has high credit risk
B2	B	B	
B3	B-	B-	
Caa1	CCC+	CCC	
Caa2	CCC	CCC	
Caa3	CCC-	CCC	
Ca	CC	CCC	Very close to default or in default
	C	DD	
C	D	D	

Source: Bloomberg

Latin America Credit Rating			
Clasificadora de riesgo			
Country	Moody's	Fitch	S&P
Peru	Baa1	BBB	BBB
México	Ba2	BB-	BB-
Venezuela	C	WD	NR
Brazil	Ba2	BB-	BB-
Colombia	Baa2	BB+	BB+
Chile	A1	A-	A
Argentine	Ca	WD	CCC+
Panama	Baa2	BBB-	BBB

Source: Bloomberg

## LATAM Country Risk(bps)



Source: BCRP

Capital Market Laboratory Coordinator: MS Javier Penny Pestana  
Collaboration: Sebastian Ore, Fabrizio Lavalle, Miguel Solimano y Jhonatan Cueva  
email: pulsobursatil@ulima.edu.pe  
facebook: www.facebook.com/pulsobursatil.ul