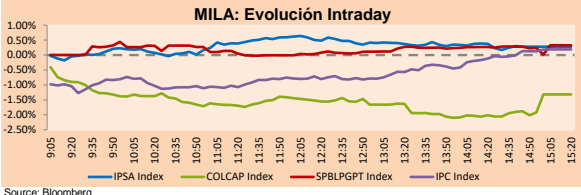


MILA

Lima, June 7, 2022

Main Indexes	Close	1 D	5 D	1 M	YTD	Cap. Burs. (US\$ bill)
▲ IPSA (Chile)	5,358.95	0.49%	0.16%	10.76%	24.38%	113.09
▲ IGPA (Chile)	28,185.99	0.20%	-0.07%	13.27%	30.69%	130.84
▼ COLCAP (Colombia)	935.25	-1.10%	-1.34%	-4.09%	-3.89%	6.44
▼ COLCAP (Colombia)	1,587.07	-1.31%	-1.01%	1.99%	12.48%	92.79
▲ S&P/BVL (Perú)*	20,620.52	0.33%	-0.48%	-1.33%	-2.33%	97.00
▲ S&P/BVL SEL (Perú)	540.36	0.30%	0.20%	-0.70%	-4.12%	88.08
▲ S&P/BVL LIMA 25	28,450.52	0.15%	-0.39%	-3.91%	-6.02%	96.18
▲ IPC (México)	50,139.20	0.14%	-3.12%	1.21%	-5.88%	324.03
▼ S&P MILA 40	539.54	-0.60%	-0.81%	9.05%	21.29%	6,347.14

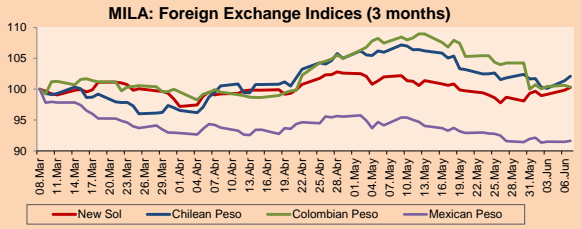
*Legend: Variation 1D: 1 day; 5D: 5 days; 1M: 1 Month; YTD: Var% 12/31/21 to date



Source: Bloomberg

Currency	Price	1D*	5D*	30 D*	YTD*
▲ Sol (PEN)	3,7502	0.44%	0.97%	-1.67%	-6.22%
▲ Chilean Peso (CLP)	827.40	0.71%	0.43%	-3.68%	-2.89%
▼ Colombian Peso (COP)	3,784.80	-0.28%	0.34%	-6.64%	-7.24%
▲ Mexican Peso (MXN)	19.59	0.18%	-0.35%	-2.67%	-4.58%

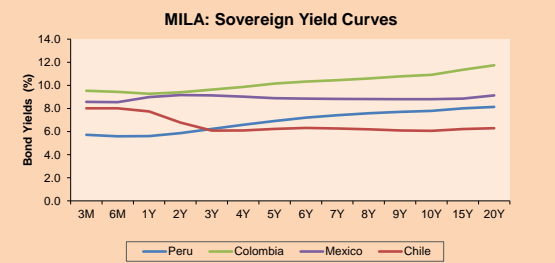
*Legend: Variation 1D: 1 day; 5D: 5 days; 1M: 1 Month; YTD: Var% 12/31/21 to date



Base: 08/03/22=100

Source: Bloomberg

Fixed Income	Currency	Price	Bid Yield (%)	Ask Yield (%)	Duration
PERU 7.35 07/21/25	USD	109.731	4.08	3.92	2.74
PERU 4.125 08/25/27	USD	99.705	4.24	4.14	4.61
PERU 8.75 11/21/33	USD	131.339	5.15	5.06	7.79
PERU 6.55 03/14/37	USD	113.374	5.28	5.20	9.24
PERU 5.625 11/18/2050	USD	109.301	5.03	4.99	14.58
CHILE 2.25 10/30/22	USD	100.195	2.28	1.21	0.39
CHILE 3.125 01/21/26	USD	98.93	3.49	3.39	3.37
CHILE 3.625 10/30/42	USD	83.445	4.96	4.88	13.72
COLOM 11.85 03/09/28	USD	141.561	3.85	3.65	4.41
COLOM 10.375 01/28/33	USD	129.813	6.57	6.34	6.79
COLOM 7.375 09/18/37	USD	103.023	7.10	6.99	9.08
COLOM 6.125 01/18/41	USD	89.294	7.21	7.14	10.35
MEX 4 10/02/23	USD	89.294	7.214	7.137	10.35
MEX5.55 01/45	USD	96.502	5.85	5.81	12.36



Source: Bloomberg

Equity

Largest gains	Exchange	Currency	Price	▲ %
AGUAS ANDINAS-A	Chile	CLP	169.00	3.51
ISA SA	Colombia	COP	22430.00	3.13
BANCO DE CHILE	Chile	CLP	86.98	2.92
BOLSA MEXICANA	Mexico	MXN	37.65	2.64
ORBIA ADVANCE CO	Mexico	MXN	53.23	2.54

Largest losses	Exchange	Currency	Price	▼ %
SURAMERICANA	Colombia	COP	45630	-21.03
INDUSTRIAS PENOL	Mexico	MXN	206.41	-2.71
PROMOTORA Y OPEF	Mexico	MXN	139.13	-1.51
GRUPO AEROPORTU	Mexico	MXN	142.95	-1.45
BUENAVENTURA-ADI	Peru	USD	8.26	-1.43

Per Turnover

	Exchange	Amount (US\$)
SOQUIMICH-B	Chile	98,141,213
AMERICA MOVIL-L	Mexico	61,069,465
AERO DEL SURES-B	Mexico	49,020,711
GRUPO F BANORT-O	Mexico	47,375,862
WALMART DE MEXIC	Mexico	44,189,394

Per Volume

	Exchange	Volume
ITAU CORPBANCA	Chile	1,025,208,256
ENEL CHILE SA	Chile	233,667,058
BANCO SANTANDER	Chile	218,191,408
ENEL AMERICAS SA	Chile	79,285,336
BANCO DE CHILE	Chile	64,528,618

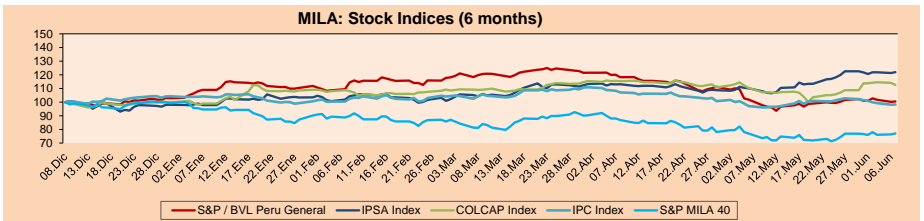
MILA

Peru: The BVL General Index ended today's session with a positive result of +0.33%. The index maintains a negative annual cumulative trend of -2.33% in local currency, while the dollar-adjusted performance amounted to +4.16%. Then, the S&P/BVL Peru SEL varied by +0.30% while the S&P/BVL LIMA 25 by +0.15%. The spot PEN reached S/. 3.7505. Headline: Reactiva Peru only reached 16.6% of SMEs.

Chile: The IPSA index ended the day with a positive return of +0.49%. The most benefited sectors of the day were Energy (+1.52%) and Financials (+1.35%). The best performing stocks were Aguas Andinas SA (3.51%) and Banco de Chile (+2.92%). Headline: World Bank again projects Chile's growth deceleration in both 2022 and 2023.

Colombia: The COLCAP index ended the session with a negative return of -1.31%. The worst performing sectors of the day were Financials (-3.14%) and Consumer Discretionary (-2.10%). The worst performing stocks were Grupo de Inversiones Suramericana (-3.76%) and Promigas SA (-3.38%). Headline: May 2022 registered record figures in housing sales for the Colombia.

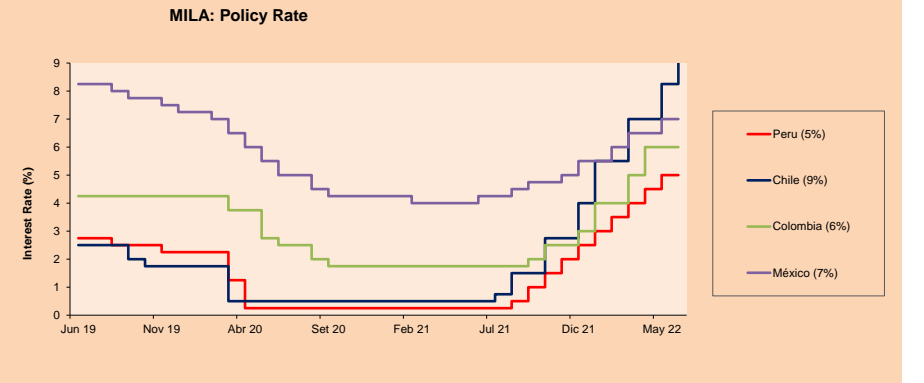
Mexico: The IPC index closed the day in positive territory of +0.14%. The best performing sectors of the day were Health Care (+1.82%) and Materials (+1.26%). The best performing stocks were Bolsa Mexicana de Valores SAB de CV (+2.64%) and Mexichem SAB de CV (+2.54%). Headline: World Bank cuts its growth forecast for Mexico from 2.1% to 1.7% in 2022.



Base: 09/12/21=100

Source: Bloomberg

ETFs	Curr.	Close	1D	5D	30 D	YTD	Exchange
▲ iShares MSCI All Peru Caped Index Fund	USD	31.1875	0.64%	0.73%	4.48%	5.29%	NYSE Arca
▼ iShares MSCI All Chile Caped Index Fund	USD	30.19	-0.53%	-0.63%	16.47%	30.75%	Cboe BZX
▲ Global X MSCI Colombia	USD	11.9379	-1.50%	-0.89%	7.55%	19.46%	NYSE Arca
▲ iShares MSCI Mexico Capped	USD	50.67	0.36%	-2.69%	4.63%	0.14%	NYSE Arca
▲ iShares MSCI Emerging Markets	USD	42.73	0.31%	0.21%	4.40%	-12.53%	NYSE Arca
▲ Vanquard FTSE Emerging Markets	USD	43.9	0.50%	0.60%	4.70%	-11.24%	NYSE Arca
▲ iShares Core MSCI Emerging Markets	USD	52.64	0.36%	0.13%	4.07%	-12.06%	NYSE Arca
▲ iShares JP Morgan Emerging Markets Bonds	USD	57.68	0.14%	-0.91%	0.44%	-8.18%	Cboe BZX
▲ Morgan Stanley Emerging Markets Domestic	USD	4.7	0.43%	0.64%	3.98%	-14.23%	New York



Source: Bloomberg

LIMA

Stocks

Ticker	Currency	Price	1D*	5D*	30D*	YTD*	Frequency	Volume (US\$)	Beta	Dividend Yield (%)	Price Earning	Market Cap. (M US\$)	Economic Sector*	Index Weight
▼ ALICORC1 PE**	S/.	5.15	-1.10%	-1.34%	-4.09%	-3.89%	100.00%	9,438	0.84	16.21	11.54	1,170.70	Industrial	3.53%
- ATACOBC1 PE**	S/.	0.10	0.00%	0.00%	0.00%	-16.67%	20.00%	1,384	1.01	0.00	-	33.14	Mining	1.02%
▲ BACKUSI1 PE**	S/.	21.90	1.39%	0.92%	-4.74%	6.83%	100.00%	27,179	0.79	19.93	7.41	7,903.35	Industrial	0.82%
▲ BAP PE**	US\$	136.23	-0.16%	-3.44%	2.37%	10.06%	100.00%	144,782	1.34	2.94	-	12,857.70	Diverse	5.82%
▼ BVN PE**	US\$	8.26	-1.43%	-4.95%	-2.48%	13.15%	100.00%	65,915	1.36	0.85	-	2,276.74	Mining	5.88%
- CASAGRC1 PE**	S/.	7.54	0.00%	7.71%	1.21%	-17.14%	85.00%	32,122	1.18	71.64	4.51	169.36	Agricultural	1.31%
▲ BVVAC1 PE**	S/.	1.67	1.83%	10.60%	4.38%	-7.73%	100.00%	15,922	0.86	6.91	6.36	3,009.61	Finance	2.85%
- CORAREI1 PE**	S/.	1.41	0.00%	-0.70%	-2.76%	-18.02%	80.00%	1,839	0.78	18.20	2.48	586.44	Industrial	1.72%
- CPACASC1 PE**	S/.	3.85	0.00%	0.00%	-4.47%	-22.22%	100.00%	6,517	0.72	20.52	10.69	472.74	Industrial	2.38%
▼ CVERDEC1 PE**	US\$	28.40	-0.53%	-4.70%	-13.41%	-23.72%	100.00%	336,273	0.87	6.54	7.68	9,941.59	Mining	5.25%
- ENGEPEC1 PE**	S/.	1.92	0.00%	-0.52%	1.05%	-7.25%	95.00%	4,759	0.82	16.34	7.16	1,226.47	Public Services	1.44%
- ENDISPC1**	S/.	3.75	0.00%	0.00%	0.00%	-6.25%	20.00%	14,058	0.87	0.00	6.73	638.53	Public Services	0.98%
▼ FERREYC1 PE**	S/.	2.12	-0.47%	0.47%	6.00%	3.41%	100.00%	23,717	0.97	11.25	4.06	534.81	Diverse	4.90%
▲ AENZAC1 PE**	S/.	1.02	0.99%	0.00%	-12.82%	-25.55%	100.00%	16,865	1.00	0.00	-	325.56	Diverse	4.05%
- IFS PE**	US\$	26.65	0.00%	1.10%	8.33%	-0.74%	85.00%	51,382	0.98	0.00	-	3,075.89	Diverse	7.22%
▲ INRETC1 PE**	US\$	29.60	1.02%	-1.60%	-12.94%	-15.31%	90.00%	119,373	0.71	4.63	19.37	3,218.91	Diverse	5.28%
▼ LUSURC1 PE**	S/.	14.60	-1.35%	0.69%	-3.95%	2.53%	60.00%	3,079	0.00	6.99	12.10	1,895.76	Public Services	1.81%
▼ MINSUR1 PE**	S/.	4.45	-1.11%	-6.32%	-10.10%	12.66%	95.00%	10,679	1.09	7.94	1.68	3,420.98	Mining	3.09%
- PML PE**	US\$	0.13	0.00%	0.00%	0.00%	8.33%	25.00%	8,186	1.14	0.00	-	34.37	Mining	2.12%
▲ SCCO PE**	US\$	64.70	1.65%	4.73%	4.68%	4.73%	95.00%	455,886	0.95	6.41	13.87	50,018.93	Industrial	2.12%
▼ SIDERC1 PE**	S/.	1.40	-4.76%	-2.78%	0.00%	-12.50%	65.00%	7,622	0.70	44.78	3.29	261.32	Mining	2.14%
- TV PE**	US\$	0.50	0.00%	-10.71%	-27.54%	-61.54%	90.00%	14,110	1.26	0.00	-	49.47	Industrial	1.43%
- UNACEMC1 PE**	S/.	1.56	0.00%	-1.27%	-5.45%	-35.00%	80.00%	125,378	1.07	0.00	-	756.30	Mining	2.93%
- VOLCABC1 PE**	S/.	0.60	0.00%	0.00%	-14.29%	0.00%	100.00%	1,705,066	1.13	0.00	8.20	652.22	Industrial	3.00%
- BROCALC1 PE**	S/.	6.99	0.00%	0.00%	-6.80%	34.42%	10.00%	18	0.00	0.00	52.37	302.88	Mining	5.90%
- RIMSEGC1 PE**	S/.	0.80	0.00%	0.00%	0.00%	-6.98%	5.00%	2,375	0.00	0.00	11.82	352.37	Finance	3.09%
- CORAREC1 PE**	US\$	2.18	0.00%	2.83%	-0.91%	14.74%	40.00%	113,936	0.00	11.77	3.84	2,199.27	Mining	2.12%
- ENGIEC1 PE**	S/.	5.68	0.00%	0.00%	-5.80%	-3.07%	25.00%	1,969	0.53	4.42	15.64	910.83	Diversas	2.12%
- GBVLAC1 PE**	S/.	2.42	0.00%	0.00%	-3.97%	-11.03%	20.00%	10,361	0.00	0.00	25.15	117.50	Diversas	2.14%

Quantity of shares: 29
 Source: Bloomberg, Económica
 * Bloomberg Industry Classification System
 ** PER is used in the stock market and original currency of the instrument
 *Legend: Variation 1D: 1 Day; 5D: 5 Days, 1M: 1 Month; YTD: Var.% 12/31/21 to date

Up 5
 Down 8
 Hold 16

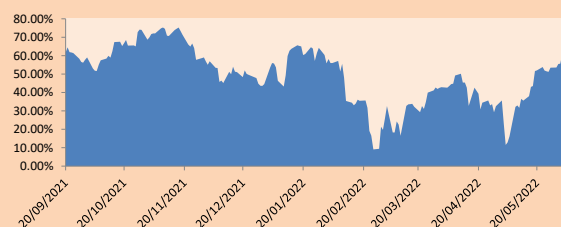
Sectorial Indices

	Close	1D*	5D*	30D*	YTD*	Beta
▲ S&P/BVLMining	408.77	0.94%	2.02%	-0.51%	-0.69%	1.00
▲ S&P/BVLConsumer	1,039.61	1.06%	0.81%	-5.50%	-9.44%	0.51
▲ S&P/BVLIndustrials	228.46	0.48%	0.81%	-0.74%	-11.47%	0.76
▲ S&P/BVLFinancials	955.32	0.22%	-1.74%	3.89%	5.43%	1.38
▲ S&P/BVLConstruction	230.13	0.93%	0.97%	-3.53%	-18.79%	0.68
- S&P/BVLPublicSvcs	537.99	0.00%	-0.16%	-1.68%	-1.92%	0.10
- S&P/BVLElectricUtil	525.22	0.00%	-0.16%	-1.68%	-1.91%	0.10

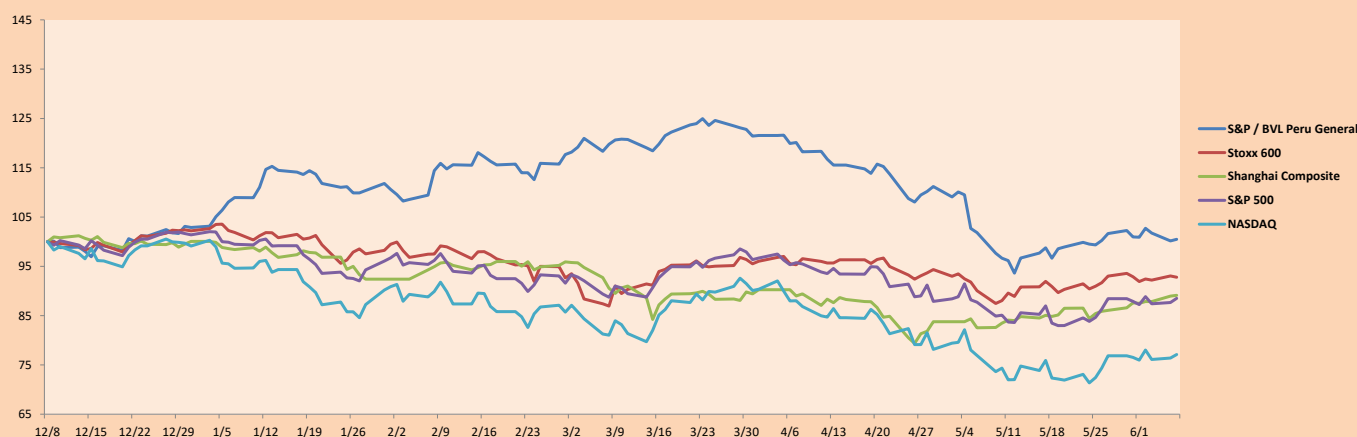
S&P/BVLConstructionTRPEN

*Legend: Variation 1D: 1 Day; 5D: 5 Days, 1M: 1 Month; YTD: Var.% 12/31/21 to date

Correlation Graph of Returns of Mining Index against Metallic Index of London (3 months)



Indices (6 months)



Base: 08/12/21=100
 Source: Bloomberg

Capital Market Laboratory Coordinator: MS Javier Penny Pestana
 Collaboration: Sebastian Ore, Fabrizio Lavalle, Miguel Solimano y Jhonatan Cueva
 email: pulsobursatil@ulima.edu.pe
 facebook: www.facebook.com/pulsobursatil.ul

SOVEREIGN RATING

RISK RATINGS

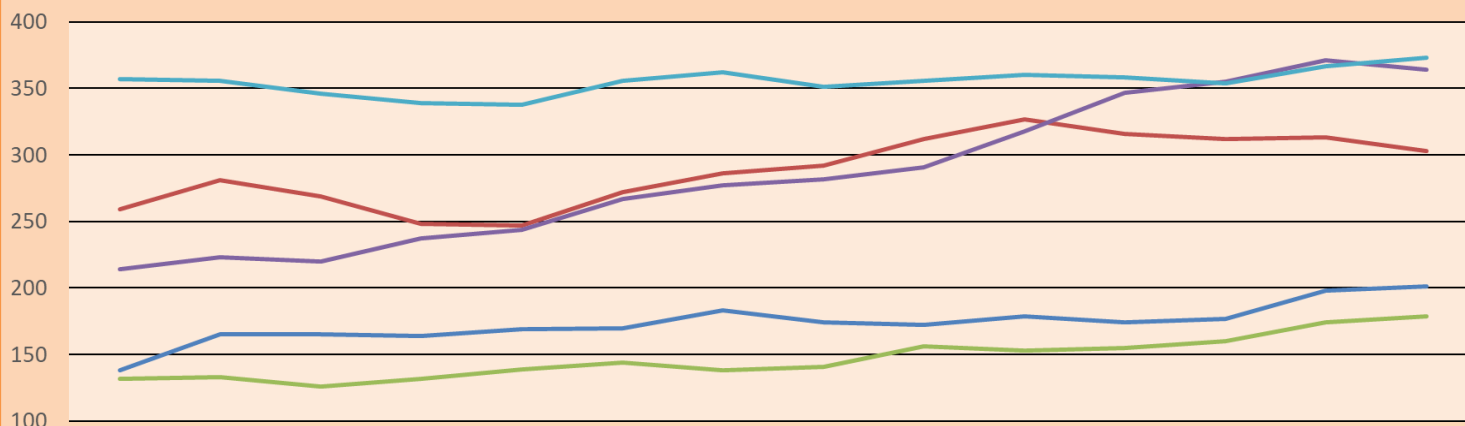
Moody's	S&P	Fitch	
Aaa	AAA	AAA	Prime
Aa1	AA+	AA+	High credit quality
Aa2	AA	AA	
Aa3	AA-	AA-	
A1	A+	A+	Medium-high grade, with low credit risk
A2	A	A	
A3	A-	A-	
Baa1	BBB+	BBB+	Moderate Credit Risk
Baa2	BBB	BBB	
Baa3	BBB-	BBB-	
Ba1	BB+	BB+	It has speculative elements and it is subject to substantial credit risk
Ba2	BB	BB	
Ba3	BB-	BB-	
B1	B+	B+	It is considered speculative and it has high credit risk
B2	B	B	
B3	B-	B-	
Caa1	CCC+		Bad credit conditions and it is subject to high credit risk
Caa2	CCC		
Caa3	CCC-	CCC	
Ca	C		Very close to default or in default
		DDD	
C	D	DD D	

Source: Bloomberg

Latin America Credit Rating			
Clasificadora de riesgo			
Country	Moody's	Fitch	S&P
Peru	Baa1	BBB	BBB
México	Ba2	BB-	BB-
Venezuela	C	WD	NR
Brazil	Ba2	BB-	BB-
Colombia	Baa2	BB+	BB+
Chile	A1	A-	A
Argentine	Ca	WD	CCC+
Panama	Baa2	BBB-	BBB

Source: Bloomberg

LATAM Country Risk(bps)



	Feb-21	Mar-21	Abr-21	May-21	Jun-21	Jul-21	Ago-21	Set-21	Oct-21	Nov-21	Dic-21	Ene-22	Feb-22	Mar-22
Perú	138	165	165	164	169	170	183	174	172	179	174	177	198	201
Brasil	259	281	269	248	247	272	286	292	312	327	316	312	313	303
Chile	132	133	126	132	139	144	138	141	156	153	155	160	174	179
Colombia	214	223	220	237	244	267	277	282	291	318	347	355	371	364
México	357	356	346	339	338	356	362	351	356	360	358	354	367	373

Source: BCRP

Capital Market Laboratory Coordinator: MS Javier Penny Pestana
Collaboration: Sebastian Ore, Fabrizio Lavalle, Miguel Solimano y Jhonatan Cueva
email: pulsobursatil@ulima.edu.pe
facebook: www.facebook.com/pulsobursatil.ul