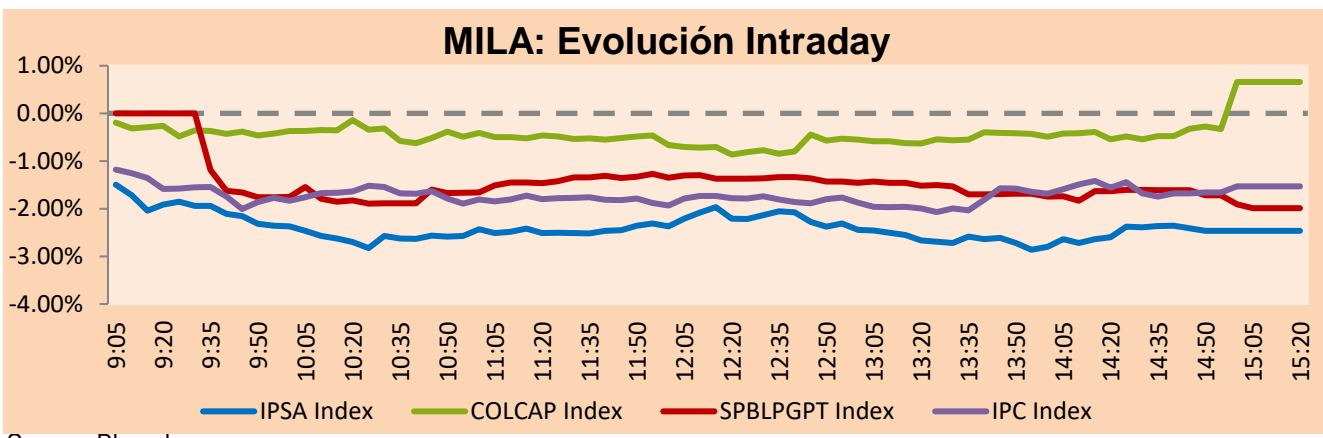


## MILA

Lima, June 16, 2022

Main Indexes	Close	1 D	5 D	1 M	YTD	Cap. Burs. (US\$ bill)
▼ IPSA (Chile)	5,029.48	-2.14%	-2.99%	0.12%	16.74%	103.39
▼ IGPA (Chile)	26,390.78	-2.59%	-3.12%	0.76%	22.37%	117.65
▲ COLSC (Colombia)	901.38	0.08%	-2.05%	-5.50%	-7.37%	6.05
▲ COLCAP (Colombia)	1,473.19	0.66%	-3.51%	-2.20%	4.41%	80.29
▼ S&P/BVL (Perú)*	19,391.21	-1.99%	-4.81%	-4.32%	-8.15%	88.31
▼ S&P/BVL SEL (Perú)	514.18	-1.41%	-3.96%	-2.46%	-8.76%	79.05
▼ S&P/BVL LIMA 25	27,895.71	-1.15%	-2.57%	-1.53%	-7.86%	87.48
▼ IPC (México)	47,558.51	-1.63%	-3.51%	-7.59%	-10.73%	301.57
▼ S&P MILA 40	483.58	-1.77%	-6.36%	-2.60%	8.71%	6,154.55

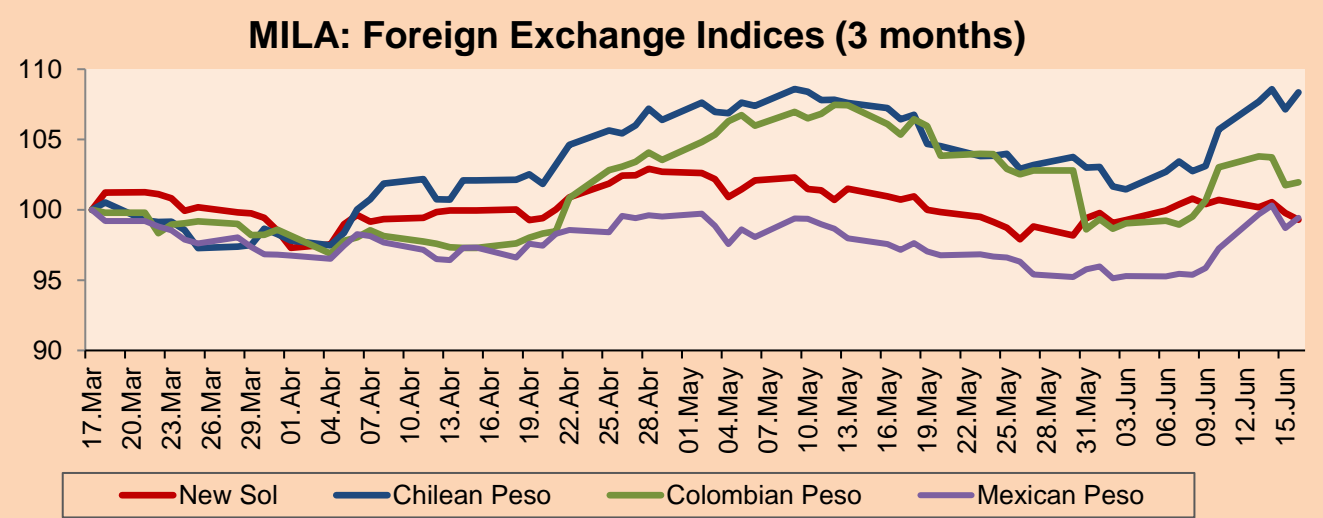
\*Legend: Variation 1D: 1 day; 5D: 5 days; 1M: 1 Month; YTD: Var% 12/31/21 to date



Source: Bloomberg

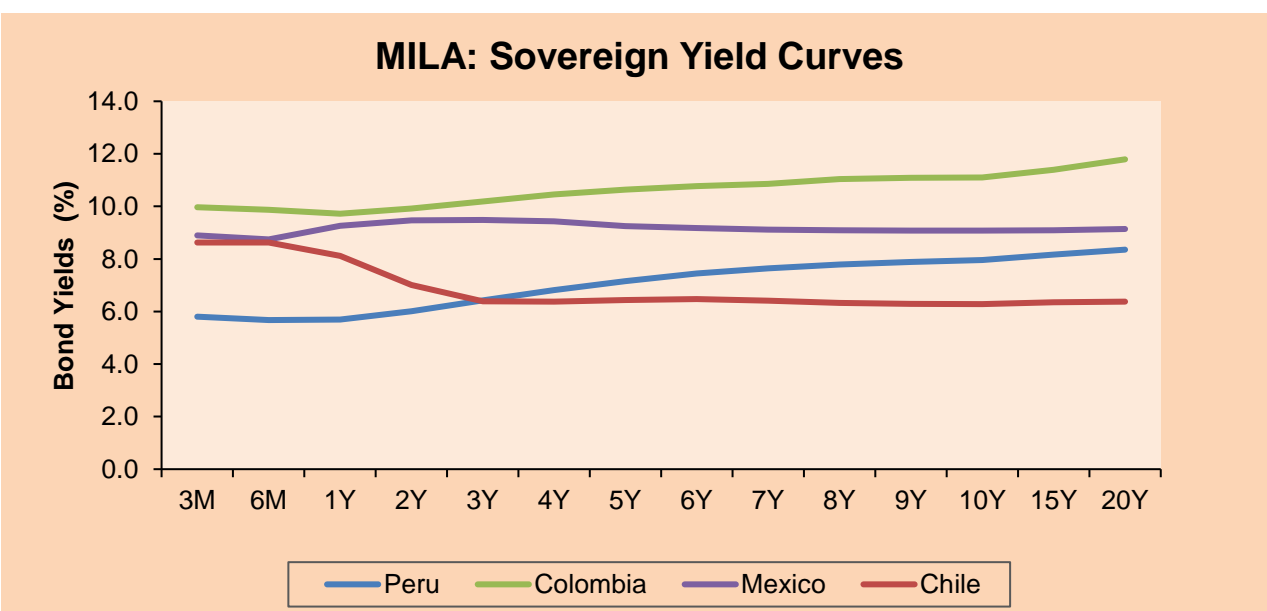
Currency	Price	1D*	5D*	30 D*	YTD*
▼ Sol (PEN)	3,7095	-0.49%	-1.12%	-1.42%	-7.24%
▲ Chilean Peso (CLP)	866.58	1.12%	5.07%	1.79%	1.71%
▲ Colombian Peso (COP)	3,900.17	0.20%	1.29%	-3.21%	-4.42%
▲ Mexican Peso (MXN)	20.41	0.75%	3.74%	2.35%	-0.59%

\*Legend: Variation 1D: 1 day; 5D: 5 days; 1M: 1 Month; YTD: Var% 12/31/21 to date



Base: 17/03/22=100  
Source: Bloomberg

Fixed Income	Currency	Price	Bid Yield (%)	Ask Yield (%)	Duration
PERU 7.35 07/21/25	USD	108.133	4.57	4.42	2.71
PERU 4.125 08/25/27	USD	97.716	4.67	4.58	4.56
PERU 8.75 11/21/33	USD	126.942	5.56	5.51	7.68
PERU 6.55 03/14/37	USD	108.457	5.71	5.68	9.08
PERU 5.625 11/18/2050	USD	103.582	5.39	5.36	14.23
CHILE 2.25 10/30/22	USD	100.145	2.33	1.35	0.37
CHILE 3.125 01/21/26	USD	96.87	4.14	4.01	3.33
CHILE 3.625 10/30/42	USD	79.767	5.28	5.24	13.46
COLOM 11.85 03/09/28	USD	141.032	3.87	3.72	4.37
COLOM 10.375 01/28/33	USD	123.137	7.34	7.09	6.62
COLOM 7.375 09/18/37	USD	97.275	7.72	7.64	8.83
COLOM 6.125 01/18/41	USD	83.325	7.85	7.84	9.96
MEX 4 10/02/23	USD	83.325	7.845	7.843	9.96
MEX5.55 01/45	USD	91.221	6.30	6.26	12.04



Source: Bloomberg

### Equity

Largest gains	Exchange	Currency	Price	▲%	Largest losses	Exchange	Currency	Price	▼%
BUENAVENTURA-ADR	Peru	USD	8.25	4.43	FIBRA TERRA	Mexico	MXN	26.9	-5.94
CMPC	Chile	CLP	1459.50	4.39	GRUPO BIMBO-A	Mexico	MXN	61.4	-4.84
SURAMERICANA	Colombia	COP	37300.00	3.61	CREDICORP LTD	Peru	USD	126	-4.83
SMU SA	Chile	CLP	92.00	3.37	CEMEX SAB-CPO	Mexico	MXN	7.83	-4.04
VOLCAN CIA MIN-B	Peru	PEN	0.62	3.33	ORBIA ADVANCE CO	Mexico	MXN	50.39	-3.47

Per Turnover	Exchange	Amount (US\$)	Per Volume	Exchange	Volume
AMERICA MOVIL-L	Mexico	40,683,914	ITAU CORPBANCA	Chile	530,558,119
WALMART DE MEXIC	Mexico	40,485,021	BANCO SANTANDER	Chile	90,262,717
GRUPO F BANORT-O	Mexico	29,518,716	ENEL CHILE SA	Chile	76,723,804
SOQUIMICH-B	Chile	24,079,551	BANCO DE CHILE	Chile	53,897,055
GRUPO MEXICO-B	Mexico	15,828,721	AMERICA MOVIL-L	Mexico	41,819,859

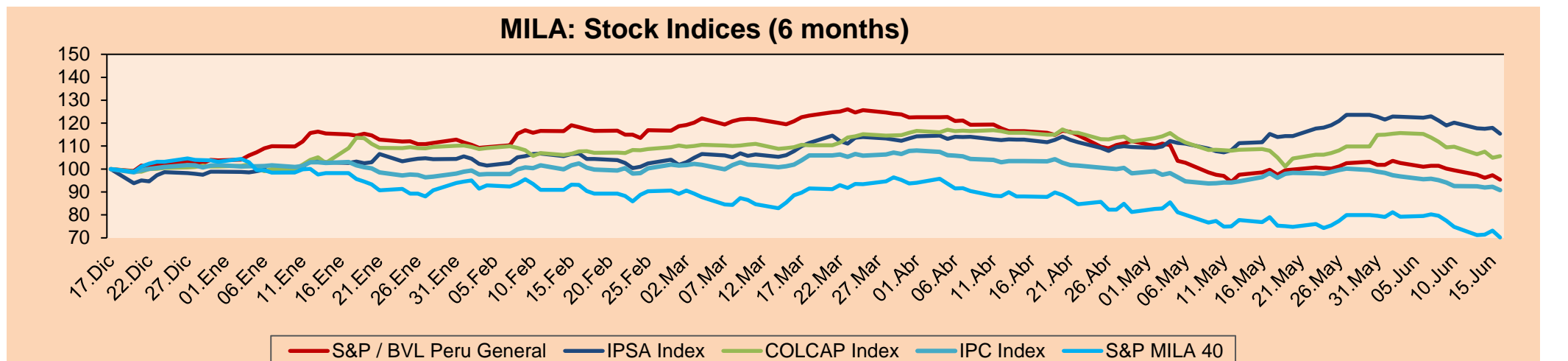
### MILA

Peru: The LSE General index ended today's session with a negative result of -1.99%. The index maintains a negative cumulative annual trend of -8.15% in local currency, while the dollar-adjusted performance amounted to -0.98%. Next, the S&P/BVL Peru SEL varied by -1.41% while the S&P/BVL LIMA 25 by -1.15%. The PEN spot reached S/3.7095. Headline: Peru's country risk rises 10 points and closes at 1.77 percentage points.

Chile: The IPSA index ended the day with a negative return of -2.14%. The most impacted sectors of the day were non-basic consumer products (-0.54%) and basic consumer products (-0.13%). The worst performing stocks were Ripley Corporación SA and SMU SA (-2.41%). Headline: Chilean funds investing in US stocks fall 55%.

Colombia: The COLCAP index ended the session with a positive return of +0.66%. The most benefited sector of the day was Finance (+0.10%). The best performing stocks were Grupo Aval Acciones y Valores (+1.27%) and Banco Davivienda SA (+0.17%). Headline: In April, industry and commerce continued with double-digit growth.

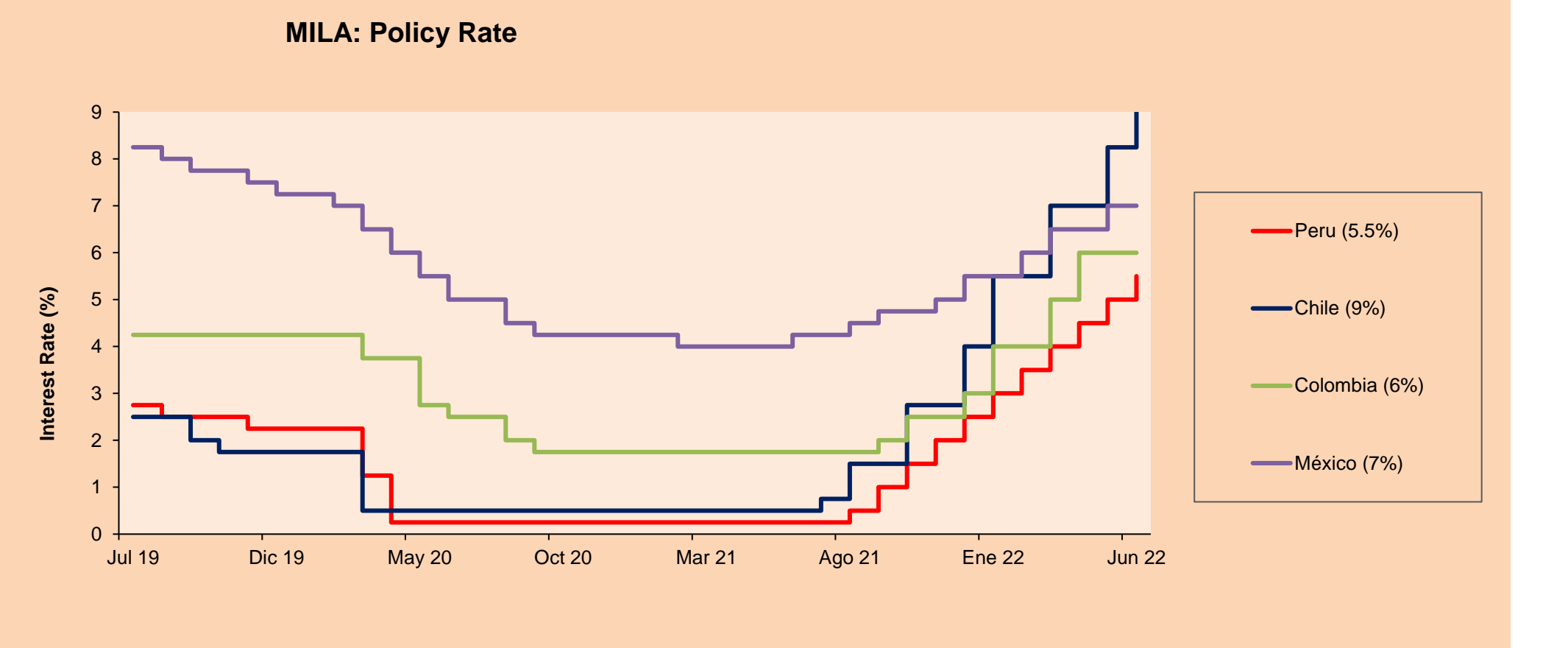
Mexico: The IPC index closed the day in negative territory at -1.63%. The worst performing sectors of the day were Non-Basic Consumer Products (-5.62%) and Industrials (-4.24%). The worst performing stocks were Controladora Vuela Compañía de Aviación (-16.91%) and Alsea SAB de CV (-7.20%). Headline: Banxico will copy the Fed twice over.



Base: 20/12/21=100  
Source: Bloomberg

### ETFs

ETFs	Curr.	Close	1D	5D	30 D	YTD	Exchange
▼ iShares MSCI All Peru Caped Index Fund	USD	28.19	-0.98%	-4.38%	-3.62%	-4.83%	NYSE Arca
▼ iShares MSCI All Chile Caped Index Fund	USD	25.95	-3.50%	-8.24%	-5.94%	12.39%	Cboe BZX
▼ Global X MSCI Colombia	USD	10.3	-1.62%	-7.54%	-5.68%	3.07%	NYSE Arca
▼ iShares MSCI Mexico Capped	USD	45.27	-2.27%	-7.84%	-11.06%	-10.53%	NYSE Arca
▼ iShares MSCI Emerging Markets	USD	39.52	-3.07%	-4.98%	-4.36%	-19.10%	NYSE Arca
▼ Vanguard FTSE Emerging Markets	USD	41.27	-3.12%	-4.27%	-2.53%	-16.56%	NYSE Arca
▼ iShares Core MSCI Emerging Markets	USD	48.48	-3.14%	-4.98%	-4.92%	-19.01%	NYSE Arca
▼ iShares JP Morgan Emerging Markets Bonds	USD	54.59	-1.73%	-2.90%	-3.80%	-13.10%	Cboe BZX
▼ Morgan Stanley Emerging Markets Domestic	USD	4.45	-1.77%	-4.51%	-1.77%	-18.80%	New York



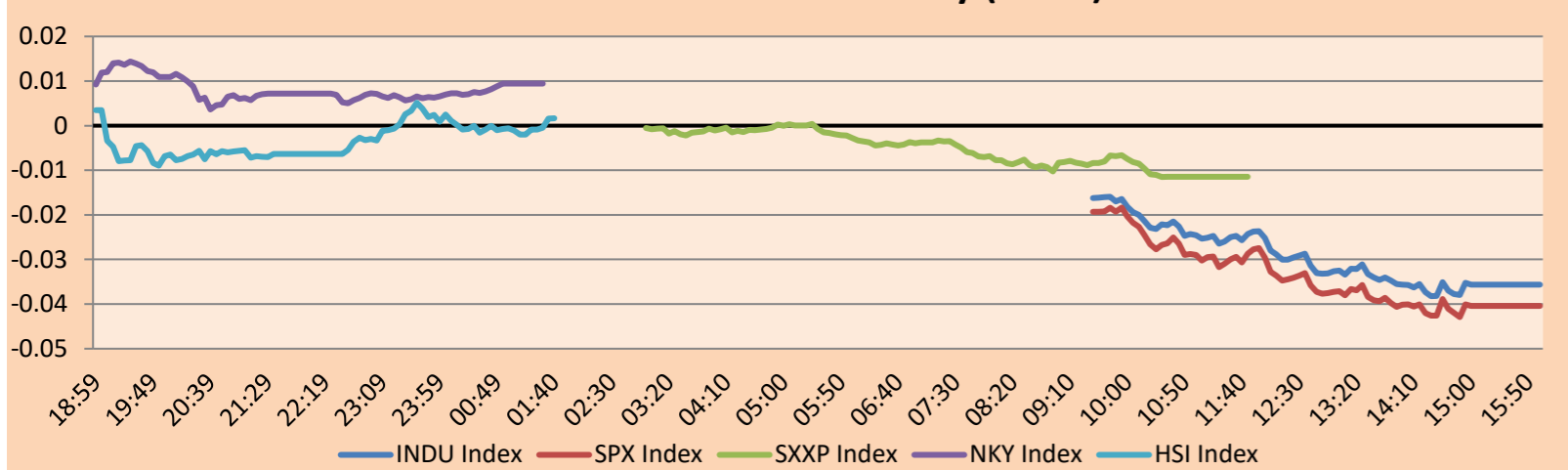
Source: Bloomberg

## WORLD

Main Indices	Close	1 D*	5 D*	1 M*	YTD*	Market Cap. (US\$ Mill.)
▼ Dow Jones (USA)	29,927.07	-2.42%	-7.27%	-8.35%	-17.64%	9,523,384
▼ Standard & Poor's 500 (EEUU)	3,666.77	-3.25%	-8.74%	-10.32%	-23.07%	33,218,758
▼ NASDAQ Composite (USA)	10,646.10	-4.08%	-9.43%	-11.17%	-31.95%	18,926,892
▼ Stoxx EUROPE 600 (Europe)	402.88	-2.47%	-7.25%	-8.22%	-17.41%	10,519,668
▼ DAX (Germany)	13,038.49	-3.31%	-8.17%	-8.09%	-17.92%	1,276,045
▼ FTSE 100 (United Kingdom)	7,044.98	-3.14%	-5.77%	-6.30%	-4.60%	1,569,579
▼ CAC 40 (France)	5,886.24	-2.39%	-7.43%	-8.46%	-17.71%	1,783,686
▼ IBEX 35 (Spain)	8,078.10	-1.18%	-7.27%	-4.69%	-7.30%	507,329
▼ MSCI AC Asia Pacific Index	159.17	-0.12%	-5.36%	-2.39%	-17.58%	21,762,596
▼ HANG SENG (Hong kong)	20,845.43	-2.17%	-4.68%	1.18%	-10.91%	3,366,406
▼ SHANGHAI SE Comp. (China)	3,285.39	-0.61%	1.43%	6.20%	-9.74%	6,664,341
▲ NIKKEI 225 (Japan)	26,431.20	0.40%	-6.43%	-3.25%	-10.41%	3,451,662
▼ S&P/ASX 200 (Australia)	6,591.10	-0.15%	-7.44%	-9.57%	-13.60%	1,533,452
▲ KOSPI (South Korea)	2,451.41	0.16%	-6.63%	-7.73%	-18.77%	1,444,617

\*Legend: Variation 1D: 1 Day; 5D: 5 Days; 1M: 1 Month; YTD: Var.% 12/31/21 to date

### Mercado Evolución Intraday (var %)

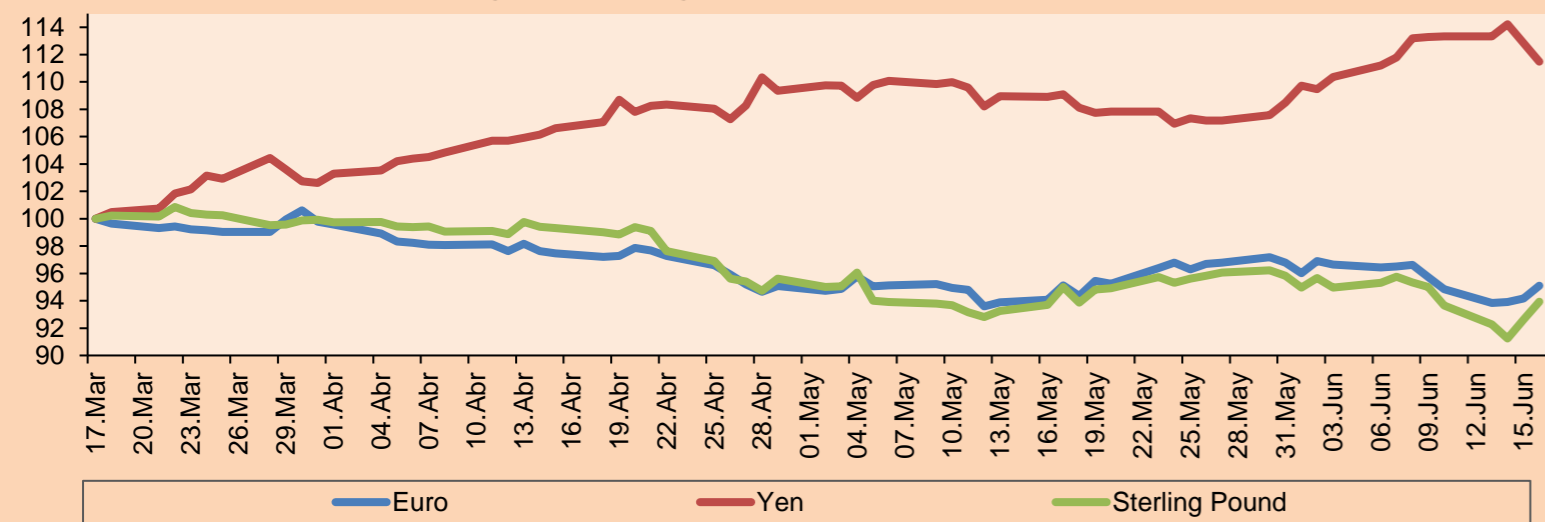


Source: Bloomberg

Currency	Price	1 D*	5 D*	1 M*	YTD*
▲ Euro	1,0549	1.01%	-0.64%	-0.01%	-7.22%
▼ Yen	132.2100	-1.22%	-1.60%	2.19%	14.89%
▲ Sterling Pound	1.2352	1.41%	-1.13%	-1.13%	-8.72%
▲ Yuan	6.7044	-0.16%	0.18%	-0.49%	5.48%
▼ Hong Kong Dollar	7.8495	-0.01%	0.01%	0.00%	0.68%
- Brazilian Real	5.0552	0.00%	3.02%	2.36%	-9.34%
▲ Argentine Peso	122.9122	0.17%	1.06%	4.11%	19.64%

\*Legend: Variation 1D: 1 Day; 5D: 5 Days; 1M: 1 Month; YTD: Var.% 12/31/21 to date

### Foreign Exchange Indices (3 months)

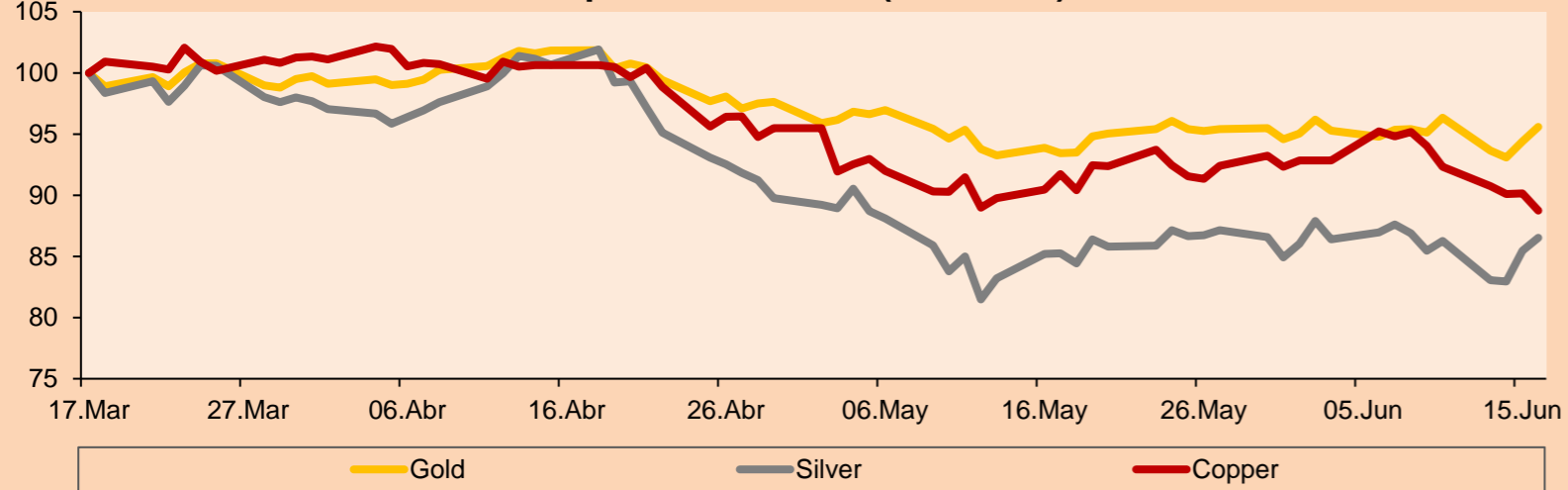


Base: 17/03/22=100  
Source: Bloomberg

Commodities	Close	1 D*	5 D*	1 M*	YTD*
▲ Oro (US\$ Oz. T) (LME)	1,857.33	1.28%	0.51%	2.32%	1.54%
▲ Plata (US\$ Oz. T) (LME)	21.96	1.23%	1.22%	1.49%	-5.80%
▼ Cobre (US\$ TM) (LME)	9,079.75	-1.57%	-5.62%	-3.27%	-6.78%
▼ Zinc (US\$ TM) (LME)	3,630.50	-1.84%	-3.89%	-0.95%	1.13%
▼ Petróleo WTI (US\$ Barril) (NYM)	117.59	1.98%	-3.23%	7.26%	61.57%
▼ Estaño (US\$ TM) (LME)	32,263.50	-1.33%	-12.84%	-5.95%	-18.06%
▲ Plomo (US\$ TM) (LME)	2,093.01	1.30%	-4.73%	0.36%	-10.47%
▲ Azúcar #11 (US\$ Libra) (NYB-ICE)	18.67	0.54%	-4.31%	-7.02%	1.69%
- Cacao (US\$ TM) (NYB-ICE)	2,377.00	0.00%	-3.88%	-6.05%	-7.47%
▲ Café Arábica (US\$ TM) (NYB-ICE)	231.80	1.44%	-1.28%	2.00%	3.25%

\*Leyenda: Variación 1D: 1 Día; 5D: 5 Días; 1M: 1 Mes; YTD: Var.% 31/12/21 a la fecha

### Principal Metals Index (3 months)



Base: 17/03/22=100  
Source: Bloomberg

## Equity

Germany (Stocks from DAX Index)

Largest gains	Curr.	Price	▲ %	Exchange	Largest losses	Curr.	Price	▼ %	Exchange
FME GY	EUR	49.9	-1.07	Xetra	HEI GY	EUR	49.76	-2.55	Xetra
EOAN GY	EUR	8.496	-6.64	Xetra	BAS GY	EUR	45.665	-6.86	Xetra
FRE GY	EUR	29.11	-2.12	Xetra	1COV GY	EUR	36.15	-8.69	Xetra
HFG GY	EUR	27.62	-7.50	Xetra	HNR1 GY	EUR	140.3	-1.99	Xetra

Europe (Stocks from STOXX EUROPE 600)

Largest gains	Curr.	Price	▲ %	Exchange	Largest losses	Curr.	Price	▼ %	Exchange
SOBI SS	SEK	206.9	-5.44	Stockholm	OMV AV	EUR	45.55	-6.28	Vienna
HUH1V FH	EUR	35.19	-4.11	Helsinki	FBK IM	EUR	10.69	-3.08	Borsa Italiana
AVV LN	GBp	2355	-3.56	Londres	BBVA SQ	EUR	4.172	-2.10	Soc.Bol SIBE
IGG LN	GBp	666	0.30	Londres	UCG IM	EUR	9.753	-3.22	Borsa Italiana

## Global Overview:

### United States:

The U.S. market closes with mostly negative returns. The DOW JONES index closed in negative territory in a scenario where President Joe Biden signed a legislation that seeks to cut the prices of shipping abroad, in an attempt of his mandate to fight inflation. This measure also seeks to alleviate supply chain bottlenecks. The S&P500 index also ended with a significantly negative performance, in a context where investors around the world are fearful of the possibility of a recession. In addition, the real estate sector fell further as mortgage rates rose the most since 1987. Likewise, the dollar fell as the European Central Bank tightened monetary policy, promising to narrow the gap between European and U.S. rates. Finally, the NASDAQ index managed to end the session with an unfavorable performance, in a scenario where commodities give favorable returns in the midst of a supply restriction due to the low amount of inventories, according to JPMorgan Chase. Thus, DOW JONES -2.42%; S&P 500 -3.25%; NASDAQ -4.08% ended the day with mostly negative results.

### Europe:

Major European indices ended the session with negative returns as higher borrowing costs amid central banks' commitment to curb inflationary pressures amplified fears of a recession. The pan-European STOXX 600 index ended with losses in a context where after policy tightening by the BOE and SNB affected investor sentiment. The UK market, reflected in the FTSE 100, fell this session after the Bank of England raised interest rates by a quarter of a percentage point, but said it was ready to act forcefully to end the dangers posed by an inflation rate heading higher. Meanwhile, the DAX index closed in negative territory where retail stocks such as Asos and Zalanda plunged, after the former warned that inflationary pressures were affecting buying behavior. The French market fell this session, where the worst hit asset of the session was Engie (-7.29%) amid lower gas deliveries due to Moscow's export restrictions. In addition, the Bank of France revised its growth forecast for the second quarter to 0.25% quarter-on-quarter, compared to the previous projections of 0.2%.

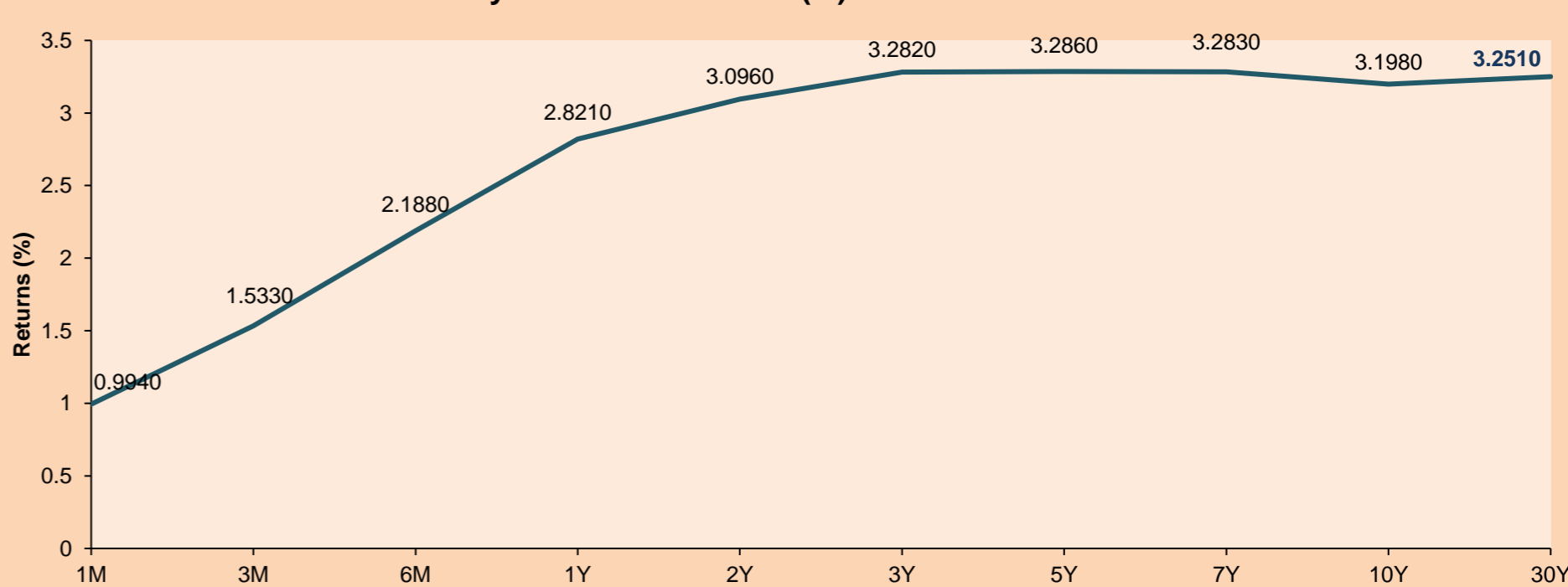
### Asia:

Major Asian indices closed with mostly negative returns as optimism faded from overnight moves on Wall Street following the Fed's rate hike, the most aggressive since 1994. The Chinese market closed in negative territory following a loss by real estate developers. Data showed that new home prices in China fell in May for the second month so far this year on widespread COVID-19 restrictions. The Hang Seng index ended lower as investors reconsidered the impact of accelerating inflation and an aggressive rate hike by the Fed. The South Korean market rose this session, amid a backdrop where investors' lack of confidence in economic growth persisted following the Fed's rate hike. The Fed raised interest rates by 75 bps, as expected. The Japanese market closed in positive territory, following the strength of Wall Street, after the Fed, in an expected move, raised interest rates by 75 bps, in its attempt to curb inflation in the United States. The Australian market ended lower as investors worry about the possibility of a recession after the Fed implemented its biggest interest rate hike in 28 years to curb rising inflation. Thus, NIKKEI +0.40%; HANG SENG -2.17%; CSI 300 -0.66%; S&P/ASX 200 -0.15%; KOSPI +0.16%; SHANGAI COMPOSITE -0.61% ended with negative returns.

## ETFs

	Curr.	Close	1D	5D	30 D	YTD	Exchange
SPDR S&P 500 ETF TRUST	USD	366.65	-3.31%	-8.67%	-10.21%	-22.80%	NYSE Arca
ISHARES MSCI EMERGING MARKET	USD	39.52	-3.07%	-4.98%	-4.36%	-19.10%	NYSE Arca
ISHARES IBOXX HIGH YLD CORP	USD	73.82	-1.59%	-4.06%	-3.67%	-15.16%	NYSE Arca
FINANCIAL SELECT SECTOR SPDR	USD	30.84	-2.53%	-8.62%	-9.67%	-21.02%	NYSE Arca
VANECK GOLD MINERS ETF	USD	30.76	1.89%	-1.06%	-1.54%	-3.97%	NYSE Arca
ISHARES RUSSELL 2000 ETF	USD	163.90	-4.63%	-10.72%	-10.26%	-26.32%	NYSE Arca
SPDR GOLD SHARES	USD	172.69	1.12%	0.27%	1.98%	1.01%	NYSE Arca
ISHARES 20+ YEAR TREASURY BO	USD	111.72	0.79%	-2.41%	-2.39%	-24.61%	NASDAQ GM
INVECO QQQ TRUST SERIES 1	USD	271.39	-4.03%	-9.36%	-11.36%	-31.79%	NASDAQ GM
ISHARES BIOTECHNOLOGY ETF	USD	105.82	-2.61%	-7.16%	-9.18%	-30.66%	NASDAQ GM
ENERGY SELECT SECTOR SPDR	USD	77.74	-5.63%	-13.85%	-7.31%	40.07%	NYSE Arca
PROSHARES ULTRA VIX ST FUTUR	USD	16.95	9.00%	25.09%	16.74%	36.36%	Cboe BZX
UNITED STATES OIL FUND LP	USD	87.66	0.84%	-3.75%	8.08%	61.26%	NYSE Arca
ISHARES MSCI BRAZIL ETF	USD	28.27	-4.43%	-10.20%	-14.75%	0.71%	NYSE Arca
SPDR S&P OIL & GAS EXP & PR	USD	139.68	-6.35%	-15.59%	-0.70%	45.70%	NYSE Arca
UTILITIES SELECT SECTOR SPDR	USD	65.48	-1.93%	-8.92%	-9.55%	-8.52%	NYSE Arca
ISHARES US REAL ESTATE ETF	USD	86.95	-2.51%	-8.04%	-10.55%	-25.13%	NYSE Arca
SPDR S&P BIOTECH ETF	USD	63.97	-2.60%	-8.95%	-10.48%	-42.86%	NYSE Arca
ISHARES IBOXX INVESTMENT GRA	USD	109.21	0.11%	-2.14%	-1.75%	-17.59%	NYSE Arca
ISHARES JP MORGAN USD EMERGI	USD	85.47	-2.22%	-3.65%	-4.12%	-21.63%	NASDAQ GM
REAL ESTATE SELECT SECT SPDR	USD	38.85	-2.39%	-7.87%	-10.07%	-25.01%	NYSE Arca
ISHARES CHINA LARGE-CAP ETF	USD	31.65	-3.86%	-3.27%	3.87%	-13.48%	NYSE Arca
CONSUMER STAPLES SPDR	USD	69.08	-0.76%	-4.36%	-10.02%	-10.41%	NYSE Arca
VANECK JUNIOR GOLD MINERS	USD	37.51	1.27%	-2.55%	-0.71%	-10.54%	NYSE Arca
SPDR BLOOMBERG HIGH YIELD BO	USD	91.12	-1.66%	-4.31%	-4.00%	-16.07%	NYSE Arca
VANGUARD REAL ESTATE ETF	USD	87.04	-2.63%	-8.11%	-10.71%	-24.97%	NYSE Arca
GRAYSCALE BITCOIN TRUST BTC	USD	12.74	-9.42%	-34.39%	-34.05%	-62.82%	OTC US

### USA Treasury Bonds Yield Curve (%)



Source: Bloomberg

LIMA

Stocks

	Ticker	Currency	Price	1D*	5D*	30D*	YTD*	Frequency	Volume (US\$)	Beta	Dividend Yield (%)	Price Earning	Market Cap. (M US\$)	Economic Sector*	Index Weight
▲	ALICORC1 PE**	S/.	5.40	0.08%	-2.05%	-5.50%	-7.37%	95.00%	1,887	0.81	0.00	12.10	1,240.65	Industrial	3.53%
-	ATACOCB1 PE**	S/.	0.10	0.00%	0.00%	0.00%	-16.67%	5.00%	4	1.01	0.00	-	25.22	Mining	1.02%
▼	BACKUS1 PE**	S/.	22.00	-2.22%	-0.90%	-2.44%	7.32%	95.00%	7,330	0.79	15.59	7.45	7,964.69	Industrial	0.82%
▼	BAP PE**	US\$	122.50	-4.16%	-7.47%	-12.47%	-1.03%	100.00%	337,951	1.34	3.27	-	9,741.20	Diverse	5.82%
▼	BVN PE**	US\$	7.55	-1.31%	-4.43%	-2.45%	3.42%	100.00%	91,102	1.36	0.93	-	2,081.04	Mining	5.88%
▼	CASAGRC1 PE**	S/.	8.00	-2.44%	2.96%	22.14%	-12.09%	80.00%	8,842	1.15	67.52	4.79	181.66	Agricultural	1.31%
▲	BBVAC1 PE**	S/.	1.73	2.98%	1.76%	15.33%	-4.42%	100.00%	11,087	0.82	6.67	6.59	3,151.95	Finance	2.85%
▼	CORARE1 PE**	S/.	1.44	-0.69%	-3.36%	2.13%	-16.28%	70.00%	53,193	0.77	17.82	2.53	594.35	Industrial	1.72%
-	CPACASC1 PE**	S/.	4.00	0.00%	0.00%	2.56%	-19.19%	100.00%	7,416	0.72	19.75	11.11	494.52	Industrial	2.38%
▼	CVERDEC1 PE**	US\$	27.45	-1.96%	-3.41%	-8.50%	-26.27%	100.00%	33,629	0.86	6.76	7.42	9,609.04	Mining	5.25%
-	ENGEPEC1 PE**	US\$	1.95	0.00%	-1.02%	14.71%	-5.80%	85.00%	533	0.81	0.00	7.27	1,259.30	Public Services	1.44%
▲	ENDISPC1**	S/.	3.80	5.56%	1.33%	2.70%	-5.00%	25.00%	6,083	0.87	5.45	6.82	654.14	Public Services	0.98%
▼	FERREYC1 PE**	S/.	2.10	-0.94%	-0.94%	1.45%	2.44%	100.00%	25,524	0.95	11.36	4.02	535.58	Diverse	4.90%
▼	AENZAC1 PE**	S/.	1.05	-0.94%	0.96%	-2.78%	-23.36%	95.00%	9,834	1.00	0.00	-	338.81	Diverse	4.05%
-	IFS PE**	US\$	25.95	-1.52%	-0.19%	-1.85%	-3.35%	90.00%	51,900	1.02	9.25	-	2,995.10	Diverse	7.22%
-	INRETC1 PE**	US\$	29.30	0.00%	-2.30%	-6.09%	-16.17%	90.00%	447	0.70	0.00	18.99	3,186.28	Diverse	5.28%
▲	LUSURC1 PE**	S/.	16.00	6.52%	9.59%	15.11%	12.36%	55.00%	7,447	0.00	6.38	13.27	2,100.34	Public Services	1.81%
▼	MINSURI1 PE**	S/.	4.34	-0.91%	-3.56%	-4.62%	9.87%	95.00%	4,005	1.09	8.14	1.66	3,373.02	Mining	3.09%
-	PML PE**	US\$	0.13	0.00%	0.00%	0.00%	8.33%	25.00%	1,300	1.14	0.00	-	34.37	Mining	2.12%
▼	SCCO PE**	US\$	56.00	-3.41%	-9.27%	-1.06%	-9.36%	95.00%	809,046	0.98	7.41	12.00	43,293.04	Industrial	2.12%
-	SIDERC1 PE**	S/.	1.44	0.00%	2.86%	6.67%	-10.00%	75.00%	4,004	0.69	43.54	3.38	271.73	Mining	2.14%
-	TV PE**	US\$	0.49	0.00%	-2.00%	-3.92%	-62.31%	75.00%	12,026	1.25	0.00	-	48.48	Industrial	1.43%
-	UNACEMC1 PE**	S/.	1.65	0.00%	-1.79%	6.45%	-31.25%	85.00%	11,003	1.06	6.67	-	808.71	Mining	2.93%
▼	VOLCABC1 PE**	S/.	0.59	-3.28%	-1.67%	-13.24%	-1.67%	100.00%	51,052	1.11	0.00	8.15	648.38	Industrial	3.00%
-	BROCALC1 PE**	S/.	5.90	0.00%	-15.59%	-21.33%	13.46%	10.00%	222	0.00	0.00	44.64	258.45	Mining	5.90%
#####	RIMSEGC1 PE**	S/.	#N/A N/A	#jVALOR!	#jVALOR!	0.00%	#jVALOR!	0.00%	315	0.00	0.00	11.82	#jVALOR!	Finance	3.09%
-	CORAREC1 PE**	US\$	2.18	0.00%	0.00%	0.00%	14.74%	50.00%	392,400	0.00	11.77	3.84	2,204.74	Mining	2.12%
▲	ENGIEC1 PE**	S/.	5.60	0.54%	-1.41%	-3.45%	-4.44%	25.00%	4,536	0.53	4.48	15.57	907.85	Diversas	2.12%
-	GBVLAC1 PE**	S/.	2.40	0.00%	0.00%	-0.83%	-11.76%	15.00%	24,089	0.00	0.00	24.94	117.81	Diversas	2.14%

Quantity of shares: 28  
Source: Bloomberg, Economática  
\* Bloomberg Industry Classification System  
\*\* PER is used in the stock market and original currency of the instrument

Up 5  
Down 12  
Hold 11

\*Legend: Variation 1D: 1 Day; 5D: 5 Days, 1M: 1 Month; YTD: Var.% 12/31/21 to date

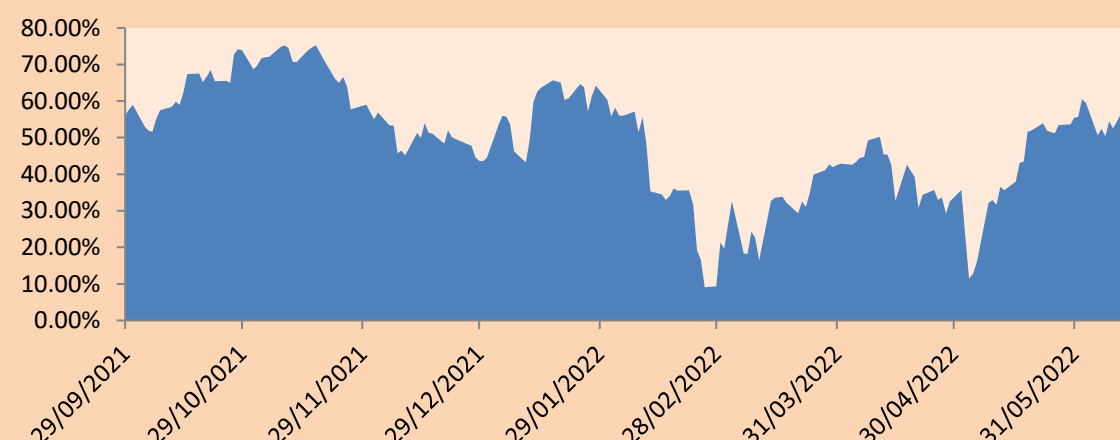
Sectorial Indices

	Close	1D*	5D*	30D*	YTD*	Beta	
▼	S&P/BVLMining	361.82	-2.83%	-8.16%	-4.08%	-12.09%	1.02
▼	S&P/BVLConsumer	1,050.16	-0.60%	-1.60%	0.36%	-8.52%	0.49
▼	S&P/BVLIndustrials	231.70	-0.40%	-0.75%	2.31%	-10.22%	0.73
▼	S&P/BVLFinancials	861.01	-3.84%	-7.47%	-9.63%	-4.98%	1.39
▼	S&P/BVLConstruction	235.88	-0.16%	-0.66%	2.71%	-16.76%	0.66
▲	S&P/BVLPublicSvcs	537.70	1.19%	-0.83%	2.56%	-1.97%	0.09
▲	S&P/BVLElectricUtil	524.92	1.18%	-0.84%	2.56%	-1.97%	0.09

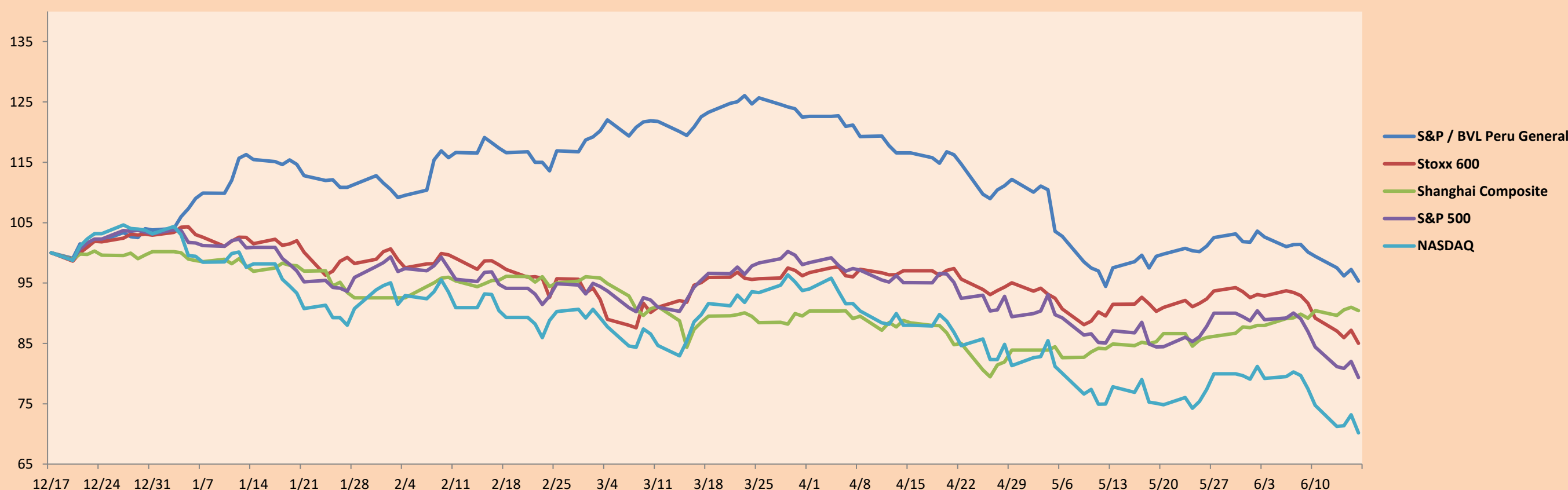
S&P/BVLConstructionTRPEN

\*Legend: Variation 1D: 1 Day; 5D: 5 Days, 1M: 1 Month; YTD: Var.% 12/31/21 to date

Correlation Graph of Returns of Mining Index against Metallic Index of London (3 months)



Indices (6 months)



Base: 17/12/21=100  
Source: Bloomberg

Capital Market Laboratory Coordinator: MS Javier Penny Pestana  
Collaboration: Sebastian Ore, Fabrizio Lavalle, Miguel Solimano y Jhonatan Cueva  
email: pulsobursatil@ulima.edu.pe  
facebook: www.facebook.com/pulsobursatil.ul

## SOVEREIGN RATING

### RISK RATINGS

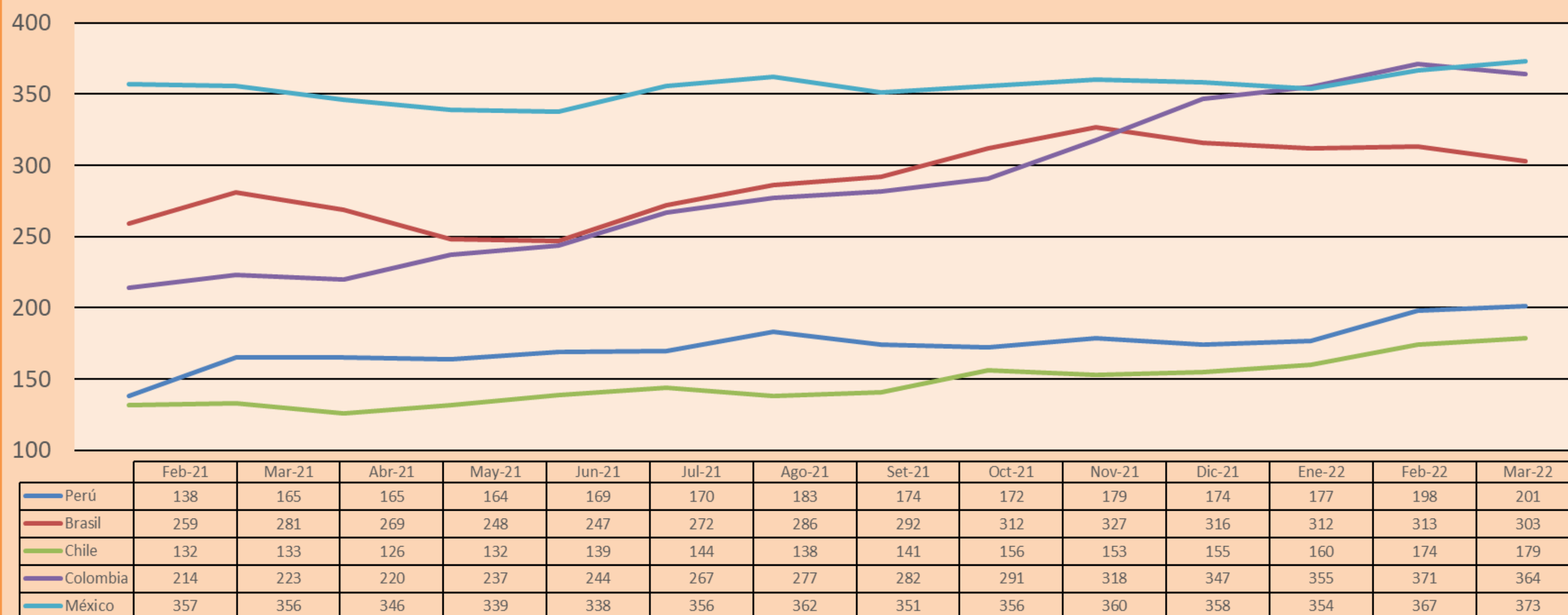
Moody's	S&P	Fitch	
Aaa	AAA	AAA	Prime
Aa1	AA+	AA+	High credit quality
Aa2	AA	AA	
Aa3	AA-	AA-	
A1	A+	A+	Medium-high grade, with low credit risk
A2	A	A	
A3	A-	A-	
Baa1	BBB+	BBB+	Moderate Credit Risk
Baa2	BBB	BBB	
Baa3	BBB-	BBB-	
Ba1	BB+	BB+	It has speculative elements and it is subject to substantial credit risk
Ba2	BB	BB	
Ba3	BB-	BB-	
B1	B+	B+	It is considered speculative and it has high credit risk
B2	B	B	
B3	B-	B-	
Caa1	CCC+	CCC	
Caa2	CCC	CCC	
Caa3	CCC-	CCC	
Ca	CC	CC	Very close to default or in default
	C	CC	
C	D	DD	

Source: Bloomberg

Latin America Credit Rating			
Clasificadora de riesgo			
Country	Moody's	Fitch	S&P
Peru	Baa1	BBB	BBB
México	Ba2	BB-	BB-
Venezuela	C	WD	NR
Brazil	Ba2	BB-	BB-
Colombia	Baa2	BB+	BB+
Chile	A1	A-	A
Argentine	Ca	WD	CCC+
Panama	Baa2	BBB-	BBB

Source: Bloomberg

## LATAM Country Risk(bps)



Source: BCRP

Capital Market Laboratory Coordinator: MS Javier Penny Pestana  
Collaboration: Sebastian Ore, Fabrizio Lavalle, Miguel Solimano y Jhonatan Cueva  
email: pulsobursatil@ulima.edu.pe  
facebook: www.facebook.com/pulsobursatil.ul