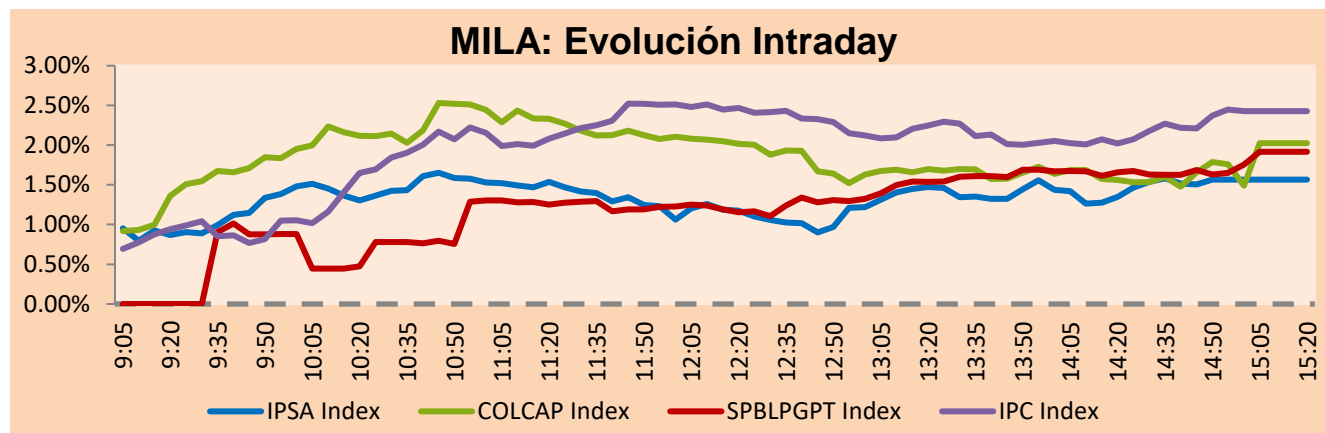


## MILA

Lima, June 24, 2022

Main Indexes	Close	1 D	5 D	1 M	YTD	Cap. Burs. (US\$ bill)
▲ IPSA (Chile)	4,983.66	0.99%	-0.91%	-7.78%	15.30%	94.01
▲ IGPA (Chile)	26,439.15	1.52%	0.18%	-8.29%	21.60%	108.66
▲ COLSC (Colombia)	862.62	0.10%	-4.30%	-5.91%	-11.16%	5.45
▲ COLCAP (Colombia)	1,365.96	2.03%	-7.28%	-10.79%	-3.11%	66.87
▲ S&P/BVL (Perú)*	18,855.08	1.92%	-2.72%	-9.91%	-10.99%	82.84
▲ S&P/BVL SEL (Perú)	489.72	1.69%	-4.09%	-10.31%	-13.43%	73.92
▲ S&P/BVL LIMA 25	26,726.03	1.84%	-3.99%	-7.86%	-11.91%	82.03
▲ IPC (México)	47,741.50	2.32%	-0.57%	-7.72%	-9.12%	304.30
▲ S&P MILA 40	446.04	0.98%	-7.03%	-16.18%	0.20%	6,046.01

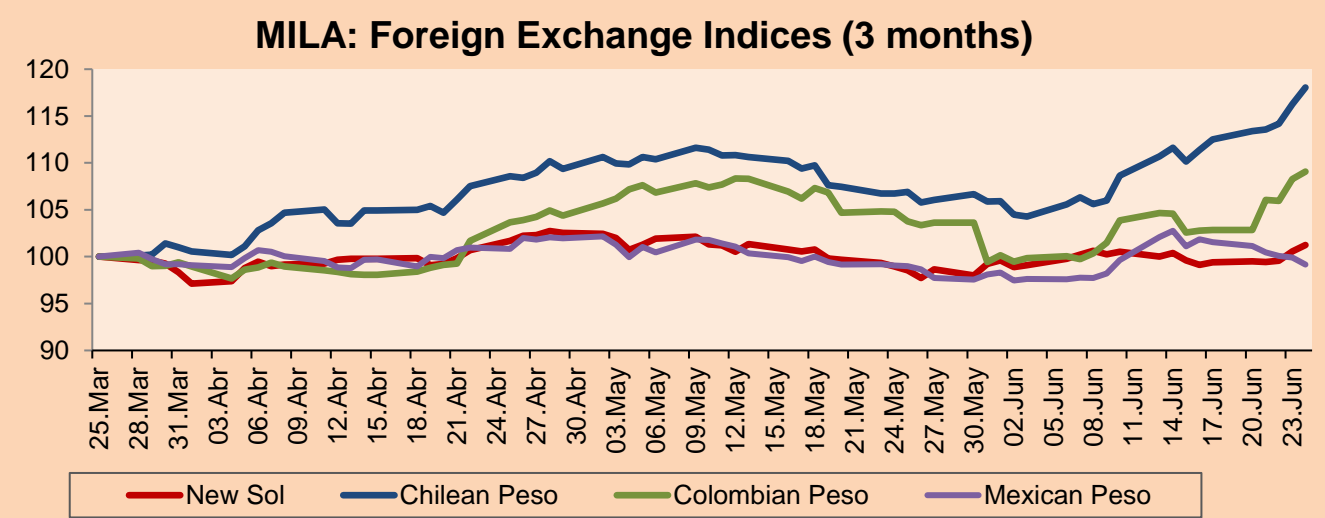
\*Legend: Variation 1D: 1 day; 5D: 5 days; 1M: 1 Month; YTD: Var% 12/31/21 to date



Source: Bloomberg

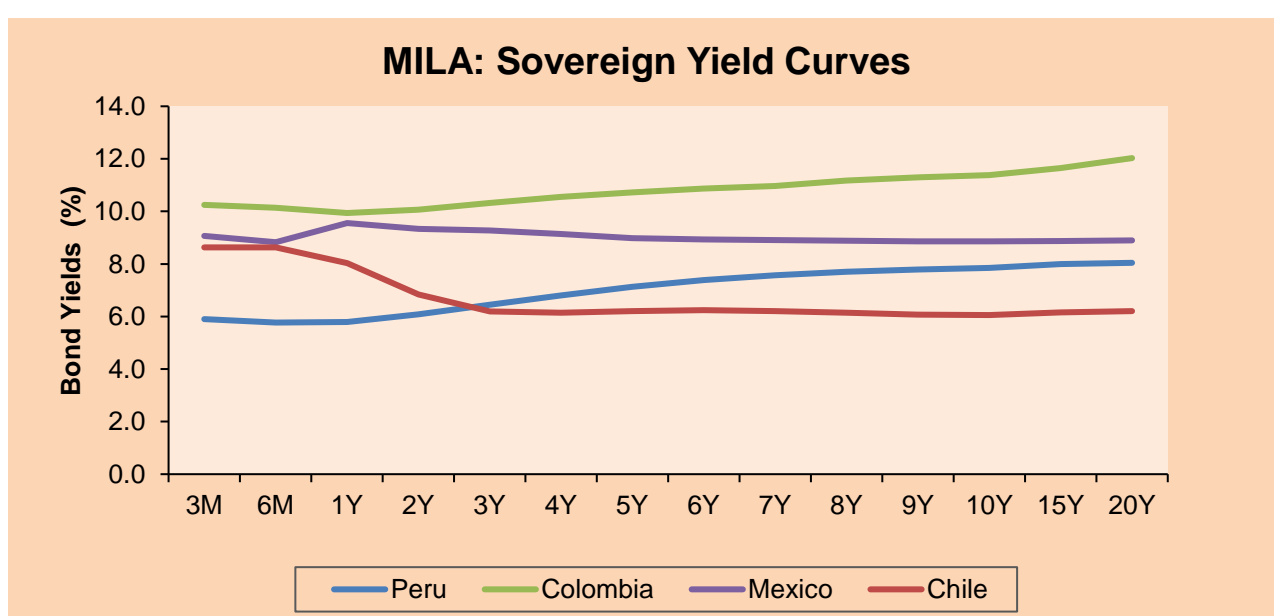
Currency	Price	1D*	5D*	30 D*	YTD*
▲ Sol (PEN)	3,7885	0.71%	1.83%	2.73%	-5.27%
▲ Chilean Peso (CLP)	918.50	1.52%	4.92%	10.43%	7.81%
▲ Colombian Peso (COP)	4,138.38	0.73%	6.06%	5.12%	1.42%
▼ Mexican Peso (MXN)	19.87	-0.74%	-2.33%	0.20%	-3.22%

\*Legend: Variation 1D: 1 day; 5D: 5 days; 1M: 1 Month; YTD: Var% 12/31/21 to date



Base: 25/03/22=100  
Source: Bloomberg

Fixed Income	Currency	Price	Bid Yield (%)	Ask Yield (%)	Duration
PERU 7.35 07/21/25	USD	108.148	4.55	4.39	2.68
PERU 4.125 08/25/27	USD	98.192	4.57	4.47	4.53
PERU 8.75 11/21/33	USD	127.606	5.50	5.42	7.66
PERU 6.55 03/14/37	USD	109.208	5.64	5.60	9.08
PERU 5.625 11/18/2050	USD	104.356	5.35	5.30	14.23
CHILE 2.25 10/30/22	USD	100.136	2.28	1.40	0.34
CHILE 3.125 01/21/26	USD	96.977	4.09	3.99	3.29
CHILE 3.625 10/30/42	USD	80.565	5.22	5.15	13.54
COLOM 11.85 03/09/28	USD	140.477	3.96	3.77	4.35
COLOM 10.375 01/28/33	USD	121.188	7.58	7.32	6.56
COLOM 7.375 09/18/37	USD	94.481	8.06	7.96	8.71
COLOM 6.125 01/18/41	USD	80.726	8.21	8.11	9.80
MEX 4 10/02/23	USD	80.726	8.206	8.11	9.8
MEX5.55 01/45	USD	92.526	6.20	6.14	12.12



Source: Bloomberg

### Equity

Largest gains	Exchange	Currency	Price	▲%	Largest losses	Exchange	Currency	Price	▼%
SURAMERICANA	Colombia	COP	41780.00	9.98	BANCO CRED INVER	Chile	CLP	26850	-2.01
ECOPETROL	Colombia	COP	2139.00	6.68	GRUPO ARGOS SA	Colombia	COP	16030	-1.41
VOLCAN CIA MIN-B	Peru	PEN	0.57	5.56	BANCO SANTANDER	Chile	CLP	37.3	-1.27
SOQUIMICH-B	Chile	CLP	82000.00	5.26	CONCHATORO	Chile	CLP	1190	-1.15
CMPC	Chile	CLP	1430.00	5.07	BANCO DE CHILE	Chile	CLP	83	-1.05

Per Turnover	Exchange	Amount (US\$)	Per Volume	Exchange	Volume
GRUPO MEXICO-B	Mexico	58,661,701	ITAU CORPBANCA	Chile	3,851,101,840
GRUPO F BANORT-O	Mexico	48,447,744	BANCO SANTANDER	Chile	79,027,638
AMERICA MOVIL-L	Mexico	46,401,681	BANCO DE CHILE	Chile	77,206,587
FOMENTO ECON-UBD	Mexico	38,410,524	ENEL AMERICAS SA	Chile	64,577,916
WALMART DE MEXIC	Mexico	37,747,399	ENEL CHILE SA	Chile	50,675,623

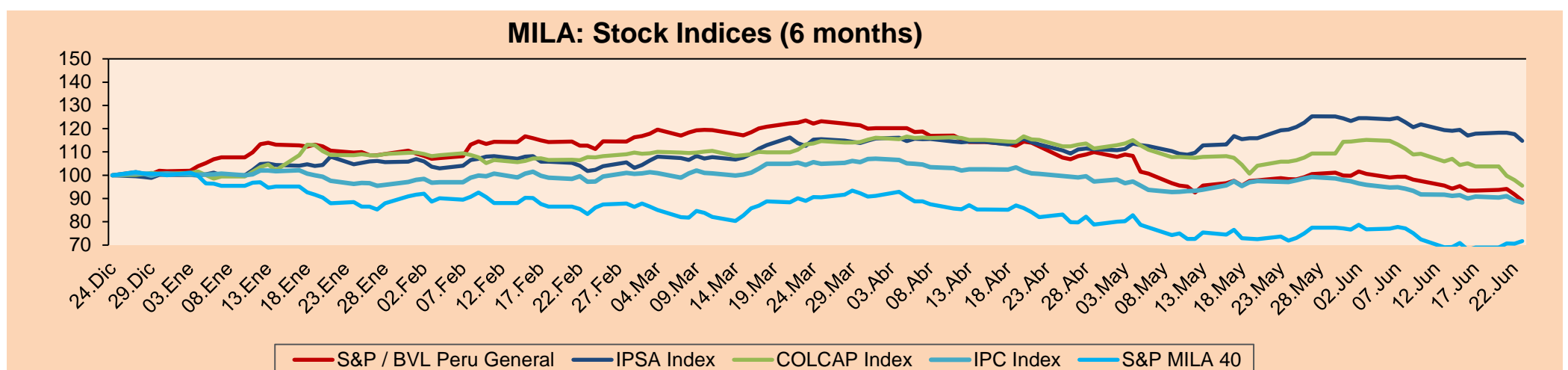
### MILA

Peru: The BVL General index ended today's session with a positive result of +1.92%. The index maintains a negative annual cumulative trend of -10.69% in local currency, while the dollar-adjusted performance amounted to -5.45%. Then, the S&P/BVL Peru SEL varied by +1.69% while the S&P/BVL LIMA 25 by +1.84%. The spot PEN reached S/.3.7885. Headline: Peru's country risk dropped two points and closed at 1.78 pps.

Chile: The IPSA index ended the day with a positive return of +0.99%. The best performing stocks were Sociedad Química y Minera Chile-B (+5.26%) and Empresas CMPC SA (+5.07%). Headline: Market with dollar \$900 and IPC could rise up to 1% in July and August.

Colombia: The COLCAP index ended the session with a positive return of +2.03%. The best performing stocks were Grupo de Inversiones Suramericano (+9.98%) and Ecopetrol SA (+6.68%). Headline: Colombian economy will not deteriorate with the new government.

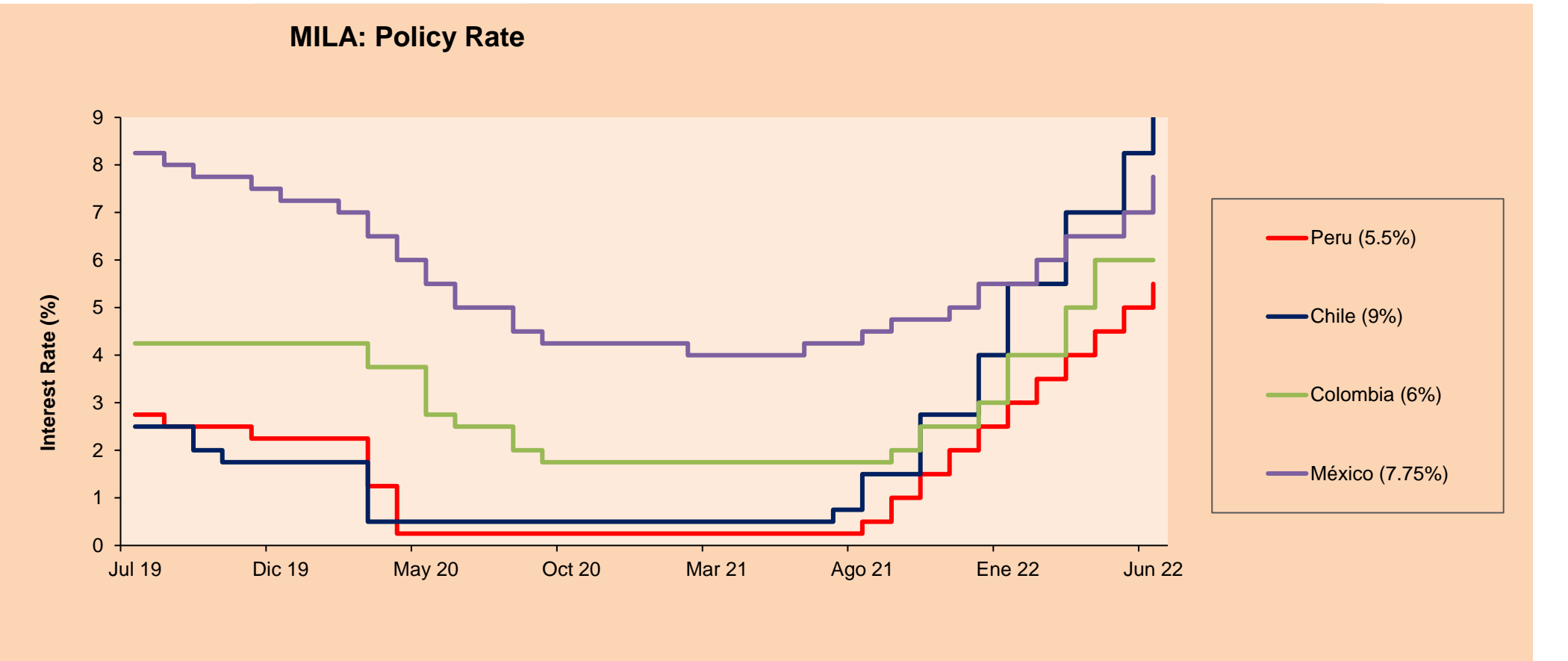
Mexico: The IPC index closed the day in positive territory, +2.32%. The best performing stocks were GCC Sab de CV (+5.39%) and CEMEX SAB-CPO (+4.54%). Headline: Mexican economy accelerates 1.07% in April and points to its highest increase in a year.



Base: 27/12/21=100  
Source: Bloomberg

### ETFs

ETFs	Curr.	Close	1D	5D	30 D	YTD	Exchange
▲ iShares MSCI All Peru Caped Index Fund	USD	26.36	1.58%	-5.35%	-13.26%	-11.01%	NYSE Arca
▲ iShares MSCI All Chile Caped Index Fund	USD	24.54	0.25%	-4.81%	-15.50%	6.28%	Cboe BZX
▲ Global X MSCI Colombia	USD	9.1	0.89%	-11.91%	-17.26%	-8.94%	NYSE Arca
▲ iShares MSCI Mexico Capped	USD	47.33	3.59%	3.32%	-8.28%	-6.46%	NYSE Arca
▲ iShares MSCI Emerging Markets	USD	40.65	2.37%	2.47%	-0.68%	-16.79%	NYSE Arca
▲ Vanguard FTSE Emerging Markets	USD	42.19	2.13%	1.79%	0.57%	-14.70%	NYSE Arca
▲ iShares Core MSCI Emerging Markets	USD	49.78	2.34%	2.22%	-1.52%	-16.84%	NYSE Arca
▲ iShares JP Morgan Emerging Markets Bonds	USD	55.55	1.54%	1.89%	-2.29%	-11.57%	Cboe BZX
▲ Morgan Stanley Emerging Markets Domestic	USD	4.57	1.11%	3.16%	-1.51%	-16.61%	New York



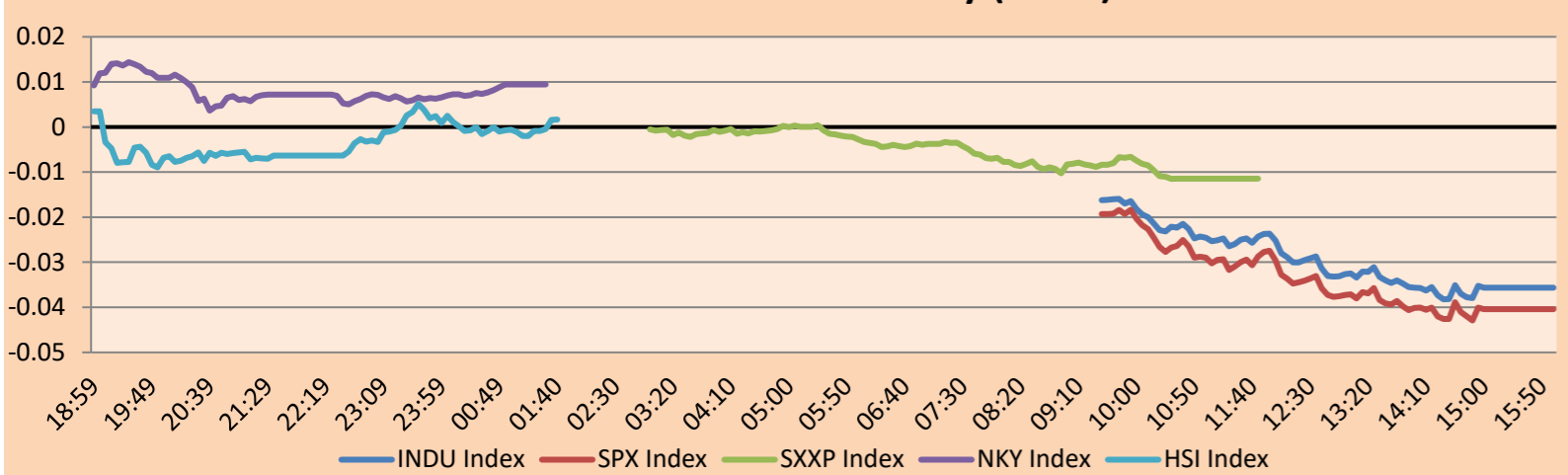
Source: Bloomberg

## WORLD

Main Indices	Close	1 D*	5 D*	1 M*	YTD*	Market Cap. (US\$ Mill.)
▲ Dow Jones (USA)	31,500.68	2.68%	5.26%	-6.17%	-14.24%	9,877,641
▲ Standard & Poor's 500 (EEUU)	3,911.74	3.06%	6.68%	-7.52%	-19.31%	34,279,606
▲ NASDAQ Composite (USA)	11,607.62	3.34%	9.03%	-7.10%	-27.96%	19,706,682
▲ Stoxx EUROPE 600 (Europe)	412.93	2.62%	2.40%	-6.25%	-14.68%	10,853,643
▲ DAX (Germany)	13,118.13	1.59%	-0.06%	-8.51%	-16.70%	1,306,726
▲ FTSE 100 (United Kingdom)	7,208.81	2.68%	2.74%	-3.45%	-0.83%	1,629,711
▲ CAC 40 (France)	6,073.35	3.23%	3.24%	-6.60%	-14.92%	1,845,853
▲ IBEX 35 (Spain)	8,244.10	1.70%	1.21%	-6.90%	-4.55%	520,430
▲ MSCI AC Asia Pacific Index	159.21	1.19%	1.53%	-2.60%	-16.30%	22,248,550
▲ HANG SENG (Hong kong)	21,719.06	2.09%	3.06%	8.32%	-4.18%	3,597,748
▲ SHANGHAI SE Comp. (China)	3,349.75	0.89%	0.99%	8.91%	-6.33%	6,952,957
▲ NIKKEI 225 (Japan)	26,491.97	1.23%	2.04%	1.00%	-6.05%	3,430,697
▲ S&P / ASX 200 (Australia)	6,578.70	0.77%	1.61%	-5.83%	-9.15%	1,555,583
▲ KOSPI (South Korea)	2,366.60	2.26%	-3.05%	-8.19%	-18.66%	1,434,614

\*Legend: Variation 1D: 1 Day; 5D: 5 Days; 1M: 1 Month; YTD: Var.% 12/31/21 to date

Mercado Evolución Intraday (var %)

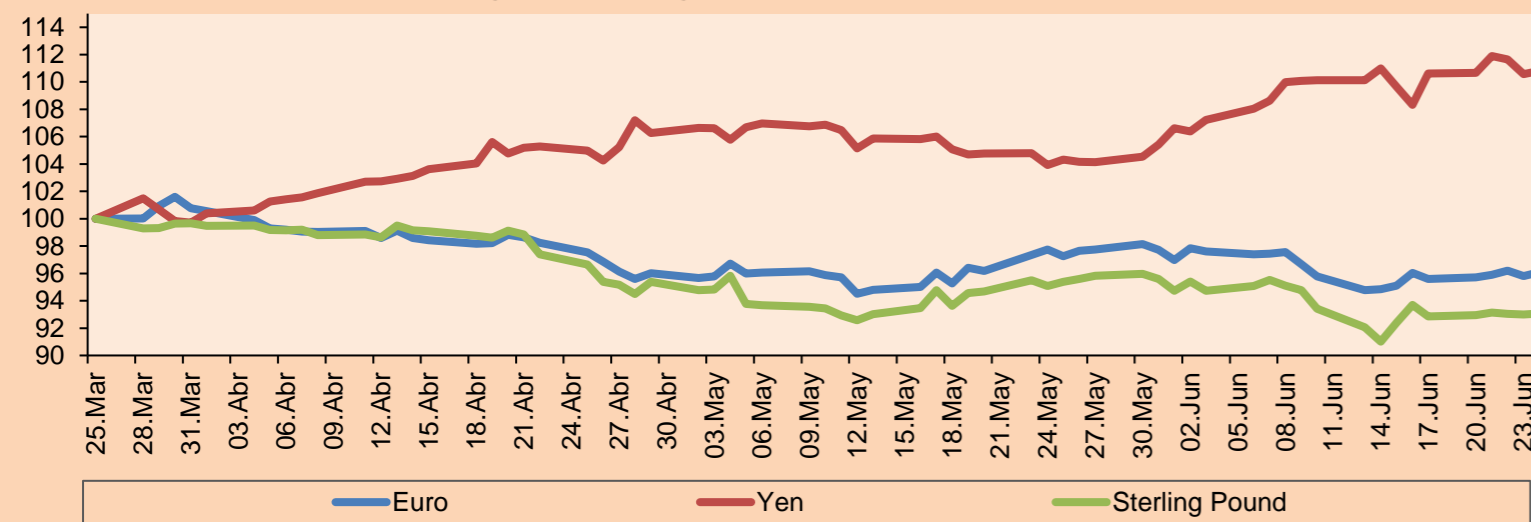


Source: Bloomberg

Currency	Price	1 D*	5 D*	1 M*	YTD*
▲ Euro	1.0553	0.29%	0.51%	-1.20%	-7.19%
▲ Yen	135.2300	0.21%	0.16%	6.21%	17.51%
▲ Sterling Pound	1.2268	0.07%	0.22%	-2.43%	-9.34%
▼ Yuan	6.6898	-0.14%	-0.40%	-0.05%	5.25%
▼ Hong Kong Dollar	7.8492	-0.01%	-0.01%	-0.01%	0.67%
▲ Brazilian Real	5.2427	0.05%	1.72%	8.63%	-5.97%
▲ Argentine Peso	124.2545	0.12%	1.09%	4.32%	20.95%

\*Legend: Variation 1D: 1 Day; 5D: 5 Days; 1M: 1 Month; YTD: Var.% 12/31/21 to date

Foreign Exchange Indices (3 months)

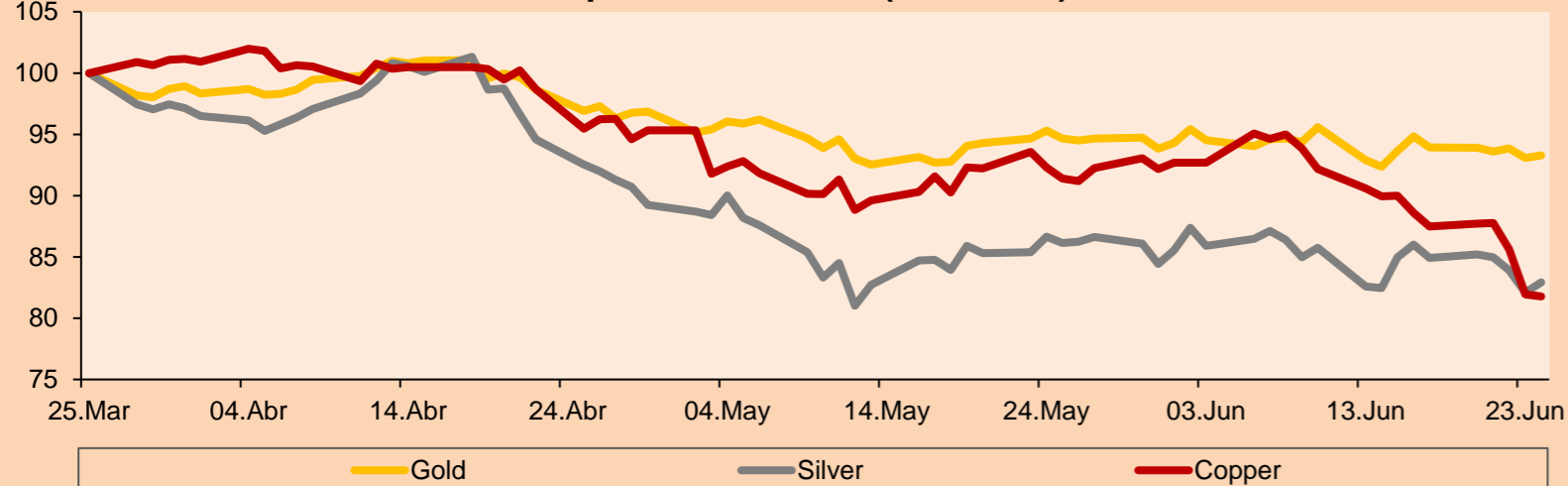


Base: 25/03/22=100  
Source: Bloomberg

Commodities	Close	1 D*	5 D*	1 M*	YTD*
▲ Oro (US\$ Oz. T) (LME)	1,826.88	0.23%	-0.68%	-1.43%	-0.13%
▲ Plata (US\$ Oz. T) (LME)	21.16	1.00%	-2.35%	-3.75%	-9.20%
▼ Cobre (US\$ TM) (LME)	8,381.00	-0.19%	-6.54%	-10.53%	-13.96%
▼ Zinc (US\$ TM) (LME)	3,485.00	-6.05%	-2.56%	-7.21%	-2.92%
▲ Petróleo WTI (US\$ Barril) (NYM)	107.62	3.21%	-0.34%	-0.12%	49.12%
▲ Estaño (US\$ TM) (LME)	25,055.00	-8.27%	-20.24%	-26.94%	-36.37%
▼ Plomo (US\$ TM) (LME)	1,913.25	-1.66%	-6.80%	-8.44%	-18.16%
▼ Azúcar #11 (US\$ Libra) (NYB-ICE)	18.31	-0.27%	-2.24%	-7.71%	-0.27%
▼ Cacao (US\$ TM) (NYB-ICE)	2,432.00	-0.04%	-0.04%	-0.04%	-5.33%
▼ Café Arábica (US\$ TM) (NYB-ICE)	223.25	-2.51%	-1.82%	2.74%	-0.56%

\*Leyenda: Variación 1D: 1 Día; 5D: 5 Días; 1M: 1 Mes; YTD: Var.% 31/12/21 a la fecha

Principal Metals Index (3 months)



Base: 25/03/22=100  
Source: Bloomberg

## Equity

Germany (Stocks from DAX Index)

Largest gains	Curr.	Price	▲ %	Exchange	Largest losses	Curr.	Price	▼ %	Exchange
DBK GY	EUR	8.919	4.78	Xetra	BAYN GY	EUR	57.79	-1.28	Xetra
PUM GY	EUR	66.88	4.40	Xetra	CON GY	EUR	66.62	-1.16	Xetra
HNR1 GY	EUR	136.85	4.19	Xetra	PAH3 GY	EUR	64.8	-0.95	Xetra
1COV GY	EUR	34.48	4.14	Xetra	MBG GY	EUR	58.56	-0.03	Xetra

Europe (Stocks from STOXX EUROPE 600)

Largest gains	Curr.	Price	▲ %	Exchange	Largest losses	Curr.	Price	▼ %	Exchange
ADE NO	NOK	76.55	10.06	Oslo	LHA GY	EUR	5.966	-4.94	Xetra
UMG NA	EUR	20	9.29	EN Amsterdam	TUI LN	GBp	145.95	-3.85	Londres
GN DC	DKK	244.2	8.10	Copenhagen	FR FP	EUR	18.81	-3.54	EN Paris
REC IM	EUR	41.86	7.64	Borsa Italiana	RWE GY	EUR	37.42	-3.11	Xetra

## Global Overview:

### United States:

The U.S. market closed with positive returns after expectations of faster rate hikes cooled, although recession fears remain a major concern for investors. The DOW JONES index closed in positive territory, despite recent economic data pointing to slower economic activity sparking speculation that central banks could raise rates at a faster pace. The S&P500 index also ended with a significantly positive performance, after the University of Michigan consumer sentiment was revised down to a record low of 50 in June, as well as higher inflation for the year at 5.4%, and for the 5-year term increased slightly to 3.1%. Finally, the NASDAQ index posted positive results generated because Fed funds futures traders now expect the benchmark interest rate to rise to 3.5% in March, compared to last week's expectations for it to rise to 4%. Thus, DOW JONES +2.68%; S&P 500 +3.06%; NASDAQ +3.34% ended the day with positive results.

### Europe:

Major European indices ended the session with positive returns as investors began to reduce central bank tightening bets. The pan-European STOXX 600 index ended with gains, recovering from slowing Eurozone corporate growth. Consumers, worried about rising bills, had opted to stay at home and postpone purchases to save money. The British market, reflected in the FTSE 100, rose this session, in a context where the volume of British retail sales fell by 0.5% in May. Consumers reduced their purchases in the face of rapid inflation last month, and the increase in sales in April was revised downwards. Meanwhile, the DAX index closed in positive territory, in a context where the Minister of Economy declared a gas alert. In the event of a gas supply failure in Germany, its economy could face hard times. The French market rose this session, in a context where the Fed chairman declared that the institution's determination to lower prices was unconditional, while admitting that the fight against inflation was worsening. Thus, FTSE 100 +2.70%; CAC 40 -3.23%; DAX +1.59%; STOXX 600 +2.60% ended at positive levels.

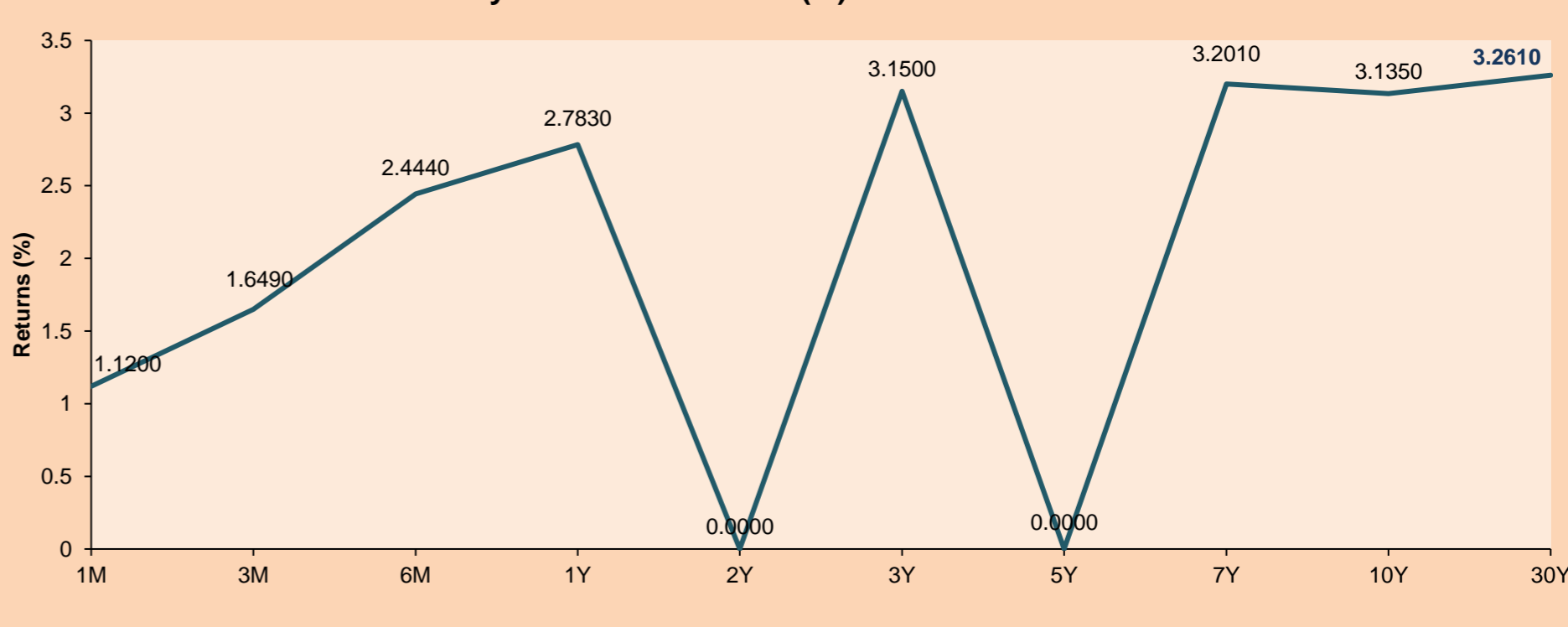
### Asia:

Major Asian indices closed with mostly positive returns. The Chinese market closed in positive territory, as commodity prices declined, after the People's Bank of China increased the banking system's capital to maintain stable liquidity at 60 trillion yuan. The Hang Seng index ended positive, in a scenario where the health secretary mentioned that he plans to reduce the quarantine to 5 days, but would still keep the zero covid dynamics. The South Korean market rose this session, despite manufacturing growth slowing as the COVID-19 curve and Russia's invasion of Ukraine have disrupted production chains and kept inflation at its highest in recent years. The Japanese market closed in positive territory, in a scenario where price consumption (which includes energy changes, but not food) rose by 2.1%, being above the inflation target for the second month in a row. The Australian market ended higher, in a context where Australia's central governor mentioned that interest rate hikes will be around a quarter point or half a point. The country seeks to maintain a low rate to avoid a possible recession. Thus, NIKKEI +1.23%; HANG SENG +2.09%; CSI 300 +1.17%; S&P/ASX 200 +0.77%; KOSPI +2.26%; SHANGAI COMPOSITE +0.89% ended with positive performances.

## ETFs

	Curr.	Close	1D	5D	30 D	YTD	Exchange
SPDR S&P 500 ETF TRUST	USD	390.08	3.18%	6.62%	-1.83%	-17.87%	NYSE Arca
ISHARES MSCI EMERGING MARKET	USD	40.65	2.37%	2.47%	-0.68%	-16.79%	NYSE Arca
ISHARES IBOXX HIGH YLD CORP	USD	75.04	0.71%	1.34%	-4.27%	-13.76%	NYSE Arca
FINANCIAL SELECT SECTOR SPDR	USD	32.34	3.69%	4.56%	-5.41%	-17.18%	NYSE Arca
VANECK GOLD MINERS ETF	USD	29.66	2.59%	-2.40%	-8.99%	-7.40%	NYSE Arca
ISHARES RUSSELL 2000 ETF	USD	175.09	3.10%	6.00%	-2.04%	-21.29%	NYSE Arca
SPDR GOLD SHARES	USD	170.09	-0.10%	-0.69%	-1.73%	-0.51%	NYSE Arca
ISHARES 20+ YEAR TREASURY BO	USD	112.56	-1.38%	0.43%	-5.67%	-24.04%	NASDAQ GM
INVESTCO QQQ TRUST SERIES 1	USD	294.61	3.43%	7.25%	1.15%	-25.95%	NASDAQ GM
ISHARES BIOTECHNOLOGY ETF	USD	120.04	1.72%	9.57%	4.59%	-21.35%	NASDAQ GM
ENERGY SELECT SECTOR SPDR	USD	71.59	1.32%	-2.59%	-16.75%	28.99%	NYSE Arca
PROSHARES ULTRA VIX ST FUTUR	USD	14.39	-2.70%	-11.12%	-5.82%	15.77%	Cboe BZX
UNITED STATES OIL FUND LP	USD	81.27	2.90%	-2.48%	-1.47%	49.50%	NYSE Arca
ISHARES MSCI BRAZIL ETF	USD	27.20	0.22%	-2.58%	-21.73%	-3.10%	NYSE Arca
SPDR S&P OIL & GAS EXP & PR	USD	121.99	1.20%	-5.81%	-17.37%	27.25%	NYSE Arca
UTILITIES SELECT SECTOR SPDR	USD	69.01	1.74%	6.38%	-6.74%	-3.59%	NYSE Arca
ISHARES US REAL ESTATE ETF	USD	94.04	2.13%	7.28%	-3.70%	-19.03%	NYSE Arca
SPDR S&P BIOTECH ETF	USD	77.06	1.09%	13.98%	13.78%	-31.17%	NYSE Arca
ISHARES IBOXX INVESTMENT GRA	USD	110.09	0.12%	0.60%	-3.99%	-16.93%	NYSE Arca
ISHARES JP MORGAN USD EMERGI	USD	86.49	0.13%	0.65%	-5.24%	-20.70%	NASDAQ GM
REAL ESTATE SELECT SECT SPDR	USD	41.81	2.17%	6.99%	-4.19%	-19.30%	NYSE Arca
ISHARES CHINA LARGE-CAP ETF	USD	33.84	2.73%	5.00%	14.48%	-7.49%	NYSE Arca
CONSUMER STAPLES SPDR	USD	72.85	1.96%	5.84%	-0.70%	-5.52%	NYSE Arca
VANECK JUNIOR GOLD MINERS	USD	35.58	3.73%	-3.21%	-10.63%	-15.14%	NYSE Arca
SPDR BLOOMBERG HIGH YIELD BO	USD	92.65	0.67%	1.10%	-4.38%	-14.66%	NYSE Arca
VANGUARD REAL ESTATE ETF	USD	93.12	2.13%	6.18%	-4.55%	-19.73%	NYSE Arca
GRAYSCALE BITCOIN TRUST BTC	USD	13.85	1.17%	11.07%	-27.37%	-59.56%	OTC US

USA Treasury Bonds Yield Curve (%)



Source: Bloomberg

# LIMA

## Stocks

	Ticker	Currency	Price	1D*	5D*	30D*	YTD*	Frequency	Volume (US\$)	Beta	Dividend Yield (%)	Price Earning	Market Cap. (M US\$)	Economic Sector*	Index Weight
▲	ALICORC1 PE**	S/.	5.20	0.23%	-3.94%	-5.91%	-11.16%	100.00%	111,873	0.81	16.06	11.65	1,170.05	Industrial	3.53%
-	ATACOCB1 PE**	S/.	0.09	0.00%	-10.00%	-10.00%	-25.00%	25.00%	4,944	1.00	0.00	-	24.51	Mining	1.02%
▼	BACKUS1 PE**	S/.	21.00	-1.41%	-4.55%	-2.28%	2.44%	95.00%	48,157	0.79	16.33	7.44	7,547.91	Industrial	0.82%
▲	BAP PE**	US\$	125.00	1.21%	0.08%	-10.39%	0.99%	100.00%	223,744	1.30	3.20	-	9,940.00	Diverse	5.82%
▲	BVN PE**	US\$	7.10	3.65%	-3.40%	-16.47%	-2.74%	100.00%	157,711	1.39	0.99	-	1,957.01	Mining	5.88%
▲	CASAGRC1 PE**	S/.	7.65	7.75%	-4.38%	9.13%	-15.93%	90.00%	37,387	1.17	70.61	4.58	170.09	Agricultural	1.31%
-	BBVAC1 PE**	S/.	1.59	0.00%	-10.17%	6.00%	-12.15%	100.00%	4,445	0.81	7.26	6.29	2,836.47	Finance	2.85%
▲	CORARE1 PE**	S/.	1.33	2.31%	-7.64%	-10.14%	-22.67%	75.00%	17,739	0.82	19.29	2.32	576.66	Industrial	1.72%
▲	CPACASC1 PE**	S/.	3.75	3.59%	-6.25%	-6.25%	-24.24%	95.00%	182,136	0.76	21.07	10.28	454.75	Industrial	2.38%
▲	CVERDEC1 PE**	US\$	28.20	1.08%	-0.91%	-5.21%	-24.25%	100.00%	3,586,010	0.88	6.58	7.62	9,871.58	Mining	5.25%
▲	ENGEPEC1 PE**	S/.	2.12	6.00%	5.47%	14.59%	2.42%	85.00%	136,241	0.79	14.80	7.83	1,340.53	Public Services	1.44%
-	ENDISPC1**	S/.	3.80	0.00%	0.00%	2.70%	-5.00%	25.00%	11,302	0.85	0.00	6.82	640.50	Public Services	0.98%
-	FERREYC1 PE**	S/.	2.10	0.00%	0.48%	0.00%	2.44%	100.00%	129,518	0.93	11.36	4.04	524.41	Diverse	4.90%
▲	AENZAC1 PE**	S/.	0.94	4.44%	-8.74%	-8.74%	-31.39%	95.00%	2,980	0.96	0.00	-	296.99	Diverse	4.05%
▼	IFS PE**	US\$	23.40	-0.43%	-6.44%	-11.86%	-12.85%	90.00%	28,542	0.97	10.26	-	2,700.78	Diverse	7.22%
▲	INRETC1 PE**	US\$	25.60	0.59%	-10.83%	-16.07%	-26.75%	95.00%	94,776	0.77	5.35	16.98	2,783.92	Diverse	5.28%
-	LUSURC1 PE**	S/.	15.80	0.00%	-1.25%	13.67%	10.96%	70.00%	42	0.00	0.00	13.10	2,030.84	Public Services	1.81%
▼	MINSURI1 PE**	S/.	3.78	-0.53%	-13.10%	-15.06%	-4.30%	100.00%	124,190	1.11	9.35	1.42	2,876.53	Mining	3.09%
-	PML PE**	US\$	0.13	0.00%	0.00%	18.18%	8.33%	20.00%	1,300	1.13	0.00	-	34.37	Mining	2.12%
▲	SCCO PE**	US\$	51.37	4.24%	-7.17%	-15.83%	-16.85%	95.00%	255,930	1.02	8.08	11.17	39,713.64	Industrial	2.12%
▼	SIDERC1 PE**	S/.	1.36	-1.45%	-5.56%	-2.86%	-15.00%	75.00%	160,018	0.71	46.10	3.17	251.29	Mining	2.14%
-	TV PE**	US\$	0.40	0.00%	-11.11%	-23.08%	-69.23%	70.00%	66,170	1.30	0.00	-	39.58	Industrial	1.43%
▲	UNACEMC1 PE**	S/.	1.51	0.67%	-6.21%	-3.21%	-37.08%	100.00%	1,594	1.05	7.28	-	724.66	Mining	2.93%
▲	VOLCABC1 PE**	S/.	0.57	5.56%	-3.39%	-5.00%	-5.00%	100.00%	60,194	1.16	0.00	7.59	613.34	Industrial	3.00%
-	BROCALC1 PE**	S/.	5.10	0.00%	-13.56%	-27.14%	-1.92%	20.00%	4,118	0.00	0.00	36.44	218.75	Mining	5.90%
#####	RIMSEGC1 PE**	S/.	#N/A N/A	#¡VALOR!	#¡VALOR!	0.00%	#¡VALOR!	0.00%	438	0.00	0.00	-	#¡VALOR!	Finance	3.09%
-	CORAREC1 PE**	US\$	2.18	0.00%	0.00%	2.83%	14.74%	70.00%	43,600	0.00	11.77	3.84	2,184.67	Mining	2.12%
-	ENGIEC1 PE**	S/.	5.60	0.00%	0.00%	-1.41%	-4.44%	20.00%	4,442	0.53	0.00	14.46	888.92	Diversas	2.12%
-	GBVLAC1 PE**	S/.	2.40	0.00%	0.00%	-0.83%	-11.76%	25.00%	27,071	0.00	0.00	24.84	115.35	Diversas	2.14%

Quantity of shares: 28  
Source: Bloomberg, Economática  
\* Bloomberg Industry Classification System  
\*\* PER is used in the stock market and original currency of the instrument

Up 13  
Down 4  
Hold 11

\*Legend: Variation 1D: 1 Day; 5D: 5 Days, 1M: 1 Month; YTD: Var.% 12/31/21 to date

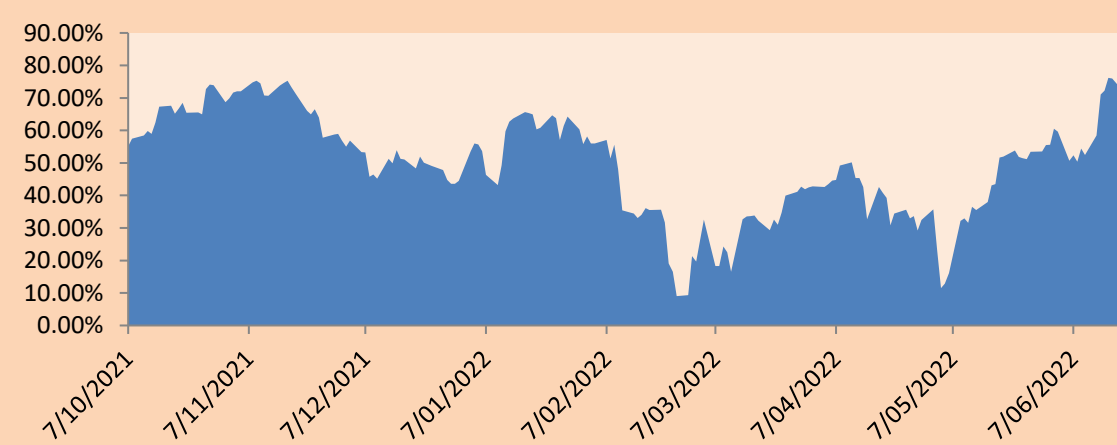
### Sectorial Indices

		Close	1D*	5D*	30D*	YTD*	Beta
▲	S&P/BVLMining	341.91	4.02%	-4.81%	-12.61%	-16.93%	1.05
▲	S&P/BVLConsumer	976.97	0.76%	-5.99%	-4.38%	-14.90%	0.54
▲	S&P/BVLIndustrials	221.57	1.08%	-3.47%	-2.50%	-14.14%	0.73
▲	S&P/BVLFinancials	881.96	1.51%	0.72%	-7.71%	-2.66%	1.34
▲	S&P/BVLConstruction	220.99	1.59%	-5.24%	-3.65%	-22.02%	0.67
▲	S&P/BVLPublicSvcs	552.06	1.87%	1.71%	3.99%	0.65%	0.09
▲	S&P/BVLElectricUtil	538.94	1.87%	1.71%	3.99%	0.65%	0.09

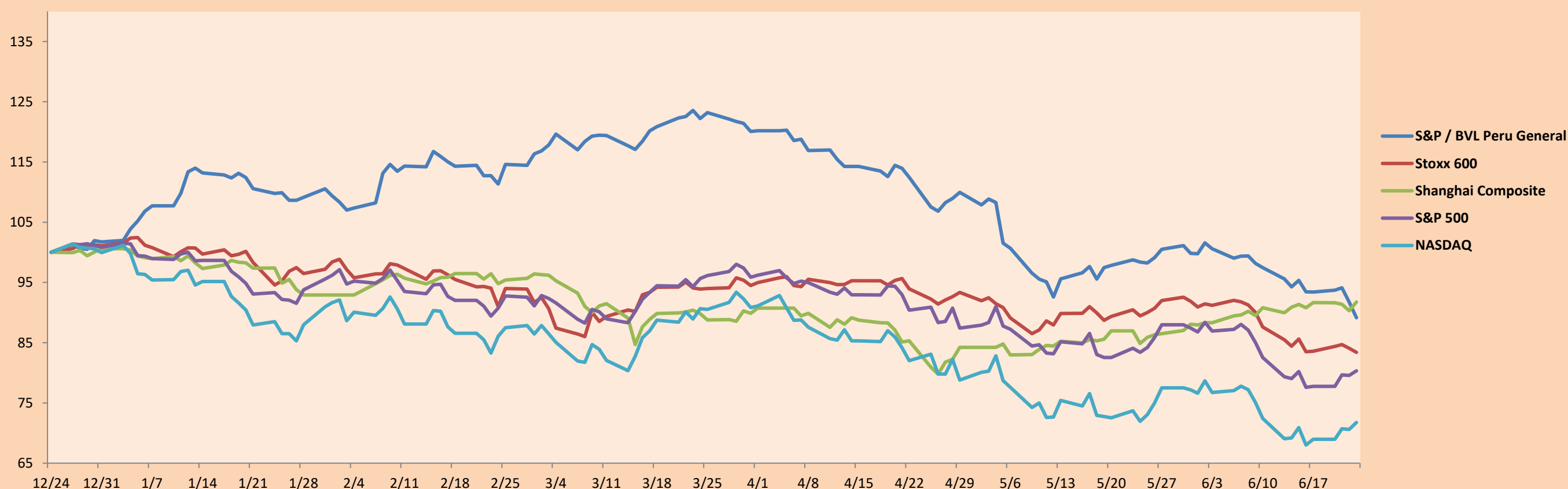
S&P/BVLConstructionTRPEN

\*Legend: Variation 1D: 1 Day; 5D: 5 Days, 1M: 1 Month; YTD: Var.% 12/31/21 to date

Correlation Graph of Returns of Mining Index against Metallic Index of London (3 months)



Indices (6 months)



Base: 24/12/21=100  
Source: Bloomberg

Capital Market Laboratory Coordinator: MS Javier Penny Pestana  
Collaboration: Sebastian Ore, Fabrizio Lavalle, Miguel Solimano y Jhonatan Cueva  
email: pulsobursatil@ulima.edu.pe  
facebook: www.facebook.com/pulsobursatil.ul

## SOVEREIGN RATING

### RISK RATINGS

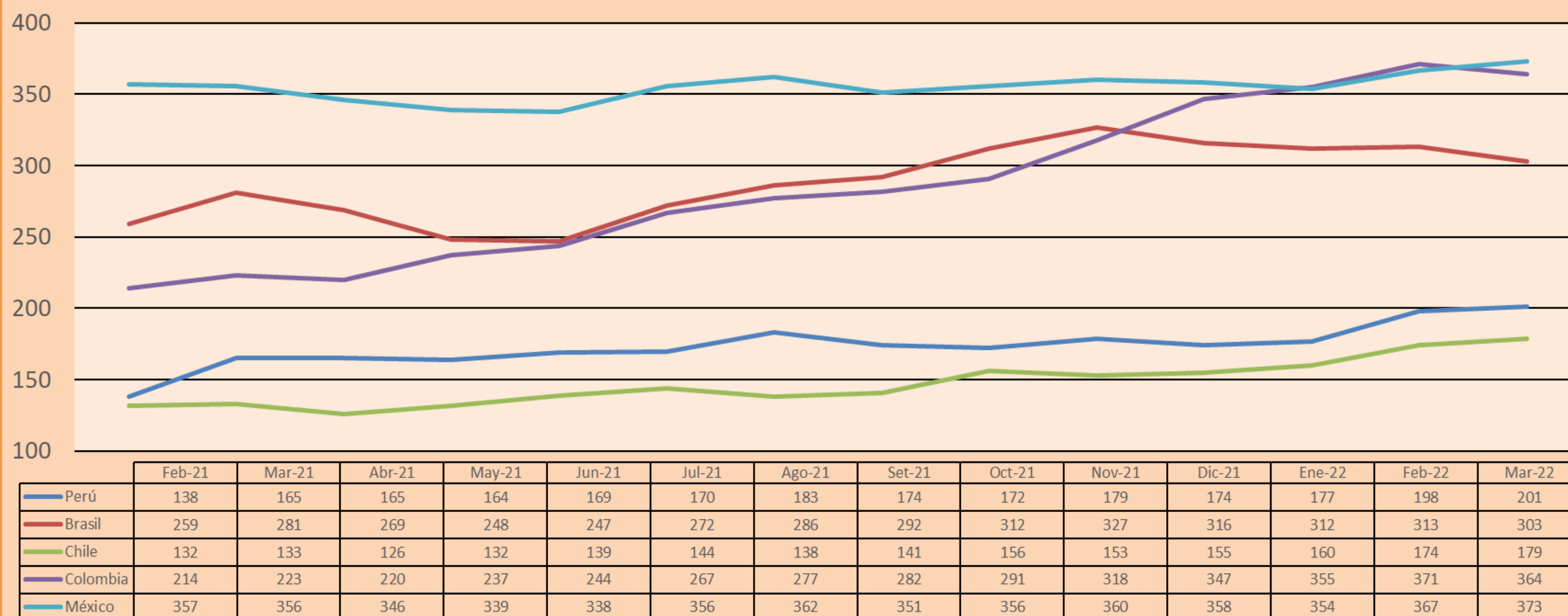
Moody's	S&P	Fitch	
Aaa	AAA	AAA	Prime
Aa1	AA+	AA+	High credit quality
Aa2	AA	AA	
Aa3	AA-	AA-	
A1	A+	A+	Medium-high grade, with low credit risk
A2	A	A	
A3	A-	A-	
Baa1	BBB+	BBB+	Moderate Credit Risk
Baa2	BBB	BBB	
Baa3	BBB-	BBB-	
Ba1	BB+	BB+	It has speculative elements and it is subject to substantial credit risk
Ba2	BB	BB	
Ba3	BB-	BB-	
B1	B+	B+	It is considered speculative and it has high credit risk
B2	B	B	
B3	B-	B-	
Caa1	CCC+	CCC	
Caa2	CCC	CCC	
Caa3	CCC-	CCC	
Ca	CC	CC	Very close to default or in default
	C	C	
C	D	DDD DD D	

Source: Bloomberg

Latin America Credit Rating			
Clasificadora de riesgo			
Country	Moody's	Fitch	S&P
Peru	Baa1	BBB	BBB
México	Ba2	BB-	BB-
Venezuela	C	WD	NR
Brazil	Ba2	BB-	BB-
Colombia	Baa2	BB+	BB+
Chile	A1	A-	A
Argentine	Ca	WD	CCC+
Panama	Baa2	BBB-	BBB

Source: Bloomberg

## LATAM Country Risk(bps)



Source: BCRP

Capital Market Laboratory Coordinator: MS Javier Penny Pestana  
Collaboration: Sebastian Ore, Fabrizio Lavalle, Miguel Solimano y Jhonatan Cueva  
email: pulsobursatil@ulima.edu.pe  
facebook: www.facebook.com/pulsobursatil.ul