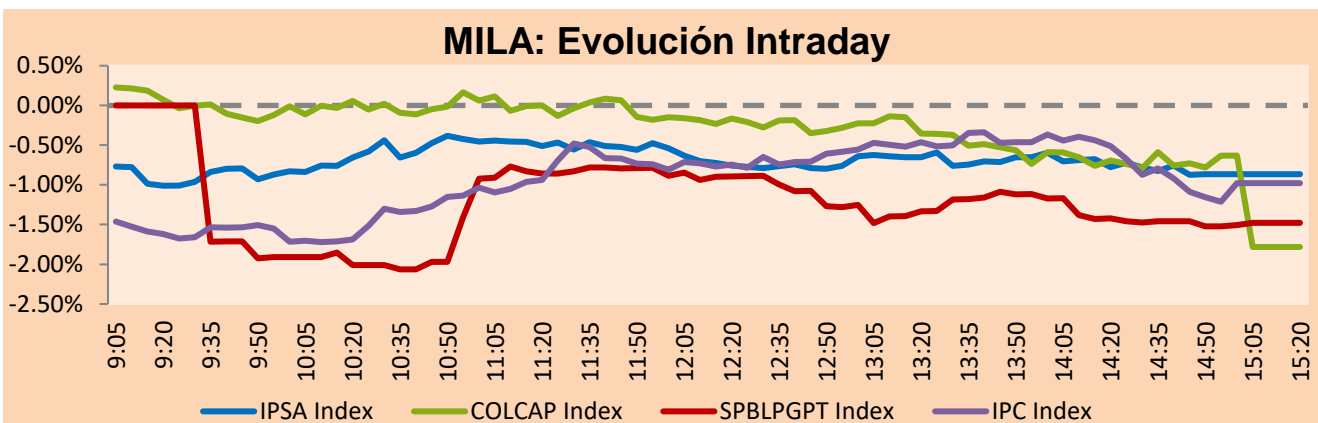


MILA

Lima, June 30, 2022

Main Indexes	Close	1 D	5 D	1 M	YTD	Cap. Burs. (US\$ bill)
▼ IPSA (Chile)	4,950.39	-1.18%	-2.10%	-7.48%	14.90%	94.71
▼ IGPA (Chile)	26,000.40	-1.05%	-2.57%	-7.81%	20.56%	109.33
▲ COLSC (Colombia)	867.61	1.41%	-0.50%	-8.48%	-10.84%	5.40
▼ COLCAP (Colombia)	1,322.88	-1.78%	-3.59%	-17.49%	-6.24%	66.88
▼ S&P/BVL (Perú)*	18,388.82	-1.53%	-3.41%	-11.25%	-12.90%	82.16
▼ S&P/BVL SEL (Perú)	483.22	-0.71%	-2.95%	-10.40%	-14.26%	73.11
▼ S&P/BVL LIMA 25	26,132.13	-1.31%	-3.56%	-8.50%	-13.68%	81.35
▼ IPC (México)	47,524.45	-1.12%	1.86%	-8.17%	-10.79%	304.02
▼ S&P MILA 40	444.21	-1.54%	-3.65%	-18.33%	-0.14%	6,116.41

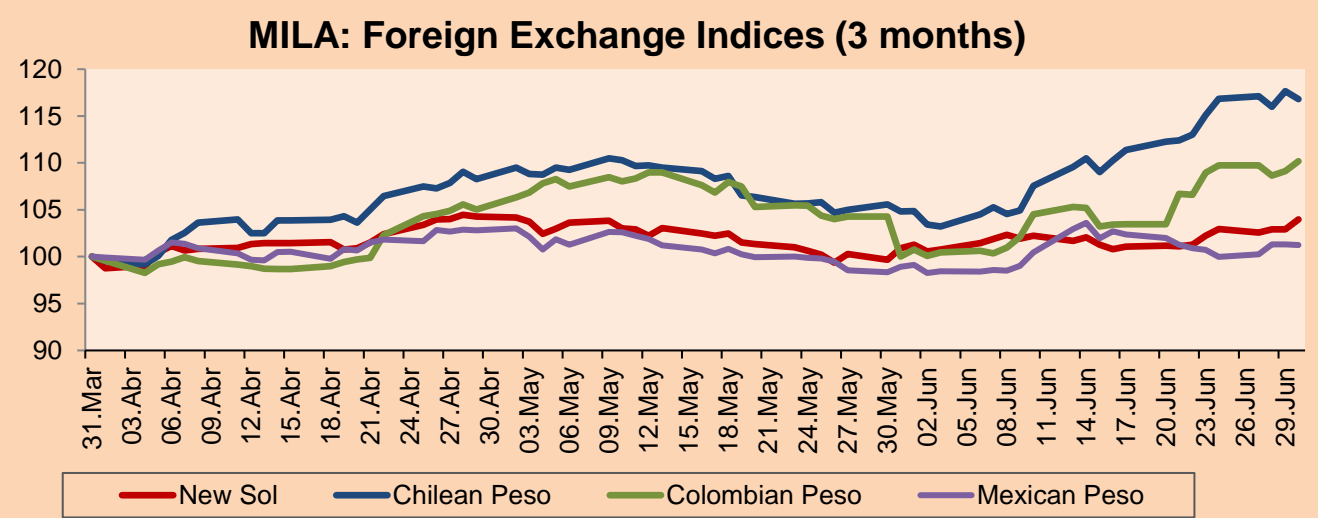
*Legend: Variation 1D: 1 day; 5D: 5 days; 1M: 1 Month; YTD: Var% 12/31/21 to date



Source: Bloomberg

Currency	Price	1D*	5D*	30 D*	YTD*
▲ Sol (PEN)	3,8255	1.01%	1.69%	3.00%	-4.34%
▼ Chilean Peso (CLP)	918.08	-0.73%	1.48%	11.43%	7.76%
▲ Colombian Peso (COP)	4,155.11	0.96%	1.14%	10.15%	1.83%
▼ Mexican Peso (MXN)	20.12	-0.05%	0.51%	2.35%	-2.00%

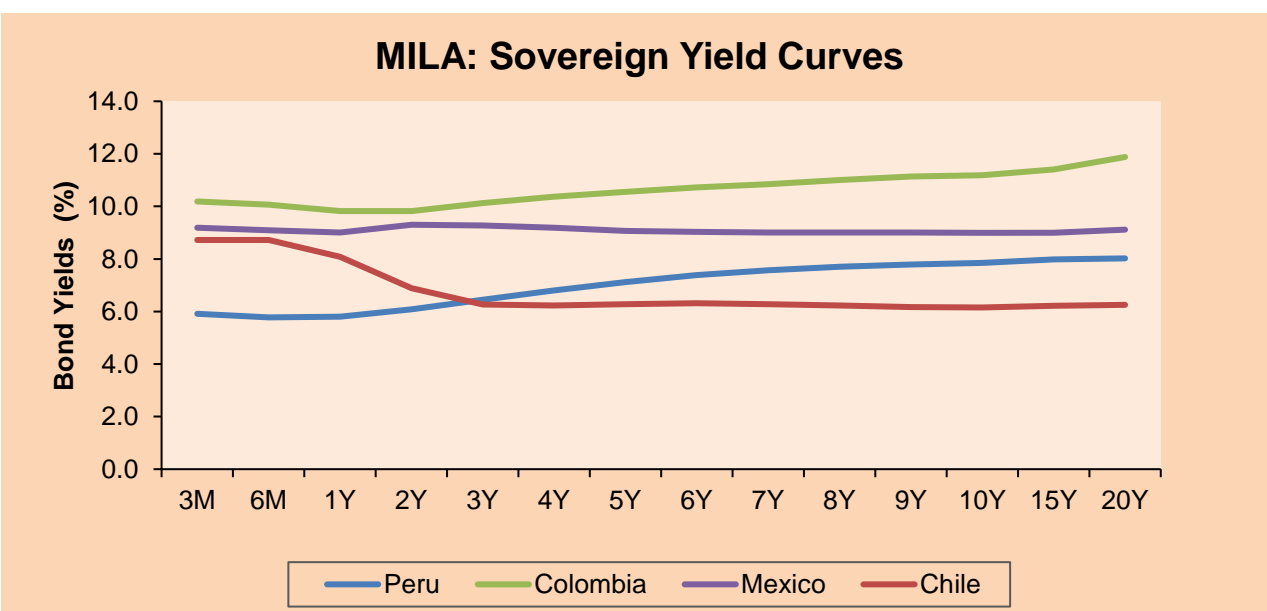
*Legend: Variation 1D: 1 day; 5D: 5 days; 1M: 1 Month; YTD: Var% 12/31/21 to date



Base: 31/03/22=100

Source: Bloomberg

Fixed Income	Currency	Price	Bid Yield (%)	Ask Yield (%)	Duration
PERU 7.35 07/21/25	USD	108.073	4.55	4.42	2.66
PERU 4.125 08/25/27	USD	98.136	4.57	4.50	4.52
PERU 8.75 11/21/33	USD	127.139	5.55	5.46	7.63
PERU 6.55 03/14/37	USD	109.471	5.63	5.56	9.05
PERU 5.625 11/18/2050	USD	103.989	5.37	5.33	14.16
CHILE 2.25 10/30/22	USD	99.955	2.98	1.79	0.33
CHILE 3.125 01/21/26	USD	96.844	4.15	4.03	3.28
CHILE 3.625 10/30/42	USD	80.636	5.21	5.15	13.48
COLOM 11.85 03/09/28	USD	139.747	4.03	3.89	4.34
COLOM 10.375 01/28/33	USD	118.969	7.83	7.60	6.49
COLOM 7.375 09/18/37	USD	92.62	8.28	8.19	8.59
COLOM 6.125 01/18/41	USD	78.505	8.47	8.41	9.61
MEX 4 10/02/23	USD	78.505	8.466	8.411	9.61
MEX5.55 01/45	USD	91.952	6.24	6.20	12.00



Source: Bloomberg

Equity

Largest gains	Exchange	Currency	Price	▲%	Largest losses	Exchange	Currency	Price	▼%
GRUPO ELEKTRA SA	Mexico	MXN	1160.23	5.03	VOLCAN CIA MIN-B	Peru	PEN	0.5	-7.41
SONDA SA	Chile	CLP	274.80	2.35	GRUPO TELEV-CPO	Mexico	MXN	33.01	-5.47
INRETAIL PERU CO	Peru	USD	25.75	2.18	BANCOLOMBIA-PREF	Colombia	COP	31700	-4.72
CONCHATORO	Chile	CLP	1255.00	1.88	GRUPO AEROPORTU	Mexico	MXN	128.62	-4.28
FALABELLA SA	Chile	CLP	2150.00	1.42	SOUTHERN COPPER	Peru	USD	49.59	-4.17

Per Turnover	Exchange	Amount (US\$)	Per Volume	Exchange	Volume
AMERICA MOVIL-L	Mexico	71,798,363	ITAU CORPBANCA	Chile	1,701,454,325
GRUPO F BANORT-O	Mexico	70,122,376	ENEL AMERICAS SA	Chile	129,695,671
WALMART DE MEXIC	Mexico	69,442,647	ENEL CHILE SA	Chile	116,073,394
GRUPO MEXICO-B	Mexico	34,015,300	BANCO DE CHILE	Chile	102,314,253
SOQUIMICH-B	Chile	33,958,261	BANCO SANTANDER	Chile	101,330,023

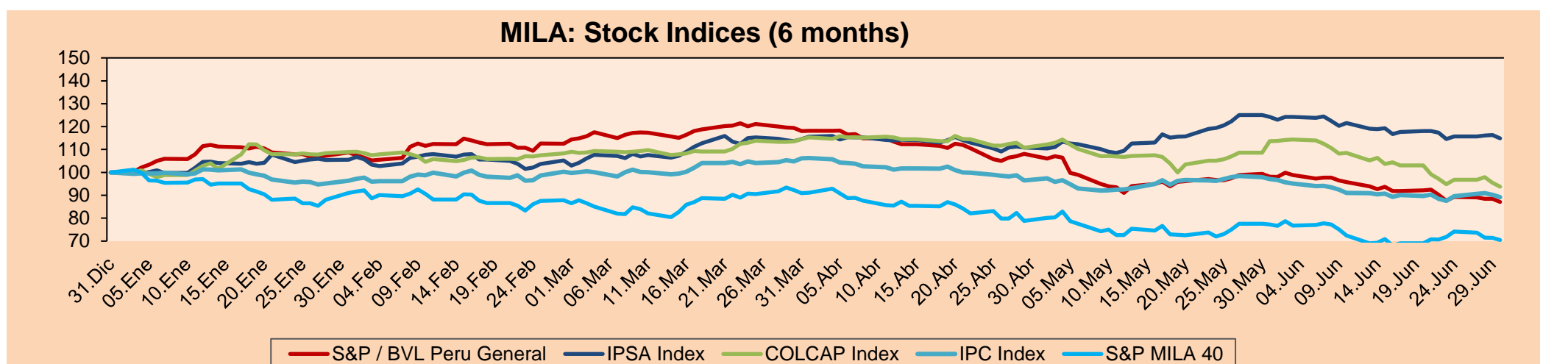
MILA

Peru: The LSE General index ended today's session with a negative result of -1.53%. The index maintains a negative annual cumulative trend of -12.90% in local currency, while the dollar-adjusted performance amounted to -8.94%. Then, the S&P/BVL Peru SEL varied -0.71% while the S&P/BVL LIMA 25 varied -1.31%. The PEN spot reached 5/3.8255. Headline: Covid-19: Peru's fourth wave started with more than 11,000 weekly cases.

Chile: The IPSA index ended the day with a negative return -1.18%. The most negatively affected sectors of the day were Industrials (-1.80%) and Financials (-1.71%). The worst performing stocks were CAP SA (-3.83%) and Quinenco SA (-3.02%). Headline: Natural gas guild warns: "If the decrease in profitability is successful, it will seriously affect the future growth of the industry".

Colombia: The COLCAP index ended the session with a negative return of -1.78%. The most negatively affected sectors of the day were Finance (-2.91%) and Utilities (-1.33%). The worst performing stocks were Bancolombia (-4.72%) and Interconexión Eléctrica SA ESP (-3.30%). Headline: Colombia raises interest rates to 150 basis points in a test for Petro.

Mexico: The IPC index closed the day in negative territory at -1.12%. The sectors that lost the most during the day were Industrials (-2.63%) and Materials (-2.34%). The worst performing stocks were Grupo Televisa SA (-5.47%) and Controladora Vuela Cia de Avia (-4.65%). Headline: Mexico reports 58.5 billion pesos as budget deficit between January and May. Translated with www.DeepL.com/Translator (free version)

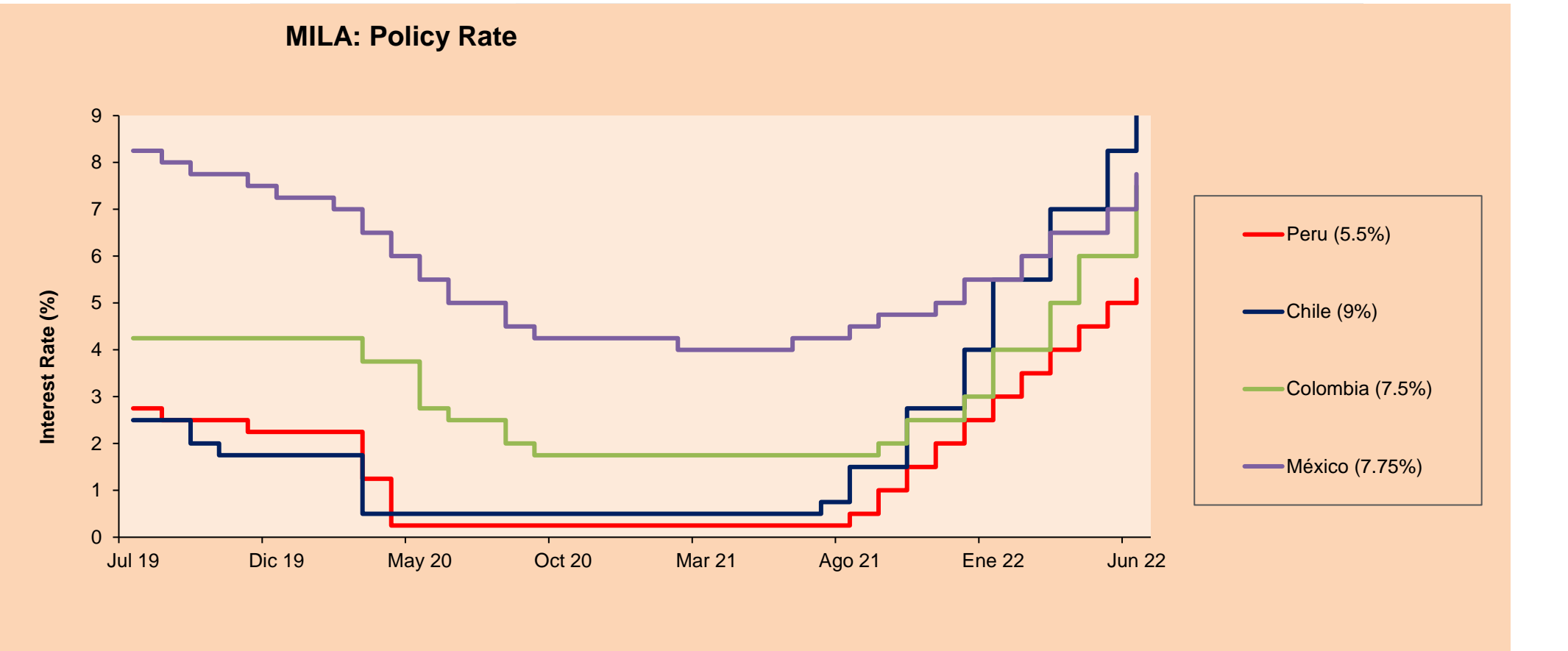


Base: 03/01/22=100

Source: Bloomberg

ETFs

ETFs	Curr.	Close	1D	5D	30 D	YTD	Exchange
▼ iShares MSCI All Peru Caped Index Fund	USD	25.52	-3.30%	-1.66%	-17.57%	-13.84%	NYSE Arca
▼ iShares MSCI All Chile Caped Index Fund	USD	24.07	-0.66%	-1.67%	-20.77%	4.24%	Cboe BZX
▼ Global X MSCI Colombia	USD	9.0131	-1.67%	-0.07%	-25.17%	-9.81%	NYSE Arca
▼ iShares MSCI Mexico Capped	USD	46.59	-0.36%	1.97%	-10.52%	-7.92%	NYSE Arca
▼ iShares MSCI Emerging Markets	USD	40.1	-0.47%	0.98%	-5.96%	-17.91%	NYSE Arca
▼ Vanguard FTSE Emerging Markets	USD	41.65	-0.43%	0.82%	-4.56%	-15.79%	NYSE Arca
▼ iShares Core MSCI Emerging Markets	USD	49.06	-0.49%	0.86%	-6.68%	-18.04%	NYSE Arca
▼ iShares JP Morgan Emerging Markets Bonds	USD	55.43	-0.16%	1.32%	-4.78%	-11.76%	Cboe BZX
▲ Morgan Stanley Emerging Markets Domestic	USD	4.49	1.35%	-0.66%	-3.85%	-18.07%	New York



Source: Bloomberg

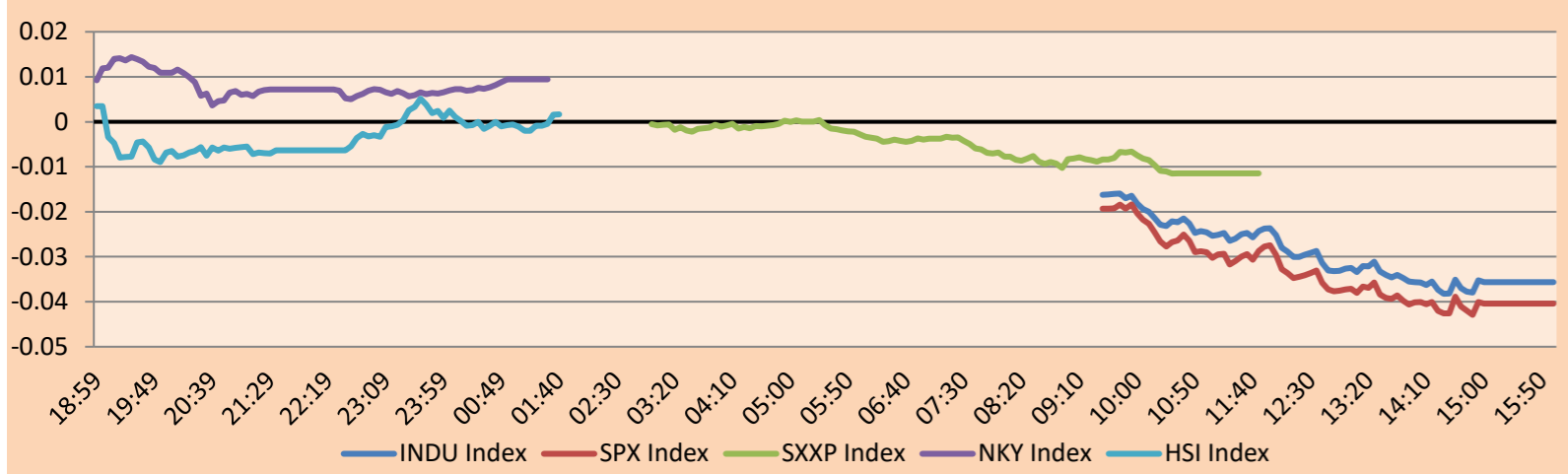
Capital Market Laboratory Coordinator: MS Javier Penny Pestana
Collaboration: Sebastian Ore, Fabrizio Lavalle, Miguel Solimano y Jhonatan Cueva
email: pulsobursatil@ulima.edu.pe
facebook: www.facebook.com/pulsobursatil.ul

WORLD

Main Indices	Close	1 D*	5 D*	1 M*	YTD*	Market Cap. (US\$ Mill.)
▼ Dow Jones (USA)	30,775.43	-0.82%	0.32%	-6.71%	-15.31%	9,721,480
▼ Standard & Poor's 500 (EEUU)	3,785.38	-0.88%	-0.27%	-8.39%	-20.58%	33,557,791
▼ NASDAQ Composite (USA)	11,028.74	-1.33%	-1.81%	-8.71%	-29.51%	19,121,699
▼ Stoxx EUROPE 600 (Europe)	407.20	-1.50%	1.19%	-8.15%	-16.52%	10,890,841
▼ DAX (Germany)	12,783.77	-1.69%	-1.00%	-11.15%	-19.52%	1,297,615
▼ FTSE 100 (United Kingdom)	7,169.28	-1.96%	2.12%	-5.76%	-2.92%	1,652,493
▼ CAC 40 (France)	5,922.86	-1.80%	0.67%	-8.44%	-17.20%	1,854,556
▼ IBEX 35 (Spain)	8,098.70	-1.09%	-0.09%	-8.50%	-7.06%	520,451
▼ MSCI AC Asia Pacific Index	159.64	-1.52%	2.08%	-5.82%	-17.34%	22,036,525
▼ HANG SENG (Hong kong)	21,859.79	-0.62%	2.75%	2.65%	-6.57%	3,497,937
▲ SHANGHAI SE Comp. (China)	3,398.62	1.10%	2.36%	6.80%	-6.63%	6,927,140
▼ NIKKEI 225 (Japan)	26,393.04	-1.54%	0.85%	-3.88%	-8.33%	3,343,845
▼ S&P / ASX 200 (Australia)	6,568.06	-1.97%	0.61%	-9.21%	-11.77%	1,504,895
▼ KOSPI (South Korea)	2,332.64	-1.91%	0.79%	-13.15%	-21.66%	1,365,516

*Legend: Variation 1D: 1 Day; 5D: 5 Days; 1M: 1 Month; YTD: Var.% 12/31/21 to date

Market Evolution Intraday (var %)

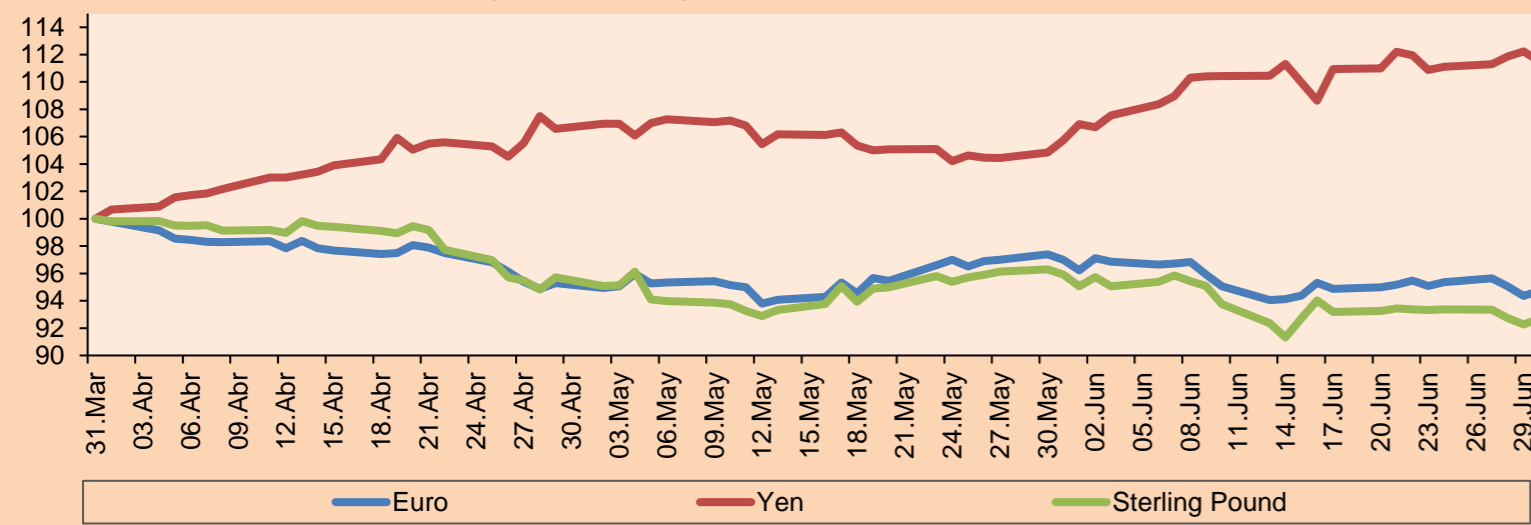


Source: Bloomberg

Currency	Price	1 D*	5 D*	1 M*	YTD*
▲ Euro	1.0484	0.40%	-0.37%	-2.33%	-7.79%
▼ Yen	135.7200	-0.64%	0.57%	5.48%	17.94%
▲ Sterling Pound	1.2178	0.45%	-0.67%	-3.36%	-10.01%
▼ Yuan	6.6993	-0.02%	0.00%	0.41%	5.40%
▼ Hong Kong Dollar	7.8463	-0.01%	-0.05%	-0.01%	0.64%
▲ Brazilian Real	5.2575	1.46%	0.33%	11.07%	-5.71%
▲ Argentine Peso	125.2160	0.14%	0.90%	4.18%	21.88%

*Legend: Variation 1D: 1 Day; 5D: 5 Days; 1M: 1 Month; YTD: Var.% 12/31/21 to date

Foreign Exchange Indices (3 months)

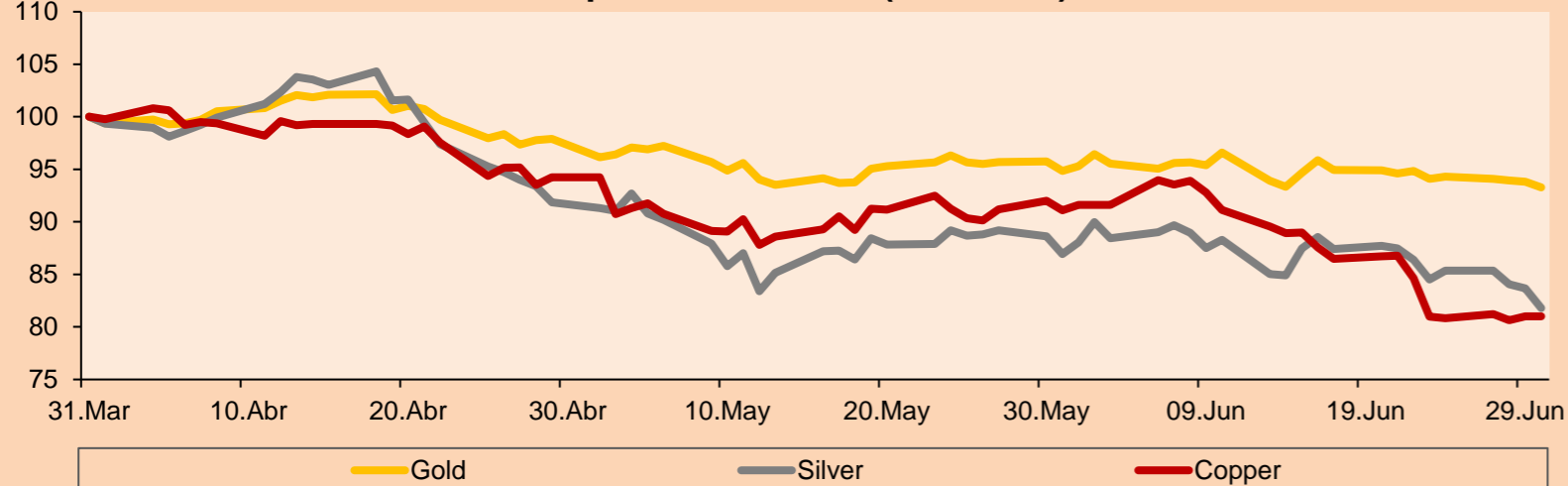


Base: 31/03/22=100
Source: Bloomberg

Commodities	Close	1 D*	5 D*	1 M*	YTD*
▼ Oro (US\$ Oz. T) (LME)	1,807.27	-0.58%	-0.85%	-1.64%	-1.20%
▼ Plata (US\$ Oz. T) (LME)	20.28	-2.24%	-3.22%	-5.90%	-13.00%
- Cobre (US\$ TM) (LME)	8,399.25	0.00%	0.03%	-11.08%	-13.77%
- Zinc (US\$ TM) (LME)	3,392.30	0.00%	-8.55%	-13.88%	-5.51%
▼ Petróleo WTI (US\$ Barril) (NYM)	105.76	-3.66%	1.43%	-5.50%	46.54%
- Estaño (US\$ TM) (LME)	27,125.00	0.00%	-0.70%	-22.36%	-31.11%
- Plomo (US\$ TM) (LME)	1,923.30	0.00%	-1.14%	-11.52%	-17.73%
▼ Azúcar #11 (US\$ Libra) (NYB-ICE)	18.50	-0.05%	0.76%	-5.47%	0.76%
▼ Cacao (US\$ TM) (NYB-ICE)	2,340.00	-1.10%	-3.82%	-6.96%	-8.91%
▲ Café Arábica (US\$ TM) (NYB-ICE)	230.10	0.81%	0.48%	-0.58%	2.49%

*Leyenda: Variación 1D: 1 Día; 5D: 5 Días; 1M: 1 Mes; YTD: Var.% 31/12/21 a la fecha

Principal Metals Index (3 months)



Base: 31/03/22=100
Source: Bloomberg

Equity

Germany (Stocks from DAX Index)

Largest gains	Curr.	Price	▲%	Exchange	Largest losses	Curr.	Price	▼%	Exchange
MTX GY	EUR	173.7	0.40	Xetra	MBG GY	EUR	55.22	-4.13	Xetra
MUV2 GY	EUR	224.2	0.40	Xetra	PAH3 GY	EUR	63.12	-4.10	Xetra
AIR GY	EUR	92.44	0.31	Xetra	IFX GY	EUR	23.09	-3.41	Xetra
MRK GY	EUR	161	0.12	Xetra	HEI GY	EUR	45.84	-3.33	Xetra

Europe (Stocks from STOXX EUROPE 600)

Largest gains	Curr.	Price	▲%	Exchange	Largest losses	Curr.	Price	▼%	Exchange
KOG NO	NOK	353	4.56	Oslo	AUTO NO	NOK	14	-13.79	Oslo
SAABB SS	SEK	422.6	4.09	Stockholm	AT1 GY	EUR	3.033	-10.48	Xetra
CLN SE	CHF	18.18	3.30	SIX Swiss Ex	NHY NO	NOK	55.16	-9.43	Oslo
ORNBV FH	EUR	42.6	3.05	Helsinki	STORB SS	SEK	14.47	-9.14	Stockholm

Global Overview:

United States:

The U.S. market closes with negative returns. The DOW JONES index closed in negative territory as investors' expectations were pessimistic today due to a poor performance of the last quarter in the stock market. In line with these expectations, today's economic data releases further fueled these fears on lower disposable income, slowing consumer spending, still elevated inflation and higher than expected jobless claims reports. On top of this, yesterday's 2022Q1 quarterly annualized GDP was released, showing a contraction of 1.6%, higher than the expected 1.5%. The S&P500 index also ended with a slightly negative performance as fears of a recession still linger in investors' decisions and this caused the markets to fall today. Specifically, the core inflation index settled at 4.7% for last May. Finally, the NASDAQ index was the most affected, as the release of quarterly reports is approaching and technology companies are expected to have been the hardest hit by the increase in interest rates in line with the Federal Reserve's increased restrictions. Also, the Fed's Atlanta department presented its 2022Q2 GDP estimates, changing its forecast from +0.3% earlier in the week to a current -1%. Thus, DOW JONES -0.82%; S&P 500 -0.88%; NASDAQ -1.33% ended the day with negative results.

Europe:

The main European indices ended the session with negative returns during a context marked by investors' fears after increased probabilities of a global recession due to central banks' measures to try to control inflation. The FTSE 100 also closed with negative returns, despite the fact that the British economy expanded by 0.8% in the first quarter, as initially expected, but investment was revised downwards, falling by 0.6% quarter-on-quarter. Regarding the German market, the DAX index closed the session with a drop, despite retail sales rising by 0.6%, recovering moderately as price increases weigh on consumer affordability. Finally, the French market also closed lower, in a scenario where the government cut its economic growth projection on Tuesday, after inflation hit a new record high largely impacted by the cost of food and energy settling at 6.5% and thus increased pressure on President Emmanuel Macron and ECB to take measures to contain the impact on businesses and households. Thus, FTSE 100 -1.96%; CAC 40 -1.80%; DAX -1.69%; STOXX 600 -1.50% ended with positive results.

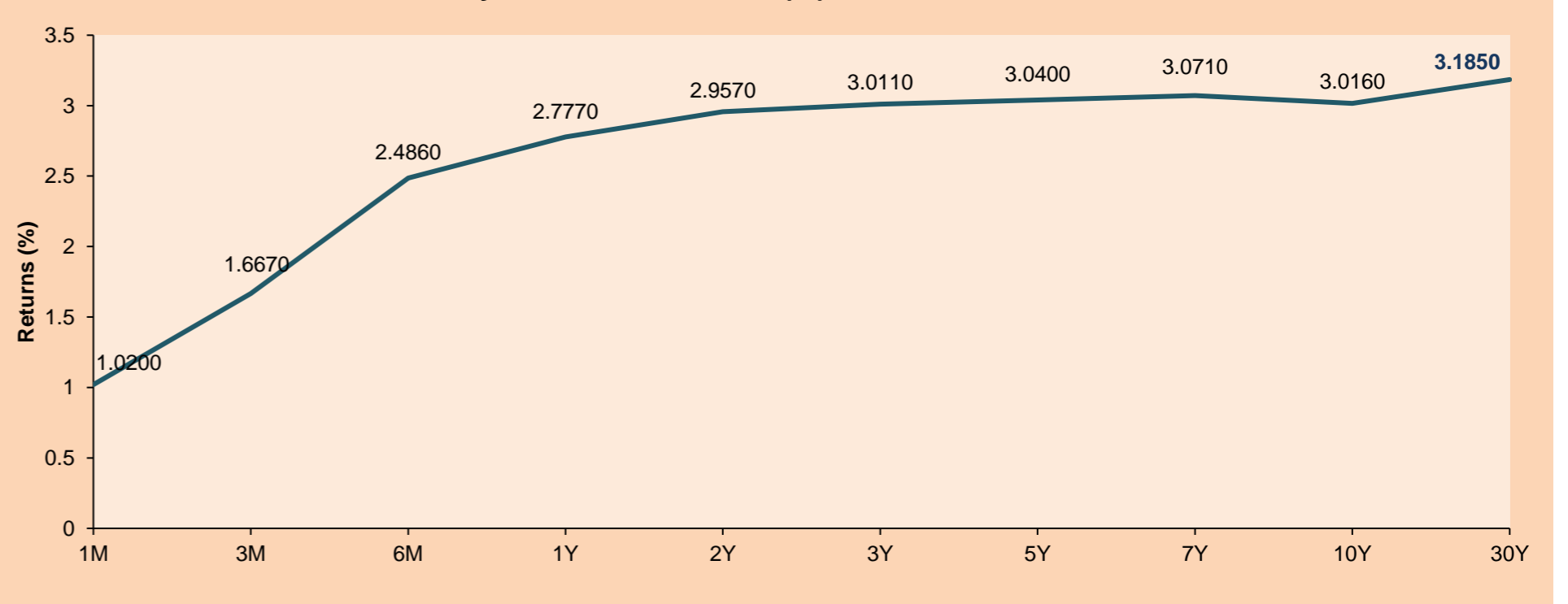
Asia:

Major Asian indices closed with mostly negative returns, extending yesterday's losses, in light of disappointing economic data that raises fears of a potential global slowdown. The Chinese market closed in positive territory as China's factory and service sectors expanded for the first time in four months. Authorities lifted the strict COVID lockdown in Shanghai, jumpstarting production and consumer spending. The Hang Seng index ended lower on fears of rising U.S. interest rates and rising inflation. The South Korean market fell this session due to concerns about high inflation and impending recession. The main fear stems from the wait for US PCE inflation data. The Japanese market closed in negative territory as a monthly drop in industrial production stoked fears of an economic slowdown. Industrial production fell 7.2% in May, the second consecutive monthly decline and the largest monthly drop in two years. The Australian market ended lower as central bankers reiterated their commitment to control inflation, no matter the cost, to prevent rising inflation from taking hold. Thus, NIKKEI -1.54%; HANG SENG -0.62%; CSI 300 +1.44%; S&P/ASX 200 -1.91%; KOSPI -1.97%; SHANGAI COMPOSITE +1.10% ended with negative returns.

ETFs

	Curr.	Close	1D	5D	30 D	YTD	Exchange
SPDR S&P 500 ETF TRUST	USD	377.25	-0.81%	-0.21%	-8.64%	-20.57%	NYSE Arca
ISHARES MSCI EMERGING MARKET	USD	40.10	-0.47%	0.98%	-5.96%	-17.91%	NYSE Arca
ISHARES IBOXX HIGH YLD CORP	USD	73.61	-0.05%	-1.21%	-7.41%	-15.40%	NYSE Arca
FINANCIAL SELECT SECTOR SPDR	USD	31.45	-0.88%	0.83%	-11.33%	-19.46%	NYSE Arca
VANECK GOLD MINERS ETF	USD	27.38	-3.73%	-5.29%	-13.71%	-14.52%	NYSE Arca
ISHARES RUSSELL 2000 ETF	USD	169.36	-0.78%	-0.28%	-8.61%	-23.87%	NYSE Arca
SPDR GOLD SHARES	USD	168.46	-0.61%	-1.06%	-1.57%	-1.46%	NYSE Arca
ISHARES 20+ YEAR TREASURY BO	USD	114.87	0.88%	0.64%	-1.45%	-22.48%	NASDAQ GM
INVESCO QQQ TRUST SERIES 1	USD	280.28	-1.24%	-1.60%	-9.08%	-29.55%	NASDAQ GM
ISHARES BIOTECHNOLOGY ETF	USD	117.63	-0.31%	-0.32%	0.82%	-22.93%	NASDAQ GM
ENERGY SELECT SECTOR SPDR	USD	71.51	-2.11%	1.20%	-17.99%	28.85%	NYSE Arca
PROSHARES ULTRA VIX ST FUTUR	USD	14.53	1.11%	-1.76%	4.99%	16.89%	Cboe BZX
UNITED STATES OIL FUND LP	USD	80.35	-3.13%	1.73%	-5.99%	47.81%	NYSE Arca
ISHARES MSCI BRAZIL ETF	USD	27.39	-1.40%	0.92%	-22.30%	-2.42%	NYSE Arca
SPDR S&P OIL & GAS EXP & PR	USD	119.48	-3.66%	-0.88%	-22.73%	24.63%	NYSE Arca
UTILITIES SELECT SECTOR SPDR	USD	70.13	1.11%	3.39%	-5.65%	-2.03%	NYSE Arca
ISHARES US REAL ESTATE ETF	USD	91.98	-0.20%	-0.11%	-7.22%	-20.80%	NYSE Arca
SPDR S&P BIOTECH ETF	USD	74.27	-0.71%	-2.57%	7.98%	-33.66%	NYSE Arca
ISHARES IBOXX INVESTMENT GRA	USD	110.03	0.30%	0.06%	-3.85%	-16.97%	NYSE Arca
ISHARES JP MORGAN USD EMERGI	USD	85.32	0.41%	-1.23%	-6.50%	-21.77%	NASDAQ GM
REAL ESTATE SELECT SECT SPDR	USD	40.86	0.07%	-0.15%	-7.60%	-21.13%	NYSE Arca
ISHARES CHINA LARGE-CAP ETF	USD	33.91	-0.09%	2.94%	6.43%	-7.30%	NYSE Arca
CONSUMER STAPLES SPDR	USD	72.18	0.07%	1.02%	-3.08%	-6.39%	NYSE Arca
VANECK JUNIOR GOLD MINERS	USD	32.00	-3.73%	-6.71%	-18.39%	-23.68%	NYSE Arca
SPDR BLOOMBERG HIGH YIELD BO	USD	90.71	-0.12%	-1.43%	-8.02%	-16.45%	NYSE Arca
VANGUARD REAL ESTATE ETF	USD	91.11	-0.19%	-0.08%	-8.03%	-21.46%	NYSE Arca
GRAYSCALE BITCOIN TRUST BTC	USD	12.06	-9.46%	-11.91%	-41.29%	-64.79%	OTC US

USA Treasury Bonds Yield Curve (%)



Source: Bloomberg

LIMA

Stocks

	Ticker	Currency	Price	1D*	5D*	30D*	YTD*	Frequency	Volume (US\$)	Beta	Dividend Yield (%)	Price Earning	Market Cap. (M US\$)	Economic Sector*	Index Weight
▲	ALICORC1 PE**	S/.	5.15	1.41%	-0.50%	-8.48%	-10.84%	94.74%	439,175	0.81	16.21	11.54	1,147.66	Industrial	3.53%
-	ATACOCB1 PE**	S/.	0.09	0.00%	0.00%	-10.00%	-25.00%	21.05%	5	1.00	0.00	-	23.59	Mining	1.02%
▼	BACKUS1 PE**	S/.	20.00	-2.44%	-6.10%	-7.83%	-2.44%	89.47%	33,464	0.79	17.15	6.77	7,226.64	Industrial	0.82%
▼	BAP PE**	US\$	119.68	-3.16%	-3.09%	-15.17%	-3.31%	100.00%	387,767	1.31	3.34	-	9,516.95	Diverse	5.82%
▼	BVN PE**	US\$	6.66	-3.76%	-2.77%	-23.36%	-8.77%	94.74%	359,130	1.39	1.05	-	1,835.73	Mining	5.88%
-	CASAGRC1 PE**	S/.	7.20	0.00%	1.41%	2.86%	-20.88%	84.21%	6,113	1.18	75.02	4.31	158.54	Agricultural	1.31%
▲	BBVAC1 PE**	S/.	1.70	1.19%	6.92%	12.58%	-6.08%	89.47%	16,288	0.81	6.79	6.48	3,003.37	Finance	2.85%
▼	CORARE1 PE**	S/.	1.31	-0.76%	0.77%	-7.75%	-23.84%	78.95%	30,965	0.81	19.58	2.31	563.14	Industrial	1.72%
▼	CPACASC1 PE**	S/.	3.65	-2.67%	0.83%	-5.19%	-26.26%	89.47%	32,185	0.75	21.64	10.14	439.27	Industrial	2.38%
▼	CVERDEC1 PE**	US\$	27.09	-3.94%	-2.90%	-9.09%	-27.24%	89.47%	802,941	0.88	6.85	7.32	9,483.02	Mining	5.25%
-	ENGEPEC1 PE**	S/.	2.08	0.00%	4.00%	7.77%	0.48%	78.95%	2,789	0.79	15.08	7.75	1,302.52	Public Services	1.44%
-	ENDISPC1**	S/.	3.80	0.00%	0.00%	1.33%	-5.00%	21.05%	17	0.85	0.00	6.82	634.31	Public Services	0.98%
-	FERREYC1 PE**	S/.	2.11	0.00%	0.48%	0.00%	2.93%	100.00%	21,842	0.93	11.30	4.04	521.81	Diverse	4.90%
-	AENZAC1 PE**	S/.	0.94	0.00%	4.44%	-7.84%	-31.39%	73.68%	570	0.96	0.00	-	294.12	Diverse	4.05%
▼	IFS PE**	US\$	22.90	-0.43%	-2.55%	-13.13%	-14.71%	89.47%	8,807	0.97	10.48	-	2,643.07	Diverse	7.22%
▲	INRETC1 PE**	US\$	25.75	2.18%	1.18%	-14.39%	-26.32%	94.74%	28,529	0.77	5.32	17.07	2,800.23	Diverse	5.28%
-	LUSURC1 PE**	S/.	15.79	0.00%	-0.06%	8.90%	10.88%	68.42%	16,309	0.00	0.00	13.09	2,009.92	Public Services	1.81%
▼	MINSURI1 PE**	S/.	3.69	-1.07%	-2.89%	-22.32%	-6.58%	94.74%	14,668	1.11	9.58	1.37	2,780.89	Mining	3.09%
-	PML PE**	US\$	0.13	0.00%	0.00%	0.00%	8.33%	10.53%	1,300	1.13	0.00	-	34.37	Mining	2.12%
▼	SCCO PE**	US\$	49.59	-4.17%	0.63%	-19.73%	-19.73%	94.74%	210,782	1.02	8.37	10.63	38,337.54	Industrial	2.12%
-	SIDERC1 PE**	S/.	1.35	0.00%	-2.17%	-6.25%	-15.63%	63.16%	6,366	0.72	0.00	3.17	247.03	Mining	2.14%
-	TV PE**	US\$	0.40	0.00%	0.00%	-28.57%	-69.23%	63.16%	6,066	1.30	0.00	-	39.58	Industrial	1.43%
-	UNACEMC1 PE**	S/.	1.51	0.00%	0.67%	-4.43%	-37.08%	94.74%	5,799	1.05	7.28	-	717.65	Mining	2.93%
▼	VOLCABC1 PE**	S/.	0.50	-7.41%	-7.41%	-16.67%	-16.67%	100.00%	68,905	1.16	0.00	6.70	532.82	Industrial	3.00%
▼	BROCALC1 PE**	S/.	4.70	-4.28%	-7.84%	-32.76%	-9.62%	26.32%	5,349	0.00	2.40	34.49	199.64	Mining	5.90%
#####	RIMSEGC1 PE**	S/.	#N/A N/A	#¡VALOR!	#¡VALOR!	0.00%	#¡VALOR!	0.00%	433	0.00	0.00	-	#¡VALOR!	Finance	3.09%
▼	CORAREC1 PE**	US\$	2.15	-1.38%	-1.38%	1.42%	13.16%	78.95%	89,840	0.00	11.93	3.78	2,154.30	Mining	2.12%
-	ENGIEC1 PE**	S/.	5.35	0.00%	-4.46%	-5.81%	-8.70%	31.58%	42	0.53	0.00	14.43	841.02	Diversas	2.12%
-	GBVLAC1 PE**	S/.	2.50	0.00%	4.17%	3.31%	-8.09%	36.84%	16,650	0.00	8.26	25.98	119.00	Diversas	2.14%

Quantity of shares: 28
Source: Bloomberg, Economática
* Bloomberg Industry Classification System
** PER is used in the stock market and original currency of the instrument

Up 3
Down 12
Hold 13

*Legend: Variation 1D: 1 Day; 5D: 5 Days, 1M: 1 Month; YTD: Var.% 12/31/21 to date

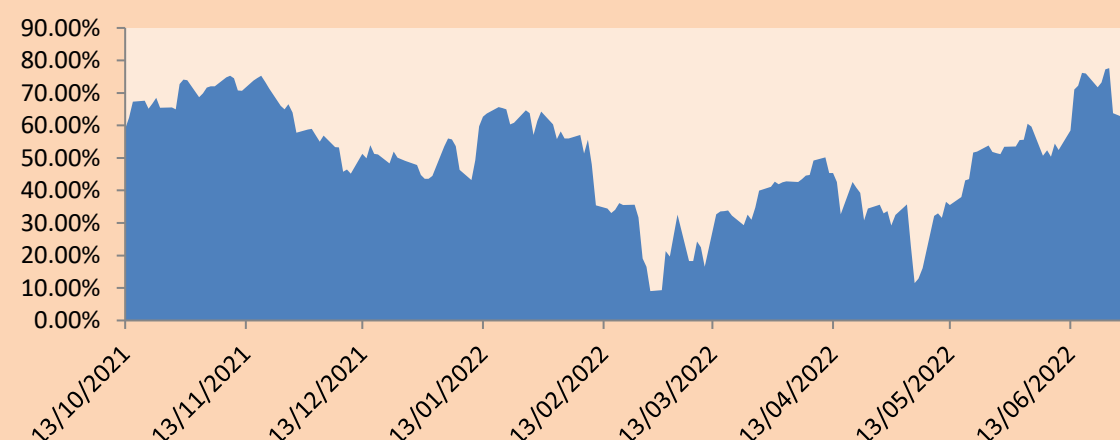
Sectorial Indices

		Close	1D*	5D*	30D*	YTD*	Beta
▼	S&P/BVLMining	330.00	-3.15%	0.40%	-17.64%	-19.83%	1.07
▲	S&P/BVLConsumer	969.63	0.48%	0.01%	-5.98%	-15.54%	0.53
▲	S&P/BVLIndustrials	220.45	-0.62%	0.57%	-2.72%	-14.58%	0.73
▼	S&P/BVLFinancials	859.49	-1.82%	-1.08%	-11.60%	-5.14%	1.32
▼	S&P/BVLConstruction	218.84	-0.91%	0.60%	-3.98%	-22.78%	0.67
-	S&P/BVLPublicSvcs	536.09	0.00%	-1.08%	-0.51%	-2.26%	0.10
-	S&P/BVLElectricUtil	523.35	0.00%	-1.08%	-0.51%	-2.26%	0.10

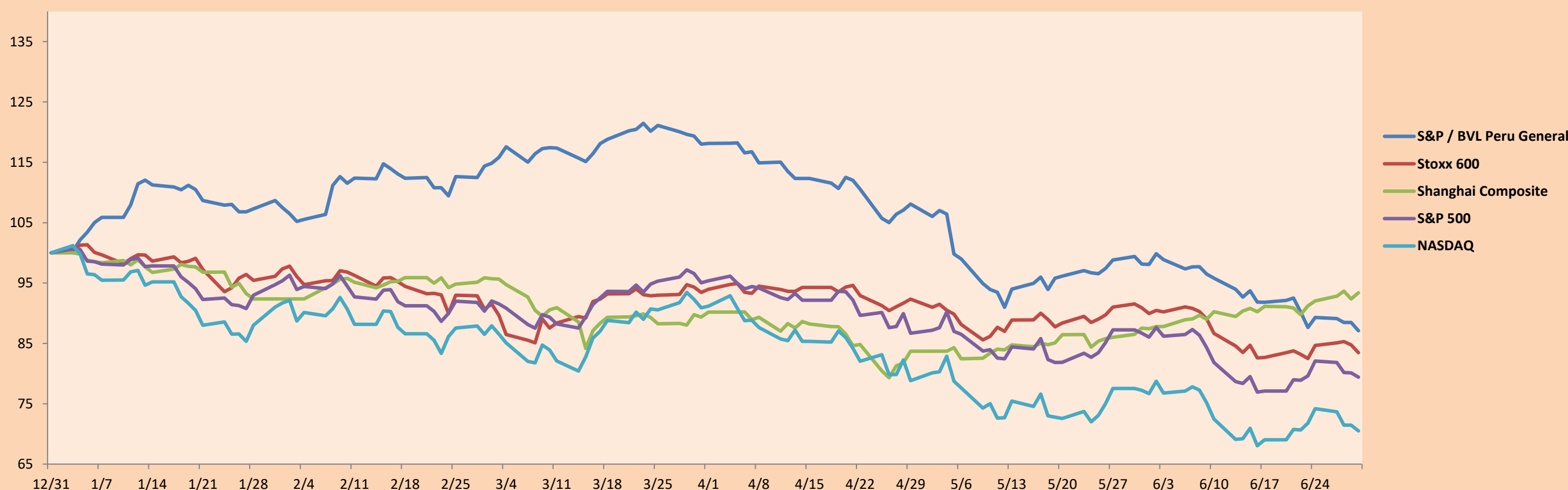
S&P/BVLConstructionTRPEN

*Legend: Variation 1D: 1 Day; 5D: 5 Days, 1M: 1 Month; YTD: Var.% 12/31/21 to date

Correlation Graph of Returns of Mining Index against Metallic Index of London (3 months)



Indices (6 months)



Base: 31/12/21=100
Source: Bloomberg

Capital Market Laboratory Coordinator: MS Javier Penny Pestana
Collaboration: Sebastian Ore, Fabrizio Lavalle, Miguel Solimano y Jhonatan Cueva
email: pulsobursatil@ulima.edu.pe
facebook: www.facebook.com/pulsobursatil.ul

SOVEREIGN RATING

RISK RATINGS

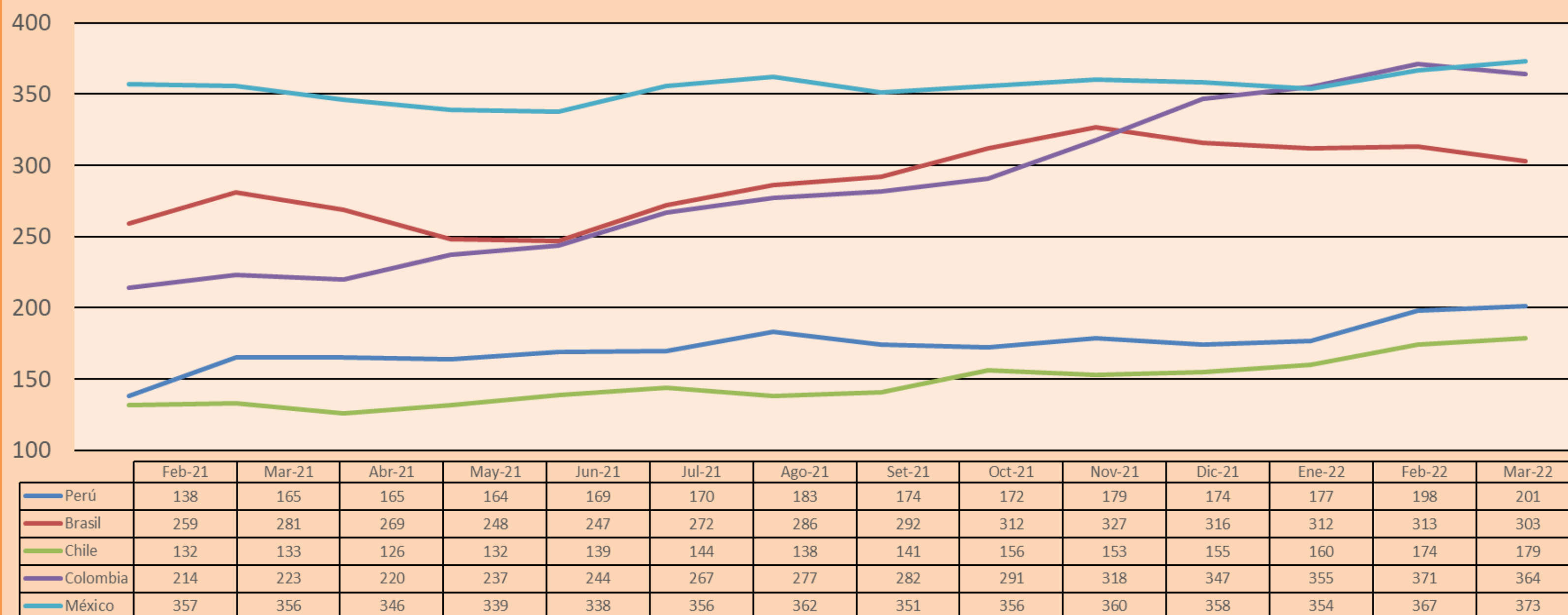
Moody's	S&P	Fitch	
Aaa	AAA	AAA	Prime
Aa1	AA+	AA+	High credit quality
Aa2	AA	AA	
Aa3	AA-	AA-	
A1	A+	A+	Medium-high grade, with low credit risk
A2	A	A	
A3	A-	A-	
Baa1	BBB+	BBB+	Moderate Credit Risk
Baa2	BBB	BBB	
Baa3	BBB-	BBB-	
Ba1	BB+	BB+	It has speculative elements and it is subject to substantial credit risk
Ba2	BB	BB	
Ba3	BB-	BB-	
B1	B+	B+	It is considered speculative and it has high credit risk
B2	B	B	
B3	B-	B-	
Caa1	CCC+	CCC	
Caa2	CCC	CCC	
Caa3	CCC-	CCC	
Ca	CC	CC	Very close to default or in default
	C	C	
C	D	DDD DD D	

Source: Bloomberg

Latin America Credit Rating			
Clasificadora de riesgo			
Country	Moody's	Fitch	S&P
Peru	Baa1	BBB	BBB
México	Ba2	BB-	BB-
Venezuela	C	WD	NR
Brazil	Ba2	BB-	BB-
Colombia	Baa2	BB+	BB+
Chile	A1	A-	A
Argentine	Ca	WD	CCC+
Panama	Baa2	BBB-	BBB

Source: Bloomberg

LATAM Country Risk(bps)



Source: BCRP

Capital Market Laboratory Coordinator: MS Javier Penny Pestana
Collaboration: Sebastian Ore, Fabrizio Lavalle, Miguel Solimano y Jhonatan Cueva
email: pulsobursatil@ulima.edu.pe
facebook: www.facebook.com/pulsobursatil.ul