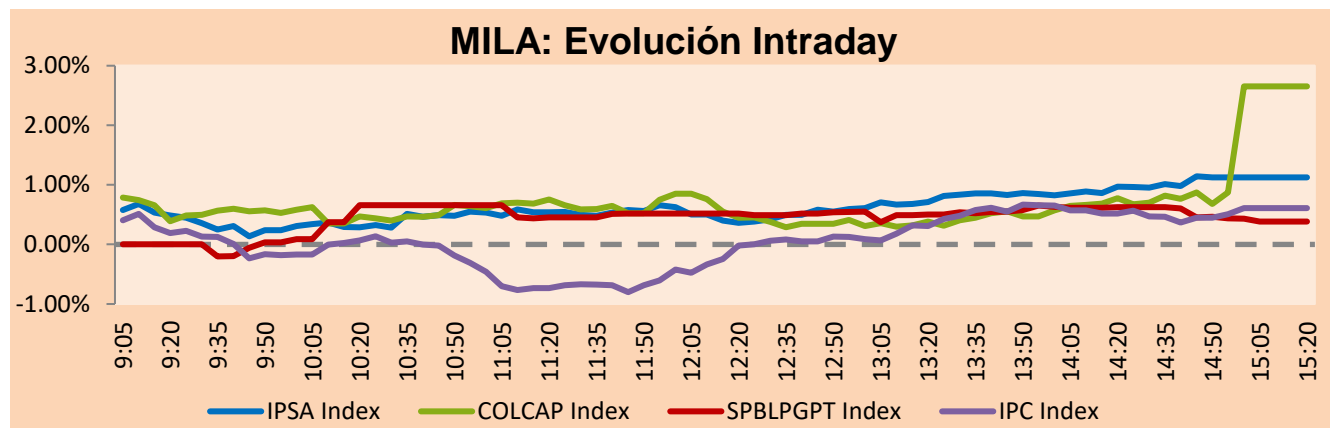


MILA

Lima, July 1, 2022

Main Indexes	Close	1 D	5 D	1 M	YTD	Cap. Burs. (US\$ bill)
▲ IPSA (Chile)	4,993.37	0.87%	1.19%	-5.77%	15.90%	92.27
▲ IGPA (Chile)	26,290.66	1.12%	0.95%	-5.37%	21.90%	106.68
▲ COLSC (Colombia)	871.49	0.45%	1.13%	-7.55%	-10.44%	5.37
▲ COLCAP (Colombia)	1,357.98	2.65%	1.43%	-15.37%	-3.76%	65.38
▲ S&P/BVL (Perú)*	18,458.98	0.38%	-0.22%	-10.84%	-12.57%	80.01
▲ S&P/BVL SEL (Perú)	487.04	0.79%	1.13%	-10.13%	-13.58%	71.64
▼ S&P/BVL LIMA 25	26,124.28	-0.03%	-0.45%	-8.52%	-13.71%	79.20
▲ IPC (México)	47,743.15	0.46%	0.00%	-7.31%	-10.38%	299.19
▲ S&P MILA 40	439.10	0.49%	-1.56%	-18.69%	-1.29%	6,062.40

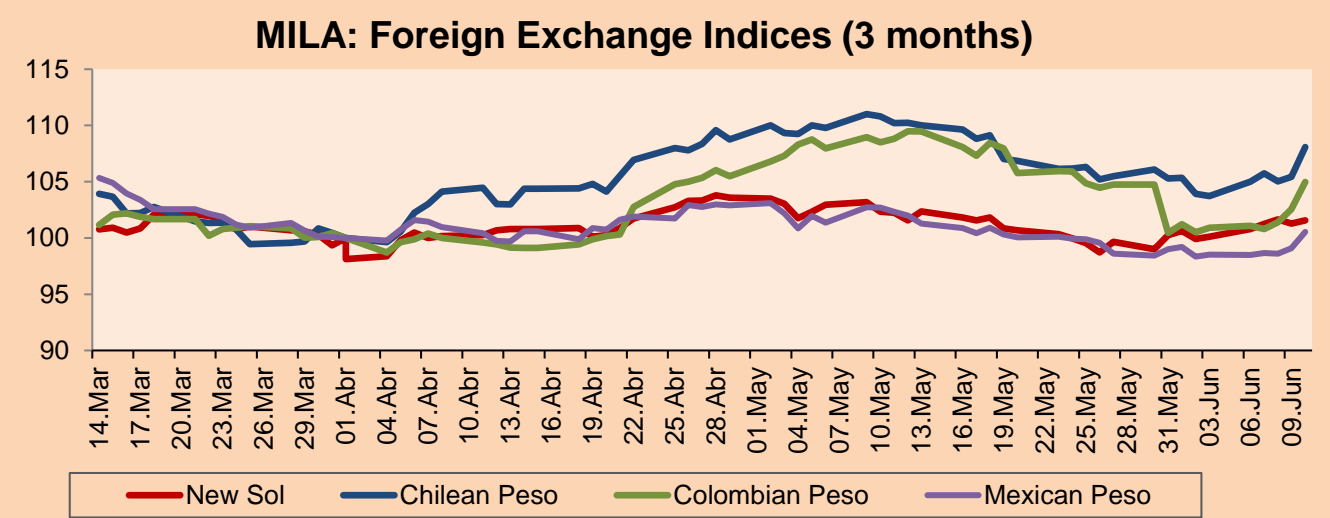
*Legend: Variation 1D: 1 day; 5D: 5 days; 1M: 1 Month; YTD: Var% 12/31/21 to date



Source: Bloomberg

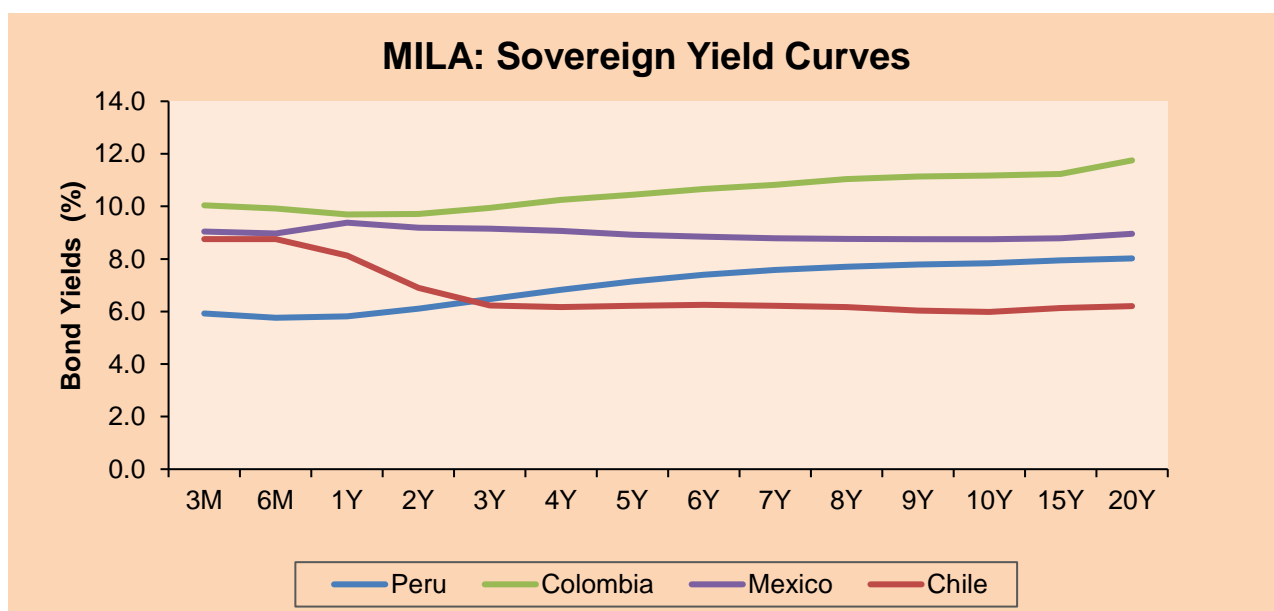
Currency	Price	1D*	5D*	30 D*	YTD*
▲ Sol (PEN)	3,842.3	0.44%	1.42%	3.08%	-3.92%
▲ Chilean Peso (CLP)	931.13	1.42%	1.38%	12.97%	9.29%
▲ Colombian Peso (COP)	4,198.39	1.04%	1.45%	10.49%	2.89%
▲ Mexican Peso (MXN)	20.26	0.72%	1.99%	2.87%	-1.30%

*Legend: Variation 1D: 1 day; 5D: 5 days; 1M: 1 Month; YTD: Var% 12/31/21 to date



Base: 01/04/22=100
Source: Bloomberg

Fixed Income	Currency	Price	Bid Yield (%)	Ask Yield (%)	Duration
PERU 7.35 07/21/25	USD	108.355	4.46	4.31	2.66
PERU 4.125 08/25/27	USD	98.645	4.45	4.39	4.51
PERU 8.75 11/21/33	USD	128.054	5.46	5.37	7.64
PERU 6.55 03/14/37	USD	110.581	5.53	5.45	9.07
PERU 5.625 11/18/2050	USD	105.225	5.29	5.25	14.21
CHILE 2.25 10/30/22	USD	99.98	2.93	1.68	0.31
CHILE 3.125 01/21/26	USD	97.279	4.00	3.92	3.27
CHILE 3.625 10/30/42	USD	81.619	5.12	5.06	13.56
COLOM 11.85 03/09/28	USD	140.349	3.94	3.78	4.32
COLOM 10.375 01/28/33	USD	120.972	7.60	7.34	6.49
COLOM 7.375 09/18/37	USD	93.954	8.11	8.03	8.62
COLOM 6.125 01/18/41	USD	79.945	8.28	8.23	9.66
MEX 4 10/02/23	USD	79.945	8.28	8.232	9.66
MEX5.55 01/45	USD	92.991	6.16	6.10	12.06



Source: Bloomberg

Equity

Largest gains	Exchange	Currency	Price	▲%	Largest losses	Exchange	Currency	Price	▼%
BUENAVENTURA-ADR	Peru	USD	8.25	4.43	FIBRA TERRA	Mexico	MXN	26.9	-5.94
CMPC	Chile	CLP	1459.50	4.39	GRUPO BIMBO-A	Mexico	MXN	61.4	-4.84
SURAMERICANA	Colombia	COP	37300.00	3.61	CREDICORP LTD	Peru	USD	126	-4.83
SMU SA	Chile	CLP	92.00	3.37	CEMEX SAB-CPO	Mexico	MXN	7.83	-4.04
VOLCAN CIA MIN-B	Peru	PEN	0.62	3.33	ORBIA ADVANCE CO	Mexico	MXN	50.39	-3.47

Per Turnover	Exchange	Amount (US\$)	Per Volume	Exchange	Volume
AMERICA MOVIL-L	Mexico	40,683,914	ITAU CORPBANCA	Chile	530,558,119
WALMART DE MEXIC	Mexico	40,485,021	BANCO SANTANDER	Chile	90,262,717
GRUPO F BANORT-O	Mexico	29,518,716	ENEL CHILE SA	Chile	76,723,804
SOQUIMICH-B	Chile	24,079,551	BANCO DE CHILE	Chile	53,897,055
GRUPO MEXICO-B	Mexico	15,828,721	AMERICA MOVIL-L	Mexico	41,819,859

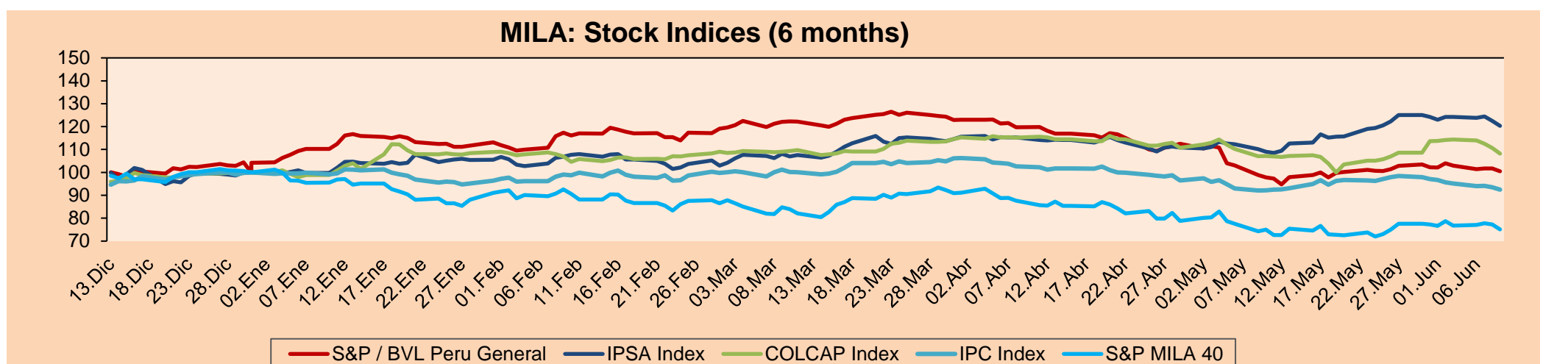
MILA

Peru: The BVL General index ended today's session with a positive result of +0.38%. The index maintains a negative annual cumulative trend of -12.57% in local currency, while the adjusted performance in USD amounts to -9.00%. Then, the S&P/BVL Peru SEL varied by +0.79% while the S&P/BVL LIMA 25 by -0.03%. The spot PEN reached S/.3.8419. Headline: Lima's annual inflation reached its highest level in 25 years during June.

Chile: The IPSA index ended the day with a positive return of +0.87%. The most impacted sectors of the day were energy (+6.58%) and financials (+1.43%). The best performing stocks were Sociedad Química y Minera (+3.27%) and Banco Santander Chile (+3.16%). Headline: IPSA approaches 5 thousand points.

Colombia: The COLCAP index ended the session with a positive return of +2.65%. The most impacted sectors of the day were energy (+3.89%) and utilities (+3.52%). The best performing stocks were Empresa de Energía de Bogotá (+7.46%) and Grupo Aval Acciones y Valores (+5.33%). Headline: Ecuador strike ends after agreement between government and indigenous people.

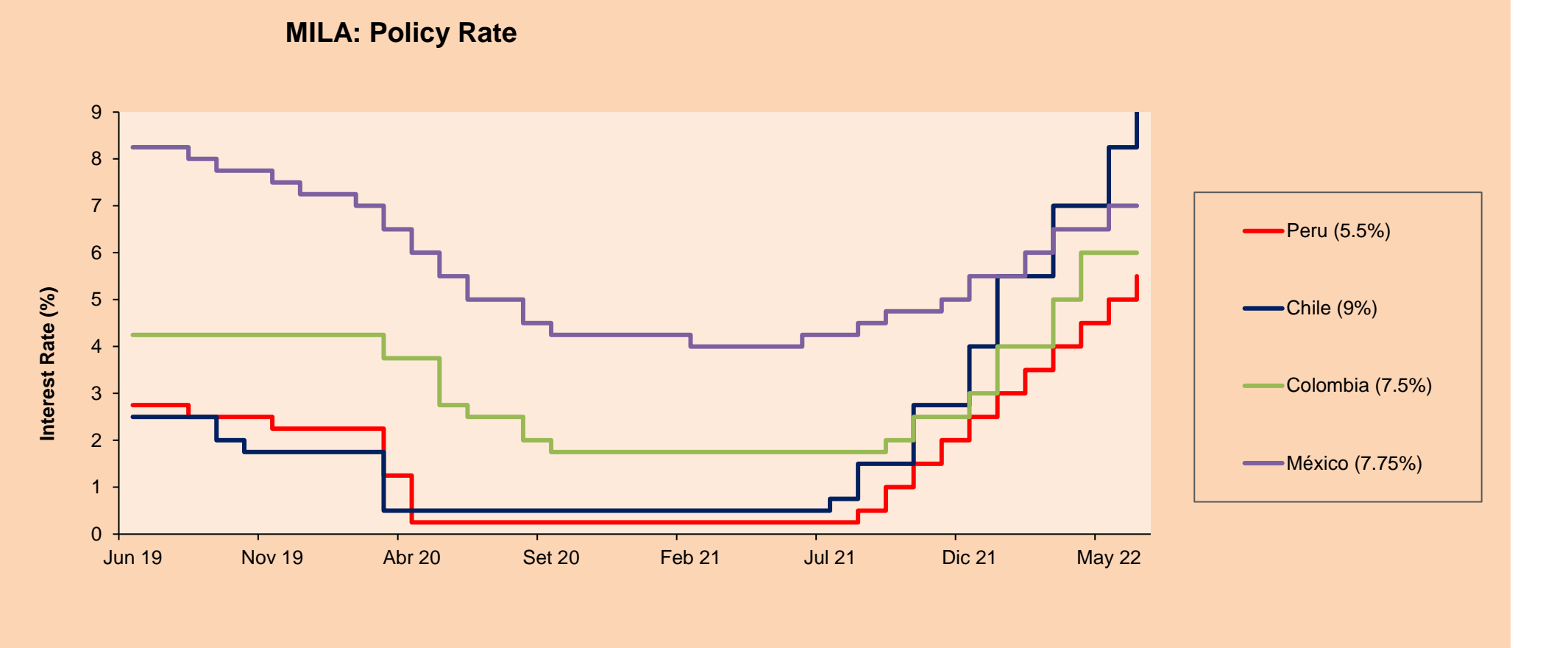
Mexico: The IPC index closed the day in positive territory, +0.46%. The best performing sectors of the day were consumer staples (+1.42%) and communication services (+1.10%). The best performing stocks were Coca-Cola Femsa SAB (+2.68%) and Fomento Económico Mexicano SAB (+2.26%). Headline: Remittances reach historic high in May 2022.



Base: 13/12/21=100
Source: Bloomberg

ETFs

ETFs	Curr.	Close	1D	5D	30 D	YTD	Exchange
▲ iShares MSCI All Peru Caped Index Fund	USD	25.93	1.61%	-1.63%	-15.78%	-12.46%	NYSE Arca
▼ iShares MSCI All Chile Caped Index Fund	USD	24	-0.29%	-2.20%	-19.52%	3.94%	Cboe BZX
▲ Global X MSCI Colombia	USD	9.14	1.41%	0.44%	-24.34%	-8.54%	NYSE Arca
▼ iShares MSCI Mexico Capped	USD	46.46	-0.28%	-1.84%	-10.05%	-8.18%	NYSE Arca
▼ iShares MSCI Emerging Markets	USD	39.85	-0.62%	-1.97%	-5.88%	-18.42%	NYSE Arca
▼ Vanguard FTSE Emerging Markets	USD	41.4	-0.60%	-1.87%	-4.50%	-16.30%	NYSE Arca
▼ iShares Core MSCI Emerging Markets	USD	48.7	-0.73%	-2.17%	-6.72%	-18.64%	NYSE Arca
▼ iShares JP Morgan Emerging Markets Bonds	USD	55.38	-0.09%	-0.31%	-4.10%	-11.84%	Cboe BZX
▼ Morgan Stanley Emerging Markets Domestic	USD	4.47	-0.45%	-2.19%	-3.46%	-18.43%	New York



Source: Bloomberg

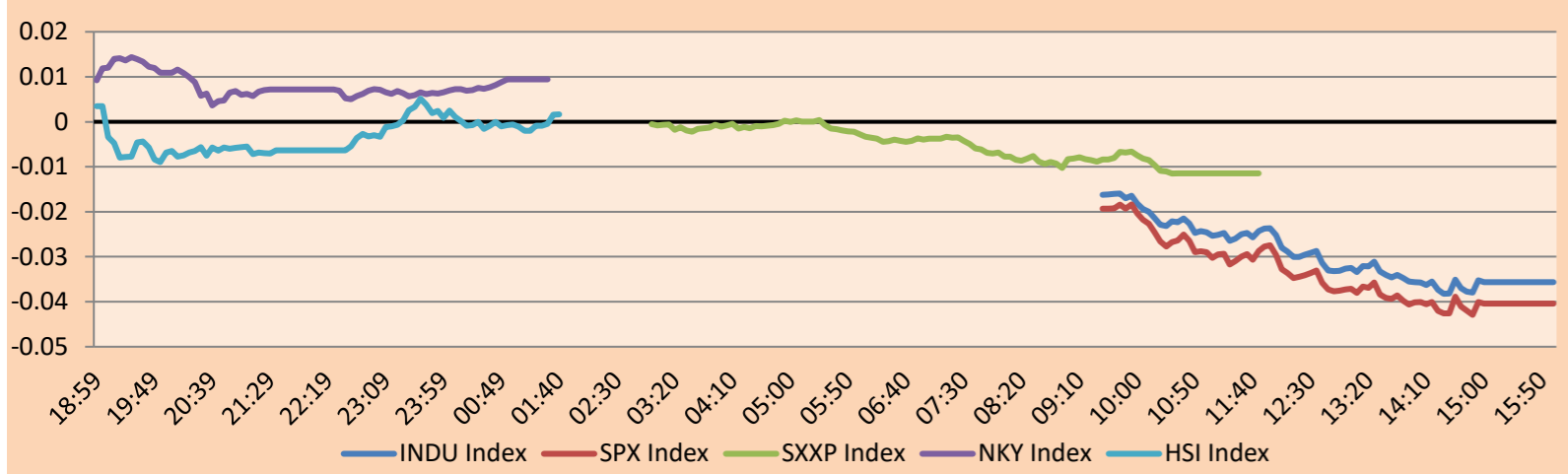
Capital Market Laboratory Coordinator: MS Javier Penny Pestana
Collaboration: Sebastian Ore, Fabrizio Lavalle, Miguel Solimano y Jhonatan Cueva
email: pulsobursatil@ulima.edu.pe
facebook: www.facebook.com/pulsobursatil.ul

WORLD

Main Indices	Close	1 D*	5 D*	1 M*	YTD*	Market Cap. (US\$ Mill.)
▲ Dow Jones (USA)	31,097.26	1.05%	-1.28%	-5.23%	-14.42%	9,618,853
▲ Standard & Poor's 500 (EEUU)	3,825.33	1.06%	-2.21%	-6.73%	-19.74%	33,260,570
▲ NASDAQ Composite (USA)	11,127.84	0.90%	-4.13%	-7.23%	-28.87%	18,866,024
▼ Stoxx EUROPE 600 (Europe)	407.13	-0.02%	-1.40%	-7.49%	-16.54%	10,818,605
▲ DAX (Germany)	12,813.03	0.23%	-2.33%	-11.39%	-19.34%	1,289,549
▼ FTSE 100 (United Kingdom)	7,168.65	-0.01%	-0.56%	-4.84%	-2.92%	1,630,533
▲ CAC 40 (France)	5,931.06	0.14%	-2.34%	-8.55%	-17.08%	1,838,691
▲ IBEX 35 (Spain)	8,176.10	0.96%	-0.82%	-6.29%	-6.17%	523,367
▼ MSCI AC Asia Pacific Index	156.53	-0.94%	-1.68%	-7.43%	-18.95%	21,987,463
▼ HANG SENG (Hong kong)	21,859.79	-0.62%	2.75%	2.65%	-6.57%	3,496,801
▼ SHANGHAI SE Comp. (China)	3,387.64	-0.32%	1.13%	6.01%	-6.93%	6,905,450
▼ NIKKEI 225 (Japan)	25,935.62	-1.73%	-2.10%	-6.58%	-9.92%	3,308,663
▼ S&P / ASX 200 (Australia)	6,539.91	-0.43%	-0.59%	-9.65%	-12.15%	1,478,235
▼ KOSPI (South Korea)	2,305.42	-1.17%	-2.59%	-13.68%	-22.58%	1,351,192

*Legend: Variation 1D: 1 Day; 5D: 5 Days; 1M: 1 Month; YTD: Var.% 12/31/21 to date

Mercado Evolución Intraday (var %)

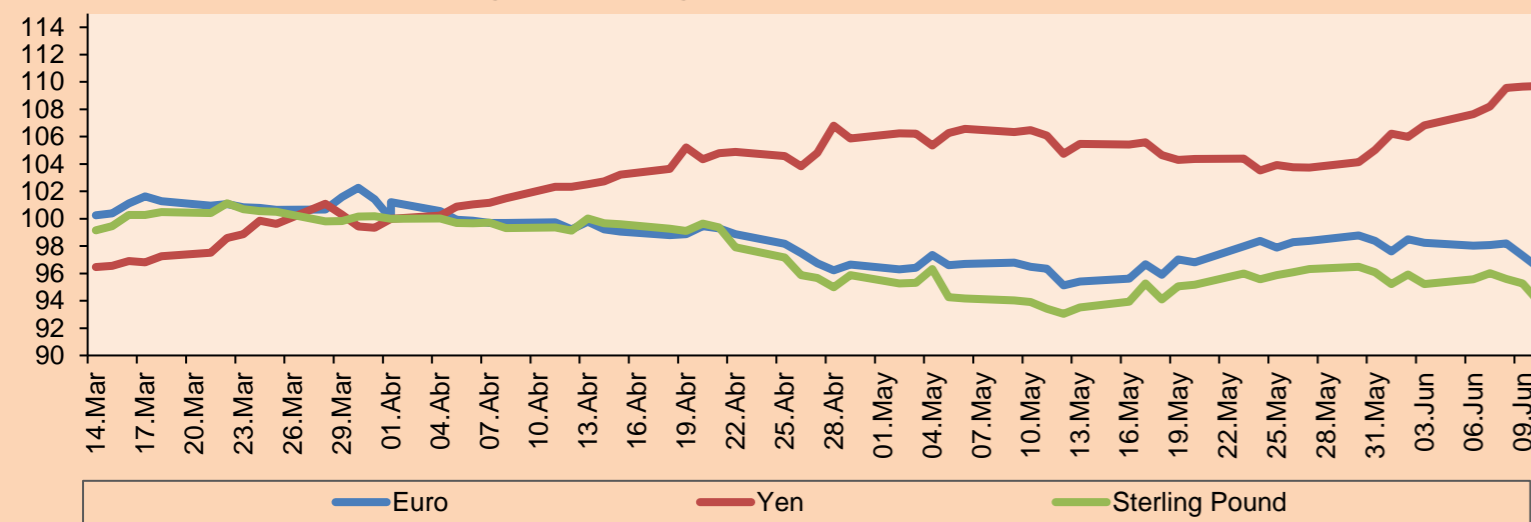


Source: Bloomberg

Currency	Price	1 D*	5 D*	1 M*	YTD*
▼ Euro	1,0414	-0.67%	-1.32%	-2.22%	-8.41%
▼ Yen	135.2100	-0.38%	-0.01%	3.90%	17.49%
▼ Sterling Pound	1.2095	-0.68%	-1.41%	-3.14%	-10.62%
▲ Yuan	6.7015	0.03%	0.17%	0.23%	5.43%
▲ Hong Kong Dollar	7.8468	0.01%	-0.03%	-0.01%	0.64%
▲ Brazilian Real	5.3319	1.43%	1.70%	10.71%	-4.37%
▲ Argentine Peso	125.4571	0.19%	0.97%	4.27%	22.12%

*Legend: Variation 1D: 1 Day; 5D: 5 Days; 1M: 1 Month; YTD: Var.% 12/31/21 to date

Foreign Exchange Indices (3 months)

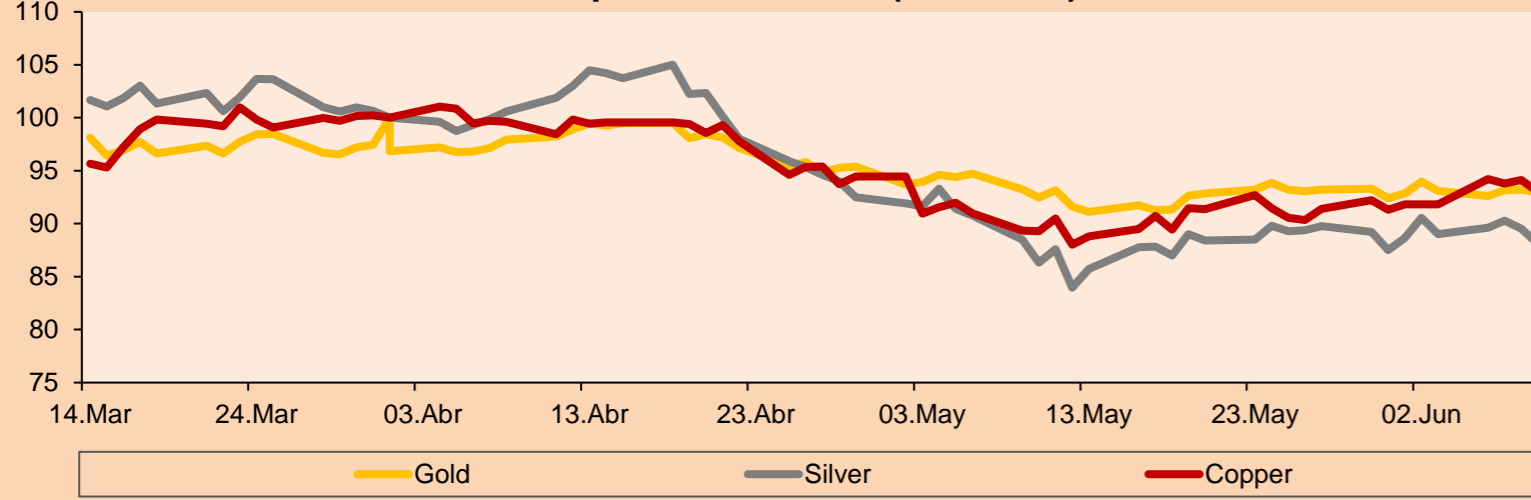


Base: 01/04/22=100
Source: Bloomberg

Commodities	Close	1 D*	5 D*	1 M*	YTD*
▲ Oro (US\$ Oz. T) (LME)	1,811.43	0.23%	-0.85%	-1.90%	-0.97%
▼ Plata (US\$ Oz. T) (LME)	19.88	-1.98%	-6.09%	-8.96%	-14.72%
- Cobre (US\$ TM) (LME)	8,254.25	0.00%	-1.51%	-13.10%	-15.26%
- Zinc (US\$ TM) (LME)	3,182.75	0.00%	-8.67%	-18.07%	-11.34%
▲ Petróleo WTI (US\$ Barril) (NYM)	108.43	2.52%	0.75%	-3.81%	50.24%
- Estaño (US\$ TM) (LME)	26,689.00	0.00%	6.52%	-24.18%	-32.21%
- Plomo (US\$ TM) (LME)	1,903.50	0.00%	-0.51%	-12.00%	-18.58%
▼ Azúcar #11 (US\$ Libra) (NYB-ICE)	18.07	-2.32%	-1.31%	-7.85%	-1.58%
▼ Cacao (US\$ TM) (NYB-ICE)	2,314.00	-1.11%	-4.85%	-8.93%	-9.93%
▼ Café Arábica (US\$ TM) (NYB-ICE)	224.65	-2.37%	0.63%	-6.16%	0.07%

*Leyenda: Variación 1D: 1 Día; 5D: 5 Días; 1M: 1 Mes; YTD: Var.% 31/12/21 a la fecha

Principal Metals Index (3 months)



Base: 01/04/22=100
Source: Bloomberg

Equity

Germany (Stocks from DAX Index)

Largest gains	Curr.	Price	▲%	Exchange	Largest losses	Curr.	Price	▼%	Exchange
FME GY	EUR	47.58	-0.11	Xetra	HEI GY	EUR	45.88	0.09	Xetra
EOAN GY	EUR	8.202	2.42	Xetra	BAS GY	EUR	41.27	-0.61	Xetra
FRE GY	EUR	29.14	0.83	Xetra	1COV GY	EUR	32.53	-1.36	Xetra
HFG GY	EUR	31.55	2.27	Xetra	HNR1 GY	EUR	140.15	1.19	Xetra

Europe (Stocks from STOXX EUROPE 600)

Largest gains	Curr.	Price	▲%	Exchange	Largest losses	Curr.	Price	▼%	Exchange
SOBI SS	SEK	222	0.36	Stockholm	OMV AV	EUR	42.23	-5.65	Vienna
HUH1V FH	EUR	37.45	-0.93	Helsinki	FBK IM	EUR	11.46	0.35	Borsa Italiana
AVV LN	GBp	2260	0.40	Londres	BBVA SQ	EUR	4.3135	-0.39	Soc.Bol SIBE
IGG LN	GBp	684	-0.94	Londres	UCG IM	EUR	9.08	0.17	Borsa Italiana

Global Overview:

United States:

The U.S. market closed with positive returns on the back of data releases and the recovery of previous losses amid low trading volumes. The DOW JONES index closed in positive territory despite the ISM manufacturing PMI falling to 53 in June, signaling slower growth in factory activity and below market expectations in a sign that rising interest rates are affecting demand. In addition, employment declined further to 47.3 from 49.6, although companies improved their process of addressing labor shortages. The S&P500 index also ended with a slightly positive performance where 45 companies out of 130 that made announcements ahead of second quarter reporting have been positive while 77 have been negative. Finally, the NASDAQ index finished like its peers, however, chipmakers sank to the bottom after Micron released a gloomier outlook and retailer Kohls(-19.7%) after releasing disappointing forecasts. Thus, DOW JONES +1.05%; S&P 500 +1.06%; NASDAQ +0.90% ended the day with positive results.

Europe:

Major European indices ended the session with mixed performances as Eurozone year-on-year inflation came in at 8.6% in June, another record high. This reinforces the need for an ECB rate hike as peak inflation could still be months away. The pan-European STOXX 600 index ended with losses as concerns, from persistent inflation to China's slowing economy and Russia's invasion of Ukraine, dampened risk appetite. The U.K. market, reflected in the FTSE 100, fell this session as the U.K. manufacturing sector lost more momentum in June than expected, as new orders contracted at the fastest pace in two years. Meanwhile, the DAX index closed in positive territory, in a context where, according to Deutsche Bank, Germany is not only threatened by a recession due to the decrease in Russian gas supplies, but also by an inflationary shock. The French market rose this session after Eurozone manufacturing PMI data fell less than expected in June. The drop in new orders hit the French manufacturing sector in June, but the PMI came in slightly above the preliminary estimate. Thus, FTSE 100 -0.01%; CAC 40 +0.14%; DAX +0.23%; STOXX 600 -0.02% ended at mixed levels.

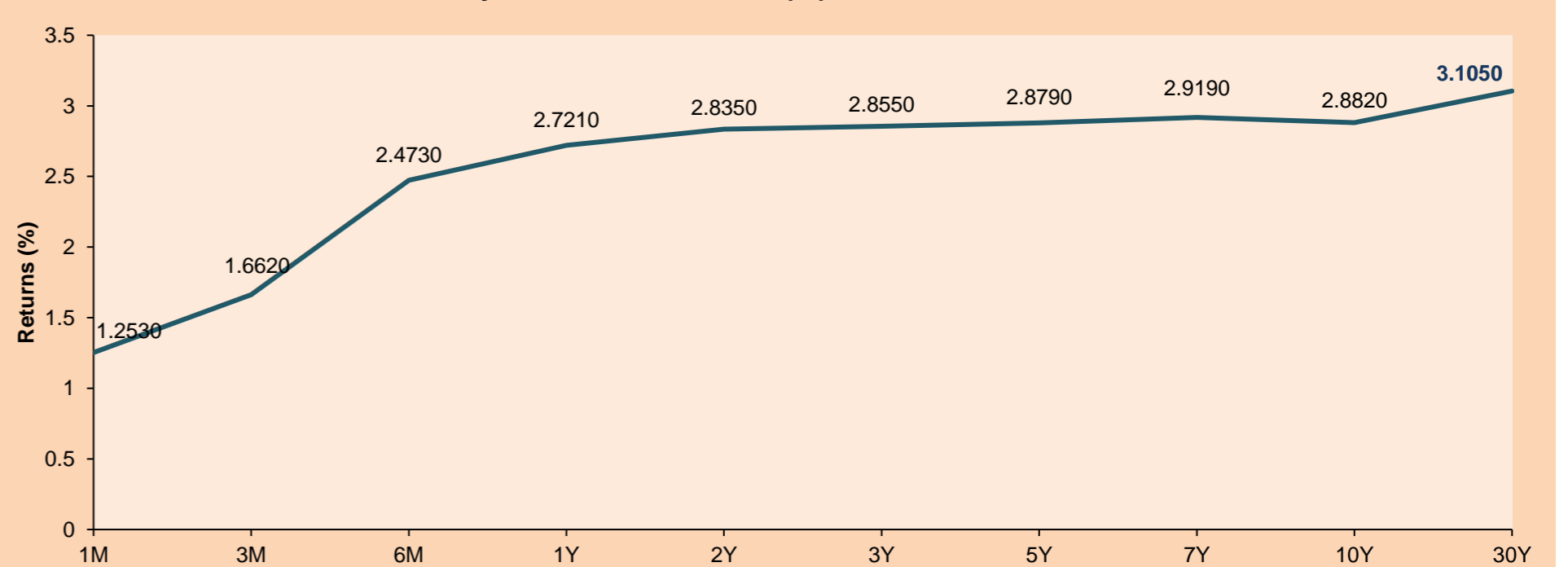
Asia:

Major Asian indices closed with mostly negative returns. The Chinese market closed in negative territory, this even though a private sector survey showed that Beijing's manufacturing activity expanded the fastest in 13 months in June. The Hang Seng index did not trade today because of the Hong Kong Special Administrative Region's Establishment Day holiday. The South Korean market fell this session pressured by a drop in battery and chipmaker stocks amid lingering recession concerns, despite stronger-than-expected export data. The Japanese market closed in negative territory, in a scenario where the Bank of Japan's decision would miss the opportunity to increase its policy defenses, which points to fears of triggering a further weakening of the beleaguered yen. The Australian market ended lower, amid a backdrop where economists agree that Australian house prices are about to fall. However, analysts are less in agreement on the extent to which a fall in the country's A\$10 trillion housing market will drag down the economy. Thus, NIKKEI -1.73%; HANG SENG -0.62%; CSI 300 -0.41%; S&P/ASX 200 -0.43%; KOSPI -1.17%; SHANGAI COMPOSITE -0.32% ended with negative returns.

ETFs

	Curr.	Close	1D	5D	30 D	YTD	Exchange
SPDR S&P 500 ETF TRUST	USD	381.24	1.06%	-2.27%	-6.92%	-19.73%	NYSE Arca
ISHARES MSCI EMERGING MARKET	USD	39.85	-0.62%	-1.97%	-5.88%	-18.42%	NYSE Arca
ISHARES IBOXX HIGH YLD CORP	USD	73.98	0.50%	-1.41%	-6.24%	-14.98%	NYSE Arca
FINANCIAL SELECT SECTOR SPDR	USD	31.88	1.37%	-1.42%	-8.65%	-18.36%	NYSE Arca
VANECK GOLD MINERS ETF	USD	28.16	2.85%	-5.06%	-11.94%	-12.08%	NYSE Arca
ISHARES RUSSELL 2000 ETF	USD	171.41	1.21%	-2.10%	-6.97%	-22.94%	NYSE Arca
SPDR GOLD SHARES	USD	168.32	-0.08%	-1.04%	-2.27%	-1.54%	NYSE Arca
ISHARES 20+ YEAR TREASURY BO	USD	115.82	0.83%	2.90%	-0.34%	-21.84%	NASDAQ GM
INVESTCO QQQ TRUST SERIES 1	USD	282.13	0.66%	-4.24%	-7.80%	-29.09%	NASDAQ GM
ISHARES BIOTECHNOLOGY ETF	USD	120.17	2.16%	0.11%	4.10%	-21.26%	NASDAQ GM
ENERGY SELECT SECTOR SPDR	USD	72.58	1.50%	1.38%	-18.10%	30.77%	NYSE Arca
PROSHARES ULTRA VIX ST FUTUR	USD	13.99	-3.72%	-2.78%	2.19%	12.55%	Cboe BZX
UNITED STATES OIL FUND LP	USD	81.67	1.64%	0.49%	-4.52%	50.24%	NYSE Arca
ISHARES MSCI BRAZIL ETF	USD	27.07	-1.17%	-0.48%	-22.88%	-3.56%	NYSE Arca
SPDR S&P OIL & GAS EXP & PR	USD	120.92	1.21%	-0.88%	-24.27%	26.13%	NYSE Arca
UTILITIES SELECT SECTOR SPDR	USD	71.85	2.45%	4.12%	-3.18%	0.38%	NYSE Arca
ISHARES US REAL ESTATE ETF	USD	93.71	1.88%	-0.35%	-4.63%	-19.31%	NYSE Arca
SPDR S&P BIOTECH ETF	USD	76.54	3.06%	-0.67%	13.34%	-31.64%	NYSE Arca
ISHARES IBOXX INVESTMENT GRA	USD	111.12	0.99%	0.94%	-2.10%	-16.15%	NYSE Arca
ISHARES JP MORGAN USD EMERGI	USD	86.15	0.97%	-0.39%	-5.07%	-21.01%	NASDAQ GM
REAL ESTATE SELECT SECT SPDR	USD	41.59	1.79%	-0.53%	-4.92%	-19.73%	NYSE Arca
ISHARES CHINA LARGE-CAP ETF	USD	33.94	0.09%	0.30%	7.64%	-7.22%	NYSE Arca
CONSUMER STAPLES SPDR	USD	73.22	1.44%	0.51%	-0.38%	-5.04%	NYSE Arca
VANECK JUNIOR GOLD MINERS	USD	33.05	3.28%	-7.11%	-16.52%	-21.18%	NYSE Arca
SPDR BLOOMBERG HIGH YIELD BO	USD	91.04	0.36%	-1.74%	-6.95%	-16.15%	NYSE Arca
VANGUARD REAL ESTATE ETF	USD	92.75	1.80%	-0.40%	-5.60%	-20.05%	NYSE Arca
GRAYSCALE BITCOIN TRUST BTC	USD	12.25	1.58%	-11.55%	-37.08%	-64.23%	OTC US

USA Treasury Bonds Yield Curve (%)



Source: Bloomberg

LIMA

Stocks

	Ticker	Currency	Price	1D*	5D*	30D*	YTD*	Frequency	Volume (US\$)	Beta	Dividend Yield (%)	Price Earning	Market Cap. (M US\$)	Economic Sector*	Index Weight
▲	ALICORC1 PE**	S/.	5.15	0.45%	1.13%	-7.55%	-10.44%	100.00%	173,911	0.81	16.21	11.54	1,142.64	Industrial	3.53%
-	ATACOCB1 PE**	S/.	0.09	0.00%	0.00%	-10.00%	-25.00%	10.00%	5	1.00	0.00	-	23.49	Mining	1.02%
-	BACKUS11 PE**	S/.	20.00	0.00%	-4.76%	-9.09%	-2.44%	100.00%	33,855	0.79	17.15	6.77	7,195.04	Industrial	0.82%
▲	BAP PE**	US\$	120.07	0.33%	-3.94%	-12.87%	-3.00%	100.00%	136,319	1.31	3.33	-	9,547.97	Diverse	5.82%
▲	BVN PE**	US\$	6.77	1.65%	-4.65%	-22.18%	-7.26%	100.00%	145,723	1.40	1.03	-	1,866.05	Mining	5.88%
▼	CASAGRC1 PE**	S/.	7.10	-1.39%	-7.19%	1.43%	-21.98%	90.00%	8,486	1.17	76.08	4.25	155.65	Agricultural	1.31%
-	BBVAC1 PE**	S/.	1.70	0.00%	6.92%	11.84%	-6.08%	100.00%	7,024	0.80	6.79	6.48	2,990.24	Finance	2.85%
▲	CORARE11 PE**	S/.	1.32	0.76%	-0.75%	-7.04%	-23.26%	80.00%	12,331	0.81	19.44	2.32	561.15	Industrial	1.72%
▼	CPACASC1 PE**	S/.	3.63	-0.55%	-3.20%	-6.92%	-26.67%	100.00%	7,024	0.76	21.76	10.08	435.15	Industrial	2.38%
▼	CVERDEC1 PE**	US\$	26.50	-2.18%	-6.03%	-10.02%	-28.82%	100.00%	101,532	0.89	7.01	7.16	9,276.48	Mining	5.25%
▲	ENGEPEC1 PE**	S/.	2.10	0.96%	-0.94%	8.81%	1.45%	100.00%	48,502	0.79	14.94	7.83	1,309.29	Public Services	1.44%
-	ENDISPC1**	S/.	3.80	0.00%	0.00%	1.33%	-5.00%	25.00%	17	0.85	0.00	6.82	631.53	Public Services	0.98%
▼	FERREYC1 PE**	S/.	2.09	-0.95%	-0.48%	-0.48%	1.95%	100.00%	23,897	0.92	11.41	4.00	514.61	Diverse	4.90%
-	AENZAC1 PE**	S/.	0.94	0.00%	0.00%	-6.93%	-31.39%	100.00%	568	0.96	0.00	-	292.84	Diverse	4.05%
-	IFS PE**	US\$	22.90	0.00%	-2.14%	-16.12%	-14.71%	90.00%	8,807	0.97	0.00	-	2,643.07	Diverse	7.22%
-	INRETC1 PE**	US\$	25.75	0.00%	0.59%	-15.57%	-26.32%	95.00%	9,065	0.76	5.32	17.16	2,800.23	Diverse	5.28%
-	LUSURC1 PE**	S/.	15.79	0.00%	-0.06%	8.90%	10.88%	60.00%	16,237	0.00	0.00	13.09	2,001.14	Public Services	1.81%
▼	MINSURI1 PE**	S/.	3.60	-2.44%	-4.76%	-21.57%	-8.86%	100.00%	40,542	1.11	9.82	1.33	2,701.20	Mining	3.09%
-	PML PE**	US\$	0.13	0.00%	0.00%	18.18%	8.33%	25.00%	1,300	1.13	0.00	-	34.37	Mining	2.12%
▼	SCCO PE**	US\$	49.29	-0.60%	-4.05%	-20.51%	-20.22%	100.00%	27,945	1.03	8.42	10.57	38,105.61	Industrial	2.12%
▼	SIDERC1 PE**	S/.	1.34	-0.74%	-1.47%	-7.59%	-16.25%	80.00%	2,276	0.72	46.78	3.15	244.12	Mining	2.14%
-	TV PE**	US\$	0.40	0.00%	0.00%	-24.53%	-69.23%	85.00%	3,798	1.30	0.00	-	39.58	Industrial	1.43%
▲	UNACEMC1 PE**	S/.	1.53	1.32%	1.32%	-4.38%	-36.25%	70.00%	22,210	1.05	7.19	-	723.98	Mining	2.93%
-	VOLCABC1 PE**	S/.	0.50	0.00%	-12.28%	-16.67%	-16.67%	100.00%	103,982	1.18	0.00	6.66	530.49	Industrial	3.00%
-	BROCALC1 PE**	S/.	4.70	0.00%	-7.84%	-32.76%	-9.62%	15.00%	5,326	0.00	0.00	34.33	198.77	Mining	5.90%
#####	RIMSEGC1 PE**	S/.	#N/A N/A	#¡VALOR!	#¡VALOR!	0.00%	#¡VALOR!	0.00%	432	0.00	0.00	-	#¡VALOR!	Finance	3.09%
-	CORAREC1 PE**	US\$	2.15	0.00%	-1.38%	1.42%	13.16%	45.00%	89,840	0.00	0.00	3.78	2,156.12	Mining	2.12%
▲	ENGIEC1 PE**	S/.	5.40	0.93%	-3.57%	-4.93%	-7.85%	25.00%	4,722	0.53	4.65	14.50	845.17	Diversas	2.12%
-	GBVLAC1 PE**	S/.	2.50	0.00%	4.17%	3.31%	-8.09%	25.00%	12,883	0.00	8.26	25.98	118.48	Diversas	2.14%

Quantity of shares: 28
Source: Bloomberg, Economática
* Bloomberg Industry Classification System
** PER is used in the stock market and original currency of the instrument

Up 7
Down 7
Hold 14

*Legend: Variation 1D: 1 Day; 5D: 5 Days; 1M: 1 Month; YTD: Var.% 12/31/21 to date

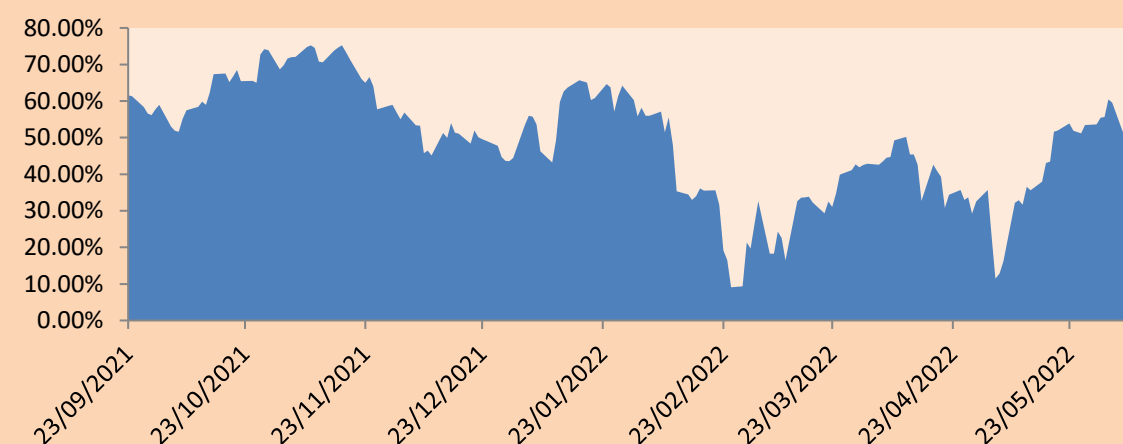
Sectorial Indices

		Close	1D*	5D*	30D*	YTD*	Beta
▲	S&P/BVLMining	330.31	0.09%	-3.39%	-17.78%	-19.75%	1.00
▲	S&P/BVLConsumer	971.06	0.15%	-0.60%	-7.12%	-15.41%	0.51
▼	S&P/BVLIndustrials	220.35	-0.05%	-0.55%	-3.03%	-14.62%	0.74
▲	S&P/BVLFinancials	865.71	0.72%	-1.84%	-9.74%	-4.46%	1.38
▲	S&P/BVLConstruction	219.70	0.39%	-0.58%	-4.20%	-22.47%	0.66
▲	S&P/BVLPublicSvcs	540.29	0.78%	-2.13%	0.27%	-1.50%	0.10
▲	S&P/BVLElectricUtil	527.46	0.79%	-2.13%	0.27%	-1.50%	0.10

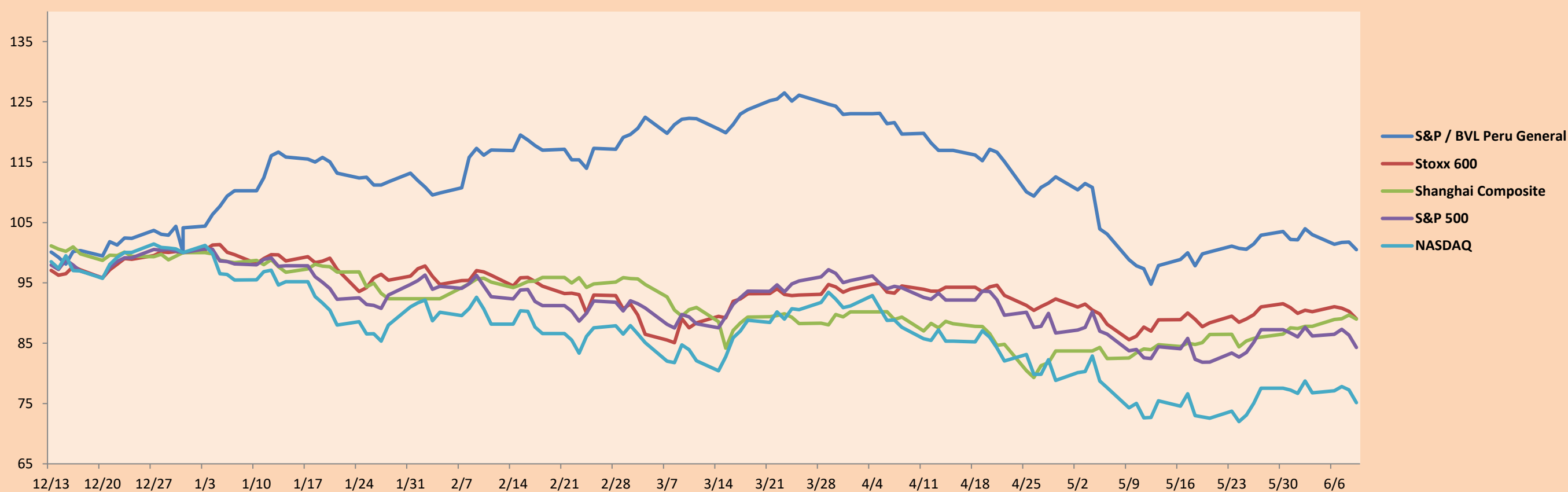
S&P/BVLConstructionTRPEN

*Legend: Variation 1D: 1 Day; 5D: 5 Days; 1M: 1 Month; YTD: Var.% 12/31/21 to date

Correlation Graph of Returns of Mining Index against Metallic Index of London (3 months)



Indices (6 months)



Base: 31/12/21=100
Source: Bloomberg

Capital Market Laboratory Coordinator: MS Javier Penny Pestana
Collaboration: Sebastian Ore, Fabrizio Lavalle, Miguel Solimano y Jhonatan Cueva
email: pulsobursatil@ulima.edu.pe
facebook: www.facebook.com/pulsobursatil.ul

SOVEREIGN RATING

RISK RATINGS

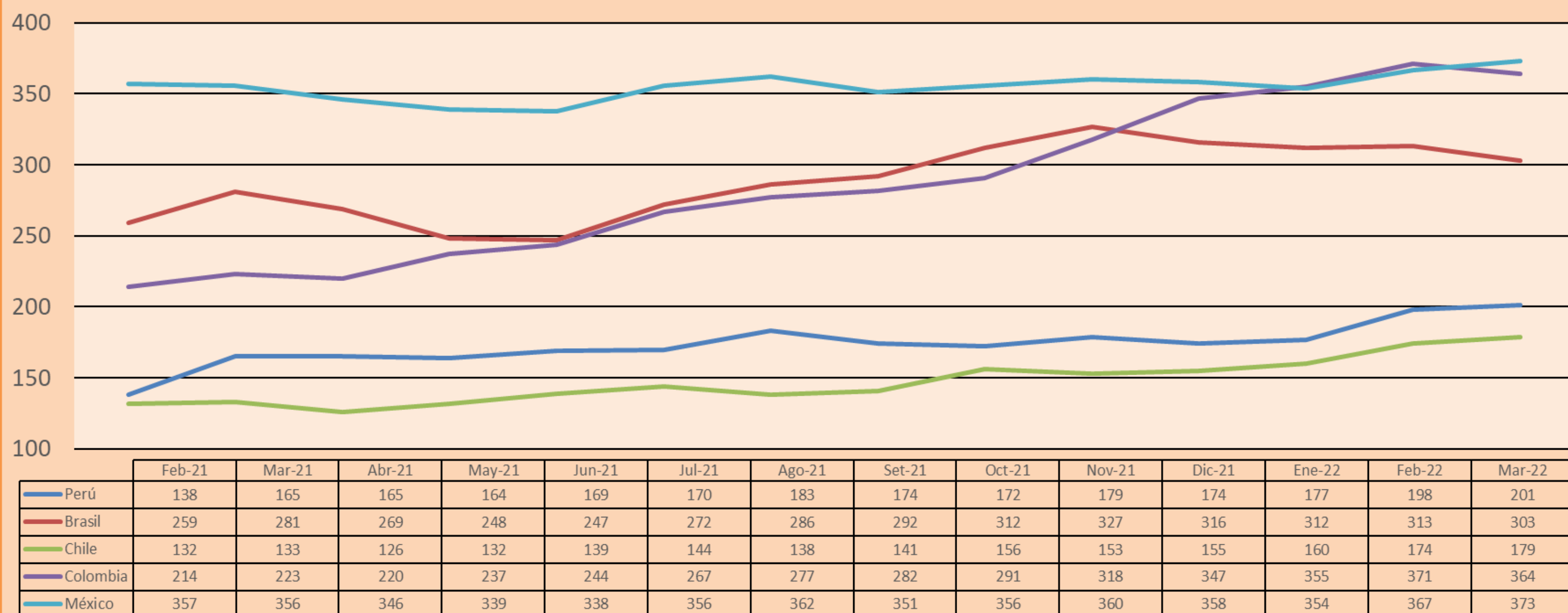
Moody's	S&P	Fitch	
Aaa	AAA	AAA	Prime
Aa1	AA+	AA+	High credit quality
Aa2	AA	AA	
Aa3	AA-	AA-	
A1	A+	A+	Medium-high grade, with low credit risk
A2	A	A	
A3	A-	A-	
Baa1	BBB+	BBB+	Moderate Credit Risk
Baa2	BBB	BBB	
Baa3	BBB-	BBB-	
Ba1	BB+	BB+	It has speculative elements and it is subject to substantial credit risk
Ba2	BB	BB	
Ba3	BB-	BB-	
B1	B+	B+	It is considered speculative and it has high credit risk
B2	B	B	
B3	B-	B-	
Caa1	CCC+	CCC	
Caa2	CCC		Bad credit conditions and it is subject to high credit risk
Caa3	CCC-		
Ca	CC		Very close to default or in default
	C		
C	D	DDD DD D	

Source: Bloomberg

Latin America Credit Rating			
Clasificadora de riesgo			
Country	Moody's	Fitch	S&P
Peru	Baa1	BBB	BBB
México	Ba2	BB-	BB-
Venezuela	C	WD	NR
Brazil	Ba2	BB-	BB-
Colombia	Baa2	BB+	BB+
Chile	A1	A-	A
Argentine	Ca	WD	CCC+
Panama	Baa2	BBB-	BBB

Source: Bloomberg

LATAM Country Risk(bps)



Source: BCRP

Capital Market Laboratory Coordinator: MS Javier Penny Pestana
Collaboration: Sebastian Ore, Fabrizio Lavalle, Miguel Solimano y Jhonatan Cueva
email: pulsobursatil@ulima.edu.pe
facebook: www.facebook.com/pulsobursatil.ul