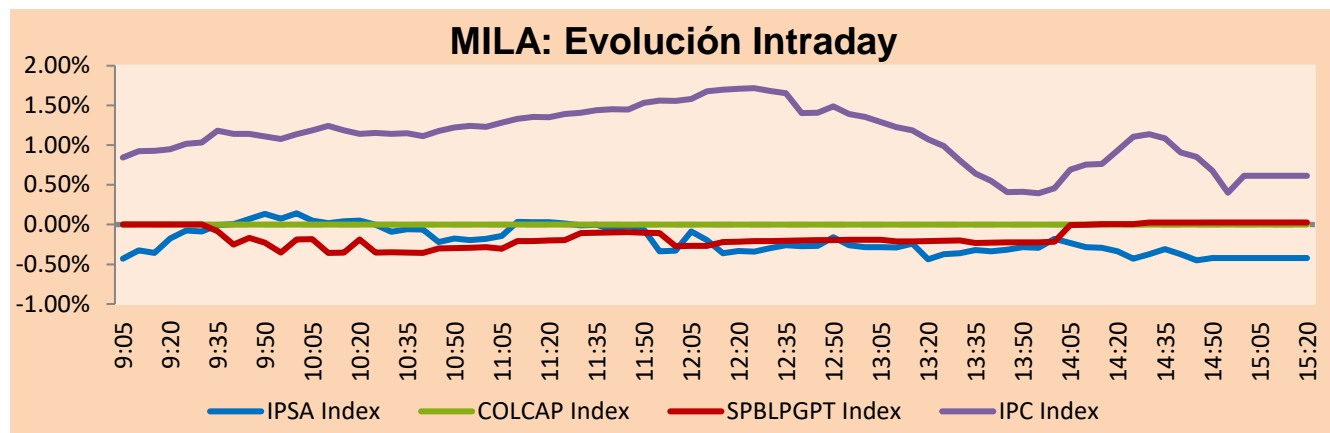


MILA

Lima, July 4, 2022

Main Indexes	Close	1 D	5 D	1 M	YTD	Cap. Burs. (US\$ bill)
▼ IPSA (Chile)	4,989.07	-0.09%	0.11%	-6.79%	15.80%	93.26
▼ IGPA (Chile)	26,281.84	-0.03%	-0.59%	-6.55%	21.86%	107.51
▲ COLSC (Colombia)	871.49	0.45%	1.13%	-7.81%	-10.44%	5.39
▲ COLCAP (Colombia)	1,357.98	2.65%	1.43%	-15.87%	-3.76%	67.54
▼ S&P/BVL (Perú)*	18,452.25	-0.04%	-2.14%	-11.61%	-12.60%	80.53
▼ S&P/BVL SEL (Perú)	485.85	-0.24%	-0.79%	-11.09%	-13.79%	72.77
▲ S&P/BVL LIMA 25	26,137.16	0.05%	-2.20%	-9.44%	-13.66%	79.72
▲ IPC (México)	48,036.38	0.61%	-0.54%	-5.23%	-9.83%	299.85
▲ S&P MILA 40	439.10	0.49%	-1.56%	-20.46%	-1.29%	6,080.00

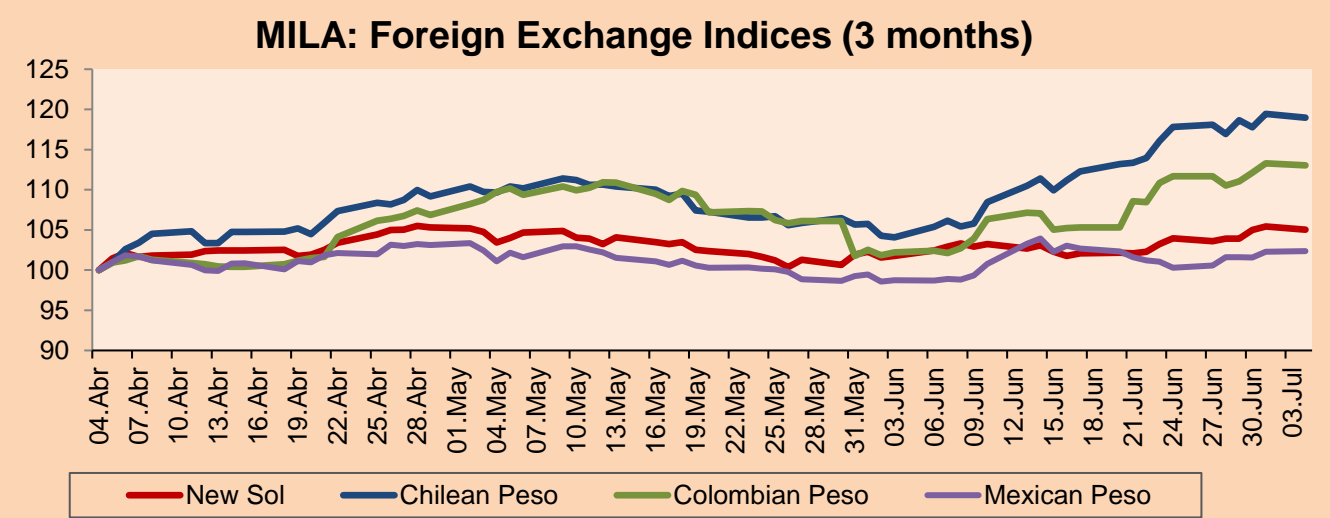
*Legend: Variation 1D: 1 day; 5D: 5 days; 1M: 1 Month; YTD: Var% 12/31/21 to date



Source: Bloomberg

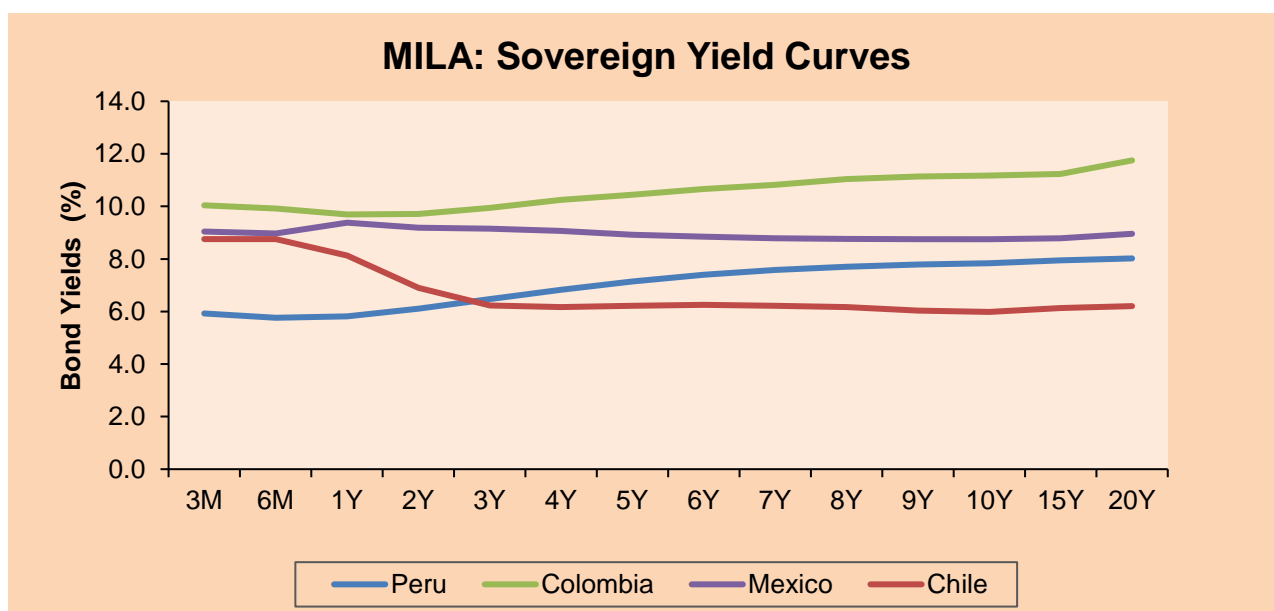
Currency	Price	1D*	5D*	30 D*	YTD*
▼ Sol (PEN)	3.8259	-0.43%	1.34%	3.16%	-4.33%
▼ Chilean Peso (CLP)	927.55	-0.38%	0.75%	14.30%	8.87%
▼ Colombian Peso (COP)	4,188.58	-0.23%	1.21%	10.57%	2.65%
▲ Mexican Peso (MXN)	20.28	0.07%	1.78%	3.67%	-1.23%

*Legend: Variation 1D: 1 day; 5D: 5 days; 1M: 1 Month; YTD: Var% 12/31/21 to date



Base: 04/04/22=100
Source: Bloomberg

Fixed Income	Currency	Price	Bid Yield (%)	Ask Yield (%)	Duration
PERU 7.35 07/21/25	USD	108.355	4.46	4.31	2.65
PERU 4.125 08/25/27	USD	98.645	4.45	4.39	4.51
PERU 8.75 11/21/33	USD	128.054	5.46	5.37	7.66
PERU 6.55 03/14/37	USD	110.581	5.53	5.45	9.11
PERU 5.625 11/18/2050	USD	105.226	5.29	5.25	14.30
CHILE 2.25 10/30/22	USD	99.98	2.93	1.68	0.31
CHILE 3.125 01/21/26	USD	97.279	4.00	3.92	3.27
CHILE 3.625 10/30/42	USD	81.619	5.12	5.06	13.64
COLOM 11.85 03/09/28	USD	140.349	3.94	3.78	4.33
COLOM 10.375 01/28/33	USD	120.972	7.60	7.34	6.52
COLOM 7.375 09/18/37	USD	93.954	8.11	8.03	8.68
COLOM 6.125 01/18/41	USD	79.945	8.28	8.23	9.76
MEX 4 10/02/23	USD	79.945	8.28	8.23	9.76
MEX5.55 01/45	USD	92.991	6.16	6.10	12.15



Source: Bloomberg

Equity

Largest gains	Exchange	Currency	Price	▲%	Largest losses	Exchange	Currency	Price	▼%
GRUPO BIMBO-A	Mexico	MXN	69.57	5.71	PARQUE ARAUCO	Chile	CLP	688.72	-2.54
GRUPO FIN INB-O	Mexico	MXN	32.85	4.42	CENCOSUD SHOPPIN	Chile	CLP	825.59	-2.03
GRUPO CARSO-A1	Mexico	MXN	76.79	3.07	SMU SA	Chile	CLP	85	-1.72
GRUPO MEXICO-B	Mexico	MXN	84.19	2.52	FALABELLA SA	Chile	CLP	2058.5	-1.51
ALFA SAB-A	Mexico	MXN	14.77	2.50	CONCHATORO	Chile	CLP	1232.5	-1.40

Per Turnover	Exchange	Amount (US\$)	Per Volume	Exchange	Volume
AMERICA MOVIL-L	Mexico	15,220,772	ITAU CORPBANCA	Chile	523,477,804
WALMART DE MEXIC	Mexico	8,804,098	ENEL AMERICAS SA	Chile	18,179,256
GRUPO F BANORT-O	Mexico	6,441,377	ENEL CHILE SA	Chile	15,678,997
FOMENTO ECON-UBD	Mexico	4,787,810	AMERICA MOVIL-L	Mexico	14,900,154
GRUPO MEXICO-B	Mexico	4,766,980	BANCO DE CHILE	Chile	10,949,837

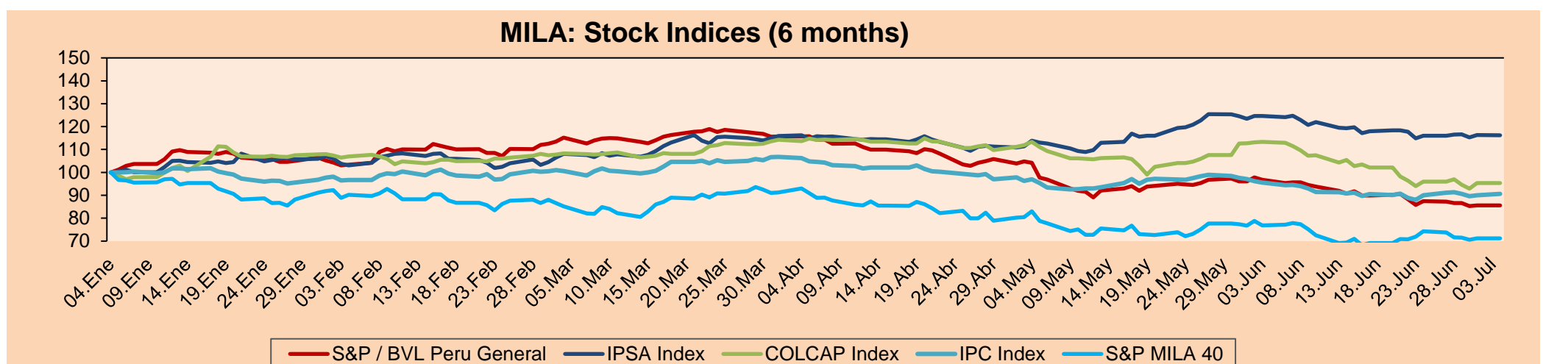
MILA

Peru: The BVL General index ended today's session with a negative result of -0.04%. The index maintains a negative annual cumulative trend of -12.54% in local currency, while the dollar-adjusted performance amounted to -8.58%. Then, the S&P/BVL Peru SEL varied by -0.24 while the S&P/BVL LIMA 25 by +0.05%. The spot PEN reached S/3.8259. Headline: Economy is stagnant and second quarter growth would be 1.6%, says BCP.

Chile: The IPSA index ended the day with a negative return of -0.09%. The most impacted sectors of the day were Real Estate (-2.22%) and Communication Services (-1.39%). The best performing stocks were Parque Arauco SA (-2.54%) and Cencosud Shopping (-2.03%). Headline: Uncertainty keeps investments in new real estate projects and home purchases on hold.

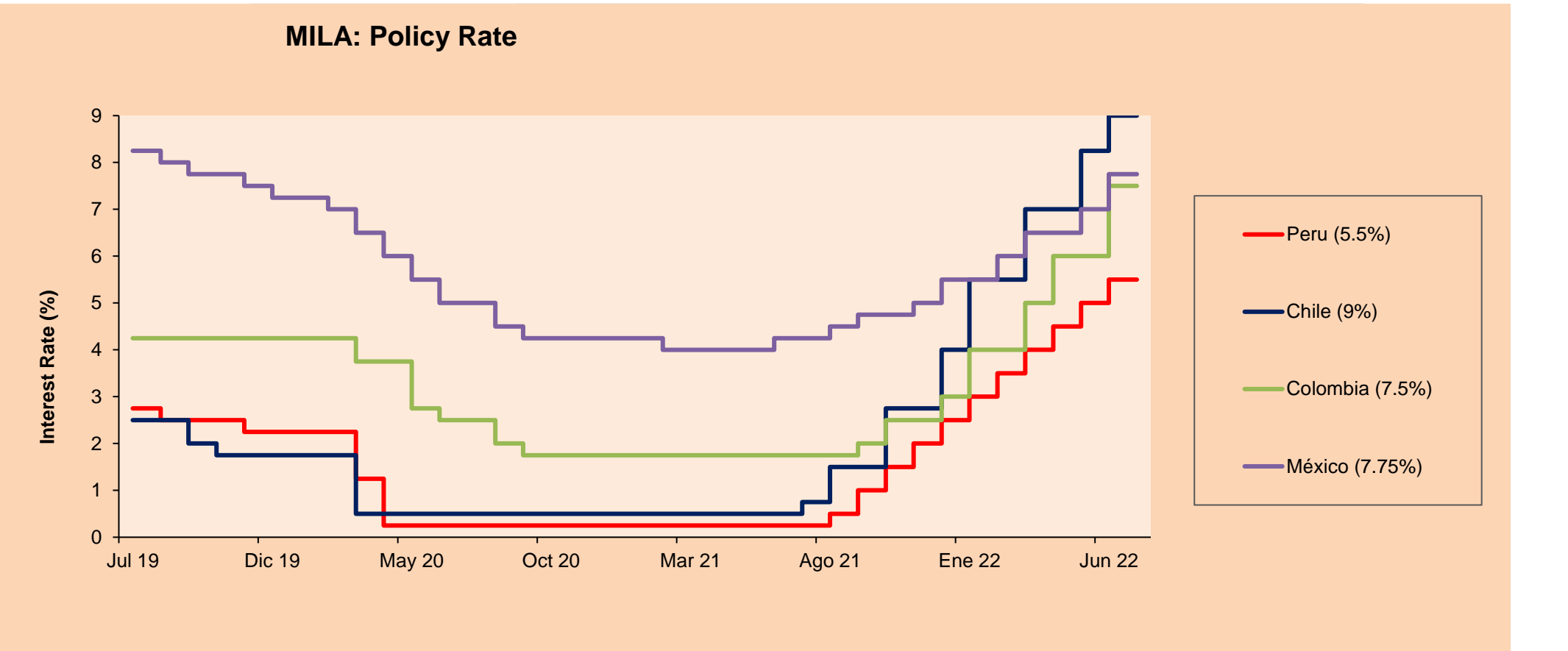
Colombia: The Colombian market did not trade due to the celebration of St. Peter and St. Paul's Day.

Mexico: The IPC index closed the day in positive territory, +0.61%. The best performing sectors of the day were Health Care (+1.42%) and Consumer Staples (+1.17%). The best performing stocks were Grupo Bimbo SAB (+5.71%) and Grupo Financiero Inbursa (+4.42%). Headline: Profit sharing rises 1% in 2022: labor secretary.



Base: 05/01/22=100
Source: Bloomberg

ETFs	Curr.	Close	1D	5D	30 D	YTD	Exchange
iShares MSCI All Peru Caped Index Fund	USD	25.93	0.00%	-2.10%	-17.37%	-12.46%	NYSE Arca
iShares MSCI All Chile Caped Index Fund	USD	24	0.00%	-3.46%	-21.95%	3.94%	Cboe BZX
Global X MSCI Colombia	USD	9.14	0.00%	-1.19%	-24.54%	-8.54%	NYSE Arca
iShares MSCI Mexico Capped	USD	46.46	0.00%	-2.31%	-9.31%	-8.18%	NYSE Arca
iShares MSCI Emerging Markets	USD	39.85	0.00%	-2.09%	-5.95%	-18.42%	NYSE Arca
Vanguard FTSE Emerging Markets	USD	41.4	0.00%	-1.94%	-4.70%	-16.30%	NYSE Arca
iShares Core MSCI Emerging Markets	USD	48.7	0.00%	-2.19%	-6.76%	-18.64%	NYSE Arca
iShares JP Morgan Emerging Markets Bonds	USD	55.38	0.00%	-0.11%	-3.77%	-11.84%	Cboe BZX
Morgan Stanley Emerging Markets Domestic	USD	4.47	0.00%	-1.54%	-5.30%	-18.43%	New York

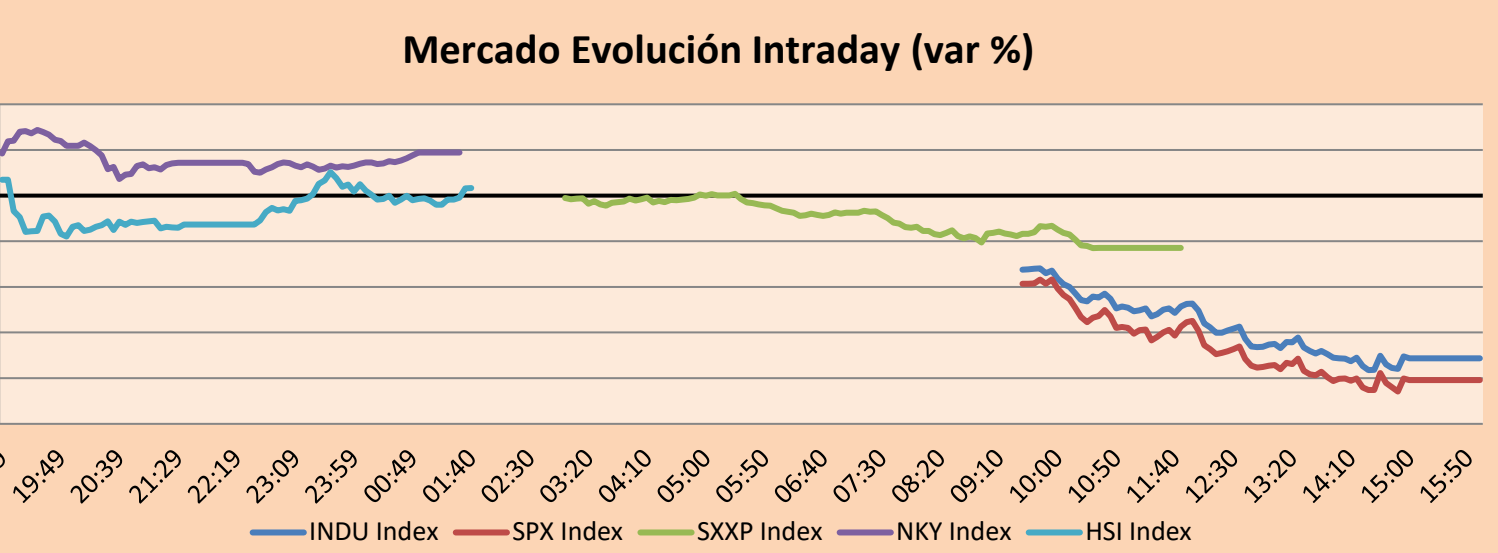


Source: Bloomberg

Capital Market Laboratory Coordinator: MS Javier Penny Pestana
Collaboration: Sebastian Ore, Fabrizio Lavalle, Miguel Solimano y Jhonatan Cueva
email: pulsobursatil@ulima.edu.pe
facebook: www.facebook.com/pulsobursatil.ul

WORLD

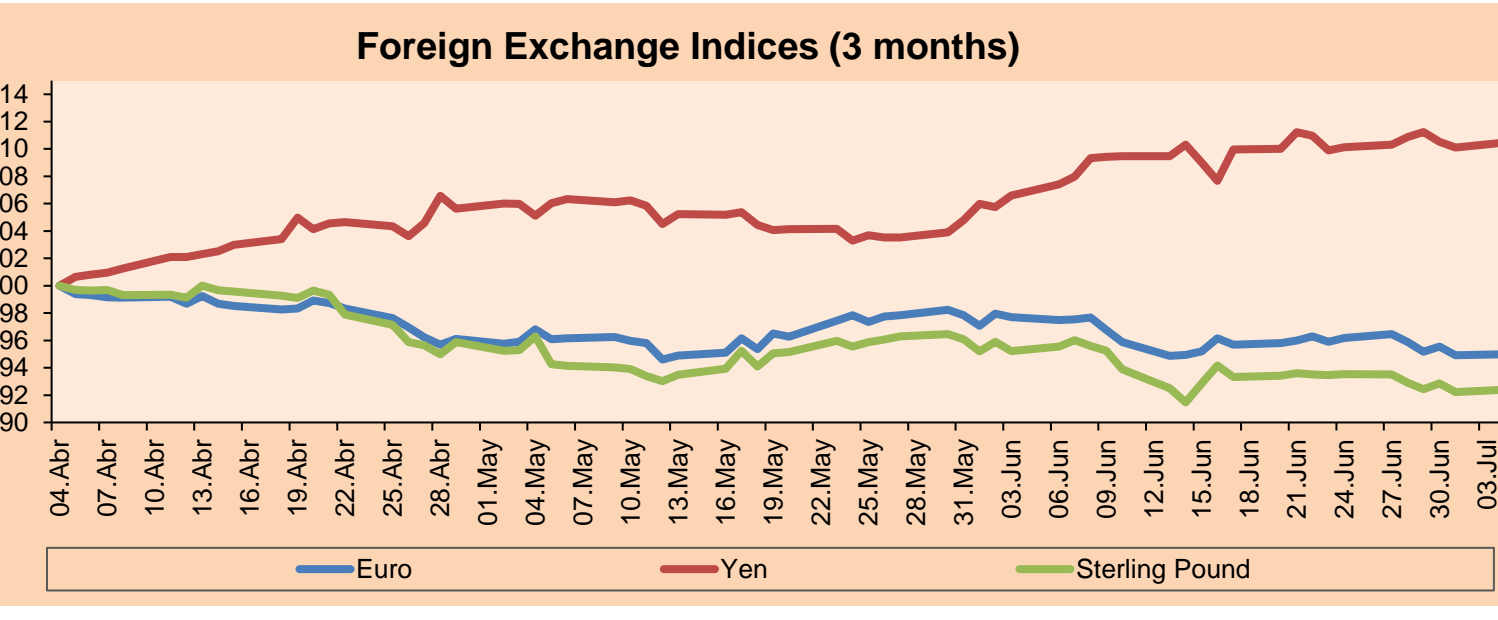
Main Indices	Close	1 D*	5 D*	1 M*	YTD*	Market Cap. (US\$ Mill.)
▲ Dow Jones (USA)	31,097.26	1.05%	-1.28%	-5.48%	-14.42%	9,733,363
▲ Standard & Poor's 500 (EEUU)	3,825.33	1.06%	-2.21%	-6.89%	-19.74%	33,616,940
▲ NASDAQ Composite (USA)	11,127.84	0.90%	-4.13%	-7.37%	-28.87%	19,029,487
▲ Stoxx EUROPE 600 (Europe)	409.31	0.54%	-1.39%	-6.99%	-16.09%	10,810,299
▼ DAX (Germany)	12,773.38	-0.31%	-3.13%	-11.66%	-19.59%	1,284,561
▲ FTSE 100 (United Kingdom)	7,232.65	0.89%	-0.35%	-3.99%	-2.06%	1,641,404
▲ CAC 40 (France)	5,954.65	0.40%	-1.53%	-8.18%	-16.75%	1,837,280
▼ IBEX 35 (Spain)	8,161.80	-0.17%	-0.98%	-6.45%	-6.33%	521,810
▼ MSCI AC Asia Pacific Index	156.53	-0.94%	-1.68%	-6.87%	-18.95%	21,817,748
▼ HANG SENG (Hong kong)	21,830.35	-0.13%	0.51%	3.55%	-6.70%	3,486,146
▲ SHANGHAI SE Comp. (China)	3,405.43	0.53%	0.78%	6.57%	-6.44%	6,942,978
▲ NIKKEI 225 (Japan)	26,153.81	0.84%	-2.67%	-5.79%	-9.16%	3,341,318
▲ S&P/ASX 200 (Australia)	6,612.57	1.11%	-1.39%	-8.65%	-11.18%	1,508,178
▼ KOSPI (South Korea)	2,300.34	-0.22%	-4.23%	-13.87%	-22.75%	1,348,651



Source: Bloomberg

Currency	Price	1 D*	5 D*	1 M*	YTD*
▲ Euro	1.0422	0.08%	-1.53%	-2.77%	-8.34%
▲ Yen	135.6200	0.30%	0.12%	3.62%	17.85%
▲ Sterling Pound	1.2118	0.19%	-1.20%	-2.96%	-10.45%
▼ Yuan	6.7006	-0.01%	0.13%	0.61%	5.42%
▼ Hong Kong Dollar	7.8457	-0.01%	-0.02%	0.01%	0.63%
▼ Brazilian Real	5.3283	-0.07%	1.72%	11.61%	-4.44%
▲ Argentine Peso	125.9652	0.40%	1.00%	4.38%	22.61%

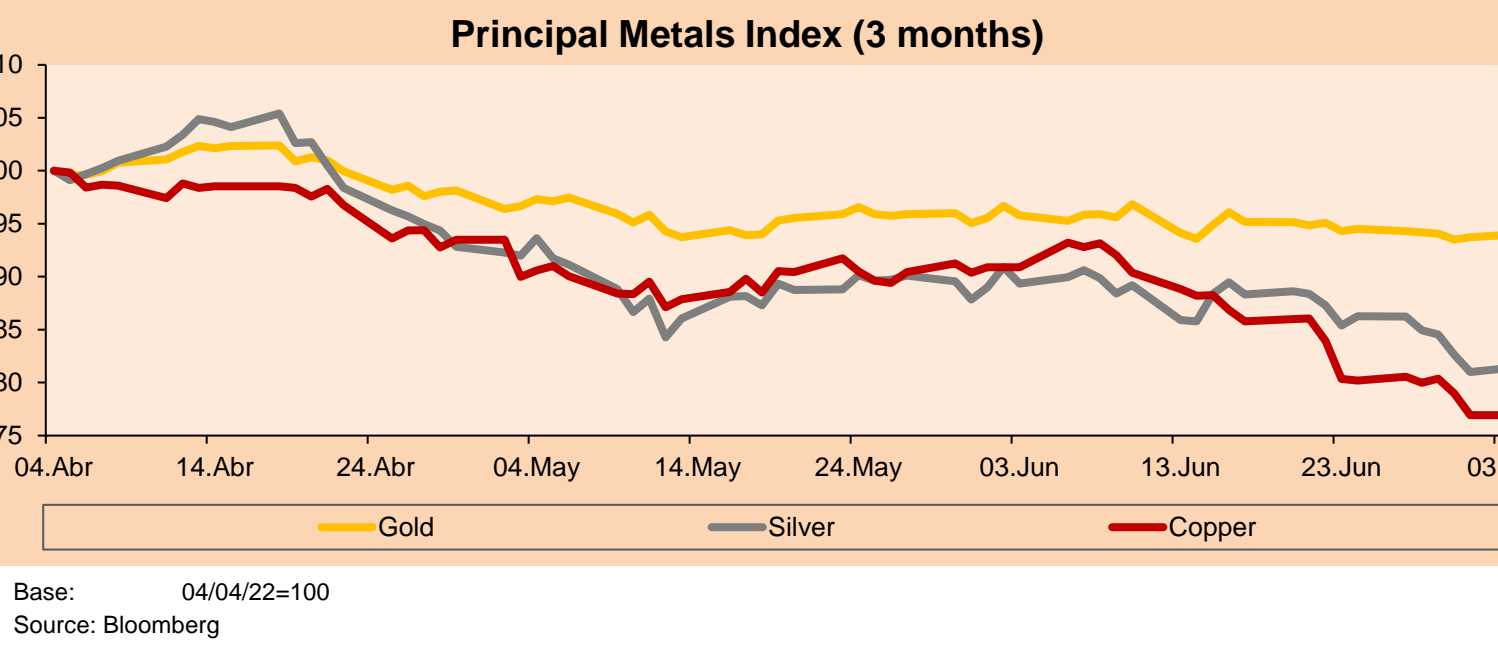
*Legend: Variation 1D: 1 Day; 5D: 5 Days; 1M: 1 Month; YTD: Var.% 12/31/21 to date



Base: 04/04/22=100
Source: Bloomberg

Commodities	Close	1 D*	5 D*	1 M*	YTD*
▲ Oro (US\$ Oz. T) (LME)	1,816.54	0.28%	-0.35%	-1.87%	-0.69%
▲ Plata (US\$ Oz. T) (LME)	19.99	0.55%	-5.55%	-8.85%	-14.25%
- Cobre (US\$ TM) (LME)	8,040.25	0.00%	-4.50%	-15.35%	-17.46%
- Zinc (US\$ TM) (LME)	3,074.00	0.00%	-9.16%	-20.86%	-14.37%
▲ Petróleo WTI (US\$ Barril) (NYM)	110.66	2.06%	0.99%	-4.79%	53.33%
- Estaño (US\$ TM) (LME)	26,890.00	0.00%	-1.88%	-23.61%	-31.70%
- Plomo (US\$ TM) (LME)	1,937.50	0.00%	-3.44%	-10.43%	-17.12%
- Azúcar #11 (US\$ Libra) (NYB-ICE)	18.07	0.00%	-1.04%	-7.19%	-1.58%
- Cacao (US\$ TM) (NYB-ICE)	2,314.00	0.00%	-3.98%	-7.62%	-9.93%
- Café Arábica (US\$ TM) (NYB-ICE)	224.65	0.00%	1.15%	-3.40%	0.07%

*Leyenda: Variación 1D: 1 Día; 5D: 5 Días, 1M: 1 Mes; YTD: Var.% 31/12/21 a la fecha



Base: 04/04/22=100
Source: Bloomberg

Equity

Germany (Stocks from DAX Index)					
Largest gains	Curr.	Price	▲%	Exchange	
BAS GY	EUR	41.885	1.49	Xetra	
DB1 GY	EUR	156.65	1.42	Xetra	
MUV2 GY	EUR	230.9	1.23	Xetra	
HEI GY	EUR	46.4	1.13	Xetra	

Europe (Stocks from STOXX EUROPE 600)					
Largest gains	Curr.	Price	▲%	Exchange	
LUNE SS	SEK	7.162	5.73	Stockholm	
BAKKA NO	NOK	668	5.61	Oslo	
PKN PW	PLN	71.24	4.73	Warsaw	
AKRBP NO	NOK	350.7	4.62	Oslo	

Largest losses					
	Curr.	Price	▼%	Exchange	
MBG GY	EUR	53.45	-2.82	Xetra	
IFX GY	EUR	21.685	-2.71	Xetra	
MTX GY	EUR	173.7	-2.03	Xetra	
PAH3 GY	EUR	61.76	-1.87	Xetra	

Global Overview:

United States:

Today the markets were closed for trading on July 4th, Independence Day.

Europe:

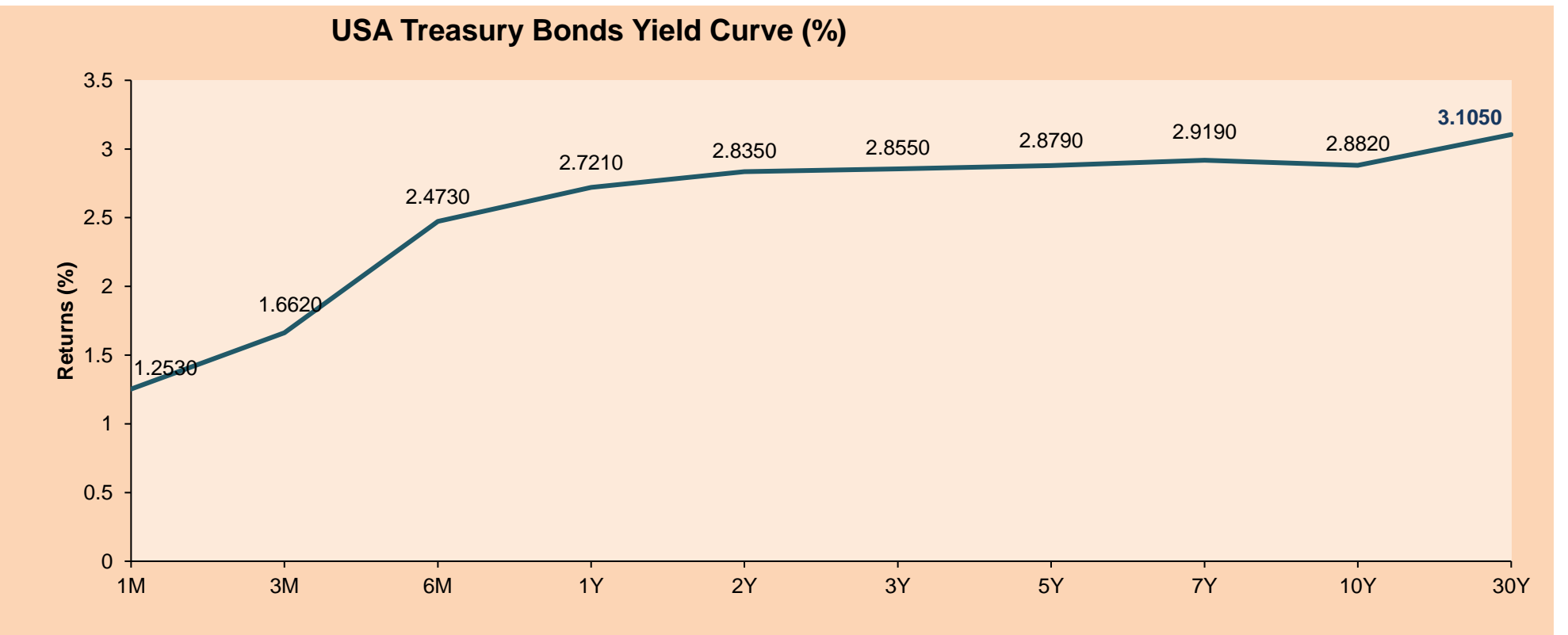
The main European indices ended the session with positive returns thanks to higher oil and gas prices. In addition, producer prices in the region rose less than expected, after reaching an all-time high. This strengthens the case for an interest rate hike by the ECB. The pan-European STOXX 600 index ended with gains as the oil and gas sector posted its best session in two months. Supply concerns, driven by lower OPEC production, unrest in Libya and sanctions on Russia, lifted crude oil prices. The U.K. market, reflected in the FTSE 100, rose this session on oil shortages, along with the economic activity needed to hold down oil prices. However, concerns about a recession could be the ceiling of its growth. Meanwhile, the DAX index closed in negative territory as the prospect of Russia halting its gas deliveries to Europe weighed on sentiment. Should this happen, Germany would enter a recession, while it is already facing tighter central bank policy. The French market rose this session thanks to oil stocks, especially TotalEnergies. The company benefited from international news reporting increased stress in global energy markets. Thus, FTSE 100 +0.89%; CAC 40 +0.40%; DAX -0.31%; STOXX 600 +0.54% ended at positive levels.

Asia:

Major Asian indices closed with mostly mixed performances. The Chinese market closed in positive territory, boosted by the new launch of the ETF Connect, but these had a halt to gains due to the increase in COVID-19 infections. Also, China's economic planner announced that he will take measures to prevent the rise in the price of pork. The Hang Seng index closed slightly negative today, in a scenario where China would seek to allow international investors to access its interest rate market through Hong Kong in the so-called "Swap Connect" program. The South Korean market fell this session, in a context where data was presented on the slowdown in manufacturing activity by the United States in June, contracting for the first time in 2 years. The Japanese market closed in positive territory, in a scenario where utility stocks rose by 4.11%, where Tokyo Electric Power Company Holdings increased by 12.95%. The Australian market ended higher, in a scenario where rising commodities added support to stocks, and investors were relieved that a survey showed that the Reserve Bank of Australia appeared to raise another 50 basis points and no more. Thus, NIKKEI +0.84%; HANG SENG -0.13%; CSI 300 +0.66%; S&P/ASX 200 +1.11%; KOSPI -0.22%; SHANGAI COMPOSITE +0.53% ended with mixed performances.

ETFs

	Curr.	Close	1D	5D	30 D	YTD	Exchange
SPDR S&P 500 ETF TRUST	USD	381.24	0.00%	-1.89%	-7.14%	-19.73%	NYSE Arca
ISHARES MSCI EMERGING MARKET	USD	39.85	0.00%	-2.09%	-5.95%	-18.42%	NYSE Arca
ISHARES IBOXX HIGH YLD CORP	USD	73.98	0.00%	-0.80%	-5.93%	-14.98%	NYSE Arca
FINANCIAL SELECT SECTOR SPDR	USD	31.88	0.00%	-1.09%	-8.57%	-18.36%	NYSE Arca
VANECK GOLD MINERS ETF	USD	28.16	0.00%	-4.45%	-13.51%	-12.08%	NYSE Arca
ISHARES RUSSELL 2000 ETF	USD	171.41	0.00%	-2.46%	-8.37%	-22.94%	NYSE Arca
SPDR GOLD SHARES	USD	168.32	0.00%	-0.93%	-2.47%	-1.54%	NYSE Arca
ISHARES 20+ YEAR TREASURY BO	USD	115.82	0.00%	3.78%	-0.18%	-21.84%	NASDAQ GM
INVESTCO QQQ TRUST SERIES 1	USD	282.13	0.00%	-3.53%	-7.86%	-29.09%	NASDAQ GM
ISHARES BIOTECHNOLOGY ETF	USD	120.17	0.00%	0.04%	3.15%	-21.26%	NASDAQ GM
ENERGY SELECT SECTOR SPDR	USD	72.58	0.00%	-1.51%	-18.91%	30.77%	NYSE Arca
PROSHARES ULTRA VIX ST FUTUR	USD	13.99	0.00%	2.04%	3.94%	12.55%	Cboe BZX
UNITED STATES OIL FUND LP	USD	81.67	0.00%	-1.52%	-8.72%	50.24%	NYSE Arca
ISHARES MSCI BRAZIL ETF	USD	27.07	0.00%	-2.97%	-23.18%	-3.56%	NYSE Arca
SPDR S&P OIL & GAS EXP & PR	USD	120.92	0.00%	-5.21%	-25.18%	26.13%	NYSE Arca
UTILITIES SELECT SECTOR SPDR	USD	71.85	0.00%	3.28%	-3.36%	0.38%	NYSE Arca
ISHARES US REAL ESTATE ETF	USD	93.71	0.00%	-0.13%	-4.72%	-19.31%	NYSE Arca
SPDR S&P BIOTECH ETF	USD	76.54	0.00%	-0.34%	7.48%	-31.64%	NYSE Arca
ISHARES IBOXX INVESTMENT GRA	USD	111.12	0.00%	1.87%	-1.83%	-16.15%	NYSE Arca
ISHARES JP MORGAN USD EMERGI	USD	86.15	0.00%	0.98%	-5.34%	-21.01%	NASDAQ GM
REAL ESTATE SELECT SECT SPDR	USD	41.59	0.00%	-0.17%	-5.13%	-19.73%	NYSE Arca
ISHARES CHINA LARGE-CAP ETF	USD	33.94	0.00%	-0.53%	6.50%	-7.22%	NYSE Arca
CONSUMER STAPLES SPDR	USD	73.22	0.00%	0.78%	-0.81%	-5.04%	NYSE Arca
VANECK JUNIOR GOLD MINERS	USD	33.05	0.00%	-6.21%	-19.13%	-21.18%	NYSE Arca
SPDR BLOOMBERG HIGH YIELD BO	USD	91.04	0.00%	-1.27%	-6.50%	-16.15%	NYSE Arca
VANGUARD REAL ESTATE ETF	USD	92.75	0.00%	-0.25%	-5.62%	-20.05%	NYSE Arca
GRAYSCALE BITCOIN TRUST BTC	USD	12.25	0.00%	-9.33%	-36.40%	-64.23%	OTC US



Source: Bloomberg

LIMA

Stocks

	Ticker	Currency	Price	1D*	5D*	30D*	YTD*	Frequency	Volume (US\$)	Beta	Dividend Yield (%)	Price Earning	Market Cap. (M US\$)	Economic Sector*	Index Weight
▲	ALICORC1 PE**	S/.	5.15	0.45%	1.13%	-7.81%	-10.44%	100.00%	7,551	0.80	16.21	11.54	1,147.54	Industrial	3.53%
-	ATACOCB1 PE**	S/.	0.09	0.00%	0.00%	-10.00%	-25.00%	10.00%	5	1.00	0.00	-	23.59	Mining	1.02%
-	BACKUS1 PE**	S/.	20.00	0.00%	-9.05%	-7.19%	-2.44%	100.00%	3,142	0.79	17.15	6.77	7,225.89	Industrial	0.82%
▲	BAP PE**	US\$	121.00	0.77%	-2.65%	-13.72%	-2.25%	100.00%	31,778	1.30	3.31	-	9,621.92	Diverse	5.82%
-	BVN PE**	US\$	6.77	0.00%	-5.31%	-22.45%	-7.26%	100.00%	680	1.42	0.00	-	1,866.05	Mining	5.88%
-	CASAGRC1 PE**	S/.	7.10	0.00%	-7.19%	-11.25%	-21.98%	90.00%	8,522	1.18	0.00	4.25	156.32	Agricultural	1.31%
-	BBVAC1 PE**	S/.	1.70	0.00%	6.92%	6.25%	-6.08%	100.00%	11,567	0.80	6.79	6.48	3,003.06	Finance	2.85%
-	CORAREC1 PE**	S/.	1.32	0.00%	-2.22%	-9.59%	-23.26%	80.00%	899	0.82	0.00	2.32	563.56	Industrial	1.72%
▲	CPACASC1 PE**	S/.	3.70	1.93%	0.00%	-6.57%	-25.25%	100.00%	3,710	0.76	21.35	10.28	444.77	Industrial	2.38%
-	CVERDEC1 PE**	US\$	26.50	0.00%	-6.03%	-9.56%	-28.82%	100.00%	101,532	0.89	0.00	7.16	9,276.48	Mining	5.25%
-	ENGEPEC1 PE**	S/.	2.10	0.00%	0.00%	9.38%	1.45%	100.00%	60,586	0.78	14.94	7.83	1,314.91	Public Services	1.44%
-	ENDISPC1**	S/.	3.80	0.00%	0.00%	1.33%	-5.00%	25.00%	17	0.85	0.00	6.82	634.24	Public Services	0.98%
▲	FERREYC1 PE**	S/.	2.10	0.48%	-0.47%	-1.87%	2.44%	100.00%	6,603	0.91	11.36	4.02	519.29	Diverse	4.90%
-	AENZAC1 PE**	S/.	0.94	0.00%	0.00%	-8.74%	-31.39%	100.00%	12	0.96	0.00	-	294.09	Diverse	4.05%
-	IFS PE**	US\$	22.90	0.00%	-2.05%	-16.73%	-14.71%	90.00%	8,807	0.97	0.00	-	2,643.07	Diverse	7.22%
-	INRETC1 PE**	US\$	25.75	0.00%	-0.92%	-16.94%	-26.32%	95.00%	1,313	0.75	0.00	17.07	2,800.23	Diverse	5.28%
-	LUSURC1 PE**	S/.	15.79	0.00%	-0.06%	6.69%	10.88%	60.00%	53	0.00	0.00	13.09	2,009.71	Public Services	1.81%
-	MINSUR1 PE**	S/.	3.60	0.00%	-4.76%	-20.88%	-8.86%	100.00%	283	1.11	0.00	1.34	2,712.78	Mining	3.09%
-	PML PE**	US\$	0.13	0.00%	0.00%	0.00%	8.33%	25.00%	1,300	1.13	0.00	-	34.37	Mining	2.12%
-	SCCO PE**	US\$	49.29	0.00%	-4.29%	-22.54%	-20.22%	100.00%	27,945	1.03	0.00	10.57	38,105.61	Industrial	2.12%
▲	SIDERC1 PE**	S/.	1.35	0.75%	-0.74%	-8.16%	-15.63%	80.00%	22,118	0.70	46.44	3.17	247.00	Mining	2.14%
-	TV PE**	US\$	0.40	0.00%	0.00%	-21.57%	-69.23%	85.00%	6,300	1.29	0.00	-	39.58	Industrial	1.43%
-	UNACEMC1 PE**	S/.	1.53	0.00%	2.00%	-5.56%	-36.25%	70.00%	8	1.05	0.00	-	727.08	Mining	2.93%
-	VOLCABC1 PE**	S/.	0.50	0.00%	-10.71%	-16.67%	-16.67%	100.00%	3,659	1.16	0.00	6.70	532.76	Industrial	3.00%
-	BROCALC1 PE**	S/.	4.70	0.00%	-7.84%	-32.76%	-9.62%	15.00%	5,349	0.00	0.00	34.51	199.62	Mining	5.90%
#####	RIMSEGC1 PE**	S/.	#N/A N/A	#¡VALOR!	#¡VALOR!	0.00%	#¡VALOR!	0.00%	433	0.00	0.00	-	#¡VALOR!	Finance	3.09%
-	CORAREC1 PE**	US\$	2.15	0.00%	-1.38%	1.42%	13.16%	45.00%	43,499	0.00	11.93	3.78	2,156.12	Mining	2.12%
-	ENGIEC1 PE**	S/.	5.40	0.00%	1.89%	-4.93%	-7.85%	25.00%	355	0.54	0.00	14.57	848.79	Diversas	2.12%
-	GBVLAC1 PE**	S/.	2.50	0.00%	4.60%	3.31%	-8.09%	25.00%	3,267	0.00	8.26	25.98	118.99	Diversas	2.14%

Quantity of shares: 28
Source: Bloomberg, Economática
* Bloomberg Industry Classification System
** PER is used in the stock market and original currency of the instrument

Up 5
Down 0
Hold 23

*Legend: Variation 1D: 1 Day; 5D: 5 Days; 1M: 1 Month; YTD: Var.% 12/31/21 to date

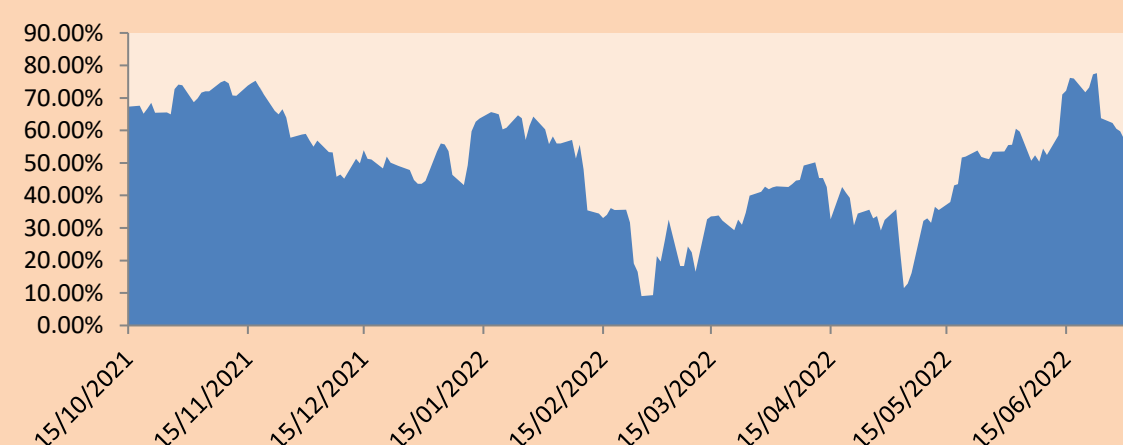
Sectorial Indices

		Close	1D*	5D*	30D*	YTD*	Beta
▼	S&P/BVLMining	329.00	-0.40%	-3.72%	-19.04%	-20.07%	0.99
▼	S&P/BVLConsumer	969.27	-0.18%	-2.22%	-8.09%	-15.57%	0.51
▲	S&P/BVLIndustrials	221.30	0.43%	0.02%	-3.99%	-14.25%	0.75
▲	S&P/BVLFinancials	867.86	0.25%	-0.94%	-10.62%	-4.22%	1.38
▲	S&P/BVLConstruction	220.59	0.41%	0.25%	-4.97%	-22.16%	0.66
-	S&P/BVLPublicSvcs	540.29	0.00%	0.94%	0.43%	-1.50%	0.10
-	S&P/BVLElectricUtil	527.46	0.00%	0.94%	0.43%	-1.50%	0.10

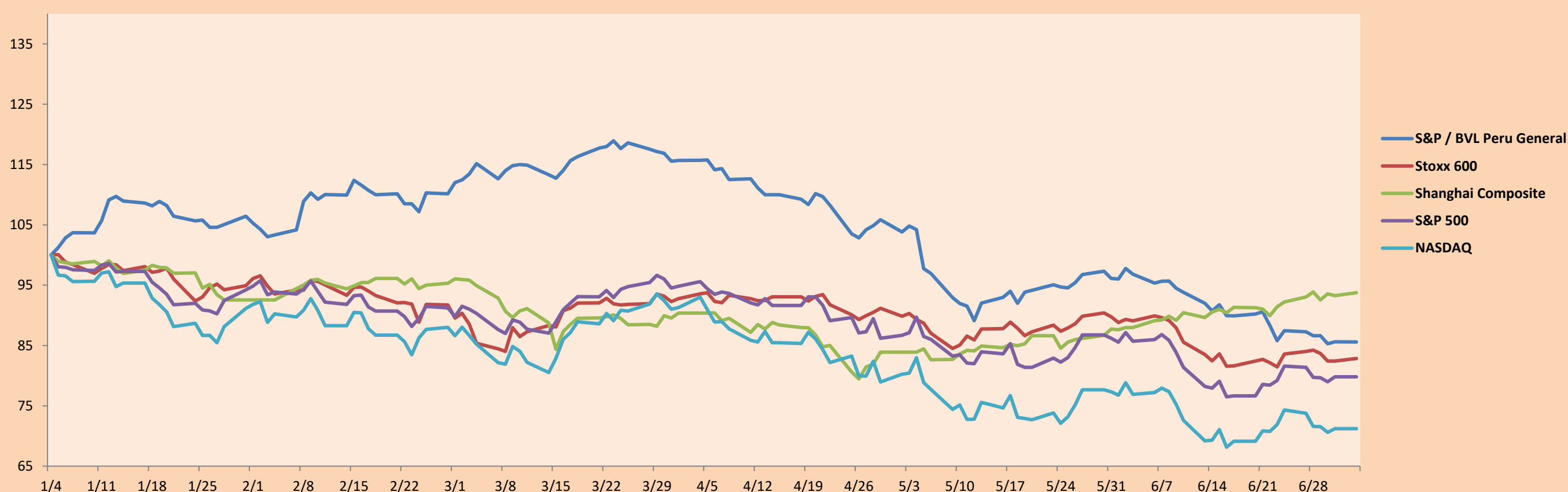
S&P/BVLConstructionTRPEN

*Legend: Variation 1D: 1 Day; 5D: 5 Days; 1M: 1 Month; YTD: Var.% 12/31/21 to date

Correlation Graph of Returns of Mining Index against Metallic Index of London (3 months)



Indices (6 months)



Base: 04/01/22=100
Source: Bloomberg

Capital Market Laboratory Coordinator: MS Javier Penny Pestana
Collaboration: Sebastian Ore, Fabrizio Lavalle, Miguel Solimano y Jhonatan Cueva
email: pulsobursatil@ulima.edu.pe
facebook: www.facebook.com/pulsobursatil.ul

SOVEREIGN RATING

RISK RATINGS

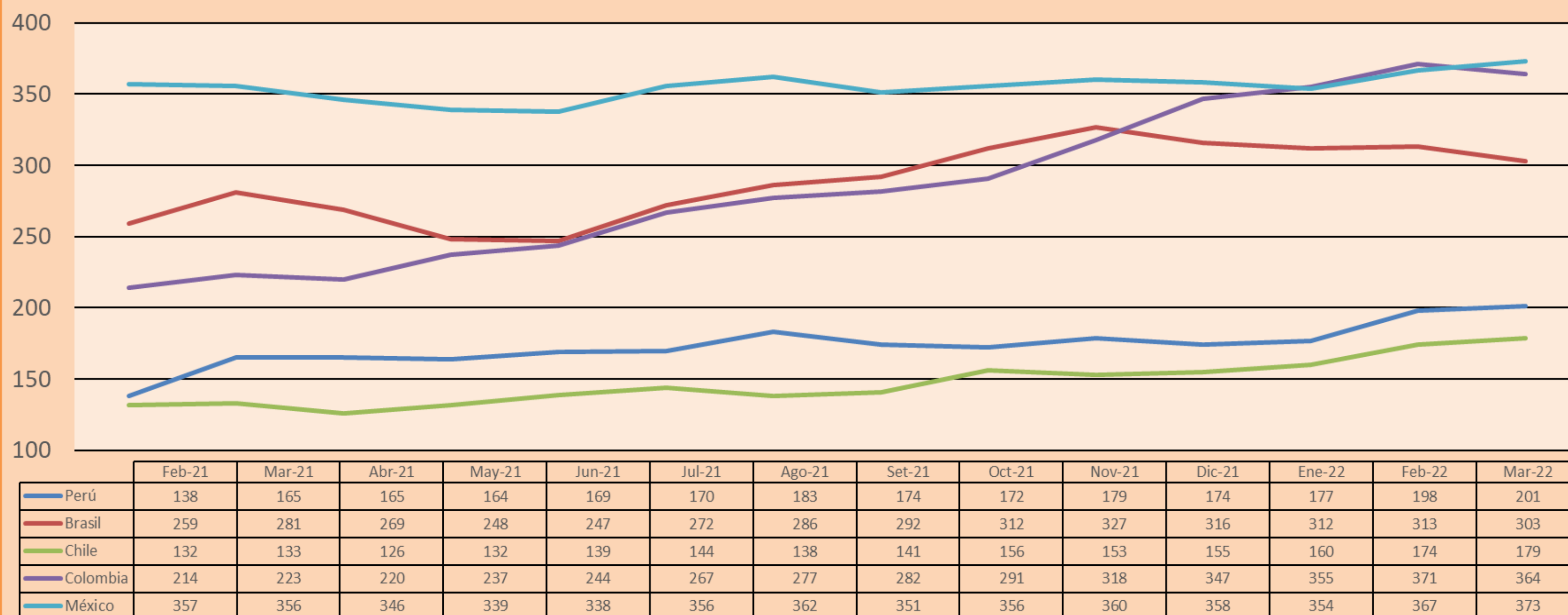
Moody's	S&P	Fitch	
Aaa	AAA	AAA	Prime
Aa1	AA+	AA+	High credit quality
Aa2	AA	AA	
Aa3	AA-	AA-	
A1	A+	A+	Medium-high grade, with low credit risk
A2	A	A	
A3	A-	A-	
Baa1	BBB+	BBB+	Moderate Credit Risk
Baa2	BBB	BBB	
Baa3	BBB-	BBB-	
Ba1	BB+	BB+	It has speculative elements and it is subject to substantial credit risk
Ba2	BB	BB	
Ba3	BB-	BB-	
B1	B+	B+	It is considered speculative and it has high credit risk
B2	B	B	
B3	B-	B-	
Caa1	CCC+	CCC	
Caa2	CCC	CCC	
Caa3	CCC-	CCC	
Ca	CC	CC	Very close to default or in default
	C	C	
C	D	DDD DD D	

Source: Bloomberg

Latin America Credit Rating			
Clasificadora de riesgo			
Country	Moody's	Fitch	S&P
Peru	Baa1	BBB	BBB
México	Ba2	BB-	BB-
Venezuela	C	WD	NR
Brazil	Ba2	BB-	BB-
Colombia	Baa2	BB+	BB+
Chile	A1	A-	A
Argentine	Ca	WD	CCC+
Panama	Baa2	BBB-	BBB

Source: Bloomberg

LATAM Country Risk(bps)



Source: BCRP

Capital Market Laboratory Coordinator: MS Javier Penny Pestana
Collaboration: Sebastian Ore, Fabrizio Lavalle, Miguel Solimano y Jhonatan Cueva
email: pulsobursatil@ulima.edu.pe
facebook: www.facebook.com/pulsobursatil.ul