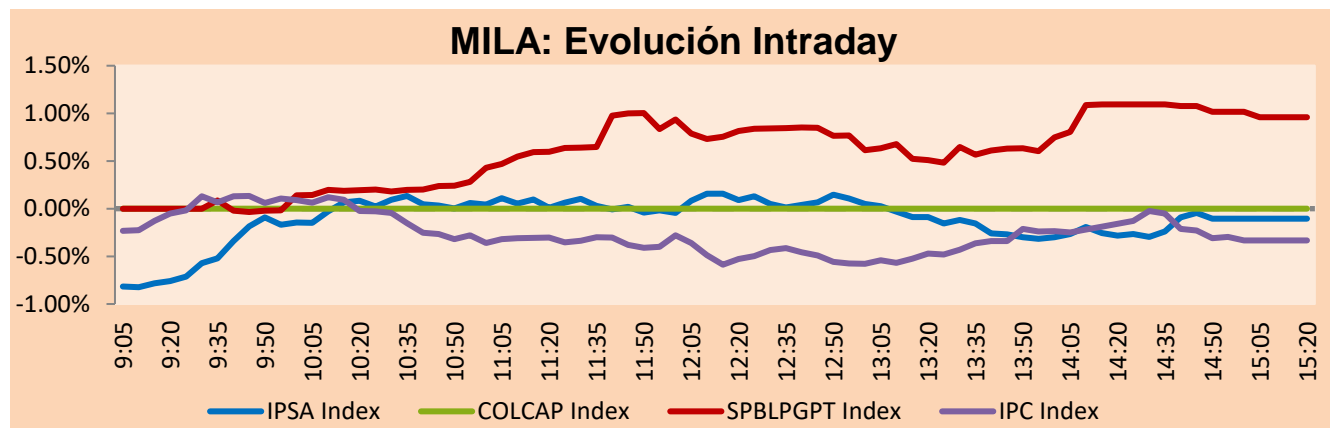


MILA

Lima, July 20, 2022

Main Indexes	Close	1 D	5 D	1 M	YTD	Cap. Burs. (US\$ bill)
▼ IPSA (Chile)	5,147.00	-0.26%	0.57%	4.54%	20.93%	96.06
▼ IGPA (Chile)	27,150.01	-0.28%	0.17%	4.90%	28.59%	110.95
▲ COLSC (Colombia)	870.46	0.65%	-0.39%	-0.77%	-12.04%	5.04
▲ COLCAP (Colombia)	1,303.01	1.66%	-3.33%	-6.25%	-9.24%	62.68
▲ S&P/BVL (Perú)*	18,644.97	0.96%	1.98%	1.63%	-9.23%	79.36
▲ S&P/BVL SEL (Perú)	481.40	0.86%	1.69%	2.40%	-11.02%	70.71
▲ S&P/BVL LIMA 25	26,358.95	1.07%	2.40%	2.42%	-9.58%	78.58
▼ IPC (México)	47,132.49	-0.27%	-0.69%	-0.81%	-11.11%	293.86
▼ S&P MILA 40	435.75	-0.05%	5.76%	-4.74%	-4.49%	6,041.16

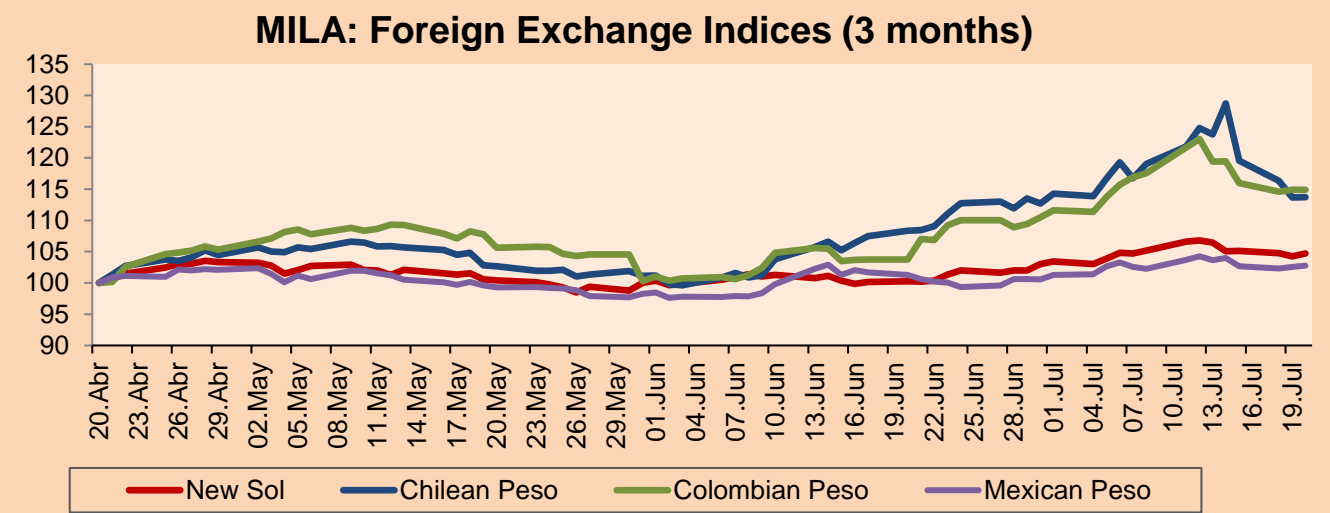
*Legend: Variation 1D: 1 day; 5D: 5 days; 1M: 1 Month; YTD: Var% 12/31/21 to date



Source: Bloomberg

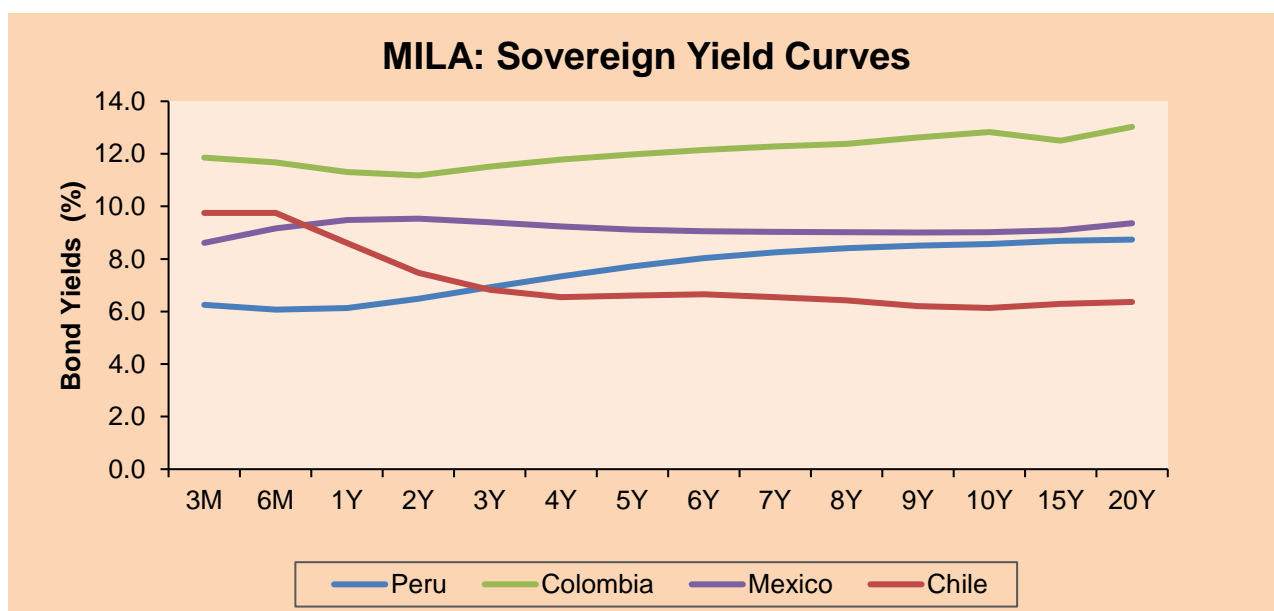
Currency	Price	1D*	5D*	30 D*	YTD*
▲ Sol (PEN)	3,889.00	0.42%	-1.65%	4.42%	-2.75%
▲ Chilean Peso (CLP)	926.38	0.06%	-8.10%	4.98%	8.73%
- Colombian Peso (COP)	4,321.85	0.00%	-3.75%	10.76%	5.92%
▲ Mexican Peso (MXN)	20.56	0.19%	-0.83%	1.45%	0.14%

*Legend: Variation 1D: 1 day; 5D: 5 days; 1M: 1 Month; YTD: Var% 12/31/21 to date



Base: 20/04/22=100
Source: Bloomberg

Fixed Income	Currency	Price	Bid Yield (%)	Ask Yield (%)	Duration
PERU 7.35 07/21/25	USD	108.037	4.52	4.39	2.70
PERU 4.125 08/25/27	USD	98.421	4.53	4.42	4.46
PERU 8.75 11/21/33	USD	127.517	5.50	5.42	7.59
PERU 6.55 03/14/37	USD	109.995	5.58	5.51	9.03
PERU 5.625 11/18/2050	USD	104.806	5.32	5.28	14.23
CHILE 2.25 10/30/22	USD	100.021	2.78	1.55	0.27
CHILE 3.125 01/21/26	USD	96.429	4.31	4.16	3.27
CHILE 3.625 10/30/42	USD	80.338	5.24	5.17	13.45
COLOM 11.85 03/09/28	USD	136.663	4.49	4.35	4.25
COLOM 10.375 01/28/33	USD	120.063	7.71	7.44	6.46
COLOM 7.375 09/18/37	USD	94.338	8.05	8.00	8.64
COLOM 6.125 01/18/41	USD	80.519	8.22	8.16	10.08
MEX 4 10/02/23	USD	80.519	8.22	8.156	10.08
MEX5.55 01/45	USD	93.421	6.11	6.07	12.47



Source: Bloomberg

Equity

Largest gains	Exchange	Currency	Price	▲%	Largest losses	Exchange	Currency	Price	▼%
INRETAIL PERU CO	Peru	USD	25.60	7.56	ARCA CONTINENTAL	Mexico	MXN	129.99	-4.86
ENGIE ENERGIA CH	Chile	CLP	384.85	5.72	CAP	Chile	CLP	8223.2	-3.49
GRUPO ELEKTRA SA	Mexico	MXN	1159.49	4.88	BUENAVENTURA-ADF	Peru	USD	5.95	-3.25
ITAU CORPBANCA	Chile	CLP	1.96	4.65	AMERICA MOVIL-L	Mexico	MXN	18.99	-2.86
EMPRESAS COPEC	Chile	CLP	7500.00	4.01	COCA-COLA FEMSA	Mexico	MXN	111.76	-2.78

Per Turnover	Exchange	Amount (US\$)	Per Volume	Exchange	Volume
GRUPO F BANORT-O	Mexico	43,457,732	ITAU CORPBANCA	Chile	818,417,769
AMERICA MOVIL-L	Mexico	33,810,843	BANCO DE CHILE	Chile	224,180,648
BANCO DE CHILE	Chile	21,283,447	BANCO SANTANDER	Chile	108,397,865
WALMART DE MEXIC	Mexico	20,107,092	ENEL CHILE SA	Chile	89,117,014
GRUPO MEXICO-B	Mexico	18,207,193	ENEL AMERICAS SA	Chile	53,622,815

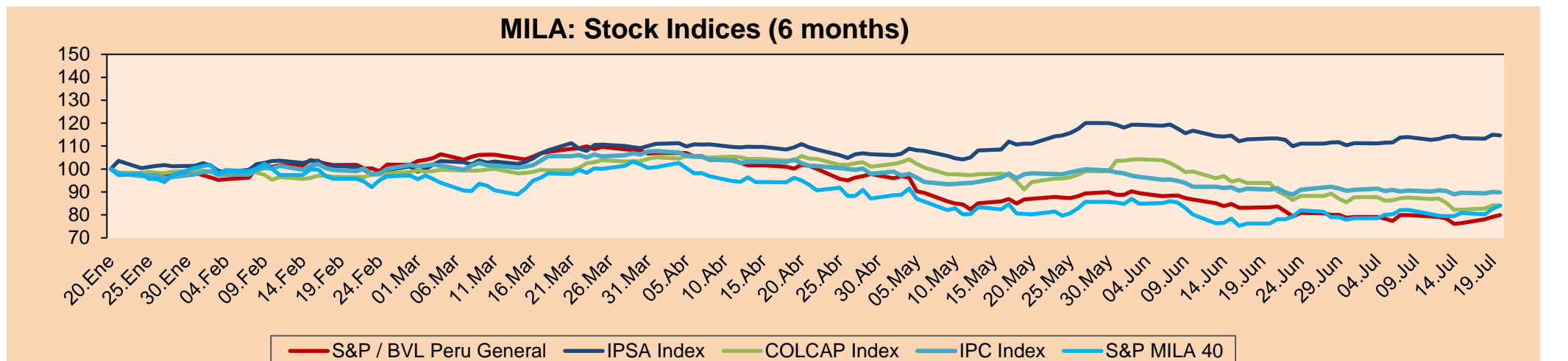
MILA

Peru: The LSE General index ended today's session with a positive result of +0.96%. The index maintains a negative annual cumulative trend of -11.68% in local currency, while the dollar-adjusted performance amounted to -9.18%. Then, the S&P/BVL Peru SEL varied by +0.86% while the S&P/BVL LIMA 25 by +1.07%. The spot PEN reached S/.3.8890. Headline: Peru's country risk drops five points and closes at 1.82 pps.

Chile: The IPSA index ended the day with a negative return of -0.26%. The most negatively affected sectors of the day were Non-basic consumer products (-2.44%) and Materials (-1.42%). The worst performing stocks were CAP SA (-3.49%) and Cia Sud Americana de Vapores (-2.82%). Headline: Construction and real estate companies on alert: banks increase financing requirements.

Colombia: The Colombian market did not trade due to the celebration of Independence Day.

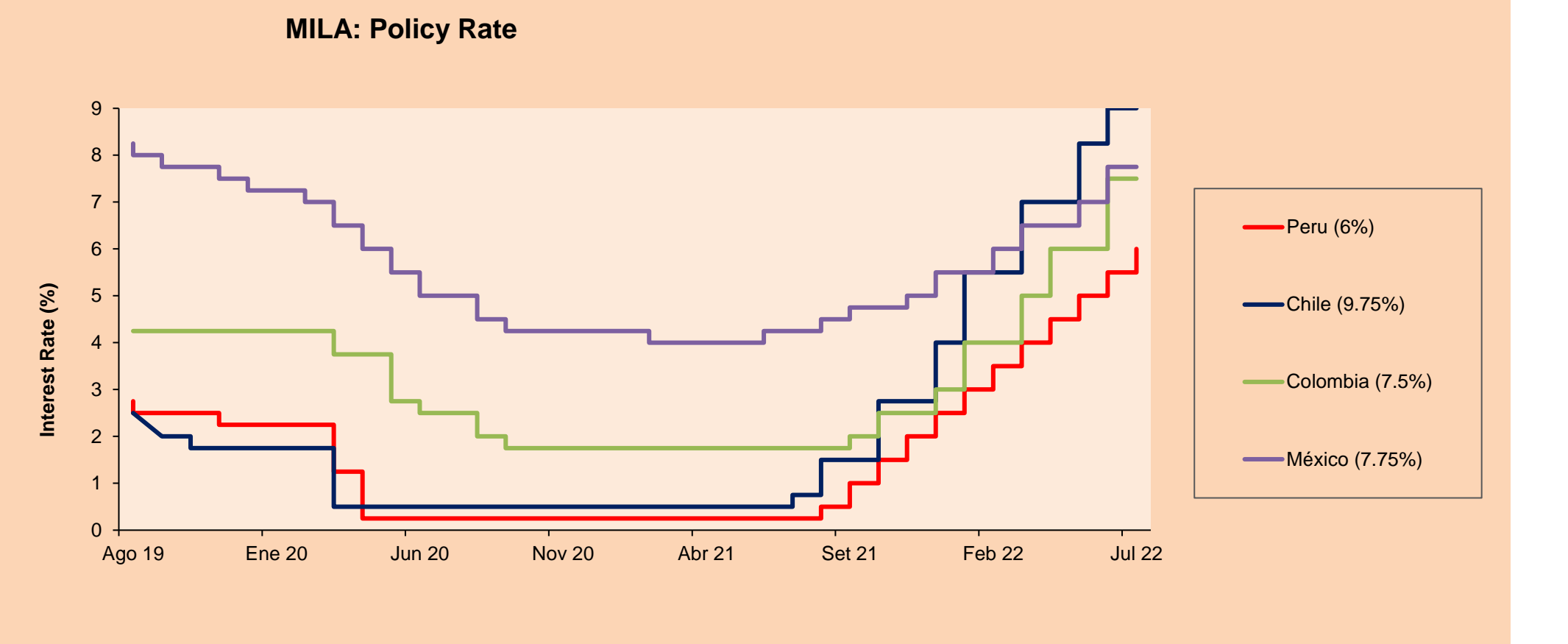
Mexico: The IPC index closed the day in positive territory +0.27%. The worst performing sectors of the day were Industrials (-0.32%) and Consumer Staples (-0.21%). The worst performing stocks were Arca Continental SAB (-4.86%) and America Movil SAB (-2.86%). Headline: Inflation 'takes flight' in July: Citibanamex survey forecasts it will exceed 8%.



Base: 21/01/22=100
Source: Bloomberg

ETFs

ETFs	Curr.	Close	1D	5D	30 D	YTD	Exchange
▲ iShares MSCI All Peru Caped Index Fund	USD	25.54	1.92%	5.19%	-8.29%	-13.77%	NYSE Arca
▲ iShares MSCI All Chile Caped Index Fund	USD	25.05	0.08%	9.68%	-2.83%	8.49%	Cboe BZX
▲ Global X MSCI Colombia	USD	8.7	0.56%	3.57%	-15.78%	-12.94%	NYSE Arca
▼ iShares MSCI Mexico Capped	USD	45.48	-0.39%	0.80%	-0.72%	-10.12%	NYSE Arca
▼ iShares MSCI Emerging Markets	USD	39.37	-0.43%	1.52%	-0.76%	-19.41%	NYSE Arca
▼ Vanguard FTSE Emerging Markets	USD	40.7	-0.42%	1.14%	-1.81%	-17.71%	NYSE Arca
▼ iShares Core MSCI Emerging Markets	USD	48.23	-0.43%	1.62%	-0.97%	-19.43%	NYSE Arca
▼ iShares JP Morgan Emerging Markets Bonds	USD	54.65	-0.13%	0.79%	0.24%	-13.01%	Cboe BZX
▲ Morgan Stanley Emerging Markets Domestic	USD	4.33	0.23%	2.12%	-2.26%	-20.99%	New York



Source: Bloomberg

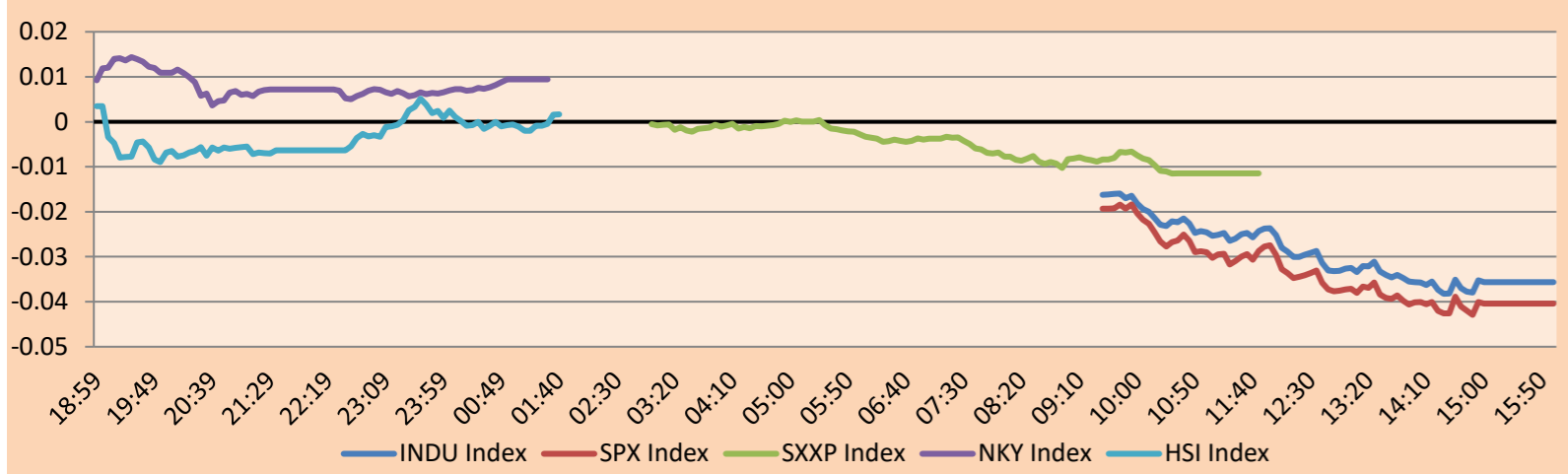
Capital Market Laboratory Coordinator: MS Javier Penny Pestana
Collaboration: Sebastian Ore, Fabrizio Lavalle, Miguel Solimano y Jhonatan Cueva
email: pulsobursatil@ulima.edu.pe
facebook: www.facebook.com/pulsobursatil.ul

WORLD

Main Indices	Close	1 D*	5 D*	1 M*	YTD*	Market Cap. (US\$ Mill.)
▲ Dow Jones (USA)	31,874.84	0.15%	3.58%	1.50%	-12.02%	10,065,317
▲ Standard & Poor's 500 (EEUU)	3,959.90	0.59%	4.16%	1.28%	-16.87%	34,842,502
▲ NASDAQ Composite (USA)	11,897.65	1.58%	5.78%	1.62%	-24.61%	20,185,631
▼ Stoxx EUROPE 600 (Europe)	422.51	-0.21%	2.35%	3.23%	-12.62%	11,588,182
▼ DAX (Germany)	13,281.98	-0.20%	4.12%	0.70%	-16.84%	1,363,878
▼ FTSE 100 (United Kingdom)	7,264.31	-0.44%	1.51%	1.35%	-1.06%	1,678,513
▼ CAC 40 (France)	6,184.66	-0.27%	3.07%	2.70%	-12.80%	1,988,243
▼ IBEX 35 (Spain)	8,028.90	-1.18%	1.06%	-1.92%	-7.21%	529,837
▲ MSCI AC Asia Pacific Index	158.53	1.34%	2.01%	0.29%	-17.32%	21,693,748
▲ HANG SENG (Hong kong)	20,890.22	1.11%	0.44%	-5.32%	-12.12%	3,264,127
▲ SHANGHAI SE Comp. (China)	3,304.72	0.77%	0.62%	-2.97%	-10.70%	6,614,170
▲ NIKKEI 225 (Japan)	27,680.26	2.67%	5.10%	4.56%	-3.79%	3,403,206
▲ S&P / ASX 200 (Australia)	6,759.21	1.65%	2.08%	3.21%	-8.79%	1,574,406
▲ KOSPI (South Korea)	2,386.85	0.67%	2.50%	1.57%	-19.28%	1,391,976

*Legend: Variation 1D: 1 Day; 5D: 5 Days; 1M: 1 Month; YTD: Var.% 12/31/21 to date

Mercado Evolución Intraday (var %)

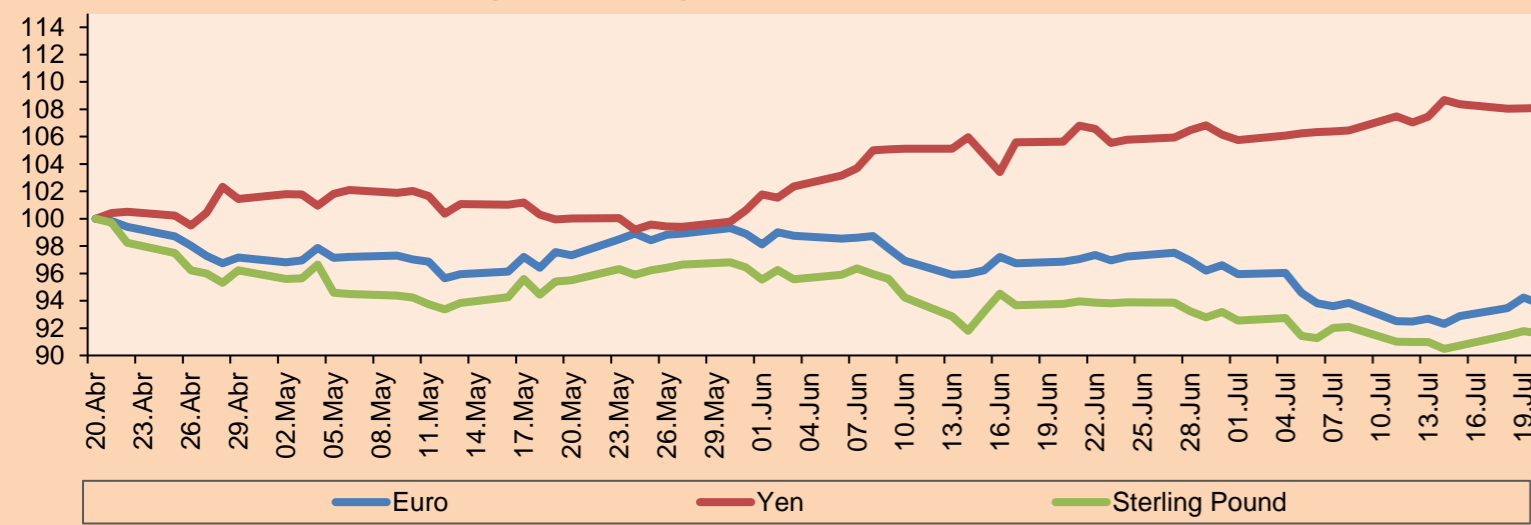


Source: Bloomberg

Currency	Price	1 D*	5 D*	1 M*	YTD*
▼ Euro	1,0180	-0.46%	1.20%	-3.15%	-10.47%
▲ Yen	138.2100	0.01%	0.60%	2.32%	20.10%
▼ Sterling Pound	1.1973	-0.18%	0.71%	-2.29%	-11.52%
▲ Yuan	6.7558	0.17%	0.55%	0.95%	6.29%
- Hong Kong Dollar	7.8500	0.00%	0.00%	0.00%	0.68%
▲ Brazilian Real	5.4709	1.05%	1.45%	5.39%	-1.88%
▲ Argentine Peso	129.3878	0.19%	1.23%	5.27%	25.94%

*Legend: Variation 1D: 1 Day; 5D: 5 Days; 1M: 1 Month; YTD: Var.% 12/31/21 to date

Foreign Exchange Indices (3 months)

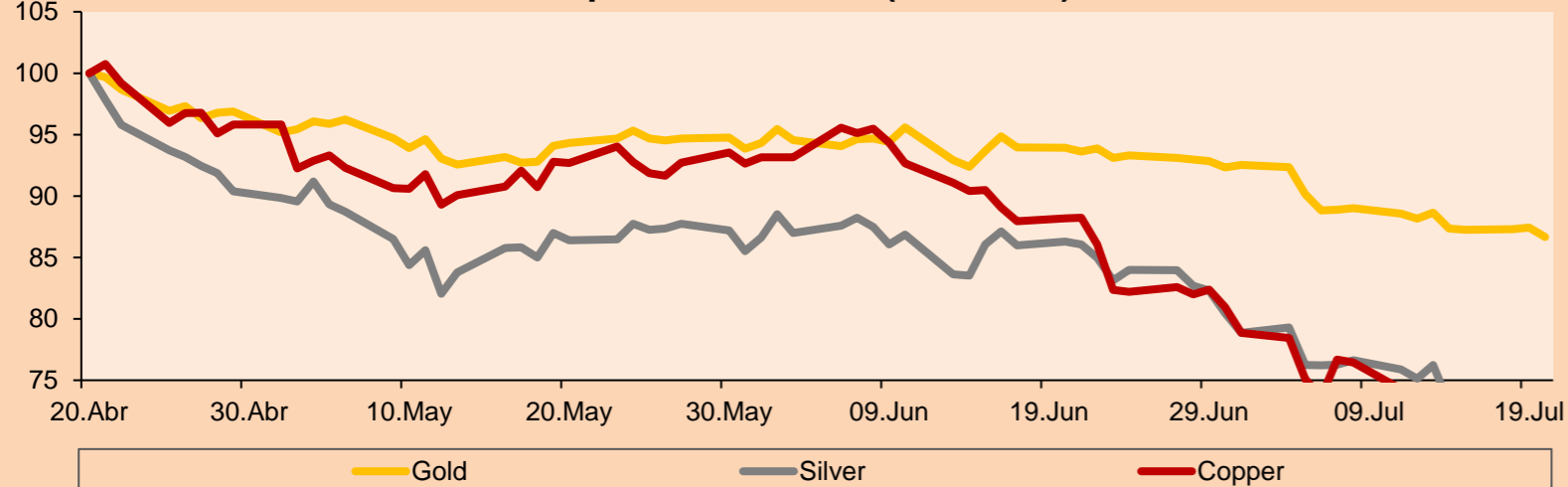


Base: 20/04/22=100
Source: Bloomberg

Commodities	Close	1 D*	5 D*	1 M*	YTD*
▼ Oro (US\$ Oz. T) (LME)	1,696.58	-0.88%	-2.24%	-7.73%	-7.25%
▼ Plata (US\$ Oz. T) (LME)	18.68	-0.44%	-2.79%	-14.11%	-19.86%
▲ Cobre (US\$ TM) (LME)	7,358.00	1.43%	0.65%	-18.15%	-24.46%
▲ Zinc (US\$ TM) (LME)	3,084.00	1.68%	1.48%	-14.18%	-14.09%
▼ Petróleo WTI (US\$ Barril) (NYM)	99.88	-0.85%	6.45%	-5.58%	39.58%
▼ Estaño (US\$ TM) (LME)	25,046.00	-0.18%	-2.26%	-19.19%	-36.39%
▲ Plomo (US\$ TM) (LME)	2,045.25	2.61%	3.79%	-0.93%	-12.51%
▼ Azúcar #11 (US\$ Libra) (NYB-ICE)	18.67	-0.90%	-2.46%	-0.32%	1.69%
▲ Cacao (US\$ TM) (NYB-ICE)	2,368.00	0.89%	2.82%	-2.67%	-7.82%
▲ Café Arábica (US\$ TM) (NYB-ICE)	218.15	0.76%	5.21%	-4.07%	-2.83%

*Leyenda: Variación 1D: 1 Día; 5D: 5 Días; 1M: 1 Mes; YTD: Var.% 31/12/21 a la fecha

Principal Metals Index (3 months)



Base: 20/04/22=100
Source: Bloomberg

Equity

Germany (Stocks from DAX Index)

Largest gains	Curr.	Price	▲%	Exchange	Largest losses	Curr.	Price	▼%	Exchange
IFX GY	EUR	24.69	1.60	Xetra	HNR1 GY	EUR	137.75	-2.03	Xetra
BAYN GY	EUR	58.84	1.33	Xetra	FRE GY	EUR	27.33	-1.97	Xetra
PUM GY	EUR	68.1	0.80	Xetra	MBG GY	EUR	55.39	-1.86	Xetra
DB1 GY	EUR	163.6	0.65	Xetra	BEI GY	EUR	98.84	-1.60	Xetra

Europe (Stocks from STOXX EUROPE 600)

Largest gains	Curr.	Price	▲%	Exchange	Largest losses	Curr.	Price	▼%	Exchange
UN01 GY	EUR	11.72	12.69	Xetra	TELIA SS	SEK	37.2	-5.82	Stockholm
SINCH SS	SEK	24.29	9.39	Stockholm	VOLCARB SS	SEK	74.62	-5.24	Stockholm
TKWY NA	EUR	16.33	9.07	EN Amsterdam	RBREW DC	DKK	634.6	-4.80	Copenhagen
DHER GY	EUR	41.61	7.85	Xetra	IG IM	EUR	5.275	-4.18	Borsa Italiana

Global Overview:

United States:

The main U.S. indices ended the session with positive performances. The Dow Jones index ended in positive territory, however, mortgage applications, according to the Mortgage Bankers Association indicated a reduction of 6.3% to this type of loans; likewise second home sales have been lower than expected, reaching 5.12 million homes, while it was expected around 5.35 homes. The S&P500 index also ended with a positive performance, in a scenario where Ford Motor, is preparing to cut at most 8,000 jobs in the coming weeks, where the automaker is looking to boost profits to fund its effort in the electric vehicle market. The job cuts would come with the creation of the new "Ford Blue" unit responsible for producing internal combustion engine vehicles. Finally, the NASDAQ index ended in positive territory, despite Joe Biden calling climate change an "existential threat" and unveiling new policies to combat its effects, including the opening of additional offshore areas to wind farms. Thus, DOW JONES +0.15%; S&P 500 +0.59%; NASDAQ +1.58% ended the day with positive results.

Europe:

Major Asian indices closed with mostly positive returns, boosted by gains on Wall Street as more companies posted good results, while currencies found relief in the dollar's retreat. The Chinese market closed in positive territory, amid a backdrop where China kept its benchmark lending rates for corporate and household loans unchanged. Policymakers adopted a cautious approach amid signs of economic recovery, rising domestic inflationary pressure and global rate hikes. The Hang Seng index finished higher, following positive sentiment on good US corporate earnings and the expected resumption of Russian gas supplies to Europe. The South Korean market rose this session as a weaker dollar, coupled with a rebound in the euro, attracted the largest amount of foreign inflows into the country during the week. The Japanese market closed in positive territory, following Wall Street, as more U.S. companies reported better-than-expected results, easing concerns about inflation and Fed tightening. The Australian market ended higher, where a review of the Reserve Bank of Australia's inflation target, monetary tools and board structure will be launched. This comes amid criticism of the central bank's policy management. Thus, NIKKEI +2.67%; HANG SENG +1.11%; CSI 300 +0.34%; S&P/ASX 200 +0.00%; KOSPI +0.00%; SHANGHAI COMPOSITE +0.27% ended with positive returns.

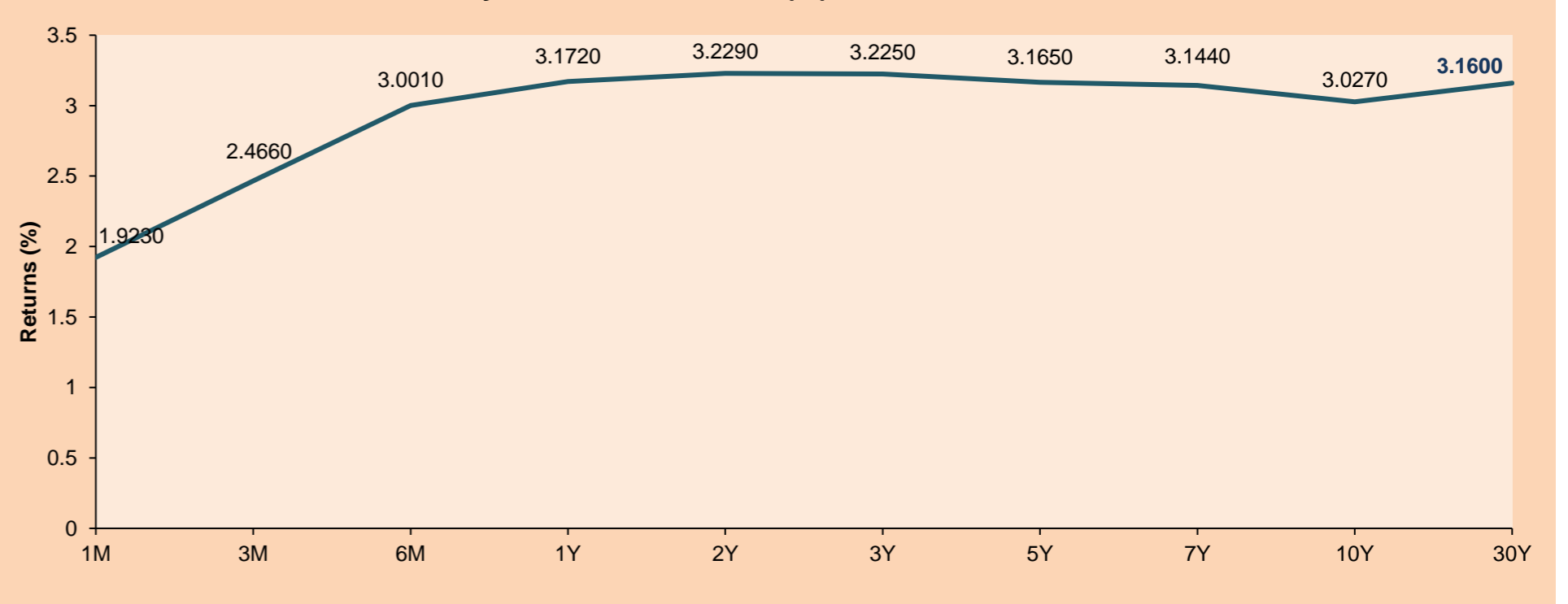
Asia:

The main Asian indices closed with positive performances. The Chinese market closed with positive returns, in a scenario where the governor of the country's central bank mentioned about a prudent implementation of monetary policy to support the real economy. Similarly, with mainland China, the HANG SENG index closed higher, where the financial sector and real estate stocks led gains, after regulators maintained their efforts to encourage lenders to extend loans. The Japanese market did not trade today, due to the celebration of the Sea Day, where people are thankful for the wealth provided by the ocean. The South Korean market ended the session in positive territory, where a decline was found due to concerns of an economic recession, after strong data was presented that raised optimism. In the same way, South Korea would be exempting investments in treasury bonds from taxes, with the intention of attracting consumption in fixed income by foreigners. The Australian market ended in positive territory, in a context where Treasurer Jim Chalmers warned that, in his first budget update to be given next week, he will have confronting news about inflation, interest rates and wages. Thus, NIKKEI +0.54%; HANG SENG +2.70%; CSI 300 +1.04%; SHANGHAI COMP. +1.55%; S&P/ASX 200 +1.23%; KOSPI +1.90% ended with positive performances.

ETFs

	Curr.	Close	1D	5D	30 D	YTD	Exchange
SPDR S&P 500 ETF TRUST	USD	394.77	0.64%	4.21%	7.90%	-16.88%	NYSE Arca
ISHARES MSCI EMERGING MARKET	USD	39.37	-0.43%	1.52%	-0.76%	-19.41%	NYSE Arca
ISHARES IBOXX HIGH YLD CORP	USD	76.09	0.44%	1.87%	2.75%	-12.55%	NYSE Arca
FINANCIAL SELECT SECTOR SPDR	USD	32.73	0.37%	4.44%	5.82%	-16.18%	NYSE Arca
VANECK GOLD MINERS ETF	USD	25.26	-2.92%	-5.85%	-16.88%	-21.14%	NYSE Arca
ISHARES RUSSELL 2000 ETF	USD	181.49	1.57%	5.94%	9.87%	-18.41%	NYSE Arca
SPDR GOLD SHARES	USD	158.04	-0.94%	-2.20%	-7.72%	-7.56%	NYSE Arca
ISHARES 20+ YEAR TREASURY BO	USD	114.61	0.26%	-1.57%	2.26%	-22.66%	NASDAQ GM
INVESCO QQQ TRUST SERIES 1	USD	303.03	1.59%	6.08%	10.32%	-23.83%	NASDAQ GM
ISHARES BIOTECHNOLOGY ETF	USD	123.94	0.26%	0.32%	13.13%	-18.79%	NASDAQ GM
ENERGY SELECT SECTOR SPDR	USD	73.02	0.97%	6.15%	-0.64%	31.57%	NYSE Arca
PROSHARES ULTRA VIX ST FUTUR	USD	12.25	-3.47%	-8.51%	-24.34%	-1.45%	Cboe BZX
UNITED STATES OIL FUND LP	USD	77.64	-0.53%	6.08%	-6.84%	42.83%	NYSE Arca
ISHARES MSCI BRAZIL ETF	USD	25.99	-1.03%	-0.99%	-6.91%	-7.41%	NYSE Arca
SPDR S&P OIL & GAS EXP & PR	USD	127.56	2.85%	10.74%	-1.51%	33.06%	NYSE Arca
UTILITIES SELECT SECTOR SPDR	USD	68.31	-1.33%	-1.90%	5.30%	-4.57%	NYSE Arca
ISHARES US REAL ESTATE ETF	USD	93.96	-0.30%	2.16%	7.19%	-19.10%	NYSE Arca
SPDR S&P BIOTECH ETF	USD	84.52	1.42%	1.54%	25.01%	-24.51%	NYSE Arca
ISHARES IBOXX INVESTMENT GRA	USD	111.24	-0.11%	-0.37%	1.65%	-16.06%	NYSE Arca
ISHARES JP MORGAN USD EMERGI	USD	84.61	0.79%	1.52%	-1.54%	-22.42%	NASDAQ GM
REAL ESTATE SELECT SECT SPDR	USD	41.51	-0.50%	1.87%	6.22%	-19.88%	NYSE Arca
ISHARES CHINA LARGE-CAP ETF	USD	31.75	-0.63%	0.03%	-1.49%	-13.20%	NYSE Arca
CONSUMER STAPLES SPDR	USD	72.50	-0.67%	-0.19%	5.33%	-5.98%	NYSE Arca
VANECK JUNIOR GOLD MINERS	USD	30.30	-2.54%	-3.10%	-17.57%	-27.74%	NYSE Arca
SPDR BLOOMBERG HIGH YIELD BO	USD	93.73	0.50%	1.97%	2.28%	-13.67%	NYSE Arca
VANGUARD REAL ESTATE ETF	USD	93.28	-0.24%	2.42%	6.36%	-19.59%	NYSE Arca
GRAYSCALE BITCOIN TRUST BTC	USD	15.58	1.30%	25.54%	24.94%	-54.51%	OTC US

USA Treasury Bonds Yield Curve (%)



Source: Bloomberg

Capital Market Laboratory Coordinator: MS Javier Penny Pestana
Collaboration: Sebastian Ore, Fabrizio Lavallo, Miguel Solimano y Jhonatan Cueva
email: pulsobursatil@ulima.edu.pe
facebook: www.facebook.com/pulsobursatil.ul

LIMA

Stocks

Ticker	Currency	Price	1D*	5D*	30D*	YTD*	Frequency	Volume (US\$)	Beta	Dividend Yield (%)	Price Earning	Market Cap. (M US\$)	Economic Sector*	Index Weight
▲ ALICORC1 PE**	S/.	5.05	0.03%	0.29%	-0.77%	-12.04%	100.00%	41,089	0.79	16.53	11.88	1,107.14	Industrial	3.53%
- ATACOBC1 PE**	S/.	0.09	0.00%	0.00%	-10.00%	-25.00%	10.53%	962	#N/A N/A	0.00	-	23.20	Mining	1.02%
▲ BACKUSI1 PE**	S/.	20.50	1.99%	3.54%	-7.66%	0.00%	84.21%	2,424	0.79	16.73	6.78	7,117.47	Industrial	0.82%
▲ BAP PE**	US\$	126.46	0.29%	7.17%	1.17%	2.17%	100.00%	64,421	1.29	3.16	-	10,056.10	Diverse	5.82%
▼ BVN PE**	US\$	5.95	-3.25%	-4.34%	-19.05%	-18.49%	94.74%	571,763	1.35	1.18	-	1,640.03	Mining	5.88%
▲ CASAGRC1 PE**	S/.	8.40	1.20%	7.55%	5.00%	-7.69%	89.47%	47,597	1.19	64.30	5.21	181.94	Agricultural	1.31%
▲ BBVAC1 PE**	S/.	1.50	2.74%	2.74%	-7.41%	-9.64%	89.47%	372,594	0.77	7.04	6.49	2,847.33	Finance	2.85%
▼ CORAREI1 PE**	S/.	1.48	-1.99%	12.12%	2.78%	-13.95%	89.47%	11,384	0.87	17.33	2.83	529.85	Industrial	1.72%
▲ CPACASC1 PE**	S/.	3.70	1.09%	2.21%	-7.50%	-25.25%	100.00%	2,870	0.77	21.35	10.69	436.93	Industrial	2.38%
- CVERDEC1 PE**	US\$	26.50	0.00%	3.92%	-8.62%	-28.82%	78.95%	13,278	0.90	7.01	7.30	9,276.48	Mining	5.25%
- ENGEPEC1 PE**	S/.	2.30	0.00%	6.98%	-16.06%	-19.01%	89.47%	9,429	0.82	25.72	6.53	1,033.69	Public Services	1.44%
- ENDISPC1**	S/.	3.70	0.00%	1.37%	-2.63%	-7.50%	21.05%	116	0.85	0.00	6.91	607.53	Public Services	0.98%
▲ FERREYC1 PE**	S/.	1.95	2.63%	-2.99%	-8.02%	-4.88%	100.00%	756,126	0.88	12.23	3.84	474.37	Diverse	4.90%
▲ AENZAC1 PE**	S/.	0.87	3.57%	-2.25%	-15.53%	-36.50%	52.63%	10,032	1.10	0.00	-	267.77	Diverse	4.05%
▲ IFS PE**	US\$	24.10	4.78%	5.70%	-3.64%	-10.24%	73.68%	2,844	0.92	9.96	6.52	2,781.57	Diverse	7.22%
▲ INRETC1 PE**	US\$	25.60	7.56%	6.67%	-11.72%	-26.75%	94.74%	5,336,818	0.85	5.35	19.52	2,783.92	Diverse	5.28%
- LUSURC1 PE**	S/.	16.00	0.00%	2.56%	0.00%	12.36%	36.84%	3,452	0.00	6.38	13.27	2,003.40	Public Services	1.81%
▼ MINSURI1 PE**	S/.	3.57	-0.83%	9.51%	-17.93%	-9.62%	94.74%	85,857	1.12	12.28	1.38	2,646.52	Mining	3.09%
- PML PE**	US\$	0.09	0.00%	0.00%	-30.77%	-25.00%	21.05%	934	1.09	0.00	-	24.32	Mining	2.12%
▲ SCCO PE**	US\$	48.81	0.64%	0.76%	-11.80%	-20.99%	84.21%	52,256	1.05	8.50	10.48	37,734.53	Industrial	2.12%
▲ SIDERC1 PE**	S/.	1.48	4.23%	4.23%	2.78%	-7.50%	73.68%	22,571	0.72	42.36	3.43	266.39	Mining	2.14%
- TV PE**	US\$	0.35	0.00%	-2.78%	-22.22%	-73.08%	47.37%	518	1.21	0.00	-	34.63	Industrial	1.43%
▼ UNACEMC1 PE**	S/.	1.60	-1.84%	-0.62%	-0.62%	-33.33%	73.68%	12,376	1.01	6.88	-	748.01	Mining	2.93%
- VOLCABC1 PE**	S/.	0.51	0.00%	8.51%	-13.56%	-15.00%	100.00%	52,759	1.25	0.00	7.19	1,513.22	Industrial	3.00%
- BROCALC1 PE**	S/.	4.65	0.00%	1.09%	-21.19%	-10.58%	36.84%	465	0.00	0.00	33.33	195.84	Mining	5.90%
#¡VALOR! RIMSEGC1 PE**	S/.	#N/A N/A	#¡VALOR!	#¡VALOR!	0.00%	#¡VALOR!	0.00%	74	0.00	0.00	11.82	#¡VALOR!	Finance	3.09%
- CORAREC1 PE**	US\$	2.01	0.00%	-3.37%	-7.80%	5.79%	57.89%	18,514	0.00	12.76	4.06	2,060.59	Mining	2.12%
- ENGIEC1 PE**	S/.	5.45	0.00%	0.93%	-2.68%	-7.00%	26.32%	12,749	0.54	0.00	14.62	842.75	Diversas	2.12%
- GBVLAC1 PE**	S/.	2.49	0.00%	0.00%	3.75%	-8.46%	42.11%	1,761	0.00	0.00	25.88	116.59	Diversas	2.14%

Quantity of shares: 28
Source: Bloomberg, Economática
* Bloomberg Industry Classification System
** PER is used in the stock market and original currency of the instrument
*Legend: Variation 1D: 1 Day; 5D: 5 Days; 1M: 1 Month; YTD: Var.% 12/31/21 to date

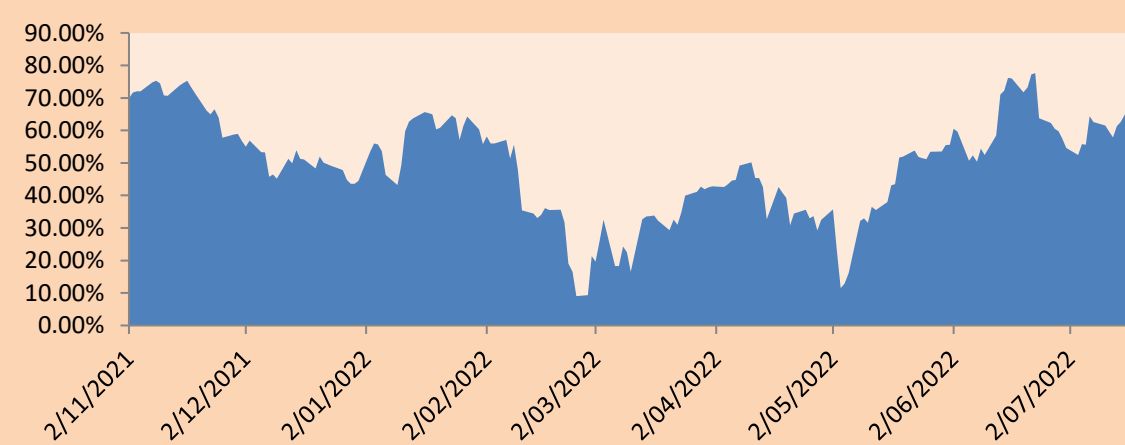
Sectorial Indices

	Close	1D*	5D*	30D*	YTD*	Beta
▲ S&P/BVLMining	323.66	0.09%	-0.80%	-10.09%	-21.37%	1.11
▲ S&P/BVLConsumer	976.96	3.66%	3.05%	-6.89%	-14.90%	0.54
▲ S&P/BVLIndustrials	216.39	0.71%	-0.97%	-6.15%	-16.15%	0.69
▲ S&P/BVLFinancials	918.93	1.11%	5.13%	4.78%	1.42%	1.34
▼ S&P/BVLConstruction	220.85	-0.10%	-0.06%	-5.30%	-22.07%	0.65
- S&P/BVLPublicSvcs	579.51	0.00%	3.03%	6.94%	5.65%	0.09
- S&P/BVLElectricUtil	565.74	0.00%	3.03%	6.94%	5.65%	0.09

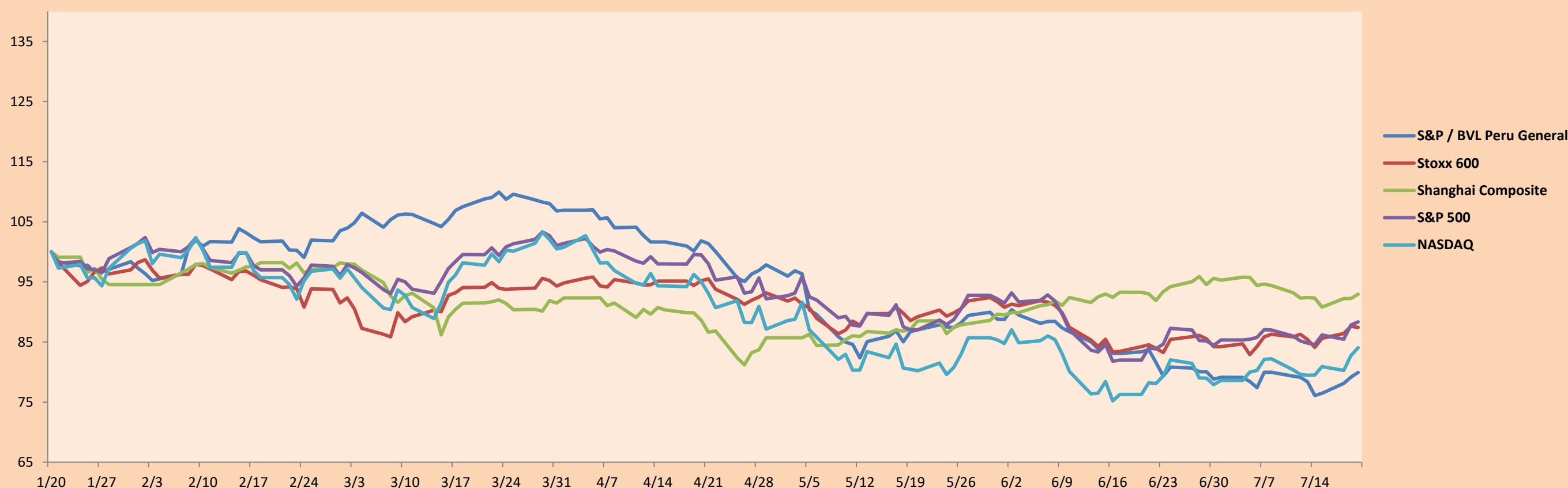
S&P/BVLConstructionTRPEN

*Legend: Variation 1D: 1 Day; 5D: 5 Days; 1M: 1 Month; YTD: Var.% 12/31/21 to date

Correlation Graph of Returns of Mining Index against Metallic Index of London (3 months)



Indices (6 months)



Base: 20/01/22=100
Source: Bloomberg

Capital Market Laboratory Coordinator: MS Javier Penny Pestana
Collaboration: Sebastian Ore, Fabrizio Lavallo, Miguel Solimano y Jhonatan Cueva
email: pulsobursatil@ulima.edu.pe
facebook: www.facebook.com/pulsobursatil.ul

SOVEREIGN RATING

RISK RATINGS

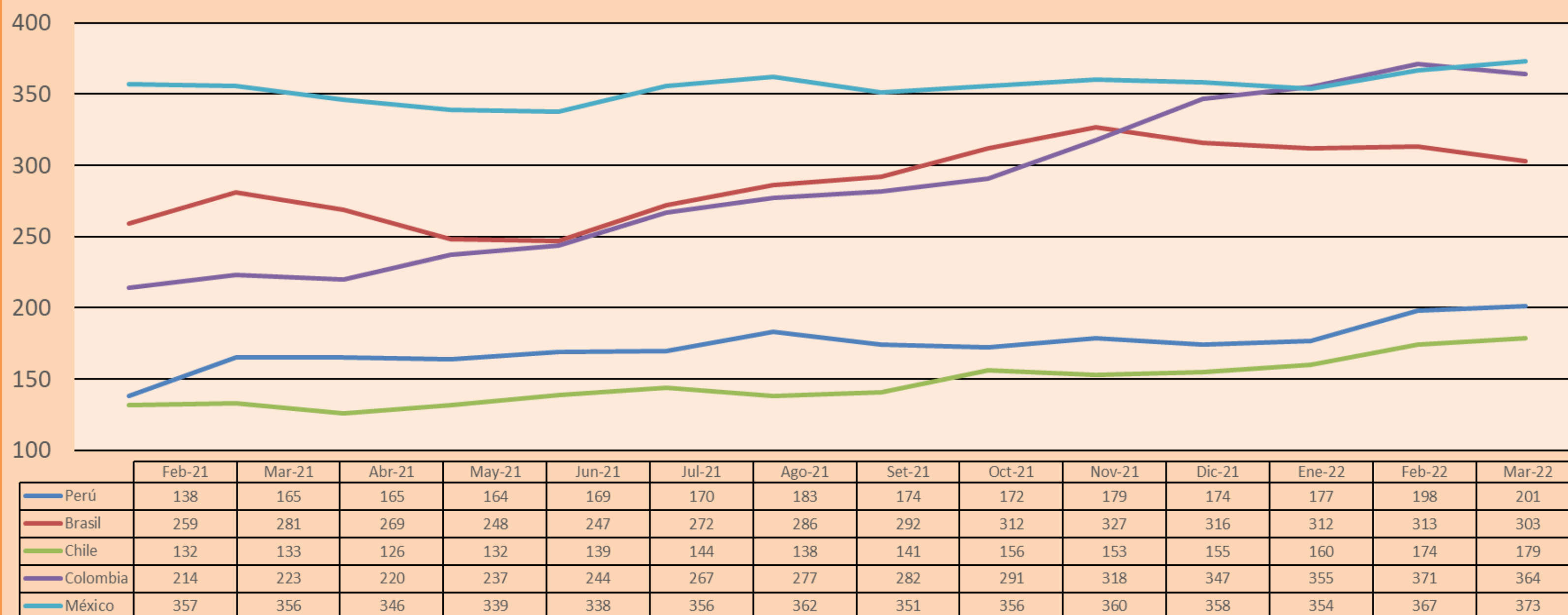
Moody's	S&P	Fitch	
Aaa	AAA	AAA	Prime
Aa1	AA+	AA+	High credit quality
Aa2	AA	AA	
Aa3	AA-	AA-	
A1	A+	A+	Medium-high grade, with low credit risk
A2	A	A	
A3	A-	A-	
Baa1	BBB+	BBB+	Moderate Credit Risk
Baa2	BBB	BBB	
Baa3	BBB-	BBB-	
Ba1	BB+	BB+	It has speculative elements and it is subject to substantial credit risk
Ba2	BB	BB	
Ba3	BB-	BB-	
B1	B+	B+	It is considered speculative and it has high credit risk
B2	B	B	
B3	B-	B-	
Caa1	CCC+	CCC	
Caa2	CCC		
Caa3	CCC-		
Ca	CC		
	C	DDD	
C	D	DD	Very close to default or in default
		D	

Source: Bloomberg

Latin America Credit Rating			
Clasificadora de riesgo			
Country	Moody's	Fitch	S&P
Peru	Baa1	BBB	BBB
México	Ba2	BB-	BB-
Venezuela	C	WD	NR
Brazil	Ba2	BB-	BB-
Colombia	Baa2	BB+	BB+
Chile	A1	A-	A
Argentine	Ca	WD	CCC+
Panama	Baa2	BBB-	BBB

Source: Bloomberg

LATAM Country Risk(bps)



Source: BCRP

Capital Market Laboratory Coordinator: MS Javier Penny Pestana
Collaboration: Sebastian Ore, Fabrizio Lavalle, Miguel Solimano y Jhonatan Cueva
email: pulsobursatil@ulima.edu.pe
facebook: www.facebook.com/pulsobursatil.ul