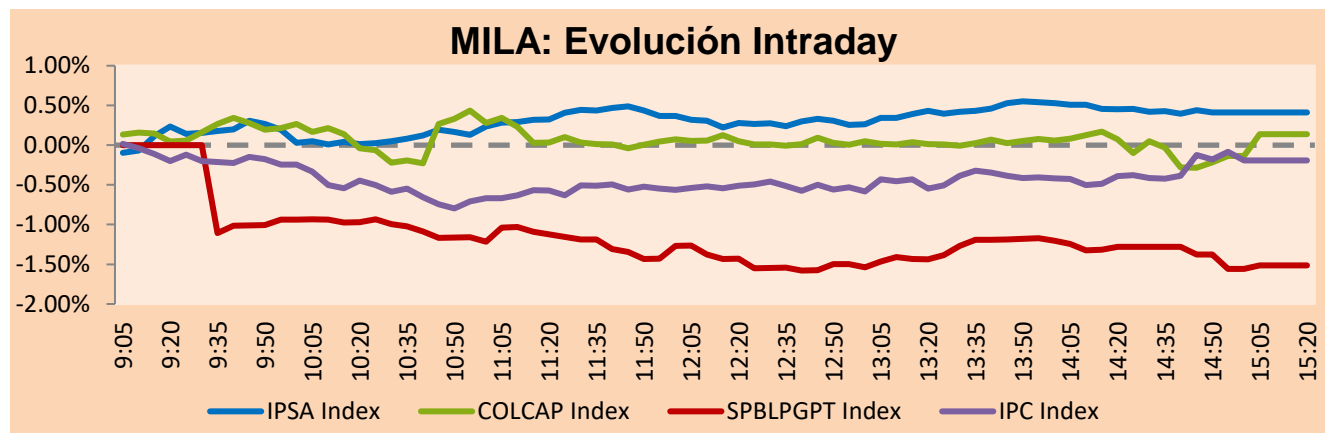


MILA

Lima, August 17, 2022

Main Indexes	Close	1 D	5 D	1 M	YTD	Cap. Burs. (US\$ bill)
▲ IPSA (Chile)	5,405.31	0.34%	3.23%	6.16%	25.46%	104.29
▲ IGPA (Chile)	28,858.82	0.42%	3.55%	7.08%	33.82%	120.23
▼ COLSC (Colombia)	887.57	-0.52%	0.54%	4.00%	-8.79%	3.65
▲ COLCAP (Colombia)	1,323.22	0.14%	0.09%	3.85%	-6.22%	62.34
▼ S&P/BVL (Perú)*	19,915.33	-1.51%	-2.08%	11.67%	-5.67%	84.03
▼ S&P/BVL SEL (Perú)	523.34	-1.64%	-1.63%	13.79%	-7.14%	75.35
▼ S&P/BVL LIMA 25	28,836.94	-1.22%	-1.27%	14.34%	-4.75%	83.26
▼ IPC (México)	48,734.04	-0.14%	1.94%	3.52%	-8.52%	310.81
▼ S&P MILA 40	466.65	-0.92%	3.87%	12.29%	4.90%	6,210.69

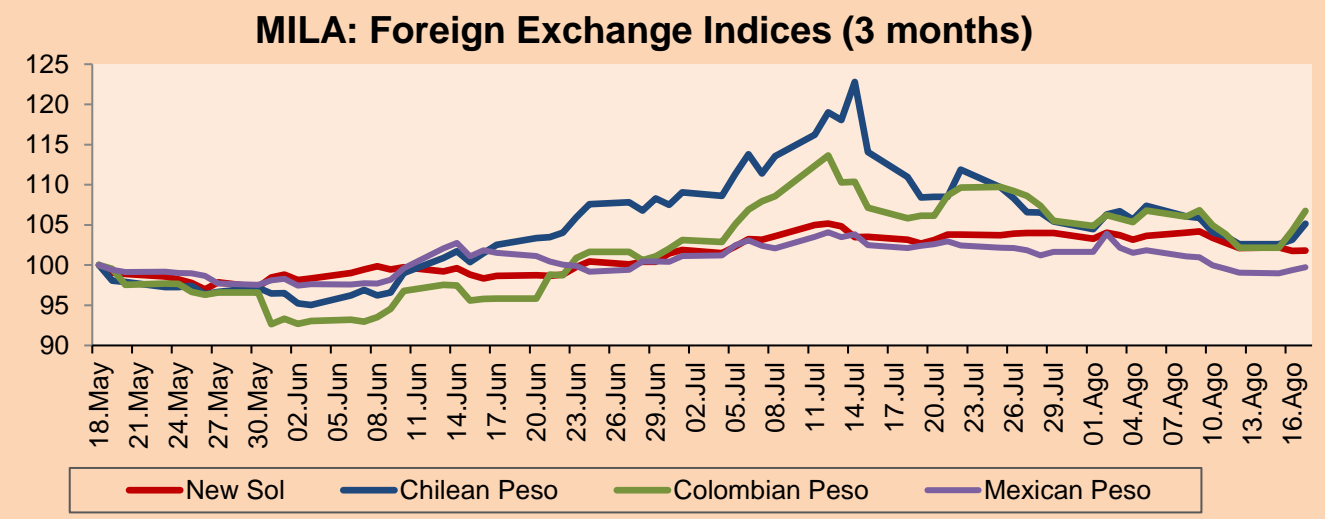
*Legend: Variation 1D: 1 day; 5D: 5 days; 1M: 1 Month; YTD: Var% 12/31/21 to date



Source: Bloomberg

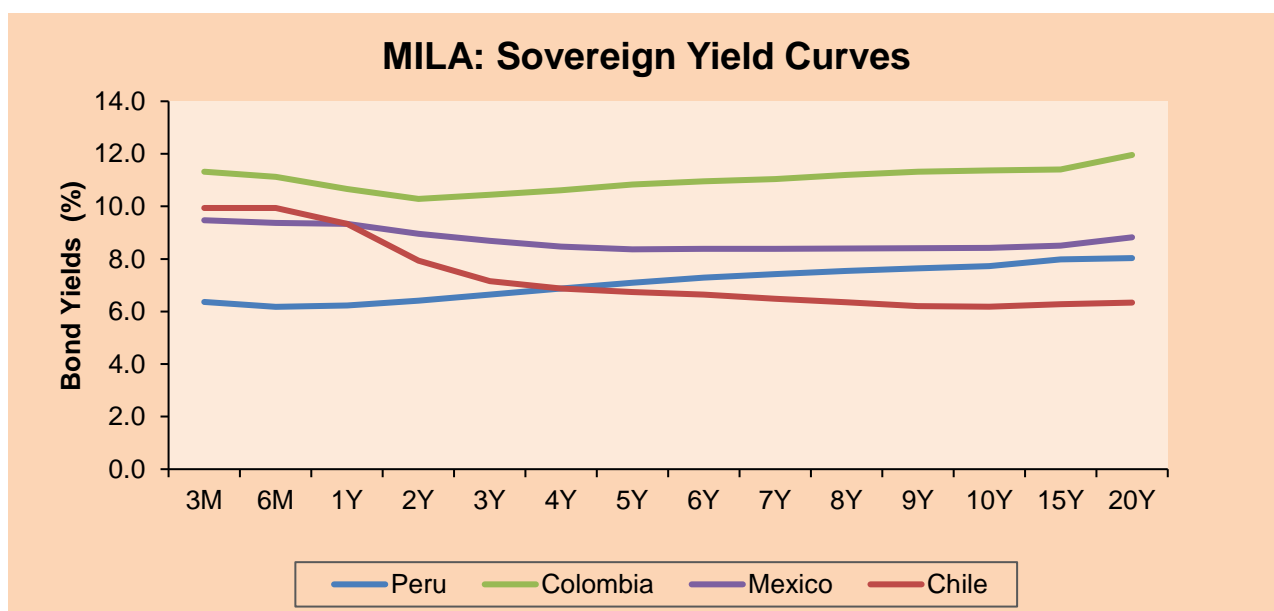
Currency	Price	1D*	5D*	30 D*	YTD*
▲ Sol (PEN)	3,838.4	0.01%	-1.58%	-1.34%	-4.02%
▲ Chilean Peso (CLP)	897.72	1.93%	1.03%	-5.25%	5.37%
▲ Colombian Peso (COP)	4,345.24	2.30%	1.69%	0.85%	6.49%
▲ Mexican Peso (MXN)	19.98	0.37%	-0.23%	-2.36%	-2.66%

*Legend: Variation 1D: 1 day; 5D: 5 days; 1M: 1 Month; YTD: Var% 12/31/21 to date



Base: 18/05/22=100
Source: Bloomberg

Fixed Income	Currency	Price	Bid Yield (%)	Ask Yield (%)	Duration
PERU 7.35 07/21/25	USD	108.352	4.36	4.19	2.63
PERU 4.125 08/25/27	USD	99.31	4.33	4.23	4.39
PERU 8.75 11/21/33	USD	130.478	5.19	5.10	7.58
PERU 6.55 03/14/37	USD	113.083	5.30	5.21	9.06
PERU 5.625 11/18/2050	USD	108.152	5.10	5.06	14.47
CHILE 2.25 10/30/22	USD	99.922	3.65	1.61	0.20
CHILE 3.125 01/21/26	USD	96.793	4.20	4.08	3.20
CHILE 3.625 10/30/42	USD	81.768	5.12	5.04	13.55
COLOM 11.85 03/09/28	USD	124.986	6.50	6.36	4.07
COLOM 10.375 01/28/33	USD	121.113	7.56	7.31	6.69
COLOM 7.375 09/18/37	USD	99.186	7.51	7.42	8.77
COLOM 6.125 01/18/41	USD	84.522	7.73	7.69	10.31
MEX 4 10/02/23	USD	84.522	7.73	7.694	10.31
MEX5.55 01/45	USD	95.543	5.94	5.89	12.60



Source: Bloomberg

Equity

Largest gains	Exchange	Currency	Price	▲%	Largest losses	Exchange	Currency	Price	▼%
CENCOSUD SHOPPIN	Chile	CLP	1074.40	3.82	INDUSTRIAS PENOL	Mexico	MXN	175.87	-6.73
ENGIE ENERGIA CH	Chile	CLP	460.01	3.56	VOLCAN CIA MIN-B	Peru	PEN	0.63	-5.97
SURAMERICANA	Colombia	COP	39900.00	2.94	BUENAVENTURA-ADF	Peru	USD	5.66	-5.67
CMPC	Chile	CLP	1734.00	2.91	GRUPO TELEV-CPO	Mexico	MXN	28.39	-4.28
AGUAS ANDINAS-A	Chile	CLP	194.91	2.58	ITAU CORPBANCA	Chile	CLP	1.952	-1.71

Per Turnover	Exchange	Amount (US\$)	Per Volume	Exchange	Volume
SOQUIMICH-B	Chile	66,852,705	ITAU CORPBANCA	Chile	578,361,654
CENCOSUD SA	Chile	45,868,545	ENEL CHILE SA	Chile	438,004,668
AMERICA MOVIL-L	Mexico	37,692,041	BANCO SANTANDER	Chile	287,410,957
GRUPO F BANORT-O	Mexico	27,076,117	BANCO DE CHILE	Chile	216,043,369
WALMART DE MEXIC	Mexico	22,054,928	ENEL AMERICAS SA	Chile	126,387,951

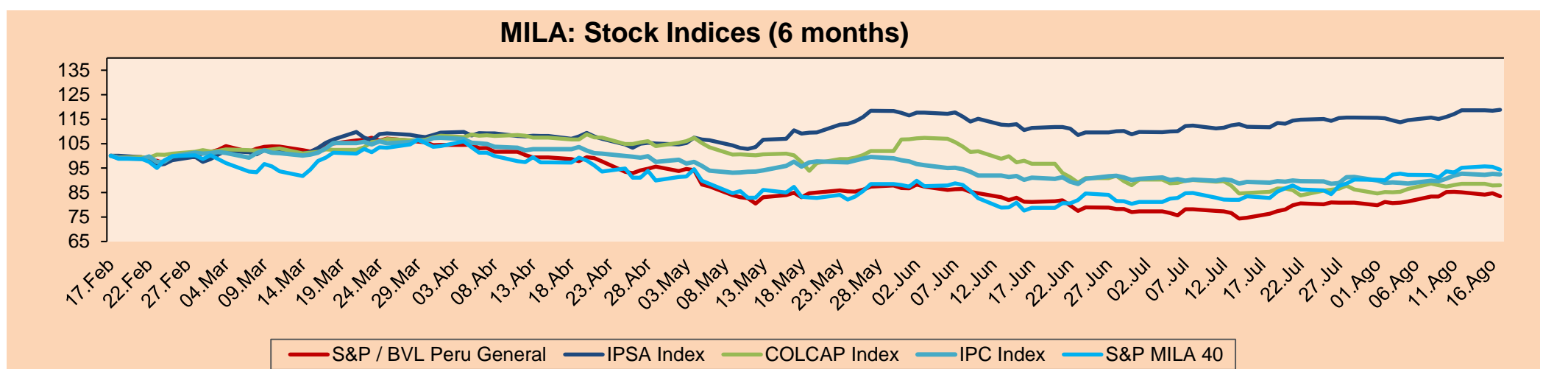
MILA

Peru: The BVL General index ended today's session with a negative -1.51%. The index maintains a negative annual cumulative trend of -5.67% in local currency, while the dollar-adjusted performance declined to -1.72%. Next, the S&P/BVL Peru SEL varied by -1.64% while the S&P/BVL LIMA 25 by -1.22%. The spot PEN reached S/3.8384. Headline: AFP fund withdrawals put Peru's accession to OECD at risk.

Chile: The IPSA index ended the day with a positive return of +0.34%. The sectors with the highest growth during the day were real estate (+3.34%) and communication services (+1.98%). The best performing stocks were Inversiones Agua Metropol (+5.31%) and Plaza SA and Subsidiaries (+4.51%). Headline: Food basket rises to historic levels in July and poverty line remains under pressure.

Colombia: The COLCAP index ended the session with a positive return of +0.14%. The sectors that benefited the most during the day were Energy (+0.87%) and Utilities (+0.64%). The best performing stocks were Grupo de Inversiones Suramericana (+2.94%) and Interconexion Electrica SA (+1.67%). Headline: Colombia's GDP growth exceeds that of China and the U.S.

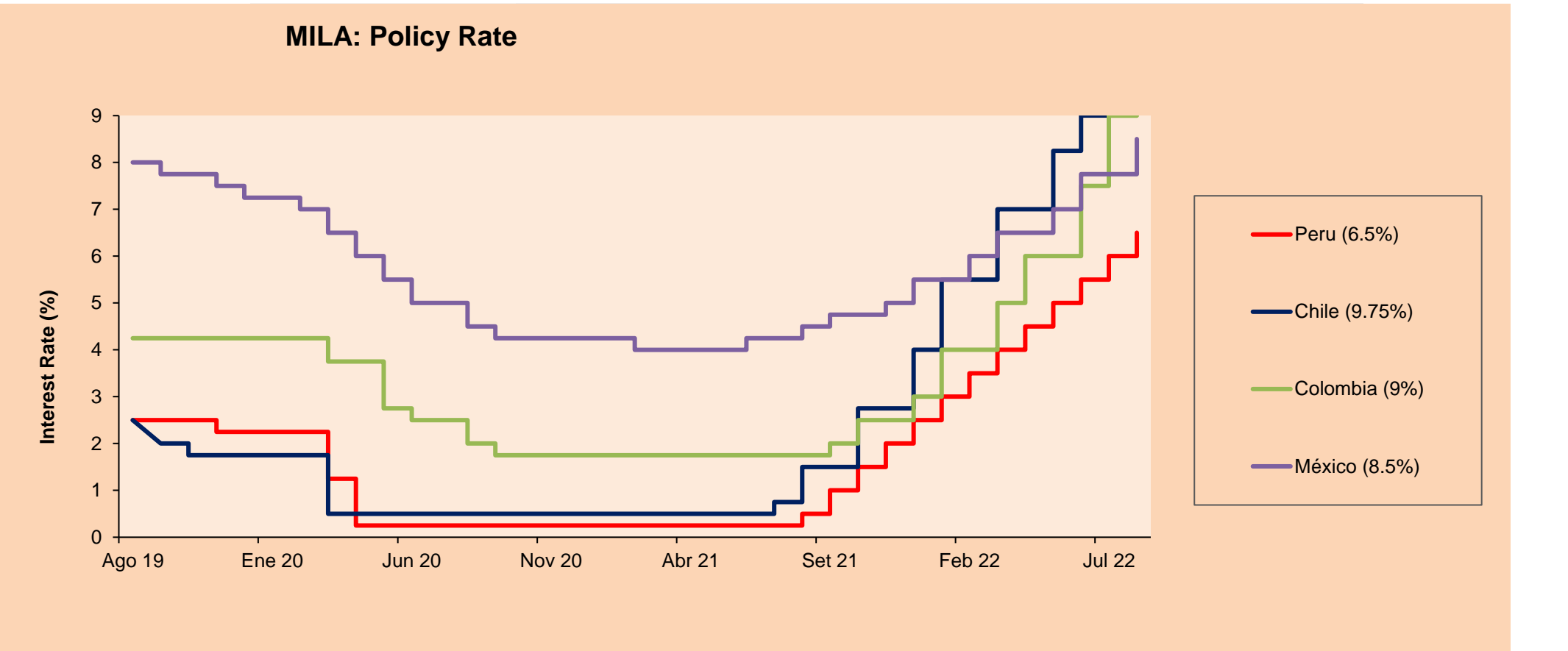
Mexico: The IPC index closed the day in negative territory at -0.14%. The worst performing sectors of the day were Real Estate (-1.87%) and Communication Services (-1.44%). The worst performing stocks were Industrias Penoles SAB (-6.73%) and Grupo Televisa SAB (-4.28%). Headline: Delay of permits for gas stations affects employment and the Mexican economy: specialists.



Base: 18/02/22=100
Source: Bloomberg

ETFs

ETFs	Curr.	Close	1D	5D	30 D	YTD	Exchange
▼ iShares MSCI All Peru Caped Index Fund	USD	26.6	-1.48%	-0.60%	8.93%	-10.20%	NYSE Arca
▼ iShares MSCI All Chile Caped Index Fund	USD	27.58	-1.36%	1.92%	13.08%	19.45%	Cboe BZX
▼ Global X MSCI Colombia	USD	9.14	-0.65%	1.44%	7.53%	-8.54%	NYSE Arca
▼ iShares MSCI Mexico Capped	USD	48.14	-0.64%	2.08%	5.66%	-4.86%	NYSE Arca
▼ iShares MSCI Emerging Markets	USD	40.68	-0.42%	0.54%	4.58%	-16.72%	NYSE Arca
▼ Vanguard FTSE Emerging Markets	USD	42.3	-0.24%	0.95%	4.96%	-14.48%	NYSE Arca
▼ iShares Core MSCI Emerging Markets	USD	50.01	-0.36%	0.62%	4.91%	-16.46%	NYSE Arca
▼ iShares JP Morgan Emerging Markets Bonds	USD	56.73	-0.07%	-0.02%	4.80%	-9.69%	Cboe BZX
▼ Morgan Stanley Emerging Markets Domestic	USD	4.52	-1.31%	-1.53%	6.60%	-17.52%	New York



Source: Bloomberg

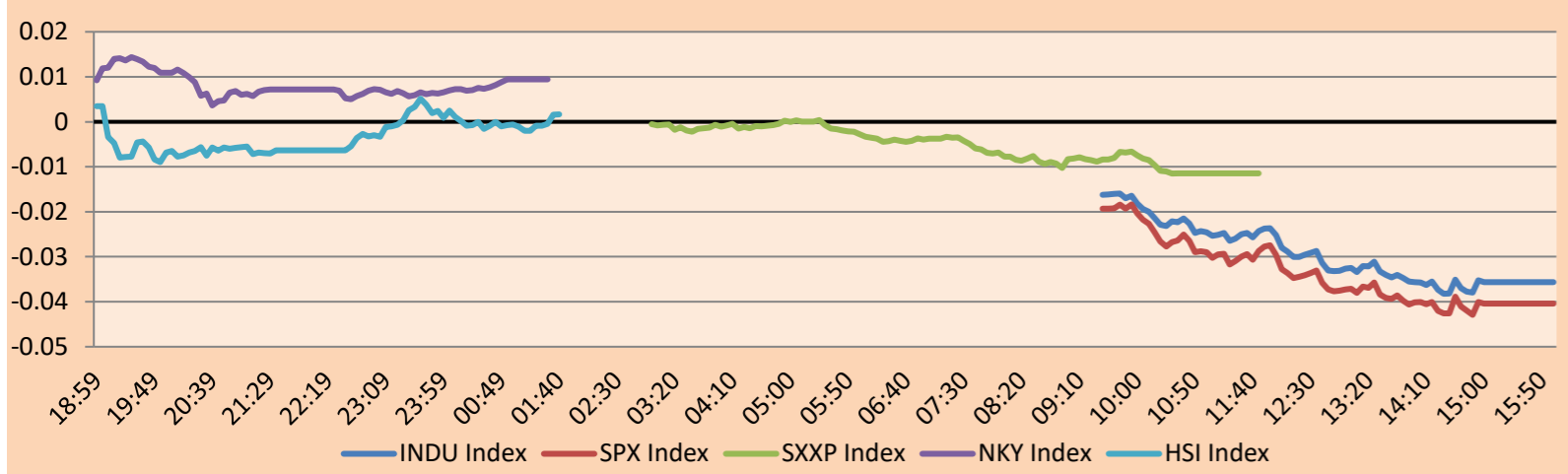
Capital Market Laboratory Coordinator: MS Javier Penny Pestana
Collaboration: Mariafe Urrutia, Fedele Calle, Miguel Solimano y Maciell Esquerre
email: pulsobursatil@ulima.edu.pe
facebook: www.facebook.com/pulsobursatil.ul

WORLD

Main Indices	Close	1 D*	5 D*	1 M*	YTD*	Market Cap. (US\$ Mill.)
▼ Dow Jones (USA)	33,980.32	-0.50%	2.01%	8.60%	-6.49%	10,873,484
▼ Standard & Poor's 500 (EEUU)	4,274.04	-0.72%	1.52%	10.64%	-10.33%	37,754,190
▼ NASDAQ Composite (USA)	12,938.12	-1.25%	0.65%	12.97%	-17.30%	22,195,346
▼ Stoxx EUROPE 600 (Europe)	439.03	-0.91%	-0.19%	6.10%	-10.00%	12,087,670
▼ DAX (Germany)	13,626.71	-2.04%	-0.54%	5.92%	-14.22%	1,429,734
▼ FTSE 100 (United Kingdom)	7,515.75	-0.27%	0.12%	4.98%	1.78%	1,723,856
▼ CAC 40 (France)	6,528.32	-0.97%	0.07%	8.16%	-8.73%	2,121,026
▼ IBEX 35 (Spain)	8,434.80	-0.91%	0.98%	6.15%	-3.20%	560,210
▼ MSCI AC Asia Pacific Index	162.73	-0.46%	1.62%	5.57%	-15.74%	21,948,795
▼ HANG SENG (Hong kong)	19,922.45	0.46%	1.59%	-4.43%	-14.85%	3,131,562
▲ SHANGHAI SE Comp. (China)	3,292.53	0.45%	1.94%	0.44%	-9.54%	6,711,924
▲ NIKKEI 225 (Japan)	29,222.77	1.23%	4.37%	9.09%	1.50%	3,591,345
▲ S&P / ASX 200 (Australia)	7,127.68	0.31%	1.93%	6.59%	-4.26%	1,655,843
▼ KOSPI (South Korea)	2,516.47	-0.67%	0.52%	5.95%	-15.49%	1,461,963

*Legend: Variation 1D: 1 Day; 5D: 5 Days; 1M: 1 Month; YTD: Var.% 12/31/21 to date

Mercado Evolución Intraday (var %)

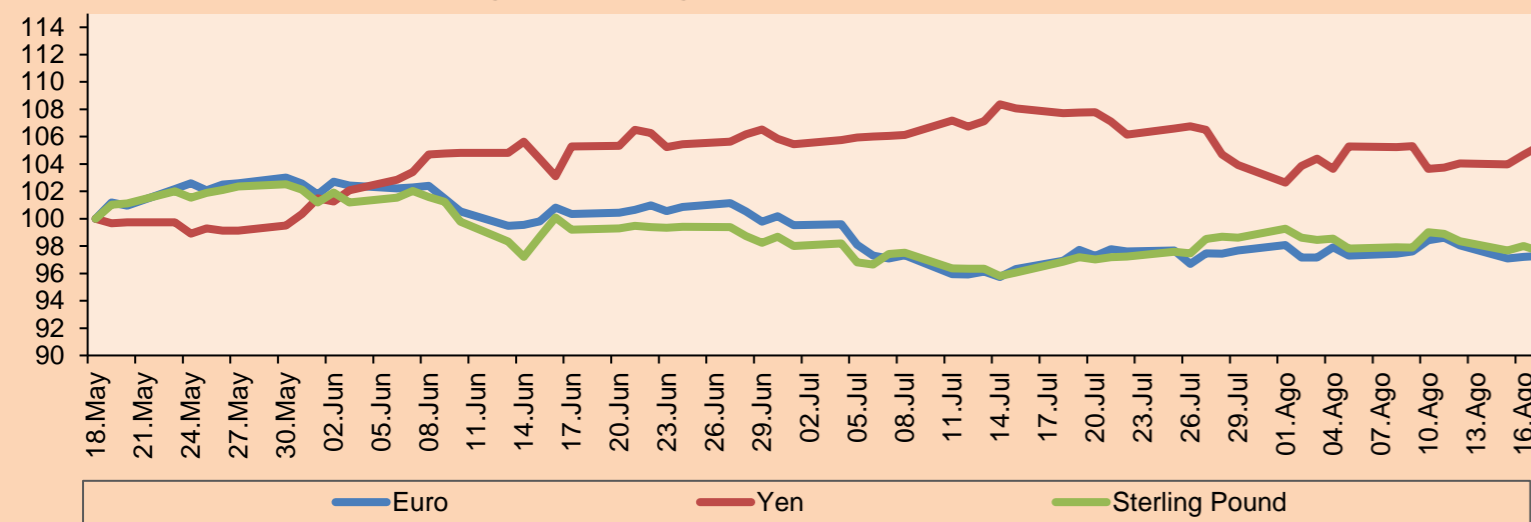


Source: Bloomberg

Currency	Price	1 D*	5 D*	1 M*	YTD*
▲ Euro	1.0180	0.09%	-1.16%	0.36%	-10.47%
▲ Yen	135.0500	0.62%	1.63%	-2.24%	17.35%
▼ Sterling Pound	1.2048	-0.40%	-1.40%	0.79%	-10.97%
▼ Yuan	6.7811	-0.10%	0.85%	0.56%	6.69%
▲ Hong Kong Dollar	7.8433	0.02%	-0.04%	-0.09%	0.60%
▲ Brazilian Real	5.1663	0.36%	1.41%	-4.98%	-7.34%
▲ Argentine Peso	135.5350	0.15%	1.14%	5.15%	31.93%

*Legend: Variation 1D: 1 Day; 5D: 5 Days; 1M: 1 Month; YTD: Var.% 12/31/21 to date

Foreign Exchange Indices (3 months)

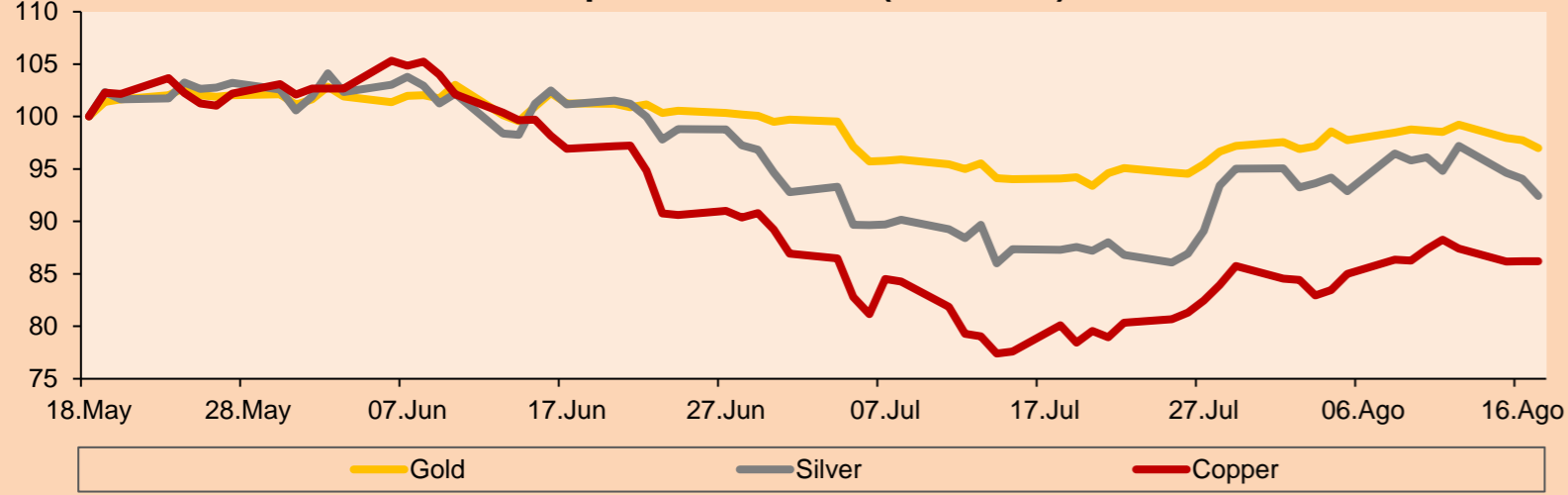


Base: 18/05/22=100
Source: Bloomberg

Commodities	Close	1 D*	5 D*	1 M*	YTD*
▼ Oro (US\$ Oz. T) (LME)	1,761.77	-0.78%	-1.71%	3.07%	-3.69%
▼ Plata (US\$ Oz. T) (LME)	19.80	-1.72%	-3.83%	5.90%	-15.05%
- Cobre (US\$ TM) (LME)	7,975.00	0.00%	-1.31%	7.61%	-18.13%
- Zinc (US\$ TM) (LME)	3,755.00	0.00%	1.32%	21.46%	4.60%
▲ Petróleo WTI (US\$ Barril) (NYM)	88.11	1.83%	-4.16%	-11.38%	23.13%
- Estaño (US\$ TM) (LME)	24,812.50	0.00%	0.43%	-0.46%	-36.98%
- Plomo (US\$ TM) (LME)	2,157.50	0.00%	-1.39%	7.07%	-7.71%
▲ Azúcar #11 (US\$ Libra) (NYB-ICE)	18.24	-0.16%	-0.22%	-6.03%	-0.65%
▲ Cacao (US\$ TM) (NYB-ICE)	2,421.00	2.15%	-0.70%	2.32%	-5.43%
▼ Café Arábica (US\$ TM) (NYB-ICE)	214.40	-0.88%	-0.58%	1.52%	-3.92%

*Leyenda: Variación 1D: 1 Día; 5D: 5 Días; 1M: 1 Mes; YTD: Var.% 31/12/21 a la fecha

Principal Metals Index (3 months)



Base: 18/05/22=100
Source: Bloomberg

Equity

Germany (Stocks from DAX Index)

Largest gains	Curr.	Price	▲%	Exchange	Largest losses	Curr.	Price	▼%	Exchange
DB1 GY	EUR	168.5	0.18	Xetra	IFX GY	EUR	26.02	-5.38	Xetra
BEI GY	EUR	102.55	-0.39	Xetra	1COV GY	EUR	31.23	-5.31	Xetra
MRK GY	EUR	182.9	-0.60	Xetra	CON GY	EUR	64	-4.79	Xetra
BNR GY	EUR	70.3	-1.01	Xetra	BAS GY	EUR	42.685	-4.61	Xetra

Europe (Stocks from STOXX EUROPE 600)

Largest gains	Curr.	Price	▲%	Exchange	Largest losses	Curr.	Price	▼%	Exchange
GLB ID	EUR	12.48	7.31	EN Dublin	EO FP	EUR	16.005	-8.36	EN Paris
COLOB DC	DKK	888.8	7.27	Copenhagen	PSN LN	GBp	1704	-7.84	Londres
CARLB DC	DKK	996.8	3.86	Copenhagen	ZAL GY	EUR	28.41	-7.61	Xetra
SDF GY	EUR	23.36	3.36	Xetra	HFG GY	EUR	28.22	-7.11	Xetra

Global Overview:

United States:

The US market closes with negative yields, where the release of the Fed minutes, weak Target results and higher bond yields weighed on market sentiment. The DOW JONES index closed in negative territory as the Fed minutes showed that rate hikes will continue until the institution considers that inflation has been controlled. However, the central bank indicated that it may slow the pace of tightening, while acknowledging the state of the economy and the downside risk to GDP growth. The S&P500 index ended with a negative performance as Target reported a 90% drop in quarterly earnings, more than expected, and missed comparable sales estimates. It struggled to attract inflation-hit shoppers with discounts on apparel, electronics and home goods. Finally, the NASDAQ index closed with negative performance as bond yields rose, with the 10-year Treasury note up about 7 basis points to 2.9% as recession fears and uncertainty about the Fed's rate hike path persisted. The move dragged down growth stocks, such as technology stocks. Thus, DOW JONES -0.50%; S&P 500 -0.72%; NASDAQ -1.25% ended the day with negative results.

Europe:

The main European indices ended the session with negative yields due to the European Central Bank's decision to increase the interest rate by 50 basis points in September. However, this decision would have a more severe impact due to the energy crisis caused by a shortage of supply from Russia. The pan-European STOXX 600 index ended with losses mainly due to losses on retail stocks (-2.6%). Meanwhile, food and beverage stocks held up, closing with gains (+0.5%). The British market, reflected in the FTSE 100, ended with losses after the publication of an increase in inflation, which reached 10.1% in July. The sectors that suffered the most in this session were: Real Estate (-2.23%) and Non-Core Consumer Products (-1.42%). Similarly, the German market, reflected in the DAX index closed in negative territory, due to consumer concerns about natural gas shortages. According to Mueller, the country's energy regulator, supplying 95% of inventories would only be enough for 2 and a half months of demand, in the event that Russia suspends its exports. The French market declined this session, in view of the fact that Sanofi, a pharmaceutical company, has ceased the development of Amcenestrant, which is a potential treatment for breast cancer with high expectations worldwide. This led to a -6.7% decline in its shares. Thus, FTSE 100 -0.27%; CAC 40 -0.97%; DAX -2.04%; STOXX 600 -0.91% ended at negative levels.

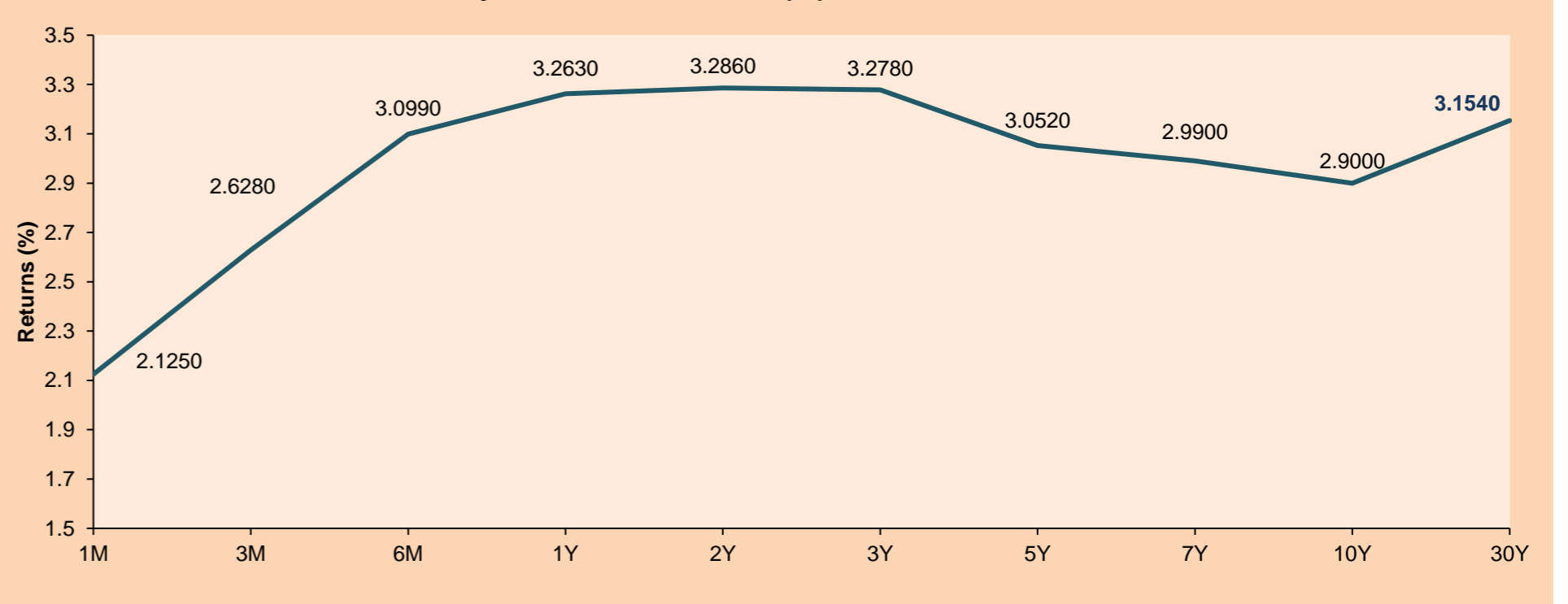
Asia:

The main Asian indices ended the session mostly positive, following a rebound in the US stock market. The Chinese market, represented by the CSI 300 index, closed higher. Mainly due to strong gains in high-growth technology and new energy stocks led the way. The Hang Seng index, meanwhile, ended with positive returns in view of the Chinese Prime Minister's announcement of support for the macroeconomic policy and the decrease in the interest rate by the central bank of China. The Japanese market posted positive returns reaching its highest levels in seven months after a night of gains on Wall Street, where Japanese stocks made significant gains, boosted by upbeat results from major U.S. retailers. Tokyo Electric Power also jumped as much as 6.5% on expectations of a restart of nuclear power plants. The Australian market finished higher after average wages missed estimates for the BRA to slow the pace of rates. In addition, gains were recorded on Wall Street with notable earnings. However, energy stocks fell 0.6% as did giant CSL by 1.3%. The South Korean market closed the session lower on a plunge in automakers' shares after Joe Biden signed legislation indicating tax credit cuts for electric vehicles assembled outside North America. Thus, NIKKEI +1.23%; HANG SENG +0.46%; CSI 300 +0.94%; S&P/ASX 200 +0.31%; KOSPI -0.67%; SHANGAI COMPOSITE +0.45% ended with positive performances.

ETFs

	Curr.	Close	1D	5D	30 D	YTD	Exchange
SPDR S&P 500 ETF TRUST	USD	426.65	-0.71%	1.59%	11.70%	-10.17%	NYSE Arca
ISHARES MSCI EMERGING MARKET	USD	40.68	-0.42%	0.54%	4.58%	-16.72%	NYSE Arca
ISHARES IBOXX HIGH YLD CORP	USD	77.62	-1.03%	-1.36%	3.81%	-10.79%	NYSE Arca
FINANCIAL SELECT SECTOR SPDR	USD	35.63	-0.50%	2.98%	12.54%	-8.76%	NYSE Arca
VANECK GOLD MINERS ETF	USD	25.78	-3.55%	-4.98%	0.27%	-19.51%	NYSE Arca
ISHARES RUSSELL 2000 ETF	USD	197.61	-1.68%	1.02%	14.49%	-11.17%	NYSE Arca
SPDR GOLD SHARES	USD	164.35	-0.65%	-1.46%	3.26%	-3.87%	NYSE Arca
ISHARES 20+ YEAR TREASURY BO	USD	114.72	-1.04%	-2.05%	-0.18%	-22.59%	NASDAQ GM
INVESTCO QQQ TRUST SERIES 1	USD	328.49	-1.14%	0.79%	13.51%	-17.43%	NASDAQ GM
ISHARES BIOTECHNOLOGY ETF	USD	130.40	-1.95%	-1.98%	8.20%	-14.56%	NASDAQ GM
ENERGY SELECT SECTOR SPDR	USD	77.40	0.83%	2.80%	10.32%	39.46%	NYSE Arca
PROSHARES ULTRA VIX ST FUTUR	USD	8.94	-0.45%	-2.51%	-30.91%	-28.08%	Cboe BZX
UNITED STATES OIL FUND LP	USD	72.05	1.14%	-3.05%	-6.20%	32.54%	NYSE Arca
ISHARES MSCI BRAZIL ETF	USD	31.77	-0.41%	1.15%	22.38%	13.18%	NYSE Arca
SPDR S&P OIL & GAS EXP & PR	USD	138.60	1.43%	3.98%	16.14%	44.57%	NYSE Arca
UTILITIES SELECT SECTOR SPDR	USD	77.45	-0.17%	2.58%	12.59%	8.20%	NYSE Arca
ISHARES US REAL ESTATE ETF	USD	102.38	-0.42%	0.95%	11.44%	-11.85%	NYSE Arca
SPDR S&P BIOTECH ETF	USD	89.57	-3.05%	-4.46%	12.33%	-20.00%	NYSE Arca
ISHARES IBOXX INVESTMENT GRA	USD	112.65	-0.94%	-1.21%	1.44%	-14.99%	NYSE Arca
ISHARES JP MORGAN USD EMERGI	USD	88.24	-1.10%	-1.80%	6.65%	-19.09%	NASDAQ GM
REAL ESTATE SELECT SECT SPDR	USD	45.43	-0.29%	0.98%	11.90%	-12.31%	NYSE Arca
ISHARES CHINA LARGE-CAP ETF	USD	29.67	-0.20%	0.47%	-6.20%	-18.89%	NYSE Arca
CONSUMER STAPLES SPDR	USD	76.90	-0.29%	2.48%	6.47%	-0.27%	NYSE Arca
VANECK JUNIOR GOLD MINERS	USD	32.08	-4.52%	-6.72%	5.60%	-23.49%	NYSE Arca
SPDR BLOOMBERG HIGH YIELD BO	USD	96.00	-1.04%	-1.19%	4.34%	-11.58%	NYSE Arca
VANGUARD REAL ESTATE ETF	USD	101.25	-0.60%	1.01%	11.09%	-12.72%	NYSE Arca
GRAYSCALE BITCOIN TRUST BTC	USD	14.37	-3.82%	-3.94%	2.06%	-58.04%	OTC US

USA Treasury Bonds Yield Curve (%)



Source: Bloomberg

LIMA

Stocks

Ticker	Currency	Price	1D*	5D*	30D*	YTD*	Frequency	Volume (US\$)	Beta	Dividend Yield (%)	Price Earning	Market Cap. (M US\$)	Economic Sector*	Index Weight
▼ ALICORC1 PE**	S/.	6.05	-0.52%	0.54%	4.00%	-8.79%	100.00%	70,452	0.84	13.80	10.22	1,342.99	Industrial	3.53%
- ATACOB1 PE**	S/.	0.09	0.00%	0.00%	0.00%	-25.00%	16.67%	3	#N/A N/A	0.00	-	22.96	Mining	1.02%
▼ BACKUS1 PE**	S/.	20.50	-6.56%	-6.39%	2.50%	0.00%	61.11%	2,588	0.79	16.73	6.38	7,326.07	Industrial	0.82%
▼ BAP PE**	US\$	137.10	-0.70%	-3.01%	13.78%	10.76%	100.00%	187,966	1.26	2.92	-	10,902.19	Diverse	5.82%
▼ BVN PE**	US\$	5.66	-5.67%	-3.41%	-6.91%	-22.47%	100.00%	250,273	1.38	1.24	-	1,560.09	Mining	5.88%
▼ CASAGRC1 PE**	S/.	8.86	-0.45%	-2.10%	10.75%	-2.64%	88.89%	14,307	1.26	60.97	5.87	194.43	Agricultural	1.31%
- BBVAC1 PE**	S/.	1.55	0.00%	-0.64%	6.16%	-6.63%	77.78%	97,407	0.76	6.81	5.77	2,981.03	Finance	2.85%
- CORARE1 PE**	S/.	1.40	0.00%	-2.78%	6.06%	-18.60%	100.00%	17,720	0.86	13.32	2.83	509.82	Industrial	1.72%
- CPACASC1 PE**	S/.	4.10	0.00%	2.50%	13.89%	-17.17%	88.89%	6,678	0.79	0.00	11.39	488.43	Industrial	2.38%
- CVERDEC1 PE**	US\$	29.00	0.00%	7.41%	11.54%	-22.11%	94.44%	14,297	0.89	6.40	8.58	10,151.62	Mining	5.25%
- ENGEPEC1 PE**	S/.	2.54	0.00%	-2.31%	11.40%	-10.56%	94.44%	12,999	0.82	25.01	6.14	1,156.61	Public Services	1.44%
- ENDISPC1**	S/.	4.06	0.00%	1.50%	11.23%	1.50%	50.00%	3,755	0.85	5.10	6.66	675.43	Public Services	0.98%
▼ FERREYC1 PE**	S/.	2.18	-0.91%	1.87%	15.96%	6.34%	100.00%	5,789	0.87	10.94	4.40	537.31	Diverse	4.90%
- AENZAC1 PE**	S/.	0.95	0.00%	5.56%	11.76%	-30.66%	61.11%	61	0.99	0.00	-	296.25	Diverse	4.05%
▼ IFS PE**	US\$	24.40	-2.20%	-1.45%	6.09%	-9.12%	77.78%	77,640	0.90	9.84	7.40	2,816.20	Diverse	7.22%
▲ INRETC1 PE**	US\$	34.00	2.41%	6.08%	42.86%	-2.72%	94.44%	3,895,895	0.90	4.03	21.48	3,697.39	Diverse	5.28%
- LUSURC1 PE**	S/.	15.50	0.00%	-2.21%	-0.64%	8.85%	44.44%	1,066	0.00	0.00	12.70	1,966.38	Public Services	1.81%
- MINSUR1 PE**	S/.	4.05	0.00%	-3.57%	15.71%	2.53%	94.44%	9,703	1.11	10.82	1.43	3,041.93	Mining	3.09%
- PML PE**	US\$	0.09	0.00%	0.00%	0.00%	-25.00%	11.11%	12,539	1.10	0.00	-	23.79	Mining	2.12%
▼ SCCO PE**	US\$	48.07	-1.68%	-1.03%	-0.27%	-22.19%	88.89%	63,105	1.06	8.32	11.75	37,162.55	Industrial	2.12%
▼ SIDERC1 PE**	S/.	1.62	-1.82%	1.89%	19.12%	1.25%	100.00%	2,003	0.81	38.70	3.92	295.44	Mining	2.14%
▼ TV PE**	US\$	0.17	-15.00%	-57.50%	-51.43%	-86.92%	72.22%	39,318	1.18	0.00	-	16.33	Industrial	1.43%
- UNACEMC1 PE**	S/.	1.68	0.00%	-6.67%	3.07%	-30.00%	88.89%	4,530	1.01	0.00	-	795.76	Mining	2.93%
▼ VOLCABC1 PE**	S/.	0.63	-5.97%	-7.35%	23.53%	5.00%	100.00%	67,943	1.24	0.00	13.12	1,609.55	Industrial	3.00%
▲ BROCALC1 PE**	S/.	4.65	3.10%	3.10%	0.00%	-10.58%	16.67%	4,109	0.00	0.57	34.02	196.86	Mining	5.90%
- RIMSEGC1 PE**	S/.	0.80	0.00%	0.00%	0.00%	-6.98%	5.56%	813	0.00	0.00	11.82	344.27	Finance	3.09%
- CORAREC1 PE**	US\$	1.91	0.00%	-1.04%	-4.98%	0.53%	33.33%	68,760	0.00	0.00	3.86	1,956.91	Mining	2.12%
- ENGIEC1 PE**	S/.	5.55	0.00%	0.00%	2.78%	-5.29%	27.78%	77	0.54	0.00	17.64	869.53	Diversas	2.12%
- GBVLAC1 PE**	S/.	2.50	0.00%	0.00%	0.40%	-8.09%	38.89%	98	0.00	0.00	-	118.60	Diversas	2.14%

Quantity of shares: 29
Source: Bloomberg, Economática
* Bloomberg Industry Classification System
** PER is used in the stock market and original currency of the instrument

Up 2
Down 11
Hold 16

*Legend: Variation 1D: 1 Day; 5D: 5 Days; 1M: 1 Month; YTD: Var.% 12/31/21 to date

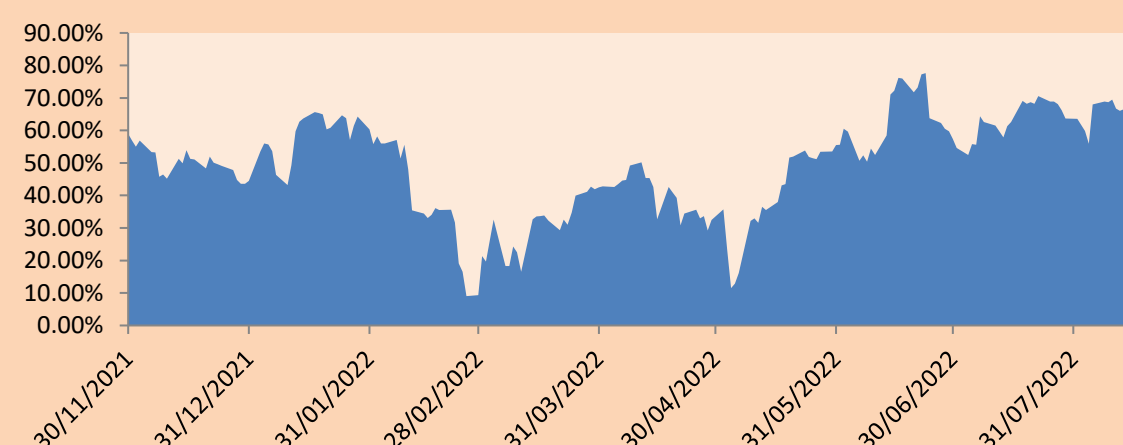
Sectorial Indices

	Close	1D*	5D*	30D*	YTD*	Beta
▼ S&P/BVLMining	325.62	-2.72%	-2.74%	0.91%	-20.89%	1.13
▼ S&P/BVLConsumer	1,174.49	-0.23%	1.11%	24.99%	2.31%	0.66
▼ S&P/BVLIndustrials	231.76	-0.30%	-0.03%	9.03%	-10.19%	0.70
▼ S&P/BVLFinancials	975.63	-1.17%	-4.17%	10.89%	7.67%	1.27
- S&P/BVLConstruction	231.98	0.00%	-0.89%	6.06%	-18.14%	0.66
- S&P/BVLPublicSvcs	623.69	0.00%	0.83%	8.68%	13.71%	0.16
- S&P/BVLElectricUtil	608.88	0.00%	0.83%	8.68%	13.71%	0.16

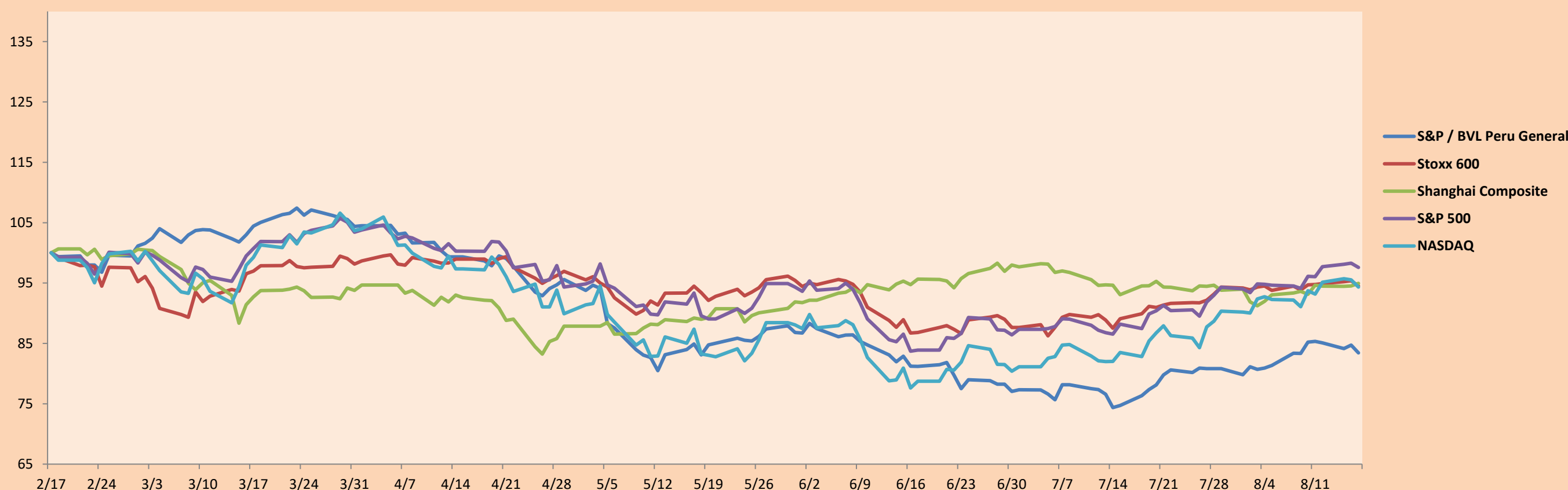
S&P/BVLConstructionTRPEN

*Legend: Variation 1D: 1 Day; 5D: 5 Days; 1M: 1 Month; YTD: Var.% 12/31/21 to date

Correlation Graph of Returns of Mining Index against Metallic Index of London (3 months)



Indices (6 months)



Base: 17/02/22=100
Source: Bloomberg

Capital Market Laboratory Coordinator: MS Javier Penny Pestana
Collaboration: Mariafe Urrutia, Fedele Calle, Miguel Solimano y Maciell Esquerre
email: pulsobursatil@ulima.edu.pe
facebook: www.facebook.com/pulsobursatil.ul

SOVEREIGN RATING

RISK RATINGS

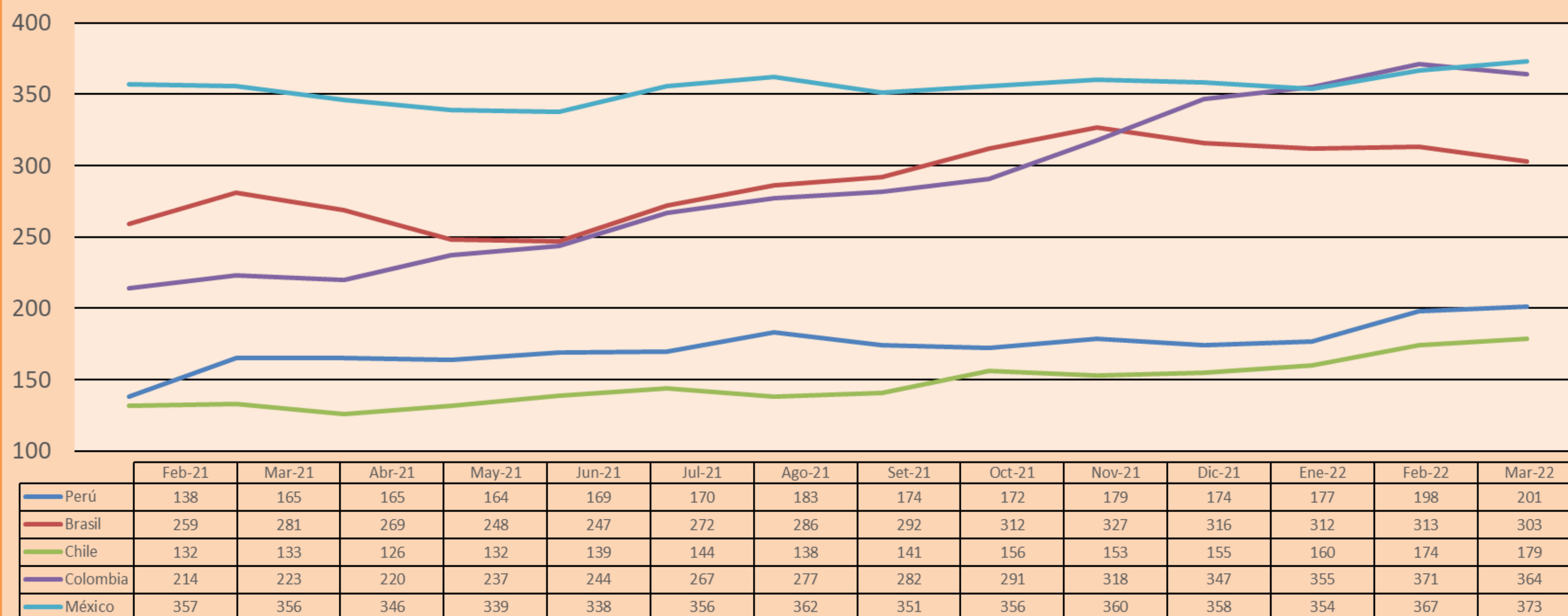
Moody's	S&P	Fitch	
Aaa	AAA	AAA	Prime
Aa1	AA+	AA+	High credit quality
Aa2	AA	AA	
Aa3	AA-	AA-	
A1	A+	A+	Medium-high grade, with low credit risk
A2	A	A	
A3	A-	A-	
Baa1	BBB+	BBB+	Moderate Credit Risk
Baa2	BBB	BBB	
Baa3	BBB-	BBB-	
Ba1	BB+	BB+	It has speculative elements and it is subject to substantial credit risk
Ba2	BB	BB	
Ba3	BB-	BB-	
B1	B+	B+	It is considered speculative and it has high credit risk
B2	B	B	
B3	B-	B-	
Caa1	CCC+	CCC	
Caa2	CCC		
Caa3	CCC-		
Ca	CC		
	C	DDD	
C	D	DD	Very close to default or in default
		D	

Source: Bloomberg

Latin America Credit Rating			
Clasificadora de riesgo			
Country	Moody's	Fitch	S&P
Peru	Baa1	BBB	BBB
México	Ba2	BB-	BB-
Venezuela	C	WD	NR
Brazil	Ba2	BB-	BB-
Colombia	Baa2	BB+	BB+
Chile	A1	A-	A
Argentine	Ca	WD	CCC+
Panama	Baa2	BBB-	BBB

Source: Bloomberg

LATAM Country Risk(bps)



Source: BCRP

Capital Market Laboratory Coordinator: MS Javier Penny Pestana
Collaboration: Mariafe Urrutia, Fedele Calle, Miguel Solimano y Maciell Esquerre
email: pulsobursatil@ulima.edu.pe
facebook: www.facebook.com/pulsobursatil.ul