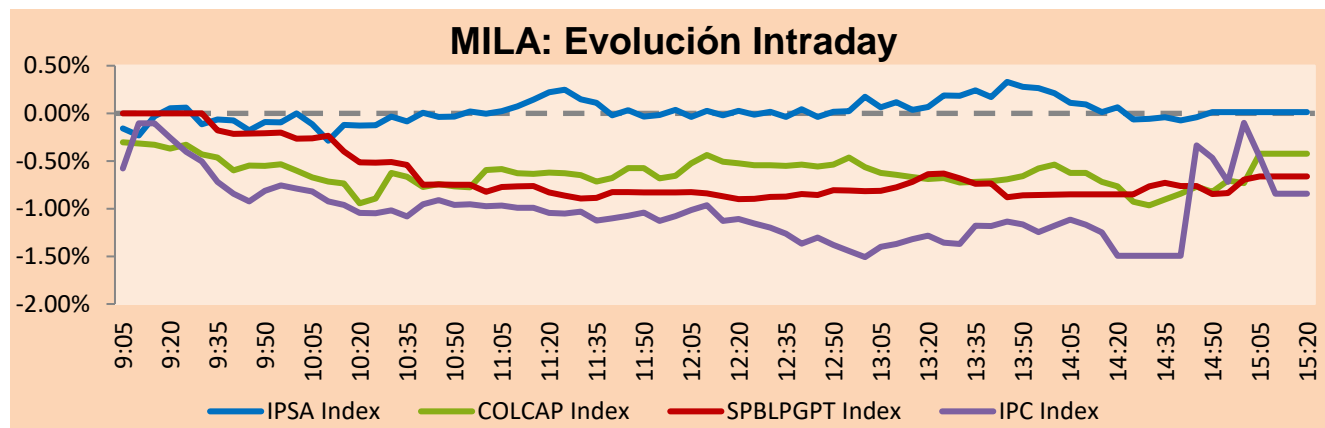


MILA

Lima, August 26, 2022

Main Indexes	Close	1 D	5 D	1 M	YTD	Cap. Burs. (US\$ bill)
▲ IPSA (Chile)	5,461.80	0.02%	3.19%	5.03%	26.77%	106.09
▼ IGPA (Chile)	29,185.40	-0.03%	4.33%	5.49%	35.33%	122.51
▼ COLSC (Colombia)	870.87	-1.00%	-1.33%	1.10%	-10.51%	3.54
▼ COLCAP (Colombia)	1,298.84	-0.42%	-0.68%	0.31%	-7.95%	62.30
▼ S&P/BVL (Perú)*	19,441.92	-0.66%	-1.15%	0.65%	-7.91%	83.75
▼ S&P/BVL SEL (Perú)	508.31	-1.05%	-1.89%	0.90%	-9.80%	75.06
▼ S&P/BVL LIMA 25	27,917.07	-0.53%	-2.76%	1.99%	-7.79%	82.99
▼ IPC (México)	47,272.11	-0.95%	-2.46%	1.28%	-11.26%	302.26
▲ S&P MILA 40	458.86	2.30%	2.75%	5.15%	3.15%	6,057.39

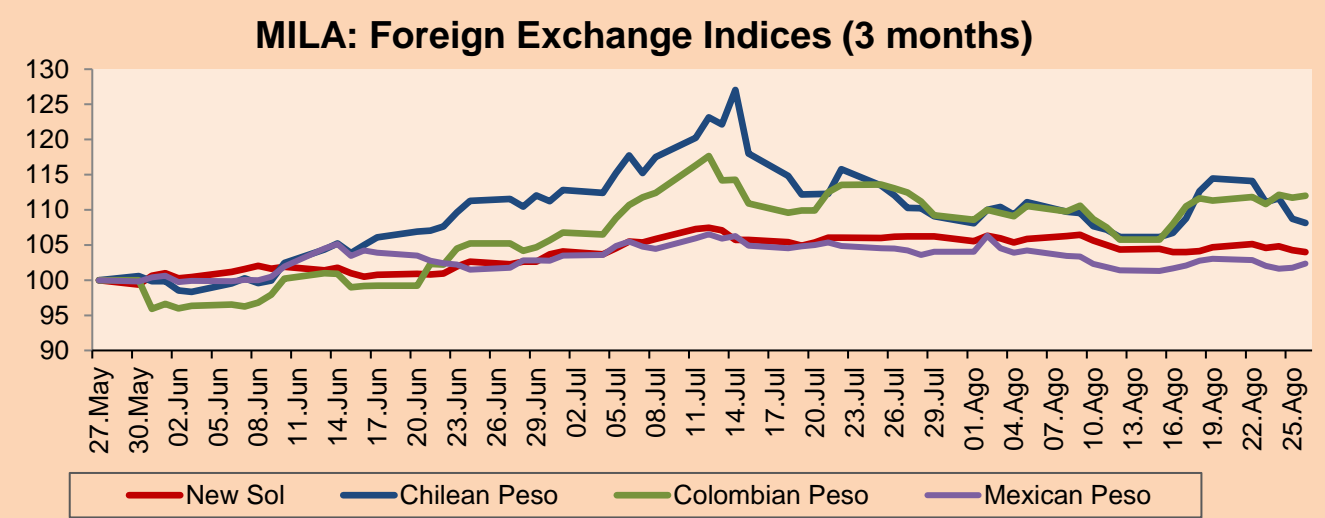
*Legend: Variation 1D: 1 day; 5D: 5 days; 1M: 1 Month; YTD: Var% 12/31/21 to date



Source: Bloomberg

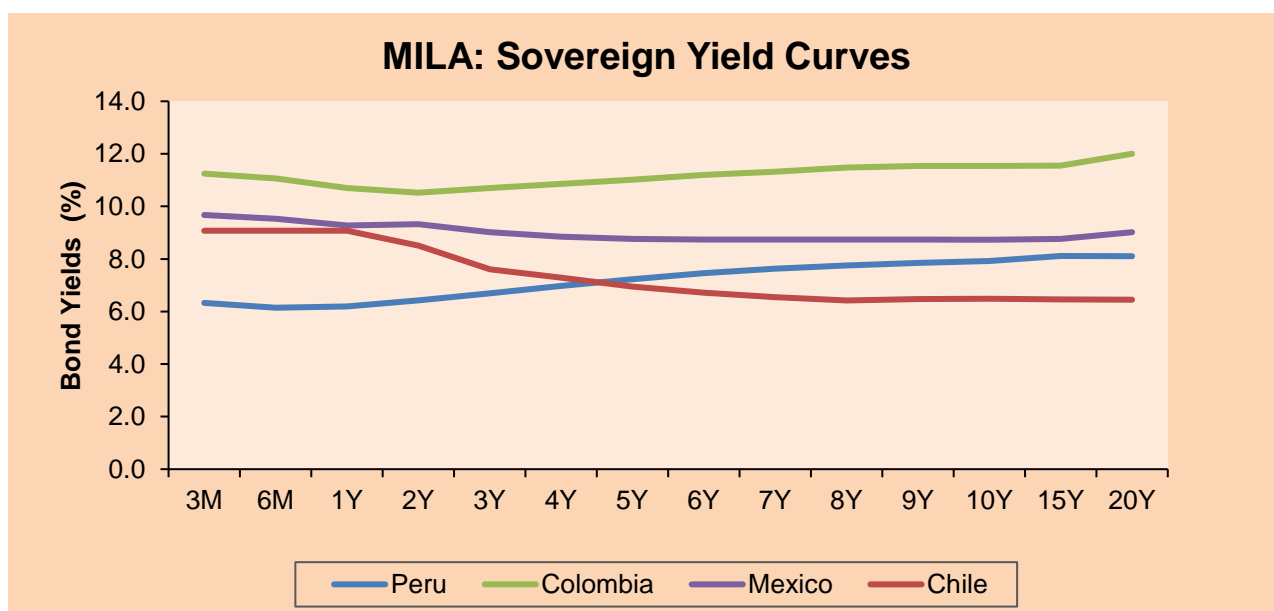
Currency	Price	1D*	5D*	30 D*	YTD*
▼ Sol (PEN)	3.8392	-0.27%	-0.65%	-2.11%	-4.00%
▼ Chilean Peso (CLP)	892.45	-0.53%	-5.54%	-1.93%	4.75%
▲ Colombian Peso (COP)	4,403.95	0.25%	0.61%	-0.41%	7.93%
▲ Mexican Peso (MXN)	20.04	0.56%	-0.66%	-1.80%	-2.38%

*Legend: Variation 1D: 1 day; 5D: 5 days; 1M: 1 Month; YTD: Var% 12/31/21 to date



Base: 27/05/22=100
Source: Bloomberg

Fixed Income	Currency	Price	Bid Yield (%)	Ask Yield (%)	Duration
PERU 7.35 07/21/25	USD	108.111	4.44	4.23	2.60
PERU 4.125 08/25/27	USD	99.278	4.33	4.25	4.45
PERU 8.75 11/21/33	USD	130.508	5.19	5.08	7.55
PERU 6.55 03/14/37	USD	111.579	5.43	5.35	8.98
PERU 5.625 11/18/2050	USD	106.401	5.22	5.16	14.25
CHILE 2.25 10/30/22	USD	100.03	2.89	1.22	0.16
CHILE 3.125 01/21/26	USD	96.364	4.35	4.22	3.17
CHILE 3.625 10/30/42	USD	79.765	5.30	5.23	13.35
COLOM 11.85 03/09/28	USD	123.892	6.68	6.55	4.03
COLOM 10.375 01/28/33	USD	119.271	7.77	7.54	6.63
COLOM 7.375 09/18/37	USD	98.156	7.64	7.53	8.69
COLOM 6.125 01/18/41	USD	82.912	7.95	7.86	10.15
MEX 4 10/02/23	USD	82.912	7.946	7.859	10.15
MEX5.55 01/45	USD	95.348	5.96	5.90	12.49



Source: Bloomberg

Equity

Largest gains	Exchange	Currency	Price	▲%	Largest losses	Exchange	Currency	Price	▼%
ITAU CORPBANCA	Chile	CLP	1.97	4.12	GRUPO AVAL SA-PF	Colombia	COP	673	-3.86
ENTEL	Chile	CLP	2754.40	3.94	CEMEX SAB-CPO	Mexico	MXN	8.09	-3.35
BANCO CRED INVER	Chile	CLP	28090.00	1.41	VOLCAN CIA MIN-B	Peru	PEN	0.58	-3.33
FERREYCORP SAA	Peru	PEN	2.20	1.38	BUENAVENTURA-ADF	Peru	USD	5.53	-2.47
AGUAS ANDINAS-A	Chile	CLP	205.61	1.38	CAP	Chile	CLP	7610	-2.44

Per Turnover	Exchange	Amount (US\$)	Per Volume	Exchange	Volume
SOQUIMICH-B	Chile	42,670,402	ITAU CORPBANCA	Chile	2,298,659,545
GRUPO F BANORT-O	Mexico	32,151,264	BANCO DE CHILE	Chile	311,447,469
WALMART DE MEXIC	Mexico	31,639,036	BANCO SANTANDER	Chile	300,744,614
BANCO DE CHILE	Chile	30,167,953	ENEL CHILE SA	Chile	105,796,623
AERO DEL PACIF-B	Mexico	29,146,473	AMERICA MOVIL-L	Mexico	30,678,081

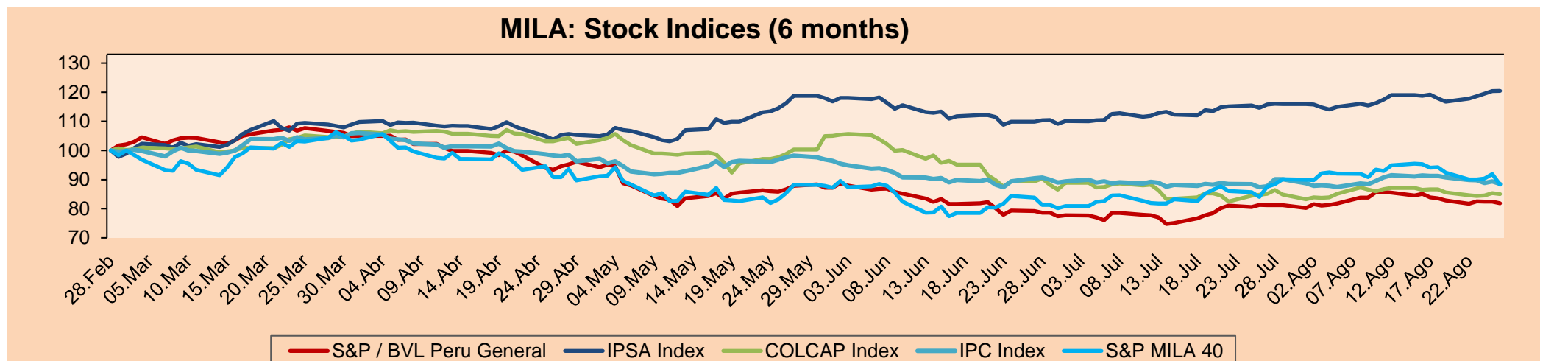
MILA

Peru: The BVL General index ended today's session with a negative result of -0.66%. The index maintains a negative annual cumulative trend of +15.08% in local currency, while the dollar-adjusted performance amounted to +22.31%. Next, the S&P/BVL Peru SEL varied -0.53% while the S&P/BVL LIMA 25 varied -0.83%. The PEN spot reached S/3.8392. Headline: Exchange rate closes lower after Powell's speech.

Chile: The IPSA index ended the day with a positive return of +0.04%. The most benefited sectors of the session were Communication Services (+3.94%), Non Basic Consumer Products (+0.96%), and Financials (+0.85%). The best performing stocks were Soc Quimica y Minera Chile with +4.12% and Empresa Nacional de Telecom with +3.94%. Headline: Inflation takes its toll on the most vulnerable households: income is enough to buy fewer food baskets than a year ago.

Colombia: The COLCAP index ended the session with a negative return of -0.42%. The least benefited sectors of the day were Energy (-1.66%) and Materials with (-0.23%). The lowest performing stocks were Bolsa de Valores de Colombia with -5.41% and Grupo Aval Acciones SA (-3.86%). In contrast, the best performing shares were those of Mineros SA with a return of 3.98%. Headline: Tax proposal for gold exports will be eliminated.

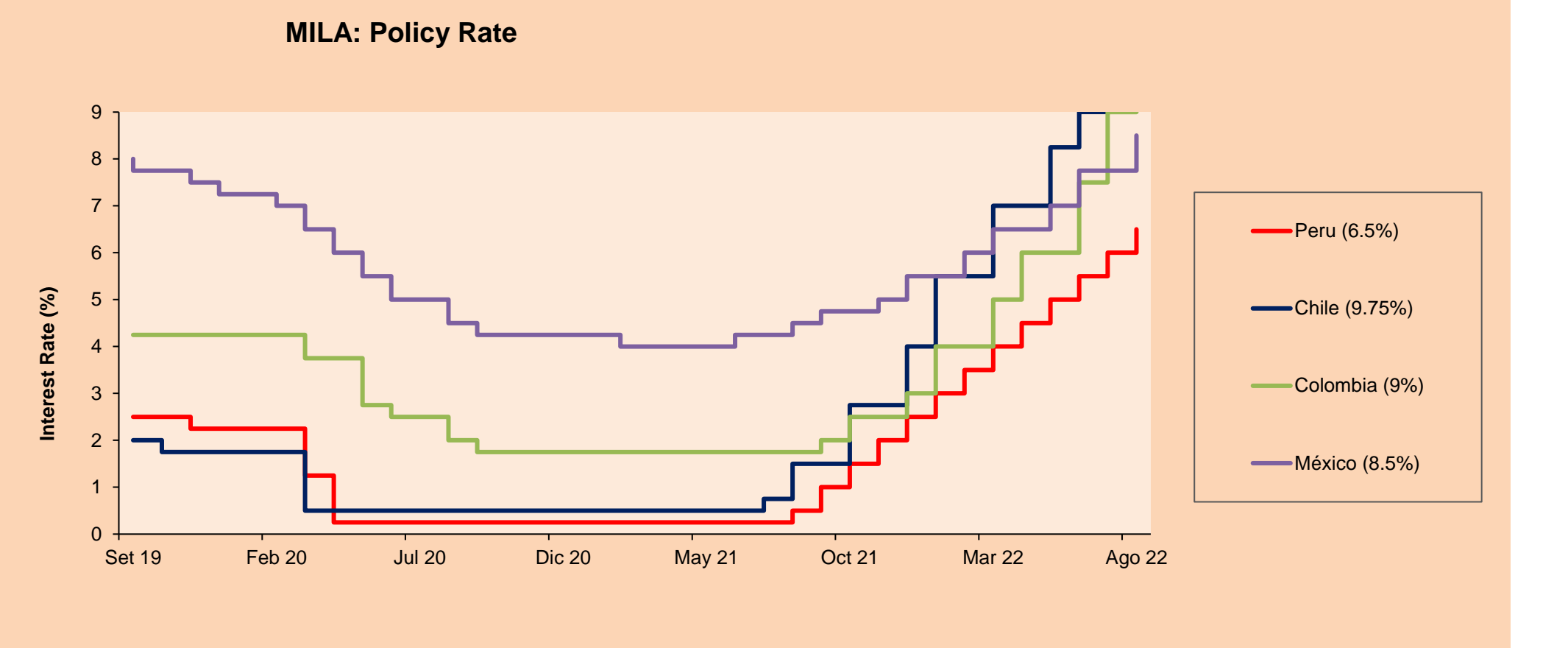
Mexico: The IPC index closed the day in negative territory with a -0.95% return. The sectors that benefited the most during the day were Communication services (-1.79%) and Finance (-1.51%). The worst performing stocks were Controladora Vuela CIA (-4.92%) and Cemex SAB-CPO (-3.35%) and in contrast, Grupo Aeroportuario del Sureste (+0.87%) and Grupo Aeroportuario del CENT (+0.61%) led the gains. Headline: Exports fall 0.3% in July, after three months of gains.



Base: 01/03/22=100
Source: Bloomberg

ETFs

ETFs	Curr.	Close	1D	5D	30 D	YTD	Exchange
▼ iShares MSCI All Peru Caped Index Fund	USD	26.39	-0.68%	1.03%	4.64%	-10.90%	NYSE Arca
- iShares MSCI All Chile Caped Index Fund	USD	27.89	0.00%	8.52%	7.27%	20.79%	Cboe BZX
- Global X MSCI Colombia	USD	9.02	0.00%	-0.22%	4.64%	-9.74%	I/A Field Not Applica
▼ iShares MSCI Mexico Capped	USD	46.54	-2.29%	-2.02%	1.82%	-8.02%	NYSE Arca
▼ iShares MSCI Emerging Markets	USD	40.01	-1.48%	0.28%	0.08%	-18.10%	NYSE Arca
▼ Vanguard FTSE Emerging Markets	USD	41.77	-1.32%	0.51%	0.94%	-15.55%	NYSE Arca
▼ iShares Core MSCI Emerging Markets	USD	49.15	-1.60%	0.18%	0.31%	-17.89%	NYSE Arca
▼ iShares JP Morgan Emerging Markets Bonds	USD	55.26	-1.30%	-1.20%	-0.59%	-12.03%	Cboe BZX
▼ Morgan Stanley Emerging Markets Domestic	USD	4.5	-0.66%	1.58%	4.17%	-17.88%	New York



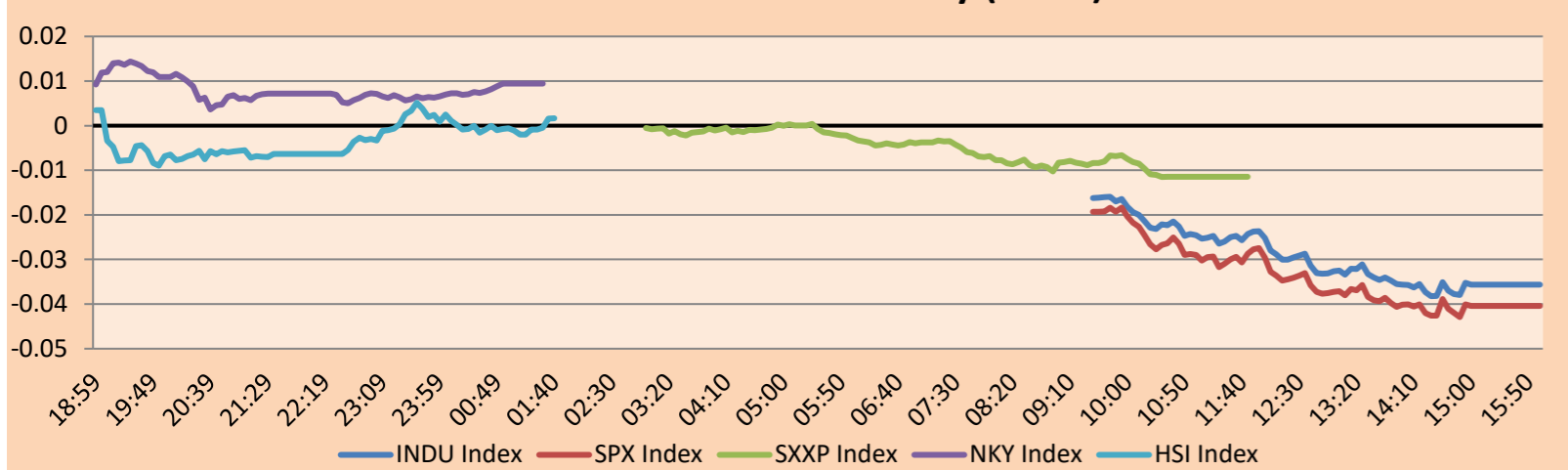
Source: Bloomberg

WORLD

Main Indices	Close	1 D*	5 D*	1 M*	YTD*	Market Cap. (US\$ Mill.)
▼ Dow Jones (USA)	32,283.40	-3.03%	-4.22%	1.64%	-11.16%	10,589,481
▼ Standard & Poor's 500 (EEUU)	4,057.66	-3.37%	-4.04%	3.48%	-14.87%	36,812,054
▼ NASDAQ Composite (USA)	12,141.71	-3.94%	-4.44%	5.01%	-22.39%	21,430,773
▼ Stoxx EUROPE 600 (Europe)	426.09	-1.68%	-2.58%	-0.01%	-12.65%	11,857,567
▼ DAX (Germany)	12,971.47	-2.26%	-4.23%	-0.96%	-18.34%	1,362,175
▼ FTSE 100 (United Kingdom)	7,427.31	-0.70%	-1.63%	1.66%	0.58%	1,739,414
▼ CAC 40 (France)	6,274.26	-1.68%	-3.41%	1.01%	-12.29%	2,061,310
▼ IBEX 35 (Spain)	8,063.90	-1.51%	-3.29%	-0.07%	-7.46%	542,534
▲ MSCI AC Asia Pacific Index	160.24	1.50%	-1.15%	0.70%	-17.02%	21,622,878
▲ HANG SENG (Hong kong)	20,170.04	1.01%	2.01%	0.07%	-13.79%	3,149,599
▼ SHANGHAI SE Comp. (China)	3,236.22	-0.31%	-0.67%	-0.52%	-11.09%	6,577,794
▲ NIKKEI 225 (Japan)	28,641.38	0.57%	-1.00%	3.02%	-0.52%	3,474,158
▲ S&P / ASX 200 (Australia)	7,104.06	0.79%	-0.15%	2.29%	-4.57%	1,635,383
▲ KOSPI (South Korea)	2,481.03	0.15%	-0.47%	1.20%	-16.68%	1,419,273

*Legend: Variation 1D: 1 Day; 5D: 5 Days; 1M: 1 Month; YTD: Var.% 12/31/21 to date

Mercado Evolución Intraday (var %)

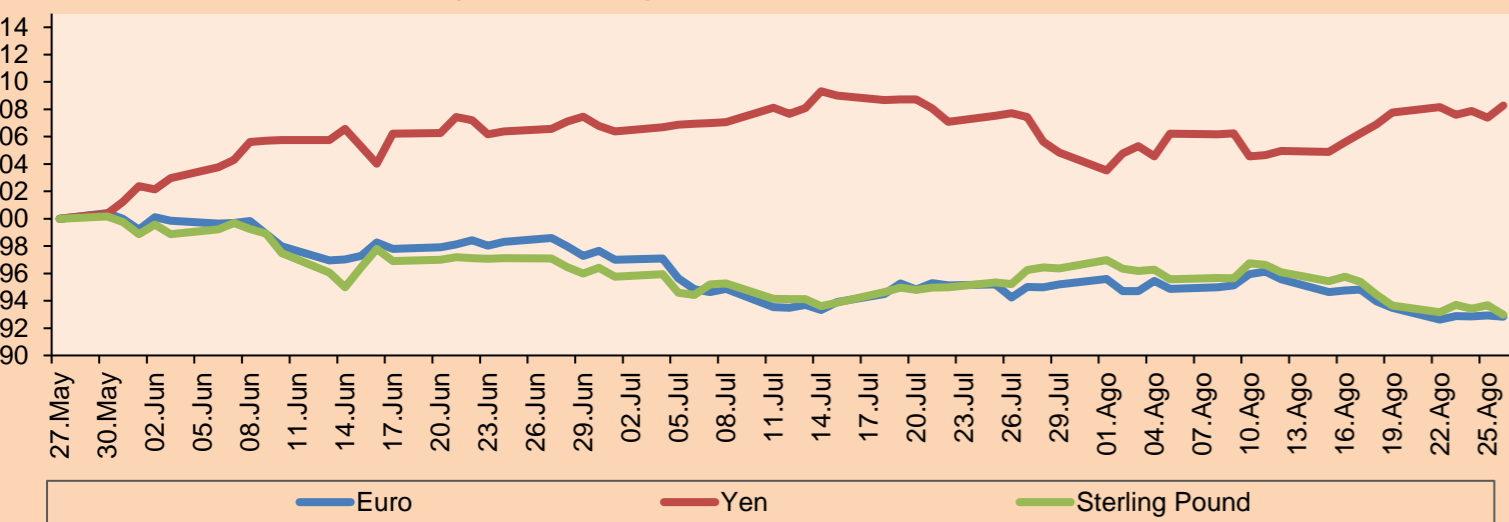


Source: Bloomberg

Currency	Price	1 D*	5 D*	1 M*	YTD*
▼ Euro	0.9966	-0.09%	-0.71%	-2.29%	-12.35%
▲ Yen	137.6400	0.84%	0.49%	0.78%	19.60%
▼ Sterling Pound	1.1744	-0.74%	-0.72%	-3.41%	-13.21%
▲ Yuan	6.8717	0.33%	0.79%	1.67%	8.11%
▲ Hong Kong Dollar	7.8467	0.00%	0.02%	-0.03%	0.64%
▼ Brazilian Real	5.0637	-0.90%	-2.06%	-3.44%	-9.18%
▲ Argentine Peso	137.7047	0.23%	1.14%	5.20%	34.04%

*Legend: Variation 1D: 1 Day; 5D: 5 Days; 1M: 1 Month; YTD: Var.% 12/31/21 to date

Foreign Exchange Indices (3 months)

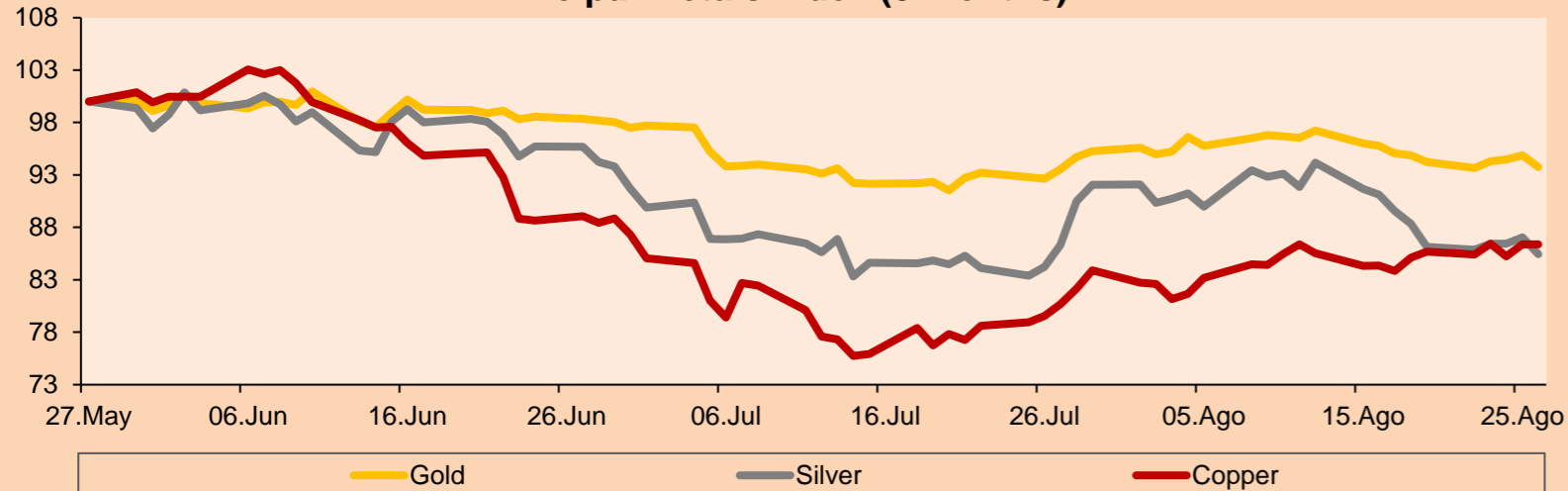


Base: 27/05/22=100
Source: Bloomberg

Commodities	Close	1 D*	5 D*	1 M*	YTD*
▼ Oro (US\$ Oz. T) (LME)	1,738.14	-1.17%	-0.51%	0.23%	-4.98%
▼ Plata (US\$ Oz. T) (LME)	18.90	-1.83%	-0.79%	-1.00%	-18.93%
- Cobre (US\$ TM) (LME)	8,167.00	0.00%	0.82%	7.08%	-16.16%
- Zinc (US\$ TM) (LME)	3,624.75	0.00%	2.16%	15.14%	0.97%
▲ Petróleo WTI (US\$ Barril) (NYM)	93.06	0.58%	2.90%	-2.34%	31.13%
▲ Estaño (US\$ TM) (LME)	24,485.00	0.00%	-2.08%	-0.18%	-37.81%
- Plomo (US\$ TM) (LME)	1,972.44	0.00%	-3.22%	-2.35%	-15.63%
▲ Azúcar #11 (US\$ Libra) (NYB-ICE)	18.47	3.18%	2.10%	6.15%	0.60%
▲ Cacao (US\$ TM) (NYB-ICE)	2,413.00	-0.17%	1.64%	0.79%	-5.74%
▼ Café Arábica (US\$ TM) (NYB-ICE)	238.10	-0.58%	11.60%	10.56%	6.70%

*Leyenda: Variación 1D: 1 Día; 5D: 5 Días; 1M: 1 Mes; YTD: Var.% 31/12/21 a la fecha

Principal Metals Index (3 months)



Base: 27/05/22=100
Source: Bloomberg

Equity

Germany (Stocks from DAX Index)

Largest gains	Curr.	Price	▲%	Exchange	Largest losses	Curr.	Price	▼%	Exchange
DTG GY	EUR	25.345	-0.47	Xetra	CON GY	EUR	56.38	-5.59	Xetra
BEI GY	EUR	103.55	-0.72	Xetra	ADS GY	EUR	151.54	-4.09	Xetra
MUV2 GY	EUR	235.3	-0.76	Xetra	PUM GY	EUR	62.1	-3.18	Xetra
DTE GY	EUR	18.676	-1.07	Xetra	MRK GY	EUR	173.7	-2.91	Xetra

Europe (Stocks from STOXX EUROPE 600)

Largest gains	Curr.	Price	▲%	Exchange	Largest losses	Curr.	Price	▼%	Exchange
SKAB SS	SEK	157	-3.15	Stockholm	DGE LN	GBP	3825.5	-0.71	Londres
TW/ LN	GBP	109.5	-0.32	Londres	HEXAB SS	SEK	114.85	-1.96	Stockholm
GFC FP	EUR	90.35	-0.99	EN Paris	LSEG LN	GBP	8268	-1.69	Londres
NG/ LN	GBP	1137.5	0.13	Londres	RUI FP	EUR	23.71	-0.71	EN Paris

Global Overview:

United States:

The U.S. market closed with negative yields, changing the trend of the last two days, due to Jerome Powell, head of the Federal Reserve, who signaled that the central bank would continue to raise interest rates to control inflation, dashing investors' hopes that the Fed's aggressive hiking approach could soon be modified. The DOW JONES index closed in negative territory, in a context where the Federal Reserve believes that the economy needs a tight monetary policy despite mentioning that it means a weaker labor market and difficulties for households and businesses. The S&P500 index ended with a negative performance, affected mainly by investors' reaction and their negative expectations of where the fed funds rate is headed this year and next, Lindsey Bell, chief money and markets strategist at Ally, mentioned that the market was anticipating that the Fed would pull back in the coming year and nothing Powell has said suggests that will be the case. Finally, the NASDAQ index led the declines among the three indexes, on track for its worst session in two months. Mainly because of declines in high-growth and technology stocks. Nvidia Corp and Amazon.com Inc. fell 7.9% and 3.8%, respectively. Thus, DOW JONES -3.03%; S&P 500 -3.37%; NASDAQ -3.94% ended the day with negative results.

Europe:

Major European indices ended the session with negative returns as Jerome Powell's repeated tightening stance in Jackson Hole raised fears. The pan-European STOXX 600 index ended with losses as the Fed chairman stated that the US economy would need tight monetary policy for some time before inflation is under control. This would mean slower growth, a weak labor market and "some pain" for households and businesses. The UK market, reflected in the FTSE 100, fell this session as UK energy bills are set to rise by 80% from October, according to regulator Ofgem. The agency stated that this crisis must be addressed through urgent and decisive government action; otherwise, millions of households will enter fuel poverty. Meanwhile, the DAX index closed in negative territory as German consumer confidence is set to hit a record low for the third consecutive time in September. Households are bracing themselves for rising energy bills. The French market fell this session as Powell pledged that the central bank will "use its tools forcefully" to attack inflation, which remains near a 40-year high. Thus, FTSE 100 -0.70%; CAC 40 -1.68%; DAX -2.26%; STOXX 600 -1.68% ended at negative levels.

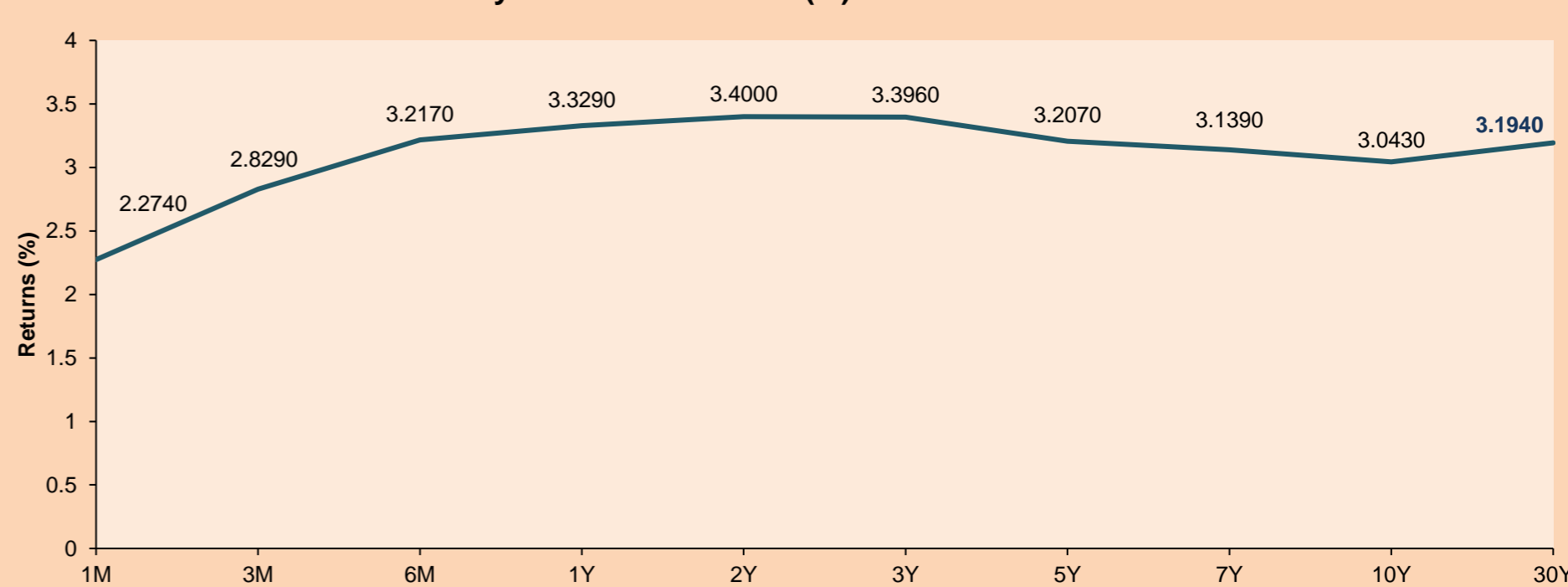
Asia:

The main Asian indices closed with mostly positive performances. The Chinese market closed in negative territory after an agreement was reached with Washington to evaluate Chinese companies to prevent nearly 200 firms from being delisted from the NY stock exchange. In addition, some banks have changed their fixed models due to the depreciation of the yuan. The Hang Seng index ended higher, led by gains in health care and energy stocks. PetroChina jumped 3 points after the company posted its record first-half earnings. The South Korean market rose this session after its won appreciated on expectations ahead of the Fed's monetary policy decisions. However, during the month of August, the bank raised its interest rate by 25 bps. The Japanese market gain this session, despite the yen's devaluation against the dollar. On the other hand, the Bank of Japan emphasized the need to stimulate consumption to support the recovery of its fragile economy. The Australian market ended higher thanks to the performance of banks and mining sector shares. Thus, NIKKEI +0.57%; HANG SENG +1.01%; CSI 300 -0.21%; S&P/ASX 200 +0.79%; KOSPI +0.15%, SHANGHAI COMPOSITE -0.31% ended with mixed performances.

ETFs

	Curr.	Close	1D	5D	30 D	YTD	Exchange
SPDR S&P 500 ETF TRUST	USD	405.31	-3.38%	-3.99%	1.06%	-14.66%	NYSE Arca
ISHARES MSCI EMERGING MARKET	USD	40.01	-1.48%	0.28%	0.08%	-18.10%	NYSE Arca
ISHARES IBOXX HIGH YLD CORP	USD	75.81	-1.65%	-1.48%	-1.76%	-12.87%	NYSE Arca
FINANCIAL SELECT SECTOR SPDR	USD	33.72	-2.99%	-3.55%	2.18%	-13.65%	NYSE Arca
VANECK GOLD MINERS ETF	USD	24.90	-4.71%	-1.39%	-2.47%	-22.26%	NYSE Arca
ISHARES RUSSELL 2000 ETF	USD	188.98	-3.29%	-2.91%	3.04%	-15.05%	NYSE Arca
SPDR GOLD SHARES	USD	161.76	-1.22%	-0.59%	0.06%	-5.38%	NYSE Arca
ISHARES 20+ YEAR TREASURY BO	USD	113.62	0.75%	0.51%	-2.74%	-23.33%	NASDAQ GM
INVESTCO QQQ TRUST SERIES 1	USD	307.44	-4.10%	-4.78%	0.21%	-22.72%	NASDAQ GM
ISHARES BIOTECHNOLOGY ETF	USD	122.95	-3.53%	-3.68%	-0.85%	-19.44%	NASDAQ GM
ENERGY SELECT SECTOR SPDR	USD	82.84	-1.17%	4.25%	10.84%	49.26%	NYSE Arca
PROSHARES ULTRA VIX ST FUTUR	USD	10.41	14.52%	11.10%	-8.12%	-16.25%	Cboe BZX
UNITED STATES OIL FUND LP	USD	75.85	-0.85%	2.42%	-2.59%	39.53%	NYSE Arca
ISHARES MSCI BRAZIL ETF	USD	32.01	-0.62%	2.69%	14.24%	14.04%	NYSE Arca
SPDR S&P OIL & GAS EXP & PR	USD	149.01	-0.93%	4.47%	12.89%	55.43%	NYSE Arca
UTILITIES SELECT SECTOR SPDR	USD	75.71	-1.53%	-2.56%	6.97%	5.77%	NYSE Arca
ISHARES US REAL ESTATE ETF	USD	96.90	-2.46%	-3.74%	0.57%	-16.57%	NYSE Arca
SPDR S&P BIOTECH ETF	USD	85.04	-4.85%	-2.56%	1.97%	-24.04%	NYSE Arca
ISHARES IBOXX INVESTMENT GRA	USD	111.11	-0.60%	-0.44%	-2.02%	-16.16%	NYSE Arca
ISHARES JP MORGAN USD EMERGI	USD	86.54	-1.56%	-0.30%	-0.02%	-20.65%	NASDAQ GM
REAL ESTATE SELECT SECT SPDR	USD	42.98	-2.54%	-3.80%	0.89%	-17.04%	NYSE Arca
ISHARES CHINA LARGE-CAP ETF	USD	30.70	-0.84%	5.21%	-3.49%	-16.07%	NYSE Arca
CONSUMER STAPLES SPDR	USD	74.45	-2.48%	-3.20%	0.76%	-3.45%	NYSE Arca
VANECK JUNIOR GOLD MINERS	USD	30.94	-5.12%	-1.24%	-3.34%	-26.21%	NYSE Arca
SPDR BLOOMBERG HIGH YIELD BO	USD	93.59	-1.59%	-1.57%	-1.56%	-13.80%	NYSE Arca
VANGUARD REAL ESTATE ETF	USD	95.62	-2.52%	-3.92%	0.29%	-17.58%	NYSE Arca
GRAYSCALE BITCOIN TRUST BTC	USD	12.67	-5.47%	-4.33%	-10.98%	-63.02%	OTC US

USA Treasury Bonds Yield Curve (%)



Source: Bloomberg

LIMA

Stocks

Ticker	Currency	Price	1D*	5D*	30D*	YTD*	Frequency	Volume (US\$)	Beta	Dividend Yield (%)	Price Earning	Market Cap. (M US\$)	Economic Sector*	Index Weight
▼ ALICORC1 PE**	S/.	5.81	-1.00%	-1.33%	1.10%	-10.51%	100.00%	2,140	0.87	4.30	9.82	1,289.75	Industrial	3.53%
- ATACOB1 PE**	S/.	0.08	0.00%	-11.11%	-11.11%	-33.33%	20.00%	7,847	#N/A N/A	0.00	-	22.73	Mining	1.02%
▼ BACKUS1 PE**	S/.	21.85	-0.23%	6.59%	4.05%	6.59%	65.00%	9,915	0.79	15.70	6.80	7,658.51	Industrial	0.82%
▲ BAP PE**	US\$	132.99	0.17%	0.52%	3.49%	7.44%	100.00%	94,008	1.24	3.01	-	10,575.37	Diverse	5.82%
▲ BVN PE**	US\$	5.53	-2.47%	2.41%	-7.06%	-24.25%	100.00%	75,289	1.40	1.27	-	1,524.26	Mining	5.88%
▼ CASAGRC1 PE**	S/.	8.20	-2.96%	-6.82%	-3.53%	-9.89%	95.00%	8,679	1.30	65.87	5.44	179.91	Agricultural	1.31%
▼ BBVAC1 PE**	S/.	1.49	-0.67%	-4.49%	-3.25%	-10.24%	90.00%	46,661	0.73	7.09	5.54	2,865.04	Finance	2.85%
- CORARE1 PE**	S/.	1.38	0.00%	-1.43%	-1.43%	-19.77%	95.00%	7,027	0.87	13.51	2.79	508.77	Industrial	1.72%
- CPACASC1 PE**	S/.	3.99	0.00%	-1.48%	1.01%	-19.39%	95.00%	2,778	0.79	0.00	11.08	476.19	Industrial	2.38%
- CVERDEC1 PE**	US\$	28.50	0.00%	-3.39%	5.56%	-23.45%	90.00%	30	0.90	0.00	8.44	9,976.60	Mining	5.25%
▲ ENGEPEC1 PE**	S/.	2.57	1.18%	1.18%	1.58%	-9.51%	90.00%	6,235	0.83	17.39	6.21	1,170.02	Public Services	1.44%
- ENDISPC1**	S/.	4.08	0.00%	0.49%	5.15%	2.00%	45.00%	130	0.84	0.00	6.69	678.62	Public Services	0.98%
▲ FERREYC1 PE**	S/.	2.20	1.38%	1.85%	9.45%	7.32%	100.00%	81,484	0.89	10.84	4.44	542.13	Diverse	4.90%
▲ AENZAC1 PE**	S/.	0.88	1.15%	-5.38%	1.15%	-35.77%	70.00%	9,713	1.04	0.00	-	274.37	Diverse	4.05%
▼ IFS PE**	US\$	22.30	-1.55%	-2.71%	-6.30%	-16.95%	90.00%	62,179	0.90	10.76	6.76	2,573.82	Diverse	7.22%
- INRETC1 PE**	US\$	33.00	0.00%	-2.94%	12.24%	-5.58%	90.00%	228	0.87	0.00	20.84	3,588.65	Diverse	5.28%
- LUSURC1 PE**	S/.	15.00	0.00%	-3.23%	-6.25%	5.34%	45.00%	19,828	0.00	5.10	12.29	1,902.55	Public Services	1.81%
▼ MINSUR1 PE**	S/.	3.88	-0.26%	-4.20%	2.11%	-1.77%	95.00%	94,083	1.11	11.30	1.37	2,913.64	Mining	3.09%
- PML PE**	US\$	0.09	0.00%	0.00%	0.00%	-25.00%	10.00%	3	1.10	0.00	-	23.79	Mining	2.12%
▲ SCCO PE**	US\$	50.92	1.15%	5.64%	4.13%	-17.58%	95.00%	230,077	1.06	7.86	12.45	39,365.87	Industrial	2.12%
- SIDERC1 PE**	S/.	1.62	0.00%	1.25%	8.00%	1.25%	90.00%	121	0.81	0.00	3.92	295.37	Mining	2.14%
- TV PE**	US\$	0.16	0.00%	0.00%	-51.52%	-87.69%	60.00%	10,024	1.26	0.00	-	15.83	Industrial	1.43%
▲ UNACEMC1 PE**	S/.	1.72	1.78%	1.18%	0.58%	-28.33%	95.00%	1,120	1.02	6.40	-	814.54	Mining	2.93%
▼ VOLCABC1 PE**	S/.	0.58	-3.33%	-12.12%	0.00%	-3.33%	100.00%	94,261	1.29	0.00	12.08	1,581.65	Industrial	3.00%
- BROCALC1 PE**	S/.	4.65	0.00%	0.00%	0.00%	-10.58%	20.00%	1,211	0.00	0.00	34.04	196.82	Mining	5.90%
- RIMSEGC1 PE**	S/.	0.76	0.00%	0.00%	0.00%	-11.63%	5.00%	198	0.00	0.00	11.23	326.99	Finance	3.09%
- CORAREC1 PE**	US\$	1.91	0.00%	0.00%	-2.55%	0.53%	15.00%	68,760	0.00	0.00	3.86	1,953.26	Mining	2.12%
▼ ENGIEC1 PE**	S/.	5.40	-1.82%	-2.70%	-2.70%	-7.85%	30.00%	1,571	0.54	4.65	17.17	845.85	Diversas	2.12%
- GBVLAC1 PE**	S/.	2.45	0.00%	-1.61%	-3.92%	-9.93%	35.00%	8,360	0.00	0.00	-	116.18	Diversas	2.14%

Quantity of shares: 29
Source: Bloomberg, Economática
* Bloomberg Industry Classification System
** PER is used in the stock market and original currency of the instrument

Up 6
Down 9
Hold 14

*Legend: Variation 1D: 1 Day; 5D: 5 Days; 1M: 1 Month; YTD: Var.% 12/31/21 to date

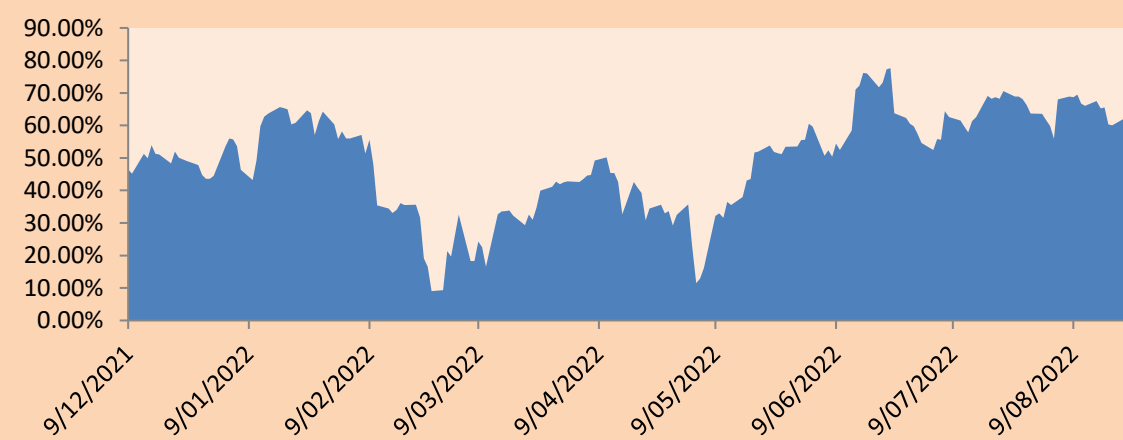
Sectorial Indices

	Close	1D*	5D*	30D*	YTD*	Beta
▼ S&P/BVLMining	331.59	-0.44%	1.51%	0.52%	-19.44%	1.13
▲ S&P/BVLConsumer	1,150.02	-0.41%	-2.06%	8.11%	0.18%	0.66
▲ S&P/BVLIndustrials	230.28	0.53%	-0.25%	3.17%	-10.77%	0.73
▼ S&P/BVLFinancials	938.66	-0.56%	-0.80%	-0.05%	3.59%	1.24
▲ S&P/BVLConstruction	228.79	0.13%	-1.23%	0.41%	-19.26%	0.69
▼ S&P/BVLPublicSvcs	618.90	-0.42%	-0.77%	1.55%	12.84%	0.16
▼ S&P/BVLElectricUtil	604.20	-0.43%	-0.77%	1.55%	12.84%	0.16

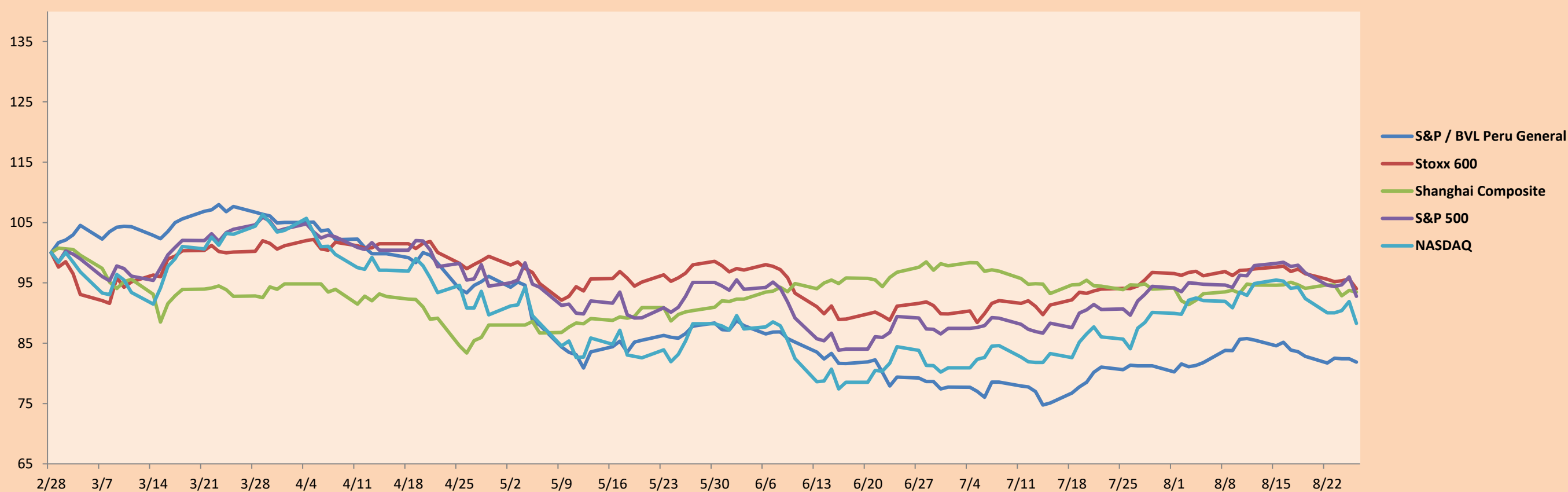
S&P/BVLConstructionTRPEN

*Legend: Variation 1D: 1 Day; 5D: 5 Days; 1M: 1 Month; YTD: Var.% 12/31/21 to date

Correlation Graph of Returns of Mining Index against Metallic Index of London (3 months)



Indices (6 months)



Base: 28/02/22=100
Source: Bloomberg

Capital Market Laboratory Coordinator: MS Javier Penny Pestana
Collaboration: Mariafe Urrutia, Fedele Calle, Miguel Solimano y Maciell Esquerre
email: pulsobursatil@ulima.edu.pe
facebook: www.facebook.com/pulsobursatil.ul

SOVEREIGN RATING

RISK RATINGS

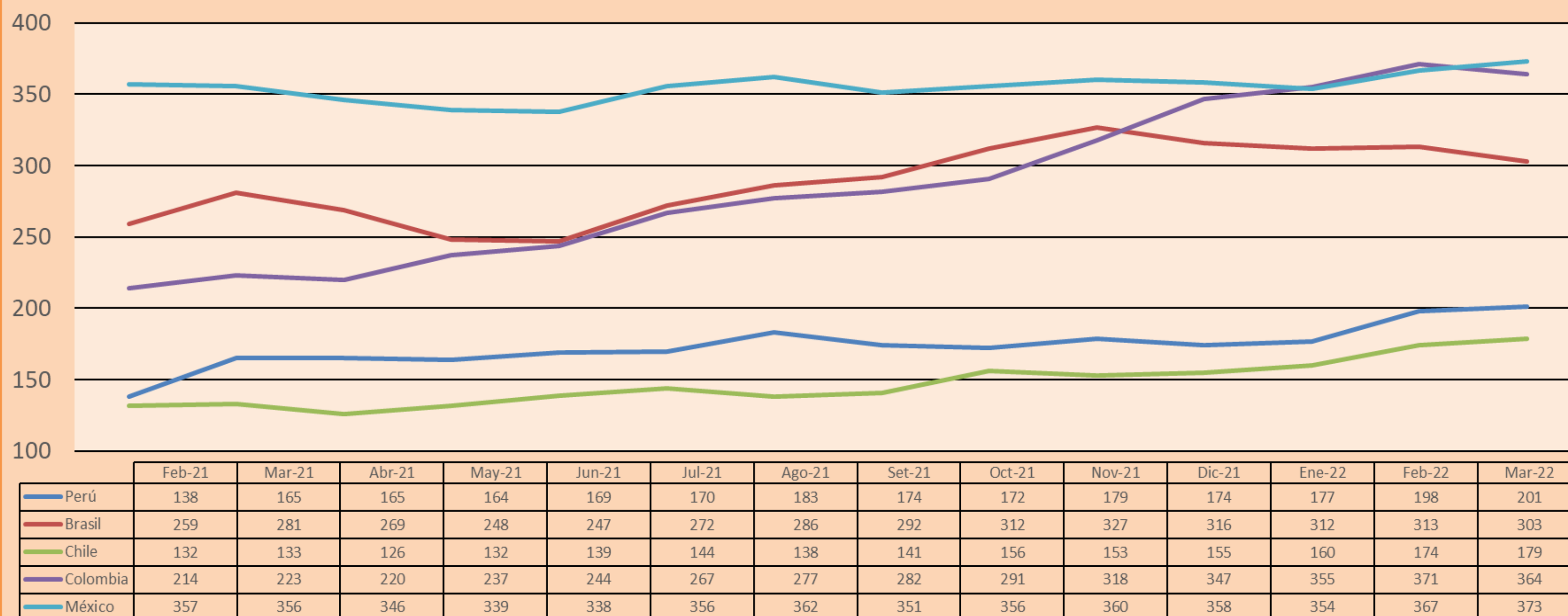
Moody's	S&P	Fitch	
Aaa	AAA	AAA	Prime
Aa1	AA+	AA+	High credit quality
Aa2	AA	AA	
Aa3	AA-	AA-	
A1	A+	A+	Medium-high grade, with low credit risk
A2	A	A	
A3	A-	A-	
Baa1	BBB+	BBB+	Moderate Credit Risk
Baa2	BBB	BBB	
Baa3	BBB-	BBB-	
Ba1	BB+	BB+	It has speculative elements and it is subject to substantial credit risk
Ba2	BB	BB	
Ba3	BB-	BB-	
B1	B+	B+	It is considered speculative and it has high credit risk
B2	B	B	
B3	B-	B-	
Caa1	CCC+	CCC	
Caa2	CCC	CCC	
Caa3	CCC-	CCC	
Ca	CC	CCC	Very close to default or in default
	C	DD	
C	D	D	

Source: Bloomberg

Latin America Credit Rating			
Clasificadora de riesgo			
Country	Moody's	Fitch	S&P
Peru	Baa1	BBB	BBB
México	Ba2	BB-	BB-
Venezuela	C	WD	NR
Brazil	Ba2	BB-	BB-
Colombia	Baa2	BB+	BB+
Chile	A1	A-	A
Argentine	Ca	WD	CCC+
Panama	Baa2	BBB-	BBB

Source: Bloomberg

LATAM Country Risk(bps)



Source: BCRP

Capital Market Laboratory Coordinator: MS Javier Penny Pestana
Collaboration: Mariafe Urrutia, Fedele Calle, Miguel Solimano y Maciell Esquerre
email: pulsobursatil@ulima.edu.pe
facebook: www.facebook.com/pulsobursatil.ul