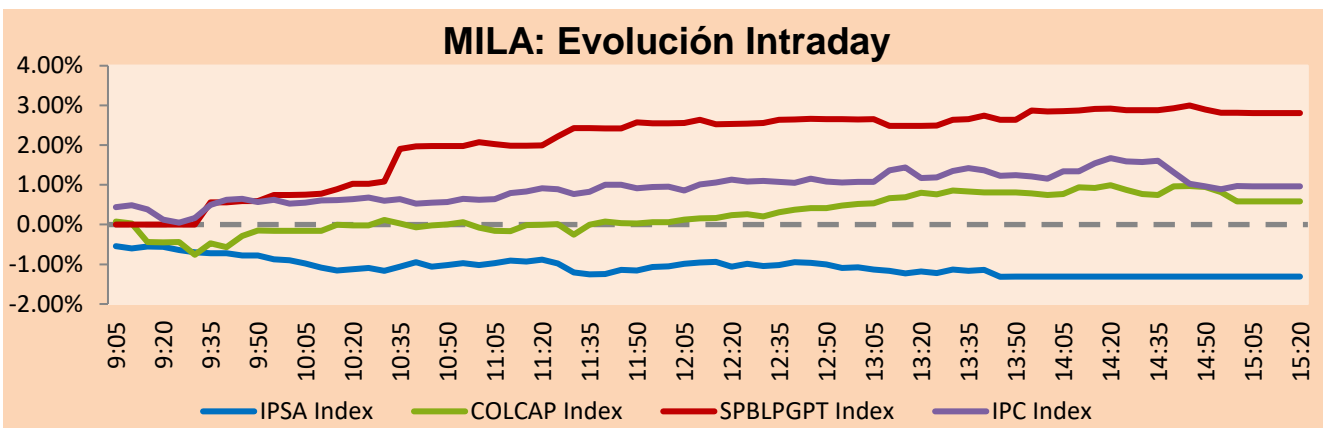


## MILA

Lima, Sep 28, 2022

Main Indexes	Close	1 D	5 D	1 M	YTD	Cap. Burs. (US\$ bill)
▼ IPSA (Chile)	5,100.24	-1.55%	-5.01%	-6.62%	18.38%	94.84
▼ IGPA (Chile)	27,636.56	-1.79%	-5.51%	-5.31%	28.14%	109.01
COLSC (Colombia)	845.45	0.00%	-1.97%	-2.92%	-13.12%	3.36
▲ COLCAP (Colombia)	1,130.35	0.58%	-5.63%	-12.97%	-19.89%	52.40
▲ S&P/BVL (Perú)*	19,318.66	2.81%	-1.73%	-0.63%	-8.49%	75.06
▲ S&P/BVL SEL (Perú)	506.43	2.83%	-1.14%	-0.37%	-10.14%	62.70
▲ S&P/BVL LIMA 25	27,683.36	1.87%	-2.28%	-0.84%	-8.56%	74.57
▲ IPC (México)	45,442.21	0.97%	-3.30%	-3.87%	-14.70%	286.78
▲ S&P MILA 40	398.62	0.87%	-8.00%	-13.16%	-10.39%	5,771.66

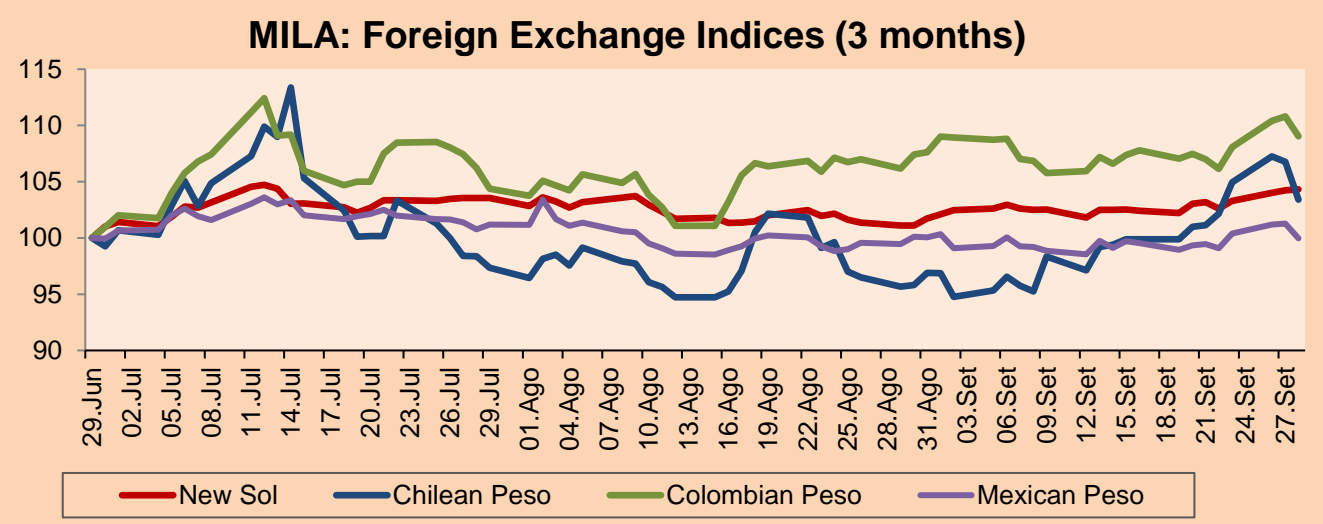
\*Legend: Variation 1D: 1 day; 5D: 5 days; 1M: 1 Month; YTD: Var% 12/31/21 to date



Source: Bloomberg

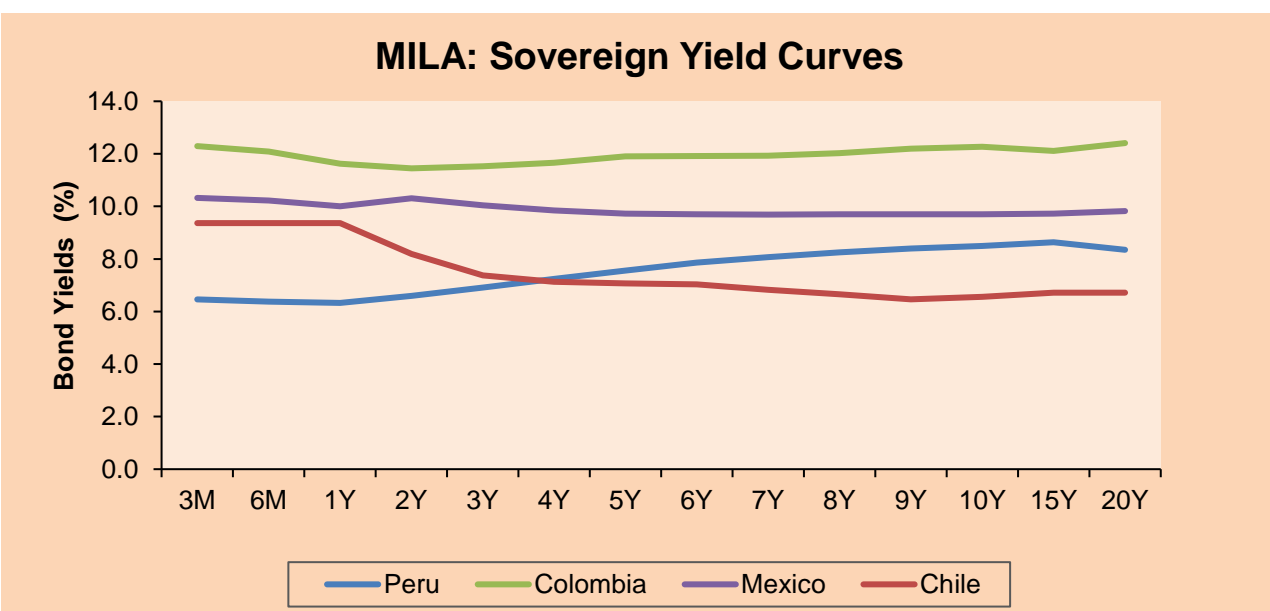
Currency	Price	1D*	5D*	30 D*	YTD*
▲ Sol (PEN)	3,9484	0.01%	1.02%	3.09%	-1.27%
▼ Chilean Peso (CLP)	956.38	-3.13%	2.24%	8.10%	12.25%
▼ Colombian Peso (COP)	4,487.17	-1.59%	1.89%	2.70%	9.97%
▼ Mexican Peso (MXN)	20.13	-1.27%	0.52%	0.52%	-1.97%

\*Legend: Variation 1D: 1 day; 5D: 5 days; 1M: 1 Month; YTD: Var% 12/31/21 to date



Base: 29/06/22=100  
Source: Bloomberg

Fixed Income	Currency	Price	Bid Yield (%)	Ask Yield (%)	Duration
PERU 7.35 07/21/25	USD	105.436	5.32	5.16	2.50
PERU 4.125 08/25/27	USD	95.234	5.30	5.18	4.33
PERU 8.75 11/21/33	USD	122.022	6.05	5.97	7.26
PERU 6.55 03/14/37	USD	103.494	6.22	6.14	8.86
PERU 5.625 11/18/2050	USD	95.402	5.99	5.94	13.21
CHILE 2.25 10/30/22	USD	99.917	5.58	0.88	0.08
CHILE 3.125 01/21/26	USD	93.751	5.27	5.14	3.07
CHILE 3.625 10/30/42	USD	72.837	6.01	5.92	12.62
COLOM 11.85 03/09/28	USD	116.937	8.03	7.88	4.07
COLOM 10.375 01/28/33	USD	119.278	7.72	7.56	6.52
COLOM 7.375 09/18/37	USD	88.076	8.88	8.77	8.43
COLOM 6.125 01/18/41	USD	74.084	9.07	9.02	9.40
MEX 4 10/02/23	USD	74.084	9.072	9.021	9.4
MEX5.55 01/45	USD	86.758	6.73	6.67	11.70



Source: Bloomberg

### Equity

Largest gains	Exchange	Currency	Price	▲%	Largest losses	Exchange	Currency	Price	▼%
ENGIE ENERGIA CH	Chile	CLP	382.90	8.88	CERVEZAS	Chile	CLP	5500	-3.68
COLBUN SA	Chile	CLP	74.79	5.34	CENCOSUD SHOPPIN	Chile	CLP	853.56	-3.64
SMU SA	Chile	CLP	93.02	4.59	TRUST FIBRA UNO	Mexico	MXN	20.11	-3.36
CEMENTOS ARGOS	Colombia	COP	4160.00	4.00	CMPC	Chile	CLP	1666	-3.13
GRUPO ARGOS SA	Colombia	COP	13200.00	3.94	SOQUIMICH-B	Chile	CLP	83110	-2.80

Per Turnover	Exchange	Amount (US\$)	Per Volume	Exchange	Volume
SOQUIMICH-B	Chile	32,256,671	ITAU CORPBANCA	Chile	445,194,401
GRUPO F BANORT-O	Mexico	30,064,647	BANCO SANTANDER	Chile	129,236,509
AMERICA MOVIL-L	Mexico	27,942,428	ENEL AMERICAS SA	Chile	119,255,123
WALMART DE MEXIC	Mexico	26,631,436	BANCO DE CHILE	Chile	107,210,842
GRUPO MEXICO-B	Mexico	25,281,732	ENEL CHILE SA	Chile	52,145,136

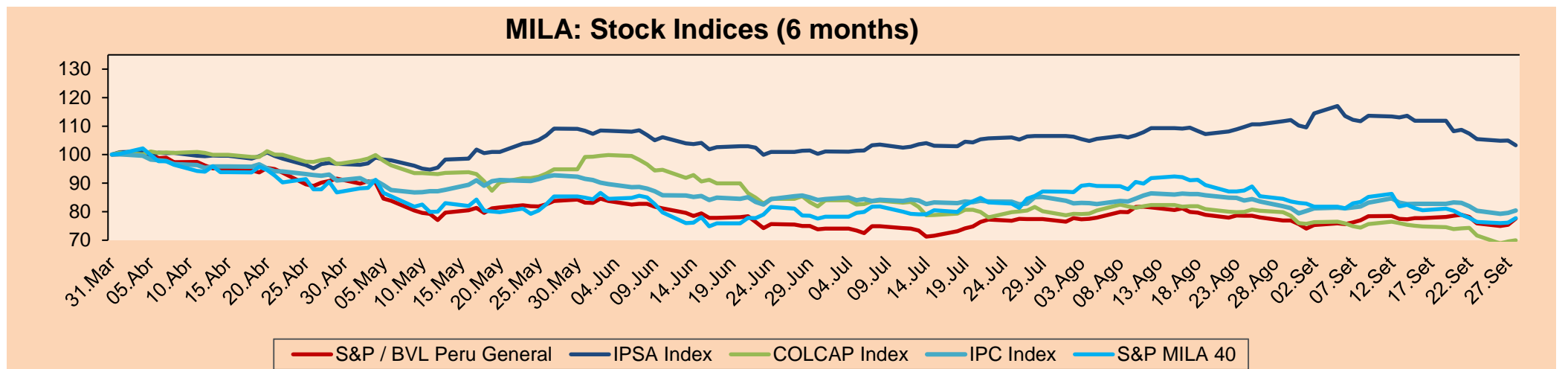
### MILA

Peru: The BVL General index ended today's session with a positive result of +2.81%. The index maintains a negative annual cumulative trend of -8.49% in local currency, while the dollar-adjusted performance declined to -7.32%. Next, the S&P/BVL Peru SEL varied by +2.83% while the S&P/BVL LIMA 25 by +1.87%. The PEN spot reached S/3.9484. Headline: BCR: Rates "probably" will not have to rise much more.

Chile: The IPSA index ended the day with a negative return of -1.56%. The most damaged sectors of the session were Real Estate (-4.60%) and Energy (-4.33%). The stocks with the lowest performance were Cencosud Shopping SA (-6.73%) and Empresas Copec SA (-4.33%). Headline: Budget: Report warns that 4.5% of GDP is allocated to programs with deficient evaluations.

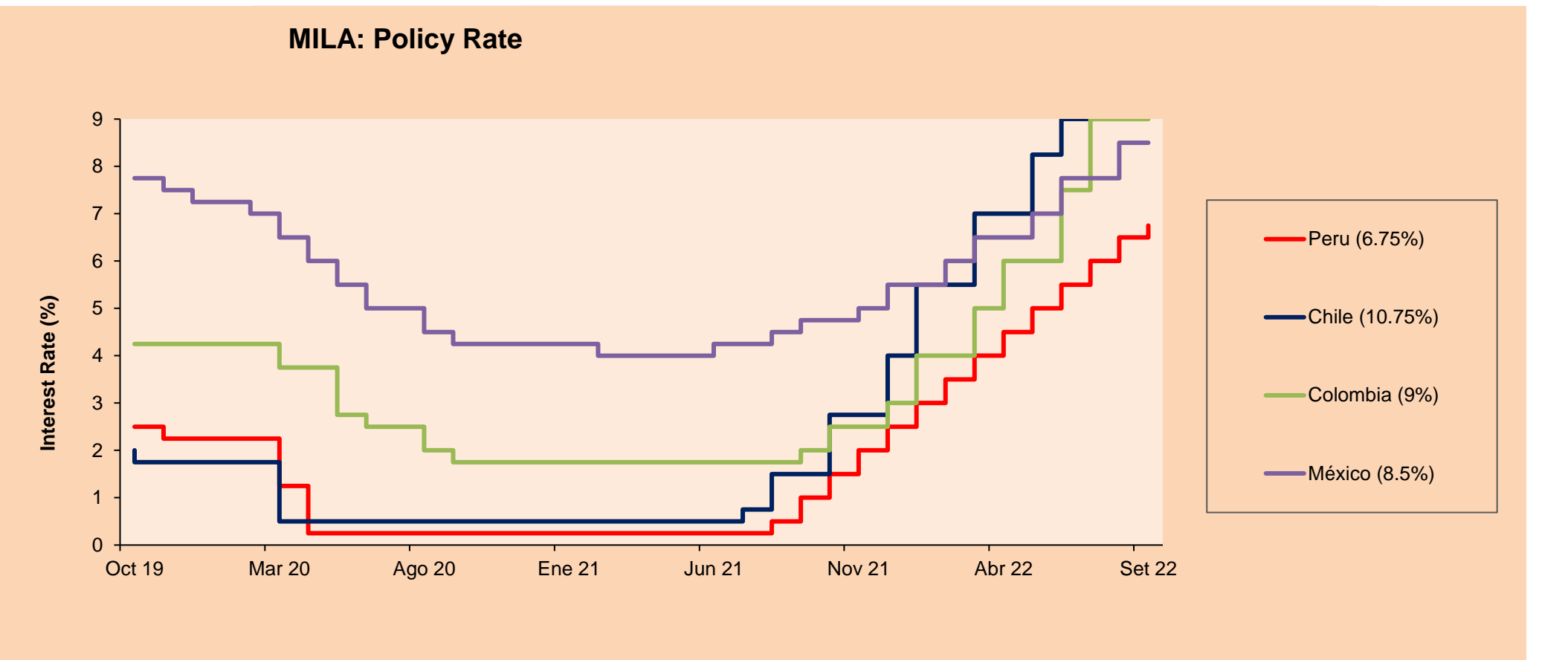
Colombia: The COLCAP index ended the session with a positive return of +0.58%. The sectors that benefited the most during the day were Energy (+1.92%) and Materials (+1.30%). The best performing stocks were Grupo Argos SA (+6.11%) and Canacol Energy Limited (+2.85%). Headline: The Colombian dollar dropped 71 pesos and is below \$4,500.

Mexico: The IPC index closed the day with a positive return of +0.97%. The sectors that benefited the most during the day were Finance (+1.93%) and Communication Services (+1.91%). The best performing stocks were Controladora Vuela Compañía de Aviación SAB de CV (+5.31%) and Regional SAB de CV (+3.83%). Headline: Banxico will raise its rate for the third time by 75 points, estimates Barclays.



Base: 01/04/22=100  
Source: Bloomberg

ETFs	Curr.	Close	1D	5D	30 D	YTD	Exchange
▲ iShares MSCI All Peru Caped Index Fund	USD	24.43	4.22%	-3.78%	-6.68%	-17.52%	NYSE Arca
▲ iShares MSCI All Chile Caped Index Fund	USD	24.43	1.79%	-5.97%	-13.46%	5.80%	Cboe BZX
- Global X MSCI Colombia	USD	-	-	-	-	-	-
▲ iShares MSCI Mexico Capped	USD	45.27	2.37%	-3.31%	-1.42%	-10.53%	NYSE Arca
▲ iShares MSCI Emerging Markets	USD	35.81	0.87%	-3.40%	-9.93%	-26.69%	NYSE Arca
▲ Vanguard FTSE Emerging Markets	USD	37.27	0.78%	-3.22%	-10.34%	-24.65%	NYSE Arca
▲ iShares Core MSCI Emerging Markets	USD	44.11	0.92%	-3.50%	-9.81%	-26.31%	NYSE Arca
▲ iShares JP Morgan Emerging Markets Bonds	USD	51.73	1.43%	-1.47%	-6.18%	-17.65%	Cboe BZX
▲ Morgan Stanley Emerging Markets Domestic	USD	4.15	2.47%	-4.38%	-7.78%	-24.27%	New York



Source: Bloomberg

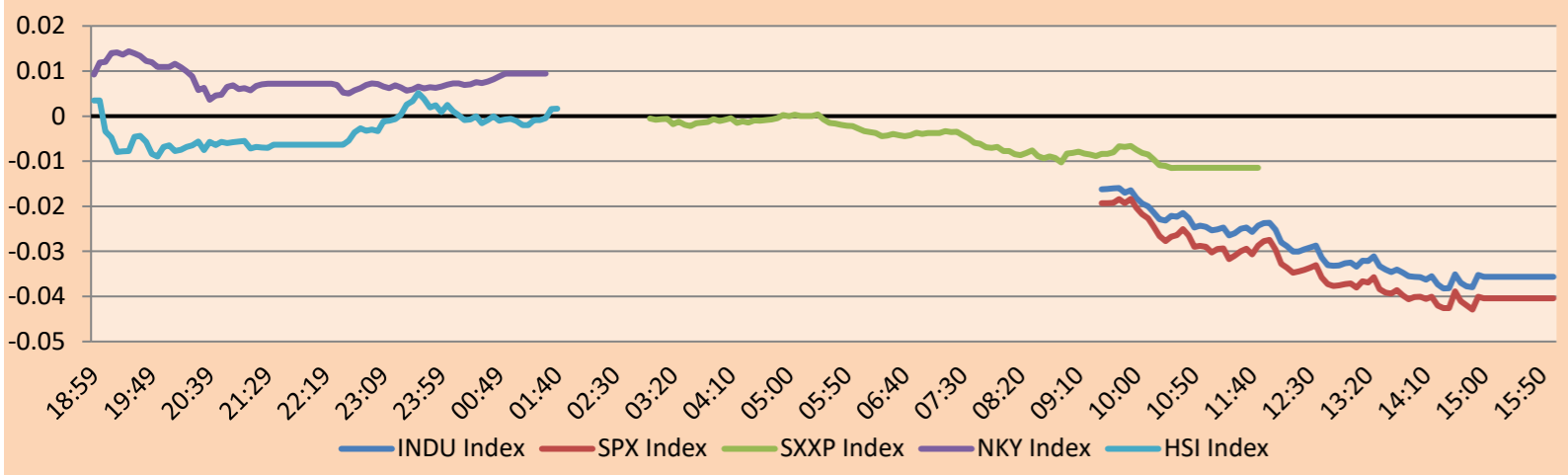


## WORLD

Main Indices	Close	1 D*	5 D*	1 M*	YTD*	Market Cap. (US\$ Mill.)
▲ Dow Jones (USA)	29,683.74	1.88%	-1.66%	-8.05%	-18.31%	9,322,326
▲ Standard & Poor's 500 (EEUU)	3,719.04	1.97%	-1.87%	-8.35%	-21.97%	32,044,871
▲ NASDAQ Composite (USA)	11,051.64	2.05%	-1.50%	-8.98%	-29.36%	18,361,899
▲ Stoxx EUROPE 600 (Europe)	389.41	0.30%	-4.33%	-8.61%	-20.17%	11,075,704
▲ DAX (Germany)	12,183.28	0.36%	-4.57%	-6.08%	-23.30%	1,310,211
▲ FTSE 100 (United Kingdom)	7,005.39	0.30%	-3.21%	-5.68%	-5.13%	1,762,092
▲ CAC 40 (France)	5,765.01	0.19%	-4.42%	-8.12%	-19.40%	1,937,970
▼ IBEX 35 (Spain)	7,442.20	-0.05%	-5.46%	-7.71%	-14.59%	511,686
▲ MSCI AC Asia Pacific Index	142.14	0.18%	-5.59%	-11.50%	-26.40%	19,504,182
▲ HANG SENG (Hong kong)	17,250.88	-3.41%	-6.47%	-13.85%	-26.27%	2,663,913
▼ SHANGHAI SE Comp. (China)	3,045.07	-1.58%	-2.31%	-6.04%	-16.34%	5,935,315
▼ NIKKEI 225 (Japan)	26,173.98	-1.50%	-5.47%	-6.12%	-9.09%	3,088,884
▼ S&P / ASX 200 (Australia)	6,462.03	-0.53%	-5.06%	-7.23%	-13.20%	1,409,744
▼ KOSPI (South Korea)	2,169.29	-2.45%	-7.58%	-10.61%	-27.15%	1,147,466

\*Legend: Variation 1D: 1 Day; 5D: 5 Days; 1M: 1 Month; YTD: Var.% 12/31/21 to date

Mercado Evolución Intraday (var %)

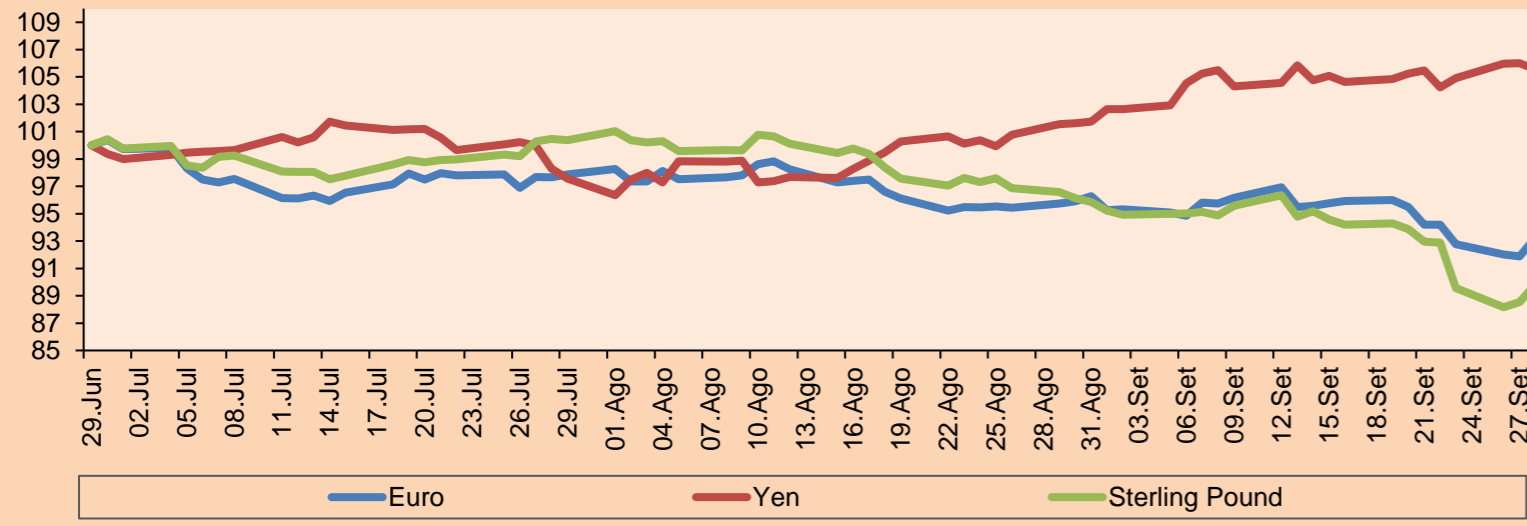


Source: Bloomberg

Currency	Price	1 D*	5 D*	1 M*	YTD*
▲ Euro	0.9735	1.47%	-1.04%	-2.62%	-14.38%
▼ Yen	144.1600	-0.44%	0.07%	3.92%	25.27%
▲ Sterling Pound	1.0889	1.45%	-3.38%	-7.00%	-19.53%
▲ Yuan	7.2005	0.34%	2.13%	4.22%	13.28%
▼ Hong Kong Dollar	7.8492	-0.01%	-0.01%	0.02%	0.67%
▼ Brazilian Real	5.3746	-0.11%	3.90%	6.87%	-3.61%
▲ Argentine Peso	146.8627	0.20%	1.38%	6.19%	42.95%

\*Legend: Variation 1D: 1 Day; 5D: 5 Days; 1M: 1 Month; YTD: Var.% 12/31/21 to date

Foreign Exchange Indices (3 months)

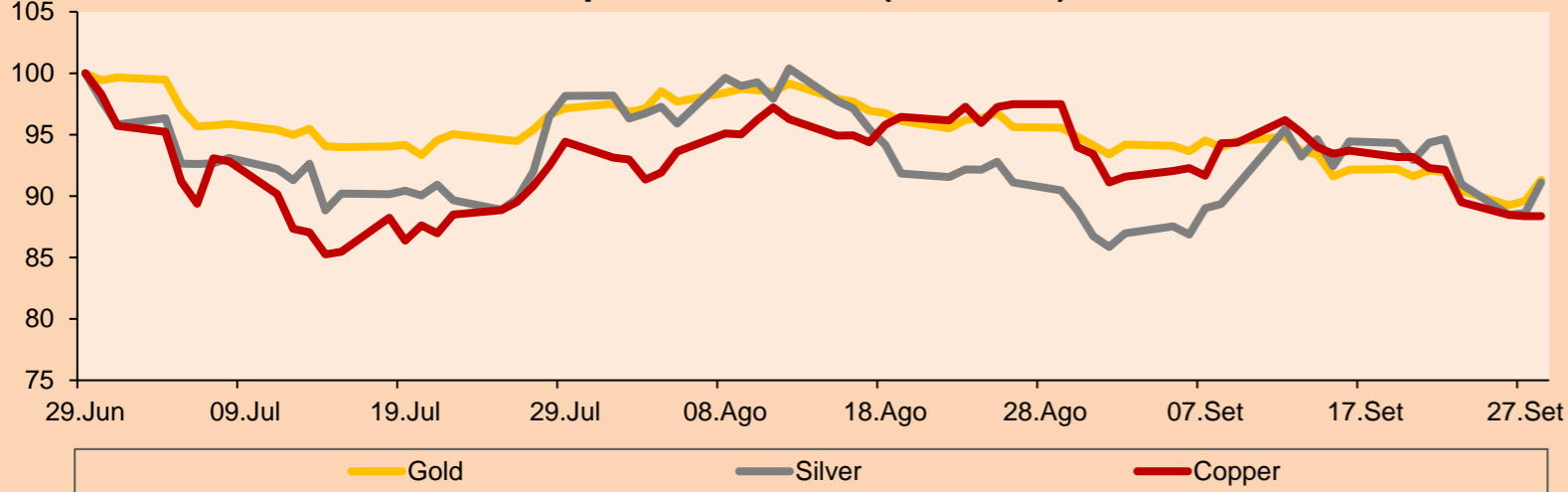


Base: 29/06/22=100  
Source: Bloomberg

Commodities	Close	1 D*	5 D*	1 M*	YTD*
▲ Oro (US\$ Oz. T) (LME)	1,659.97	1.91%	-0.83%	-4.44%	-9.25%
▲ Plata (US\$ Oz. T) (LME)	18.90	2.81%	-3.42%	0.73%	-18.91%
- Cobre (US\$ TM) (LME)	7,422.00	0.00%	-4.22%	-9.36%	-23.80%
- Zinc (US\$ TM) (LME)	2,875.00	0.00%	-7.62%	-21.16%	-19.92%
▲ Petróleo WTI (US\$ Barril) (NYM)	82.15	4.65%	-0.95%	-14.60%	16.72%
- Estaño (US\$ TM) (LME)	20,682.00	0.00%	-2.56%	-17.07%	-47.47%
- Plomo (US\$ TM) (LME)	1,737.50	0.00%	-4.53%	-12.41%	-25.68%
▲ Azúcar #11 (US\$ Libra) (NYB-ICE)	17.71	0.68%	-0.56%	-3.12%	-3.91%
▼ Cacao (US\$ TM) (NYB-ICE)	2,282.00	-0.17%	-2.98%	-5.31%	-10.86%
▲ Café Arábica (US\$ TM) (NYB-ICE)	228.70	1.94%	3.34%	-3.34%	2.49%

\*Leyenda: Variación 1D: 1 Día; 5D: 5 Días; 1M: 1 Mes; YTD: Var.% 31/12/21 a la fecha

Principal Metals Index (3 months)



Base: 29/06/22=100  
Source: Bloomberg

## Equity

Germany (Stocks from DAX Index)

Largest gains	Curr.	Price	▲ %	Exchange	Largest losses	Curr.	Price	▼ %	Exchange
CON GY	EUR	47.95	0.23	Xetra	BEI GY	EUR	101.2	-0.25	Xetra
AIR GY	EUR	89.12	-0.68	Xetra	HFG GY	EUR	22.52	-3.60	Xetra
MBG GY	EUR	54.44	-0.15	Xetra	HEN3 GY	EUR	60.7	0.80	Xetra
ADS GY	EUR	130.24	2.31	Xetra	EOAN GY	EUR	7.922	1.25	Xetra

Europe (Stocks from STOXX EUROPE 600)

Largest gains	Curr.	Price	▲ %	Exchange	Largest losses	Curr.	Price	▼ %	Exchange
CAST SS	SEK	124.05	4.38	Stockholm	DKSH SE	CHF	70.25	-0.35	SIX Swiss Ex
BALDB SS	SEK	45.76	4.47	Stockholm	BT/A LN	GBp	127.45	1.51	Londres
ADYEN NA	EUR	1271.2	-0.90	EN Amsterdam	STORB SS	SEK	8.6	-1.49	Stockholm
RNO FP	EUR	29.45	2.40	EN Paris	ADE NO	NOK	65.6	2.98	Oslo

## Global Overview:

### United States:

The U.S. market closes with positive returns on the back of taking advantage of lower valuations after a sell-off that pushed Wall Street to new bear market lows. The DOW JONES index closed in positive territory on lower U.S. and European Treasury yields. The Bank of England's announcement that it will temporarily conduct government bond purchases, to stabilize its falling currency, offered support for the markets. The S&P500 index ended with a positive performance, with its top gainer being Biogen. The biopharmaceutical company announced good results from its study of an experimental Alzheimer's drug. Biogen and its partner Eisai stated that the drug reduced cognitive decline by 27% and slowed the progression of the disease. Finally, the NASDAQ index closed with positive performance after the Bank of England announced a plan to intervene in the government bond markets. The institution is acting to suppress the intense volatility seeping into global bonds, equities and currencies. Thus, DOW JONES +1.88%; S&P 500 +1.97%; NASDAQ +2.05% ended the day with positive results.

### Europe:

The main European indices ended the session with positive returns after the Bank of England announced that it will make temporary purchases of long-term government bonds in the next two weeks. They also clarified that the goal for the year is to regain sterling's strength, as it has fallen to an all-time low in recent weeks. The pan-European STOXX 600 index ended with gains, recovering from its two-year lows, after people recovered their bullish expectations, however, money markets forecast an interest rate hike of 160 basis points and fish farm stocks such as Mowi, Leroy Seafood and SalMar fell between 15% and 25%. The UK market, reflected in the FTSE 100, ended with gains driven by real estate and utilities stocks following the announcement of the UK government's new tax plan. Land Securities Group shares were the biggest gainers with +6.94%. Similarly, the German market, reflected in the DAX index, closed in positive territory, despite the economic data report that showed a new historical low on consumer sentiment. The French market rallied this session, managing to recover from a four-day decline that took it to its lowest level in a year. However, the specter of inflation, a possible recession and harsh government policies continue to haunt the market. At the close of the day, the top gainers were Capgemini (+3.9%), Schneider Electric (+2.4%) and Renault (+2.4%). Thus, FTSE 100 +0.30%; CAC 40 +0.19%; DAX +0.36%; STOXX 600 +0.30% ended at positive levels.

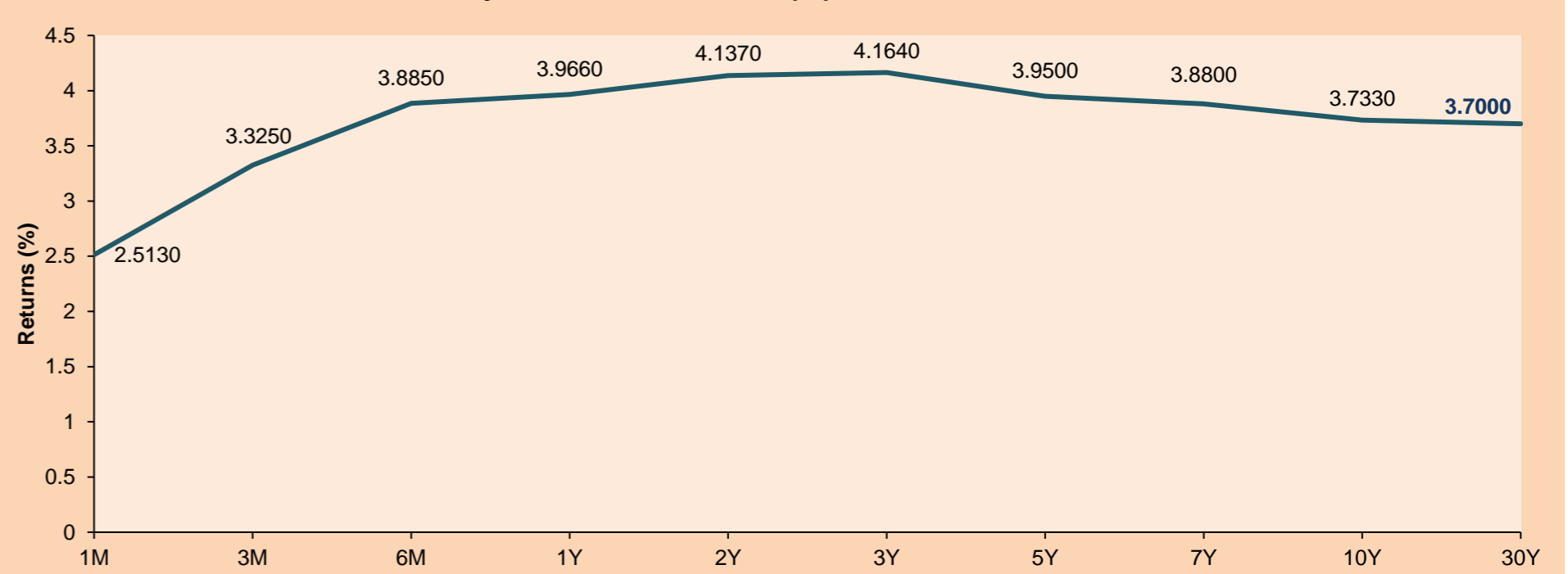
### Asia:

Major Asian indices closed with positive returns. The Chinese market closed in negative territory dragged down by a plunge in real estate developer stocks and bonds, after the chairman of CIFU recently predicted "unprecedented" liquidity stress. The Hang Seng index ended with negative numbers, followed by discouraging news for the Hong Kong market. The largest IPOs will open lower on Thursday, with shares of Leapmotor and Vanke falling 15% and 8%, respectively. The South Korean market closed lower, in a context where the deputy head of the main financial regulatory agency announced to prepare for a reactivation of stabilization funds in the stock market. The stocks that led the losses were Jayjun Cosmetic with -29.97% and Ibiogen with -29.71%. The Japanese market ended the session with negative returns amid recession worries hitting Wall Street overnight. Also, the index opened weak following a media report that Apple would abandon a plan to boost production of its new iPhones, TDK was down 3.05%. Thus, the only sector that rose was Pharma. The Australian market ended in negative territory despite better than expected domestic retail sales data in the face of rising inflation and interest rates. Technology and financial stocks led the decliners with Xero Ltd (-3.2%), Wisetech Global (-2%) and the "Big Four" banks losing between 0.4% and 1%. Thus, NIKKEI -1.50%; HANG SENG -3.41%; CSI 300 -1.63%; S&P/ASX 200 -0.53%; KOSPI -2.45%; SHANGAI COMPOSITE -1.58% ended with negative returns.

## ETFs

	Curr.	Close	1D	5D	30 D	YTD	Exchange
SPDR S&P 500 ETF TRUST	USD	370.53	1.97%	-1.82%	-7.97%	-21.99%	NYSE Arca
ISHARES MSCI EMERGING MARKET	USD	35.81	0.87%	-3.40%	-9.93%	-26.69%	NYSE Arca
ISHARES IBOXX HIGH YLD CORP	USD	72.40	1.79%	-1.50%	-4.13%	-16.79%	NYSE Arca
FINANCIAL SELECT SECTOR SPDR	USD	31.03	1.97%	-3.30%	-7.32%	-20.54%	NYSE Arca
VANECK GOLD MINERS ETF	USD	23.58	7.18%	-1.05%	-4.19%	-26.38%	NYSE Arca
ISHARES RUSSELL 2000 ETF	USD	169.94	3.16%	-3.08%	-9.24%	-23.61%	NYSE Arca
SPDR GOLD SHARES	USD	154.69	2.08%	-0.71%	-4.43%	-9.52%	NYSE Arca
ISHARES 20+ YEAR TREASURY BO	USD	104.33	3.35%	-3.42%	-7.41%	-29.60%	NASDAQ GM
INVECO QQQ TRUST SERIES 1	USD	279.94	1.99%	-1.28%	-8.04%	-29.64%	NASDAQ GM
ISHARES BIOTECHNOLOGY ETF	USD	119.33	3.93%	1.20%	-2.27%	-21.81%	NASDAQ GM
ENERGY SELECT SECTOR SPDR	USD	72.60	4.43%	-4.44%	-13.66%	30.81%	NYSE Arca
PROSHARES ULTRA VIX ST FUTUR	USD	11.95	-6.13%	9.43%	15.91%	-3.86%	Cboe BZX
UNITED STATES OIL FUND LP	USD	67.13	4.21%	-2.26%	-14.69%	23.49%	NYSE Arca
ISHARES MSCI BRAZIL ETF	USD	29.31	0.48%	-6.18%	-9.23%	4.42%	NYSE Arca
SPDR S&P OIL & GAS EXP & PR	USD	125.54	6.56%	-4.36%	-16.77%	30.95%	NYSE Arca
UTILITIES SELECT SECTOR SPDR	USD	69.59	1.07%	-4.49%	-8.36%	-2.78%	NYSE Arca
ISHARES US REAL ESTATE ETF	USD	83.01	1.94%	-5.47%	-13.57%	-28.53%	NYSE Arca
SPDR S&P BIOTECH ETF	USD	81.20	5.15%	2.62%	-3.29%	-27.47%	NYSE Arca
ISHARES IBOXX INVESTMENT GRA	USD	103.48	2.01%	-2.94%	-6.17%	-21.91%	NYSE Arca
ISHARES JP MORGAN USD EMERGI	USD	80.60	2.40%	-3.45%	-6.30%	-26.10%	NASDAQ GM
REAL ESTATE SELECT SECT SPDR	USD	36.65	1.89%	-4.28%	-13.99%	-29.26%	NYSE Arca
ISHARES CHINA LARGE-CAP ETF	USD	26.82	1.09%	-1.14%	-11.83%	-26.68%	NYSE Arca
CONSUMER STAPLES SPDR	USD	69.05	1.20%	-2.31%	-7.10%	-10.45%	NYSE Arca
VANECK JUNIOR GOLD MINERS	USD	28.36	7.87%	-2.98%	-7.14%	-32.36%	NYSE Arca
SPDR BLOOMBERG HIGH YIELD BO	USD	88.96	1.59%	-1.79%	-4.55%	-18.06%	NYSE Arca
VANGUARD REAL ESTATE ETF	USD	81.68	2.07%	-5.66%	-13.80%	-29.59%	NYSE Arca
GRAYSCALE BITCOIN TRUST BTC	USD	11.68	2.82%	0.17%	-7.23%	-65.90%	OTC US

USA Treasury Bonds Yield Curve (%)



Source: Bloomberg



# LIMA

## Stocks

Ticker	Currency	Price	1D*	5D*	30D*	YTD*	Frequency	Volume (US\$)	Beta	Dividend Yield (%)	Price Earning	Market Cap. (M US\$)	Economic Sector*	Index Weight	
-	ALICORC1 PE**	S/.	5.70	0.00%	-1.97%	-2.92%	-13.12%	100.00%	16,110	0.91	4.39	9.63	1,230.88	Industrial	3.53%
-	ATACOCB1 PE**	S/.	0.08	0.00%	0.00%	0.00%	-33.33%	0.00%	301	#N/A N/A	0.00	-	19.86	Mining	1.02%
▼	BACKUS1 PE**	S/.	21.00	-4.11%	-3.85%	-3.89%	2.44%	80.00%	3,335	0.79	16.33	6.53	7,221.96	Industrial	0.82%
▲	BAP PE**	US\$	125.83	5.18%	-4.67%	-3.39%	1.66%	90.00%	128,287	1.25	3.18	-	10,006.00	Diverse	5.82%
▲	BVN PE**	US\$	6.40	10.15%	3.06%	18.74%	-12.33%	100.00%	445,412	1.43	1.09	-	1,764.06	Mining	5.88%
▼	CASAGRC1 PE**	S/.	8.35	-0.60%	-0.83%	-2.91%	-8.24%	85.00%	6,397	1.32	64.69	5.54	178.14	Agricultural	1.31%
-	BBVAC1 PE**	S/.	1.45	0.00%	-3.33%	-3.33%	-12.65%	95.00%	5,905	0.74	7.28	5.40	2,711.01	Finance	2.85%
▼	CORARE1 PE**	S/.	1.33	-0.75%	-7.64%	-10.74%	-22.67%	75.00%	21,436	0.96	14.02	2.69	492.39	Industrial	1.72%
▲	CPACASC1 PE**	S/.	3.79	1.07%	-1.56%	-3.32%	-23.43%	100.00%	4,463	0.83	0.00	10.53	435.94	Industrial	2.38%
-	CVERDEC1 PE**	US\$	27.00	0.00%	-3.57%	-5.23%	-27.48%	80.00%	2,700	0.89	6.88	7.99	9,451.51	Mining	5.25%
-	ENGEPEC1 PE**	S/.	2.60	0.00%	-2.26%	1.17%	-8.45%	90.00%	35,164	0.82	17.19	6.28	1,150.94	Public Services	1.44%
▼	ENDISPC1**	S/.	3.86	-1.03%	-2.28%	-5.39%	-3.50%	50.00%	1,451	0.83	5.36	6.33	624.27	Public Services	0.98%
▲	FERREYC1 PE**	S/.	2.15	0.94%	-3.15%	-2.27%	4.88%	100.00%	11,940	0.93	12.08	4.34	515.15	Diverse	4.90%
▼	AENZAC1 PE**	S/.	0.68	-8.11%	-11.69%	-21.84%	-50.36%	75.00%	15,470	1.09	0.00	-	206.15	Diverse	4.05%
▲	IFS PE**	US\$	20.50	2.50%	-3.98%	-7.24%	-23.65%	100.00%	52,493	0.85	11.71	6.40	2,366.07	Diverse	7.22%
▲	INRETC1 PE**	US\$	32.11	0.03%	0.97%	0.03%	-8.13%	80.00%	77,248	0.87	4.27	20.88	3,491.86	Diverse	5.28%
▼	LUSURC1 PE**	S/.	14.30	-1.38%	-6.96%	-6.84%	0.42%	60.00%	4,629	0.00	5.35	11.72	1,763.60	Public Services	1.81%
▲	MINSURI1 PE**	S/.	4.10	7.61%	-0.97%	7.89%	3.80%	95.00%	26,121	1.10	10.69	1.41	2,993.70	Mining	3.09%
-	PML PE**	US\$	0.09	0.00%	12.50%	0.00%	-25.00%	35.00%	805	-	0.00	-	22.47	Mining	2.12%
▲	SCCO PE**	US\$	44.65	2.41%	-2.70%	-10.57%	-27.73%	90.00%	48,389	1.04	8.96	10.92	34,518.58	Industrial	2.12%
-	SIDERC1 PE**	S/.	1.47	0.00%	-5.16%	-9.26%	-8.13%	75.00%	5,103	0.82	28.25	3.56	260.61	Mining	2.14%
-	TV PE**	US\$	-	-	-	-	-	0.00%	-	1.27	0.00	-	#N/A N/A	Industrial	1.43%
▲	UNACEMC1 PE**	S/.	1.68	3.07%	5.00%	-0.59%	-30.00%	80.00%	13,151	1.01	6.55	-	773.59	Mining	2.93%
▲	VOLCABC1 PE**	S/.	0.58	3.57%	-6.45%	1.75%	-3.33%	100.00%	89,290	1.48	0.00	11.73	598.83	Industrial	3.00%
-	BROCALC1 PE**	S/.	4.91	0.00%	0.00%	5.59%	-5.58%	25.00%	2,487	0.00	0.00	34.90	202.07	Mining	5.90%
-	RIMSEGC1 PE**	S/.	0.71	0.00%	0.00%	0.00%	-17.44%	5.00%	320	0.00	0.00	10.49	297.03	Finance	3.09%
-	CORAREC1 PE**	US\$	1.91	0.00%	-0.52%	0.00%	0.53%	30.00%	6,303	0.00	0.00	3.86	1,944.14	Mining	2.12%
-	ENGIEC1 PE**	S/.	5.40	0.00%	0.00%	0.00%	-7.85%	15.00%	27	#N/A N/A	0.00	16.67	822.46	Diversas	2.12%
-	GBVLAC1 PE**	S/.	2.40	0.00%	-0.83%	-2.04%	-11.76%	30.00%	1,520	0.00	0.00	-	110.68	Diversas	2.14%

Quantity of shares: 28  
Source: Bloomberg, Economática  
\* Bloomberg Industry Classification System  
\*\* PER is used in the stock market and original currency of the instrument

Up 11  
Down 6  
Hold 11

\*Legend: Variation 1D: 1 Day; 5D: 5 Days; 1M: 1 Month; YTD: Var.% 12/31/21 to date

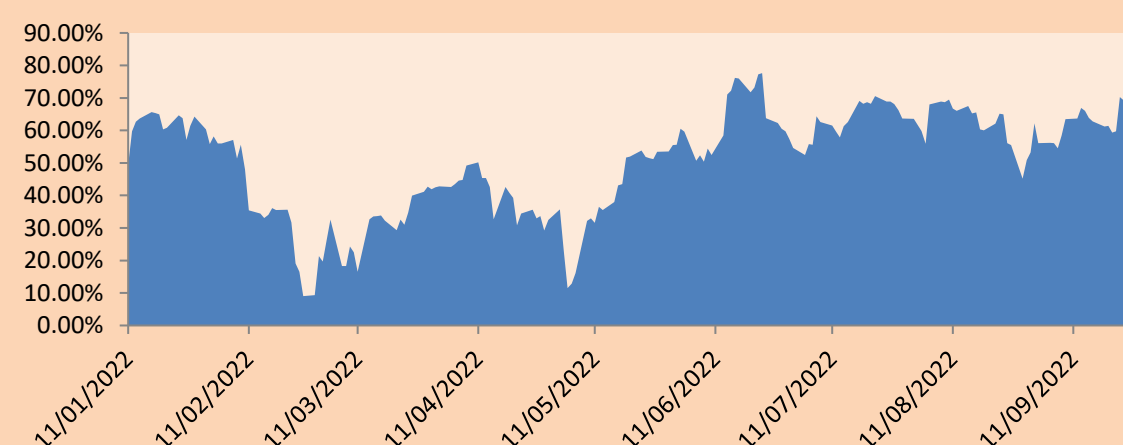
### Sectorial Indices

	Close	1D*	5D*	30D*	YTD*	Beta	
▲	S&P/BVLMining	322.27	3.75%	-0.98%	-1.10%	-21.70%	1.13
▼	S&P/BVLConsumer	1,136.62	-1.00%	-1.00%	1.14%	-0.99%	0.65
▲	S&P/BVLIndustrials	226.09	0.65%	-1.34%	-1.77%	-12.39%	0.77
▲	S&P/BVLFinancials	912.84	4.75%	-3.72%	-0.98%	0.74%	1.24
▲	S&P/BVLConstruction	218.64	0.51%	-0.42%	-4.37%	-22.85%	0.72
▼	S&P/BVLPublicSvcs	616.60	-0.18%	-1.10%	-0.37%	12.42%	0.14
▼	S&P/BVLElectricUtil	601.95	-0.18%	-1.10%	-0.37%	12.42%	0.15

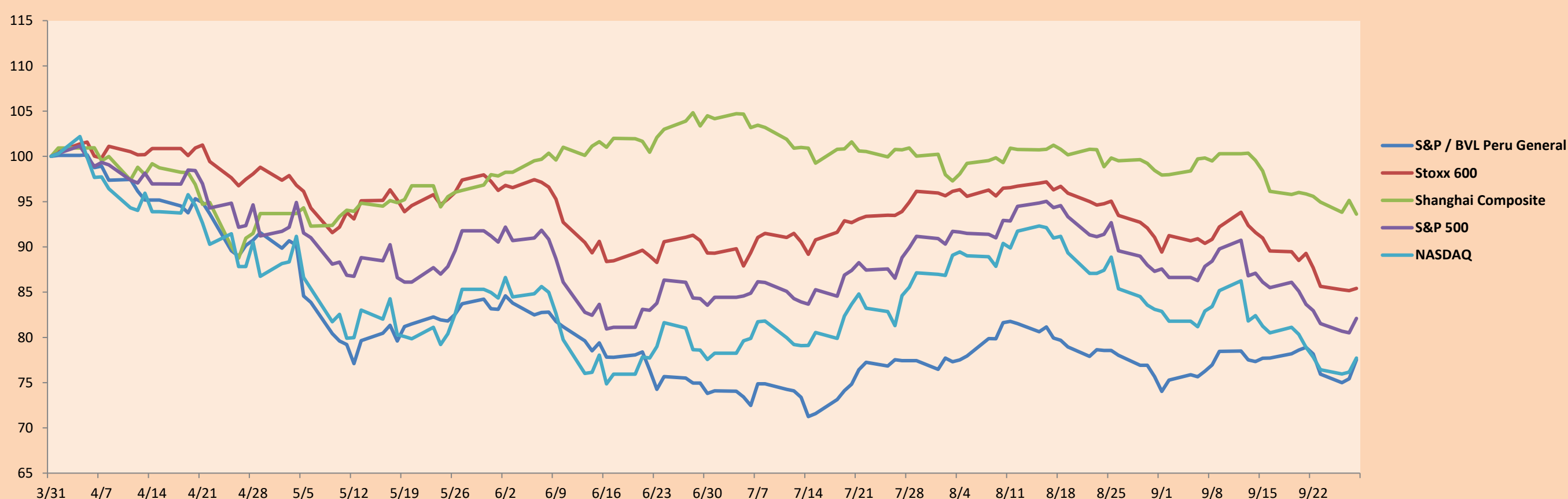
S&P/BVLConstructionTRPEN

\*Legend: Variation 1D: 1 Day; 5D: 5 Days; 1M: 1 Month; YTD: Var.% 12/31/21 to date

Correlation Graph of Returns of Mining Index against Metallic Index of London (3 months)



Indices (6 months)



Base: 31/03/22=100  
Source: Bloomberg

Capital Market Laboratory Coordinator: MS Javier Penny Pestana  
Collaboration: Mariafe Urrutia, Fedele Calle, Miguel Solimano y Maciell Esquerre  
email: pulsobursatil@ulima.edu.pe  
facebook: www.facebook.com/pulsobursatil.ul

## SOVEREIGN RATING

### RISK RATINGS

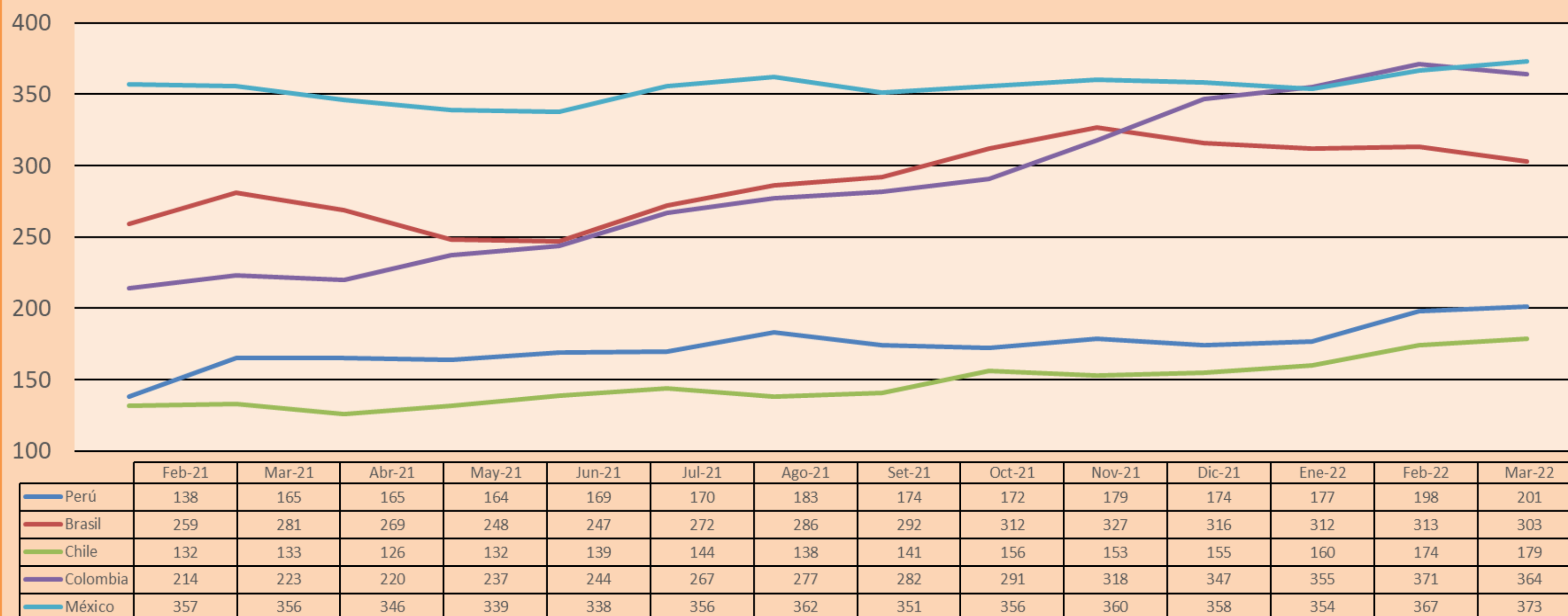
Moody's	S&P	Fitch	
Aaa	AAA	AAA	Prime
Aa1	AA+	AA+	High credit quality
Aa2	AA	AA	
Aa3	AA-	AA-	
A1	A+	A+	Medium-high grade, with low credit risk
A2	A	A	
A3	A-	A-	
Baa1	BBB+	BBB+	Moderate Credit Risk
Baa2	BBB	BBB	
Baa3	BBB-	BBB-	
Ba1	BB+	BB+	It has speculative elements and it is subject to substantial credit risk
Ba2	BB	BB	
Ba3	BB-	BB-	
B1	B+	B+	It is considered speculative and it has high credit risk
B2	B	B	
B3	B-	B-	
Caa1	CCC+	CCC	
Caa2	CCC	CCC	
Caa3	CCC-	CCC	
Ca	CC		Very close to default or in default
	C		
C	D	DDD DD D	

Source: Bloomberg

Latin America Credit Rating			
Clasificadora de riesgo			
Country	Moody's	Fitch	S&P
Peru	Baa1	BBB	BBB
México	Ba2	BB-	BB-
Venezuela	C	WD	NR
Brazil	Ba2	BB-	BB-
Colombia	Baa2	BB+	BB+
Chile	A2	A-	A
Argentine	Ca	WD	CCC+
Panama	Baa2	BBB-	BBB

Source: Bloomberg

## LATAM Country Risk(bps)



Source: BCRP

Capital Market Laboratory Coordinator: MS Javier Penny Pestana  
Collaboration: Mariafe Urrutia, Fedele Calle, Miguel Solimano y Maciell Esquerre  
email: pulsobursatil@ulima.edu.pe  
facebook: www.facebook.com/pulsobursatil.ul