

PULSO BURSÁTIL

FACULTAD DE CIENCIAS EMPRESARIALES Y ECONÓMICAS
CARRERA DE ECONOMÍA
LABORATORIO DE MERCADO DE CAPITALES

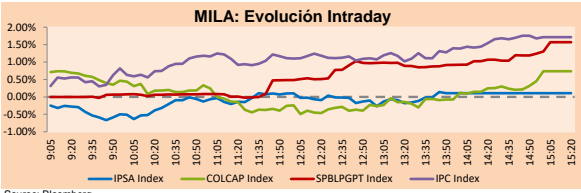


MILA

Lima, October 21, 2022

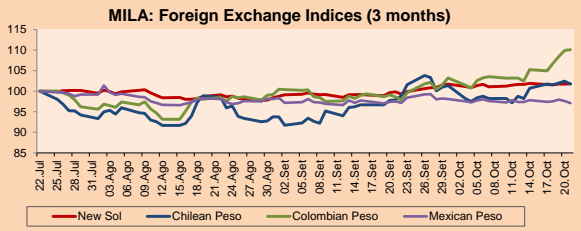
Main Indexes	Close	1 D	5 D	1 M	YTD	Cap. Burs. (US\$ bill)
▲ IPSA (Chile)	5,147.37	0.16%	3.52%	-4.13%	19.47%	93.13
▲ IGPA (Chile)	27,977.11	0.72%	4.89%	-4.34%	29.72%	107.00
▲ COLSC (Colombia)	924.39	0.19%	-1.01%	7.18%	-5.01%	3.26
▲ COLCAP (Colombia)	1,231.64	0.74%	4.58%	2.83%	-12.71%	53.29
▲ S&P/BVL (Perú)*	20,480.39	1.57%	3.75%	4.18%	-2.99%	79.73
▲ S&P/BVL SEL (Perú)	541.47	1.25%	3.26%	5.70%	-3.92%	67.89
▲ S&P/BVL LIMA 25	29,006.15	0.93%	3.09%	2.39%	-4.19%	79.25
▲ IPC (México)	47,120.08	1.74%	3.69%	0.27%	-11.55%	294.56
▲ S&P MILA 40	411.33	1.08%	2.65%	-5.29%	-7.54%	5,871.30

*Legend: Variation 1D: 1 day; 5D: 5 days; 1M: 1 Month; YTD: Var% 12/31/21 to date



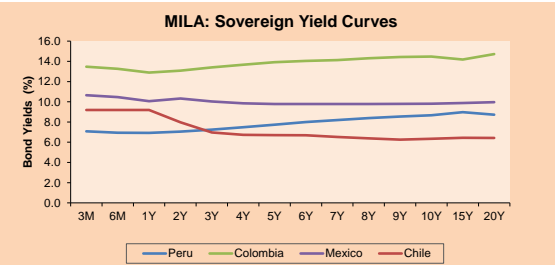
Currency	Price	1D*	5D*	30 D*	YTD*
▲ Sol (PEN)	3,9863	0.11%	-0.09%	1.99%	-0.32%
▲ Chilean Peso (CLP)	971.90	-0.70%	0.96%	3.90%	14.07%
▲ Colombian Peso (COP)	4,915.58	0.18%	4.62%	11.62%	20.47%
▲ Mexican Peso (MXN)	19.93	-0.53%	-0.74%	-0.44%	-2.91%

*Legend: Variation 1D: 1 day; 5D: 5 days; 1M: 1 Month; YTD: Var% 12/31/21 to date



Base: 22/07/22=100
Source: Bloomberg

Fixed Income	Currency	Price	Bid Yield (%)	Ask Yield (%)	Duration
PERU 7.35 07/21/25	USD	103.426	6.05	5.89	2.42
PERU 4.125 08/25/27	USD	92.834	5.90	5.80	4.25
PERU 8.75 11/21/33	USD	116.051	6.72	6.63	7.11
PERU 6.55 03/14/37	USD	97.115	6.92	6.82	8.68
PERU 5.625 11/18/2050	USD	87.865	6.61	6.54	12.75
CHILE 2.25 10/30/22	USD	99.831	27.58	1.10	0.01
CHILE 3.125 01/21/26	USD	92.882	5.71	5.54	2.99
CHILE 3.625 10/30/42	USD	67.868	6.57	6.47	12.40
COLOM 11.85 03/09/28	USD	110.457	9.40	9.25	3.94
COLOM 10.375 01/28/33	USD	103.873	9.88	9.65	6.16
COLOM 7.375 09/18/37	USD	79.688	10.09	9.96	8.08
COLOM 6.125 01/18/41	USD	67.205	10.15	10.03	8.93
MEX 4 10/02/23	USD	67.205	10.15	10.03	8.93
MEX5.55 01/45	USD	82.047	7.21	7.14	11.47



Source: Bloomberg

Equity

Largest gains	Exchange	Currency	Price	▲ %
KIMBERLY-CLA M-A	Mexico	MXN	28.19	6.54
SONDA SA	Chile	CLP	324.72	4.41
CMPC	Chile	CLP	1404.70	4.04
SURAMERICANA	Colombia	COP	41000.00	3.80
SOUTHERN COPPER	Peru	USD	48.40	3.64

Per Turnover

	Exchange	Amount (US\$)
GRUPO F BANORT-O	Mexico	96,908,902
WALMART DE MEXIC	Mexico	77,321,446
AMERICA MOVIL-L	Mexico	68,255,403
ENEL AMERICAS SA	Chile	56,798,796
GRUPO MEXICO-B	Mexico	29,971,790

Largest losses	Exchange	Currency	Price	▼ %
ENTEL	Chile	CLP	2935.9	-5.09
GRUPO NUTRESA SA	Colombia	COP	57990	-5.03
ENEL AMERICAS SA	Chile	CLP	101.98	-3.06
MEGACABLE-CPO	Mexico	MXN	41.27	-2.87
EMPRESAS COPEC	Chile	CLP	6289.8	-2.12

Per Volume

	Exchange	Volume
ENEL AMERICAS SA	Chile	540,077,925
ITAU CORPBANCA	Chile	492,519,492
AMERICA MOVIL-L	Mexico	79,887,316
ENEL CHILE SA	Chile	65,099,056
BANCO DE CHILE	Chile	27,051,170

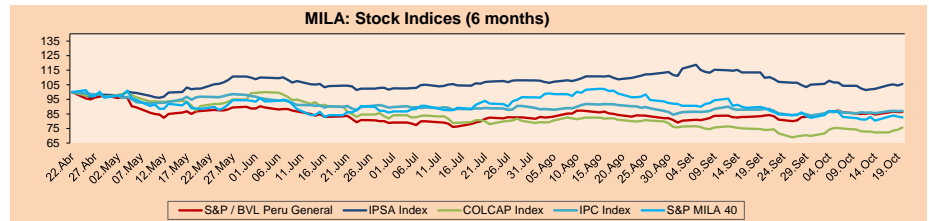
MILA

Peru: The BVL General index ended today's session with a positive result of +1.57%. The index maintains an annual cumulative negative trend of -1.82% in local currency, while the dollar-adjusted performance is -2.66%. Then, the S&P/BVL Peru SEL varied by +1.41% while the S&P/BVL LIMA 25 by +0.93%. The spot PEN reached \$/3.9732. Headline: Peru negotiates with Central American countries to close trade agreements.

Chile: The IPSA index ended the day with a positive return of +0.16%. The most benefited sectors of the session were Information Technology (+4.41%) and Materials (+3.37%). The best performing stocks were Sonda (+4.41%) and Empresas CMPC (+4.04%). Headline: Fuels will rise again this Thursday, except 93 octane gasoline.

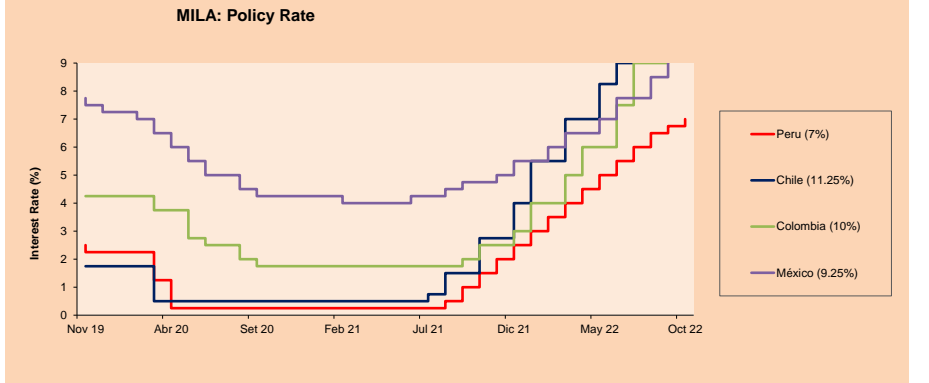
Colombia: The COLCAP index ended the session with a positive return of +0.74%. The most favored sectors of the day were Energy (+2.82%) and Utilities (+1.17%). The best performing stocks were Grupo de INV Sudamericana (+3.80%) and Promigas (+3.30%). Headline: Petro explained if performance contracts will cease to exist.

Mexico: The IPC index closed the day with a positive return of +1.74%. The top gainers of the day were Consumer Staples (+2.24%) and Real Estate (+1.86%). The worst performers were Controladora Vuela (+6.55%) and Kimberly Clark de Mexico (+6.54%). Headline: How much would the peso fall against the dollar if it falls 20% as Moody's estimates?



Base: 25/04/22=100
Source: Bloomberg

ETFs	Curr.	Close	1D	5D	30 D	YTD	Exchange
▲ iShares MSCI All Peru Caped Index Fund	USD	25.73	1.70%	3.46%	1.34%	-13.13%	NYSE Arca
▲ iShares MSCI All Chile Caped Index Fund	USD	24.31	3.23%	5.01%	-6.43%	5.28%	Cboe BZX
▲ Global X MSCI Colombia	USD	-	-	-	-	-	-
▲ iShares MSCI Mexico Capped	USD	47.43	2.48%	4.91%	1.30%	-6.26%	NYSE Arca
▲ iShares MSCI Emerging Markets	USD	35.27	1.53%	3.10%	-4.86%	-27.80%	NYSE Arca
▲ Vanquard FTSE Emerging Markets	USD	36.75	1.46%	3.06%	-4.57%	-25.70%	NYSE Arca
▲ iShares Core MSCI Emerging Markets	USD	43.46	1.35%	2.96%	-4.92%	-27.40%	NYSE Arca
▲ iShares JP Morgan Emerging Markets Bonds	USD	51.35	1.00%	2.89%	-2.19%	-18.28%	Cboe BZX
▲ Morgan Stanley Emerging Markets Domestic	USD	4	1.27%	1.01%	-7.83%	-27.01%	New York



Source: Bloomberg

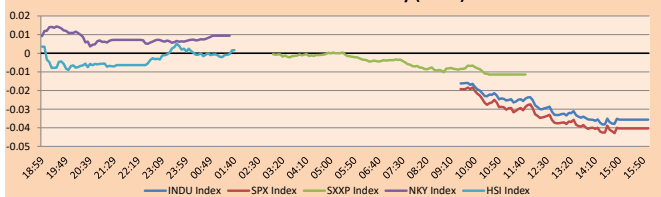
Capital Market Laboratory Coordinator: MS Javier Penny Pestana
Collaboration: Mariela Urrutia, Fedele Calle, Miguel Solimano y Maciel Esquerre
email: pulsobursatil@ulima.edu.pe
facebook: www.facebook.com/pulsobursatil.ul

WORLD

Main Indices	Close	1 D*	5 D*	1 M*	YTD*	Market Cap. (US\$ MILL.)
▲ Dow Jones (USA)	31,082.56	2.47%	4.89%	2.98%	-14.46%	9,365,275
▲ Standard & Poor's 500 (EEUU)	3,752.75	2.37%	4.74%	-0.98%	-21.26%	32,196,966
▲ NASDAQ Composite (USA)	10,859.72	2.31%	5.22%	-3.21%	-30.59%	17,959,480
▼ Stoxx EUROPE 600 (Europe)	396.29	-0.62%	1.27%	1.51%	-18.76%	11,112,693
▼ DAX (Germany)	12,730.90	-0.29%	2.36%	3.64%	-19.86%	1,352,805
▲ FTSE 100 (United Kingdom)	6,969.73	0.37%	1.62%	-0.70%	-5.62%	1,686,845
▼ CAC 40 (France)	6,035.39	-0.85%	1.74%	4.36%	-15.62%	1,992,345
▼ IBEX 35 (Spain)	7,545.60	-1.29%	2.21%	-0.50%	-13.41%	509,244
▼ MSCI AC Asia Pacific Index	135.81	-0.72%	-1.48%	-8.24%	-29.68%	18,815,836
▼ HANG SENG (Hong Kong)	16,211.12	-0.42%	-2.27%	-9.60%	-30.71%	2,465,685
▲ SHANGHAI SE Comp. (China)	3,038.93	0.13%	-1.08%	-1.60%	-16.51%	5,902,434
▲ NIKKEI 225 (Japan)	28,890.58	-0.43%	-0.74%	-0.97%	-6.80%	3,164,535
▲ S&P / ASX 200 (Australia)	6,676.76	-0.80%	-1.21%	1.55%	-10.31%	1,424,296
▼ KOSPI (South Korea)	2,213.12	-0.22%	0.03%	-3.36%	-25.68%	1,171,055

*Legend: Variation 1D: 1 Day; 5D: 5 Days; 1M: 1 Month; YTD: Var.% 12/31/21 to date

Mercado Evolución Intraday (var %)

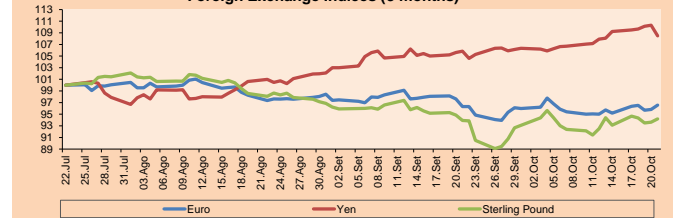


Source: Bloomberg

Currency	Price	1 D*	5 D*	1 M*	YTD*
▲ Euro	0.9862	0.78%	1.44%	0.25%	-13.26%
▼ Yen	147.6500	-1.67%	-0.69%	2.49%	28.30%
▲ Sterling Pound	1.1903	0.61%	1.17%	0.29%	-16.47%
▲ Yuan	7.2306	0.22%	0.53%	2.56%	13.76%
▲ Hong Kong Dollar	7.8495	0.00%	-0.01%	-0.01%	0.68%
▼ Brazilian Real	5.1631	-0.99%	-3.05%	-0.19%	-7.40%
▼ Argentino Peso	153.7927	0.20%	1.40%	6.16%	49.70%

*Legend: Variation 1D: 1 Day; 5D: 5 Days; 1M: 1 Month; YTD: Var.% 12/31/21 to date

Foreign Exchange Indices (3 months)

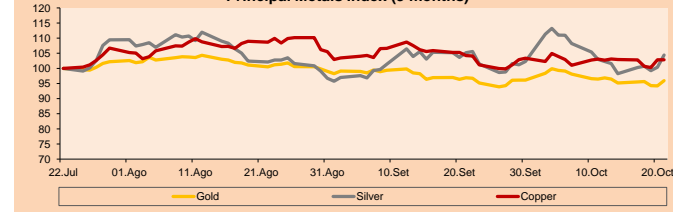


Base: 22/07/22=100
Source: Bloomberg

Commodities	Close	1 D*	5 D*	1 M*	YTD*
▲ Oro (US\$ Oz. T) (LME)	1,657.69	1.82%	0.80%	-0.97%	-9.38%
▲ Plata (US\$ Oz. T) (LME)	19.42	4.02%	6.26%	-0.75%	-16.68%
- Cobre (US\$ TM) (LME)	7,645.50	0.00%	-0.09%	-1.34%	-21.51%
- Zinc (US\$ TM) (LME)	3,011.00	0.00%	1.02%	-3.25%	-16.13%
▲ Petróleo WTI (US\$ Barril) (NYM)	85.05	0.64%	0.47%	3.18%	21.80%
- Estafío (US\$ TM) (LME)	19,320.00	0.00%	-3.37%	-8.98%	-50.93%
- Plomo (US\$ TM) (LME)	2,000.50	0.00%	-3.61%	9.92%	-14.43%
▼ Azúcar #11 (US\$ Libra) (NYB-ICE)	18.38	-0.05%	-2.44%	3.20%	-0.27%
▼ Cacao (US\$ TM) (NYB-ICE)	2,306.00	-0.95%	-2.99%	-1.96%	-9.92%
▼ Café Arábica (US\$ TM) (NYB-ICE)	190.90	-0.08%	-2.95%	-13.74%	-14.45%

*Leyenda: Variación 1D: 1 Día; 5D: 5 Días; 1M: 1 Mes; YTD: Var.% 31/12/21 a la fecha

Principal Metals Index (3 months)



Base: 22/07/22=100
Source: Bloomberg

Equity

Germany (Stocks from DAX Index)

Largest gains	Curr.	Price	▲ %	Exchange	Largest losses	Curr.	Price	▼ %	Exchange
HNR1 GY	EUR	158.8	2.75	Xetra	PUM GY	EUR	43.85	-7.29	Xetra
DB1 GY	EUR	160.75	2.26	Xetra	HEN3 GY	EUR	62.34	-2.07	Xetra
BAS GY	EUR	46.08	1.39	Xetra	PAH3 GY	EUR	57.52	-1.64	Xetra
BAYN GY	EUR	50	0.40	Xetra	MRK GY	EUR	159.8	-1.36	Xetra

Europe (Stocks from STOXX EUROPE 600)

Largest gains	Curr.	Price	▲ %	Exchange	Largest losses	Curr.	Price	▼ %	Exchange
NOD NO	NOK	147.5	4.91	Oslo	ADS GY	EUR	103.86	-9.53	Xetra
NEL NO	NOK	12.05	4.19	Oslo	TOM NO	NOK	154	-8.22	Oslo
MUV2 GY	EUR	258.8	3.69	Xetra	PUM GY	EUR	43.85	-7.29	Xetra
GLEN LN	Gbp	502.1	3.59	Londres	G24 GY	EUR	50.32	-7.26	Xetra

Global Overview:

United States:

The U.S. market closed with positive returns, after a report mentioned that the U.S. Federal Reserve will likely discuss a smaller interest rate hike in December, raising hopes that the central bank may be ready to adopt a less hawkish policy stance. The DOW JONES index closed higher, despite the market starting lower, the trigger for the sharp move higher was a WSJ report showing that some officials are signaling their desire to ensure the pace of the hike soon to gauge the impact of that tightening on growth. Similarly, the S&P500 index had a similar development ending higher, where the market's move came in tandem with the easing of Treasury yields, giving a breather to growth-oriented stocks. Similarly, analysts generally expect the Federal Reserve to raise rates by 75 basis points for the fourth consecutive rate hike in November. Finally, the NASDAQ index ended the session with positive results, amid a backdrop where Snap Inc. slumped after posting its slowest quarterly revenue growth in five years, as advertisers cut spending due to inflation and geopolitical concerns. That hurt other companies that rely heavily on advertising revenue, such as Meta Platforms Inc and Pinterest, which declined. The market closed on expectations of earnings statements from companies such as Twitter, Microsoft Corp, Alphabet and Apple Inc. due next week. Thus, DOW JONES +2.47%, S&P 500 +2.37% and NASDAQ +2.31% ended the day with positive results.

Europe:

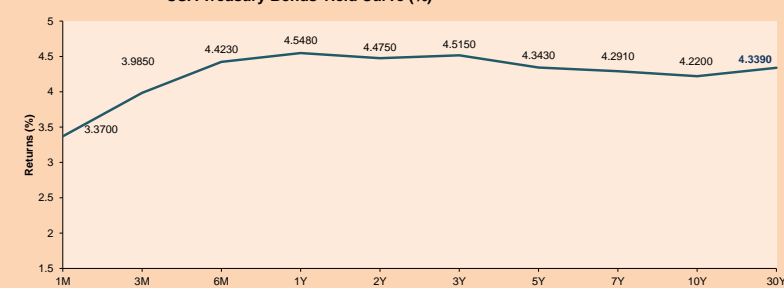
Major European indices ended the session with negative returns as political turmoil continued in the UK following the resignation of Prime Minister Liz Truss. The pan-European STOXX 600 index closed lower on expectations that the world's major central banks will maintain their hawkish stance on inflation, and dismal earnings updates from a number of companies increased concerns about a recession. The UK market, reflected in the FTSE 100, ended with gains, supported by commodity stocks, as hopes that the Federal Reserve will raise interest rates less in the US offset the problems of domestic political uncertainty. Meanwhile, the DAX index closed with negative returns due to the prospects that central banks will raise interest rates again. Next Thursday, the European Central Bank is expected to raise its rate by 75 bps to 1.5% and to reach 3.25% in the summer. Finally, the French market closed lower, where, although multiple companies reported solid quarterly earnings, concerns about monetary policy remain, as the next European Central Bank meeting is next week and the U.S. Federal Reserve meeting is in two weeks. Thus, FTSE 100 +0.37%; CAC 40 -0.85%; DAX -0.29%; STOXX 600 -0.62% ended in negative levels.

Asia:

Major Asian indices closed with negative returns. The Chinese market ended with negative yields amid investors' wait for Communist Party policy news, which will conclude tomorrow. In line, the Hang Seng index closed lower, the lowest level since April 2019, this accompanied by U.S. stock yields ending lower on Thursday and Treasuries hitting their highest yields. The South Korean market ended with losses, in a context where China is evaluating the possibility of reducing quarantine in certain regions, however, analysts indicate that it would not have a significant effect. The Japanese market closed lower, with inflationary pressures forcing the central bank to further modify interest rates. This, together with rising bond yields, led to losses in Japanese stocks on Wall Street. It is worth mentioning a significant increase in the number of COVID-19 cases along with the opening of foreign visitors to the country. The Australian market ended with negative returns, where stock returns have been affected by interest rate expectations in the US. Thus, NIKKEI -0.43%; HANG SENG -0.42%; CSI 300 -0.32%; S&P/ASX 200 -0.80%; KOSPI -0.86%; SHANGHAI COMPOSITE +0.13% ended with mostly negative returns.

ETFs	Curr.	Close	1D	5D	30 D	YTD	Exchange
SPDR S&P 500 ETF TRUST	USD	374.29	2.43%	4.66%	-0.82%	-21.20%	NYSE Arca
ISHARES MSCI EMERGING MARKET	USD	35.27	1.53%	3.10%	-4.86%	-27.80%	NYSE Arca
ISHARES IBOXX HIGH YLD CORP	USD	72.49	0.96%	1.37%	-1.37%	-16.69%	NYSE Arca
FINANCIAL SELECT SECTOR SPDR	USD	32.19	2.98%	3.81%	0.31%	-17.57%	NYSE Arca
VANECK GOLD MINERS ETF	USD	24.34	5.00%	7.13%	2.14%	-24.01%	NYSE Arca
ISHARES RUSSELL 2000 ETF	USD	172.70	2.17%	3.53%	-1.51%	-22.36%	NYSE Arca
SPDR GOLD SHARES	USD	154.15	1.78%	0.76%	-1.05%	-9.83%	NYSE Arca
ISHARES 20+ YEAR TREASURY BO	USD	93.17	-1.80%	-5.48%	-13.76%	-37.13%	NASDAQ GM
INVESTCO QQQ TRUST SERIES 1	USD	275.42	2.34%	5.63%	-2.87%	-30.77%	NASDAQ GM
ISHARES BIOTECHNOLOGY ETF	USD	120.90	2.82%	1.10%	2.54%	-20.78%	NASDAQ GM
ENERGY SELECT SECTOR SPDR	USD	86.93	2.89%	8.28%	14.43%	56.63%	NYSE Arca
PROSHARES ULTRA VIX ST FUTUR	USD	12.07	-0.66%	-8.14%	10.53%	-2.90%	Cboe BZX
UNITED STATES OIL FUND LP	USD	70.57	0.56%	0.57%	2.75%	29.82%	NYSE Arca
ISHARES MSCI BRAZIL ETF	USD	34.09	3.74%	11.37%	9.12%	21.45%	NYSE Arca
SPDR S&P OIL & GAS EXP & PR	USD	147.59	2.24%	7.24%	12.44%	53.95%	NYSE Arca
UTILITIES SELECT SECTOR SPDR	USD	63.31	1.85%	1.87%	-13.11%	-11.55%	NYSE Arca
ISHARES US REAL ESTATE ETF	USD	78.87	0.69%	2.47%	-10.18%	-32.09%	NYSE Arca
SPDR S&P BIOTECH ETF	USD	78.84	2.76%	1.31%	-0.37%	-29.58%	NYSE Arca
ISHARES IBOXX INVESTMENT GRA	USD	99.48	0.28%	-0.90%	-6.69%	-24.93%	NYSE Arca
ISHARES JP MORGAN USD EMERGI	USD	77.94	1.10%	0.18%	-6.64%	-28.53%	NASDAQ GM
REAL ESTATE SELECT SECT SPDR	USD	34.67	0.70%	2.67%	-9.45%	-33.08%	NYSE Arca
ISHARES CHINA LARGE-CAP ETF	USD	23.92	0.63%	-0.99%	-11.83%	-34.61%	NYSE Arca
CONSUMER STAPLES SPDR	USD	68.91	1.53%	2.04%	-2.50%	-10.63%	NYSE Arca
VANECK JUNIOR GOLD MINERS	USD	29.85	5.85%	7.57%	2.12%	-28.81%	NYSE Arca
SPDR BLOOMBERG HIGH YIELD BO	USD	88.77	0.75%	1.17%	-2.00%	-18.24%	NYSE Arca
VANGUARD REAL ESTATE TRF	USD	78.15	0.79%	2.64%	-9.74%	-32.64%	NYSE Arca
GRAYSCALE BITCOIN TRUST BTC	USD	11.42	1.33%	2.33%	-2.06%	-66.66%	OTC US

USA Treasury Bonds Yield Curve (%)



Source: Bloomberg

Capital Market Laboratory Coordinator: MS Javier Penny Pestana
Collaboration: Mariafe Urrutia, Fedele Calle, Miguel Solimano y Maciel Esquerre
email: pulsohorsatil@ulima.edu.pe
facebook: www.facebook.com/pulsohorsatil.ul

LIMA

Stocks

Ticker	Currency	Price	1D*	5D*	30D*	YTD*	Frequency	Volume (US\$)	Beta	Dividend Yield (%)	Price Earning	Market Cap. (M US\$)	Economic Sector*	Index Weight
▲ ALICORC1 PE**	S/.	6.11	0.19%	-1.01%	7.18%	-5.01%	100.00%	165,772	0.82	4.09	10.33	1,306.32	Industrial	3.53%
▲ ATACOBC1 PE**	S/.	-	-	-	-	-	5.00%	5	-	0.00	-	-	Mining	1.02%
▲ BACKUSI1 PE**	S/.	24.25	15.31%	10.18%	11.03%	18.29%	80.00%	2,700,775	0.77	14.15	7.54	7,837.19	Industrial	0.82%
▲ BAP PE**	US\$	133.15	1.64%	4.84%	0.87%	7.57%	100.00%	1,561,496	1.23	3.01	-	10,588.09	Diverse	5.82%
▲ BVN PE**	US\$	6.70	3.08%	6.52%	7.89%	-8.22%	100.00%	68,038	1.56	1.04	-	1,846.75	Mining	5.88%
▲ CASAGRC1 PE**	S/.	9.00	3.45%	3.45%	6.89%	-1.10%	100.00%	37,731	1.23	60.02	5.97	190.18	Agricultural	1.31%
▲ BBVAC1 PE**	S/.	1.52	0.66%	-3.80%	1.33%	-8.43%	90.00%	6,512	0.68	6.95	5.66	2,814.87	Finance	2.85%
▲ CORAREI1 PE**	S/.	1.44	1.41%	9.09%	0.00%	-16.28%	90.00%	65,016	0.92	12.95	2.91	494.97	Industrial	1.72%
- CPACASC1 PE**	S/.	4.20	0.00%	0.24%	9.09%	-15.15%	90.00%	21,289	0.81	0.00	11.67	482.97	Industrial	2.38%
- CVERDEC1 PE**	US\$	30.00	0.00%	5.23%	7.14%	-19.42%	100.00%	90,090	0.94	6.19	8.88	10,501.68	Mining	5.25%
▲ ENGEPEC1 PE**	S/.	2.65	1.15%	1.15%	-0.38%	-6.69%	90.00%	297,395	0.80	16.87	6.40	1,161.93	Public Services	1.44%
▲ ENDISPC1**	S/.	4.00	1.01%	4.99%	1.27%	0.00%	55.00%	10,059	0.82	5.18	6.56	640.76	Public Services	0.98%
▼ FERREYU1 PE**	S/.	2.23	-0.89%	-0.89%	0.45%	8.78%	100.00%	120,354	0.90	11.65	4.50	529.24	Diverse	4.90%
- AENZAC1 PE**	S/.	0.72	0.00%	2.86%	-6.49%	-47.45%	50.00%	171	1.05	0.00	-	216.20	Diverse	4.05%
▲ IFS PE**	US\$	22.12	0.96%	8.43%	3.61%	-17.62%	90.00%	16,741	0.84	10.85	6.95	2,553.05	Diverse	7.22%
▼ INRETC1 PE**	US\$	34.50	-0.43%	4.01%	8.49%	-1.29%	100.00%	4,831	0.85	3.97	22.59	3,751.77	Diverse	5.28%
▼ LUSURC1 PE**	S/.	13.80	-0.72%	-1.43%	-10.21%	-3.09%	85.00%	100,167	0.00	5.54	11.31	1,685.76	Public Services	1.81%
▼ MINSUR1 PE**	S/.	3.56	-3.78%	-2.47%	-14.01%	-9.87%	85.00%	28,012	1.09	20.44	1.21	2,574.69	Mining	3.09%
- PML PE**	US\$	0.09	0.00%	0.00%	12.50%	-25.00%	25.00%	7,160	#N/A N/A	0.00	-	22.47	Mining	2.12%
▲ SCCO PE**	US\$	48.40	3.64%	2.87%	5.47%	-21.66%	90.00%	109,188	1.10	8.26	11.83	37,417.68	Industrial	2.12%
▲ SIDERC1 PE**	S/.	1.67	7.74%	13.61%	7.74%	4.38%	70.00%	61,708	0.75	24.87	4.04	293.25	Mining	2.14%
▲ TV PE**	US\$	-	-	-	-	-	0.00%	-	1.28	0.00	-	-	Industrial	1.43%
- UNACEMC1 PE**	S/.	1.73	0.00%	1.17%	8.12%	-27.92%	85.00%	456	1.03	0.00	-	789.04	Mining	2.93%
- VOLCABC1 PE**	S/.	0.52	0.00%	1.96%	-16.13%	-13.33%	100.00%	82,052	1.44	0.00	10.45	531.78	Industrial	3.00%
- BROCALC1 PE**	S/.	5.20	0.00%	-2.07%	5.91%	0.00%	35.00%	1,135	0.00	0.00	36.71	210.83	Mining	5.90%
▲ RIMSEGC1 PE**	S/.	-	-	-	0.00%	-	0.00%	941	0.00	0.00	-	-	Finance	3.09%
- CORAREC1 PE**	US\$	1.92	0.00%	0.00%	0.00%	1.05%	30.00%	4,512	0.00	0.00	3.88	1,973.11	Mining	2.12%
- ENGIEC1 PE**	S/.	5.00	0.00%	-0.40%	-7.41%	-14.68%	40.00%	20,238	#N/A N/A	5.02	15.33	754.30	Diversas	2.12%
▲ GBVLAC1 PE**	S/.	2.35	2.17%	2.17%	-2.89%	-13.60%	25.00%	2,974	0.00	8.63	-	107.35	Diversas	2.14%

Quantity of shares: 26
 Source: Bloomberg, Económica
 * Bloomberg Industry Classification System
 ** PER is used in the stock market and original currency of the instrument
 *Legend: Variation 1D: 1 Day; 5D: 5 Days, 1M: 1 Month; YTD: Var.% 12/31/21 to date

Up 16
 Down 4
 Hold 6

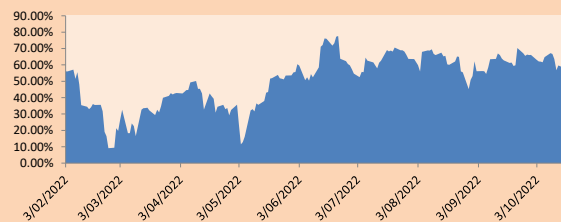
Sectorial Indices

	Close	1D*	5D*	30D*	YTD*	Beta
▲ S&P/BVLMining	344.55	2.62%	3.33%	5.86%	-16.29%	1.19
▲ S&P/BVLConsumer	1,240.13	2.53%	4.72%	8.02%	8.03%	0.60
▼ S&P/BVLIndustrials	236.43	-0.10%	0.79%	3.18%	-8.39%	0.73
▲ S&P/BVLFinancials	976.52	1.60%	4.74%	2.99%	7.77%	1.20
▲ S&P/BVLConstruction	229.55	0.29%	1.62%	4.55%	-19.00%	0.68
▲ S&P/BVLPublicSvcs	600.48	0.55%	1.07%	-3.69%	9.48%	0.14
▲ S&P/BVLElectricUtil	586.22	0.55%	1.07%	-3.69%	9.48%	0.14

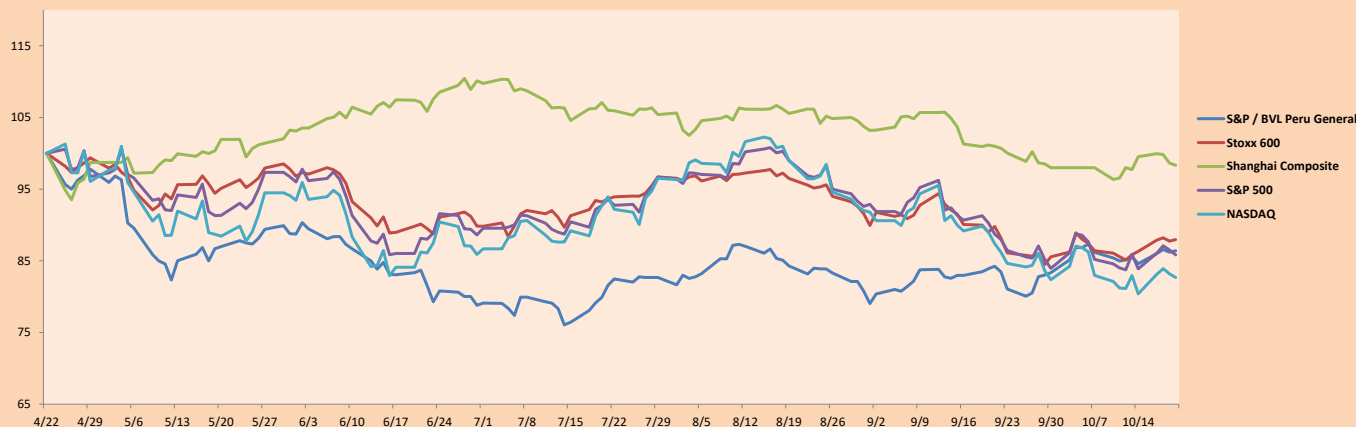
S&P/BVLConstructionTRPEN

*Legend: Variation 1D: 1 Day; 5D: 5 Days, 1M: 1 Month; YTD: Var.% 12/31/21 to date

Correlation Graph of Returns of Mining Index against Metallic Index of London (3 months)



Indices (6 months)



Base: 22/04/22=100
 Source: Bloomberg

Capital Market Laboratory Coordinator: MS Javier Penny Pestana
 Collaboration: Mariafe Urrutia, Fedele Calle, Miguel Solimano y Maciell Esquerre
 email: pulsobursatil@ulima.edu.pe
 facebook: www.facebook.com/pulsobursatil.ul

SOVEREIGN RATING

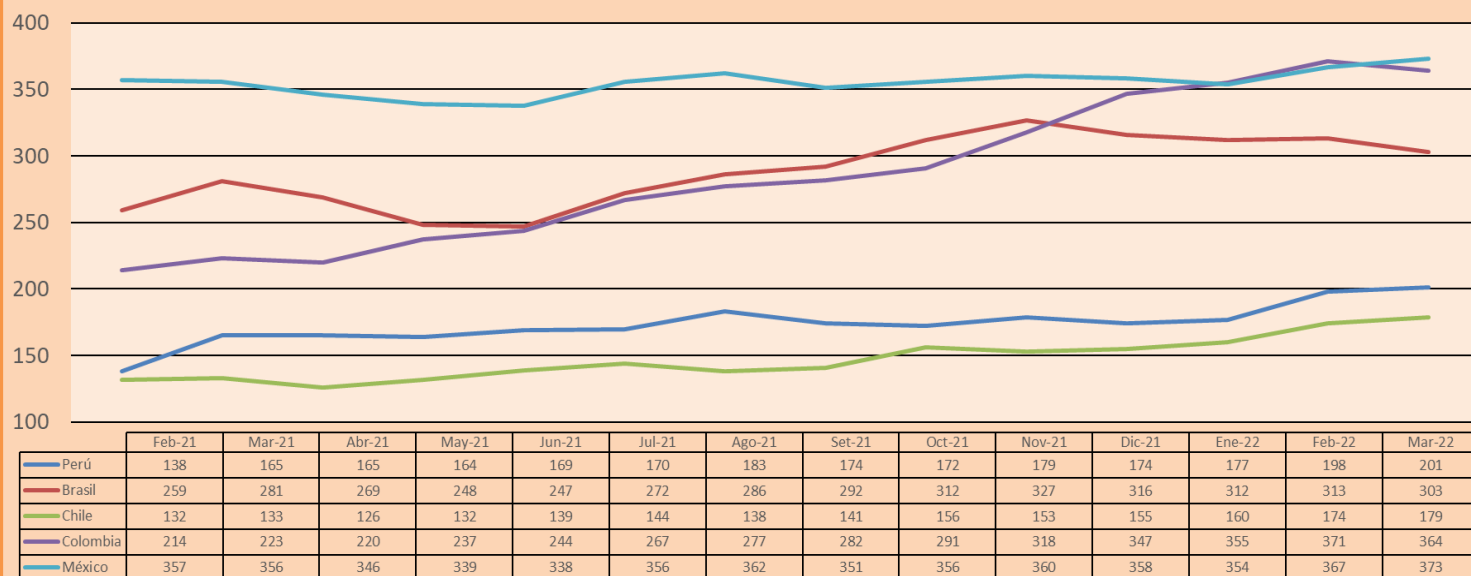
RISK RATINGS			
Moody's	S&P	Fitch	
Aaa	AAA	AAA	Prime
Aa1	AA+	AA+	High credit quality
Aa2	AA	AA	
Aa3	AA-	AA-	
A1	A+	A+	Medium-high grade, with low credit risk
A2	A	A	
A3	A-	A-	
Baa1	BBB+	BBB+	Moderate Credit Risk
Baa2	BBB	BBB	
Baa3	BBB-	BBB-	
Ba1	BB+	BB+	It has speculative elements and it is subject to substantial credit risk
Ba2	BB	BB	
Ba3	BB-	BB-	
B1	B+	B+	It is considered speculative and it has high credit risk
B2	B	B	
B3	B-	B-	
Caa1	CCC+		Bad credit conditions and it is subject to high credit risk
Caa2	CCC		
Caa3	CCC-		
Ca	C	CCC	Very close to default or in default
		DD	
C	D	DD	

Source: Bloomberg

Latin America Credit Rating			
Clasificadora de riesgo			
Country	Moody's	Fitch	S&P
Peru	Baa1	BBB	BBB
México	Ba2	BB-	BB-
Venezuela	C	WD	NR
Brazil	Ba2	BB-	BB-
Colombia	Baa2	BB+	BB+
Chile	A2	A-	A
Argentina	Ca	WD	CCC+
Panama	Baa2	BBB-	BBB

Source: Bloomberg

LATAM Country Risk(bps)



Source: BCRP

Capital Market Laboratory Coordinator: MS Javier Penny Pestana
Collaboration: Mariáfe Urrutia, Fedele Calle, Miguel Solimano y Maciell Esquerre
email: pulsobursatil@ulima.edu.pe
facebook: www.facebook.com/pulsobursatil.ul