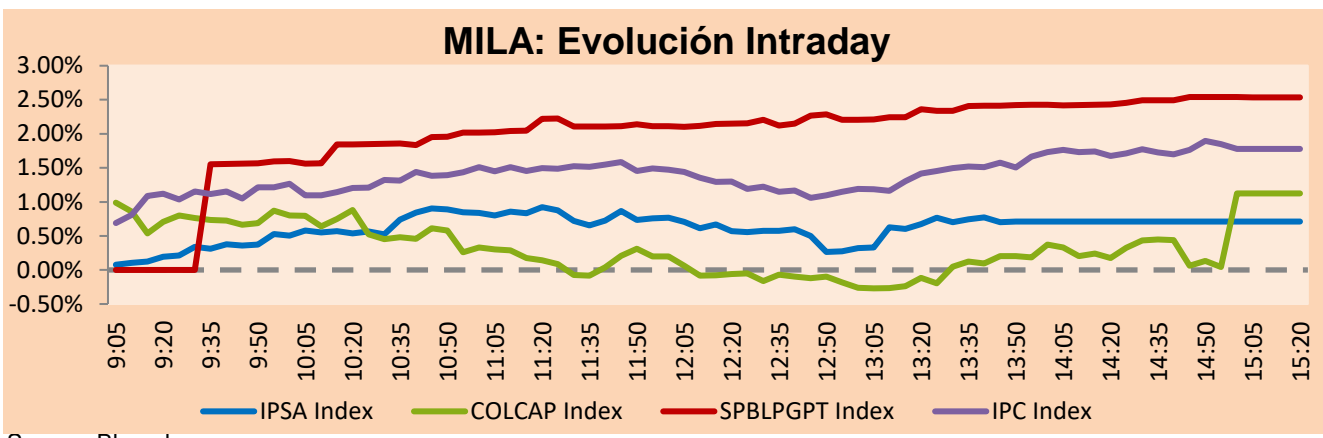


## MILA

Lima, October 25, 2022

Main Indexes	Close	1 D	5 D	1 M	YTD	Cap. Burs. (US\$ bill)
▲ IPSA (Chile)	5,164.31	1.10%	0.81%	-0.82%	19.87%	92.61
▲ IGPA (Chile)	28,145.88	1.34%	1.74%	0.18%	30.51%	106.61
▼ COLSC (Colombia)	899.31	-0.63%	-3.13%	3.10%	-7.59%	3.19
▲ COLCAP (Colombia)	1,209.12	1.12%	1.71%	4.48%	-14.31%	51.84
▲ S&P/BVL (Perú)*	20,735.49	2.53%	2.63%	9.59%	-1.78%	79.29
▲ S&P/BVL SEL (Perú)	543.35	1.72%	1.64%	9.85%	-3.59%	66.89
▲ S&P/BVL LIMA 25	29,215.19	1.94%	2.14%	6.59%	-3.50%	78.80
▲ IPC (México)	48,641.27	1.83%	5.04%	7.15%	-8.69%	303.12
▲ S&P MILA 40	411.02	2.86%	1.10%	0.50%	-7.60%	6,026.00

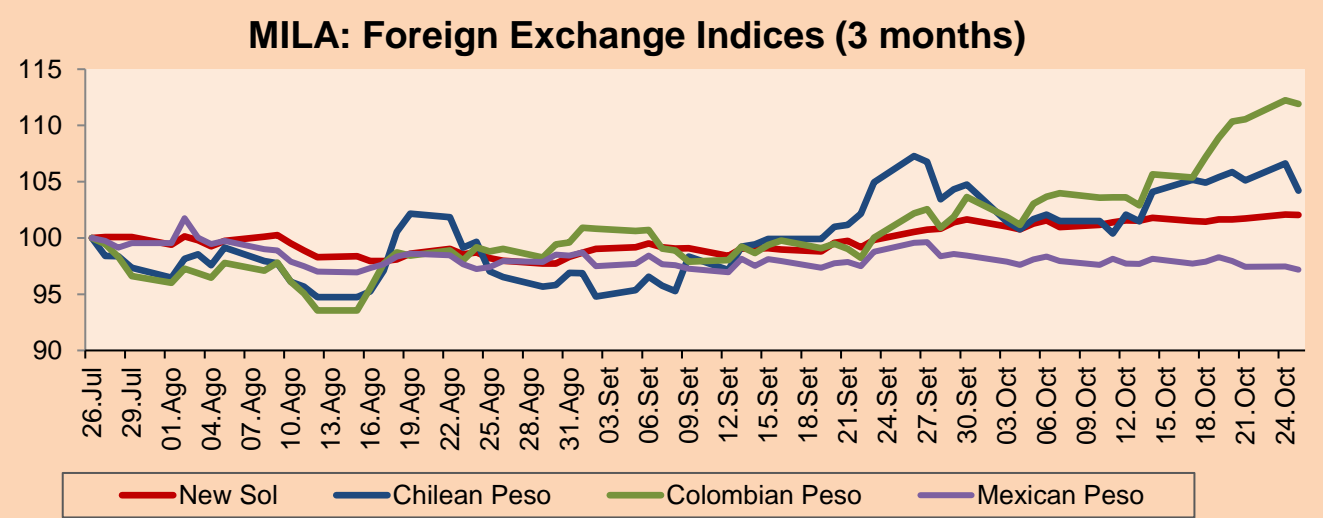
\*Legend: Variation 1D: 1 day; 5D: 5 days; 1M: 1 Month; YTD: Var% 12/31/21 to date



Source: Bloomberg

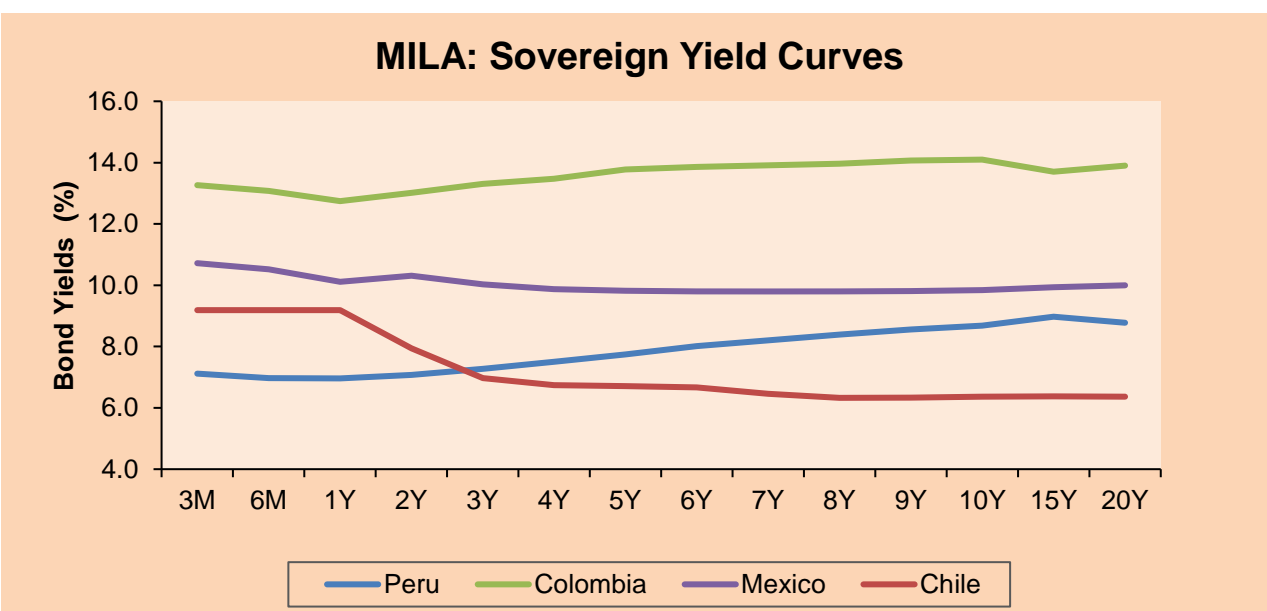
Currency	Price	1D*	5D*	30 D*	YTD*
▼ Sol (PEN)	3,999.2	-0.03%	0.56%	2.23%	0.00%
▼ Chilean Peso (CLP)	963.58	-2.26%	-0.69%	-0.72%	13.10%
▼ Colombian Peso (COP)	4,976.25	-0.29%	4.41%	11.88%	21.96%
▼ Mexican Peso (MXN)	19.88	-0.29%	-0.75%	-1.63%	-3.17%

\*Legend: Variation 1D: 1 day; 5D: 5 days; 1M: 1 Month; YTD: Var% 12/31/21 to date



Base: 26/07/22=100  
Source: Bloomberg

Fixed Income	Currency	Price	Bid Yield (%)	Ask Yield (%)	Duration
PERU 7.35 07/21/25	USD	104.08	5.81	5.61	2.41
PERU 4.125 08/25/27	USD	93.929	5.63	5.52	4.24
PERU 8.75 11/21/33	USD	117.936	6.50	6.41	7.12
PERU 6.55 03/14/37	USD	99.198	6.68	6.59	8.69
PERU 5.625 11/18/2050	USD	90.345	6.39	6.34	12.74
CHILE 2.25 10/30/22	USD	99.954	34.59	-18.98	0.01
CHILE 3.125 01/21/26	USD	93.368	5.47	5.30	2.99
CHILE 3.625 10/30/42	USD	69.882	6.34	6.24	12.45
COLOM 11.85 03/09/28	USD	112.694	8.90	8.75	3.94
COLOM 10.375 01/28/33	USD	105.78	9.63	9.33	6.16
COLOM 7.375 09/18/37	USD	82.83	9.63	9.49	8.11
COLOM 6.125 01/18/41	USD	69.768	9.75	9.63	8.99
MEX 4 10/02/23	USD	69.768	9.749	9.626	8.99
MEX5.55 01/45	USD	84.333	6.97	6.91	11.52



Source: Bloomberg

### Equity

Largest gains	Exchange	Currency	Price	▲%	Largest losses	Exchange	Currency	Price	▼%
BUENAVENTURA-ADR	Peru	USD	6.80	5.43	AERO DEL SURES-B	Mexico	MXN	439.85	-2.35
ENGIE ENERGIA CH	Chile	CLP	518.00	4.65	CMPC	Chile	CLP	1425	-2.26
CREDICORP LTD	Peru	USD	138.70	4.29	CAP	Chile	CLP	5340	-1.71
GRUMA SAB-B	Mexico	MXN	225.20	4.26	INDUSTRIAS PENOL	Mexico	MXN	209.98	-1.51
KIMBERLY-CLA M-A	Mexico	MXN	29.97	4.17	BOLSA MEXICANA	Mexico	MXN	35.52	-1.42

Per Turnover	Exchange	Amount (US\$)	Per Volume	Exchange	Volume
AMERICA MOVIL-L	Mexico	103,892,030	ITAU CORPBANCA	Chile	400,896,111
WALMART DE MEXIC	Mexico	98,726,634	AMERICA MOVIL-L	Mexico	115,801,969
GRUPO F BANORT-O	Mexico	80,892,825	ENEL CHILE SA	Chile	60,050,516
FOMENTO ECON-UBD	Mexico	33,724,512	BANCO SANTANDER	Chile	57,993,863
SOQUIMICH-B	Chile	30,397,860	ENEL AMERICAS SA	Chile	39,806,527

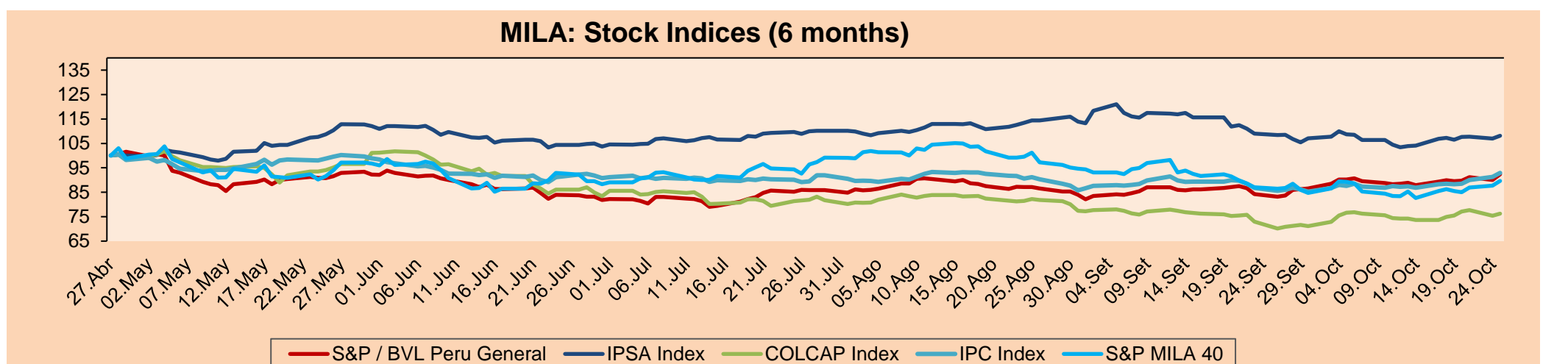
### MILA

Peru: The BVL General index ended today's session with a positive result of +2.53%. The index maintains a negative cumulative annual trend of -1.78% in local currency and a negative cumulative trend of -1.78% in dollar-adjusted currency. With respect to the S&P/BVL Peru SEL, it varied by +1.70% while the S&P/BVL LIMA 25 by +1.25%. The spot PEN reached S/.3.9992. Headline: BCR says Peru is in "neutral economic cycle". What does it mean for the pockets?

Chile: The IPSA index ended the day with a positive return of +1.10%. The sectors that benefited the most during the day were Energy (+3.57%) and Non-Basic Consumer Products (+1.86%). The best performing stocks were Engie Energia Chile SA (+4.65%) and Empresas COPEC SA (+3.57%). Headline: S&P analyst after maintaining the note: "Chile's fiscal performance is not seen anywhere else in the region".

Colombia: The COLCAP index ended the session with a positive return of +1.12%. The most favored sectors of the day were Utilities (+2.05%) and Financials (+1.45%). The best performing stocks were BanColombia (+5.25%) and Cementos Argos SA (+3.23%). Headline: The Colombian dollar continues to 'stalk' the 5,000 pesos mark.

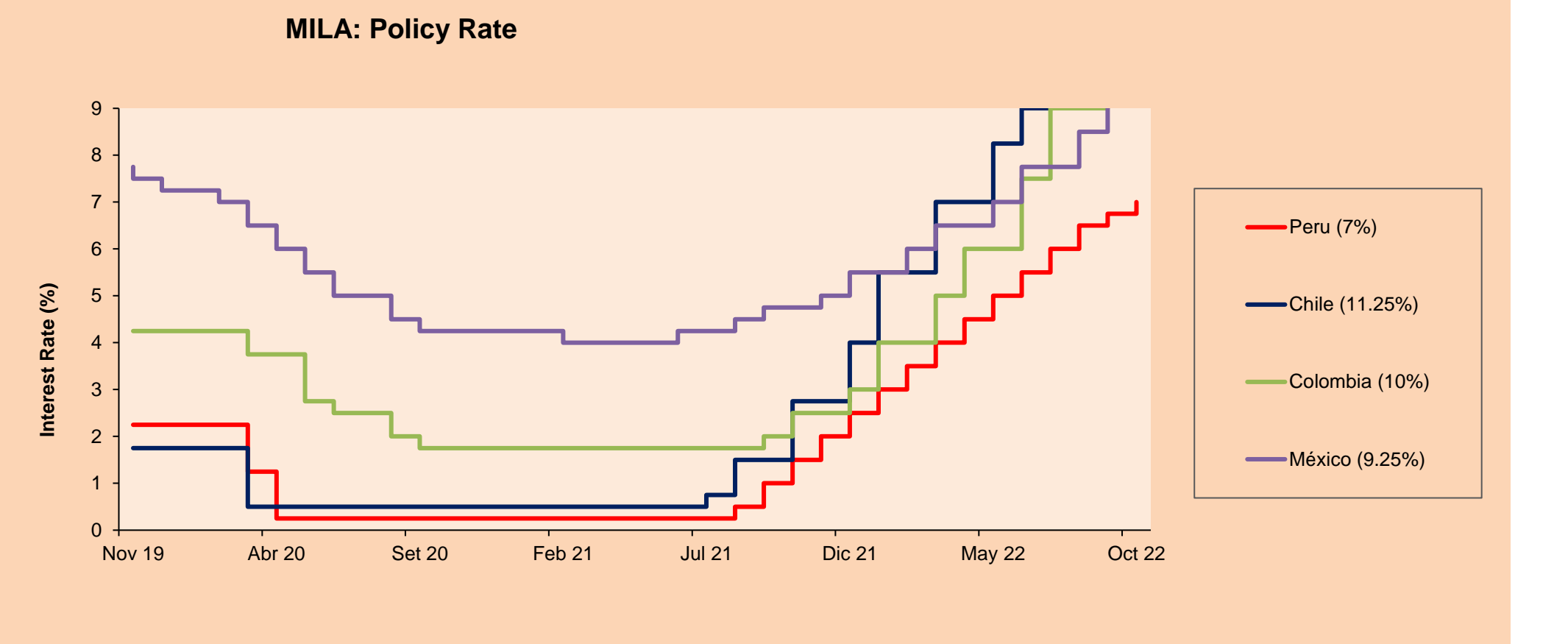
Mexico: The IPC index closed the day in positive territory, +1.83%. The most benefited sectors of the day were Real Estate (+3.76%) and Materials (+2.95%). The best performing stocks were Regional SAB de CV (+4.85%) and Operadora De Sites Mexicanos (+4.44%). Headline: Economic activity in Mexico advanced 0.97% in August, its best growth in 4 months.



Base: 28/04/22=100  
Source: Bloomberg

### ETFs

ETFs	Curr.	Close	1D	5D	30 D	YTD	Exchange
▲ iShares MSCI All Peru Caped Index Fund	USD	25.82	1.61%	1.57%	8.49%	-12.83%	NYSE Arca
▲ iShares MSCI All Chile Caped Index Fund	USD	24.53	3.72%	2.51%	0.00%	6.24%	Cboe BZX
▲ iShares MSCI Mexico Capped	USD	49.04	2.04%	5.99%	9.17%	-3.08%	NYSE Arca
▲ iShares MSCI Emerging Markets	USD	34.21	0.83%	-2.70%	-4.92%	-29.97%	NYSE Arca
▲ Vanguard FTSE Emerging Markets	USD	35.61	0.82%	-2.65%	-5.09%	-28.00%	NYSE Arca
▲ iShares Core MSCI Emerging Markets	USD	42.35	1.05%	-2.31%	-4.55%	-29.25%	NYSE Arca
▲ iShares JP Morgan Emerging Markets Bonds	USD	50.81	1.01%	-0.04%	-1.26%	-19.12%	Cboe BZX
▲ Morgan Stanley Emerging Markets Domestic	USD	4.11	2.49%	2.75%	-3.29%	-25.00%	New York



Source: Bloomberg

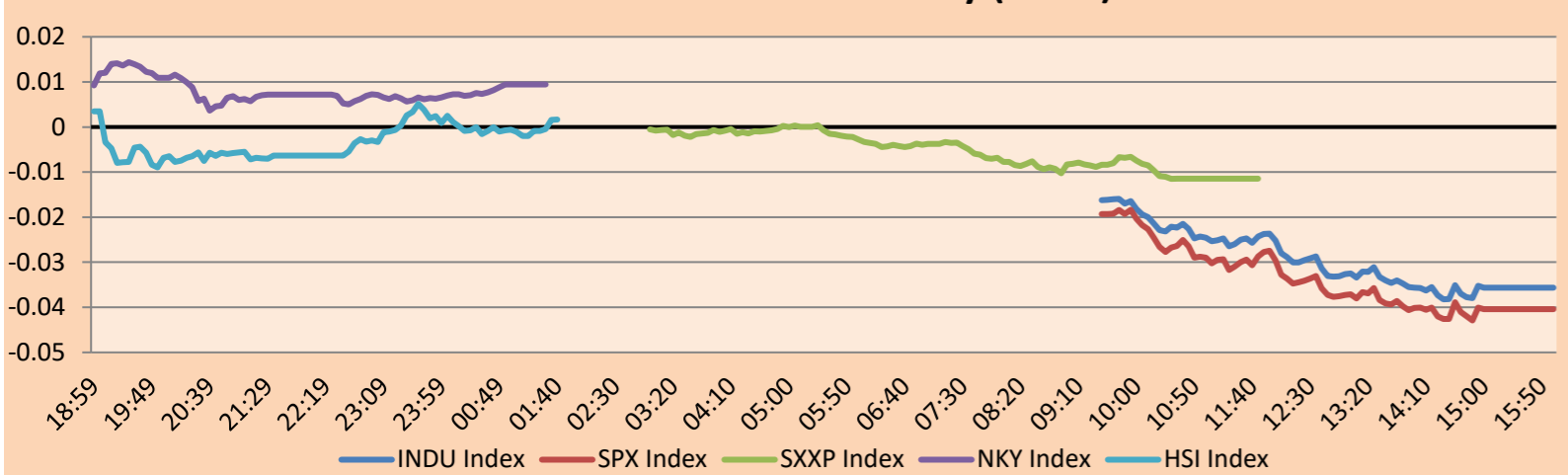


## WORLD

Main Indices	Close	1 D*	5 D*	1 M*	YTD*	Market Cap. (US\$ Mill.)
▲ Dow Jones (USA)	31,836.74	1.07%	4.30%	7.59%	-12.39%	9,727,988
▲ Standard & Poor's 500 (EEUU)	3,859.11	1.63%	3.74%	4.49%	-19.03%	33,348,597
▲ NASDAQ Composite (USA)	11,199.12	2.25%	3.96%	3.05%	-28.42%	18,507,962
▲ Stoxx EUROPE 600 (Europe)	407.61	1.44%	1.94%	4.85%	-16.44%	11,307,384
▲ DAX (Germany)	13,052.96	0.94%	2.25%	6.75%	-17.83%	1,371,571
▼ FTSE 100 (United Kingdom)	7,013.48	-0.01%	1.11%	-0.11%	-5.02%	1,673,018
▲ CAC 40 (France)	6,250.55	1.94%	3.03%	8.34%	-12.62%	2,043,216
▲ IBEX 35 (Spain)	7,794.90	1.49%	2.41%	3.81%	-10.55%	520,598
▲ MSCI AC Asia Pacific Index	135.46	0.86%	-2.48%	-7.44%	-30.46%	18,391,913
▼ HANG SENG (Hong kong)	15,165.59	-0.10%	-10.34%	-15.06%	-35.18%	2,297,752
▼ SHANGHAI SE Comp. (China)	2,976.28	-0.04%	-3.40%	-2.46%	-18.23%	5,751,776
▲ NIKKEI 225 (Japan)	27,250.28	1.02%	0.35%	3.10%	-5.35%	3,208,216
▲ S&P / ASX 200 (Australia)	6,798.62	0.28%	0.29%	5.09%	-8.68%	1,452,803
▼ KOSPI (South Korea)	2,235.07	-0.05%	-0.66%	0.64%	-24.94%	1,188,367

\*Legend: Variation 1D: 1 Day; 5D: 5 Days; 1M: 1 Month; YTD: Var.% 12/31/21 to date

### Mercado Evolución Intraday (var %)

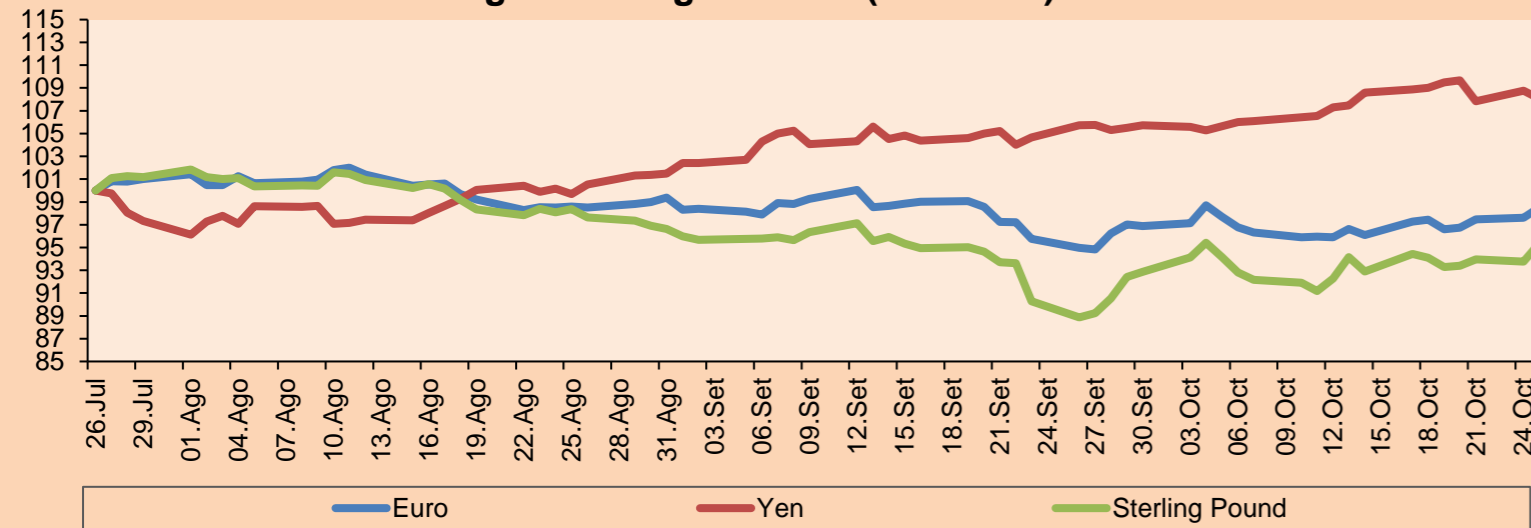


Source: Bloomberg

Currency	Price	1 D*	5 D*	1 M*	YTD*
▲ Euro	0.9966	0.93%	1.10%	2.88%	-12.35%
▼ Yen	147.9300	-0.66%	-0.89%	3.22%	28.55%
▲ Sterling Pound	1.1472	1.72%	1.34%	5.65%	-15.22%
▲ Yuan	7.2687	0.08%	0.92%	1.97%	14.36%
▲ Hong Kong Dollar	7.8500	0.00%	0.01%	0.01%	0.68%
▲ Brazilian Real	5.3175	0.28%	1.46%	1.05%	-4.63%
▲ Argentine Peso	155.0750	0.22%	1.47%	6.62%	50.95%

\*Legend: Variation 1D: 1 Day; 5D: 5 Days; 1M: 1 Month; YTD: Var.% 12/31/21 to date

### Foreign Exchange Indices (3 months)

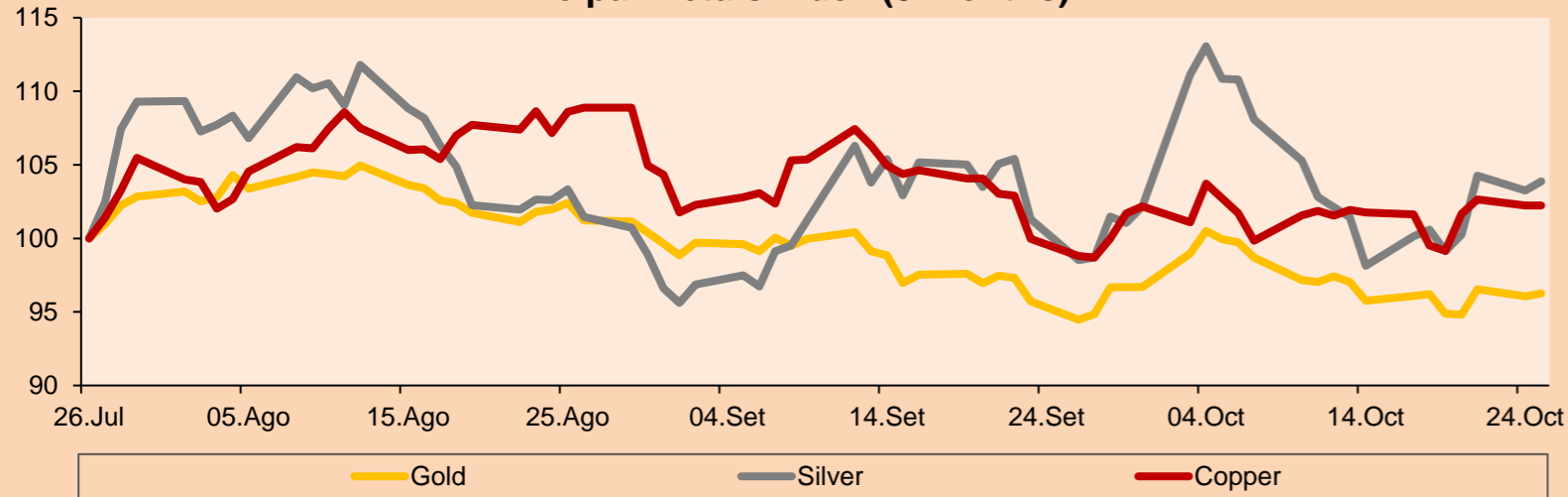


Base: 26/07/22=100  
Source: Bloomberg

Commodities	Close	1 D*	5 D*	1 M*	YTD*
▲ Oro (US\$ Oz. T) (LME)	1,653.17	0.21%	0.06%	0.56%	-9.62%
▲ Plata (US\$ Oz. T) (LME)	19.35	0.60%	3.27%	2.53%	-16.99%
- Cobre (US\$ TM) (LME)	7,689.00	0.00%	2.75%	2.27%	-21.06%
- Zinc (US\$ TM) (LME)	3,011.25	0.00%	4.58%	-0.30%	-16.12%
▲ Petróleo WTI (US\$ Barril) (NYM)	85.32	0.87%	3.96%	9.04%	22.18%
- Estaño (US\$ TM) (LME)	18,456.00	0.00%	-4.94%	-8.91%	-53.13%
- Plomo (US\$ TM) (LME)	1,904.00	0.00%	-7.10%	6.52%	-18.55%
▼ Azúcar #11 (US\$ Libra) (NYB-ICE)	18.11	-0.11%	-3.00%	2.66%	-1.74%
▼ Cacao (US\$ TM) (NYB-ICE)	2,296.00	-1.75%	-0.39%	2.18%	-10.31%
▼ Café Arábica (US\$ TM) (NYB-ICE)	185.80	-2.42%	-4.77%	-15.72%	-16.74%

\*Leyenda: Variación 1D: 1 Día; 5D: 5 Días; 1M: 1 Mes; YTD: Var.% 31/12/21 a la fecha

### Principal Metals Index (3 months)



Base: 26/07/22=100  
Source: Bloomberg

## Equity

Germany (Stocks from DAX Index)

Largest gains	Curr.	Price	▲%	Exchange	Largest losses	Curr.	Price	▼%	Exchange
FME GY	EUR	28.24	2.88	Xetra	LIN GY	EUR	286.65	-3.45	Xetra
DPW GY	EUR	35.59	2.64	Xetra	ADS GY	EUR	100.5	-3.20	Xetra
IFX GY	EUR	26.275	2.52	Xetra	BAS GY	EUR	45.945	-1.40	Xetra
DTG GY	EUR	26.32	2.39	Xetra	MTX GY	EUR	174.25	-0.83	Xetra

Europe (Stocks from STOXX EUROPE 600)

Largest gains	Curr.	Price	▲%	Exchange	Largest losses	Curr.	Price	▼%	Exchange
LOGN SE	CHF	51.18	12.48	SIX Swiss Ex	ALFA SS	SEK	259.3	-10.59	Stockholm
UMG NA	EUR	21.095	11.59	EN Amsterdam	WRT1V FH	EUR	6.762	-7.24	Helsinki
TKWY NA	EUR	16.836	11.54	EN Amsterdam	SKFB SS	SEK	157.85	-6.98	Stockholm
WALLB SS	SEK	40.18	8.59	Stockholm	HSBA LN	GBP	442.65	-6.83	Londres

## Global Overview:

### United States:

The U.S. market closes with positive returns, during the quarterly reporting season. In addition, Treasury yields rallied, contributing to the rise in the major indices, while stocks also benefited from the continued bombardment of better-than-expected third quarter corporate earnings. The DOW JONES index closed in positive territory, boosted by stocks in the communications and consumer non commodities sector. Top gainers were Coca-Cola Co. KO, +2.40% and 3M Co. MMM, +0.10%, while, General Electric Co. lost 0.49. The S&P500 index ended with a positive performance, as 10 of the 11 sectors closed higher, with only energy stocks left out, as crude oil prices remained below \$85 a barrel in the United States. However, the real estate sector ran up 3.9%, leading stocks with its biggest daily advance since May 2020. Finally, the NASDAQ index closed with positive performance after Microsoft reported better-than-expected earnings as it traded at \$250.66 at the end of the intraday session, rising 1.38% from the previous session. Over the past four weeks, Microsoft has gained 5.56%. On the other hand, Alphabet was trading at \$104.93, up \$1.96 or 1.90%. Thus, DOW JONES +1.07%; S&P 500 +1.63%; NASDAQ +2.25%, ended the day with positive results.

### Europe:

Major European indices ended the session with positive returns on hopes that the Federal Reserve may slow its pace of interest rate hikes. Investors reacted positively to Rishi Sunak's victory for Britain's prime ministerial post and await a key interest rate decision by the European Central Bank. The pan-European STOXX 600 index closed higher, with Utilities (+2.68%), Information Technology (+2.20%) and Industrials (+1.90%) all sectors driving this advance. The UK market, reflected in the FTSE 100, ended the session with gains. Investors welcomed headlines that former finance minister Rishi Sunak won, making him the next prime minister, easing some concerns about the political instability that has rocked markets recently. Meanwhile, the DAX index closed with positive returns, against a backdrop where the German 10-year bond yield hovered around 2.36%, on hopes that central banks may slow the pace of interest rate hikes early next year. Borrowing costs continue to rise amid inflation and recession risks, as well as increasing bond supply. Finally, the French market closed higher this session at a nearly five-week high. The private sector stagnated in October as weak growth in services failed to offset a further decline in manufacturing activity. Similarly, investors are looking ahead to Thursday's ECB monetary policy meeting, where officials are likely to raise interest rates by another 75 basis points to combat inflation. Thus, FTSE 100 +0.63%; CAC 40 +1.59%; DAX +1.58%; STOXX 600 +1.40% ended at positive levels.

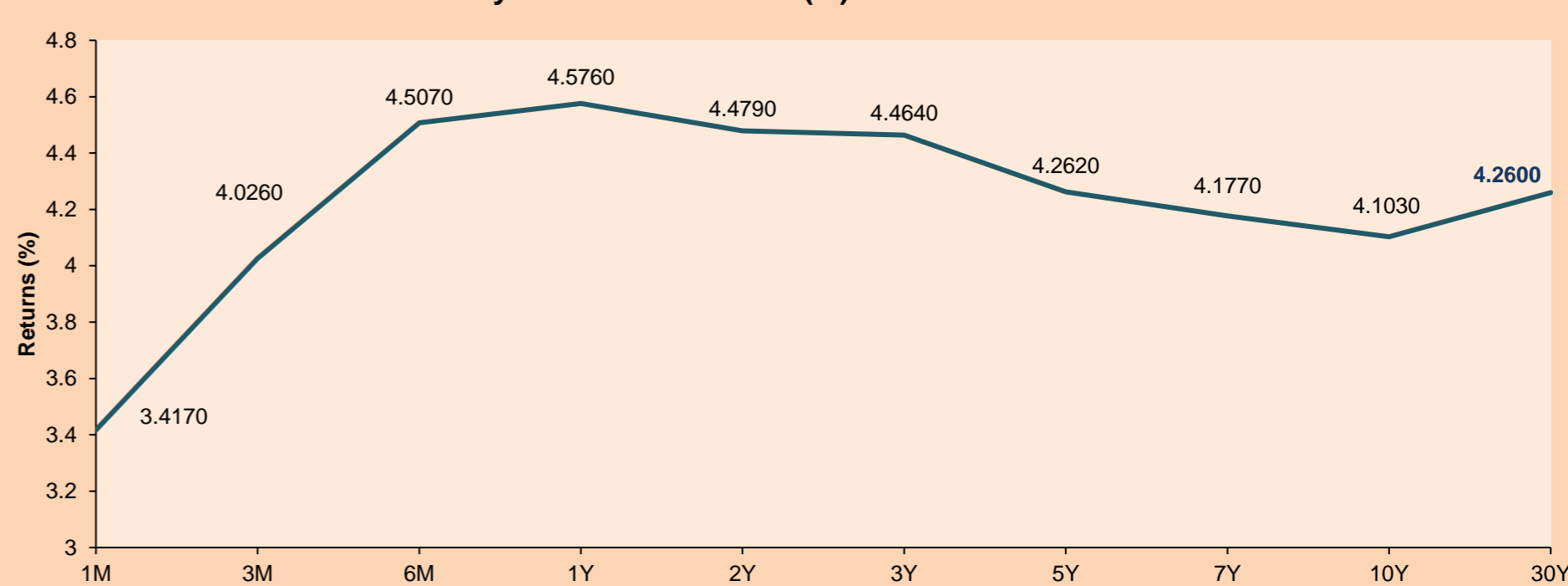
### Asia:

Major European indices ended the session with mostly positive returns, following the release of better than expected earnings reports, which offset concerns about rapidly rising interest rates and a slowdown in the euro zone economy. The pan-European STOXX 600 index closed higher with stocks in the real estate (+5.06%), technology (+3.80%) and financials (+2.47%) sectors leading the session's gains. Also, according to Renfinitiv IBES data and analysts' earnings estimates, of the 65 companies listed on the index, a 55.6% increase was reported, beating estimates of 31.3%. The UK market, reflected in the FTSE 100, ended with losses, with Energy (-1.88%) and Financials (-1.45%) among the worst hit sectors and on the individual stock side HSBC led the fall with almost -7%. Meanwhile, investors continue to wait for the country's political situation focused on the new government of Rishi Sunak. Meanwhile, the DAX index closed with positive returns, where SAP shares rose more than 6% after the company reported faster than expected revenue growth. Logitech International also rose more than 10% as it raised its revenue forecast for this year. Finally, the French market closed higher, boosted by a string of earnings in Europe and the US, coupled with expectations of a less hawkish Fed. Air Liquide shares led the way higher with +6.7% supported by higher energy prices, on the contrary, Worldline fell -2.9% followed by Orange -0.9%. Thus, FTSE 100 -0.01%; CAC 40 +1.94%; DAX +0.94%; STOXX 600 +1.44% finished at mostly positive levels.

## ETFs

ETFs	Curr.	Close	1D	5D	30 D	YTD	Exchange
SPDR S&P 500 ETF TRUST	USD	384.92	1.60%	3.72%	4.61%	-18.96%	NYSE Arca
ISHARES MSCI EMERGING MARKET	USD	34.21	0.83%	-2.70%	-4.92%	-29.97%	NYSE Arca
ISHARES IBOXX HIGH YLD CORP	USD	73.24	0.96%	0.47%	1.54%	-15.83%	NYSE Arca
FINANCIAL SELECT SECTOR SPDR	USD	33.01	1.20%	2.20%	6.31%	-15.47%	NYSE Arca
VANECK GOLD MINERS ETF	USD	24.41	2.01%	3.39%	8.78%	-23.79%	NYSE Arca
ISHARES RUSSELL 2000 ETF	USD	178.17	2.73%	2.30%	6.49%	-19.91%	NYSE Arca
SPDR GOLD SHARES	USD	154.00	0.23%	0.16%	0.65%	-9.92%	NYSE Arca
ISHARES 20+ YEAR TREASURY BO	USD	95.09	2.91%	-3.29%	-10.04%	-35.83%	NASDAQ GM
INVESTCO QQQ TRUST SERIES 1	USD	284.21	2.07%	4.69%	3.16%	-28.56%	NASDAQ GM
ISHARES BIOTECHNOLOGY ETF	USD	124.63	2.01%	1.56%	8.07%	-18.34%	NASDAQ GM
ENERGY SELECT SECTOR SPDR	USD	87.43	0.10%	6.63%	24.05%	57.53%	NYSE Arca
PROSHARES ULTRA VIX ST FUTUR	USD	11.08	-5.86%	-9.25%	-6.34%	-10.86%	Cboe BZX
UNITED STATES OIL FUND LP	USD	70.61	0.33%	2.78%	8.10%	29.89%	NYSE Arca
ISHARES MSCI BRAZIL ETF	USD	31.44	-1.69%	-2.06%	2.28%	12.01%	NYSE Arca
SPDR S&P OIL & GAS EXP & PR	USD	148.86	0.83%	4.61%	25.50%	55.27%	NYSE Arca
UTILITIES SELECT SECTOR SPDR	USD	65.12	2.01%	0.79%	-9.25%	-9.02%	NYSE Arca
ISHARES US REAL ESTATE ETF	USD	81.95	3.98%	1.54%	-4.49%	-29.44%	NYSE Arca
SPDR S&P BIOTECH ETF	USD	80.58	2.68%	-0.62%	5.13%	-28.03%	NYSE Arca
ISHARES IBOXX INVESTMENT GRA	USD	100.76	1.34%	-0.69%	-3.86%	-23.97%	NYSE Arca
ISHARES JP MORGAN USD EMERGI	USD	79.24	1.73%	0.23%	-3.27%	-27.34%	NASDAQ GM
REAL ESTATE SELECT SECT SPDR	USD	36.02	3.95%	1.49%	-3.84%	-30.48%	NYSE Arca
ISHARES CHINA LARGE-CAP ETF	USD	21.94	1.90%	-11.17%	-17.55%	-40.02%	NYSE Arca
CONSUMER STAPLES SPDR	USD	71.07	1.31%	2.78%	2.44%	-7.83%	NYSE Arca
VANECK JUNIOR GOLD MINERS	USD	29.88	2.12%	3.71%	10.63%	-28.74%	NYSE Arca
SPDR BLOOMBERG HIGH YIELD BO	USD	89.80	0.89%	0.40%	1.11%	-17.29%	NYSE Arca
VANGUARD REAL ESTATE ETF	USD	81.21	3.93%	1.68%	-2.67%	-30.00%	NYSE Arca
GRAYSCALE BITCOIN TRUST BTC	USD	12.22	5.80%	8.05%	9.16%	-64.32%	OTC US

### USA Treasury Bonds Yield Curve (%)



Source: Bloomberg



# LIMA

## Stocks

Ticker	Currency	Price	1D*	5D*	30D*	YTD*	Frequency	Volume (US\$)	Beta	Dividend Yield (%)	Price Earning	Market Cap. (M US\$)	Economic Sector*	Index Weight
▼ ALICORC1 PE**	S/.	6.10	-0.63%	-3.13%	3.10%	-7.59%	100.00%	28,282	0.75	4.10	10.31	1,299.99	Industrial	3.53%
- ATACOCB1 PE**	S/.	0.08	0.00%	0.00%	0.00%	-33.33%	5.00%	5	#N/A N/A	0.00	-	18.66	Mining	1.02%
▲ BACKUSI1 PE**	S/.	24.00	0.84%	9.09%	9.59%	17.07%	85.00%	57,843	0.78	14.29	7.47	7,752.54	Industrial	0.82%
▲ BAP PE**	US\$	138.70	4.29%	4.93%	12.44%	12.05%	100.00%	617,177	1.22	2.89	-	11,029.42	Diverse	5.82%
▲ BVN PE**	US\$	6.80	5.43%	3.03%	15.06%	-6.85%	95.00%	47,000	1.56	1.03	-	1,874.32	Mining	5.88%
▼ CASAGRC1 PE**	S/.	8.19	-9.00%	-4.88%	-3.19%	-10.00%	100.00%	4,743	1.13	74.80	5.43	172.50	Agricultural	1.31%
▲ BBVAC1 PE**	S/.	1.54	1.32%	1.32%	2.67%	-7.23%	90.00%	8,347	0.66	6.86	5.73	2,842.71	Finance	2.85%
▲ CORARE1 PE**	S/.	1.52	4.11%	10.95%	10.95%	-11.63%	85.00%	740,169	0.88	12.27	3.07	503.71	Industrial	1.72%
▼ CPACASC1 PE**	S/.	4.18	-0.48%	-0.48%	12.06%	-15.56%	85.00%	96,143	0.80	0.00	11.61	479.29	Industrial	2.38%
- CVERDEC1 PE**	US\$	29.00	0.00%	-2.52%	7.49%	-22.11%	90.00%	179	0.93	0.00	8.58	10,151.62	Mining	5.25%
▲ ENGEPEC1 PE**	S/.	2.63	1.15%	1.15%	0.00%	-7.39%	85.00%	88,824	0.80	17.00	6.36	1,149.44	Public Services	1.44%
- ENDISPC1**	S/.	3.98	0.00%	-0.50%	0.76%	-0.50%	50.00%	16	0.83	0.00	6.52	635.50	Public Services	0.98%
▲ FERREYC1 PE**	S/.	2.27	3.18%	0.89%	8.10%	10.73%	100.00%	77,374	0.85	11.44	4.58	537.00	Diverse	4.90%
▲ AENZAC1 PE**	S/.	0.74	2.78%	5.71%	-6.33%	-45.99%	45.00%	706,342	#N/A N/A	0.00	-	221.49	Diverse	4.05%
- IFS PE**	US\$	22.00	0.00%	0.82%	4.76%	-18.06%	85.00%	30,600	0.83	10.91	6.93	2,539.20	Diverse	7.22%
- INRETC1 PE**	US\$	34.50	0.00%	0.00%	8.49%	-1.29%	90.00%	349	0.86	0.00	22.65	3,751.77	Diverse	5.28%
▲ LUSURC1 PE**	S/.	14.35	2.50%	3.24%	-5.28%	0.77%	80.00%	43,105	0.00	5.33	11.76	1,747.29	Public Services	1.81%
▲ MINSURI1 PE**	S/.	3.69	2.50%	-0.27%	-4.40%	-6.58%	80.00%	69,415	1.08	19.72	1.25	2,660.10	Mining	3.09%
- PML PE**	US\$	0.09	0.00%	0.00%	0.00%	-25.00%	20.00%	7,160	#N/A N/A	0.00	-	22.47	Mining	2.12%
▲ SCCO PE**	US\$	47.50	3.83%	0.96%	10.47%	-23.11%	85.00%	33,062	1.14	8.42	11.61	36,721.89	Industrial	2.12%
▲ SIDERC1 PE**	S/.	1.66	0.61%	12.93%	13.70%	3.75%	65.00%	30,651	0.72	25.02	4.02	290.56	Mining	2.14%
▲ UNACEMC1 PE**	S/.	1.74	0.58%	1.16%	8.75%	-27.50%	80.00%	11,117	1.03	6.32	-	791.04	Mining	2.93%
▲ VOLCABC1 PE**	S/.	0.52	4.00%	1.96%	-10.34%	-13.33%	100.00%	39,586	1.44	0.00	10.42	530.06	Industrial	3.00%
▲ BROCALC1 PE**	S/.	5.30	1.92%	-0.19%	7.94%	1.92%	35.00%	1,243	0.00	0.50	37.32	214.05	Mining	5.90%
▲ CORAREC1 PE**	US\$	1.95	1.56%	1.56%	1.04%	2.63%	25.00%	9,419	0.00	7.86	3.94	2,014.43	Mining	2.12%
- ENGIEC1 PE**	S/.	5.00	0.00%	-0.40%	-7.41%	-14.68%	45.00%	20,272	#N/A N/A	5.02	15.29	751.86	Diversas	2.12%
- GBVLAC1 PE**	S/.	2.35	0.00%	2.17%	-2.89%	-13.60%	20.00%	2,965	0.00	0.00	-	107.00	Diversas	2.14%

Quantity of shares: 27  
 Source: Bloomberg, Economática  
 \* Bloomberg Industry Classification System  
 \*\* PER is used in the stock market and original currency of the instrument  
 \*Legend: Variation 1D: 1 Day; 5D: 5 Days; 1M: 1 Month; YTD: Var.% 12/31/21 to date

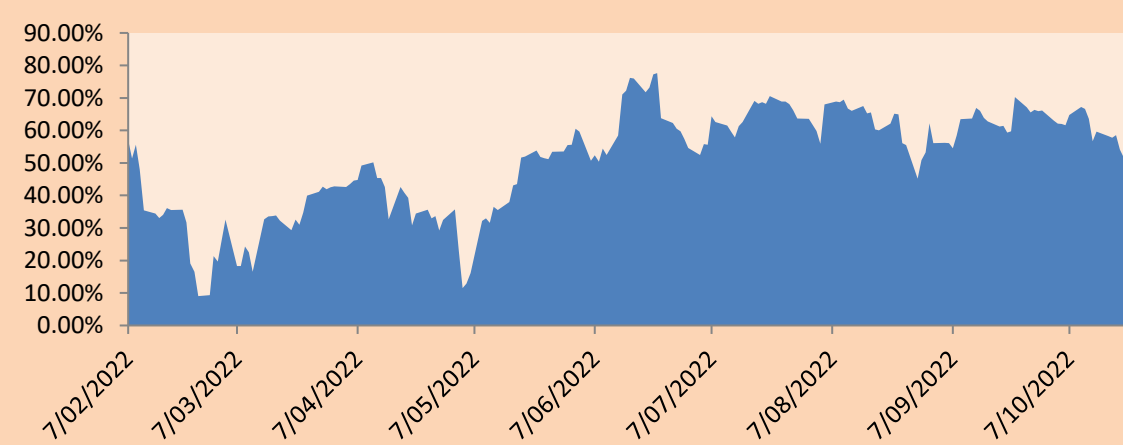
### Sectorial Indices

	Close	1D*	5D*	30D*	YTD*	Beta
▲ S&P/BVLMining	342.32	3.63%	1.58%	11.37%	-16.83%	1.24
▲ S&P/BVLConsumer	1,239.10	0.40%	2.32%	8.19%	7.94%	0.60
▲ S&P/BVLIndustrials	239.40	1.67%	1.73%	6.92%	-7.23%	0.69
▲ S&P/BVLFinancials	1,016.38	3.90%	5.15%	14.04%	12.17%	1.20
▲ S&P/BVLConstruction	231.84	0.95%	2.15%	6.36%	-18.19%	0.64
▲ S&P/BVLPublicSvcs	598.47	0.37%	0.07%	-3.67%	9.11%	0.13
▲ S&P/BVLElectricUtil	584.25	0.36%	0.07%	-3.68%	9.11%	0.13

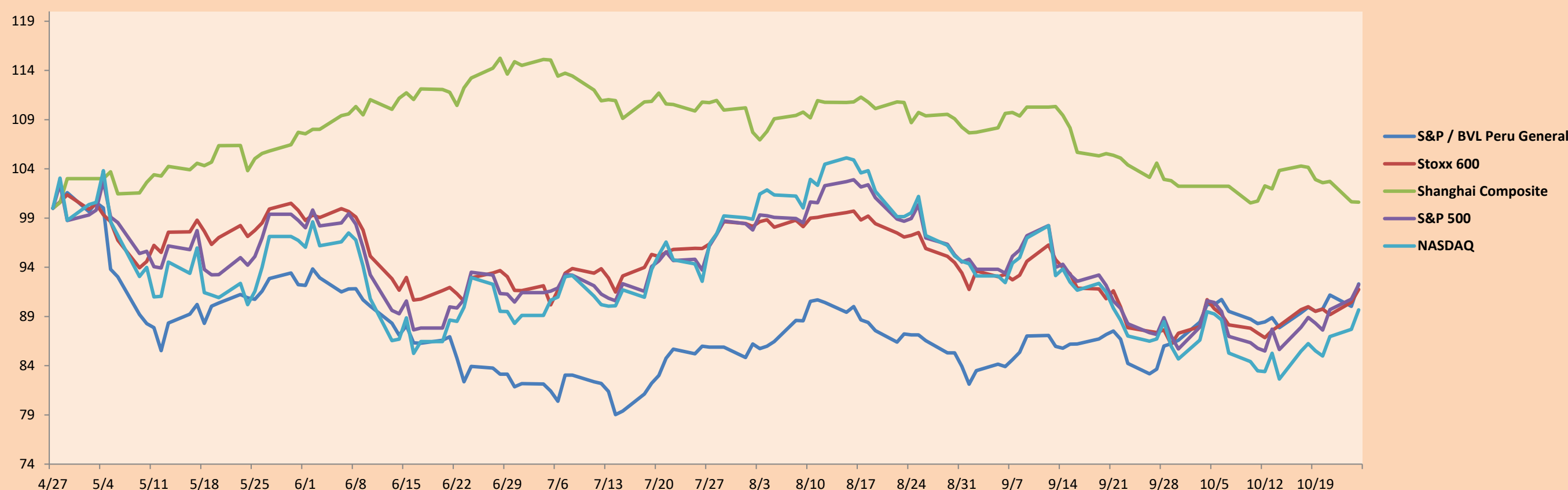
S&P/BVLConstructionTRPEN

\*Legend: Variation 1D: 1 Day; 5D: 5 Days; 1M: 1 Month; YTD: Var.% 12/31/21 to date

Correlation Graph of Returns of Mining Index against Metallic Index of London (3 months)



Indices (6 months)



Base: 27/04/22=100  
 Source: Bloomberg

Capital Market Laboratory Coordinator: MS Javier Penny Pestana  
 Collaboration: Maciell Esquerre, Fedele Calle, Nikolas Díaz y Mariafe Urrutia  
 email: pulsobursatil@ulima.edu.pe  
 facebook: www.facebook.com/pulsobursatil.ul

## SOVEREIGN RATING

### RISK RATINGS

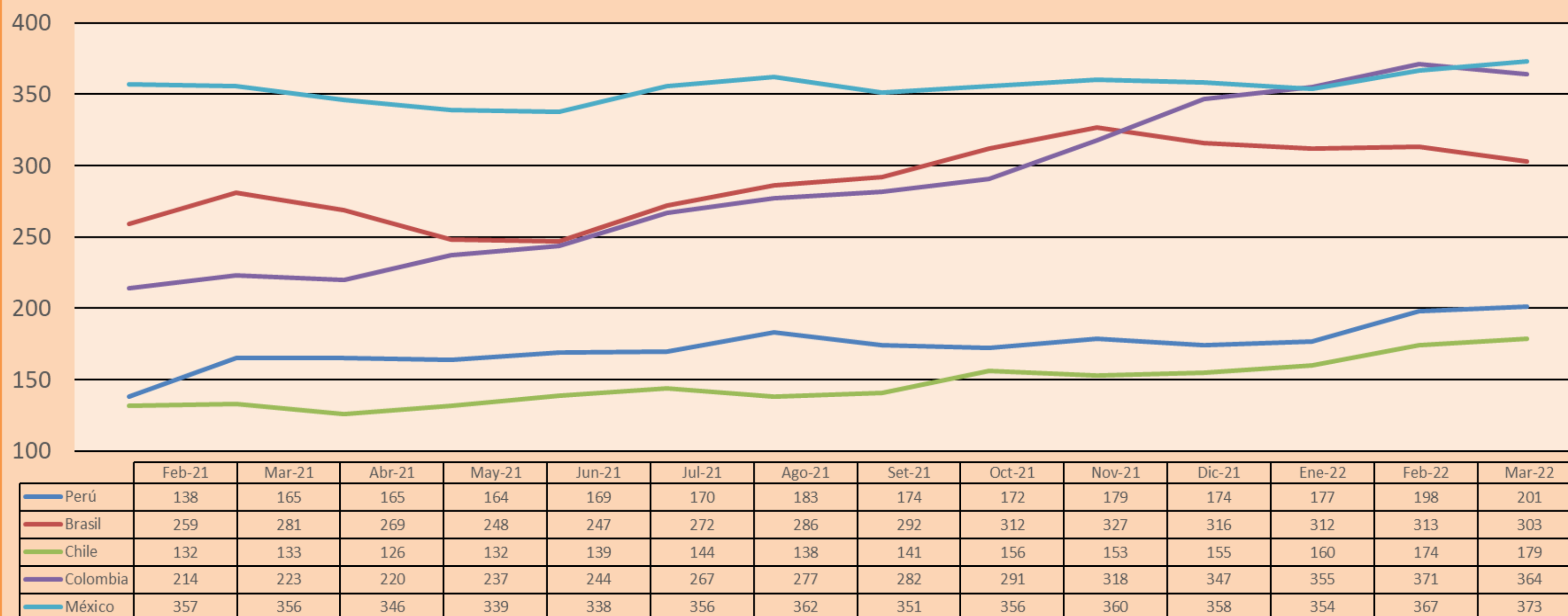
Moody's	S&P	Fitch	
Aaa	AAA	AAA	Prime
Aa1	AA+	AA+	High credit quality
Aa2	AA	AA	
Aa3	AA-	AA-	
A1	A+	A+	Medium-high grade, with low credit risk
A2	A	A	
A3	A-	A-	
Baa1	BBB+	BBB+	Moderate Credit Risk
Baa2	BBB	BBB	
Baa3	BBB-	BBB-	
Ba1	BB+	BB+	It has speculative elements and it is subject to substantial credit risk
Ba2	BB	BB	
Ba3	BB-	BB-	
B1	B+	B+	It is considered speculative and it has high credit risk
B2	B	B	
B3	B-	B-	
Caa1	CCC+	CCC	
Caa2	CCC	CCC	
Caa3	CCC-	CCC	
Ca	CC	CC	Very close to default or in default
	C	C	
C	D	DD	
		D	

Source: Bloomberg

Latin America Credit Rating			
Clasificadora de riesgo			
Country	Moody's	Fitch	S&P
Peru	Baa1	BBB	BBB
México	Ba2	BB-	BB-
Venezuela	C	WD	NR
Brazil	Ba2	BB-	BB-
Colombia	Baa2	BB+	BB+
Chile	A2	A-	A
Argentine	Ca	WD	CCC+
Panama	Baa2	BBB-	BBB

Source: Bloomberg

## LATAM Country Risk(bps)



Source: BCRP

Capital Market Laboratory Coordinator: MS Javier Penny Pestana  
Collaboration: Maciell Esquerre, Fedele Calle, Nikolas Diaz y Mariafe Urrutia  
email: pulsobursatil@ulima.edu.pe  
facebook: www.facebook.com/pulsobursatil.ul