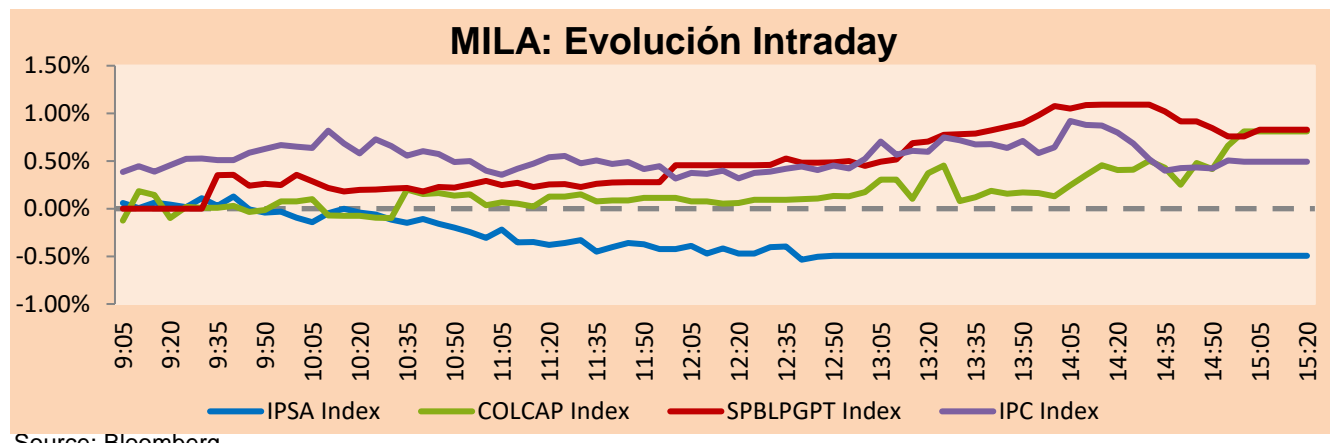


MILA

Lima, november 23, 2022

Main Indexes	Close	1 D	5 D	1 M	YTD	Cap. Burs. (US\$ bill)
▼ IPSA (Chile)	5,260.91	-0.64%	0.58%	2.21%	22.11%	100.97
▼ IGPA (Chile)	28,475.86	-0.70%	0.57%	1.78%	32.04%	116.27
▲ COLSC (Colombia)	922.77	0.06%	0.07%	-0.18%	-5.18%	5.12
▲ COLCAP (Colombia)	1,266.00	0.81%	-1.02%	2.79%	-10.27%	54.57
▲ S&P/BVL (Perú)*	22,487.10	0.83%	1.57%	9.80%	6.51%	94.42
▲ S&P/BVL SEL (Perú)	587.05	0.86%	0.34%	8.42%	4.17%	80.25
▲ S&P/BVL LIMA 25	30,892.32	0.91%	1.09%	6.50%	2.04%	93.91
▲ IPC (México)	51,993.95	0.45%	0.65%	10.39%	-2.36%	337.83
▲ S&P MILA 40	442.37	2.23%	-3.17%	7.55%	-0.56%	6,537.98

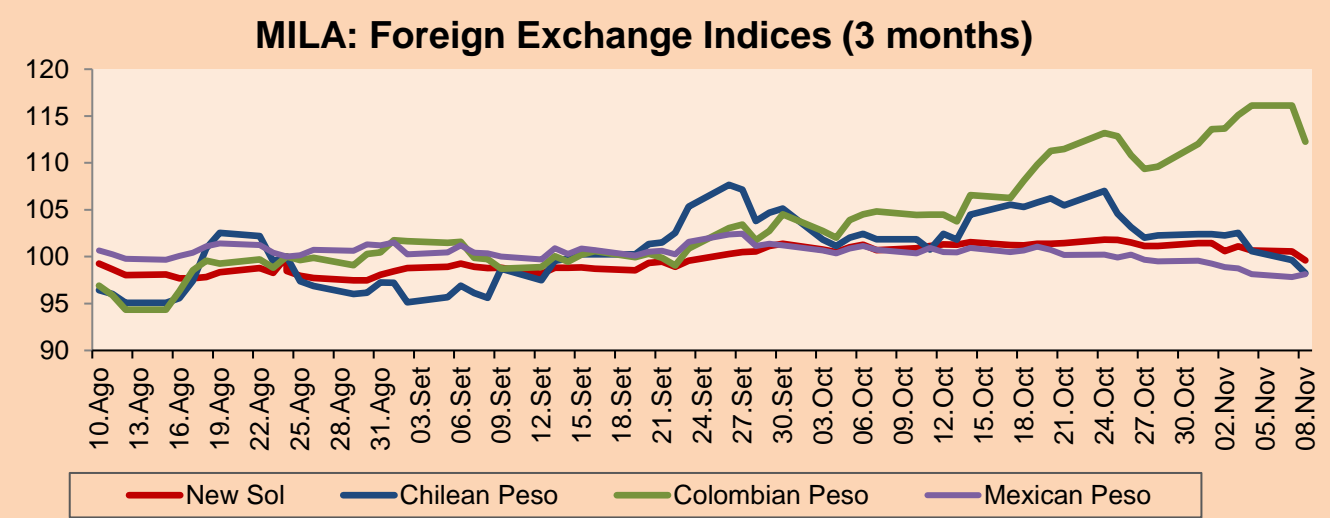
*Legend: Variation 1D: 1 day; 5D: 5 days; 1M: 1 Month; YTD: Var% 12/31/21 to date



Source: Bloomberg

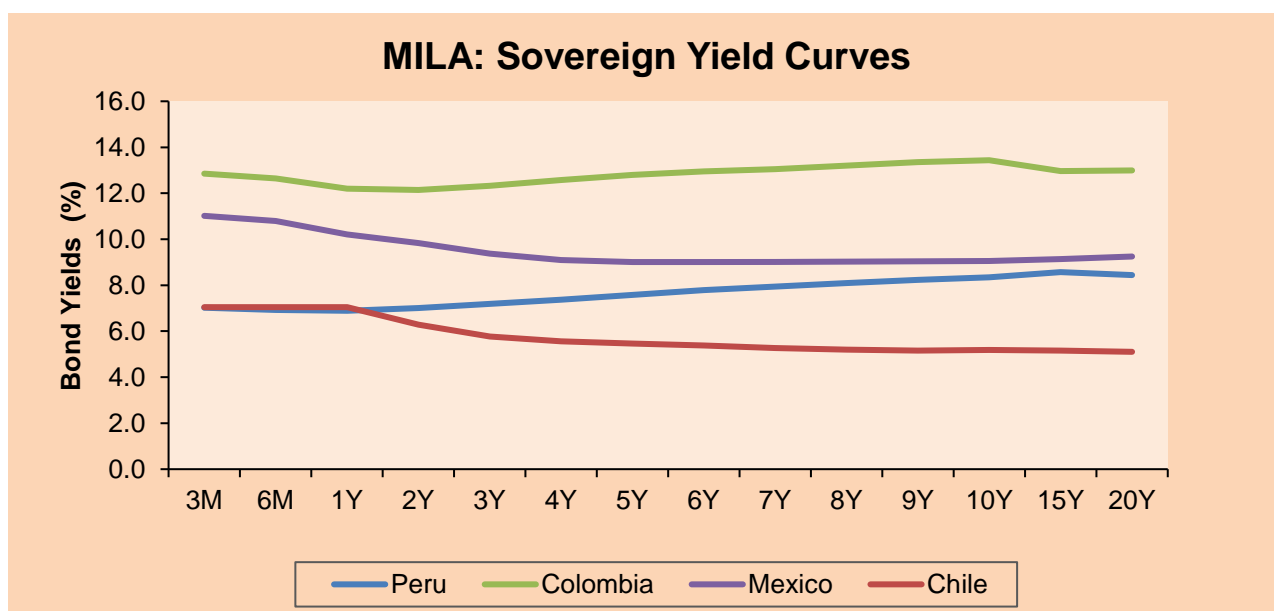
Currency	Price	1D*	5D*	30 D*	YTD*
▲ Sol (PEN)	3,852.1	0.01%	0.42%	-3.70%	-3.68%
▼ Chilean Peso (CLP)	915.63	-1.25%	0.54%	-7.13%	7.47%
▼ Colombian Peso (COP)	4,890.20	-0.31%	-1.26%	-2.01%	19.85%
▼ Mexican Peso (MXN)	19.35	-0.45%	0.09%	-2.93%	-5.73%

*Legend: Variation 1D: 1 day; 5D: 5 days; 1M: 1 Month; YTD: Var% 12/31/21 to date



Base: 24/08/22=100
Source: Bloomberg

Fixed Income	Currency	Price	Bid Yield (%)	Ask Yield (%)	Duration
PERU 7.35 07/21/25	USD	105.669	5.14	4.93	2.33
PERU 4.125 08/25/27	USD	97.101	4.88	4.75	4.18
PERU 8.75 11/21/33	USD	123.472	5.87	5.78	7.41
PERU 6.55 03/14/37	USD	106.629	5.90	5.82	8.81
PERU 5.625 11/18/2050	USD	98.889	5.72	5.69	13.78
CHILE 2.25 10/30/22	USD	99.938	54.01	-27.10	0.01
CHILE 3.125 01/21/26	USD	94.867	4.95	4.85	2.91
CHILE 3.625 10/30/42	USD	76.681	5.63	5.53	13.11
COLOM 11.85 03/09/28	USD	119.013	7.49	7.36	3.93
COLOM 10.375 01/28/33	USD	109.316	9.13	8.78	6.16
COLOM 7.375 09/18/37	USD	92.341	8.34	8.22	8.50
COLOM 6.125 01/18/41	USD	78.586	8.51	8.40	9.57
MEX 4 10/02/23	USD	78.586	8.511	8.396	9.57
MEX5.55 01/45	USD	92.268	6.22	6.17	11.99



Source: Bloomberg

Equity

Largest gains	Exchange	Currency	Price	▲%	Largest losses	Exchange	Currency	Price	▼%
SOQUIMICH-B	Chile	CLP	95870.00	5.95	GRUPO F BANORT-O	Mexico	MXN	156.2	-2.56
CMPC	Chile	CLP	1639.90	4.53	BECLE SAB DE CV	Mexico	MXN	41.11	-2.40
BUENAVENTURA-ADR	Peru	USD	7.73	4.46	COLBUN SA	Chile	CLP	91.8	-1.82
EMPRESAS COPEC	Chile	CLP	6889.90	3.45	ALFA SAB-A	Mexico	MXN	13.71	-1.72
MEGACABLE-CPO	Mexico	MXN	45.08	3.42	INRETAIL PERU CO	Peru	USD	34	-1.59

Per Turnover	Exchange	Amount (US\$)	Per Volume	Exchange	Volume
AMERICA MOVIL-L	Mexico	78,629,750	ITAU CORPBANCA	Chile	1,047,244,022
GRUPO MEXICO-B	Mexico	73,569,603	BANCO DE CHILE	Chile	304,370,743
WALMART DE MEXIC	Mexico	57,520,472	BANCO SANTANDER	Chile	179,927,141
SOQUIMICH-B	Chile	49,055,462	ENEL CHILE SA	Chile	102,642,295
GRUPO F BANORT-O	Mexico	45,358,717	AMERICA MOVIL-L	Mexico	78,191,840

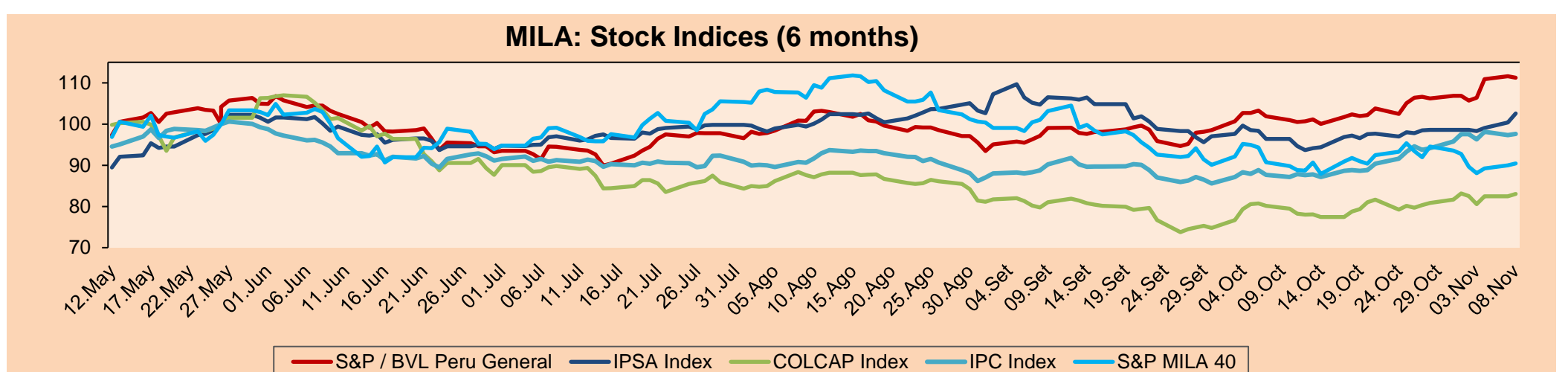
MILA

Peru: The BVL General index ended today's session with a positive result of +0.83%. The index maintains a neutral accumulated annual trend of +6.51% in local currency and a positive accumulated trend of +10.58% in dollar-adjusted currency. Regarding the S&P/BVL Peru SEL, it varied by +0.86% while the S&P/BVL LIMA 25 by +0.91%. The PEN spot reached S/.3.8521. Headline: MEF gives free reign to Congress to modify the 2023 public budget law.

Chile: The IPSA index ended the day with a negative return of -0.64%. The most negatively affected sectors of the day were Real Estate (-1.88%) and Communication Services (-1.77%). The worst performing stocks were Parque Arauco SA (-3.48%) and Empresas CMCP SA (-3.01%). Headline: PPP platform unions request reconsideration of the Labor Directorate's ruling.

Colombia: The COLCAP index ended the session with a positive return of +0.81%. The most benefited sectors of the day were Materials (+1.07%) and Utilities (+0.87%). The best performing stocks were Promigas SA ESP (+4.88%) and Banco de Bogotá (+4.82%). Headline: More than \$5 billion in losses due to closure of the road to Buenaventura.

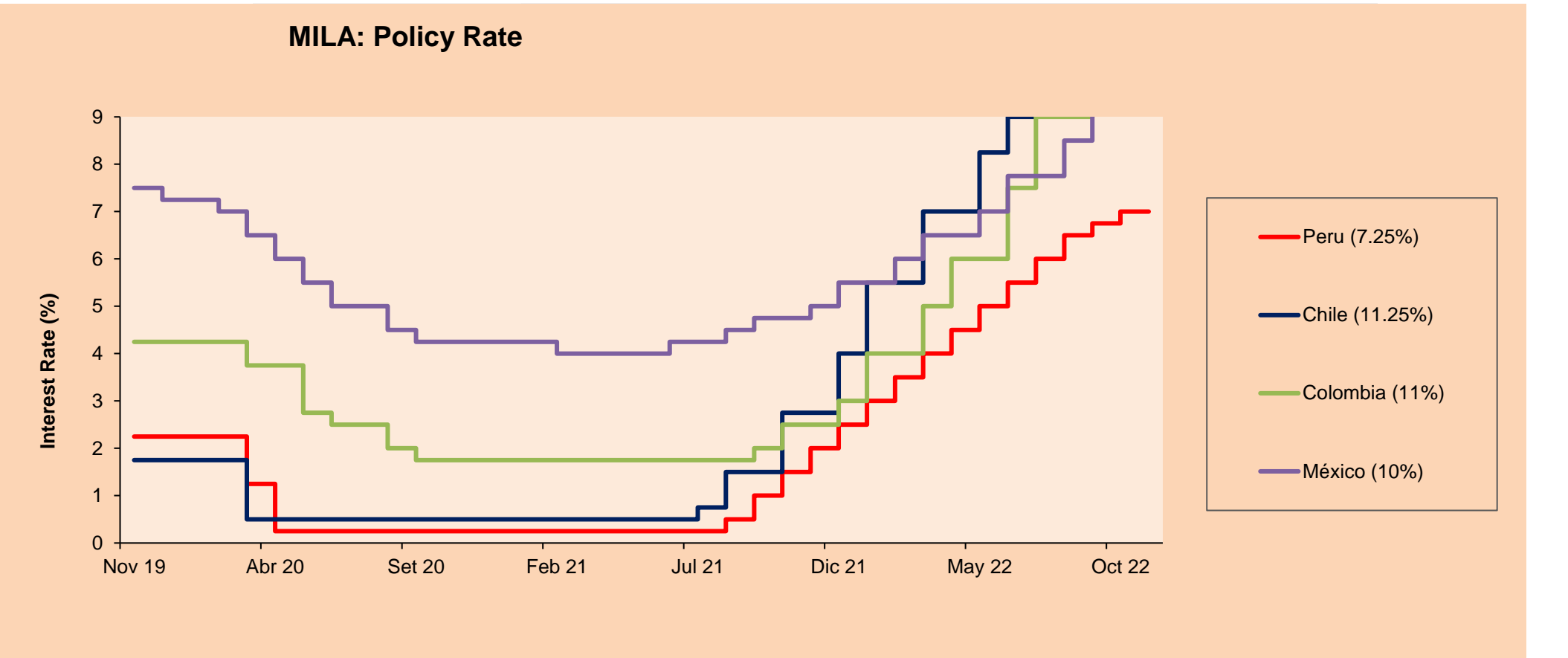
Mexico: The IPC index closed the day in positive territory with +0.49%. The sectors that benefited the most during the day were Industrials (+1.48%) and Consumer Staples (+1.20%). The best performing stocks were Gruma SAB (+4.24%) and Industrias Penoles SAB de CV (+3.40%). Headline: Banxico must continue to raise rates to bring inflation to target: OECD.



Base: 12/05/22=100
Source: Bloomberg

ETFs

ETFs	Curr.	Close	1D	5D	30 D	YTD	Exchange
▲ iShares MSCI All Peru Caped Index Fund	USD	29.37	0.10%	-0.78%	15.58%	-0.84%	NYSE Arca
▲ iShares MSCI All Chile Caped Index Fund	USD	26.38	3.05%	-0.30%	11.54%	14.25%	Cboe BZX
Global X MSCI Colombia	USD						
▲ iShares MSCI Mexico Capped	USD	54.27	1.06%	1.14%	12.92%	7.25%	NYSE Arca
▲ iShares MSCI Emerging Markets	USD	37.95	0.82%	-0.60%	11.85%	-22.31%	NYSE Arca
▲ Vanguard FTSE Emerging Markets	USD	38.92	0.54%	-0.31%	10.19%	-21.31%	NYSE Arca
▲ iShares Core MSCI Emerging Markets	USD	46.71	0.84%	-0.41%	11.45%	-21.97%	NYSE Arca
▲ iShares JP Morgan Emerging Markets Bonds	USD	53.18	0.43%	-0.47%	5.73%	-15.35%	Cboe BZX
▲ Morgan Stanley Emerging Markets Domestic	USD	4.28	1.18%	0.47%	6.73%	-21.90%	New York



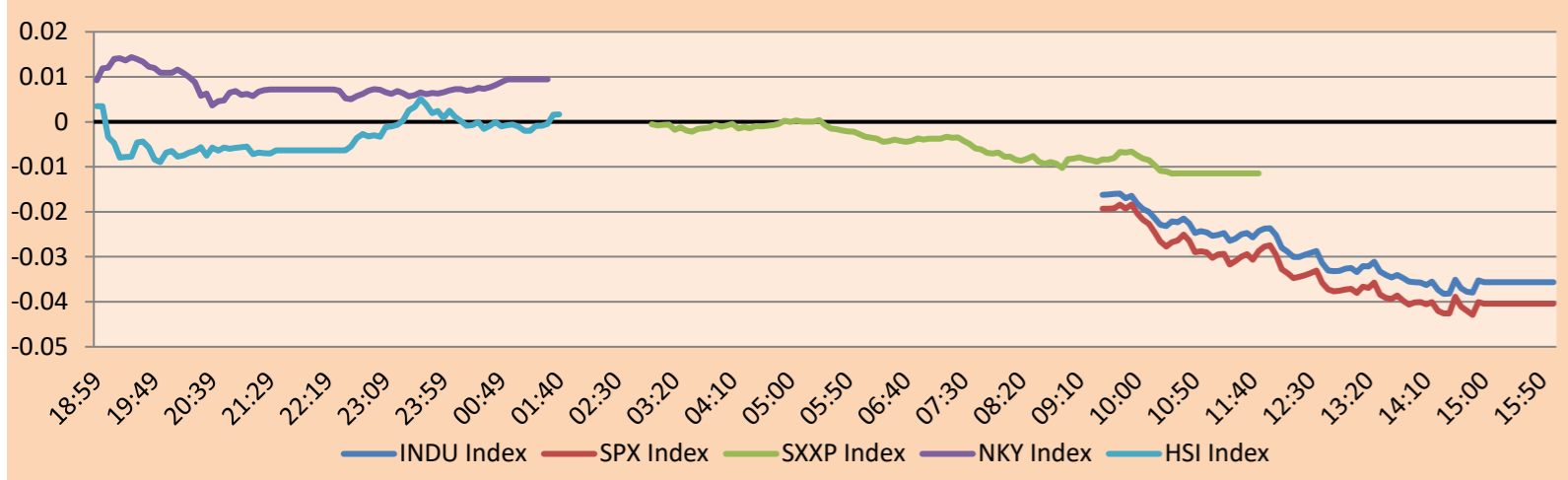
Source: Bloomberg

WORLD

Main Indices	Close	1 D*	5 D*	1 M*	YTD*	Market Cap. (US\$ Mill.)
▲ Dow Jones (USA)	34,194.06	0.28%	1.91%	10.01%	-5.90%	10,133,288
▲ Standard & Poor's 500 (EEUU)	4,027.26	0.59%	1.73%	7.31%	-15.50%	34,951,225
▲ NASDAQ Composite (USA)	11,285.32	0.99%	0.91%	3.92%	-27.87%	18,927,277
▲ Stoxx EUROPE 600 (Europe)	438.82	0.60%	2.01%	10.73%	-10.04%	11,604,159
▲ DAX (Germany)	14,427.59	0.04%	1.36%	13.33%	-9.17%	1,451,178
▲ FTSE 100 (United Kingdom)	7,465.24	0.17%	1.55%	7.11%	1.09%	1,690,507
▲ CAC 40 (France)	6,679.09	0.32%	1.09%	10.67%	-6.63%	2,087,387
▲ IBEX 35 (Spain)	8,331.20	0.07%	2.84%	10.41%	-4.39%	534,115
▲ MSCI AC Asia Pacific Index	151.06	0.35%	-2.38%	11.23%	-21.78%	20,149,825
▲ HANG SENG (Hong kong)	17,523.81	0.57%	-4.01%	15.43%	-25.10%	2,701,783
▲ SHANGHAI SE Comp. (China)	3,096.91	0.26%	-0.74%	4.01%	-14.91%	6,132,925
▲ NIKKEI 225 (Japan)	28,115.74	0.61%	0.45%	4.56%	-2.35%	3,544,148
▲ S&P / ASX 200 (Australia)	7,231.77	0.70%	1.54%	6.67%	-2.86%	1,626,448
▲ KOSPI (South Korea)	2,418.01	0.53%	-2.40%	8.13%	-18.79%	1,365,239

*Legend: Variation 1D: 1 Day; 5D: 5 Days; 1M: 1 Month; YTD: Var.% 12/31/21 to date

Mercado Evolución Intraday (var %)

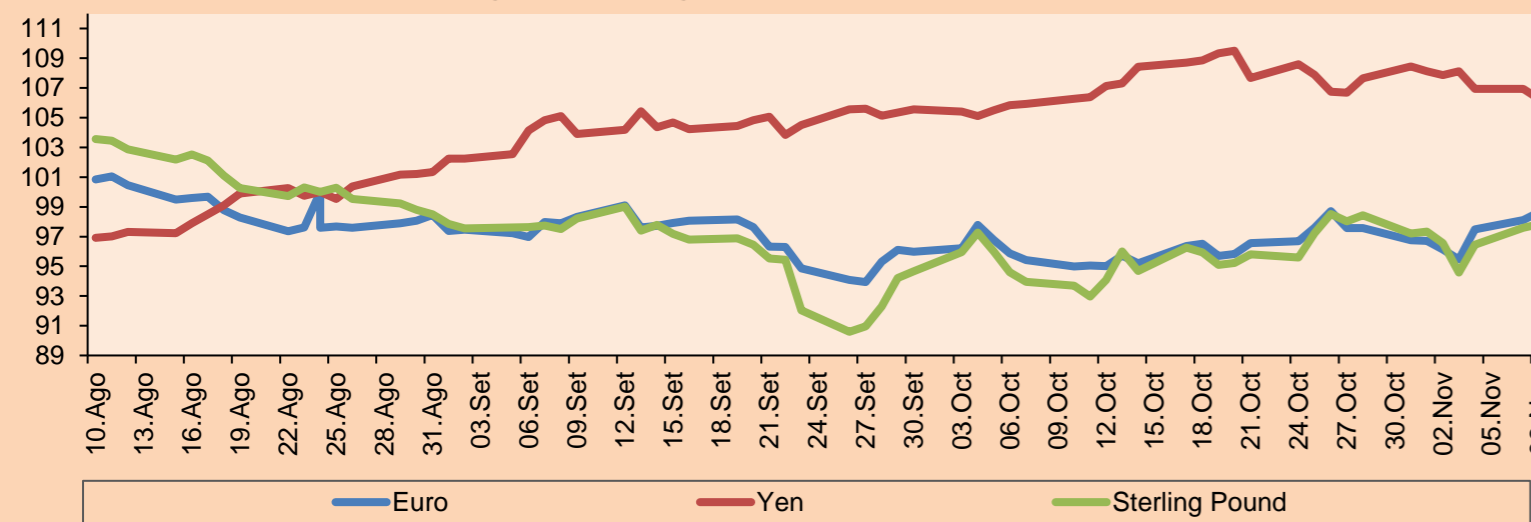


Source: Bloomberg

Currency	Price	1 D*	5 D*	1 M*	YTD*
▲ Euro	1.0397	0.90%	0.02%	5.30%	-8.56%
▼ Yen	139.5400	-1.20%	0.03%	-6.29%	21.25%
▲ Sterling Pound	1.2061	1.47%	1.23%	6.94%	-10.87%
▲ Yuan	7.1605	0.29%	0.88%	-1.41%	12.66%
▲ Hong Kong Dollar	7.8179	0.01%	-0.08%	-0.41%	0.27%
▼ Brazilian Real	5.3496	-0.26%	-0.80%	0.89%	-4.06%
▲ Argentine Peso	164.8347	0.21%	1.46%	6.53%	60.44%

*Legend: Variation 1D: 1 Day; 5D: 5 Days; 1M: 1 Month; YTD: Var.% 12/31/21 to date

Foreign Exchange Indices (3 months)

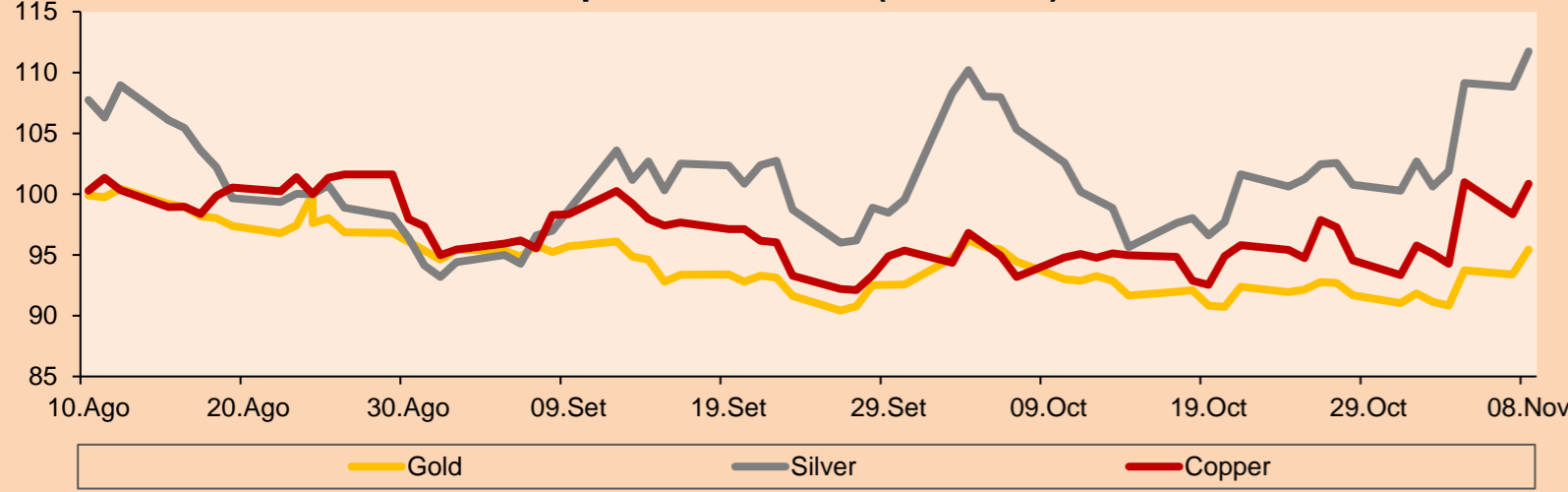


Base: 24/08/22=100
Source: Bloomberg

Commodities	Close	1 D*	5 D*	1 M*	YTD*
▲ Oro (US\$ Oz. T) (LME)	1,749.84	0.55%	-1.35%	6.07%	-4.34%
▲ Plata (US\$ Oz. T) (LME)	21.54	2.14%	0.30%	11.98%	-7.60%
- Cobre (US\$ TM) (LME)	7,975.25	0.00%	-3.46%	3.72%	-18.12%
- Zinc (US\$ TM) (LME)	2,906.00	0.00%	-5.08%	-3.50%	-19.05%
▼ Petróleo WTI (US\$ Barril) (NYM)	77.41	-4.37%	-8.93%	-7.39%	11.73%
- Estaño (US\$ TM) (LME)	22,219.00	0.00%	-6.73%	20.39%	-43.57%
- Plomo (US\$ TM) (LME)	2,077.00	0.00%	-4.14%	9.09%	-11.15%
▼ Azúcar #11 (US\$ Libra) (NYB-ICE)	19.55	-0.96%	-3.55%	7.83%	6.08%
▼ Cacao (US\$ TM) (NYB-ICE)	2,444.00	-0.45%	-2.32%	4.58%	-3.86%
▼ Café Arábica (US\$ TM) (NYB-ICE)	162.75	-1.18%	2.75%	-12.00%	-26.89%

*Leyenda: Variación 1D: 1 Día; 5D: 5 Días; 1M: 1 Mes; YTD: Var.% 31/12/21 a la fecha

Principal Metals Index (3 months)



Base: 24/08/22=100
Source: Bloomberg

Equity

Germany (Stocks from DAX Index)

Largest gains	Curr.	Price	▲%	Exchange	Largest losses	Curr.	Price	▼%	Exchange
ADS GY	EUR	124.3	1.06	Xetra	PAH3 GY	EUR	58.18	-0.41	Xetra
ENR GY	EUR	15.49	2.68	Xetra	PUM GY	EUR	49.63	-0.22	Xetra
MRK GY	EUR	171	-0.78	Xetra	BMW GY	EUR	83.77	-0.39	Xetra
MUV2 GY	EUR	297.8	0.85	Xetra	MTX GY	EUR	197.3	-0.10	Xetra

Europe (Stocks from STOXX EUROPE 600)

Largest gains	Curr.	Price	▲%	Exchange	Largest losses	Curr.	Price	▼%	Exchange
BESI NA	EUR	62.42	1.69	EN Amsterdam	PSN LN	GBP	1314.5	1.39	Londres
NOD NO	NOK	180.1	2.33	Oslo	BAYN GY	EUR	54.49	-0.22	Xetra
IFX GY	EUR	31.685	0.05	Xetra	HBR LN	GBP	312.3	-2.59	Londres
KINVB SS	SEK	163.05	4.15	Stockholm	LDO IM	EUR	7.53	-0.26	Borsa Italiana

Global Overview:

United States:

The U.S. market closed with positive returns, as Fed minutes show that officials consider easing the interest rate hike, as the health of the economy is being severely impacted. The DOW JONES index closed with gains this session, with the Communication Services (+1.77%) and Information Technology (+0.77%) sectors leading the session's gains. With respect to individual stocks Walt Disney (+2.78%) and Salesforce (+2.00%) were the top performers. The S&P 500 index also ended with a positive performance, after some stocks had one of their biggest moves, due to minutes that have given hope to the market that in December the Fed will raise the interest rate 50 bps, softening the hike; in addition, these same stocks have been affected by bank reports, or quarterly reports. For example, Autodesk shares fell 5.7% after the company issued a weak financial outlook, despite beating expectations for top and bottom line results in its latest quarter. Finally, the NASDAQ index ended the day higher with shares of Kaler PLC (+79.62%) and Venus Concept Inc. (+59.96%) leading the gains. Conversely, Biolase Inc (-39.75%) and Waitr Holdings Inc (-31.32%) were the worst performers. Thus, DOW JONES +0.28%, S&P 500 +0.59% and NASDAQ +0.99% ended the day with positive results.

Europe:

The main European indices ended the session with positive performances. The pan-European STOXX 600 index closed higher, as new PMI indices showed that the contraction in business activity eased slightly in November and its figures exceeded market expectations. Also, the Vice President of the Central Bank, Luis de Guindos, indicated that interest rates will continue to be raised, as inflation is well above the 2% target. The UK market, reflected in the FTSE 100, benefited from gains in the consumer discretionary and materials sectors. However, new PMI data point to a slowdown in business activity. Similarly, the German market, reflected in the DAX index, closed in positive territory, despite the fact that, at the corporate level, Credit Suisse expects to make a pre-tax loss of up to 1.5 billion francs in the fourth quarter. The French market closed in positive territory, boosted on the one hand by a slight easing of inflationary pressures, and on the other hand by better results from luxury stocks and technology companies. However, the private sector contracted for the first time in November after 21 months. Thus, FTSE 100 +0.17%; CAC 40 +0.32%; DAX +0.04%; STOXX 600 +0.60% ended at positive levels.

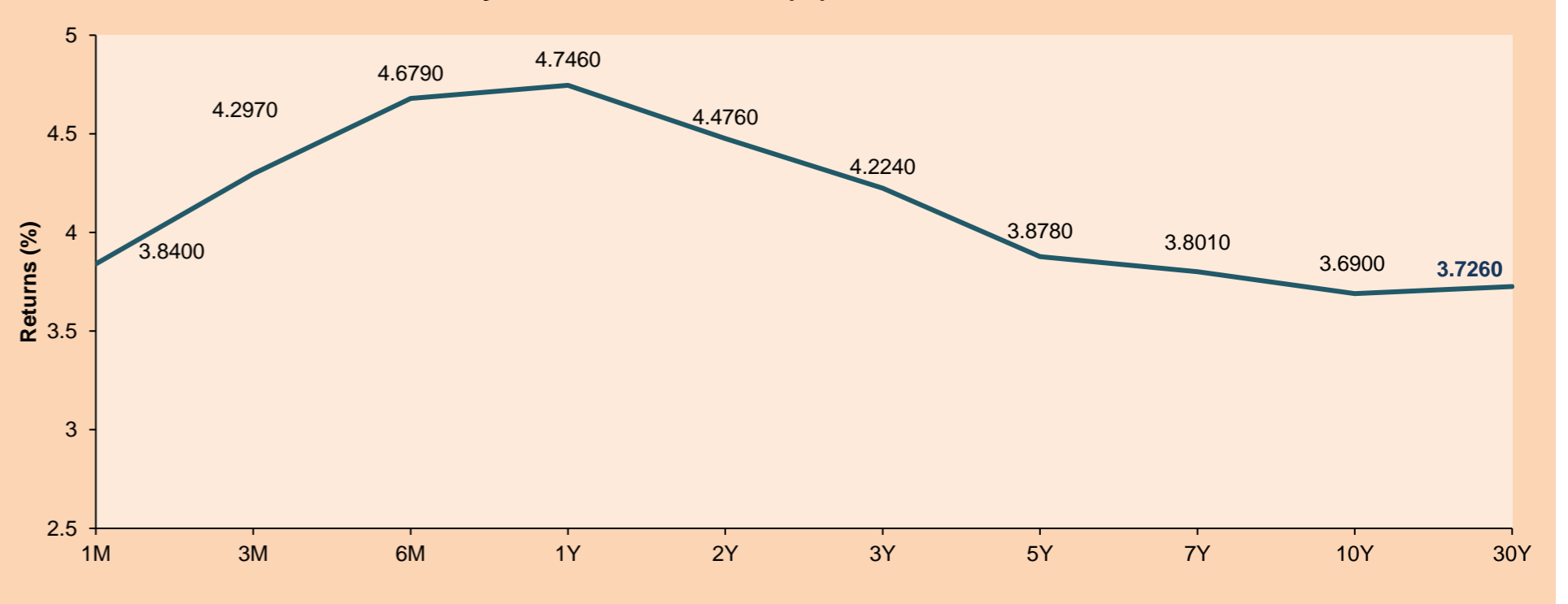
Asia:

Major Asian indices closed with positive returns. Against a backdrop where investors remain cautious ahead of the US Federal Reserve meeting minutes which could offer clues on the path of US rate hikes, while closely monitoring the COVID-19 situation in China. The Chinese market ended with gains, thanks to property policy support, including the central bank's 200 billion loan. Energy and real estate stocks also rose by 1.2% and 0.1%, respectively. In line, the Hang Seng index closed higher after a night of gains on Wall Street. In individual stocks Alibaba jumped 3.2% after Chinese authorities announced they are set to impose a hefty fine on its subsidiary Ant Group. The South Korean market ended with positive returns after overnight gains on Wall Street and led by upbeat platform and entertainment stocks. Among the heavyweights, Samsung rose 0.66%, in contrast to LG Energy which fell 1.75%. The Japanese market was closed on Wednesday for a bank holiday. The Australian market ended higher, driven by mining and energy stocks. Oil majors Santos Ltd and Woodside Energy remained upbeat, rising 0.6% and 1.1%, respectively. Miners were up 1%. Thus, NIKKEI +0.61%; HANG SENG +0.57%; CSI 300 +0.11%; S&P/ASX 200 +0.70%; KOSPI 0.53 %, SHANGHAI COMPOSITE +0.26% ended with positive returns.

ETFs

ETFs	Curr.	Close	1D	5D	30 D	YTD	Exchange
SPDR S&P 500 ETF TRUST	USD	402.42	0.63%	1.76%	6.22%	-15.27%	NYSE Arca
ISHARES MSCI EMERGING MARKET	USD	37.95	0.82%	-0.60%	11.85%	-22.31%	NYSE Arca
ISHARES IBOXX HIGH YLD CORP	USD	75.16	0.56%	1.04%	3.61%	-13.62%	NYSE Arca
FINANCIAL SELECT SECTOR SPDR	USD	35.99	0.42%	2.04%	10.33%	-7.84%	NYSE Arca
VANECK GOLD MINERS ETF	USD	28.71	1.59%	4.29%	19.97%	-10.37%	NYSE Arca
ISHARES RUSSELL 2000 ETF	USD	185.19	0.26%	0.51%	6.77%	-16.75%	NYSE Arca
SPDR GOLD SHARES	USD	163.08	0.62%	-1.24%	6.14%	-4.61%	NYSE Arca
ISHARES 20+ YEAR TREASURY BO	USD	103.25	1.74%	1.82%	11.74%	-30.33%	NASDAQ GM
INVESTCO QQQ TRUST SERIES 1	USD	288.82	1.00%	1.18%	3.72%	-27.40%	NASDAQ GM
ISHARES BIOTECHNOLOGY ETF	USD	133.55	-0.37%	-0.49%	9.31%	-12.50%	NASDAQ GM
ENERGY SELECT SECTOR SPDR	USD	92.21	-1.08%	0.05%	5.58%	66.14%	NYSE Arca
PROSHARES ULTRA VIX ST FUTUR	USD	7.68	-3.27%	-14.67%	-34.75%	-38.21%	Cboe BZX
UNITED STATES OIL FUND LP	USD	67.41	-3.67%	-6.43%	-4.22%	24.01%	NYSE Arca
ISHARES MSCI BRAZIL ETF	USD	29.60	0.44%	-0.44%	-7.44%	5.45%	NYSE Arca
SPDR S&P OIL & GAS EXP & PR	USD	154.64	-1.58%	-0.86%	4.75%	61.30%	NYSE Arca
UTILITIES SELECT SECTOR SPDR	USD	70.53	1.12%	2.78%	10.48%	-1.47%	NYSE Arca
ISHARES US REAL ESTATE ETF	USD	87.62	0.14%	1.62%	11.18%	-24.56%	NYSE Arca
SPDR S&P BIOTECH ETF	USD	81.00	0.04%	-0.60%	3.21%	-27.65%	NYSE Arca
ISHARES IBOXX INVESTMENT GRA	USD	107.66	1.00%	1.19%	8.28%	-18.76%	NYSE Arca
ISHARES JP MORGAN USD EMERGI	USD	85.02	0.65%	0.79%	9.15%	-22.04%	NASDAQ GM
REAL ESTATE SELECT SECT SPDR	USD	38.57	0.16%	1.74%	11.31%	-25.55%	NYSE Arca
ISHARES CHINA LARGE-CAP ETF	USD	25.77	1.30%	-2.05%	19.69%	-29.55%	NYSE Arca
CONSUMER STAPLES SPDR	USD	76.20	0.34%	3.10%	8.62%	-1.18%	NYSE Arca
VANECK JUNIOR GOLD MINERS	USD	35.69	1.94%	5.97%	21.98%	-14.88%	NYSE Arca
SPDR BLOOMBERG HIGH YIELD BO	USD	92.16	0.56%	1.05%	3.54%	-15.11%	NYSE Arca
VANGUARD REAL ESTATE ETF	USD	86.49	0.08%	1.74%	10.69%	-25.45%	NYSE Arca
GRAYSCALE BITCOIN TRUST BTC	USD	9.23	9.31%	0.33%	-20.09%	-73.05%	OTC US

USA Treasury Bonds Yield Curve (%)



Source: Bloomberg

LIMA

Stocks

Ticker	Currency	Price	1D*	5D*	30D*	YTD*	Frequency	Volume (US\$)	Beta	Dividend Yield (%)	Price Earning	Market Cap. (M US\$)	Economic Sector*	Index Weight
▲ ALICORC1 PE**	S/.	7.20	0.06%	0.07%	-0.18%	-5.18%	100.00%	6,106,682	0.72	3.47	11.18	1,591.17	Industrial	3.53%
- ATACOCB1 PE**	S/.	0.07	0.00%	0.00%	-12.50%	-41.67%	31.58%	3		0.00	-	17.17	Mining	1.02%
▲ BACKUS1 PE**	S/.	24.35	1.46%	-0.81%	2.31%	18.78%	89.47%	7,105	0.78	14.09	7.58	8,535.15	Industrial	0.82%
▲ BAP PE**	US\$	154.07	0.50%	-0.89%	15.84%	24.47%	100.00%	356,422	1.20	2.60	-	12,251.65	Diverse	5.82%
▲ BVN PE**	US\$	8.25	1.85%	4.04%	27.91%	13.01%	94.74%	377,932	1.66	0.85	-	2,273.99	Mining	5.88%
▲ CASAGRC1 PE**	S/.	8.01	0.12%	-1.72%	-11.00%	-11.98%	89.47%	22,742	0.77	76.48	7.40	175.16	Agricultural	1.31%
▲ BBVAC1 PE**	S/.	1.63	1.87%	1.87%	7.24%	-1.81%	89.47%	61,028	0.57	6.48	6.07	3,123.74	Finance	2.85%
▼ CORARE1 PE**	S/.	1.35	-0.74%	-1.46%	-7.53%	-21.51%	84.21%	51,613	0.74	11.23	4.37	507.96	Industrial	1.72%
▲ CPACASC1 PE**	S/.	3.95	2.60%	-1.25%	-5.95%	-20.20%	100.00%	70,972	0.73	10.63	10.97	474.38	Industrial	2.38%
- CVERDEC1 PE**	US\$	29.55	0.00%	-4.68%	1.90%	-20.63%	68.42%	33,644	0.97	6.28	10.40	10,344.15	Mining	5.25%
▲ ENGEPEC1 PE**	S/.	4.15	6.14%	46.64%	59.62%	46.13%	89.47%	434,216	0.79	14.73	9.35	1,883.01	Public Services	1.44%
▲ ENDISPC1**	S/.	6.40	1.91%	56.10%	60.80%	60.00%	73.68%	152,826	0.83	6.53	9.70	1,060.93	Public Services	0.98%
▲ FERREYC1 PE**	S/.	2.23	0.45%	-0.89%	1.36%	8.78%	100.00%	53,874	0.70	11.65	4.46	547.68	Diverse	4.90%
- AENZAC1 PE**	S/.	0.75	0.00%	-1.32%	4.17%	-45.26%	57.89%	3,161		0.00	-	233.05	Diverse	4.05%
▼ IFS PE**	US\$	24.00	-1.03%	2.52%	9.09%	-10.61%	84.21%	69,014	0.83	10.00	7.00	2,770.03	Diverse	7.22%
▼ INRETC1 PE**	US\$	35.05	-1.27%	0.11%	1.59%	0.29%	94.74%	10,515	0.87	3.91	18.98	3,811.58	Diverse	5.28%
- LUSURC1 PE**	S/.	16.40	0.00%	5.81%	17.14%	15.17%	94.74%	18,025	0.00	0.00	13.44	2,073.16	Public Services	1.81%
▼ MINSURI1 PE**	S/.	3.50	-4.11%	-6.67%	-2.78%	-11.39%	100.00%	858,142	1.10	20.79	1.45	2,619.48	Mining	3.09%
- PML PE**	US\$	0.09	0.00%	0.00%	0.00%	-25.00%	10.53%	13		0.00	-	24.32	Mining	2.12%
▼ SCCO PE**	US\$	59.07	-0.46%	0.08%	29.11%	-4.39%	73.68%	1,181	1.49	5.93	16.40	45,666.93	Industrial	2.12%
- SIDERC1 PE**	S/.	1.59	0.00%	2.58%	-3.64%	-0.62%	89.47%	3,789	0.68	27.74	4.62	288.93	Mining	2.14%
▲ TV PE**	US\$						0.00%		1.21	0.00	-	#N/A N/A	Industrial	1.43%
▲ UNACEMC1 PE**	S/.	1.78	0.56%	1.71%	2.89%	-25.83%	73.68%	32,675	1.02	6.18	-	840.13	Mining	2.93%
▲ VOLCABC1 PE**	S/.	0.52	1.96%	-1.89%	4.00%	-13.33%	100.00%	153,163	1.37	0.00	29.17	550.30	Industrial	3.00%
- BROCALC1 PE**	S/.	5.94	0.00%	3.48%	14.23%	14.23%	26.32%	6,168	0.00	0.00	43.38	247.46	Mining	5.90%
- RIMSEGC1 PE**	S/.	0.78	0.00%	0.00%	0.00%	-9.30%	10.53%	8,636	0.00	0.00	11.52	334.47	Finance	3.09%
- CORAREC1 PE**	US\$	1.92	0.00%	1.05%	0.00%	1.05%	26.32%	400	0.00	0.00	6.22	1,956.70	Mining	2.12%
- ENGIEC1 PE**	S/.	4.85	0.00%	-2.02%	-3.00%	-17.24%	57.89%	90	#N/A N/A	0.00	13.64	757.16	Diversas	2.12%
▼ GBVLAC1 PE**	S/.	2.16	-3.14%	-3.14%	-8.09%	-20.59%	26.32%	23,819	0.00	9.25	-	102.11	Diversas	2.14%

Quantity of shares: 28
Source: Bloomberg, Economática
* Bloomberg Industry Classification System
** PER is used in the stock market and original currency of the instrument

Up 12
Down 6
Hold 10

*Legend: Variation 1D: 1 Day; 5D: 5 Days; 1M: 1 Month; YTD: Var.% 12/31/21 to date

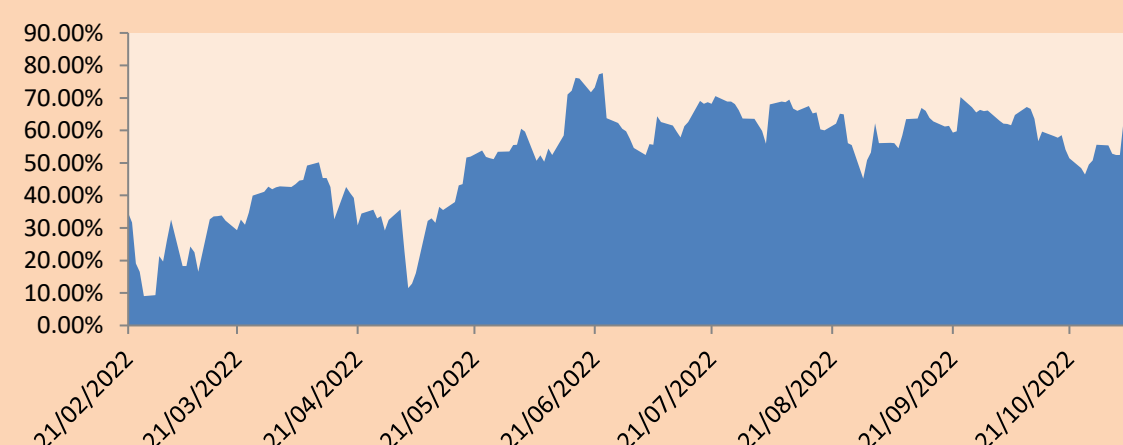
Sectorial Indices

	Close	1D*	5D*	30D*	YTD*	Beta
▲ S&P/BVLMining	395.40	0.36%	0.81%	19.70%	-3.94%	1.41
▲ S&P/BVLConsumer	1,302.85	1.06%	0.21%	5.56%	13.49%	0.59
▲ S&P/BVLIndustrials	241.38	0.64%	0.03%	2.51%	-6.47%	0.46
▲ S&P/BVLFinancials	1,086.53	0.76%	0.12%	11.08%	19.91%	1.25
▲ S&P/BVLConstruction	236.74	0.73%	0.48%	3.09%	-16.46%	0.43
▲ S&P/BVLPublicSvcs	784.84	2.78%	25.17%	31.62%	43.09%	0.00
▲ S&P/BVLElectricUtil	766.20	2.78%	25.17%	31.62%	43.09%	0.00

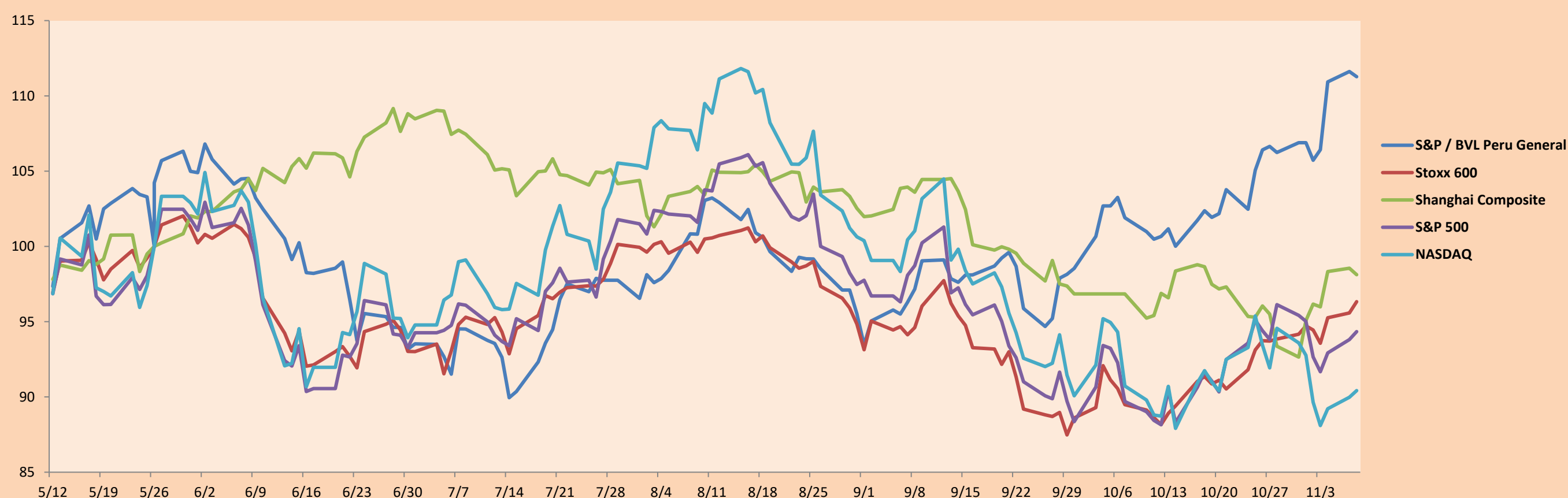
S&P/BVLConstructionTRPEN

*Legend: Variation 1D: 1 Day; 5D: 5 Days; 1M: 1 Month; YTD: Var.% 12/31/21 to date

Correlation Graph of Returns of Mining Index against Metallic Index of London (3 months)



Indices (6 months)



Base: 26/05/22=100
Source: Bloomberg

Capital Market Laboratory Coordinator: MS Javier Penny Pestana
Collaboration: Mariafe Urrutia, Fedele Calle, Nikolas Díaz y Nadia Contreras
email: pulsobursatil@ulima.edu.pe
facebook: www.facebook.com/pulsobursatil.ul

SOVEREIGN RATING

RISK RATINGS

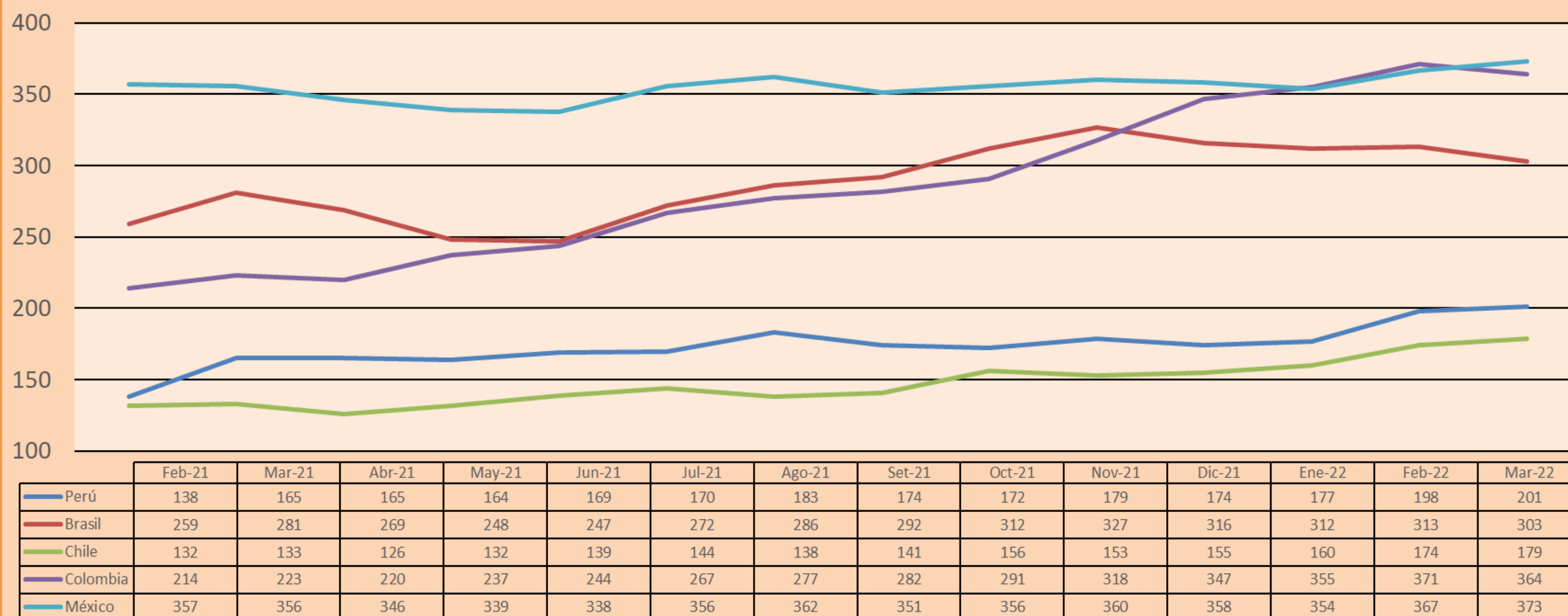
Moody's	S&P	Fitch	
Aaa	AAA	AAA	Prime
Aa1	AA+	AA+	High credit quality
Aa2	AA	AA	
Aa3	AA-	AA-	
A1	A+	A+	Medium-high grade, with low credit risk
A2	A	A	
A3	A-	A-	
Baa1	BBB+	BBB+	Moderate Credit Risk
Baa2	BBB	BBB	
Baa3	BBB-	BBB-	
Ba1	BB+	BB+	It has speculative elements and it is subject to substantial credit risk
Ba2	BB	BB	
Ba3	BB-	BB-	
B1	B+	B+	It is considered speculative and it has high credit risk
B2	B	B	
B3	B-	B-	
Caa1	CCC+	CCC	
Caa2	CCC	CCC	
Caa3	CCC-	CCC	
Ca	CC	CC	Very close to default or in default
	C	CC	
C	D	DD	

Source: Bloomberg

Latin America Credit Rating			
Clasificadora de riesgo			
Country	Moody's	Fitch	S&P
Peru	Baa1	BBB	BBB
México	Ba2	BB-	BB-
Venezuela	C	WD	NR
Brazil	Ba2	BB-	BB-
Colombia	Baa2	BB+	BB+
Chile	A2	A-	A
Argentine	Ca	WD	CCC+
Panama	Baa2	BBB-	BBB

Source: Bloomberg

LATAM Country Risk(bps)



Source: BCRP

Capital Market Laboratory Coordinator: MS Javier Penny Pestana
Collaboration: Mariafe Urrutia, Fedele Calle, Nikolas Díaz y Nadia Contreras
email: pulsobursatil@ulima.edu.pe
facebook: www.facebook.com/pulsobursatil.ul