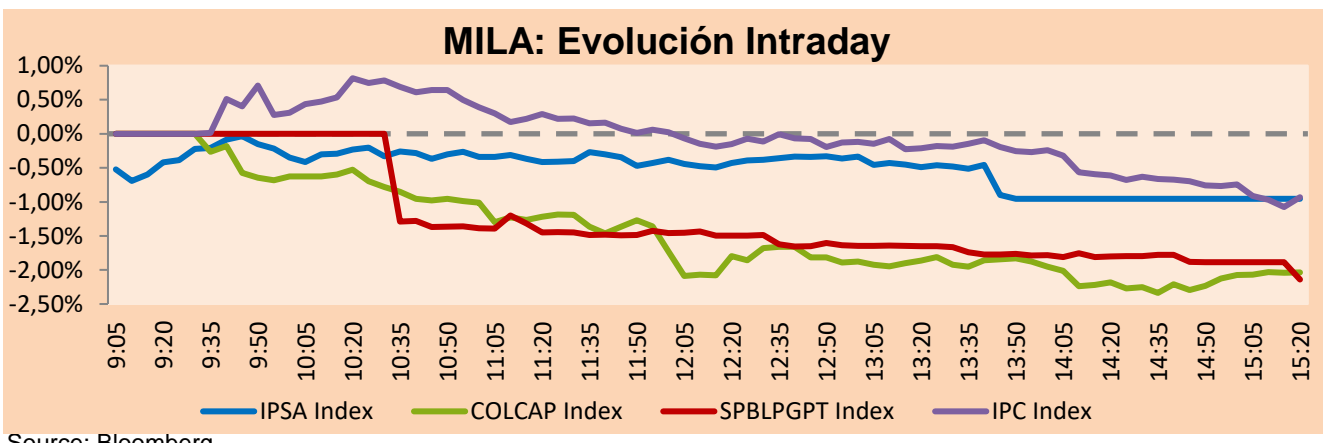


MILA

Lima, november 28, 2022

Main Indexes	Close	1 D	5 D	1 M	YTD	Cap. Burs. (US\$ bill)
▼ IPSA (Chile)	5.207,64	-0,80%	-1,98%	0,27%	20,87%	101,06
▼ IGPA (Chile)	27.855,61	-1,03%	-3,33%	-0,88%	29,16%	116,52
▲ COLSC (Colombia)	937,37	0,31%	1,97%	2,70%	-3,67%	3,30
▼ COLCAP (Colombia)	1.240,99	-1,99%	0,77%	1,75%	-12,05%	55,55
▼ S&P/BVL (Perú)*	22.013,22	-2,11%	0,57%	4,99%	4,27%	94,94
▼ S&P/BVL SEL (Perú)	565,94	-2,89%	-0,92%	2,99%	0,42%	80,00
▼ S&P/BVL LIMA 25	30.411,60	-1,89%	0,56%	3,76%	0,45%	94,42
▼ IPC (México)	51.081,33	-1,14%	-0,95%	4,06%	-4,11%	336,69
▼ S&P MILA 40	443,51	-0,80%	1,97%	5,04%	-0,30%	6.497,94

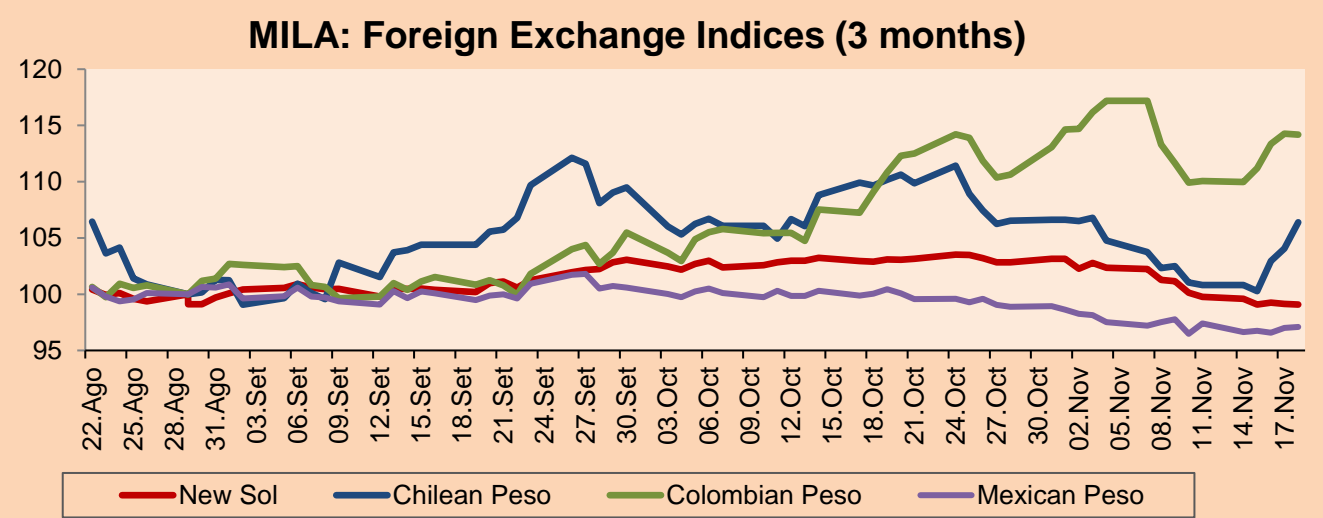
*Legend: Variation 1D: 1 day; 5D: 5 days; 1M: 1 Month; YTD: Var% 12/31/21 to date



Source: Bloomberg

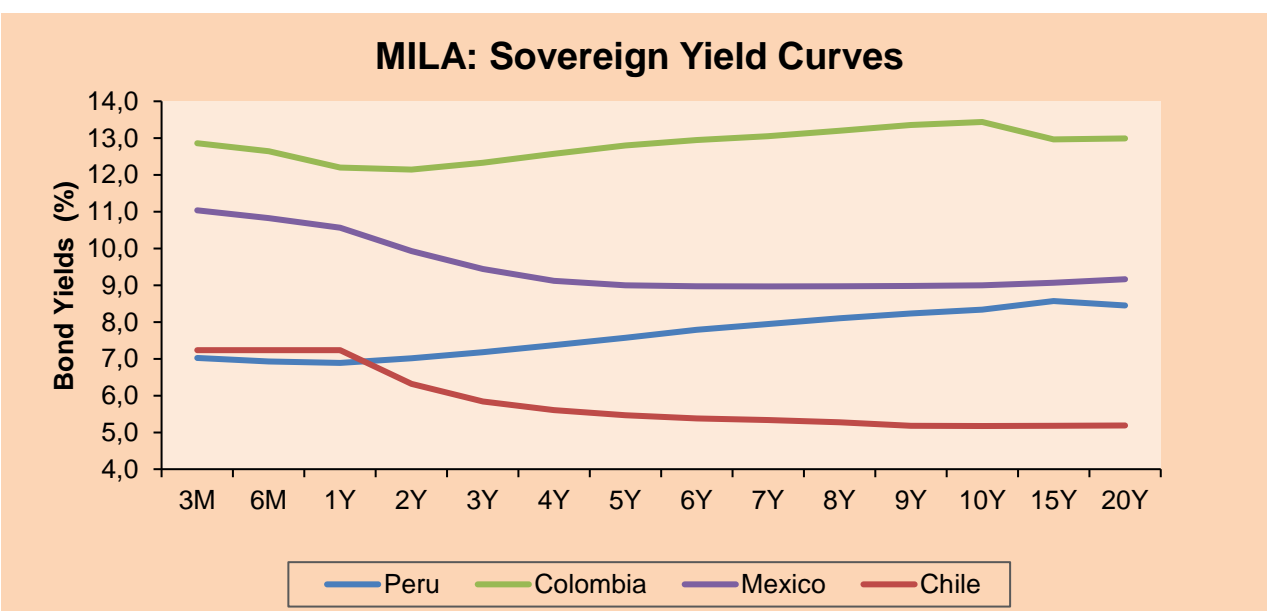
Currency	Price	1D*	5D*	30 D*	YTD*
▼ Sol (PEN)	3,8481	-0,25%	0,16%	-3,32%	-3,78%
▼ Chilean Peso (CLP)	913,30	-1,05%	-3,06%	-3,09%	7,19%
▼ Colombian Peso (COP)	4.834,51	-0,65%	-2,25%	0,02%	18,48%
▼ Mexican Peso (MXN)	19,30	-0,17%	-1,25%	-2,51%	-5,99%

*Legend: Variation 1D: 1 day; 5D: 5 days; 1M: 1 Month; YTD: Var% 12/31/21 to date



Base: 29/08/22=100
Source: Bloomberg

Fixed Income	Currency	Price	Bid Yield (%)	Ask Yield (%)	Duration
PERU 7.35 07/21/25	USD	105,647	5,15	4,93	2,33
PERU 4.125 08/25/27	USD	97,273	4,84	4,71	4,17
PERU 8.75 11/21/33	USD	123,88	5,84	5,72	7,41
PERU 6.55 03/14/37	USD	107,004	5,87	5,77	8,83
PERU 5.625 11/18/2050	USD	99,475	5,69	5,63	13,85
CHILE 2.25 10/30/22	USD	99,938	54,01	-27,10	#N/A N/A
CHILE 3.125 01/21/26	USD	95,247	4,85	4,69	2,90
CHILE 3.625 10/30/42	USD	77,624	5,54	5,43	13,14
COLOM 11.85 03/09/28	USD	118,788	7,53	7,41	3,92
COLOM 10.375 01/28/33	USD	108,925	9,19	8,83	6,17
COLOM 7.375 09/18/37	USD	92,059	8,38	8,26	8,53
COLOM 6.125 01/18/41	USD	78,445	8,53	8,42	9,60
MEX 4 10/02/23	USD	78,445	8,525	8,418	9,6
MEX5.55 01/45	USD	92,836	6,18	6,11	12,03



Source: Bloomberg

Equity

Largest gains	Exchange	Currency	Price	▲%	Largest losses	Exchange	Currency	Price	▼%
BECLE SAB DE CV	Mexico	MXN	44,44	3,95	GRUPO NUTRESA SA	Colombia	COP	54600	-5,06
ENEL AMERICAS SA	Chile	CLP	94,00	3,87	ORBIA ADVANCE CO	Mexico	MXN	38,32	-3,89
ENEL CHILE SA	Chile	CLP	35,50	2,75	ISA SA	Colombia	COP	18670	-3,11
GRUPO F BANORT-O	Mexico	MXN	152,84	2,46	SURAMERICANA	Colombia	COP	41000	-2,15
KIMBERLY-CLA M-A	Mexico	MXN	32,91	2,46	BANCO DAVIENDA	Colombia	COP	26910	-1,79

Per Turnover	Exchange	Amount (US\$)	Per Volume	Exchange	Volume
SOQUIMICH-B	Chile	58.038.757	ITAU CORPBANCA	Chile	305.400.166
GRUPO F BANORT-O	Mexico	38.501.206	BANCO SANTANDER	Chile	183.619.130
AMERICA MOVIL-L	Mexico	37.823.913	ENEL CHILE SA	Chile	71.407.607
WALMART DE MEXIC	Mexico	32.868.997	ENEL AMERICAS SA	Chile	52.396.748
FOMENTO ECON-UBD	Mexico	18.625.672	BANCO DE CHILE	Chile	43.404.233

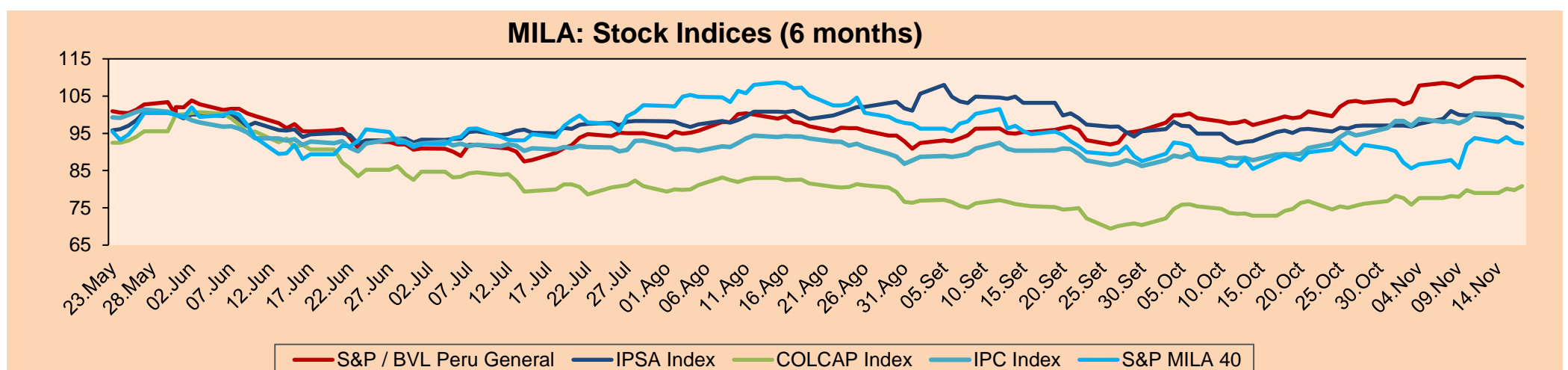
MILA

Peru: The BVL General index ended today's session with a negative result of -2.11%. The index maintains a positive annual cumulative trend of +4.27% in local currency and a positive cumulative trend of +8.36% in dollar-adjusted currency. With respect to the S&P/BVL Peru SEL, it varied by -2.89% while the S&P/BVL LIMA 25 by -1.89%. The PEN spot reached S/.3.8481. Headline: "Cálidda: "We will invest more than US \$120 million in natural gas networks by 2023".

Chile: The IPSA index ended the day with a negative return of -0.80%. The least benefited sectors of the day were Non-Basic Consumer Products (-4.00%) and Materials (-2.45%). The best performing stocks were Ripley Corp SA (-3.89%) and Falabella SA (-3.84%). Headline: Labor income recorded its worst performance of the year due to construction and the public sector.

Colombia: The COLCAP index ended the session with a negative return of -1.99%. The worst performing sectors of the day were Finance (-2.94%) and Energy (-2.32%). The worst performing stocks were Mineros SA (-7.69%) and Grupo Aval Acciones y Valores SA (-7.46%). Headline: The Government will sell bonds in dollars to pay debt during 2023 and until 2024.

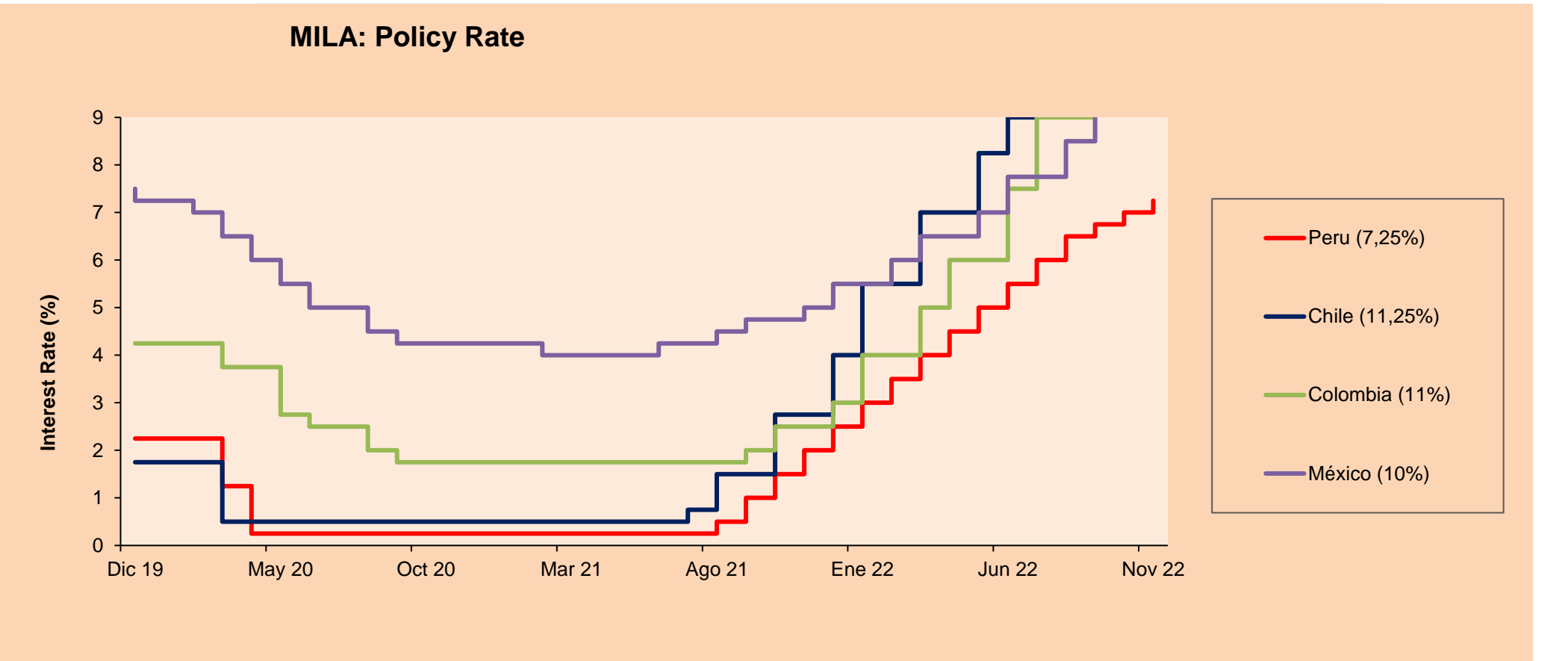
Mexico: The IPC index closed the day in negative territory of -1.14%. The least benefited sectors of the day were Communication Services (-2.17%) and Materials (-1.88%). The worst performing stocks were Grupo Bimbo SAB de CV (-3.17%) and Grupo México SAB de CV (-2.95%). Headline: GDP records 0.89% increase in third quarter; four consecutive expansions.



Base: 23/05/22=100
Source: Bloomberg

ETFs

ETFs	Curr.	Close	1D	5D	30 D	YTD	Exchange
▼ iShares MSCI All Peru Caped Index Fund	USD	28,51	-2,93%	0,49%	7,71%	-3,75%	NYSE Arca
▼ iShares MSCI All Chile Caped Index Fund	USD	25,33	-1,57%	-2,20%	-0,28%	9,70%	Cboe BZX
Global X MSCI Colombia	USD						
▼ iShares MSCI Mexico Capped	USD	53,41	-1,09%	0,72%	7,29%	5,55%	NYSE Arca
▼ iShares MSCI Emerging Markets	USD	37,6	-0,45%	0,13%	9,65%	-23,03%	NYSE Arca
▼ Vanguard FTSE Emerging Markets	USD	38,69	-0,23%	0,21%	8,74%	-21,78%	NYSE Arca
▼ iShares Core MSCI Emerging Markets	USD	46,33	-0,43%	0,24%	9,06%	-22,60%	NYSE Arca
▼ iShares JP Morgan Emerging Markets Bonds	USD	52,82	-0,79%	0,09%	4,18%	-15,92%	Cboe BZX
▼ Morgan Stanley Emerging Markets Domestic	USD	4,28	-0,23%	2,64%	5,94%	-21,90%	New York



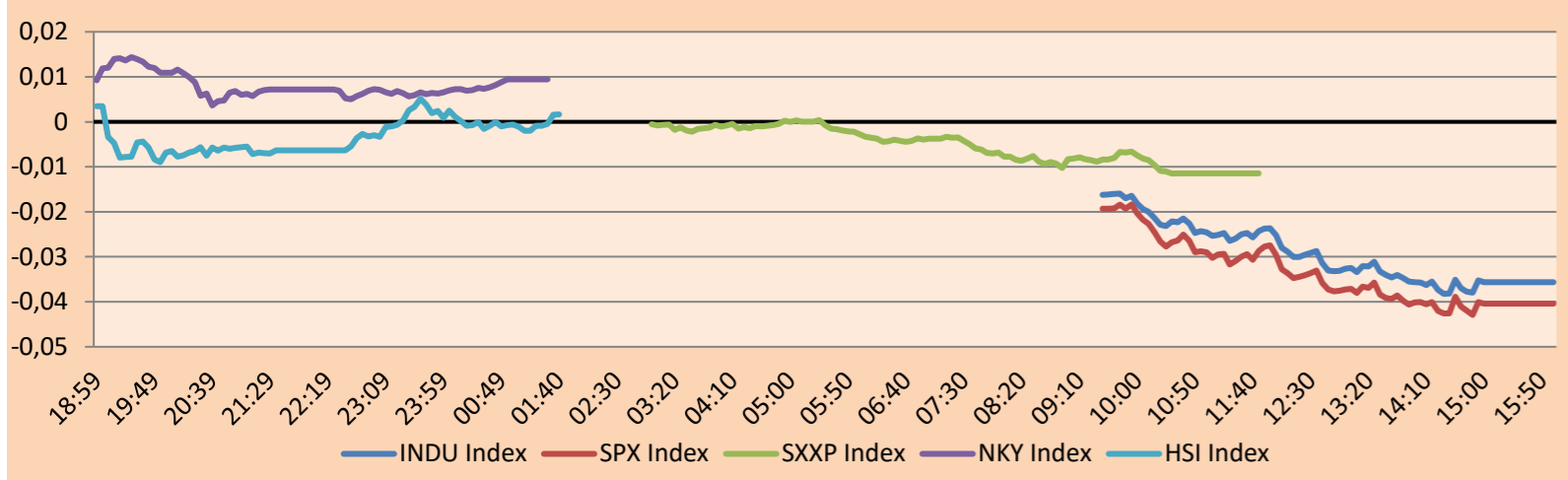
Source: Bloomberg

WORLD

Main Indices	Close	1 D*	5 D*	1 M*	YTD*	Market Cap. (US\$ Mill.)
▼ Dow Jones (USA)	33,849.46	-1.45%	0.31%	3.01%	-6.85%	10,160,117
▼ Standard & Poor's 500 (EEUU)	3,963.94	-1.54%	-0.04%	1.61%	-16.83%	35,151,243
▼ NASDAQ Composite (USA)	11,049.50	-1.58%	-0.87%	-0.48%	-29.37%	19,007,559
▼ Stoxx EUROPE 600 (Europe)	437.85	-0.65%	1.11%	6.60%	-10.24%	11,786,803
▼ DAX (Germany)	14,383.36	-1.09%	0.02%	8.61%	-9.45%	1,470,439
▼ FTSE 100 (United Kingdom)	7,474.02	-0.17%	1.32%	6.05%	1.21%	1,712,764
▼ CAC 40 (France)	6,665.20	-0.70%	0.46%	6.25%	-6.82%	2,115,656
▼ IBEX 35 (Spain)	8,323.20	-1.11%	1.65%	5.14%	-4.48%	540,902
▼ MSCI AC Asia Pacific Index	154.14	-0.45%	0.96%	13.71%	-20.18%	20,408,588
▼ HANG SENG (Hong kong)	17,297.94	-1.57%	-2.03%	16.38%	-26.07%	2,645,871
▼ SHANGHAI SE Comp. (China)	3,078.55	-0.75%	-0.21%	5.58%	-15.42%	6,059,712
▼ NIKKEI 225 (Japan)	28,162.83	-0.42%	0.94%	3.90%	-2.18%	3,570,412
▼ S&P / ASX 200 (Australia)	7,229.14	-0.42%	1.26%	6.53%	-2.89%	1,605,371
▼ KOSPI (South Korea)	2,408.27	-1.21%	-0.46%	6.17%	-19.12%	1,371,742

*Legend: Variation 1D: 1 Day; 5D: 5 Days; 1M: 1 Month; YTD: Var.% 12/31/21 to date

Mercado Evolución Intraday (var %)

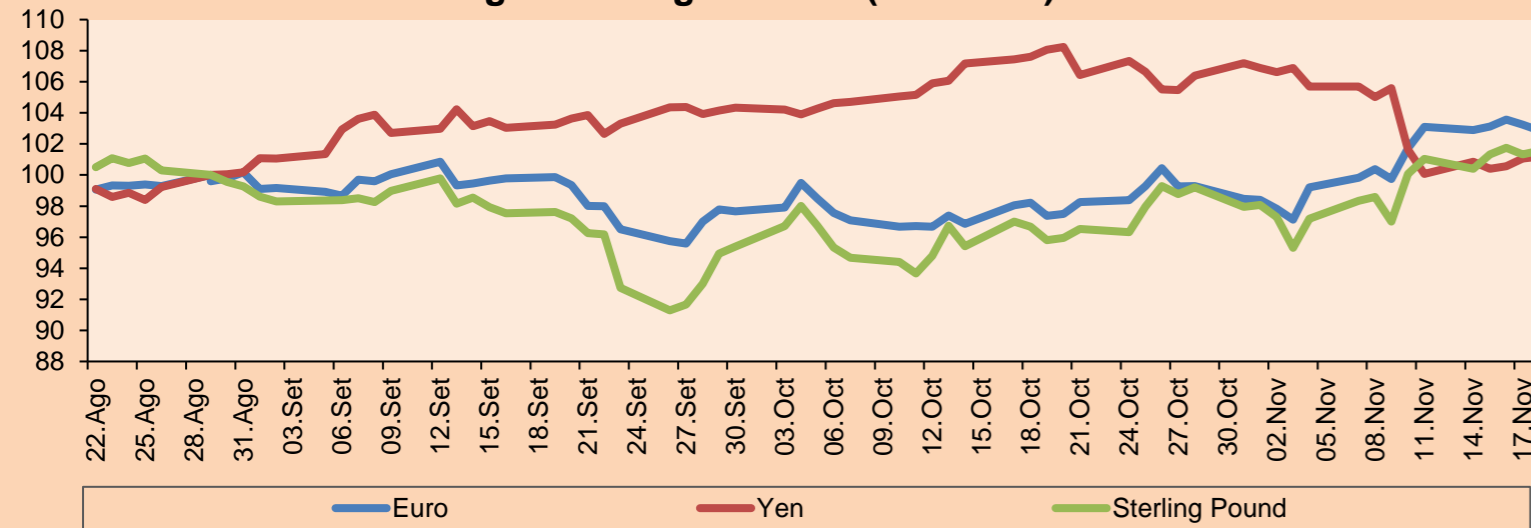


Source: Bloomberg

Currency	Price	1 D*	5 D*	1 M*	YTD*
▼ Euro	1,0341	-0.52%	0.97%	3.77%	-9.05%
▼ Yen	138,9200	-0.19%	-2.27%	-5.88%	20.72%
▼ Sterling Pound	1,1959	-1.10%	1.15%	2.96%	-11.62%
▲ Yuan	7,2069	0.58%	0.58%	-0.63%	13.39%
▲ Hong Kong Dollar	7,8139	0.01%	0.13%	-0.44%	0.22%
▼ Brazilian Real	5,3657	-0.61%	1.07%	1.33%	-3.77%
▲ Argentine Peso	166,6033	0.62%	2.11%	6.79%	62.17%

*Legend: Variation 1D: 1 Day; 5D: 5 Days; 1M: 1 Month; YTD: Var.% 12/31/21 to date

Foreign Exchange Indices (3 months)

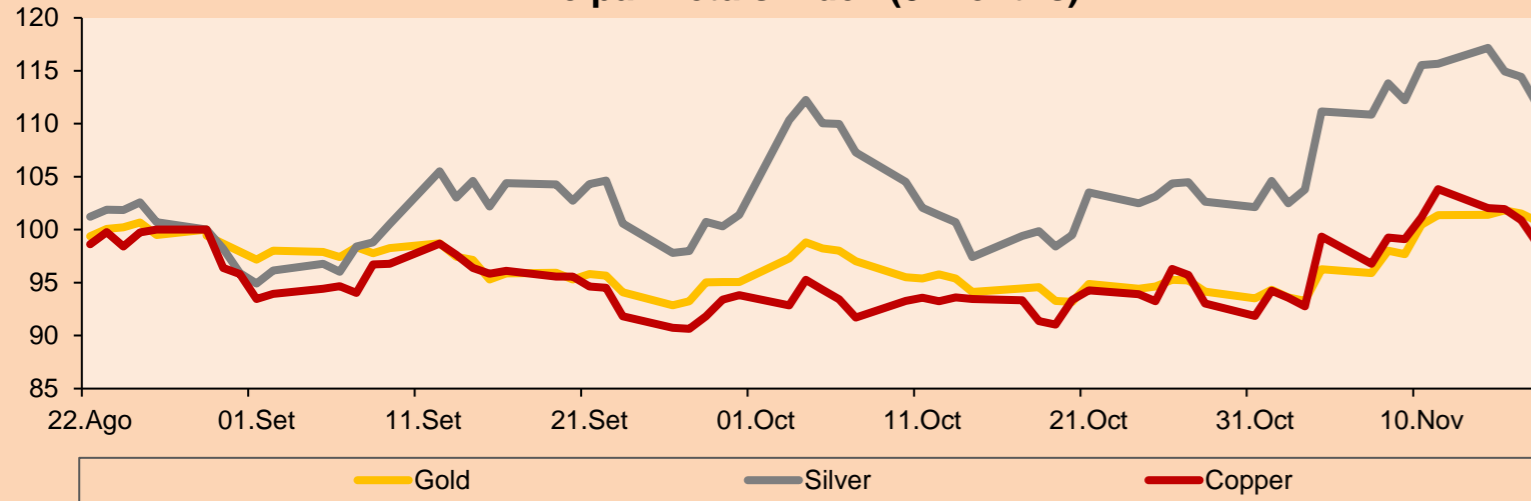


Base: 29/08/22=100
Source: Bloomberg

Commodities	Close	1 D*	5 D*	1 M*	YTD*
▼ Oro (US\$ Oz. T) (LME)	1,741.71	-0.75%	0.21%	5.89%	-4.78%
▼ Plata (US\$ Oz. T) (LME)	20.95	-3.64%	0.50%	8.80%	-10.10%
- Cobre (US\$ TM) (LME)	7,975.00	0.00%	1.72%	4.67%	-18.13%
- Zinc (US\$ TM) (LME)	2,920.75	0.00%	1.06%	2.27%	-18.64%
▲ Petróleo WTI (US\$ Barril) (NYM)	76.59	0.41%	-4.31%	-11.57%	10.55%
- Estaño (US\$ TM) (LME)	22,288.00	0.00%	4.92%	22.93%	-43.39%
- Plomo (US\$ TM) (LME)	2,105.50	0.00%	1.12%	5.09%	-9.93%
▲ Azúcar #11 (US\$ Libra) (NYB-ICE)	19.38	0.26%	-2.42%	10.24%	5.15%
▲ Cacao (US\$ TM) (NYB-ICE)	2,485.00	0.04%	1.30%	7.48%	-2.24%
▼ Café Arábica (US\$ TM) (NYB-ICE)	162.85	-1.33%	1.53%	-2.92%	-26.84%

*Leyenda: Variación 1D: 1 Día; 5D: 5 Días; 1M: 1 Mes; YTD: Var.% 31/12/21 a la fecha

Principal Metals Index (3 months)



Base: 29/08/22=100
Source: Bloomberg

Equity

Germany (Stocks from DAX Index)

Largest gains	Curr.	Price	▲ %	Exchange	Largest losses	Curr.	Price	▼ %	Exchange
MTX GY	EUR	197.5	-1.05	Xetra	MRK GY	EUR	175.85	-0.03	Xetra
FRE GY	EUR	25.84	0.54	Xetra	ADS GY	EUR	121.26	-2.19	Xetra
HEI GY	EUR	52.5	-0.98	Xetra	BEI GY	EUR	104.6	-0.19	Xetra
EOAN GY	EUR	9,086	-0.44	Xetra	HNR1 GY	EUR	178.9	-0.69	Xetra

Europe (Stocks from STOXX EUROPE 600)

Largest gains	Curr.	Price	▲ %	Exchange	Largest losses	Curr.	Price	▼ %	Exchange
IDS LN	GBP	235.5	-2.93	Londres	FPE3 GY	EUR	33.58	-2.04	Xetra
BKT SQ	EUR	6,248	-1.11	Soc.Bol SIBSE	BANB SE	CHF	91.3	-0.22	SIX Swiss Ex
CTEC LN	GBP	229.2	-0.95	Londres	SALM NO	NOK	337.4	-1.11	Oslo
JD/LN	GBP	124.5	-0.04	Londres	AKRBP NO	NOK	330.7	-2.07	Oslo

Global Overview:

United States:

The U.S. market closed with positive returns as gains in defensive stocks overshadowed declines in the energy sector, and investors ignored comments from Federal Reserve officials about interest rate hikes. The DOW JONES index closed with gains this session as Susan Collins, leader of the Federal Reserve Bank of Boston, said that with little evidence that price pressures are easing, the Fed may need another 75 basis point rate hike to try to control inflation. The S&P 500 index stalled this week after a month of gains after softer-than-expected inflation data sparked hopes that the central bank may moderate its market-punishing rate hikes. The S&P 500 index also ended with a negative return after a rise in Treasury yields caused investors to lose appetite for high-growth and technology stocks. Live Nation Entertainment shares plunged after The New York Times reported that the U.S. Justice Department was investigating whether Ticketmaster's parent company had abused its power over the multibillion-dollar live music industry. Finally, the tech-heavy NASDAQ index underperformed as rising Treasury yields dragged down high-growth and other technology stocks. Thus, DOW JONES +0.59%, S&P 500 +0.48% and NASDAQ +0.01% ended the day with positive results.

Europe:

Major European indices ended the session with negative returns. The pan-European STOXX 600 index closed lower, as household borrowing rose by 4.2% year-on-year, causing a slowdown in economic progress as borrowing costs rise and high inflation affects demand. The UK market, reflected in the FTSE 100, was hurt by the real estate and financial sectors. There is also an expectation that interest rates will rise by 50 to 75 basis points. Similarly, the German market, reflected in the DAX index, closed in negative territory driven by a 1.5% loss in oil stocks. In addition, investors expected central banks not to raise interest rates as much as previously thought amid cooling inflationary pressures and fears of a global economic recession. The French market closed negative as widespread protests in China against the strict zero Covid policy spooked investors, as this is how risks to the global economic outlook are assessed. Thus, the companies with the biggest losses were Brenntag SE (-9.65%) which specializes in the distribution of industrial and specialty chemicals, followed by Future PLC (-5.89%), a media company. Thus, FTSE 100 -0.17%; CAC 40 -0.70%; DAX -1.09%; STOXX 600 -0.65% ended at negative levels.

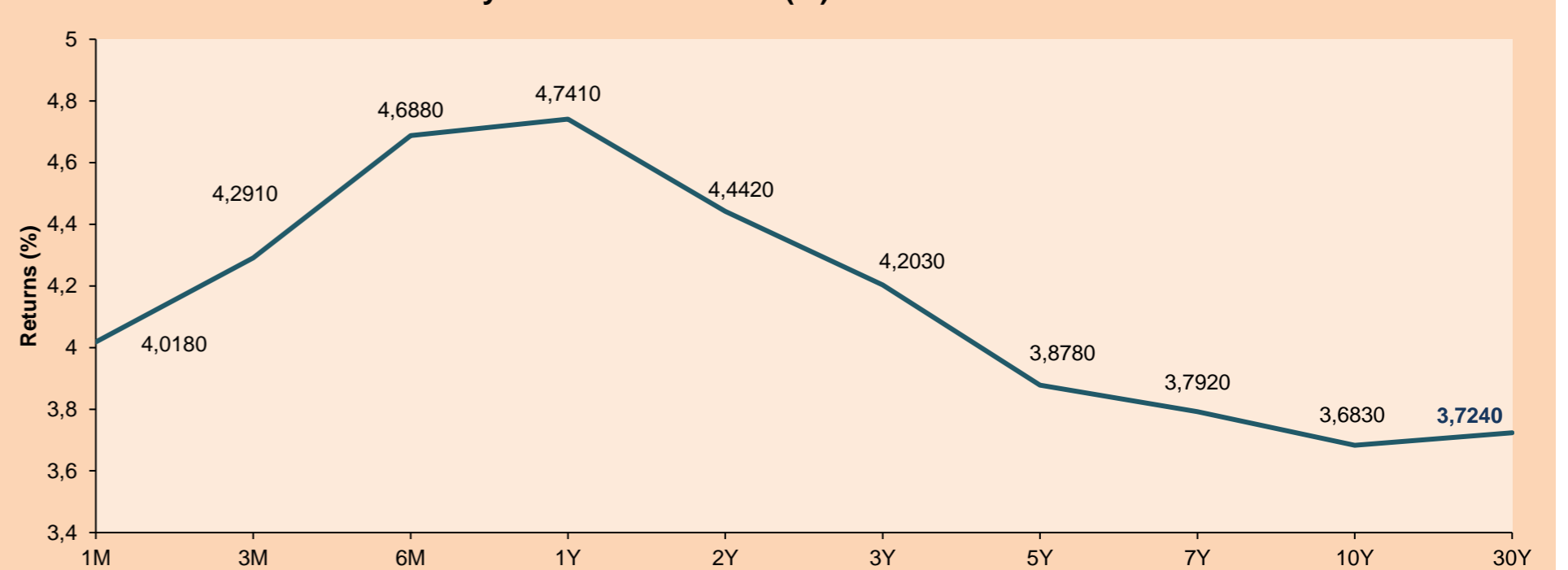
Asia:

Major Asian indices closed with negative returns, after recent monetary easing measures failed to offset investors' ongoing concerns about protests against tightening restrictions on Covid-19 in the Asian giant. The Foxconn plant's employees' unhappiness with the Chinese restrictions could lead to further drops in shipments. Thus, the Chinese market ended with negative returns with the Financials, Real Estate and Energy sectors falling between -1.5% and -2%. In line, the Hang Seng index closed lower with technology giants and real estate developers leading the decline. The South Korean market ended with losses given the risk averse sentiment generated by the situation in China. Shares of heavyweights such as Samsung Electronics fell -1.48% and its peer SK Hynix -2.35%. Meanwhile, LG Energy lost -1.58% and platforms such as Naver and kakao finished with -2.43% and -2.67%. The Japanese market closed with negative returns with technology stocks leading the decline. Chip manufacturing equipment makers Tokyo Electron and Advantest fell 1.56% and 0.54%, respectively. The Australian market ended lower, dragged down by lower commodity prices. Energy stocks were the hardest hit, falling 1.7%. On the other hand, mining stocks fell by 1% with iron ore giant BHP down 0.7%. Thus, NIKKEI +0.16%; HANG SENG -1.87%; CSI 300 -0.85%; S&P/ASX 200 -0.18%; KOSPI -1.02, SHANGHAI COMPOSITE -0.39% ended with mostly negative performances.

ETFs

	Curr.	Close	1D	5D	30 D	YTD	Exchange
SPDR S&P 500 ETF TRUST	USD	395.91	-1.60%	0.33%	1.77%	-16.64%	NYSE Arca
ISHARES MSCI EMERGING MARKET	USD	37.60	-0.45%	0.13%	9.65%	-23.03%	NYSE Arca
ISHARES IBOXX HIGH YLD CORP	USD	74.22	-1.05%	0.03%	-0.44%	-14.70%	NYSE Arca
FINANCIAL SELECT SECTOR SPDR	USD	35.49	-1.72%	0.03%	3.80%	-9.12%	NYSE Arca
VANECK GOLD MINERS ETF	USD	27.30	-4.01%	0.44%	10.44%	-14.77%	NYSE Arca
ISHARES RUSSELL 2000 ETF	USD	181.84	-2.02%	-0.50%	-0.72%	-18.26%	NYSE Arca
SPDR GOLD SHARES	USD	161.93	-0.79%	0.03%	5.73%	-5.28%	NYSE Arca
ISHARES 20+ YEAR TREASURY BO	USD	103.19	0.28%	3.13%	6.60%	-30.37%	NASDAQ GM
INVESTCO QQQ TRUST SERIES 1	USD	282.71	-1.47%	0.29%	0.53%	-28.94%	NASDAQ GM
ISHARES BIOTECHNOLOGY ETF	USD	132.89	-0.69%	-0.08%	2.48%	-12.93%	NASDAQ GM
ENERGY SELECT SECTOR SPDR	USD	89.35	-2.74%	-1.15%	0.11%	60.99%	NYSE Arca
PROSHARES ULTRA VIX ST FUTUR	USD	8.16	5.43%	-2.63%	-18.64%	-34.35%	Cboe BZX
UNITED STATES OIL FUND LP	USD	66.88	-0.12%	-3.11%	-8.16%	23.03%	NYSE Arca
ISHARES MSCI BRAZIL ETF	USD	29.65	0.24%	-1.56%	-5.72%	5.63%	NYSE Arca
SPDR S&P OIL & GAS EXP & PR	USD	148.97	-3.67%	-1.34%	-0.20%	55.39%	NYSE Arca
UTILITIES SELECT SECTOR SPDR	USD	70.21	-1.03%	1.52%	4.15%	-1.91%	NYSE Arca
ISHARES US REAL ESTATE ETF	USD	85.77	-2.76%	-1.48%	2.00%	-26.15%	NYSE Arca
SPDR S&P BIOTECH ETF	USD	79.65	-1.74%	-0.28%	-4.91%	-28.86%	NYSE Arca
ISHARES IBOXX INVESTMENT GRA	USD	106.99	-0.72%	1.27%	5.00%	-19.27%	NYSE Arca
ISHARES JP MORGAN USD EMERGI	USD	85.07	-0.40%	1.76%	6.15%	-22.00%	NASDAQ GM
REAL ESTATE SELECT SECT SPDR	USD	37.71	-2.81%	-1.59%	2.42%	-27.21%	NYSE Arca
ISHARES CHINA LARGE-CAP ETF	USD	25.55	0.87%	-0.54%	18.62%	-30.15%	NYSE Arca
CONSUMER STAPLES SPDR	USD	75.96	-0.38%	0.76%	3.81%	-1.49%	NYSE Arca
VANECK JUNIOR GOLD MINERS	USD	33.42	-5.14%	0.00%	11.59%	-20.30%	NYSE Arca
SPDR BLOOMBERG HIGH YIELD BO	USD	90.99	-1.03%	0.05%	-0.49%	-16.19%	NYSE Arca
VANGUARD REAL ESTATE ETF	USD	84.71	-2.68%	-1.44%	1.97%	-26.98%	NYSE Arca
GRAYSCALE BITCOIN TRUST BTC	USD	8.84	-2.10%	6.76%	-26.70%	-74.19%	OTC US

USA Treasury Bonds Yield Curve (%)



Source: Bloomberg

LIMA

Stocks

Ticker	Currency	Price	1D*	5D*	30D*	YTD*	Frequency	Volume (US\$)	Beta	Dividend Yield (%)	Price Earning	Market Cap. (M US\$)	Economic Sector*	Index Weight
▲ ALICORC1 PE**	S/.	6,80	0,31%	1,97%	2,70%	-3,67%	100,00%	232.123	0,72	3,68	10,56	1.504,78	Industrial	3,53%
- ATACOCB1 PE**	S/.	0,07	0,00%	0,00%	-12,50%	-41,67%	35,00%	1.871	#N/A N/A	0,00	-	17,68	Mining	1,02%
- BACKUS1 PE**	S/.	24,35	0,00%	-0,20%	1,46%	18,78%	100,00%	1.653	0,78	0,00	7,58	8.544,03	Industrial	0,82%
▼ BAP PE**	US\$	148,35	-3,84%	-1,10%	3,02%	19,85%	100,00%	291.515	1,20	2,70	-	11.796,79	Diverse	5,82%
▼ BVN PE**	US\$	7,69	-3,15%	-2,04%	14,26%	5,34%	100,00%	172.857	1,66	0,91	-	2.119,63	Mining	5,88%
- CASAGRC1 PE**	S/.	8,00	0,00%	2,56%	-1,96%	-12,09%	80,00%	1.766	0,76	0,00	7,39	175,12	Agricultural	1,31%
- BBVAC1 PE**	S/.	1,65	0,00%	3,12%	4,43%	-0,60%	100,00%	13.626	0,55	6,40	6,14	3.165,36	Finance	2,85%
- CORARE1 PE**	S/.	1,40	0,00%	3,70%	-2,78%	-18,60%	95,00%	379	0,74	0,00	4,53	517,80	Industrial	1,72%
- CPACASC1 PE**	S/.	4,00	0,00%	3,90%	-4,08%	-19,19%	100,00%	7.700	0,74	10,50	11,11	476,19	Industrial	2,38%
▼ CVERDEC1 PE**	US\$	29,60	-0,03%	-1,27%	-0,34%	-20,49%	75,00%	142.735	0,98	6,27	10,42	10.361,66	Mining	5,25%
▲ ENGEPEC1 PE**	S/.	4,92	2,50%	27,79%	75,71%	73,24%	95,00%	2.300.792	0,84	12,43	11,08	2.234,71	Public Services	1,44%
- ENDISPC1**	S/.	7,20	0,00%	24,78%	70,21%	80,00%	85,00%	752.471	0,89	5,81	10,91	1.194,79	Public Services	0,98%
- FERREYC1 PE**	S/.	2,27	0,00%	3,18%	0,89%	10,73%	100,00%	38.454	0,69	11,44	4,54	558,08	Diverse	4,90%
▼ AENZAC1 PE**	S/.	0,60	-20,00%	-14,29%	-18,92%	-56,20%	70,00%	14.770	#N/A N/A	0,00	-	186,63	Diverse	4,05%
▼ IFS PE**	US\$	22,79	-2,40%	-3,84%	-5,04%	-15,12%	100,00%	66.083	0,85	10,53	6,65	2.630,38	Diverse	7,22%
▼ INRETC1 PE**	US\$	35,30	-0,98%	0,83%	2,32%	1,00%	95,00%	54.865.650	0,86	3,88	19,13	3.838,77	Diverse	5,28%
▼ LUSURC1 PE**	S/.	16,25	-1,81%	-0,91%	9,06%	14,12%	95,00%	50.117	0,00	6,66	13,32	2.056,33	Public Services	1,81%
- MINSURI1 PE**	S/.	3,60	0,00%	-1,37%	0,00%	-8,86%	95,00%	32.602	1,09	20,21	1,49	2.697,13	Mining	3,09%
- PML PE**	US\$	0,09	0,00%	0,00%	0,00%	-25,00%	10,00%	13	#N/A N/A	0,00	-	24,32	Mining	2,12%
- SCCO PE**	US\$	58,71	0,00%	3,00%	24,91%	-4,97%	85,00%	144.620	1,49	0,00	16,30	45.388,61	Industrial	2,12%
▼ SIDERC1 PE**	S/.	1,56	-1,89%	-1,89%	-6,02%	-2,50%	95,00%	13.436	0,65	28,27	4,53	283,78	Mining	2,14%
- UNACEMC1 PE**	S/.	1,77	0,00%	4,12%	3,51%	-26,25%	80,00%	1.464	1,03	0,00	-	836,28	Mining	2,93%
▼ VOLCABC1 PE**	S/.	0,50	-1,96%	-3,85%	-3,85%	-16,67%	100,00%	36.402	1,37	0,00	28,03	529,69	Industrial	3,00%
- BROCALC1 PE**	S/.	5,94	0,00%	0,00%	18,80%	14,23%	35,00%	6.174	0,00	0,00	43,35	247,37	Mining	5,90%
- RIMSEGC1 PE**	S/.	0,78	0,00%	0,00%	0,00%	-9,30%	30,00%	624	0,00	0,00	11,52	334,82	Finance	3,09%
- CORAREC1 PE**	US\$	1,95	0,00%	1,56%	0,00%	2,63%	30,00%	185.800	0,00	6,08	6,32	1.992,54	Mining	2,12%
▲ ENGIEC1 PE**	S/.	5,10	0,99%	4,08%	2,00%	-12,97%	65,00%	2.392	#N/A N/A	4,92	14,33	797,01	Diversas	2,12%
▲ GBVLAC1 PE**	S/.	2,10	2,44%	-5,83%	-10,64%	-22,79%	30,00%	7.640	0,00	9,52	-	99,37	Diversas	2,14%

Quantity of shares: 28
Source: Bloomberg, Economática
* Bloomberg Industry Classification System
** PER is used in the stock market and original currency of the instrument

Up 4
Down 9
Hold 15

*Legend: Variation 1D: 1 Day; 5D: 5 Days; 1M: 1 Month; YTD: Var.% 12/31/21 to date

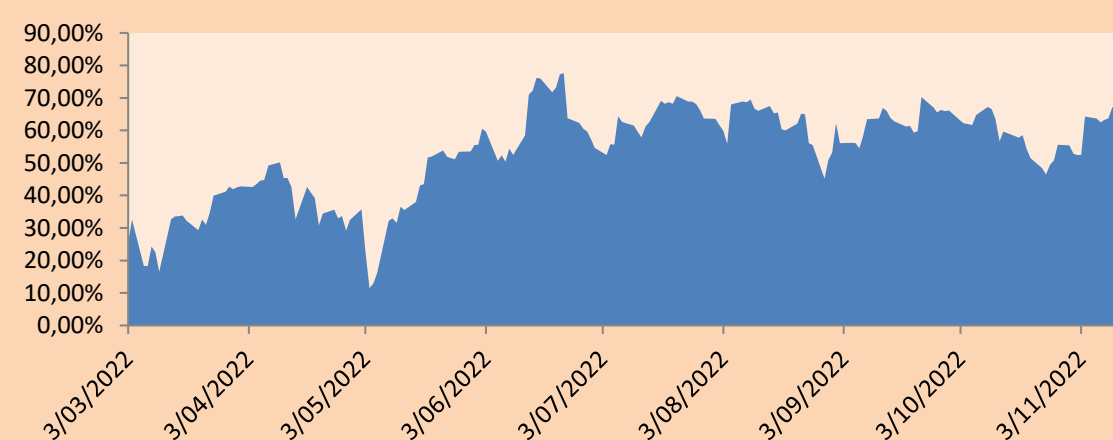
Sectorial Indices

	Close	1D*	5D*	30D*	YTD*	Beta
▼ S&P/BVLMining	386,57	-1,04%	1,06%	14,46%	-6,08%	1,49
▼ S&P/BVLConsumer	1.278,58	-1,87%	-0,07%	2,57%	11,38%	0,65
▼ S&P/BVLIndustrials	240,22	-1,42%	2,07%	1,34%	-6,92%	0,48
▼ S&P/BVLFinancials	1.042,89	-3,95%	-1,11%	-0,86%	15,10%	1,14
▼ S&P/BVLConstruction	232,98	-2,11%	1,52%	1,54%	-17,79%	0,46
▲ S&P/BVLPublicSvcs	880,00	1,37%	17,72%	42,44%	60,44%	0,03
▲ S&P/BVLElectricUtil	859,10	1,37%	17,72%	42,44%	60,44%	0,03

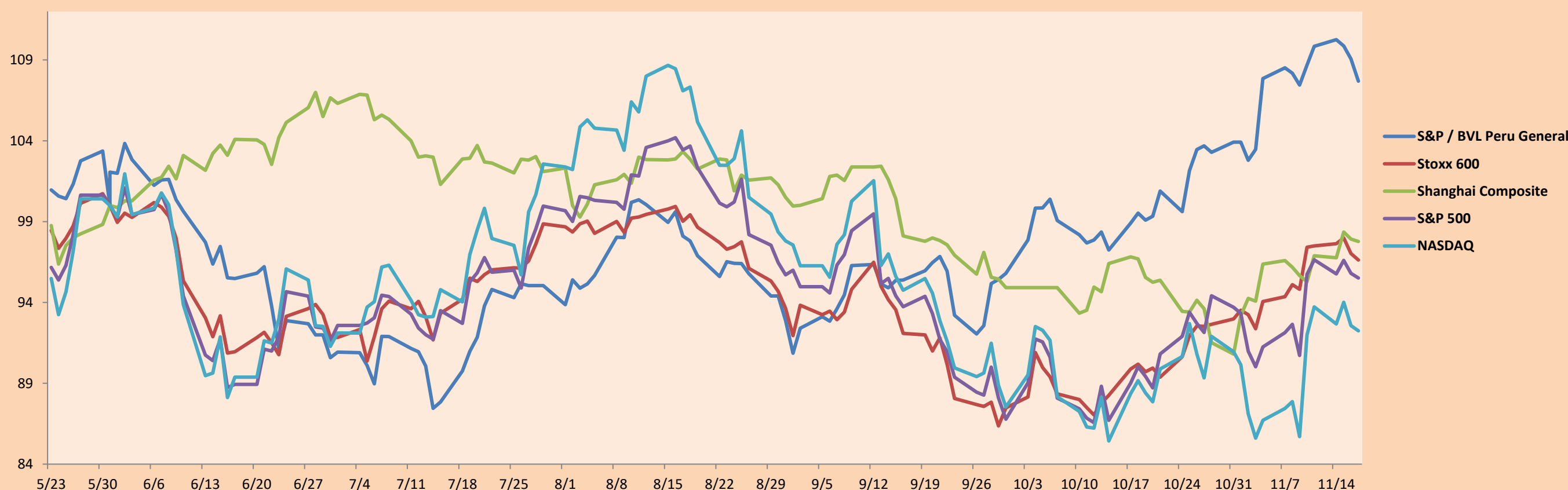
S&P/BVLConstructionTRPEN

*Legend: Variation 1D: 1 Day; 5D: 5 Days; 1M: 1 Month; YTD: Var.% 12/31/21 to date

Correlation Graph of Returns of Mining Index against Metallic Index of London (3 months)



Indices (6 months)



Base: 31/05/22=100
Source: Bloomberg

Capital Market Laboratory Coordinator: MS Javier Penny Pestana
Collaboration: Mariafe Urrutia, Fedele Calle, Nikolas Díaz y Nadia Contreras
email: pulsobursatil@ulima.edu.pe
facebook: www.facebook.com/pulsobursatil.ul

SOVEREIGN RATING

RISK RATINGS

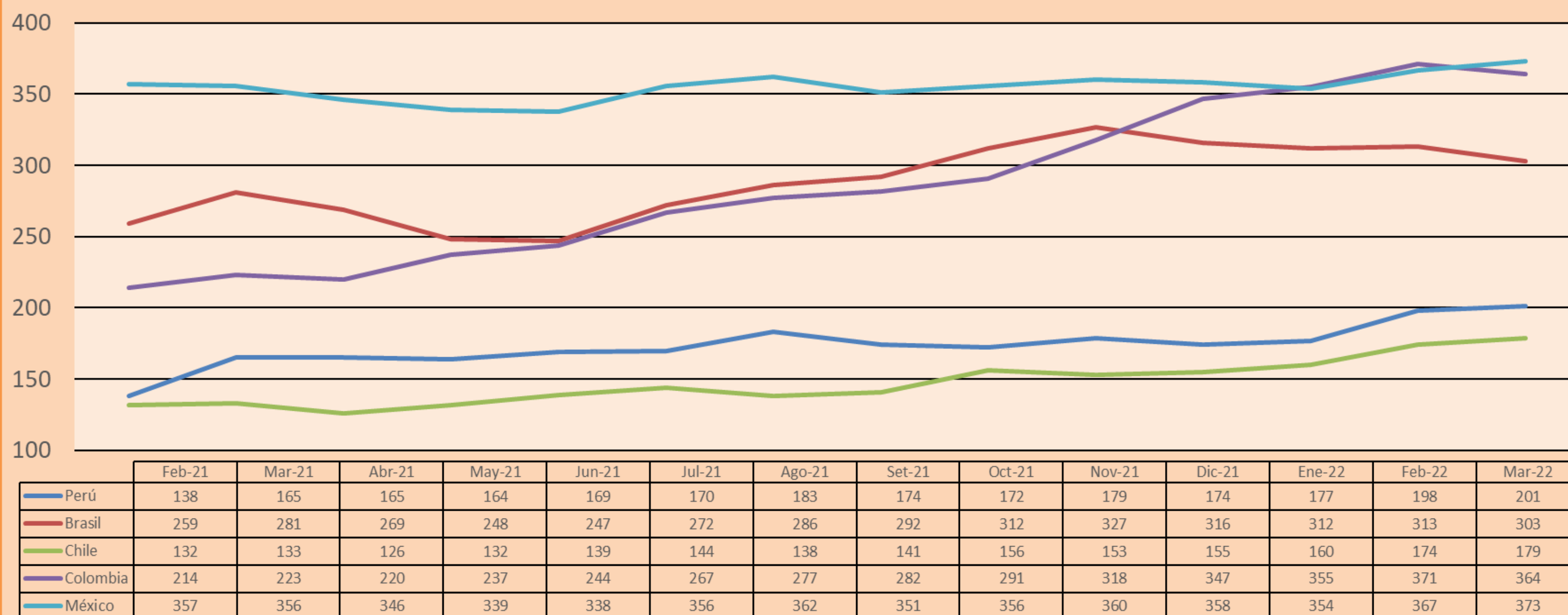
Moody's	S&P	Fitch	
Aaa	AAA	AAA	Prime
Aa1	AA+	AA+	High credit quality
Aa2	AA	AA	
Aa3	AA-	AA-	
A1	A+	A+	Medium-high grade, with low credit risk
A2	A	A	
A3	A-	A-	
Baa1	BBB+	BBB+	Moderate Credit Risk
Baa2	BBB	BBB	
Baa3	BBB-	BBB-	
Ba1	BB+	BB+	It has speculative elements and it is subject to substantial credit risk
Ba2	BB	BB	
Ba3	BB-	BB-	
B1	B+	B+	It is considered speculative and it has high credit risk
B2	B	B	
B3	B-	B-	
Caa1	CCC+	CCC	
Caa2	CCC		
Caa3	CCC-		
Ca	CC		
	C	DDD	Bad credit conditions and it is subject to high credit risk
	D		
		DD	Very close to default or in default
		D	

Source: Bloomberg

Latin America Credit Rating			
Clasificadora de riesgo			
Country	Moody's	Fitch	S&P
Peru	Baa1	BBB	BBB
México	Ba2	BB-	BB-
Venezuela	C	WD	NR
Brazil	Ba2	BB-	BB-
Colombia	Baa2	BB+	BB+
Chile	A2	A-	A
Argentine	Ca	WD	CCC+
Panama	Baa2	BBB-	BBB

Source: Bloomberg

LATAM Country Risk(bps)



Source: BCRP

Capital Market Laboratory Coordinator: MS Javier Penny Pestana
Collaboration: Mariafe Urrutia, Fedele Calle, Nikolas Díaz y Nadia Contreras
email: pulsobursatil@ulima.edu.pe
facebook: www.facebook.com/pulsobursatil.ul