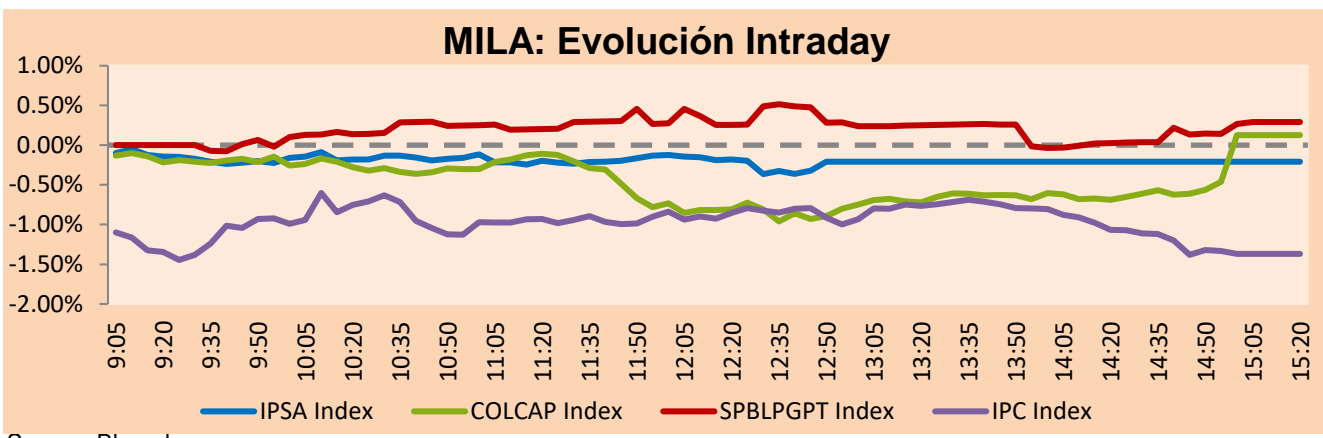


MILA

Lima, February 7, 2023

Main Indexes	Close	1 D	5 D	1 M	YTD	Cap. Burs. (US\$ bill)
▼ IPSA (Chile)	5,271.27	-0.27%	-0.96%	2.62%	0.18%	114.08
▼ IGPA (Chile)	27,981.70	-0.50%	-1.33%	3.57%	1.36%	133.06
▼ COLSC (Colombia)	868.50	-0.95%	-3.57%	-6.41%	-5.91%	3.35
▲ COLCAP (Colombia)	1,270.09	0.13%	-1.55%	-4.27%	-1.24%	57.58
▲ S&P/BVL (Perú)*	22,319.12	0.29%	-0.44%	0.25%	4.64%	106.21
▲ S&P/BVL SEL (Perú)	578.27	0.20%	-0.76%	-0.40%	3.96%	91.03
▲ S&P/BVL LIMA 25	30,670.44	0.08%	-0.67%	-0.85%	1.84%	105.69
▼ IPC (México)	53,335.51	-1.32%	-2.18%	3.10%	10.05%	357.60
▼ S&P MILA 40	482.36	-1.16%	-1.22%	2.85%	4.98%	6,761.12

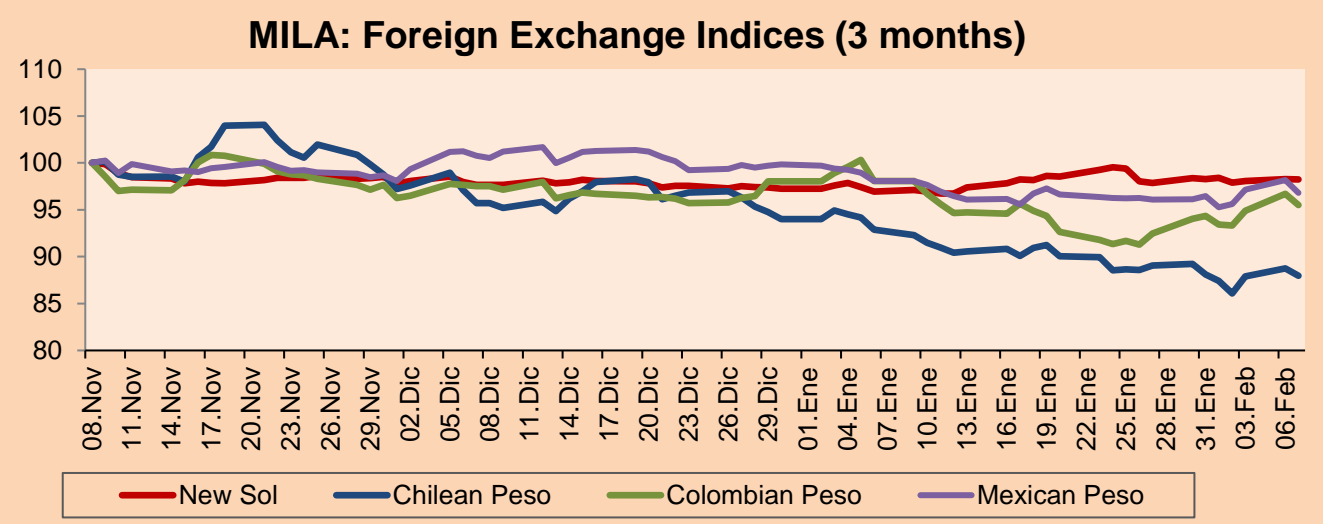
*Legend: Variation 1D: 1 day; 5D: 5 days; 1M: 1 Month; YTD: Var% 12/31/21 to date



Source: Bloomberg

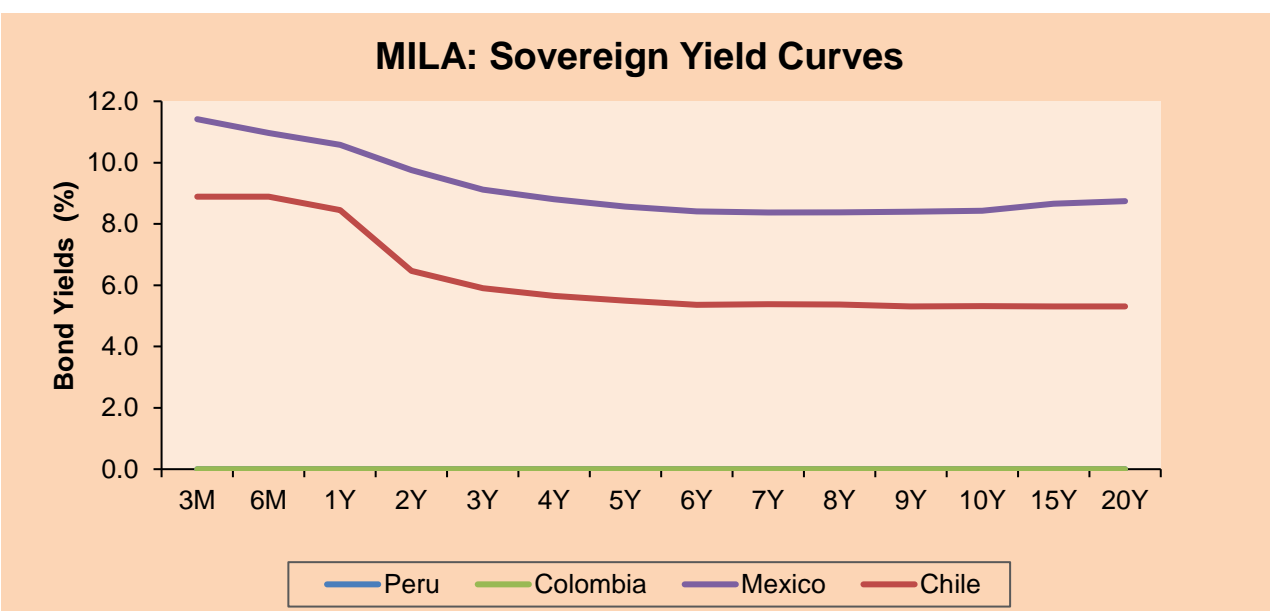
Currency	Price	1D*	5D*	30 D*	YTD*
▼ Sol (PEN)	3,844.3	-0.06%	-0.04%	1.33%	1.00%
▼ Chilean Peso (CLP)	796.28	-0.91%	-0.15%	-5.32%	-6.44%
▼ Colombian Peso (COP)	4,727.50	-1.24%	1.21%	-2.64%	-2.58%
▼ Mexican Peso (MXN)	18.91	-1.37%	0.36%	-1.28%	-3.04%

*Legend: Variation 1D: 1 day; 5D: 5 days; 1M: 1 Month; YTD: Var% 12/31/21 to date



Base: 08/11/22=100
Source: Bloomberg

Fixed Income	Currency	Price	Bid Yield (%)	Ask Yield (%)	Duration
PERU 7.35 07/21/25	USD	105.518	5.02	4.84	2.22
PERU 4.125 08/25/27	USD	97.52	4.80	4.68	3.98
PERU 8.75 11/21/33	USD	125.587	5.61	5.51	7.26
PERU 6.55 03/14/37	USD	109.114	5.65	5.56	8.70
PERU 5.625 11/18/2050	USD	102.204	5.49	5.45	13.90
CHILE 2.25 10/30/22	USD				
CHILE 3.125 01/21/26	USD	96.3	4.55	4.40	2.76
CHILE 3.625 10/30/42	USD	80.591	5.26	5.17	13.13
COLOM 11.85 03/09/28	USD	121.995	6.72	6.62	3.77
COLOM 10.375 01/28/33	USD	114.082	8.34	8.20	6.37
COLOM 7.375 09/18/37	USD	98.041	7.65	7.54	8.53
COLOM 6.125 01/18/41	USD	82.98	7.97	7.87	10.00
MEX 4 10/02/23	USD	82.98	7.969	7.865	10
MEX5.55 01/45	USD	94.793	6.01	5.95	12.33



Source: Bloomberg

Equity

Largest gains	Exchange	Currency	Price	▲%	Largest losses	Exchange	Currency	Price	▼%
SOQUIMICH-B	Chile	CLP	95870.00	5.95	GRUPO F BANORT-O	Mexico	MXN	156.2	-2.56
CMPC	Chile	CLP	1639.90	4.53	BECLE SAB DE CV	Mexico	MXN	41.11	-2.40
BUENAVENTURA-ADR	Peru	USD	7.73	4.46	COLBUN SA	Chile	CLP	91.8	-1.82
EMPRESAS COPEC	Chile	CLP	6889.90	3.45	ALFA SAB-A	Mexico	MXN	13.71	-1.72
MEGACABLE-CPO	Mexico	MXN	45.08	3.42	INRETAIL PERU CO	Peru	USD	34	-1.59

Per Turnover	Exchange	Amount (US\$)	Per Volume	Exchange	Volume
AMERICA MOVIL-L	Mexico	78,629,750	ITAU CORPBANCA	Chile	1,047,244,022
GRUPO MEXICO-B	Mexico	73,569,603	BANCO DE CHILE	Chile	304,370,743
WALMART DE MEXIC	Mexico	57,520,472	BANCO SANTANDER	Chile	179,927,141
SOQUIMICH-B	Chile	49,055,462	ENEL CHILE SA	Chile	102,642,295
GRUPO F BANORT-O	Mexico	45,358,717	AMERICA MOVIL-L	Mexico	78,191,840

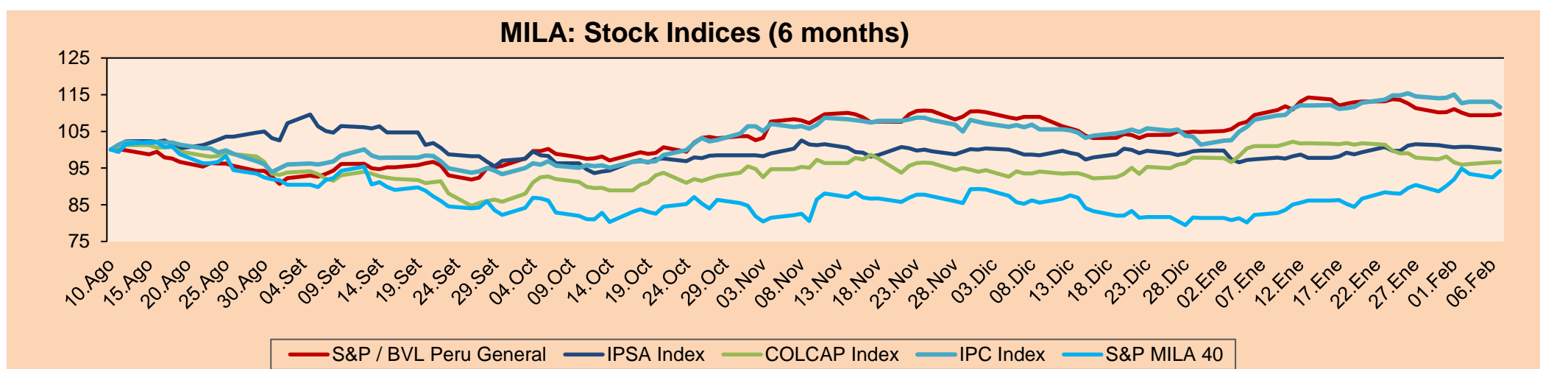
MILA

Peru: The BVL General index ended today's session with a positive result of +0.29%. The index maintains a positive annual cumulative trend of +4.64% in local currency and a positive cumulative trend of +3.60% in dollar-adjusted currency. Regarding the S&P/BVL Peru SEL, it varied +0.20% while the S&P/BVL LIMA 25 varied +0.08%. The spot PEN reached S/3.8443. Headline: Domestic gas supply normalizes in southern regions except for Puno.

Chile: The IPSA index ended the day with a negative return of -0.27%. The most affected sectors of the day were Energy (-2.05%) and Materials (-1.54%). The worst performing stocks were Sociedad Química y Minera SA (-2.36%) and Empresa Copec SA (-2.05%). Headline: Inflation continues to hurt: real wages register 15 months of setbacks in Chile.

Colombia: The COLCAP index ended the session with a positive return of +0.13%. The sectors that benefited the most during the day were Consumer Staples (+5.24%) and Energy (+1.39%). The best performing stocks were Grupo Nutresa SA (+5.24%) and Canacol Energy Limited (+3.09%). Headline: The prices of correntazos are up to 27.06% more expensive than a year ago due to rising inputs.

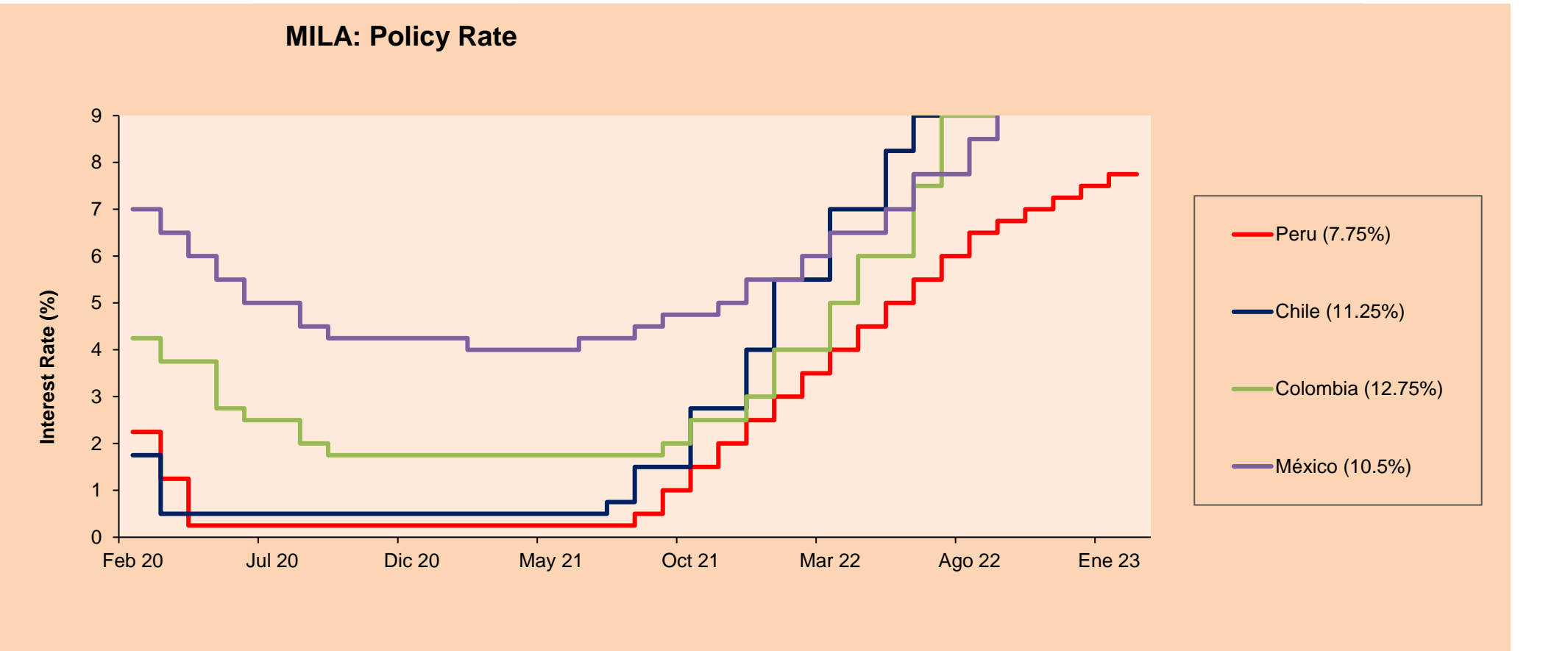
Mexico: The IPC index closed the day in negative territory of -1.32%. The least benefited sectors of the day were Communication Services (-3.46%) and Consumer Staples (-1.50%). The worst performing stocks were Grupo Televisa SAB (-6.74%) and Banco del Bajío SA (-4.73%). Headline: Casuals save formal employment in January, but it is 21.4% lower than in 2022.



Base: 11/08/22=100
Source: Bloomberg

ETFs

ETFs	Curr.	Close	1D	5D	30 D	YTD	Exchange
▲ iShares MSCI All Peru Caped Index Fund	USD	30.75	0.65%	-1.09%	0.72%	7.25%	NYSE Arca
▲ iShares MSCI All Chile Caped Index Fund	USD	29.02	1.26%	-0.82%	8.49%	7.12%	Cboe BZX
Global X MSCI Colombia	USD						
▼ iShares MSCI Mexico Capped	USD	56.29	-0.28%	-2.36%	4.82%	13.83%	NYSE Arca
▲ iShares MSCI Emerging Markets	USD	40.44	0.40%	-2.22%	0.92%	6.70%	NYSE Arca
▲ Vanguard FTSE Emerging Markets	USD	41.34	0.19%	-2.11%	0.85%	6.05%	NYSE Arca
▲ iShares Core MSCI Emerging Markets	USD	49.88	0.40%	-1.95%	1.30%	6.81%	NYSE Arca
▲ iShares JP Morgan Emerging Markets Bonds	USD	54.35	0.15%	-0.82%	-0.59%	2.45%	Cboe BZX
- Morgan Stanley Emerging Markets Domestic	USD	4.59	0.00%	-1.50%	4.79%	4.32%	New York



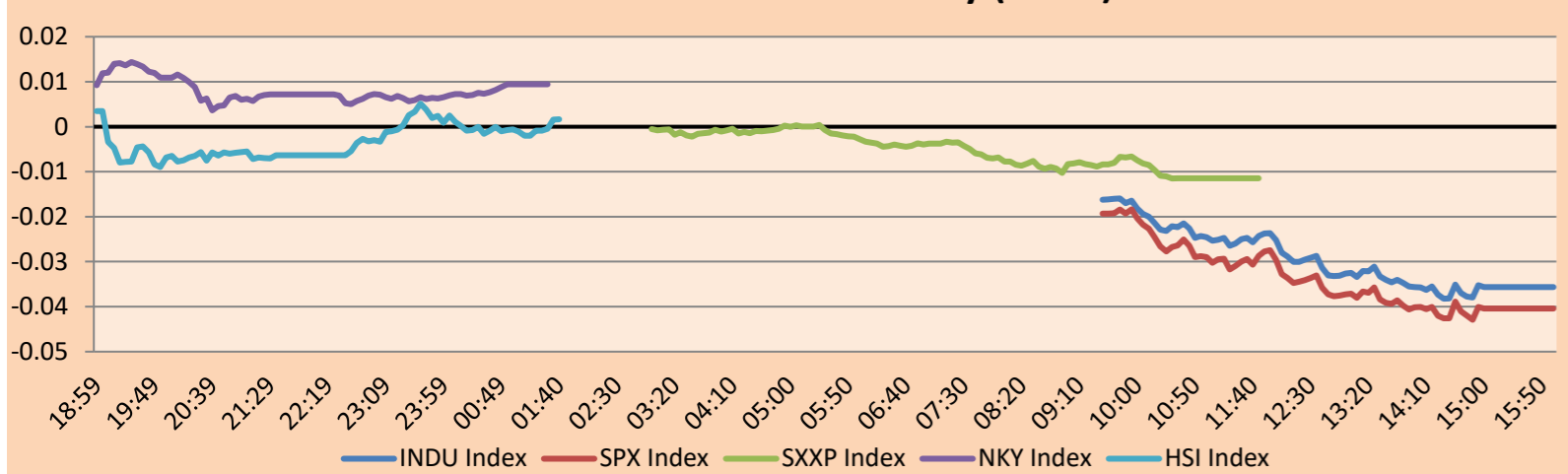
Source: Bloomberg

WORLD

Main Indices	Close	1 D*	5 D*	1 M*	YTD*	Market Cap. (US\$ Mill.)
▲ Dow Jones (USA)	34,156.69	0.78%	0.21%	1.56%	3.05%	10,158,550
▲ Standard & Poor's 500 (EEUU)	4,164.00	1.29%	2.14%	6.90%	8.45%	35,833,055
▲ NASDAQ Composite (USA)	12,113.79	1.90%	4.57%	14.61%	15.74%	20,132,925
▲ Stoxx EUROPE 600 (Europe)	458.19	0.23%	1.10%	3.10%	7.84%	11,834,858
▼ DAX (Germany)	15,320.88	-0.16%	1.27%	4.87%	10.04%	1,524,720
▲ FTSE 100 (United Kingdom)	7,864.71	0.36%	1.20%	2.15%	5.54%	1,776,834
▼ CAC 40 (France)	7,132.35	-0.07%	0.70%	3.96%	10.17%	2,188,978
▲ IBEX 35 (Spain)	9,172.40	0.14%	1.53%	5.42%	11.46%	555,150
▲ MSCI AC Asia Pacific Index	166.43	0.63%	-0.91%	4.15%	6.20%	22,039,178
▲ HANG SENG (Hong kong)	21,298.70	0.36%	-2.49%	1.46%	7.67%	3,513,877
▲ SHANGHAI SE Comp. (China)	3,248.09	0.29%	-0.23%	2.86%	5.14%	6,909,388
▼ NIKKEI 225 (Japan)	27,685.47	-0.03%	1.31%	6.59%	6.10%	3,739,813
▼ S&P / ASX 200 (Australia)	7,504.14	-0.46%	0.37%	5.55%	6.61%	1,751,623
▲ KOSPI (South Korea)	2,451.71	0.55%	1.10%	7.06%	9.63%	1,493,059

*Legend: Variation 1D: 1 Day; 5D: 5 Days; 1M: 1 Month; YTD: Var.% 12/31/21 to date

Mercado Evolución Intraday (var %)

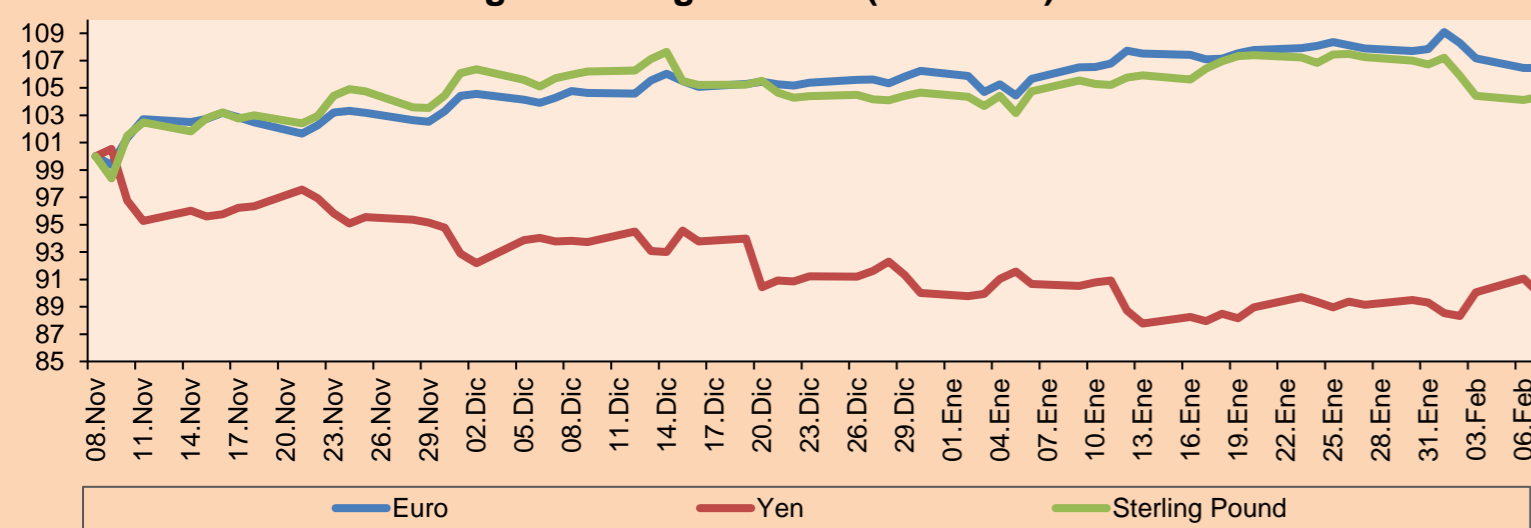


Source: Bloomberg

Currency	Price	1 D*	5 D*	1 M*	YTD*
- Euro	1.0726	0.00%	-1.26%	0.77%	0.20%
▼ Yen	131.0700	-1.20%	0.75%	-0.76%	-0.04%
▲ Sterling Pound	1.2048	0.24%	-2.21%	-0.37%	-0.29%
▲ Yuan	6.7846	-0.17%	0.43%	-0.64%	-1.65%
▲ Hong Kong Dollar	7.8487	0.03%	0.10%	0.53%	0.60%
▲ Brazilian Real	5.2048	1.04%	2.54%	-0.39%	-1.43%
▲ Argentine Peso	189.5043	0.21%	1.35%	5.72%	6.98%

*Legend: Variation 1D: 1 Day; 5D: 5 Days; 1M: 1 Month; YTD: Var.% 12/31/21 to date

Foreign Exchange Indices (3 months)

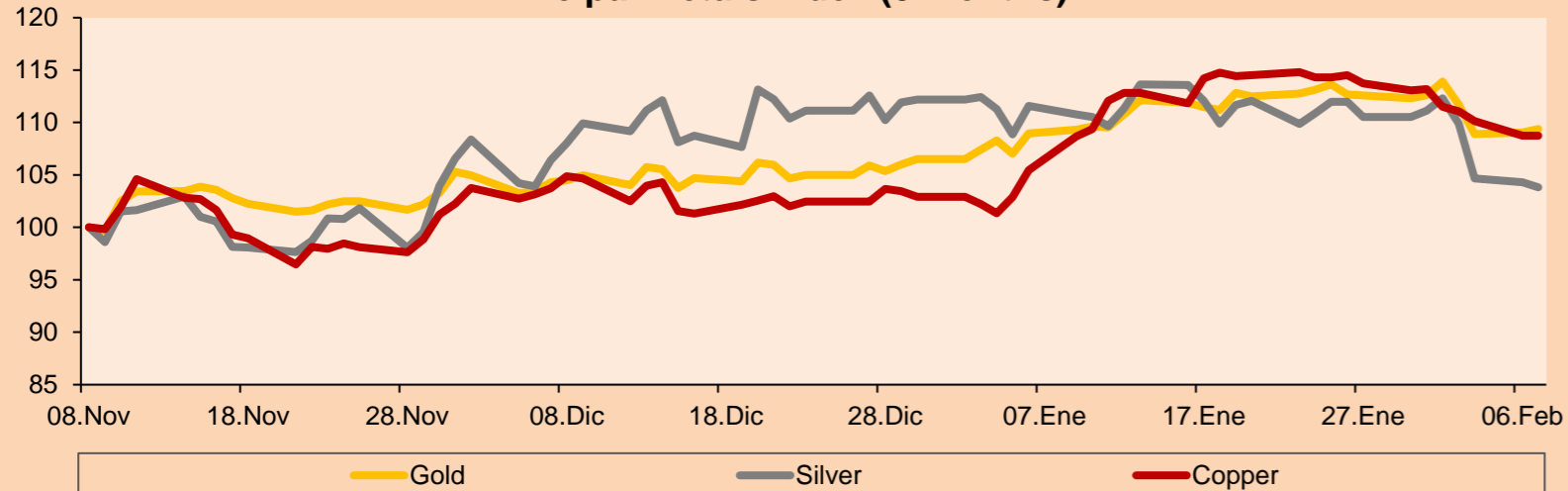


Base: 08/11/22=100
Source: Bloomberg

Commodities	Close	1 D*	5 D*	1 M*	YTD*
▲ Oro (US\$ Oz. T) (LME)	1,873.10	0.30%	-2.87%	0.40%	2.69%
▼ Plata (US\$ Oz. T) (LME)	22.17	-0.44%	-6.57%	-6.96%	-7.44%
- Cobre (US\$ TM) (LME)	8,838.00	0.00%	-3.93%	3.13%	5.66%
- Zinc (US\$ TM) (LME)	3,164.00	0.00%	-7.45%	4.02%	5.35%
▲ Petróleo WTI (US\$ Barril) (NYM)	77.14	4.09%	-2.19%	4.19%	-4.11%
- Estaño (US\$ TM) (LME)	26,786.00	0.00%	-8.99%	6.25%	8.21%
- Plomo (US\$ TM) (LME)	2,087.75	0.00%	-1.91%	-6.43%	-10.65%
▲ Azúcar #11 (US\$ Libra) (NYB-ICE)	19.68	0.92%	-3.72%	9.88%	5.13%
▼ Cacao (US\$ TM) (NYB-ICE)	2,614.00	-0.11%	-0.57%	0.08%	0.50%
▲ Café Arábica (US\$ TM) (NYB-ICE)	177.35	0.88%	-2.39%	11.89%	6.23%

*Leyenda: Variación 1D: 1 Día; 5D: 5 Días; 1M: 1 Mes; YTD: Var.% 31/12/21 a la fecha

Principal Metals Index (3 months)



Base: 08/11/22=100
Source: Bloomberg

Equity

Germany (Stocks from DAX Index)

Largest gains	Curr.	Price	▲%	Exchange	Largest losses	Curr.	Price	▼%	Exchange
ADS GY	EUR	153.08	-1.47	Xetra	P911 GY	EUR	112.6	1.26	Xetra
ENR GY	EUR	18.2	-2.28	Xetra	PAH3 GY	EUR	56.78	0.18	Xetra
MRK GY	EUR	182.65	-0.90	Xetra	BMW GY	EUR	97.4	0.35	Xetra
MUV2 GY	EUR	327	0.86	Xetra	MTX GY	EUR	224.8	-1.27	Xetra

Europe (Stocks from STOXX EUROPE 600)

Largest gains	Curr.	Price	▲%	Exchange	Largest losses	Curr.	Price	▼%	Exchange
BEZ LN	GBp	667.5	1.60	Londres	PSN LN	GBp	1464.5	1.00	Londres
NOD NO	NOK	138	-18.82	Oslo	BBVA SQ	EUR	6.777	-0.19	Soc.Bol SIBE
IFX GY	EUR	36	0.01	Xetra	HBR LN	GBp	299	0.64	Londres
KINVB SS	SEK	173.85	-0.17	Stockholm	LDO IM	EUR	9.474	-0.08	Borsa Italiana

Global Overview:

United States:

The US market closed with positive returns. The DOW JONES finished with gains as investors digested comments from Fed Chairman Jerome Powell, who reiterated that the disinflationary process has begun, especially in the goods sector, while asserting that the Fed has the tools necessary to bring inflation down to its 2% target. When asked about the strong January employment report, Powell's comments did not suggest that he would change the central bank's approach to future rate hikes. He cautioned that if solid jobs data persists, the terminal level of Fed funds could be higher. The S&P 500 index also ended with positive returns. The index's 11 major sectors posted mixed returns, but technology was among the top gainers. On the corporate side, Chegg plunged 17.1% after the education technology company delivered disappointing forecasts. Hertz and DuPont rose nearly 7.5% and 7.4%, respectively, thanks to earnings that beat expectations. DuPont De Nemours Inc rose on better-than-expected quarterly profit, supported by higher prices for its products. Bed Bath & Beyond slipped as the home furnishings retailer seeks a \$1 billion raise in a last-ditch effort to avoid bankruptcy. Finally, the NASDAQ index ended the day higher, getting a boost from Microsoft Corp. The company's shares rose as it unveiled the integration of ChatGPT, an OpenAI chatbot, into its products. Thus, DOW JONES +0.78%, S&P 500 +1.29% and NASDAQ +1.90% ended the day with positive results.

Europe:

Major European indices ended the session with mixed performances. The pan-European STOXX 600 index closed higher, despite retail sales declining 2.7% m-o-m, these figures forecast a market decline of 2.5%. In addition, the construction PMI rose to 46.1 and there was a decline in overall construction activity. The British market, reflected in the FTSE 100, benefited from the energy sector, where the giant BP rose by almost 8%. Similarly, the German market, reflected in the DAX index, closed in slightly negative territory, as industrial production and intermediate goods production declined by 3.1% and 5.8%, respectively. In addition, the Reserve Bank raised its interest rate by 25 basis points. The French market closed with a negative margin, in a context where there is a likelihood of further rate hikes by the Federal Reserve and where vigorous protests against the president's plans to raise the legal retirement age to 62 disrupted public transportation and rail traffic. In addition, investors are still awaiting a speech by US Federal Reserve Chairman Jerome Powell. Thus, FTSE 100 +0.36%; CAC 40 -0.07%; DAX -0.16%; STOXX 600 +0.23% ended with mixed results.

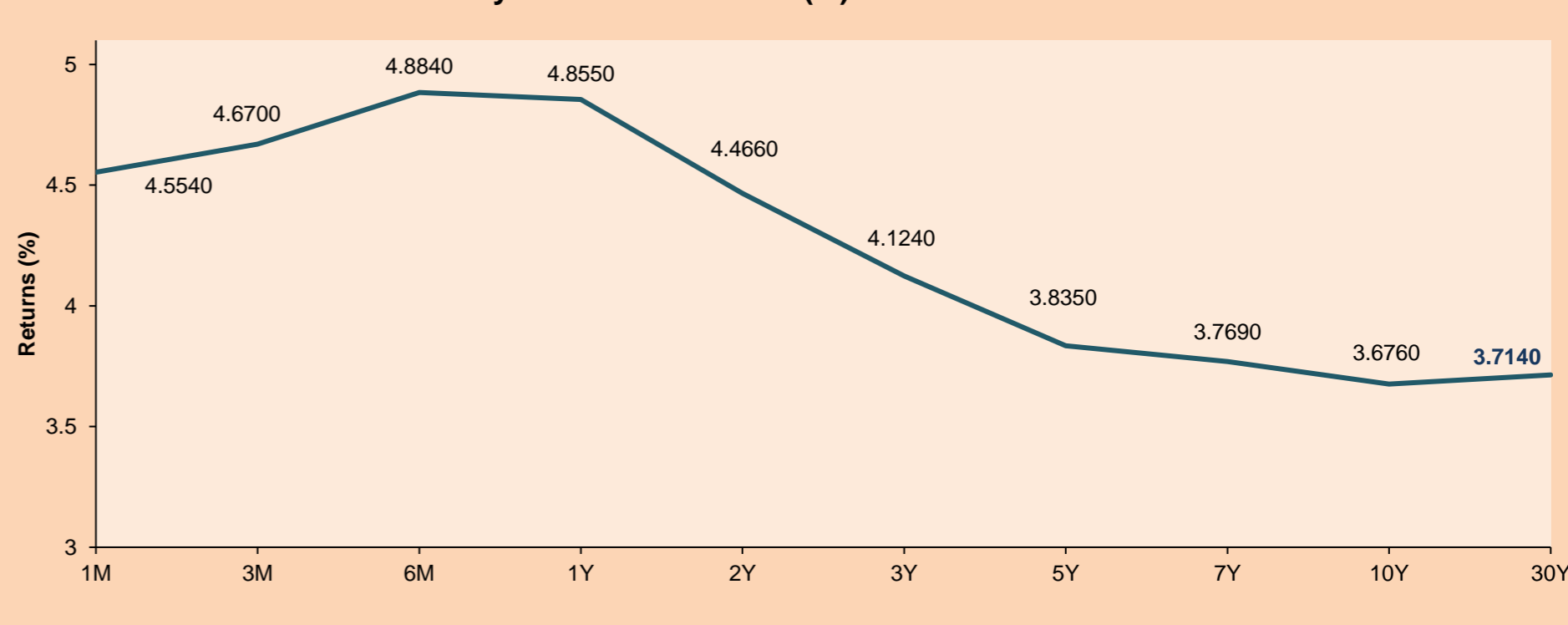
Asia:

Major Asian indices closed with mixed performances, following the global frenzy around the ChatGPT chatbot, which made Chinese AI stocks fashionable in mainland markets. The Chinese market finished higher, due to Microsoft's endorsement of ChatGPT, which boosted IT bets. Also, the future release of articles and trials that ChatGPT can generate has led Google's owner to plan its own chatbot service. Online, the Hang Seng index closed with gains, as shares of search engine giant Baidu ended the session up 15.3%. The South Korean market ended higher on the back of a rally in heavyweight chipmakers and heavyweight battery makers and online platform operators leading gains. However, gains were capped as investors awaited Jerome Powell's interview. Among the top gainers were Kakao (+4.29), Samsung Electronics (+0.49), SK Hynix (+1.91) and LG Energy (+3.24). The Japanese market closed in negative territory, with investors awaiting the Fed chairman's statement, as corporate earnings left the market directionless. JFE Holdings plunged 8.47% after the steel sector lost 2.95%. The Australian market ended with losses after the central bank raised its cash rate by an expected 25bp and signalled that more interest rate hikes would be needed to control inflation. Thus, NIKKEI -0.03%; HANG SENG +0.36%; CSI 300 +0.18%; S&P/ASX 200 -0.46%; KOSPI +0.55%, SHANGHAI COMPOSITE +0.29% ended with mixed performances.

ETFs

	Curr.	Close	1D	5D	30 D	YTD	Exchange
SPDR S&P 500 ETF TRUST	USD	415.19	1.31%	2.14%	6.99%	8.57%	NYSE Arca
ISHARES MSCI EMERGING MARKET	USD	40.44	0.40%	-2.22%	0.92%	6.70%	NYSE Arca
ISHARES IBOXX HIGH YLD CORP	USD	76.17	0.36%	-0.21%	0.85%	3.45%	NYSE Arca
FINANCIAL SELECT SECTOR SPDR	USD	37.00	1.15%	1.20%	4.58%	8.19%	NYSE Arca
VANECK GOLD MINERS ETF	USD	30.63	1.39%	-4.34%	-2.95%	6.87%	NYSE Arca
ISHARES RUSSELL 2000 ETF	USD	195.58	0.74%	2.14%	10.14%	12.17%	NYSE Arca
SPDR GOLD SHARES	USD	173.98	0.09%	-3.03%	0.16%	2.56%	NYSE Arca
ISHARES 20+ YEAR TREASURY BO	USD	105.06	-0.80%	-1.97%	-0.11%	5.52%	NASDAQ GM
INVESCO QQQ TRUST SERIES 1	USD	309.88	2.07%	5.18%	15.28%	16.37%	NASDAQ GM
ISHARES BIOTECHNOLOGY ETF	USD	136.32	0.52%	-0.17%	2.39%	3.83%	NASDAQ GM
ENERGY SELECT SECTOR SPDR	USD	88.35	3.25%	-1.76%	0.90%	1.01%	NYSE Arca
PROSHARES ULTRA VIX ST FUTUR	USD	4.84	-4.91%	-1.43%	-23.54%	-29.45%	Cboe BZX
UNITED STATES OIL FUND LP	USD	67.76	3.45%	-2.25%	4.52%	-3.35%	NYSE Arca
ISHARES MSCI BRAZIL ETF	USD	28.09	-1.47%	-7.42%	-0.74%	0.43%	NYSE Arca
SPDR S&P OIL & GAS EXP & PR	USD	137.60	4.04%	-2.39%	4.59%	1.27%	NYSE Arca
UTILITIES SELECT SECTOR SPDR	USD	68.46	-0.04%	-0.91%	-3.58%	-2.89%	NYSE Arca
ISHARES US REAL ESTATE ETF	USD	92.58	-0.17%	-0.01%	7.39%	9.97%	NYSE Arca
SPDR S&P BIOTECH ETF	USD	90.32	0.69%	1.60%	8.61%	8.82%	NYSE Arca
ISHARES IBOXX INVESTMENT GRA	USD	109.33	-0.33%	-1.39%	0.67%	3.70%	NYSE Arca
ISHARES JP MORGAN USD EMERGI	USD	87.15	0.09%	-0.86%	0.48%	3.03%	NASDAQ GM
REAL ESTATE SELECT SECT SPDR	USD	40.54	-0.39%	-0.12%	7.02%	9.78%	NYSE Arca
ISHARES CHINA LARGE-CAP ETF	USD	30.88	0.85%	-2.89%	-1.03%	9.12%	NYSE Arca
CONSUMER STAPLES SPDR	USD	73.18	-0.42%	-0.76%	-3.43%	-1.84%	NYSE Arca
VANECK JUNIOR GOLD MINERS	USD	37.20	1.28%	-4.49%	-5.78%	4.35%	NYSE Arca
SPDR BLOOMBERG HIGH YIELD BO	USD	93.48	0.39%	-0.16%	1.13%	3.87%	NYSE Arca
VANGUARD REAL ESTATE ETF	USD	91.07	-0.22%	0.01%	7.94%	10.41%	NYSE Arca
GRAYSCALE BITCOIN TRUST BTC	USD	12.15	1.84%	0.00%	40.46%	46.56%	OTC US

USA Treasury Bonds Yield Curve (%)



Source: Bloomberg

LIMA

Stocks

Ticker	Currency	Price	1D*	5D*	30D*	YTD*	Frequency	Volume (US\$)	Beta	Dividend Yield (%)	Price Earning	Market Cap. (M US\$)	Economic Sector*	Index Weight
▼ ALICORC1 PE**	S/.	6.30	-0.95%	-3.57%	-6.41%	-5.91%	95.00%	4,744	0.74	3.97	9.79	1,396.25	Industrial	3.53%
- ATACOCB1 PE**	S/.	0.07	0.00%	0.00%	#¡VALOR!	0.00%	20.00%	3,170	#N/A N/A	0.00	-	18.19	Mining	1.02%
▼ BACKUS1 PE**	S/.	25.70	-0.39%	-0.39%	1.98%	4.56%	60.00%	6,705	0.76	4.86	8.22	7,860.45	Industrial	0.82%
▲ BAP PE**	US\$	137.05	1.07%	2.62%	-5.85%	1.33%	100.00%	306,893	1.24	2.92	-	10,898.22	Diverse	5.82%
▲ BVN PE**	US\$	7.73	1.71%	-4.09%	-5.27%	3.20%	100.00%	83,545	1.73	0.91	-	2,130.66	Mining	5.88%
- CASAGRC1 PE**	S/.	7.80	0.00%	0.00%	-2.50%	-1.27%	55.00%	1,013	0.47	0.00	7.12	170.91	Agricultural	1.31%
▲ BBVAC1 PE**	S/.	1.72	0.58%	0.58%	1.18%	1.78%	95.00%	17,627	0.46	6.14	6.01	3,302.90	Finance	2.85%
▲ CORAREI1 PE**	S/.	1.27	0.79%	-2.31%	-14.19%	-9.29%	100.00%	8,095	0.67	11.94	4.11	512.14	Industrial	1.72%
▼ CPACASC1 PE**	S/.	4.05	-0.25%	0.00%	0.50%	2.53%	80.00%	81,284	0.58	10.37	11.25	483.43	Industrial	2.38%
▼ CVERDEC1 PE**	US\$	31.20	-1.89%	-2.19%	5.76%	4.70%	90.00%	170,739	0.90	3.66	10.98	10,921.75	Mining	5.25%
▲ ENGEPEC1 PE**	S/.	3.85	1.32%	-3.75%	6.94%	6.94%	85.00%	104,000	0.85	15.88	8.67	1,750.43	Public Services	1.44%
▲ ENDISPC1**	S/.	12.06	2.20%	6.73%	67.50%	69.86%	95.00%	179,397	0.93	2.14	18.27	2,003.25	Public Services	0.98%
▲ FERREYC1 PE**	S/.	2.20	0.46%	0.46%	-1.35%	-1.35%	100.00%	122,705	0.68	11.81	4.40	541.41	Diverse	4.90%
- AENZAC1 PE**	S/.	0.74	0.00%	2.78%	-12.94%	-10.84%	60.00%	3,100	#N/A N/A	0.00	-	230.41	Diverse	4.05%
▲ IFS PE**	US\$	23.44	0.82%	-2.90%	-6.98%	-1.92%	90.00%	336,212	0.93	7.47	6.84	2,705.40	Diverse	7.22%
▲ INRETC1 PE**	US\$	34.80	2.35%	1.16%	4.19%	5.42%	90.00%	31,799	0.56	1.98	18.84	3,784.39	Diverse	5.28%
▼ LUSURC1 PE**	S/.	14.80	-0.67%	-1.33%	-1.33%	-2.63%	65.00%	3,838	0.00	7.75	11.27	1,874.69	Public Services	1.81%
▲ MINSURI1 PE**	S/.	3.65	0.55%	-0.54%	-2.67%	2.82%	100.00%	20,854	1.11	10.25	1.52	2,737.29	Mining	3.09%
▼ PML PE**	US\$	0.08	-11.11%	-11.11%	-11.11%	-11.11%	40.00%	4,979	#N/A N/A	0.00	-	21.94	Mining	2.12%
▼ SCCO PE**	US\$	74.00	-0.24%	-2.34%	9.47%	20.19%	95.00%	47,143	1.45	4.73	20.39	57,209.29	Industrial	2.12%
- SIDERC1 PE**	S/.	1.60	0.00%	-2.44%	-7.51%	-2.44%	75.00%	4,973	0.63	27.56	4.64	291.34	Mining	2.14%
- SIDERC1 PE**	US\$	1.60	0.00%	-2.44%	-7.51%	-2.44%	0.00%	19,118	#N/A N/A	0.00	-	#N/A N/A	Industrial	1.43%
- UNACEMC1 PE**	S/.	1.80	0.00%	0.00%	0.56%	0.00%	55.00%	134	0.99	0.00	-	851.29	Mining	2.93%
- VOLCABC1 PE**	S/.	0.50	0.00%	0.00%	-3.85%	-1.96%	95.00%	12,993	1.33	0.00	27.77	524.91	Industrial	3.00%
- BROCALC1 PE**	S/.	6.14	0.00%	0.00%	0.33%	0.33%	5.00%	28,180	0.00	0.00	44.85	259.54	Mining	5.90%
- RIMSEGC1 PE**	S/.	0.72	0.00%	-1.37%	0.00%	2.86%	20.00%	3,063	0.00	0.00	5.53	334.13	Finance	3.09%
- CORAREC1 PE**	US\$	1.95	0.00%	0.00%	1.04%	1.56%	30.00%	234,000	0.00	6.08	6.32	1,968.83	Mining	2.12%
- ENGIEC1 PE**	S/.	5.26	0.00%	0.19%	4.16%	6.26%	45.00%	554	#N/A N/A	0.00	14.80	822.83	Diversas	2.12%
- GBVLAC1 PE**	S/.	2.47	0.00%	0.00%	-5.00%	-5.00%	5.00%	12	0.00	0.00	23.70	116.89	Diversas	2.14%

Quantity of shares: 29
Source: Bloomberg, Economática
* Bloomberg Industry Classification System
** PER is used in the stock market and original currency of the instrument

Up 10
Down 7
Hold 12

*Legend: Variation 1D: 1 Day; 5D: 5 Days, 1M: 1 Month; YTD: Var.% 12/31/21 to date

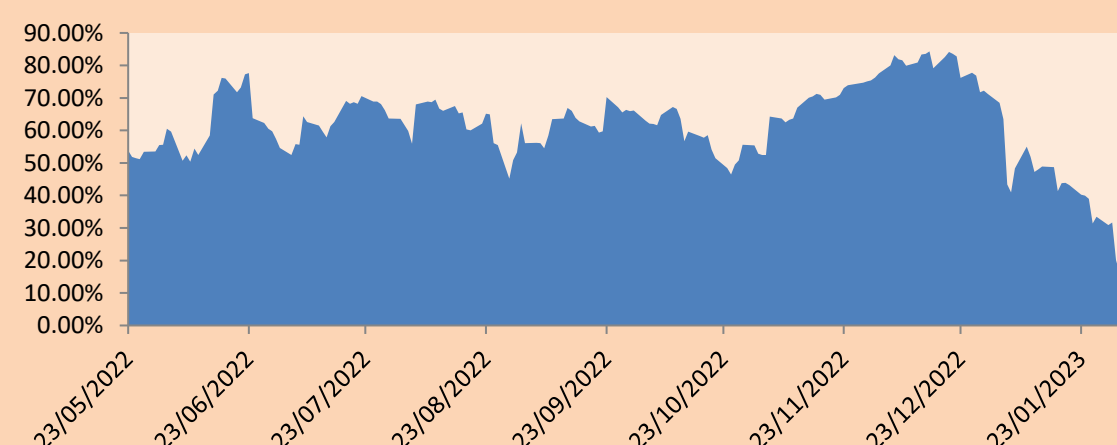
Sectorial Indices

	Close	1D*	5D*	30D*	YTD*	Beta
▼ S&P/BVLMining	449.70	-0.43%	-2.78%	6.17%	14.32%	1.46
▲ S&P/BVLConsumer	1,247.68	0.52%	0.77%	0.26%	1.14%	0.46
▲ S&P/BVLIndustrials	241.71	0.13%	0.27%	-2.08%	-1.35%	0.42
▲ S&P/BVLFinancials	971.72	0.60%	1.80%	-4.75%	1.74%	1.24
▼ S&P/BVLConstruction	238.69	-0.02%	0.18%	-2.41%	-1.36%	0.37
▲ S&P/BVLPublicSvcs	957.97	1.19%	1.53%	22.33%	23.74%	0.20
▲ S&P/BVLElectricUtil	935.22	1.19%	1.53%	22.33%	23.74%	0.20

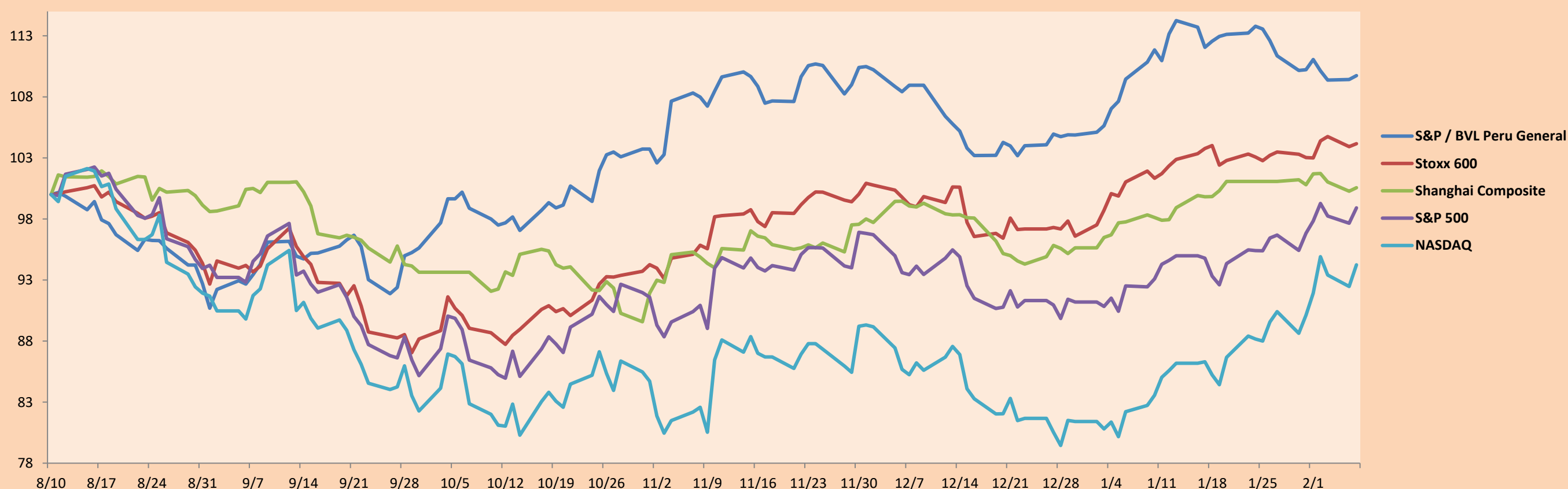
S&P/BVLConstructionTRPEN

*Legend: Variation 1D: 1 Day; 5D: 5 Days, 1M: 1 Month; YTD: Var.% 12/31/21 to date

Correlation Graph of Returns of Mining Index against Metallic Index of London (3 months)



Indices (6 months)



Base: 10/08/22=100
Source: Bloomberg

Capital Market Laboratory Coordinator: MS Javier Penny Pestana
Collaboration: Mariafe Urrutia, Fedele Calle, Nikolas Díaz y Nadia Contreras
email: pulsobursatil@ulima.edu.pe
facebook: www.facebook.com/pulsobursatil.ul

SOVEREIGN RATING

RISK RATINGS

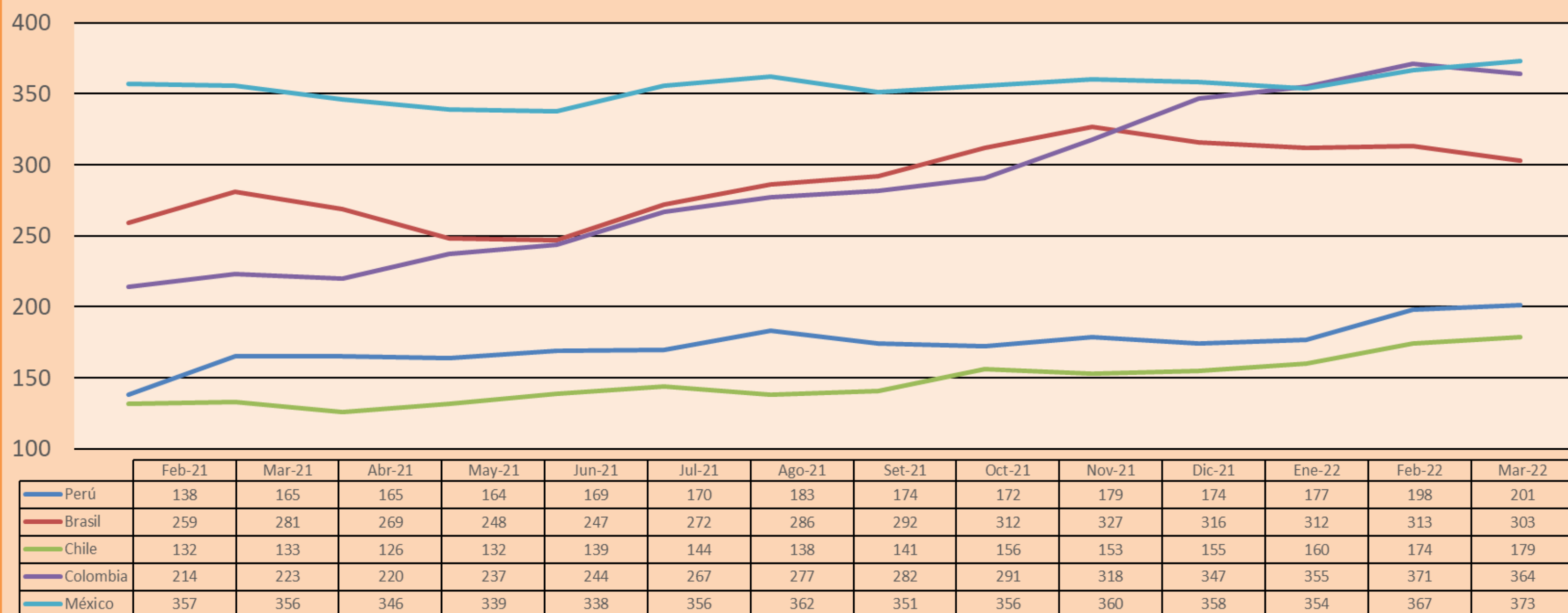
Moody's	S&P	Fitch	
Aaa	AAA	AAA	Prime
Aa1	AA+	AA+	High credit quality
Aa2	AA	AA	
Aa3	AA-	AA-	
A1	A+	A+	Medium-high grade, with low credit risk
A2	A	A	
A3	A-	A-	
Baa1	BBB+	BBB+	Moderate Credit Risk
Baa2	BBB	BBB	
Baa3	BBB-	BBB-	
Ba1	BB+	BB+	It has speculative elements and it is subject to substantial credit risk
Ba2	BB	BB	
Ba3	BB-	BB-	
B1	B+	B+	It is considered speculative and it has high credit risk
B2	B	B	
B3	B-	B-	
Caa1	CCC+	CCC	
Caa2	CCC	CCC	
Caa3	CCC-	CCC	
Ca	CC	CC	Very close to default or in default
C	C	CC	
C	D	DD	
C	D	D	

Source: Bloomberg

Latin America Credit Rating			
Clasificadora de riesgo			
Country	Moody's	Fitch	S&P
Peru	Baa1	BBB	BBB
México	Ba2	BB-	BB-
Venezuela	C	WD	NR
Brazil	Ba2	BB-	BB-
Colombia	Baa2	BB+	BB+
Chile	A2	A-	A
Argentine	Ca	WD	CCC+
Panama	Baa2	BBB-	BBB

Source: Bloomberg

LATAM Country Risk(bps)



Source: BCRP

Capital Market Laboratory Coordinator: MS Javier Penny Pestana
Collaboration: Mariafe Urrutia, Fedele Calle, Nikolas Díaz y Nadia Contreras
email: pulsobursatil@ulima.edu.pe
facebook: www.facebook.com/pulsobursatil.ul