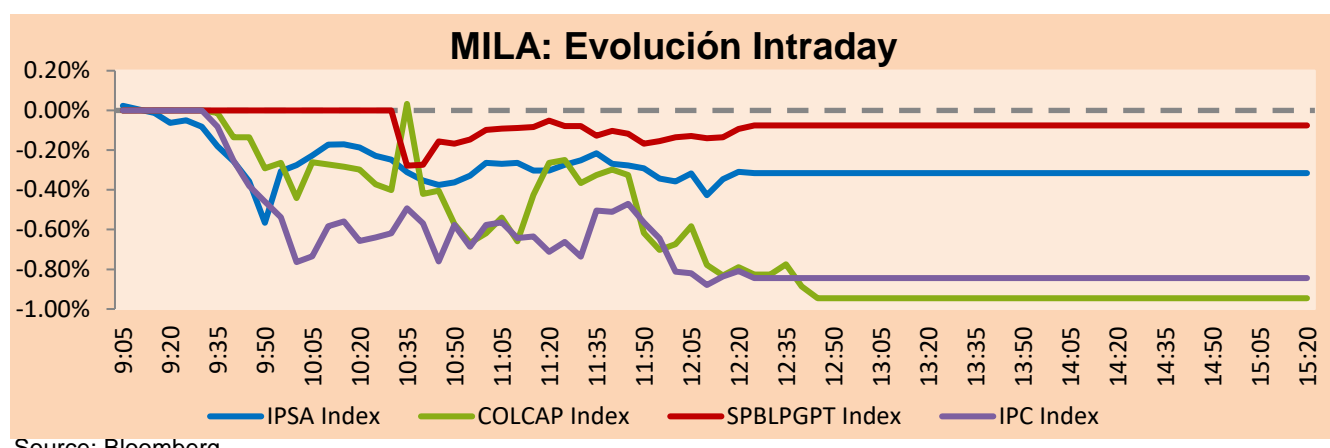


## MILA

Lima, March 10, 2023

Main Indexes	Close	1 D	5 D	1 M	YTD	Cap. Burs. (US\$ bill)
▼ IPSA (Chile)	5,391.72	-0.35%	-0.88%	0.02%	2.50%	117.34
▼ IGPA (Chile)	27,900.83	-0.48%	-2.39%	-1.88%	1.11%	136.89
▲ COLSC (Colombia)	873.06	0.34%	2.17%	2.71%	-5.41%	3.18
▼ COLCAP (Colombia)	1,199.95	-0.89%	-1.20%	-3.73%	-6.75%	56.47
▼ S&P/BVL (Perú)*	21,744.15	-0.08%	-2.24%	0.22%	1.94%	104.36
▼ S&P/BVL SEL (Perú)	561.90	-0.12%	-3.56%	-0.34%	1.07%	88.41
▼ S&P/BVL LIMA 25	29,880.17	-0.24%	-1.90%	-1.34%	-0.79%	103.82
▼ IPC (México)	52,986.72	-0.82%	-2.21%	0.95%	9.32%	359.83
▼ S&P MILA 40	485.02	-0.36%	1.23%	0.30%	5.56%	6,620.24

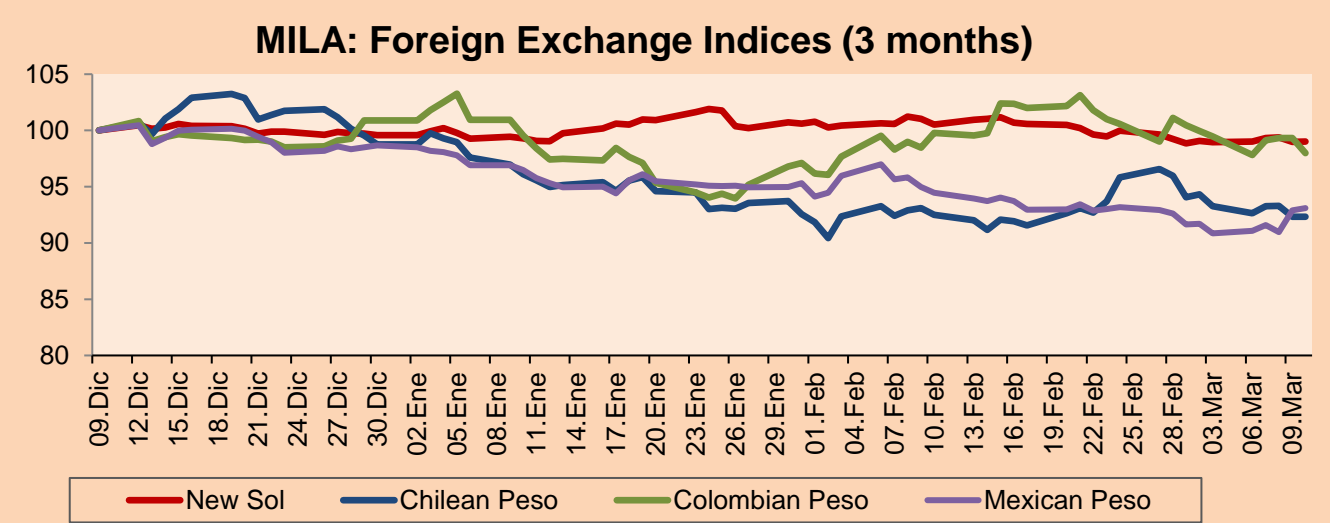
\*Legend: Variation 1D: 1 day; 5D: 5 days; 1M: 1 Month; YTD: Var% 12/31/21 to date



Source: Bloomberg

Currency	Price	1D*	5D*	30 D*	YTD*
▲ Sol (PEN)	3,7846	0.06%	0.04%	-2.20%	-0.57%
▼ Chilean Peso (CLP)	795.60	-0.01%	-1.02%	-0.61%	-6.52%
▼ Colombian Peso (COP)	4,713.45	-1.34%	-1.48%	-1.00%	-2.87%
▲ Mexican Peso (MXN)	18.40	0.20%	2.46%	-2.86%	-5.65%

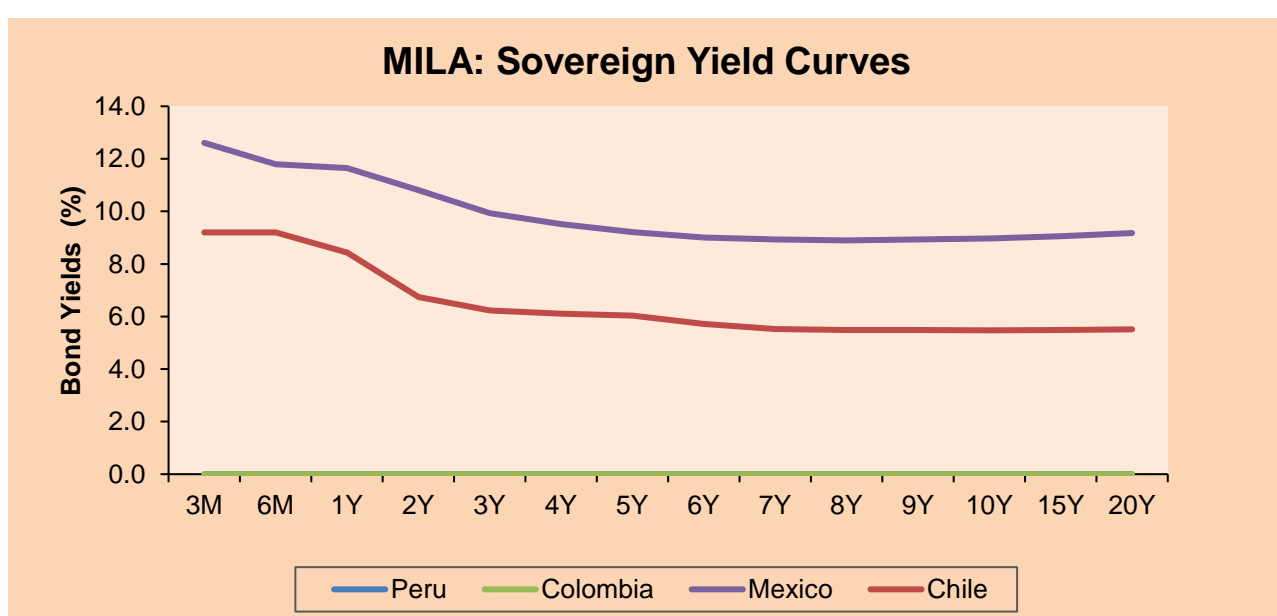
\*Legend: Variation 1D: 1 day; 5D: 5 days; 1M: 1 Month; YTD: Var% 12/31/21 to date



Base: 09/12/22=100

Source: Bloomberg

Fixed Income	Currency	Price	Bid Yield (%)	Ask Yield (%)	Duration
PERU 7.35 07/21/25	USD	105.316	5.01	4.84	2.13
PERU 4.125 08/25/27	USD	97.294	4.86	4.76	3.97
PERU 8.75 11/21/33	USD	124.572	5.70	5.61	7.12
PERU 6.55 03/14/37	USD	107.733	5.79	5.69	8.51
PERU 5.625 11/18/2050	USD	99.75	5.67	5.62	13.47
CHILE 2.45 01/31/2031	USD	84.729	4.85	4.75	6.87
CHILE 3.125 01/21/26	USD	95.721	4.82	4.67	2.67
CHILE 3.625 10/30/42	USD	78.347	5.47	5.39	12.77
COLOM 11.85 03/09/28	USD	118.795	7.34	7.23	3.84
COLOM 10.375 01/28/33	USD	111.702	8.76	8.42	6.21
COLOM 7.375 09/18/37	USD	92.652	8.31	8.20	8.22
COLOM 6.125 01/18/41	USD	78.347	8.55	8.46	9.63
MEX 4 10/02/23	USD	78.347	8.545	8.461	9.63
MEX5.55 01/45	USD	93.257	6.14	6.08	12.02



Source: Bloomberg

### Equity

Largest gains	Exchange	Currency	Price	▲%	Largest losses	Exchange	Currency	Price	▼%
Colbún SA	Chile	CLP	101.43	2.45	Grupo F Banort-O	Mexico	MXN	156.02	-4.33
Walmart de Méx-V	Mexico	MXN	73.24	1.82	Cervezas	Chile	CLP	6262.1	-3.29
SMU SA	Chile	CLP	139.00	1.46	Cemex Sab-Cpo	Mexico	MXN	9.32	-2.82
Arca-Nom	Mexico	MXN	157.87	1.41	Empresa de Energ	Colombia	COP	1427	-2.73
Corficolombiana	Colombia	COP	11560.00	1.40	Entel	Chile	CLP	3270.1	-2.68

Per Turnover	Exchange	Amount (US\$)	Per Volume	Exchange	Volume
Grupo F Banort-O	Mexico	22,498,831	Corpbanca	Chile	466,020,588
Soquimich-B	Chile	18,373,027	Banco Santander	Chile	276,263,539
Grupo Aeroport-B	Mexico	15,907,566	Banco de Chile	Chile	41,642,537
Fomento Econ-Ubd	Mexico	12,581,156	Colbún SA	Chile	26,790,388
Banco Santander	Chile	12,535,745	ENEL CHILE SA	Chile	26,351,890

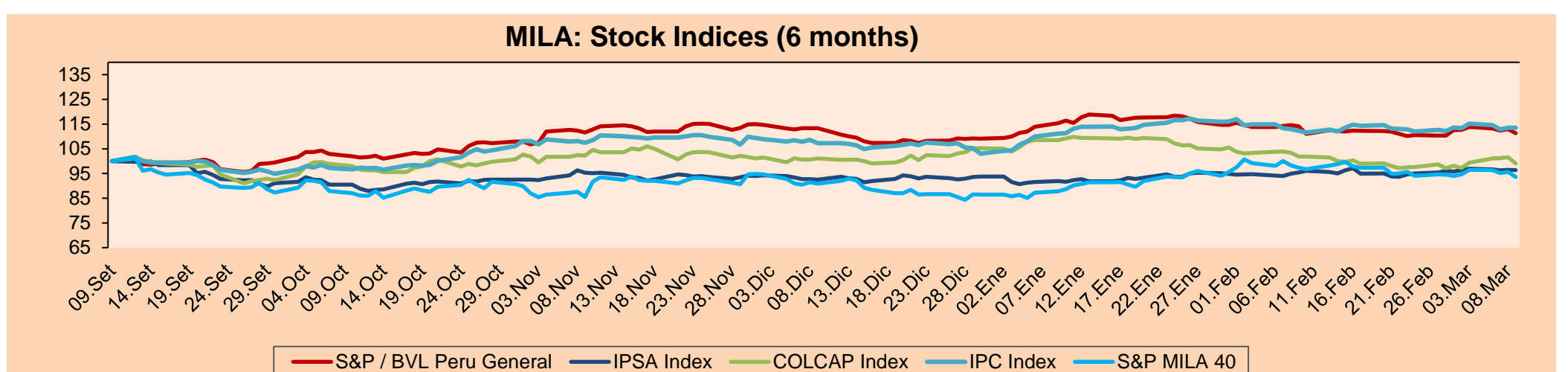
### MILA

Peru: The bvl General index ended today's session with a negative result of -0.51%. The index maintains a positive annual cumulative trend of +3.14% in local currency and a positive cumulative trend of +3.60% in dollar-adjusted currency. Regarding the S&P/BVL Peru SEL, it varied by -1.26% while the S&P/BVL LIMA 25 by -0.45%. The spot PEN reached S/3.7850. Headline: Climate change could cut Latin America's GDP by 16% this century, according to Moody's.

Chile: The IPSA index ended the day with a negative return of -0.22%. The sectors that lost the most during the day were Materials (-2.34%) and Communication Services (-1.32%). The worst performing stocks were Empresas CMPC SA (-2.95%) and Sociedad Química y Minera de Chile (-2.24%). Headline: On the eve of the February CPI, Minister Marcel bets on a "substantial drop" in inflation this year.

Colombia: The COLCAP index ended the session with a positive return of +1.74%. The sectors that benefited the most during the day were Non-Basic Consumer Products (+3.28%) and Utilities (+1.35%). The best performing stocks were Organización Terpel SA (+3.28%) and Interconexión Eléctrica SA ESP (+2.13%). Headline: Did inflation hit the ceiling? Analysts see that pressures persist.

Mexico: The IPC index closed the day in negative territory at -0.48%. The sectors that lost the most during the day were Materials (-1.34%) and Communication Services (-0.97%). The worst performing stocks were Sitios Latinoamérica SAB de CV (-4.43%) and Grupo Carso SAB de CV (-3.30%). Headline: Formal employment in Mexico had the second largest increase in February since records began.

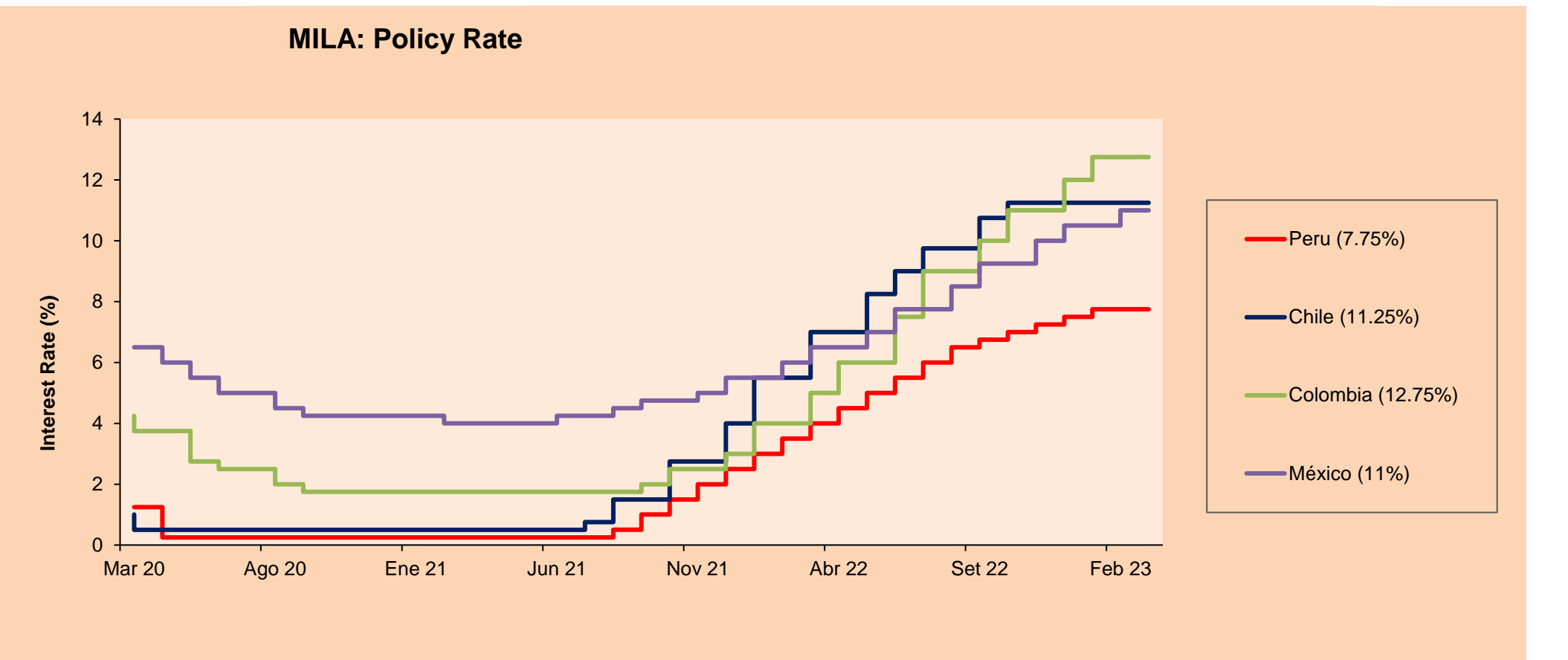


Base: 12/09/22=100

Source: Bloomberg

### ETFs

ETFs	Curr.	Close	1D	5D	30 D	YTD	Exchange
▲ iShares MSCI All Peru Caped Index Fund	USD	29.24	0.07%	-3.50%	-3.31%	1.99%	NYSE Arca
▲ iShares MSCI All Chile Caped Index Fund	USD	28.99	0.14%	-1.09%	0.52%	7.01%	Cboe BZX
Global X MSCI Colombia	USD	-	-	-	-	-	-
▼ iShares MSCI Mexico Capped	USD	57.56	-1.42%	-4.56%	3.06%	16.40%	NYSE Arca
▲ iShares MSCI Emerging Markets	USD	38.0403	0.00%	-3.79%	-5.82%	0.37%	NYSE Arca
▼ Vanguard FTSE Emerging Markets	USD	39.31	-0.08%	-3.39%	-4.73%	0.85%	NYSE Arca
- iShares Core MSCI Emerging Markets	USD	47.22	0.00%	-3.53%	-5.12%	1.11%	NYSE Arca
▲ iShares JP Morgan Emerging Markets Bonds	USD	53.12	0.19%	-1.74%	-2.30%	0.13%	Cboe BZX
▼ Morgan Stanley Emerging Markets Domestic	USD	4.555	-0.55%	0.11%	-0.55%	3.52%	New York



Source: Bloomberg

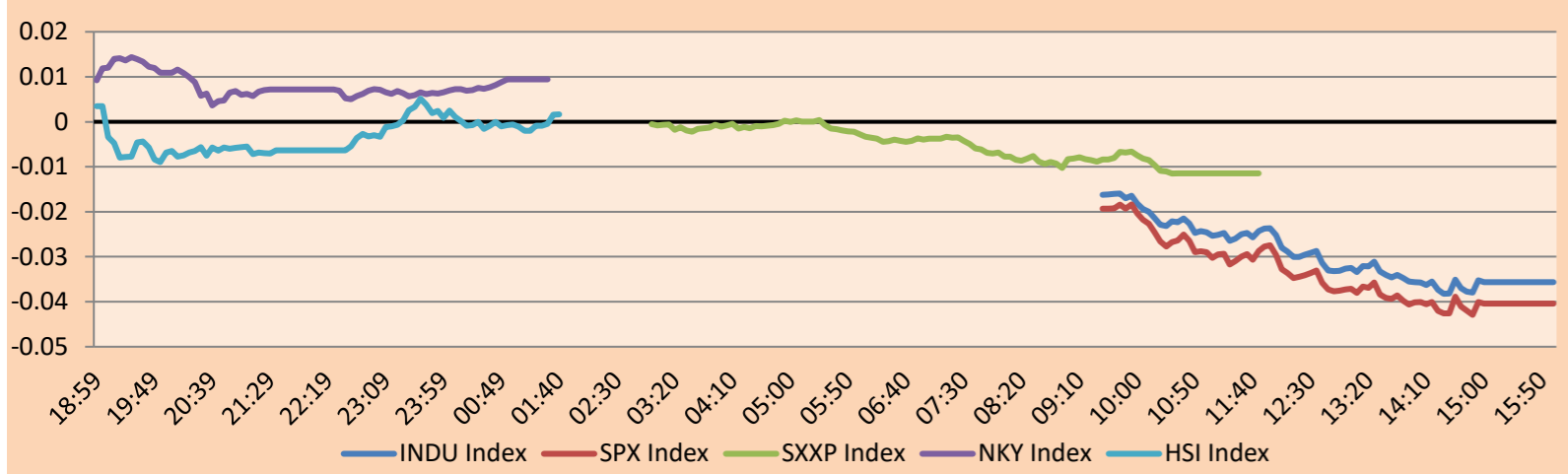


## WORLD

Main Indices	Close	1 D*	5 D*	1 M*	YTD*	Market Cap. (US\$ Mill.)
▼ Dow Jones (USA)	32,164.69	-0.28%	-3.67%	-5.11%	-3.05%	9,824,896
▼ Standard & Poor's 500 (EEUU)	3,888.96	-0.75%	-3.87%	-4.93%	1.28%	34,083,871
▼ NASDAQ Composite (USA)	11,251.32	-0.77%	-3.74%	-4.05%	7.42%	19,160,024
▼ Stoxx EUROPE 600 (Europe)	453.76	-1.35%	-2.26%	-0.90%	6.79%	11,794,639
▼ DAX (Germany)	15,427.97	-1.31%	-0.97%	0.78%	10.80%	1,415,568
▼ FTSE 100 (United Kingdom)	7,748.35	-1.67%	-2.50%	-1.70%	3.98%	1,780,158
▼ CAC 40 (France)	7,220.67	-1.30%	-1.73%	1.28%	11.54%	2,232,629
▼ IBEX 35 (Spain)	9,285.00	-1.47%	-1.89%	1.84%	12.83%	571,032
▼ MSCI AC Asia Pacific Index	160.03	-0.11%	0.33%	-3.79%	2.76%	21,389,474
▼ HANG SENG (Hong kong)	19,319.92	-3.04%	-6.07%	-8.72%	-2.33%	3,137,852
▼ SHANGHAI SE Comp. (China)	3,230.08	-1.41%	-2.95%	-1.65%	4.56%	6,759,397
▼ NIKKEI 225 (Japan)	28,143.97	-1.67%	0.78%	2.61%	7.85%	3,697,216
▼ S&P / ASX 200 (Australia)	7,144.69	-2.28%	-1.91%	-3.68%	1.51%	1,589,535
▼ KOSPI (South Korea)	2,394.59	-1.01%	-1.54%	-2.37%	7.07%	1,381,220

\*Legend: Variation 1D: 1 Day; 5D: 5 Days; 1M: 1 Month; YTD: Var.% 12/31/21 to date

Mercado Evolución Intraday (var %)

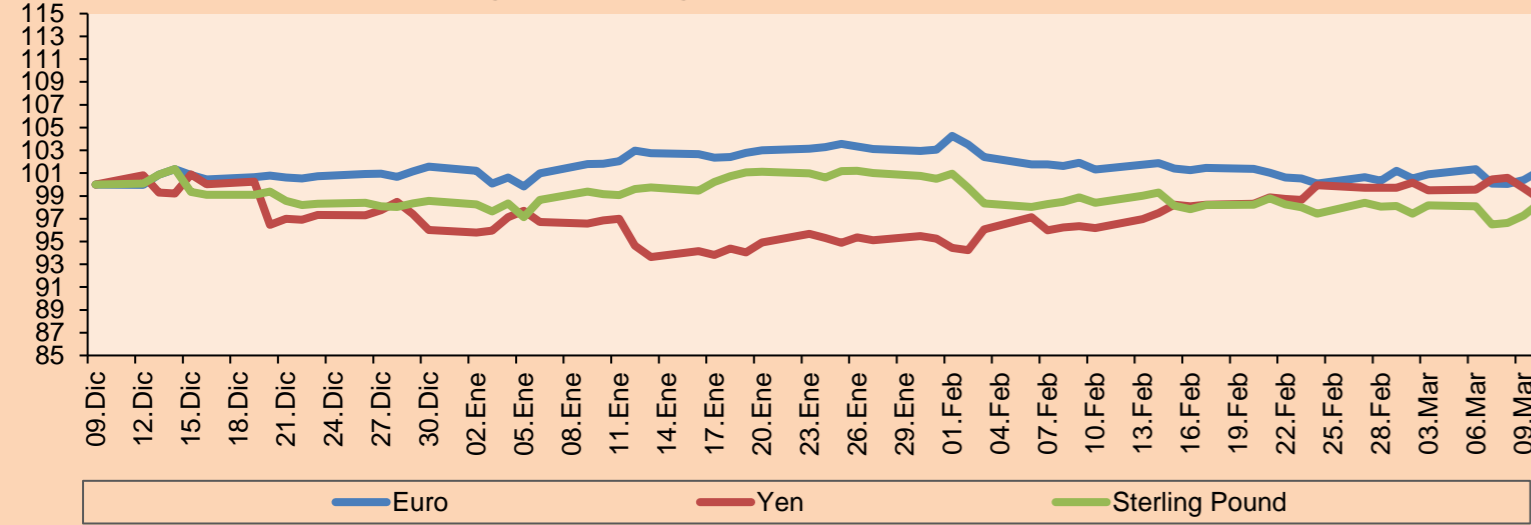


Source: Bloomberg

Currency	Price	1 D*	5 D*	1 M*	YTD*
▲ Euro	1.0664	0.78%	0.27%	-0.45%	-0.38%
▼ Yen	134.8600	-0.95%	-0.74%	2.63%	2.85%
▲ Sterling Pound	1.2056	1.10%	0.17%	-0.13%	-0.22%
▲ Yuan	6.9176	-0.68%	0.19%	1.85%	0.28%
▼ Hong Kong Dollar	7.8492	-0.01%	0.00%	-0.01%	0.61%
▲ Brazilian Real	5.1935	0.55%	-0.08%	-0.15%	-1.65%
▲ Argentine Peso	200.7595	0.20%	1.25%	5.71%	13.34%

\*Legend: Variation 1D: 1 Day; 5D: 5 Days; 1M: 1 Month; YTD: Var.% 12/31/21 to date

Foreign Exchange Indices (3 months)

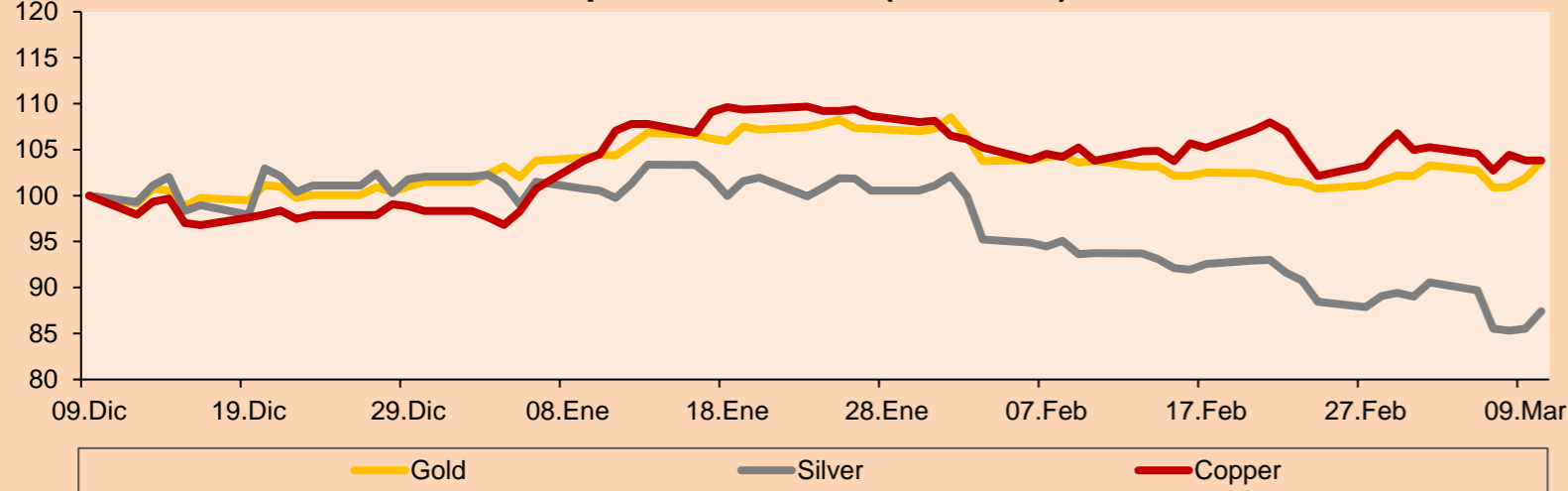


Base: 09/12/22=100  
Source: Bloomberg

Commodities	Close	1 D*	5 D*	1 M*	YTD*
▲ Oro (US\$ Oz. T) (LME)	1,864.26	1.81%	0.42%	-0.60%	2.21%
▲ Plata (US\$ Oz. T) (LME)	20.52	2.24%	-3.48%	-8.05%	-14.33%
- Cobre (US\$ TM) (LME)	8,832.30	0.00%	-1.36%	-0.35%	5.59%
- Zinc (US\$ TM) (LME)	2,994.50	0.00%	-3.42%	-5.45%	-0.29%
▲ Petróleo WTI (US\$ Barril) (NYM)	76.77	1.39%	-3.65%	-2.44%	-4.67%
- Estaño (US\$ TM) (LME)	23,148.00	0.00%	-5.98%	-15.90%	-6.49%
- Plomo (US\$ TM) (LME)	2,082.25	0.00%	-1.66%	-2.47%	-10.88%
▲ Azúcar #11 (US\$ Libra) (NYB-ICE)	21.18	0.14%	1.24%	6.59%	13.14%
▼ Cacao (US\$ TM) (NYB-ICE)	2,702.00	-1.10%	-2.10%	3.41%	3.88%
▲ Café Arábica (US\$ TM) (NYB-ICE)	177.55	1.43%	-0.17%	1.08%	6.35%

\*Leyenda: Variación 1D: 1 Día; 5D: 5 Días; 1M: 1 Mes; YTD: Var.% 31/12/21 a la fecha

Principal Metals Index (3 months)



Base: 09/12/22=100  
Source: Bloomberg

## Equity

Germany (Stocks from DAX Index)

Largest gains	Curr.	Price	▲%	Exchange	Largest losses	Curr.	Price	▼%	Exchange
FME GY	EUR	37.19	2.20	Xetra	DTG GY	EUR	31.03	-4.49	Xetra
DB1 GY	EUR	168.35	0.84	Xetra	CON GY	EUR	74.52	-3.47	Xetra
FRE GY	EUR	24.03	0.63	Xetra	CBK GY	EUR	11.41	-2.60	Xetra
EOAN GY	EUR	10.26	0.15	Xetra	ENR GY	EUR	19.86	-2.55	Xetra

Europe (Stocks from STOXX EUROPE 600)

Largest gains	Curr.	Price	▲%	Exchange	Largest losses	Curr.	Price	▼%	Exchange
LDO IM	EUR	11.025	2.85	Borsa Italiana	SOF BB	EUR	209.6	-7.58	EN Brussels
ERF FP	EUR	63.42	2.79	EN Paris	DBK GY	EUR	10.668	-7.35	Xetra
DRX LN	GBp	650.5	2.76	Londres	TECN SE	CHF	370.6	-7.16	SIX Swiss Ex
HBR LN	GBp	295.3	2.53	Londres	AZA SS	SEK	256.1	-7.14	Stockholm

## Global Overview:

### United States:

The U.S. market closed with mostly positive returns. Against the dollar fell 0.18% against a basket of global currencies ahead of Powell's announcement. Also, U.S. crude oil prices were up 0.98% per barrel and Brent closed 0.41% higher on the day. The DOW JONES finished with positive results, with the top gaining sectors being technology, with individual shares of Merck & Co up 3.95%, Apple up 1.85% and Coca-cola up 1.55% leading the session's gains. Online, Bloomberg published a list of companies listed in this index with possible bounces during the week; these are: ThredUp, Adial Pharma, Grindr and Calvo Growers. The S&P 500 index also ended with positive returns, featuring a rise in Treasury yields ahead of congressional testimony from Fed Chairman Jerome Powell and crucial jobs data later in the week. Finally, the NASDAQ index ended the day lower due to low investor expectations for Powell's future testimony later in the week. Thus, DOW JONES +0.12%, S&P 500 +0.07% and NASDAQ -0.11% ended the day with mostly positive results.

### Europe:

Major European indices ended the session with mixed performances. The pan-European STOXX 600 index closed lower as euro zone retail trade rose 0.3%, below market expectations of 1%. The UK market, reflected in the FTSE 100 closed with a -0.22% return, given the losses in materials stocks. However, leading figures in the UK economy stated that in the current economic crisis, the real damage to the economy is not seen. On the other hand, retail sales grew by 4.9%, exceeding market expectations. Similarly, the German market, reflected in the DAX index, closed in positive territory. This was the highest level since January 2022. At the same time, European Central Bank chief Lane suggested raising interest rates beyond the March meeting, as inflation remains high on the continent. The French market closed positive on the first day of the week, driven by luxury stocks, despite China's economic growth target of around 5% being at the lower end of expectations. Among individual stocks, Michelin (1.8%) posted the biggest gain, while ArcelorMittal was the biggest loser (-0.9%). Thus, FTSE 100 -0.22%; CAC 40 +0.34%; DAX +0.48%; STOXX 600 -0.02% ended mixed.

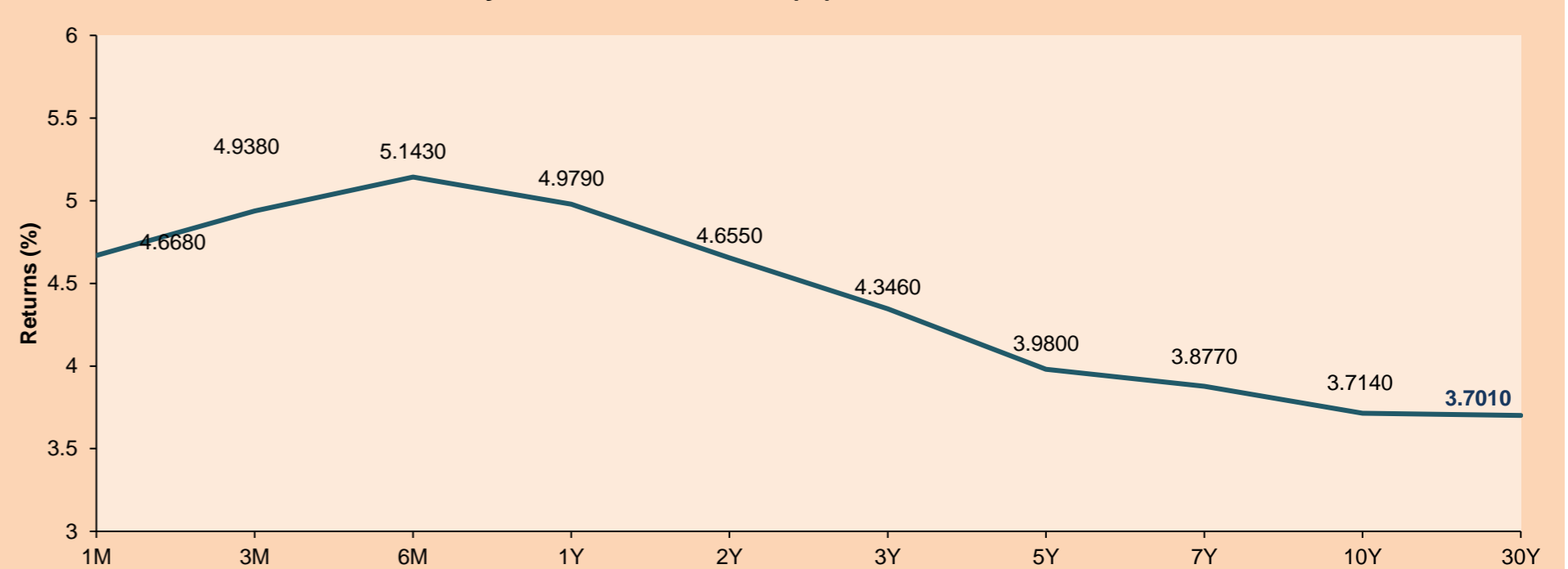
### Asia:

Major Asian indices closed with mixed performances. The Chinese market ended lower as Beijing disappointed markets by setting a modest economic growth target for this year. Premier Li Keqiang announced a 5% GDP target for China this year at the annual National People's Congress on Sunday, below market expectations. In line, the Hang Seng index closed with gains as the Chinese government announced it will take steps to minimize risks in the real estate sector, intensify its drive to make China self-sufficient in technology, and the PBoC will provide strong support for the economy's recovery. The South Korean market ended higher, against a backdrop where CPI rose 4.8% in February 2023 from a year ago, slowing from 5.2% in January and reaching the slowest pace in ten months. February's inflation rate was also below market expectations (5.05%), easing pressure on the central bank to continue raising interest rates. The Japanese market closed in positive territory as Japanese technology stocks followed in the bullish wake of their U.S. counterparts following the sharp drop in Treasury yields. Technology sector gains were led by SoftBank Group (2.7%), Tokyo Electron (3.1%) and Renesas Electronics (3.5%). The Australian market ended with gains as Australian tech stocks tracked gains in their U.S. counterparts following a sharp drop in Treasury yields. Sector gains were led by Block Inc (5.5%), Xero (3.8%) and Branchip Holdings (16.7%). Thus, NIKKEI +1.11%; HANG SENG +0.17%; CSI 300 -0.01%; S&P/ASX 200 +0.62%; KOSPI +1.26%; SHANGHAI COMPOSITE -0.19% ended with mixed performances.

## ETFs

ETFs	Curr.	Close	1D	5D	30 D	YTD	Exchange
SPDR S&P 500 ETF TRUST	USD	388.62	-0.75%	-3.85%	-5.36%	1.62%	NYSE Arca
ISHARES MSCI EMERGING MARKET	USD	38.04	0.00%	-3.79%	-5.82%	0.37%	NYSE Arca
ISHARES IBOXX HIGH YLD CORP	USD	73.50	0.09%	-1.64%	-3.10%	-0.18%	NYSE Arca
FINANCIAL SELECT SECTOR SPDR	USD	33.06	-1.43%	-8.14%	-10.11%	-3.33%	NYSE Arca
VANECK GOLD MINERS ETF	USD	27.51	3.09%	-3.93%	-9.43%	-4.03%	NYSE Arca
ISHARES RUSSELL 2000 ETF	USD	177.18	-2.33%	-7.48%	-8.06%	1.62%	NYSE Arca
SPDR GOLD SHARES	USD	173.09	1.70%	0.35%	-0.76%	2.03%	NYSE Arca
ISHARES 20+ YEAR TREASURY BO	USD	105.02	2.89%	3.07%	-0.52%	5.48%	NASDAQ GM
INVESCO QQQ TRUST SERIES 1	USD	290.80	-0.64%	-2.96%	-4.46%	9.21%	NASDAQ GM
ISHARES BIOTECHNOLOGY ETF	USD	122.64	-1.06%	-6.04%	-8.02%	-6.59%	NASDAQ GM
ENERGY SELECT SECTOR SPDR	USD	83.64	-0.07%	-4.15%	-4.48%	-4.38%	NYSE Arca
PROSHARES ULTRA VIX ST FUTUR	USD	6.00	15.83%	31.58%	17.19%	-12.54%	Cboe BZX
UNITED STATES OIL FUND LP	USD	67.27	1.55%	-3.71%	-2.05%	-4.05%	NYSE Arca
ISHARES MSCI BRAZIL ETF	USD	27.25	-1.66%	0.00%	-4.56%	-2.58%	NYSE Arca
SPDR S&P OIL & GAS EXP & PR	USD	130.29	-0.31%	-7.69%	-4.15%	-4.11%	NYSE Arca
UTILITIES SELECT SECTOR SPDR	USD	64.70	-1.15%	-2.34%	-3.88%	-8.23%	NYSE Arca
ISHARES US REAL ESTATE ETF	USD	83.23	-1.96%	-5.76%	-9.72%	-1.14%	NYSE Arca
SPDR S&P BIOTECH ETF	USD	75.86	-3.65%	-9.25%	-12.99%	-8.60%	NYSE Arca
ISHARES IBOXX INVESTMENT GRA	USD	106.63	1.25%	0.43%	-2.57%	1.14%	NYSE Arca
ISHARES JP MORGAN USD EMERGI	USD	84.89	0.81%	-0.46%	-2.54%	0.35%	NASDAQ GM
REAL ESTATE SELECT SECT SPDR	USD	36.59	-1.88%	-5.57%	-9.50%	-0.92%	NYSE Arca
ISHARES CHINA LARGE-CAP ETF	USD	27.45	0.20%	-7.31%	-9.87%	-3.02%	NYSE Arca
CONSUMER STAPLES SPDR	USD	71.21	-0.35%	-1.83%	-1.94%	-4.48%	NYSE Arca
VANECK JUNIOR GOLD MINERS	USD	33.36	2.99%	-5.01%	-9.47%	-6.42%	NYSE Arca
SPDR BLOOMBERG HIGH YIELD BO	USD	90.07	0.01%	-1.67%	-3.28%	0.08%	NYSE Arca
VANGUARD REAL ESTATE ETF	USD	81.89	-2.02%	-5.80%	-9.65%	-0.72%	NYSE Arca
GRAYSCALE BITCOIN TRUST BTC	USD	11.54	-2.22%	2.56%	-1.80%	39.19%	OTC US

USA Treasury Bonds Yield Curve (%)



Source: Bloomberg



# LIMA

## Stocks

	Ticker	Currency	Price	1D*	5D*	30D*	YTD*	Frequency	Volume (US\$)	Beta	Dividend Yield (%)	Price Earning	Market Cap. (M US\$)	Economic Sector*	Index Weight
▲	ALICORC1 PE**	S/.	6.28	0.34%	2.17%	2.71%	-5.41%	100.00%	11,265	0.59	3.98	9.76	1,413.60	Industrial	3.53%
#####	ATACOCB1 PE**	S/.	#N/A N/A	#iVALOR!	#iVALOR!	#iVALOR!	#iVALOR!	0.00%	10	0.00	0.00	0.00	#iVALOR!	Mining	1.02%
-	BACKUS1 PE**	S/.	25.05	0.00%	3.51%	-2.53%	1.91%	75.00%	76	0.76	0.00	8.02	8,751.94	Industrial	0.82%
▼	BAP PE**	US\$	129.91	-0.31%	-1.55%	-5.86%	-3.95%	100.00%	361,940	1.34	3.08	0.00	10,330.44	Diverse	5.82%
▲	BVN PE**	US\$	8.00	0.88%	-5.21%	4.30%	6.81%	100.00%	64,123	1.73	0.88	0.00	2,205.08	Mining	5.88%
-	CASAGRC1 PE**	S/.	8.70	0.00%	0.00%	8.75%	10.13%	65.00%	5,326	0.38	0.00	7.91	193.64	Agricultural	1.31%
▼	BBVAC1 PE**	S/.	1.69	-0.59%	-1.17%	-1.17%	0.00%	100.00%	5,818	0.35	6.25	5.91	3,296.49	Finance	2.85%
-	CORARE1 PE**	S/.	1.27	0.00%	1.60%	-2.31%	-9.29%	60.00%	13,819	0.62	0.00	4.11	531.99	Industrial	1.72%
-	CPACASC1 PE**	S/.	4.00	0.00%	1.27%	-0.50%	1.27%	95.00%	1,901	0.46	10.50	9.76	490.56	Industrial	2.38%
▼	CVERDEC1 PE**	US\$	28.47	-1.83%	-5.10%	-7.86%	-4.46%	65.00%	16,277	0.88	4.01	10.02	9,966.09	Mining	5.25%
-	ENGEPEC1 PE**	S/.	4.00	0.00%	0.00%	5.26%	11.11%	70.00%	11,210	0.83	0.00	8.96	1,847.32	Public Services	1.44%
-	ENDISPC1**	S/.	13.50	0.00%	0.00%	12.50%	90.14%	85.00%	28,583	0.90	1.91	17.98	2,277.81	Public Services	0.98%
-	FERREYC1 PE**	S/.	2.20	0.00%	-0.90%	0.00%	-1.35%	100.00%	12,146	0.63	11.81	4.40	549.95	Diverse	4.90%
-	AENZAC1 PE**	S/.	0.67	0.00%	3.08%	-11.84%	-19.28%	30.00%	3	0.00	0.00	0.00	211.91	Diverse	4.05%
▼	IFS PE**	US\$	23.00	-0.22%	-3.77%	-0.86%	-3.77%	95.00%	66,436	0.92	7.61	6.05	2,654.61	Diverse	7.22%
-	INRETC1 PE**	US\$	34.50	0.00%	0.00%	0.00%	4.51%	60.00%	11,523	0.50	2.00	18.87	3,751.77	Diverse	5.28%
-	LUSURC1 PE**	S/.	14.50	0.00%	1.40%	-2.03%	-4.61%	55.00%	6,973	0.00	0.00	11.04	1,865.66	Public Services	1.81%
-	MINSUR1 PE**	S/.	3.45	0.00%	-4.17%	-5.48%	-2.82%	95.00%	1,498	1.09	0.00	1.89	2,628.11	Mining	3.09%
-	PML PE**	US\$	0.08	0.00%	0.00%	0.00%	-11.11%	15.00%	1,056	0.00	0.00	0.00	21.94	Mining	2.12%
▲	SCCO PE**	US\$	73.68	0.60%	-5.54%	-0.43%	19.67%	90.00%	235,451	1.42	4.75	20.30	56,962.13	Industrial	2.12%
-	SIDERC1 PE**	S/.	1.72	0.00%	4.88%	7.50%	4.88%	80.00%	6,475	0.50	0.00	4.99	318.13	Mining	2.14%
-	TV PE**	US\$	0.00	0.00%	0.00%	0.00%	0.00%	0.00%	0	0.00	0.00	0.00	0.00	Industrial	1.43%
-	UNACEMC1 PE**	S/.	1.58	0.00%	0.00%	-11.73%	-12.22%	95.00%	5,700	0.98	5.70	0.00	759.03	Mining	2.93%
-	VOLCABC1 PE**	S/.	0.46	0.00%	-4.17%	-8.00%	-9.80%	100.00%	4,289	0.92	0.00	0.00	725.32	Industrial	3.00%
-	BROCALC1 PE**	S/.	6.13	0.00%	0.00%	-0.16%	0.16%	5.00%	16,081	0.00	0.00	0.00	263.20	Mining	5.90%
-	RIMSEGC1 PE**	S/.	0.75	0.00%	0.00%	0.00%	7.14%	5.00%	41	0.00	0.00	5.77	353.54	Finance	3.09%
-	CORAREC1 PE**	US\$	2.00	0.00%	2.56%	2.56%	4.17%	15.00%	1,548,118	0.00	0.00	6.48	2,013.37	Mining	2.12%
-	ENGIEC1 PE**	S/.	5.26	0.00%	0.00%	-1.50%	6.26%	35.00%	11,119	0.00	0.00	12.84	835.81	Diversas	2.12%
-	GBVLAC1 PE**	S/.	0.00	0.00%	0.00%	0.00%	0.00%	0.00%	0	0.00	0.00	0.00	0.00	Diversas	2.14%

Quantity of shares: 28  
Source: Bloomberg, Economática  
\* Bloomberg Industry Classification System  
\*\* PER is used in the stock market and original currency of the instrument

Up 3  
Down 4  
Hold 21

\*Legend: Variation 1D: 1 Day; 5D: 5 Days, 1M: 1 Month; YTD: Var.% 12/31/21 to date

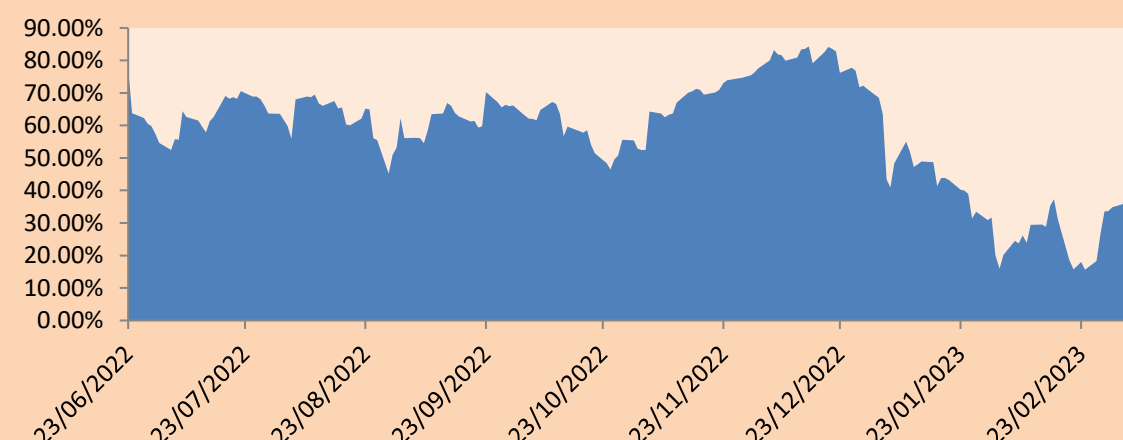
### Sectorial Indices

		Close	1D*	5D*	30D*	YTD*	Beta
▲	S&P/BVLMining	444.69	0.41%	-5.28%	-1.59%	13.05%	1.43
▼	S&P/BVLConsumer	1,232.29	-0.37%	0.31%	-1.23%	-0.10%	0.32
-	S&P/BVLIndustrials	233.01	0.00%	0.64%	-3.67%	-4.90%	0.31
▼	S&P/BVLFinancials	914.15	-0.24%	-1.66%	-7.05%	-4.29%	1.40
-	S&P/BVLConstruction	226.22	0.00%	1.40%	-5.32%	-6.51%	0.23
-	S&P/BVLPublicSvcs	1,007.70	0.00%	0.00%	5.59%	30.17%	0.23
-	S&P/BVLElectricUtil	983.77	0.00%	0.00%	5.59%	30.17%	0.23

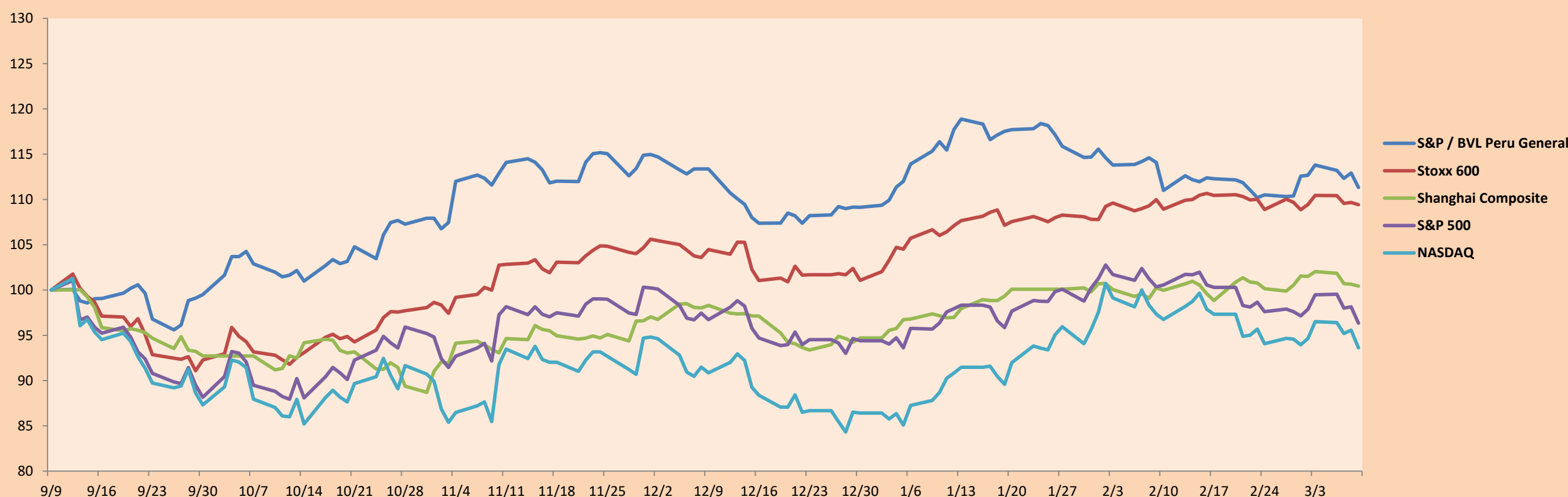
S&P/BVLConstructionTRPEN

\*Legend: Variation 1D: 1 Day; 5D: 5 Days, 1M: 1 Month; YTD: Var.% 12/31/21 to date

Correlation Graph of Returns of Mining Index against Metallic Index of London (3 months)



Indices (6 months)



Base: 09/09/22=100  
Source: Bloomberg

Capital Market Laboratory Coordinator: MS Javier Penny Pestana  
Collaboration: Mariafe Urrutia, Fedele Calle, Nikolas Díaz y Nadia Contreras  
email: pulsobursatil@ulima.edu.pe  
facebook: www.facebook.com/pulsobursatil.ul

## SOVEREIGN RATING

### RISK RATINGS

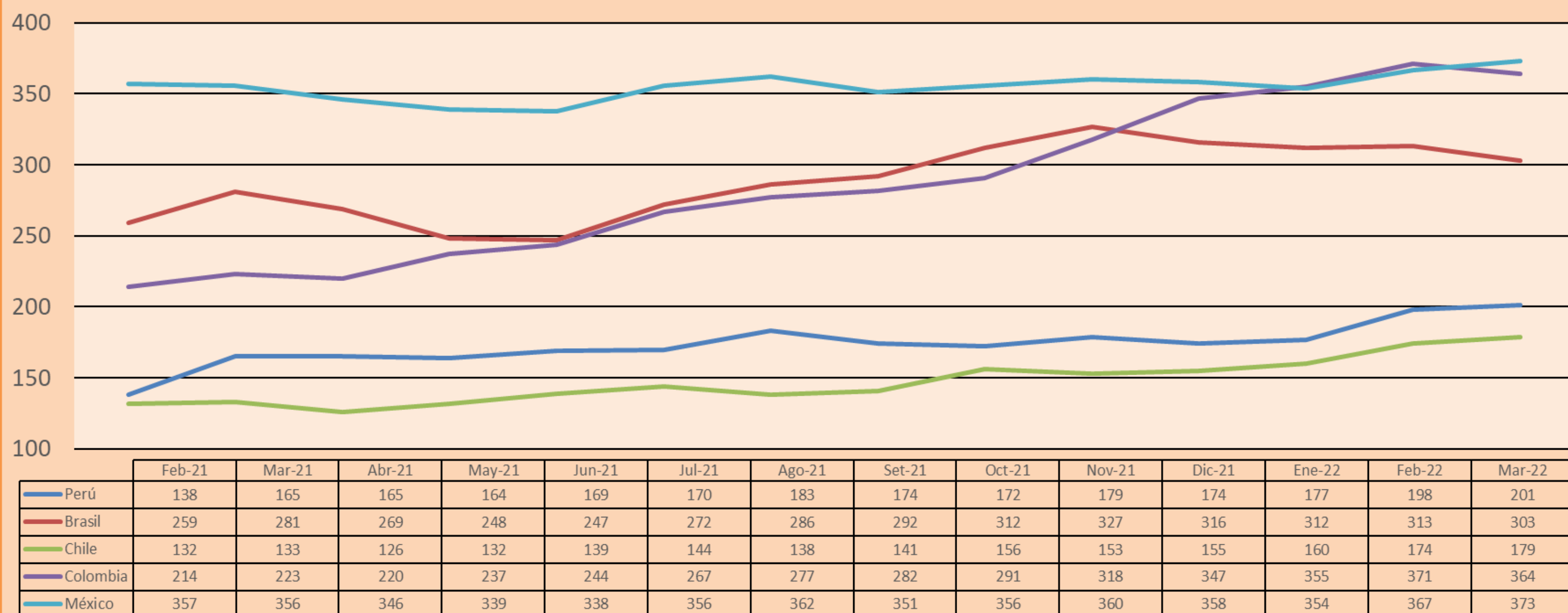
Moody's	S&P	Fitch	
Aaa	AAA	AAA	Prime
Aa1	AA+	AA+	High credit quality
Aa2	AA	AA	
Aa3	AA-	AA-	
A1	A+	A+	Medium-high grade, with low credit risk
A2	A	A	
A3	A-	A-	
Baa1	BBB+	BBB+	Moderate Credit Risk
Baa2	BBB	BBB	
Baa3	BBB-	BBB-	
Ba1	BB+	BB+	It has speculative elements and it is subject to substantial credit risk
Ba2	BB	BB	
Ba3	BB-	BB-	
B1	B+	B+	It is considered speculative and it has high credit risk
B2	B	B	
B3	B-	B-	
Caa1	CCC+	CCC	
Caa2	CCC	CCC	
Caa3	CCC-	CCC	
Ca	CC	CC	Very close to default or in default
	C	C	
C	D	DDD DD D	

Source: Bloomberg

Latin America Credit Rating			
Clasificadora de riesgo			
Country	Moody's	Fitch	S&P
Peru	Baa1	BBB	BBB
México	Ba2	BB-	BB-
Venezuela	C	WD	NR
Brazil	Ba2	BB-	BB-
Colombia	Baa2	BB+	BB+
Chile	A2	A-	A
Argentine	Ca	WD	CCC+
Panama	Baa2	BBB-	BBB

Source: Bloomberg

## LATAM Country Risk(bps)



Source: BCRP

Capital Market Laboratory Coordinator: MS Javier Penny Pestana  
Collaboration: Mariafe Urrutia, Fedele Calle, Nikolas Díaz y Nadia Contreras  
email: pulsobursatil@ulima.edu.pe  
facebook: www.facebook.com/pulsobursatil.ul