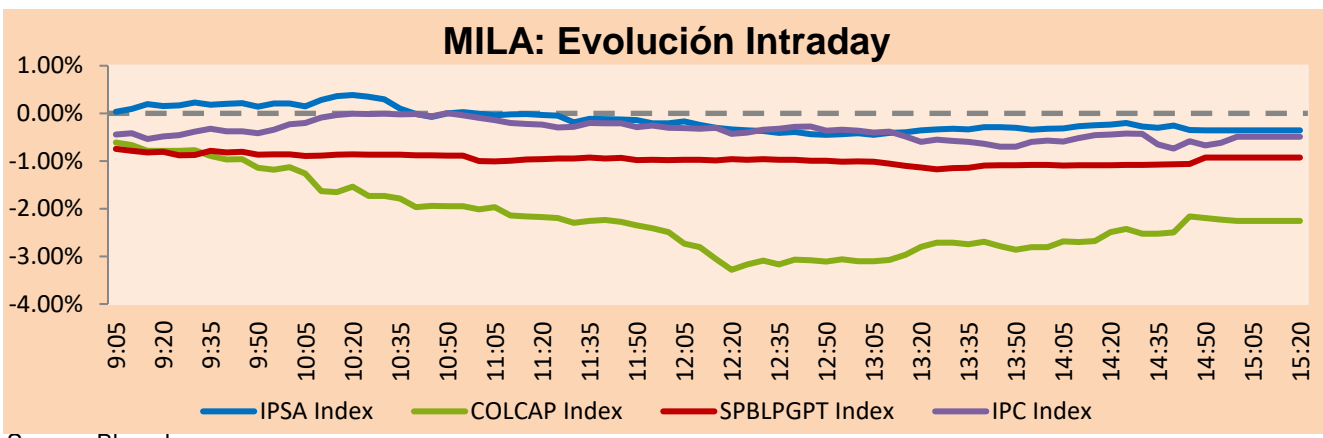


MILA

Lima, April 25, 2023

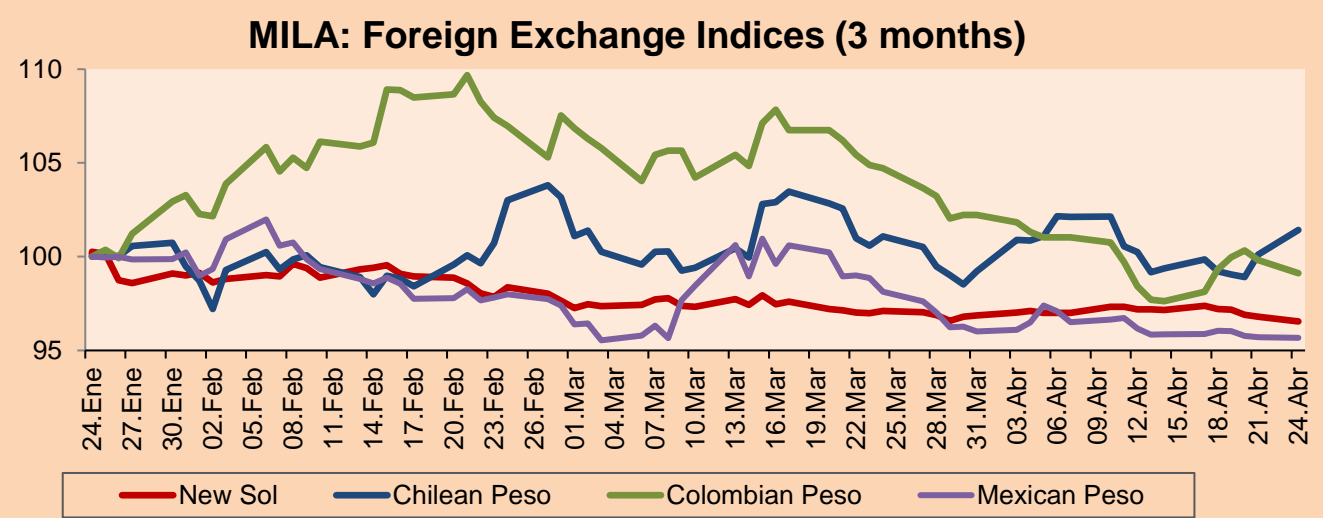
Main Indexes	Close	1 D	5 D	1 M	YTD	Cap. Burs. (US\$ bill)
▲ IPSA (Chile)	5,299.58	0.05%	-3.20%	0.97%	0.72%	115.52
▼ IGPA (Chile)	26,952.06	-0.07%	-4.76%	-1.49%	-2.37%	141.02
▼ COLSC (Colombia)	878.70	-0.80%	-1.29%	0.17%	-4.80%	3.53
▼ COLCAP (Colombia)	1,197.65	-2.25%	-4.58%	8.26%	-6.88%	59.34
▼ S&P/BVL (Perú)*	22,138.78	-0.93%	-1.65%	3.45%	3.79%	110.37
▼ S&P/BVL SEL (Perú)	566.79	-1.23%	-2.46%	2.22%	1.90%	93.58
▼ S&P/BVL LIMA 25	30,900.95	-0.61%	-0.89%	4.13%	2.61%	109.82
▼ IPC (México)	54,371.09	-0.63%	-0.03%	3.03%	12.19%	395.48
▼ S&P MILA 40	476.04	-1.65%	-5.44%	4.22%	3.61%	7,148.52

*Legend: Variation 1D: 1 day; 5D: 5 days; 1M: 1 Month; YTD: Var% 12/31/21 to date

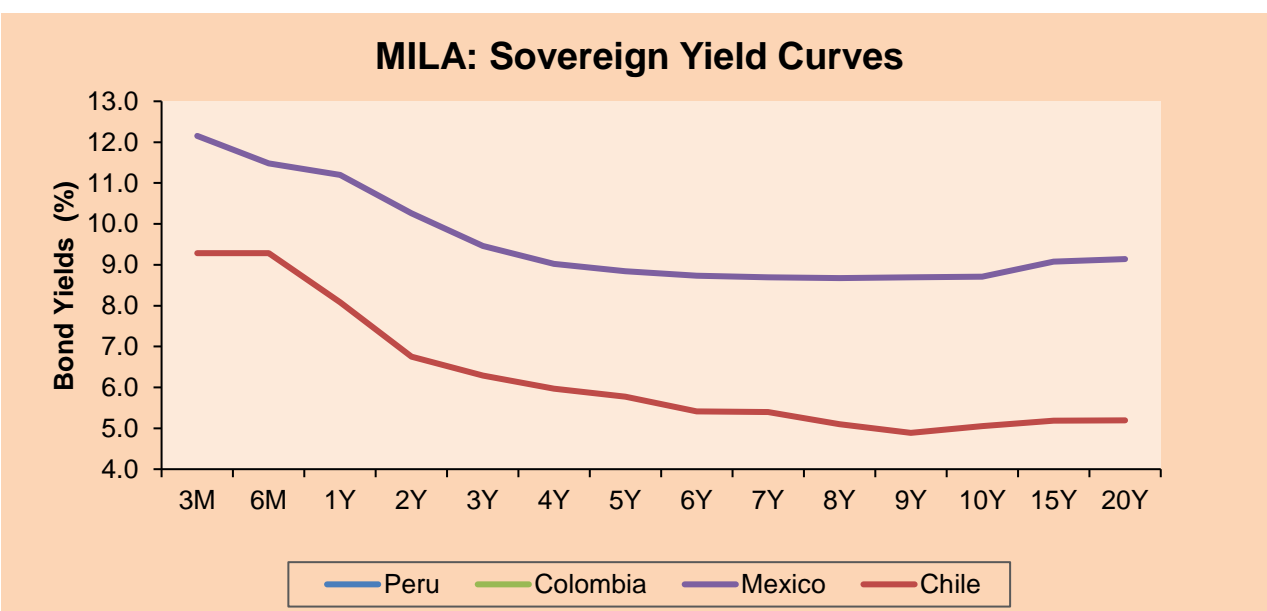


Currency	Price	1D*	5D*	30 D*	YTD*
▲ Sol (PEN)	3,7551	0.11%	-0.58%	-0.48%	-1.34%
▼ Chilean Peso (CLP)	812.20	-0.11%	2.10%	0.24%	-4.57%
▼ Colombian Peso (COP)	4,477.33	-0.12%	-0.31%	-5.46%	-7.73%
▲ Mexican Peso (MXN)	18.08	0.52%	0.12%	-2.00%	-7.30%

*Legend: Variation 1D: 1 day; 5D: 5 days; 1M: 1 Month; YTD: Var% 12/31/21 to date



Fixed Income	Currency	Price	Bid Yield (%)	Ask Yield (%)	Duration
PERU 7.35 07/21/25	USD	105.653	4.76	4.54	2.01
PERU 4.125 08/25/27	USD	98.45	4.57	4.48	3.86
PERU 8.75 11/21/33	USD	127.806	5.32	5.24	7.10
PERU 6.55 03/14/37	USD	111.483	5.41	5.32	8.80
PERU 5.625 11/18/2050	USD	103.34	5.42	5.37	13.71
CHILE 2.25 10/30/22	USD	-	-	-	-
CHILE 3.125 01/21/26	USD	97.327	4.26	4.08	2.55
CHILE 3.625 10/30/42	USD	81.607	5.17	5.09	12.96
COLOM 11.85 03/09/28	USD	121.141	6.75	6.62	3.74
COLOM 10.375 01/28/33	USD	116.795	8.04	7.71	6.20
COLOM 7.375 09/18/37	USD	95.531	7.96	7.84	8.55
COLOM 6.125 01/18/41	USD	81.279	8.20	8.08	9.68
MEX 4 10/02/23	USD	81.279	8.197	8.076	9.68
MEX5.55 01/45	USD	96.255	5.89	5.82	12.19



Equity

Largest gains	Exchange	Currency	Price	▲%
Cervezas	Chile	CLP	6400.00	3.23
Colbún SA	Chile	CLP	111.00	1.83
Grupo Aeroportua	Mexico	MXN	186.03	1.58
Gruma Sab-B	Mexico	MXN	263.92	1.53
SMU SA	Chile	CLP	142.40	1.47

Per Turnover	Exchange	Amount (US\$)
Soquimich-B	Chile	73,383,145
Grupo F Banort-O	Mexico	38,782,739
Walmart de Méx-V	Mexico	33,177,351
Cencosud Sa	Chile	27,413,999
Grupo México-B	Mexico	19,566,125

Largest losses	Exchange	Currency	Price	▼%
Ecopetrol	Colombia	COP	2235	-6.29
SOUTHERN COPPER	Peru	USD	75.5	-5.25
Cap	Chile	CLP	5801	-4.27
Chocolates	Colombia	COP	55170	-3.30
Grupo Telev-Cpo	Mexico	MXN	17.06	-3.18

Per Volume	Exchange	Volume
Banco Santander	Chile	90,808,274
ENEL CHILE SA	Chile	46,525,990
Banco de Chile	Chile	34,515,140
Cemex Sab-Cpo	Mexico	27,766,538
Cencosud Sa	Chile	13,730,662

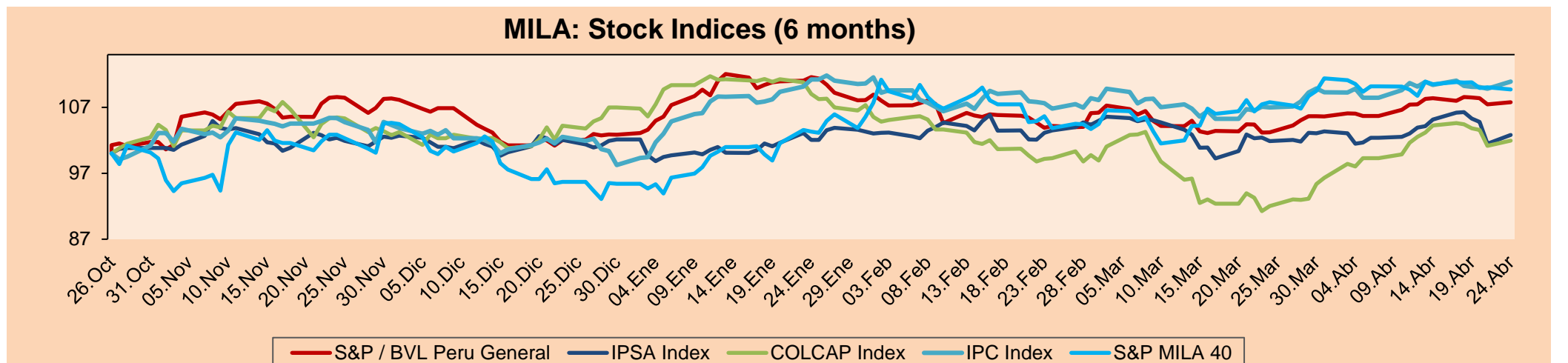
MILA

Peru: The BVL General index ended today's session with a negative result of -0.92%. The index maintains a positive annual cumulative trend of +3.79% in local currency and a positive cumulative trend of +5.20% in dollar-adjusted currency. Regarding the S&P/BVL Peru SEL, it varied by -1.23% while the S&P/BVL LIMA 25 by -0.61%. The spot PEN reached S/.3.7551. Headline: Petroperu's President resigns due to possible disagreement with Minem.

Chile: The IPSA index ended the day with a positive return of +0.05%. The most benefited sectors of the day were Energy (+1.28%) and Non Basic Consumer Products (+0.88%). The best performing stocks were Compañías Cerveceras Unidas (+3.23%) and Colbún SA (+1.83%). Headline: Chile's SQM hopes to reach agreement with Boric's government to continue producing lithium.

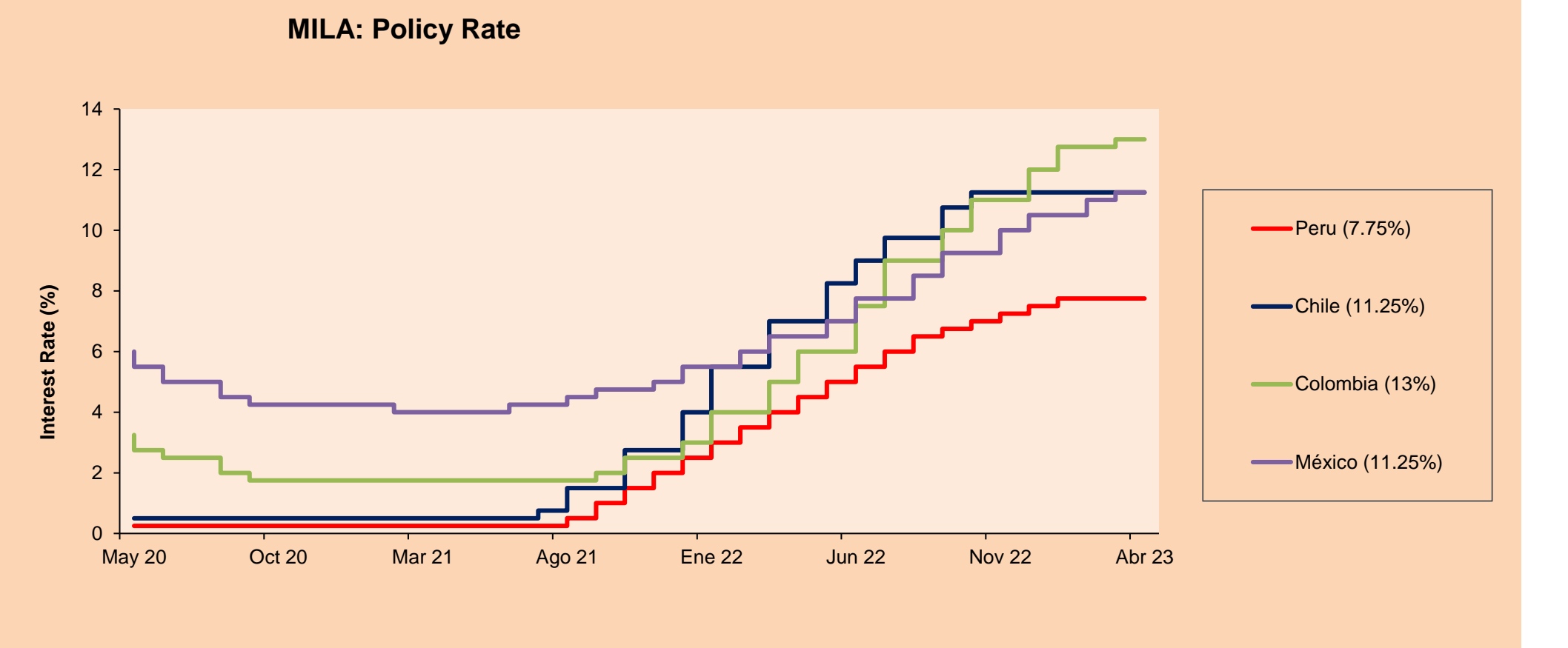
Colombia: The COLCAP index ended the session with a negative return of -2.25%. The sectors that benefited the least during the day were Energy (-5.99%) and Consumer Staples (-3.30%). The worst performing stocks were Ecopetrol SA (-6.29%) and Grupo Nutresa SA (-3.30%). Headline: Ecopetrol seeks to boost oil production despite limitations.

Mexico: The IPC index closed the day in negative territory of -0.63%. The sectors that lost the most during the day were Real Estate (-3.82%) and Communication Services (-1.46%). The worst performing stocks were Volara (-7.01%) and Regional SAB (-5.88%). Headline: Super peso pressures América Móvil's service revenues.



ETFs

ETFs	Curr.	Close	1D	5D	30 D	YTD	Exchange
▼ iShares MSCI All Peru Caped Index Fund	USD	30.67	-1.89%	-3.10%	5.43%	6.98%	NYSE Arca
▼ iShares MSCI All Chile Caped Index Fund	USD	27.64	-0.04%	-6.75%	-0.58%	2.03%	Cboe BZX
Global X MSCI Colombia	USD	-	-	-	-	-	-
▼ iShares MSCI Mexico Capped	USD	59.58	-1.31%	-0.22%	4.45%	20.49%	NYSE Arca
▼ iShares MSCI Emerging Markets	USD	38.19	-1.88%	-4.14%	-1.24%	0.77%	NYSE Arca
▼ Vanguard FTSE Emerging Markets	USD	39.22	-1.70%	-3.87%	-1.23%	0.62%	NYSE Arca
▼ iShares Core MSCI Emerging Markets	USD	47.35	-1.93%	-4.17%	-1.04%	1.39%	NYSE Arca
▼ iShares JP Morgan Emerging Markets Bonds	USD	54.8	-0.69%	-1.46%	1.29%	3.30%	Cboe BZX
▼ Morgan Stanley Emerging Markets Domestic	USD	4.71	-0.21%	0.43%	4.67%	7.05%	New York

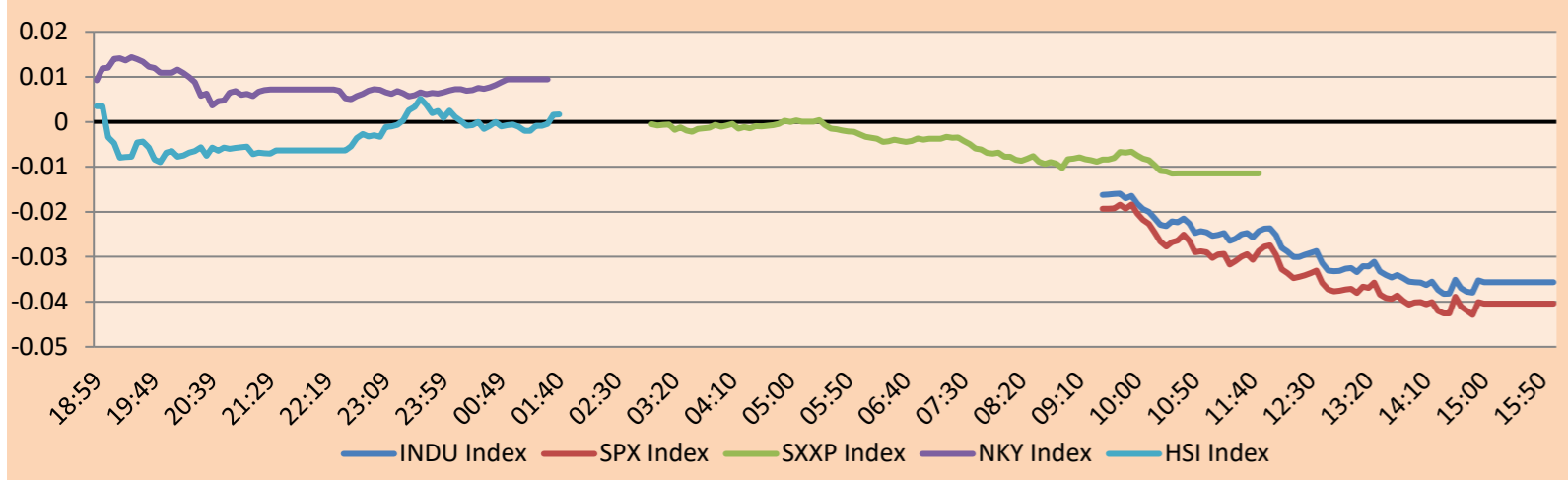


WORLD

Main Indices	Close	1 D*	5 D*	1 M*	YTD*	Market Cap. (US\$ Mill.)
▼ Dow Jones (USA)	33,530.83	-1.02%	-1.31%	4.01%	1.16%	10,606,835
▼ Standard & Poor's 500 (EEUU)	4,071.63	-1.58%	-2.00%	2.53%	6.05%	36,023,765
▼ NASDAQ Composite (USA)	11,799.16	-1.98%	-2.91%	-0.21%	12.73%	20,305,479
▼ Stoxx EUROPE 600 (Europe)	467.08	-0.40%	-0.33%	6.13%	9.93%	11,631,850
▲ DAX (Germany)	15,872.13	0.05%	-0.07%	6.12%	13.99%	1,401,203
▼ FTSE 100 (United Kingdom)	7,891.13	-0.27%	-0.23%	6.56%	5.90%	1,724,809
▼ CAC 40 (France)	7,531.61	-0.56%	-0.03%	7.36%	16.34%	2,269,210
▼ IBEX 35 (Spain)	9,290.30	-1.23%	-1.40%	5.66%	12.90%	549,943
▼ MSCI AC Asia Pacific Index	159.81	-0.62%	-2.36%	0.68%	3.25%	21,497,204
▼ HANG SENG (Hong kong)	19,617.88	-1.71%	-5.00%	-1.50%	-0.83%	3,186,126
▼ SHANGHAI SE Comp. (China)	3,264.87	-0.32%	-3.79%	-0.02%	5.68%	6,888,050
▲ NIKKEI 225 (Japan)	28,620.07	0.09%	-0.14%	4.51%	9.68%	3,818,805
▼ S&P / ASX 200 (Australia)	7,321.99	-0.11%	-0.81%	5.27%	4.02%	1,625,136
▼ KOSPI (South Korea)	2,489.02	-1.37%	-3.19%	3.07%	11.30%	1,428,331

*Legend: Variation 1D: 1 Day; 5D: 5 Days; 1M: 1 Month; YTD: Var.% 12/31/21 to date

Mercado Evolución Intraday (var %)

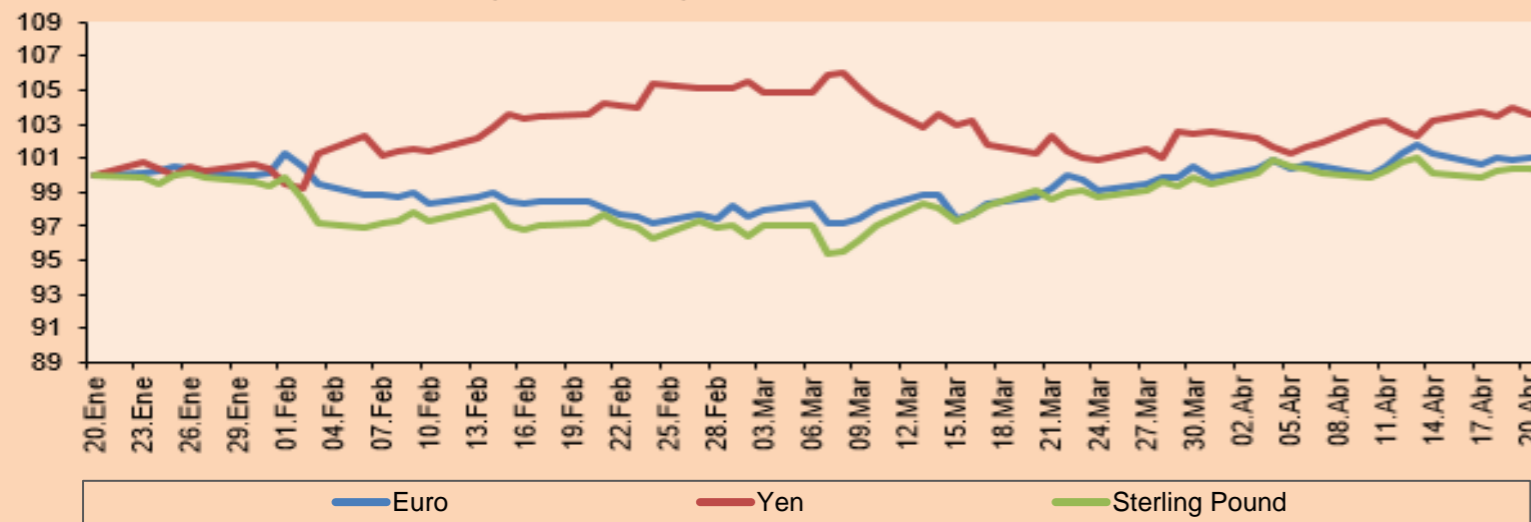


Source: Bloomberg

Currency	Price	1 D*	5 D*	1 M*	YTD*
▼ Euro	1.0973	-0.66%	0.01%	1.98%	2.50%
▼ Yen	133.7600	-0.36%	-0.27%	2.32%	2.01%
▼ Sterling Pound	1.2409	-0.62%	-0.13%	1.44%	2.70%
▲ Yuan	6.9326	0.53%	0.82%	0.95%	0.49%
▲ Hong Kong Dollar	7.8499	0.01%	0.00%	0.00%	0.62%
▲ Brazilian Real	5.0524	0.35%	1.33%	-3.70%	-4.32%
▲ Argentine Peso	220.8830	0.30%	1.83%	7.35%	24.70%

*Legend: Variation 1D: 1 Day; 5D: 5 Days; 1M: 1 Month; YTD: Var.% 12/31/21 to date

Foreign Exchange Indices (3 months)

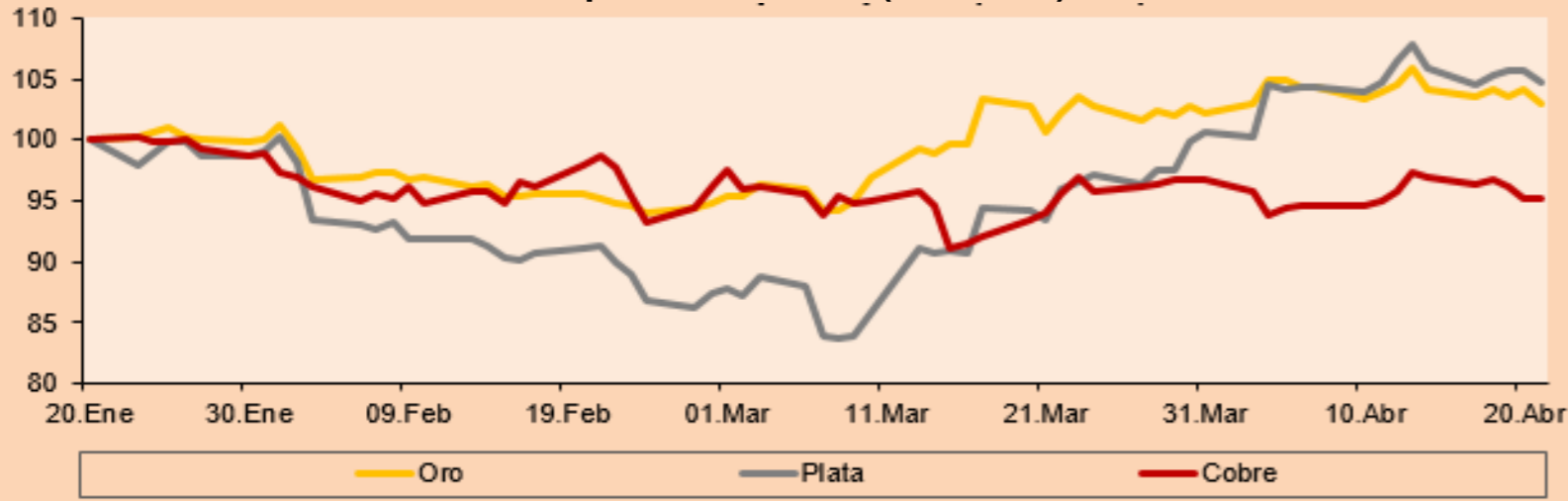


Base: 24/01/23=100
Source: Bloomberg

Commodities	Close	1 D*	5 D*	1 M*	YTD*
▲ Oro (US\$ Oz. T) (LME)	1,997.39	0.41%	-0.40%	0.97%	9.50%
▼ Plata (US\$ Oz. T) (LME)	25.01	-0.58%	-0.71%	7.69%	4.42%
- Cobre (US\$ TM) (LME)	8,710.00	0.00%	-3.27%	-2.26%	4.13%
- Zinc (US\$ TM) (LME)	2,657.25	0.00%	-7.73%	-9.10%	-11.52%
▼ Petróleo WTI (US\$ Barril) (NYM)	77.07	-2.15%	-4.73%	11.04%	-3.90%
- Estaño (US\$ TM) (LME)	26,822.50	0.00%	-4.57%	7.53%	8.36%
- Plomo (US\$ TM) (LME)	2,176.50	0.00%	-0.07%	1.26%	-6.85%
▲ Azúcar #11 (US\$ Libra) (NYB-ICE)	25.97	2.57%	8.48%	27.68%	44.44%
▲ Cacao (US\$ TM) (NYB-ICE)	2,928.00	-1.28%	-1.25%	3.32%	12.62%
▼ Café Arábica (US\$ TM) (NYB-ICE)	188.40	-2.61%	-7.21%	5.66%	13.09%

*Leyenda: Variación 1D: 1 Día; 5D: 5 Días; 1M: 1 Mes; YTD: Var.% 31/12/21 a la fecha

Principal Metals Index (3 months)



Base: 24/01/23=100
Source: Bloomberg

Equity

Germany (Stocks from DAX Index)

Largest gains	Curr.	Price	▲%	Exchange	Largest losses	Curr.	Price	▼%	Exchange
DB1 GY	EUR	186.3	1.83	Xetra	CBK GY	EUR	10.335	-2.87	Xetra
DTE GY	EUR	22.23	0.77	Xetra	DPW GY	EUR	42.585	-2.53	Xetra
ENR GY	EUR	21.13	0.62	Xetra	MRK GY	EUR	161.55	-2.45	Xetra
BMW GY	EUR	101.44	0.28	Xetra	HEN3 GY	EUR	72.7	-2.10	Xetra

Europe (Stocks from STOXX EUROPE 600)

Largest gains	Curr.	Price	▲%	Exchange	Largest losses	Curr.	Price	▼%	Exchange
WOSG LN	GBp	820	7.68	Londres	BOL SS	SEK	366.6	-7.07	Stockholm
EMBRACB SS	SEK	49.225	4.66	Stockholm	EVT GY	EUR	16.675	-6.21	Xetra
WTB LN	GBp	3259	4.25	Londres	RAND NA	EUR	48.39	-6.15	EN Amsterdam
NOVN SE	CHF	93.12	4.03	SIX Swiss Ex	SAN SQ	EUR	3.33	-5.97	Soc.Bol SIBE

Global Overview:

United States:

The U.S. market closed with negative returns. The DOW JONES ended with losses, as investors analyze the latest corporate results for clues about the health of the US economy. Similarly, the market is awaiting results from tech giants such as Microsoft and Alphabet. On the data front, consumer confidence fell to the lowest since July. The S&P 500 index also ended with negative returns, with all eleven sectors in the red, with the biggest losses in the materials, technology and consumer retail sectors. Regarding yields, First Republic (49.4%) plunged, after the bank reported deposits declined 41%; United Parcel (-10%), PepsiCo (+2.5%) and McDonald's (-0.5%) gave up after its quarterly results are released. Finally, the NASDAQ index ended the day lower. Among the worst performers were TRACON Pharmaceuticals Inc (-46.63%), Tempo Automation Holdings Inc (-42.25%) and Nanobiotix (-39.95%). A drop in semiconductors also weighed on the index. Thus, DOW JONES -1.02%, S&P 500 -1.58% and NASDAQ -1.98%.

Europe:

The main European indices ended the session with mostly negative returns, amid expectations that the Federal Reserve will soon halt its tightening cycle. The pan-European STOXX 600 index closed lower, amid investors' expectations of further rate hikes by the ECB next week. However, the magnitude of the move is not definite, with most investors betting on a 25 basis point hike, while others expect a larger one of 50 basis points. The UK market, reflected in the FTSE 100, was driven by losses in the mining sector, new energy and healthcare stocks. Meanwhile, companies with notable losses were Tianqi Lithium (-7.8%), Wuxi Apttec (-10%) and Shijiazhuang Yilin (-6.7%). Similarly, the German market, reflected in the DAX index closed in slightly negative territory, as the basic materials, financials and energy sectors were the worst performers. In addition, UBS reported a 52% decline in its first quarter net profit, mainly due to a \$665 million increase in provisions following litigation over residential mortgage-backed securities in the United States. The French market closed with a negative margin, dragged down by the banking sector, which was affected by the downward trend in U.S. financial institutions. Santander shares also plunged almost 6% despite the lender's earnings beating estimates. Thus, FTSE 100 -0.27%; CAC 40 -0.56%; DAX +0.05%; STOXX 600 -0.40% ended with negative results.

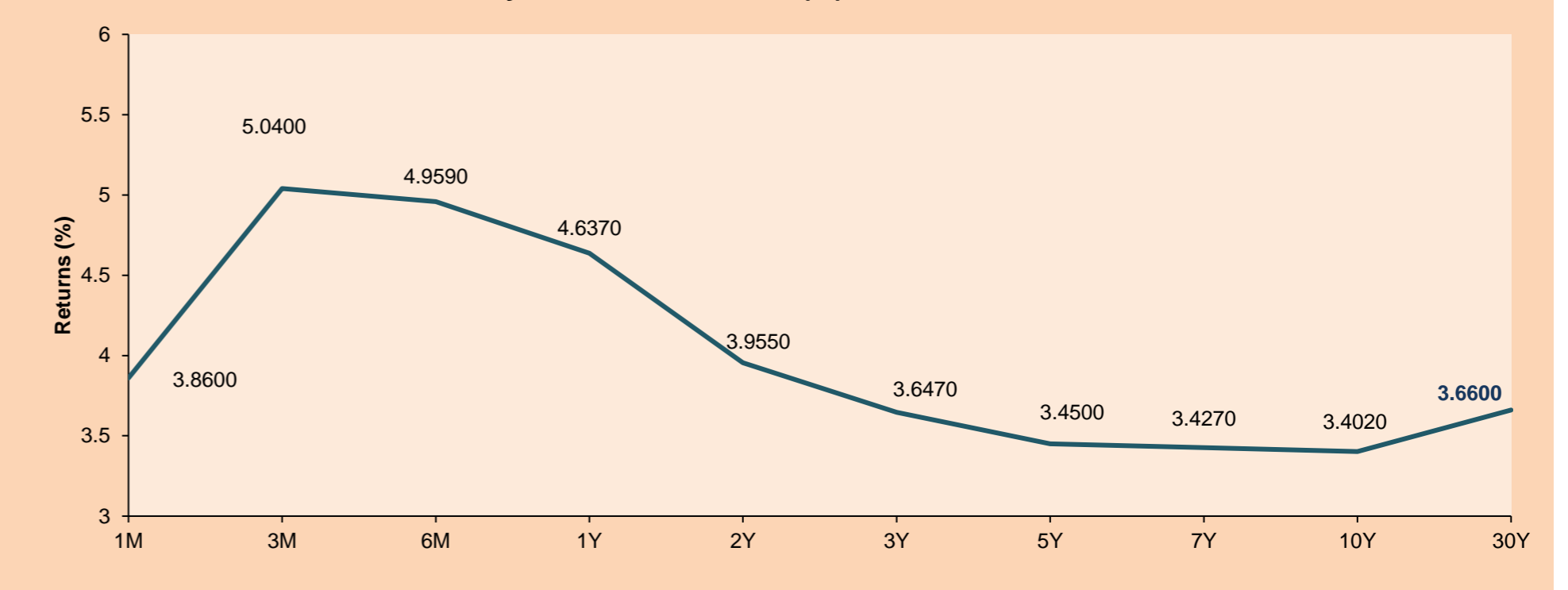
Asia:

The main Asian indices closed with mixed performances. The Chinese market ended lower, where stocks fell for the fifth consecutive session, due to concerns about the sustainability of the country's economic recovery. In addition, poor first quarter corporate results were highlighted. On the other hand, the Hang Seng index closed with losses, where the session was marked by technology stocks which were the worst performers. The South Korean market ended with negative results, where it added its fourth consecutive fall caused by the decline of technology stocks. Although the Composite Consumer Sentiment Index (ICSC) and consumer confidence data showed positive results. The Japanese market closed in positive territory, rising for the second consecutive session due to optimism about earnings and improved risk sentiment. In addition, the Bank of Japan is expected to maintain its low interest rate policy in order to achieve price stability. The Australian market ended with losses, mainly due to the materials and energy sector. Thus, NIKKEI +0.09%; HANG SENG -1.71%; CSI 300 -0.50%; S&P/ASX 200 -0.11%; KOSPI -1.37%, SHANGHAI COMPOSITE -0.32% ended with mixed performances.

ETFs

ETFs	Curr.	Close	1D	5D	30 D	YTD	Exchange
SPDR S&P 500 ETF TRUST	USD	406.08	-1.59%	-1.96%	2.61%	6.18%	NYSE Arca
ISHARES MSCI EMERGING MARKET	USD	38.19	-1.88%	-4.14%	-1.24%	0.77%	NYSE Arca
ISHARES IBOXX HIGH YLD CORP	USD	75.08	-0.16%	-0.07%	2.01%	1.97%	NYSE Arca
FINANCIAL SELECT SECTOR SPDR	USD	32.57	-1.72%	-2.37%	5.10%	-4.77%	NYSE Arca
VANECK GOLD MINERS ETF	USD	33.77	0.18%	-2.26%	7.04%	17.83%	NYSE Arca
ISHARES RUSSELL 2000 ETF	USD	173.06	-2.47%	-2.79%	0.74%	-0.75%	NYSE Arca
SPDR GOLD SHARES	USD	185.75	0.51%	-0.27%	1.14%	9.50%	NYSE Arca
ISHARES 20+ YEAR TREASURY BO	USD	106.96	1.47%	2.65%	0.10%	7.43%	NASDAQ GM
INVESCO QQQ TRUST SERIES 1	USD	309.99	-1.89%	-2.78%	-0.29%	16.42%	NASDAQ GM
ISHARES BIOTECHNOLOGY ETF	USD	130.50	-1.92%	-1.63%	3.68%	-0.60%	NASDAQ GM
ENERGY SELECT SECTOR SPDR	USD	84.66	-1.88%	-2.17%	8.69%	-3.21%	NYSE Arca
PROSHARES ULTRA VIX ST FUTUR	USD	4.19	11.73%	11.14%	-22.69%	-38.92%	Cboe BZX
UNITED STATES OIL FUND LP	USD	67.62	-2.35%	-4.40%	10.93%	-3.55%	NYSE Arca
ISHARES MSCI BRAZIL ETF	USD	27.61	-1.43%	-4.83%	7.56%	-1.29%	NYSE Arca
SPDR S&P OIL & GAS EXP & PR	USD	125.02	-3.27%	-4.97%	4.43%	-7.99%	NYSE Arca
UTILITIES SELECT SECTOR SPDR	USD	69.90	-0.10%	1.44%	6.41%	-0.85%	NYSE Arca
ISHARES US REAL ESTATE ETF	USD	83.29	-1.06%	-1.66%	3.22%	-1.07%	NYSE Arca
SPDR S&P BIOTECH ETF	USD	80.01	-1.49%	-1.62%	7.84%	-3.60%	NYSE Arca
ISHARES IBOXX INVESTMENT GRA	USD	109.96	0.44%	0.83%	0.45%	4.30%	NYSE Arca
ISHARES JP MORGAN USD EMERGI	USD	85.57	0.61%	0.29%	0.21%	1.16%	NASDAQ GM
REAL ESTATE SELECT SECT SPDR	USD	36.74	-0.92%	-1.69%	3.46%	-0.51%	NYSE Arca
ISHARES CHINA LARGE-CAP ETF	USD	27.35	-2.70%	-6.88%	-5.13%	-3.36%	NYSE Arca
CONSUMER STAPLES SPDR	USD	76.78	-0.13%	1.17%	5.22%	2.99%	NYSE Arca
VANECK JUNIOR GOLD MINERS	USD	40.03	-0.57%	-3.43%	5.65%	12.29%	NYSE Arca
SPDR BLOOMBERG HIGH YIELD BO	USD	92.18	-0.18%	-0.05%	2.15%	2.42%	NYSE Arca
VANGUARD REAL ESTATE ETF	USD	81.25	-0.99%	-1.74%	3.12%	-1.49%	NYSE Arca
GRAYSCALE BITCOIN TRUST BTC	USD	14.96	-0.20%	-12.72%	-6.50%	80.46%	OTC US

USA Treasury Bonds Yield Curve (%)



Source: Bloomberg

LIMA

Stocks

Ticker	Currency	Price	1D*	5D*	30D*	YTD*	Frequency	Volume (US\$)	Beta	Dividend Yield (%)	Price Earning	Market Cap. (M US\$)	Economic Sector*	Index Weight
▼ ALICORC1 PE**	S/.	6.50	-0.80%	-1.29%	0.17%	-4.80%	94.44%	8,881	0.57	4.28	10.20	1,474.87	Industrial	3.53%
- ATACOCB1 PE**	S/.	0.00	0.00%	0.00%	0.00%	0.00%	0.00%	11	0.00	0.00	-	-	Mining	1.02%
- BACKUS1 PE**	S/.	25.50	0.00%	-6.59%	-2.86%	3.74%	83.33%	20	0.67	0.00	8.16	8,643.97	Industrial	0.82%
▼ BAP PE**	US\$	133.80	-0.15%	1.19%	7.43%	-1.07%	94.44%	41,212	1.30	2.99	-	10,639.78	Diverse	5.82%
▼ BVN PE**	US\$	7.49	-1.32%	-5.19%	-8.10%	0.00%	100.00%	184,042	1.61	1.87	-	2,064.50	Mining	5.88%
▲ CASAGRC1 PE**	S/.	10.30	1.48%	12.57%	25.61%	30.38%	88.89%	9,473	0.00	7.03	9.36	231.05	Agricultural	1.31%
- BBVAC1 PE**	S/.	1.68	0.00%	-7.69%	-1.75%	-0.59%	88.89%	727	0.35	0.00	6.61	3,302.73	Finance	2.85%
- CORARE1 PE**	S/.	1.18	0.00%	-7.09%	-5.60%	-15.71%	100.00%	1,681	0.62	0.00	3.82	536.54	Industrial	1.72%
▼ CPACASC1 PE**	S/.	3.90	-1.27%	0.00%	-3.70%	-1.27%	94.44%	24,210	0.38	10.77	9.51	477.77	Industrial	2.38%
▼ CVERDEC1 PE**	US\$	29.00	-1.69%	-5.81%	1.75%	-2.68%	88.89%	37,506	0.76	4.93	10.21	10,151.62	Mining	5.25%
- ENGEPEC1 PE**	S/.	4.10	0.00%	1.23%	7.89%	13.89%	94.44%	53,730	0.75	15.49	9.18	1,908.38	Public Services	1.44%
▲ ENDISPC1**	S/.	16.10	0.63%	-0.37%	19.26%	126.76%	94.44%	319,541	0.77	2.16	21.44	2,737.84	Public Services	0.98%
▼ FERREYC1 PE**	S/.	2.15	-0.92%	1.42%	0.00%	-3.59%	100.00%	40,585	0.43	12.37	4.88	541.67	Diverse	4.90%
- AENZAC1 PE**	S/.	0.60	0.00%	0.00%	-7.69%	-27.71%	38.89%	744	0.00	0.00	-	191.26	Diverse	4.05%
▼ IFS PE**	US\$	23.30	-1.89%	-1.89%	4.02%	-2.51%	100.00%	107,821	1.03	7.51	6.07	2,689.93	Diverse	7.22%
- INRETC1 PE**	US\$	32.60	0.00%	-0.46%	-2.98%	-1.24%	83.33%	652	0.53	0.00	17.66	3,545.15	Diverse	5.28%
- LUSURC1 PE**	S/.	14.90	0.00%	2.76%	7.97%	-1.97%	50.00%	3,470	0.00	0.00	11.35	1,932.19	Public Services	1.81%
▼ MINSURI1 PE**	S/.	3.80	-0.52%	-4.76%	9.20%	7.04%	94.44%	6,733	1.01	9.85	2.11	2,917.47	Mining	3.09%
▼ PML PE**	US\$	0.09	-18.18%	-18.18%	12.50%	0.00%	50.00%	9,303	0.00	0.00	-	24.59	Mining	2.12%
▼ SCCO PE**	US\$	75.50	-5.25%	-7.36%	5.74%	22.62%	88.89%	51,340	1.59	4.64	20.80	58,369.18	Industrial	2.12%
- SIDERC1 PE**	S/.	1.49	0.00%	-0.67%	-13.37%	-9.15%	83.33%	2,180	0.34	9.59	4.74	277.76	Mining	2.14%
▼ UNACEMC1 PE**	S/.	1.58	-0.63%	-4.24%	1.28%	-12.22%	83.33%	10,485	0.87	5.70	-	765.00	Mining	2.93%
▼ VOLCABC1 PE**	S/.	0.50	-1.96%	-1.96%	8.70%	-1.96%	94.44%	49,127	0.85	0.00	-	934.29	Industrial	3.00%
- BROCALC1 PE**	S/.	5.50	0.00%	5.77%	-6.30%	-10.13%	33.33%	1,508	0.00	0.00	-	235.05	Mining	5.90%
- RIMSEGC1 PE**	S/.	0.75	0.00%	0.00%	0.00%	7.14%	33.33%	2,690	0.00	0.00	4.52	356.32	Finance	3.09%
- CORAREC1 PE**	US\$	2.02	0.00%	0.00%	-1.46%	5.21%	16.67%	90	0.00	0.00	6.54	2,014.77	Mining	2.12%
- ENGIEC1 PE**	S/.	5.41	0.00%	-0.92%	2.85%	9.29%	38.89%	14,407	0.00	0.00	13.33	866.40	Diversas	2.12%
- GBVLAC1 PE**	S/.	2.65	0.00%	0.00%	4.33%	1.92%	16.67%	9,835	0.00	0.00	25.42	128.50	Diversas	2.14%

Quantity of shares: 28
 Source: Bloomberg, Economática
 * Bloomberg Industry Classification System
 ** PER is used in the stock market and original currency of the instrument
 *Legend: Variation 1D: 1 Day; 5D: 5 Days, 1M: 1 Month; YTD: Var.% 12/31/21 to date

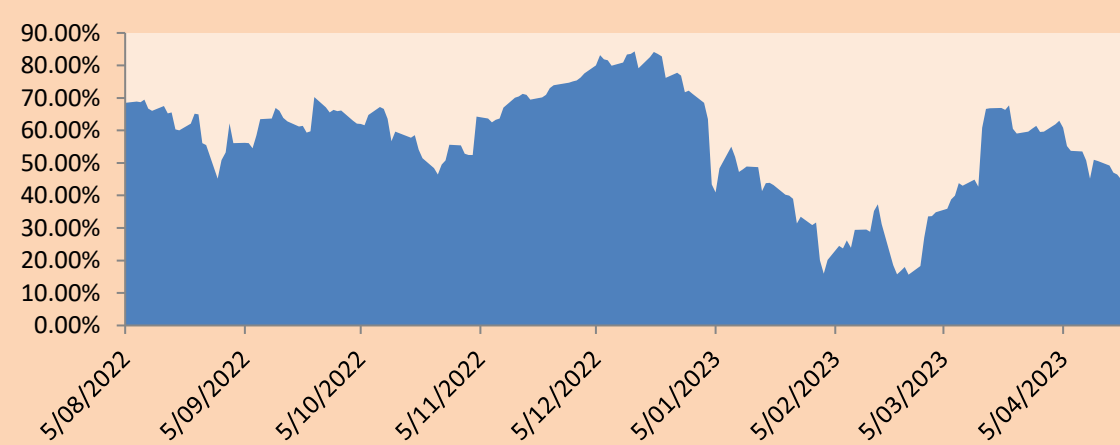
Sectorial Indices

	Close	1D*	5D*	30D*	YTD*	Beta
▼ S&P/BVLMining	447.96	-3.94%	-6.82%	2.77%	13.88%	1.62
▲ S&P/BVLConsumer	1,252.06	0.36%	0.53%	1.43%	1.50%	0.30
▼ S&P/BVLIndustrials	232.77	-0.64%	-0.70%	0.73%	-5.00%	0.17
▼ S&P/BVLFinancials	936.96	-0.18%	0.60%	6.90%	-1.90%	1.38
▼ S&P/BVLConstruction	221.55	-0.51%	-1.67%	-1.93%	-8.44%	0.16
▲ S&P/BVLPublicSvcs	1,113.41	0.26%	-0.10%	12.15%	43.82%	0.40
▲ S&P/BVLElectricUtil	1,086.97	0.26%	-0.10%	12.15%	43.82%	0.40

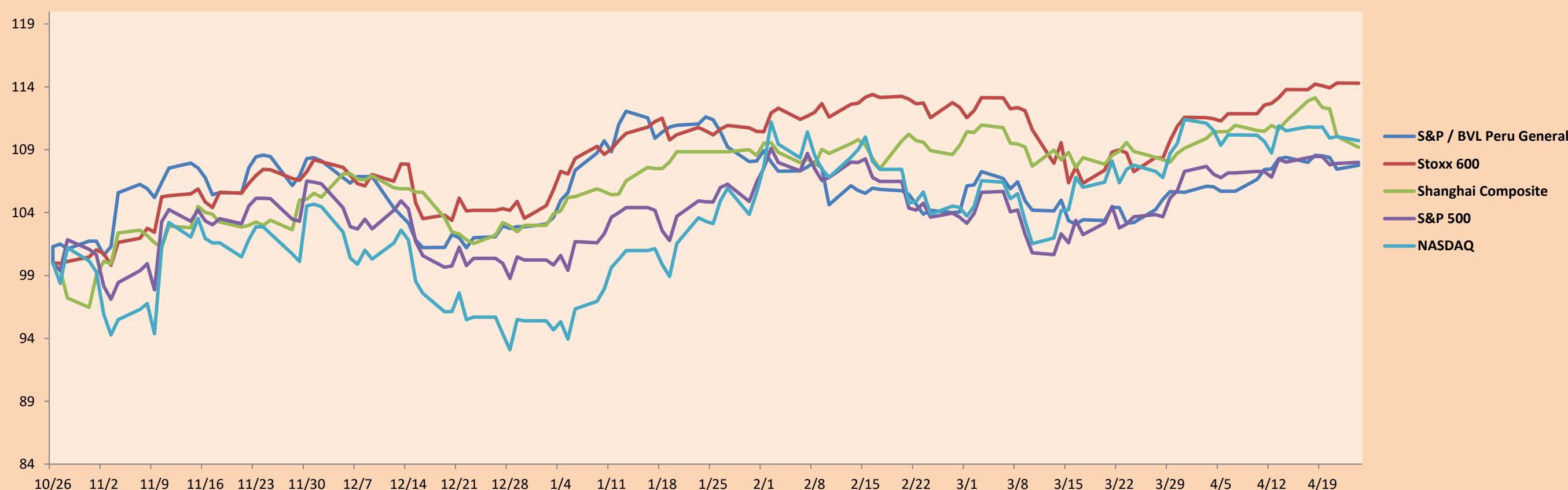
S&P/BVLConstructionTRPEN

*Legend: Variation 1D: 1 Day; 5D: 5 Days, 1M: 1 Month; YTD: Var.% 12/31/21 to date

Correlation Graph of Returns of Mining Index against Metallic Index of London (3 months)



Indices (6 months)



Base: 26/10/22=100
 Source: Bloomberg

Capital Market Laboratory Coordinator: MS Javier Penny Pestana
 Collaboration: Nikolas Díaz, Nadia Contreras, Joseph Martínez y Marcelo Cossar
 email: pulsobursatil@ulima.edu.pe
 facebook: www.facebook.com/pulsobursatil.ul

SOVEREIGN RATING

RISK RATINGS

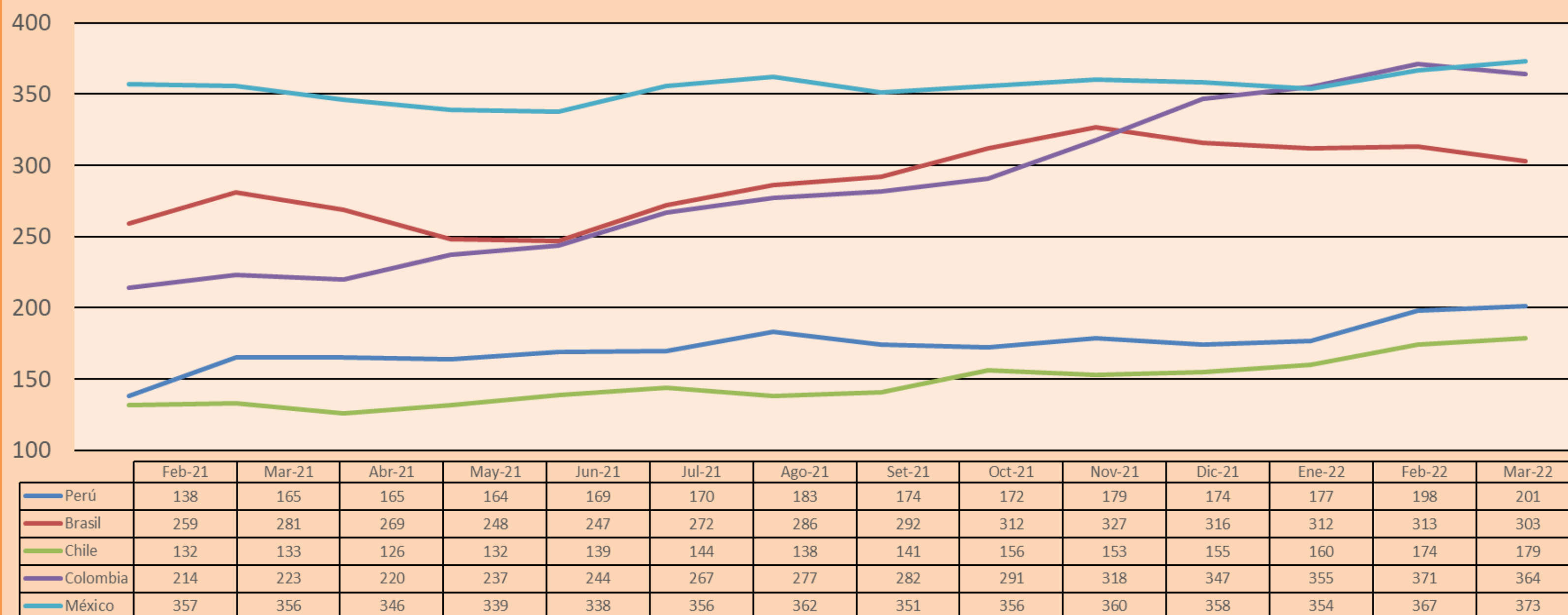
Moody's	S&P	Fitch	
Aaa	AAA	AAA	Prime
Aa1	AA+	AA+	High credit quality
Aa2	AA	AA	
Aa3	AA-	AA-	
A1	A+	A+	Medium-high grade, with low credit risk
A2	A	A	
A3	A-	A-	
Baa1	BBB+	BBB+	Moderate Credit Risk
Baa2	BBB	BBB	
Baa3	BBB-	BBB-	
Ba1	BB+	BB+	It has speculative elements and it is subject to substantial credit risk
Ba2	BB	BB	
Ba3	BB-	BB-	
B1	B+	B+	It is considered speculative and it has high credit risk
B2	B	B	
B3	B-	B-	
Caa1	CCC+	CCC	
Caa2	CCC	CCC	
Caa3	CCC-	CCC	
Ca	CC	CC	Very close to default or in default
	C	CC	
C	D	DD	

Source: Bloomberg

Latin America Credit Rating			
Clasificadora de riesgo			
Country	Moody's	Fitch	S&P
Peru	Baa1	BBB	BBB
México	Ba2	BB-	BB-
Venezuela	C	WD	NR
Brazil	Ba2	BB-	BB-
Colombia	Baa2	BB+	BB+
Chile	A2	A-	A
Argentine	Ca	WD	CCC-
Panama	Baa2	BBB-	BBB

Source: Bloomberg

LATAM Country Risk(bps)



Source: BCRP

Capital Market Laboratory Coordinator: MS Javier Penny Pestana
Collaboration: Nikolas Díaz, Nadia Contreras, Joseph Martínez y Marcelo Cossar
email: pulsobursatil@ulima.edu.pe
facebook: www.facebook.com/pulsobursatil.ul