

PULSO BURSÁTIL

FACULTAD DE CIENCIAS EMPRESARIALES Y ECONÓMICAS
CARRERA DE ECONOMÍA
LABORATORIO DE MERCADO DE CAPITALES

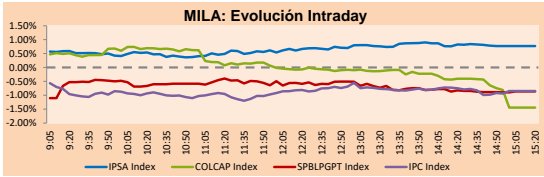


MILA

Lima, May 11, 2023

Main Indexes	Close	1 D	5 D	1 M	YTD	Cap. Burs. (US\$ bill)
▲ IPSA (Chile)	5,600.00	0.55%	4.16%	5.52%	6.43%	123.10
▲ IGPA (Chile)	28,534.24	0.93%	5.06%	4.18%	3.36%	149.99
▼ COLCAP (Colombia)	870.78	-0.17%	-1.83%	-0.28%	-5.66%	3.47
▼ COLCAP (Colombia)	1,143.42	-1.44%	-1.31%	-6.39%	-11.09%	55.68
▼ S&P/BVL (Perú)*	21,715.12	-0.86%	0.44%	-2.51%	1.80%	106.26
▼ S&P/BVL SEL (Perú)	545.51	-1.52%	-0.77%	-4.76%	-1.93%	90.01
▼ S&P/BVL LIMA 25	30,087.69	-0.29%	-0.05%	-2.84%	-0.09%	105.71
▼ IPC (México)	55,014.16	-0.94%	0.63%	0.75%	13.52%	412.52
▼ S&P MILA 40	481.57	-1.15%	1.74%	-0.87%	4.81%	7,251.39

*Legend: Variation 1D: 1 day; 5D: 5 days; 1M: 1 Month; YTD: Var% 12/31/22 to date

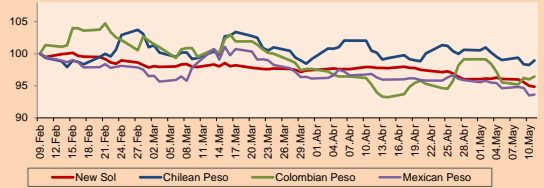


Source: Bloomberg

Currency	Price	1D*	5D*	30D*	YTD*
▼ Sol (PEN)	3,663.00	-0.16%	-1.47%	-3.12%	-3.76%
▲ Chilean Peso (CLP)	793.95	0.73%	-0.57%	-1.51%	-6.72%
▲ Colombian Peso (COP)	4,567.13	0.44%	-0.78%	1.28%	-5.88%
▲ Mexican Peso (MXN)	17.58	0.16%	-1.87%	-3.31%	-9.85%

*Legend: Variation 1D: 1 day; 5D: 5 days; 1M: 1 Month; YTD: Var% 12/31/22 to date

MILA: Foreign Exchange Indices (3 months)

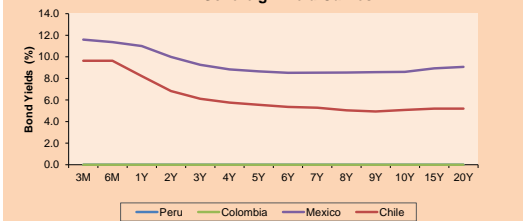


Base: 09/02/23=100
Source: Bloomberg

Fixed Income

	Currency	Price	Bid Yield (%)	Ask Yield (%)	Duration
PERU 7.35 07/21/25	USD	105.743	4.67	4.43	1.97
PERU 4.125 08/25/27	USD	98.926	4.46	4.35	3.82
PERU 8.75 11/21/33	USD	128.296	5.27	5.17	7.08
PERU 6.55 03/14/37	USD	111.615	5.40	5.31	8.80
PERU 5.625 11/18/2050	USD	102.79	5.46	5.40	13.75
CHILE 2.45 01/31/31	USD	89.006	4.18	4.08	6.80
CHILE 3.125 01/21/26	USD	97.643	4.14	3.98	2.52
CHILE 3.625 10/30/42	USD	82.042	5.13	5.05	13.32
COLOM 11.85 03/09/28	USD	119.506	7.07	6.94	3.69
COLOM 10.375 01/28/33	USD	113.963	8.43	8.08	6.12
COLOM 7.375 09/18/37	USD	94.119	8.13	8.02	8.48
COLOM 6.125 01/18/41	USD	79.427	8.43	8.32	9.57
MEX 4 10/02/23	USD	79.427	8.428	8.321	9.57
MEX5.55 01/45	USD	94.864	6.01	5.94	12.15

MILA: Sovereign Yield Curves



Source: Bloomberg

Equity

Largest gains	Exchange	Currency	Price	▲%
Soquimich-B	Chile	CLP	58951.00	4.34
Grupo Elektra SAB	Mexico	MXN	1191.19	2.95
Falabella	Chile	CLP	1789.00	2.82
Andina-A Pref	Chile	CLP	2080.00	2.46
Ferreyros-Común	Peru	PEN	2.13	1.43

Per Turnover	Exchange	Amount (US\$)
Walmart de Méx-V	Mexico	61,275,095
Soquimich-B	Chile	53,050,482
Grupo México-B	Mexico	47,375,918
Grupo F Banort-O	Mexico	45,976,232
Kimberly-Cla M-A	Mexico	45,135,918

Largest losses	Exchange	Currency	Price	▼%
Bolsa Mexicana	Mexico	MXN	38.33	-6.74
SOUTHERN COPPER	Peru	USD	69.83	-4.99
Empresa de Energ	Colombia	COP	1664	-4.86
Grupo México-B	Mexico	MXN	80.1	-4.54
Industrias Peñol	Mexico	MXN	269.93	-3.95

Per Volume	Exchange	Volume
Banco de Chile	Chile	108,365,471
ENEL CHILE SA	Chile	85,921,755
Banco Santander	Chile	57,806,007
Cemex Sab-Cpo	Mexico	42,714,521
Kimberly-Cla M-A	Mexico	20,297,757

MILA

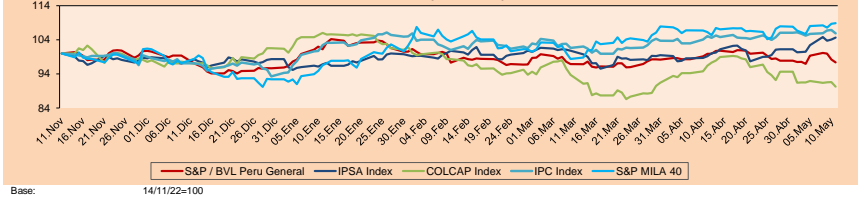
Peru: The BVL General Index ended today's session with a negative result of -0.86%. The index maintains a positive cumulative annual trend of +1.80% in local currency and a positive cumulative trend of +5.78% in dollar-adjusted currency. Regarding the S&P/BVL Peru SEL, it varied by -1.52% while the S&P/BVL LIMA 25 by -0.29%. The spot PEN reached \$J.3.6630. Headline: Petroperu seeks new debt for up to US\$ 1200 mln.

Chile: The IPSA index ended the day with a negative return of +0.53%. The most negatively affected sectors of the day were Real Estate (-0.97%) and Utilities (-0.81%). The worst performing stocks were Cencosud Shopping SA (-2.53%), SMU SA (-2.24%) and Enel Americas (-1.62%). Headline: Chile does have room for growth this year; the Ministry of Finance adjusts the outlook to 0.3%.

Colombia: The COLCAP index ended the session with a negative return of -1.44%. The sectors that lost the least during the day were Consumer Staples (-3.52%) and Utilities (-2.64%). The worst performing stocks were Inversiones Argo SA (-5.45%) and Empresa de Energía de Bogotá (-4.86%). Headline: CITI recommends Colombia rate cut due to disinflation.

Mexico: The IPC index closed the day in negative territory at -0.94%. The sectors that lost the most during the day were Materials (-2.49%) and Finance (-1.94%). The worst performing stocks were Bolsa Mexicana de Valores (-6.74%) and Grupo Mexico SAB (-4.54%). Headline: Real estate market grows in Mexico's least violent state: Yucatan.

MILA: Stock Indices (6 months)

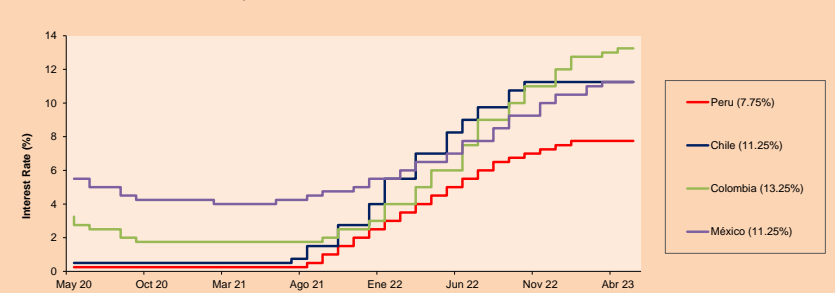


Base: 14/11/22=100
Source: Bloomberg

ETFs

	Curr.	Close	1D	5D	30 D	YTD	Exchange
▼ iShares MSCI All Peru Caped Index Fund	USD	30.69	-1.48%	0.43%	-1.25%	7.05%	NYSE Arca
▲ iShares MSCI All Chile Caped Index Fund	USD	30.14	0.80%	5.75%	7.37%	11.26%	Cboe BZX
Global X MSCI Colombia	USD						
▼ iShares MSCI Mexico Capped	USD	62.21	-1.08%	2.71%	4.61%	25.80%	NYSE Arca
▼ iShares MSCI Emerging Markets	USD	39.01	-0.36%	0.36%	-1.66%	2.93%	NYSE Arca
▼ Vanguard FTSE Emerging Markets	USD	40.06	-0.40%	0.10%	-1.57%	2.77%	NYSE Arca
▼ iShares Core MSCI Emerging Markets	USD	48.39	-0.49%	0.14%	-1.65%	3.62%	NYSE Arca
▼ iShares JP Morgan Emerging Markets Bonds	USD	55.88	-0.59%	-0.13%	1.47%	5.33%	Cboe BZX
▼ Morgan Stanley Emerging Markets Domestic	USD	4.7	-1.88%	-0.42%	1.95%	6.82%	New York

MILA: Policy Rate



Source: Bloomberg

Capital Market Laboratory Coordinator: MS Javier Penny Pestana
Collaboration: Nadia Contreras, Nikolas Díaz, Joseph Martínez y Marcelo Cossar
email: pulsobursatil@ulima.edu.pe

PULSO BURSÁTIL

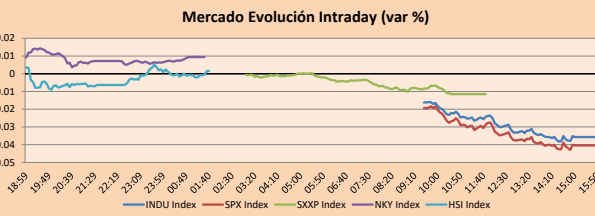
FACULTAD DE CIENCIAS EMPRESARIALES Y ECONÓMICAS
CARRERA DE ECONOMÍA
LABORATORIO DE MERCADO DE CAPITALES



WORLD

Main Indices	Close	1 D*	5 D*	1 M*	YTD*	Market Cap. (US\$ Mill.)
▼ Dow Jones (USA)	33,309.51	-0.66%	0.55%	-1.11%	0.49%	10,851,650
▲ Standard & Poor's 500 (EEUU)	4,130.62	-0.17%	1.71%	0.53%	7.58%	35,997,272
▲ NASDAQ Composite (USA)	12,328.51	0.18%	3.03%	2.47%	17.79%	20,708,600
- Stoxx EUROPE 600 (Europe)	463.62	0.00%	0.71%	0.27%	9.12%	11,542,030
▼ DAX (Germany)	15,834.91	-0.39%	0.64%	0.84%	13.73%	1,382,175
▼ FTSE 100 (United Kingdom)	7,730.58	-0.14%	-0.74%	-1.20%	3.74%	1,677,296
▲ CAC 40 (France)	7,381.78	0.28%	0.56%	-0.20%	14.03%	2,240,839
▲ IBEX 35 (Spain)	9,182.80	0.16%	1.54%	-1.03%	11.59%	546,340
▼ MSCI AC Asia Pacific Index	161.62	-0.23%	-0.10%	-0.06%	4.02%	21,690,570
▼ HANG SENG (Hong Kong)	19,743.79	-0.09%	-1.03%	-2.79%	-0.19%	3,179,366
▼ SHANGHAI SE Comp. (China)	3,309.55	-0.29%	-1.22%	-0.53%	7.13%	6,976,034
▼ NIKKEI 225 (Japan)	29,126.72	0.02%	0.01%	3.72%	11.62%	3,879,657
▼ S&P / ASX 200 (Australia)	7,251.92	-0.05%	0.82%	-1.25%	3.03%	1,623,991
▼ KOSPI (South Korea)	2,491.00	-0.22%	-0.42%	-2.34%	11.38%	1,437,003

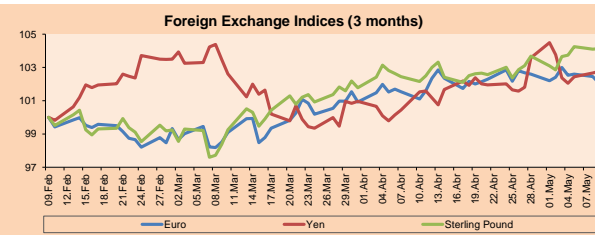
*Legend: Variation 1D: 1 Day; 5D: 5 Days; 1M: 1 Month; YTD: Var.% 12/31/22 to date



Source: Bloomberg

Currency	Price	1 D*	5 D*	1 M*	YTD*
▼ Euro	1.0916	-0.60%	-0.87%	0.04%	1.97%
▲ Yen	134.5300	0.14%	0.18%	0.64%	2.60%
▼ Sterling Pound	1.2511	-0.90%	-0.50%	0.70%	3.54%
▲ Yuan	6.9489	0.27%	0.54%	0.91%	0.73%
▲ Hong Kong Dollar	7.8358	0.05%	-0.15%	-0.18%	0.44%
▼ Brazilian Real	4.9315	-0.26%	-1.05%	-1.50%	-6.61%
▲ Argentine Peso	228.9747	0.21%	1.46%	7.11%	29.27%

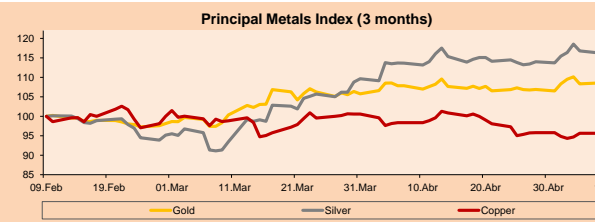
*Legend: Variation 1D: 1 Day; 5D: 5 Days; 1M: 1 Month; YTD: Var.% 12/31/22 to date



Base: 09/02/23=100
Source: Bloomberg

Commodities	Close	1 D*	5 D*	1 M*	YTD*
▼ Oro (US\$ Oz. T) (LME)	2,015.05	-0.74%	-1.72%	0.57%	10.47%
▼ Plata (US\$ Oz. T) (LME)	24.18	-4.80%	-7.17%	-3.50%	0.96%
▼ Cobres (US\$ TM) (LME)	8,436.25	0.00%	-0.45%	-4.69%	0.85%
▼ Zinc (US\$ TM) (LME)	2,609.40	0.00%	-0.20%	-5.81%	-13.11%
▼ Petróleo WTI (US\$ Barril) (NYM)	70.87	-2.33%	3.37%	-13.03%	-11.63%
▼ España (US\$ TM) (LME)	26,164.00	0.00%	1.08%	10.46%	5.69%
▼ Plomo (US\$ TM) (LME)	2,129.70	0.00%	2.00%	1.20%	-8.85%
▼ Azúcar #11 (US\$ Libra) (NYB-ICE)	26.02	-2.40%	1.96%	9.88%	44.72%
▼ Cacao (US\$ TM) (NYB-ICE)	3,003.00	-0.76%	3.41%	3.44%	15.50%
▼ Café Arábica (US\$ TM) (NYB-ICE)	183.00	-1.59%	0.03%	-2.89%	9.84%

*Legend: Variación 1D: 1 Día; 5D: 5 Días; 1M: 1 Mes; YTD: Var.% 31/12/22 a la fecha



Base: 09/02/23=100
Source: Bloomberg

Equity

Germany (Stocks from DAX Index)

Largest gains	Curr.	Price	▲%	Exchange	Largest losses	Curr.	Price	▼%	Exchange
ADS GY	EUR	167.14	2.09	Xetra	ENR GY	EUR	21.66	-2.48	Xetra
PAH3 GY	EUR	52.34	1.99	Xetra	FRE GY	EUR	27.8	-1.49	Xetra
DTE GY	EUR	21.54	1.36	Xetra	DBK GY	EUR	9.588	-1.32	Xetra
BEI GY	EUR	125.9	1.17	Xetra	DPW GY	EUR	41.115	-1.23	Xetra

Europe (Stocks from STOXX EUROPE 600)

Largest gains	Curr.	Price	▲%	Exchange	Largest losses	Curr.	Price	▼%	Exchange
SALM NO	NOK	469.3	6.47	Oslo	NHY NO	NOK	68.12	-9.29	Oslo
DPLM LN	GBP	2940	5.42	Londres	BC8 GY	EUR	39.06	-8.20	Xetra
ALE PW	PLN	35.78	5.33	Warsaw	NDA GY	EUR	75.86	-7.89	Xetra
GMAB DC	DKK	2869	4.98	Copenhagen	BAYN GY	EUR	53.94	-7.46	Xetra

Global Overview:

United States:

The US market closed with mixed performances. The DOW JONES index closed lower, in a context where producer and consumer price data declined more than expected in the month of April. In addition, investors are closely following the issue of the debt ceiling impasse following recent talks between President Biden and congressional Republicans. The S&P 500 index also ended with losses. Where it was pressured by data released by Disney as it reported a decline in its growth. In addition, other regional banks also declined, as news from PacWest renewed concerns about the health of the industry following the recent collapse of three regional banks. Finally, the NASDAQ index ended with positive returns. Being driven by Alphabet Inc, which rose after the presentation of its products with artificial intelligence to face the competition in the sector. Thus, DOW JONES -0.17%, S&P 500 -0.66% and NASDAQ +0.18% ended the day with mixed results.

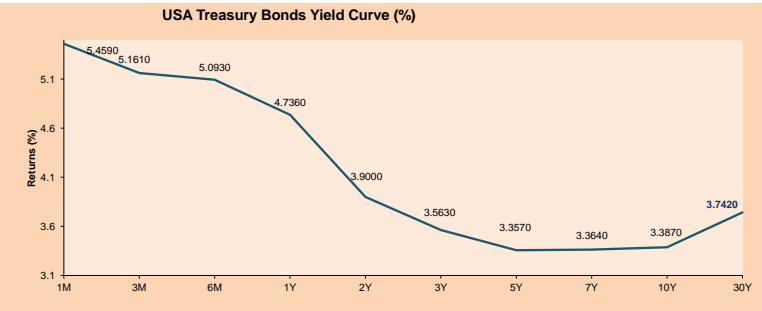
Europe:

Major European indices ended the session with mixed performances. The pan-European STOXX 600 index closed unchanged, as the fall of German Bayer shares and energy stocks erased the previous gains, motivated by hopes of a pause in the Federal Reserve's interest rate hike campaign, in a context of favorable economic data in the United States. The British market, reflected in the FTSE 100, closed with negative results, despite the fact that the Bank of England raised the interest rate by 25 basis points, as expected, and made the largest upward revision to GDP forecasts in the history of its Monetary Policy Committee, stating that the British economy is no longer expected to enter recession. Similarly, reflected in the DAX index, the German market closed in negative territory, due to losses in mining companies. Likewise, VW shares fell by almost 5%, as activists disrupted the automaker's annual shareholder meeting to protest alleged human rights abuses at VW's Xinjiang plant. The French market closed with gains, despite the downward pull caused by Wall Street's loss-making opening. Thus, FTSE 100 -0.14%; CAC 40 +0.28%; DAX -0.39%; STOXX 600 +0.00% ended at mixed levels.

Asia:

Major Asia indices closed with mostly negative returns. The Chinese market ended with negative yields. Chinese 10-year government bond yields fell to 2.7% in May, hitting a new six-month low. This led to high inflation data, worsening deflation and import data. In line, the Hang Seng index closed lower, continuing the trend and having its third consecutive session in the red. Real estate and financial stocks led the decliners, while technology was driven by U.S. expectations. The South Korean market ended with negative results. The Japanese market closed higher, given the results of surveys on services sectors and business trends. The Australian market ended lower on mining losses. Investors also digested data showing that consumer inflation expectations in Australia rose to 5% in May from 4.6% in April, supporting the case for further monetary tightening. Thus, NIKKEI +0.02%; HANG SENG -0.09%; CSI 300 -0.16%; S&P/ASX 200 -0.05%; KOSPI -0.22%; SHANGHAI COMPOSITE -0.29% ended with negative returns.

ETFs	Curr.	Close	1D	5D	30 D	YTD	Exchange
SPDR S&P 500 ETF TRUST	USD	412.13	-0.17%	1.73%	0.59%	7.77%	NYSE Arca
ISHARES MSCI EMERGING MARKET	USD	39.01	-0.36%	0.36%	-1.66%	2.93%	NYSE Arca
ISHARES IBOXX HIGH YLD CORP	USD	74.69	-0.16%	0.44%	-0.32%	1.44%	NYSE Arca
FINANCIAL SELECT SECTOR SPDR	USD	32.03	-0.16%	1.52%	-0.96%	-6.35%	NYSE Arca
VANECK GOLD MINERS ETF	USD	33.52	-4.23%	-6.08%	-3.07%	16.96%	NYSE Arca
ISHARES RUSSELL 2000 ETF	USD	173.07	-0.77%	1.57%	-2.30%	-0.74%	NYSE Arca
SPDR GOLD SHARES	USD	187.13	-0.86%	-1.74%	0.46%	10.31%	NYSE Arca
ISHARES 20+ YEAR TREASURY BO	USD	105.15	1.06%	-0.09%	-1.73%	5.61%	NASDAQ GM
INVESCO QQQ TRUST SERIES 1	USD	326.20	0.33%	3.17%	3.28%	22.50%	NASDAQ GM
ISHARES BIOTECHNOLOGY ETF	USD	130.43	-0.46%	0.10%	-0.21%	-0.66%	NASDAQ GM
ENERGY SELECT SECTOR SPDR	USD	78.40	-1.20%	0.37%	-9.33%	-10.37%	NYSE Arca
PROSHARES ULTRA VIX SIF FLUTR	USD	3.48	-1.63%	-15.74%	-18.63%	-49.27%	Cboe BZX
UNITED STATES OIL FUND LP	USD	63.25	-1.77%	4.20%	-11.00%	-9.78%	NYSE Arca
ISHARES MSCI BRAZIL ETF	USD	29.56	0.72%	6.83%	2.64%	5.68%	NYSE Arca
SPDR S&P OIL & GAS EXP & PR	USD	117.92	-1.17%	1.41%	-12.55%	-13.22%	NYSE Arca
UTILITIES SELECT SECTOR SPDR	USD	68.65	-1.02%	0.09%	-1.55%	-2.62%	NYSE Arca
ISHARES US REAL ESTATE ETF	USD	84.15	-1.09%	0.48%	-1.09%	-0.05%	NYSE Arca
SPDR S&P BIOTECH ETF	USD	86.01	-1.46%	2.42%	11.88%	3.63%	NYSE Arca
ISHARES IBOXX INVESTMENT GRA	USD	108.99	0.39%	0.02%	-0.73%	3.38%	NYSE Arca
ISHARES JIP MORGAN USD EMERGI	USD	85.75	0.32%	0.70%	0.02%	1.37%	NASDAQ GM
REAL ESTATE SELECT SECT SPDR	USD	37.02	-1.04%	0.41%	-1.20%	0.24%	NYSE Arca
ISHARES CHINA LARGE-CAP ETF	USD	28.54	1.06%	0.85%	-2.29%	0.85%	NYSE Arca
CONSUMER STAPLES SPDR	USD	76.82	0.30%	0.48%	1.64%	3.04%	NYSE Arca
VANECK JUNIOR GOLD MINERS	USD	39.53	-4.98%	-5.84%	-5.57%	10.88%	NYSE Arca
SPDR BLOOMBERG HIGH YIELD BO	USD	91.66	-0.14%	0.53%	-0.34%	1.84%	NYSE Arca
VANGUARD REAL ESTATE ETF	USD	82.04	-1.10%	0.50%	-1.30%	-0.53%	NYSE Arca
GRAYSCALE BITCOIN TRUST BTC	USD	14.66	-4.74%	-11.42%	-17.27%	76.84%	OTC US



Source: Bloomberg

Capital Market Laboratory Coordinator: MS Javier Penny Pestana
Collaboration: Nadia Contreras, Nikolas Diaz, José Martínez y Marcello Corsaro
email: pulsoBursatil@ulima.edu.pe

LIMA

Stocks

Ticker	Currency	Price	1D*	5D*	30D*	YTD*	Frequency	Volume (US\$)	Beta	Dividend Yield (%)	Price Earning	Market Cap. (M US\$)	Economic Sector*	Index Weight
▼ ALICORC1 PE**	S/.	6.05	-0.17%	-1.83%	-0.28%	-5.66%	89.47%	2,097	0.65	0.00	9.50	1,406.83	Industrial	3.53%
##### ATACOCB1 PE**	S/.	#N/A	N/A	#VALOR!	#VALOR!	#VALOR!	0.00%	501	-	0.00	-	#VALOR!	Mining	1.02%
- BACKUSH1 PE**	S/.	25.50	0.00%	0.00%	-2.86%	3.74%	84.21%	115,201	0.68	5.53	8.16	8,653.70	Industrial	0.82%
▼ BAP PE**	US\$	141.35	-0.81%	7.72%	9.57%	4.51%	94.74%	598,804	1.38	2.83	-	11,242.00	Diverse	5.82%
▼ BVN PE**	US\$	7.03	-1.13%	-3.30%	-13.42%	-6.14%	100.00%	246,645	1.39	1.99	-	1,937.71	Mining	5.88%
▼ CASAGRC1 PE**	S/.	10.30	-0.96%	0.98%	10.75%	30.38%	100.00%	20,613	-	7.03	9.36	236.86	Agricultural	1.31%
▲ BBVAC1 PE**	S/.	1.67	1.21%	-1.18%	-6.18%	-1.18%	84.21%	21,144	0.26	7.76	6.34	3,365.61	Finance	2.85%
- CORAREH1 PE**	S/.	1.20	0.00%	-1.64%	-6.98%	-14.29%	78.95%	83,675	0.74	0.00	3.89	546.17	Industrial	1.72%
▲ CPACASC1 PE**	S/.	4.04	0.75%	2.28%	6.04%	2.28%	84.21%	4,958	0.37	10.40	9.85	505.98	Industrial	2.38%
▼ CVERDEC1 PE**	US\$	29.00	-1.06%	-1.76%	-4.92%	-2.68%	94.74%	5,512	0.72	4.93	10.21	10,151.62	Mining	5.25%
- ENGEPEC1 PE**	S/.	4.25	0.00%	-1.16%	3.66%	18.06%	94.74%	34,896	0.72	14.94	9.60	2,027.94	Public Services	1.44%
▲ ENDISPC1**	S/.	16.30	0.93%	-1.21%	-6.86%	129.58%	94.74%	1,063,252	0.78	2.13	19.81	2,841.55	Public Services	0.98%
▲ FERREYC1 PE**	S/.	2.13	1.43%	-0.93%	-1.84%	-4.48%	100.00%	21,954	0.43	12.49	4.83	550.13	Diverse	4.90%
- AENZAC1 PE**	S/.	0.57	0.00%	-1.72%	-8.06%	-31.33%	42.11%	795	-	0.00	-	186.26	Diverse	4.05%
▲ IFS PE**	US\$	23.34	1.00%	8.56%	-1.10%	-2.34%	100.00%	683,625	1.11	5.06	6.45	2,694.55	Diverse	7.22%
- INRETC1 PE**	US\$	31.00	0.00%	-4.62%	-8.06%	-6.09%	84.21%	461,440	0.38	4.89	16.36	3,371.15	Diverse	5.28%
- LUSURC1 PE**	S/.	14.50	0.00%	0.00%	0.00%	-4.61%	63.16%	27,816	0.00	7.91	10.70	1,927.60	Public Services	1.81%
▲ MINSUR1 PE**	S/.	3.67	0.55%	-3.42%	-5.90%	3.38%	78.95%	11,001	1.01	10.20	2.09	2,888.51	Mining	3.09%
- PML PE**	US\$	0.11	0.00%	22.22%	22.22%	22.22%	36.84%	1,477	-	0.00	-	27.76	Mining	2.12%
▼ SCCO PE**	US\$	69.83	-4.99%	-7.14%	-9.78%	13.42%	94.74%	510,642	1.46	4.65	19.42	53,985.69	Industrial	2.12%
▲ SIDERC1 PE**	S/.	1.38	1.47%	0.73%	-8.61%	-15.85%	78.95%	28,616	0.24	10.35	4.39	263.72	Mining	2.14%
▲ SIDERC1 PE**	US\$	1.38	1.47%	0.73%	-8.61%	-15.85%	0.00%	104,821	-	0.00	-	-	Industrial	1.43%
▲ UNACEMC1 PE**	S/.	1.68	2.44%	7.69%	5.00%	-6.67%	78.95%	7,609	0.89	5.36	-	833.87	Mining	2.93%
- VOLCABC1 PE**	S/.	0.45	0.00%	2.27%	-13.46%	-11.76%	100.00%	98,078	0.79	0.00	-	966.36	Industrial	3.00%
- BROCALC1 PE**	S/.	5.50	0.00%	0.00%	5.77%	-10.13%	10.53%	91	0.00	0.00	-	240.46	Mining	5.90%
▼ RIMSEGC1 PE**	S/.	0.74	-7.50%	-7.50%	0.00%	5.71%	36.84%	2,938	0.00	5.77	4.46	360.40	Finance	3.09%
- CORAREC1 PE**	US\$	2.00	0.00%	0.00%	-2.44%	4.17%	26.32%	2,134	0.00	0.00	6.48	2,000.61	Mining	2.12%
- ENGIEC1 PE**	S/.	5.46	0.00%	0.92%	-2.50%	10.30%	21.05%	1,844	-	0.00	14.04	896.39	Diversas	2.12%
- GBVLAC1 PE**	S/.	2.80	0.00%	1.82%	-	7.69%	15.79%	4,586	0.00	0.00	26.86	139.19	Diversas	2.14%

Quantity of shares: 28
 Source: Bloomberg, Economatica
 * Bloomberg Industry Classification System
 ** PER is used in the stock market and original currency of the instrument
 *Legend: Variation 1D: 1 Day; 5D: 5 Days, 1M: 1 Month; YTD: Var.% 12/31/21 to date

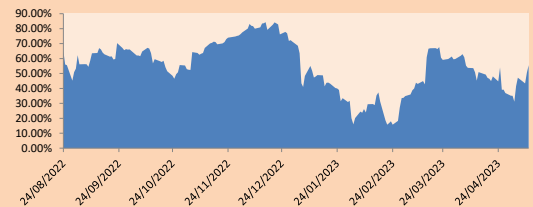
Sectorial Indices

	Close	1D*	5D*	30D*	YTD*	Beta
▼ S&P/BVLMining	411.95	-3.96%	-6.11%	-11.54%	4.73%	1.56
▼ S&P/BVLConsumer	1,194.72	-0.15%	-0.42%	-3.52%	-3.15%	0.34
▲ S&P/BVLIndustrials	235.31	1.12%	1.69%	2.34%	-3.96%	0.15
▼ S&P/BVLFinancials	962.84	-0.88%	5.86%	5.69%	0.81%	1.51
▲ S&P/BVLConstruction	226.11	0.98%	2.95%	1.27%	-6.55%	0.13
▲ S&P/BVLPublicSvcs	1,133.65	0.39%	-0.57%	-1.56%	46.44%	0.43
▲ S&P/BVLElectricUtil	1,106.73	0.39%	-0.57%	-1.56%	46.44%	0.43

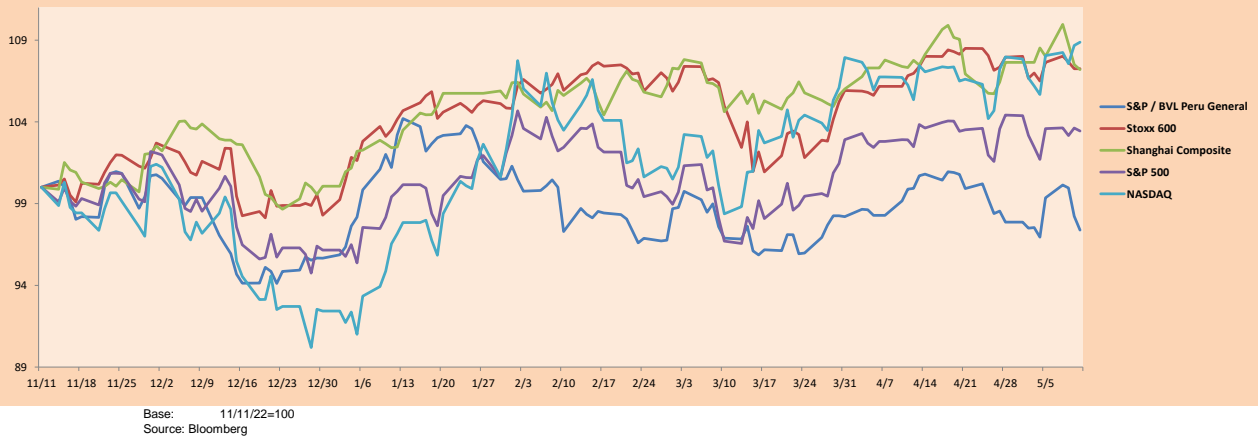
S&P/BVLConstructionTRPEN

*Legend: Variation 1D: 1 Day; 5D: 5 Days, 1M: 1 Month; YTD: Var.% 12/31/21 to date

Correlation Graph of Returns of Mining Index against Metallic Index of London (3 months)



Indices (6 months)



Base: 11/11/22=100
 Source: Bloomberg

Capital Market Laboratory Coordinator: MS Javier Penny Pestana
 Collaboration: Nadia Contreras, Nikolas Díaz, Joseph Martinez y Marcelo Cossar
 email: pulsobursatil@ulima.edu.pe

SOVEREIGN RATING

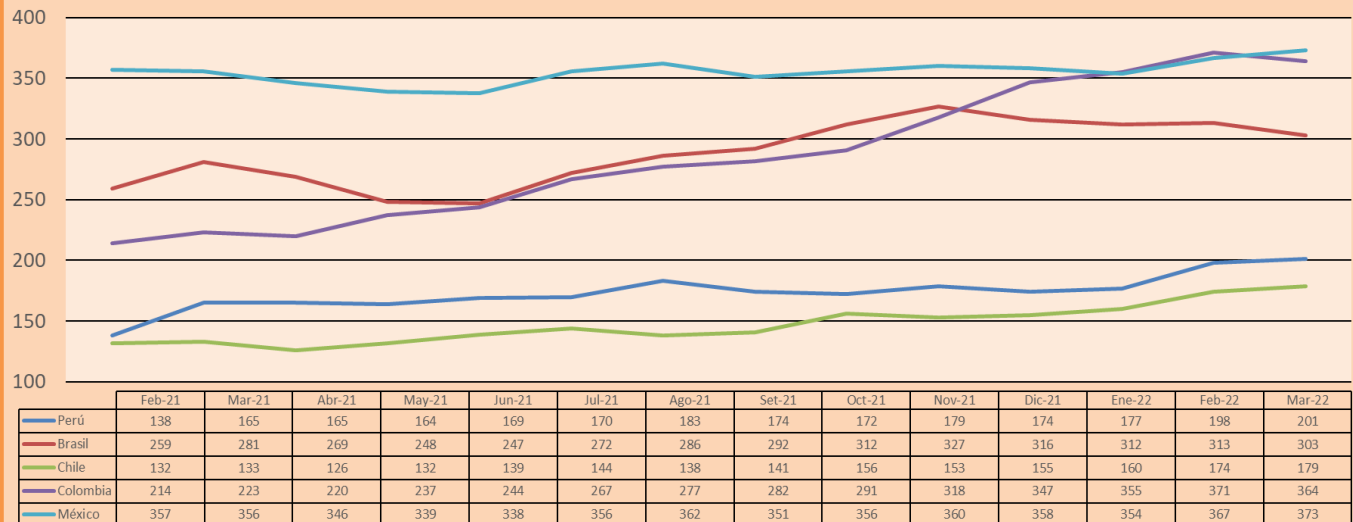
RISK RATINGS			
Moody's	S&P	Fitch	
Aaa	AAA	AAA	Prime
Aa1	AA+	AA+	High credit quality
Aa2	AA	AA	
Aa3	AA-	AA-	
A1	A+	A+	Medium-high grade, with low credit risk
A2	A	A	
A3	A-	A-	
Baa1	BBB+	BBB+	Moderate Credit Risk
Baa2	BBB	BBB	
Baa3	BBB-	BBB-	
Ba1	BB+	BB+	It has speculative elements and it is subject to substantial credit risk
Ba2	BB	BB	
Ba3	BB-	BB-	
B1	B+	B+	It is considered speculative and it has high credit risk
B2	B	B	
B3	B-	B-	
Caa1	CCC+	CCC	Bad credit conditions and it is subject to high credit risk
Caa2	CCC		
Caa3	CCC-		
Ca	CC	DDD	Very close to default or in default
	C		
C	D		

Source: Bloomberg

Latin America Credit Rating			
Clasificadora de riesgo			
Country	Moody's	Fitch	S&P
Peru	Baa1	BBB	BBB
México	Ba2	BB-	BB-
Venezuela	C	WD	NR
Brazil	Ba2	BB-	BB-
Colombia	Baa2	BB+	BB+
Chile	A2	A-	A
Argentine	Ca	WD	CCC-
Panama	Baa2	BBB-	BBB

Source: Bloomberg

LATAM Country Risk(bps)



Source: BCRP

Capital Market Laboratory Coordinator: IMS Javier Penny Pestana
Collaboration: Nadia Contreras, Nikolas Diaz, Joseph Martinez y Marcelo Cossar
email: pulsoBursatil@ulima.edu.pe

The content of this document is just for informational purposes. The information and opinions expressed should not be consider as recommendations for future decisions. Under any circumstances, the Capital Market Laboratory of University of Lima will be responsible for the use of the statements in this document.