

LATAM

Lima, May 15, 2023

Peru: The LSE General index ended today's session with a positive result of +0.42%. The index maintains a negative cumulative annual trend of -3.15% in local currency and a negative cumulative trend of -2.08% in dollar-adjusted currency. The S&P/BVL Peru SEL varied +0.63% while the S&P/BVL LIMA 25 varied +0.09%. The PEN spot reached S/.3.6665. Headline: Peru and the impact of Viva's farewell, while the sector's recovery is postponed.

Chile: The IPSA index ended the day with a positive return of +0.03%. The most benefited sectors of the day were Non Basic Consumer Products (+2.38%) and Materials (+2.03%). The best performing stocks were Sociedad de Inversiones Oro Blanco (+3.44%) and SACI Falabella (+2.57%). Headline: From training to assisted auditing: support measures for SMEs to implement the 40 hours.

Colombia: The COLCAP index ended the session with a negative return of -0.95%. The worst performing sectors of the day were utilities (-2.18%) and Energy (-1.54%). The worst performing stocks were Interconexión Eléctrica SA (-4.05%) and BanColombia SA (-2.89%). Headline: Former ministers and unions ask the Government to withdraw the health reform.

Mexico: The IPC index closed the day in positive territory, +0.57%. The sectors that benefited the most during the day were Communication Services (+1.93%) and Health (+1.71%). The best performing stocks were Industrias Peñoles SAB de CV (+4.80%) and Controladora Vuela Cía de Aviación (+4.16%). Headline: Mexicans "lower" unemployment withdrawals in Afores: fall 13.6% in April.

Brazil: The IBOVESPA index closed the day in positive territory, +0.52%. The sectors that benefited the most during the day were Information Technology (+2.65%) and Non-Basic Consumer Products (+1.49%). The best performing stocks were Ez Tec Empreendimentos e Participações (+4.91%) and Klabin SA (+4.54%). Headline: Companies with financial health will come out ahead to renew concessions, says Alexandre Silveira.

Equity

Largest Gains	Exchange	Curr.	Price	▲ %
INDUSTRIAS PENOL	MEX	MXN	282.14	4.80%
INFRAESTRUCTURA	SAO	BRL	6.62	3.28%
AMERICA MOVIL-L	NYQ	USD	22.81	2.75%
TF ADMINISTRADOR	MEX	MXN	33.47	2.64%
FALABELLA SA	SGO	CLP	1,856.50	2.57%

Source: Refinitiv

Largest Losses	Exchange	Curr.	Price	▼ %
ISA SA	COL	COP	17,530	-4.05%
BANCOLOMBIA-PREF	COL	COP	32,240	-2.89%
GRUPO AVAL COL	COL	COP	555	-2.10%
BANCO CRED INVER	SGO	CLP	24,001	-2.04%
ENEL AMERIK SGO	SGO	CLP	109	-2.00%

Source: Refinitiv

Per Turnover	Exchange	Amount (US\$)
GRUPO F BANORT-O	MEX	60,562.62
WALMART DE MEXIC	MEX	52,741.72
AERO DEL PACIF-B	MEX	42,416.43
AMERICA MOVIL-L	NYQ	42,384.16
CEMEX SAB-CPO	MEX	23,011.43

Source: Refinitiv

Per Volume	Exchange	Volume
ITAU CORPBANCA	SGO	763,205,128.00
ENEL CHILE SA	SGO	324,258,102.00
BANCO SANTANDER	SGO	51,952,725.00
BANCO DE CHILE	SGO	42,316,038.00
CEMEX SAB-CPO	MEX	35,022,798.00

Source: Refinitiv

ETFs

	Curr.	Close	1 D	5 D	1 M	YTD	Exchange
ISHARES MSCI ALL PERU CAPPED	USD	30.70	1.21%	-2.24%	0.31%	4.55%	PCQ
ISHARES MSCI CHILE CAPPED	USD	30.33	-0.03%	3.98%	7.74%	32.04%	BTQ
GLOBAL X MSCI COLOMBIA	USD	19.84	0.92%	0.03%	0.90%	-31.65%	PCQ
ISHARES MSCI MEXICO CAPPED	USD	160.78	1.48%	1.98%	6.26%	26.07%	LSE
ISHARES MSCI EMERGING MARKETS	USD	39.26	1.84%	-0.33%	-0.71%	-19.78%	PCQ
VANGUARD FTSE EMERGING MARKETS	CAD	32.60	1.02%	0.15%	-0.34%	-14.61%	TOR
ISHARES CORE MSCI EMERGING MARKETS	USD	48.70	1.71%	-0.43%	-0.47%	-18.64%	PCQ
ISHARES JP MORGAN EMERGING MARKETS BONDS	USD	84.84	-0.43%	-0.64%	-1.62%	-22.09%	NMQ
MORGAN STANLEY EMERGING MARKETS DOMESTIC	USD	4.75	1.28%	-0.42%	3.94%	-13.00%	NYQ
ISHARES MSCI BRAZIL ETF	USD	30.15	1.17%	4.83%	10.48%	7.18%	PCQ

Source: Refinitiv

Main Indexes

	Close	1 D	5 D	1 M	YTD	Market Cap. (US\$ Mill.)
▲ IPSA (Chile)	5,598.21	0.03%	-0.18%	5.45%	30.74%	124,703
▲ IGPA (Chile)	28,615.31	0.39%	0.90%	4.18%	33.57%	152,379
▲ COLSC (Colombia)	872.39	0.25%	-1.06%	-0.78%	-8.92%	3,489
▼ COLCAP (Colombia)	1,148.13	-0.95%	-0.80%	-2.96%	-18.26%	55,723
▲ S&P/BVL LIMA (Peru)	21,625.72	0.42%	-3.15%	-1.69%	2.87%	102,494
▲ S&P/BVL SEL (Peru)	546.28	0.53%	-2.77%	-4.12%	-2.85%	85,512
▲ S&P/BVL LIMA 25	30,039.74	0.09%	-1.03%	-0.88%	-0.42%	101,942
▲ IPC (México)	55,261.42	0.57%	0.41%	2.56%	3.76%	408,310
▼ S&P MILA 40	485.61	-0.03%	-0.92%	1.32%	9.33%	223,289
▲ IBOVESPA (Brazil)	22,140.04	0.4%	4.6%	10.5%	18.1%	647,748

*Legend: Variation 1D: 1 day; 5D: 5 days; 1M: 1 Month; YTD: Var% to date
Source: Refinitiv, Bloomberg

Currency

	Price	1 D*	5 D*	1 M*	YTD*
▼ Sol (PEN)	3.64	-0.16%	-1.30%	-3.09%	-8.74%
▲ Peso Chileno (CLP)	786.03	0.14%	-99.54%	-99.55%	-99.57%
▼ Peso Colombiano (COP)	4,495.50	-1.31%	-99.92%	-99.92%	-99.91%
▼ Peso Mexicano (MXN)	17.43	-0.84%	-79.54%	-79.85%	-82.40%
▼ Real Brasileiro (BRL)	4.89	-0.59%	-27.36%	-28.13%	-35.31%

*Legend: Variation 1D: 1 day; 5D: 5 days; 1M: 1 Month; YTD: Var% to date
Source: Refinitiv

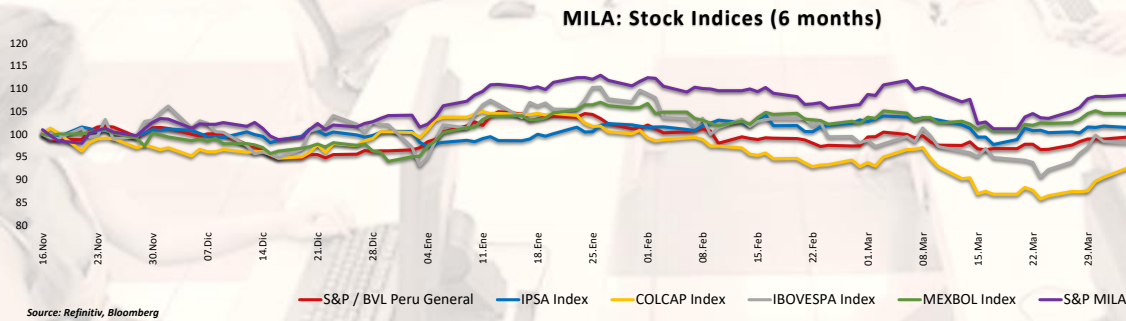
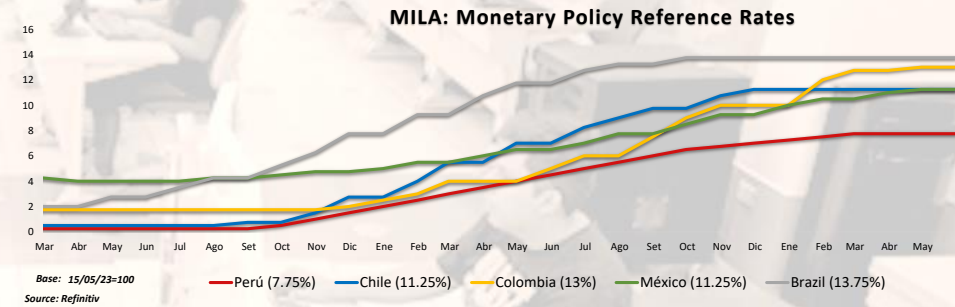
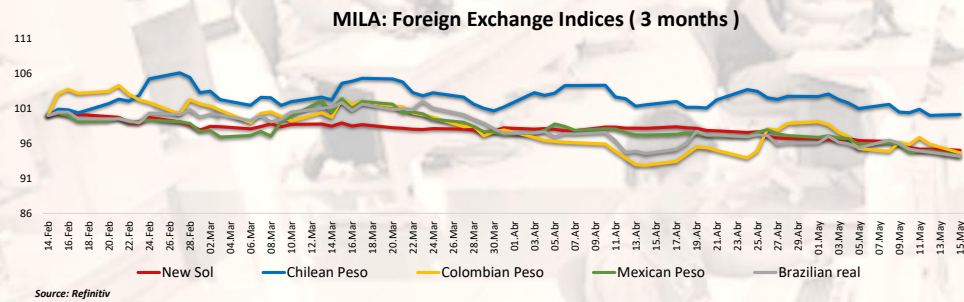
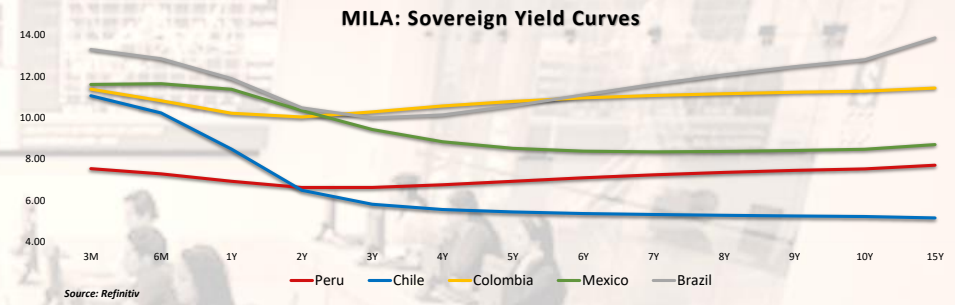
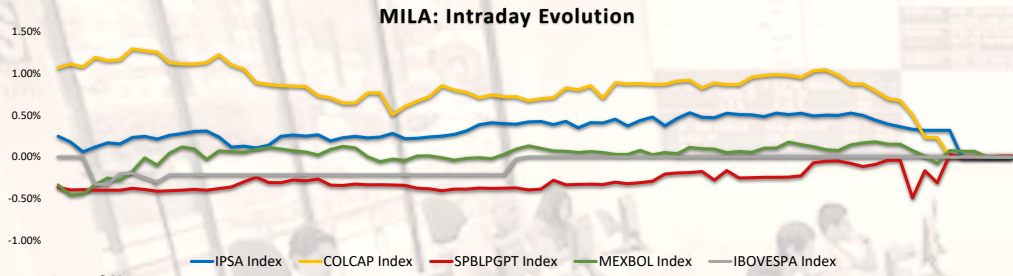
Fixed Income

Instrument	Currency	Price	Bid Yield (%)	Ask Yield (%)	Duration
PERU 7.35 07/21/25	USD	4.78	105.26	454.6%	2.02
PERU 4.125 08/25/27	USD	4.59	98.22	451.8%	3.93
PERU 8.75 11/21/33	USD	5.35	127.32	526.7%	7.27
PERU 6.55 03/14/37	USD	5.43	110.34	537.4%	9.04
PERU 5.625 11/18/2050	USD	5.54	101.18	548.8%	14.02
CHILE 2.45 01/31/31	USD	4.26	88.31	419.3%	6.97
CHILE 3.125 01/21/26	USD	4.28	97.11	422.6%	2.57
CHILE 3.625 10/30/42	USD	5.28	80.03	523.0%	13.38
COLOM 11.85 03/09/28	USD	7.82	115.88	774.8%	3.82
COLOM 10.375 01/28/33	USD	8.45	112.53	803.5%	6.40
COLOM 7.375 09/18/37	USD	8.24	92.77	811.6%	8.78
COLOM 6.125 01/18/41	USD	8.54	78.16	828.1%	9.91
MEX 4 10/02/23	MXV	4.50	88.65	450.0%	7.59
MEX5.55 01/45	USD	6.11	93.34	605.8%	12.33

Source: Refinitiv

Capital Market Laboratory Coordinator: MS Javier Penny Pestana
Collaboration: Nadia Contreras, Nikolas Díaz, Joseph Martinez y Marcelo Cossar
email: pulsohorsatil@ulima.edu.pe

The content of this document is just for informational purposes. The information and opinions expressed should not be consider as recommendations for future decisions. Under any circumstances, the Capital Market Laboratory of University of Lima will be responsible for the use of the statements in this document.



Capital Market Laboratory Coordinator: MS Javier Penny Pestana
Collaboration: Nadia Contreras, Níkolás Díaz, Joseph Martínez y Marcelo Cossar
email: pulsobursatil@ulima.edu.pe

WORLD

United States:

The US market closed with positive performances. The DOW JONES closed the day with gains, where the New York Fed's "Empire State" index, which is a gauge of manufacturing sector activity, fell to -31.8 versus expectations of -3.75. These have increased concerns about a slowdown in the U.S. economy. The S&P 500 index also ended with rising yields, in a context where investors are hoping to reach an agreement on the debt ceiling level after successful negotiations over the weekend. In addition, Atlanta Fed President Raphael Bostic and Chicago Fed economist Austan Goolsbee signaled their preference for pausing interest rate hikes. Finally, the NASDAQ index ended the day higher. Following a rally in tech company returns, led by Meta's 2.1% rise on its strong earnings outlook. On the other hand, European Union regulators approved Microsoft's \$69 billion acquisition of Activision Blizzard. Thus, DOW JONES +0.14%, S&P 500 +0.30% and NASDAQ +0.65% ended the day with positive results.

Europe:

Major European indices ended the session with positive returns. The pan-European STOXX 600 index closed higher, where growth estimates were revised and the European Union is expected to grow by 1% in 2023, up from the previous revision of 0.8%. The UK market, reflected in the FTSE 100 closed with a +0.30% return, driven by gains in mining stocks, recovering from three consecutive weeks of losses. However, John Wood Group plunged 34.4%, its worst day on record, after U.S. private equity firm Apollo Global Management said it does not intend to submit a takeover bid for the oil services provider. Similarly, the German market, reflected in the DAX index closed in positive territory. Mining stocks led the gains with a rise of 1.2%, while the chemical, media and retail sectors recorded losses of around 0.2% each. BBVA, a Spanish bank heavily exposed to Turkey, fell more than 4% as Turkey prepares for a runoff following Sunday's elections. The French market closed positive, recovering from Friday's losses. On the corporate front, financial stocks outperformed others in Europe, with Axa up 2.5% after the insurance provider reported better-than-expected corporate results and promised ambitious results for the year. Thus, FTSE 100 +0.30%; CAC 40 +0.05%; DAX +0.02%; STOXX 600 +0.25% ended at positive levels.

Asia:

The main Asian indices closed with positive performances, in an optimistic context for the technology sector and solid earnings of Asian companies. The Chinese market ended in positive territory, driven by investors and their hopes for policy easing and capital market stimulus measures. In addition, A-shares, insurance and the new energy sector rose 4.7% and 3.5% to lead gains. On the other hand, the Hang Seng index closed with gains, boosted by Tencent Holdings ahead of its first quarter earnings. In addition, investors are expecting positive results from Alibaba. The South Korean market ended higher, reversing early losses to close higher on Monday, snapping a four-session losing streak, although global trading sentiment faltered due to uncertainties over the U.S. debt ceiling negotiations. The Japanese market closed in positive territory, after Goldman Sachs Group Inc. said strong fundamentals and expectations of structural changes "justify a bullish stance" on the country's stocks. Also, companies are posting solid earnings, valuations are cheap and long-term investors are positioned in the market. The Australian market ended with gains as mining and gold stocks offset losses in financial and technology stocks. Newcrest Mining also rose 1.5% after the gold miner said it recommended its shareholders vote in favor of Newmont Corp.'s bid. Thus, NIKKEI +0.81%; HANG SENG +1.75%; CSI 300 +1.55%; S&P/ASX 200 +0.14%; KOSPI +0.16%; SHANGHAI COMPOSITE +1.17% ended with positive returns.

ETFs

	Curr.	Close	1 D	5 D	1 M	YTD	Exchange
SPDR S&P 500 ETF TRUST	USD	413.01	0.35%	0.04%	100.13%	6.00%	PCQ
ISHARES MSCI EMERGING MARKETS ETF	USD	39.26	1.84%	0.28%	-1.16%	-4.57%	PCQ
ISHARES IBOXX \$ HIGH YIELD CORPORATE BOND ETF	USD	74.40	-0.03%	-0.55%	-1.17%	-2.69%	PCQ
FINANCIAL SELECT SECTOR SPDR FUND	USD	32.16	0.82%	0.25%	-2.19%	-2.31%	PCQ
VANECK GOLD MINERS ETF	USD	33.91	0.92%	-3.11%	-3.36%	5.77%	PCQ
ISHARES RUSSELL 2000 ETF	USD	174.83	1.22%	0.24%	-0.95%	-0.71%	PCQ
SPDR GOLD SHARES	USD	187.21	0.21%	-0.82%	0.46%	8.82%	PCQ
ISHARES 20+ YEAR TREASURY BOND ETF	USD	103.19	-1.04%	-0.83%	-1.80%	-12.93%	NMQ
INVESCO QQQ TRUST SERIES 1	USD	326.79	0.54%	0.51%	2.58%	13.20%	NMQ
ISHARES BIOTECHNOLOGY ETF	USD	131.74	1.20%	0.54%	-0.52%	13.95%	NMQ
ENERGY SELECT SECTOR SPDR FUND	USD	78.92	0.51%	-0.54%	-9.53%	-3.49%	PCQ
PROSHARES ULTRA VIX ST FUTURES ETF	USD	3.35	-3.74%	-5.37%	-15.83%	-79.08%	BTQ
UNITED STATES OIL ETF	USD	62.99	1.48%	-2.17%	-12.62%	-22.85%	PCQ
ISHARES MSCI BRAZIL ETF	USD	30.15	1.17%	2.73%	2.69%	-10.32%	PCQ
SPDR S&P OIL & GAS EXP & PRODUCTION ETF	USD	121.27	1.89%	1.64%	-9.78%	-11.34%	PCQ
UTILITIES SELECT SECTOR SPDR FUND	USD	68.16	-1.26%	-1.73%	-1.06%	-4.99%	PCQ
ISHARES US REAL ESTATE ETF	USD	84.03	-0.17%	-1.23%	1.17%	-11.44%	PCQ
SPDR S&P BIOTECH ETF	USD	87.55	2.48%	0.31%	11.97%	24.48%	PCQ
ISHARES IBOXX \$ INVESTMENT GRADE CORP BOND ETF	USD	107.74	-0.54%	-0.76%	-1.51%	-4.16%	PCQ
ISHARES JP MORGAN USD EMERGING MARKETS BOND ETF	USD	84.84	-0.43%	-0.75%	-1.22%	-5.34%	NMQ
REAL ESTATE SELECT SECT SPDR FUND	USD	37.02	-0.19%	-1.04%	1.15%	-12.59%	PCQ
ISHARES CHINA LARGE-CAP ETF	USD	29.04	4.50%	2.83%	1.15%	-4.54%	PCQ
CONSUMER STAPLES SPDR FUND	USD	76.93	-0.25%	0.44%	2.33%	PCQ	
VANECK JUNIOR GOLD MINERS ETF	USD	40.31	0.85%	-3.10%	-4.91%	3.12%	PCQ
SPDR BLOOMBERG HIGH YIELD BOND ETF	USD	91.34	0.02%	-0.49%	-1.13%	-3.55%	PCQ
VANGUARD REAL ESTATE INDEX FUND ETF	USD	81.89	-0.17%	-1.28%	0.86%	-13.85%	PCQ
DIREXION DAILY GOLD MINERS INDEX BULL 2X SHARES	USD	45.25	1.98%	-6.22%	-7.62%	-5.89%	PCQ
PROSHARES ULTRASHORT 20+ YEAR TREASURY	USD	29.43	2.26%	1.73%	3.01%	18.05%	PCQ
ISHARES MSCI EAFE ETF	USD	73.70	0.77%	0.34%	0.66%	8.75%	PCQ
ISHARES PREFERRED AND INCOME SECURITIES ETF	USD	29.71	-0.20%	-0.60%	-5.26%	-9.86%	NMQ
WISDOMTREE JAPAN HEDGED EQUITY ETF	USD	75.18	1.14%	2.26%	5.04%	18.67%	PCQ
GRAYSCALE BITCOIN TRUST (BTC)	USD	15.00	5.19%	-2.53%	-13.94%	-19.96%	PNK

Source: Refinitiv

Main Indexes

	Close	1 D	5 D	1 M	YTD	Market Cap. (US\$ Mill.)
▼ Dow Jones (EUAU)	52.26	-0.10%	-3.49%	-5.55%	-6.46%	196,674
▲ Standard & Poor's 500 (EUAU)	4,136.28	0.30%	-0.04%	0.29%	-13.67%	35,886
▲ NASDAQ Composite (EUAU)	12,365.21	0.66%	0.88%	1.44%	-22.09%	20,667
▲ Stoxx EUROPE 600 (Europa)	466.67	0.25%	-0.06%	1.96%	-3.88%	397,851,053
▲ DAX (Alemania)	28.80	0.40%	-1.39%	1.12%	-8.52%	112
▲ FTSE 100 (Reino Unido)	7,777.70	0.30%	-0.01%	1.36%	5.50%	401
▲ CAC 40 (Francia)	7,418.21	0.05%	-0.31%	0.98%	3.89%	2,451,577
▼ IBEX 35 (España)	9,201.50	-0.35%	-0.11%	0.48%	6.72%	697,886
▲ MSCI JAC Asia Pacific Index	514.24	0.78%	-1.44%	-1.96%	-17.61%	21,650
▲ HANG SENG (Hong Kong)	19,971.13	1.75%	-1.61%	-2.15%	-14.01%	22,363
▲ SHANGHAI SE Comp. (China)	3,310.74	1.17%	-2.48%	0.44%	-8.44%	62,098,225
▲ NIKKEI 225 (Japón)	29,626.34	0.81%	2.34%	5.10%	3.31%	529,965
▲ S&P / ASX 200 (Australia)	7,267.10	0.14%	-0.13%	0.61%	-2.06%	27,626
▲ KOSPI (Corea del Sur)	2,479.35	0.16%	-1.35%	0.28%	-17.34%	5,182,337

*Legend: Variation 1D: 1 day; 5D: 5 days; 1M: 1 Month; YTD: Var% to date

Source: Refinitiv, Bloomberg

Equity

United States (Stocks from SPX Index)

Largest Gains	Curr.	Price	▲%	Exchange	Largest Losses	Curr.	Price	▼%	Exchange
WESTERN DGTL C/d	USD	36.75	11.26%	NSQ	ONEOK INC/d	USD	57.95	-9.06%	NYQ
COMERICA INC/d	USD	34.3	7.29%	NYQ	PORWALAU-X/d	INR	28.45	-4.85%	BSE
KEYCORP NEW/d	USD	9.59	6.67%	NYQ	FIRST SOLAR/d	USD	221.59	-4.36%	NSQ
DISH NETWORK A/d	USD	6.57	6.66%	NSQ	TRACTOR SUPPLY/d	USD	231.53	-3.50%	NSQ
MICRON TECH/d	USD	64.64	6.11%	NSQ	AMEREN CORP/d	USD	85.06	-3.03%	NYQ

Source: Refinitiv

Europe (Stocks from STOXX EUROPE 600)

Largest Gains	Curr.	Price	▲%	Exchange	Largest Losses	Curr.	Price	▼%	Exchange
CSAI INC A ORD/d	USD	23.97	23.43%	NYQ	GREEN RS FDS O/d	CAD	(en blanco)	-100.00%	CVE
PLAYAGS INC OR/d	USD	6.14	15.85%	NYQ	LUMINEX RESOUR/d	CAD	(en blanco)	-100.00%	CVE
BLEND LABS A O/d	USD	1.11	15.30%	NYQ	BARSELE MINERA/d	CAD	(en blanco)	-100.00%	CVE
SAMHALLSBYGG/d	SEK	6.724	10.59%	STO	MANILLA BULLETI/d	PHP	(en blanco)	-100.00%	PHS
HEICO CORP/d	USD	178.9	7.80%	NYQ	AKZO NOBEL/d	EUR	(en blanco)	-100.00%	CHI

Source: Refinitiv

Currency

	Price	1 D*	5 D*	1 M*	YTD*
▲ Euro	1.0872	0.00%	-0.98%	-1.16%	2.95%
▲ Yen	136.11	0.29%	1.32%	1.75%	6.46%
▲ Yuan	6.9575	0.00%	0.37%	1.29%	3.97%
▼ Won Coreano	1335.36	-0.53%	1.34%	2.40%	4.85%
▼ Libra Esterlina	1.2527	0.56%	-0.77%	0.92%	0.32%
▼ Dólar de Hong Kong	7.8385	-0.05%	0.09%	-0.13%	-0.11%
▲ Dólar Australiano	0.6698	0.78%	-1.18%	-0.15%	-4.76%

*Legend: Variation 1D: 1 day; 5D: 5 days; 1M: 1 Month; YTD: Var% to date

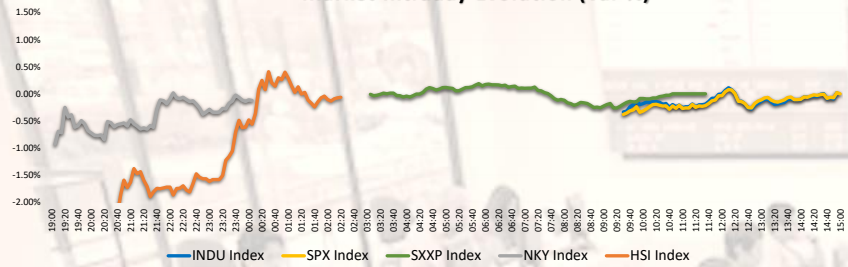
Commodities

	Price	1 D*	5 D*	1 M*	YTD*
Oro (US\$ Oz. T) (LME)	8222.75	0.00%	-3.94%	-7.79%	-14.30%
Plata (US\$ Oz. T) (LME)	2532.98	0.00%	-5.46%	-13.36%	-28.76%
Cobre (US\$ TM) (LME)	71.11	1.53%	-2.80%	-11.60%	5.52%
Zinc (US\$ TM) (LME)	25104	0.00%	-4.83%	-3.82%	-37.08%
Petroleo WTI (US\$ Barril) (NYM)	2067.75	0.00%	-1.84%	-2.40%	-10.44%
Etaño (US\$ TM) (LME)	26.29	0.27%	0.77%	19.66%	55.56%
Plomo (US\$ TM) (LME)	26.29	0.27%	0.77%	19.66%	55.56%
Asúcar #11 (US\$ Libra) (NYB-ICE)	2980	-0.20%	0.88%	5.11%	19.44%
Cacao (US\$ TM) (NYB-ICE)	0	0.00%	0.00%	0.00%	0.00%
Café Arábica (US\$ TM) (NYB-ICE)	0	0.00%	0.00%	0.00%	0.00%

*Legend: Variation 1D: 1 day; 5D: 5 days; 1M: 1 Month; YTD: Var% to date

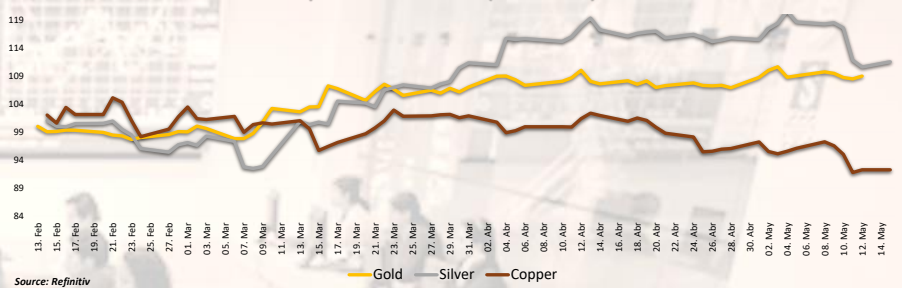
Capital Market Laboratory Coordinator: MS Javier Penny Pestana
Collaboration: Nadia Contreras, Nikolas Díaz, Joseph Martínez y Marcelo Cossar
email: pulsobursatil@ulima.edu.pe

Market Intraday Evolution (var %)



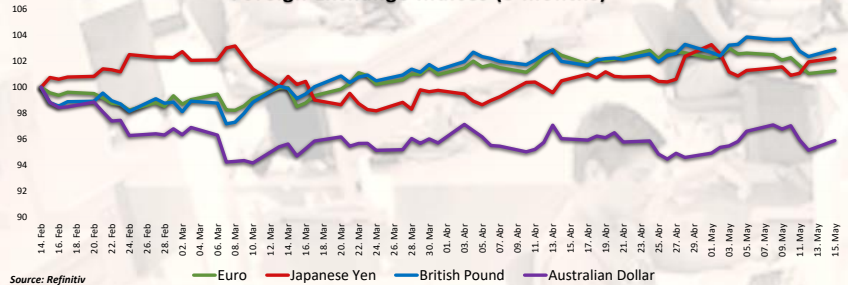
Source: Refinitiv, Bloomberg

Principal Metals Index (3 months)



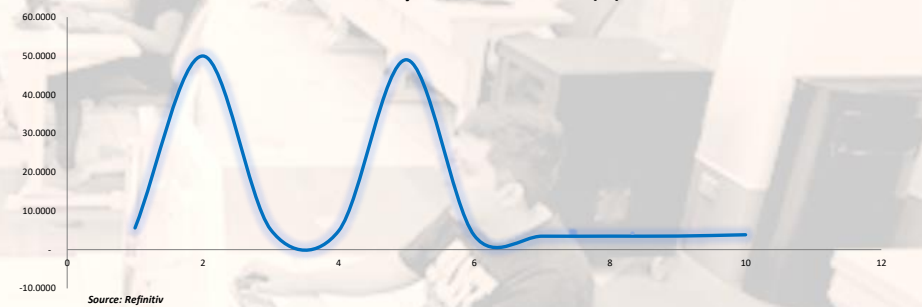
Source: Refinitiv

Foreign Exchange Indices (3 months)



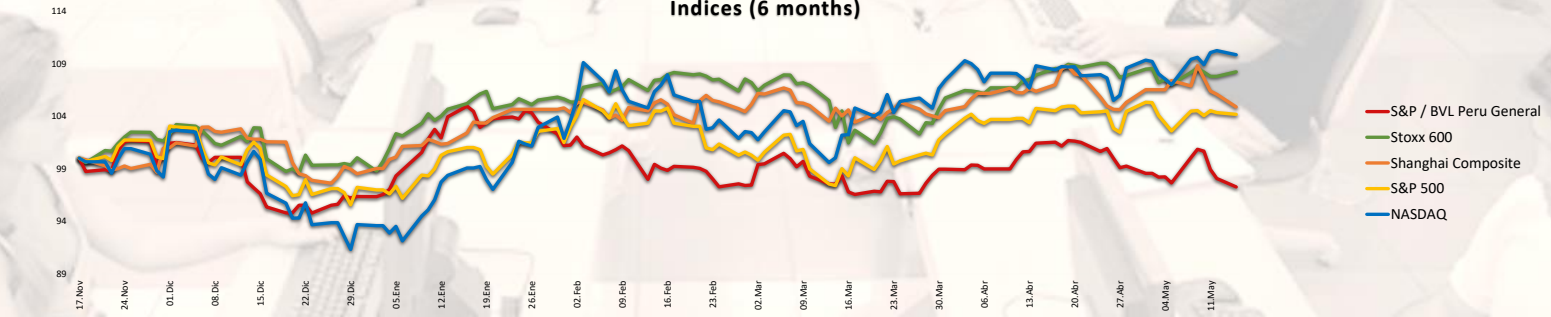
Source: Refinitiv

USA Treasury Bonds Yield Curve (%)



Source: Refinitiv

Indices (6 months)



Base: 15/05/23=100

Source: Refinitiv, Bloomberg

Capital Market Laboratory Coordinator: MS Javier Penny Pestana
Collaboration: Nadia Contreras, Nikolas Díaz, Joseph Martinez y Marcelo Cossar
email: pulsobursatil@ulima.edu.pe

RANKING STOCKS LIMA

Ticket	Currency	Price	1 D*	5 D*	1 M*	YTD*	Frequency	Volume	Beta	Dividend Yield (%)	Price Earning	Capitalización		Sector	Index Weight
												Bursátil	(M US\$)		
AUCORCLIM	S/.	6.10	0.00%	2.01%	-0.69%	-5.69%	0.00%	0	0.62	4.56	8.55	31,417	Industrial	18.06%	
BACKUSILIM	S/.	25.50	0.00%	0.00%	3.48%	9.46%	90.00%	0	0.41	6.41	94.56	54,724	Industriales	9.09%	
BAP	US\$	137.13	0.12%	-6.79%	4.42%	1.08%	90.00%	458,963	0.95	4.93	7.33	62,821,983	Diversas	8.13%	
BVN	S/.	1.65	0.00%	-1.20%	12.01%	13.93%	85.00%	0	0.70	7.85	0.00	49,720	Bancos y Financieras	29.52%	
CASAGRCLIM	S/.	1.65	0.00%	-1.20%	12.01%	13.93%	85.00%	0	0.70	7.85	0.00	49,720	Bancos y Financieras	29.52%	
BBVACLIM	S/.	1.65	0.00%	-1.20%	12.01%	13.93%	85.00%	0	0.70	7.85	0.00	49,720	Bancos y Financieras	29.52%	
CORAREILIM	S/.	1.20	0.00%	0.00%	-4.30%	-13.87%	80.00%	0	1.06	4.42	0.00	12,927	Industriales	-19.11%	
CPAC K	US\$	5.36	-0.74%	-1.29%	0.16%	3.84%	90.00%	3,824	0.50	10.47	18.48	20,651	Industriales	-1.04%	
CVENDECLIM	US\$	29.10	0.00%	-1.36%	-0.75%	-0.08%	85.00%	0	1.14	2.45	10.14	1,019	Mineras	-14.90%	
ENGEPECLIM	S/.	4.20	1.20%	1.31%	16.82%	22.01%	90.00%	0	0.76	9.31	10.74	10,068	Servicios Públicos	69.34%	
ENDISPECLIM	US\$	29.10	0.00%	-1.36%	-0.75%	-0.08%	85.00%	0	1.14	2.45	10.14	1,019	Mineras	-14.90%	
FERREYCLIM	S/.	2.11	0.00%	-1.86%	4.57%	-0.52%	90.00%	0	0.99	11.30	0.00	39,818	Diversas	5.09%	
AENZACLIM	S/.	0.57	0.00%	-5.00%	-13.64%	-31.33%	65.00%	0	0.73	0.00	0.00	75	Diversas	-53.76%	
IFS	US\$	22.75	-0.70%	0.00%	-2.40%	-3.19%	90.00%	35,163	1.05	5.15	5.49	799,852	Diversas	-9.07%	
INRETCCLIM	US\$	32.10	2.23%	3.55%	-1.08%	-0.22%	80.00%	0	0.75	2.64	12.64	17,655	Diversas	-9.04%	
LUSURCLIM	S/.	14.62	0.83%	0.83%	0.83%	-2.86%	85.00%	0	0.57	2.41	0.00	53,141	Servicios Públicos	-8.34%	
MINSURILIM	S/.	3.67	0.00%	0.55%	-3.42%	3.38%	90.00%	0	1.10	10.26	19.72	28,503	Mineras	-26.93%	
SCCO K	US\$	72.30	4.04%	-8.42%	-6.40%	19.72%	90.00%	1,210,750	1.25	5.76	17.24	86,927,238	Mineras	21.06%	
SIDERCLIM	S/.	1.33	-3.62%	0.00%	-12.03%	-17.39%	85.00%	0	0.90	40.16	0.00	6,930	Industriales	-5.75%	
UNOEMCLIM	S/.	2.80	0.00%	1.82%	8.74%	9.58%	10.00%	0	0.02	3.45	0.00	396	Diversas	10.95%	
VOICABCLIM	S/.	2.80	0.00%	1.82%	8.74%	9.58%	10.00%	0	0.02	3.45	0.00	396	Diversas	10.95%	
BROCALCLIM	S/.	1.65	0.00%	-1.20%	12.01%	13.93%	85.00%	0	0.70	7.85	0.00	49,720	Bancos y Financieras	29.52%	
CORARECLIM	S/.	1.65	0.00%	-1.20%	12.01%	13.93%	85.00%	0	0.70	7.85	0.00	49,720	Bancos y Financieras	29.52%	
ENGEICLIM	S/.	16.80	1.82%	1.82%	24.66%	137.90%	90.00%	0	0.86	1.82	0.00	201,149	Servicios Públicos	325.68%	
GBVACLIM	S/.	0.57	0.00%	-5.00%	-13.64%	-31.33%	65.00%	0	0.73	0.00	0.00	75	Diversas	-53.76%	

Quantity of Shares: 25
Source: Refinitiv

Up
Down
Hold

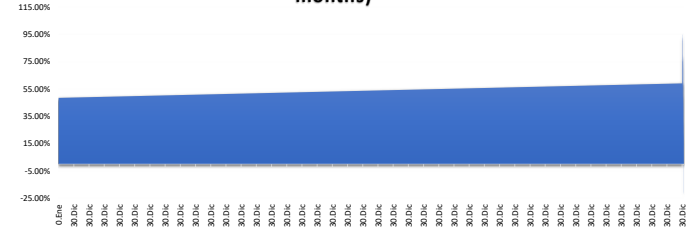
** PER is used in the stock market and original currency of the instrument
*Legend: Variation 1D: 1 day; 5D: 5 days; 1M: 1 Month; YTD: Var% to date

Sectorial Indices

	Close	1 D*	5 D*	1 M*	YTD*	Beta
S&P/BVL Consumer Index	1,215.51	0.86%	1.67%	-1.48%	-1.46%	0.32
S&P/BVL Industrial Index	233.72	-0.38%	-0.35%	1.63%	-5.32%	0.33
S&P/BVL Financials Index	933.61	-0.24%	-7.20%	2.20%	-2.33%	1.39
S&P/BVL Construction Index	224.85	-0.56%	0.37%	1.35%	-7.51%	0.29
S&P/BVL Public Services Index	1,152.45	1.11%	1.41%	0.87%	48.86%	0.27
S&P/BVL Mining Index	420.52	2.55%	-6.84%	-9.86%	6.45%	1.57
S&P/BVL Electric Utilities Index	1,125.08	1.11%	1.41%	0.87%	48.87%	0.27

*Legend: Variation 1D: 1 day; 5D: 5 days; 1M: 1 Month; YTD: Var% to date
Source: Refinitiv

Correlation Yield. Mining Index vs. London Metal Index (3 months)



Source: Refinitiv

Latin America Credit Rating

RISK RATINGS

Country	Moody/s	Fitch	S&P
Peru	A	BBB	BBB
Mexico	Baa2	BBB-	BBB
Venezuela	WR	WD	NR
Brazil	BBB	BB-	BB-
Colombia	BB+	BB+	BB+
Chile	AA-	A-	A
Argentina	CCC	WD	CCC-
Panama	WR	BBB-	BBB

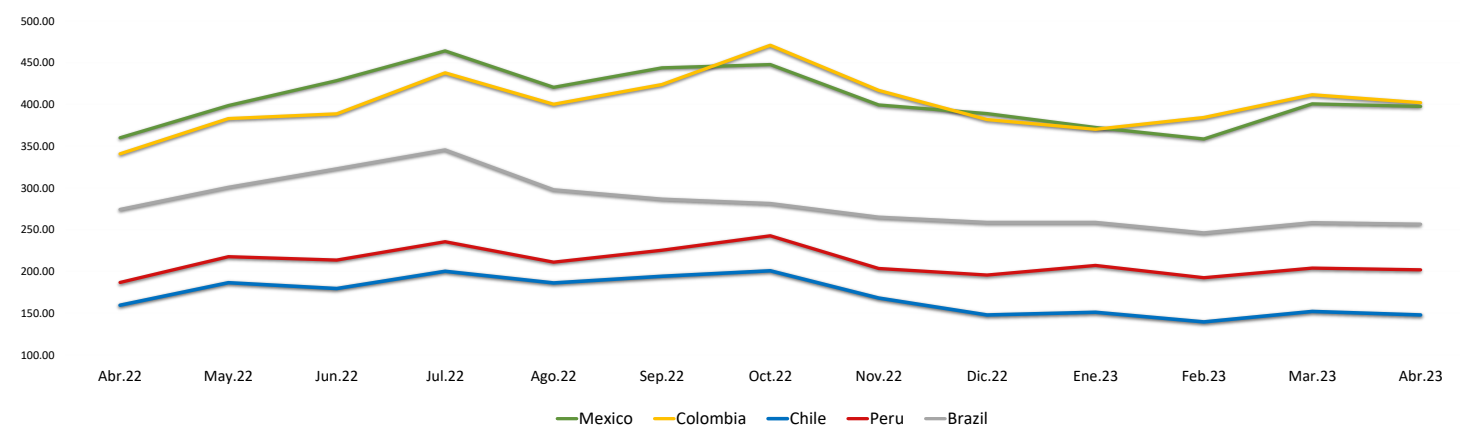
Source: Refinitiv, Bloomberg

Legend

	Moody/s	Fitch	S&P
Prime	Aaa	Aaa	Aaa
High Grade	Aa1	Aa+	Aa+
	Aa2	Aa	Aa
	Aa3	Aa-	Aa-
High Grade Medium	A1	A+	A+
	A2	A	A
	A3	A-	A-
Low Grade Medium	Baa1	BBB+	BBB+
	Baa2	BBB	BBB
	Baa3	BBB-	BBB-
Non-Investment Grade Speculative	Ba1	BB+	BB+
	Ba2	BB	BB
	Ba3	BB-	BB-
Highly Speculative	B1	B+	B+
	B2	B	B
	B3	B-	B-
Substantial Risk	Caa1	CCC+	CCC+
	Caa2	CCC	CCC
	Caa3	CCC-	CCC-
Extremely Speculative	Ca	CC	CC
		C	
Low Expectation of Payment		RD	SD
Default	C	DDD	D
		DD	
Unclassified		D	
	WR		NR

Source: Refinitiv, Bloomberg

LATAM Country Risk (bps)



	Abr.22	May.22	Jun.22	Jul.22	Ago.22	Sep.22	Oct.22	Nov.22	Dic.22	Ene.23	Feb.23	Mar.23	Abr.23
Peru	186.67	217.55	213.55	235.43	211.00	225.27	242.59	203.41	195.50	207.05	192.30	203.83	201.90
Brazil	274.06	300.64	322.82	345.48	297.70	286.56	281.30	264.90	258.64	258.64	246.10	258.35	256.55
Chile	159.44	186.32	179.32	200.10	186.09	194.05	200.69	167.97	147.82	150.95	139.45	152.00	147.75
Colombia	340.78	383.05	388.73	437.86	400.26	423.83	470.84	416.81	381.77	370.18	384.35	411.61	402.15
Mexico	360.00	398.59	428.41	464.10	420.43	443.77	447.72	399.31	389.00	372.32	358.55	400.70	397.60

Source: BCRP