

## LATAM

Lima, May 16, 2023

Peru: The BVL General index ended today's session with a positive result of +0.46%. The index maintains a cumulative annual trend of 1.85% in local currency and a cumulative trend of 4.91% in dollar-adjusted currency. Regarding the S&P/BVL Peru SEL, it varied -0.38% while the S&P/BVL LIMA 25 varied +0.20%. The spot PEN reached S/.3.6953. Headline: Construction and industry are the sectors that most detract from growth.

Chile: The IPSA index ended the day with a positive return of +0.37%. The most benefited sectors of the day were Non Basic Consumer Products (+1.67%) and Materials (+1.50%). The best performing stocks were Engie Energía Chile SA (+5.11%) and Sociedad de inversiones Oro BI (+2.71%). Headline: CLP leads Latam currencies losses on copper drop: Andes FX.

Colombia: The COLCAP index ended the session with a negative return of -0.91%. The sectors that lost the most during the day were Finance (-1.16%) and Materials (-1.07%). The worst performing stocks were Banco Davivienda SA (-2.56%) and Cementos Argos (-2.54%). Headline: Colombia will propose savings fund in pension reform: Bonilla.

Mexico: The IPC index closed the day in positive territory at -0.15%. The worst performing sectors of the day were Financials (-1.45%) and Non-Basic Consumer Products (-0.59%). The worst performing stocks were Grupo Financiero Banorte SAB (-2.53%) and Industrias Peñoles SAB de CV (-1.34%). Headline: Mexico's international reserves fell to US\$ 203.5 billion, says Banxico.

Brazil: The IBOVESPA index closed the day in negative territory at -0.77%. The worst performing sectors of the day were Non-Basic Consumer Products (-4.97%) and Materials (-1.67%). The worst performing stocks were 3R PETROLEUM OLEO E GAS SA (-7.53%) and Cia. de Saneamento Básico do E (-2.77%). Headline: Petrobras eases fears of intervention in fuel prices in new policy.

### Equity

Largest Gains	Exchange	Curr.	Price	▲%
ENGIE ENERGIA CH	SGO	CLP	699.00	5.11%
GRUPO AEROPORTUA	MEX	MXN	198.96	2.82%
FALABELLA SA	SGO	CLP	1,890.00	1.80%
ENEL AMERICAS SA	SGO	CLP	111.00	1.69%
ENEL CHILE SA	SGO	CLP	47.90	1.38%

Source: Refinitiv

Largest Losses	Exchange	Curr.	Price	▼%
AES GENER S/SGO	SGO	CLP	114	-5.00%
CEMENTOS ARGOS	COL	COP	2,992	-2.54%
GRUPO F BAN MEX	MEX	MXN	149	-2.53%
BANCO CRED INVER	SGO	CLP	23,500	-2.09%
VOLCAN CIA LIMA	LMA	PEN	0	-2.05%

Source: Refinitiv

Per Turnover	Exchange	Amount (US\$)
AMERICA MOVIL-L	NYQ	62,658.71
GRUPO F BANORT-O	MEX	51,435.58
WALMART DE MEXIC	MEX	43,954.49
CENCOSUD SA	SGO	29,276.91
CEMEX SAB-CPO	MEX	19,979.74

Source: Refinitiv

Per Volume	Exchange	Volume
ITAU CORPBANCA	SGO	406,886,875.00
ENEL CHILE SA	SGO	176,968,574.00
BANCO SANTANDER	SGO	158,243,997.00
BANCO DE CHILE	SGO	56,108,507.00
CEMEX SAB-CPO	MEX	30,309,417.00

Source: Refinitiv

### ETFs

	Curr.	Close	1 D	5 D	1 M	YTD	Exchange
ISHARES MSCI ALL PERU CAPPED	USD	30.56	-0.44%	-0.42%	-3.57%	2.65%	PCQ
ISHARES MSCI CHILE CAPPED	USD	29.76	-1.88%	-1.26%	1.74%	6.06%	BTQ
GLOBAL X MSCI COLOMBIA	USD	19.48	-1.84%	-0.45%	-8.13%	-34.38%	PCQ
ISHARES MSCI MEXICO CAPPED	USD	161.99	0.75%	1.39%	5.74%	24.52%	LSE
ISHARES MSCI EMERGING MARKETS	USD	38.98	-0.71%	-0.08%	-1.86%	-5.25%	PCQ
VANGUARD FTSE EMERGING MARKETS	CAD	32.44	-0.49%	-0.06%	-0.64%	-0.31%	TOR
ISHARES CORE MSCI EMERGING MARKETS	USD	48.37	-0.68%	-0.04%	-1.85%	-4.73%	PCQ
ISHARES JP MORGAN EMERGING MARKETS BONDS	USD	84.51	-0.39%	-1.45%	-1.61%	-5.71%	NMQ
MORGAN STANLEY EMERGING MARKETS DOMESTIC	USD	4.77	0.32%	1.38%	1.17%	4.27%	NYQ
ISHARES MSCI BRAZIL ETF	USD	29.57	-1.92%	0.03%	0.72%	-12.05%	PCQ

Source: Refinitiv

### Main Indexes

	Close	1 D	5 D	1 M	YTD	Market Cap. (US\$ Mill.)
▲ IPSA (Chile)	5,619.06	0.37%	0.34%	3.73%	12.77%	123,793
▲ IGPA (Chile)	28,780.58	0.58%	0.86%	3.10%	9.93%	151,249
▲ COLSC (Colombia)	874.00	0.18%	0.37%	-1.91%	-4.75%	3,552
▼ COLCAP (Colombia)	1,137.65	-0.91%	-0.50%	-9.23%	-22.04%	56,174
▲ S&P/BVL LIMA (Peru)	21,725.85	0.46%	0.05%	-3.34%	7.02%	104,737
▼ S&P/BVL SEL (Perú)	544.20	-0.38%	-0.24%	-6.59%	2.79%	87,743
▲ S&P/BVL LIMA 25	30,100.37	0.20%	0.04%	-3.28%	6.65%	104,186
▼ IPC (México)	55,180.97	-0.15%	0.30%	1.32%	7.11%	412,743
▼ S&P MILA 40	479.77	-1.20%	-0.37%	-4.48%	-3.51%	224,775
▼ IBOVESPA (Brazil)	21,892.03	-1.1%	-0.3%	1.1%	-1.5%	652,419

\*Legend: Variation 1D: 1 day; 5D: 5 days; 1M: 1 Month; YTD: Var% to date

Source: Refinitiv, Bloomberg

### Currency

	Price	1 D*	5 D*	1 M*	YTD*
▼ Sol (PEN)	3.67	-0.35%	0.65%	-2.40%	-1.58%
▲ Peso Chileno (CLP)	798.83	1.63%	0.89%	0.25%	-4.44%
▲ Peso Colombiano (COP)	4,537.30	0.93%	-1.37%	2.85%	14.44%
▲ Peso Mexicano (MXN)	17.49	0.34%	-0.46%	-2.80%	-11.88%
▲ Real Brasileiro (BRL)	4.94	1.03%	0.23%	0.63%	1.27%

\*Legend: Variation 1D: 1 day; 5D: 5 days; 1M: 1 Month; YTD: Var% to date

Source: Refinitiv

### Fixed Income

Instrument	Currency	Price	Bid Yield (%)	Ask Yield (%)	Duration
PERU 7.35 07/21/25	USD	4.82	105.24	454.6%	2.02
PERU 4.125 08/25/27	USD	4.55	98.22	451.8%	3.92
PERU 8.75 11/21/33	USD	5.36	127.08	526.7%	7.27
PERU 6.55 03/14/37	USD	5.45	110.34	537.4%	9.04
PERU 5.625 11/18/2050	USD	5.54	101.18	548.8%	14.02
CHILE 2.45 01/31/31	USD	4.28	88.22	420.8%	6.96
CHILE 3.125 01/21/26	USD	4.33	97.11	422.6%	2.57
CHILE 3.625 10/30/42	USD	5.25	80.03	523.0%	13.39
COLOM 11.85 03/09/28	USD	7.83	115.88	774.8%	3.82
COLOM 10.375 01/28/33	USD	8.40	112.53	803.5%	6.40
COLOM 7.375 09/18/37	USD	8.27	92.59	813.9%	8.77
COLOM 6.125 01/18/41	USD	8.55	78.16	828.1%	9.90
MEX 4 10/02/23	MXV	4.51	88.79	448.0%	7.58
MEX5.55 01/45	USD	6.12	93.34	605.8%	12.32

Source: Refinitiv

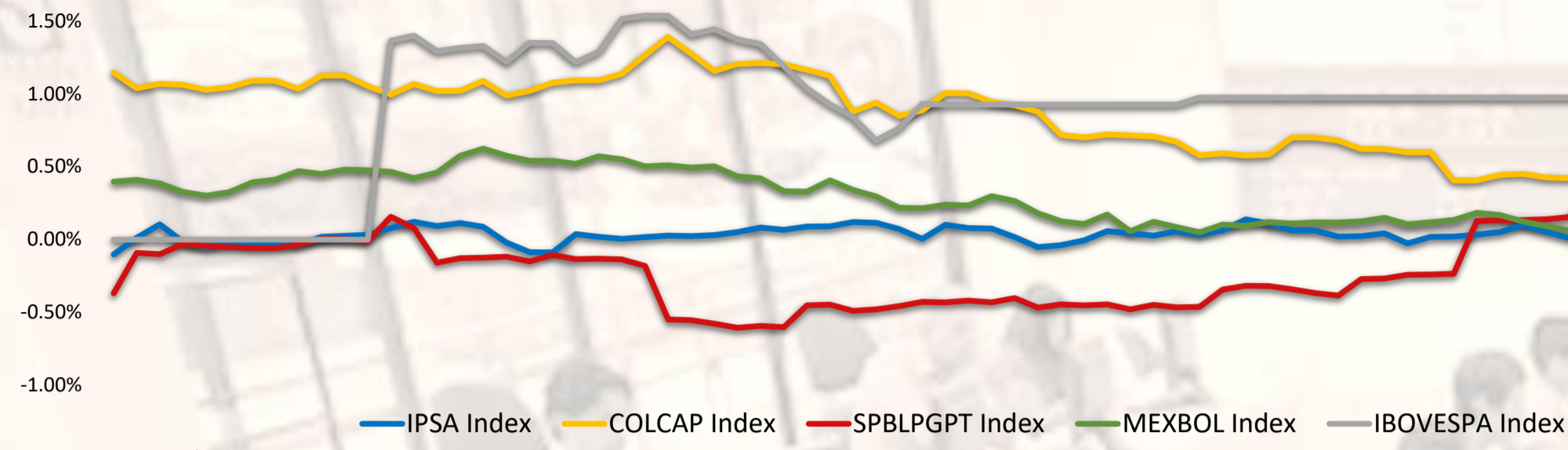
Capital Market Laboratory Coordinator: MS Javier Penny Pestana  
Collaboration: Nadia Contreras, Níkolás Díaz, Joseph Martinez y Marcelo Cossar  
email: pulsobursatil@ulima.edu.pe

The content of this document is just for informational purposes. The information and opinions expressed should not be considered as recommendations for future decisions. Under any circumstances, the Capital Market Laboratory of University of Lima will be responsible for the use of the statements in this document.

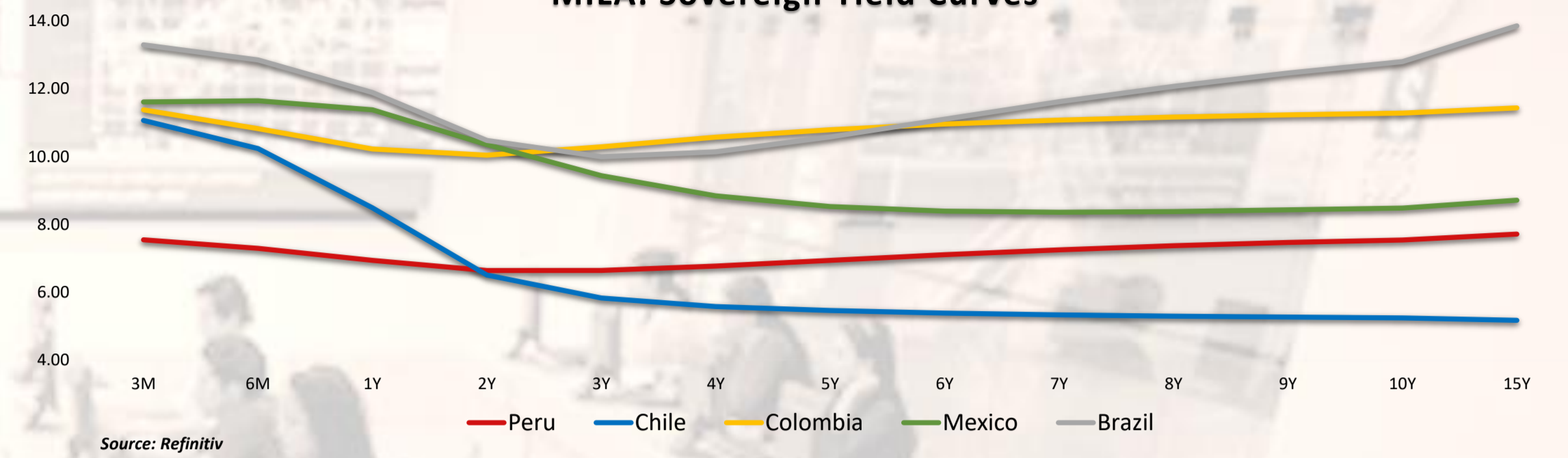
# PULSO BURSÁTIL

Facultad de Ciencias Empresariales y Económicas  
Carrera de Economía  
Laboratorio de Mercado de Capitales

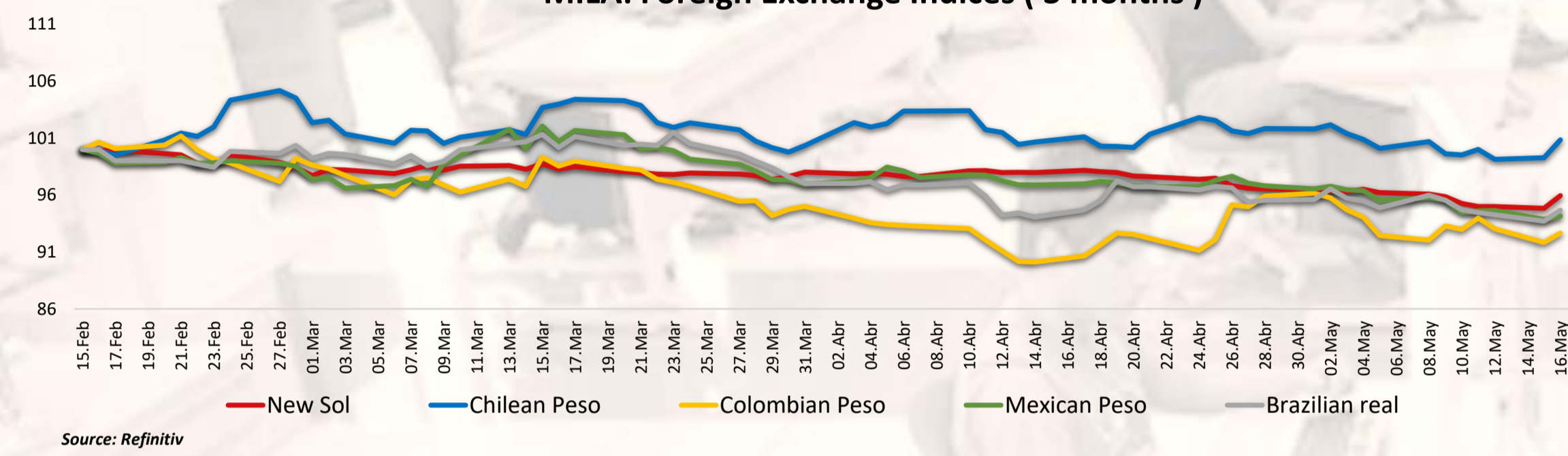
### MILA: Intraday Evolution



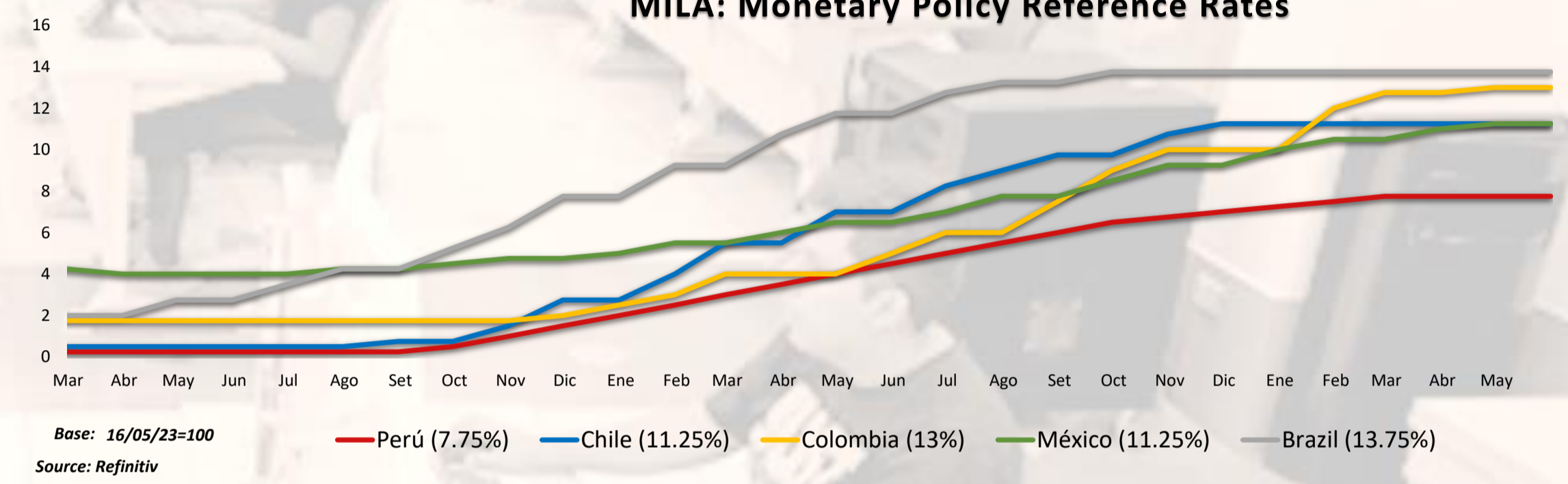
### MILA: Sovereign Yield Curves



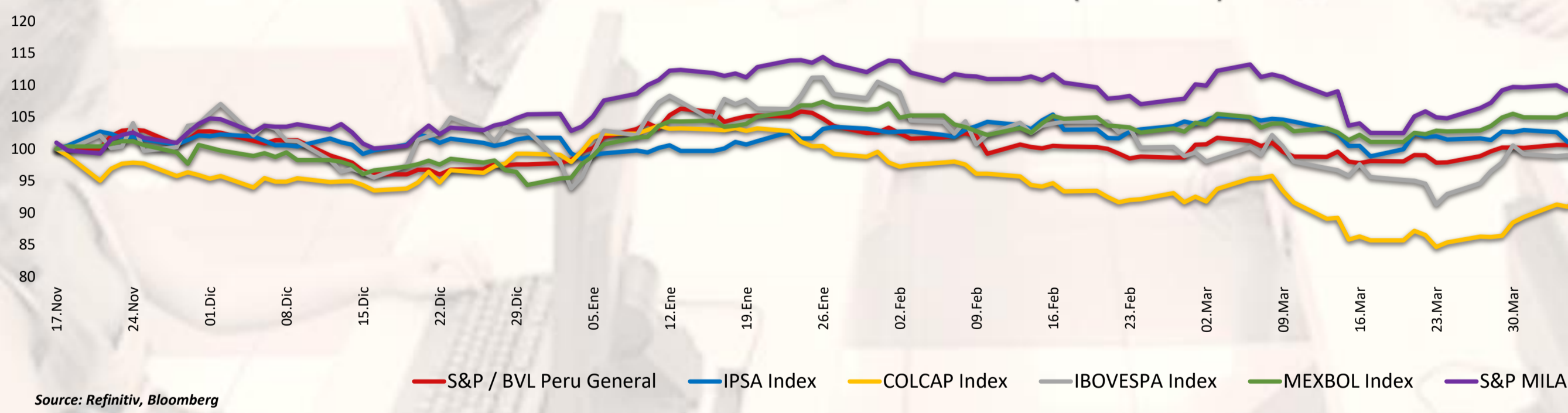
### MILA: Foreign Exchange Indices (3 months)



### MILA: Monetary Policy Reference Rates



### MILA: Stock Indices (6 months)



Capital Market Laboratory Coordinator: MS Javier Penny Pestana  
Collaboration: Nadia Contreras, Níkolás Díaz, Joseph Martínez y Marcelo Cossar  
email: pulsobursatil@ulima.edu.pe

The content of this document is just for informational purposes. The information and opinions expressed should not be consider as recommendations for future decisions. Under any circumstances, the Capital Market Laboratory of University of Lima will be responsible for the use of the statements in this document.

## WORLD

### United States:

The U.S. market closed with negative returns. The DOW JONES finished with losses as investors worried about the health of the U.S. economy. Home Depot shares fell 2.1% after the company announced its biggest revenue loss in more than two decades and lowered its current year outlook. In addition, energy producers also weighed on sentiment, with Exxon Mobil and Chevron falling 2.4% and 2.3%, respectively. The S&P 500 index also ended with negative returns as data showed retail sales rose just 0.4% in April, well below market expectations of 0.8%, as revenues at gas stations unexpectedly declined despite rising fuel prices. Finally, the NASDAQ index ended the day in the red. Among the worst performers were Ohmyhome Ltd (-79.44%), VOXX International Corp (-27.75%) and CVD Equipment Corp (-26.47%). On the other hand, Soros' fund has sold its entire Tesla stake. Thus, DOW JONES -1.01%, S&P 500 -0.64% and NASDAQ -0.18% recorded losses today.

### Europe:

The main European indices ended the session with negative returns. The pan-European STOXX 600 index closed lower, due to still elevated inflation and lingering risks to the bloc's growth amid expectations of further tightening by the ECB. It also delivered the strongest employment growth rate since the third quarter of 2021, reinforcing evidence of a tight labor market despite the European Central Bank's aggressive tightening campaign. The U.K. market, reflected in the FTSE 100, closed negative mainly due to a more than 7% drop in Vodafone shares. The pound also declined following the unexpected rise in the unemployment rate in the United Kingdom, which raised hopes of a pause in the Bank of England's interest rate hikes. Similarly, the German market, reflected in the DAX index closed in negative territory, driven by expectations of future interest rate hikes by the European Central Bank, while concerns about a possible U.S. default have also increased uncertainty surrounding international economic developments. The French market closed with a negative margin, hurt mainly by construction and telecommunications companies Bouygues (-3.7%), after posting a net loss, citing the higher cost of debt related to its acquisition of multi-technical services group Equans. Thus, FTSE 100 -0.34%; CAC 40 -0.16%; DAX -0.12%; STOXX 600 -0.42% ended with negative results.

### Asia:

Major Asian indices closed with mixed performances. The Chinese market ended with mixed performances, where investors reacted to data releases from China, such as industrial production, retail sales and fixed asset investment, which failed to meet expectations and came in below forecasts. On the other hand, the Hang Seng index closed with gains, in a context where the unemployment rate fell to 5.2% in April, being the lowest point in several months. On the other hand, the People's Bank of China maintained the medium-term lending rate at 2.75%. The South Korean market ended on a positive note, following the release of disappointing Chinese industrial production data. The best performing stock was Samsung Electronics, up 1.4%. The Japanese market closed in positive territory, in a context where domestic earnings and a weaker yen were able to boost the outlook for the Japanese market. Technology stocks led the way higher, with strong gains by Tokyo Electron (4.2%), Abalance Corp (24.7%), Recruit Holdings (3.5%), Advantest (5.5%) and SoftBank Group (1%). The Australian market ended with losses, mainly due to investors' reaction to the consumer confidence data, which had a large drop in the month of May. In addition, the Reserve Bank made an unexpected interest rate hike, which negatively affected the outlook. Thus, NIKKEI +0.73%; HANG SENG +0.04%; CSI 300 -0.32%; S&P/ASX 200 -0.45%; KOSPI +0.04%, SHANGHAI COMPOSITE -0.60% ended with mixed performances.

## ETFs

	Curr.	Close	1 D	5 D	1 M	YTD	Exchange
SPDR S&P 500 ETF TRUST	USD	410.25	-0.67%	-0.46%	99.46%	5.29%	PCQ
ISHARES MSCI EMERGING MARKETS ETF	USD	38.98	-0.71%	-0.08%	-1.86%	-5.25%	PCQ
ISHARES IBOXX \$ HIGH YIELD CORPORATE BOND ETF	USD	73.88	-0.70%	-1.08%	-1.86%	-3.37%	PCQ
FINANCIAL SELECT SECTOR SPDR FUND	USD	31.86	-0.93%	-0.53%	-3.10%	-3.22%	PCQ
VANECK GOLD MINERS ETF	USD	33.01	-2.65%	-1.52%	-5.93%	2.96%	PCQ
ISHARES RUSSELL 2000 ETF	USD	172.28	-1.46%	-0.46%	-2.40%	-2.16%	PCQ
SPDR GOLD SHARES	USD	184.87	-1.25%	-1.21%	-0.80%	7.46%	PCQ
ISHARES 20+ YEAR TREASURY BOND ETF	USD	102.88	-0.30%	-2.16%	-2.09%	-13.19%	NMQ
INVESTCO QQQ TRUST SERIES 1	USD	327.16	0.11%	0.29%	2.70%	13.33%	NMQ
ISHARES BIOTECHNOLOGY ETF	USD	129.04	-2.05%	-1.07%	-2.56%	11.62%	NMQ
ENERGY SELECT SECTOR SPDR FUND	USD	76.98	-2.46%	-1.81%	-11.75%	-5.86%	PCQ
PROSHARES ULTRA VIX ST FUTURES ETF	USD	3.49	4.18%	0.29%	-12.31%	-78.20%	BTQ
UNITED STATES OIL ETF	USD	62.54	-0.71%	-1.12%	-13.25%	-23.40%	PCQ
ISHARES MSCI BRAZIL ETF	USD	29.57	-1.92%	0.03%	0.72%	-12.05%	PCQ
SPDR S&P OIL & GAS EXP & PRODUCTION ETF	USD	117.81	-2.85%	-0.09%	-12.36%	-13.87%	PCQ
UTILITIES SELECT SECTOR SPDR FUND	USD	66.65	-2.22%	-2.91%	-3.25%	-7.10%	PCQ
ISHARES US REAL ESTATE ETF	USD	81.98	-2.44%	-2.58%	-1.30%	-13.60%	PCQ
SPDR S&P BIOTECH ETF	USD	85.03	-2.88%	-1.14%	8.75%	20.90%	PCQ
ISHARES IBOXX \$ INVESTMENT GRADE CORP BOND ETF	USD	107.20	-0.50%	-1.64%	-2.00%	-4.64%	PCQ
ISHARES JP MORGAN USD EMERGING MARKETS BOND ETF	USD	84.51	-0.39%	-1.45%	-1.61%	-5.71%	NMQ
REAL ESTATE SELECT SECT SPDR FUND	USD	36.03	-2.67%	-2.67%	-1.56%	-14.92%	PCQ
ISHARES CHINA LARGE-CAP ETF	USD	28.74	-1.03%	0.70%	0.10%	-5.52%	PCQ
CONSUMER STAPLES SPDR FUND	USD	76.28	-0.84%	-0.70%	1.46%	7.89%	PCQ
VANECK JUNIOR GOLD MINERS ETF	USD	39.12	-2.95%	-1.04%	-7.71%	0.08%	PCQ
SPDR BLOOMBERG HIGH YIELD BOND ETF	USD	90.69	-0.71%	-1.06%	-1.83%	-4.23%	PCQ
VANGUARD REAL ESTATE INDEX FUND ETF	USD	79.84	-2.50%	-2.68%	-1.66%	-15.81%	PCQ
DIREXION DAILY GOLD MINERS INDEX BULL 2X SHARES	USD	42.78	-5.46%	-3.50%	-12.66%	-11.02%	PCQ
PROSHARES ULTRASHORT 20+ YEAR TREASURY	USD	29.66	0.78%	4.62%	3.82%	18.97%	PCQ
ISHARES MSCI EAFE ETF	USD	73.00	-0.95%	-0.37%	-0.30%	7.72%	PCQ
ISHARES PREFERRED AND INCOME SECURITIES ETF	USD	29.43	-0.94%	-0.98%	-6.15%	-10.71%	NMQ
WISDOMTREE JAPAN HEDGED EQUITY ETF	USD	74.78	-0.53%	1.64%	4.49%	18.04%	PCQ
GRAYSCALE BITCOIN TRUST (BTC)	USD	14.63	-2.47%	-0.20%	-16.06%	-21.93%	PNK

Source: Refinitiv

## Main Indexes

	Close	1 D	5 D	1 M	YTD	Market Cap. (US\$ Mill.)
▼ Dow Jones (EEUU)	51.06	-2.30%	-2.45%	-9.63%	-25.03%	236,098
▼ Standard & Poor's 500 (EEUU)	4,109.90	-0.64%	-0.50%	-0.67%	5.35%	35,988
▼ NASDAQ Composite (EEUU)	12,343.05	-0.18%	0.12%	1.81%	8.71%	20,814
▼ Stoxx EUROPE 600 (Europa)	464.70	-0.42%	0.23%	-0.47%	7.79%	538,270,340
▼ DAX (Alemania)	29.60	-0.67%	-0.37%	-1.53%	12.14%	213
▼ FTSE 100 (Reino Unido)	7,751.08	-0.34%	0.27%	-1.53%	4.89%	524
▼ CAC 40 (Francia)	7,406.01	-0.16%	0.33%	-1.51%	17.83%	3,088,253
▼ IBEX 35 (España)	9,191.40	-0.11%	0.09%	-1.83%	8.33%	695,191
▲ MSCI AC Asia Pacific Index	514.05	-0.04%	-0.05%	-2.68%	-4.75%	21,650
▲ HANG SENG (Hong kong)	19,978.25	0.04%	1.19%	-2.25%	-3.57%	22,378
▼ SHANGHAI SE Comp. (China)	3,290.99	-0.60%	-0.56%	-1.41%	4.59%	55,223,972
▲ NIKKEI 225 (Japón)	29,842.99	0.73%	2.46%	4.74%	11.61%	532,272
▼ S&P / ASX 200 (Australia)	7,234.70	-0.45%	-0.24%	-1.72%	1.25%	33,229
▲ KOSPI (Corea del Sur)	2,480.24	0.04%	-0.43%	-3.55%	-6.03%	6,024,476

\*Legend: Variation 1D: 1 day; 5D: 5 days; 1M: 1 Month; YTD: Var% to date

Source: Refinitiv, Bloomberg

## Equity

### United States (Stocks from SPX Index)

Largest Gains	Curr.	Price	▲%	Exchange	Largest Losses	Curr.	Price	▼%	Exchange
ADV MICRO DEVI/d	USD	101.48	4.19%	NSQ	CSR ENTRNMNT O/d	USD	41.38	-6.89%	NSQ
HGH WR NTWRK O/d	USD	0.1089	3.81%	PNK	GEN DIGITAL OR/d	USD	15.46	-5.79%	NSQ
GE HLTCH TCH O/d	USD	77.78	3.80%	NSQ	ETSY INC/d	USD	92.65	-5.31%	NSQ
SIGNATURE BK O/d	USD	0.122	3.39%	PNK	THE AES CORP/d	USD	20.85	-5.18%	NYQ
ALPHABET INC C/d	USD	120.09	2.68%	NSQ	WRN BRS DS A O/d	USD	12.15	-5.15%	NSQ

Source: Refinitiv

### Europe (Stocks from STOXX EUROPE 600)

Largest Gains	Curr.	Price	▲%	Exchange	Largest Losses	Curr.	Price	▼%	Exchange
BLEND LABS A O/d	USD	0.9865	26.49%	NYQ	SE ORPHAN BIOV/d	SEK	222.8	-14.50%	STO
LI AUTO INC AD/d	USD	28.22	13.93%	NSQ	LMP AUTMTV ORD/d	USD	1.31	-12.08%	PNK
EMERGENT BIOSO/d	USD	10.81	11.44%	NYQ	BACHEM HOLD N/d	CHF	92.95	-10.11%	SWX
BAVARIAN NORDI/d	DKK	202.6	7.82%	CPH	CHBGMU INDPT M/d	CAD	0.12	-7.69%	CVE
ALCON N/d	CHF	70.58	7.36%	SWX	PLAYAGS INC OR/d	USD	5.1	-7.61%	NYQ

Source: Refinitiv

## Currency

	Price	1 D*	5 D*	1 M*	YTD*
▲ Euro	1.0862	0.01%	-0.48%	-1.25%	2.86%
▲ Yen	136.34	0.17%	1.34%	1.92%	6.64%
▲ Yuan	6.952	0.00%	0.06%	1.21%	3.88%
▲ Won Koreano	1341.99	0.50%	0.84%	2.91%	5.37%
▼ Libra Esterlina	1.2481	-0.37%	-0.22%	0.55%	-0.05%
▼ Dólar de Hong Kong	7.8381	-0.01%	0.03%	-0.13%	-0.12%
▼ Dólar Australiano	0.6653	-0.67%	-0.72%	-0.82%	-5.40%

\*Legend: Variation 1D: 1 day; 5D: 5 days; 1M: 1 Month; YTD: Var% to date

## Commodities

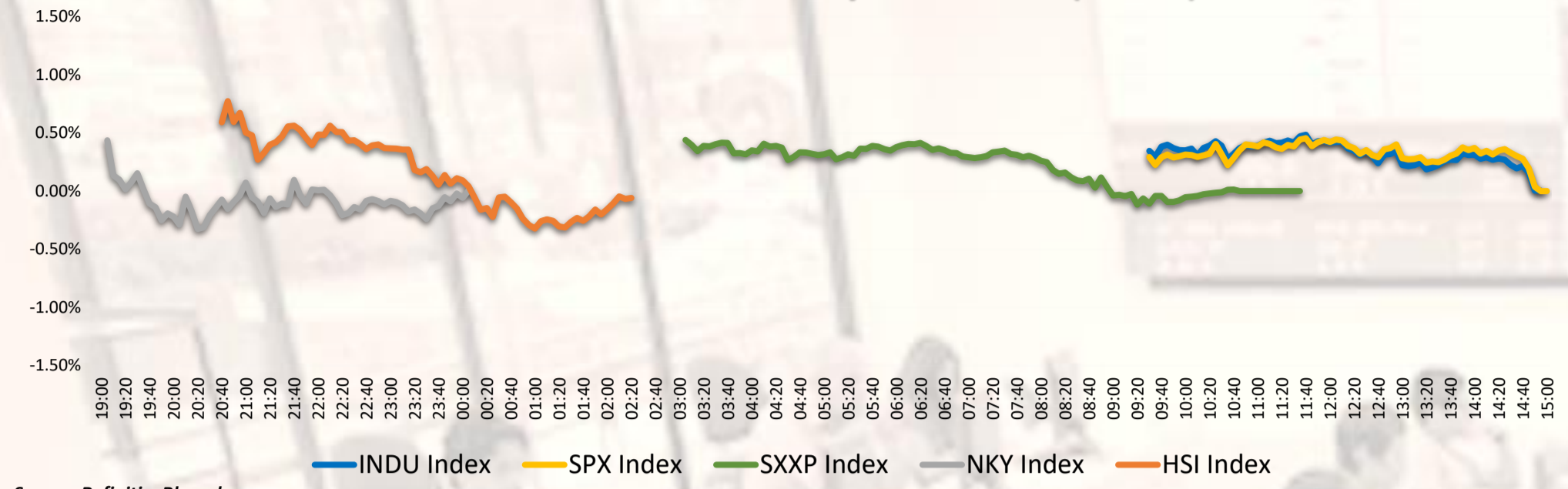
	Price	1 D*	5 D*	1 M*	YTD*
Oro (US\$ Oz. T) (LME)	8218.25	0.00%	1.05%	-8.99%	-13.04%
Plata (US\$ Oz. T) (LME)	2517.5	0.00%	-0.58%	-12.40%	-32.43%
Cobre (US\$ TM) (LME)	70.86	-0.35%	-0.01%	-14.04%	-20.09%
Zinc (US\$ TM) (LME)	25314	0.00%	-1.18%	1.75%	-27.56%
Petroleo WTI (US\$ Barril) (NYM)	2057.5	0.00%	-2.03%	-6.39%	-5.90%
Estaño (US\$ TM) (LME)	26.07	-0.84%	0.19%	11.13%	36.49%
Plomo (US\$ TM) (LME)	26.07	-0.84%	0.19%	11.13%	36.49%
Azúcar #11 (US\$ Libra) (NYB-ICE)	2995	0.50%	-0.27%	3.38%	19.94%
Cacao (US\$ TM) (NYB-ICE)	0	0.00%	0.00%	0.00%	0.00%
Café Arábica (US\$ TM) (NYB-ICE)	0	0.00%	0.00%	0.00%	0.00%

\*Legend: Variation 1D: 1 day; 5D: 5 days; 1M: 1 Month; YTD: Var% to date

Capital Market Laboratory Coordinator: MS Javier Penny Pestana  
Collaboration: Nadia Contreras, Nikolas Díaz, Joseph Martínez y Marcelo Cossar  
email: pulsohorsatil@ulima.edu.pe

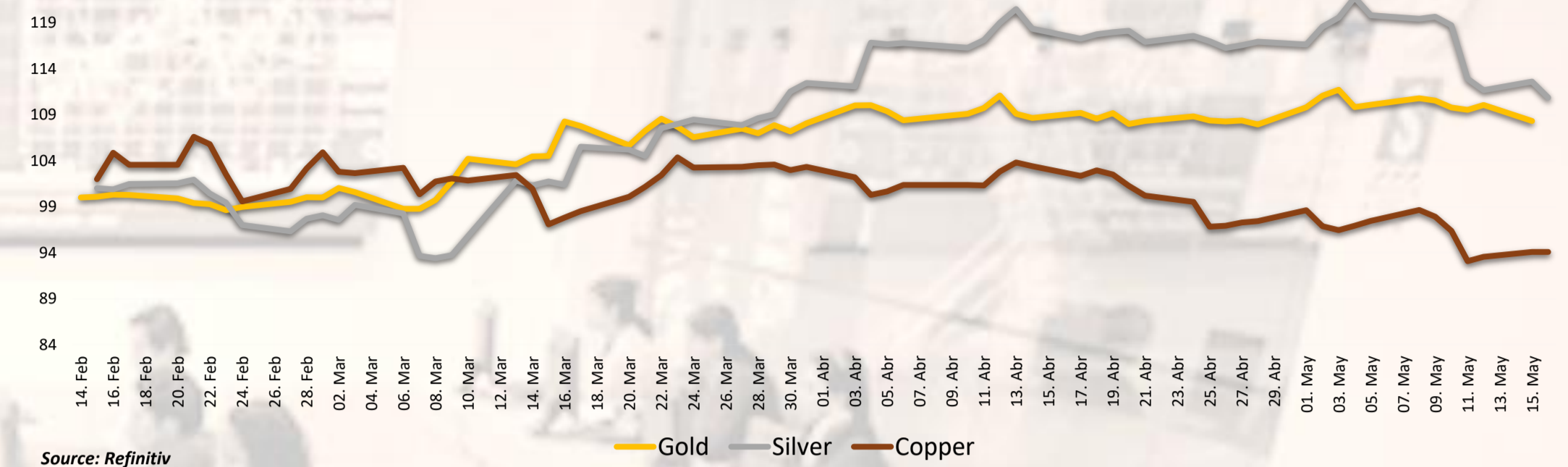
The content of this document is just for informational purposes. The information and opinions expressed should not be consider as recommendations for future decisions. Under any circumstances, the Capital Market Laboratory of University of Lima will be responsible for the use of the statements in this document.

**Market Intraday Evolution (var %)**



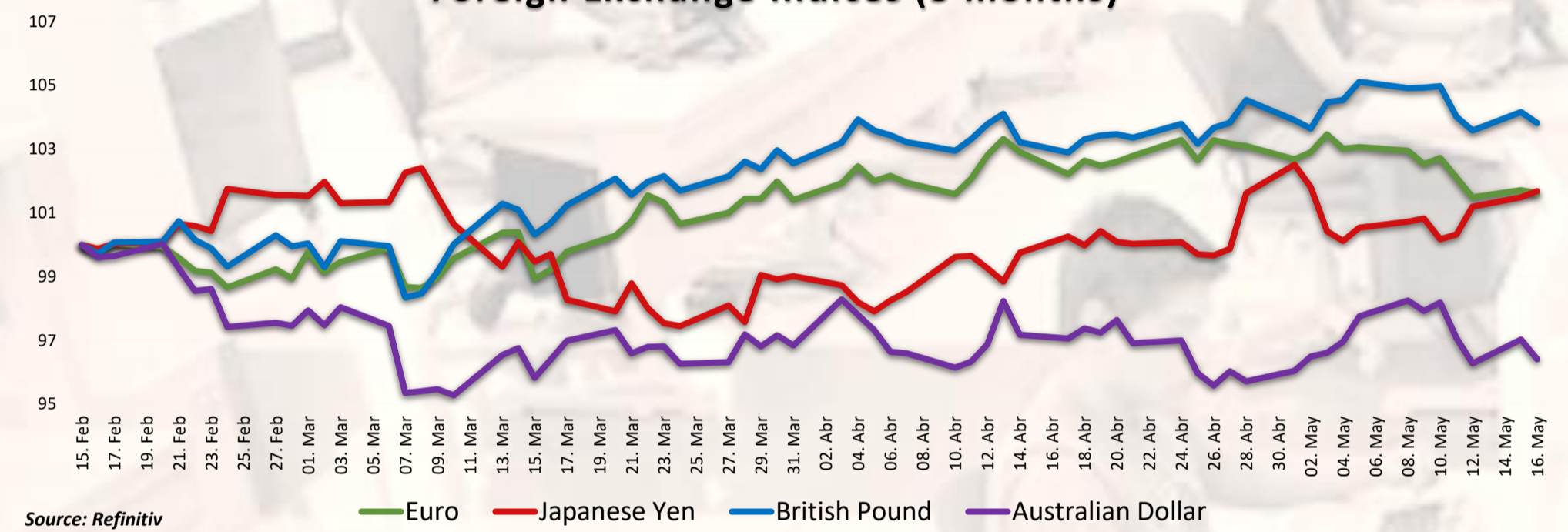
Source: Refinitiv, Bloomberg

**Principal Metals Index (3 months)**



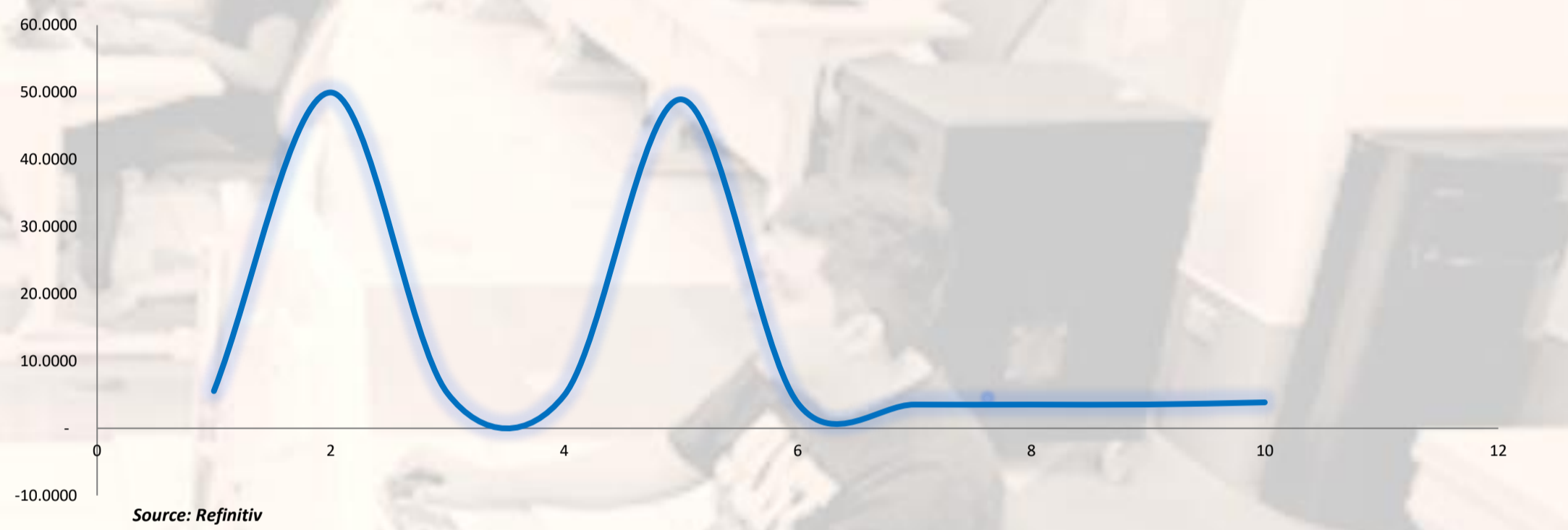
Source: Refinitiv

**Foreign Exchange Indices (3 months)**



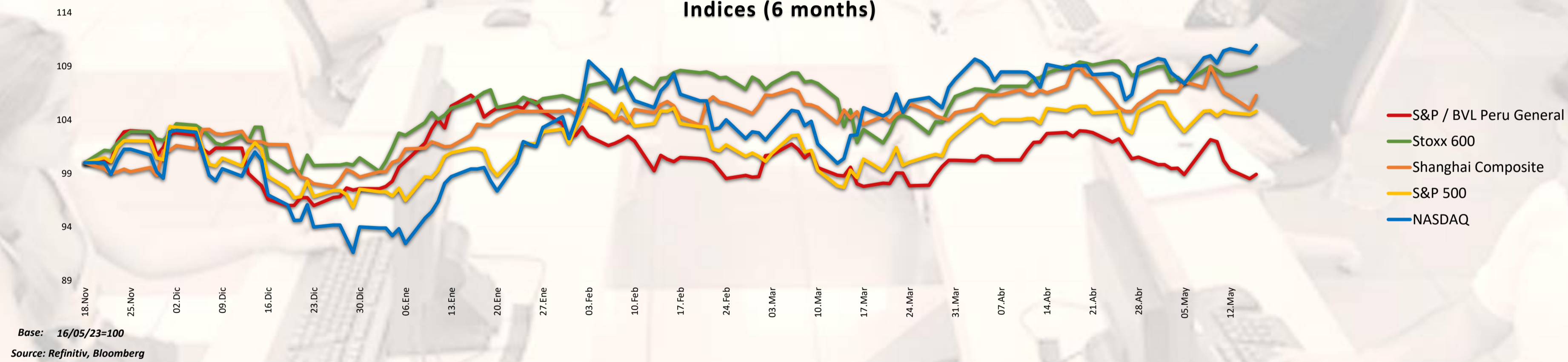
Source: Refinitiv

**USA Treasury Bonds Yield Curve (%)**



Source: Refinitiv

**Indices (6 months)**



Base: 16/05/23=100  
Source: Refinitiv, Bloomberg

Capital Market Laboratory Coordinator: MS Javier Penny Pestana  
Collaboration: Nadia Contreras, Nikolas Díaz, Joseph Martinez y Marcelo Cossar  
email: pulsobursatil@ulima.edu.pe

**RANKING STOCKS LIMA**

Ticket	Currency	Price	1 D*	5 D*	1 M*	YTD*	Frequency	Volume	Beta	Dividend Yield (%)	Price Earning	Capitalización Bursátil (M US\$)	Sector	Index Weight
▲ ALCORCL.LM	S/.	6.12	0.33%	1.16%	-0.98%	-5.38%	0.00%	0	0.62	4.56	8.58	1,722,978	Industrial	19.19%
▲ BACKUS1.LM	S/.	25.50	0.00%	1.19%	3.48%	9.46%	90.00%	0	0.41	6.41	94.56	201,354	Industriales	14.76%
▼ BAP	US\$	134.79	-1.71%	-7.31%	3.40%	-0.64%	90.00%	301,661	0.95	4.92	7.20	40,961,126	Diversas	1.11%
▼ BVN	S/.	1.63	-1.21%	-2.40%	9.43%	12.55%	85.00%	0	0.71	7.85	0.00	42,051	Bancos y Financieras	33.21%
▼ CASAGRC1.LM	S/.	1.63	-1.21%	-2.40%	9.43%	12.55%	85.00%	0	0.71	7.85	0.00	42,051	Bancos y Financieras	33.21%
▼ BBVAC1.LM	S/.	1.63	-1.21%	-2.40%	9.43%	12.55%	85.00%	0	0.71	7.85	0.00	42,051	Bancos y Financieras	33.21%
▲ CORAREI1.LM	S/.	1.20	0.00%	-5.51%	-6.53%	-13.87%	80.00%	0	1.06	4.42	0.00	3,652	Industriales	-19.77%
▲ CPAC.K	US\$	5.48	2.24%	2.24%	2.43%	6.17%	90.00%	863	0.50	10.47	18.72	4,689	Industriales	-1.43%
▲ CVERDECL.LM	US\$	29.10	0.00%	-2.68%	-0.75%	-0.08%	85.00%	0	1.14	2.45	10.14	36,957	Mineras	-12.48%
▼ ENGEPECL.LM	S/.	4.18	-0.48%	0.82%	14.74%	21.43%	90.00%	0	0.76	9.20	10.82	7,054	Servicios Públicos	81.30%
▲ ENDISPC1.LM	US\$	29.10	0.00%	-2.68%	-0.75%	-0.08%	85.00%	0	1.14	2.45	10.14	36,957	Mineras	-12.48%
▼ FERREYCL.LM	S/.	2.09	-0.95%	-1.88%	3.10%	-1.46%	90.00%	0	0.99	11.30	0.00	100,403	Diversas	3.97%
▲ AENZACL.LM	S/.	0.57	0.00%	-6.56%	-10.94%	-31.33%	65.00%	0	0.73	0.00	0.00	1,084	Diversas	-52.93%
▼ IFS	US\$	22.05	-3.08%	-3.59%	-4.75%	-6.17%	90.00%	37,428	1.06	5.19	5.27	829,928	Diversas	-10.51%
▲ INRETC1.LM	US\$	32.10	0.00%	3.55%	-1.08%	-0.22%	80.00%	0	0.74	2.58	13.06	17,655	Diversas	-4.36%
▲ LUSURCL.LM	S/.	14.62	0.00%	0.83%	0.83%	-2.86%	85.00%	0	0.57	2.39	0.00	53,141	Servicios Públicos	-1.46%
▼ MINSURI1.LM	S/.	3.64	-0.82%	-0.27%	-4.21%	2.54%	90.00%	0	1.10	10.26	19.36	9,882	Mineras	-25.18%
▼ SCCO.K	US\$	69.44	-3.96%	-12.15%	-7.18%	14.99%	90.00%	1,618,507	1.25	5.53	17.66	113,074,222	Mineras	27.74%
▲ SIDERCL.LM	S/.	1.33	0.00%	0.00%	-12.59%	-17.39%	85.00%	0	0.90	40.46	0.00	2,791	Industriales	-3.09%
▲ UNACEMCL.LM	S/.	2.77	0.00%	1.82%	8.74%	9.58%	10.00%	0	0.02	3.45	0.00	396	Diversas	10.95%
▲ VOLCABCL.LM	S/.	2.77	0.00%	1.82%	8.74%	9.58%	10.00%	0	0.02	3.45	0.00	396	Diversas	10.95%
▼ BROCALCL.LM	S/.	1.63	-1.21%	-2.40%	9.43%	12.55%	85.00%	0	0.71	7.85	0.00	42,051	Bancos y Financieras	33.21%
▼ CORARECL.LM	S/.	1.63	-1.21%	-2.40%	9.43%	12.55%	85.00%	0	0.71	7.85	0.00	42,051	Bancos y Financieras	33.21%
▼ ENGIECL.LM	S/.	3.90	-75.92%	-74.98%	-69.98%	-42.70%	90.00%	0	0.90	1.79	5.68	4,745	Servicios Públicos	331.62%
▲ GBVLACL.LM	S/.	0.57	0.00%	-6.56%	-10.94%	-31.33%	65.00%	0	0.73	0.00	0.00	1,084	Diversas	-52.93%

Quantity of Shares: 25  
Source: Refinitiv

Up  
Down  
Hold

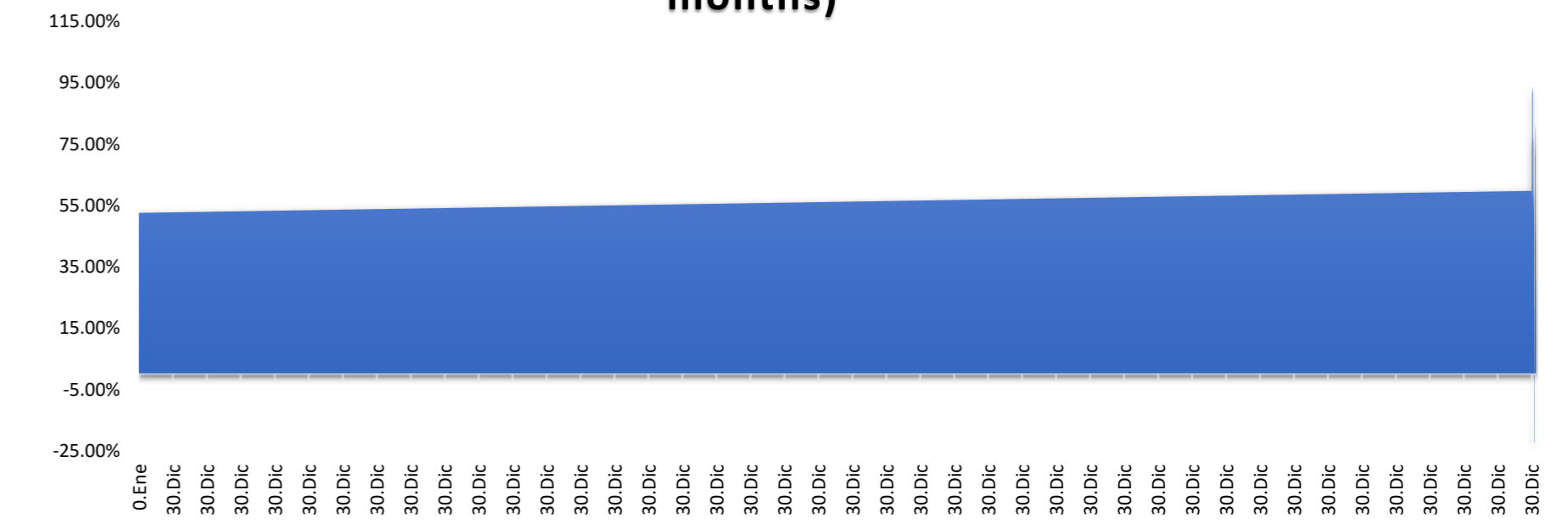
\*\* PER is used in the stock market and original currency of the instrument  
\*Legend: Variation 1D: 1 day; 5D: 5 days; 1M: 1 Month; YTD: Var% to date

**Sectorial Indices**

	Close	1 D*	5 D*	1 M*	YTD*	Beta
S&P/BVL Consumer Index	1,222.89	0.61%	2.19%	-0.86%	-0.86%	0.31
S&P/BVL Industrial Index	232.27	-0.62%	-1.14%	0.40%	-5.90%	0.33
S&P/BVL Financials Index	929.74	-0.41%	-6.38%	1.47%	-2.73%	1.39
S&P/BVL Construction Index	223.80	-0.47%	-0.80%	0.43%	-7.94%	0.29
S&P/BVL Public Services Index	1,201.73	4.28%	6.65%	7.37%	55.23%	0.28
S&P/BVL Mining Index	425.05	1.08%	-5.81%	-11.63%	7.59%	1.58
S&P/BVL Electric Utilities Index	1,173.19	4.28%	6.65%	7.37%	55.23%	0.28

\*Legend: Variation 1D: 1 day; 5D: 5 days; 1M: 1 Month; YTD: Var% to date  
Source: Refinitiv

**Correlation Yield. Mining Index vs. London Metal Index (3 months)**



Source: Refinitiv

**Latin America Credit Rating**

**RISK RATINGS**

Country	Moody/s	Fitch	S&P
Peru	A	BBB	BBB
Mexico	Baa2	BBB-	BBB
Venezuela	WR	WD	NR
Brazil	BBB	BB-	BB-
Colombia	BB+	BB+	BB+
Chile	AA-	A-	A
Argentina	CCC	WD	CCC-
Panama	WD	BBB-	BBB

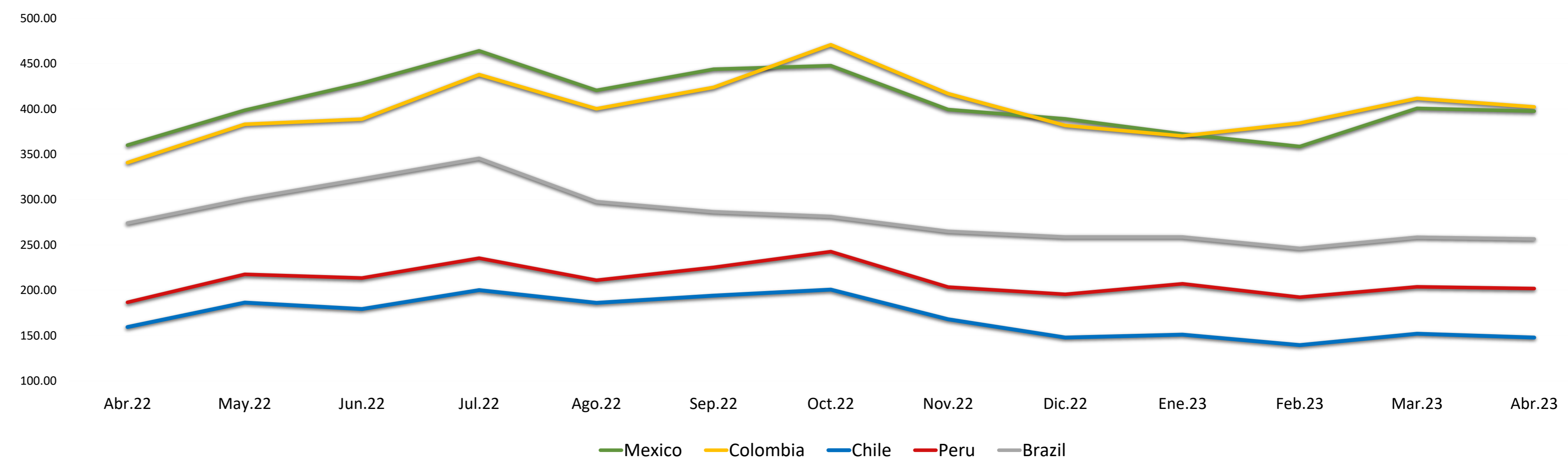
Source: Refinitiv, Bloomberg

**Legend**

	Moody/s	Fitch	S&P
Prime	Aaa	AAA	AAA
High Grade	Aa1	AA+	AA+
	Aa2	AA	AA
	Aa3	AA-	AA-
High Grade Medium	A1	A+	A+
	A2	A	A
	A3	A-	A-
Low Grade Medium	Baa1	BBB+	BBB+
	Baa2	BBB	BBB
	Baa3	BBB-	BBB-
Non-Investment Grade Speculative	Ba1	BB+	BB+
	Ba2	BB	BB
	Ba3	BB-	BB-
Highly Speculative	B1	B+	B+
	B2	B	B
	B3	B-	B-
Substantial Risk	Caa1	CCC+	CCC+
	Caa2	CCC	CCC
	Caa3	CCC-	CCC-
Extremely Speculative	Ca	CC	CC
		C	C
Low Expectation of Payment		RD	SD
Default	C	DDD	D
		DD	
		D	
Unclassified	WR		NR

Source: Refinitiv, Bloomberg

**LATAM Country Risk (bps)**



	Abr.22	May.22	Jun.22	Jul.22	Ago.22	Sep.22	Oct.22	Nov.22	Dic.22	Ene.23	Feb.23	Mar.23	Abr.23
Peru	186.67	217.55	213.55	235.43	211.00	225.27	242.59	203.41	195.50	207.05	192.30	203.83	201.90
Brazil	274.06	300.64	322.82	345.48	297.70	286.56	281.30	264.90	258.64	258.64	246.10	258.35	256.55
Chile	159.44	186.32	179.32	200.10	186.09	194.05	200.69	167.97	147.82	150.95	139.45	152.00	147.75
Colombia	340.78	383.05	388.73	437.86	400.26	423.83	470.84	416.81	381.77	370.18	384.35	411.61	402.15
Mexico	360.00	398.59	428.41	464.10	420.43	443.77	447.72	399.31	389.00	372.32	358.55	400.70	397.60

Source: BCRP

Capital Market Laboratory Coordinator: MS Javier Penny Pestana  
Collaboration: Nadia Contreras, Nikolas Díaz, Joseph Martinez y Marcelo Cossar  
email: pulsoBursatil@ulima.edu.pe