

LATINOAMERICA

Lima, 16 de Mayo de 2023

Peru: The BVL General index ended today's session with a positive result of +0.46%. The index maintains a cumulative annual trend of 1.85% in local currency and a cumulative trend of 4.91% in dollar-adjusted currency. Regarding the S&P/BVL Peru SEL, it varied -0.38% while the S&P/BVL LIMA 25 varied +0.20%. The spot PEN reached S/.3.6953. Headline: Construction and industry are the sectors that most detract from growth.

Chile: The IPSA index ended the day with a positive return of +0.37%. The most benefited sectors of the day were Non Basic Consumer Products (+1.67%) and Materials (+1.50%). The best performing stocks were Engie Energía Chile SA (+5.11%) and Sociedad de inversiones Oro BI (+2.71%). Headline: CLP leads Latam currencies losses on copper drop: Andes FX.

Colombia: The COLCAP index ended the session with a negative return of -0.91%. The sectors that lost the most during the day were Finance (-1.16%) and Materials (-1.07%). The worst performing stocks were Banco Davivienda SA (-2.56%) and Cementos Argos (-2.54%). Headline: Colombia will propose savings fund in pension reform: Bonilla.

Mexico: The IPC index closed the day in positive territory at -0.15%. The worst performing sectors of the day were Financials (-1.45%) and Non-Basic Consumer Products (-0.59%). The worst performing stocks were Grupo Financiero Banorte SAB (-2.53%) and Industrias Peñoles SAB de CV (-1.34%). Headline: Mexico's international reserves fell to US\$ 203.5 billion, says Banxico.

Brazil: The IBOVESPA index closed the day in negative territory at -0.77%. The worst performing sectors of the day were Non-Basic Consumer Products (-4.97%) and Materials (-1.67%). The worst performing stocks were 3R PETROLEUM OLEO E GAS SA (-7.53%) and Cia. de Saneamento Básico do E (-2.77%). Headline: Petrobras eases fears of intervention in fuel prices in new policy.

Renta Variable

Más Subieron	Bolsa	Mon.	Precio	▲%
ENGIE ENERGIA CH	SGO	CLP	699.00	5.11%
GRUPO AEROPORTUA	MEX	MXN	198.96	2.82%
FALABELLA SA	SGO	CLP	1,890.00	1.80%
ENEL AMERICAS SA	SGO	CLP	111.00	1.69%
ENEL CHILE SA	SGO	CLP	47.90	1.38%

Fuente: Refinitiv

Más Bajaron	Bolsa	Mon.	Precio	▼%
AES GENER S/SGO	SGO	CLP	114	-5.00%
CEMENTOS ARGOS	COL	COP	2,992	-2.54%
GRUPO F BAN MEX	MEX	MXN	149	-2.53%
BANCO CRED INVER	SGO	CLP	23,500	-2.09%
VOLCAN CIA LIMA	LMA	PEN	0	-2.05%

Fuente: Refinitiv

Por Monto Negociado	Bolsa	Monto (US\$)
AMERICA MOVIL-L	NYQ	62,658.71
GRUPO F BANORT-O	MEX	51,435.58
WALMART DE MEXIC	MEX	43,954.49
CENCOSUD SA	SGO	29,276.91
CEMEX SAB-CPO	MEX	19,979.74

Fuente: Refinitiv

Por Volumen	Bolsa	Volumen
ITAU CORPBANCA	SGO	406,886,875.00
ENEL CHILE SA	SGO	176,968,574.00
BANCO SANTANDER	SGO	158,243,997.00
BANCO DE CHILE	SGO	56,108,507.00
CEMEX SAB-CPO	MEX	30,309,417.00

Fuente: Refinitiv

ETFs

	Mon.	Cierre	1 D	5 D	1 M	YTD	Bolsa
ISHARES MSCI ALL PERU CAPPED	USD	30.56	-0.44%	-0.42%	-3.57%	2.65%	PCQ
ISHARES MSCI CHILE CAPPED	USD	29.76	-1.88%	-1.26%	1.74%	6.06%	BTQ
GLOBAL X MSCI COLOMBIA	USD	19.48	-1.84%	-0.45%	-8.13%	-34.38%	PCQ
ISHARES MSCI MEXICO CAPPED	USD	161.99	0.75%	1.39%	5.74%	24.52%	LSE
ISHARES MSCI EMERGING MARKETS	USD	38.98	-0.71%	-0.08%	-1.86%	-5.25%	PCQ
VANGUARD FTSE EMERGING MARKETS	CAD	32.44	-0.49%	-0.06%	-0.64%	-0.31%	TOR
ISHARES CORE MSCI EMERGING MARKETS	USD	48.37	-0.68%	-0.04%	-1.85%	-4.73%	PCQ
ISHARES JP MORGAN EMERGING MARKETS BONDS	USD	84.51	-0.39%	-1.45%	-1.61%	-5.71%	NMQ
MORGAN STANLEY EMERGING MARKETS DOMESTIC	USD	4.77	0.32%	1.38%	1.17%	4.27%	NYQ
ISHARES MSCI BRAZIL ETF	USD	29.57	-1.92%	0.03%	0.72%	-12.05%	PCQ

Fuente: Refinitiv

Principales índices

	Cierre	1 D	5 D	1 M	YTD	Cap. Burs. (US\$ Mill.)
▲ IPSA (Chile)	5,619.06	0.37%	0.34%	3.73%	12.77%	123,793
▲ IGPA (Chile)	28,780.58	0.58%	0.86%	3.10%	9.93%	151,249
▲ COLSC (Colombia)	874.00	0.18%	0.37%	-1.91%	-4.75%	3,552
▼ COLCAP (Colombia)	1,137.65	-0.91%	-0.50%	-9.23%	-22.04%	56,174
▲ S&P/BVL LIMA (Peru)	21,725.85	0.46%	0.05%	-3.34%	7.02%	104,737
▼ S&P/BVL SEL (Perú)	544.20	-0.38%	-0.24%	-6.59%	2.79%	87,743
▲ S&P/BVL LIMA 25	30,100.37	0.20%	0.04%	-3.28%	6.65%	104,186
▼ IPC (México)	55,180.97	-0.15%	0.30%	1.32%	7.11%	412,743
▼ S&P MILA 40	479.77	-1.20%	-0.37%	-4.48%	-3.51%	224,775
▼ IBOVESPA (Brazil)	21,892.03	-1.1%	-0.3%	1.1%	-1.5%	652,419

*Leyenda: Variación 1D: 1 Día; 5D: 5 Días; 1M: 1 Mes; YTD: Var. % a la fecha

Fuente: Refinitiv, Bloomberg

Monedas

	Precio	1 D*	5 D*	1 M*	YTD*
▼ Sol (PEN)	3.67	-0.35%	0.65%	-2.40%	-1.58%
▲ Peso Chileno (CLP)	798.83	1.63%	0.89%	0.25%	-4.44%
▲ Peso Colombiano (COP)	4,537.30	0.93%	-1.37%	2.85%	14.44%
▲ Peso Mexicano (MXN)	17.49	0.34%	-0.46%	-2.80%	-11.88%
▲ Real Brasileiro (BRL)	4.94	1.03%	0.23%	0.63%	1.27%

*Leyenda: Variación 1D: 1 Día; 5D: 5 Días; 1M: 1 Mes; YTD: Var. % a la fecha

Fuente: Refinitiv

Renta Fija

Instrumento	Moneda	Precio	Bid Yield (%)	Ask Yield (%)	Duración
PERU 7.35 07/21/25	USD	4.82	105.24	454.6%	2.02
PERU 4.125 08/25/27	USD	4.55	98.22	451.8%	3.92
PERU 8.75 11/21/33	USD	5.36	127.08	526.7%	7.27
PERU 6.55 03/14/37	USD	5.45	110.34	537.4%	9.04
PERU 5.625 11/18/2050	USD	5.54	101.18	548.8%	14.02
CHILE 2.45 01/31/31	USD	4.28	88.22	420.8%	6.96
CHILE 3.125 01/21/26	USD	4.33	97.11	422.6%	2.57
CHILE 3.625 10/30/42	USD	5.25	80.03	523.0%	13.39
COLOM 11.85 03/09/28	USD	7.83	115.88	774.8%	3.82
COLOM 10.375 01/28/33	USD	8.40	112.53	803.5%	6.40
COLOM 7.375 09/18/37	USD	8.27	92.59	813.9%	8.77
COLOM 6.125 01/18/41	USD	8.55	78.16	828.1%	9.90
MEX 4 10/02/23	MXV	4.51	88.79	448.0%	7.58
MEX5.55 01/45	USD	6.12	93.34	605.8%	12.32

Fuente: Refinitiv

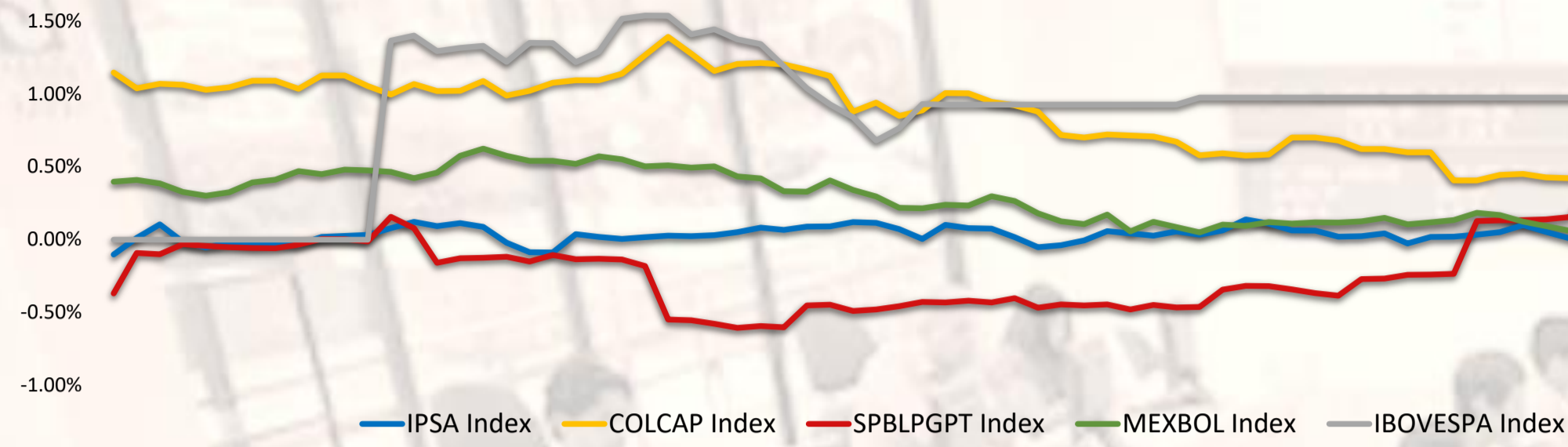
Coordinador Laboratorio de Mercado de Capitales: MS Javier Penny Pestana
Apoyo: Nadia Contreras, Nikolas Díaz, Joseph Martinez y Marcelo Cossar
email: pulsobursatil@ulima.edu.pe

El contenido del presente documento es únicamente informativo. Los datos y opiniones expresados no deben ser interpretados como recomendaciones para la toma de decisiones futuras. Bajo ninguna circunstancia, el Laboratorio de Mercado de Capitales de la Universidad de Lima se hará responsable por el uso de lo expresado en este documento.

PULSO BURSÁTIL

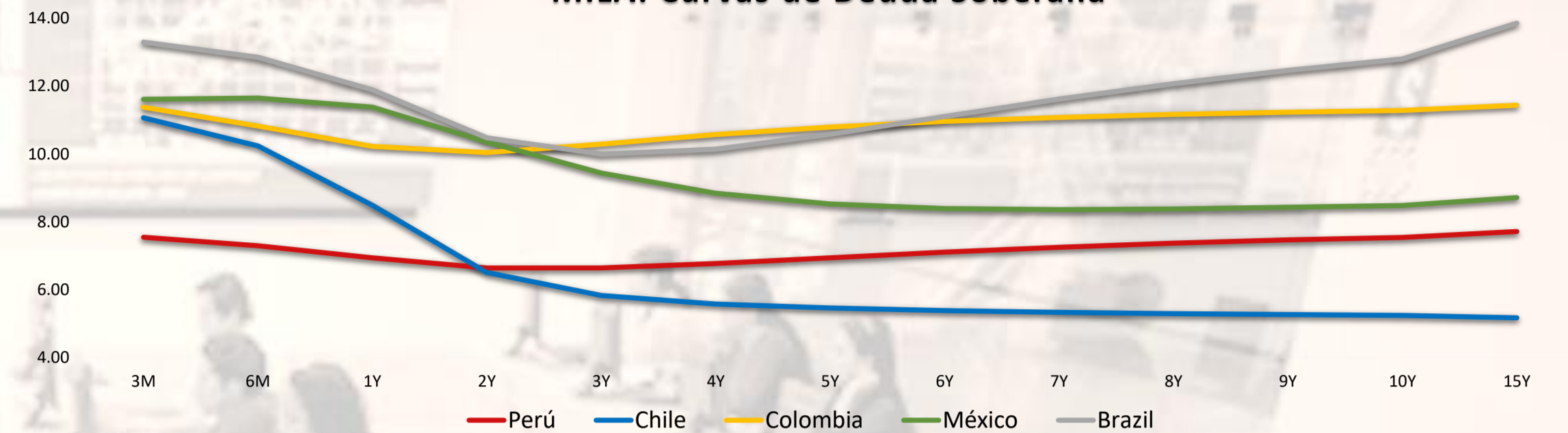
Facultad de Ciencias Empresariales y Económicas
Carrera de Economía
Laboratorio de Mercado de Capitales

MILA: Evolución Intraday



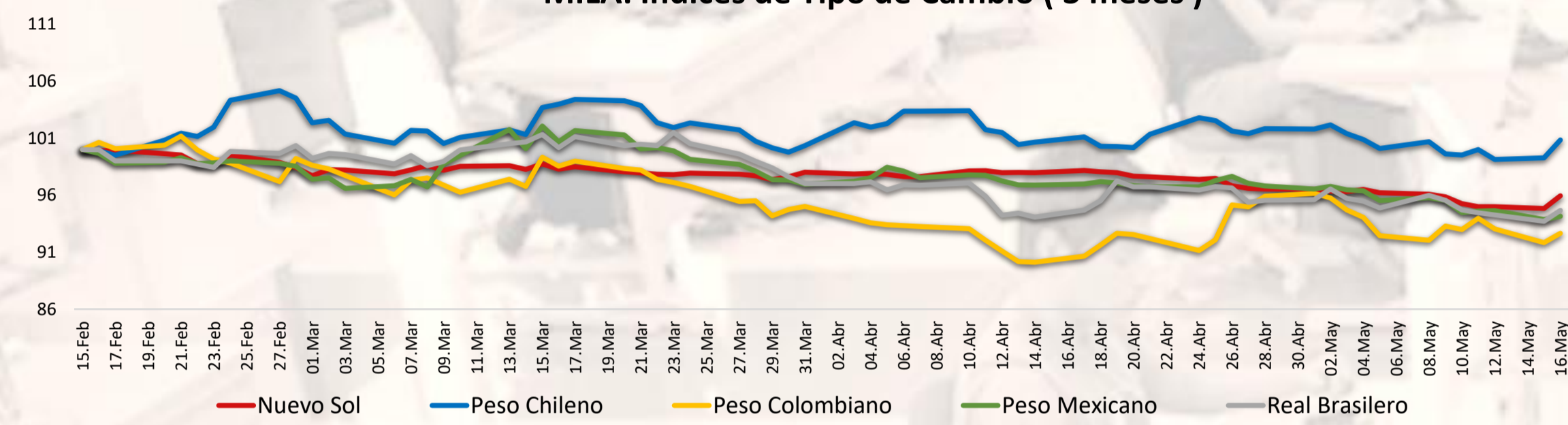
Fuente: Refinitiv

MILA: Curvas de Deuda Soberana



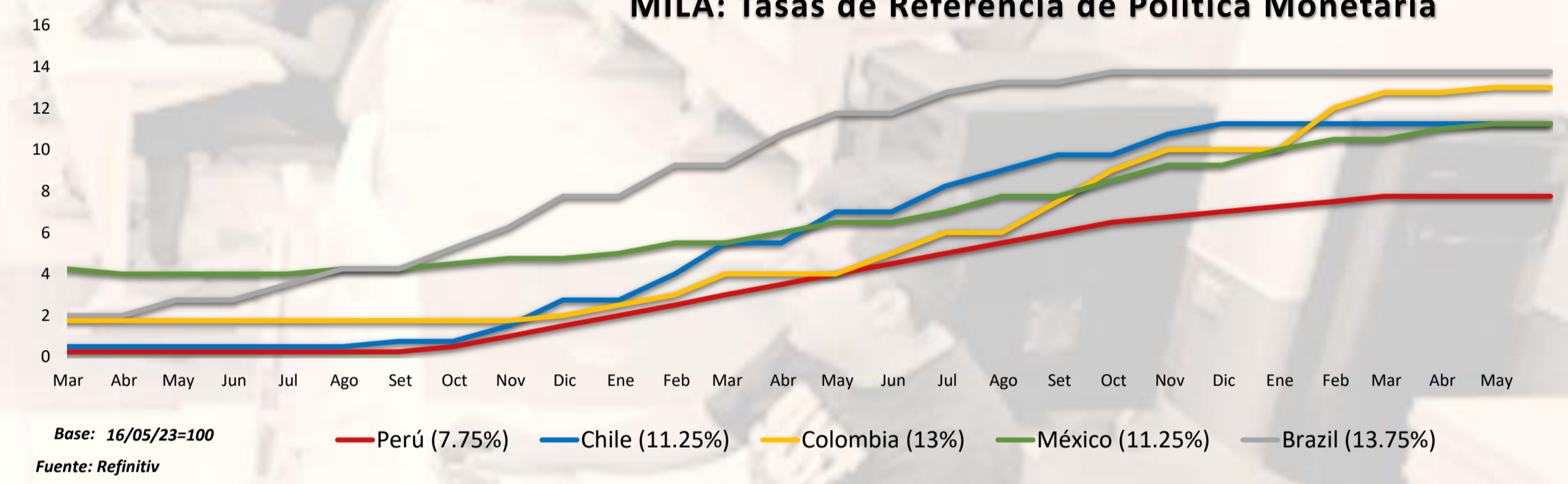
Fuente: Refinitiv

MILA: Índices de Tipo de Cambio (3 meses)



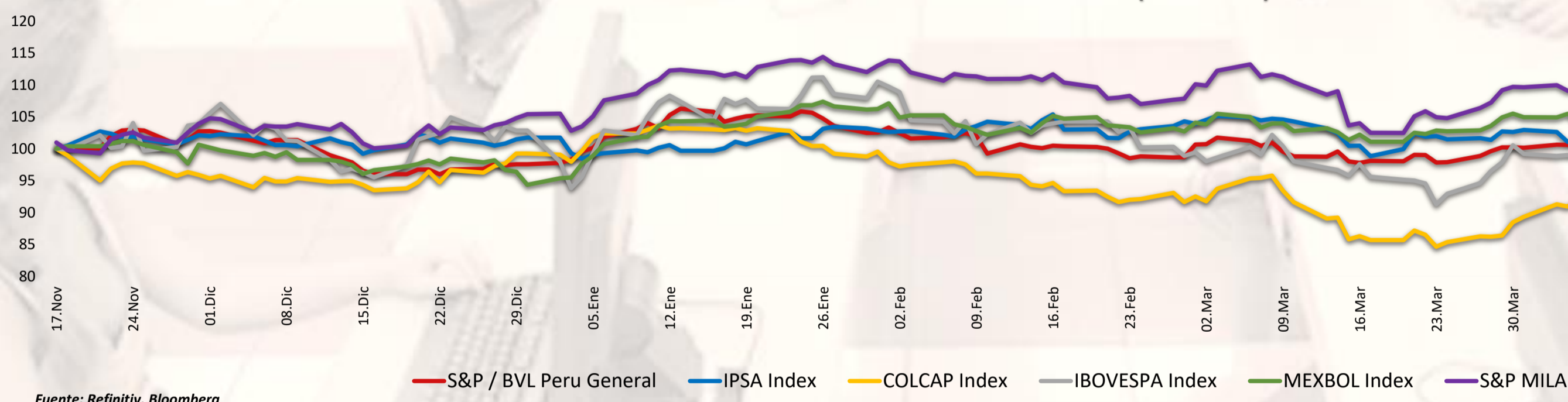
Fuente: Refinitiv

MILA: Tasas de Referencia de Política Monetaria



Base: 16/05/23=100
Fuente: Refinitiv

MILA: Índices Bursátiles (6 meses)

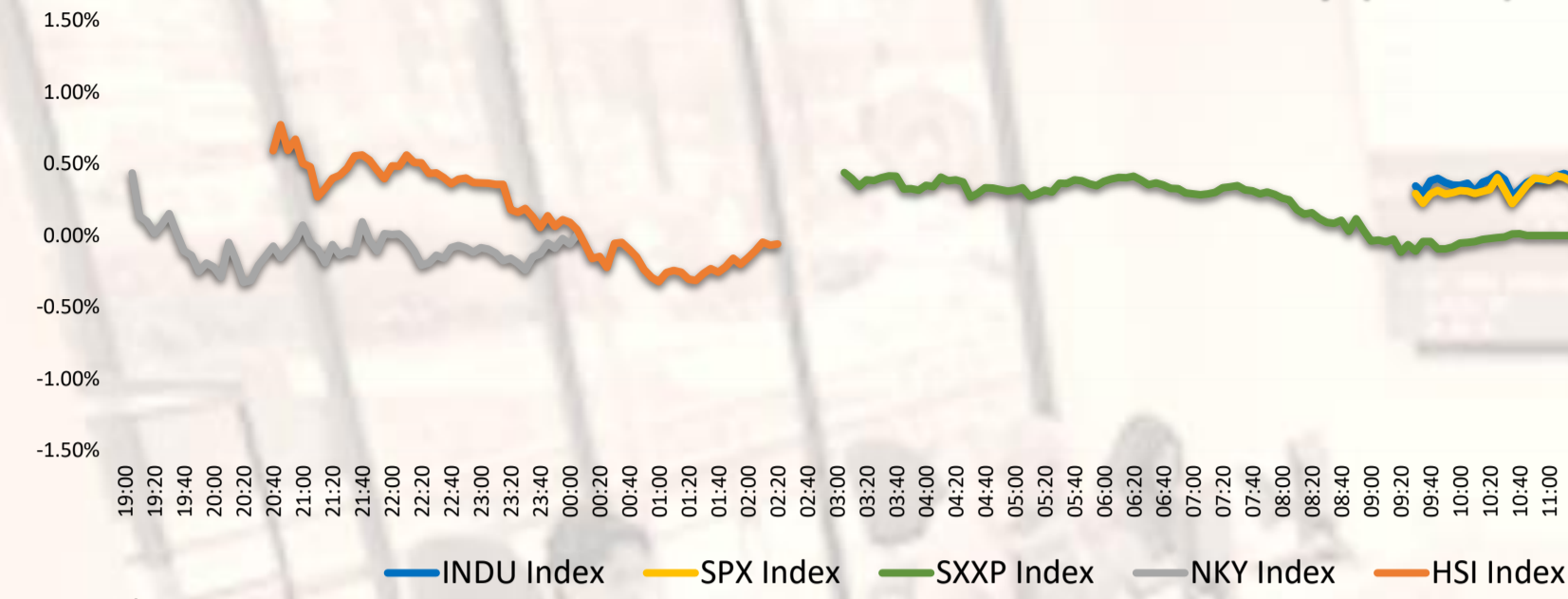


Fuente: Refinitiv, Bloomberg

Coordinador Laboratorio de Mercado de Capitales: MS Javier Penny Pestana
Apoyo: Nadia Contreras, Nikolas Díaz, Joseph Martinez y Marcelo Cossar
email: pulsobursatil@ulima.edu.pe

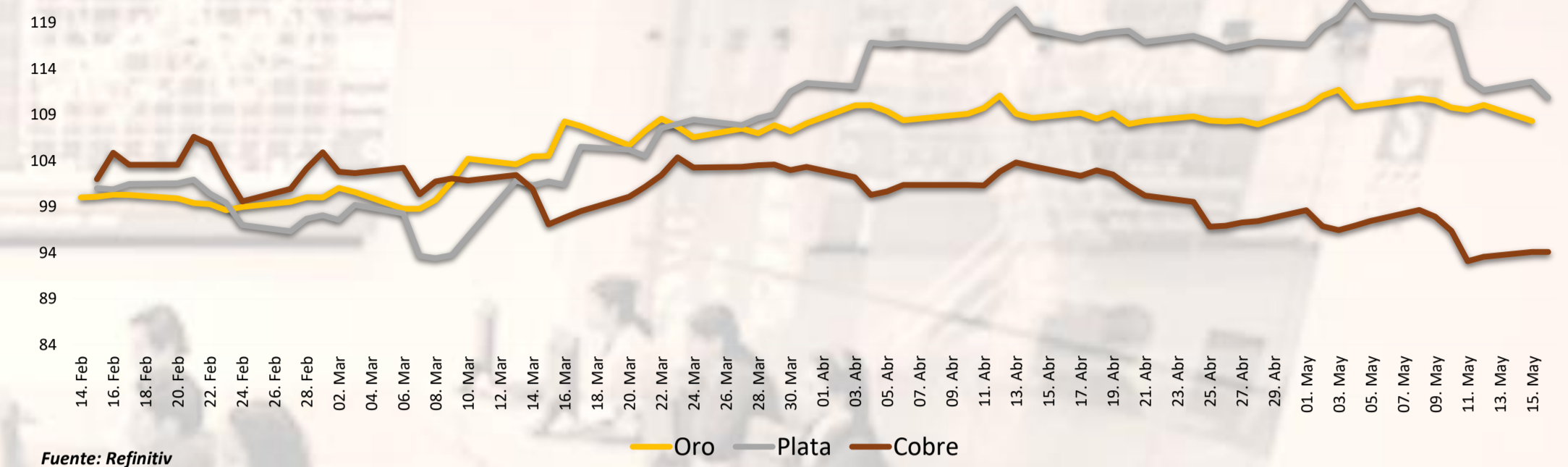
El contenido del presente documento es únicamente informativo. Los datos y opiniones expresados no deben ser interpretados como recomendaciones para la toma de decisiones futuras. Bajo ninguna circunstancia, el Laboratorio de Mercado de Capitales de la Universidad de Lima se hará responsable por el uso de lo expresado en este documento.

Mercado Evolución Intraday (var %)



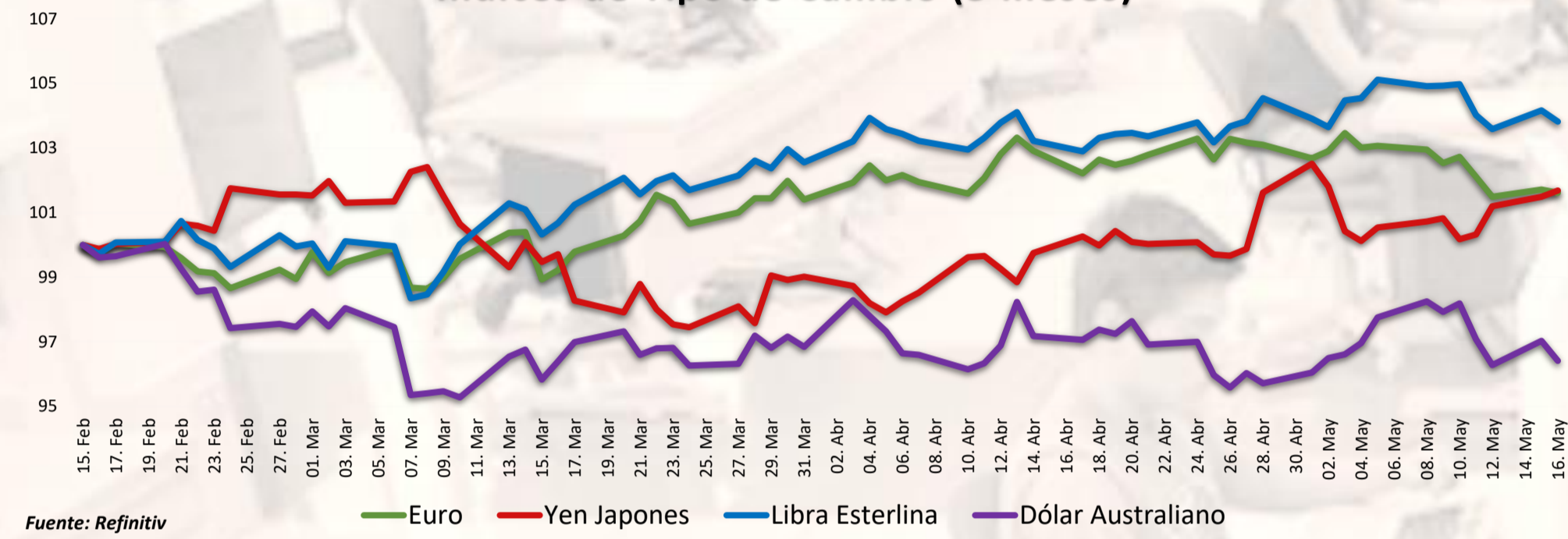
Fuente: Refinitiv, Bloomberg

Índices de Metales principales (3 meses)



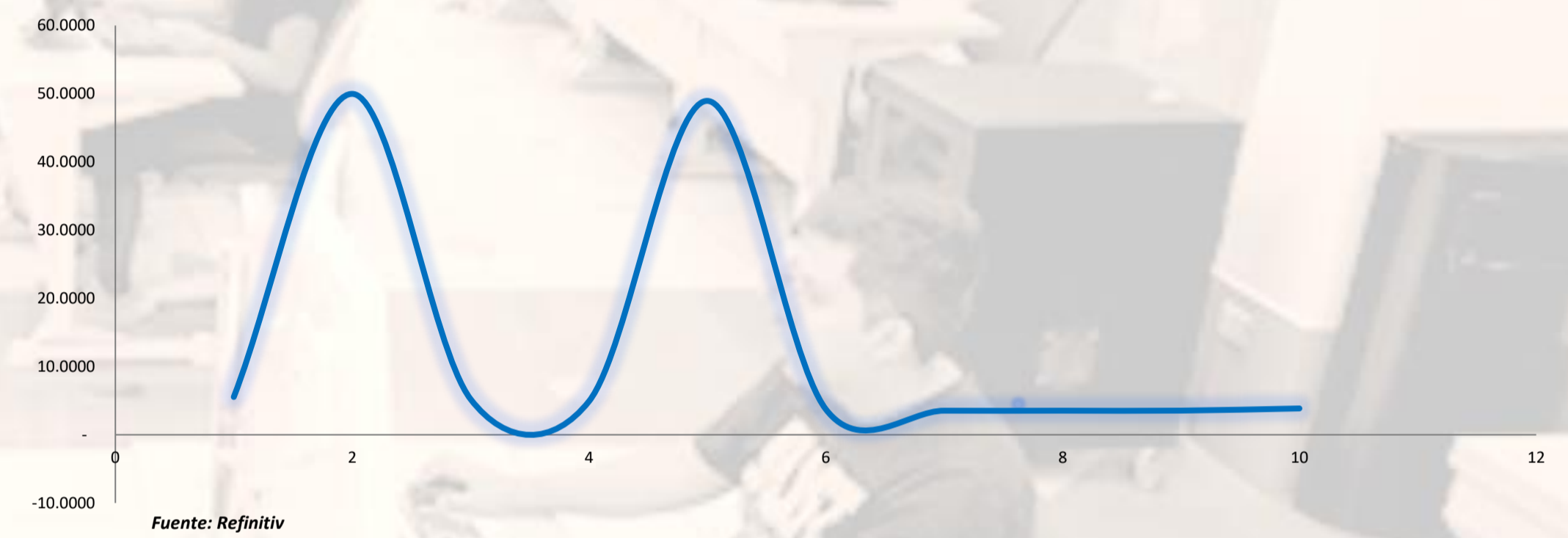
Fuente: Refinitiv

Índices de Tipo de Cambio (3 meses)



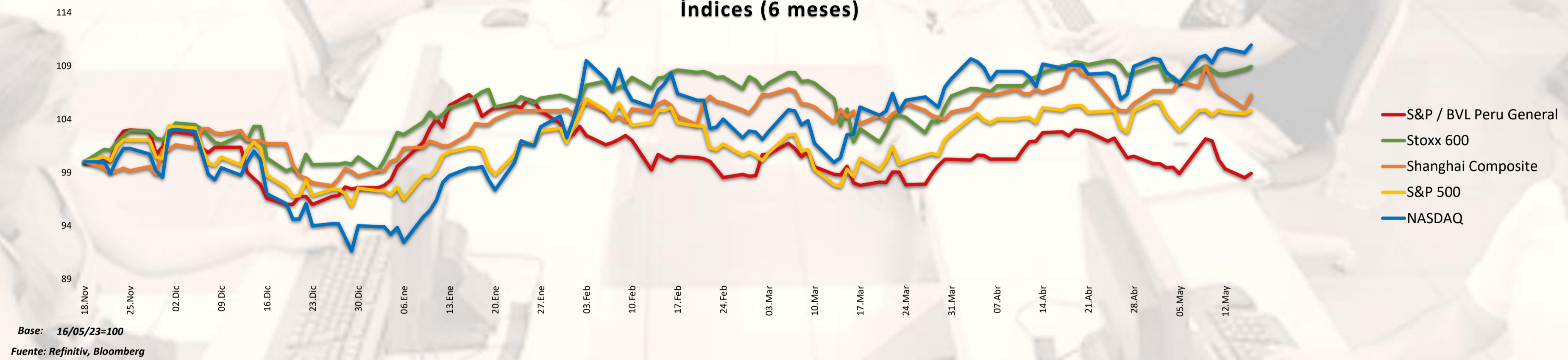
Fuente: Refinitiv

Curva de Rendimiento Bonos Tesoro EEUU (%)



Fuente: Refinitiv

Índices (6 meses)



Base: 16/05/23=100
Fuente: Refinitiv, Bloomberg

Coordinador Laboratorio de Mercado de Capitales: MS Javier Penny Pestana
Apoyo: Nadia Contreras, Nicolás Díaz, Joseph Martinez y Marcelo Cossar
email: pulsobursatil@ulima.edu.pe

RANKING ACCIONES LIMA

Código	Moneda	Precio	1 D*	5 D*	1 M*	YTD*	Frecuencia	Volumen	Beta	Rentabilidad por Dividendos (%)	Precio-Beneficio	Capitalización Bursátil (M US\$)	Sector	Participación Índice
▲ ALICORC1.LM	S/.	6.12	0.33%	1.16%	-0.98%	-5.38%	0.00%	0	0.62	4.56	8.58	1,722,978	Industrial	19.19%
▲ BACKUS11.LM	S/.	25.50	0.00%	1.19%	3.48%	9.46%	90.00%	0	0.41	6.41	94.56	201,354	Industriales	14.76%
▼ BAP	US\$	134.79	-1.71%	-7.31%	3.40%	-0.64%	90.00%	301,661	0.95	4.92	7.20	40,961,126	Diversas	1.11%
▼ BVN	S/.	1.63	-1.21%	-2.40%	9.43%	12.55%	85.00%	0	0.71	7.85	0.00	42,051	Bancos y Financieras	33.21%
▼ CASAGRC1.LM	S/.	1.63	-1.21%	-2.40%	9.43%	12.55%	85.00%	0	0.71	7.85	0.00	42,051	Bancos y Financieras	33.21%
▼ BBVAC1.LM	S/.	1.63	-1.21%	-2.40%	9.43%	12.55%	85.00%	0	0.71	7.85	0.00	42,051	Bancos y Financieras	33.21%
▲ CORAREI1.LM	S/.	1.20	0.00%	-5.51%	-6.53%	-13.87%	80.00%	0	1.06	4.42	0.00	3,652	Industriales	-19.77%
▲ CPAC.K	US\$	5.48	2.24%	2.24%	2.43%	6.17%	90.00%	863	0.50	10.47	18.72	4,689	Industriales	-1.43%
▲ CVERDEC1.LM	US\$	29.10	0.00%	-2.68%	-0.75%	-0.08%	85.00%	0	1.14	2.45	10.14	36,957	Mineras	-12.48%
▼ ENGEPEC1.LM	S/.	4.18	-0.48%	0.82%	14.74%	21.43%	90.00%	0	0.76	9.20	10.82	7,054	Servicios Públicos	81.30%
▲ ENDISPC1.LM	US\$	29.10	0.00%	-2.68%	-0.75%	-0.08%	85.00%	0	1.14	2.45	10.14	36,957	Mineras	-12.48%
▼ FERREY1.LM	S/.	2.09	-0.95%	-1.88%	3.10%	-1.46%	90.00%	0	0.99	11.30	0.00	100,403	Diversas	3.97%
▲ AENZAC1.LM	S/.	0.57	0.00%	-6.56%	-10.94%	-31.33%	65.00%	0	0.73	0.00	0.00	1,084	Diversas	-52.93%
▼ IFS	US\$	22.05	-3.08%	-3.59%	-4.75%	-6.17%	90.00%	37,428	1.06	5.19	5.27	829,928	Diversas	-10.51%
▲ INRETC1.LM	US\$	32.10	0.00%	3.55%	-1.08%	-0.22%	80.00%	0	0.74	2.58	13.06	17,655	Diversas	-4.36%
▲ LUSUR1.LM	S/.	14.62	0.00%	0.83%	0.83%	-2.86%	85.00%	0	0.57	2.39	0.00	53,141	Servicios Públicos	-1.46%
▼ MINSUR1.LM	S/.	3.64	-0.82%	-0.27%	-4.21%	2.54%	90.00%	0	1.10	10.26	19.36	9,882	Mineras	-25.18%
▼ SCCO.K	US\$	69.44	-3.96%	-12.15%	-7.18%	14.99%	90.00%	1,618,507	1.25	5.53	17.66	113,074,222	Mineras	27.74%
▲ SIDER1.LM	S/.	1.33	0.00%	0.00%	-12.59%	-17.39%	85.00%	0	0.90	40.46	0.00	2,791	Industriales	-3.09%
▲ UNACEMC1.LM	S/.	2.77	0.00%	1.82%	8.74%	9.58%	10.00%	0	0.02	3.45	0.00	396	Diversas	10.95%
▲ VOLCABC1.LM	S/.	2.77	0.00%	1.82%	8.74%	9.58%	10.00%	0	0.02	3.45	0.00	396	Diversas	10.95%
▼ BROCAL1.LM	S/.	1.63	-1.21%	-2.40%	9.43%	12.55%	85.00%	0	0.71	7.85	0.00	42,051	Bancos y Financieras	33.21%
▼ CORAREC1.LM	S/.	1.63	-1.21%	-2.40%	9.43%	12.55%	85.00%	0	0.71	7.85	0.00	42,051	Bancos y Financieras	33.21%
▼ ENGIEC1.LM	S/.	3.90	-75.92%	-74.98%	-69.98%	-42.70%	90.00%	0	0.90	1.79	5.68	4,745	Servicios Públicos	331.62%
▲ GBVLAC1.LM	S/.	0.57	0.00%	-6.56%	-10.94%	-31.33%	65.00%	0	0.73	0.00	0.00	1,084	Diversas	-52.93%

Cantidad de Acciones: 25
 Fuente: Refinitiv
 Subieron
 Bajaron
 Mantuvieron

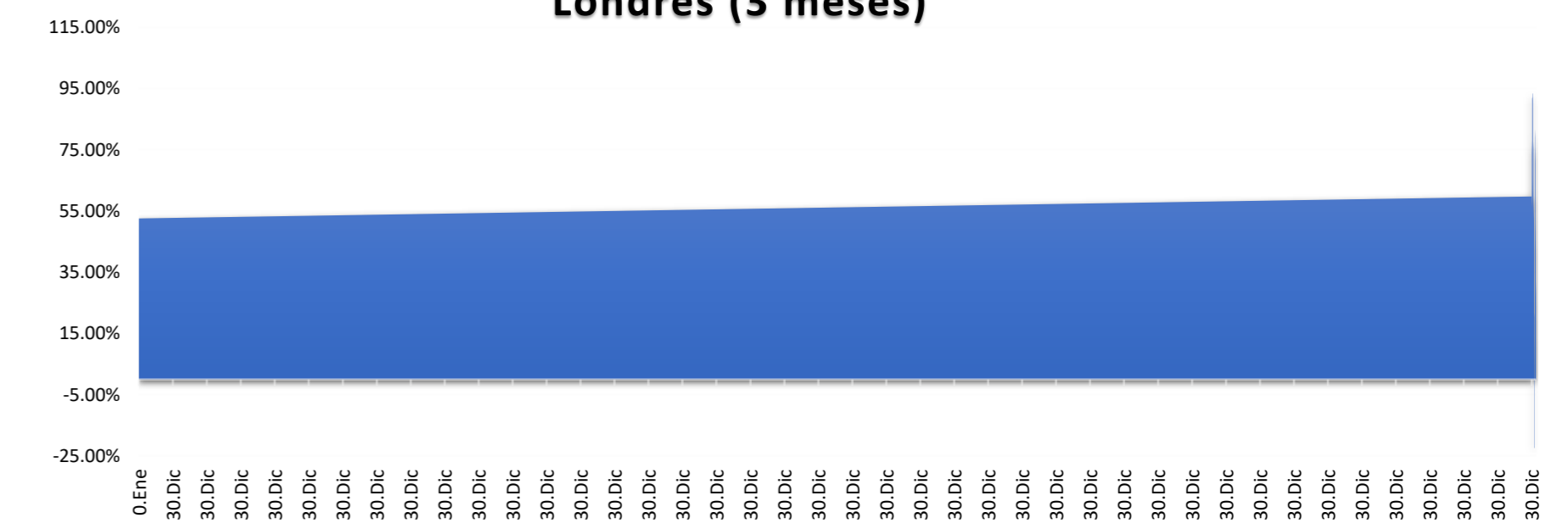
** PER se utiliza en el mercado de valores y moneda original del instrumento
 *Leyenda: Variación 1D: 1 Día; 5D: 5 Días; 1M: 1 Mes; YTD: Var. % a la fecha

Índices Sectoriales

	Cierre	1 D*	5 D*	1 M*	YTD*	Beta
S&P/BVL Consumer Index	1,222.89	0.61%	2.19%	-0.86%	-0.86%	0.31
S&P/BVL Industrial Index	232.27	-0.62%	-1.14%	0.40%	-5.90%	0.33
S&P/BVL Financials Index	929.74	-0.41%	-6.38%	1.47%	-2.73%	1.39
S&P/BVL Construction Index	223.80	-0.47%	-0.80%	0.43%	-7.94%	0.29
S&P/BVL Public Services Index	1,201.73	4.28%	6.65%	7.37%	55.23%	0.28
S&P/BVL Mining Index	425.05	1.08%	-5.81%	-11.63%	7.59%	1.58
S&P/BVL Electric Utilities Index	1,173.19	4.28%	6.65%	7.37%	55.23%	0.28

*Leyenda: Variación 1D: 1 Día; 5D: 5 Días; 1M: 1 Mes; YTD: Var. % a la fecha
 Fuente: Refinitiv

Correlación Rend. Índice Minero vs Índice de Metales de Londres (3 meses)



Fuente: Refinitiv

Rating Crédito Latinoamérica

CLASIFICACIONES DE RIESGO

País	Moody/s	Fitch	S&P
Perú	A	BBB	BBB
México	Baa2	BBB-	BBB
Venezuela	WR	WD	NR
Brazil	BBB	BB-	BB-
Colombia	BB+	BB+	BB+
Chile	AA-	A-	A
Argentina	CCC	WD	CCC-
Panamá	WD	BBB-	BBB

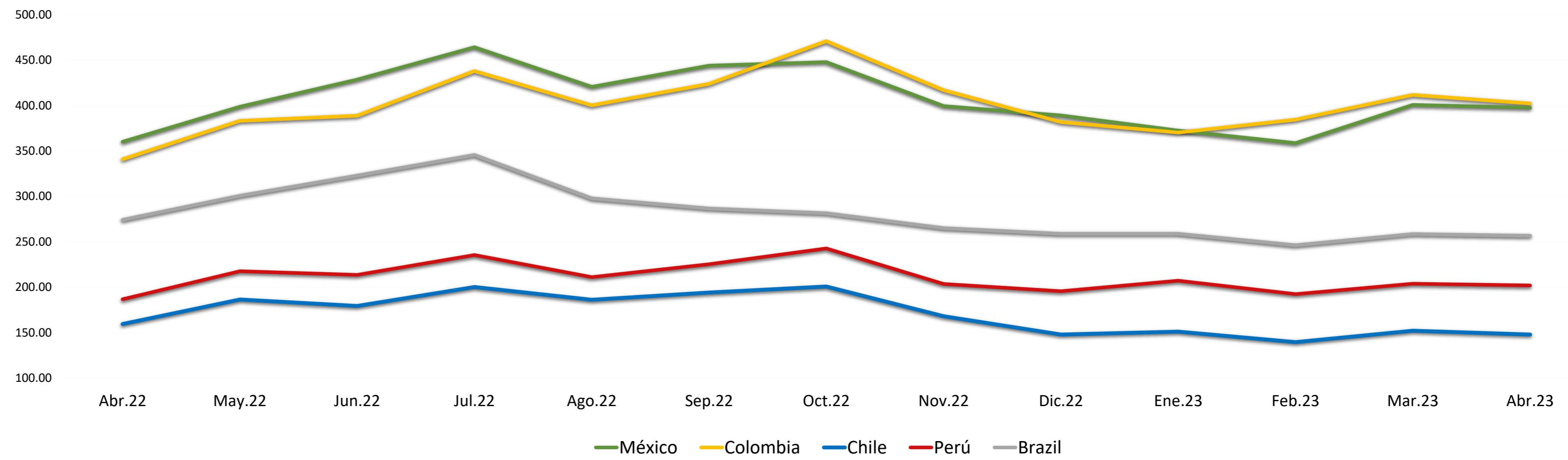
Fuente: Refinitiv, Bloomberg

Leyenda

	Moody/s	Fitch	S&P
Prime	Aaa	AAA	AAA
Alto Grado	Aa1	AA+	AA+
	Aa2	AA	AA
	Aa3	AA-	AA-
Grado Alto Medio	A1	A+	A+
	A2	A	A
	A3	A-	A-
Grado Bajo Medio	Baa1	BBB+	BBB+
	Baa2	BBB	BBB
	Baa3	BBB-	BBB-
Sin Grado de Inversión Especulativo	Ba1	BB+	BB+
	Ba2	BB	BB
	Ba3	BB-	BB-
Altamente Especulativo	B1	B+	B+
	B2	B	B
	B3	B-	B-
Riesgo Sustancial	Caa1	CCC+	CCC+
	Caa2	CCC	CCC
	Caa3	CCC-	CCC-
Extremadamente Especulativo	Ca	CC	CC
		C	C
Poca esperanzas de Pago		RD	SD
Impago	C	DDD	D
		DD	
		D	
Sin Clasificar	WR		NR

Fuente: Refinitiv, Bloomberg

Riesgo País Latinoamérica (pbs)



	Abr.22	May.22	Jun.22	Jul.22	Ago.22	Sep.22	Oct.22	Nov.22	Dic.22	Ene.23	Feb.23	Mar.23	Abr.23
Perú	186.67	217.55	213.55	235.43	211.00	225.27	242.59	203.41	195.50	207.05	192.30	203.83	201.90
Brazil	274.06	300.64	322.82	345.48	297.70	286.56	281.30	264.90	258.64	258.64	246.10	258.35	256.55
Chile	159.44	186.32	179.32	200.10	186.09	194.05	200.69	167.97	147.82	150.95	139.45	152.00	147.75
Colombia	340.78	383.05	388.73	437.86	400.26	423.83	470.84	416.81	381.77	370.18	384.35	411.61	402.15
México	360.00	398.59	428.41	464.10	420.43	443.77	447.72	399.31	389.00	372.32	358.55	400.70	397.60

Fuente: BCRP

Coordinador Laboratorio de Mercado de Capitales: MS Javier Penny Pestana
 Apoyo: Nadia Contreras, Nikolas Díaz, Joseph Martinez y Marcelo Cossar
 email: pulsoBursatil@ulima.edu.pe