

## LATAM

Lima, August 22, 2023

Peru: The LSE General Index ended today's session with a positive result of +0.37%. The index maintains a positive accumulated annual trend of +7.56% in local currency and a positive accumulated trend of +9.96% in dollar-adjusted currency. The S&P/BVL Peru SEL varied +0.18% while the S&P/BVL LIMA 25 varied +0.30%. The spot PEN reached S/.3.7231. Headline: Falabella appoints Alex Zimmermann as new country manager for Peru.

Chile: The IPSA index ended the day with a positive return of +0.58%. The most benefited sectors of the day were Non Basic Consumer Products (+2.65%) and Materials (+2.49%). The best performing stocks were SACI Falabella (+2.89%) and Empresas CMPC SA (+2.68%). Headline: Chile's misery index falls for the sixth month thanks to inflation control.

Colombia: The COLCAP index ended the session with a negative return of -1.49%. The least benefited sectors of the day were Utilities (-2.34%) and Materials (-2.11%). The worst performing stocks were BanColombia SA (-5.04%) and Interconexión Eléctrica SA ESP (-4.23%). Headline: Government proposes meat subsidies to help families.

Mexico: The IPC index closed the day in positive territory of +0.03%. The sectors that benefited the most during the day were Real Estate (+1.91%) and Non-Basic Consumer Products (+1.61%). The best performing stocks were Industrias Peñoles SAB de CV (+4.59%) and Alsea SAB de CV (+2.31%). Headline: Living Wage in Mexico: This is the initiative to earn 12,400 pesos per month as a minimum.

Brazil: The IBOVESPA index closed the day in positive territory +1.51%. The day's top gainers were Non-Basic Consumer Products (+3.10%) and Industrials (+2.45%). The best performing stocks were IRB-Brasil Resseguros SA (+9.14%) and Vibra Energia SA (+7.61%). Headline: Government leader says MP minimum wage will be voted this Wednesday in the House, but without taxing funds abroad.

### Equity

Largest Gains	Exchange	Curr.	Price	▲ %
INDUSTRIAS PENOL	MEX	MXN	228.78	4.59%
FALABELLA SA	SGO	CLP	2,208.00	2.89%
INFRAESTRUCTURA	SAO	BRL	7.90	2.86%
CMPC	SGO	CLP	1,641.90	2.68%
ENEL AMERICAS SA	SGO	CLP	100.48	1.96%

Source: Refinitiv

Largest Losses	Exchange	Curr.	Price	▼ %
GRUPO TELE MEX	MEX	MXN	15	-2.24%
AES GENER SA	SGO	CLP	79	-2.08%
GRUPO AERC MEX	MEX	MXN	183	-1.42%
TF ADMINISTRADOR	MEX	MXN	32	-1.39%
BANCO DE CI SGO	SGO	CLP	92	-1.28%

Source: Refinitiv

Per Turnover	Exchange	Amount (US\$)
WALMART DE MEXIC	MEX	65,339.87
ARCA CONTINENTAL	MEX	56,575.71
AMERICA MOVIL-L	NYQ	48,868.09
CEMEX SAB-CPO	MEX	20,793.89
GRUPO F BANORT-O	MEX	18,795.65

Source: Refinitiv

Per Volume	Exchange	Volume
BANCO SANTANDER	SGO	117,830,383.00
ENEL CHILE SA	SGO	84,158,121.00
BANCO DE CHILE	SGO	74,266,567.00
ENEL AMERICAS SA	SGO	46,040,744.00
CEMEX SAB-CPO	MEX	25,851,220.00

Source: Refinitiv

### ETFs

	Curr.	Close	1 D	5 D	1 M	YTD	Exchange
ISHARES MSCI ALL PERU CAPPED	USD	31.54	0.80%	-1.13%	0.62%	-14.29%	PCQ
ISHARES MSCI CHILE CAPPED	USD	28.51	0.71%	-1.55%	-5.09%	-2.13%	BTQ
GLOBAL X MSCI COLOMBIA	USD	20.33	-2.14%	-2.68%	-4.54%	-41.82%	PCQ
ISHARES MSCI MEXICO CAPPED	USD	159.75	1.01%	1.21%	-0.38%	14.70%	LSE
ISHARES MSCI EMERGING MARKETS	USD	38.41	-0.21%	-1.31%	-3.54%	-16.23%	PCQ
VANGUARD FTSE EMERGING MARKETS	CAD	32.44	-0.03%	-0.49%	-0.43%	-8.13%	TOR
ISHARES CORE MSCI EMERGING MARKETS	USD	48.09	-0.19%	-1.11%	-3.20%	-14.81%	PCQ
ISHARES JP MORGAN EMERGING MARKETS BONDS	USD	83.98	0.27%	-0.52%	-1.77%	-13.00%	NMQ
MORGAN STANLEY EMERGING MARKETS DOMESTIC	USD	4.64	-0.22%	-1.69%	-3.13%	-3.93%	NYQ
ISHARES MSCI BRAZIL ETF	USD	30.89	2.22%	0.88%	-2.56%	-19.39%	PCQ

Source: Refinitiv

### Main Indexes

	Close	1 D	5 D	1 M	YTD	Market Cap. (US\$ Mill.)
▲ IPSA (Chile)	6,158.74	0.59%	-0.93%	2.72%	24.95%	118,346
▲ IGPA (Chile)	31,334.52	0.43%	-0.96%	1.45%	24.52%	144,475
▼ COLSC (Colombia)	825.11	-0.78%	-1.84%	-3.26%	-20.33%	
▼ COLCAP (Colombia)	1,115.74	-1.49%	-1.27%	-2.80%	-31.72%	60,734
▲ S&P/BVL LIMA (Peru)	22,941.84	0.37%	-0.52%	1.70%	-8.08%	
▲ S&P/BVL SEL (Peru)	595.12	0.29%	-0.37%	1.62%	-8.74%	93,891
▲ S&P/BVL LIMA 25	30,816.05	0.42%	-0.82%	1.04%	-15.15%	109,273
▲ IPC (México)	53,127.93	0.03%	-0.82%	-1.87%	-4.36%	
▲ S&P MILA 40	495.24	0.08%	-1.38%	-1.43%	-13.06%	228,668
▲ IBOVESPA (Brazil)	23,517.17	2.4%	1.0%	-2.6%	-8.0%	

\*Legend: Variation 1D: 1 day; 5D: 5 days; 1M: 1 Month; YTD: Var% to date

Source: Refinitiv, Bloomberg

671517.7929

### Currency

	Price	1 D*	5 D*	1 M*	YTD*
▲ Sol (PEN)	3.72	0.20%	0.53%	3.10%	0.61%
▼ Peso Chileno (CLP)	869.55	-0.06%	0.81%	6.70%	10.50%
▲ Peso Colombiano (COP)	4,109.70	0.10%	0.37%	-1.49%	10.01%
▼ Peso Mexicano (MXN)	16.90	-0.69%	-1.39%	-0.80%	-15.46%
▼ Real Brasileiro (BRL)	4.94	-0.82%	-0.92%	1.75%	6.19%

\*Legend: Variation 1D: 1 day; 5D: 5 days; 1M: 1 Month; YTD: Var% to date

Source: Refinitiv

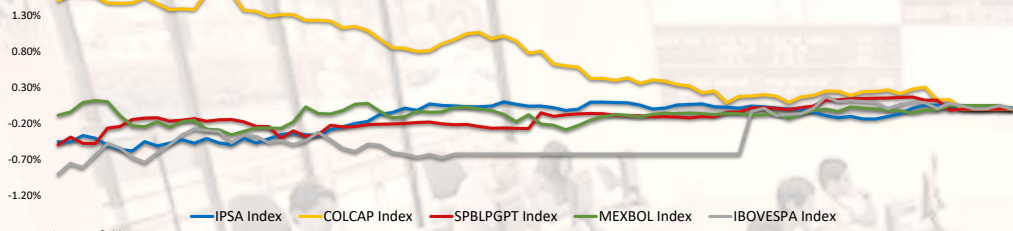
### Fixed Income

Instrument	Currency	Price	Bid Yield (%)	Ask Yield (%)	Duration
PERU 7.35 07/21/25	USD	5.80	102.75	552.9%	1.81
PERU 4.125 08/25/27	USD	5.43	95.35	536.2%	3.65
PERU 8.75 11/21/33	USD	5.90	121.64	581.5%	7.18
PERU 6.55 03/14/37	USD	5.84	106.32	578.2%	8.69
PERU 5.625 11/18/2050	USD	5.95	95.61	589.4%	13.77
CHILE 2.45 01/31/31	USD	5.24	82.98	519.2%	6.76
CHILE 3.125 01/21/26	USD	5.40	94.93	534.9%	2.34
CHILE 3.625 10/30/42	USD	5.98	73.35	592.8%	12.79
COLOM 11.85 03/09/28	USD	7.63	115.95	755.7%	3.55
COLOM 10.375 01/28/33	USD	8.35	113.02	792.8%	6.42
COLOM 7.375 09/18/37	USD	8.05	94.37	792.6%	8.56
COLOM 6.125 01/18/41	USD	8.29	80.25	803.5%	10.11
MEX 4 10/02/23	MXV	4.77	86.77	475.0%	7.42
MEX5.55 01/45	USD	6.46	89.52	641.0%	12.22

Source: Refinitiv

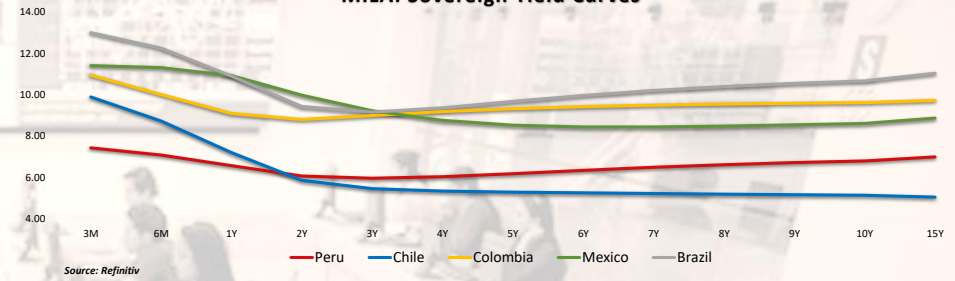
Capital Market Laboratory Coordinator: MS Javier Penny Pestana  
Collaboration: Nadia Contreras, Nikolas Díaz, Joseph Martinez y Marcelo Cossar  
email: pulsobursatil@ulima.edu.pe

**MILA: Intraday Evolution**



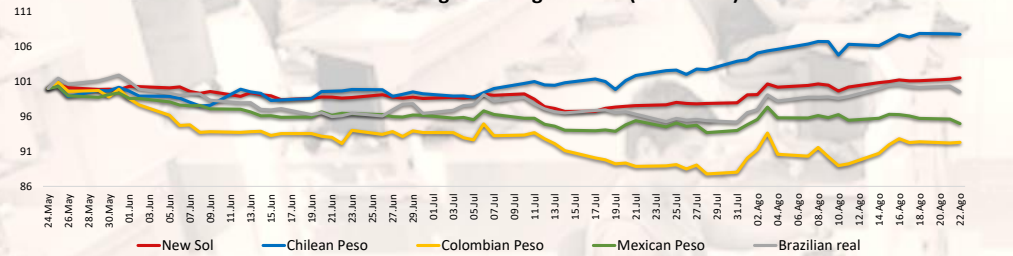
Source: Refinitiv

**MILA: Sovereign Yield Curves**



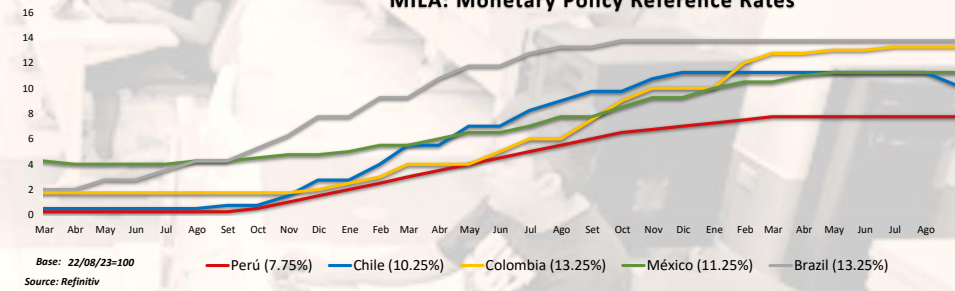
Source: Refinitiv

**MILA: Foreign Exchange Indices (3 months)**



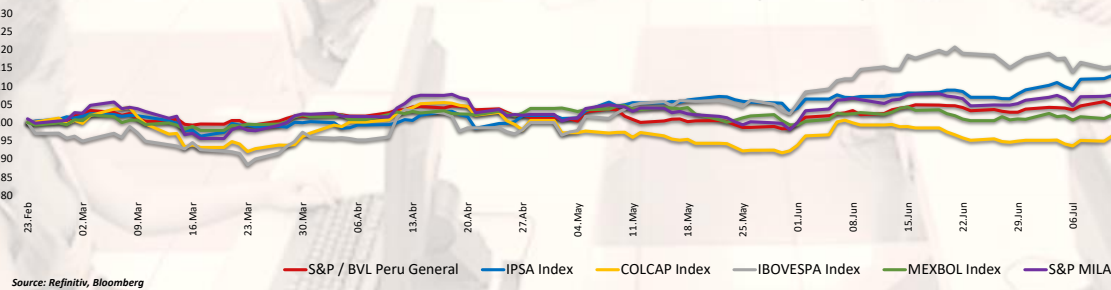
Source: Refinitiv

**MILA: Monetary Policy Reference Rates**



Base: 22/08/23=100  
Source: Refinitiv

**MILA: Stock Indices (6 months)**



Source: Refinitiv, Bloomberg

Capital Market Laboratory Coordinator: MS Javier Penny Pestana  
Collaboration: Nadia Contreras, Níkolás Díaz, Joseph Martínez y Marcelo Cossar  
email: pulsobursatil@ulima.edu.pe

## WORLD

### United States:

The U.S. market closed with mixed returns as attention turned to major technology companies and Federal Reserve Chairman Jerome Powell's upcoming speech at the Jackson Hole Economic Policy Symposium on Friday. The DOW JONES ended with losses, pressured by banks after S&P Global Ratings joined Moody's Investors Service and downgraded some U.S. banks due to a difficult economic environment. However, companies were more optimistic about local business conditions and the index of future local business conditions also increased. The S&P 500 index also ended with negative returns, in a context where many companies continued to report reductions in order backlogs and supplier lead times. In addition, the average growth rates of prices paid and received declined, and the growth rate of prices paid was below companies' annual forecasts. Finally, the NASDAQ index ended the day higher, where Nvidia shares initially rose to an all-time high, but then fell more than 2% in anticipation of its upcoming earnings report. In addition, Macy's shares fell due to lower sales and profit expectations; while Dick's Sporting Goods shares also fell after lowering its full-year profit forecast. Thus, DOW JONES -0.51%, S&P 500 -0.28%, NASDAQ +0.06% with the market having positive returns.

### Europe:

Major European indices ended the session with positive returns. The pan-European STOXX 600 index closed higher as chipmakers led a rally in tech stocks ahead of Nvidia earnings, while Ubisoft touched a three-week high on plans by "call of duty" maker Activision to sell broadcast rights. Among individual stocks, Italian cable manufacturer Prysmian gained 4% on being selected as the "preferred bidder" for three projects in Germany worth €4.5 million. The UK market, reflected in the FTSE 100, ended with a positive margin benefiting from an improvement in global risk sentiment amid rising technology stocks in the US. Meanwhile, new data showed that the UK posted a smaller-than-expected budget deficit in July, raising hopes for lower taxes this year. Also, factory orders fell less than expected bringing hope for a more relaxed BoE tightening. Similarly, the German market, reflected in the DAX index closed in positive territory, boosted by positive sentiment in the tech-heavy Nasdaq index and gains in Chinese bourses. On the corporate front, real estate company Vonovia recovered its losses from the previous day and rose 2.75% to €19.79. The French market closed with a positive margin, as European equity markets followed the positive sentiment triggered by the upcoming release of Nvidia's quarterly earnings report in the US. Investors are betting on technology and growth stocks, as the market expects Nvidia to hit new records this week and after French gaming firm Ubisoft unexpectedly settled an exclusive deal on the rights to distribute games from game holding company Activision Blizzard, amid the latter's acquisition by Microsoft. Thus, FTSE 100 +0.18%; CAC 40 +0.59%; DAX +0.66%; STOXX 600 +0.68% ended with positive results.

### Asia:

The main Asian indices closed with positive performances. The Chinese market ended higher, driven by the rebound in technology stocks, led by Zhongji Innolight (6.9%), Foxconn Industrial (10%), Inspur Electronic (5.9%), Kunlun Tech (3.6%) and Inessa Intelligent Tech (10%). On the other hand, the Hang Seng index closed with gains, in a context where Hong Kong's inflation rate slowed down more than expected in July, standing at 1.8%, compared to the 2% expected by economists polled by Reuters. The figure is also down from 1.9% in June. The South Korean market ended on a positive note, with the consumer confidence index falling to 103.1 from 103.2 in the previous month. A reading above 100 means that optimists outnumber pessimists in the survey, and vice versa. The Japanese market closed in positive territory, where SoftBank Group rose 1.4% after its Arm chip unit applied overnight for listing on the Nasdaq. The Australian market ended with gains. Where it followed overnight the rally in the technology sector on Wall Street, where the most relevant were Altium (25.3%), Megaport (17%), Wisetech Global (2.6%), Xero (3.2%) and Hub24 Ltd (11.4%). Thus, NIKKEI +0.92%; HANG SENG +0.95%; CSI 300 +0.77%; S&P/ASX 200 +0.09%; KOSPI +0.28%, SHANGHAI COMPOSITE +0.88% ended with positive performances.

## ETFs

	Curr.	Close	1 D	5 D	1 M	YTD	Exchange
SPDR S&P 500 ETF TRUST	USD	438.15	-0.27%	-1.07%	-0.97%	-2.86%	PCQ
ISHARES MSCI EMERGING MARKETS ETF	USD	38.41	-0.21%	-1.31%	-3.54%	-16.23%	PCQ
ISHARES IBOXX \$ HIGH YIELD CORPORATE BOND ETF	USD	74.11	0.05%	-0.63%	-0.68%	-9.07%	PCQ
FINANCIAL SELECT SECTOR SPDR FUND	USD	33.62	-0.94%	-1.72%	-1.52%	-11.08%	PCQ
VANECK GOLD MINERS ETF	USD	27.95	0.87%	-0.92%	-7.57%	-26.99%	PCQ
ISHARES RUSSELL 2000 ETF	USD	183.83	-0.30%	-2.29%	-3.15%	-9.44%	PCQ
SPDR GOLD SHARES	USD	176.10	0.16%	-0.28%	-1.87%	-1.75%	PCQ
ISHARES 20+ YEAR TREASURY BOND ETF	USD	93.23	0.77%	-1.43%	-6.51%	-27.44%	NMQ
INVESTCO QQQ TRUST SERIES 1	USD	363.38	-0.14%	-0.83%	-1.30%	0.63%	NMQ
ISHARES BIOTECHNOLOGY ETF	USD	127.29	0.05%	-0.56%	0.45%	-4.06%	NMQ
ENERGY SELECT SECTOR SPDR FUND	USD	87.57	-0.77%	-0.10%	5.24%	15.30%	PCQ
PROSHARES ULTRA VIX ST FUTURES ETF	USD	18.42	0.49%	2.11%	-3.86%	-86.07%	BTQ
UNITED STATES OIL ETF	USD	72.28	-0.41%	-0.47%	7.83%	-3.37%	PCQ
ISHARES MSCI BRAZIL ETF	USD	30.89	2.22%	0.88%	-2.56%	-19.39%	PCQ
SPDR S&P OIL & GAS EXP & PRODUCTION ETF	USD	146.54	-1.02%	1.06%	10.16%	8.00%	PCQ
UTILITIES SELECT SECTOR SPDR FUND	USD	63.27	0.29%	0.40%	-4.02%	-16.08%	PCQ
ISHARES US REAL ESTATE ETF	USD	82.67	0.33%	-2.13%	-6.25%	-24.34%	PCQ
SPDR S&P BIOTECH ETF	USD	78.37	-0.03%	-1.82%	-6.51%	-15.96%	PCQ
ISHARES IBOXX \$ INVESTMENT GRADE CORP BOND ETF	USD	103.80	0.31%	-0.63%	-2.62%	-13.05%	PCQ
ISHARES JP MORGAN USD EMERGING MARKETS BOND ETF	USD	83.98	0.27%	-0.52%	-1.77%	-13.00%	NMQ
REAL ESTATE SELECT SECT SPDR FUND	USD	35.99	0.31%	-2.23%	-6.15%	-26.80%	PCQ
ISHARES CHINA LARGE-CAP ETF	USD	26.14	-0.04%	-3.93%	-4.39%	-21.71%	PCQ
CONSUMER STAPLES SPDR FUND	USD	72.12	-0.57%	-2.05%	-1.94%	-5.70%	PCQ
VANECK JUNIOR GOLD MINERS ETF	USD	34.08	1.07%	0.12%	-6.01%	-26.85%	PCQ
SPDR BLOOMBERG HIGH YIELD BOND ETF	USD	90.92	0.06%	-0.60%	-0.61%	-10.52%	PCQ
VANGUARD REAL ESTATE INDEX FUND ETF	USD	79.93	0.29%	-2.35%	-6.28%	-26.94%	PCQ
DIREXION DAILY GOLD MINERS INDEX BULL 2X SHARES	USD	29.26	1.49%	-2.27%	-16.45%	-58.38%	PCQ
PROSHARES ULTRASHORT 20+ YEAR TREASURY	USD	35.81	-1.38%	3.14%	14.41%	65.94%	PCQ
ISHARES MSCI EAFE ETF	USD	69.97	-0.19%	-1.34%	-2.47%	-4.91%	PCQ
ISHARES PREFERRED AND INCOME SECURITIES ETF	USD	30.00	0.03%	-1.54%	-2.68%	-15.92%	NMQ
WISDOMTREE JAPAN HEDGED EQUITY ETF	USD	83.32	0.42%	-0.33%	2.62%	30.47%	PCQ
GRAYSCALE BITCOIN TRUST (BTC)	USD	17.00	-1.22%	-13.53%	-14.70%	-47.09%	PNK

Source: Refinitiv

## Main Indexes

	Close	1 D	5 D	1 M	YTD	Market Cap. (US\$ Mill.)
▼ Dow Jones (E EUU)	53.79	-0.70%	0.49%	0.69%	-15.28%	147,876
▼ Standard & Poor's 500 (E EUU)	4,387.55	-0.28%	-1.13%	-1.16%	-3.04%	38,284
▲ NASDAQ Composite (E EUU)	13,505.87	0.06%	-0.92%	-1.85%	-4.92%	22,641
▲ Stoxx EUROPE 600 (Europa)	451.70	0.68%	-0.85%	0.00%	-2.46%	414,481,516
▼ DAX (Alemania)	28.58	-0.07%	-0.59%	-2.26%	1.60%	170
▲ FTSE 100 (Reino Unido)	7,270.76	0.18%	-1.61%	-0.16%	-4.50%	400
▲ CAC 40 (Francia)	7,240.88	0.59%	-0.37%	0.29%	8.96%	2,323,630
▲ IBEX 35 (España)	9,314.00	0.55%	-0.36%	-0.18%	8.01%	485,888
▲ MSCI AC Asia Pacific Index	496.00	0.64%	-2.34%	-3.53%	-17.48%	20,903
▲ SHANGHAI SE Comp. (China)	17,791.01	0.95%	-4.25%	-4.66%	-20.94%	20,538
▲ NIKKEI 225 (Japón)	3,120.33	0.88%	-1.76%	-3.14%	#VALOR!	47,804,427
▲ S&P / ASX 200 (Australia)	31,856.71	0.92%	-1.19%	-1.08%	14.64%	573,391
▲ KOSPI (Corea del Sur)	7,121.60	0.09%	-2.51%	0.18%	-5.40%	39,375
	2,515.74	0.28%	-2.14%	-1.82%	-8.82%	6,919,094

\*Legend: Variation 1D: 1 day; 5D: 5 days; 1M: 1 Month; YTD: Var% to date

Source: Refinitiv, Bloomberg

## Equity

### United States (Stocks from SPX Index)

Largest Gains	Curr.	Price	▲%	Exchange	Largest Losses	Curr.	Price	▼%	Exchange
HASBRO INC/d	USD	67.71	7.05%	NSQ	LUMEN TCHNLG O/d	USD	1.51	-7.36%	NYQ
HGH WR NTRWRK O/d	USD	0.102	6.25%	PNK	VF CORP/d	USD	18.96	-6.88%	NYQ
PORWALAU-X/d	INR	29.4	5.00%	BSE	BEST BUY CO IN/d	USD	74.23	-5.90%	NYQ
MODERNA INC/d	USD	116.24	4.65%	NSQ	REGIONS FINAN/c/d	USD	18.42	-5.00%	NYQ
INTL FLAV & FR/d	USD	66.99	3.75%	NYQ	CHRLS SCHWB CR/d	USD	56.46	-4.95%	NYQ

Source: Refinitiv

### Europe (Stocks from STOXX EUROPE 600)

Largest Gains	Curr.	Price	▲%	Exchange	Largest Losses	Curr.	Price	▼%	Exchange
MISFRESH LTD D/d	USD	0.586	10.36%	NMQ	RED 5/d	AUD	0.145	-9.38%	ASX
GENIUS GROUP O/d	USD	1.0234	10.35%	ASQ	DGTL MD SL A O/d	USD	0.3801	-9.15%	NYQ
CAAI INC A ORD/d	USD	35.32	9.49%	NYQ	NORTHGOLD/d	SEK	6.25	-8.36%	STO
INDIVIOR/d	Gbp	1590	7.80%	LSE	MANILA BULLETI/d	PHP	0.29	-7.94%	PHS
DKN SMCOND 3X B/d	USD	12.3	4.95%	PCQ	SAFEHOLD INC O/d	USD	25.01	-6.33%	NYQ

Source: Refinitiv

## Currency

	Price	1 D*	5 D*	1 M*	YTD*
▼ Euro	1.0844	-0.43%	-0.55%	-1.47%	-0.54%
▼ Yen	145.88	-0.20%	0.21%	3.93%	18.03%
▲ Yuan	7.293	0.09%	0.16%	1.17%	14.62%
▲ Won Koreano	1339.81	0.05%	0.25%	3.74%	9.98%
▲ Libra Esterlina	1.273	-0.19%	0.21%	-1.56%	-2.59%
▼ Dólar de Hong Kong	7.8365	-0.02%	0.17%	0.12%	0.02%
▲ Dólar Australiano	0.6421	0.14%	-0.51%	-3.96%	-15.28%

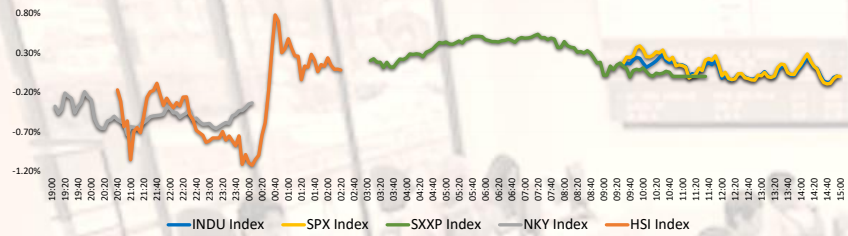
\*Legend: Variation 1D: 1 day; 5D: 5 days; 1M: 1 Month; YTD: Var% to date

## Commodities

	Price	1 D*	5 D*	1 M*	YTD*
Oro (US\$ Oz. T) (LME)	1897.4651	0.19%	-0.22%	-1.79%	-1.37%
Plata (US\$ Oz. T) (LME)	23.39	0.18%	3.91%	1.24%	-3.79%
Cobre (US\$ TM) (LME)	8330.7	1.11%	2.30%	0.31%	-20.15%
Zinc (US\$ TM) (LME)	2314.5	0.82%	-0.24%	-1.13%	-46.56%
Petroleo WTI (US\$ Barril) (NYM)	79.64	-0.60%	-1.07%	6.99%	-7.29%
Etaño (US\$ TM) (LME)	25943	2.01%	4.27%	-8.38%	-42.06%
Plomo (US\$ TM) (LME)	2166.75	-0.72%	2.23%	5.35%	-10.66%
Asúcar #11 (US\$ Libra) (NYB-ICE)	23.71	0.00%	-1.25%	0.21%	31.36%
Cacao (US\$ TM) (NYB-ICE)	23.4	0.00%	-1.56%	-0.55%	29.88%
Café Arábica (US\$ TM) (NYB-ICE)	3423	-0.73%	-0.29%	2.33%	33.19%

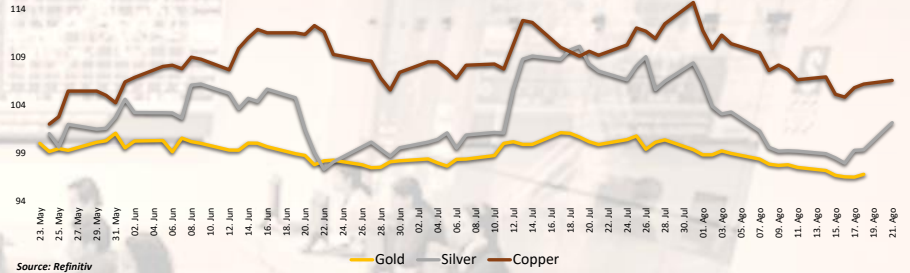
\*Legend: Variation 1D: 1 day; 5D: 5 days; 1M: 1 Month; YTD: Var% to date

**Market Intraday Evolution (var %)**



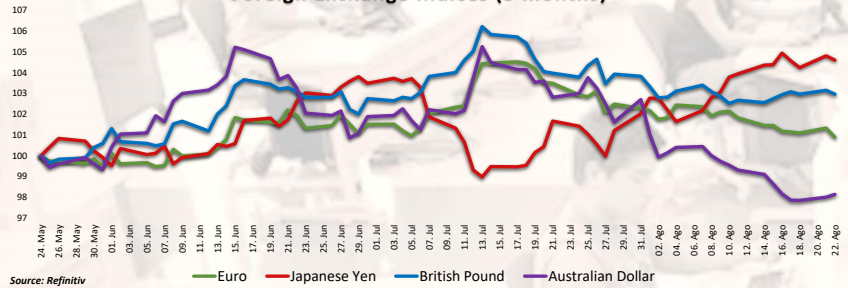
Source: Refinitiv, Bloomberg

**Principal Metals Index (3 months)**



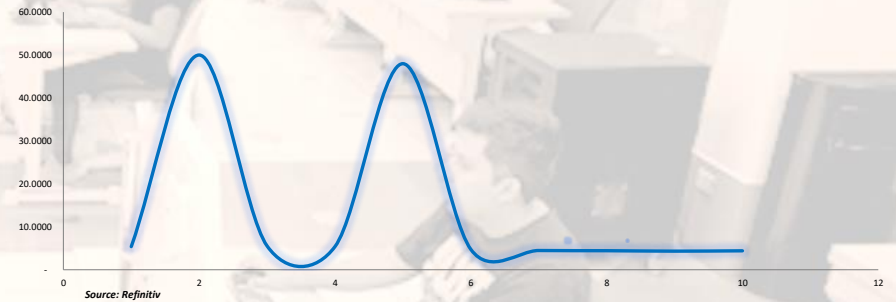
Source: Refinitiv

**Foreign Exchange Indices (3 months)**



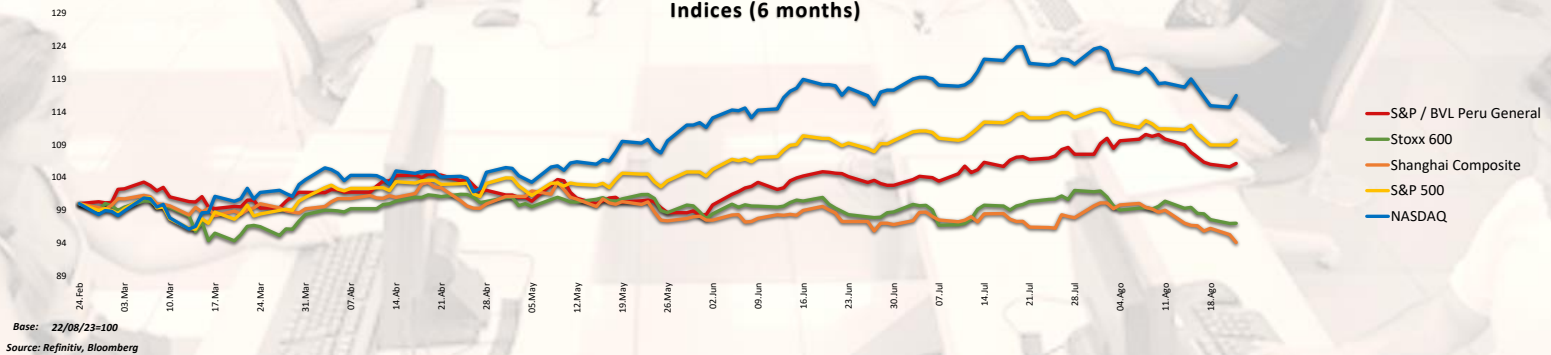
Source: Refinitiv

**USA Treasury Bonds Yield Curve (%)**



Source: Refinitiv

**Indices (6 months)**



Base: 22/08/23=100

Source: Refinitiv, Bloomberg

Capital Market Laboratory Coordinator: MS Javier Penny Pestana  
Collaboration: Nadia Contreras, Nikolas Díaz, Joseph Martinez y Marcelo Cossar  
email: pulsobursatil@ulima.edu.pe



**RANKING STOCKS LIMA**

Ticket	Currency	Price	1 D*	5 D*	1 M*	YTD*	Frequency	Volume	Beta	Dividend Yield (%)	Price Earning	Capitalización		Sector	Index Weight
												Bursátil	(M US\$)		
▲ AUCORCLIM	S/.	6.30	0.80%	-1.56%	-11.89%	-2.60%	5.00%	168,955	0.63	4.45	8.48	17,014	Industrial	-6.46%	
▼ BACKUSILIM	S/.	22.50	-1.75%	-2.17%	-6.25%	-3.42%	90.00%	159	0.42	6.68	83.44	67,661	Industriales	1.42%	
▲ BAP	US\$	140.28	0.34%	-1.58%	-6.49%	3.41%	90.00%	169,926	1.01	4.85	7.55	30,426,425	Diversas	1.50%	
▲ BVN	S/.	1.56	1.96%	0.65%	1.30%	7.72%	85.00%	209,703	0.71	7.67	0.00	75,113	Bancos y Financieras	1.98%	
▲ CASAGRCLIM	S/.	1.56	1.96%	0.65%	1.30%	7.72%	85.00%	209,703	0.71	7.67	0.00	75,113	Bancos y Financieras	1.98%	
▲ BBVACLIM	S/.	1.56	1.96%	0.65%	1.30%	7.72%	85.00%	209,703	0.71	7.67	0.00	75,113	Bancos y Financieras	1.98%	
▲ CORAREILIM	S/.	1.07	0.00%	-2.73%	-2.66%	-22.45%	80.00%	142,728	0.98	3.38	0.00	9,867	Industriales	-32.87%	
▲ CPAC K	US\$	5.35	1.67%	-0.29%	1.79%	3.73%	90.00%	3,386	0.48	11.05	21.91	31,011	Industriales	-1.91%	
▲ CVERDECLIM	US\$	30.61	0.00%	0.36%	-0.48%	7.64%	85.00%	4,594	1.08	5.15	8.10	79,029	Mineras	-4.08%	
▲ ENGESPCCLIM	S/.	3.86	0.00%	-4.69%	-1.03%	12.13%	90.00%	13,193	0.70	10.01	0.00	38,957	Servicios Públicos	41.35%	
▲ ENDSRCLIM	US\$	30.61	0.00%	0.36%	-0.48%	7.64%	85.00%	4,594	1.08	5.15	8.10	79,029	Mineras	-4.08%	
▲ FERREYCLIM	S/.	2.50	0.00%	-1.57%	11.11%	17.87%	90.00%	405,064	0.98	9.54	5.64	76,475	Diversas	12.32%	
▲ AENZAELIM	S/.	0.47	0.00%	-6.00%	6.82%	-43.37%	65.00%	174,122	0.62	0.00	0.00	10,478	Diversas	-56.51%	
▼ IFS	US\$	23.31	-1.23%	-0.51%	-5.05%	-0.81%	90.00%	24,440	1.10	5.00	5.97	230,235	Diversas	-0.48%	
▲ INRETCCLIM	US\$	33.80	0.00%	-0.29%	-2.59%	5.07%	80.00%	2,675	0.73	2.45	14.42	138	Diversas	-12.22%	
▲ LUSURCLIM	S/.	15.80	0.00%	0.27%	10.27%	9.93%	85.00%	10,580	0.56	7.46	0.00	4	Servicios Públicos	2.07%	
▲ MINSURILIM	S/.	3.85	0.00%	0.00%	-1.28%	8.45%	90.00%	29,891	1.08	9.78	0.00	1,784	Mineras	-16.72%	
▲ SCCOK	US\$	79.22	0.81%	-1.16%	6.87%	31.18%	90.00%	1,509,873	1.30	5.09	19.39	55,742,169	Mineras	56.03%	
▼ SIDERCLIM	S/.	1.19	-0.83%	-0.83%	-4.03%	-26.09%	85.00%	15,300	0.83	44.85	0.00	8,606	Industriales	-29.27%	
▲ UNACMCLIM	S/.	2.76	0.00%	1.23%	1.23%	10.03%	10.00%	4,483	-0.02	4.03	0.00	3,301	Diversas	1.33%	
▲ VOICARCLIM	S/.	2.76	0.00%	1.23%	1.23%	10.03%	10.00%	4,483	-0.02	4.03	0.00	3,301	Diversas	1.33%	
▲ BROCALCLIM	S/.	1.56	1.96%	0.65%	1.30%	7.72%	85.00%	209,703	0.71	7.67	0.00	75,113	Bancos y Financieras	1.98%	
▲ CORCALCLIM	S/.	1.56	1.96%	0.65%	1.30%	7.72%	85.00%	209,703	0.71	7.67	0.00	75,113	Bancos y Financieras	1.98%	
▲ ENGESCLIM	S/.	3.40	0.00%	1.49%	7.94%	-50.05%	90.00%	104,416	0.93	8.51	4.95	22,777	Servicios Públicos	-20.33%	
▲ GBVLACLIM	S/.	0.47	0.00%	-6.00%	6.82%	-43.37%	65.00%	174,122	0.62	0.00	0.00	10,478	Diversas	-56.51%	

Quantity of Shares: 25  
Source: Refinitiv

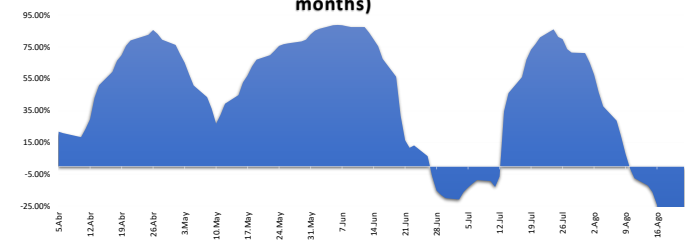
\*\* PER is used in the stock market and original currency of the instrument  
\*Legend: Variation 1D: 1 day; 5D: 5 days; 1M: 1 Month; YTD: Var% to date

**Sectorial Indices**

	Close	1 D*	5 D*	1 M*	YTD*	Beta
S&P/BVL Consumer Index	1,243.97	0.08%	-0.99%	-4.19%	0.85%	0.28
S&P/BVL Industrial Index	240.54	-0.01%	-1.48%	3.56%	-2.55%	0.13
S&P/BVL Financials Index	1,021.63	0.57%	-1.08%	-5.98%	6.88%	1.52
S&P/BVL Construction Index	215.15	-0.02%	-1.43%	0.82%	-11.50%	0.03
S&P/BVL Public Services Index	1,059.09	0.00%	-0.81%	-1.90%	36.81%	0.43
S&P/BVL Mining Index	467.74	0.15%	-0.80%	6.01%	18.40%	1.62
S&P/BVL Electric Utilities Index	1,033.94	0.00%	-0.81%	-1.90%	36.81%	0.43

\*Legend: Variation 1D: 1 day; 5D: 5 days; 1M: 1 Month; YTD: Var% to date  
Source: Refinitiv

**Correlation Yield. Mining Index vs. London Metal Index (3 months)**



Source: Refinitiv

**Latin America Credit Rating**

**RISK RATINGS**

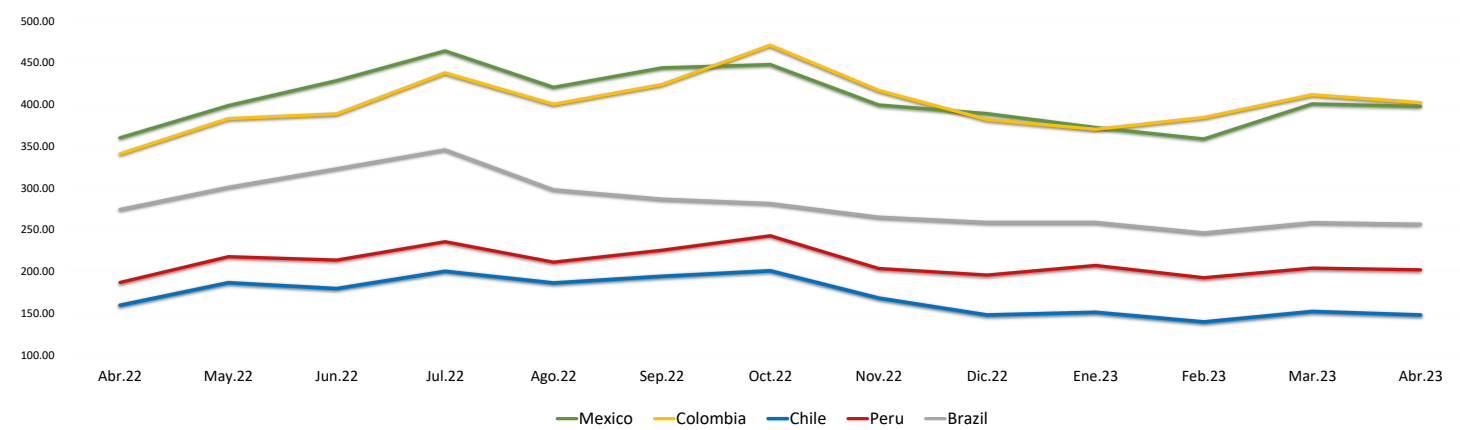
Country	Moody/s	Fitch	S&P
Peru	A	BBB	BBB
Mexico	A+	BBB-	BBB
Venezuela	WR	WD	NR
Brazil	BB	BB	BB-
Colombia	BB+	BB+	BB+
Chile	AA-	A-	A
Argentina	CCC	WD	CCC-
Panama	WD	BBB-	BBB

**Legend**

	Moody/s	Fitch	S&P
Prime	Aaa	Aaa	Aaa
High Grade	Aa1	Aa+	Aa+
	Aa2	Aa	Aa
	Aa3	Aa-	Aa-
High Grade Medium	A1	A+	A+
	A2	A	A
	A3	A-	A-
Low Grade Medium	Baa1	BBB+	BBB+
	Baa2	BBB	BBB
	Baa3	BBB-	BBB-
Non-Investment Grade Speculative	Ba1	BB+	BB+
	Ba2	BB	BB
	Ba3	BB-	BB-
Highly Speculative	B1	B+	B+
	B2	B	B
	B3	B-	B-
Substantial Risk	Caa1	CCC+	CCC+
	Caa2	CCC	CCC
	Caa3	CCC-	CCC-
Extremely Speculative	Ca	CC	CC
		C	
Low Expectation of Payment		RD	SD
Default	C	DDD	D
		DD	
Unclassified	WR		NR

Source: Refinitiv, Bloomberg

**LATAM Country Risk (bps)**



	Abr.22	May.22	Jun.22	Jul.22	Ago.22	Sep.22	Oct.22	Nov.22	Dic.22	Ene.23	Feb.23	Mar.23	Abr.23
Peru	186.67	217.55	213.55	235.43	211.00	225.27	242.59	203.41	195.50	207.05	192.30	203.83	201.90
Brazil	274.06	300.64	322.82	345.48	297.70	286.56	281.30	264.90	258.64	258.64	246.10	258.35	256.55
Chile	159.44	186.32	179.32	200.10	186.09	194.05	200.69	167.97	147.82	150.95	139.45	152.00	147.75
Colombia	340.78	383.05	388.73	437.86	400.26	423.83	470.84	416.81	381.77	370.18	384.35	411.61	402.15
Mexico	360.00	398.59	428.41	464.10	420.43	443.77	447.72	399.31	389.00	372.32	358.55	400.70	397.60

Source: BCRP