

LATAM

Lima, September 25, 2023

Peru: The LSE General index ended today's session with a positive result of +0.31%. The index maintains a positive accumulated annual trend of +6.45% in local currency and a positive accumulated trend of +7.26% in dollar-adjusted currency. With respect to the S&P/BVL Peru SEL, it varied by +0.44% while the S&P/BVL LIMA 25 by -0.02%. The spot PEN reached S/.3.7775. Headline: Investment in ports exceeds that of previous years: X-ray of the sector.

Chile: The IPSA index ended the day with a negative return of -0.79%. The sectors that lost the most during the day were Energy (-2.04%) and Communication services (-1.93%). The worst performing stocks were Compañía Sud Americana de Vapo (-4.69%) and CAP SA (-3.28%). Headline: Carolina Godoy, Economist at Credicorp Capital: "Deloitte-Cadem: Businessmen believe that political instability is the main problem for the Chilean economy".

Colombia: The COLCAP index ended the session with a positive return of +0.90%. The most benefited sectors of the day were Materials (+1.78%) and Energy (+1.44%). The best performing stocks were Bolsa de Valores de Colombia (+9.62%) and Cementos Argos SA (+6.19%). Headline: Economic slowdown could freeze the fight against poverty.

Mexico: The IPC index closed the day in negative territory at -0.60%. The worst performing sectors of the day were Real Estate (-2.31%) and Communication Services (-2.19%). The worst performing stocks were Controladora Vuela Cia de Avia (-5.19%) and Quálitas Controladora SAB (-4.63%). Headline: Southern states grow at twice the rate of Mexican economy: Gabriel Yorico.

Brazil: The IBOVESPA index closed the day in negative territory at -0.07%. The sectors that lost the most during the day were Materials (-1.51%) and Non-Basic Consumer Products (-0.90%). The worst performing stocks were Globex Utilities SA (-13.24%) and Magazine Luiza SA (-4.02%). Headline: Companies increase social investment to 4 billion reais per year.

Equity

Largest Gains	Exchange	Curr.	Price	▲ %
ENEL CHILE SA	SGO	CLP	47.35	2.93%
WALMART DE MEXIC	MEX	MXN	69.25	2.90%
PARQUE ARAUCO	SGO	CLP	1,175.00	2.79%
BANCOLOMBIA-PREF	COL	COP	31,400.00	2.61%
GRUPO ENERGIA BO	COL	COP	1,879.00	2.12%

Source: Refinitiv

Largest Losses	Exchange	Curr.	Price	▼ %
AERO DEL PA MEX	MEX	MXN	305	-2.08%
EMPRESAS COPEC	SGO	CLP	5,880	-2.00%
ENTEL SGO	SGO	CLP	3,125	-1.88%
SONDA SA	SGO	CLP	406	-1.79%
GRUPO AERG MEX	MEX	MXN	181	-1.63%

Source: Refinitiv

Per Turnover	Exchange	Amount (US\$)
GRUPO F BANORT-O	MEX	59,235.74
WALMART DE MEXIC	MEX	50,463.90
FOMENTO ECON-UBD	MEX	19,981.68
ARCA CONTINENTAL	MEX	19,752.40
CEMEX SAB-CPO	MEX	15,477.23

Source: Refinitiv

Per Volume	Exchange	Volume
COLBUN SA	SGO	78,632,853.00
ENEL CHILE SA	SGO	65,756,703.00
BANCO DE CHILE	SGO	53,888,083.00
BANCO SANTANDER	SGO	52,427,692.00
ENEL AMERICAS SA	SGO	30,212,563.00

Source: Refinitiv

ETFs

	Curr.	Close	1 D	5 D	1 M	YTD	Exchange
ISHARES MSCI ALL PERU CAPPED	USD	30.42	-0.29%	-4.15%	-6.17%	6.25%	PCQ
ISHARES MSCI CHILE CAPPED	USD	25.86	-1.07%	-4.01%	-11.44%	3.88%	BTQ
GLOBAL X MSCI COLOMBIA	USD	20.86	-0.09%	-1.60%	-2.29%	-30.11%	PCQ
ISHARES MSCI MEXICO CAPPED	USD	151.32	-1.71%	-0.05%	-4.97%	26.43%	LSE
ISHARES MSCI EMERGING MARKETS	USD	38.30	-0.44%	-2.00%	-2.72%	-3.65%	PCQ
VANGUARD FTSE EMERGING MARKETS	CAD	31.92	-0.62%	-1.91%	-2.86%	0.19%	TOR
ISHARES CORE MSCI EMERGING MARKETS	USD	48.04	-0.39%	-2.00%	-2.18%	-2.20%	PCQ
ISHARES JP MORGAN EMERGING MARKETS BONDS	USD	83.33	-0.57%	-1.37%	-2.13%	-5.91%	NMQ
MORGAN STANLEY EMERGING MARKETS DOMESTIC	USD	4.47	-1.32%	-5.10%	-5.89%	0.22%	NYQ
ISHARES MSCI BRAZIL ETF	USD	31.00	-0.55%	-3.91%	0.19%	2.48%	PCQ

Source: Refinitiv

Main Indexes

	Close	1 D	5 D	1 M	YTD	Market Cap. (US\$ Mill.)
▼ IPSA (Chile)	5,785.84	-0.79%	-3.61%	-6.92%	21.96%	110,891
▼ IGPA (Chile)	29,394.43	-0.74%	-3.67%	-7.09%	20.57%	135,499
▲ COLSC (Colombia)	758.60	0.93%	-0.72%	-10.22%	-20.37%	3,239
▲ COLCAP (Colombia)	1,100.33	0.90%	0.03%	-3.95%	-27.20%	60,386
▲ S&P/BVL LIMA (Peru)	22,707.11	0.31%	-0.99%	-2.23%	13.32%	108,036
▲ S&P/BVL SEL (Peru)	593.23	0.44%	-0.14%	-1.49%	13.29%	89,525
▲ S&P/BVL LIMA 25	30,614.08	-0.02%	-0.84%	-1.83%	7.11%	106,636
▼ IPC (México)	51,367.46	-0.60%	-0.61%	-3.59%	4.71%	393,250
▼ S&P MILA 40	469.72	-1.07%	-4.74%	-7.66%	-1.12%	219,456
▼ IBOVESPA (Brazil)	23,348.83	-1.0%	-5.1%	-0.8%	16.7%	675,518

*Legend: Variation 1D: 1 day; 5D: 5 days; 1M: 1 Month; YTD: Var% to date

Source: Refinitiv, Bloomberg

Currency

	Price	1 D*	5 D*	1 M*	YTD*
▲ Sol (PEN)	3.76	0.00%	1.47%	1.83%	-1.56%
▲ Peso Chileno (CLP)	902.40	0.89%	2.12%	5.37%	4.08%
▲ Peso Colombiano (COP)	4,054.40	1.52%	3.92%	0.36%	-0.72%
▲ Peso Mexicano (MXN)	17.38	1.06%	1.46%	2.01%	-14.72%
▲ Real Brasileiro (BRL)	4.97	0.71%	2.36%	0.17%	-3.71%

*Legend: Variation 1D: 1 day; 5D: 5 days; 1M: 1 Month; YTD: Var% to date

Source: Refinitiv

Fixed Income

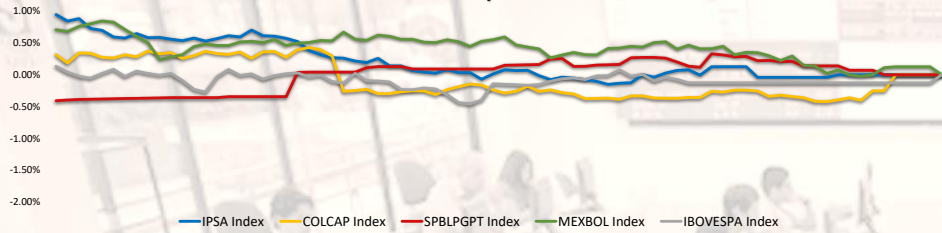
Instrument	Currency	Price	Bid Yield (%)	Ask Yield (%)	Duration
PERU 7.35 07/21/25	USD	5.75	102.65	549.8%	1.72
PERU 4.125 08/25/27	USD	5.58	95.02	545.6%	3.64
PERU 8.75 11/21/33	USD	6.22	120.03	598.7%	7.05
PERU 6.55 03/14/37	USD	6.12	104.07	602.3%	8.77
PERU 5.625 11/18/2050	USD	6.07	94.61	597.2%	13.58
CHILE 2.45 01/31/31	USD	5.39	82.58	529.6%	6.67
CHILE 3.125 01/21/26	USD	5.45	95.02	538.8%	2.24
CHILE 3.625 10/30/42	USD	6.04	73.74	589.3%	12.67
COLOM 11.85 03/09/28	USD	7.64	115.89	750.6%	3.64
COLOM 10.375 01/28/33	USD	8.45	112.98	791.8%	6.32
COLOM 7.375 09/18/37	USD	8.18	94.37	792.0%	8.76
COLOM 6.125 01/18/41	USD	8.31	80.71	810.8%	9.99
MEX 4 10/02/23	MXV	5.22	84.63	516.0%	7.30
MEX5.55 01/45	USD	6.69	88.26	653.1%	12.00

Source: Refinitiv

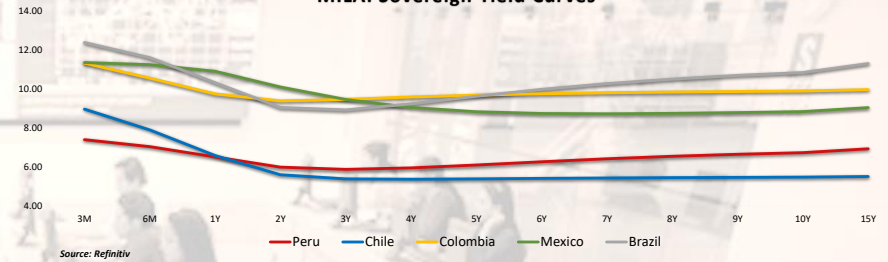
Capital Market Laboratory Coordinator: MS Javier Penny Pestana
Collaboration: Nadia Contreras, Nikolas Díaz, Joseph Martinez y Marcelo Cossar
email: pulsohorsatil@ulima.edu.pe

The content of this document is just for informational purposes. The information and opinions expressed should not be consider as recommendations for future decisions. Under any circumstances, the Capital Market Laboratory of University of Lima will be responsible for the use of the statements in this document.

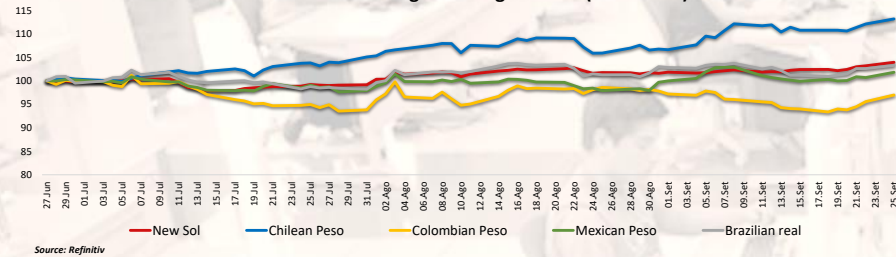
MILA: Intraday Evolution



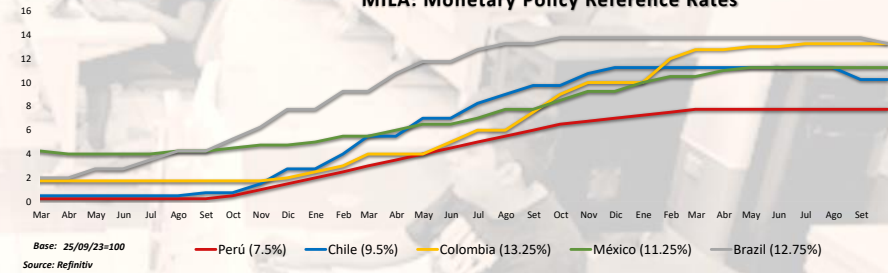
MILA: Sovereign Yield Curves



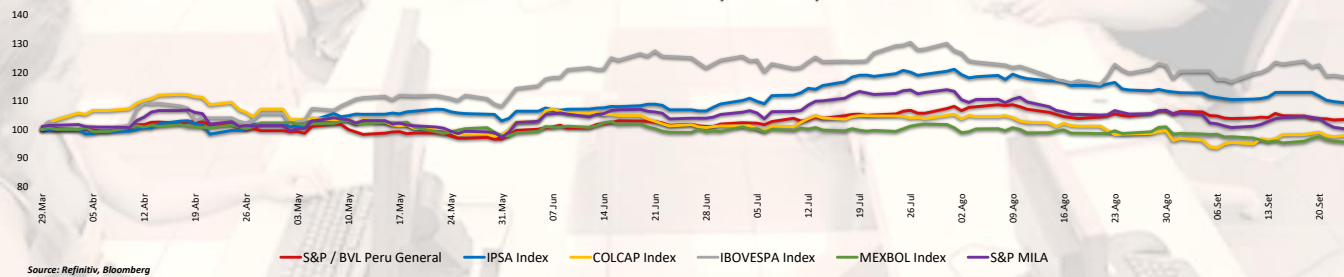
MILA: Foreign Exchange Indices (3 months)



MILA: Monetary Policy Reference Rates



MILA: Stock Indices (6 months)



Capital Market Laboratory Coordinator: MS Javier Penny Pestana
Collaboration: Nadia Contreras, Nikolas Díaz, Joseph Martinez y Marcelo Cossar
email: pulso**ursatil**@ulima.edu.pe

WORLD

United States:

The U.S. market closed with mixed performances. The DOW JONES finished in the green as investors awaited economic data and statements from Federal Reserve policymakers later in the week for clarity on the path of interest rates. Elsewhere, Rite Aid plunged 33.3% after news broke that the drugstore chain is negotiating a bankruptcy plan that would include liquidating a substantial portion of its more than 2,100 pharmacies. In addition, Foot Locker lost 1.9% and Nike also fell 0.3% after analysts at Jefferies downgraded the stock. The S&P 500 index also ended with positive returns, among individual stocks, Amazon gained about 1.7% after the company said it would invest up to \$4 billion in artificial intelligence company Anthropic. Netflix added 1.3% after striking Hollywood screenwriters reached a new tentative labor agreement. Finally, the NASDAQ index ended the day higher. Among technology stocks, TransCode Therapeutics Inc. (+287.04%), Vaccitech PLC ADR (+88.10%) and Biophytis S.A. ADR (+80.66%) were the top performers. Thus, DOW JONES +0.13%, S&P 500 +0.40%, NASDAQ +0.45% with the market having positive returns.

Europe:

Major European indices ended the session with negative returns. The pan-European STOXX 600 index closed lower, as there are signs that the ECB may halt its interest rate hikes, as concerns about the economic slowdown outweigh inflationary fears. In addition, ECB President Lagarde stated that policymakers believe that the bank's policy rates have reached levels that, if sustained over an extended period, would contribute significantly to achieving the inflation target. The UK market, reflected in the FTSE 100 closed with a negative performance, where stocks exposed to the Chinese economy and US borrowing costs, especially industrial miners, were among the biggest laggards, with Rio Tinto and Antofagasta falling by 2%, while Anglo American and Fresnillo declined by more than 1%. Similarly, the German market, reflected in the DAX index, closed in negative territory, dragged down by travel and leisure and household goods stocks. This decline was driven by a rally in bond yields due to concerns about rising oil prices and their potential impact on inflation and the outlook for monetary policy. The French market closed negative, with luxury brands Kering, Hermès and LVMH the biggest laggards, down 4.4%, 3.2% and 2.5%, after Chinese real estate giant Evergrande cancelled a meeting with its creditors, raising concerns about its massive debt and the country's general economic slowdown. Thus, FTSE 100 -0.78%; CAC 40 -0.85%; DAX -0.98%; STOXX 600 -0.62% ended with negative values.

Asia:

Major Asian indices closed with mixed performances. The Chinese market ended lower as cautious foreign investors dumped domestic stocks ahead of a week-long holiday, while a weak regional market also weighed on sentiment. On the corporate front, China Evergrande shares fell 21.8% after the beleaguered developer said it could not issue new debt due to an ongoing investigation into one of its subsidiaries, dealing another blow to its restructuring plans. Elsewhere, the Hang Seng index closed negative, driven by tech giants down 2.7% and mainland developers down 4.2%. The South Korean market ended lower as investors weighed rising oil prices and the U.S. Federal Reserve's higher interest rate stance. The Japanese market closed in positive territory. Japan's Nikkei stock average rallied sharply on Monday as investors bought back battered shares following the benchmark index's worst week in 2023. The Australian market ended with gains as a rally in tech stocks countered a drop from heavyweight miners and banks on the benchmark index, with investors now eyeing local inflation data. Thus, NIKKEI +0.85%; HANG SENG -1.82%; CSI 300 -0.65%; S&P/ASX 200 +0.11%; KOSPI -0.49%; SHANGHAI COMPOSITE -0.54% ended with mixed performances.

ETFs

	Curr.	Close	1 D	5 D	1 M	YTD	Exchange
SPDR S&P 500 ETF TRUST	USD	432.23	0.42%	-2.57%	-3.54%	8.55%	PCQ
ISHARES MSCI EMERGING MARKETS ETF	USD	38.30	-0.44%	-2.00%	-2.72%	-3.65%	PCQ
ISHARES IBOXX \$ HIGH YIELD CORPORATE BOND ETF	USD	73.90	-0.14%	-1.06%	-1.23%	-3.74%	PCQ
FINANCIAL SELECT SECTOR SPDR FUND	USD	33.74	0.24%	-2.96%	-3.19%	-0.50%	PCQ
VANECK GOLD MINERS ETF	USD	28.51	-1.25%	-4.17%	-1.52%	-11.54%	PCQ
ISHARES RUSSELL 2000 ETF	USD	177.46	0.45%	-2.70%	-6.92%	1.46%	PCQ
SPDR GOLD SHARES	USD	177.70	-0.52%	-0.94%	0.36%	2.79%	PCQ
ISHARES 20+ YEAR TREASURY BOND ETF	USD	89.18	-2.46%	-4.61%	-6.28%	-22.23%	NMQ
INVESCO QQQ TRUST SERIES 1	USD	359.61	0.47%	-2.98%	-2.90%	21.02%	NMQ
ISHARES BIOTECHNOLOGY ETF	USD	122.27	-0.24%	-2.38%	-4.79%	13.97%	NMQ
ENERGY SELECT SECTOR SPDR FUND	USD	90.43	1.25%	-1.82%	1.02%	18.89%	PCQ
PROSHARES ULTRA VIX ST FUTURES ETF	USD	15.84	0.13%	17.55%	-4.58%	-91.87%	BTQ
UNITED STATES OIL ETF	USD	80.39	-0.30%	-1.30%	8.91%	4.99%	PCQ
ISHARES MSCI BRAZIL ETF	USD	31.00	-0.55%	-3.91%	0.19%	2.48%	PCQ
SPDR S&P OIL & GAS EXP & PRODUCTION ETF	USD	146.06	1.84%	-2.27%	-1.16%	14.79%	PCQ
UTILITIES SELECT SECTOR SPDR FUND	USD	63.20	-0.14%	-1.82%	-1.34%	-11.82%	PCQ
ISHARES US REAL ESTATE ETF	USD	80.04	-0.19%	-4.62%	-6.38%	-16.28%	PCQ
SPDR S&P BIOTECH ETF	USD	71.88	-1.48%	-5.36%	-10.18%	11.67%	PCQ
ISHARES IBOXX \$ INVESTMENT GRADE CORP BOND ETF	USD	102.83	-0.97%	-1.66%	-2.08%	-7.53%	PCQ
ISHARES JP MORGAN USD EMERGING MARKETS BOND ETF	USD	83.33	-0.57%	-1.37%	-2.13%	-5.91%	NMQ
REAL ESTATE SELECT SECT SPDR FUND	USD	34.51	-0.17%	-4.62%	-7.21%	-19.26%	PCQ
ISHARES CHINA LARGE-CAP ETF	USD	26.72	-1.55%	-1.22%	-3.40%	-4.61%	PCQ
CONSUMER STAPLES SPDR FUND	USD	69.89	-0.36%	-2.31%	-6.10%	-8.87%	PCQ
VANECK JUNIOR GOLD MINERS ETF	USD	33.72	-1.26%	-5.57%	-3.38%	-12.14%	PCQ
SPDR BLOOMBERG HIGH YIELD BOND ETF	USD	90.63	-0.14%	-1.06%	-1.23%	-4.90%	PCQ
VANGUARD REAL ESTATE INDEX FUND ETF	USD	77.37	-0.09%	-4.58%	-6.54%	-18.98%	PCQ
DIREXION DAILY GOLD MINERS INDEX BULL 2X SHARES	USD	30.10	-2.49%	-8.68%	-4.63%	-38.61%	PCQ
PROSHARES ULTRASHORT 20+ YEAR TREASURY	USD	38.71	5.02%	8.71%	12.99%	44.55%	PCQ
ISHARES MSCI EAFE ETF	USD	69.59	-0.44%	-2.17%	-3.09%	6.67%	PCQ
ISHARES PREFERRED AND INCOME SECURITIES ETF	USD	30.24	-0.28%	-1.26%	-1.45%	-7.48%	NMQ
WISDOMTREE JAPAN HEDGED EQUITY ETF	USD	90.11	-0.01%	-0.63%	6.77%	43.51%	PCQ
GRayscale BITCOIN TRUST (BTC)	USD	18.45	-2.38%	-4.06%	-8.30%	-11.74%	PNK

Source: Refinitiv

Main Indexes

	Close	1 D	5 D	1 M	YTD	Market Cap. (US\$ Mill.)
▼ Dow Jones (EEUU)	13,271.32	-60.93%	-61.67%	-62.41%	-58.84%	10,860
▲ Standard & Poor's 500 (EEUU)	4,337.44	0.40%	-2.61%	-3.39%	8.67%	37,732
▲ NASDAQ Composite (EEUU)	13,271.32	0.45%	-3.20%	-3.75%	14.18%	22,234
▲ Stoxx EUROPE 600 (Europa)	450.44	-0.62%	-1.38%	-2.05%	7.90%	451,522,715
▼ DAX (Alemania)	27.37	-1.30%	-2.94%	-6.11%	8.65%	145
▼ FTSE 100 (Reino Unido)	7,623.99	-0.78%	-0.38%	1.56%	5.65%	403
▼ CAC 40 (Francia)	7,123.88	-0.85%	-2.09%	-3.06%	17.05%	3,202,021
▼ IBEX 35 (España)	9,386.00	-1.22%	-1.01%	-0.46%	15.32%	712,420
▲ MSCI AC Asia Pacific Index	497.21	0.00%	-1.36%	-2.46%	-5.83%	21,451
▲ HANG SENG (Hong Kong)	17,729.29	-1.82%	-1.12%	-5.56%	-11.36%	20,378
▼ SHANGHAI SE Comp. (China)	3,115.61	-0.54%	-0.33%	-1.98%	3.71%	40,372,133
▲ NIKKEI 225 (Japón)	32,678.62	0.85%	-2.55%	1.93%	24.16%	607,295
▲ S&P / ASX 200 (Australia)	7,076.50	0.11%	-2.13%	-2.76%	-0.62%	22,870
▲ KOSPI (Corea del Sur)	2,495.76	-0.49%	-3.07%	-2.92%	-4.41%	5,591,737

*Legend: Variation 1D: 1 day; 5D: 5 days; 1M: 1 Month; YTD: Var% to date

Source: Refinitiv, Bloomberg

Equity

United States (Stocks from SPX Index)

Largest Gains	Curr.	Price	▲ %	Exchange
BATH&BODY W/R O/d	USD	39.8	5.54%	NYSE
PORWALU-XT/d	INR	25.18	4.96%	BSE
HGH WR NTRWRK O/d	USD	0.1125	4.65%	PNK
FORTINET/d	USD	71.27	4.61%	NSQ
PAYCOM SOFTWARE/d	USD	305.93	4.30%	NYSE

Source: Refinitiv

Largest Losses	Curr.	Price	▼ %	Exchange
EPAM SYSTEMS I/d	USD	203.25	-21.72%	ASX
CH ROBINSON WW/d	USD	91.4	-6.42%	NYSE
LUMEN TECHNLG O/d	USD	1.91	-4.98%	NYSE
INTEL CORP/d	USD	29.86	-4.63%	NYSE
3M COMPANY/d	USD	97.98	-4.44%	NYSE

Source: Refinitiv

Europe (Stocks from STOXX EUROPE 600)

Largest Gains	Curr.	Price	▲ %	Exchange
MISFRESH LTD D/d	USD	0.586	10.36%	NMQ
GENIUS GROUP O/d	USD	1.0234	10.35%	ASQ
CSAI INC A ORD/d	USD	35.32	9.49%	NYSE
INDIVIOR/d	Gbp	1590	7.80%	LSE
DXN SMCND 3X B/d	USD	12.3	4.95%	PCQ

Source: Refinitiv

Largest Losses	Curr.	Price	▼ %	Exchange
RED 5/d	AUD	0.145	-9.38%	ASX
DGTL MD SL A O/d	USD	0.3801	-9.15%	NYSE
NORTHGOLD/d	SEK	6.25	-8.36%	STO
MANILA BULLET/d	PHP	0.29	-7.94%	PHS
SAFEHOLD INC O/d	USD	25.01	-6.33%	NYSE

Source: Refinitiv

Currency

	Price	1 D*	5 D*	1 M*	YTD*
▲ Euro	1.059	0.00%	-0.94%	-2.88%	0.33%
▼ Yen	148.85	-0.02%	0.85%	2.27%	14.28%
▼ Yuan	7.311	0.00%	0.27%	0.72%	8.64%
▲ Won Korean	1338.81	0.06%	1.15%	0.15%	5.06%
▲ Libra Esterlina	1.2209	-0.02%	-1.40%	-3.71%	-0.99%
▲ Dólar de Hong Kong	7.8161	0.01%	-0.03%	-0.04%	-0.43%
▼ Dólar Australiano	0.6421	-0.03%	-0.20%	-0.97%	-7.68%

*Legend: Variation 1D: 1 day; 5D: 5 days; 1M: 1 Month; YTD: Var% to date

Commodities

	Price	1 D*	5 D*	1 M*	YTD*
Oro (US\$ Oz. T) (LME)	1915.6553	-0.48%	-0.90%	0.41%	3.33%
Plata (US\$ Oz. T) (LME)	23.11	-1.78%	-0.52%	2.21%	6.06%
Cobre (US\$ TM) (LME)	8161.74	0.00%	-1.66%	-0.98%	-11.67%
Zinc (US\$ TM) (LME)	2541.25	0.00%	1.21%	7.86%	-29.88%
Petroleo WTI (US\$ Barril) (NYM)	89.68	-0.39%	-0.99%	10.21%	9.22%
Etiopía (US\$ TM) (LME)	26057	0.00%	0.46%	4.17%	-30.23%
Piromo (US\$ TM) (LME)	2239.75	0.00%	-1.61%	7.32%	4.58%
Azúcar #11 (US\$ Libra) (NYB-ICE)	26.58	-2.57%	-2.85%	9.52%	47.42%
Cacao (US\$ TM) (NYB-ICE)	26.58	-2.57%	-2.85%	9.52%	47.42%
Café Arábica (US\$ TM) (NYB-ICE)	3496	-2.40%	-3.45%	2.91%	40.23%

*Legend: Variation 1D: 1 day; 5D: 5 days; 1M: 1 Month; YTD: Var% to date

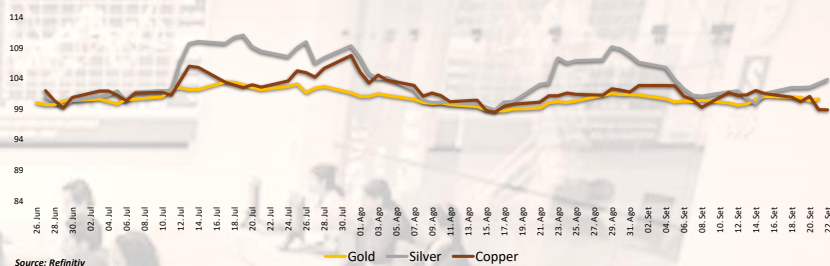
Capital Market Laboratory Coordinator: MS Javier Penny Pestana
Collaboration: Nadia Contreras, Nikolas Díaz, Joseph Martinez y Marcelo Cossar
email: pulsobursatil@ulima.edu.pe

Market Intraday Evolution (var %)



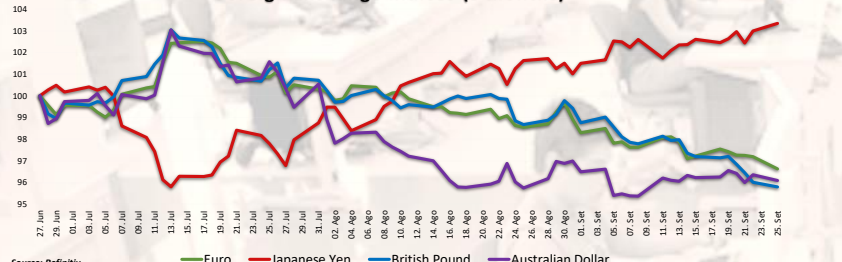
Source: Refinitiv, Bloomberg

Principal Metals Index (3 months)



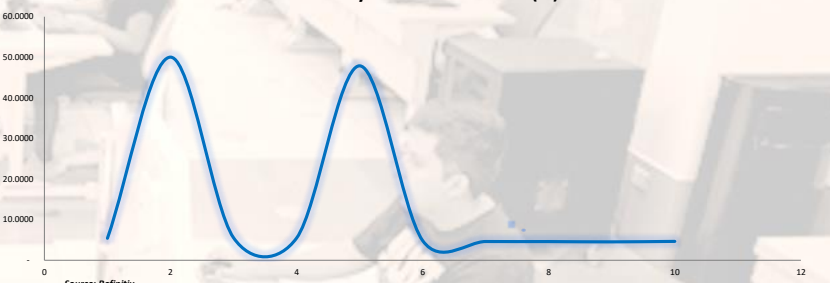
Source: Refinitiv

Foreign Exchange Indices (3 months)



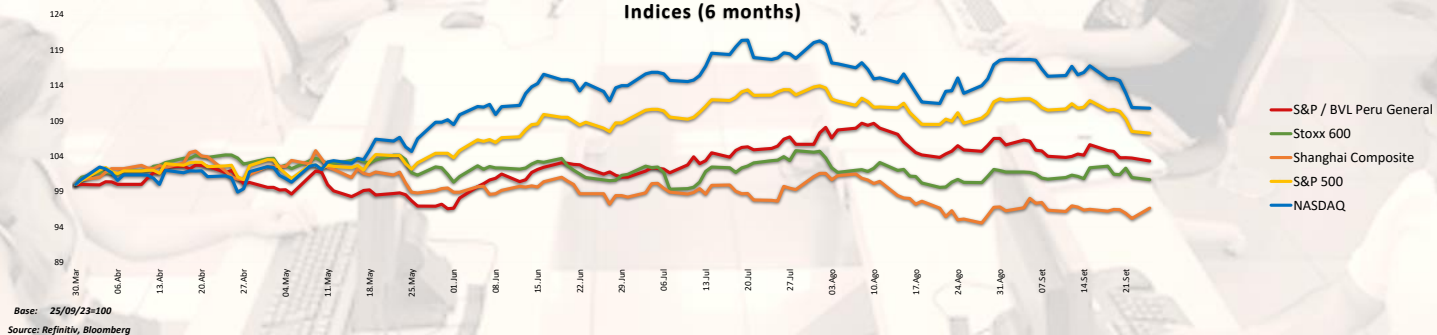
Source: Refinitiv

USA Treasury Bonds Yield Curve (%)



Source: Refinitiv

Indices (6 months)



Base: 25/09/23=100
Source: Refinitiv, Bloomberg

Capital Market Laboratory Coordinator: MS Javier Penny Pestana
Collaboration: Nadia Contreras, Nikolas Díaz, Joseph Martínez y Marcelo Cossar
email: pulsobursatil@ulima.edu.pe

RANKING STOCKS LIMA

Ticket	Currency	Price	1 D*	5 D*	1 M*	YTD*	Frequency	Volume	Beta	Dividend Yield (%)	Price Earning	Capitalización Bursátil (M US\$)	Sector	Index Weight
ALICORCLIM	S/.	6.20	0.00%	0.16%	-3.13%	-4.15%	5.00%	1,985	0.63	4.50	8.18	8,125	Industrial	-7.53%
BACKUSI1M	S/.	21.50	-2.32%	-4.02%	-6.52%	-7.71%	90.00%	2,615	0.42	6.98	0.00	11,862	Industriales	-8.78%
BAP	US\$	132.16	0.34%	-3.46%	-7.28%	-2.58%	90.00%	187,919	1.01	5.14	7.12	28,186,864	Diversas	-11.19%
BVN	S/.	1.48	0.00%	-2.63%	-4.52%	2.20%	85.00%	156,841	0.71	7.93	0.00	24,376	Bancos y Financieras	2.57%
CASAGRCLIM	S/.	1.48	0.00%	-2.63%	-4.52%	2.20%	85.00%	156,841	0.71	7.93	0.00	24,376	Bancos y Financieras	2.57%
BBVACLIM	S/.	1.48	0.00%	-2.63%	-4.52%	2.20%	85.00%	156,841	0.71	7.93	0.00	24,376	Bancos y Financieras	2.57%
CORARECLIM	S/.	1.05	0.00%	0.00%	-4.55%	-23.90%	80.00%	57,600	0.99	3.29	0.00	9,319	Industriales	-35.52%
CPACK	US\$	5.15	-0.19%	-0.19%	-4.10%	-0.23%	90.00%	5,612	0.48	10.97	26.46	47,662	Industriales	-6.49%
EVERDECLIM	US\$	30.35	0.00%	0.66%	-0.49%	6.72%	85.00%	5,383	1.08	5.29	8.03	91,869	Mineras	-1.46%
ENGPECLIM	S/.	3.88	0.78%	0.26%	-2.89%	14.25%	90.00%	8,062	0.69	4.76	0.00	12,402	Servicios Públicos	36.97%
ENDISPCLIM	US\$	30.35	0.00%	0.66%	-0.49%	6.72%	85.00%	5,383	1.08	5.29	8.03	91,869	Mineras	-1.46%
FERREYCLIM	S/.	2.45	-0.41%	0.00%	-3.54%	15.51%	90.00%	254,920	0.99	9.69	5.55	36,267	Diversas	1.58%
AENZACLIM	S/.	0.64	0.00%	1.59%	28.00%	-22.89%	65.00%	64,670	0.60	0.00	0.00	20	Diversas	-30.80%
IFS	US\$	23.82	0.85%	0.97%	1.66%	1.36%	90.00%	53,376	1.07	5.00	6.22	2,379,277	Diversas	-0.78%
INRETCCLIM	US\$	31.00	-1.59%	-4.62%	-8.55%	-3.64%	80.00%	10	0.74	2.63	13.49	5,396	Diversas	-12.56%
LUSURCLIM	S/.	16.00	0.88%	0.88%	1.54%	11.32%	85.00%	91	0.56	7.43	0.00	4,765	Servicios Públicos	-0.78%
MINSURILIM	S/.	3.85	0.00%	-1.28%	0.00%	8.45%	90.00%	34,142	1.08	9.78	20.19	13,387	Mineras	-14.63%
SCCO.K	US\$	74.50	-0.31%	-6.48%	-7.05%	23.36%	90.00%	1,213,180	1.30	5.35	18.41	80,652,483	Mineras	42.65%
SIDERCLIM	S/.	1.10	0.92%	-5.98%	-8.33%	-31.68%	85.00%	18,114	0.84	49.37	0.00	5,963	Industriales	-29.61%
UNACMCLIM	S/.	2.76	0.00%	0.00%	1.23%	10.03%	10.00%	0	-0.02	4.08	0.00	NULL	Diversas	-1.56%
VOUCACLIM	S/.	2.76	0.00%	0.00%	1.23%	10.03%	10.00%	0	-0.02	4.08	0.00	NULL	Diversas	-1.56%
BROCALCLIM	S/.	1.48	0.00%	-2.63%	-4.52%	2.20%	85.00%	156,841	0.71	7.93	0.00	24,376	Bancos y Financieras	2.57%
CORARECLIM	S/.	1.48	0.00%	-2.63%	-4.52%	2.20%	85.00%	156,841	0.71	7.93	0.00	24,376	Bancos y Financieras	2.57%
ENGIECLIM	S/.	3.53	0.00%	0.86%	5.37%	-48.14%	90.00%	30,005	0.93	8.19	5.14	40,270	Servicios Públicos	-15.79%
GBVLACLIM	S/.	0.64	0.00%	1.59%	28.00%	-22.89%	65.00%	64,670	0.60	0.00	0.00	20	Diversas	-30.80%

Quantity of Shares: 25
Source: Refinitiv

Up
Down

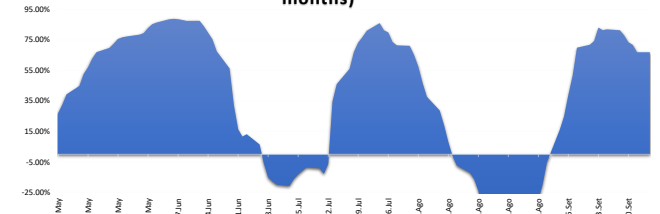
** PER is used in the stock market and original currency of the instrument
*Legend: Variation 1D: 1 day; 5D: 5 days; 1M: 1 Month; YTD: Var% to date

Sectorial Indices

	Close	1 D*	5 D*	1 M*	YTD*	Beta
S&P/BVL Consumer Index	1,183.05	-0.95%	-2.28%	-4.99%	-4.09%	0.24
S&P/BVL Industrial Index	241.91	0.01%	-0.58%	1.04%	-2.00%	0.11
S&P/BVL Financials Index	980.21	1.09%	-0.57%	-5.33%	2.55%	1.56
S&P/BVL Construction Index	219.83	0.26%	-0.75%	2.94%	-9.57%	0.03
S&P/BVL Public Services Index	1,084.65	0.21%	0.46%	2.41%	40.11%	0.32
S&P/BVL Mining Index	462.62	0.30%	-3.55%	-3.34%	17.10%	1.72
S&P/BVL Electric Utilities Index	1,058.89	0.21%	0.46%	2.41%	40.11%	0.32

*Legend: Variation 1D: 1 day; 5D: 5 days; 1M: 1 Month; YTD: Var% to date
Source: Refinitiv

Correlation Yield. Mining Index vs. London Metal Index (3 months)



Source: Refinitiv

Latin America Credit Rating

RISK RATINGS

Country	Moody's	Fitch	S&P
Peru	A	BBB	BBB
Mexico	A+	BBB-	BBB
Venezuela	WR	WD	NR
Brazil	BB	BB	BB-
Colombia	BB+	BB+	BB+
Chile	AA-	A-	A
Argentina	CCC	WD	CCC-
Panama	WD	BBB-	BBB

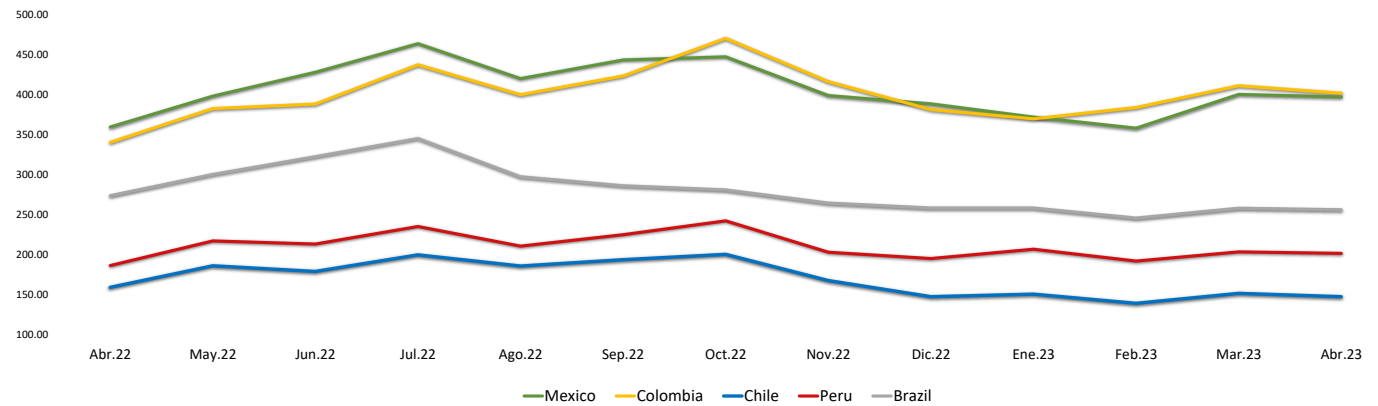
Source: Refinitiv, Bloomberg

Legend

Theme	Moody's	Fitch	S&P
High Grade	Aa1	AAA	AAA
	Aa2	AA	AA
	Aa3	AA-	AA-
High Grade Medium	A1	A+	A+
	A2	A	A
	A3	A-	A-
Low Grade Medium	Baa1	BBB+	BBB+
	Baa2	BBB	BBB
	Baa3	BBB-	BBB-
Non-Investment Grade Speculative	Ba1	BB+	BB+
	Ba2	BB	BB
	Ba3	BB-	BB-
Highly Speculative	B1	B+	B+
	B2	B	B
	B3	B-	B-
Substantial Risk	Caa1	CCC+	CCC+
	Caa2	CCC	CCC
	Caa3	CCC-	CCC-
Extremely Speculative	Ca	CC	CC
Low Expectation of Payment		RD	SD
Default	C	DDD	D
		DD	D
Unclassified	WR		NR

Source: Refinitiv, Bloomberg

LATAM Country Risk (bps)



	Abr-22	May-22	Jun-22	Jul-22	Ago-22	Sep-22	Oct-22	Nov-22	Dic-22	Ene-23	Feb-23	Mar-23	Abr-23
Peru	186.67	217.55	213.55	235.43	211.00	225.27	242.59	203.41	195.50	207.05	192.30	203.83	201.90
Brazil	274.06	300.64	322.82	345.48	297.70	286.56	281.30	264.90	258.64	258.64	246.10	258.35	256.55
Chile	159.44	186.32	179.32	200.10	186.09	194.05	200.69	167.97	147.82	150.95	139.45	152.00	147.75
Colombia	340.78	383.05	388.73	437.86	400.26	423.83	470.84	416.81	381.77	370.18	384.35	411.61	402.15
Mexico	360.00	398.59	428.41	464.10	420.43	443.77	447.72	399.31	389.00	372.32	358.55	400.70	397.60

Source: BCRP