

## LATINOAMERICA

Lima, 02 de Noviembre de 2023

Peru: The LSE General index ended today's session with a negative result of -0.11%. The index maintains a positive annual cumulative trend of +2.17% in local currency and a positive cumulative trend of +3.15% in dollar-adjusted currency. Regarding the S&P/BVL Peru SEL, it varied -0.57% while the S&P/BVL LIMA 25 varied -0.22%. The spot PEN reached S/.3.7700. Headline: Peru's CPI to remain above target in 2024: Scotiabank.

Chile: The IPSA index ended the day with a positive return of +0.98%. The most benefited sectors of the day were Materials (+4.45%) and Energy (+2.11%). The best performing stocks were Empresas CMPC SA (+4.50%) and CAP SA (+4.19%). Headline: Chile's economic activity recovers as authorities cut rates.

Colombia: The COLCAP index ended the session with a positive return of +0.84%. The sectors that lost the most during the day were Utilities (+1.70%) and Financials (+1.43%). The best performing stocks were Canacol Energy Ltd (+7.75%) and BanColombia SA (+3.31%). Headline: Energia Bogota summons investors for possible sustainable bond.

Mexico: The IPC index closed the day in positive territory at +1.48%. The sectors that benefited the most during the day were Financials (+2.14%) and Consumer Staples (+2.06%). The best performing stocks were Mexichem SAB de CV (+5.96%) and Kimberly-Clark de México SAB de Colombia (+5.08%). Headline: Acapulco needs at least 5 times more than Amlo's promise of recovery.

Brazil: The IBOVESPA index closed the day in positive territory +1.69%. The sectors that lost the least on the day were Communication Services (+4.78%) and Information Technology (+4.74%). The best performing stocks were Locaweb Servicios de Internet S (+10.29%) and CVC Brasil Operadora e Agencia (+8.73%). Headline: Arabica coffee falls as Brazil's rains improve production prospects.

### Renta Variable

Más Subieron	Bolsa	Mon.	Precio	▲ %
BANCOLOMBIA-PREF	COL	COP	28,990.00	3.31%
AMERICA MOVIL-L	NYQ	USD	17.08	2.40%
GRUPO ENERGIA BO	COL	COP	1,750.00	1.80%
ISA SA	COL	COP	14,650.00	1.74%
SURAMERICANA	COL	COP	32,870.00	0.00%

Fuente: Refinitiv

Más Bajaron	Bolsa	Mon.	Precio	▼ %
CEMENTOS A COL	COL	COP	4,665	-2.61%
CORFICOLOMBIANA	COL	COP	12,380	-1.35%
GRUPO AVAL COL	COL	COP	462	-1.22%
GRUPO NUTRESA SA	COL	COP	49,770	-0.40%
GRUPO ARGÇ COL	COL	COP	8,860	-0.28%

Fuente: Refinitiv

Por Monto Negociado	Bolsa	Monto (US\$)
WALMART DE MEXIC	MEX	33,053.31
AMERICA MOVIL-L	NYQ	26,744.44
GRUPO MEXICO-B	MEX	12,388.48
FOMENTO ECON-UBD	MEX	11,839.51
GRUPO F BANORT-O	MEX	11,571.16

Fuente: Refinitiv

Por Volumen	Bolsa	Volumen
ENEL CHILE SA	SGO	141,882,563.00
BANCO SANTANDER	SGO	117,098,013.00
BANCO DE CHILE	SGO	46,696,943.00
COLBUN SA	SGO	19,208,627.00
ENEL AMERICAS SA	SGO	11,579,094.00

Fuente: Refinitiv

### ETFs

	Mon.	Cierre	1 D	5 D	1 M	YTD	Bolsa
ISHARES MSCI ALL PERU CAPPED	Access De	29.40	0.65%	1.25%	-3.95%	4.29%	ied: User req to PE(64)
ISHARES MSCI CHILE CAPPED	Access De	24.65	0.86%	2.58%	-6.70%	-5.01%	ied: User req to PE(64)
GLOBAL X MSCI COLOMBIA	Access De	20.65	2.44%	1.99%	-1.09%	-31.37%	ied: User req to PE(64)
ISHARES MSCI MEXICO CAPPED	Access De	150.01	4.93%	7.95%	-2.81%	28.81%	sd: User req to PE(5625)
ISHARES MSCI EMERGING MARKETS	USD	37.69	1.75%	3.09%	-0.87%	-4.63%	PCQ
VANGUARD FTSE EMERGING MARKETS	Access De	32.02	0.57%	2.07%	0.82%	-0.16%	ied: User req to PE(84)
ISHARES CORE MSCI EMERGING MARKETS	Access De	47.22	1.77%	3.15%	-1.05%	-2.60%	ied: User req to PE(64)
ISHARES JP MORGAN EMERGING MARKETS BONDS	USD	82.71	1.00%	2.16%	-0.91%	-3.23%	NMQ
MORGAN STANLEY EMERGING MARKETS DOMESTIC	Access De	4.46	2.06%	4.94%	-1.76%	0.22%	sd: User req to PE(6562)
ISHARES MSCI BRAZIL ETF	USD	31.54	2.87%	3.44%	1.09%	11.57%	PCQ

Fuente: Refinitiv

### Principales índices

	Cierre	1 D	5 D	1 M	YTD	Cap. Burs. (US\$ Mill.)
▲ IPSA (Chile)	5,460.65	0.98%	-1.93%	-6.78%	8.57%	102,504
▲ IGPA (Chile)	27,625.39	0.75%	-2.28%	-7.20%	4.68%	125,573
▲ COLSC (Colombia)	786.44	0.30%	1.00%	4.68%	-12.75%	3,252
▲ COLCAP (Colombia)	1,097.53	0.84%	1.25%	0.18%	-25.50%	59,856
▼ S&P/BVL LIMA (Peru)	21,792.38	-0.11%	-1.21%	-4.12%	12.38%	103,480
▼ S&P/BVL SEL (Peru)	562.91	-0.57%	-1.39%	-4.50%	9.48%	86,243
▼ S&P/BVL LIMA 25	29,021.51	-0.22%	-0.74%	-5.47%	4.04%	102,104
▲ IPC (México)	49,787.84	0.00%	1.25%	-4.17%	4.69%	361,028
▲ IBOVESPA (Brazil)	23,222.38	0.00%	1.45%	-1.36%	14.18%	659,354

\*Leyenda: Variación 1D: 1 Día; 5D: 5 Días; 1M: 1 Mes; YTD; Var. % a la fecha  
Fuente: Refinitiv, Bloomberg

### Monedas

	Precio	1 D*	5 D*	1 M*	YTD*
SoI (PEN)	3.75	0.00%	-2.56%	0.78%	1.54%
▲ Peso Chileno (CLP)	887.75	-0.84%	-4.88%	-0.07%	2.48%
▼ Peso Colombiano (COP)	4,019.80	-1.42%	-2.73%	1.83%	3.31%
▼ Peso Mexicano (MXN)	17.52	-1.39%	-3.48%	1.71%	-14.13%
▼ Real Brasileiro (BRL)	4.95	0.00%	-0.66%	0.37%	-1.98%

\*Leyenda: Variación 1D: 1 Día; 5D: 5 Días; 1M: 1 Mes; YTD; Var. % a la fecha  
Fuente: Refinitiv

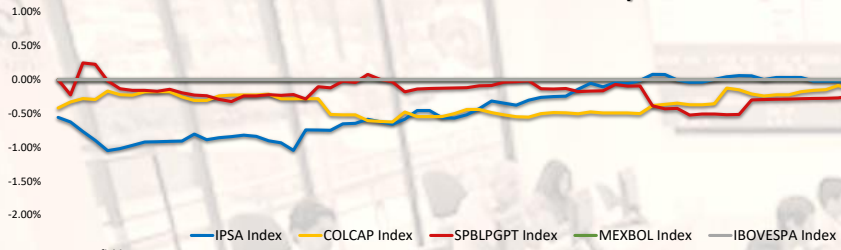
### Renta Fija

Instrumento	Moneda	Precio	Bid Yield (%)	Ask Yield (%)	Duración
PERU 7.35 07/21/25	USD	5.67	r response is no response is n	rver response is not valid.	
PERU 4.125 08/25/27	USD	5.36	95.95	516.4%	3.71
PERU 8.75 11/21/33	USD	6.22	123.08	564.9%	7.19
PERU 6.55 03/14/37	USD	6.17	107.39	566.7%	8.70
PERU 5.625 11/18/2050	USD	6.34	96.99	579.0%	13.85
CHILE 2.45 01/31/31	USD	5.56	83.62	508.4%	6.75
CHILE 3.125 01/21/26	USD	5.42	95.03	531.5%	2.32
CHILE 3.625 10/30/42	USD	6.23	76.45	560.3%	12.92
COLOM 11.85 03/09/28	USD	7.57	116.08	751.3%	3.54
COLOM 10.375 01/28/33	USD	8.30	114.28	775.2%	6.42
COLOM 7.375 09/18/37	USD	8.16	94.79	787.6%	8.55
COLOM 6.125 01/18/41	USD	8.36	80.45	813.6%	10.08
MEX 4 10/02/23	MXV	#N/A	86.58	479.0%	7.40
MEX5.55 01/45	USD	6.79	91.58	622.0%	12.31

Fuente: Refinitiv

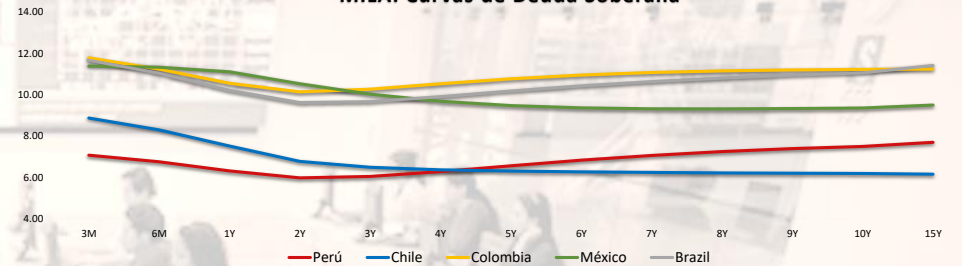
Coordinador Laboratorio de Mercado de Capitales: MS Javier Penny Pestana  
Apoyo: Nadia Contreras, Nikolas Díaz, Joseph Martinez y Marcelo Cossar

**MILA: Evolución Intraday**



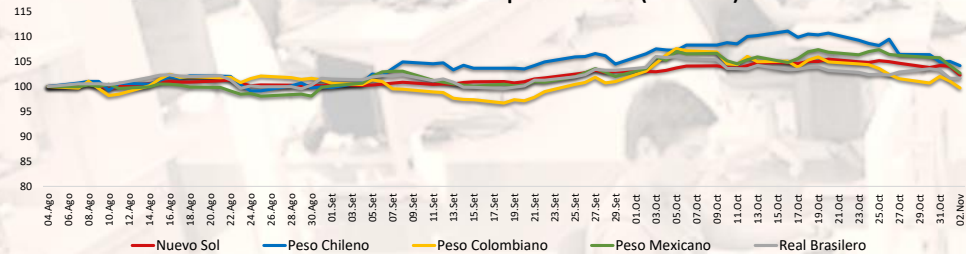
Fuente: Refinitiv

**MILA: Curvas de Deuda Soberana**



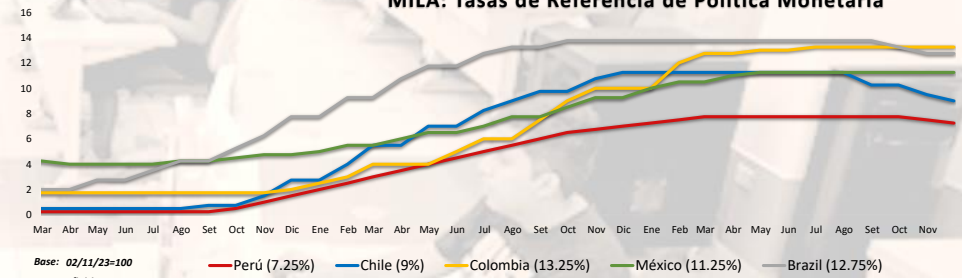
Fuente: Refinitiv

**MILA: Índices de Tipo de Cambio ( 3 meses )**



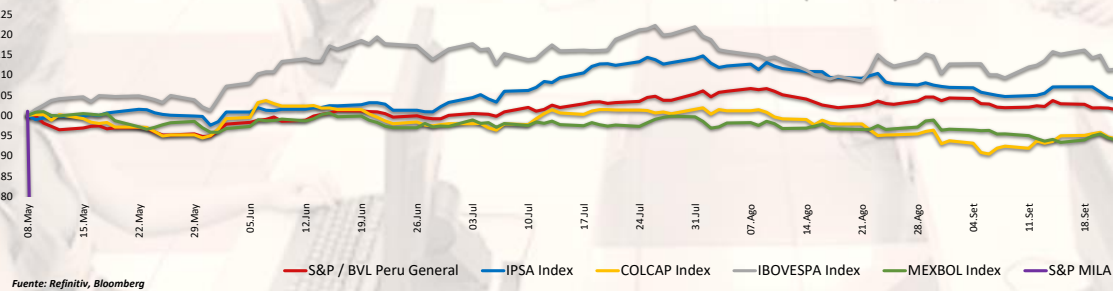
Fuente: Refinitiv

**MILA: Tasas de Referencia de Política Monetaria**



Base: 02/11/23=100  
Fuente: Refinitiv

**MILA: Indices Bursátiles (6 meses)**



Fuente: Refinitiv, Bloomberg

## MUNDO

### Estados Unidos:

The US market closed with positive returns. The DOW JONES index closed higher, where new orders for U.S. manufactured goods advanced 2.8% from the previous month to \$601.5 in September 2023, the highest since January 2021, above market expectations for a 2.4% rise and following a 1% increase. The S&P 500 index also ended with gains. In a context where the Federal Reserve kept interest rates on hold and hinted that it is done with rate hikes, and Fed Chairman Powell stressed that the central bank has not begun to consider a rate cut, and will not do so until inflation is under control. Finally, the NASDAQ index ended with positive returns. DondeRoku rallied 30.7% on the back of its strong fourth-quarter outlook. Also, Apple added 2% before releasing its results after the close of the session. Thus, DOW JONES +1.70%, S&P 500 +1.89% and NASDAQ +1.78% ended the day with positive results.

### Europa:

The main European indices ended the session with positive performances. The pan-European STOXX 600 index closed higher, against a backdrop where the Eurozone HCOB construction PMI rose slightly to 43.6 in September, but continued to point to a sharp contraction in the construction sector. Demand conditions remained weak, with new business falling at the fastest pace since May 2020. The U.K. market, reflected in the FTSE 100, closed with positive results. On the corporate front, Imperial Brands (+3.9%) was the best performer after saying it is on track to meet its full-year forecast thanks to high cigarette prices and demand for tobacco alternatives. Similarly, Tesco (+3.6%) posted strong gains, while JD Sports Fashion (-3%) performed worse. Similarly, reflected in the DAX index, the German market closed in positive territory. Banks across the country posted solid gains to enjoy some respite after this week's decline, with UniCredit, HSBC, Santander and BNP Paribas adding more than 1%. The French market closed with gains, reflecting investor caution, while bond yields showed signs of stabilizing, although they remained elevated. On the corporate front, shares in train manufacturer Alstom plunged nearly 40% after the company warned that its free cash flow for the full year would be negative. Thus, FTSE 100 +1.90%; CAC 40 +1.85%; DAX +1.48%; STOXX 600 +1.58% ended at positive levels.

### Asia:

Major Asian indices closed with mostly positive returns. The Chinese market ended with negative returns, as the surprising contraction in Chinese manufacturing activity increased concerns about the country's fragile economic recovery. In addition, notable losses were recorded in heavyweight companies such as Anhui Jianghuai (-1.5%), Longi Green Energy (-3.4%), Jushi Technologie (-18.9%), Sichuan Changhong (-5.5%) and Wuliangye Yibin (-1.2%). In line, the Hang Seng index closed higher, in a context where the Hong Kong Monetary Authority maintained its key interest rate at 5.75%, in line with the Federal Reserve. Meanwhile, the White House announced that President Biden will meet with Chinese leader Xi Jinping at the end of the month, on the sidelines of the APEC summit in San Francisco. The South Korean market ended negative on the back of measures taken to curb the weakness of the local currency and reduce volatility in the foreign exchange market. This was the lowest reading since June 2020. The Japanese market closed higher, where chip-related stocks were among the top gainers in the benchmark index, as growth stocks benefited from anticipation of lower borrowing costs. The Australian market ended higher, likely driven by gains in commodity stocks from strong prices, as investor sentiment rose on bets the U.S. Federal Reserve may have finished raising interest rates. Thus, NIKKEI +1.10%; HANG SENG +0.75%; CSI 300 -0.47%; S&P/ASX 200 +0.90%; KOSPI -0.45%; SHANGHAI COMPOSITE +1.81% ended with mostly positive returns.

## ETFs

	Mon.	Cierre	1 D	5 D	1 M	YTD	Bolsa
SPDR S&P 500 ETF TRUST	USD	430.76	1.92%	4.41%	-0.15%	17.49%	PCQ
ISHARES MSCI EMERGING MARKETS ETF	USD	37.69	1.75%	3.09%	-0.87%	-4.63%	PCQ
ISHARES IBOX \$ HIGH YIELD CORPORATE BOND ETF	USD	73.69	1.13%	1.71%	-0.24%	-0.18%	PCQ
FINANCIAL SELECT SECTOR SPDR FUND	USD	33.34	2.36%	4.09%	-1.71%	8.11%	PCQ
VANECK GOLD MINERS ETF	USD	28.26	0.53%	-0.91%	-2.25%	-8.13%	PCQ
ISHARES RUSSELL 2000 ETF	USD	169.87	2.67%	3.49%	-4.07%	3.64%	PCQ
SPDR GOLD SHARES	USD	184.12	0.33%	0.06%	3.41%	6.62%	PCQ
ISHARES 20+ YEAR TREASURY BOND ETF	USD	87.04	2.28%	2.73%	-4.04%	-22.09%	NMQ
INVESCO QQQ TRUST SERIES 1	USD	363.44	1.82%	5.76%	1.56%	33.92%	NMQ
ISHARES BIOTECHNOLOGY ETF	USD	116.82	1.40%	1.54%	-5.06%	10.40%	NMQ
ENERGY SELECT SECTOR SPDR FUND	USD	87.56	3.02%	0.98%	-1.79%	12.63%	PCQ
PROSHARES ULTRA VIX ST FUTURES ETF	USD	14.12	-5.11%	-25.25%	-10.58%	-91.67%	BTQ
UNITED STATES OIL ETF	USD	76.18	1.91%	-0.92%	-5.26%	-13.10%	PCQ
ISHARES MSCI BRAZIL ETF	USD	31.54	2.87%	3.44%	1.09%	11.57%	PCQ
SPDR S&P OIL & GAS EXP & PRODUCTION ETF	USD	148.71	2.59%	1.97%	3.39%	6.46%	PCQ
UTILITIES SELECT SECTOR SPDR FUND	USD	61.50	1.87%	2.74%	-3.01%	-6.08%	PCQ
ISHARES US REAL ESTATE ETF	USD	78.23	3.15%	4.68%	-3.04%	-10.03%	PCQ
SPDR S&P BIOTECH ETF	USD	68.26	0.98%	3.14%	-7.38%	6.71%	PCQ
ISHARES IBOX \$ INVESTMENT GRADE CORP BOND ETF	USD	101.41	1.19%	1.60%	-1.74%	-7.14%	PCQ
ISHARES JP MORGAN USD EMERGING MARKETS BOND ETF	USD	82.71	1.00%	2.16%	-0.91%	-3.23%	NMQ
REAL ESTATE SELECT SECT SPDR FUND	USD	34.30	3.10%	4.35%	-1.47%	-11.71%	PCQ
ISHARES CHIN 0	USD	25.75	1.06%	0.66%	-1.76%	-18.64%	
CONSUMER STAPLES SPDR FUND	USD	68.67	1.30%	1.73%	-2.62%	-0.59%	
VANECK JUNIOR GOLD MINERS ETF	USD	33.68	0.60%	0.60%	-1.61%	-10.21%	
SPDR BLOOMBERG HIGH YIELD BOND ETF	USD	90.22	1.10%	1.64%	-0.44%	-0.99%	PCQ
VANGUARD REAL ESTATE INDEX FUND ETF	USD	75.78	3.28%	4.65%	-2.88%	-12.94%	PCQ
DIREXION DAILY GOLD MINERS INDEX BULL 2X SHARES	USD	29.08	0.90%	-2.19%	-6.28%	-33.27%	PCQ
PROSHARES ULTRASHORT 20+ YEAR TREASURY	USD	40.06	-4.30%	-5.90%	6.91%	44.46%	PCQ
ISHARES MSCI EAFE ETF	USD	68.93	2.04%	4.38%	-1.30%	11.66%	PCQ
ISHARES PREFERRED AND INCOME SECURITIES ETF	USD	29.52	2.06%	3.29%	-2.28%	-7.81%	NMQ
WISDOMTREE JAPAN HEDGED EQUITY ETF	USD	89.77	1.32%	5.79%	0.25%	44.19%	PCQ
GRAYSCALE BITCOIN TRUST (BTC)	USD	27.17	1.03%	5.42%	42.99%	113.33%	PNK

Fuente: Refinitiv

## Principales índices

	Cierre	1 D	5 D	1 M	YTD	Cap. Burs. (US\$ Mill.)
▼ Dow Jones (EEUU)	13,294.19	-60.05%	-59.45%	-60.98%	-55.58%	#1VALORI
▲ Standard & Poor's 500 (EEUU)	4,317.78	1.89%	4.36%	-0.28%	17.75%	#1VALORI
▲ NASDAQ Composite (EEUU)	13,294.19	1.78%	5.55%	0.53%	24.87%	#1VALORI
▲ Stoxx EUROPE 600 (Europa)	443.47	1.58%	2.37%	-2.46%	10.07%	10,926.974
▲ DAX (Alemania)	27.06	1.81%	3.84%	-2.45%	10.63%	88
▲ FTSE 100 (Reino Unido)	7,446.53	1.42%	1.25%	-3.02%	5.70%	241
▲ CAC 40 (Francia)	7,060.69	1.85%	2.49%	-2.12%	19.95%	2,071.360
▲ IBOX 35 (España)	9,260.40	2.04%	3.32%	-3.02%	14.64%	544.554
▲ MSCI AC Asia Pacific Index	479.59	1.58%	1.99%	-2.60%	-8.45%	#1VALORI
▼ HANG SENG (Hong Kong)	17,230.59	0.75%	1.09%	-2.41%	-17.34%	#1VALORI
▼ SHANGHAI SE Comp. (China)	3,009.41	-0.45%	0.71%	-2.44%	-8.40%	70,951,183
▲ NIKKEI 225 (Japón)	31,949.89	1.10%	4.41%	-1.91%	20.88%	#1VALORI
▲ S&P / ASX 200 (Australia)	6,899.70	0.90%	1.28%	-2.34%	4.68%	28,957
▲ KOSPI (Corea del Sur)	2,343.12	1.81%	1.92%	-6.83%	-4.42%	6,210,790

\*Leyenda: Variación 1D: 1 Día; 5D: 5 Días; 1M: 1 Mes; YTD; Var. % a la fecha

Fuente: Refinitiv, Bloomberg

## Renta Variable

### Estados Unidos (Acciones del SPX Index)

Más Subieron	Mon.	Precio	▲%	Bolsa	Más Bajaron	Mon.	Precio	▼%	Bolsa
BATH&BODY WR O/d	USD	39.8	5.54%	NYSE	EPAM SYSTEMS I/d	USD	203.25	-21.72%	NYSE
PORWALAU-XT/d	INR	25.18	4.96%	BSE	CH ROBINSON WW/d	USD	91.4	-6.42%	NSQ
HGH WR NTWRK O/d	USD	0.1125	4.65%	PNK	LUMEN TCHNLG O/d	USD	1.91	-4.98%	NYSE
FORTINET/d	USD	71.27	4.61%	NSQ	INTEL CORP/d	USD	29.86	-4.63%	NSQ
PAYCOM SOFTWARE/d	USD	305.93	4.30%	NYSE	3M COMPANY/d	USD	97.98	-4.44%	NYSE

Fuente: Refinitiv

### Europa (Acciones del STOXX EUROPE 600)

Más Subieron	Mon.	Precio	▲%	Bolsa	Más Bajaron	Mon.	Precio	▼%	Bolsa
MISFRESH LTD D/d	USD	0.586	10.36%	NMQ	RED 5/d	AUD	0.145	-9.38%	ASX
GENIUS GROUP O/d	USD	1.0234	10.35%	ASQ	DGTL MD SL A O/d	USD	0.3801	-9.15%	NYSE
CSAI INC A ORD/d	USD	35.32	9.49%	NYSE	NORTHGOLD/d	SEK	6.25	-8.36%	STO
INDVIOR/d	GBP	1590	7.80%	LSE	MANILA BULLETT/d	PHP	0.29	-7.94%	PHS
DKN SMOND 3X B/d	USD	12.3	4.95%	PCQ	SAFEHOLD INC O/d	USD	25.01	-6.33%	NYSE

Fuente: Refinitiv

## Monedas

	Precio	1 D*	5 D*	1 M*	YTD*
▲ Euro	1.062	0.00%	0.57%	-0.36%	0.69%
▲ Yen	150.45	0.01%	0.05%	1.94%	13.80%
▲ Yuan	7.316	0.00%	0.01%	0.13%	9.15%
▼ Won coreano	1332.49	-0.08%	-1.49%	-0.49%	3.44%
▼ Libra Esterlina	1.2020	0.01%	0.63%	-0.75%	-1.21%
▼ Dólar de Hong Kong	7.8241	0.00%	0.04%	0.05%	-0.32%
▼ Dólar Australiano	0.6432	-0.03%	1.76%	0.23%	-8.69%

\*Leyenda: Variación 1D: 1 Día; 5D: 5 Días; 1M: 1 Mes; YTD; Var. % a la fecha

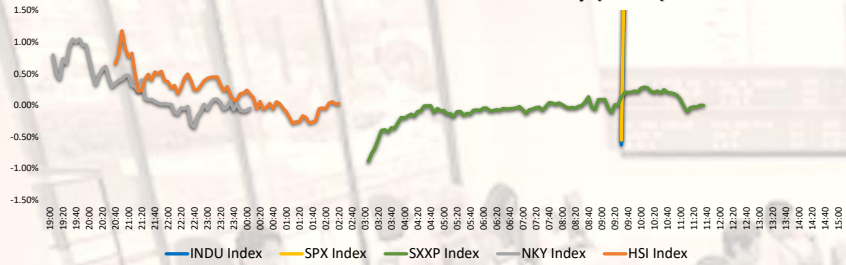
## Materias Primas

	Precio	1 D*	5 D*	1 M*	YTD*
Oro (US\$ Oz. T) (LME)	1985.61	0.01%	0.04%	3.44%	6.94%
Plata (US\$ Oz. T) (LME)	22.73	-1.13%	-0.44%	-2.78%	3.67%
Cobre (US\$ TM) (LME)	8030	0.00%	1.50%	-1.23%	-11.56%
Zinc (US\$ TM) (LME)					
Petroleo WTI (US\$ Barril) (NYM)					
Etaño (US\$ TM) (LME)					
Plomo (US\$ TM) (LME)	2095.24	0.00%	-1.75%	-4.63%	0.11%
Asúcar #11 (US\$ Libra) (NYB-ICE)	27.48	-0.11%	1.63%	0.81%	50.74%
Cacao (US\$ TM) (NYB-ICE)	27.48	-0.11%	1.63%	0.81%	50.74%
Café Arábica (US\$ TM) (NYB-ICE)	3865	1.87%	1.44%	7.51%	56.16%

\*Leyenda: Variación 1D: 1 Día; 5D: 5 Días; 1M: 1 Mes; YTD; Var. % a la fecha

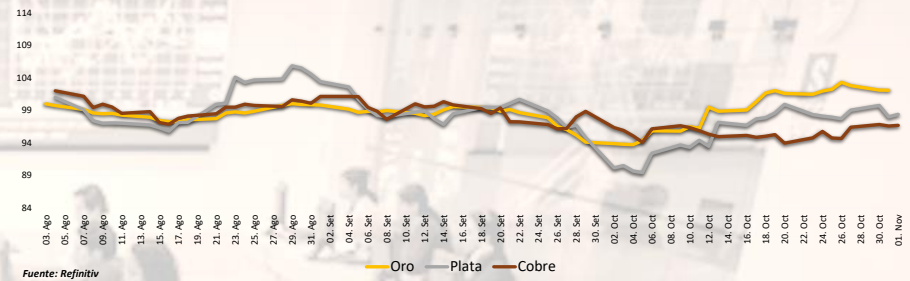
Coordinador Laboratorio de Mercado de Capitales: MS Javier Penny Pestana  
Apoyo: Nadia Contreras, Nikolas Díaz, Joseph Martínez y Marcelo Cossar  
email: pulsobursatil@ulima.edu.pe

**Mercado Evolución Intraday (var %)**



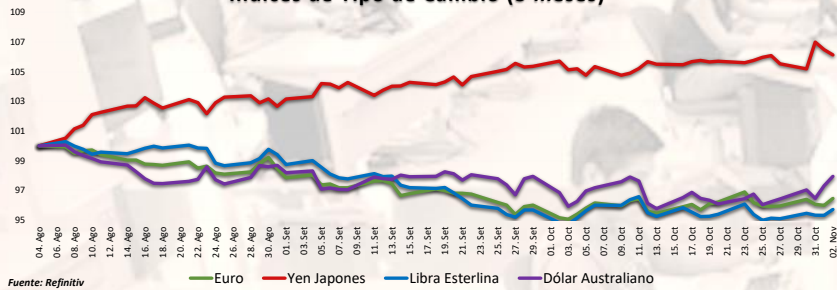
Fuente: Refinitiv, Bloomberg

**Índices de Metales principales (3 meses)**



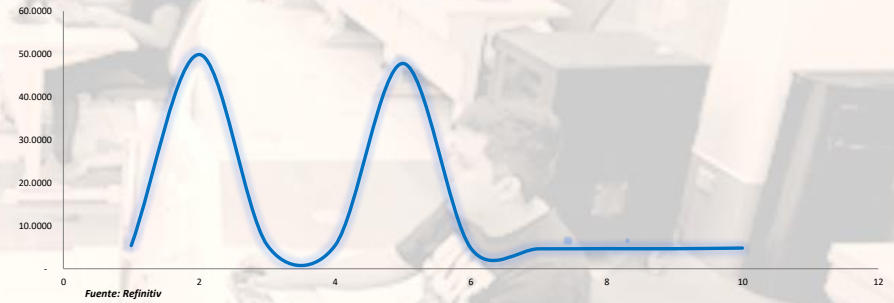
Fuente: Refinitiv

**Índices de Tipo de Cambio (3 meses)**



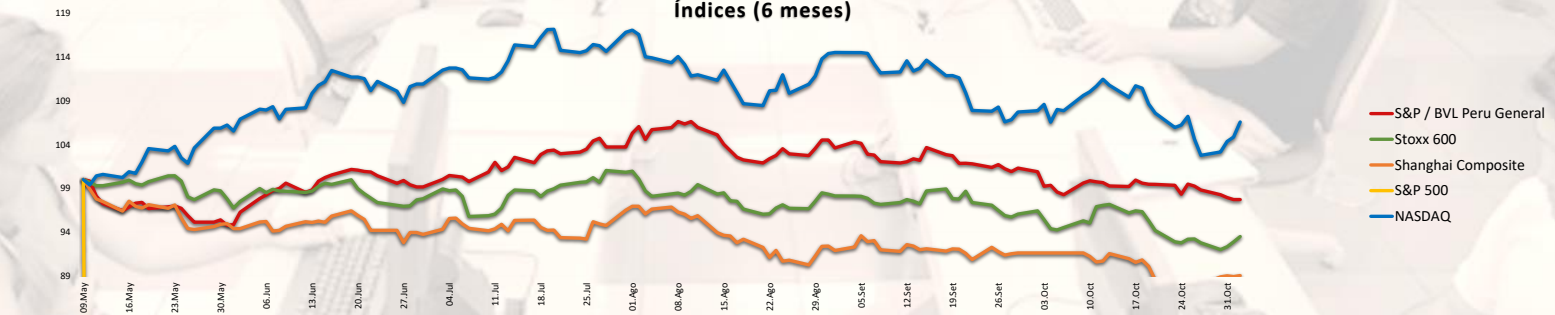
Fuente: Refinitiv

**Curva de Rendimiento Bonos Tesoro EEUU (%)**



Fuente: Refinitiv

**Índices (6 meses)**



Base: 02/11/23=100  
Fuente: Refinitiv, Bloomberg



**RANKING ACCIONES LIMA**

Código	Moneda	Precio	1 D*	5 D*	1 M*	YTD*	Frecuencia	Volumen	Beta	Rentabilidad por Dividendos (%)	Precio-Beneficio	Capitalización Bursátil (M US\$)	Sector	Participación Índice
ALICORCLIM	S/.	5.61	-3.28%	-4.92%	-9.52%	-13.27%	5.00%	r response is not response is not response is not null r response is not response is not null	0.42	6.68	83.44	13,312	Industriales	-6.18%
BACKUSILIM	S/.	22.50	2.74%	2.99%	2.23%	-3.42%	90.00%	0	0.42	6.68	83.44	13,312	Industriales	-6.18%
BAP	US\$	128.50	1.54%	0.37%	-2.44%	-5.28%	90.00%	0	1.01	4.80	7.59	25,727,086	Diversas	2.54%
BVN	S/.	1.40	0.00%	0.00%	-5.41%	-3.33%	85.00%	0	0.71	7.57	0.00	47,070	Bancos y Financieras	7.06%
CASAGRCLIM	S/.	1.40	0.00%	0.00%	-5.41%	-3.33%	85.00%	0	0.71	7.57	0.00	47,070	Bancos y Financieras	7.06%
BBVACLIM	S/.	1.40	0.00%	0.00%	-5.41%	-3.33%	85.00%	0	0.71	7.57	0.00	47,070	Bancos y Financieras	7.06%
CORAREILIM	S/.	0.90	0.00%	0.00%	-14.29%	-34.77%	80.00%	0	0.98	3.38	0.00	89	Industriales	-32.93%
CPACK	US\$	5.04	-0.20%	-1.56%	-2.33%	-2.36%	90.00%	0	0.48	11.05	21.54	37,600	Industriales	-2.73%
CVEDECLIM	US\$	30.50	-1.61%	0.99%	0.49%	7.25%	85.00%	0	1.08	5.05	8.26	9,559	Mineras	0.17%
ENGEPECLIM	S/.	3.38	-0.59%	-2.03%	-12.21%	-0.47%	90.00%	0	0.69	9.91	0.00	1,107	Servicios Públicos	41.36%
ENHSPECLIM	US\$	30.50	-1.61%	0.99%	0.49%	7.25%	85.00%	0	1.08	5.05	8.26	9,559	Mineras	0.17%
FERREYCLIM	S/.	2.35	-0.84%	2.17%	0.10%	16.09%	90.00%	0	0.99	9.54	5.64	102,298	Diversas	9.15%
AENZACLIM	S/.	0.60	0.00%	0.00%	-6.25%	-27.71%	65.00%	0	0.63	0.00	0.00	5,503	Diversas	-57.85%
IFS	US\$	18.80	1.08%	-1.47%	-20.41%	-20.00%	90.00%	0	1.09	4.96	5.97	141,552	Diversas	-0.84%
INRETCILIM	US\$	31.00	0.98%	0.98%	-1.59%	-3.64%	80.00%	0	0.73	2.43	14.34	82,998	Diversas	-11.04%
LUSURCLIM	S/.	15.00	0.00%	-3.85%	-5.42%	4.36%	85.00%	0	0.56	7.60	0.00	2,500	Servicios Públicos	-2.18%
MINSURILIM	S/.	3.65	-2.39%	0.66%	0.66%	9.16%	90.00%	0	1.08	9.70	20.67	10,207	Mineras	-14.83%
SCCO.K	US\$	73.86	2.71%	4.56%	-1.16%	22.31%	90.00%	0	1.30	5.07	18.98	81,515,813	Mineras	51.68%
SIDERCLIM	S/.	1.03	4.04%	0.98%	-5.50%	-36.02%	85.00%	0	0.83	44.85	0.00	9,261	Industriales	-30.86%
UNACEMCLIM	S/.	2.78	0.00%	0.00%	0.72%	10.83%	10.00%	0	-0.02	4.03	0.00	1,187	Diversas	1.33%
VOICABCLIM	S/.	2.78	0.00%	0.00%	0.72%	10.83%	10.00%	0	-0.02	4.03	0.00	1,187	Diversas	1.33%
BROCALCLIM	S/.	1.40	0.00%	0.00%	-5.41%	-3.33%	85.00%	0	0.71	7.57	0.00	47,070	Bancos y Financieras	7.06%
CORARECLIM	S/.	1.40	0.00%	0.00%	-5.41%	-3.33%	85.00%	0	0.71	7.57	0.00	47,070	Bancos y Financieras	7.06%
ENGEICLIM	S/.	3.65	0.83%	1.39%	3.40%	-46.37%	90.00%	0	0.93	8.51	4.95	1,598	Servicios Públicos	-22.26%
GBVACLIM	S/.	0.60	0.00%	0.00%	-6.25%	-27.71%	65.00%	0	0.63	0.00	0.00	5,503	Diversas	-57.85%

Cantidad de Acciones: 25  
Fuente: Refinitiv

Subieron  
Bajaron  
Mantuvieron

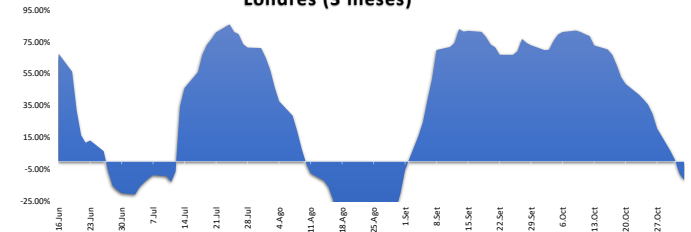
\*\* PER se utiliza en el mercado de valores y moneda original del instrumento  
\*Leyenda: Variación 1D: 1 Día; 5D: 5 Días; 1M: 1 Mes; YTD: Var. % a la fecha

**Índices Sectoriales**

	Cierre	1 D*	5 D*	1 M*	YTD*	Beta
S&P/BVL Consumer Index	1,165.75	-0.51%	-1.09%	-1.94%	-5.49%	0.21
S&P/BVL Industrial Index	232.31	-0.42%	-0.10%	-3.03%	-5.89%	0.17
S&P/BVL Financials Index	934.29	0.77%	-1.89%	1.61%	-2.26%	1.49
S&P/BVL Construction Index	205.37	-0.17%	-1.45%	-6.25%	-15.52%	0.05
S&P/BVL Public Services Index	1,058.43	0.25%	-0.13%	-2.25%	36.72%	0.30
S&P/BVL Mining Index	452.85	0.09%	0.24%	-2.39%	14.63%	1.83
S&P/BVL Electric Utilities Index	1,033.30	0.26%	-0.13%	-2.24%	36.72%	0.30

\*Leyenda: Variación 1D: 1 Día; 5D: 5 Días; 1M: 1 Mes; YTD: Var. % a la fecha  
Fuente: Refinitiv

**Correlación Rend. Índice Minero vs Índice de Metales de Londres (3 meses)**



Fuente: Refinitiv

**Rating Crédito Latinoamérica**

**CLASIFICACIONES DE RIESGO**

País	Moody/s	Fitch	S&P
Perú	Server respo #N/A Reque: #N/A	Requesting Data...	Requesting Data...
México	Server respo #N/A Reque: #N/A	Requesting Data...	Requesting Data...
Venezuela	Server respo #N/A Reque: #N/A	Requesting Data...	Requesting Data...
Brazil	Server respo #N/A Reque: #N/A	Requesting Data...	Requesting Data...
Colombia	Server respo #N/A Reque: #N/A	Requesting Data...	Requesting Data...
Chile	Server respo #N/A Reque: #N/A	Requesting Data...	Requesting Data...
Argentina	Server respo #N/A Reque: #N/A	Requesting Data...	Requesting Data...
Panamá	Server respo #N/A Reque: #N/A	Requesting Data...	Requesting Data...

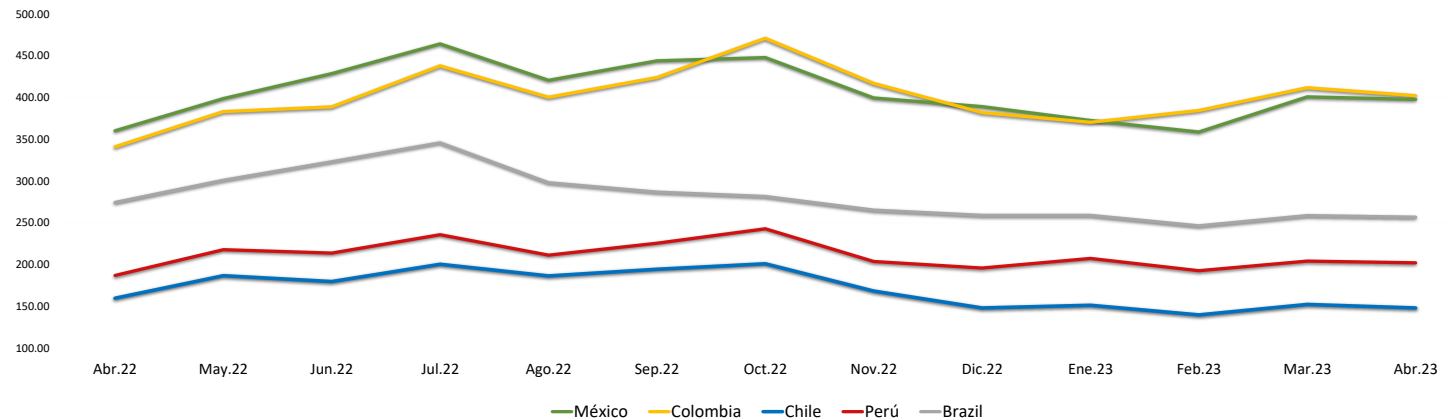
Fuente: Refinitiv, Bloomberg

**Leyenda**

	Moody/s	Fitch	S&P
Prime	Aaa	Aaa	Aaa
Alto Grado	Aa1	Aa+	Aa+
	Aa2	Aa	Aa
	Aa3	Aa-	Aa-
Grado Alto Medio	A1	A+	A+
	A2	A	A
	A3	A-	A-
Sin Grado Medio	Ba1	Bb+	Bb+
	Ba2	Bb	Bb
	Ba3	Bb-	Bb-
Riesgo Sustancial	B1	B+	B+
	B2	B	B
	B3	B-	B-
Riesgo Sustancial	Caa1	Ccc+	Ccc+
	Caa2	Ccc	Ccc
	Caa3	Ccc-	Ccc-
0	Ca	Cc	Cc
		C	
0		Rd	Sd
0	C	Ddd	D
		Dd	
Sin Clasificar	WR		NR

Fuente: Refinitiv, Bloomberg

**Riesgo País Latinoamérica (pbs)**



	Abr.22	May.22	Jun.22	Jul.22	Ago.22	Sep.22	Oct.22	Nov.22	Dic.22	Ene.23	Feb.23	Mar.23	Abr.23
Perú	186.67	217.55	213.55	235.43	211.00	225.27	242.59	203.41	195.50	207.05	192.30	203.83	201.90
Brazil	274.06	300.64	322.82	345.48	297.70	286.56	281.30	264.90	258.64	258.64	246.10	258.35	256.55
Chile	159.44	186.32	179.32	200.10	186.09	194.05	200.69	167.97	147.82	150.95	139.45	152.00	147.75
Colombia	340.78	383.05	388.73	437.86	400.26	423.83	470.84	416.81	381.77	370.18	384.35	411.61	402.15
México	360.00	398.59	428.41	464.10	420.43	443.77	447.72	399.31	389.00	372.32	358.55	400.70	397.60

Fuente: BCRP

Coordinador Laboratorio de Mercado de Capitales: MS Javier Penny Pestana  
Apoyo: Nadia Contreras, Nikolas Diaz, Joseph Martinez y Marcelo Cossar  
email: pulsoBursatil@ulima.edu.pe