

LATAM

Lima, November 13, 2023

Peru: The LSE General index ended today's session with a negative result of -1.30%. The index maintains a positive cumulative annual trend of +0.96% in local currency and a positive cumulative trend of +0.87% in dollar-adjusted currency. With respect to the S&P/BVL Peru SEL, it varied by -1.46% while the S&P/BVL LIMA 25 by -0.67%. The spot PEN reached S/.3.8093. **Headline:** Lithium in Peru: Korean corporation will invest to develop mine in Peru.

Chile: The IPSA index ended the day with a positive return of +1.93%. The most benefited sectors of the day were Industrials (+5.86%) and Real Estate (+2.71%). The best performing stocks were Sociedad de Inversiones Oro (+9.98%) and Sociedad Química y Minera de Chile (+9.36%). **Headline:** October retail sales fall further despite Cyberday.

Colombia: The COLCAP index ended the session with a negative return of -0.14%. The least benefited sectors of the day were Utilities (-1.43%) and Consumer Staples (-0.78%). The worst performing stocks were Canacol Energy Ltd (-3.37%) and Interconexión Eléctrica SA ESP (-2.86%). **Headline:** What's ahead for Colombians in terms of rates, inflation and dollar in 2024.

Mexico: The IPC index closed the day in negative territory of -0.33%. The least benefited sectors of the day were Finance (-0.75%) and Health (-3.00%). The worst performing stocks were Grupo Aeroportuario del Centro (-3.96%) and Controladora Vuela Cia de Avia (-3.76%). **Headline:** Minimum wage 2024: This is the increase proposed by Mexico's 'bosses'.

Brazil: The IBOVESPA index closed the day in negative territory at -0.13%. The least benefited sectors of the day were Health Care (-2.08%) and Industrials (-1.45%). The worst performing stocks were BM&FBovespa SA (-4.09%) and Magazine Luiza SA (-3.89%). **Headline:** Pacheco says that Haddad's guidelines must be followed and that Parliament will contribute to zero deficit.

Main Indexes

	Close	1 D	5 D	1 M	YTD	Market Cap. (US\$ Mill.)
▲ IPSA (Chile)	5,726.94	1.93%	2.72%	-0.50%	14.91%	104,484
▲ IGPA (Chile)	28,983.63	2.20%	3.05%	-0.94%	9.62%	127,146
▲ COLSC (Colombia)	769.69	0.00%	-1.62%	0.51%	-10.77%	3,295
▲ COLCAP (Colombia)	1,102.93	0.00%	0.38%	-0.89%	-19.26%	60,179
▼ S&P/BVL LIMA (Peru)	21,534.21	-1.30%	-0.16%	-2.82%	14.45%	102,106
▼ S&P/BVL SEL (Peru)	563.63	-1.46%	0.27%	-2.55%	15.23%	85,178
▼ S&P/BVL LIMA 25	29,100.89	-0.67%	0.44%	-3.44%	9.01%	100,725
▼ IPC (México)	51,090.91	-0.33%	-1.05%	-0.33%	5.79%	376,431
IBOVESPA (Brazil)	24,532.37	-0.2%	1.2%	8.0%	27.5%	703,446

*Legend: Variation 1D: 1 day; 5D: 5 days; 1M: 1 Month; YTD: Var% to date
Source: Refinitiv, Bloomberg

Currency

	Price	1 D*	5 D*	1 M*	YTD*
Sol (PEN)	3.79	0.00%	0.97%	0.35%	0.85%
▲ Peso Chileno (CLP)	922.46	0.00%	4.55%	1.58%	0.25%
▲ Peso Colombiano (COP)	4,024.00	0.00%	1.16%	-3.26%	-2.42%
▲ Peso Mexicano (MXN)	17.60	0.01%	0.31%	-0.37%	-11.61%
▲ Real Brasileiro (BRL)	4.91	0.00%	0.45%	-3.03%	-6.28%

*Legend: Variation 1D: 1 day; 5D: 5 days; 1M: 1 Month; YTD: Var% to date
Source: Refinitiv

Fixed Income

Instrument	Currency	Price	Bid Yield (%)	Ask Yield (%)	Duration
PERU 7.35 07/21/25	USD	5.76	102.46	545.1%	1.59
PERU 4.125 08/25/27	USD	5.71	95.04	549.6%	3.50
PERU 8.75 11/21/33	USD	6.36	118.03	626.6%	6.90
PERU 6.55 03/14/37	USD	6.25	102.56	619.0%	8.61
PERU 5.625 11/18/2050	USD	6.34	90.71	628.6%	13.21
CHILE 2.45 01/31/31	USD	5.58	81.76	550.2%	6.53
CHILE 3.125 01/21/26	USD	5.36	95.36	535.0%	2.11
CHILE 3.625 10/30/42	USD	6.25	70.98	621.1%	12.75
COLOM 11.85 03/09/28	USD	7.65	115.16	758.3%	3.51
COLOM 10.375 01/28/33	USD	8.13	114.35	770.5%	6.22
COLOM 7.375 09/18/37	USD	8.19	93.33	806.0%	8.63
COLOM 6.125 01/18/41	USD	8.44	79.54	826.4%	9.81
MEX 4 10/02/23	MXV	5.11	85.64	509.0%	7.17
MEX5.55 01/45	USD	6.87	85.48	680.9%	11.76

Source: Refinitiv

Equity

Largest Gains	Exchange	Curr.	Price	▲ %
ENEL CHILE SA	SGO	CLP	47.35	2.93%
WALMART DE MEXIC	MEX	MXN	69.25	2.90%
PARQUE ARAUCO	SGO	CLP	1,175.00	2.79%
BANCOLOMBIA-PREF	COL	COP	31,400.00	2.61%
GRUPO ENERGIA BO	COL	COP	1,879.00	2.12%

Source: Refinitiv

Largest Losses	Exchange	Curr.	Price	▼ %
AERO DEL PA MEX	MEX	MXN	305	-2.08%
EMPRESAS COPEC	SGO	CLP	5,880	-2.00%
ENTEL SGO	SGO	CLP	3,125	-1.88%
SONDA SA	SGO	CLP	406	-1.79%
GRUPO AERC MEX	MEX	MXN	181	-1.63%

Source: Refinitiv

Per Turnover	Exchange	Amount (US\$)
GRUPO F BANORT-O	MEX	59,235.74
WALMART DE MEXIC	MEX	50,463.90
FOMENTO ECON-UBD	MEX	19,981.68
ARCA CONTINENTAL	MEX	19,752.40
CEMEX SAB-CPO	MEX	15,477.23

Source: Refinitiv

Per Volume	Exchange	Volume
COLBUN SA	SGO	78,632,853.00
ENEL CHILE SA	SGO	65,756,703.00
BANCO DE CHILE	SGO	53,888,083.00
BANCO SANTANDER	SGO	52,427,692.00
ENEL AMERICAS SA	SGO	30,212,563.00

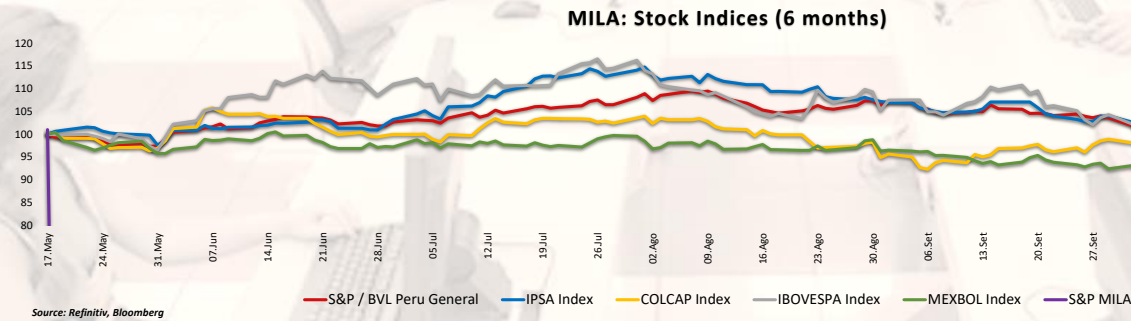
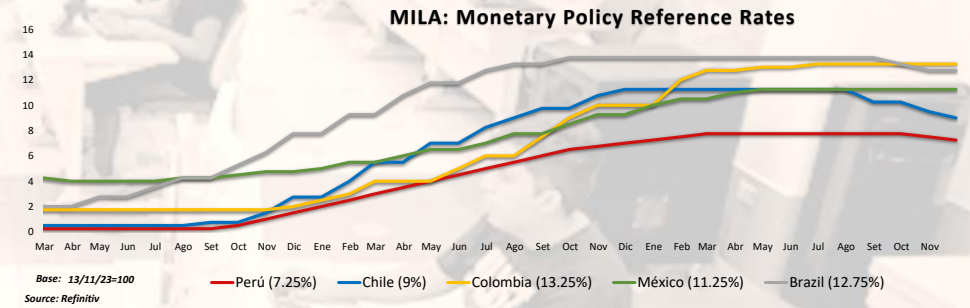
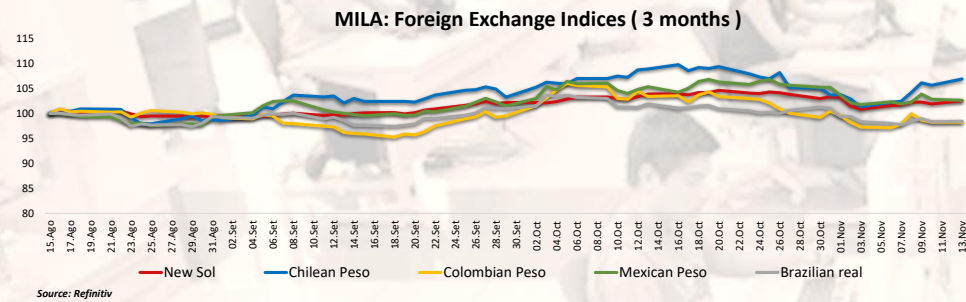
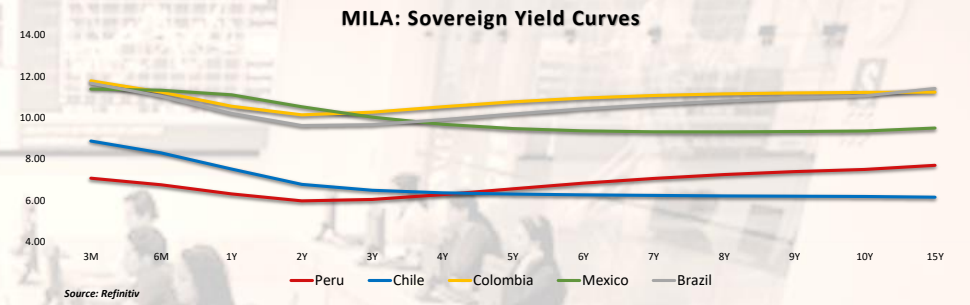
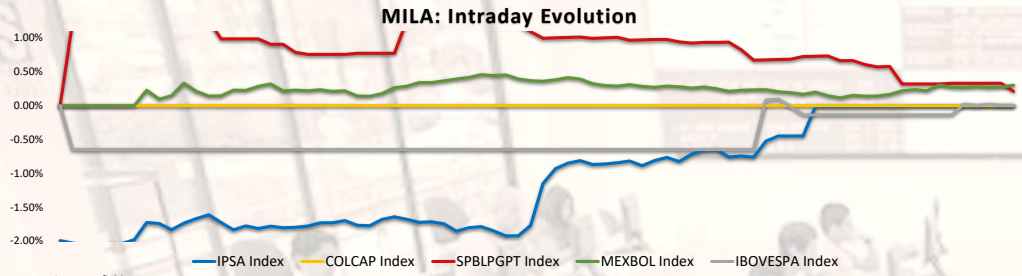
Source: Refinitiv

ETFs

	Curr.	Close	1 D	5 D	1 M	YTD	Exchange
▼ ISHARES MSCI ALL PERU CAPPED	USD	28.93	-1.08%	-2.54%	-1.35%	9.25%	PCQ
▲ ISHARES MSCI CHILE CAPPED	USD	24.70	0.08%	-2.60%	-2.37%	-0.64%	BTQ
▼ GLOBAL X MSCI COLOMBIA	USD	20.72	-0.43%	-0.83%	0.22%	-23.08%	PCQ
▲ ISHARES MSCI MEXICO CAPPED	USD	151.43	-1.10%	-1.76%	2.28%	23.87%	LSE
▼ ISHARES MSCI EMERGING MARKETS	USD	38.34	-0.03%	-1.11%	1.54%	-5.80%	PCQ
▲ VANGUARD FTSE EMERGING MARKETS	CAD	32.73	0.28%	0.37%	1.96%	0.06%	TOR
▲ ISHARES CORE MSCI EMERGING MARKETS	USD	48.04	0.04%	-1.11%	1.46%	-3.51%	PCQ
▼ ISHARES IP MORGAN EMERGING MARKETS BONDS	USD	82.34	-0.53%	-0.59%	1.32%	-3.48%	NMQ
▼ MORGAN STANLEY EMERGING MARKETS DOMESTIC	USD	4.51	-0.44%	0.00%	5.37%	-0.66%	NYQ
▼ ISHARES MSCI BRAZIL ETF	USD	32.33	-0.22%	0.97%	7.52%	15.88%	PCQ

Source: Refinitiv

Capital Market Laboratory Coordinator: MS Javier Penny Pestana
Collaboration: Nadia Contreras, Nikolas Díaz, Joseph Martinez y Marcelo Cossar
email: pulsohorsatil@ulima.edu.pe



Capital Market Laboratory Coordinator: MS Javier Penny Pestana
Collaboration: Nadia Contreras, Níkolás Díaz, Joseph Martínez y Marcelo Cossar
email: pulsobursatil@ulima.edu.pe

WORLD

United States:

The US market closed with positive returns. The DOW JONES finished in the green, Large-cap stocks, such as Alphabet, Microsoft, Amazon and Meta, rose between 1.2% and 3.9%. McDonald's shares rose 1.7% after the company's revenue and earnings beat market forecasts. The S&P 500 index also ended with positive returns, investors braced for the Federal Reserve's decision and Apple's earnings this week as they weighed the latest batch of corporate results. Technology, financials and consumer discretionary sectors were the top performers. Finally, the NASDAQ index ended the day higher. Western Digital gained 6.2% after the company announced that it would split into two separate publicly traded companies after talks to merge with Kioxia Holdings failed. On the other hand, Tesla lost 4.8% and ON Semiconductor plunged 21.7% after presenting a bleak outlook for its fourth quarter. Thus, DOW JONES +1.58%, S&P 500 +1.20%, NASDAQ +1.16% with the market having positive returns.

Europe:

Major European indices ended the session with mixed performances. The pan-European STOXX 600 index closed higher, driven by healthcare stocks, as bond yields fell as investors assessed key inflation data. The UK market, reflected in the FTSE 100 closed with a positive performance, as investors reflected on upbeat corporate results and awaited a series of key central bank monetary policy announcements to be released this week. Similarly, the German market, reflected in the DAX index closed in positive territory, due to new data revealing a milder-than-expected contraction in Germany's GDP and easing inflationary pressures. The French market closed in positive territory after Sanofi scrapped its 2025 earnings forecast. Thus, FTSE 100 +0.50%; CAC 40 +0.44%; DAX +0.20%; STOXX 600 +0.36% ended at mixed levels.

Asia:

Major Asian indices closed with mixed performances. The Chinese market ended lower, as anticipation ahead of a summit between the top leaders of the world's two largest economies later this week lifted risk sentiment. On the other hand, the Hang Seng index closed positive, driven by the technology sector which rose 2.3%. The South Korean market ended in negative territory. The Japanese market closed in positive territory, as investors reacted to data showing that Japan's producer inflation slowed for the tenth consecutive month in October. The Australian market ended with losses as investors cautiously awaited a series of economic reports that could influence the outlook for monetary policy in Australia. Thus, NIKKEI +0.05%; HANG SENG +1.30%; CSI 300 -0.20%; S&P/ASX 200 -0.40%; KOSPI -0.24%, SHANGHAI COMPOSITE +0.25% ended with mixed performances.

ETFs

	Curr.	Close	1 D	5 D	1 M	YTD	Exchange
SPDR S&P 500 ETF TRUST	USD	440.19	-0.10%	1.03%	3.01%	13.28%	PCQ
ISHARES MSCI EMERGING MARKETS ETF	USD	38.34	-0.03%	-1.11%	1.54%	-5.80%	PCQ
ISHARES IBOXX \$ HIGH YIELD CORPORATE BOND ETF	USD	73.99	-0.09%	-0.16%	1.51%	-0.79%	PCQ
FINANCIAL SELECT SECTOR SPDR FUND	USD	33.86	-0.15%	0.53%	2.95%	5.06%	PCQ
VANECK GOLD MINERS ETF	USD	27.04	-0.77%	-7.24%	4.04%	-8.25%	PCQ
ISHARES RUSSELL 2000 ETF	USD	169.17	0.04%	-1.82%	-2.81%	-3.74%	PCQ
SPDR GOLD SHARES	USD	180.51	0.56%	-1.55%	6.40%	6.24%	PCQ
ISHARES 20+ YEAR TREASURY BOND ETF	USD	87.79	-0.23%	1.16%	0.99%	-21.34%	NMQ
INVESCO QQQ TRUST SERIES 1	USD	377.21	-0.31%	2.17%	4.42%	28.98%	NMQ
ISHARES BIOTECHNOLOGY ETF	USD	115.42	-0.10%	-3.34%	-4.33%	-3.91%	NMQ
ENERGY SELECT SECTOR SPDR FUND	USD	84.01	0.72%	-1.97%	-5.17%	14.00%	PCQ
PROSHARES ULTRA VIX ST FUTURES ETF	USD	12.20	-1.53%	-5.86%	-24.97%	-91.10%	BTQ
UNITED STATES OIL ETF	USD	72.92	1.57%	-2.66%	-8.15%	-12.07%	PCQ
ISHARES MSCI BRAZIL ETF	USD	32.33	-0.22%	0.97%	7.52%	15.88%	PCQ
SPDR S&P OIL & GAS EXP & PRODUCTION ETF	USD	138.26	0.79%	-3.78%	-3.30%	8.38%	PCQ
UTILITIES SELECT SECTOR SPDR FUND	USD	59.60	-1.19%	-3.40%	6.07%	-14.33%	PCQ
ISHARES US REAL ESTATE ETF	USD	77.55	-0.82%	-1.80%	1.11%	-17.35%	PCQ
SPDR S&P BIOTECH ETF	USD	67.28	0.49%	-3.72%	-4.77%	-12.40%	PCQ
ISHARES IBOXX \$ INVESTMENT GRADE CORP BOND ETF	USD	102.18	0.01%	0.80%	1.48%	-6.33%	PCQ
ISHARES JP MORGAN USD EMERGING MARKETS BOND ETF	USD	82.34	-0.53%	-0.59%	1.32%	-3.48%	NMQ
REAL ESTATE SELECT SECT SPDR FUND	USD	34.10	-0.84%	-1.53%	1.94%	-18.15%	PCQ
ISHARES CHINA LARGE-CAP ETF	USD	26.02	1.32%	-1.55%	-1.33%	-23.74%	PCQ
CONSUMER STAPLES SPDR FUND	USD	69.18	0.32%	0.46%	1.23%	4.78%	PCQ
VANECK JUNIOR GOLD MINERS ETF	USD	32.56	-0.91%	-7.10%	4.90%	-7.60%	PCQ
SPDR BLOOMBERG HIGH YIELD BOND ETF	USD	90.55	-0.18%	-0.41%	1.35%	-1.80%	PCQ
VANGUARD REAL ESTATE INDEX FUND ETF	USD	74.96	-0.83%	-1.97%	0.93%	-19.38%	PCQ
DIREXION DAILY GOLD MINERS INDEX BULL 2X SHARES	USD	26.55	-1.41%	-14.02%	6.54%	-33.76%	PCQ
PROSHARES ULTRASHORT 20+ YEAR TREASURY	USD	39.34	0.54%	-2.50%	-2.94%	42.23%	PCQ
ISHARES MSCI EAFE ETF	USD	69.28	0.26%	-0.04%	2.02%	9.10%	PCQ
ISHARES PREFERRED AND INCOME SECURITIES ETF	USD	29.69	0.52%	-0.45%	0.24%	-10.02%	NMQ
WISDOMTREE JAPAN HEDGED EQUITY ETF	USD	89.94	0.29%	0.27%	2.44%	42.92%	PCQ
GRAYSCALE BITCOIN TRUST (BTC)	USD	29.06	-3.05%	7.83%	49.41%	115.10%	PNK

Source: Refinitiv

Main Indexes

	Close	1 D	5 D	1 M	YTD	Market Cap. (US\$ Mill.)
▼ Dow Jones (E EUU)	13,767.74	-59.84%	-59.62%	-58.82%	-56.21%	# VALOR!
▼ Standard & Poor's 500 (E EUU)	4,411.55	-0.08%	1.04%	2.87%	13.11%	# VALOR!
▼ NASDAQ Composite (E EUU)	13,767.74	-0.22%	1.84%	3.46%	19.46%	# VALOR!
▲ Stoxx EUROPE 600 (Europa)	446.62	0.75%	0.70%	0.23%	7.60%	551,693,348
▲ DAX (Alemania)	27.57	0.55%	1.25%	2.87%	11.62%	204
▲ FTSE 100 (Reino Unido)	7,425.83	0.89%	0.11%	-1.13%	2.31%	546
▲ CAC 40 (Francia)	7,087.06	0.60%	1.05%	0.27%	17.19%	2,622,664
▲ IBSX 35 (España)	9,461.70	0.96%	2.38%	1.53%	14.79%	793,211
▲ MSCI AC Asia Pacific Index	486.68	0.00%	-2.55%	-1.00%	-9.51%	# VALOR!
▲ HANG SENG (Hong Kong)	17,426.21	1.30%	-3.01%	-2.15%	-21.61%	# VALOR!
▲ SHANGHAI SE Comp. (China)	3,046.53	0.25%	-0.39%	# VALOR!	-9.84%	47,210,220
▲ NIKKEI 225 (Japón)	32,585.11	0.05%	-0.38%	2.60%	21.26%	# VALOR!
▼ S&P / ASX 200 (Australia)	6,948.80	-0.40%	-0.69%	-1.20%	3.62%	29,143
▲ KOSPI (Corea del Sur)	2,403.76	-0.24%	-3.94%	# VALOR!	0.08%	4,507,503

*Legend: Variation 1D: 1 day; 5D: 5 days; 1M: 1 Month; YTD: Var% to date

Source: Refinitiv, Bloomberg

Equity

United States (Stocks from SPX Index)

Largest Gains	Curr.	Price	▲%	Exchange	Largest Losses	Curr.	Price	▼%	Exchange
BATH&BODY WR O/d	USD	39.8	5.54%	NYSE	EPAM SYSTEMS I/d	USD	203.25	-21.72%	NYSE
PORVALAU-XI/d	INR	25.18	4.96%	BSE	CH ROBINSON WW/d	USD	91.4	-6.42%	NSQ
HGH WR NTWRK O/d	USD	0.1125	4.65%	PNK	LUMEN TCHNLG O/d	USD	1.91	-4.98%	NYSE
FORTINET/d	USD	71.27	4.61%	NSQ	INTEL CORP/d	USD	29.86	-4.63%	NSQ
PAYCOM SOFTWARE/d	USD	305.93	4.30%	NYSE	3M COMPANY/d	USD	97.98	-4.44%	NYSE

Source: Refinitiv

Europe (Stocks from STOXX EUROPE 600)

Largest Gains	Curr.	Price	▲%	Exchange	Largest Losses	Curr.	Price	▼%	Exchange
MIFRESH LTD D/d	USD	0.586	10.36%	NMQ	RED 5/d	AUD	0.145	-9.38%	ASX
GENIUS GROUP O/d	USD	1.0234	10.35%	ASQ	DGTL MD SL A O/d	USD	0.3801	-9.15%	NYSE
CAAI INC A ORD/d	USD	35.32	9.49%	NYSE	NORTHGOLD/d	SEK	6.25	-8.36%	STO
INDIVIOR/d	GBP	1590	7.80%	LSE	MANILA BULLETI/d	PHP	0.29	-7.94%	PHS
DKN SMCOND 3X B/d	USD	12.3	4.95%	PCQ	SAFEHOLD INC O/d	USD	25.01	-6.33%	NYSE

Source: Refinitiv

Currency

	Price	1 D*	5 D*	1 M*	YTD*
▼ Euro	1.0696	-0.01%	-0.18%	2.10%	1.07%
▼ Yen	151.69	-0.01%	1.08%	1.23%	12.01%
▲ Yuan	7.2884	0.00%	0.26%	-0.17%	8.95%
▼ Won Koreano	1318.64	-0.04%	1.57%	-2.74%	2.51%
▼ Libra Esterlina	1.2275	-0.02%	-0.53%	1.56%	0.09%
▲ Dólar de Hong Kong	7.8081	0.00%	-0.16%	-0.31%	-0.49%
▲ Dólar Australiano	0.6372	-0.13%	-1.79%	0.16%	-7.96%

*Legend: Variation 1D: 1 day; 5D: 5 days; 1M: 1 Month; YTD: Var% to date

Commodities

	Price	1 D*	5 D*	1 M*	YTD*
Oro (US\$ Oz. T) (LME)	1945.8011	0.00%	-1.61%	6.48%	6.75%
Plata (US\$ Oz. T) (LME)	22.35	0.60%	-2.95%	6.07%	5.72%
Cobre (US\$ TM) (LME)	7954.69	0.00%	-2.49%	-0.29%	-5.52%
Zinc (US\$ TM) (LME)	2557.35	0.00%	-0.21%	-0.92%	-24.43%
Petroleo WTI (US\$ Barril) (NYM)	78.26	1.41%	-3.17%	-10.22%	-8.59%
Etaño (US\$ TM) (LME)	24339	0.00%	-0.32%	4.92%	-11.19%
Plomo (US\$ TM) (LME)	2183.83	0.00%	0.29%	0.99%	8.84%
Asúcar #11 (US\$ Libra) (NYB-ICE)	27.71	1.54%	-0.86%	5.16%	54.03%
Cacao (US\$ TM) (NYB-ICE)	27.71	1.54%	-0.86%	5.16%	54.03%
Café Arábica (US\$ TM) (NYB-ICE)	4064	1.25%	3.12%	15.68%	63.80%

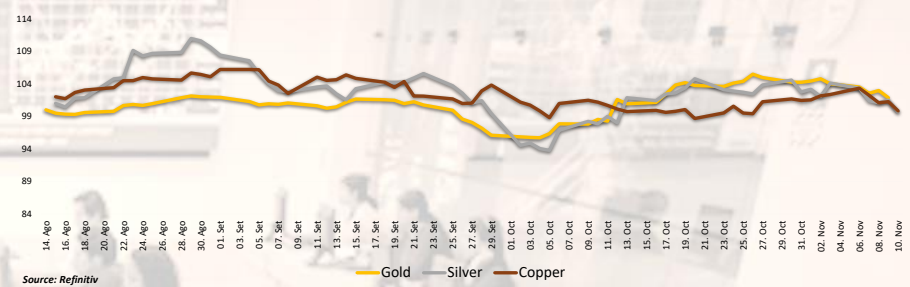
*Legend: Variation 1D: 1 day; 5D: 5 days; 1M: 1 Month; YTD: Var% to date

Market Intraday Evolution (var %)



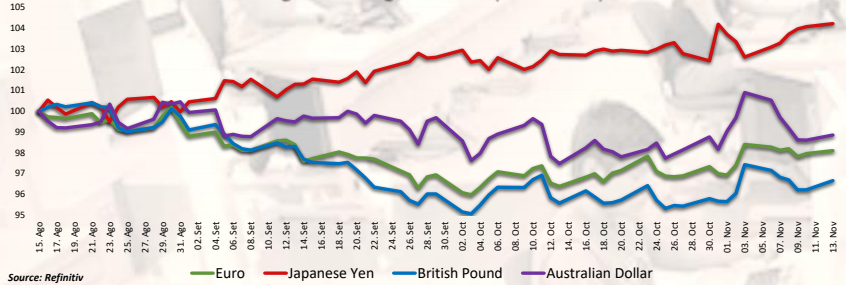
Source: Refinitiv, Bloomberg

Principal Metals Index (3 months)



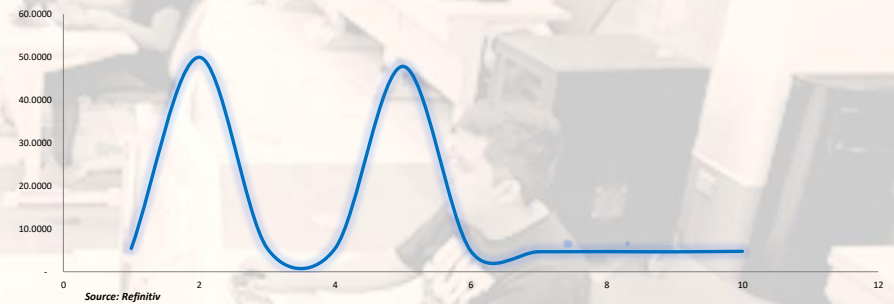
Source: Refinitiv

Foreign Exchange Indices (3 months)



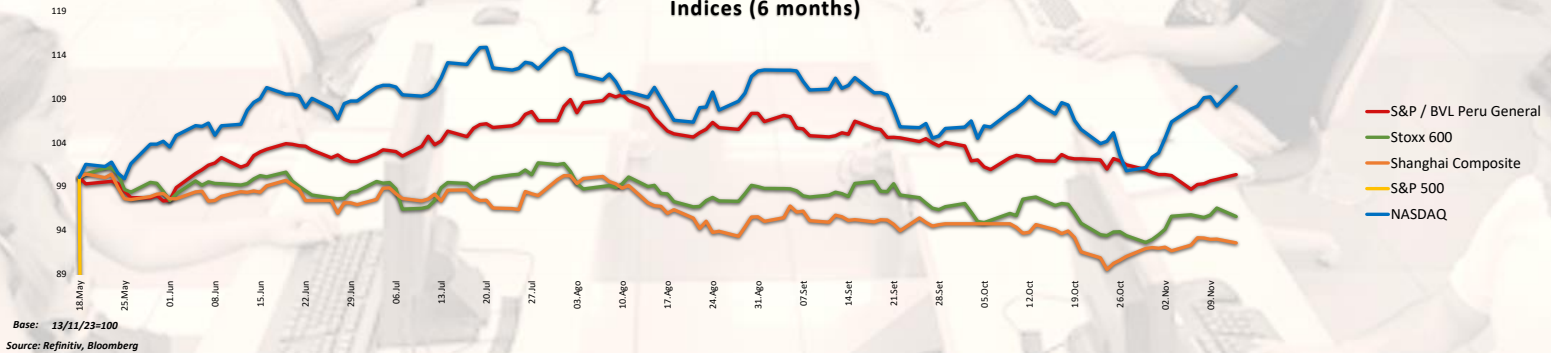
Source: Refinitiv

USA Treasury Bonds Yield Curve (%)



Source: Refinitiv

Indices (6 months)



Base: 13/11/23=100
Source: Refinitiv, Bloomberg

Capital Market Laboratory Coordinator: MS Javier Penny Pestana
Collaboration: Nadia Contreras, Nikolas Díaz, Joseph Martinez y Marcelo Cossar
email: pulsobursatil@ulima.edu.pe

RANKING STOCKS LIMA

Ticket	Currency	Price	1 D*	5 D*	1 M*	YTD*	Frequency	Volume	Beta	Dividend Yield (%)	Price Earning	Capitalización Bursátil (M US\$)	Sector	Index Weight
ALCORCLIM	S/.	5.85	-0.85%	2.63%	-5.49%	-9.56%	5.00%	1,762	0.62	4.71	9.39	10,278	Industrial	-8.45%
BACKUSILIM	S/.	23.00	5.26%	2.45%	3.14%	-1.27%	90.00%	677	0.40	7.82	0.00	21,362	Industriales	-3.87%
BAP	US\$	116.42	-4.99%	-4.07%	-6.65%	-14.18%	90.00%	233,045	1.03	5.53	6.73	37,782,999	Diversas	-29.15%
BVN	S/.	1.40	0.00%	0.00%	-6.67%	-3.33%	85.00%	17,606	0.72	8.38	0.00	7,318	Bancos y Financieras	6.91%
CASAGRCLIM	S/.	1.40	0.00%	0.00%	-6.67%	-3.33%	85.00%	17,606	0.72	8.38	0.00	7,318	Bancos y Financieras	6.91%
BBVACLIM	S/.	1.40	0.00%	0.00%	-6.67%	-3.33%	85.00%	17,606	0.72	8.38	0.00	7,318	Bancos y Financieras	6.91%
CORAREILIM	S/.	0.88	0.00%	-1.34%	-11.20%	-35.64%	80.00%	6,040	0.99	1.68	0.00	622	Industriales	-37.65%
CPACK	US\$	5.30	2.32%	4.13%	5.16%	2.68%	90.00%	5,191	0.51	10.30	33.62	51,254	Industriales	-19.53%
CEVERDECLIM	US\$	30.45	-0.16%	-0.16%	1.50%	7.08%	85.00%	0	1.05	5.17	10.55	152,738	Mineras	6.88%
ENGEPCLIM	S/.	3.40	0.00%	3.03%	-10.05%	0.12%	90.00%	21,281	0.71	7.29	7.12	3,133	Servicios Públicos	28.63%
ENDISPCCLIM	US\$	30.45	-0.16%	-0.16%	1.50%	7.08%	85.00%	0	1.05	5.17	10.55	152,738	Mineras	6.88%
FERREYCLIM	S/.	2.40	0.00%	0.84%	4.78%	18.56%	90.00%	21,821	0.96	9.41	0.00	1,284,282	Diversas	17.80%
AENZACLIM	S/.	0.60	0.00%	-7.69%	-6.25%	-27.71%	65.00%	263	0.62	0.00	7.13	1,358	Diversas	-21.80%
IFS	US\$	18.16	-2.89%	-3.25%	-17.12%	-22.72%	90.00%	30,419	1.09	6.31	4.67	293,594	Diversas	-35.55%
INRETCCLIM	US\$	31.51	0.03%	1.65%	2.94%	-2.05%	80.00%	3,627	0.73	2.59	13.43	33,376	Diversas	-5.43%
LUSURCLIM	S/.	15.75	0.32%	1.09%	1.48%	9.58%	85.00%	5,470	0.56	7.51	0.00	2,506	Servicios Públicos	13.84%
MINSURILIM	S/.	3.56	-1.93%	-2.47%	0.79%	6.47%	90.00%	44,935	1.07	6.24	17.79	25,590	Mineras	6.77%
SCCO.K	US\$	70.18	-0.69%	-5.46%	-4.48%	16.21%	90.00%	723,437	1.28	5.66	17.63	40,514,456	Mineras	12.64%
SIDERCLIM	S/.	1.10	6.80%	6.80%	1.85%	-31.68%	85.00%	20,939	0.84	52.25	0.00	4,327	Industriales	-29.27%
UNACEMCLIM	S/.	2.78	0.00%	0.00%	0.72%	10.83%	10.00%	1,591	-0.02	4.16	0.00	1,570	Diversas	26.91%
VOICABCLIM	S/.	2.78	0.00%	0.00%	0.72%	10.83%	10.00%	1,591	-0.02	4.16	0.00	1,570	Diversas	26.91%
BROCALCLIM	S/.	1.40	0.00%	0.00%	-6.67%	-3.33%	85.00%	17,606	0.72	8.38	0.00	7,318	Bancos y Financieras	6.91%
CORAREILIM	S/.	1.40	0.00%	0.00%	-6.67%	-3.33%	85.00%	17,606	0.72	8.38	0.00	7,318	Bancos y Financieras	6.91%
ENGIECLIM	S/.	3.70	0.00%	1.37%	4.23%	-45.64%	90.00%	6,495	0.92	3.55	18.50	203	Servicios Públicos	-6.35%
GBVLACLIM	S/.	0.60	0.00%	-7.69%	-6.25%	-27.71%	65.00%	263	0.62	0.00	7.13	1,358	Diversas	-21.80%

Quantity of Shares: 25
Source: Refinitiv

Up
Down
Hold

** PER is used in the stock market and original currency of the instrument
*Legend: Variation 1D: 1 day; 5D: 5 days; 1M: 1 Month; YTD: Var% to date

Latin America Credit Rating

RISK RATINGS

Country	Moody/s	Fitch	S&P
Peru	A	#N/A Reque: #N/A Requesting Data...	#N/A Reque: #N/A Requesting Data...
Mexico	A+	#N/A Reque: #N/A Requesting Data...	#N/A Reque: #N/A Requesting Data...
Venezuela	WR	#N/A Reque: #N/A Requesting Data...	#N/A Reque: #N/A Requesting Data...
Brazil	BB	#N/A Reque: #N/A Requesting Data...	#N/A Reque: #N/A Requesting Data...
Colombia	BB+	#N/A Reque: #N/A Requesting Data...	#N/A Reque: #N/A Requesting Data...
Chile	AA-	#N/A Reque: #N/A Requesting Data...	#N/A Reque: #N/A Requesting Data...
Argentina	CCC	#N/A Reque: #N/A Requesting Data...	#N/A Reque: #N/A Requesting Data...
Panama	WD	#N/A Reque: #N/A Requesting Data...	#N/A Reque: #N/A Requesting Data...

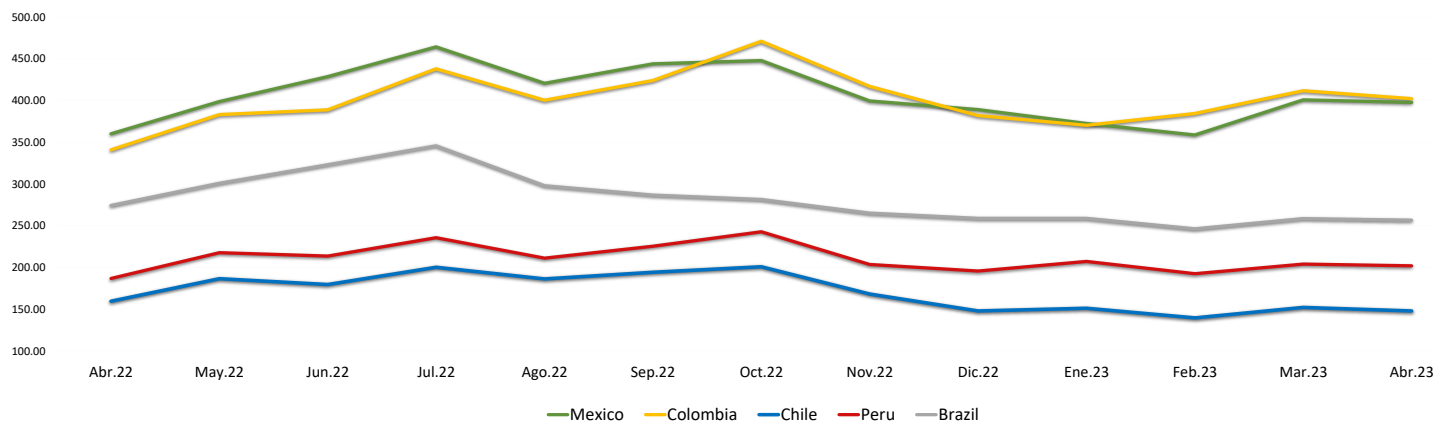
Source: Refinitiv, Bloomberg

Legend

	Moody/s	Fitch	S&P
Prime	Aaa	Aaa	Aaa
High Grade	Aa1	Aa+	Aa+
	Aa2	Aa	Aa
	Aa3	Aa-	Aa-
High Grade Medium	A1	A+	A+
	A2	A	A
	A3	A-	A-
Low Grade Medium	Baa1	BBB+	BBB+
	Baa2	BBB	BBB
	Baa3	BBB-	BBB-
Non-Investment Grade Speculative	Ba1	BB+	BB+
	Ba2	BB	BB
	Ba3	BB-	BB-
Highly Speculative	B1	B+	B+
	B2	B	B
	B3	B-	B-
Substantial Risk	Caa1	CCC+	CCC+
	Caa2	CCC	CCC
	Caa3	CCC-	CCC-
Extremely Speculative	Ca	CC	CC
		C	
Low Expectation of Payment		RD	SD
Default	C	DDD	D
		DD	
Unclassified		D	
	WR		NR

Source: Refinitiv, Bloomberg

LATAM Country Risk (bps)



	Abr.22	May.22	Jun.22	Jul.22	Ago.22	Sep.22	Oct.22	Nov.22	Dic.22	Ene.23	Feb.23	Mar.23	Abr.23
Peru	186.67	217.55	213.55	235.43	211.00	225.27	242.59	203.41	195.50	207.05	192.30	203.83	201.90
Brazil	274.06	300.64	322.82	345.48	297.70	286.56	281.30	264.90	258.64	258.64	246.10	258.35	256.55
Chile	159.44	186.32	179.32	200.10	186.09	194.05	200.69	167.97	147.82	150.95	139.45	152.00	147.75
Colombia	340.78	383.05	388.73	437.86	400.26	423.83	470.84	416.81	381.77	370.18	384.35	411.61	402.15
Mexico	360.00	398.59	428.41	464.10	420.43	443.77	447.72	399.31	389.00	372.32	358.55	400.70	397.60

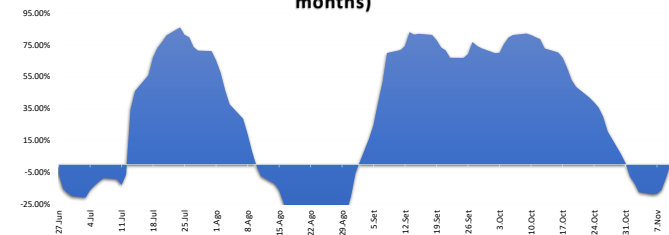
Source: BCRP

Sectorial Indices

	Close	1 D*	5 D*	1 M*	YTD*	Beta
S&P/BVL Consumer Index	1,194.68	0.97%	2.41%	0.87%	-3.15%	0.19
S&P/BVL Industrial Index	235.83	0.23%	0.40%	0.40%	-4.46%	0.15
S&P/BVL Financials Index	866.46	-3.39%	-2.17%	-9.36%	-9.35%	1.59
S&P/BVL Construction Index	207.79	0.39%	0.14%	-3.28%	-14.52%	0.02
S&P/BVL Public Services Index	1,071.34	-0.58%	1.81%	-0.82%	38.39%	0.25
S&P/BVL Mining Index	448.72	-0.26%	-1.97%	-3.32%	13.59%	1.74
S&P/BVL Electric Utilities Index	1,045.89	-0.58%	1.80%	-0.82%	38.39%	0.25

*Legend: Variation 1D: 1 day; 5D: 5 days; 1M: 1 Month; YTD: Var% to date
Source: Refinitiv

Correlation Yield. Mining Index vs. London Metal Index (3 months)



Source: Refinitiv