

## LATINOAMERICA

Lima, 22 de Febrero de 2024

Peru: The LSE General index ended today's session with a positive result of +0.29%. The index maintains a positive accumulated annual trend of +9.64% in local currency and a positive accumulated trend of +7.26% in dollar-adjusted currency. With respect to the S&P/BVL Peru SEL, it varied by +1.68% while the S&P/BVL LIMA 25 by +0.14%. The spot PEN reached S/3.7875. **Headline: Financial services reversed decline, while tourism slows.**

Chile: The IPSA index ended the day with a negative return of -0.22%. The most negatively affected sectors of the day were Non Basic Consumer Products (-1.80%) and Financials (-1.55%). The worst performing stocks were Quinenco SA (-2.52%) and Banco de Chile (-2.12%). **Headline: The economic figures left by two years of the Russian invasion of Ukraine.**

Colombia: The COLCAP index ended the session with a positive return of +0.82%. The most benefited sectors of the day were Materials (+1.50%) and Financials (+1.05%). The best performing stocks were BanColombia SA (+3.22%) and Inversiones Argos SA (+2.31%). **Headline: Queen Maxima of the Netherlands will visit Colombia to talk about financial inclusion.**

Mexico: The IPC index closed the day in positive territory with +0.23%. The sectors that benefited the most during the day were Health Care (+10.08%) and Communication Services (+0.92%). The best performing stocks were Genomma Lab Internacional SAB (+10.08%) and Genera SAB de CV (+9.26%). **Headline: In 5 years, Mexico's economy grew only 0.8% with AMLO... but rose 1.9% with Peña Nieto.**

Brazil: The IBOVESPA index closed the day in positive territory of +0.17%. The day's top gainers were Communication Services (+4.42%) and Information Technology (+2.38%). The best performing stocks were Magazine Luiza SA (+7.65%) and Braskem SA (+6.35%). **Headline: "The Central Bank is melting down", says Central Bank**

### Renta Variable

Más Subieron	Bolsa	Mon.	Precio	▲ %
INDUSTRIAS PENOL	MEX	MXN	221.86	4.91%
FALABELLA SA	SGO	CLP	2,140.00	4.39%
CENCOSUD SA	SGO	CLP	1,625.00	4.03%
GRUPO FIN INB-O	MEX	MXN	48.65	3.64%
GRUPO CARSO-A1	MEX	MXN	163.79	3.49%

Fuente: Refinitiv

Más Bajaron	Bolsa	Mon.	Precio	▼ %
AMERICA MC NYQ	NYQ	USD	18	-2.82%
FOMENTO ECON-UBD	MEX	MXN	229	-2.70%
CONCHATOR SGO	SGO	CLP	990	-2.56%
CEMENTOS ARGOS	COL	COP	6,420	-2.43%
KIMBERLY-CL MEX	MEX	MXN	37	-2.37%

Fuente: Refinitiv

Por Monto Negociado	Bolsa	Monto (US\$)
WALMART DE MEXIC	MEX	112,535.10
CEMEX SAB-CPO	MEX	49,196.71
GRUPO F BANORT-O	MEX	44,546.66
AMERICA MOVIL-L	NYQ	32,953.42
FOMENTO ECON-UBD	MEX	30,715.85

Fuente: Refinitiv

Por Volumen	Bolsa	Volumen
ENEL CHILE SA	SGO	126,767,659.00
BANCO DE CHILE	SGO	102,939,634.00
CEMEX SAB-CPO	MEX	63,512,580.00
BANCO SANTANDER	SGO	63,492,784.00
ENEL AMERICAS SA	SGO	30,077,836.00

Fuente: Refinitiv

### ETFs

	Mon.	Cierre	1 D	5 D	1 M	YTD	Bolsa
ISHARES MSCI ALL PERU CAPPED	USD	USD	USD	USD	USD	CAD	USD
ISHARES MSCI CHILE CAPPED	USD	25.21	-1.45%	-0.20%	-3.78%	1.08%	BTQ
GLOBAL X MSCI COLOMBIA	USD	23.06	0.44%	1.50%	-4.43%	9.55%	PCQ
ISHARES MSCI MEXICO CAPPED	USD	172.94	-0.59%	-1.34%	1.72%	48.08%	LSE
ISHARES MSCI EMERGING MARKETS	USD	40.62	1.02%	1.83%	3.99%	11.56%	PCQ
VANGUARD FTSE EMERGING MARKETS	CAD	33.70	0.66%	1.81%	4.11%	7.53%	TOR
ISHARES CORE MSCI EMERGING MARKETS	USD	51.08	0.95%	1.69%	3.69%	13.94%	PCQ
ISHARES JP MORGAN EMERGING MARKETS BONDS	USD	87.66	0.63%	-0.15%	-0.78%	9.21%	NMQ
MORGAN STANLEY EMERGING MARKETS DOMESTIC	USD	4.72	-0.42%	-0.63%	0.64%	14.56%	NYQ
ISHARES MSCI BRAZIL ETF	USD	33.49	-0.59%	2.10%	-1.96%	1.92%	PCQ

Fuente: Refinitiv

### Principales índices

	Cierre	1 D	5 D	1 M	YTD	14970.185
▼ IPSA (Chile)	6,237.63	-0.22%	0.80%	3.46%	20.34%	110,340
▼ IGPA (Chile)	31,562.17	-0.13%	0.92%	3.12%	12.44%	133,039
▼ COLSC (Colombia)	800.04	-0.63%	1.51%	-5.93%	-15.95%	3,058
▲ COLCAP (Colombia)	1,279.09	0.82%	2.63%	-0.32%	5.00%	67,229
▲ S&P/BVL LIMA (Peru)	28,463.79	0.30%	0.44%	10.21%	39.67%	123,177
▲ S&P/BVL SEL (Peru)	751.24	0.14%	0.91%	10.52%	39.63%	104,994
▲ S&P/BVL LIMA 25	36,412.19	0.26%	1.89%	9.09%	25.42%	121,698
▲ IPC (México)	57,130.84	0.19%	-0.21%	3.05%	23.32%	428,115
▲ IBOVESPA (Brazil)	130,240.55	0.2%	1.9%	-0.3%	10.8%	745,177

\*Leyenda: Variación 1D: 1 Día; 5D: 5 Días; 1M: 1 Mes; YTD: Var. % a la fecha  
Fuente: Refinitiv, Bloomberg

### Monedas

	Precio	1 D*	5 D*	1 M*	YTD*
Sol (PEN)	3.77	-0.38%	-1.53%	2.34%	-4.79%
▼ Peso Chileno (CLP)	978.50	1.10%	1.40%	7.50%	3.80%
▲ Peso Colombiano (COP)	3,930.26	0.32%	0.60%	0.40%	-14.70%
▲ Peso Mexicano (MXN)	17.10	0.38%	0.37%	1.14%	-14.93%
▲ Real Brasileiro (BRL)	4.96	0.50%	-0.26%	1.86%	-5.00%

\*Leyenda: Variación 1D: 1 Día; 5D: 5 Días; 1M: 1 Mes; YTD: Var. % a la fecha  
Fuente: Refinitiv

### Renta Fija

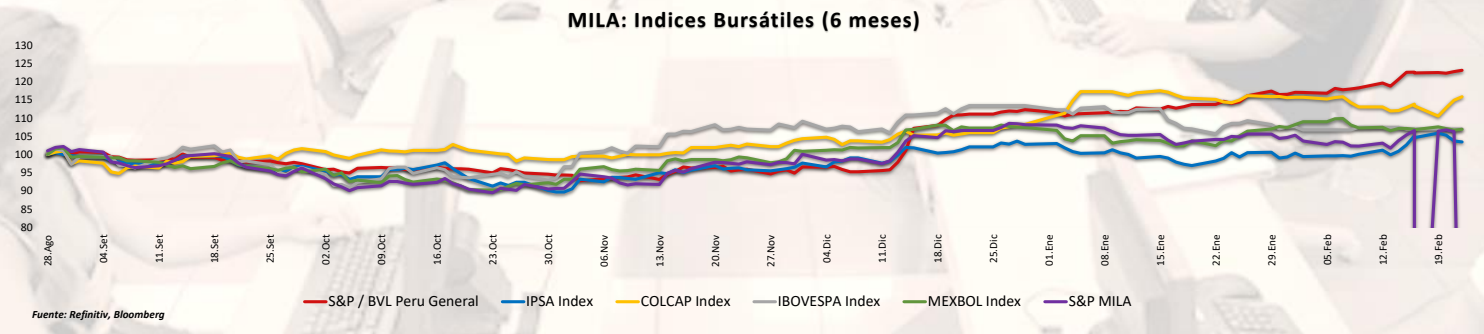
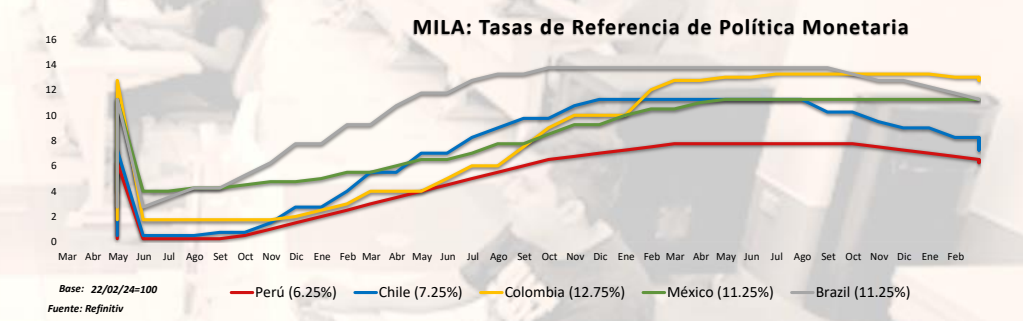
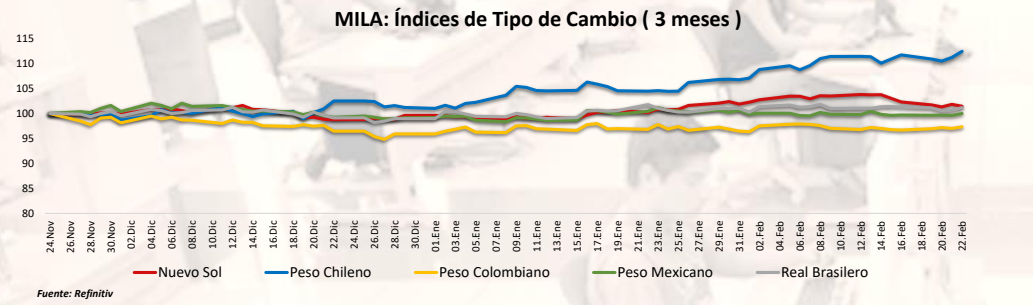
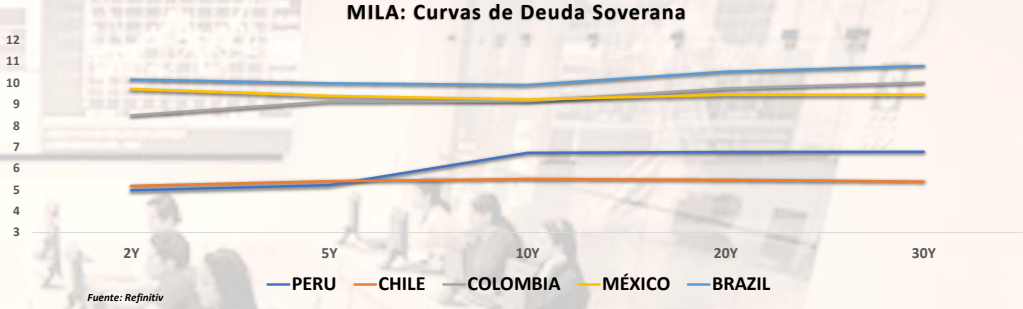
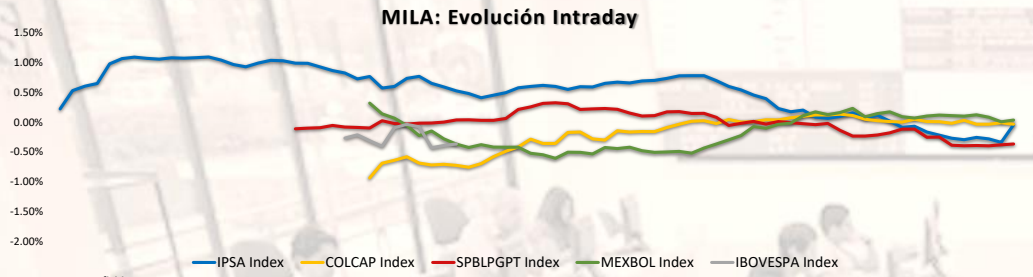
Instrumento	Moneda	Precio	Bid Yield (%)	Ask Yield (%)	Duración
PERU 7.35 07/21/25	USD	USD	USD	USD	USD
PERU 4.125 08/25/27	USD	4.92	97.55	477.4%	3.33
PERU 8.75 11/21/33	USD	5.60	124.14	545.3%	7.06
PERU 6.55 03/14/37	USD	5.56	108.59	551.2%	8.40
PERU 5.625 11/18/2050	USD	5.60	100.47	553.7%	14.07
CHILE 2.45 01/31/31	USD	4.79	86.04	476.1%	6.37
CHILE 3.125 01/21/26	USD	4.60	97.44	442.1%	1.93
CHILE 3.625 10/30/42	USD	5.47	79.19	535.2%	12.92
COLOM 11.85 03/09/28	USD	7.05	117.36	687.9%	3.34
COLOM 10.375 01/28/33	USD	7.45	119.09	702.9%	6.11
COLOM 7.375 09/18/37	USD	7.32	100.27	722.5%	8.65
COLOM 6.125 01/18/41	USD	7.45	87.53	731.5%	10.00
MEX 4 10/02/23	MXV	4.54	88.58	443.7%	7.13
MEX5.55 01/45	USD	6.17	93.02	609.6%	11.98

Fuente: Refinitiv

Coordinador Laboratorio de Mercado de Capitales: MS Javier Penny Pestana

Apoyo: Alfonso Ramirez, Luis Muedas y Leonardo Román

email: pulsobursatil@ulima.edu.pe



Coordinador Laboratorio de Mercado de Capitales: MS Javier Penny Pestana  
Apoyo: Alfonso Ramirez, Luis Muedas and Leonardo Román  
email: pulsobursatil@ulima.edu.pe

## MUNDO

### Estados Unidos:

The US market closed with positive returns. The DOW JONES index closed with results in the green after Nvidia soared 16.4% to \$785.38, pushing its market capitalization above \$1.9 trillion after beating quarterly expectations. This performance reflected growing confidence in AI and demand for its specialized chips. The S&P 500 index also ended with gains, amid a backdrop in which the number of new claims for unemployment benefits unexpectedly fell last week, indicating that job growth is likely to remain solid in February and underpin the urgency for the Federal Reserve to begin cutting interest rates. Finally, the NASDAQ index ended with positive returns. On the corporate front, Nvidia shares posted a historic one-day gain, adding \$250 billion to its market value. Consequently, other chipmakers such as Advanced Micro Devices (10.6%), Qualcomm (1.8%) and Micron (5.4%) also rose strongly. Thus, DOW JONES +1.18%, S&P 500 +2.11% and NASDAQ +2.96% ended the day with positive results.

### Europa:

The major European indices ended the session with positive returns. The pan-European STOXX 600 closed in the green on the back of solid corporate earnings reports and favorable economic data, with the Eurozone's composite PMI showing a smaller-than-expected contraction in February. The UK market, reflected in the FTSE 100, closed with positive results driven by upbeat news from major companies. Beazley, a British insurer, surged by 9% after announcing plans to return \$300 million to shareholders. Rolls-Royce also rose over 8% to a six-year high, forecasting a potential 25% profit increase for the next year. Preliminary S&P PMIs showed strong growth in domestic services firms, with business optimism reaching a two-year peak. Similarly, the German market, reflected in the DAX index, closed with gains, reaching a record high by rising 1.5% to close at 17,370, buoyed by the uptick in tech stocks due to Nvidia's solid revenue forecasts. Mercedes-Benz Group increased its dividend despite reporting a decline in Q4 sales and net profit, projecting lower earnings for the following year. The French market closed the session with positive returns, extending its record high for the third consecutive session. Preliminary PMI figures showed contractions in the private sector in France and the Eurozone in February, but they were less than expected. STMicroelectronics led corporate gains with a 2.95% increase, followed by AXA (+2.84%), which announced a dividend hike and presented a new strategic plan for 2026. Engie rose by 1.54% after raising its financial forecasts for 2024 due to strong gas and energy sales. Thus, FTSE 100 +0.29%; CAC 40 +1.27%; DAX +1.47%; STOXX 600 +0.82% closed positively.

### Asia:

The main Asian indices closed with positive returns. The Chinese market ended the session with gains as mainland stocks rose for the seventh consecutive session thanks to a series of policy support measures that bolstered investor confidence. On the other hand, the Hong Kong market closed with positive returns, advancing for the third consecutive day while holding its highest level in seven weeks thanks to solid gains in all sectors. A prolonged rally in Chinese stocks buoyed sentiment while the new head of the Securities Commission continued efforts to regain market confidence. The South Korean market ended with positive results as the central bank kept borrowing costs unchanged for the ninth consecutive meeting, indicating it needed more time to assess changes in domestic and external conditions. While a downward trend in domestic inflation continued, policymakers were aware of persistently high household debts and a slump in the property market. The Japanese market closed higher on Thursday, surpassing a previous all-time high reached during the 1989 bubble in Japan, with technology stocks leading the charge as Nvidia rallied in after-hours trading on an upbeat earnings report. Enthusiasm over artificial intelligence and related technologies, strong domestic corporate profits, a robust outlook for exporters amid a weakening yen, and the Bank of Japan's refusal to raise interest rates also drove the market rally in Japan. The Australian market ended higher, reversing losses from earlier in the session, with technology stocks leading the charge as Nvidia rallied in after-hours trading on an upbeat earnings report. Thus, the NIKKEI +2.19%; HANG SENG +1.45%; CSI 300 +0.86%; S&P/ASX 200 +0.04%; KOSPI +0.41%; SHANGHAI COMPOSITE +1.27% closed with mostly positive returns.

## ETFs

	Mon.	Cierre	1 D	5 D	1 M	YTD	Bolsa
SPDR S&P 500 ETF TRUST	USD	497.21	0.00%	-0.96%	4.38%	5.20%	PCQ
ISHARES MSCI EMERGING MARKETS ETF	USD	40.21	0.00%	0.80%	2.94%	1.18%	PCQ
ISHARES IBOXX \$ HIGH YIELD CORPORATE BOND ETF	USD	76.93	0.00%	-0.27%	-0.89%	-0.26%	PCQ
FINANCIAL SELECT SECTOR SPDR FUND	USD	39.64	0.00%	-0.33%	5.23%	4.98%	PCQ
VANECK GOLD MINERS ETF	USD	26.82	0.00%	0.19%	-7.17%	-12.24%	PCQ
ISHARES RUSSELL 2000 ETF	USD	197.94	0.00%	-3.18%	2.27%	-0.79%	PCQ
SPDR GOLD SHARES	USD	187.48	0.00%	0.98%	-0.21%	-1.70%	PCQ
ISHARES 20+ YEAR TREASURY BOND ETF	USD	92.18	0.00%	-1.20%	-4.68%	-6.24%	NMQ
INVESCO QQQ TRUST SERIES 1	USD	425.61	0.00%	-2.05%	3.97%	5.72%	NMQ
ISHARES BIOTECHNOLOGY ETF	USD	135.26	0.00%	-0.92%	-1.18%	-2.04%	NMQ
ENERGY SELECT SECTOR SPDR FUND	USD	86.38	0.00%	0.89%	5.65%	1.94%	PCQ
PROSHARES ULTRA VIX ST FUTURES ETF	USD	7.66	0.00%	3.10%	0.13%	-9.13%	BTQ
UNITED STATES OIL ETF	USD	73.20	0.00%	0.49%	8.20%	11.30%	PCQ
ISHARES MSCI BRAZIL ETF	USD	33.69	0.00%	2.71%	-1.38%	-1.98%	PCQ
SPDR S&P OIL & GAS EXP & PRODUCTION ETF	USD	139.92	0.00%	1.43%	5.99%	1.43%	PCQ
UTILITIES SELECT SECTOR SPDR FUND	USD	62.00	0.00%	1.14%	-1.52%	-3.50%	PCQ
ISHARES US REAL ESTATE ETF	USD	87.60	0.00%	-0.50%	-2.22%	-5.01%	PCQ
SPDR S&P BIOTECH ETF	USD	92.47	0.00%	-0.86%	2.21%	2.48%	PCQ
ISHARES IBOXX \$ INVESTMENT GRADE CORP BOND ETF	USD	107.57	0.00%	-0.28%	-2.39%	-2.13%	PCQ
ISHARES JP MORGAN USD EMERGING MARKETS BOND ETF	USD	87.11	0.00%	-0.77%	-1.40%	-1.21%	NMQ
REAL ESTATE SELECT SECT SPDR FUND	USD	38.57	0.00%	-0.46%	-1.71%	-4.60%	PCQ
ISHARES CHINA LARGE-CAP ETF	USD	23.59	0.00%	3.65%	3.33%	1.51%	PCQ
CONSUMER STAPLES SPDR FUND	USD	74.32	0.00%	1.57%	2.41%	2.03%	PCQ
VANECK JUNIOR GOLD MINERS ETF	USD	32.25	0.00%	-0.49%	-8.22%	-13.35%	PCQ
SPDR BLOOMBERG HIGH YIELD BOND ETF	USD	94.21	0.00%	-0.22%	-0.81%	-0.24%	PCQ
VANGUARD REAL ESTATE INDEX FUND ETF	USD	84.69	0.00%	-0.66%	-2.15%	-4.97%	PCQ
DIREXION DAILY GOLD MINERS INDEX BULL 2X SHARES	USD	25.31	0.00%	0.04%	-15.77%	-25.36%	PCQ
PROSHARES ULTRASHORT 20+ YEAR TREASURY	USD	34.93	0.00%	2.40%	9.88%	14.11%	PCQ
ISHARES MSCI EAFE ETF	USD	76.44	0.00%	0.65%	2.25%	2.59%	PCQ
ISHARES PREFERRED AND INCOME SECURITIES ETF	USD	31.75	0.00%	-0.44%	0.76%	1.93%	NMQ
WISDOMTREE JAPAN HEDGED EQUITY ETF	USD	101.50	0.00%	0.87%	8.81%	15.31%	PCQ
GRAYSCALE BITCOIN TRUST (BTC)	USD	45.48	0.00%	-1.52%	11.77%	23.42%	PNK

Fuente: Refinitiv

## Principales índices

	Cierre	1 D	5 D	1 M	YTD	Cap. Burs. (US\$ Mill.)
▲ Dow Jones (EEUU)	39,069.11	1.18%	0.76%	3.60%	30.55%	12,249
▲ Standard & Poor's 500 (EEUU)	5,087.03	2.11%	1.14%	6.42%	35.85%	43,480
▲ NASDAQ Composite (EEUU)	16,041.62	#####	#####	1590617.30%	#####	14,970
▲ Stoxx EUROPE 600 (Europa)	495.10	3.77%	1.34%	4.72%	24.91%	878,227.622
▲ DAX (Alemania)	31.47	2.71%	2.54%	3.21%	48.30%	648
▲ FTSE 100 (Reino Unido)	7,684.49	2.08%	1.14%	1.42%	9.82%	798
▲ CAC 40 (Francia)	7,911.60	6.12%	2.17%	7.09%	33.27%	3,961,440
▲ IBEX 35 (España)	10,138.90	1.65%	2.13%	1.34%	34.99%	1,069,206
▲ MSCI AC Asia Pacific Index	504.92	0.00%	-2.32%	-1.24%	7.47%	22,455
▲ HANG SENG (Hong kong)	16,742.95	5.30%	5.01%	2.70%	-7.05%	19,746
▲ SHANGHAI SE Comp. (China)	2,988.36	5.94%	#¡VALOR!	3.52%	#¡VALOR!	50,808,059
▲ NIKKEI 225 (Japón)	39,098.68	2.19%	2.47%	11.55%	43.16%	692,028
▲ S&P / ASX 200 (Australia)	7,611.20	1.22%	0.07%	1.40%	11.64%	41,076
▲ KOSPI (Corea del Sur)	2,664.27	7.88%	1.93%	4.88%	19.05%	7,710,886

\*Leyenda: Variación 1D: 1 Día; 5D: 5 Días; 1M: 1 Mes; YTD: Var. % a la fecha

Fuente: Refinitiv, Bloomberg

## Renta Variable

### Estados Unidos (Acciones del SPX Index)

Más Subieron	Mon.	Precio	▲ %	Bolsa	Más Bajaron	Mon.	Precio	▼ %	Bolsa
THE TRAVELERS /d	USD	207.64	4.68%	NYQ	SVB FINL GRP O/d	USD	0.11	-31.25%	PNK
ST STREET CP/d	USD	77.545	4.35%	NYQ	LUMEN TCHNLG O/d	USD	1.34	-6.94%	NYQ
PAYPAL HOLDI/d	USD	64.51	3.90%	NSQ	ENPHASE ENRGY/d	USD	102.25	-4.13%	NMQ
TEXAS INSTRUME/d	USD	173.09	3.70%	NSQ	FIRST SOLAR/d	USD	141.49	-4.04%	NSQ
QUALCOMM INC/d	USD	150.17	3.36%	NSQ	ALBEMARLE/d	USD	113.96	-3.42%	NYQ

Fuente: Refinitiv

### Europa (Acciones del STOXX EUROPE 600)

Más Subieron	Mon.	Precio	▲ %	Bolsa	Más Bajaron	Mon.	Precio	▼ %	Bolsa
MISFRESH LTD D/d	USD	0.586	10.36%	NMQ	RED 5/d	AUD	0.145	-9.38%	ASX
GENIUS GROUP O/d	USD	1.0234	10.35%	ASQ	DGTL MD SL A O/d	USD	0.3801	-9.15%	NYQ
C3AI INC A ORD/d	USD	35.32	9.49%	NYQ	NORTHGOLD/d	SEK	6.25	-8.36%	STO
INDIVIOR/d	GBP	1590	7.80%	LSE	MANILA BULLETI/d	PHP	0.29	-7.94%	PHS
DXN SMCND 3X B/d	USD	12.3	4.95%	PCQ	SAFEHOLD INC O/d	USD	25.01	-6.33%	NYQ

Fuente: Refinitiv

## Monedas

	Precio	1 D*	5 D*	1 M*	YTD*
▲ Euro	1.082	0.03%	0.45%	-1.37%	10.54%
▲ Yen	150.52	0.16%	0.41%	3.61%	3.72%
▲ Yuan	7.1944	0.07%	0.02%	0.38%	1.14%
▼ Won Coreano	1327.31	-0.43%	-0.09%	1.02%	-5.75%
▲ Libra Esterlina	1.2659	0.20%	0.47%	-0.79%	13.45%
▲ Dólar de Hong Kong	7.8219	0.01%	0.03%	0.06%	-0.36%
▲ Dólar Australiano	0.6554	0.06%	0.46%	-1.99%	2.37%

\*Leyenda: Variación 1D: 1 Día; 5D: 5 Días; 1M: 1 Mes; YTD: Var. % a la fecha

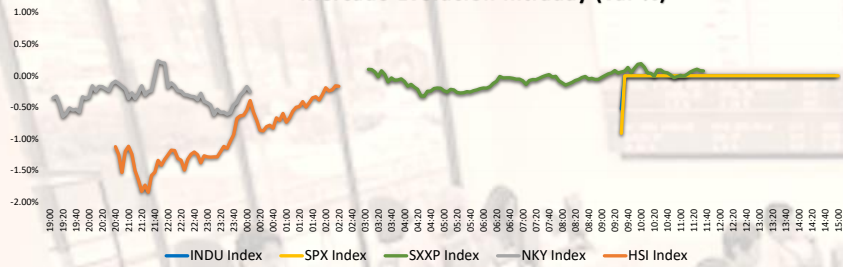
## Materias Primas

	Precio	1 D*	5 D*	1 M*	YTD*
Oro (US\$ Oz. T) (LME)	2024.666	-0.02%	1.03%	-0.17%	18.34%
Plata (US\$ Oz. T) (LME)	22.7553	-0.51%	-0.63%	0.01%	10.20%
Cobre (US\$ TM) (LME)	8456.5	0.00%	2.84%	2.35%	10.55%
Zinc (US\$ TM) (LME)	2352	0.00%	0.87%	-5.21%	-25.17%
Petroleo WTI (US\$ Barril) (NYM)	78.46	0.71%	1.12%	8.72%	4.89%
Estrao (US\$ TM) (LME)	26071	0.00%	-3.80%	7.36%	29.00%
Plomo (US\$ TM) (LME)	2088.06	0.00%	1.63%	1.01%	0.33%
Azúcar #11 (US\$ Libra) (NYB-ICE)	22.83	0.26%	0.04%	4.92%	31.89%
Cacao (US\$ TM) (NYB-ICE)	22.17	-0.49%	-0.31%	4.43%	31.89%
Café Arábica (US\$ TM) (NYB-ICE)	5860	-0.02%	4.55%	38.57%	155.45%

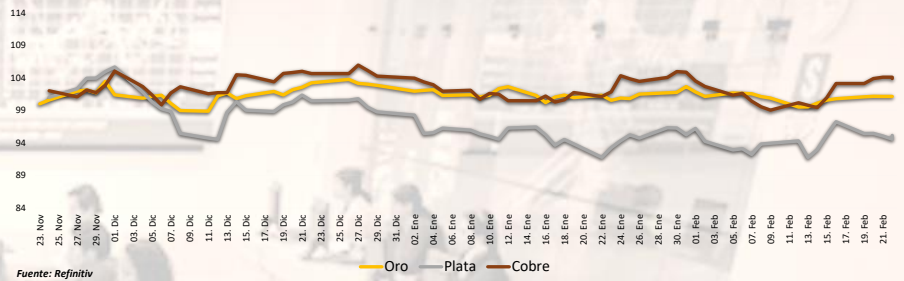
\*Leyenda: Variación 1D: 1 Día; 5D: 5 Días; 1M: 1 Mes; YTD: Var. % a la fecha

Coordinador Laboratorio de Mercado de Capitales: MS Javier Penny Pestana  
Apoyo: Alfonso Ramirez, Luis Muedas y Leonardo Román  
email: pulsobursatil@ulima.edu.pe

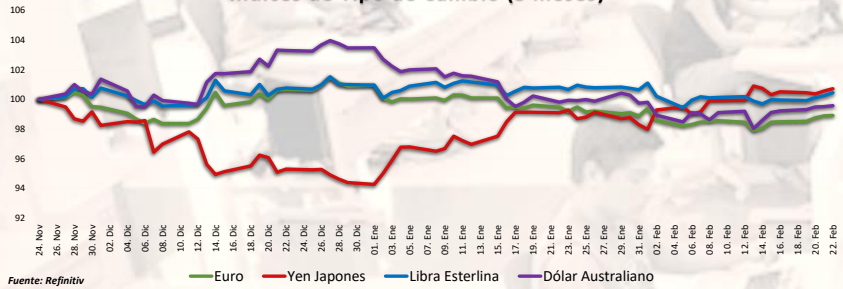
**Mercado Evolución Intraday (var %)**



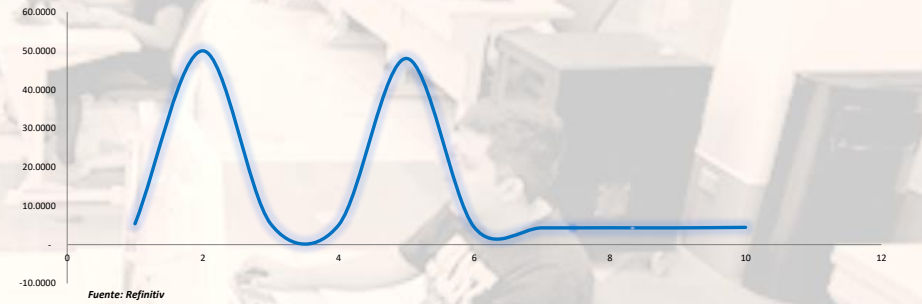
**Índices de Metales principales (3 meses)**



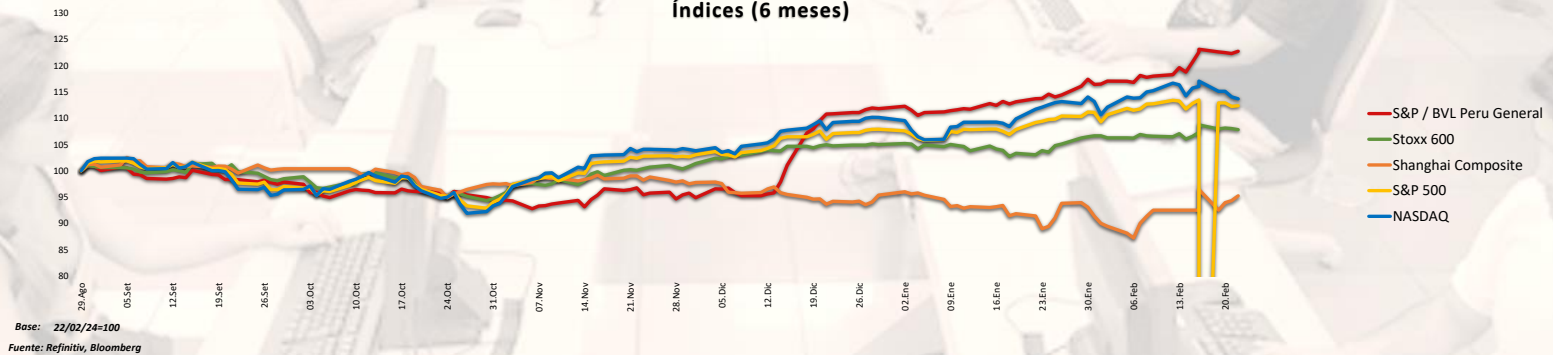
**Índices de Tipo de Cambio (3 meses)**



**Curva de Rendimiento Bonos Tesoro EEUU (%)**



**Índices (6 meses)**



Coordinador Laboratorio de Mercado de Capitales: MS Javier Penny Pestana  
Apoyo: Alfonso Ramirez, Luis Muedas y Leonardo Román  
email: pulsobursatil@ulima.edu.pe

**RANKING ACCIONES LIMA**

	Código	Moneda	Precio	1 D*	5 D*	1 M*	YTD*	Frecuencia	Volumen	Beta	Rentabilidad por Dividendos (%)	Precio-Beneficio	Capitalización Bursátil (M US\$)	Sector	Participación Índice
▲	ALICORCLIM	S/.	6.50	0.00%	-0.76%	4.84%	0.49%	5.00%	36,432	0.60	4.28	10.81	27,413	Industrial	-19.60%
▼	BACKUSILIM	S/.	23.70	-1.25%	1.94%	3.04%	1.73%	90.00%	11,816	0.36	7.19	0.00	16,645	Industriales	-18.71%
▲	BAP	US\$	169.11	0.49%	0.06%	14.09%	24.66%	90.00%	369,005	1.13	4.03	9.13	41,547,473	Diversas	3.95%
▲	BVN	S/.	1.74	-0.57%	1.16%	9.43%	20.15%	85.00%	223,982	0.76	6.71	0.00	24,400	Bancos y Financieras	-5.28%
▼	CASAGRCLIM	S/.	1.74	-0.57%	1.16%	9.43%	20.15%	85.00%	223,982	0.76	6.71	0.00	24,400	Bancos y Financieras	-5.28%
▲	BBVACI PELIM	US\$	169.11	0.49%	0.06%	14.09%	24.66%	90.00%	369,005	1.13	4.03	9.13	41,547,473	Diversas	3.95%
▲	CORAREILIM	S/.	1.10	0.00%	5.77%	14.58%	-19.56%	80.00%	81,314	0.83	1.78	0.00	45,200	Industriales	-29.26%
▲	CPACK	US\$	5.45	0.30%	5.01%	9.88%	5.59%	90.00%	139,877	0.52	9.86	44.37	68,140	Industriales	-17.58%
▲	CYBERDECLIM	US\$	38.70	0.00%	-0.77%	-0.85%	39.21%	85.00%	2,444	1.02	5.54	12.79	968	Mineras	6.94%
▲	ENEFERCLIM	S/.	2.14	0.00%	0.00%	-11.57%	-28.94%	90.00%	28,957	0.63	10.35	5.57	42,448	Servicios Públicos	-46.30%
▲	ENDISCLIM	US\$	38.70	0.00%	-0.77%	-0.85%	39.21%	85.00%	2,444	1.02	5.54	12.79	968	Mineras	6.94%
▲	FEBRECLIM	S/.	3.00	1.01%	3.81%	7.14%	48.20%	90.00%	1,335,157	0.89	8.27	6.62	18,988	Diversas	13.54%
▲	AEHZACLIM	S/.	0.78	2.63%	25.81%	41.82%	-3.92%	65.00%	147,680	0.67	0.00	7.77	23,073	Diversas	-7.65%
▲	IFS	US\$	29.27	0.03%	8.93%	29.92%	24.55%	90.00%	137,122	1.14	4.03	9.00	6,365,343	Diversas	1.72%
▲	INRETCILIM	US\$	36.00	0.00%	1.67%	0.84%	11.91%	80.00%	1,316	0.66	2.30	15.48	228,271	Diversas	-16.29%
▲	LUSURCLIM	S/.	15.67	0.00%	-0.82%	-0.57%	11.54%	85.00%	6,369	0.49	6.75	0.00	4,211	Servicios Públicos	-10.87%
▲	MINSURILIM	S/.	4.20	0.00%	-0.24%	0.24%	25.61%	90.00%	2,687	0.94	5.39	20.01	11,147	Mineras	-7.15%
▼	SCCOX	US\$	83.14	-0.28%	0.20%	0.00%	37.67%	90.00%	581,563	1.29	3.84	23.53	59,264,503	Mineras	-10.04%
▲	SIDERCLIM	S/.	1.37	0.00%	6.20%	7.03%	-8.53%	85.00%	47,578	0.67	14.15	0.00	9,178	Industriales	-31.61%
▲	UNACECLIM	S/.	2.75	0.00%	0.00%	0.00%	11.25%	10.00%	0	-0.02	4.17	0.00	NULL	Diversas	0.40%
▲	VOICABCLIM	S/.	2.75	0.00%	0.00%	0.00%	11.25%	10.00%	0	-0.02	4.17	0.00	NULL	Diversas	0.40%
▼	BROCALCLIM	S/.	1.74	-0.57%	1.16%	9.43%	20.15%	85.00%	223,982	0.76	6.71	0.00	24,400	Bancos y Financieras	-5.28%
▼	CORARECLIM	S/.	1.74	-0.57%	1.16%	9.43%	20.15%	85.00%	223,982	0.76	6.71	0.00	24,400	Bancos y Financieras	-5.28%
▼	ENGIECLIM	S/.	3.94	-0.25%	0.00%	4.23%	-41.40%	90.00%	1,000	0.83	3.28	19.75	1,048	Servicios Públicos	-70.06%
▲	GBVIACLIM	S/.	0.78	2.63%	25.81%	41.82%	-3.92%	65.00%	147,680	0.67	0.00	7.77	23,073	Diversas	-7.65%

Cantidad de Acciones: 25  
Fuente: Refinitiv

Subieron  
Bajaron  
Mantuvieron

\*\* PER se utiliza en el mercado de valores y moneda original del instrumento  
\*Leyenda: Variación 1D: 1 Día; 5D: 5 Días; 1M: 1 Mes; YTD: Var. % a la fecha

**Rating Crédito Latinoamérica**

**CLASIFICACIONES DE RIESGO**

País	Moody's	Fitch	S&P
Perú	A	BBB	BBB
México	A+	BBB-	BBB
Venezuela	WR	WD	NR
Brazil	BBB	BB	BB
Colombia	BB+	BB+	BB+
Chile	AA-	A-	A
Argentina	CCC	WD	CCC-
Panamá	WD	BBB-	BBB

Fuente: Refinitiv, Bloomberg

**Leyenda**

	Moody's	Fitch	S&P
Prima	Aaa	AAA	AAA
Alto Grado	Aa1	AA+	AA+
	Aa2	AA	AA
	Aa3	AA-	AA-
Grado Alto Medio	A1	A+	A+
	A2	A	A
	A3	A-	A-
Grado Bajo Medio	Baa1	BBB+	BBB+
	Baa2	BBB	BBB
	Baa3	BBB-	BBB-
Sin Grado de Inversión Especulativo	Ba1	BB+	BB+
	Ba2	BB	BB
	Ba3	BB-	BB-
Altamente Especulativo	B1	B+	B+
	B2	B	B
	B3	B-	B-
Riesgo Sustancial	Caa1	CCC+	CCC+
	Caa2	CCC	CCC
	Caa3	CCC-	CCC-
Extremadamente Especulativo	Ca	CC	CC
		C	CC
Poca esperanzas de Pago		RD	SD
Impago	C	DDD	D
		DD	D
		D	D
Sin Clasificar	WR		NR

Fuente: Refinitiv, Bloomberg

Fuente: BCPR

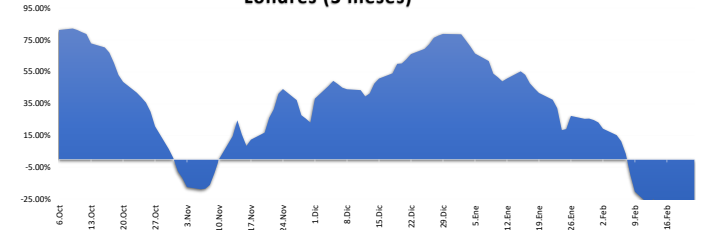
**Índices Sectoriales**

	Cierre	1 D*	5 D*	1 M*	YTD*	Beta
	0.00	#IVALOR!	#IVALOR!	#IVALOR!	#IVALOR!	#IVALOR!
S&P/BVL Industrial Index	285.65	0.00%	#IVALOR!	0.00%	0.00%	0.00
S&P/BVL Financials Index	1,250.19	0.00%	0.00%	0.00%	imeter [SECUF]	0.00
S&P/BVL Construction Index	247.43	0.00%	0.00%	0.00%	imeter [SECUF]	0.00
S&P/BVL Public Services Index	1,048.25	0.00%	0.00%	0.00%	imeter [SECUF]	0.00
S&P/BVL Mining Index	581.75	0.00%	0.00%	0.00%	imeter [SECUF]	0.00
S&P/BVL Electric Utilities Index	1,023.35	0.00%	0.00%	0.00%	imeter [SECUF]	0.00

\*Leyenda: Variación 1D: 1 Día; 5D: 5 Días; 1M: 1 Mes; YTD: Var. % a la fecha  
Fuente: Refinitiv

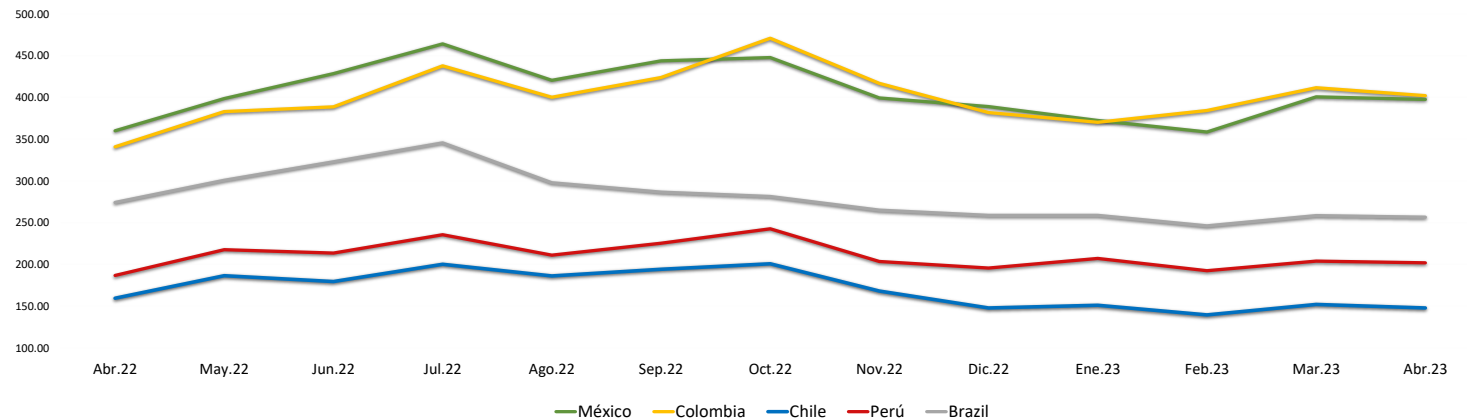
#N/A Mandatory parameter [SECURITY] cannot be empty  
#N/A Mandatory parameter [SECURITY] cannot be empty  
#N/A Mandatory parameter [SECURITY] cannot be empty

**Correlación Rend. Índice Minero vs Índice de Metales de Londres (3 meses)**



Fuente: Refinitiv

**Riesgo País Latinoamérica (pbs)**



	Abr.22	May.22	Jun.22	Jul.22	Ago.22	Sep.22	Oct.22	Nov.22	Dic.22	Ene.23	Feb.23	Mar.23	Abr.23
Perú	186.67	217.55	213.55	235.43	211.00	225.27	242.59	203.41	195.50	207.05	192.30	203.83	201.90
Brazil	274.06	300.64	322.82	345.48	297.70	286.56	281.30	264.90	258.64	258.64	246.10	258.35	256.55
Chile	159.44	186.32	179.32	200.10	186.09	194.05	200.69	167.97	147.82	150.95	139.45	152.00	147.75
Colombia	340.78	383.05	388.73	437.86	400.26	423.83	470.84	416.81	381.77	370.18	384.35	411.61	402.15
México	360.00	398.59	428.41	464.10	420.43	443.77	447.72	399.31	389.00	372.32	358.55	400.70	397.60

Fuente: BCPR