

LATAM

Peru: The LSE General Index is in today's session with a positive result of +0.25%. The index maintains a positive annual cumulative trend of +14.28% in local currency and a positive cumulative trend of +12.72% in dollar-adjusted currency. Regarding the S&P/BVL Peru SEL, it varied by -0.14% while the S&P/BVL LIMA 25 by +0.01%. The PEN spot reached S/.3.7568. Headline: Government made official the amount of the Christmas bonus for public sector workers.

Chile: The IPSA index ended the day with a negative return of -0.26%. The sectors that lost the most during the day were Energy (-0.93%) and Communication services (-0.92%). The worst performing stocks were Inversiones Aguas Metropolitan with -1.93% and Inversiones Aguas Metropolitan -1.62%. Headline: Uphill challenge: Tax revenues must grow more than 10% this semester to reach the Treasury's goal.

Colombia: The COLCAP index ended the session with a positive return of +1.2%. The most benefited sectors of the day were Communication Services (+1.66%) and Consumer Staples (+1.58%). The best performing stocks were Patrimonio Autónomo Estrategia with +1.36%, Inversiones Argos SA +1.02%. Headline: Call to work in Spain with a salary of \$16 million: how to apply.

Mexico: The IPC index closed the day in positive territory with +0.94%. The most benefited sector of the day was Industrials (+2.43%) and Non-Basic Consumer Products (+2.14%). The best performing stocks were Banco del Bajío SA de CV with +3.92%, Coca-Cola Femsa SAB de CV +3.58%. Headline: Fitch ratifies high rating for Delfina Gómez's government in Edomex.

Brazil: The IBOVESPA index closed the day in positive territory -0.03%. The sectors that lost the most during the day were Utilities (-1.05%) and Health Care (-0.55%). The best performing stocks were IRB-Brasil Resseguros SA with -4.49% and Cia. Energética de Minas Gerais with -3.48%. Headline: BNDES may require airlines to purchase Embraer aircraft as part of the government's bailout package.

Equity

Largest Gains	Exchange	Curr.	Price	▲%
KIMBERLY-CLA M-A	MEX	MXN	31.19	2.97%
MEGACABLE-CPO	MEX	MXN	45.57	2.73%
GRUPO CARSO-A1	MEX	MXN	131.14	2.57%
FOMENTO ECON-UBD	MEX	MXN	197.78	2.51%
GRUPO TELEV-CPO	MEX	MXN	9.72	2.42%

Source: Refinitiv

Largest Losses	Exchange	Curr.	Price	▼%
ECOPETROL COL	COL	COP	2,260.00	-1.53%
EMPRESAS COPEC	SGO	CLP	7,170.00	-1.10%
SURAMERICA COL	COL	COP	33,000	-0.60%
GRUPO F BANORT-O	MEX	MXN	147	-0.59%
GRUPO AVAL COL	COL	COP	430	-0.46%

Source: Refinitiv

Per Turnover	Exchange	Amount (US\$)
WALMART DE MEXIC	MEX	86,092.05
GRUPO F BANORT-O	MEX	56,487.65
GRUPO MEXICO-B	MEX	45,425.58
ARCA CONTINENTAL	MEX	31,190.17
AMERICA MOVIL-L	NYQ	24,424.43

Source: Refinitiv

Per Volume	Exchange	Volume
BANCO SANTANDER	SGO	270,829,491.00
BANCO DE CHILE	SGO	72,898,387.00
ENEL CHILE SA	SGO	37,686,194.00
CEMEX SAB-CPO	MEX	33,748,875.00
ENEL AMERICAS SA	SGO	26,932,302.00

Source: Refinitiv

ETFs

	Curr.	Close	1 D	5 D	1 M	YTD	Exchange
ISHARES MSCI ALL PERU CAPPED	USD	USD	USD	USD	USD	CAD	USD
ISHARES MSCI CHILE CAPPED	USD	26.24	-0.72%	-4.34%	-6.29%	-10.47%	BTQ
GLOBAL X MSCI COLOMBIA	USD	24.91	0.26%	-3.69%	-5.20%	27.59%	PCQ
ISHARES MSCI MEXICO CAPPED	USD	154.64	-2.09%	-5.02%	0.95%	0.51%	LSE
ISHARES MSCI EMERGING MARKETS	USD	42.74	-0.97%	-3.98%	1.67%	8.09%	PCQ
VANGUARD FTSE EMERGING MARKETS	CAD	36.26	-0.90%	-2.97%	1.48%	9.02%	TOR
ISHARES CORE MSCI EMERGING MARKETS	USD	53.65	-1.00%	-3.84%	1.32%	9.60%	PCQ
ISHARES JP MORGAN EMERGING MARKETS BONDS	USD	89.26	-0.27%	-1.11%	0.88%	4.67%	NMQ
MORGAN STANLEY EMERGING MARKETS DOMESTIC	USD	4.82	-1.03%	-0.41%	1.69%	5.93%	NYQ
ISHARES MSCI BRAZIL ETF	USD	28.00	-0.28%	-3.95%	-2.64%	2.75%	PCQ

Source: Refinitiv

Lima, July 19, 2024

Main Indexes

	Close	1 D	5 D	1 M	YTD	Market Cap. (US\$ Mill.)
▼ IPSA (Chile)	6,558.68	-0.27%	0.13%	-1.19%	20.58%	117,495
▼ IGPA (Chile)	33,150.86	-0.26%	0.06%	-1.52%	15.98%	140,380
▼ COLSC (Colombia)	869.99	-0.69%	0.11%	-0.96%	1.81%	2,769
▲ COLCAP (Colombia)	1,365.91	0.17%	-0.37%	-3.44%	12.46%	62,493
▲ S&P/BVL LIMA (Peru)	29,667.09	0.25%	-1.55%	-0.53%	33.38%	139,732
▼ S&P/BVL SEL (Perú)	757.77	-0.14%	-2.52%	-2.27%	30.05%	121,748
▲ S&P/BVL LIMA 25	38,111.87	0.01%	-1.31%	-0.19%	25.12%	138,446
▲ IPC (México)	53,678.52	1.20%	-2.32%	1.32%	-0.93%	382,162
▼ IBOVESPA (Brazil)	127,616.46	-0.03%	-1.0%	5.67%	22.9%	635,867

*Legend: Variation 1D: 1 day; 5D: 5 days; 1M: 1 Month; YTD: Var% to date

Source: Refinitiv, Bloomberg

Currency

	Price	1 D*	5 D*	1 M*	YTD*
Sol (PEN)	3.74	-0.85%	0.72%	0.06%	-0.84%
▼ Peso Chileno (CLP)	947.83	1.98%	4.72%	3.15%	18.11%
▲ Peso Colombiano (COP)	4,036.28	0.64%	2.77%	2.55%	-15.64%
▲ Peso Mexicano (MXN)	18.04	0.65%	2.44%	-1.88%	0.51%
▲ Real Brasileiro (BRL)	5.60	3.19%	3.07%	4.68%	7.69%

*Legend: Variation 1D: 1 day; 5D: 5 days; 1M: 1 Month; YTD: Var% to date

Source: Refinitiv

Fixed Income

Instrument	Currency	Price	Bid Yield (%)	Ask Yield (%)	Duration
PERU 7.35 07/21/25	USD	USD	USD	USD	USD
PERU 4.125 08/25/27	USD	4.92	97.55	477.4%	3.33
PERU 8.75 11/21/33	USD	5.60	124.14	545.3%	7.06
PERU 6.55 03/14/37	USD	5.56	108.59	551.2%	8.40
PERU 5.625 11/18/2050	USD	5.60	100.47	553.7%	14.07
CHILE 2.45 01/31/31	USD	4.79	86.04	476.1%	6.37
CHILE 3.125 01/21/26	USD	4.60	97.44	442.1%	1.93
CHILE 3.625 10/30/42	USD	5.47	79.19	535.2%	12.92
COLOM 11.85 03/09/28	USD	7.05	117.36	687.9%	3.34
COLOM 10.375 01/28/33	USD	7.45	119.09	702.9%	6.11
COLOM 7.375 09/18/37	USD	7.32	100.27	722.5%	8.65
COLOM 6.125 01/18/41	USD	7.45	87.53	731.5%	10.00
MEX 4 10/02/23	MXV	4.54	88.58	443.7%	7.13
MEX5.55 01/45	USD	6.17	93.02	609.6%	11.98

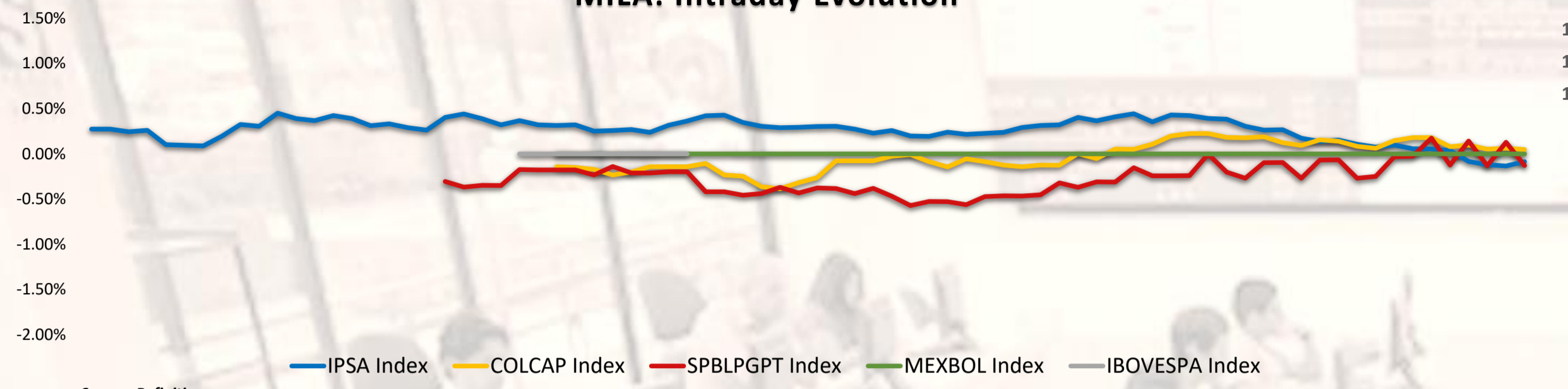
Source: Refinitiv

Capital Market Laboratory Coordinator: MS Javier Penny Pestana
Apoyo: Alfonso Ramirez, Luis Muedas, Leonardo Román y Kiara Gallo
email: pulsobursatil@ulima.edu.pe

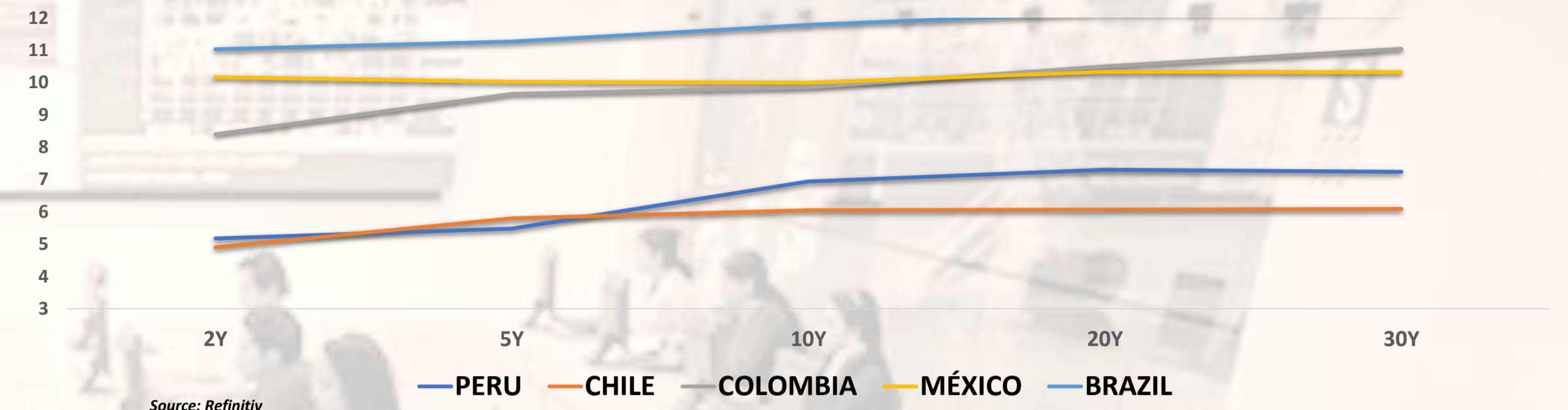
PULSO BURSÁTIL

Facultad de Ciencias Empresariales y Económicas
Carrera de Economía
Laboratorio de Mercado de Capitales

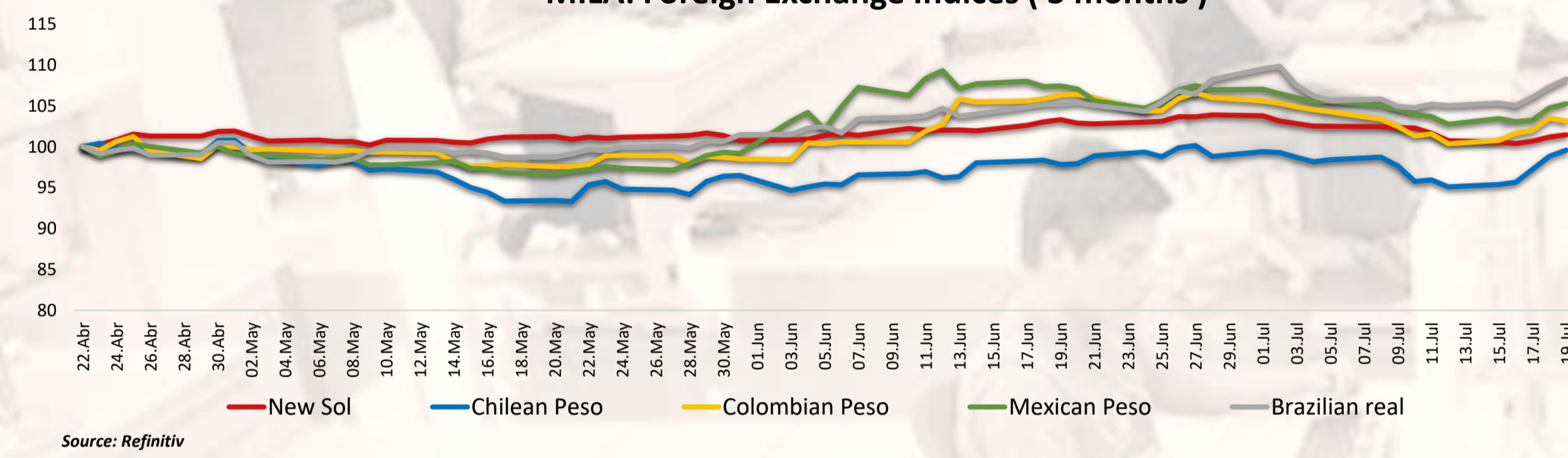
MILA: Intraday Evolution



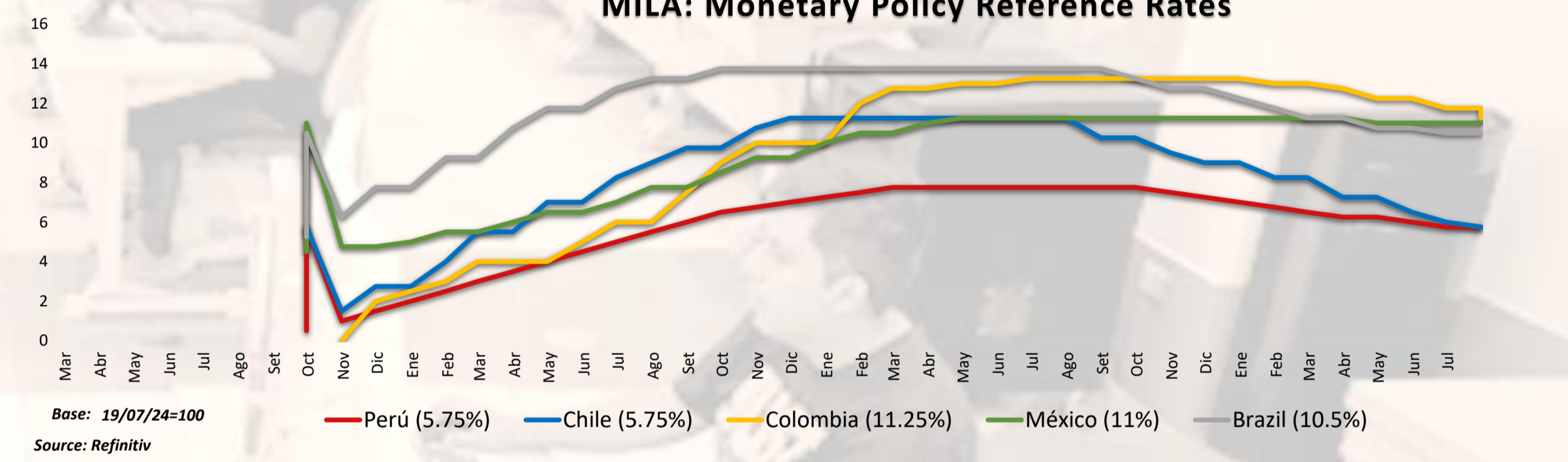
MILA: Curvas de Deuda Soverana



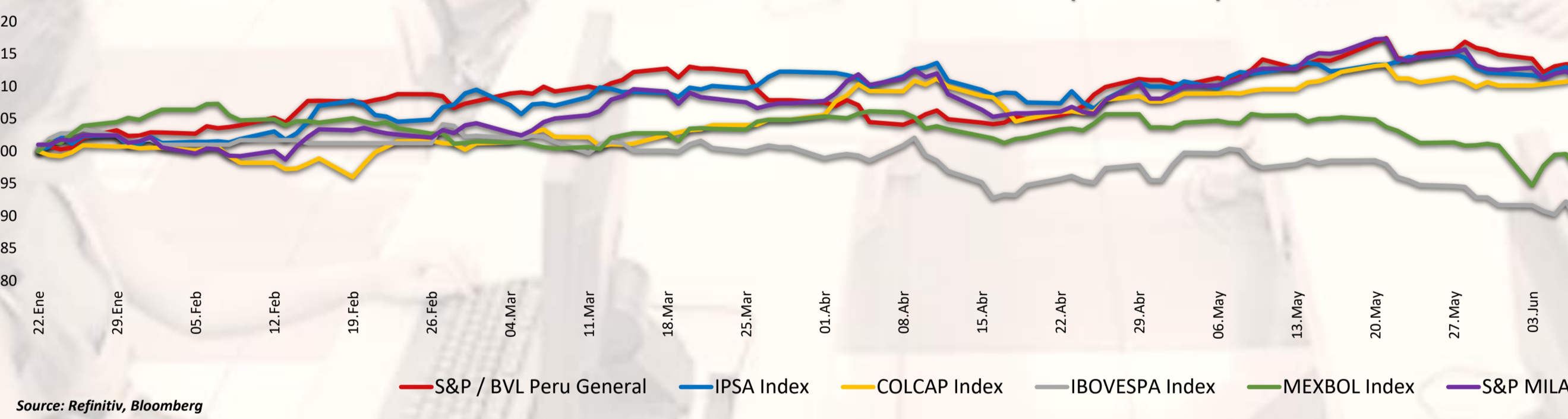
MILA: Foreign Exchange Indices (3 months)



MILA: Monetary Policy Reference Rates



MILA: Stock Indices (6 months)



Capital Market Laboratory Coordinator: MS Javier Penny Pestana
Apoyo: Alfonso Ramirez, Luis Muedas, Leonardo Román y Kiara Gallo
email: pulsobursatil@ulima.edu.pe

The content of this document is just for informational purposes. The information and opinions expressed should not be consider as recommendations for future decisions. Under any circumstances, the Capital Market Laboratory of University of Lima will be responsible for the use of the statements in this document.

WORLD

United States:

The U.S. market closed with negative returns. The DOW JONES ended in the red as investors continued to take profits after recent record highs in major indices. Additionally, a global IT outage increased unease following an already turbulent week, affecting services from airlines to banks. The outage was allegedly due to an update from CrowdStrike (down 11.1%), which caused a problem with Microsoft's Windows (down 0.7%). The S&P 500 also closed in the red, as on the corporate front, Netflix fell 1.5% despite its upbeat results and revenue. American Express dropped 2.7% even after reporting second-quarter earnings that exceeded analysts' estimates. For the week, the S&P 500 declined 2.3%, marking its worst week since April. Finally, the NASDAQ ended the day in the red, breaking a six-week winning streak amid a general rotation to small caps due to expectations that the Federal Reserve will soon cut interest rates and concerns about U.S. trade restrictions on China. Conversely, the Dow rose 0.3%. Thus, DOW JONES -0.93%, S&P 500 -0.71%, and NASDAQ -0.81% all ended with negative results.

Europe:

The main European indices ended the session with negative returns. The pan-European STOXX 600 index closed lower. The European technology sector remained pressured by losses from chip producers, as markets continued to evaluate their revenue forecasts and the risks associated with potential trade barriers. The English market, reflected in the FTSE 100, closed with negative results. Mining stocks were hit hard by falling prices for copper, gold and other metals, influenced by lower demand from China and expectations of an interest rate cut in the United States. Precious metal mines fell 0.8%, and Fresnillo fell 1.4% due to falling gold prices. Industrial metal mines declined 1.7% due to a three-month low in copper prices. The German market closed lower. Germany's main stock index followed its European peers, with traders pulling out of big tech stocks amid expectations of interest rate cuts and concerns about U.S. trade restrictions on China. Additionally, an outage in Microsoft's computer system is causing disruptions to several services, affecting airlines, banks and other industries. Sartorius was the biggest loser, plunging 15% after the company cut its full-year guidance. The French market, reflected in the Cac 40, closed with losses, LVMH lost 6.3%, Hermes fell 5% and Kering 7.1%, in the week. Additionally, major technology stocks suffered due to anticipated interest rate cuts and concerns over US trade restrictions on China, which have negatively affected chipmakers. A Microsoft IT outage also disrupted services in airlines, banks and other industries. Investors are also processing several quarterly earnings reports, with most stocks seeing daily declines. Unibail-Rodamco-Westfield fell 4.4%, STMicroelectronics fell 3% and Teleperformance fell 2.6%. Thus, FTSE 100 -0.60%; CAC 40 -0.69%; DAX -1.00%; STOXX 600 -0.77% ended with negative returns.

Asia:

The main Asian indexes closed with mostly positive performances. The Chinese market closed higher, boosted by new regulatory measures to curb aggressive selling in the stock market. Investors also reacted to data showing that Chinese exports rose by 8.6% year-on-year in June, while imports unexpectedly fell by 2.3%. Elsewhere, in the Hong Kong market, the Hang Seng index ended with gains after China posted its largest trade surplus since July 2022 in June as exports rose and imports fell. The South Korean market ended negative, dragged down by chipmakers, which followed in the bearish wake of their U.S. counterparts after a cooler-than-expected inflation report. Large-cap U.S. technology stocks came under heavy selling pressure as investors favored small-cap stocks. Japanese markets closed lower as the yen rose as much as 2.6% against the dollar on suspicion of government intervention. The Bank of Japan also reportedly conducted a rate check on the euro-yen cross, stoking fears of further monetary intervention. The Australian market ended higher as lower-than-expected June inflation data in the U.S. bolstered bets that the Federal Reserve will begin cutting interest rates in September. Small-cap stocks outperformed in the US, with the Russell 2000 rising 3.6%, although heavy losses in large-cap tech stocks such as Nvidia and Tesla masked those gains. Thus, NIKKEI -2.45%; HANG SENG +2.59%; CSI 300 +0.12%; S&P/ASX 200 +0.88%; KOSPI -1.19%, SHANGHAI COMPOSITE +0.03% finished mostly positive.

ETFs

	Curr.	Close	1 D	5 D	1 M	Exchange
SPDR S&P 500 ETF TRUST	SPY	548.99	-0.66%	-1.96%	2.81%	:PY US Equity
ISHARES MSCI EMERGING MARKETS ETF	EEM	42.74	-0.97%	-3.98%	1.67%	:EM US Equity
ISHARES IBOX \$ HIGH YIELD CORPORATE BOND ETF	HYG	77.98	-0.08%	0.00%	1.42%	:YG US Equity
FINANCIAL SELECT SECTOR SPDR FUND	XLF	42.85	-1.02%	1.11%	3.30%	:LF US Equity
VANECK GOLD MINERS ETF	GDX	37.39	-1.27%	-2.04%	11.48%	:DX US Equity
ISHARES RUSSELL 2000 ETF	IWM	216.84	-0.51%	1.74%	7.77%	:WM US Equity
SPDR GOLD SHARES	GLD	221.73	-1.79%	-0.62%	4.79%	:LD US Equity
ISHARES 20+ YEAR TREASURY BOND ETF	TLT.O	92.92	-0.59%	-1.09%	1.55%	:LT US Equity
INVESCO QQQ TRUST SERIES 1	QQQ.O	475.24	-0.89%	-3.96%	2.65%	:QQ US Equity
ISHARES BIOTECHNOLOGY ETF	IBB.O	144.02	-0.07%	-0.70%	5.34%	:BB US Equity
ENERGY SELECT SECTOR SPDR FUND	XLE	92.37	-1.09%	2.04%	2.64%	:LE US Equity
PROSHARES ULTRA VIX ST FUTURES ETF	UVXY.K	25.41	6.32%	21.12%	4.35%	:VXY US Equity
UNITED STATES OIL ETF	USO	78.00	-2.38%	-2.80%	6.82%	:SO US Equity
ISHARES MSCI BRAZIL ETF	EWZ	28.00	-0.28%	-3.95%	-2.64%	:WZ US Equity
SPDR S&P OIL & GAS EXP & PRODUCTION ETF	XOP	146.48	-0.71%	0.33%	0.54%	:OP US Equity
UTILITIES SELECT SECTOR SPDR FUND	XLU	70.13	0.11%	-1.59%	0.27%	:LU US Equity
ISHARES US REAL ESTATE ETF	IYR	92.91	-0.20%	1.39%	7.50%	:YR US Equity
SPDR S&P BIOTECH ETF	XBI	97.51	-0.03%	-1.47%	6.70%	:BI US Equity
ISHARES IBOX \$ INVESTMENT GRADE CORP BOND ETF	LQD	108.38	-0.37%	-0.72%	1.33%	:QD US Equity
ISHARES JP MORGAN USD EMERGING MARKETS BOND ETF	EMB.O	89.26	-0.27%	-1.11%	0.88%	:MB US Equity
REAL ESTATE SELECT SECT SPDR FUND	XLRE.K	40.51	-0.12%	1.30%	6.69%	:LRE US Equity
ISHARES CHINA LARGE-CAP ETF	FXI	25.82	-0.73%	-5.14%	-2.57%	:XI US Equity
CONSUMER STAPLES SPDR FUND	XLP	78.09	-0.33%	0.83%	0.55%	:LP US Equity
VANECK JUNIOR GOLD MINERS ETF	GDXJ.K	45.90	-1.57%	-3.55%	9.39%	:DXJ US Equity
SPDR BLOOMBERG HIGH YIELD BOND ETF	JNK	95.21	-0.08%	-0.03%	1.36%	:NK US Equity
VANGUARD REAL ESTATE INDEX FUND ETF	VNQ	88.79	-0.18%	1.52%	7.03%	:NQ US Equity
DIREXION DAILY GOLD MINERS INDEX BULL 2X SHARES	NUGT.K	45.40	-2.16%	-3.83%	21.78%	:GT US Equity
PROSHARES ULTRASHORT 20+ YEAR TREASURY	TBT	33.57	1.33%	2.19%	-4.25%	:BT US Equity
ISHARES MSCI EAFE ETF	EFA	79.53	-0.61%	-2.51%	-2.14%	:FA US Equity
ISHARES PREFERRED AND INCOME SECURITIES ETF	PF.F	31.85	-0.06%	-0.38%	0.60%	:FF US Equity
WISDOMTREE JAPAN HEDGED EQUITY ETF	DXJ	113.41	-0.53%	-1.40%	3.31%	:XJ US Equity
GRAYSCALE BITCOIN TRUST (BTC)	GBTC.PK	59.68	5.82%	16.70%	-2.93%	:BTC US Equity

Source: Refinitiv

Main Indexes

	Close	1 D	5 D	1 M	YTD
▼ Dow Jones (EEUU)	40,287.53	-0.93%	0.72%	3.84%	20.65%
▼ Standard & Poor's 500 (EEUU)	5,505.00	-0.71%	-1.97%	2.96%	36.07%
▲ NASDAQ Composite (EEUU)	17,726.94	14.50%	-1.50%	-3.65%	-3.04%
▲ Stoxx EUROPE 600 (Europa)	510.03	6.90%	-2.68%	-2.58%	9.86%
▲ DAX (Alemania)	18,171.93	59207.87%	-3.07%	-2.08%	16.65%
▲ FTSE 100 (Reino Unido)	8,155.72	6.48%	-1.18%	-1.09%	2.62%
▼ CAC 40 (Francia)	7,534.52	-6.15%	-2.46%	-5.84%	2.54%
▲ IBEX 35 (España)	11,087.50	7.59%	-1.45%	-2.78%	17.15%
▲		5.87%	-3.09%	1.07%	8.67%
▲ HANG SENG (Hong kong)	17,417.68	6.51%	-4.79%	-5.17%	-15.31%
▼ SHANGHAI SE Comp. (China)	2,982.31	-2.09%	0.37%	-2.26%	-10.40%
▼ NIKKEI 225 (Japón)	40,063.79	-0.16%	-2.74%	3.57%	43.46%
▲ S&P / ASX 200 (Australia)	7,971.60	1.59%	0.15%	1.42%	9.45%
▲ KOSPI (Corea del Sur)	2,795.46	4.29%	-2.15%	2.67%	14.94%

*Legend: Variation 1D: 1 day; 5D: 5 days; 1M: 1 Month; YTD: Var% to date

Source: Refinitiv, Bloomberg

Equity

United States (Stocks from SPX Index)

Largest Gains	Curr.	Price	▲%	Exchange	Largest Losses	Curr.	Price	▼%	Exchange
NVIDIA CORP/d	USD	884.55	47.74%	NSQ	WALMART INC/d	USD	60.86	-62.62%	NYSE
CNSTLN ENRGY O/d	USD	168.84	42.25%	NSQ	CHARTER COMM O/d	USD	296.18	-21.78%	NSQ
DAVITA INC/d	USD	137.02	31.89%	NYSE	HGH WR NTWRK O/d	USD	0.0554	-21.55%	PNK
SIGNATURE BK O/d	USD	2.035	31.29%	PNK	SVB FINL GRP O/d	USD	0.08	-20.00%	PNK
RALPH LAUREN C/d	USD	182.99	31.14%	NYSE	WRN BRS DS A O/d	USD	8.48	-19.54%	NSQ

Source: Refinitiv

Europe (Stocks from STOXX EUROPE 600)

Largest Gains	Curr.	Price	▲%	Exchange	Largest Losses	Curr.	Price	▼%	Exchange
AEDIFICA NV/d	EUR	52.5	0.96%	BRU	FASTIGHETS BAL/d	SEK	69.92	-2.18%	STO
BELLWAY/d	GBP	2728	0.66%	LSE	HEXATRONIC/d	SEK	26.27	-2.12%	STO
ENCAVIS/d	EUR	16.88	0.45%	GER	AZA GN	AUD	0.17	0.00%	NSX
ORKLA A/d	NOK	76.1	0.42%	OSL	ANTERO MIDSTRE/d	USD	13.41	0.37%	NYSE
EXOR NV/d	EUR	101.95	0.39%	AEX	EXOR NV/d	EUR	101.95	0.39%	AEX

Source: Refinitiv

Currency

	Price	1 D*	5 D*	1 M*	YTD*
▲ Euro	1.0877	0.60%	-0.27%	0.71%	2.30%
▼ Yen	157.49	-2.37%	-0.25%	0.50%	15.92%
▼ Yuan	7.2695	-0.04%	0.27%	0.30%	5.28%
▲ Won Koreano	1388.79	0.42%	1.10%	0.72%	7.18%
▲ Libra Esterlina	1.2919	1.06%	-0.56%	1.56%	7.30%
▼ Dólar de Hong Kong	7.8101	-0.02%	0.04%	-0.02%	-0.49%
▼ Dólar Australiano	0.6682	-0.86%	-1.49%	1.52%	-1.27%

*Legend: Variation 1D: 1 day; 5D: 5 days; 1M: 1 Month; YTD: Var% to date

Commodities

	Price	1 D*	5 D*	1 M*	YTD*
Oro (US\$ Oz. T) (LME)	2400.79	1.78%	-0.43%	4.71%	29.42%
Plata (US\$ Oz. T) (LME)	29.26	-4.97%	-4.91%	0.29%	37.75%
Cobre (US\$ TM) (LME)	9179.32	-0.82%	-5.63%	-4.76%	2.51%
Zinc (US\$ TM) (LME)	2716.68	-1.17%	-5.82%	0.47%	-12.38%
Petroleo WTI (US\$ Barril) (NYM)	78.64	-3.27%	-2.94%	5.13%	7.27%
Estaño (US\$ TM) (LME)	30845	-1.73%	-7.97%	-0.91%	25.28%
Plomo (US\$ TM) (LME)	2081.61	-2.16%	-3.28%	-2.92%	-1.69%
Azúcar #11 (US\$ Libra) (NYB-ICE)	#N/A N/A	#¡VALOR!	#¡VALOR!	#¡VALOR!	#¡VALOR!
Cacao (US\$ TM) (NYB-ICE)	18.66	-1.48%	-2.81%	-1.17%	5.54%
Café Arábica (US\$ TM) (NYB-ICE)	7689	-4.70%	-7.60%	-16.09%	192.91%

*Legend: Variation 1D: 1 day; 5D: 5 days; 1M: 1 Month; YTD: Var% to date

Capital Market Laboratory Coordinator: MS Javier Penny Pestana
Apoyo: Alfonso Ramirez, Luis Muedas, Leonardo Román y Kiara Gallo
email: pulsobursatil@ulima.edu.pe

The content of this document is just for informational purposes. The information and opinions expressed should not be consider as recommendations for future decisions. Under any circumstances, the Capital Market Laboratory of University of Lima will be responsible for the use of the statements in this document.

RANKING STOCKS LIMA

Ticket	Currency	Price	1 D*	5 D*	1 M*	YTD*	Frequency	Volume	Beta	Dividend Yield (%)	Price Earning	Capitalización Bursátil (M US\$)	Sector	Index Weight
ALICORC1.LM	S/.	6.59	0.46%	0.61%	6.29%	1.88%	10.00%	67,290	0.00	4.22	10.00	Retrieving...	Industrial	-26.82%
BACKUS1.LM	S/.	22.05	0.00%	-0.27%	1.15%	1.27%	90.00%	5,553	0.37	7.48	0.00	27,245	Industriales	-22.41%
BAP	US\$	172.20	0.31%	0.67%	7.45%	26.93%	90.00%	169,071	1.15	5.40	8.45	45,132,489	Diversas	-6.82%
BVN	S/.	1.35	0.00%	-0.74%	-1.08%	10.65%	85.00%	838,990	0.75	13.09	0.00	30,992	Bancos y Financieras	-17.34%
CASAGRC1.LM	S/.	1.35	0.00%	-0.74%	-1.08%	10.65%	85.00%	838,990	0.75	13.09	0.00	30,992	Bancos y Financieras	-17.34%
45491	#N/D	#N/D	#N/D	#N/D	#N/D	#N/D	#N/D	#N/D	#N/D	#N/D	#N/D	#N/D	#N/D	#N/D
CORAREI1.LM	S/.	1.10	0.00%	1.85%	5.77%	-18.46%	80.00%	2,893	0.80	1.98	0.00	595	Industriales	-20.49%
CPAC.K	US\$	5.56	-1.77%	0.91%	-0.36%	7.72%	90.00%	3,339	0.57	9.53	41.79	9,558	Industriales	-15.95%
CVERDEC1.LM	US\$	39.20	-0.76%	-3.21%	-1.38%	42.76%	85.00%	3,750	0.99	1.08	12.64	81,125	Mineras	6.91%
ENGEPEC1.LM	S/.	2.31	0.00%	0.43%	7.94%	-19.14%	90.00%	25,468	0.64	4.77	7.69	6,275	Servicios Públicos	-45.23%
ENDISP1.LM	US\$	39.20	-0.76%	-3.21%	-1.38%	42.76%	85.00%	3,750	0.99	1.08	12.64	81,125	Mineras	6.91%
FERREY1.LM	S/.	2.84	0.35%	2.53%	1.07%	49.27%	90.00%	118,566	0.87	9.91	0.00	54,553	Diversas	6.41%
AENZAC1.LM	S/.	0.60	0.00%	0.00%	-4.76%	-26.09%	65.00%	1,078	0.64	0.00	6.13	174	Diversas	12.61%
IFS	US\$	22.83	0.18%	-5.50%	1.65%	-2.85%	90.00%	35,947	1.15	4.40	6.47	392,253	Diversas	-24.22%
INRETC1.LM	US\$	28.10	0.00%	1.26%	-1.40%	-10.19%	80.00%	7,932	0.65	2.96	12.63	294,939	Diversas	-33.61%
LUSUR1.LM	S/.	16.90	0.00%	0.00%	3.68%	23.02%	85.00%	8	0.50	7.63	0.00	1,415	Servicios Públicos	-8.49%
MINSUR1.LM	S/.	4.80	0.00%	0.00%	1.05%	44.85%	90.00%	0	0.92	0.82	22.75	36,150	Mineras	6.12%
SCCO.K	US\$	104.30	0.31%	-9.46%	-5.46%	74.51%	90.00%	904,726	1.20	2.30	23.77	183,199,641	Mineras	11.30%
SIDERC1.LM	S/.	1.49	-2.61%	-0.67%	10.37%	-0.51%	85.00%	31,399	0.61	13.01	0.00	46,750	Industriales	2.94%
UNACEM1.LM	S/.	2.62	0.77%	-2.96%	-3.32%	8.76%	10.00%	4,864	-0.01	5.06	0.00	3,048	Diversas	-20.89%
VOLCABC1.LM	S/.	2.62	0.77%	-2.96%	-3.32%	8.76%	10.00%	4,864	-0.01	5.06	0.00	3,048	Diversas	-20.89%
BROCAL1.LM	S/.	1.35	0.00%	-0.74%	-1.08%	10.65%	85.00%	838,990	0.75	13.09	0.00	30,992	Bancos y Financieras	-17.34%
CORAREC1.LM	S/.	1.35	0.00%	-0.74%	-1.08%	10.65%	85.00%	838,990	0.75	13.09	0.00	30,992	Bancos y Financieras	-17.34%
ENGIEC1.LM	S/.	4.10	0.00%	0.00%	0.00%	-38.89%	90.00%	209,923	0.85	1.95	20.50	1,404	Servicios Públicos	-4.08%
GBVLAC1.LM	S/.	0.60	0.00%	0.00%	-4.76%	-26.09%	65.00%	1,078	0.64	0.00	6.13	174	Diversas	12.61%

Quantity of Shares: 25
Source: Refinitiv

Up
Down
Hold

** PER is used in the stock market and original currency of the instrument
*Legend: Variation 1D: 1 day; 5D: 5 days; 1M: 1 Month; YTD: Var% to date

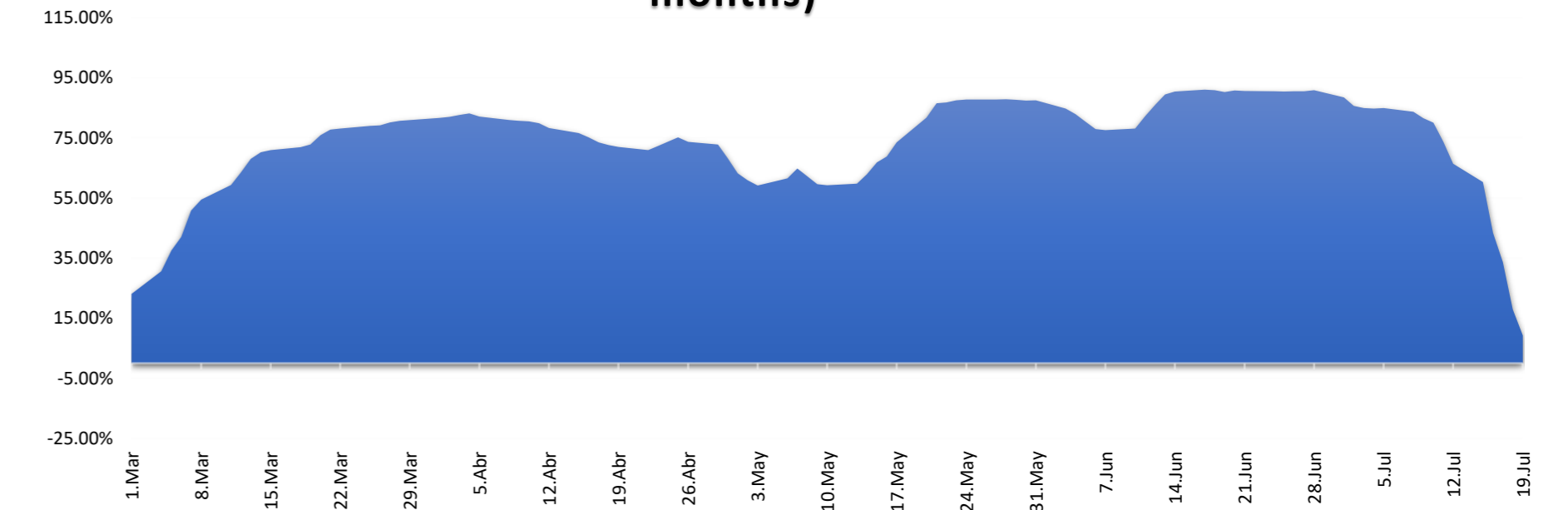
Sectorial Indices

	Close	1 D*	5 D*	1 M*	YTD*	Beta
S&P/BVL Consumer Index	1,187.95	0.01%		-1.26%	-3.69%	0.24
S&P/BVL Industrial Index	282.86	0.13%	#IVALORI	-2.06%	14.59%	0.21
S&P/BVL Financials Index	1,306.00	1.61%	1.84%	7.29%	Requesting D	1.12
S&P/BVL Construction Index	228.12	-0.24%	-0.57%	-0.13%	Requesting D	0.30
S&P/BVL Public Services Index	1,070.89	0.00%	0.01%	0.94%	Requesting D	0.26
S&P/BVL Mining Index	691.37	-0.41%	-6.87%	-5.62%	Requesting D	1.38
S&P/BVL Electric Utilities Index	1,045.46	0.00%	0.01%	0.94%	Requesting D	0.26

*Legend: Variation 1D: 1 day; 5D: 5 days; 1M: 1 Month; YTD: Var% to date
Source: Refinitiv

#N/A Requesting Data...

Correlation Yield. Mining Index vs. London Metal Index (3 months)



Source: Refinitiv

Latin America Credit Rating

RISK RATINGS

Country	Moody/s	Fitch	S&P
Peru	A	BBB	BBB-
Mexico	A+	BBB-	BBB
Venezuela	WR	WD	NR
Brazil	BBB	BB	BB
Colombia	BB+	BB+	BB+
Chile	AA-	A-	A
Argentina	CCC	WD	CCC
Panama	WD	BB+	BBB

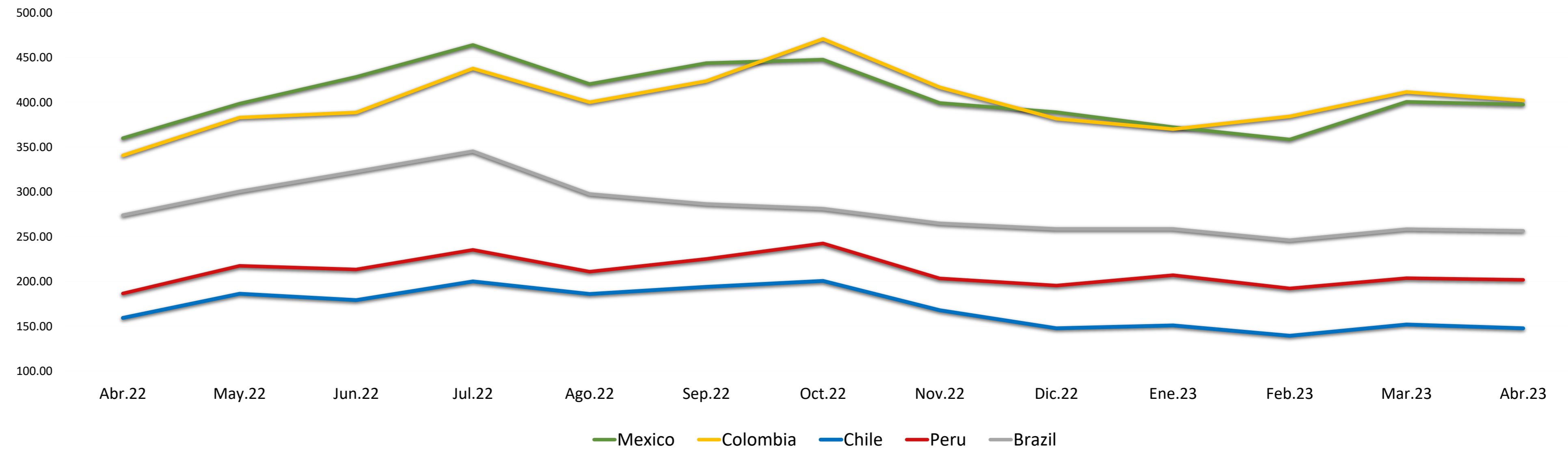
Source: Refinitiv, Bloomberg

Legend

	Moody/s	Fitch	S&P
Prime	Aaa	AAA	AAA
High Grade	Aa1	AA+	AA+
	Aa2	AA	AA
	Aa3	AA-	AA-
High Grade Medium	A1	A+	A+
	A2	A	A
	A3	A-	A-
Low Grade Medium	Baa1	BBB+	BBB+
	Baa2	BBB	BBB
	Baa3	BBB-	BBB-
Non-Investment Grade Speculative	Ba1	BB+	BB+
	Ba2	BB	BB
	Ba3	BB-	BB-
Highly Speculative	B1	B+	B+
	B2	B	B
	B3	B-	B-
Substantial Risk	Caa1	CCC+	CCC+
	Caa2	CCC	CCC
	Caa3	CCC-	CCC-
Extremely Speculative	Ca	CC	CC
		C	C
Low Expectation of Payment		RD	SD
Default		DDD	
		DD	D
		D	
Unclassified	WR		NR

Source: Refinitiv, Bloomberg

LATAM Country Risk (bps)



	Abr.22	May.22	Jun.22	Jul.22	Ago.22	Sep.22	Oct.22	Nov.22	Dic.22	Ene.23	Feb.23	Mar.23	Abr.23
Peru	186.67	217.55	213.55	235.43	211.00	225.27	242.59	203.41	195.50	207.05	192.30	203.83	201.90
Brazil	274.06	300.64	322.82	345.48	297.70	286.56	281.30	264.90	258.64	258.64	246.10	258.35	256.55
Chile	159.44	186.32	179.32	200.10	186.09	194.05	200.69	167.97	147.82	150.95	139.45	152.00	147.75
Colombia	340.78	383.05	388.73	437.86	400.26	423.83	470.84	416.81	381.77	370.18	384.35	411.61	402.15
Mexico	360.00	398.59	428.41	464.10	420.43	443.77	447.72	399.31	389.00	372.32	358.55	400.70	397.60

Source: BCRP