

LATINOAMERICA

Peru: The LSE General index ended today's session with a negative result of -0.06%. The index maintains a positive annual cumulative trend of +10.23% in local currency and a positive cumulative trend of +9.12% in dollar-adjusted currency. Regarding the S&P/BVL Peru SEL, it varied by +0.09% while the S&P/BVL LIMA 25 by -0.13%. The spot PEN reached S/3.7429.

Headline: BVL closed lower as markets await US inflation data.

Chile: The IPSA index ended the day with a positive return +0.08%. The most benefited sectors of the day were Financials (+2.09%) and Consumer Staples (+2.09%). The best performing stocks were Banco de Chile (+2.73%) and Banco de Crédito e Inversiones (+2.18%). Headline: Central Bank survey: inflation expectations for year-end rise 4.5% and rate cut expected for September.

Colombia: The COLCAP index ended the session with a positive return of +1.51%. The sectors that benefited the most during the day were Materials (+2.65%) and Materials (+2.05%). The best performing stocks were Cementos Argos SA (+4.96%) and BanColombia SA (+4.23%). Headline: The penalties to which you are exposed for filing your income tax return late or incorrectly.

Mexico: The IPC index closed the day in negative territory at -0.02%. The sectors that lost the most during the day were Industrials (+0.44%) and Non-Basic Consumer Products (+0.35%). The worst performers were Becle SAB de CV (+3.67%) and Grupo Comercial Chedraui SA (+2.44%). Headline: Prospective vision explains drop in rates: Victoria Rodríguez.

Brazil: The IBOVESPA index closed the day in positive territory of +0.38%. The most benefited sectors of the day were Energy (+2.01%) and Financials (+0.92%). The best performing stocks were Petróleo Brasileiro SA (+2.79%) and Estácio Participações SA (+2.32%). Headline: House approves law creating tax incentives for energy transition with green hydrogen

Renta Variable

Más Subieron	Bolsa	Mon.	Precio	▲ %
SOUTHERN COPPER	LMA	PEN	116.50	6.79%
SONDA SA	SGO	CLP	388.00	5.24%
BOLSA MEXICANA	MEX	MXN	29.89	4.04%
CMPC	SGO	CLP	1,590.00	3.71%
PROMOTORA Y OPER	MEX	MXN	177.71	3.25%

Fuente: Refinitiv

Más Bajaron	Bolsa	Mon.	Precio	▼ %
SOQUIMICH- SGO	SGO	CLP	289.89	-1.73%
COCA-COLA FEMSA	MEX	MXN	163.81	-1.63%
GRUPO F BAI MEX	MEX	MXN	135	-1.43%
AGUAS ANDINAS-A	SGO	CLP	268	-1.34%
FOMENTO EC MEX	MEX	MXN	210	-1.02%

Fuente: Refinitiv

Por Monto Negociado	Bolsa	Monto (US\$)
WALMART DE MEXIC	MEX	57,516.07
GRUPO F BANORT-O	MEX	29,132.82
CEMEX SAB-CPO	MEX	21,755.16
AMERICA MOVIL-L	NYQ	21,279.65
ARCA CONTINENTAL	MEX	8,641.32

Fuente: Refinitiv

Por Volumen	Bolsa	Volumen
ENEL CHILE SA	SGO	170,150,420.00
BANCO SANTANDER	SGO	92,089,203.00
BANCO DE CHILE	SGO	50,611,436.00
CEMEX SAB-CPO	MEX	48,904,867.00
ENEL AMERICAS SA	SGO	25,904,205.00

Fuente: Refinitiv

ETFs

	Mon.	Cierre	1 D	5 D	1 M	YTD	Bolsa
ISHARES MSCI ALL PERU CAPPED	USD	USD	USD	USD	USD	CAD	USD
ISHARES MSCI CHILE CAPPED	USD	25.68	0.31%	5.64%	0.39%	-8.35%	BTQ
GLOBAL X MSCI COLOMBIA	USD	24.27	1.58%	5.61%	-1.31%	32.69%	PCQ
ISHARES MSCI MEXICO CAPPED	USD	147.58	-0.77%	4.93%	-1.09%	0.22%	LSE
ISHARES MSCI EMERGING MARKETS	USD	42.20	0.33%	4.40%	-1.15%	9.72%	PCQ
VANGUARD FTSE EMERGING MARKETS	CAD	36.13	0.53%	0.58%	0.33%	11.44%	TOR
ISHARES CORE MSCI EMERGING MARKETS	USD	52.91	0.30%	4.32%	-1.36%	11.13%	PCQ
ISHARES JP MORGAN EMERGING MARKETS BONDS	USD	90.50	0.11%	0.90%	3.13%	6.43%	NMQ
MORGAN STANLEY EMERGING MARKETS DOMESTIC	USD	4.93	-0.20%	5.34%	7.41%	8.59%	NYQ
ISHARES MSCI BRAZIL ETF	USD	29.43	0.86%	9.53%	8.44%	12.85%	PCQ

Fuente: Refinitiv

Lima, 12 de Agosto de 2024

Principales índices

	Cierre	1 D	5 D	1 M	YTD	Cap. Burs. (US\$ Mill.)
▲ IPSA (Chile)	6,326.05	0.08%	3.72%	-1.26%	20.31%	114148.2414
▲ IGPA (Chile)	31,912.50	0.02%	3.32%	-1.82%	16.42%	
▲ COLSC (Colombia)	864.90	0.11%	1.14%	-0.43%	0.93%	2684.77358
▲ COLCAP (Colombia)	1,333.15	1.74%	3.27%	-3.55%	19.22%	
▼ S&P/BVL LIMA (Peru)	28,615.52	-0.06%	2.24%	-3.72%	32.39%	135458.5907
▲ S&P/BVL SEL (Peru)	751.59	0.09%	2.38%	-2.57%	34.52%	
▼ S&P/BVL LIMA 25	37,533.53	-0.13%	1.55%	-2.70%	26.08%	134229.5004
▼ IPC (México)	53,040.35	-0.02%	2.44%	0.30%	0.36%	
▲ IBOVESPA (Brazil)	131,115.91	0.38%	4.7%	5.13%	31.5%	656371.523

*Leyenda: Variación 1D: 1 Día; 5D: 5 Días; 1M: 1 Mes; YTD: Var. % a la fecha

Fuente: Refinitiv, Bloomberg

Monedas

	Precio	1 D*	5 D*	1 M*	YTD*
Sol (PEN)	3.73	0.00%	0.57%	-2.47%	-0.71%
▲ Peso Chileno (CLP)	933.46	-0.09%	-2.16%	-1.32%	15.89%
▼ Peso Colombiano (COP)	4,050.80	0.02%	-2.45%	-1.99%	-13.31%
▲ Peso Mexicano (MXN)	19.06	0.02%	-1.39%	3.96%	3.98%
▲ Real Brasileiro (BRL)	5.49	-0.08%	-4.03%	-2.96%	5.67%

*Leyenda: Variación 1D: 1 Día; 5D: 5 Días; 1M: 1 Mes; YTD: Var. % a la fecha

Fuente: Refinitiv

Renta Fija

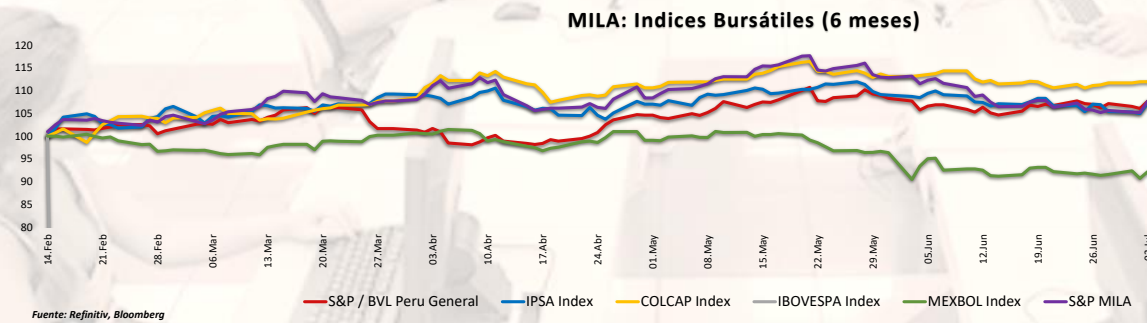
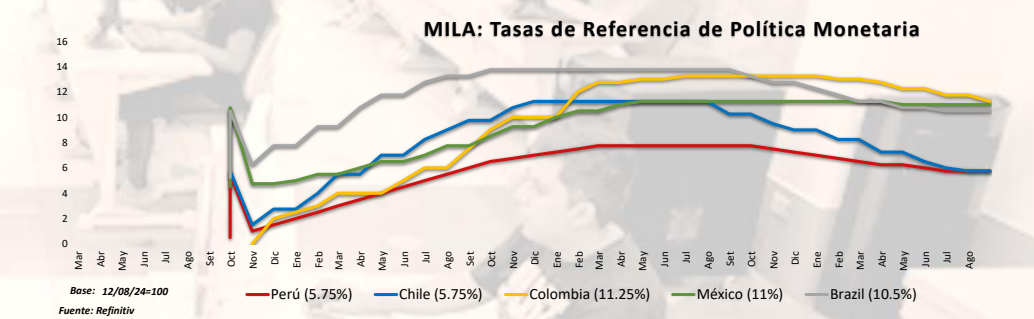
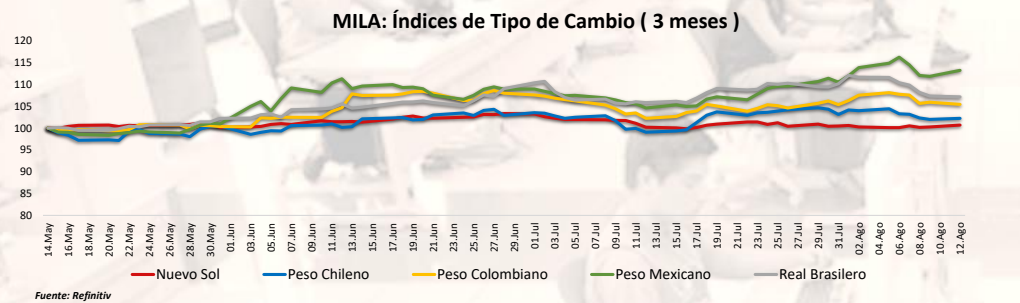
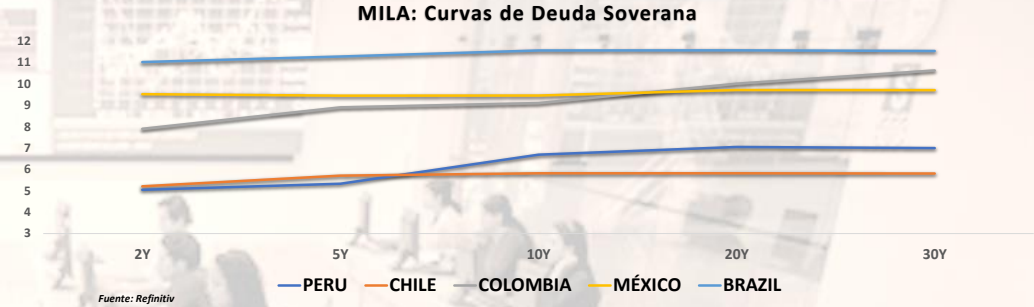
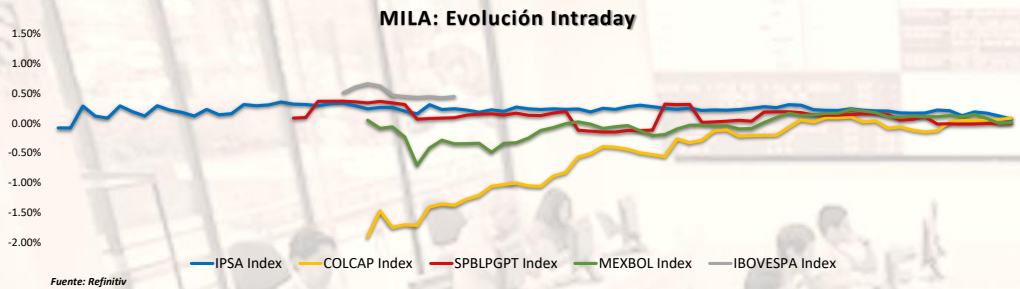
Instrumento	Moneda	Precio	Bid Yield (%)	Ask Yield (%)	Duración
PERU 7.35 07/21/25	USD	USD	USD	USD	USD
PERU 4.125 08/25/27	USD	4.92	97.55	477.4%	3.33
PERU 8.75 11/21/33	USD	5.60	124.14	545.3%	7.06
PERU 6.55 03/14/37	USD	5.56	108.59	551.2%	8.40
PERU 5.625 11/18/2050	USD	5.60	100.47	553.7%	14.07
CHILE 2.45 01/31/31	USD	4.79	86.04	476.1%	6.37
CHILE 3.125 01/21/26	USD	4.60	97.44	442.1%	1.93
CHILE 3.625 10/30/42	USD	5.47	79.19	535.2%	12.92
COLOM 11.85 03/09/28	USD	7.05	117.36	687.9%	3.34
COLOM 10.375 01/28/33	USD	7.45	119.09	702.9%	6.11
COLOM 7.375 09/18/37	USD	7.32	100.27	722.5%	8.65
COLOM 6.125 01/18/41	USD	7.45	87.53	731.5%	10.00
MEX 4 10/02/23	MXV	4.54	88.58	443.7%	7.13
MEX5.55 01/45	USD	6.17	93.02	609.6%	11.98

Fuente: Refinitiv

Coordinador Laboratorio de Mercado de Capitales: MS Javier Penny Pestana

Apoyo: Alfonso Ramirez, Luis Muedas, Leonardo Román y Kiara Gallo

email: pulsobursatil@ulima.edu.pe



Coordinador Laboratorio de Mercado de Capitales: MS Javier Penny Pestana
Apoyo: Alfonso Ramírez, Luis Muedas, Leonardo Román y Kiara Gallo
email: pulsobursatil@ulima.edu.pe

MUNDO

Estados Unidos:

The U.S. market closed with negative returns. The DOW JONES ended with losses as U.S. stocks struggled to maintain momentum on Monday after turbulent sessions last week, with investors preparing for a busy week of significant economic releases. The S&P 500 finished in the green, with this week's focus on key indicators such as the Consumer Price Index, Producer Price Index, retail sales, and industrial production, which are expected to provide insights into the strength of the U.S. economy and ongoing inflation challenges. Lastly, the NASDAQ index ended the day in the green, with the technology, energy, and utilities sectors closing positively. Among stocks, Nvidia rose 4% as the chipmaker sought to overcome concerns about its next-generation processors. Thus, DOW JONES -0.36%, S&P 500 -0.00%, NASDAQ +0.21%, with the market showing mixed returns.

Europa:

Major European indices closed with mixed performances. The pan-European STOXX 600 index closed with losses, as investors continued to assess the extent of growth concerns in Europe and how it may affect the guidance of corporate giants. Munich Re led gains among financial companies in the eurozone benchmark index, up 1%, boosted by a strong earnings report from rival Hannover Re. Also, Prossus and Adyen rose 2% and 1.5%, respectively, leading the technology sector companies, while TotalEnergies and Eni were up about 1% each, amid rising oil prices. In the English market, the FTSE index closed with positive returns, recovering after a volatile week, driven mainly by a 7% increase in BT Group shares. This increase followed news that Bharti Enterprises, an Indian company, plans to acquire a 24.5% stake in BT for approximately £3.2 billion (US\$4 billion), thus buying out BT's largest shareholder. The energy sector gained 1% due to the increase in oil prices, in a context of diminishing recession fears in the US and the current tensions in the Middle East. In the French market, the session closed with losses. After an eventful week, characterized by a significant global sell-off followed by a strong rebound, most stocks in the index posted gains, with STMicroelectronics (+0.9%), Teleperformance (+0.7%) and Vivendi (+0.7%) standing out. In contrast, Essilor shares fell by approximately 0.5%, while Michelin and Sanofi suffered declines of 0.32% and 0.35%, respectively. The German market, as measured by the DAX index, closed in the green, marking its fifth consecutive session without losses, as markets continued to assess the risks of slower growth in Europe ahead of the release of key price data in the U.S. Hannover Re was among the session's biggest gainers, rising 5.3%, after reporting solid second-quarter earnings and confirming its outlook for the year. In contrast, Sartorius fell 2%, prolonging its volatility, and automakers Mercedes, BMW, Volkswagen and Porsche closed in negative territory. Thus, FTSE +0.52%; CAC 40 -0.26%; DAX +0.02%; STOXX 600 -0.02% closed with mixed performances.

Asia:

Major Asian indices closed with mostly positive returns. The Chinese market closed negative as persistent economic concerns in China continued to weigh on investor sentiment. As a result, traders will be evaluating a series of Chinese economic data this week, such as industrial production, retail sales and unemployment figures. On the other hand, the Hang Seng index is in positive territory after posting solid gains in the previous session, thanks mainly to gains in the financial sector. Modest gains in U.S. futures supported the mood, awaiting upcoming U.S. inflation and retail sales reports to determine whether consumer prices are stabilizing and bolster expectations of a widely anticipated September rate cut. The South Korean market ended on a positive note, with chip and battery stocks leading the way. Samsung Electronics, one of the index heavyweights, rose 0.8%, while rival SK Hynix rebounded 3.2%. Among battery manufacturers, LG Energy Solutions (1.9%), Samsung SDI (3.4%) and Hyundai Mobis (2.1%) led the gains. The Japanese market also closed higher as better-than-expected U.S. unemployment data eased fears of an economic slowdown. Benchmark indices also recovered virtually all of Monday's losses, when the market sold off on fears of a U.S. recession and the unwinding of yen carry trades. Meanwhile, investors continued to assess the outlook for monetary policy in Japan, as central bank officials expressed a willingness to continue raising rates, but became more cautious as market volatility increased. The Australian market ended positive amid markets remained cautious after Reserve Bank of Australia Governor Michele Bullock said last week that the central bank will not hesitate to raise rates again to combat inflation. Thus, NIKKEI +0.56%; HANG SENG +0.13%; CSI 300 -0.17%; S&P/ASX 200 +0.46%; KOSPI +1.15%, SHANGHAI COMPOSITE -0.14% ended with mostly positive returns.

ETFs

	Mon.	Cierre	1 D	5 D	1 M	Bolsa
SPDR S&P 500 ETF TRUST	SPY	533.27	0.05%	3.07%	-2.21%	iPY US Equity
ISHARES MSCI EMERGING MARKETS ETF	EEM	42.20	0.33%	4.40%	-1.15%	EM US Equity
ISHARES IBOXX \$ HIGH YIELD CORPORATE BOND ETF	HYG	78.02	0.06%	1.04%	1.69%	iyG US Equity
FINANCIAL SELECT SECTOR SPDR FUND	XLFX	42.18	-0.52%	3.28%	2.38%	(LF US Equity
VANECK GOLD MINERS ETF	GDX	36.90	2.96%	4.41%	8.88%	iDX US Equity
ISHARES RUSSELL 2000 ETF	IWM	204.60	-0.90%	1.19%	1.69%	NM US Equity
SPDR GOLD SHARES	GLD	228.41	1.71%	2.67%	5.96%	iLD US Equity
ISHARES 20+ YEAR TREASURY BOND ETF	TLT.O	96.61	0.36%	-2.22%	7.45%	LT US Equity
INVESCO QQQ TRUST SERIES 1	QQQ.O	451.38	0.22%	3.68%	-6.34%	iQQ US Equity
ISHARES BIOTECHNOLOGY ETF	IBB.O	141.56	-0.43%	1.04%	3.35%	BB US Equity
ENERGY SELECT SECTOR SPDR FUND	XLE	89.85	0.49%	3.93%	-1.48%	(LE US Equity
PROSHARES ULTRA VIX ST FUTURES ETF	UVXY.K	30.00	-0.79%	-51.43%	34.29%	VXY US Equity
UNITED STATES OIL ETF	USO	78.63	3.16%	7.39%	-3.57%	ISO US Equity
ISHARES MSCI BRAZIL ETF	EWZ	29.43	0.86%	9.53%	8.44%	WZ US Equity
SPDR S&P OIL & GAS EXP & PRODUCTION ETF	XOP	138.29	1.36%	5.56%	-5.20%	(OP US Equity
UTILITIES SELECT SECTOR SPDR FUND	XLU	73.74	0.18%	2.05%	8.97%	(LU US Equity
ISHARES US REAL ESTATE ETF	IYR	94.79	-0.68%	2.03%	9.04%	YR US Equity
SPDR S&P BIOTECH ETF	XBI	95.81	0.28%	2.55%	2.98%	(BI US Equity
ISHARES IBOXX \$ INVESTMENT GRADE CORP BOND ETF	LQD	109.94	0.21%	-0.34%	3.61%	QD US Equity
ISHARES JP MORGAN USD EMERGING MARKETS BOND ETF	EMB.O	90.50	0.11%	0.90%	3.13%	MB US Equity
REAL ESTATE SELECT SECT SPDR FUND	XLRE.K	41.56	-0.60%	2.24%	9.25%	LRE US Equity
ISHARES CHINA LARGE-CAP ETF	FXI	25.65	0.79%	2.48%	-1.65%	(XI US Equity
CONSUMER STAPLES SPDR FUND	XLP	78.75	-0.51%	1.35%	3.56%	(LP US Equity
VANECK JUNIOR GOLD MINERS ETF	GDXJ.K	44.15	3.66%	4.94%	5.17%	DXJ US Equity
SPDR BLOOMBERG HIGH YIELD BOND ETF	JNK	95.08	0.03%	0.94%	1.53%	NK US Equity
VANGUARD REAL ESTATE INDEX FUND ETF	VNQ	90.42	-0.74%	1.99%	8.98%	(NQ US Equity
DIREXION DAILY GOLD MINERS INDEX BULL 2X SHARES	NUGT.K	43.56	5.81%	8.55%	16.13%	JGT US Equity
PROSHARES ULTRASHORT 20+ YEAR TREASURY	TBT	30.89	-0.71%	4.43%	-13.42%	BT US Equity
ISHARES MSCI EAFE ETF	EFA	77.31	-0.09%	2.64%	-1.48%	(FA US Equity
ISHARES PREFERRED AND INCOME SECURITIES ETF	PFF.O	31.37	-0.63%	0.61%	0.30%	(FF US Equity
WISDOMTREE JAPAN HEDGED EQUITY ETF	DXJ	98.48	0.98%	7.71%	-12.61%	(XJ US Equity
GRAYSCALE BITCOIN TRUST (BTC)	GBTC.PK	47.10	-2.71%	10.51%	-5.84%	43.33% BTC US Equity

Fuente: Refinitiv

Principales índices

	Cierre	1 D	5 D	1 M	YTD
▼ Dow Jones (EEUU)	39,357.01	-0.36%	1.69%	0.48%	21.35%
▲ Standard & Poor's 500 (EEUU)	5,344.39	0.00%	3.05%	-2.39%	34.36%
▲ NASDAQ Composite (EEUU)	16,780.61	8.39%	0.72%	3.58%	0.03%
▲ Stoxx Europe 600 (Europa)	499.08	4.61%	2.47%	-2.72%	12.22%
▲ DAX (Alemania)	17,726.47	57754.01%	2.23%	-3.08%	17.18%
▲ FTSE 100 (Reino Unido)	8,210.25	7.19%	2.52%	0.53%	9.88%
▼ CAC 40 (Francia)	7,250.67	-9.68%	1.42%	-4.11%	2.44%
▲ IBEX 35 (España)	10,646.20	3.30%	2.14%	-3.72%	19.54%
▲ Hang Seng (Hong Kong)	17,111.65	4.64%	2.48%	-3.43%	-12.55%
▼ SHANGHAI SE Comp. (China)	2,858.20	-6.17%	-0.09%	-4.56%	-12.09%
▲ NIKKEI 225 (Japón)	35,025.00	0.00%	11.34%	-11.62%	27.47%
▲ S&P / ASX 200 (Australia)	7,813.70	-0.42%	2.15%	0.81%	12.23%
▲ KOSPI (Corea del Sur)	2,618.30	-2.31%	7.24%	0.61%	8.68%

*Leyenda: Variación 1D: 1 Día; 5D: 5 Días; 1M: 1 Mes; YTD: Var. % a la fecha

Fuente: Refinitiv, Bloomberg

Renta Variable

Estados Unidos (Acciones del SPX Index)

Más Subieron	Mon.	Precio	▲ %	Bolsa
NVIDIA CORP/d	USD	884.55	47.74%	NSQ
CNSTLN ENRGY O/d	USD	168.84	42.25%	NSQ
DAVITA INC/d	USD	137.02	31.89%	NYQ
SIGNATURE BK O/d	USD	2.035	31.29%	PNK
RALPH LAUREN O/d	USD	182.99	31.14%	NYQ

Fuente: Refinitiv

Más Bajaron	Mon.	Precio	▼ %	Bolsa
WALMART INC/d	USD	60.86	-62.62%	NYQ
CHARTER COMM O/d	USD	296.18	-21.78%	NSQ
HGH WR NTWRK O/d	USD	0.0554	-21.55%	PNK
SVB FINL GRP O/d	USD	0.08	-20.00%	PNK
WRN BRS DS A O/d	USD	8.48	-19.54%	NSQ

Fuente: Refinitiv

Europa (Acciones del STOXX EUROPE 600)

Más Subieron	Mon.	Precio	▲ %	Bolsa
AEDIFICA NV/d	EUR	52.5	0.96%	BRU
BELLWAY/d	Gbp	2728	0.66%	LSE
ENCAVIS/d	EUR	16.88	0.45%	GER
ORKLA A/d	NOK	76.1	0.42%	OSL
EXOR NV/d	EUR	101.95	0.39%	AEX

Fuente: Refinitiv

Más Bajaron	Mon.	Precio	▼ %	Bolsa
FASTIGHETS BAL/d	SEK	69.92	-2.18%	STO
HEXATRONIC/d	SEK	26.27	-2.12%	STO
AZA GN	AUD	0.17	0.00%	NSX
ANTERO MIDSTRE/d	USD	13.41	0.37%	NYQ
EXOR NV/d	EUR	101.95	0.39%	AEX

Fuente: Refinitiv

Monedas

	Precio	1 D*	5 D*	1 M*	YTD*
▲ Euro	1.0932	0.01%	-0.18%	1.81%	1.26%
▼ Yen	147.17	-0.01%	2.08%	-8.84%	11.87%
▲ Yuan	7.1744	0.00%	0.62%	-1.29%	4.23%
▼ Won Coreano	1368.21	-0.05%	0.13%	-1.03%	5.42%
▲ Libra Esterlina	1.2764	0.00%	-0.07%	0.93%	3.91%
▲ Dólar de Hong Kong	7.7922	0.02%	0.05%	-0.25%	-0.73%
▲ Dólar Australiano	0.6585	0.00%	1.39%	-1.11%	-0.96%

*Leyenda: Variación 1D: 1 Día; 5D: 5 Días; 1M: 1 Mes; YTD: Var. % a la fecha

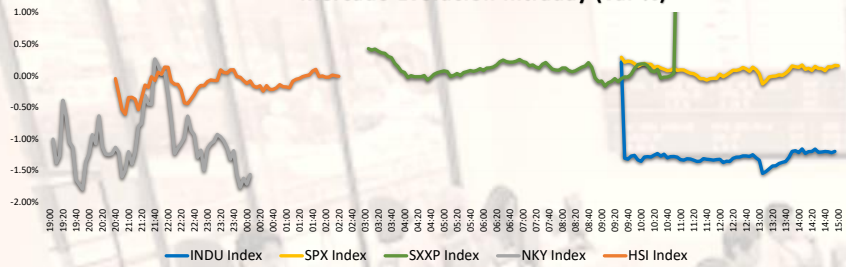
Materias Primas

	Precio	1 D*	5 D*	1 M*	YTD*
Oro (US\$ Oz. T) (LME)	2472.9929	0.03%	2.71%	6.06%	26.39%
Plata (US\$ Oz. T) (LME)	27.9726	-0.13%	2.56%	-4.98%	21.12%
Cobre (US\$ TM) (LME)	8908.18	1.84%	1.63%	-6.06%	-0.48%
Zinc (US\$ TM) (LME)	2694.59	-0.14%	4.57%	-6.09%	-8.47%
Petroleo WTI (US\$ Barril) (NYM)	80.06	4.19%	9.76%	-2.75%	16.52%
Estaño (US\$ TM) (LME)	31648	0.47%	7.81%	-3.07%	23.78%
Plomo (US\$ TM) (LME)	2007.41	0.45%	7.45%	-7.61%	-6.82%
Azúcar #11 (US\$ Libra) (NYB-ICE)	#N/A N/A	# VALOR!	# VALOR!	# VALOR!	# VALOR!
Cacao (US\$ TM) (NYB-ICE)	18.29	-1.03%	1.16%	-9.59%	-2.41%
Café Arábica (US\$ TM) (NYB-ICE)	6952	-5.93%	4.13%	11.39%	163.33%

*Leyenda: Variación 1D: 1 Día; 5D: 5 Días; 1M: 1 Mes; YTD: Var. % a la fecha

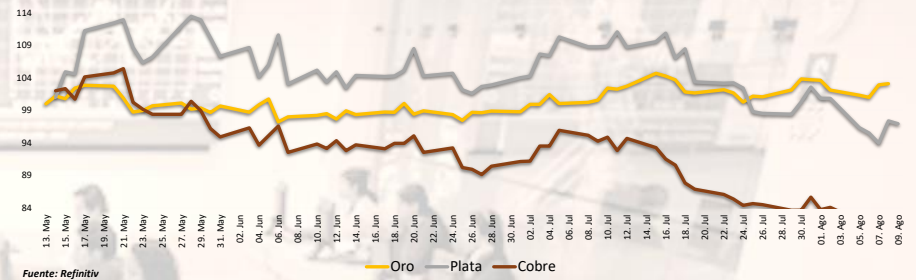
Coordinador Laboratorio de Mercado de Capitales: MS Javier Penny Pestana
Apoyo: Alfonso Ramirez, Luis Muedas, Leonardo Román y Kiara Gallo
email: pulsobursatil@ulima.edu.pe

Mercado Evolución Intraday (var %)



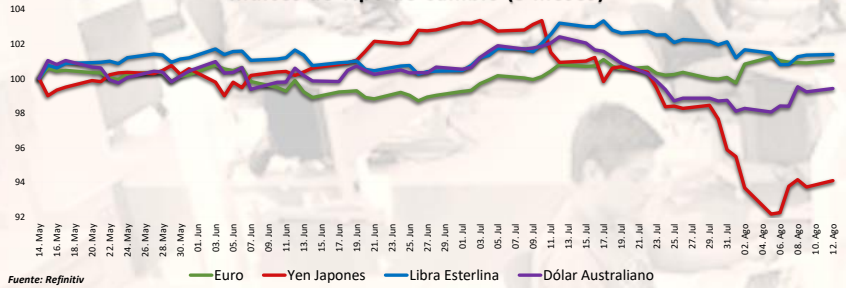
Fuente: Refinitiv, Bloomberg

Índices de Metales principales (3 meses)



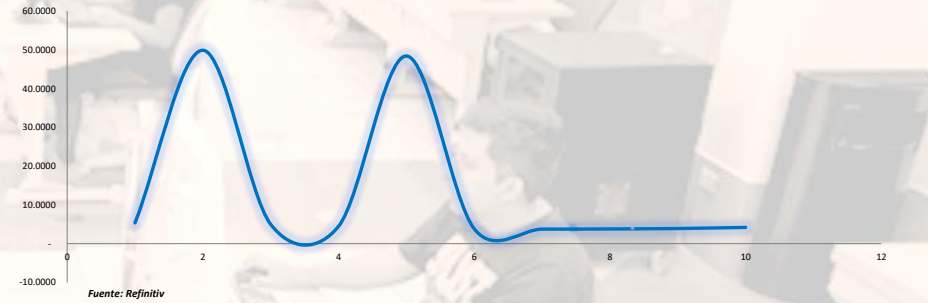
Fuente: Refinitiv

Índices de Tipo de Cambio (3 meses)



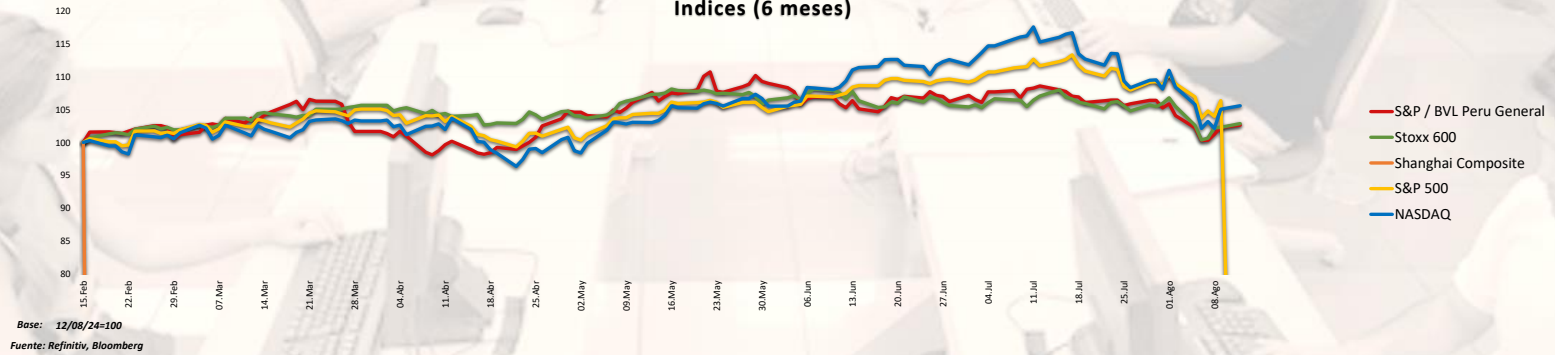
Fuente: Refinitiv

Curva de Rendimiento Bonos Tesoro EEUU (%)



Fuente: Refinitiv

Índices (6 meses)



Base: 12/08/24=100
Fuente: Refinitiv, Bloomberg

Coordinador Laboratorio de Mercado de Capitales: MS Javier Penny Pestana
Apoyo: Alfonso Ramirez, Luis Muedas, Leonardo Román y Kiara Gallo
email: pulsobursatil@ulima.edu.pe

RANKING ACCIONES LIMA

	Código	Moneda	Precio	1 D*	5 D*	1 M*	YTD*	Frecuencia	Volumen	Beta	Rentabilidad por Dividendos (%)	Precio-Beneficio	Capitalización Bursátil (M US\$)	Sector	Participación Índice
▲	ALICONCLM	S/.	6.58	0.00%	1.54%	6.13%	1.73%	15.00%	3,994	0.60	4.22	9.50	395,751	Industrial	-15.84%
▲	BACKUS1LM	S/.	22.00	0.00%	-0.14%	-3.25%	1.04%	90.00%	10,658	0.38	7.55	0.00	5,016	Industriales	-14.91%
▼	BAP	US\$	164.42	-0.74%	2.69%	2.82%	21.20%	90.00%	240,773	1.14	5.61	8.04	36,203,300	Diversas	-12.40%
▼	BVN	S/.	1.31	-0.76%	-1.65%	-2.86%	7.37%	85.00%	99,379	0.75	13.39	0.00	229,389	Bancos y Financieras	-15.96%
▼	CASAGRCLM	S/.	1.31	-0.76%	-1.50%	-2.96%	7.37%	85.00%	99,379	0.75	13.39	0.00	229,389	Bancos y Financieras	-15.96%
▼	BBVACIPELM	US\$	164.42	-0.74%	2.69%	2.82%	21.20%	90.00%	240,773	1.14	5.61	8.04	36,203,300	Diversas	-12.40%
▼	CORAREILM	S/.	1.04	-0.46%	-3.22%	4.52%	-22.52%	80.00%	4,817	0.78	1.98	0.00	71,430	Industriales	-14.97%
▲	CPACK	US\$	5.62	1.26%	-0.35%	-1.92%	8.88%	90.00%	63,761	0.55	9.49	41.86	57,801	Industriales	-14.08%
▲	CYBERECLM	US\$	39.50	1.28%	2.33%	0.25%	43.85%	85.00%	924	0.98	4.55	12.67	498,506	Mineras	7.34%
▲	ENGEFCLM	S/.	2.33	0.43%	3.10%	8.88%	-18.44%	90.00%	20,647	0.63	7.20	7.89	99,840	Servicios Públicos	-43.32%
▲	ENDISCLM	US\$	39.50	1.28%	2.33%	0.25%	43.85%	85.00%	924	0.98	4.55	12.67	498,506	Mineras	7.34%
▲	FEBRECLM	S/.	2.90	0.00%	0.35%	5.84%	52.42%	90.00%	376,150	0.86	10.78	6.14	701,031	Diversas	7.94%
▲	AEZACLIM	S/.	0.55	0.00%	-5.17%	-6.78%	-32.25%	65.00%	8,602	0.63	0.00	5.62	4	Diversas	3.88%
▼	IFS	US\$	22.74	-1.00%	2.66%	1.61%	-3.23%	90.00%	18,615	1.13	4.35	6.17	719,470	Diversas	-23.13%
▼	INRETC1LM	US\$	30.25	-1.79%	3.24%	7.27%	-3.32%	80.00%	3,217	0.64	2.69	13.62	1,029,025	Diversas	-22.69%
▼	LUSURCLM	S/.	15.49	0.00%	-6.18%	-6.12%	12.76%	85.00%	2,719	0.53	8.33	0.00	11,510	Servicios Públicos	-12.74%
▼	MINSURILM	S/.	4.52	-1.53%	0.22%	-4.03%	36.40%	90.00%	54,228	0.91	0.84	0.00	43,963	Mineras	4.81%
▲	SCCOX	US\$	100.32	1.16%	3.50%	-8.24%	68.79%	90.00%	808,341	1.19	2.39	20.96	65,422,627	Mineras	1.00%
▲	SIDERCLM	S/.	1.46	0.00%	3.55%	-0.68%	-2.52%	85.00%	32,182	0.57	13.55	0.00	48	Industriales	9.22%
▲	UNACECLM	S/.	2.65	0.00%	0.00%	-4.68%	10.01%	10.00%	0	-0.02	5.15	0.00	1,187	Diversas	-21.25%
▲	VOICABCLM	S/.	2.65	0.00%	0.00%	-4.68%	10.01%	10.00%	0	-0.02	5.15	0.00	1,187	Diversas	-21.25%
▼	BROCAL1LM	S/.	1.31	-0.76%	-1.50%	-2.96%	7.37%	85.00%	99,379	0.75	13.39	0.00	229,389	Bancos y Financieras	-15.96%
▼	CORARECLM	S/.	1.31	-0.76%	-1.50%	-2.96%	7.37%	85.00%	99,379	0.75	13.39	0.00	229,389	Bancos y Financieras	-15.96%
▼	ENGE1CLM	S/.	4.11	0.00%	0.00%	0.24%	-38.74%	90.00%	162	0.86	1.95	20.55	180	Servicios Públicos	0.55%
▲	GBVIACL1M	S/.	0.55	0.00%	-5.17%	-6.78%	-32.25%	65.00%	8,602	0.63	0.00	5.62	4	Diversas	3.88%

Cantidad de Acciones: 25
Fuente: Refinitiv

Subieron
Bajaron
Mantuvieron

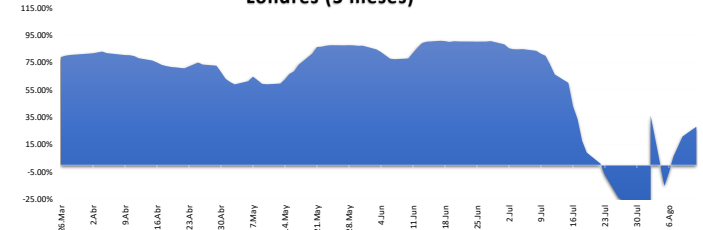
** PER se utiliza en el mercado de valores y moneda original del instrumento
* Leyenda: Variación 1D: 1 Día; 5D: 5 Días; 1M: 1 Mes; YTD: Var. % a la fecha

Índices Sectoriales

	Cierre	1 D*	5 D*	1 M*	YTD*	Beta
S&P/BVL Consumer Index	1,231.12	-0.66%		2.90%	-0.19%	0.24
S&P/BVL Industrial Index	281.19	-0.06%	#IVALOR!	0.80%	13.92%	0.26
S&P/BVL Financials Index	1,245.61	-1.12%	1.93%	0.68%	imeter [SECUF]	1.11
S&P/BVL Construction Index	222.22	0.21%	-1.32%	-1.99%	imeter [SECUF]	0.31
S&P/BVL Public Services Index	1,072.02	0.08%	0.30%	0.42%	imeter [SECUF]	0.14
S&P/BVL Mining Index	661.23	1.14%	1.26%	-12.09%	imeter [SECUF]	1.42
S&P/BVL Electric Utilities Index	1,046.56	0.08%	0.30%	0.42%	imeter [SECUF]	0.14

* Leyenda: Variación 1D: 1 Día; 5D: 5 Días; 1M: 1 Mes; YTD: Var. % a la fecha
#N/A Mandatory parameter [SECURITY] cannot be empty
#N/A Mandatory parameter [SECURITY] cannot be empty
#N/A Mandatory parameter [SECURITY] cannot be empty

Correlación Rend. Índice Minero vs Índice de Metales de Londres (3 meses)



Fuente: Refinitiv

Rating Crédito Latinoamérica

CLASIFICACIONES DE RIESGO

País	Moody's	Fitch	S&P
Perú	A	BBB	BBB-
México	A+	BBB-	BBB
Venezuela	WR	WD	NR
Brazil	BBB	BB	BB
Colombia	BB+	BB+	BB+
Chile	AA-	A-	A
Argentina	CCC	WD	CCC
Panamá	WD	BB+	BBB

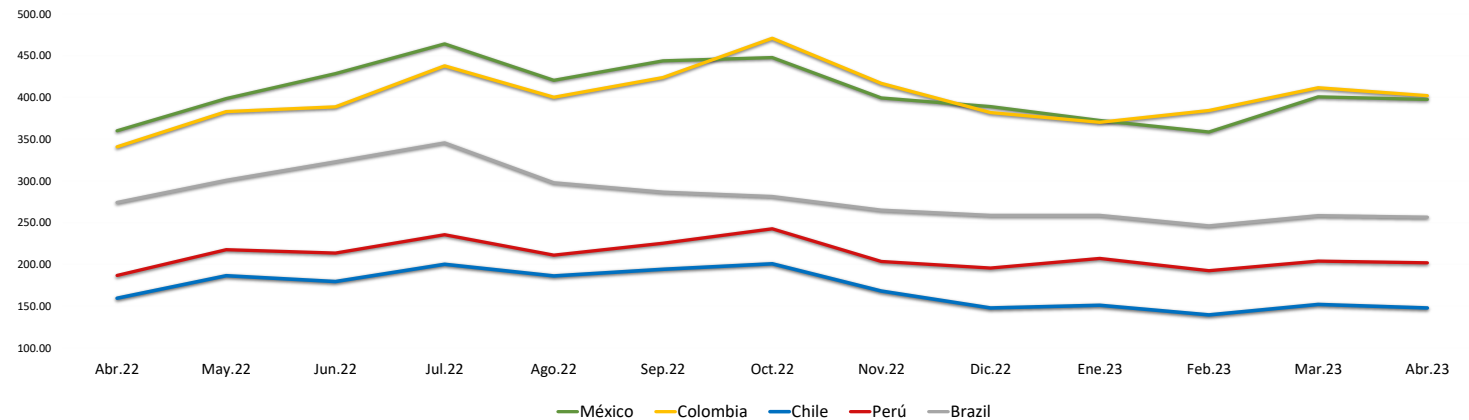
Fuente: Refinitiv, Bloomberg

Leyenda

	Moody's	Fitch	S&P
Prime	Aaa	AAA	AAA
Alto Grado	Aa1	AA+	AA+
	Aa2	AA	AA
	Aa3	AA-	AA-
Grado Alto Medio	A1	A+	A+
	A2	A	A
	A3	A-	A-
Grado Bajo Medio	Baa1	BBB+	BBB+
	Baa2	BBB	BBB
	Baa3	BBB-	BBB-
Sin Grado de Inversión Especulativo	Ba1	BB+	BB+
	Ba2	BB	BB
	Ba3	BB-	BB-
Altamente Especulativo	B1	B+	B+
	B2	B	B
	B3	B-	B-
Riesgo Sustancial	Caa1	CCC+	CCC+
	Caa2	CCC	CCC
	Caa3	CCC-	CCC-
Extremadamente Especulativo	Ca	CC	CC
		C	C
Poca esperanzas de Pago		RD	SD
Impago	C	DDD	D
		D	D
Sin Clasificar	WR		NR

Fuente: Refinitiv, Bloomberg

Riesgo País Latinoamérica (pbs)



	Abr.22	May.22	Jun.22	Jul.22	Ago.22	Sep.22	Oct.22	Nov.22	Dic.22	Ene.23	Feb.23	Mar.23	Abr.23
Perú	186.67	217.55	213.55	235.43	211.00	225.27	242.59	203.41	195.50	207.05	192.30	203.83	201.90
Brazil	274.06	300.64	322.82	345.48	297.70	286.56	281.30	264.90	258.64	258.64	246.10	258.35	256.55
Chile	159.44	186.32	179.32	200.10	186.09	194.05	200.69	167.97	147.82	150.95	139.45	152.00	147.75
Colombia	340.78	383.05	388.73	437.86	400.26	423.83	470.84	416.81	381.77	370.18	384.35	411.61	402.15
México	360.00	398.59	428.41	464.10	420.43	443.77	447.72	399.31	389.00	372.32	358.55	400.70	397.60

Fuente: BCPR