



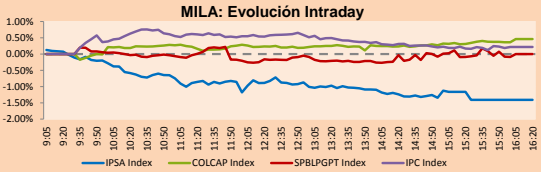
PULSO BURSÁTIL

Lima, december 21, 2017

MILA

Main Indices	Close	1 D	5 D	1 M	YTD	Market Cap. (US\$ bill)
▼ IPISA (Chile)	5,450.83	-1.41%	6.48%	4.84%	31.30%	216.04
▼ IGPA (Chile)	27,454.48	-1.23%	6.90%	4.99%	32.41%	248.53
▲ IGBC (Colombia)	11,216.96	0.49%	1.09%	3.47%	10.99%	100.90
▲ COLCAP (Colombia)	1,488.32	0.46%	0.88%	2.75%	10.11%	102.70
▼ S&P/BVL (Perú)*	19,240.39	-0.09%	3.14%	-2.66%	23.60%	101.59
▲ S&P/BVL SEL (Perú)	353.24	1.18%	3.22%	-0.95%	18.54%	81.26
▲ S&P/BVL LIMA 25	29,203.76	0.84%	2.31%	-5.13%	23.86%	93.97
▲ IPC (México)	48,503.31	0.23%	0.58%	0.66%	6.27%	295.59
▲ S&P MILA 40	715.45	0.20%	6.75%	4.80%	28.75%	303.26

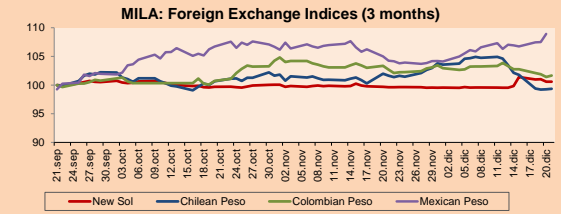
* Market Cap. Of the last price Legend: Variation 1D: 1 day; 5D: 5 days; 1M: 1 Month; YTD: Var%12/31/16 to date



Source: Bloomberg

Currency	Price	1D*	5D*	30 D*	YTD*
▼ New Sol (PEN)	3,2674	-0.02%	0.74%	0.95%	-2.64%
▲ Chilean Peso (CLP)	620.98	0.08%	-2.75%	-2.25%	-7.41%
▲ Colombian Peso (COP)	2,964.62	0.23%	-1.08%	-1.01%	-1.20%
▲ Mexican Peso (MXN)	19.48	1.32%	1.76%	3.74%	-6.04%

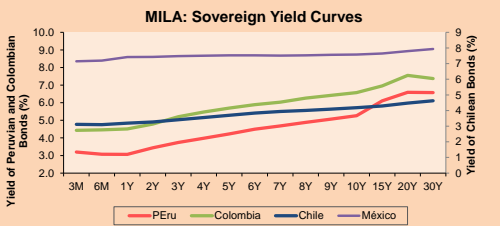
*Legend: Variation 1D: 1 day; 5D: 5 days; 1M: 1 Month; YTD: Var%12/31/16 to date



Base: 21/09/17=100
Source: Bloomberg

Fixed Income

Instrument	Currency	Price	Bid Yield (%)	Ask Yield (%)	Duration
PERU 4.125 08/25/2027	USD	108.663	3.11	3.06	7.99
PERU 7.125 03/30/19	USD	106.667	1.89	1.61	1.21
PERU 7.35 07/21/25	USD	129.52	3.00	2.94	5.97
PERU 8.75 11/21/33	USD	157.208	3.92	3.87	10.15
PERU 6.55 03/14/37	USD	135.115	3.95	3.91	11.69
PERU 5.625 11/19/2050	USD	127.375	4.12	4.08	17.01
CHILE 2.25 10/30/22	USD	98.602	2.61	2.51	4.57
CHILE 3.875 08/05/20	USD	104.302	2.20	2.14	2.46
CHILE 3.625 10/30/2042	USD	100.465	3.62	3.57	16.47
COLOM 11.75 02/25/20	USD	119.675	2.48	2.25	1.92
COLOM 11.85 03/09/28	USD	170.054	3.62	3.56	6.93
COLOM 10.375 01/28/33	USD	159	4.93	4.72	9.01
COLOM 7.375 09/18/37	USD	134.417	4.71	4.66	11.58
COLOM 6.125 01/18/41	USD	120.82	4.66	4.63	13.12
MEX 4 10/02/23	USD	104.705	3.13	3.07	5.14
MEX5.55 01/45	USD	112.693	4.729	4.701	14.55



Source: Bloomberg

Equity	Exchange	Amt.	Price	▲%
Largest gains				
MIRL	Lima	USD	0.09	13.33
CAMANCHACA	Santia.	CLP	50.00	10.86
TRICAHUE	Santia.	CLP	1400.00	7.69
IANSA	Santia.	CLP	19.50	5.41

Largest losses	Exchange	Amt.	Price	▼%
PUERTO	Santia.	CLP	600.00	-9.09
SCHWAGER	Santia.	CLP	0.71	-8.97
ELIGSA	Santia.	CLP	249.99	-5.66
MELON	Santia.	CLP	0.65	-4.41

Per Turnover	Exchange	Amount (US\$)
GASNATURAL	Colomb.	48,021,332
SOM-B	Santia.	16,603,723
FALABELLA	Santia.	12,677,534
EXITO	Colomb.	9,535,394
BSANTANDER	Santia.	8,754,891

Per Volume	Exchange	Volume
VAPORES	Santia.	149,411,980
NORTEGRAN	Santia.	122,538,376
BSANTANDER	Santia.	111,461,278
ORO BLANCO	Santia.	109,742,571
CHILE	Santia.	40,084,234

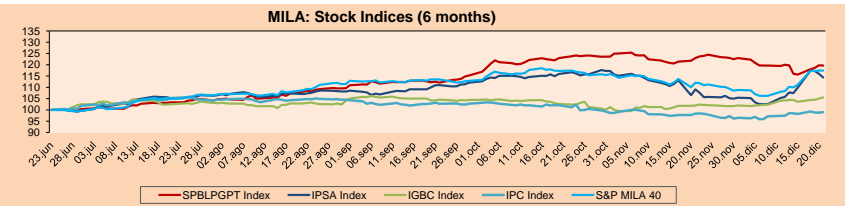
MILA

Peru: The General Index of the BVL of Peru ended today's session with a negative result of -0.09%. The index maintains a cumulative positive annual trend of +23.60% in local currency, while the yield adjusted to foreign currency is +26.95%. Then, the S&P/BVL Peru SEL obtained a positive return of +0.56%, while the S&P/BVL LIMA 25 grew +1.23%. The spot PEN reached 5/3.2675.

Chile: The IPISA index ended the day with a negative result of -1.41%. The sectors of the index with the downward results were Non-basic consumer products (-2.52%) and Industrial (-2.50%). On the other hand, the values with the most negative results were Ripley Corporación SA (-3.91%) and Antarchile SA (-3.67%).

Colombia: The COLCAP index had a positive return of +0.46%. The sectors of the index with the most favorable results were Telecommunications Services (+2.19%) and Energy (+0.91%). On the other hand, the stocks with the highest profits were Canacol Energy Ltd (+3.59%) and Banco de Bogotá SA (+2.24%).

Mexico: Mexico's IPC index closed today's session with a positive result of +0.22%. The sectors of the index that generated the highest results were Materials (+1.34%) and Non-basic consumer products (+0.87%). Finally, the stocks with the highest yields were Nemak SAB de CV (+2.30%) and Mexichem SAB de CV (+2.12%).

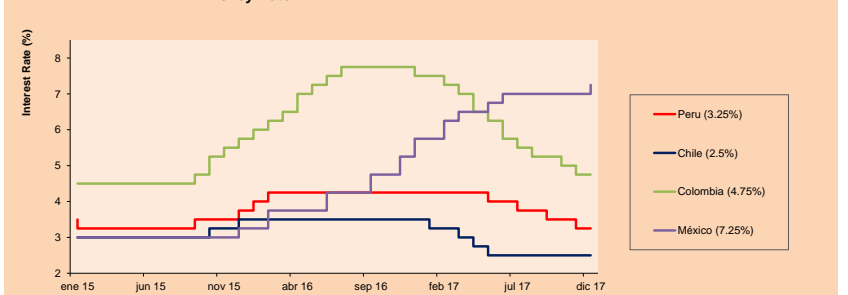


Base: 28/06/17=100
Source: Bloomberg

ETFs

	Curr.	Close	1D	5D	30 D	YTD	Exchange
▲ iShares MSCI All Peru Caped Index Fund	USD	39.5	1.49%	5.23%	-2.35%	25.02%	NYSE Arca
▼ iShares MSCI Chile Capped	USD	50.83	-0.98%	9.34%	6.84%	38.17%	BATS
▲ Global X MSCI Colombia	USD	14.25	0.42%	2.13%	2.42%	11.78%	NYSE Arca
▼ iShares MSCI Mexico Capped	USD	48.71	-1.22%	-1.63%	-3.58%	13.12%	NYSE Arca
▲ iShares MSCI Emerging Markets	USD	46.11	0.65%	1.60%	-1.85%	34.32%	NYSE Arca
▲ Vanguard FTSE Emerging Markets	USD	45.06	0.99%	2.18%	-0.76%	29.05%	NYSE Arca
▲ iShares Core MSCI Emerging Markets	USD	55.66	0.89%	1.77%	-1.48%	34.38%	NYSE Arca
▲ iShares JP Morgan Emerging Markets Bonds	USD	59.72	0.44%	1.18%	0.47%	25.10%	BATS
- Morgan Stanley Emerging Markets Domestic	USD	7.67	0.00%	1.03%	1.43%	15.89%	New York

MILA: Policy Rate



Source: Bloomberg

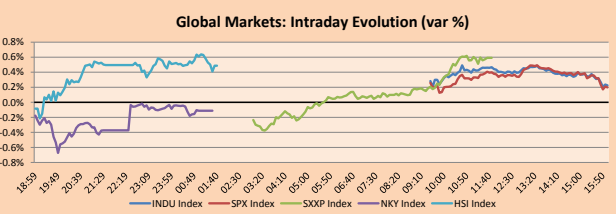
Capital Market Laboratory Coordinator: Economist Bruno Bellido Anicam
Support: Sebastián Butters, Kaori Olulol, Jairo Trujillo, Mario Villar
e-mail: pulsobursatil@ulima.edu.pe
facebook: www.facebook.com/pulsobursatil.ul
Phone number : 4376767 Anexx: 35340 - 35310

PULSO BURSÁTIL

WORLD

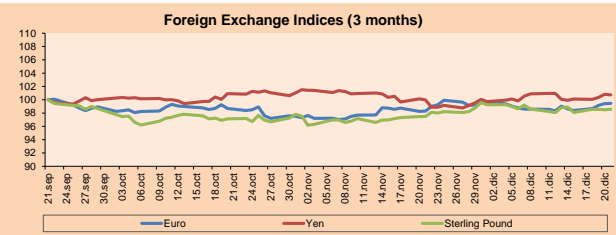
Main Indices	Close	1 D*	5 D*	1 M*	YTD*	Market Cap. (US\$ Mill.)
▲ Dow Jones (USA)	24,782.29	0.23%	-1.12%	5.05%	25.40%	6,815,974
▲ Standard & Poor's 500 (USA)	2,684.57	0.20%	1.23%	3.29%	19.91%	23,754,488
▲ NASDAQ Composite (USA)	6,965.36	0.06%	1.59%	1.50%	29.39%	10,769,810
▲ Stoxx EUROPE 600 (Europe)	390.69	0.60%	0.46%	0.67%	8.10%	8,708,674
▲ DAX (Germany)	13,109.74	0.31%	0.32%	-0.44%	14.19%	1,022,447
▲ FTSE 100 (United Kingdom)	7,603.98	1.05%	2.09%	2.00%	6.46%	1,550,871
▲ CAC 40 (France)	5,385.97	0.62%	0.54%	0.37%	10.77%	1,269,460
▲ IBEX 35 (Spain)	10,304.60	0.95%	1.26%	3.11%	10.18%	543,714
▲ MSCI AC Asia Pacific Index	171.61	0.01%	0.33%	0.01%	27.08%	14,655,300
▲ HANG SENG (Hong Kong)	29,367.06	0.45%	0.69%	-2.12%	33.48%	2,917,706
▲ SHANGHAI SE Comp. (China)	3,300.06	0.38%	0.23%	-3.80%	8.33%	5,004,684
▼ NIKKEI 225 (Japan)	22,866.10	-0.11%	0.76%	1.52%	19.63%	3,591,141
▲ BOVESPA (Brazil)	75,133.43	2.41%	3.73%	0.72%	24.75%	682,311
▲ Merval (Argentina)	28,480.71	1.47%	4.94%	4.45%	68.35%	109,337

*Legend: Variation 1D: 1 Day; 5D: 5 Days; 1M: 1 Month; YTD: Var.% 12/31/16 to date



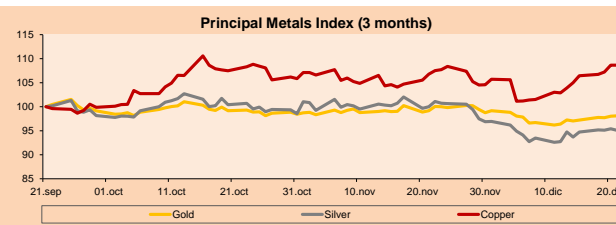
Currency	Price	1 D*	5 D*	1 M*	YTD*
▲ Euro	1.1876	0.04%	0.83%	1.18%	12.92%
▼ Yen	113.3000	-0.09%	0.81%	0.76%	-3.13%
▲ Sterling Pound	1.3387	0.08%	-0.33%	1.12%	8.48%
▲ Yuan	6.5848	0.10%	-0.37%	-0.67%	-5.19%
▼ Hong Kong Dollar	7.8184	-0.06%	0.12%	0.09%	0.81%
▲ Brazilian Real	3.3067	0.31%	-0.85%	1.60%	1.74%
▲ Argentine Peso	17.9406	1.04%	2.88%	2.60%	12.98%

*Legend: Variation 1D: 1 Day; 5D: 5 Days; 1M: 1 Month; YTD: Var.% 12/31/16 to date



Commodities	Close	1 D*	5 D*	1 M*	YTD*
▲ Oro (US\$ Oz. T) (LME)	1,266.83	-0.10%	1.11%	-1.07%	9.94%
▼ Plata (US\$ Oz. T) (LME)	16.13	-0.34%	1.50%	-4.92%	1.34%
▲ Cobre (US\$ TM) (LME)	6,997.75	0.00%	3.50%	-1.75%	26.70%
▲ Zinc (US\$ TM) (LME)	3,207.75	0.00%	0.65%	-0.41%	25.41%
▲ Petróleo WTI (US\$ Barril) (NYM)	58.22	0.22%	2.00%	2.28%	2.30%
▲ Estano (US\$ TM) (LME)	19,515.00	0.00%	2.92%	0.85%	-7.97%
▲ Plomo (US\$ TM) (LME)	2,518.75	0.00%	1.09%	2.07%	25.97%
▲ Molibdeno (US\$ TM) (LME)	15,634.00	0.00%	-0.03%	-0.04%	5.00%
▲ Aúzúcar #11 (US\$ Libra) (NYB-ICE)	14.77	1.37%	7.26%	-0.74%	-20.51%
▲ Cacao (US\$ TM) (NYB-ICE)	1,907.00	-1.24%	0.74%	-9.62%	-12.64%
▼ Café Arábica (US\$ TM) (NYB-ICE)	122.25	-0.73%	1.62%	-3.47%	-18.28%

*Lenda: Variación 1D: 1 Día; 5D: 5 Días; 1M: 1 Mes; YTD: Var.% 31/12/15 a la fecha



Equity

Wall Street (Stocks from S&P 500)

Largest gains	Curr.	Price	▲%	Exchange	Largest losses	Curr.	Price	▼%	Exchange
HES UN	USD	46.34	5.34	New York	SCG UN	USD	37.39	-9.51	New York
CHTR UW	USD	332.94	5.23	NASDAQ GS	EIX UN	USD	63.31	-7.31	New York
APA UN	USD	43.31	4.97	New York	ALGN UW	USD	218.76	-6.37	NASDAQ GS
DISCK UW	USD	22.16	4.92	NASDAQ GS	SRE UN	USD	106.91	-4.48	New York

Europe (Stocks from STOXX EUROPE 600)

Largest gains	Curr.	Price	▲%	Exchange	Largest losses	Curr.	Price	▼%	Exchange
TLW LN	GBP	202.1	4.77	Londres	AMEAS FH	EUR	22.68	-2.49	Helsinki
FTI FP	EUR	25.985	4.42	EN Paris	UNH GY	EUR	25.38	-2.01	Xetra
NHY NO	NOK	61.15	4.17	Oslo	CTEC LN	GBP	205.1	-1.91	Londres
NOKIA FH	EUR	4.028	3.98	Helsinki	HUIHV FH	EUR	35.28	-1.75	Helsinki

Global Overview

United States:

The US stock market ended the session with positive results, following the recent approval of the tax law in Washington. In more detail, the tax law includes a reduction in the corporate tax rate from 35% to 21%, expecting it to boost US companies, accelerating economic growth. On the other hand, in economic data, the growth rate of the US economy in the third quarter decreased slightly at an annual rate of 3.2% after the final revision of the GDP government. In addition, jobless claims increased 20,000 more than expected in the last week, this increase was caused by hurricanes at the beginning of September. However, layoffs remain low and the unemployment rate is the lowest in almost 17 years. On the business side, the price of biopharmaceutical company shares, Aeterna Zentaris, rose more than +40.00%, after the Food and Drug Administration of the United States approved its treatment of hormonal deficiency. Finally, the company Long Island Tech Tea, announced today that the parent company is changing its focus, to explore and invest in opportunities that take advantage of the benefits of Blockchain technology, this caused the stock price to shoot up around +179.10%.

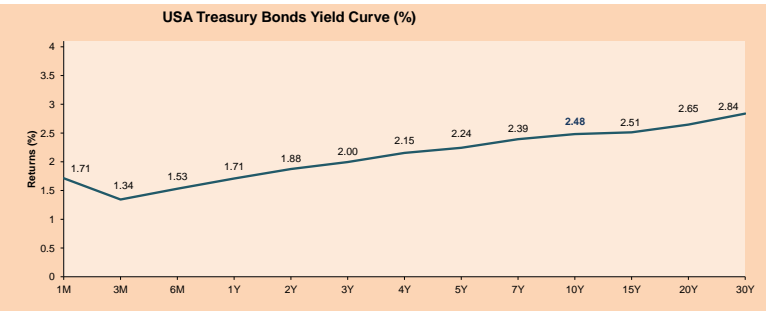
Europe:

The European stock market closed with positive results among its main indices. European actions are moving towards their best performance in years. Emmanuel Cau, global equity strategist at J.P. Morgan, he said, "clearly, 2017 was the year when global activity and global gains surprised to be on the rise." The European benchmark "Stoxx 600" had its biggest gain since 2013. Nick Nelson, head of European equity strategy at UBS, explained that this year's earnings are mainly due to two factors: 1) stronger earnings because the operational leverage finally started and 2) the macroeconomic data is getting stronger. In addition, he said that the big gains came from the manufacturers of automobiles, luxury products and mining and construction companies, which tend to have high operating leverage. The European Central Bank's updated forecast of GDP growth for this year is 2.4%, a record for business opinion surveys. On the other hand, the "blue-chip" shares of Germany have marked record highs growing by 14% this year, as well as the French stocks that grew close to 10% for 2017, which would be a maximum of nine years. The euro also had very good returns, the euro appreciated fairly quickly since April with the results of the French elections, as well as a maximum of six years of the manufacturing PMI in the Eurozone.

Asia:

The Asian stock market ended today's session with mixed results among its main indices. This was because investors evaluated the approval of changes in tax codes in the United States. In addition, after reaching 9-month highs and approaching the important level (psychologically speaking) of 2.5%, yields on ten-year US Treasury bonds fell a bit during the Asian trade. Consequently, although high yields generally help Japanese financial stocks, especially the insurance companies that invest a lot in bonds, the Nikkei 225 index fell by 0.1%. Not even the depreciation of the yen against the US dollar (from 113 yen per dollar to 113.43 yen per dollar), which helps exporters have greater international competitiveness, could boost the benchmark. Another market that had losses was South Korea, with its Kospi stock index falling 1.7% due to the 3.4% drop in the company Samsung Electronics. The latter happened because Morgan Stanley lowered its credit rating last month after strong gains this year. On the other hand, among the markets that had gains, the Shanghai index and the Hang Seng index (of Hong Kong) increased by 0.4% and 0.5%, respectively.

ETF's	Curr.	Close	1D	5D	30 D	YTD	Exchange
SPDR S&P 500 ETF TRUST	USD	267.58	0.21%	1.24%	3.45%	22.03%	NYSE Arca
ISHARES MSCI EMERGING MARKET	USD	46.11	0.65%	1.60%	-1.85%	34.32%	NYSE Arca
ISHARES IBOX USD HIGH YIELD	USD	86.92	0.10%	0.09%	-0.02%	5.66%	NYSE Arca
FINANCIAL SELECT SECTOR SPDR	USD	28.13	0.86%	2.07%	7.20%	22.95%	NYSE Arca
VANECK VECTORS GOLD MINERS E	USD	22.63	0.58%	3.36%	0.41%	9.05%	NYSE Arca
ISHARES RUSSELL 2000 ETF	USD	153.47	0.44%	2.63%	1.95%	15.34%	NYSE Arca
SPDR GOLD SHARES	USD	120.31	0.14%	1.16%	-0.99%	9.76%	NYSE Arca
ISHARES 20+ YEAR TREASURY BO	USD	124.60	0.58%	-2.35%	-1.28%	7.24%	NASDAQ GM
POWERSHARES QQQ TRUST SERIES	USD	157.55	0.01%	1.28%	1.53%	34.19%	NASDAQ GM
ISHARES NASDAQ BIOTECHNOLOGY	USD	106.80	0.25%	1.67%	3.24%	21.11%	NASDAQ GM
ENERGY SELECT SECTOR SPDR	USD	71.82	2.12%	4.42%	7.24%	-1.49%	NYSE Arca
PROSHARES ULTRA VIX ST FUTUR	USD	9.97	-1.38%	-10.34%	-26.64%	-94.30%	NYSE Arca
UNITED STATES OIL FUND LP	USD	11.64	0.26%	1.84%	2.11%	-0.68%	NYSE Arca
ISHARES MSCI BRAZIL CAPPED E	USD	39.53	1.83%	4.15%	-1.31%	20.65%	NYSE Arca
SPDR S&P OIL & GAS EXP & PR	USD	36.66	2.75%	6.52%	5.85%	-10.74%	NYSE Arca
UTILITIES SELECT SECTOR SPDR	USD	52.37	-1.19%	-4.47%	-5.25%	11.39%	NYSE Arca
ISHARES US REAL ESTATE ETF	USD	79.34	-0.36%	-2.36%	-2.88%	7.05%	NYSE Arca
SPDR S&P BIOTECH ETF	USD	83.08	1.14%	2.21%	2.20%	40.74%	NYSE Arca
ISHARES IBOX INVESTMENT GRA	USD	120.56	0.27%	-0.68%	0.23%	6.17%	NYSE Arca
ISHARES JPMORGAN USD EMERGI	USD	115.36	-0.01%	-0.15%	0.70%	9.58%	NASDAQ GM
REAL ESTATE SELECT SECT SPDR	USD	32.21	-0.34%	-2.64%	-3.25%	8.24%	NYSE Arca
ISHARES CHINA LARGE-CAP ETF	USD	45.71	1.88%	1.32%	-3.34%	34.90%	NYSE Arca
CONSUMER STAPLES SPDR	USD	56.78	-0.07%	0.96%	4.23%	12.76%	NYSE Arca
VANECK VECTORS JUNIOR GOLD M	USD	33.07	1.07%	4.89%	3.48%	4.85%	NYSE Arca
SPDR B&B BARC HIGH YIELD BND	USD	36.56	0.03%	0.09%	0.02%	6.02%	NYSE Arca
VANGUARD RETI ETF	USD	81.27	-0.39%	-2.39%	-2.94%	2.74%	NYSE Arca



Capital Market Laboratory Coordinator: Economist Bruno Bellido Anicama
Support: Sebastián Butters, Kaori Olulio, Jairo Trujillo, Mario Villar
e-mail: pulsobursatil@ulima.edu.pe
facebook: www.facebook.com/pulsobursatil.ul
Phone number : 4376767 Anexos: 35340 - 35310

PULSO BURSÁTIL

LIMA

Stocks

Ticker	Currency	Price	1D*	5D*	30D*	YTD*	Frequency	Volume (US\$)	Beta	Dividend Yield (%)	Price Earning	Market Cap. (M US\$)	Economic Sector*	Index Weight
ALICORC1 PE**	S/.	10.30	0.00%	3.52%	0.29%	43.67%	100.00%	801,066	0.90	1.36	21.61	2,691.68	Industrial	3.53%
ATACOBC1 PE**	S/.	0.58	3.57%	0.00%	-3.33%	45.00%	100.00%	241,727	2.26	0.00	-	193.22	Mining	1.02%
BACKUSI1 PE**	S/.	18.40	0.00%	0.00%	-0.54%	19.19%	78.95%	183,265	0.41	0.00	2.58	8,911.41	Industrial	0.82%
BAP PE**	US\$	200.30	-2.32%	1.93%	-5.32%	32.76%	100.00%	213,000	1.05	4.29	-	15,917.20	Diverse	5.82%
BVN PE**	US\$	13.71	0.81%	6.11%	-4.26%	20.05%	100.00%	185,100	1.24	0.61	-	3,778.95	Mining	5.88%
CASAGRC1 PE**	S/.	5.55	0.91%	-2.63%	-13.95%	-13.38%	100.00%	16,189	0.57	7.27	14.82	143.08	Agricultural	1.31%
CONTINC1 PE**	S/.	4.00	0.00%	2.56%	-5.88%	15.34%	94.74%	318	0.78	0.00	14.70	5,977.99	Finance	2.85%
CORAREI1 PE**	S/.	0.70	0.00%	4.48%	-9.09%	51.19%	100.00%	73,797	1.55	5.34	9.35	270.78	Industrial	1.72%
CPACASC1 PE**	S/.	7.78	-0.77%	-0.51%	-3.35%	30.06%	100.00%	231,391	0.57	4.50	29.41	1,017.06	Industrial	2.38%
CVERDEC1 PE**	US\$	28.00	-0.36%	7.69%	-0.88%	46.52%	100.00%	254,060	1.38	0.00	39.65	9,801.57	Mining	5.25%
ENGEPEC1 PE**	S/.	1.79	1.13%	-10.50%	-12.68%	-29.19%	78.95%	21,734	0.87	3.56	17.16	1,584.96	Public Services	1.44%
ENDISPC1**	S/.	5.25	0.00%	-2.42%	-11.02%	-11.79%	89.47%	16,068	0.95	3.63	11.34	1,026.03	Public Services	0.98%
FERREYC1 PE**	S/.	2.45	3.38%	5.60%	-5.77%	55.06%	100.00%	707,133	1.17	5.24	8.86	760.57	Diverse	4.90%
GRAMONC1 PE**	S/.	1.80	-1.64%	-3.23%	-13.46%	-61.70%	100.00%	40,711	1.51	0.00	10.89	363.62	Diverse	4.05%
IFS PE**	US\$	36.20	1.26%	0.58%	-4.74%	17.75%	100.00%	202,970	0.56	3.59	12.98	4,094.61	Diverse	7.22%
INRETC1 PE**	US\$	19.30	1.31%	-2.03%	-8.96%	0.62%	100.00%	16,675	1.00	1.01	23.62	1,984.18	Diverse	5.28%
LUSURC1 PE**	S/.	11.65	1.22%	1.06%	-1.88%	-6.14%	100.00%	79,700	0.49	5.32	13.65	1,736.24	Public Services	1.81%
MILPOC1 PE**	S/.	4.26	2.65%	1.43%	-2.07%	48.90%	100.00%	271,861	1.13	20.12	9.48	1,728.09	Mining	1.56%
MINSUR1 PE**	S/.	1.62	0.00%	2.53%	-16.92%	15.96%	84.21%	76,757	1.64	4.25	5.58	1,429.41	Mining	3.09%
PML PE**	US\$	0.28	0.00%	0.72%	-6.67%	102.90%	89.47%	24,276	1.22	0.00	-	72.73	Mining	2.12%
RELAPAC1 PE**	S/.	0.28	2.55%	0.71%	-7.54%	21.03%	100.00%	49,613	1.30	0.00	4.27	305.09	Industrial	2.12%
SCCO PE**	US\$	46.60	0.76%	8.78%	6.95%	46.48%	100.00%	338,111		1.27	30.26	36,023.13	Mining	2.14%
SIDERC1 PE**	S/.	0.45	-1.52%	-0.44%	-4.43%	37.27%	94.74%	41,691	1.68	0.00	4.13	170.24	Industrial	1.43%
TV PE**	US\$	1.12	-0.88%	0.00%	2.75%	31.76%	89.47%	118,348	1.58	0.00	-	924.67	Mining	2.93%
UNACEMC1 PE**	S/.	2.89	-0.34%	3.21%	-3.67%	15.19%	100.00%	603,293	0.76	1.80	31.02	1,456.32	Industrial	3.00%
VOLCABC1 PE**	S/.	1.27	3.25%	4.10%	-4.51%	80.65%	100.00%	890,631	1.84	2.04	16.21	1,584.52	Mining	5.90%

Quantity of shares: 26

Source: Bloomberg, Económática

* Bloomberg Industry Classification System

** PER is used in the stock market and original currency of the instrument

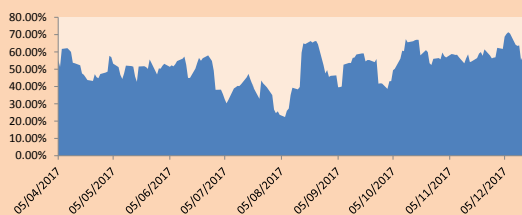
*Legend: Variation 1D: 1 Day; 5D: 5 Days; 1M: 1 Month; YTD: Var.% 12/31/16 to date

Sectorial Indices

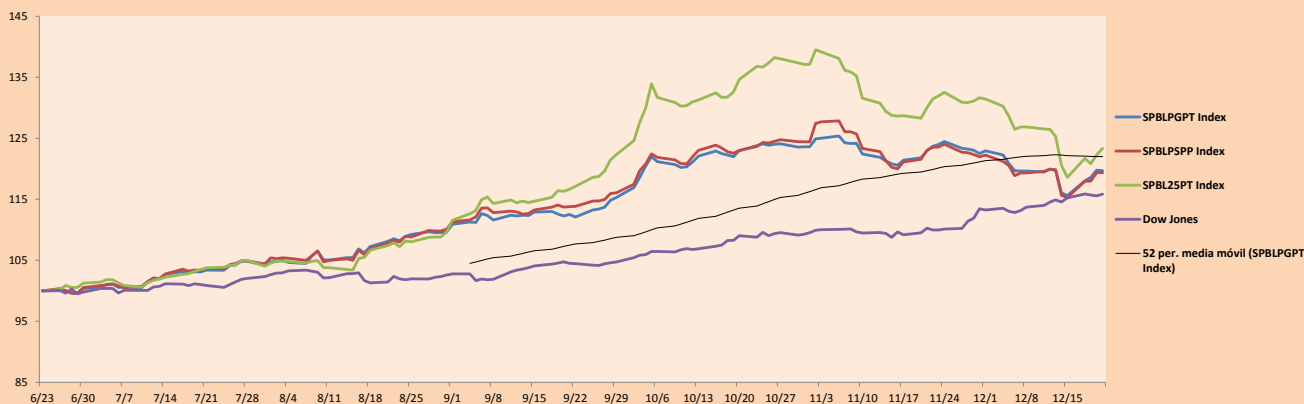
	Close	1D*	5D*	30D*	YTD*	Beta
▲ Mining Index	344.85	0.78%	6.54%	1.19%	38.85%	1.31
▲ Consumer Index	869.12	0.34%	1.45%	-2.63%	27.62%	0.57
▲ Industrial Index	226.23	0.72%	2.09%	-5.96%	2.32%	0.99
▼ Banking and Financial Index	1,038.05	-2.01%	2.54%	-4.10%	27.19%	1.06
▼ Construction Index	254.28	-0.72%	0.32%	-5.91%	-14.01%	0.85
▲ Services Index	383.15	0.68%	-3.09%	-8.64%	-20.81%	0.31
▲ Juniors Index	39.85	0.84%	3.78%	-5.84%	42.02%	1.30
▲ Electric Index	374.05	0.68%	-3.09%	-8.64%	-20.81%	0.31

*Legend: Variation 1D: 1 Day; 5D: 5 Days; 1M: 1 Month; YTD: Var.% 12/31/16 to date

Correlation Graph of Returns of Mining Index against Metallic Index of London (3 months)



Indices (6 months)



Source: Bloomberg

Capital Market Laboratory Coordinator: Economist Bruno Bellido Anicama

Support: Sebastián Butters, Kaori Olulo, Jairo Trujillo, Mario Villar

e-mail: pulsobursatil@ulima.edu.pe

facebook: www.facebook.com/pulsobursatil.ul

Phone number : 4376767 Anexxes: 35340 - 35310

The content of this document is just for informational purposes . The information and opinions expressed should not be consider as recommendations for future decisions . Under any circumstances, the Capital Market Laboratory of University of Lima will be responsible for the use of the statements in this document.

PULSO BURSÁTIL

SOVEREIGN RATING

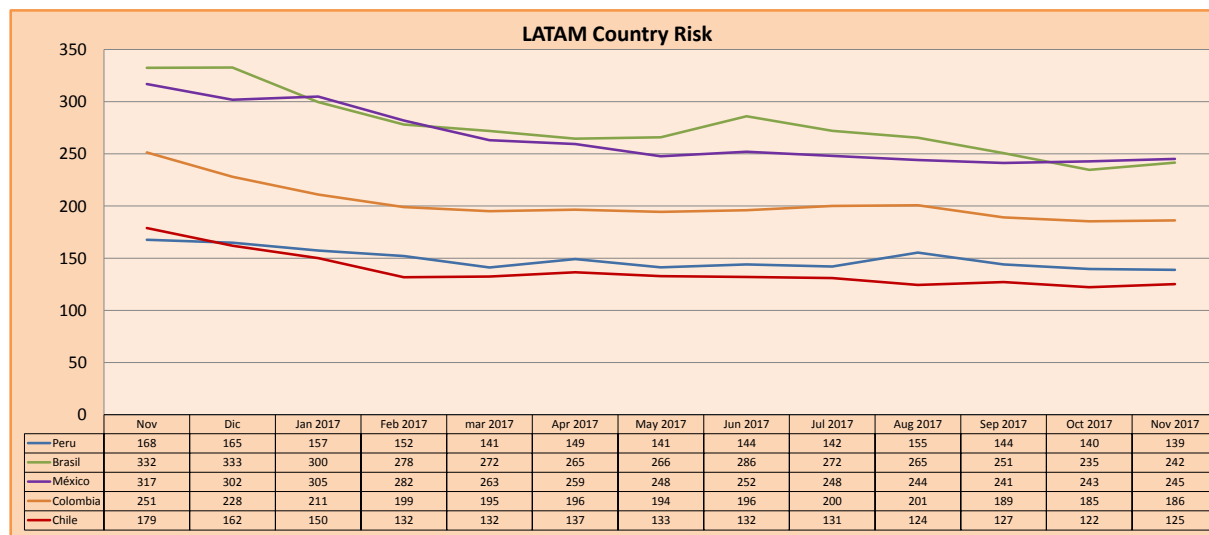
RISK RATINGS

Moody's	S&P	Fitch	
Aaa	AAA	AAA	Prime
Aa1	AA+	AA+	High credit quality
Aa2	AA	AA	
Aa3	AA-	AA-	
A1	A+	A+	Medium-high grade, with low credit risk
A2	A	A	
A3	A-	A-	
Baa1	BBB+	BBB+	Moderate Credit Risk
Baa2	BBB	BBB	
Baa3	BBB-	BBB-	
Ba1	BB+	BB+	It has speculative elements and it is subject to substantial credit risk
Ba2	BB	BB	
Ba3	BB-	BB-	
B1	B+	B+	It is considered speculative and it has high credit risk
B2	B	B	
B3	B-	B-	
Caa1	CCC+		
Caa2	CCC		Bad credit conditions and it is subject to high credit risk
Caa3	CCC-	CCC	
Ca	CC		
	C		Very close to default or in default
	D	DDD	
		DD	
		D	

Source: Bloomberg

Latin America Credit Rating			
Clasificadora de riesgo			
Country	Moody's	Fitch	S&P
Peru	A3	BBB+	BBB+
Mexico	A3	BBB+	BBB+
Venezuela	Caa3	RD	SD
Brazil	Ba2	BB	BB
Colombia	Baa2	BBB	BBB-
Chile	Aa3	A	A+
Argentina	B2	B	B+
Panama	Baa2	BBB	BBB

Source: Bloomberg



Source: Bloomberg

Capital Market Laboratory Coordinator: Economist Bruno Bellido Anicama
 Support: Sebastián Butters, Kaori Olulo, Jairo Trujillo, Mario Villar
 e-mail: pulsobursatil@ulima.edu.pe
 facebook: www.facebook.com/pulsobursatil.ul
 Phone number : 4376767 Anexos: 35340 - 35310

The content of this document is just for informational purposes. The information and opinions expressed should not be considered as recommendations for future decisions. Under any circumstances, the Capital Market Laboratory of University of Lima will be responsible for the use of the statements in this document.