

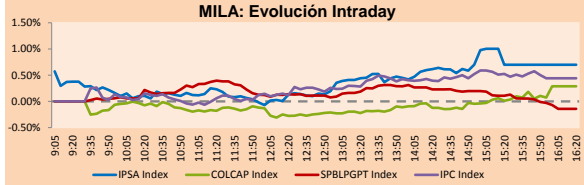
PULSO BURSÁTIL

Lima, January 17, 2018

MILA

Main Indices	Close	1 D	5 D	1 M	YTD	Market Cap. (US\$ bill)
▲ IPSA (Chile)	5,786.15	0.70%	1.34%	10.54%	3.98%	228.95
▲ IGPA (Chile)	29,076.71	0.57%	1.25%	10.83%	3.92%	263.89
▲ IGBC (Colombia)	11,832.37	0.37%	0.19%	7.45%	3.09%	112.39
▲ COLCAP (Colombia)	1,543.54	0.29%	0.38%	5.36%	1.97%	114.03
▼ S&P/BVL (Perú)*	20,808.96	-0.14%	1.24%	11.94%	4.18%	110.89
▼ S&P/BVL SEL (Perú)	383.64	-0.43%	1.23%	12.44%	4.24%	88.74
▼ S&P/BVL LIMA 25	31,913.83	-0.73%	0.12%	13.64%	3.73%	102.78
▲ IPC (México)	49,730.51	0.49%	1.94%	3.43%	0.77%	315.28
▼ S&P MILA 40	768.00	-0.09%	1.65%	13.49%	5.34%	327.77

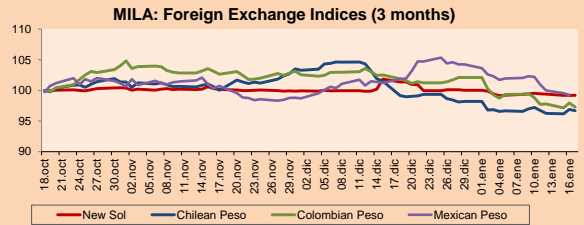
* Market Cap. Of the last price Legend: Variation 1D: 1 day, 5D: 5 days, 1M: 1 Month, YTD: Var%12/31/17 to date



Source: Bloomberg

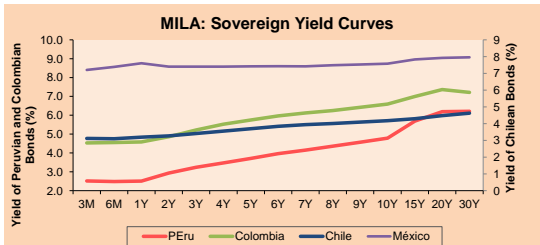
Currency	Price	1D*	5D*	30 D*	YTD*
▲ New Sol (PEN)	3,2108	0.01%	-0.35%	-2.15%	-0.83%
▼ Chilean Peso (CLP)	605.92	-0.23%	-0.56%	-2.49%	-1.55%
▼ Colombian Peso (COP)	2,845.13	-0.68%	-1.54%	-4.50%	-4.71%
▼ Mexican Peso (MXN)	18.72	-0.28%	-3.00%	-1.93%	-4.80%

*Legend: Variation 1D: 1 day, 5D: 5 days, 1M: 1 Month, YTD: Var%12/31/17 to date



Base: 18/10/17=100 Source: Bloomberg

Instrument	Currency	Price	Bid Yield (%)	Ask Yield (%)	Duration
PERU 4.125 08/25/2027	USD	108.827	3.08	3.04	7.91
PERU 7.125 03/30/19	USD	106.098	2.09	1.80	1.13
PERU 7.35 07/21/25	USD	129.533	2.97	2.91	5.90
PERU 8.75 11/21/33	USD	158.5	3.83	3.77	10.10
PERU 6.55 03/14/37	USD	136.2	3.88	3.84	11.64
PERU 5.625 11/18/2050	USD	128.953	4.04	4.02	17.01
CHILE 2.25 10/30/22	USD	98.215	2.68	2.62	4.50
CHILE 3.875 08/05/20	USD	103.99	2.29	2.22	2.39
CHILE 3.625 10/30/2042	USD	100.46	3.61	3.58	16.35
COLOM 11.75 02/25/20	USD	119.262	2.36	2.24	1.85
COLOM 11.85 03/09/28	USD	170.131	3.58	3.52	6.85
COLOM 10.375 01/28/33	USD	157.253	4.99	4.88	8.92
COLOM 7.375 09/18/37	USD	135.003	4.66	4.63	11.51
COLOM 6.125 01/18/41	USD	121.315	4.63	4.60	13.37
MEX 4 10/02/23	USD	103.958	3.26	3.21	5.06
MEX5.55 01/45	USD	111.745	4.787	4.756	14.4



Source: Bloomberg

Equity	Exchange	Amt.	Price	▲%
Largest gains				
CIC	Santia.	CLP	25.00	6.38
AQUACHILE	Santia.	CLP	360.00	3.59
Enjoy	Santia.	CLP	59.70	2.93
FORUS	Santia.	CLP	2751.50	2.60
Largest losses				
SQM-B	Santia.	CLP	36424.00	-5.13
BINSURI1	Lima	PEN	1.91	-4.50
BESALCO	Santia.	CLP	735.73	-3.85
DNT	Lima	USD	0.11	-3.64

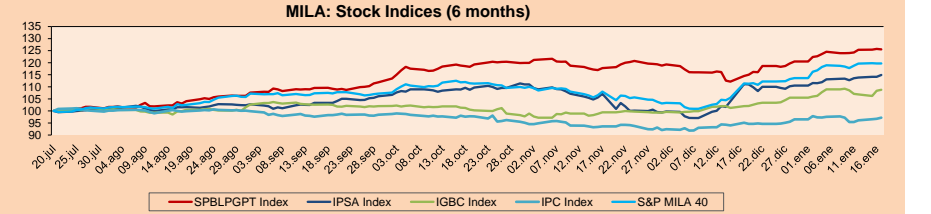
Per Turnover	Exchange	Amount (US\$)	Per Volume	Exchange	Volume
SQM-B	Santia.	75,818,293	ORO BLANCO	Santia.	146,534,095
FALABELLA	Santia.	25,368,811	BSANTANDER	Santia.	137,936,701
ECOPETROL	Colomb.	23,271,411	NAVIERA	Santia.	121,243,729
CENCOSUD	Santia.	23,059,661	CHILE	Santia.	70,560,644
ANDINA-B	Santia.	17,032,876	VAPORES	Santia.	46,044,689

MILA
Peru: The General Index of the BVL of Peru ended today's session with a negative result of -0.14%. The index maintains a cumulative positive annual trend of +4.18% in local currency, while the adjusted return to foreign currency is +5.05%. Then, the S&P/BVL Peru SEL obtained a negative yield of -0.43%, while the S&P/BVL LIMA 25 decreased -0.73%. The spot PEN reached S/3.2060.

Chile: The IPSA index ended the day with a positive result of +0.70%. The sectors of the index with the upward results were Real Estate (+2.44%) and Public Services (+1.81%). On the other hand, the securities with the most positive results were Lan Airlines SA (+3.52%) and Enel Americas SA (+3.19%).

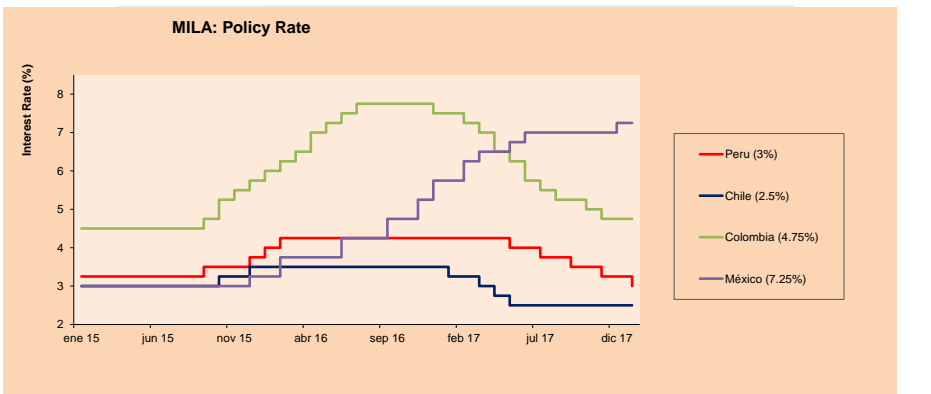
Colombia: The COLCAP index had a positive return of +0.29%. The sectors of the index with the most favorable results were Energy (+1.77%) and Public Services (+0.72%). On the other hand, the shares with the highest profits were Banco Davivienda SA (+2.56%) and Cementos Argos SA (+1.94%).

Mexico: Mexico's IPC index closed today's session with a positive result of +0.48%. The sectors of the index that generated the highest results were Health (+1.72%) and Industrial (+1.36%). Finally, the stocks with the highest yields were Grupo Lala SAB de CV (+4.27%) and Grupo Aeroportuario del Pacifico SAB de CV (+2.80%).



Base: 21/07/17=100 Source: Bloomberg

ETFs	Curr.	Close	1D	5D	30 D	YTD	Exchange
▼ iShares MSCI All Peru Caped Index Fund	USD	43.06	-0.14%	1.80%	10.67%	5.08%	NYSE Arca
▲ iShares MSCI Chile Capped	USD	55	0.95%	1.66%	5.14%	5.44%	BATS
▲ Global X MSCI Colombia	USD	15.105	0.17%	1.56%	6.45%	4.63%	NYSE Arca
▲ iShares MSCI Mexico Capped	USD	52.24	1.10%	5.58%	2.88%	5.98%	NYSE Arca
▲ iShares MSCI Emerging Markets	USD	49.97	1.32%	2.52%	7.03%	6.05%	NYSE Arca
▲ Vanguard FTSE Emerging Markets	USD	48.91	1.41%	2.64%	8.98%	6.53%	NYSE Arca
▲ iShares Core MSCI Emerging Markets	USD	60.24	1.29%	2.48%	6.81%	5.87%	NYSE Arca
▲ iShares JP Morgan Emerging Markets Bonds	USD	63.66	0.94%	2.02%	4.93%	4.77%	BATS
▼ Morgan Stanley Emerging Markets Domestic	USD	8.05	-0.37%	1.77%	3.74%	4.55%	New York



Source: Bloomberg



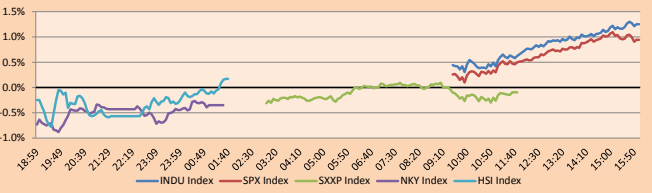
PULSO BURSÁTIL

WORLD

Main Indices	Close	1 D*	5 D*	1 M*	YTD*	Market Cap. (US\$ MILL.)
▲ Dow Jones (USA)	26,115.65	1.25%	2.88%	5.94%	5.65%	7,027,163
▲ Standard & Poor's 500 (USA)	2,802.56	0.94%	1.86%	4.74%	4.82%	24,610,226
▲ NASDAQ Composite (USA)	7,298.28	1.03%	1.88%	5.21%	5.72%	11,365,463
▼ Stoxx EUROPE 600 (Europe)	397.97	-0.10%	-0.16%	2.52%	2.26%	8,713,986
▼ DAX (Germany)	13,163.96	-0.47%	-0.73%	0.81%	2.06%	1,011,122
▼ FTSE 100 (United Kingdom)	7,725.43	-0.39%	-0.30%	3.14%	0.49%	1,540,817
▼ CAC 40 (France)	5,493.99	-0.36%	-0.19%	2.70%	3.42%	1,267,751
▼ IBEX 35 (Spain)	10,474.60	-0.44%	0.44%	3.19%	4.29%	544,815
▼ MSCI AC Asia Pacific Index	182.83	0.43%	1.08%	5.15%	5.19%	15,589,559
▲ HANG SENG (Hong Kong)	31,983.41	0.25%	2.93%	10.10%	6.90%	3,257,876
▲ SHANGHAI SE Comp. (China)	3,444.67	0.24%	0.67%	5.41%	4.16%	5,381,965
▼ NIKKEI 225 (Japan)	23,868.34	-0.35%	0.34%	4.22%	4.85%	3,793,664
▲ BOVESPA (Brazil)	81,589.16	1.70%	3.82%	11.82%	6.27%	769,883
▲ Merval (Argentina)	33,598.21	0.23%	6.21%	24.34%	11.75%	132,954

*Legend: Variation 1D: 1 Day; 5D: 5 Days; 1M: 1 Month; YTD: Var.% 12/31/17 to date

Global Markets: Intraday Evolution (var %)

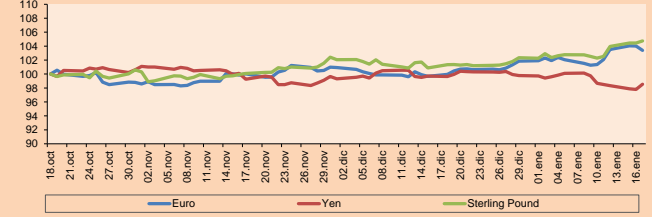


Source: Bloomberg

Currency	Price	1 D*	5 D*	1 M*	YTD*
▼ Euro	1,2186	-0.60%	1.99%	3.43%	1.51%
▲ Yen	111,2800	0.75%	-0.14%	-1.13%	-1.25%
▲ Sterling Pound	1,3832	0.29%	2.41%	3.36%	2.36%
▼ Yuan	6,4343	-0.15%	-1.14%	-2.75%	-1.11%
▼ Hong Kong Dollar	7,8182	-0.06%	-0.05%	0.04%	0.05%
▼ Brazilian Real	3,2223	-0.06%	-0.40%	-2.02%	-2.72%
▼ Argentine Peso	18,8569	-0.19%	1.21%	7.33%	1.25%

*Legend: Variation 1D: 1 Day; 5D: 5 Days; 1M: 1 Month; YTD: Var.% 12/31/17 to date

Foreign Exchange Indices (3 months)

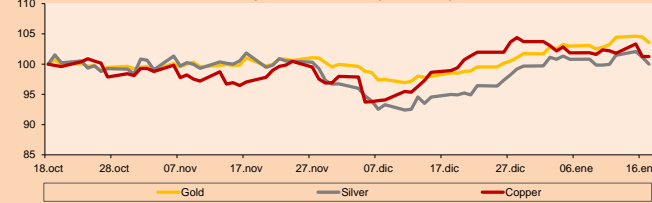


Base: 18/10/17=100
Source: Bloomberg

Commodities	Close	1 D*	5 D*	1 M*	YTD*
▼ Oro (US\$ Oz. T) (LME)	1,327.15	-0.84%	0.78%	5.13%	1.85%
▼ Plata (US\$ Oz. T) (LME)	17.00	-1.13%	0.16%	5.29%	0.35%
- Cobre (US\$ TM) (LME)	7,035.75	0.00%	-1.08%	2.35%	-2.38%
- Zinc (US\$ TM) (LME)	3,448.75	0.00%	2.72%	8.14%	3.36%
▲ Petróleo WTI (US\$ Barril) (NYM)	64.06	0.52%	0.77%	11.95%	6.02%
- Estafío (US\$ TM) (LME)	20,500.00	0.00%	2.03%	5.83%	2.01%
- Plomo (US\$ TM) (LME)	2,542.00	0.00%	-0.72%	-1.64%	2.30%
- Molibdeno (US\$ TM) (LME)	15,635.00	0.00%	0.00%	0.01%	-0.02%
▼ Azúcar #11 (US\$ Libra) (NYB-ICE)	13.42	-1.25%	-8.40%	-2.47%	-11.48%
▲ Cacao (US\$ TM) (NYB-ICE)	1,985.00	2.74%	2.27%	3.28%	4.92%
▲ Café Arábica (US\$ TM) (NYB-ICE)	123.10	2.20%	-0.69%	0.98%	-2.46%

*Legend: Variación 1D: 1 Día; 5D: 5 Días; 1M: 1 Mes; YTD: Var.% 31/12/17 a la fecha

Principal Metals Index (3 months)



Base: 18/10/17=100
Source: Bloomberg

Equity

Wall Street (Stocks from S&P 500)

Largest gains	Curr.	Price	▲ %	Exchange	Largest losses	Curr.	Price	▼ %	Exchange
TXN UW	USD	119.16	5.53	NASDAQ GS	FAST UW	USD	52.2	-5.84	NASDAQ GS
KLAC UW	USD	113.49	5.42	NASDAQ GS	DISH UW	USD	45.45	-5.29	NASDAQ GS
AMAT UW	USD	57.34	5.21	NASDAQ GS	GE UN	USD	17.35	-4.72	New York
BA UN	USD	351.01	4.73	New York	XRAY UW	USD	62.65	-4.57	NASDAQ GS

Europe (Stocks from STOXX EUROPE 600)

Largest gains	Curr.	Price	▲ %	Exchange	Largest losses	Curr.	Price	▼ %	Exchange
UBM LN	GBP	880.5	11.95	Londres	SKAB SS	SEK	159.1	-8.09	Stockholm
RR/ LN	GBP	900	5.44	Londres	INF LN	GBP	705	-5.67	Londres
ASML NA	EUR	161.25	4.95	EN Amsterdam	CO FP	EUR	48.1	-5.20	EN Paris
ZAL GY	EUR	46.69	4.71	Xetra	PERSON LN	GBP	685	-4.65	Londres

Global Overview

United States:

The US stock market ended the day with positive results, due to the optimistic report of the Beige Book of the Federal Reserve, which shows the current economic conditions of the 12 Federal Reserve Districts. In more detail, the reports indicated that the economy continued to grow at a moderate pace in most regions from the end of November to the end of the year. In addition, employment growth varied moderately and most districts indicated that wages increased modestly. A couple of districts mentioned the layoffs, but even in those districts, as in other regions, it was said that most of the companies that responded had additional employment, in the network. In addition, on the issue of prices, an increase in the price of inputs caused by the increase in coal, natural gas and construction materials was reported. Finally, the shares of Ford Motor Co. reached their lowest level in almost two months, caused by lower projected earnings this year because the higher costs of raw materials and unfavorable exchange rates reduce the gains from the reduction in costs and the continuous demand of their trucks.

Europe:

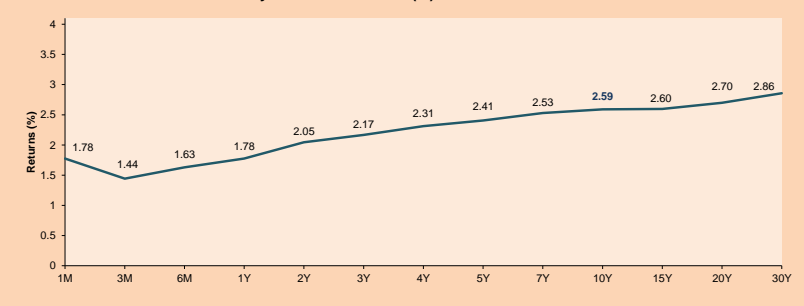
The European stock market ended the day today with negative results among its main indices. European stocks followed losses on Wall Street on Tuesday, after the Dow Jones Industrial Average reversed its positive trend, ending in negative territory after having surpassed the 26,000-point level for the first time in its history. However, both European and American stocks have made a good start in 2018, thanks to the companies' more solid earnings expectations and a continuous improvement in global economic growth. Also, some strategists suggest that the growing concerns about a possible closure of the US government weigh on the decisions of investors in the day. In corporate news, the shares of luxury goods maker, Burberry Group PLC, fell -9.30% in the session after they reported that retail sales fell 2% in the third quarter of last year. For its part, the actions of the publisher of education, Pearson PLC, finished at -4.65% after they announced that in 2017 their underlying income fell by 2% in the first nine months of the year. In this way, the UK benchmark, the FTSE 100, ended in negative, closing at -0.39% for the third consecutive session.

Asia:

The Asian stock market closed the day with mixed results among its main indices. Hong Kong shares marked a new closing high of all time. The Hang Seng index reached 31,983.41, its highest figure so far. On the other hand, the Shanghai composite index ended with positive results, as banking stocks remained strong. On the other hand, the Australian index "S & P / ASX" lost today due to falls in mining stocks as copper futures lost performance. In Japan, the "Nikkei 225" index fell despite reaching new highs on Tuesday. In New Zealand, stocks continue to grow to finish at the highs of the session. Regarding Bitcoin, today fell after a large wave of sales on Tuesday. The spot price fell close to -15% to \$ 9,600, according to CoinDesk statistics. This placed the currency at its lowest level since the end of November. Tuesday's sales are largely attributed to concerns about further regulatory research in South Korea and in other countries. In South Korea, more than 200,000 signatures were collected to request government actions against a possible cryptocurrency bubble. Chris Weston, IG's chief market strategist, explained "the flow of news is largely subtracting from the sentiment, and it seems that a strong bullish catalyst is lacking".

ETFs	Curr.	Close	1D	5D	30 D	YTD	Exchange
SPDR S&P 500 ETF TRUST	USD	279.61	0.95%	2.00%	4.25%	4.78%	NYSE Arca
ISHARES MSCI EMERGING MARKET	USD	49.97	1.32%	2.52%	7.03%	6.05%	NYSE Arca
ISHARES IBOXX USD HIGH YIELD	USD	87.54	0.01%	0.11%	0.27%	0.32%	NYSE Arca
FINANCIAL SELECT SECTOR SPDR	USD	29.37	0.75%	1.87%	4.67%	5.23%	NYSE Arca
VANECK VECTORS GOLD MINERS E	USD	23.94	-1.76%	2.97%	8.03%	3.01%	NYSE Arca
ISHARES RUSSELL 2000 ETF	USD	157.62	0.95%	1.80%	2.15%	3.38%	NYSE Arca
SPDR GOLD SHARES	USD	126.14	-0.81%	0.89%	5.35%	2.01%	NYSE Arca
ISHARES 20+ YEAR TREASURY BO	USD	124.87	-0.14%	0.86%	-1.82%	-1.57%	NASDAQ GM
POWERSHARES QQQ TRUST SERIES	USD	165.79	1.08%	2.23%	4.51%	6.44%	NASDAQ GM
ISHARES NASDAQ BIOTECHNOLOGY	USD	111.41	0.73%	0.45%	4.75%	4.35%	NASDAQ GM
ENERGY SELECT SECTOR SPDR	USD	77.11	0.88%	2.62%	11.35%	6.71%	NYSE Arca
PROSHARES ULTRA VIX ST FUTUR	USD	9.34	-4.21%	6.38%	-7.34%	-8.52%	NYSE Arca
UNITED STATES OIL FUND LP	USD	12.78	0.69%	0.79%	11.71%	6.41%	NYSE Arca
ISHARES MSCI BRAZIL ETF	USD	43.86	1.51%	3.66%	11.83%	8.43%	NYSE Arca
SPDR S&P OIL & GAS EXP & PR	USD	39.33	0.85%	2.21%	13.18%	5.78%	NYSE Arca
UTILITIES SELECT SECTOR SPDR	USD	50.46	0.62%	-0.55%	-7.26%	-4.21%	NYSE Arca
ISHARES US REAL ESTATE ETF	USD	77.72	0.71%	-0.18%	-6.27%	-4.06%	NYSE Arca
SPDR S&P BIOTECH ETF	USD	88.02	1.36%	-0.64%	7.58%	3.71%	NYSE Arca
ISHARES IBOXX INVESTMENT GRA	USD	120.61	-0.27%	0.07%	-0.68%	-0.78%	NYSE Arca
ISHARES JP MORGAN USD EMERGI	USD	116.17	0.03%	0.31%	0.00%	0.06%	NASDAQ GM
REAL ESTATE SELECT SECT SPDR	USD	31.52	0.57%	-0.32%	-5.35%	-4.31%	NYSE Arca
ISHARES CHINA LARGE-CAP ETF	USD	50.72	1.85%	4.32%	10.31%	9.85%	NYSE Arca
CONSUMER STAPLES SPDR	USD	57.56	1.14%	1.50%	1.25%	1.18%	NYSE Arca
VANECK VECTORS JUNIOR GOLD M	USD	34.94	-1.77%	3.74%	9.26%	2.37%	NYSE Arca
SPDR BBG BARG HIGH YIELD BOND	USD	36.84	-0.08%	0.03%	0.27%	0.33%	NYSE Arca
VANGUARD REIT ETF	USD	79.31	0.70%	-0.26%	-7.39%	-4.42%	NYSE Arca

USA Treasury Bonds Yield Curve (%)



Source: Bloomberg

Capital Market Laboratory Coordinator: Economist Bruno Bellido Anicam
Support: Kaori Olulo, Jairo Trujillo, Mario Villar
e-mail: pulsohorsatil@ulima.edu.pe
facebook: www.facebook.com/pulsohorsatil.ul
Phone number : 4376767 Anexes: 35340 - 35310

PULSO BURSÁTIL

LIMA

Stocks

Ticker	Currency	Price	1D*	5D*	30D*	YTD*	Frequency	Volume (US\$)	Beta	Dividend Yield (%)	Price Earning	Market Cap. (M US\$)	Economic Sector*	Index Weight
▼ ALICORC1 PE**	S/.	11.61	-1.19%	3.66%	15.29%	9.53%	100.00%	4,704,796	0.95	1.21	24.35	3,085.29	Industrial	3.53%
▼ ATACOCB1 PE**	S/.	0.69	-1.43%	-5.48%	16.95%	1.47%	100.00%	94,516	2.35	0.00	-	211.15	Mining	1.02%
- BACKUS11 PE**	S/.	18.40	0.00%	0.55%	0.88%	-0.05%	55.56%	43,891	0.41	5.66	5.34	9,081.75	Industrial	0.82%
▲ BAP PE**	US\$	225.75	0.92%	3.04%	12.06%	8.53%	100.00%	4,182,173	1.06	3.80	-	17,939.63	Diverse	5.82%
▼ BVN PE**	US\$	14.68	-1.01%	3.38%	12.23%	3.97%	100.00%	1,124,258	1.16	0.57	-	4,040.49	Mining	5.88%
▼ CASAGRC1 PE**	S/.	5.90	-0.84%	-2.16%	5.36%	-4.68%	100.00%	30,356	0.74	6.84	15.76	154.79	Agricultural	1.31%
- CONTINC1 PE**	S/.	4.38	0.00%	0.46%	12.31%	5.54%	83.33%	3,757	0.80	3.38	16.10	6,661.29	Finance	2.85%
▲ CORARE11 PE**	S/.	0.73	1.39%	-1.35%	7.35%	1.39%	100.00%	50,305	1.57	5.12	9.75	295.03	Industrial	1.72%
▲ CPACASC1 PE**	S/.	8.40	0.60%	3.58%	8.39%	3.07%	100.00%	582,757	0.64	4.17	31.76	1,117.49	Industrial	2.38%
▼ CVERDEC1 PE**	US\$	30.70	-0.97%	-0.97%	13.70%	3.37%	100.00%	51,484	1.35	0.00	43.48	10,746.72	Mining	5.25%
▼ ENGEPEC1 PE**	S/.	1.85	-1.07%	-6.57%	8.82%	-6.57%	77.78%	41,826	0.91	3.45	17.73	1,666.97	Public Services	1.44%
▼ ENDISPC1**	S/.	5.46	-2.50%	-2.50%	5.00%	-3.19%	61.11%	840,052	0.96	3.49	11.79	1,085.88	Public Services	0.98%
▼ FERREYC1 PE**	S/.	2.59	-0.38%	0.39%	10.68%	1.57%	100.00%	171,785	1.18	4.96	9.28	818.21	Diverse	4.90%
▼ GRAMONC1 PE**	S/.	1.99	-0.50%	4.19%	5.29%	6.42%	94.44%	127,823	1.56	0.00	12.04	409.09	Diverse	4.05%
▼ IFS PE**	US\$	40.00	-0.47%	0.00%	14.58%	3.90%	88.89%	4,229,844	0.59	3.25	14.09	4,524.43	Diverse	7.22%
▼ INRETC1 PE**	US\$	20.40	-1.92%	-2.06%	5.54%	-2.86%	94.44%	2,336,100	1.00	0.95	24.53	2,097.27	Diverse	5.28%
▲ LUSURC1 PE**	S/.	12.00	0.42%	0.00%	4.35%	-0.41%	83.33%	46,381	0.52	5.17	14.06	1,819.93	Public Services	1.81%
▼ MILPOC1 PE**	S/.	5.13	-0.39%	2.60%	20.42%	11.52%	100.00%	62,127	1.16	16.71	11.62	2,116.27	Mining	1.56%
▼ MINSUR11 PE**	S/.	1.91	-4.50%	-3.54%	15.06%	6.11%	100.00%	1,036,883	1.71	3.61	13.39	1,715.00	Mining	3.09%
▼ PML PE**	US\$	0.32	-3.02%	-0.31%	14.64%	0.31%	94.44%	38,684	1.41	0.00	-	83.47	Mining	2.12%
▼ RELAPAC1 PE**	S/.	0.35	-1.14%	-3.85%	25.45%	12.90%	100.00%	81,201	1.48	0.00	5.40	385.33	Industrial	2.12%
▲ SCCO PE**	US\$	50.00	1.01%	0.91%	12.18%	5.13%	83.33%	167,939	1.18	1.18	32.47	38,651.42	Mining	2.14%
▼ SIDERC1 PE**	S/.	0.47	-0.63%	-2.28%	2.61%	-1.67%	83.33%	11,319	1.74	0.00	4.30	180.51	Industrial	1.43%
▼ TV PE**	US\$	1.25	-1.57%	1.63%	11.61%	4.17%	94.44%	166,398	1.48	0.00	-	1,032.16	Mining	2.93%
- UNACEMC1 PE**	S/.	3.00	0.00%	2.39%	2.39%	0.00%	88.89%	1,294,282	0.73	1.73	32.20	1,538.40	Industrial	3.00%
▼ VOLCABC1 PE**	S/.	1.38	-1.43%	-2.13%	12.20%	4.55%	100.00%	3,445,334	1.81	1.88	17.92	3,186.71	Mining	5.90%

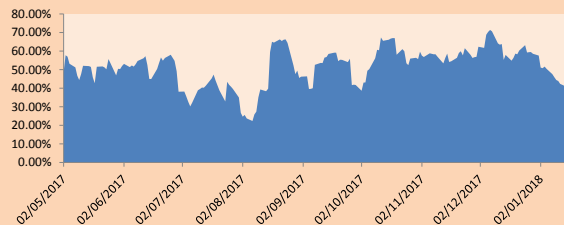
Quantity of shares: 26
 Source: Bloomberg, Económica
 * Bloomberg Industry Classification System
 ** PER is used in the stock market and original currency of the instrument
 *Legend: Variation 1D: 1 Day; 5D: 5 Days; 1M: 1 Month; YTD: Var.% 12/31/17 to date

Sectorial Indices

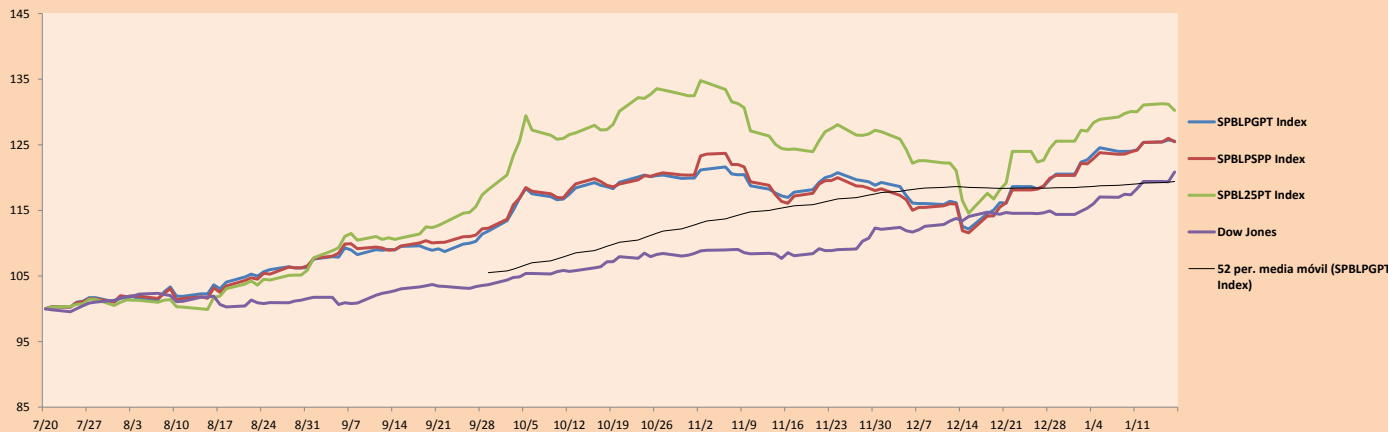
	Close	1D*	5D*	30D*	YTD*	Beta
▼ Mining Index	369.85	-0.33%	0.94%	10.64%	4.04%	1.13
▼ Consumer Index	942.22	-1.14%	1.65%	9.68%	4.50%	0.65
▼ Industrial Index	241.84	-0.01%	1.87%	7.75%	2.49%	1.08
▲ Banking and Financial Index	1,144.38	0.80%	2.33%	9.56%	7.04%	1.09
▲ Construction Index	271.84	0.24%	2.92%	5.61%	2.53%	0.96
▼ Services Index	400.75	-0.26%	-2.29%	6.84%	-3.80%	0.52
▼ Juniors Index	43.39	-2.69%	-2.01%	10.77%	-1.00%	1.47
▼ Electric Index	391.23	-0.27%	-2.29%	6.84%	-3.80%	0.52

*Legend: Variation 1D: 1 Day; 5D: 5 Days; 1M: 1 Month; YTD: Var.% 12/31/17 to date

Correlation Graph of Returns of Mining Index against Metallic Index of London (3 months)



Indices (6 months)



Source: Bloomberg

Capital Market Laboratory Coordinador: Economist Bruno Bellido Anicama
 Support: Kaori Olulo, Jairo Trujillo, Mario Villar
 e-mail: pulsobursatil@ulima.edu.pe
 facebook: www.facebook.com/pulsobursatil.ul
 Phone number : 4376767 Anexes: 35340 - 35310

PULSO BURSÁTIL

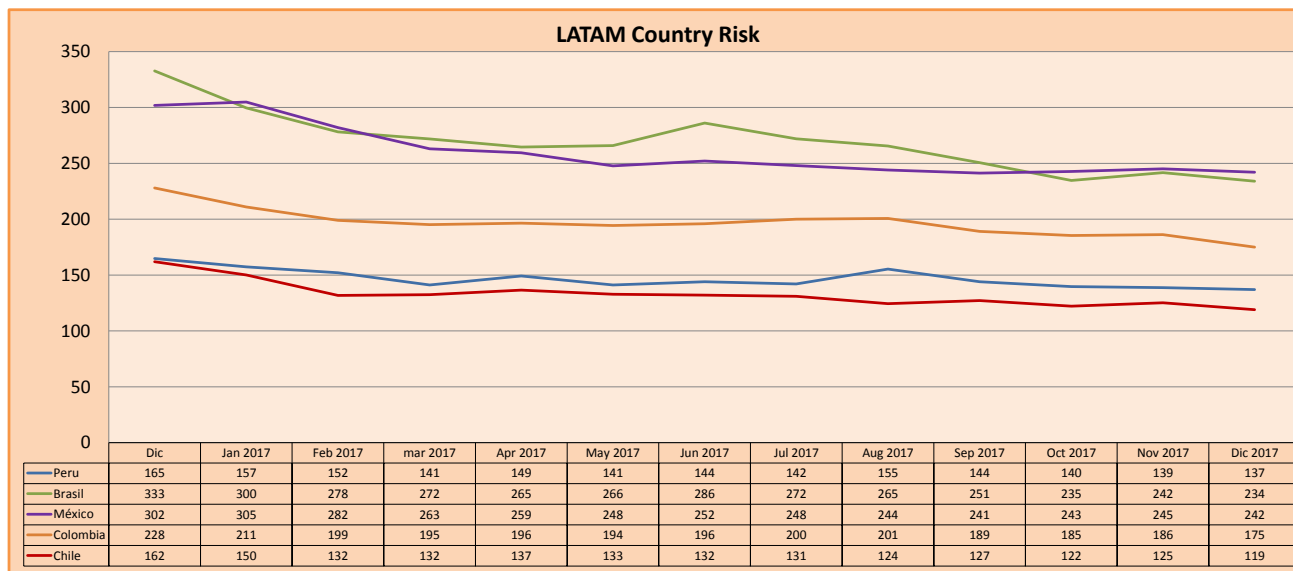
SOVEREIGN RATING

RISK RATINGS			
Moody's	S&P	Fitch	
Aaa	AAA	AAA	Prime
Aa1	AA+	AA+	High credit quality
Aa2	AA	AA	
Aa3	AA-	AA-	
A1	A+	A+	Medium-high grade, with low credit risk
A2	A	A	
A3	A-	A-	
Baa1	BBB+	BBB+	Moderate Credit Risk
Baa2	BBB	BBB	
Baa3	BBB-	BBB-	
Ba1	BB+	BB+	It has speculative elements and it is subject to substantial credit risk
Ba2	BB	BB	
Ba3	BB-	BB-	
B1	B+	B+	It is considered speculative and it has high credit risk
B2	B	B	
B3	B-	B-	
Caa1	CCC+		Bad credit conditions and it is subject to high credit risk
Caa2	CCC		
Caa3	CCC-	CCC	
Ca	CC		Very close to default or in default
	C		
C	D	DDD DD D	

Source: Bloomberg

Latin America Credit Rating			
Clasificadora de riesgo			
Country	Moody's	Fitch	S&P
Peru	A3	BBB+	BBB+
Mexico	A3	BBB+	BBB+
Venezuela	Caa3	RD	SD
Brazil	Ba2	BB	BB-
Colombia	Baa2	BBB	BBB-
Chile	Aa3	A	A+
Argentine	B2	B	B+
Panama	Baa2	BBB	BBB

Source: Bloomberg



Source: Bloomberg

Capital Market Laboratory Coordinator: Economist Bruno Bellido Anicama
Support: Kaori Olulua, Jairo Trujillo, Mario Villar
e-mail: pulsobursatil@ulima.edu.pe
facebook: www.facebook.com/pulsobursatil.ul
Phone number : 4376767 Anexxes: 35340 - 35310